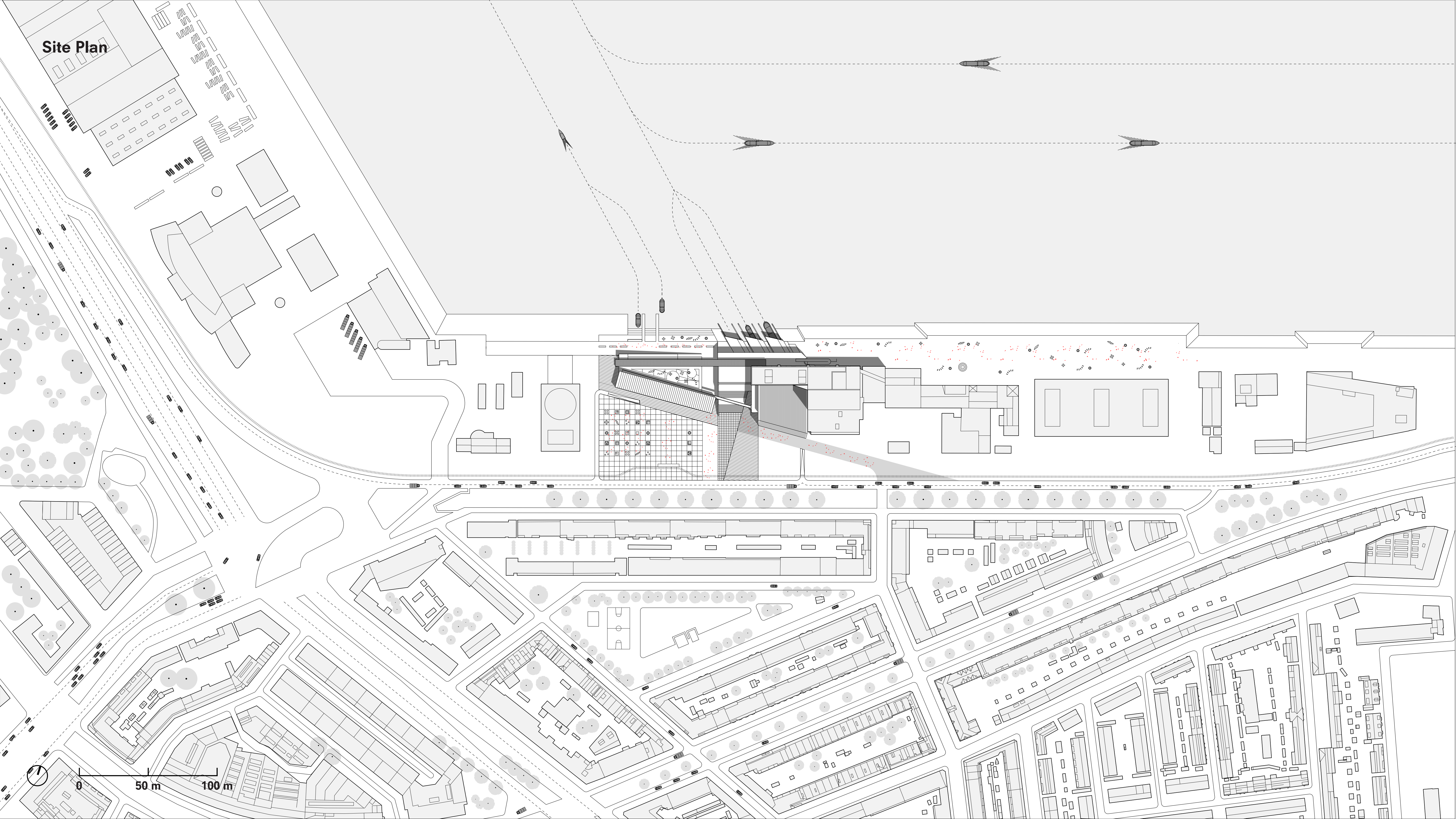


Drawing Set

Group Site Plan

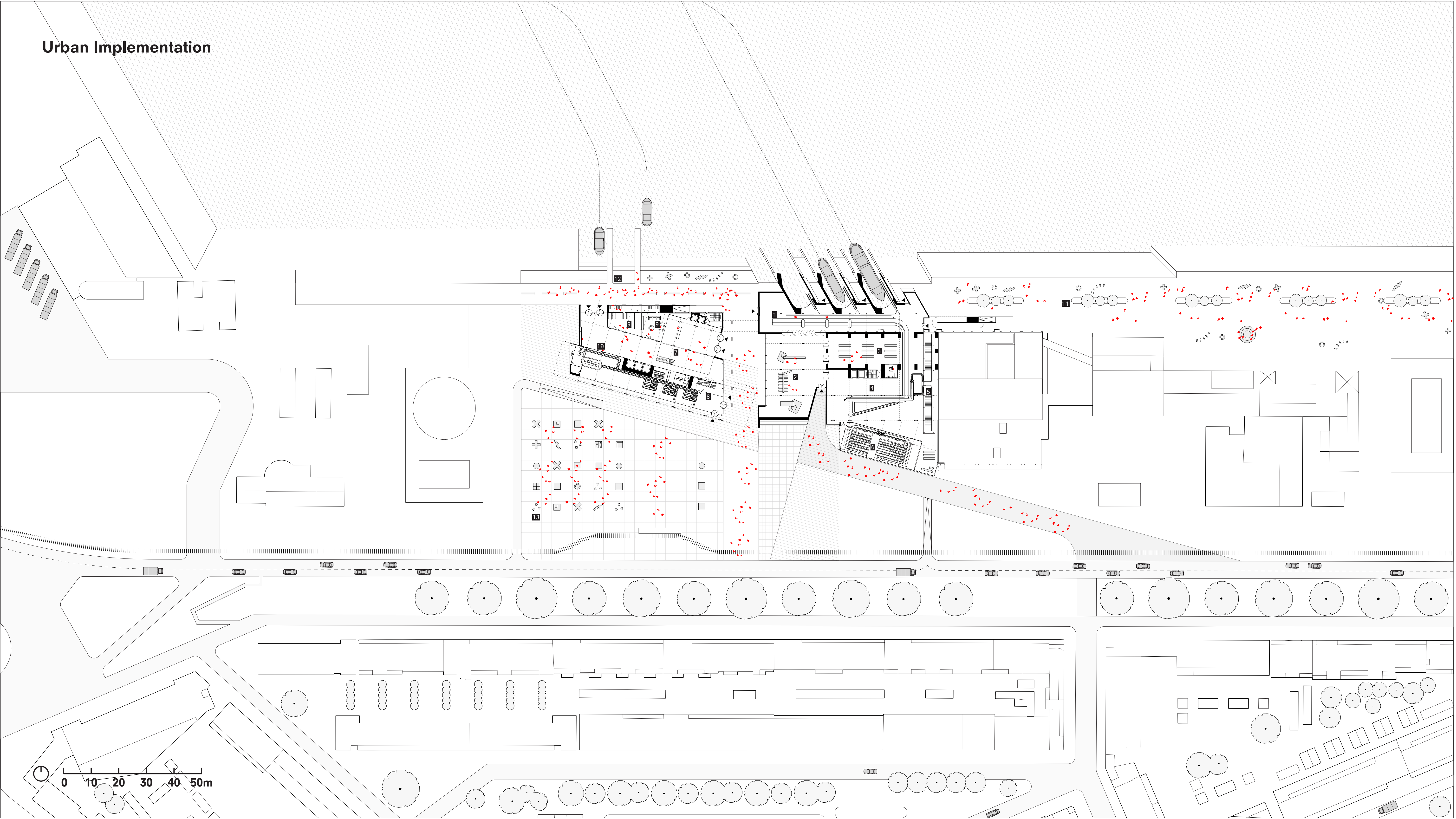




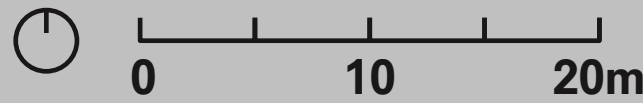
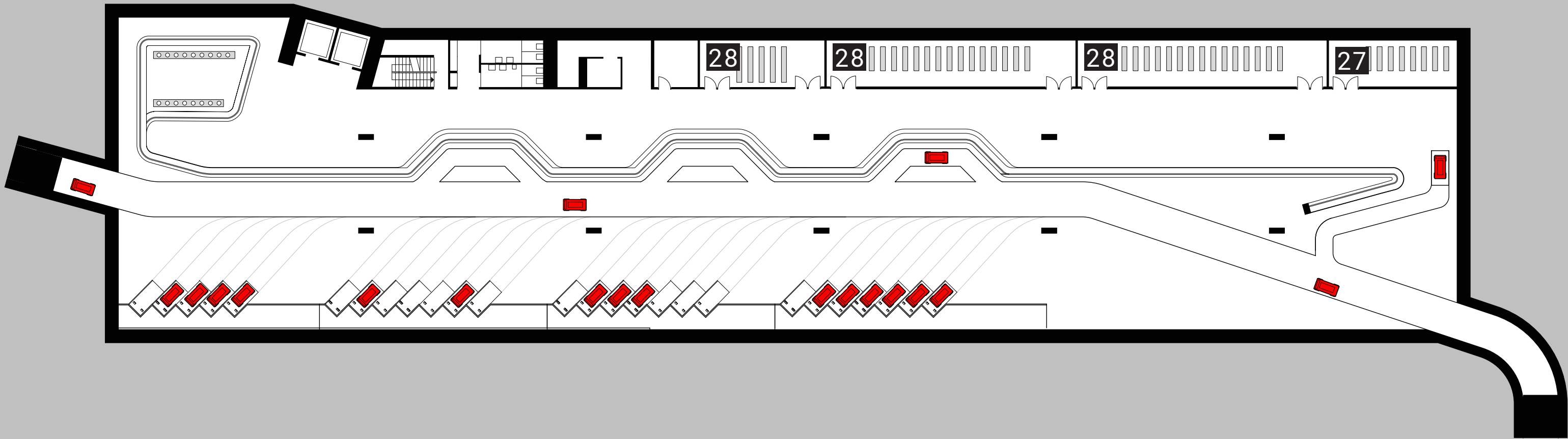
Site Plan

0 50 m 100 m

Urban Implementation

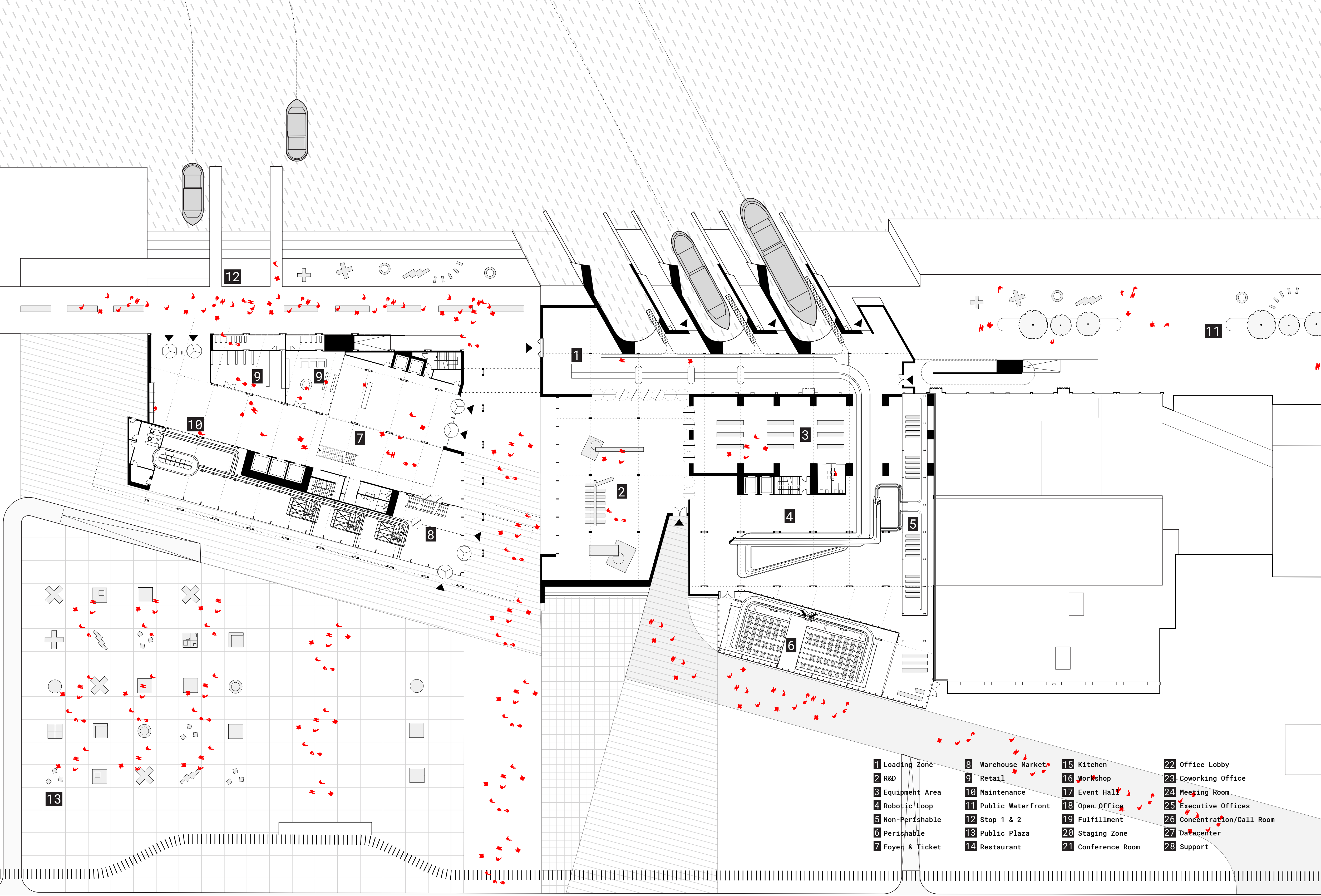
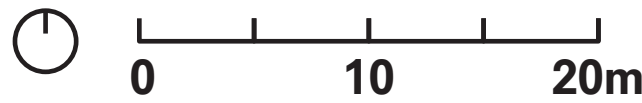
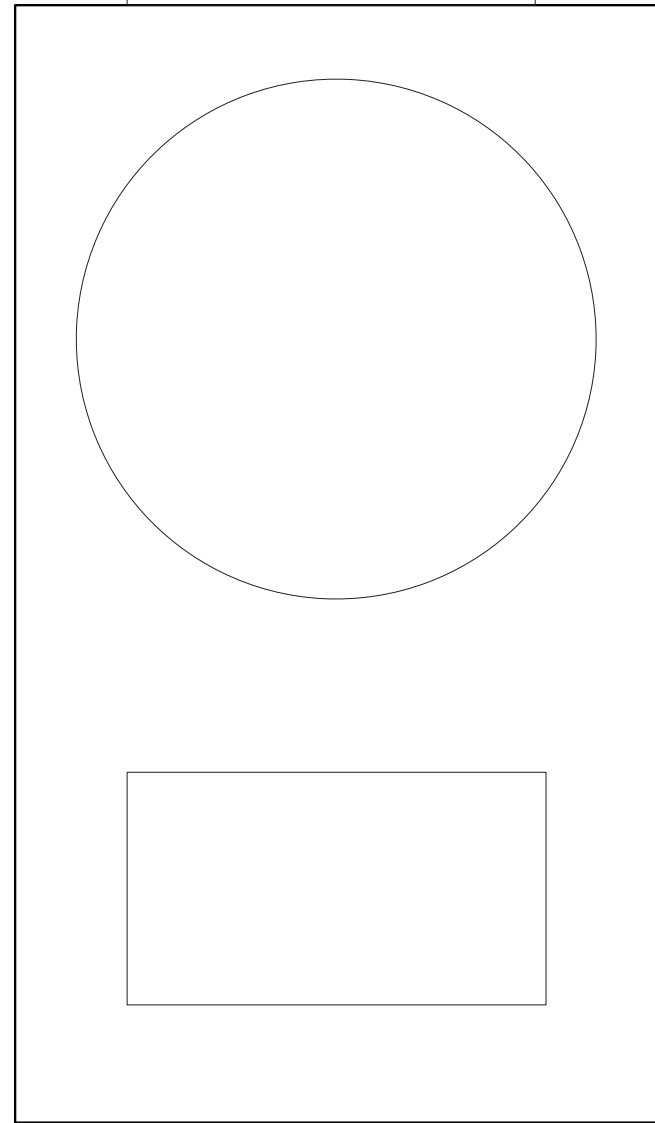


Basement Plan
-2.4 m



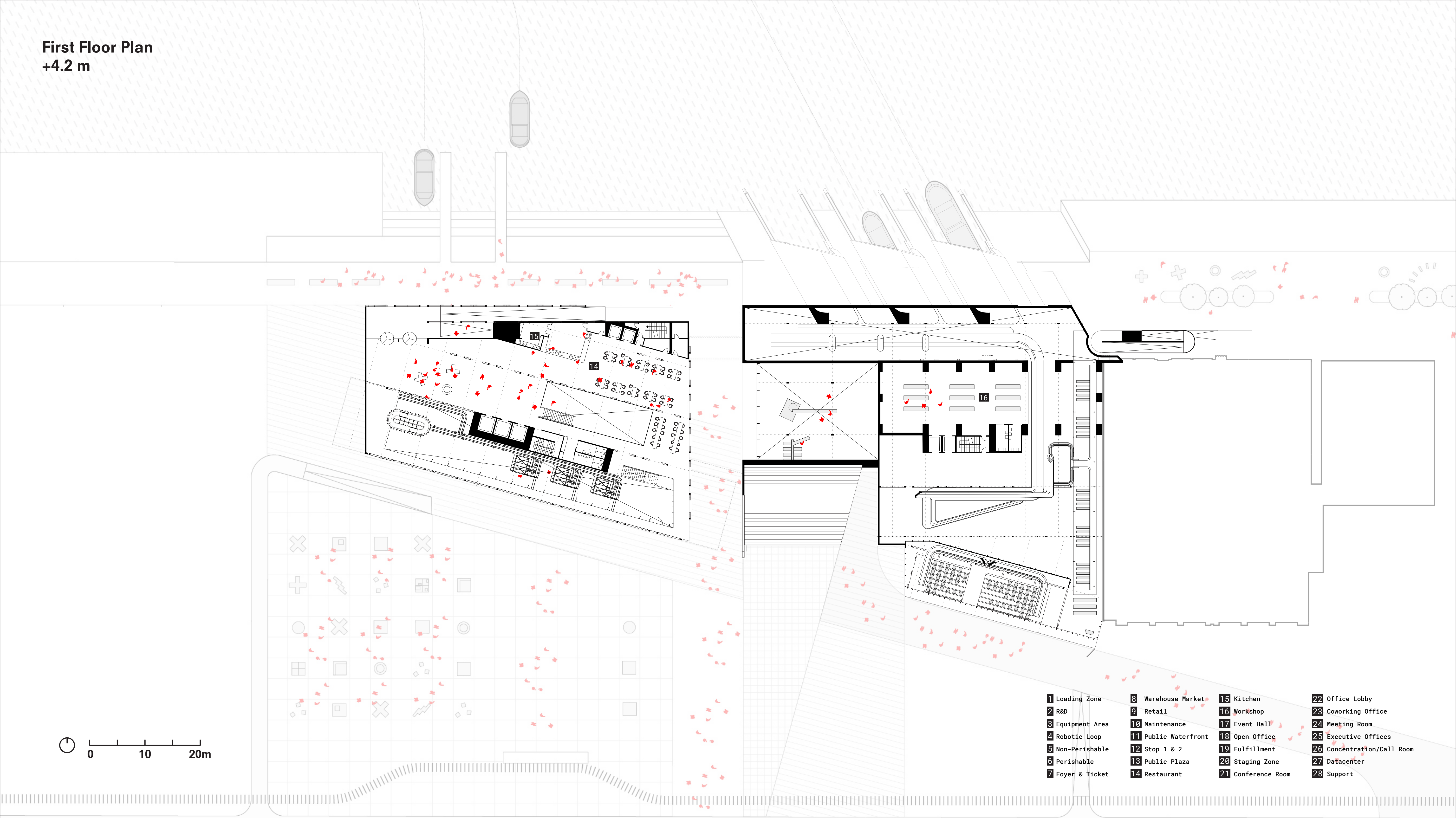
27 Datacenter
28 Support

Ground Floor Plan
+1.2 m



- | | | | |
|------------------|----------------------|--------------------|----------------------------|
| 1 Loading Zone | 8 Warehouse Market | 15 Kitchen | 22 Office Lobby |
| 2 R&D | 9 Retail | 16 Workshop | 23 Coworking Office |
| 3 Equipment Area | 10 Maintenance | 17 Event Hall | 24 Meeting Room |
| 4 Robotic Loop | 11 Public Waterfront | 18 Open Office | 25 Executive Offices |
| 5 Non-Perishable | 12 Stop 1 & 2 | 19 Fulfillment | 26 Concentration/Call Room |
| 6 Perishable | 13 Public Plaza | 20 Staging Zone | 27 Datacenter |
| 7 Foyer & Ticket | 14 Restaurant | 21 Conference Room | 28 Support |

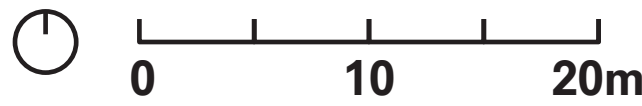
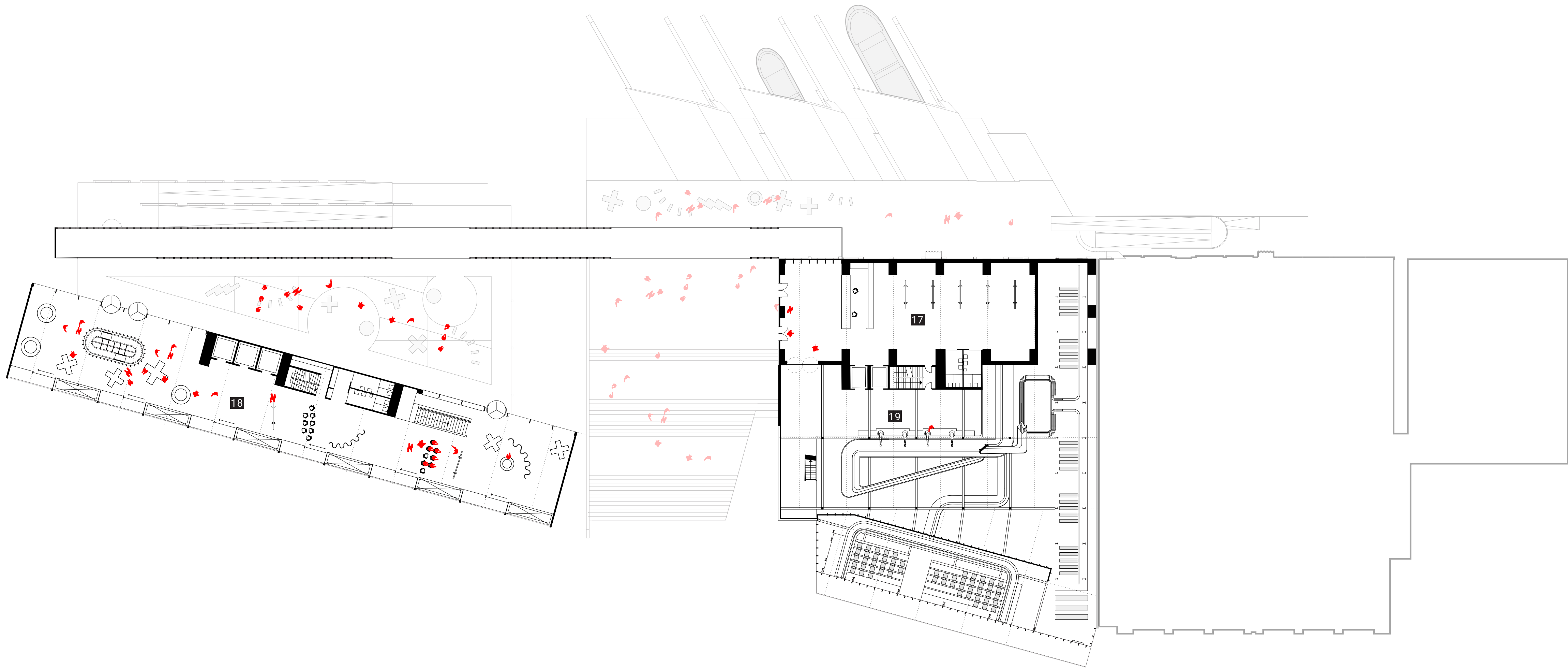
First Floor Plan
+4.2 m



0 10 20m

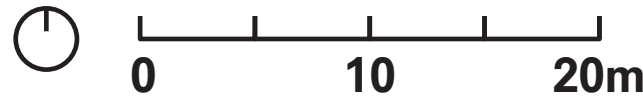
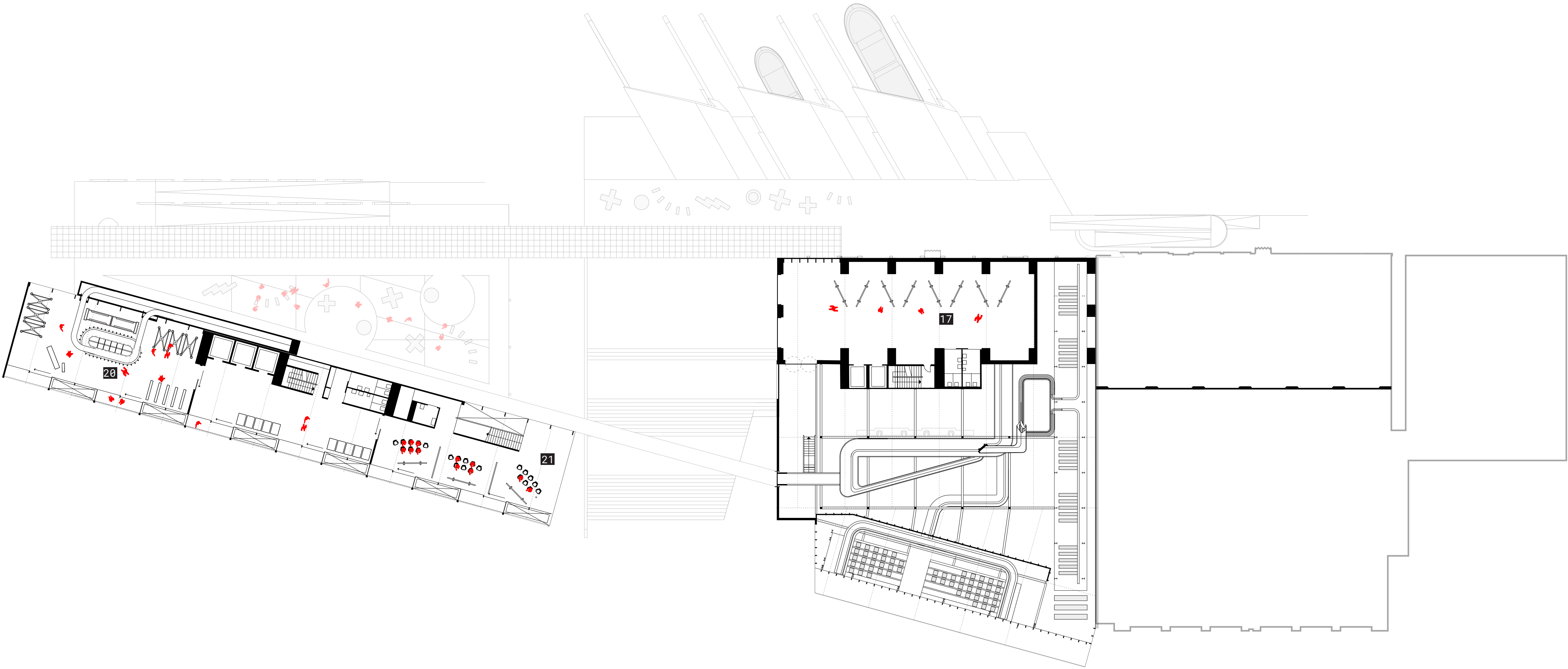
- | | | | |
|------------------|----------------------|--------------------|----------------------------|
| 1 Loading Zone | 8 Warehouse Market | 15 Kitchen | 22 Office Lobby |
| 2 R&D | 9 Retail | 16 Workshop | 23 Coworking Office |
| 3 Equipment Area | 10 Maintenance | 17 Event Hall | 24 Meeting Room |
| 4 Robotic Loop | 11 Public Waterfront | 18 Open Office | 25 Executive Offices |
| 5 Non-Perishable | 12 Stop 1 & 2 | 19 Fulfillment | 26 Concentration/Call Room |
| 6 Perishable | 13 Public Plaza | 20 Staging Zone | 27 Datacenter |
| 7 Foyer & Ticket | 14 Restaurant | 21 Conference Room | 28 Support |

Second Floor Plan
+7.2 m



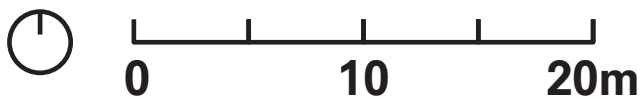
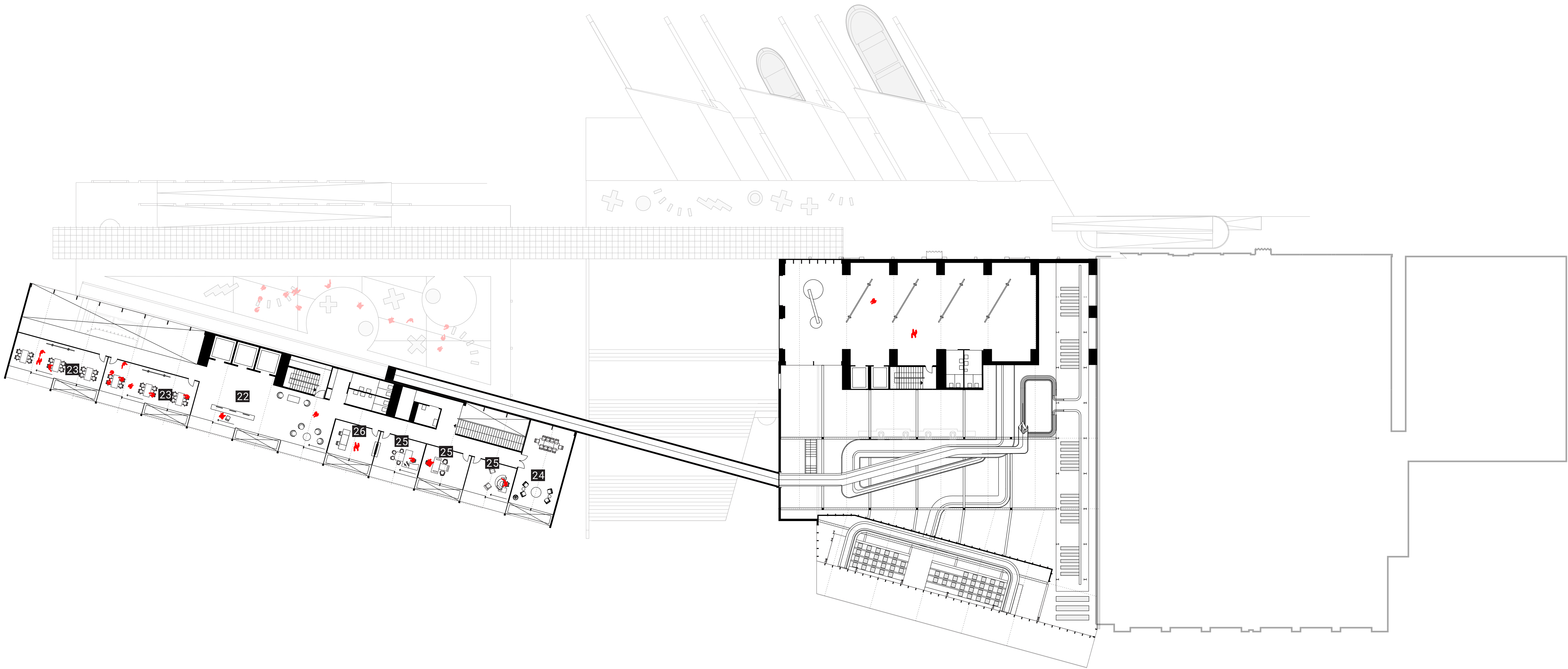
- | | | | |
|------------------|----------------------|--------------------|----------------------------|
| 1 Loading Zone | 8 Warehouse Market | 15 Kitchen | 22 Office Lobby |
| 2 R&D | 9 Retail | 16 Workshop | 23 Coworking Office |
| 3 Equipment Area | 10 Maintenance | 17 Event Hall | 24 Meeting Room |
| 4 Robotic Loop | 11 Public Waterfront | 18 Open Office | 25 Executive Offices |
| 5 Non-Perishable | 12 Stop 1 & 2 | 19 Fulfillment | 26 Concentration/Call Room |
| 6 Perishable | 13 Public Plaza | 20 Staging Zone | 27 Datacenter |
| 7 Foyer & Ticket | 14 Restaurant | 21 Conference Room | 28 Support |

Third Floor Plan
+10.4 m



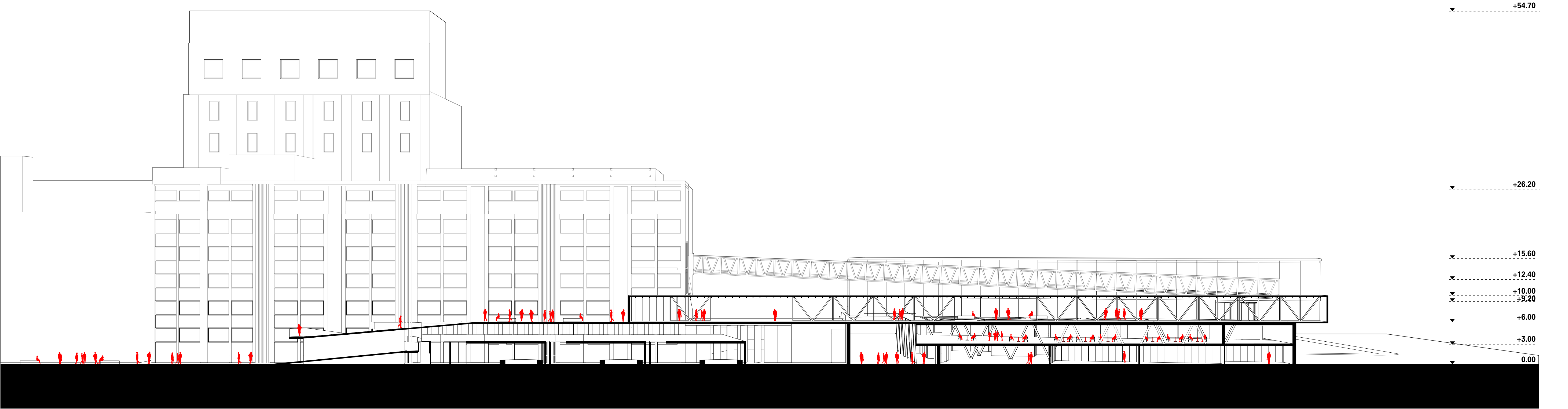
- | | | | |
|------------------|----------------------|--------------------|----------------------------|
| 1 Loading Zone | 8 Warehouse Market | 15 Kitchen | 22 Office Lobby |
| 2 R&D | 9 Retail | 16 Workshop | 23 Coworking Office |
| 3 Equipment Area | 10 Maintenance | 17 Event Hall | 24 Meeting Room |
| 4 Robotic Loop | 11 Public Waterfront | 18 Open Office | 25 Executive Offices |
| 5 Non-Perishable | 12 Stop 1 & 2 | 19 Fulfillment | 26 Concentration/Call Room |
| 6 Perishable | 13 Public Plaza | 20 Staging Zone | 27 Datacenter |
| 7 Foyer & Ticket | 14 Restaurant | 21 Conference Room | 28 Support |

Fourth Floor Plan
+13.6 m

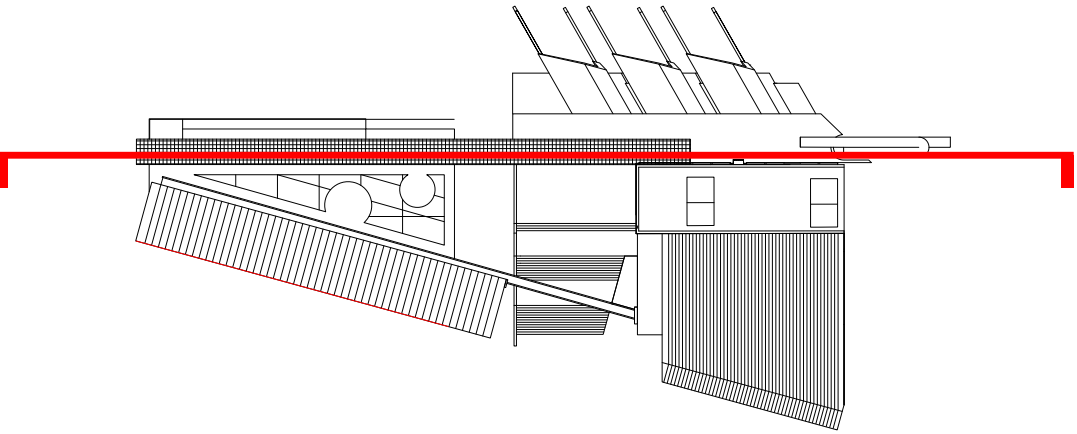


- | | | | |
|------------------|----------------------|--------------------|----------------------------|
| 1 Loading Zone | 8 Warehouse Market | 15 Kitchen | 22 Office Lobby |
| 2 R&D | 9 Retail | 16 Workshop | 23 Coworking Office |
| 3 Equipment Area | 10 Maintenance | 17 Event Hall | 24 Meeting Room |
| 4 Robotic Loop | 11 Public Waterfront | 18 Open Office | 25 Executive Offices |
| 5 Non-Perishable | 12 Stop 1 & 2 | 19 Fulfillment | 26 Concentration/Call Room |
| 6 Perishable | 13 Public Plaza | 20 Staging Zone | 27 Datacenter |
| 7 Foyer & Ticket | 14 Restaurant | 21 Conference Room | 28 Support |

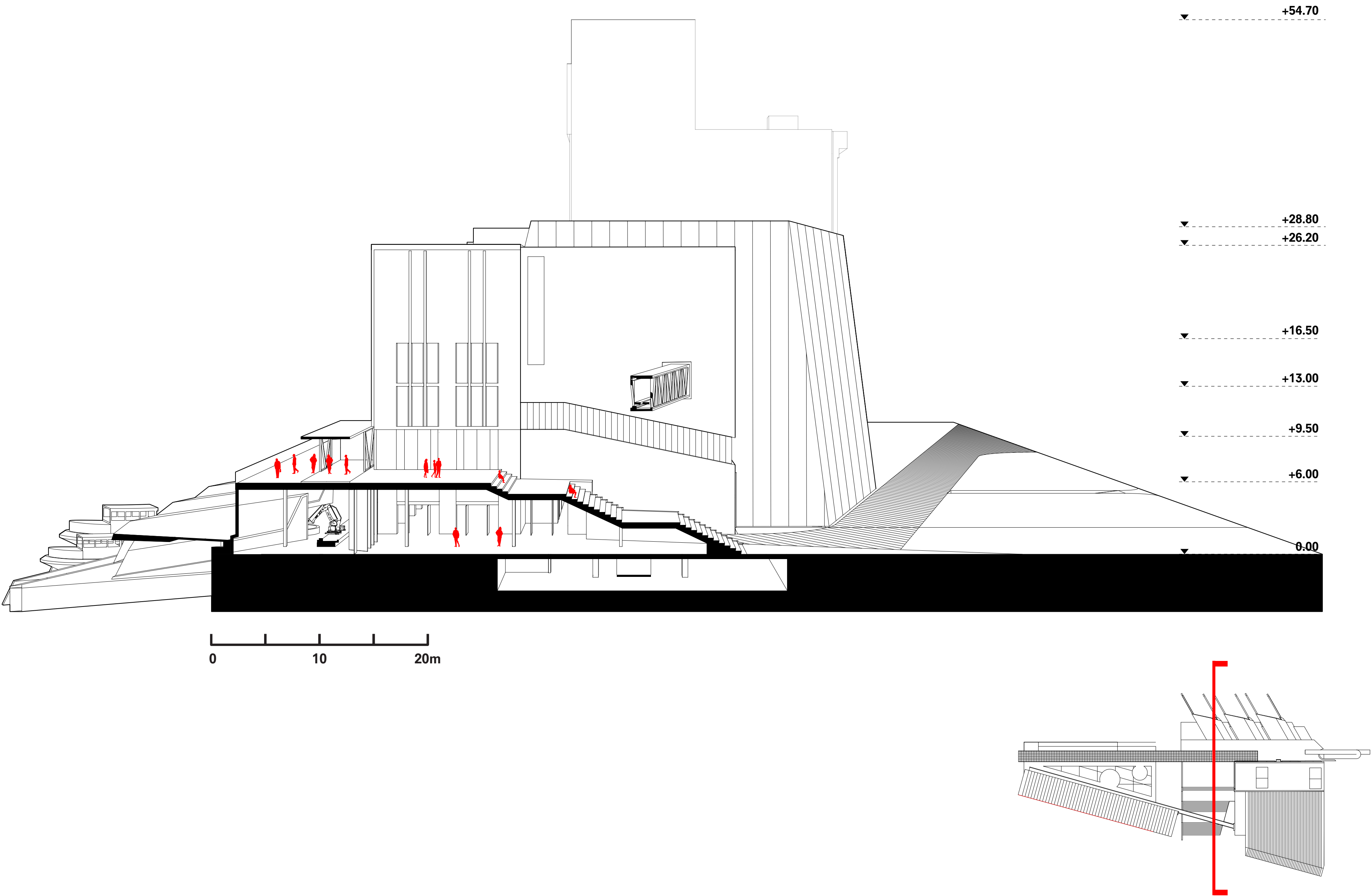
Section North



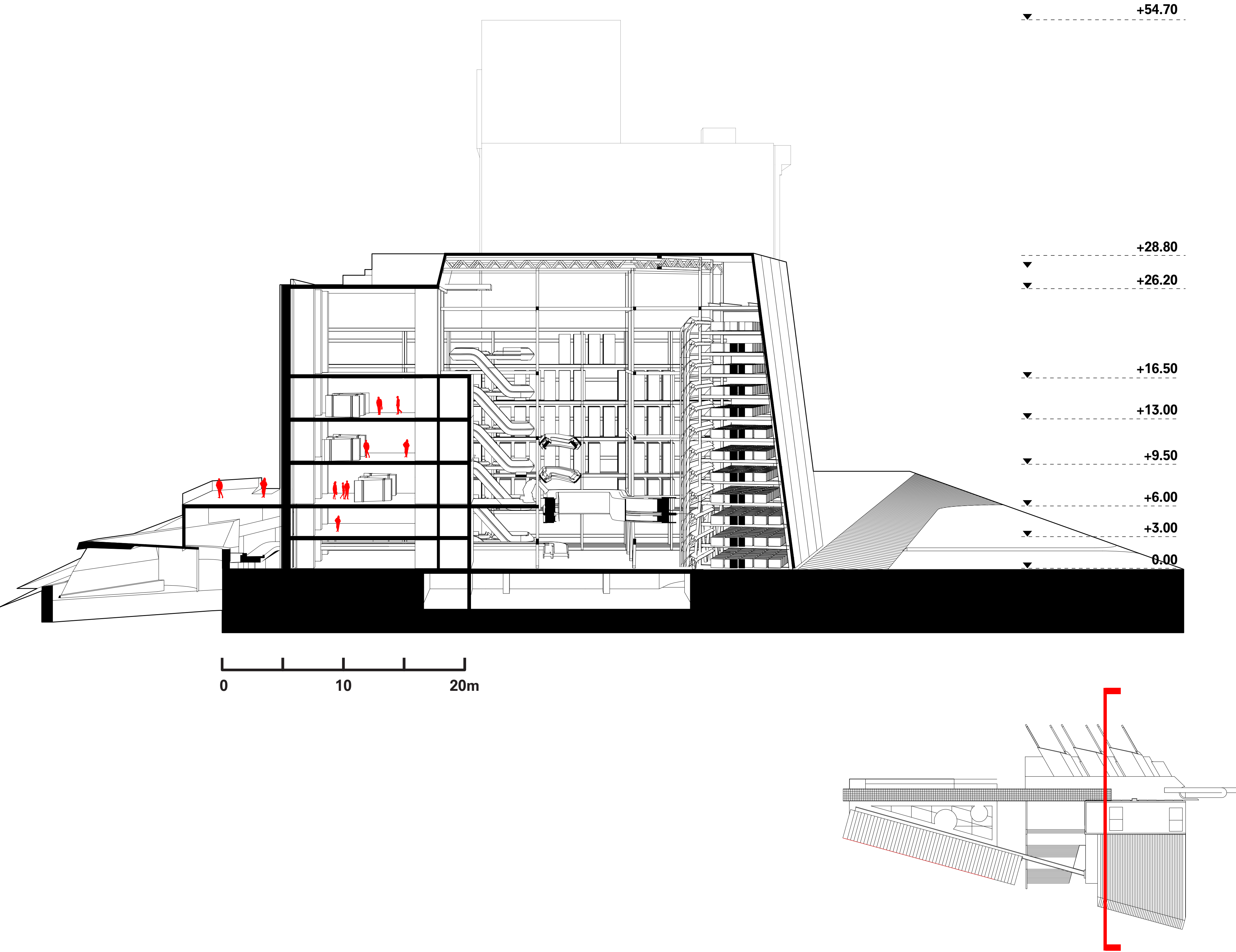
0 10 20m



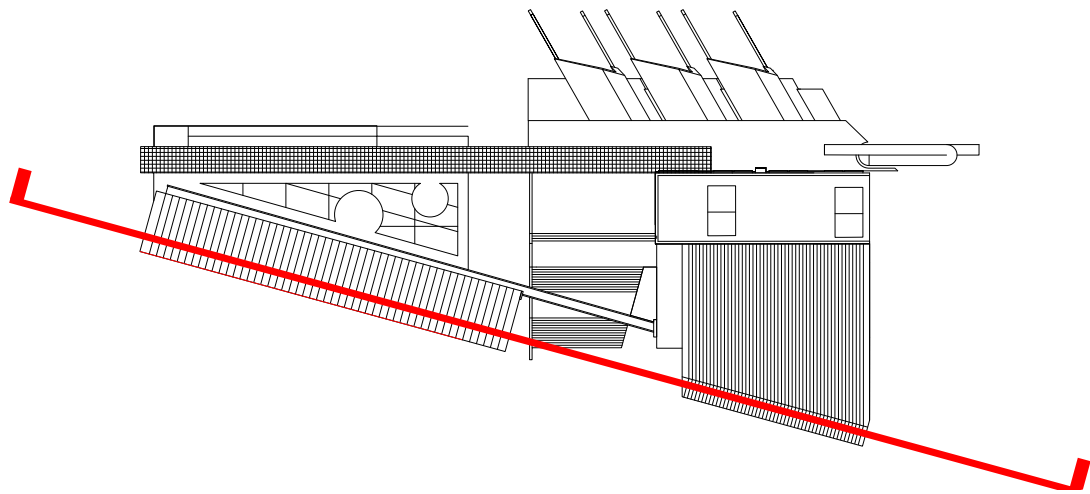
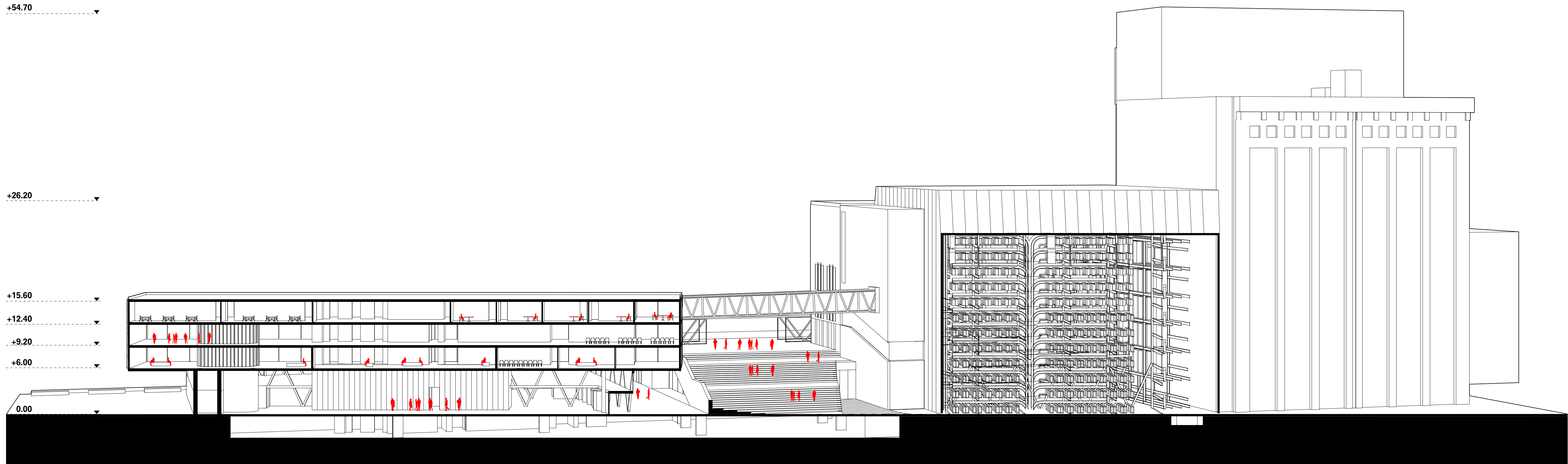
Section West I



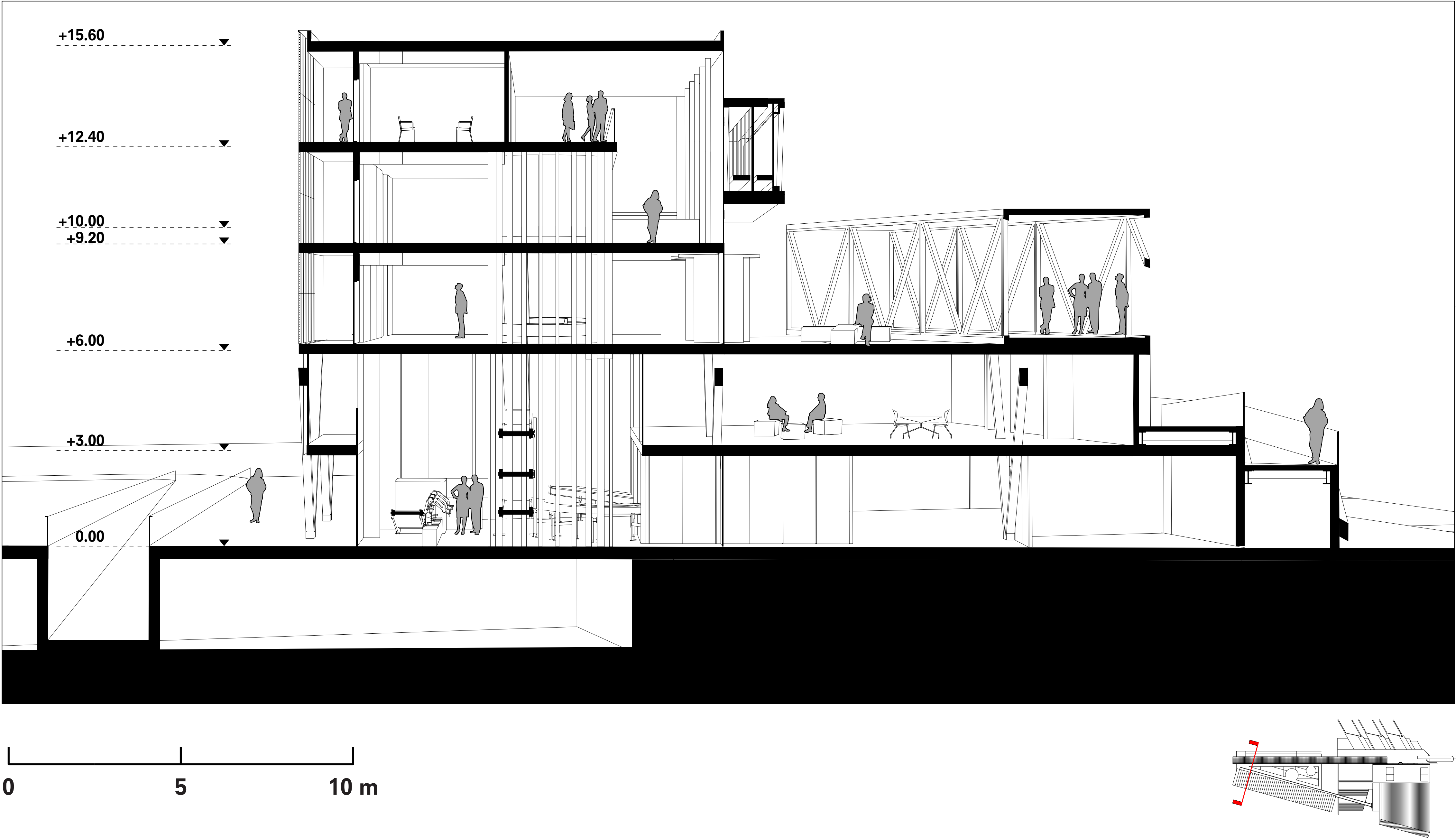
Section West II



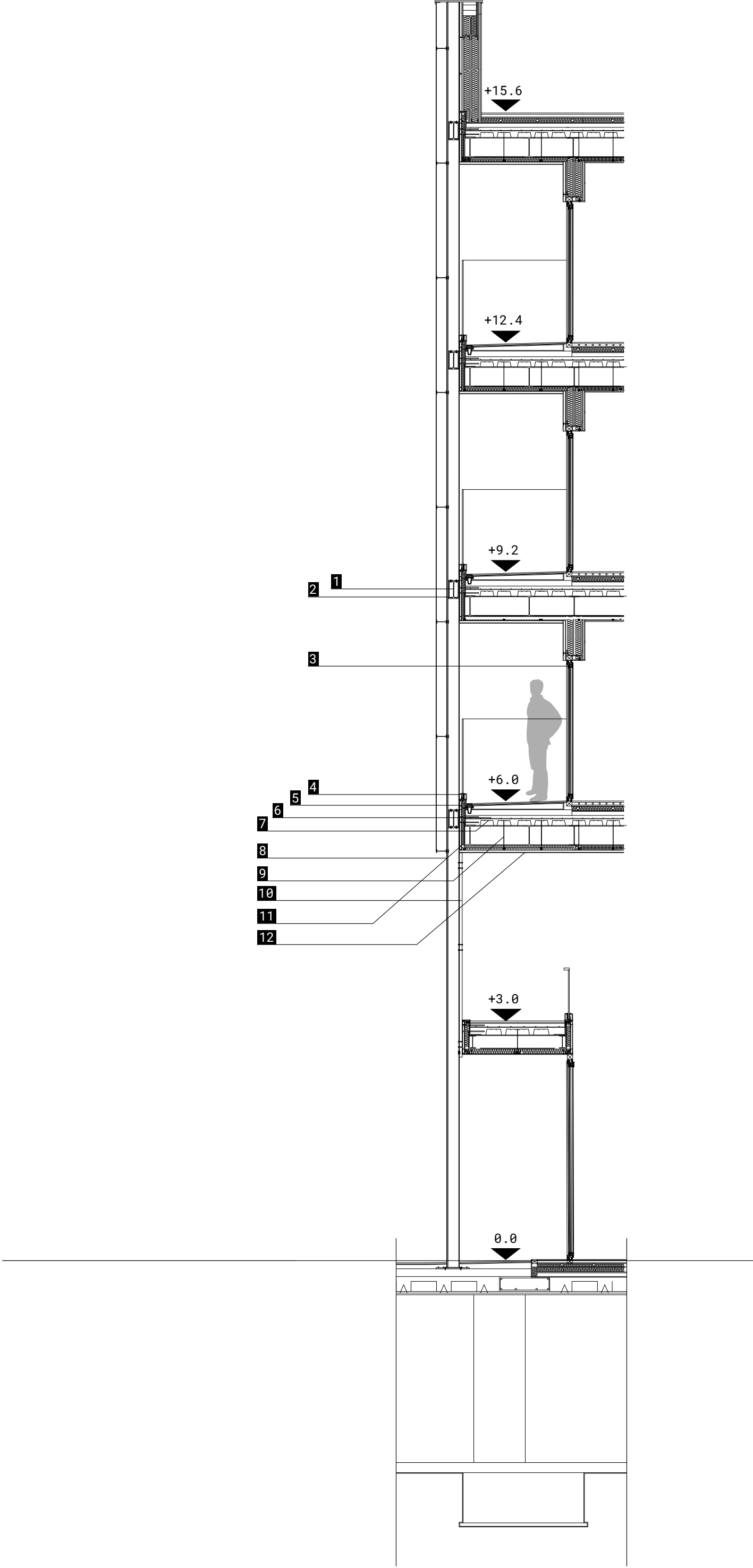
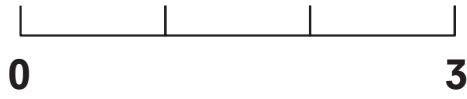
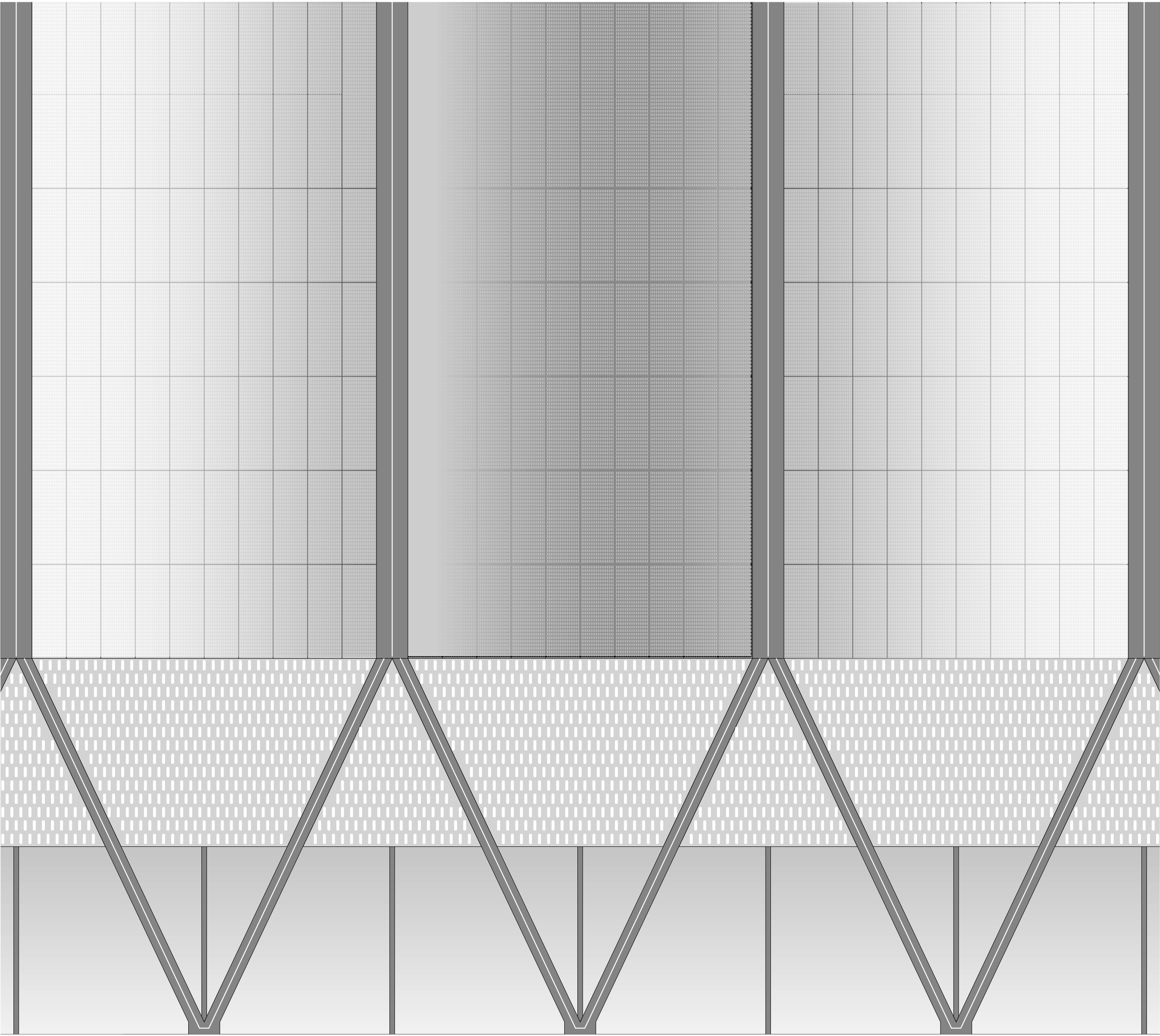
Section South



Section East

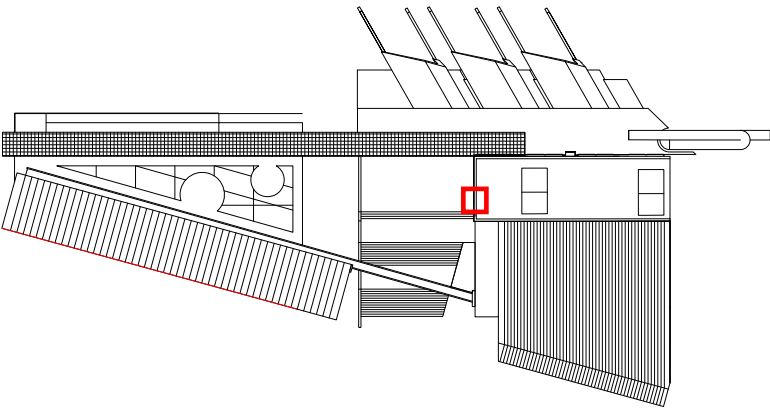
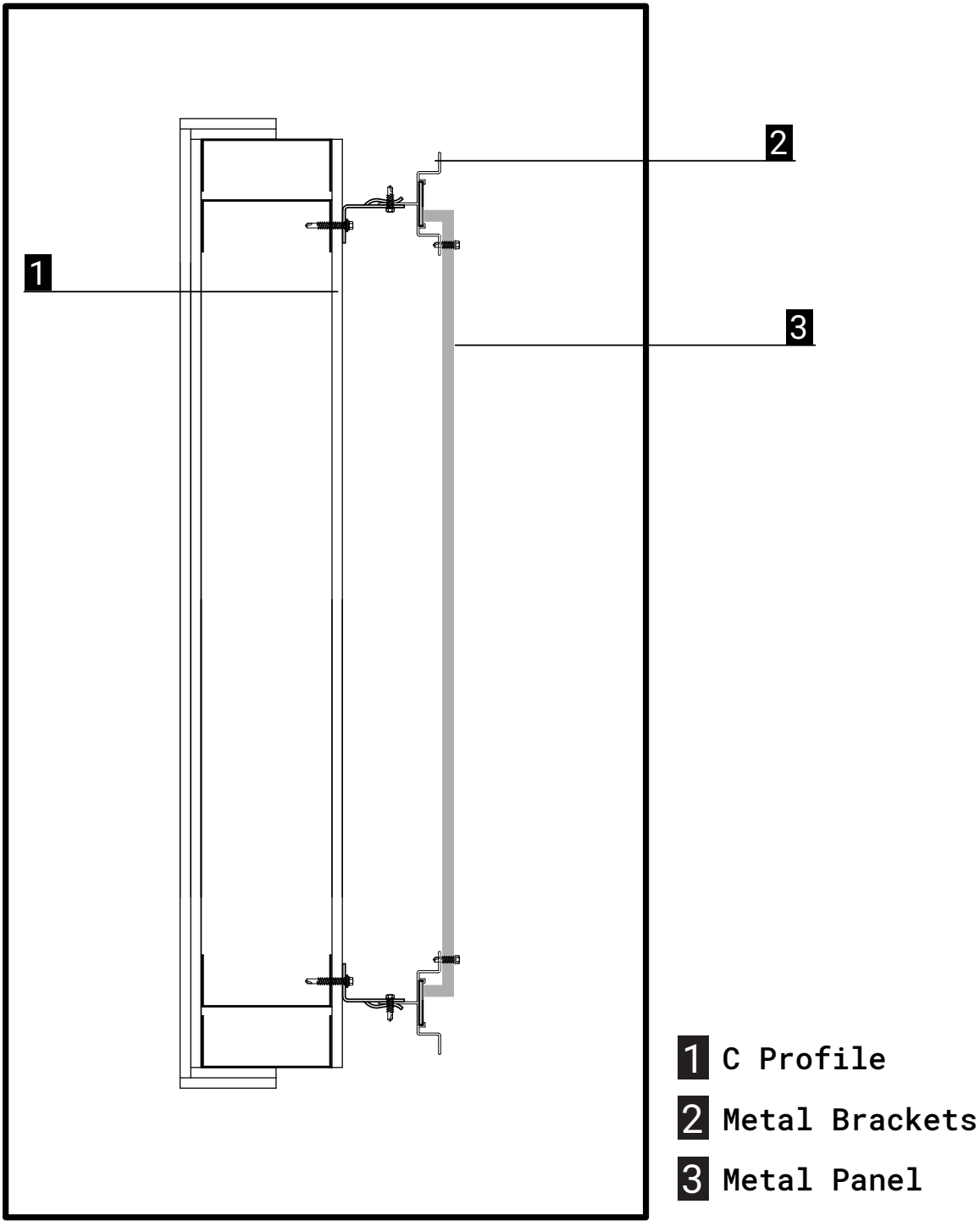


System Detail

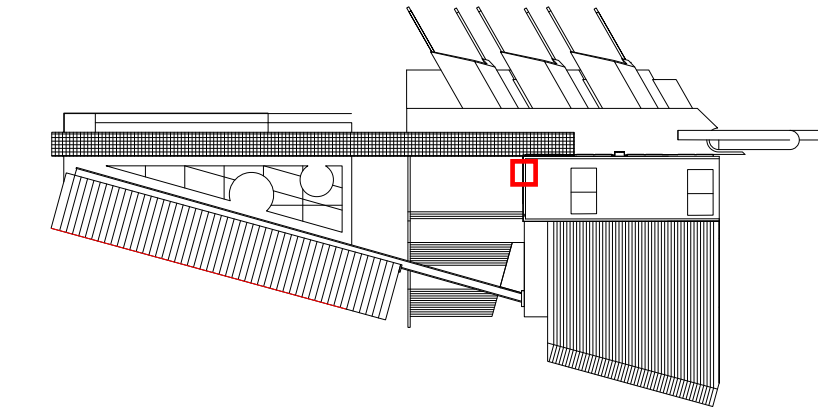
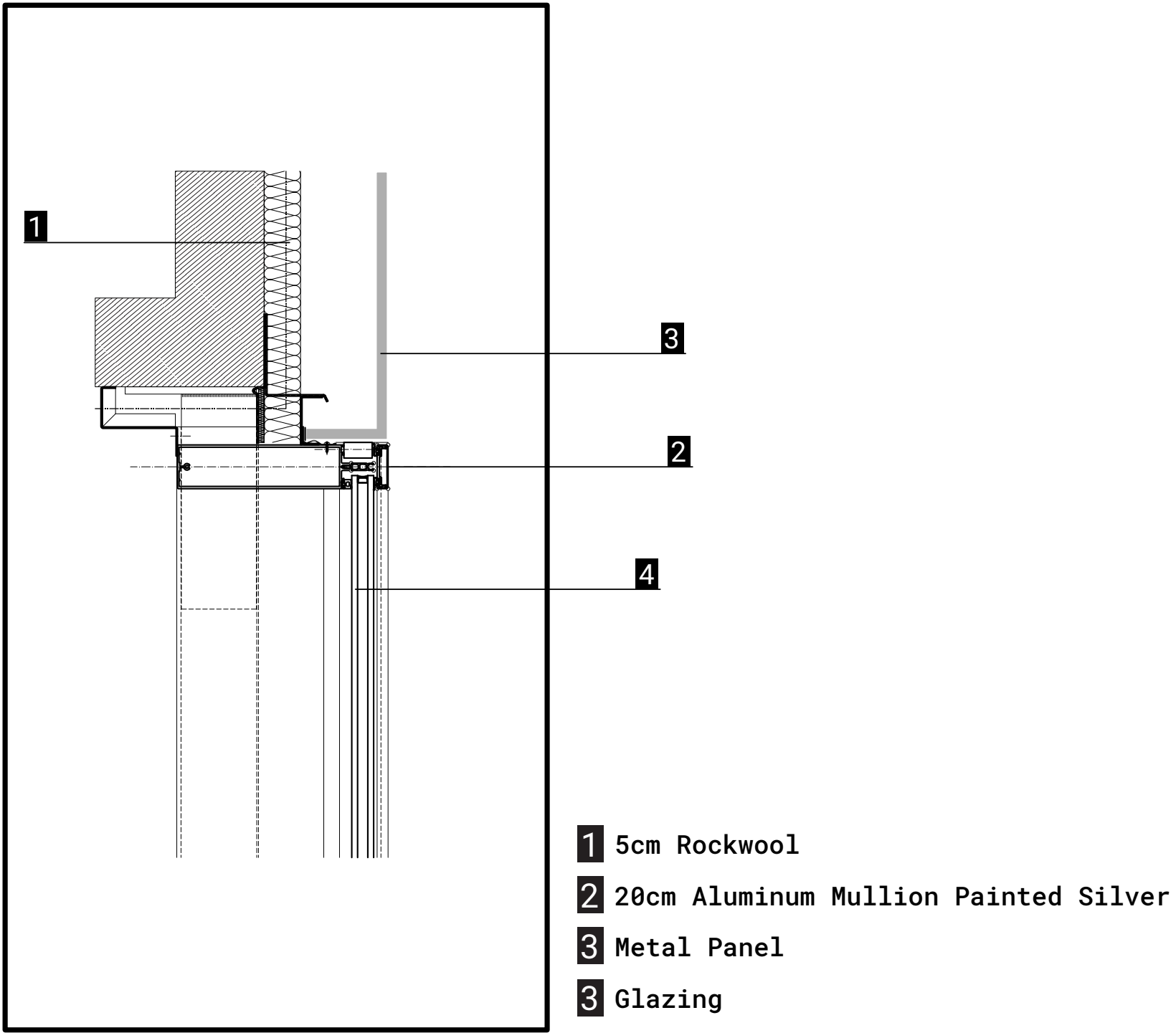


- 1 I Beam [HEA 240]
- 2 Steel Profile
- 3 Aluminum Mullion
- 4 Glass Railing
- 5 Insulation Rock Wool
- 6 Concrete Slab
- 7 Metal Decking
- 8 I Beam [IPE 180]
- 9 Ceiling Hanging
- 10 Perforated Steel Plate
- 11 U Profile
- 12 Ceiling Board Dekton

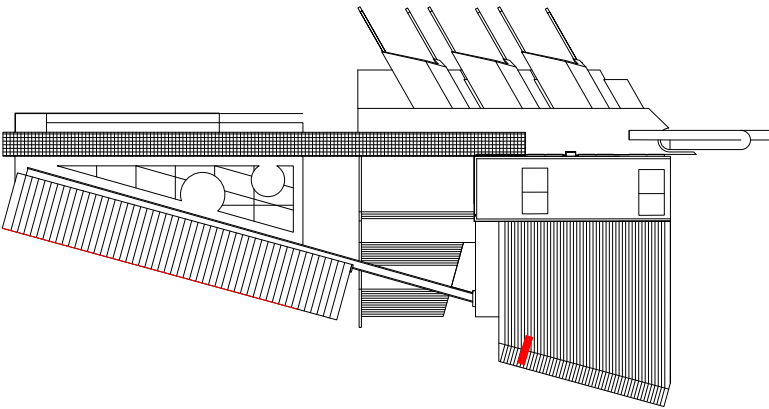
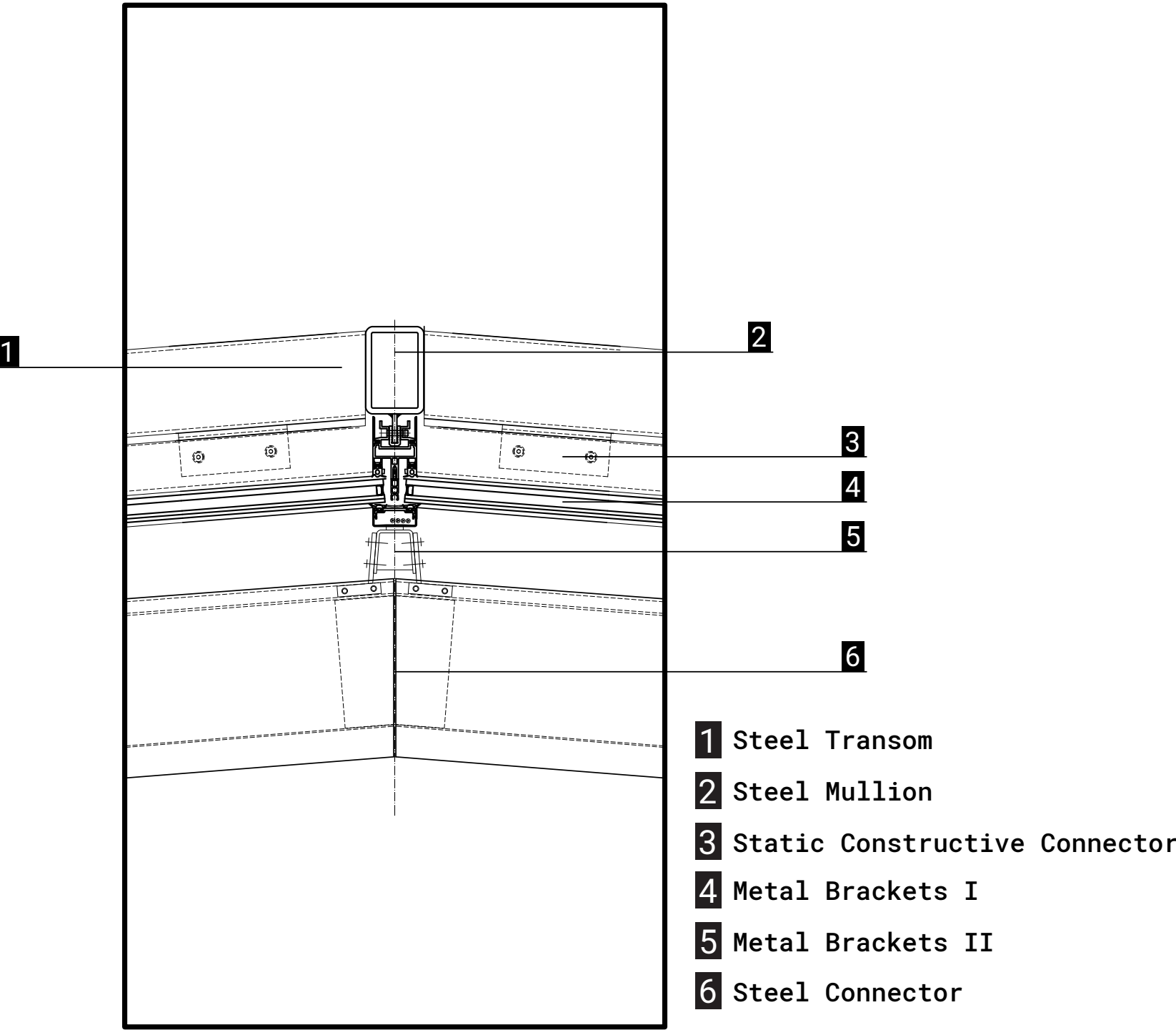
Detail I



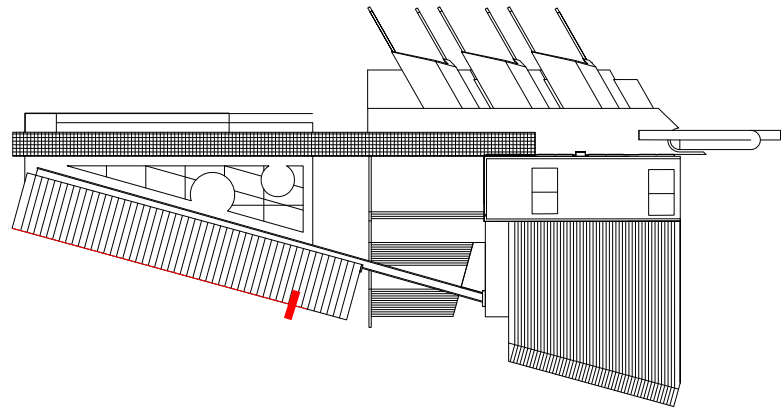
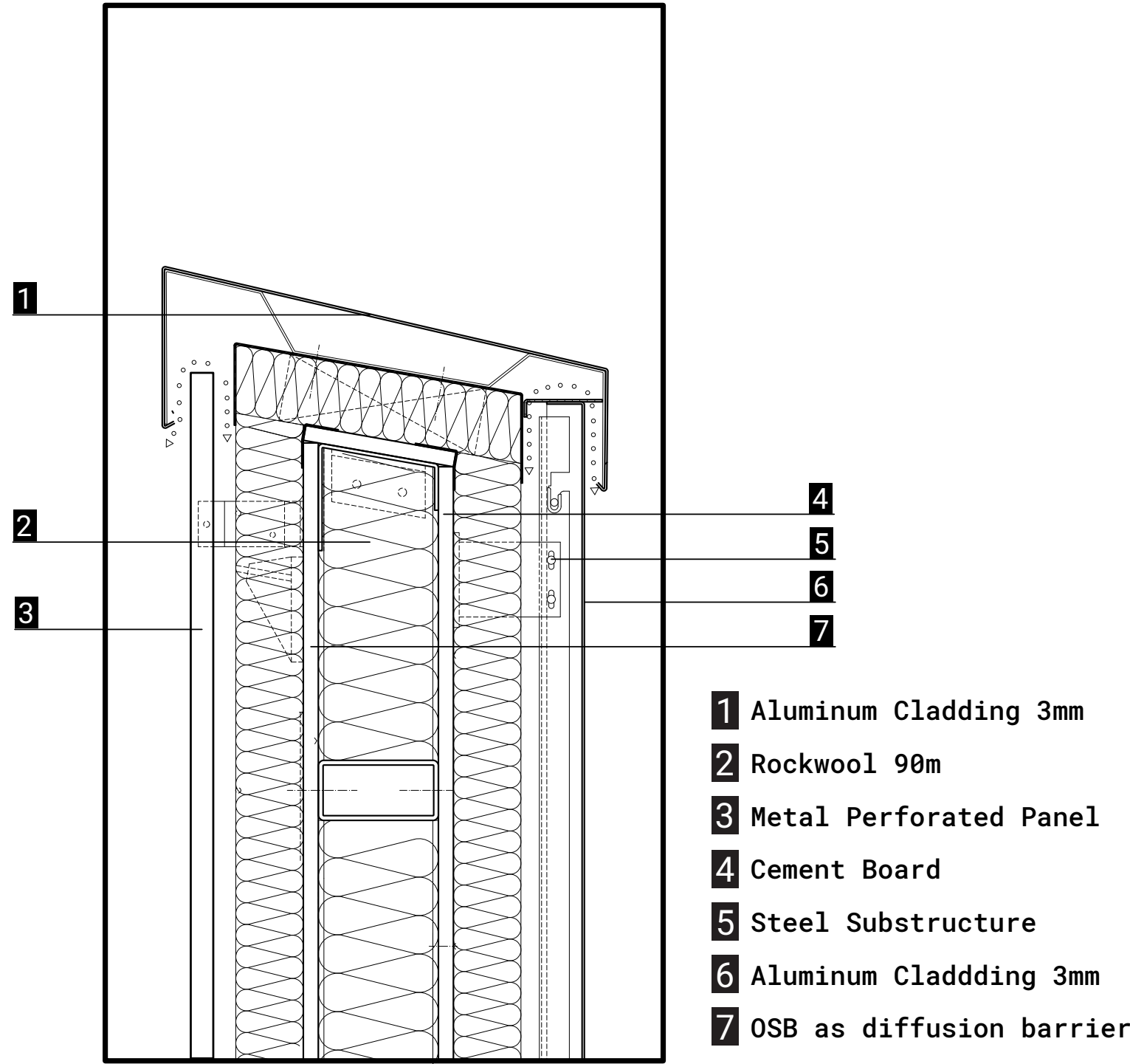
Detail II



Detail III



Detail IV



Detail V

