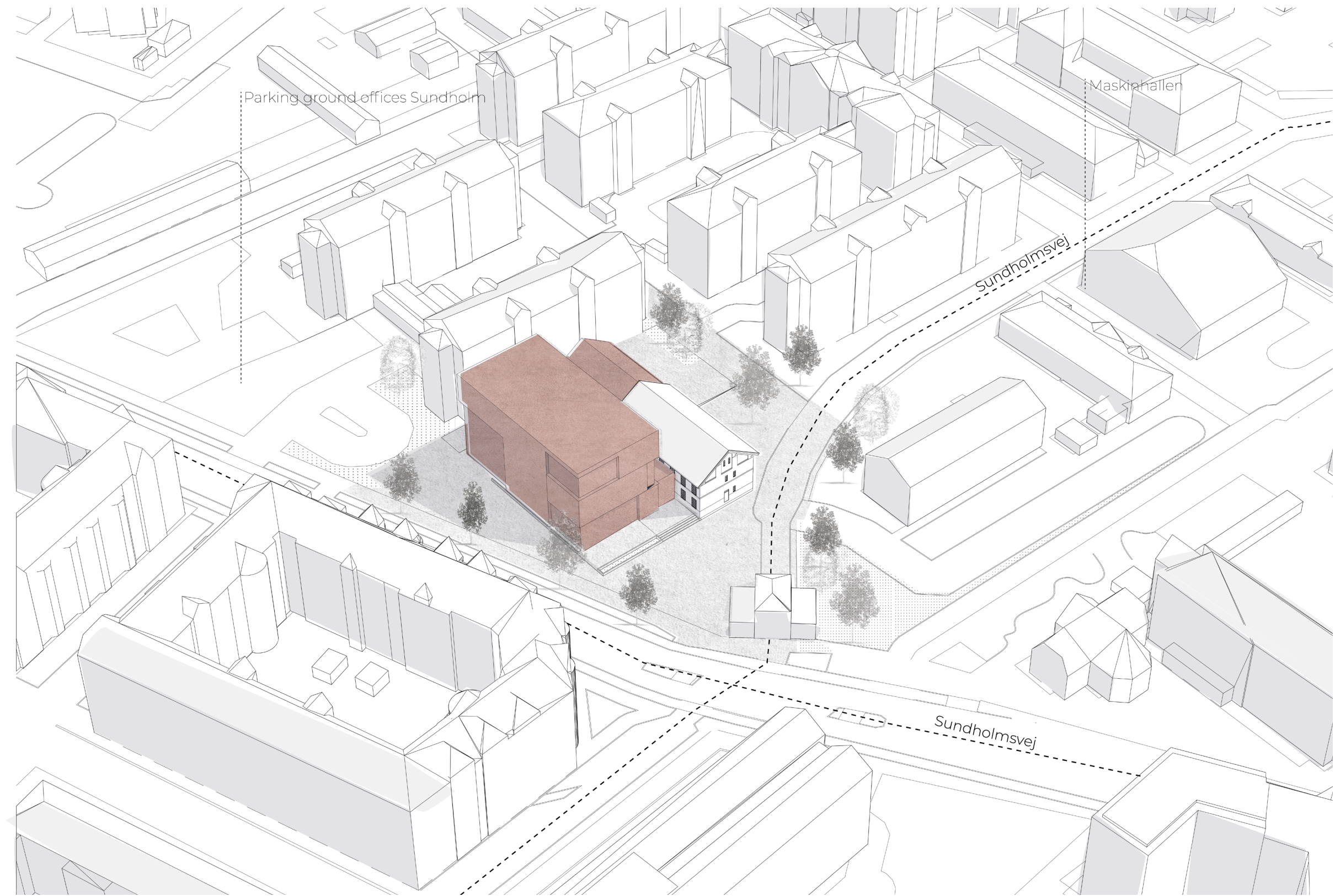
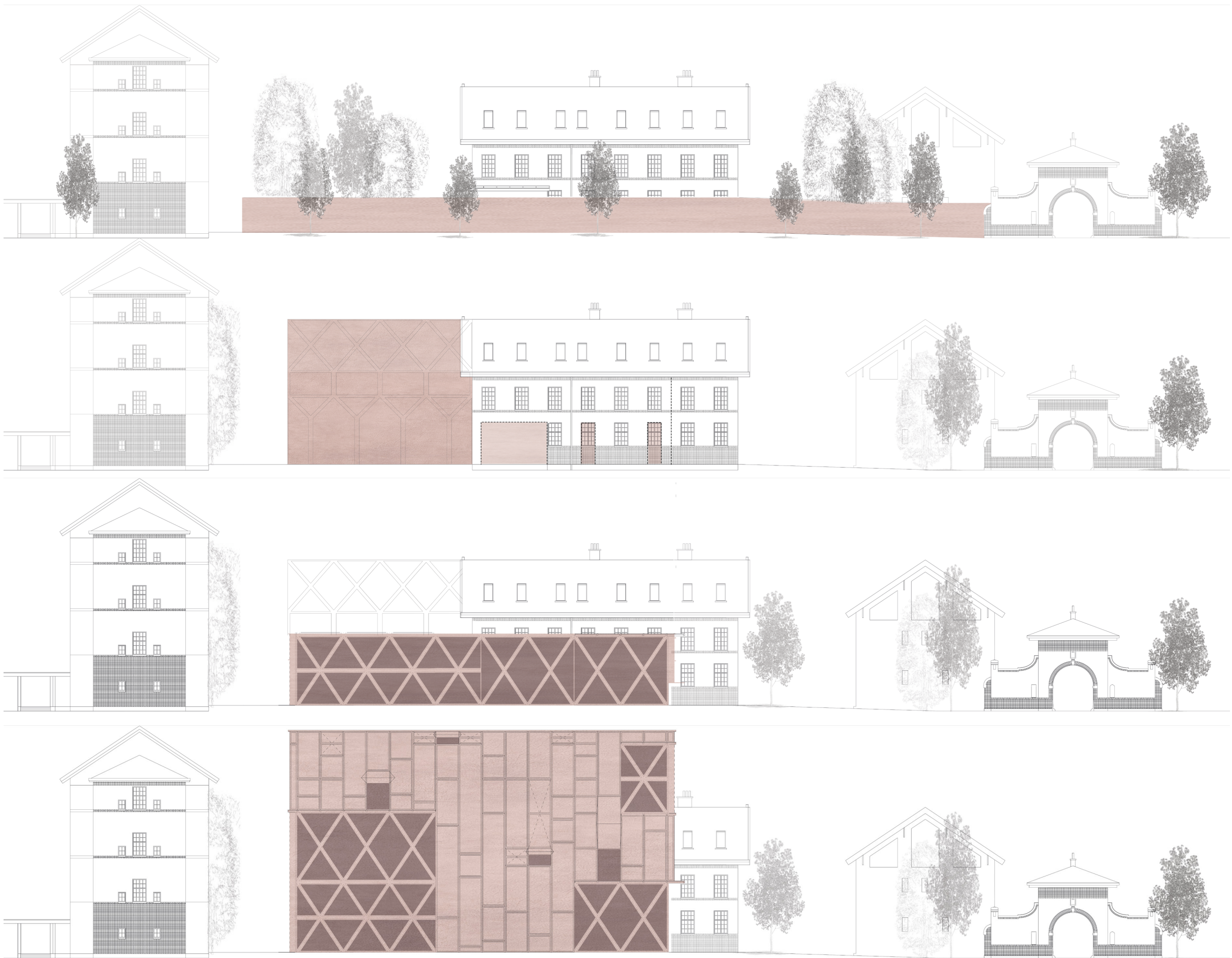




3 volumes of the public condenser, inbetween Amager and Sundholm.



Elevations of boundary transformation and 3d birds view of Sundholm and the public condenser.

AR3AP100 | Public Condenser, Copenhagen

Two public faces: Sundholm association centre

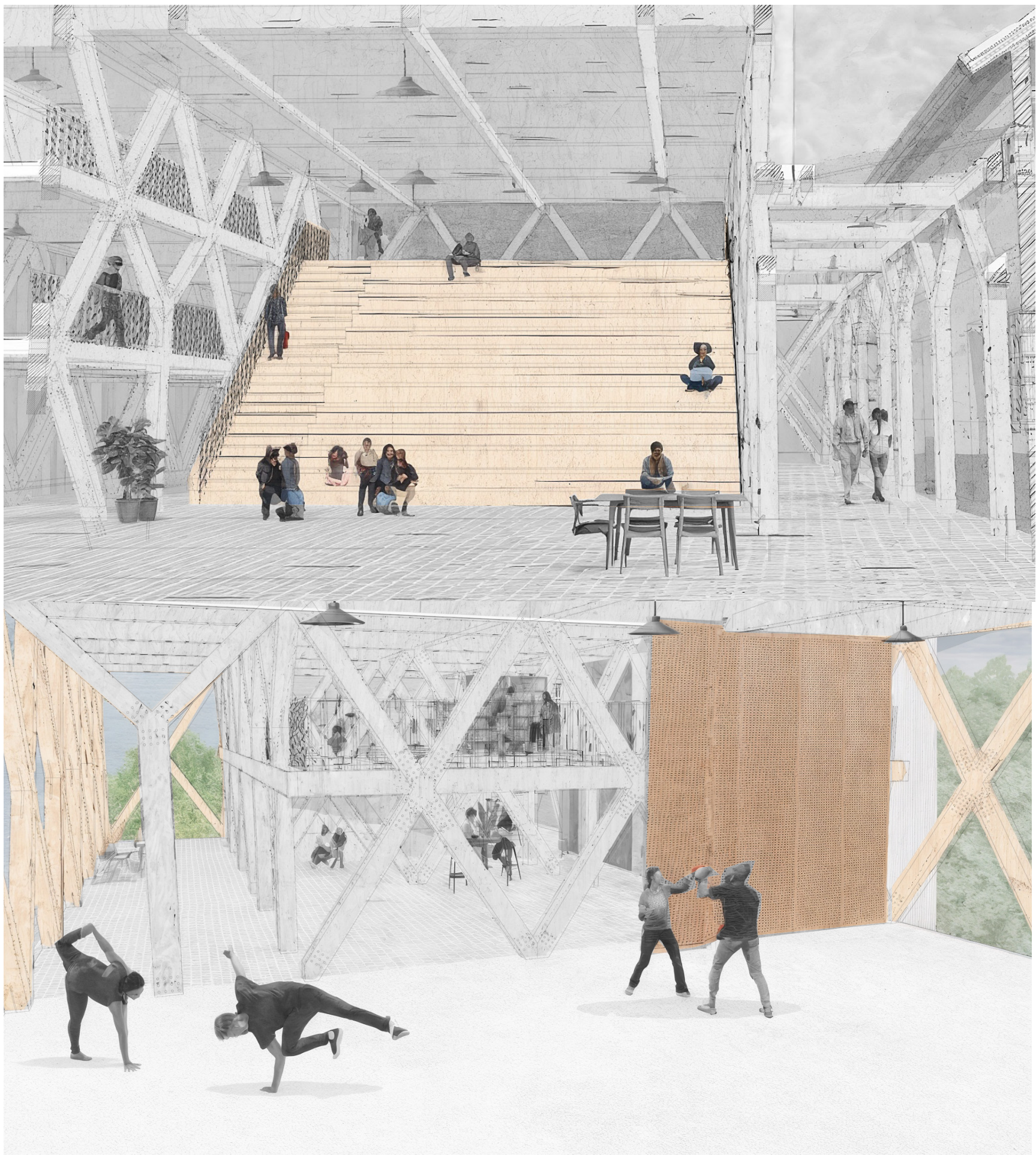
The Public Condenser marks a pivotal step in challenging the negative narrative surrounding social life in Sundholm. Known for its history of marginalized groups facing barriers to public participation, the neighborhood calls for an architectural intervention that actively encourages social interaction among strangers. This project introduces a public program and design that foster spontaneous encounters and community engagement.

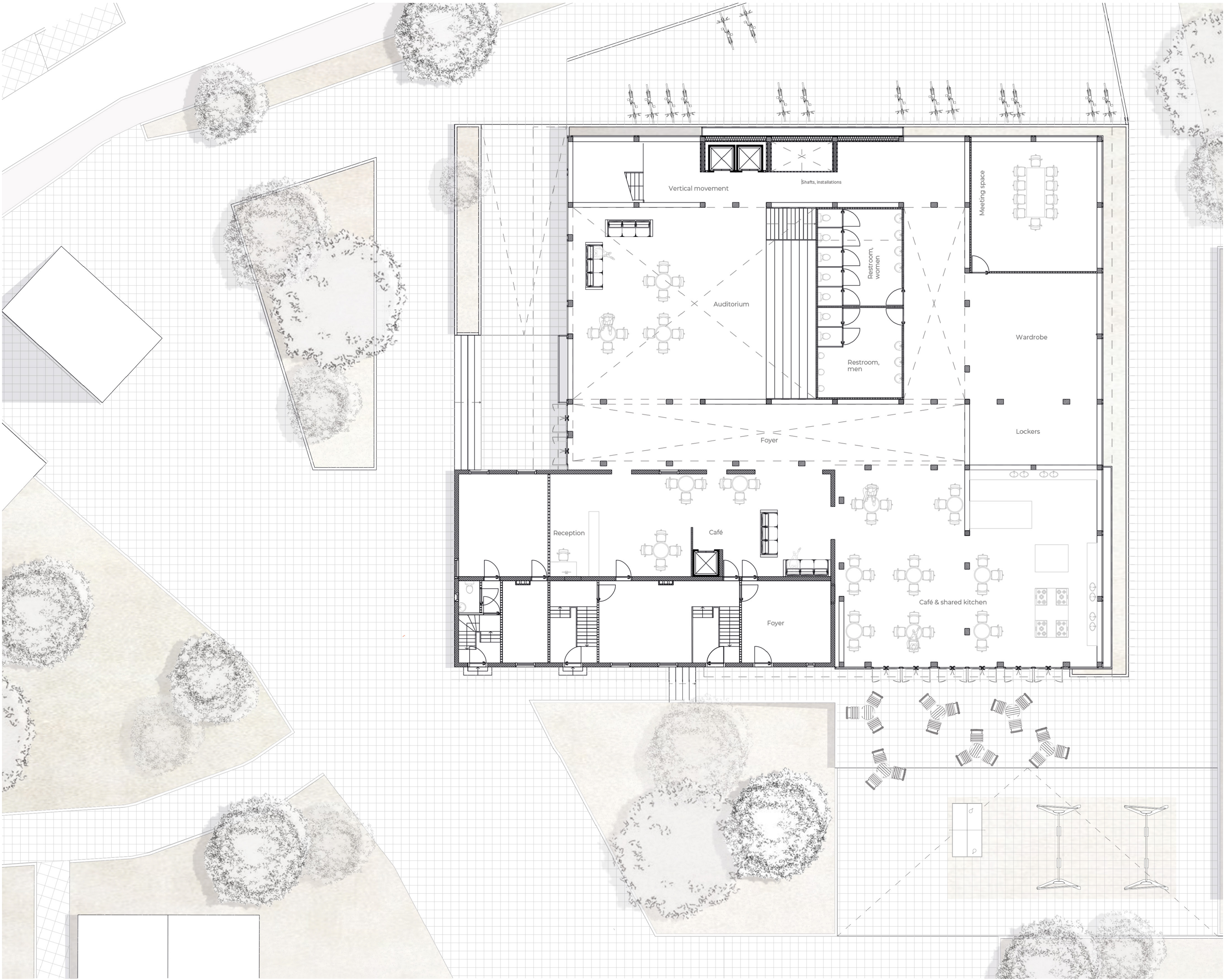
The Public Condenser aims to shift both the perception and behavior associated with Sundholm. At the heart of the design is the transformation of a former boundary, once defined by fences, barriers, and both physical and ideological separations between people and the institutional fabric of the area. By reimagining the entrance around a former gatehouse, the project makes the neighborhood more open and inviting to passersby, dismantling previous divisions.

Crucially, the Public Condenser is conceived as an extension of the existing Sundholm House 8. Currently used by NGOs and the municipality as a meeting and workspace bridging municipal functions and the southern part of Copenhagen, the addition brings new spatial capacity and renewed public identity to the site. Through its scale and civic character, the extension elevates the status of these important functions.

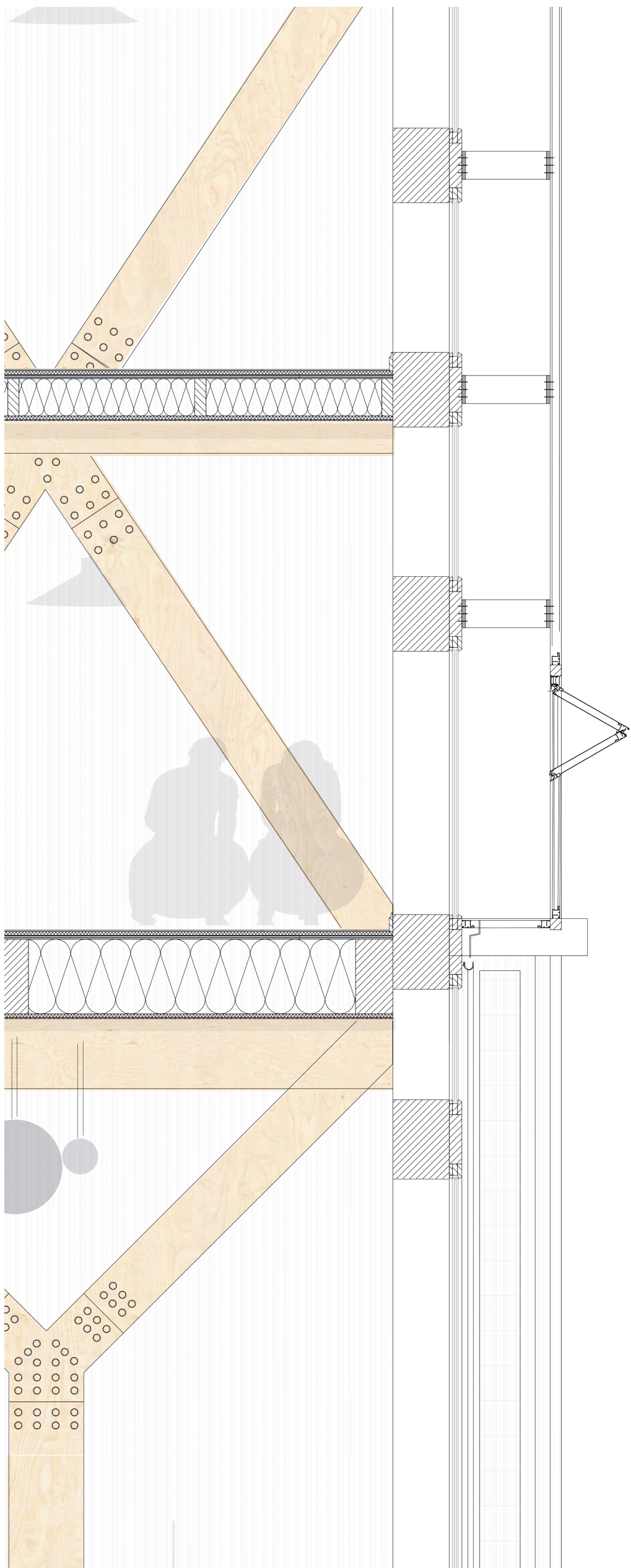
The interior design is grounded in the principles of both literal and phenomenal transparency. Promoting a visual and spatial continuity between interior and exterior environments. Constructed with timber cross-beams and Y-shaped columns, the architecture supports a fluid spatial experience. Staircases double as social meeting points, allowing different spaces to connect without requiring formal circulation. In doing so, the project unifies two aims: enabling genuine social inclusion while also creating moments of social attraction, together forming the singular purpose of the Public Condenser.

Bas Willem Jonker
18.06.2025
Public building graduation studio





Floorplan of public condenser and direct surrounding: two public squares. One entrance, representable public the other more hidden and private meeting garden. N

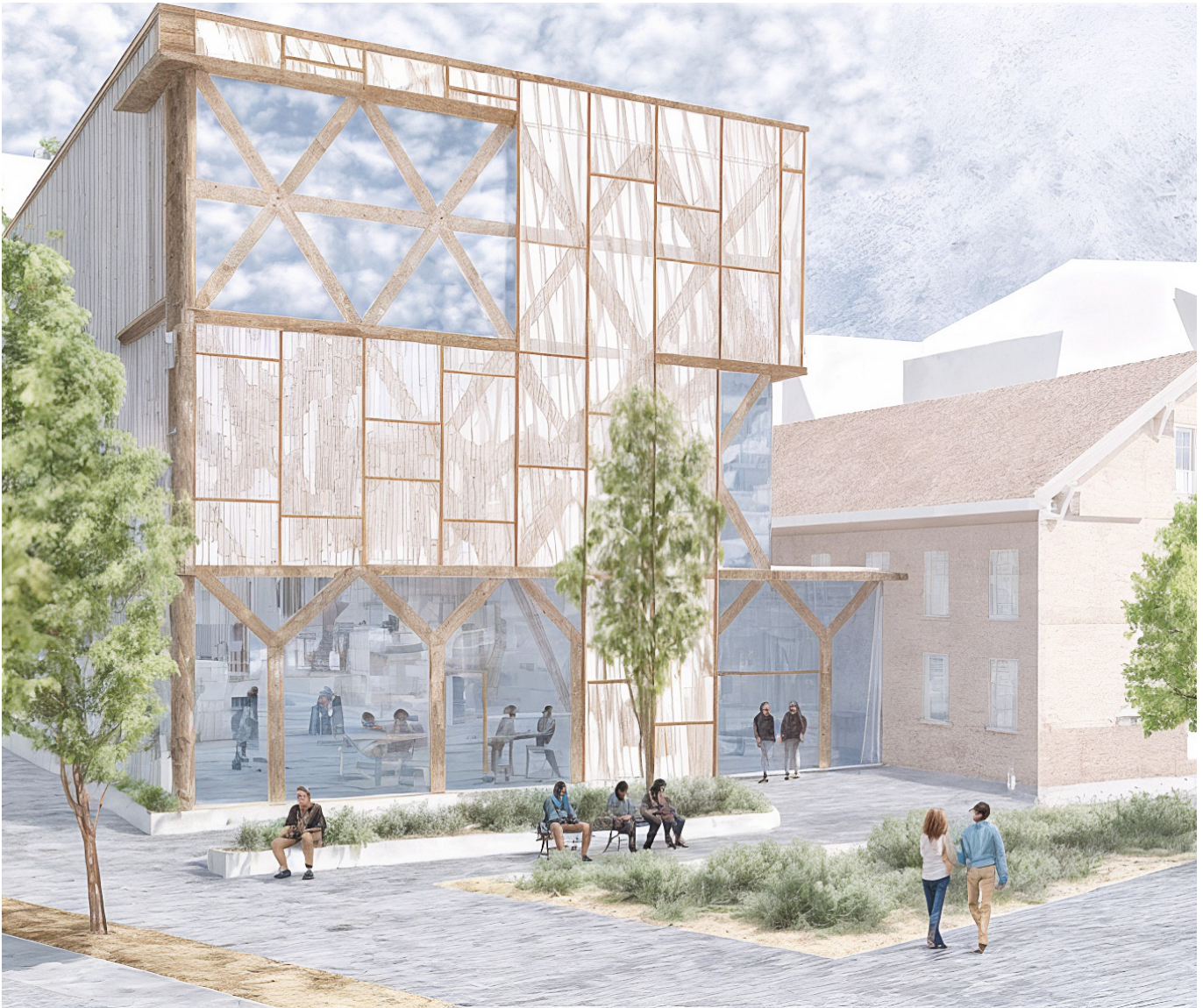


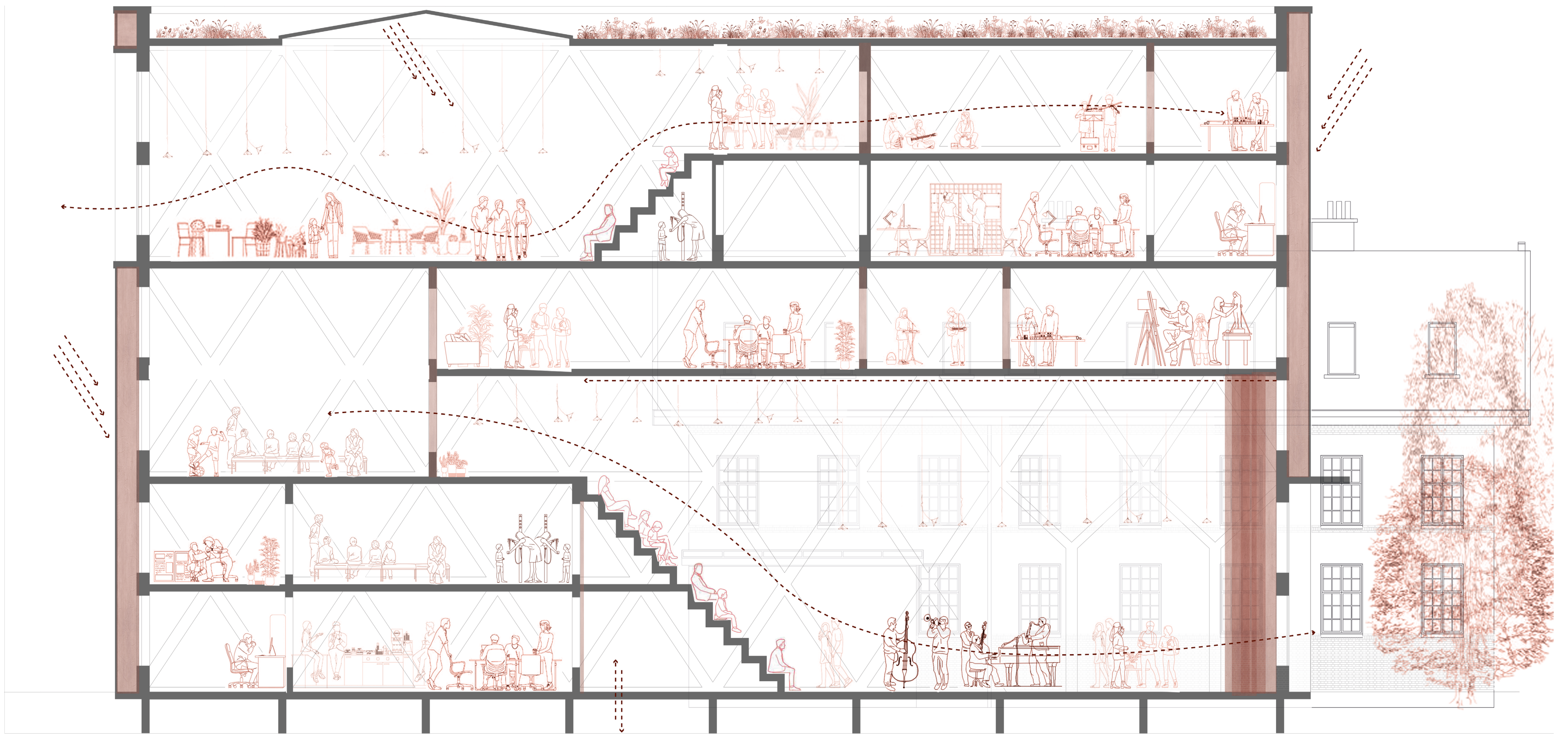
This design explores the dialogue between two interconnected public spaces, each with a distinct character but intentionally positioned to create a dynamic spatial and social relationship. The first public entrance is open and extroverted, a plaza or forecourt exposed to the city, encouraging gathering, movement, and visibility. The local face, directed to Sundholm, is intimate and introspective. A meeting garden and terrace offering pause, reflection, or quieter interaction.

Rather than treating these as isolated zones, the design uses spatial sequencing, sightlines, and program overlap to allow the two spaces to inform one another. Movement between them is porous and suggestive, facilitated by gradients in scale, material, and transparency. The thresholds, whether framed by structure, softened by landscape, or mediated through shared functions, become sites of exchange and friction, where different rhythms of public life collide.

By placing complementary but contrasting functions across these spaces, markets and performances in the open area, reading rooms or cafés in the quieter zone, the design encourages users to traverse, linger, and cross paths. The resulting choreography supports both planned and spontaneous meetings, making the connection between the two public realms not just physical, but social and experiential.

Fragment & visual impact of the entrance to the public condenser & Sundholm from Amager perspective.



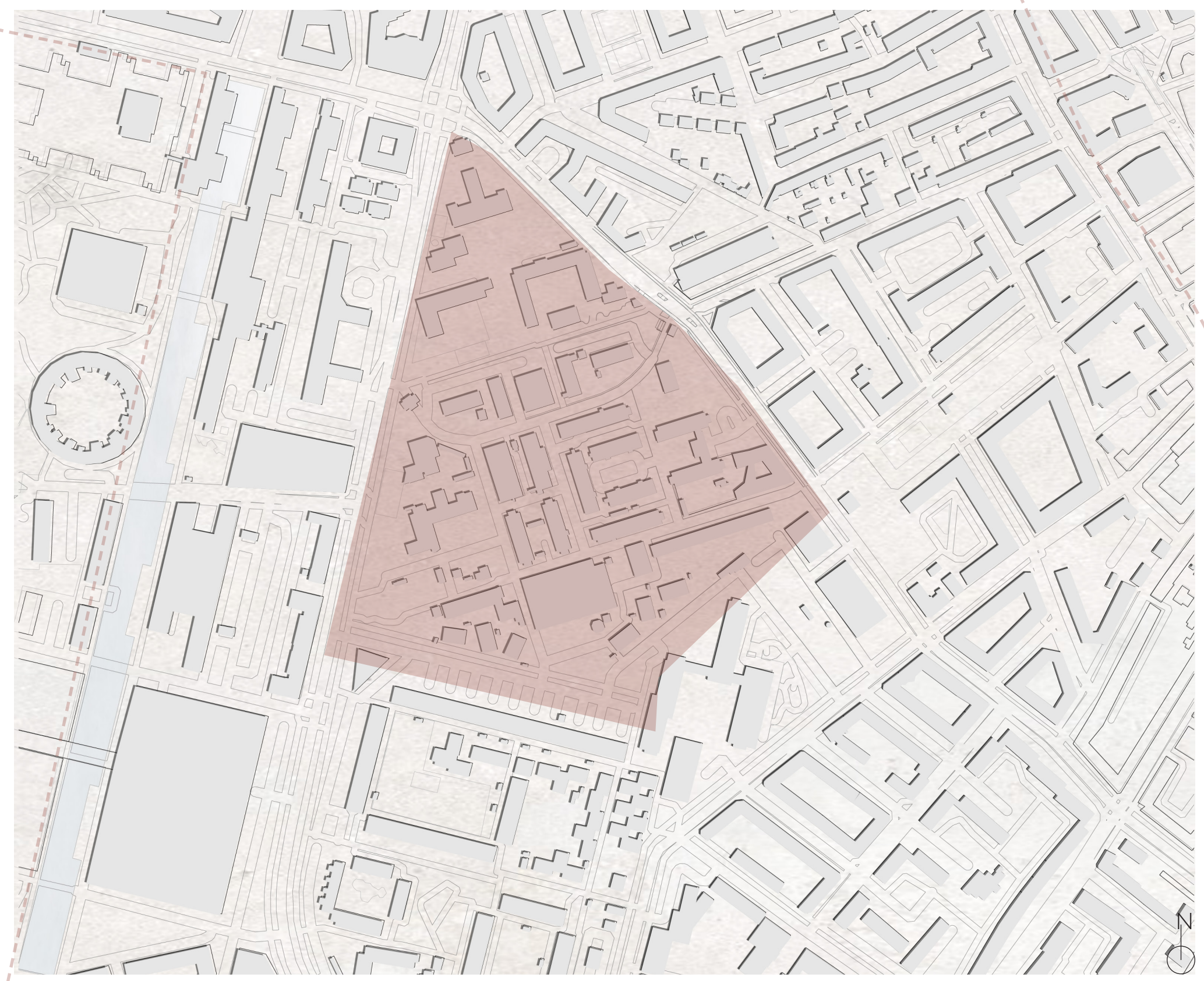


Section over building. Hybridity between spaces and functional use of the Double Skin Façade.

The timber crosses allow spaces to be connected without the possibility of travelling through them. By combining many of these spaces connections between functions and possible social groups might be formed. By adding this public condenser that shapes the interaction of its users the function of Sundholm inbetween the centre of Amager and the university might offer a first step into the formation of a horizontal network.



Façade & section local meeting garden.



Area plan of Sundholm and surroundings (1:5000)

