

Together on the edge  
between land and sea

# | The mudflat symbionts

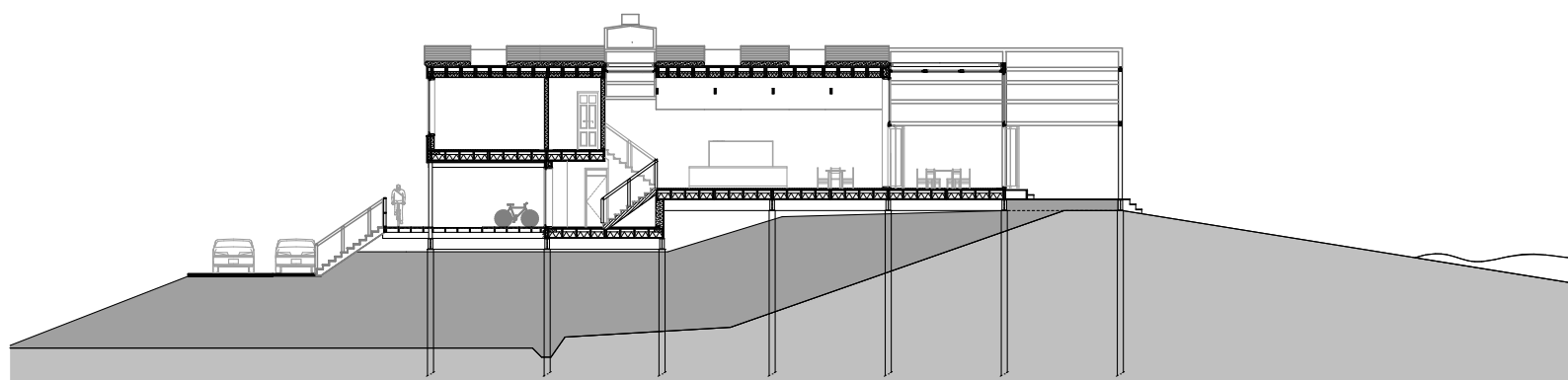
Architecture

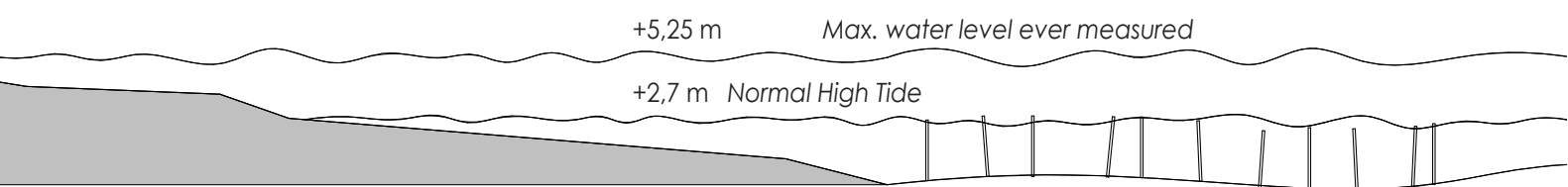
AR3TT015 Transitional Territories  
MSc Architecture, Technical University Delft

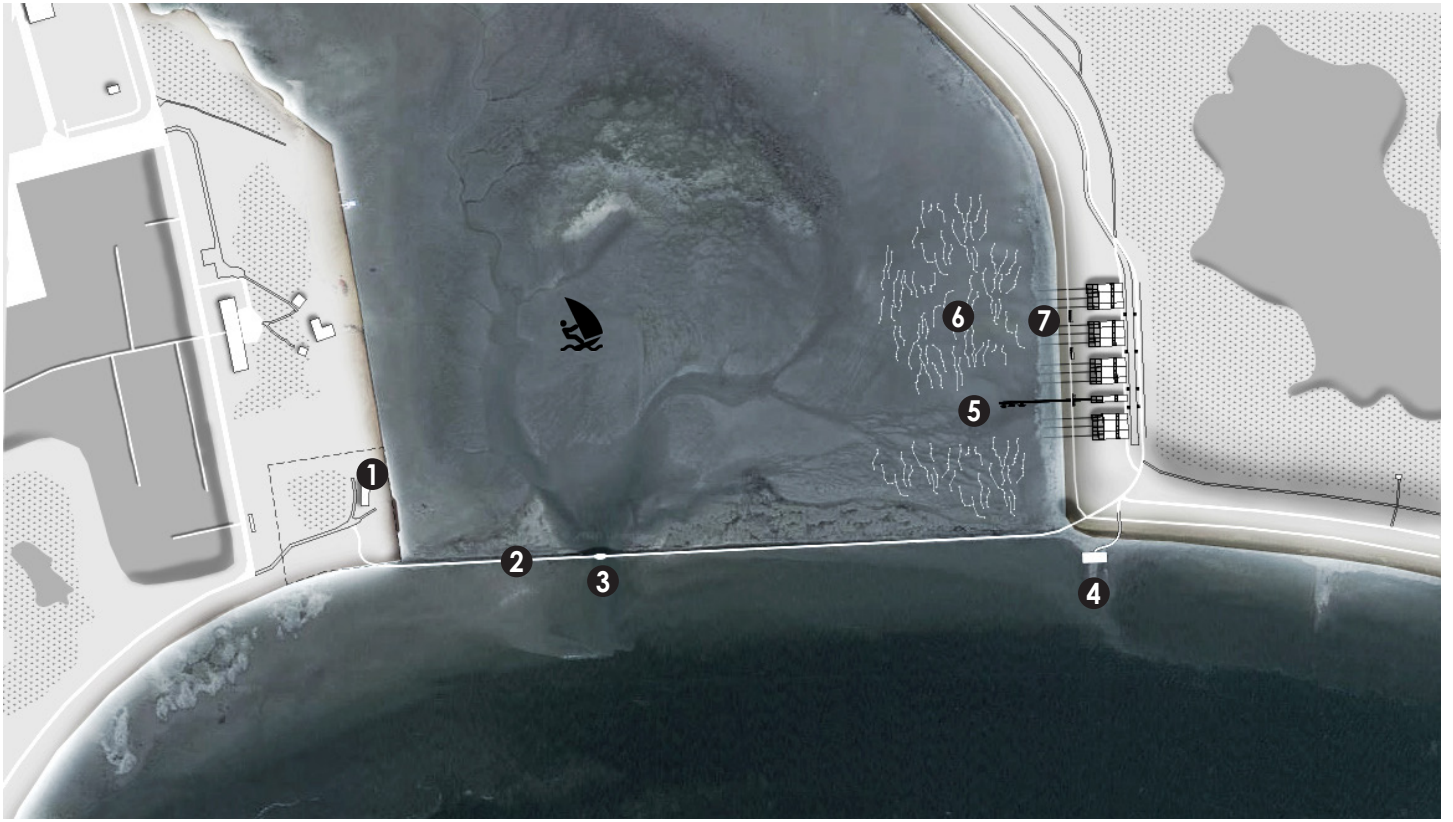
**Anneloes van Slooten**

Student number: 4655230

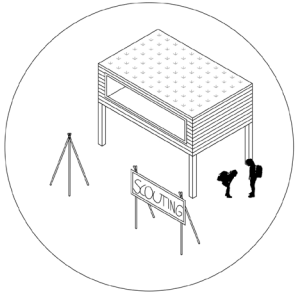
August 2020



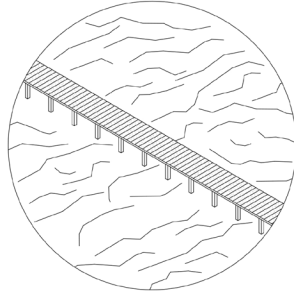




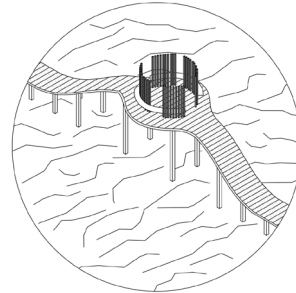
**1** Scouting



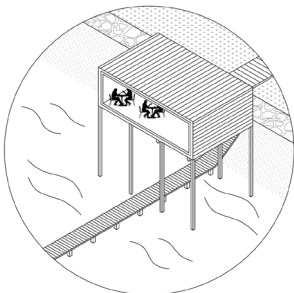
**2** The Wadden Sea path



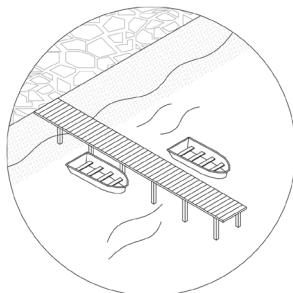
**3** Observation deck



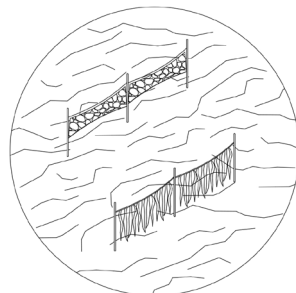
**4** Restaurant



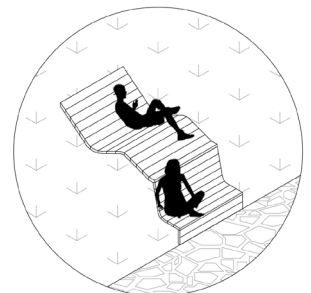
**5** Jetty



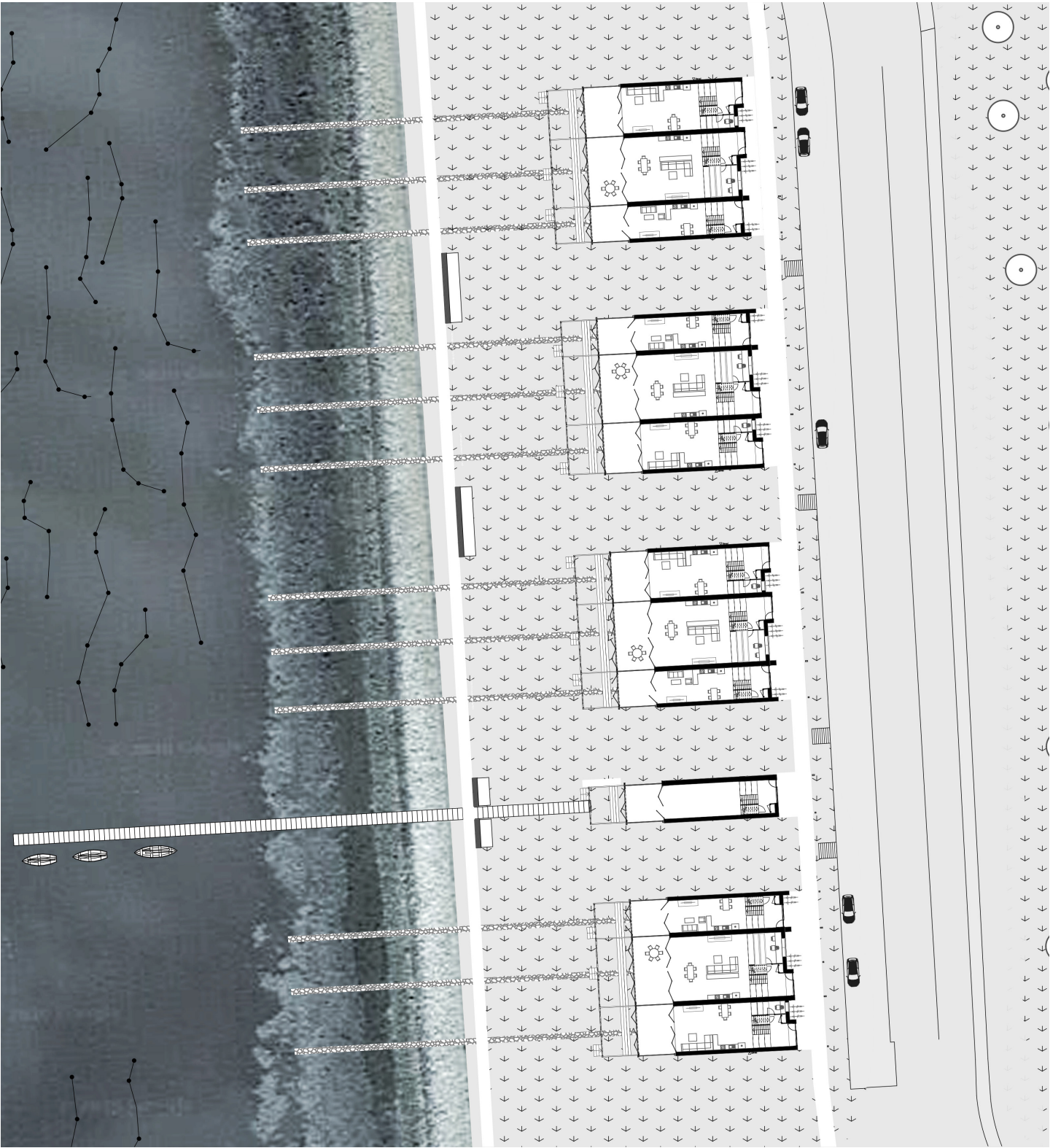
**6** The mudflat farm



**7** Dike benches

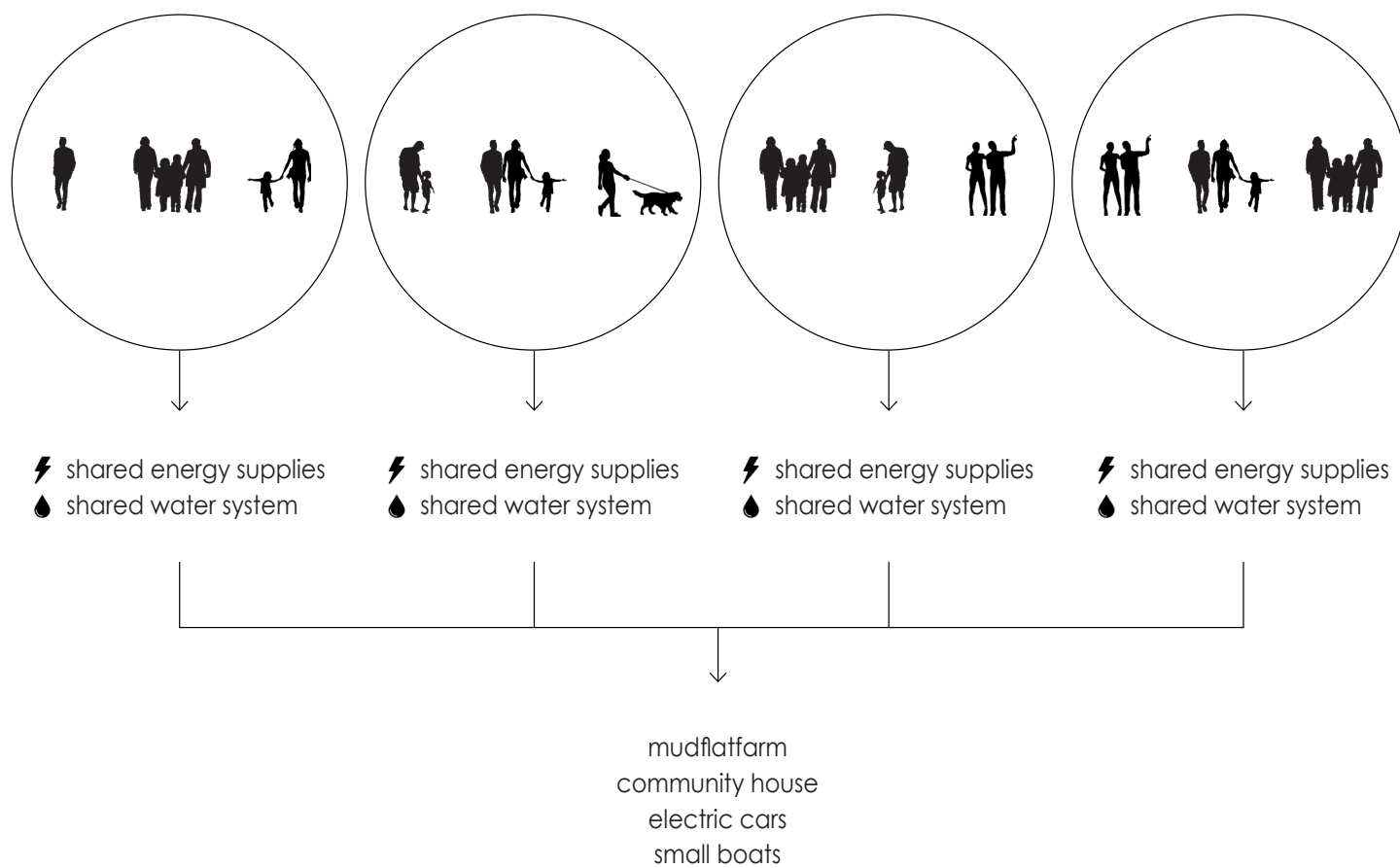




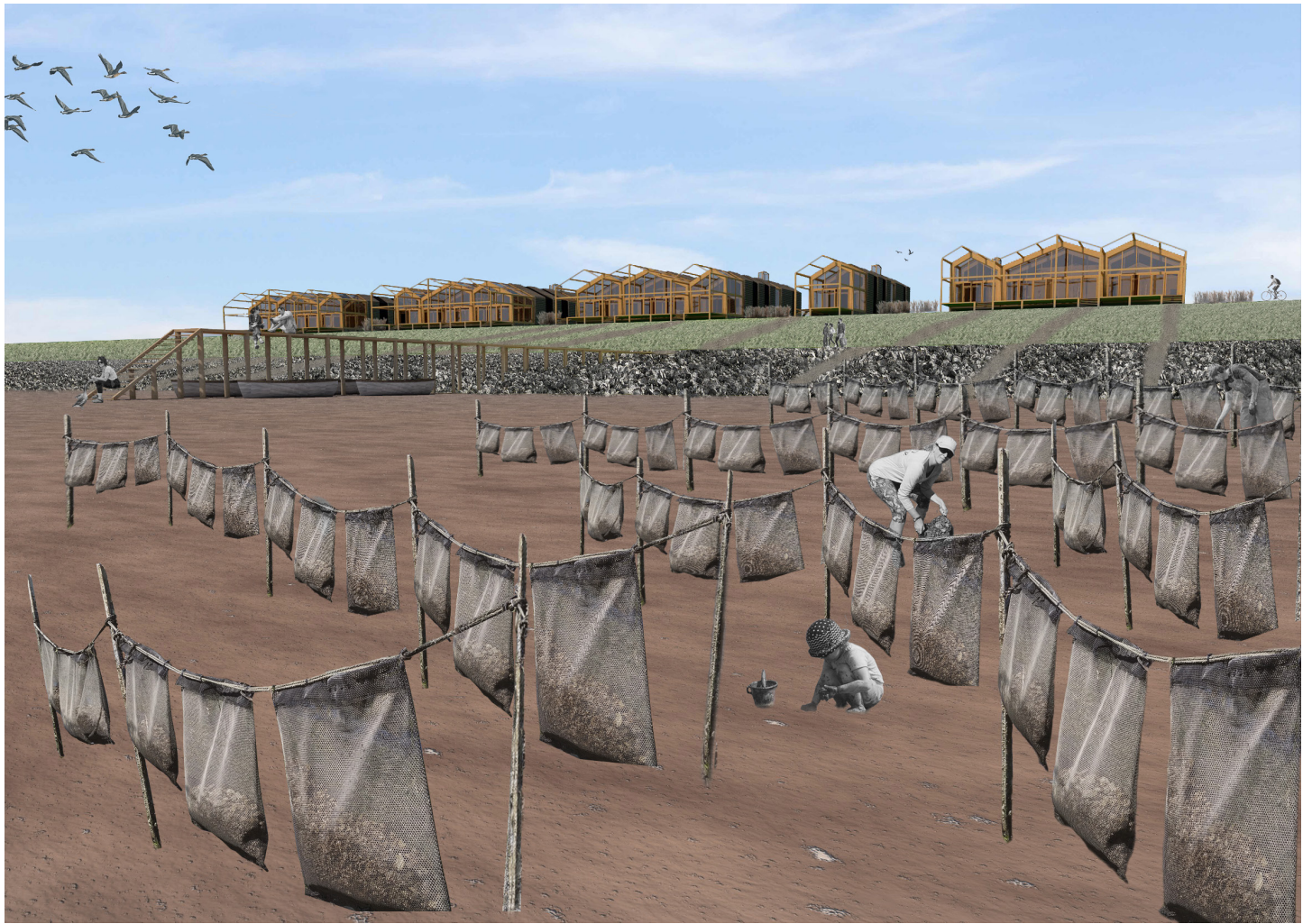


Together on the edge between land and sea  
*The mudflat symbionts*

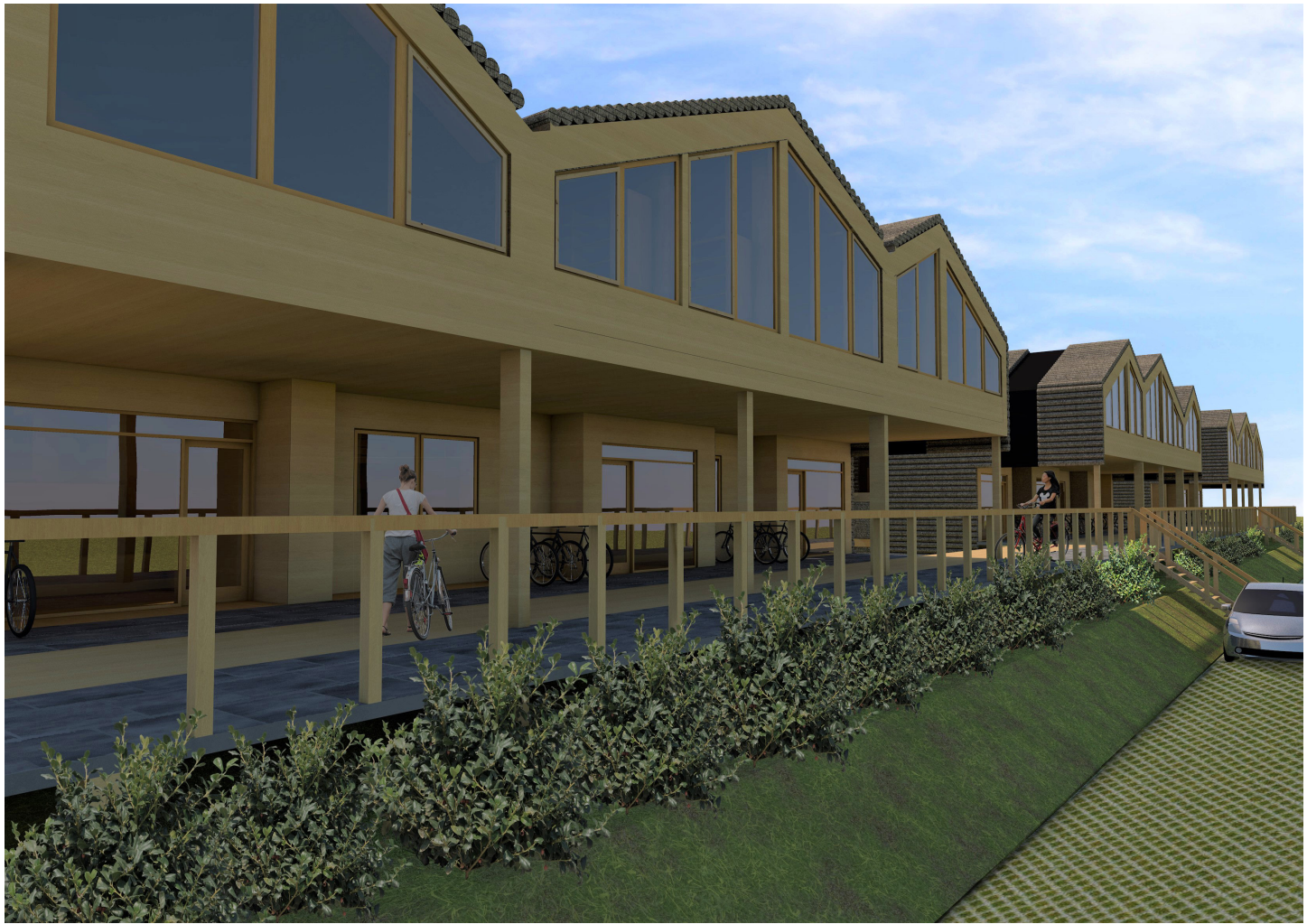
4 clusters with 3 different households:

















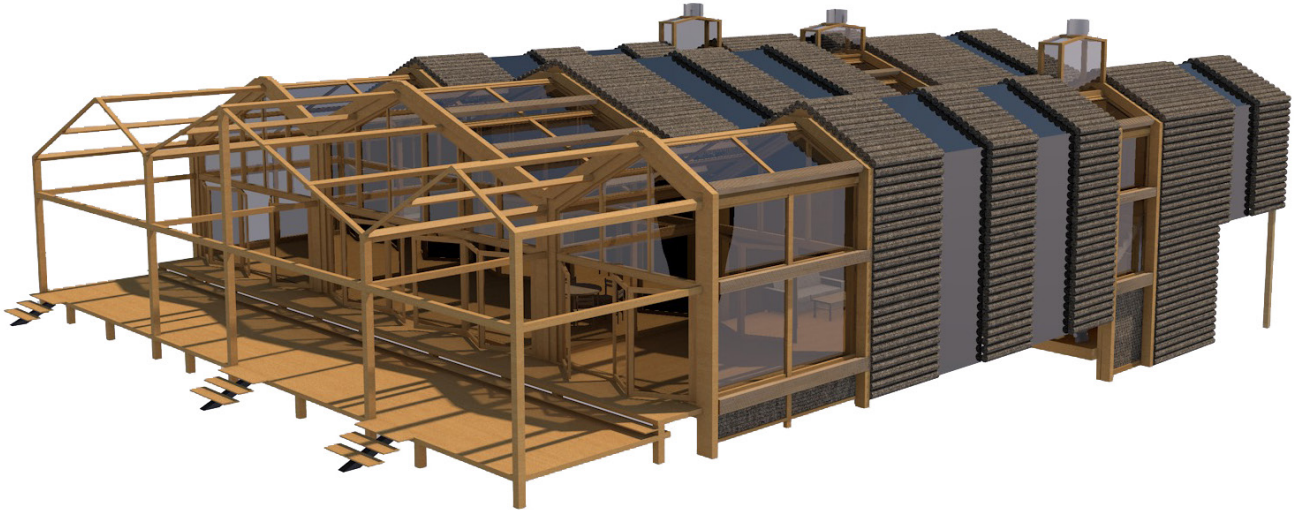




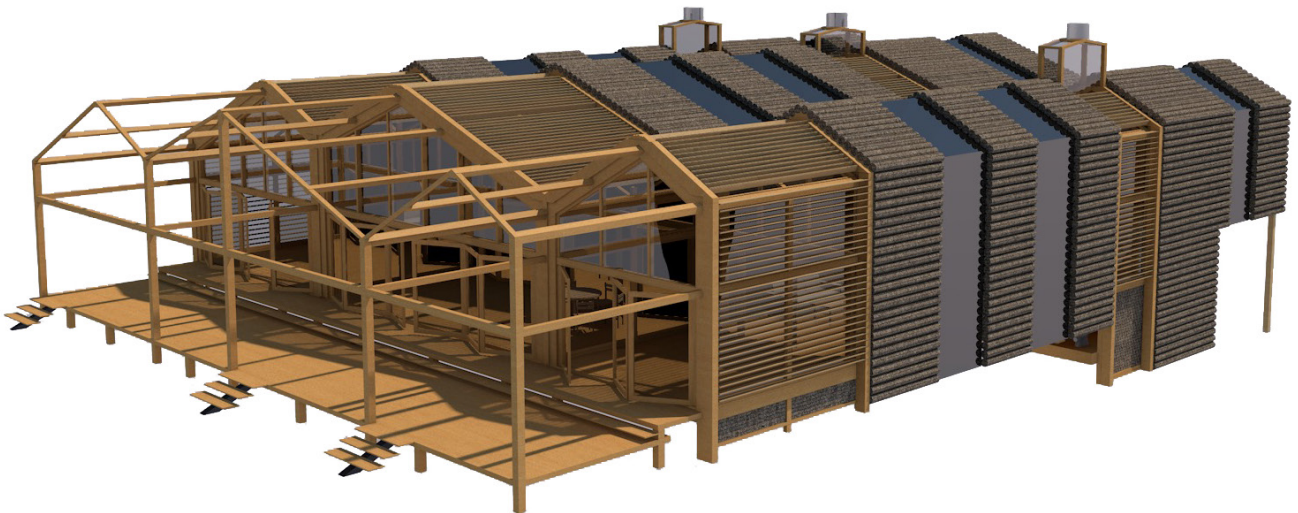


## Sun shading

- open



- semi closed



- closed





East facade



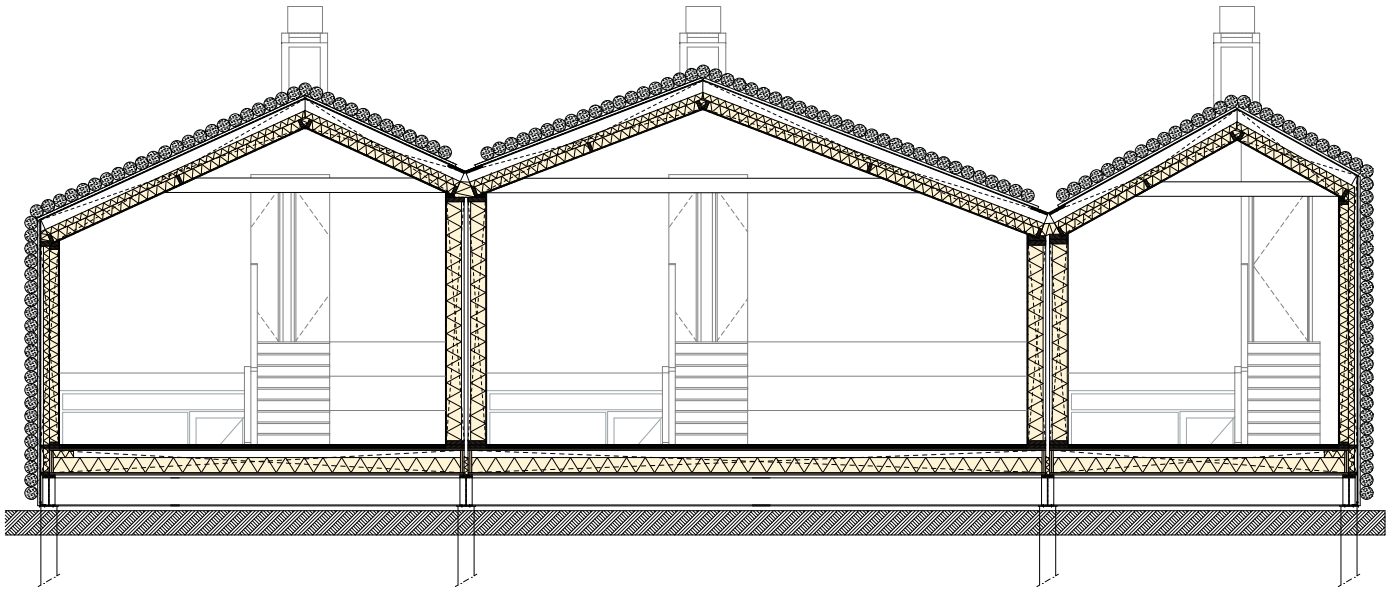
North and South facade



West facade







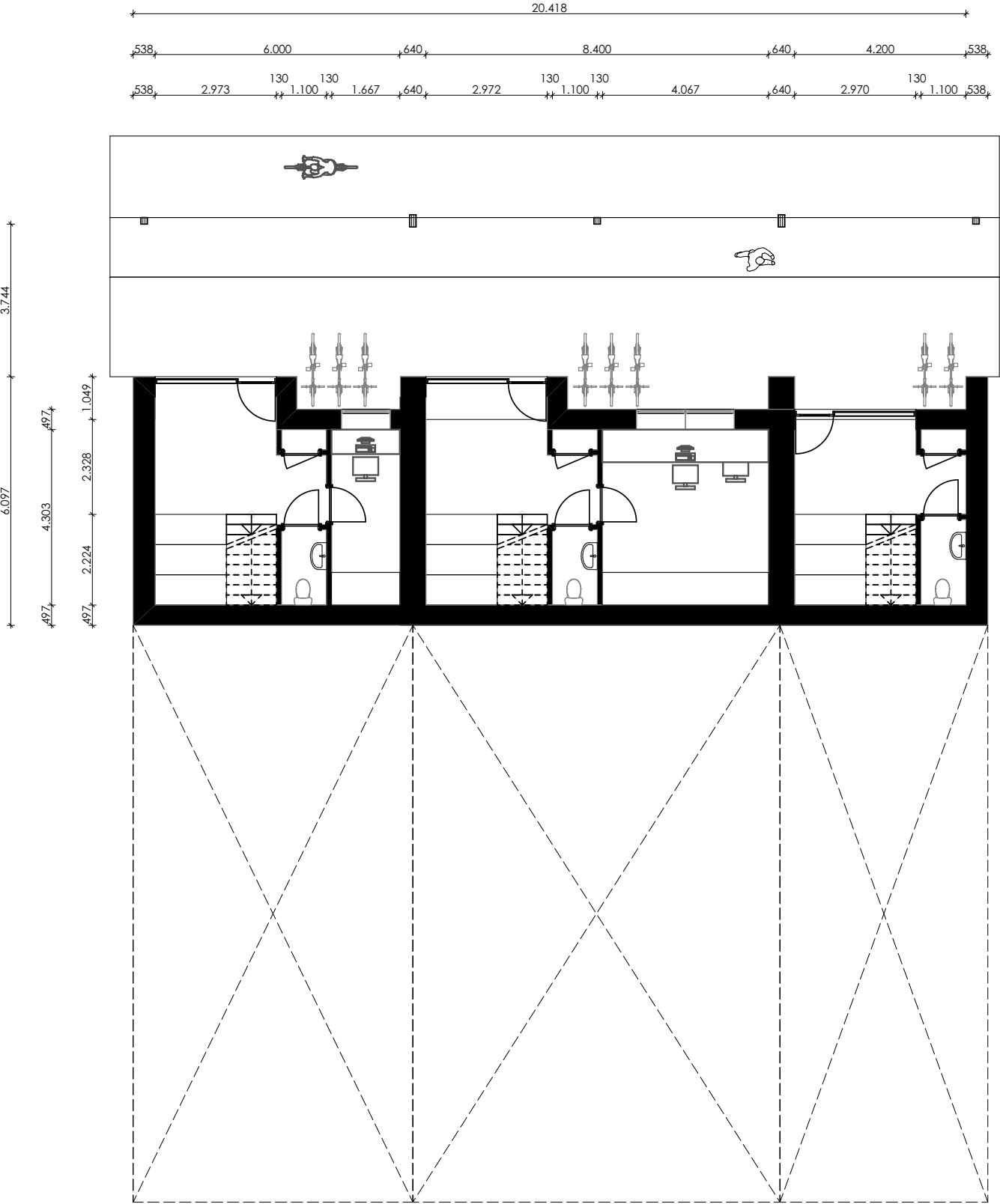
Choosing your own seaweed interior wall finish:



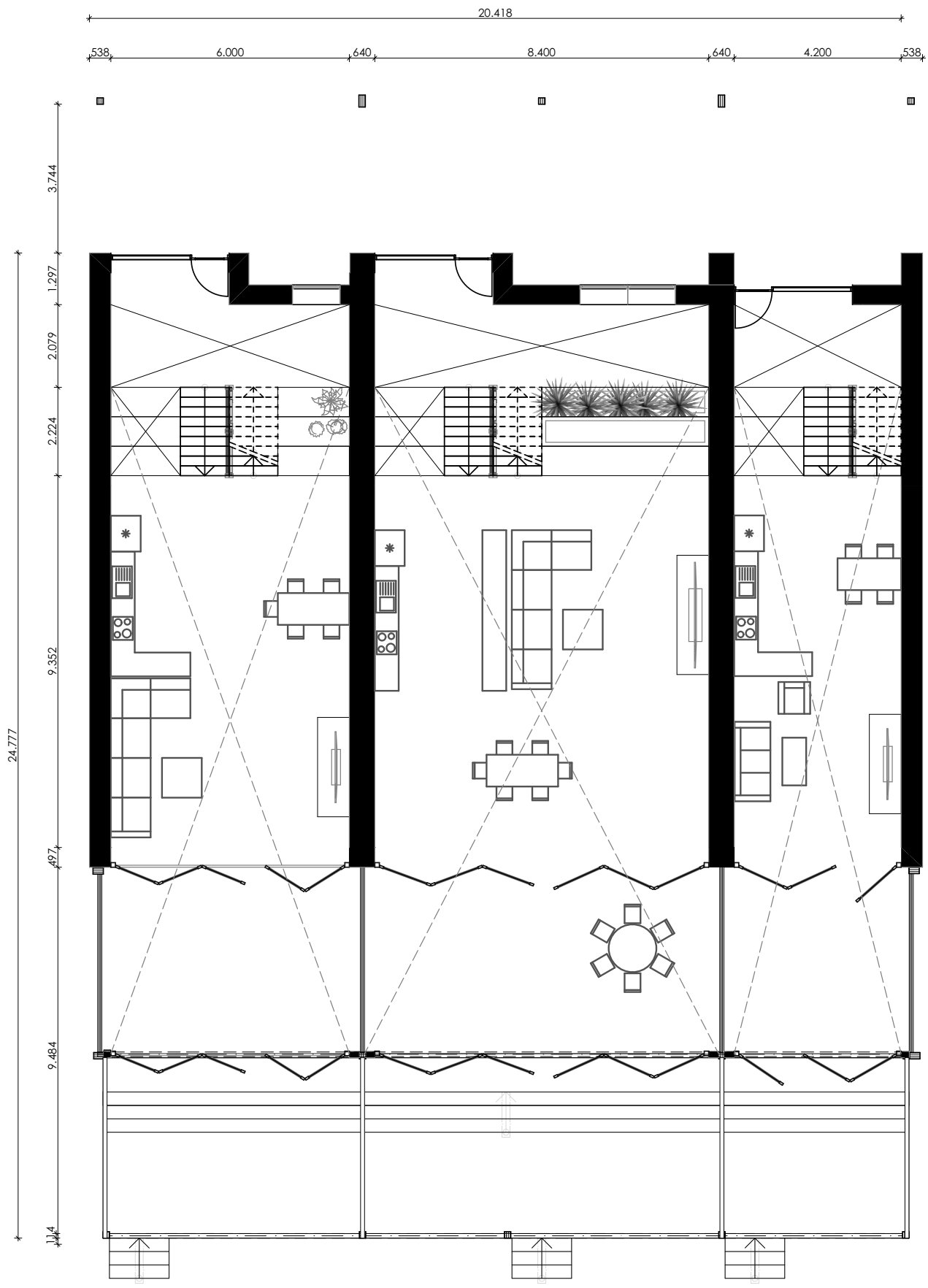
Terror material, texture and colour (Edvard, J., n.k.)



First floor (P=6070)



Second floor (P=7670)



# Third floor (P=9270)

