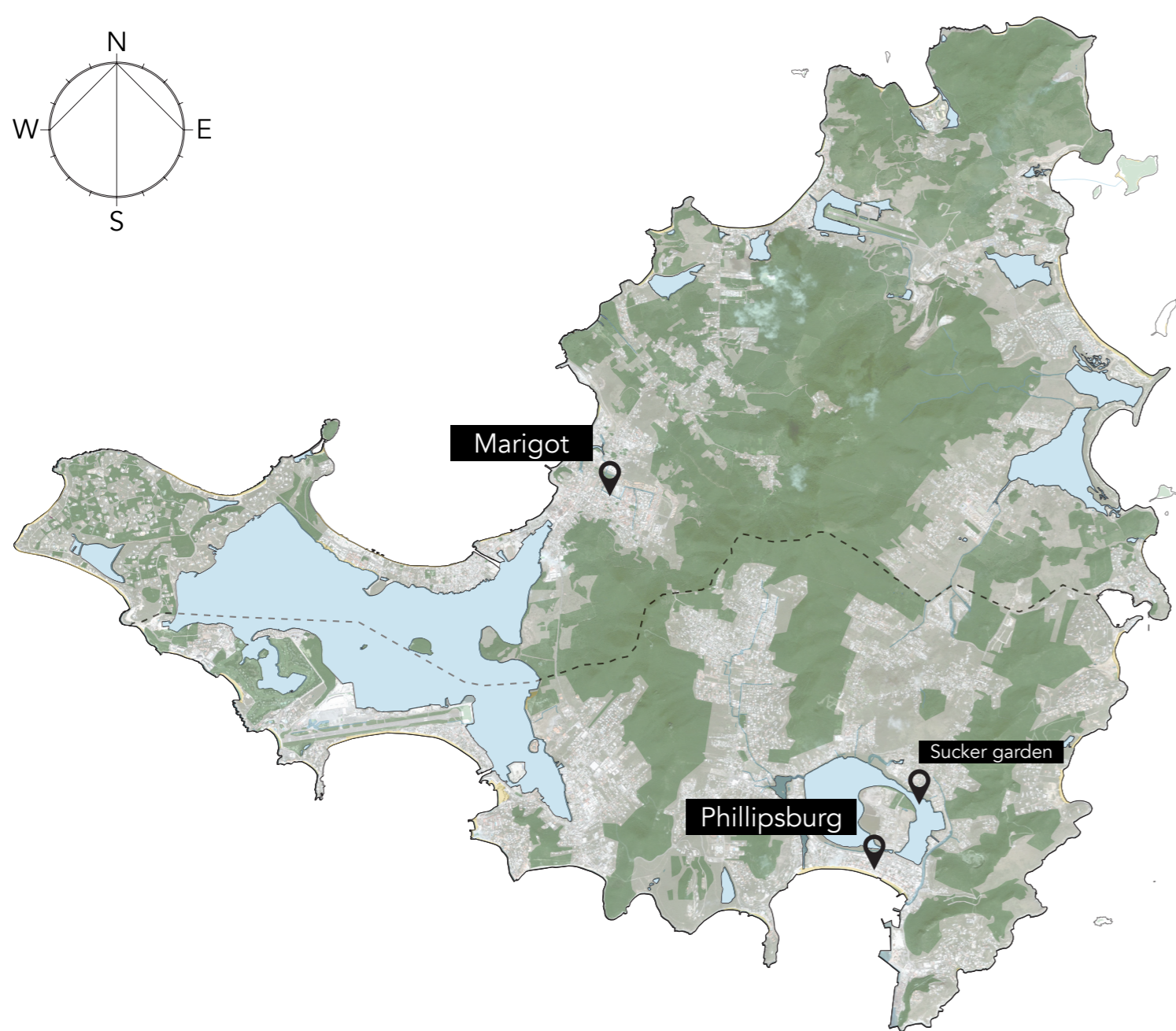
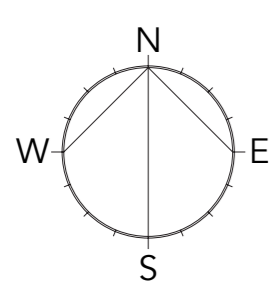
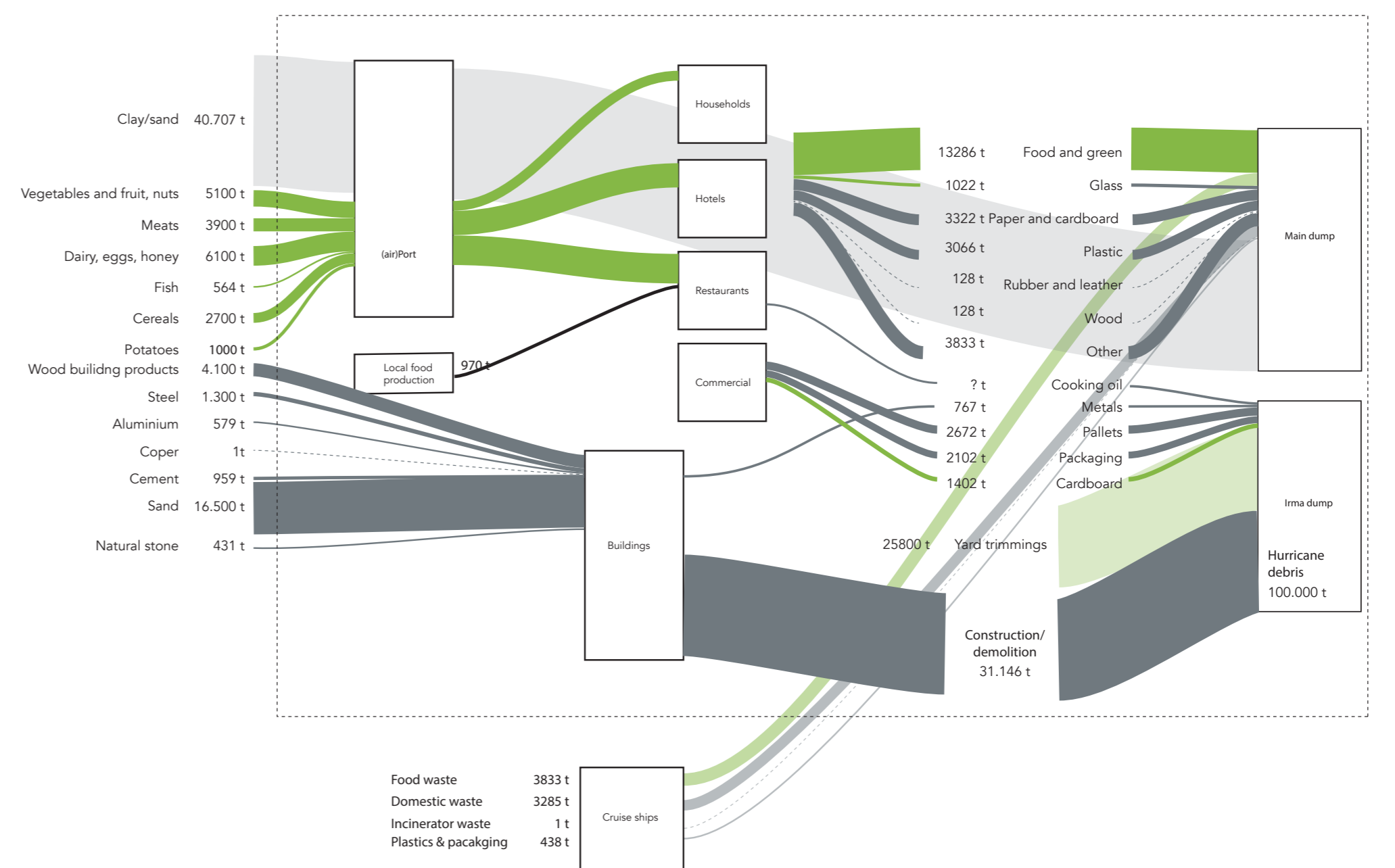


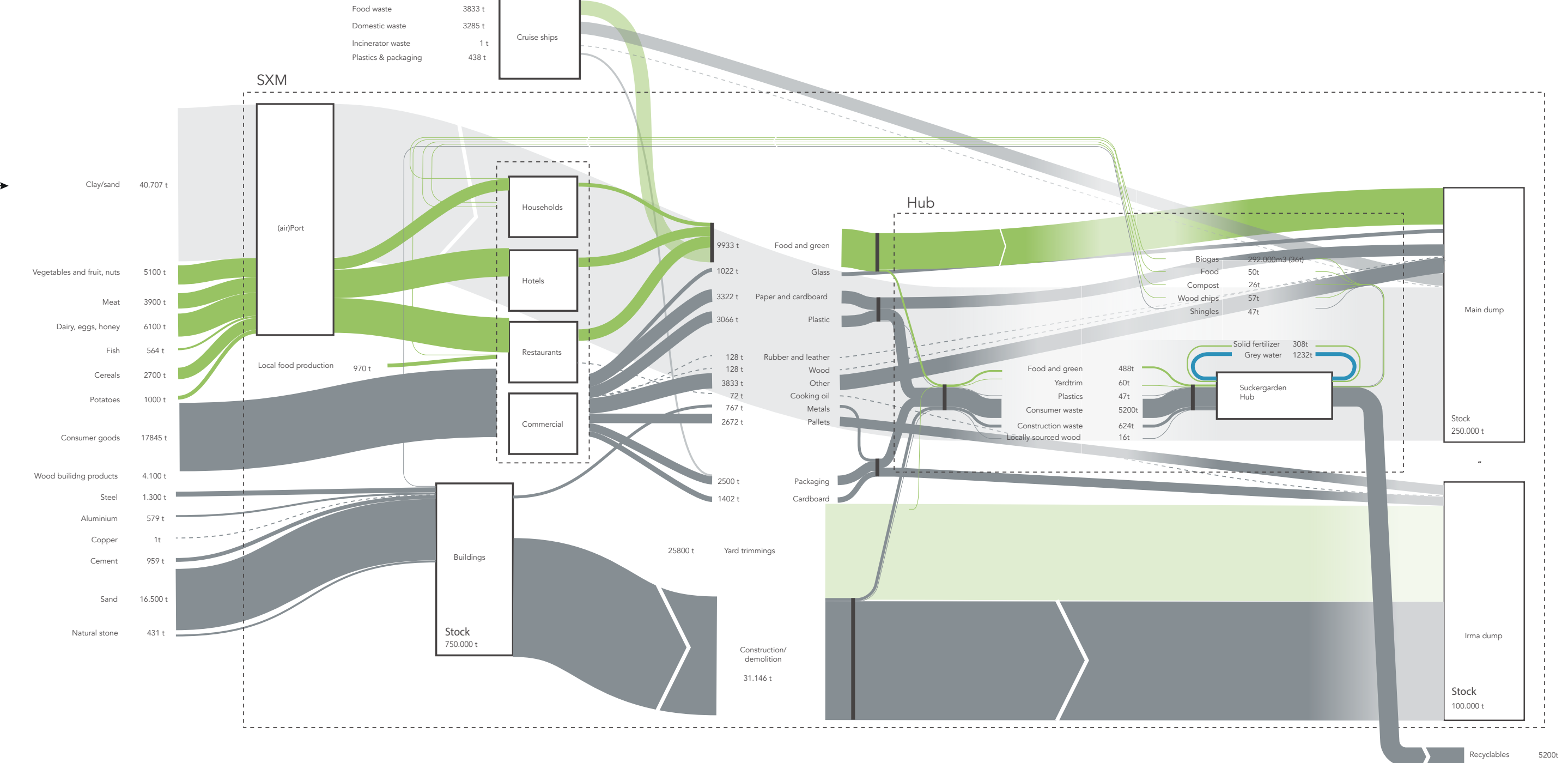
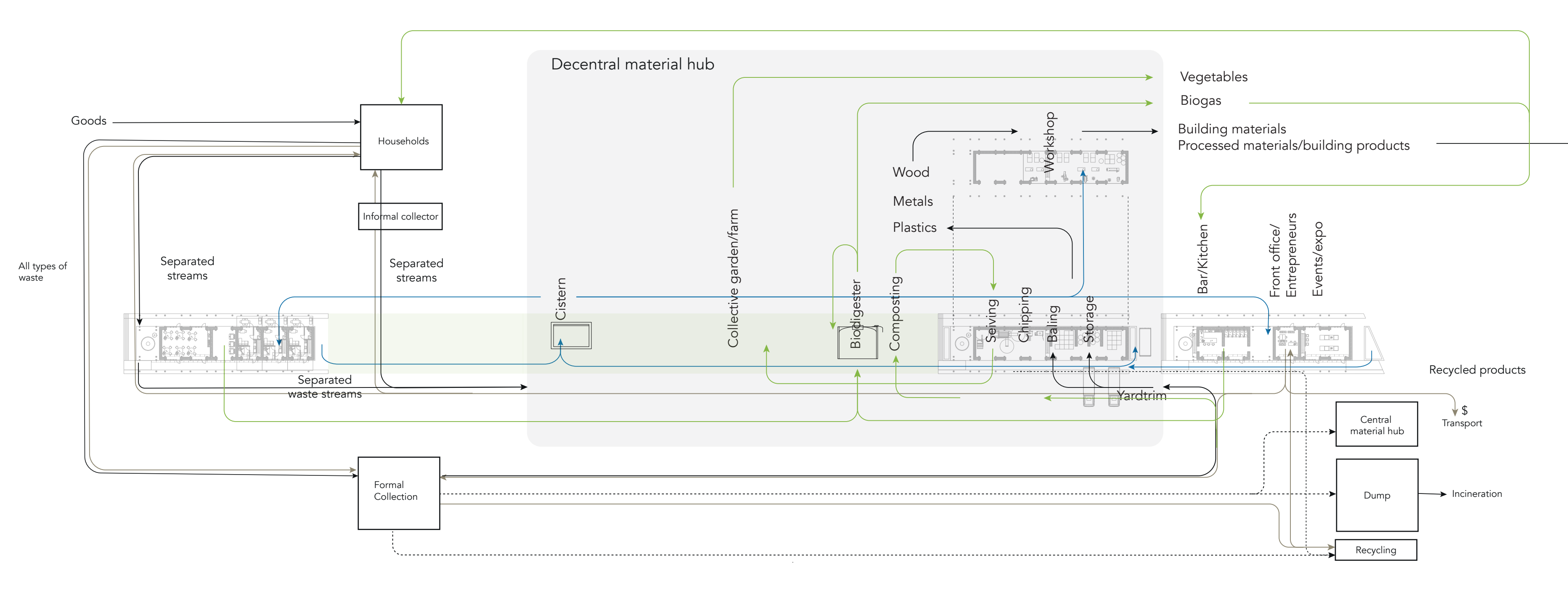
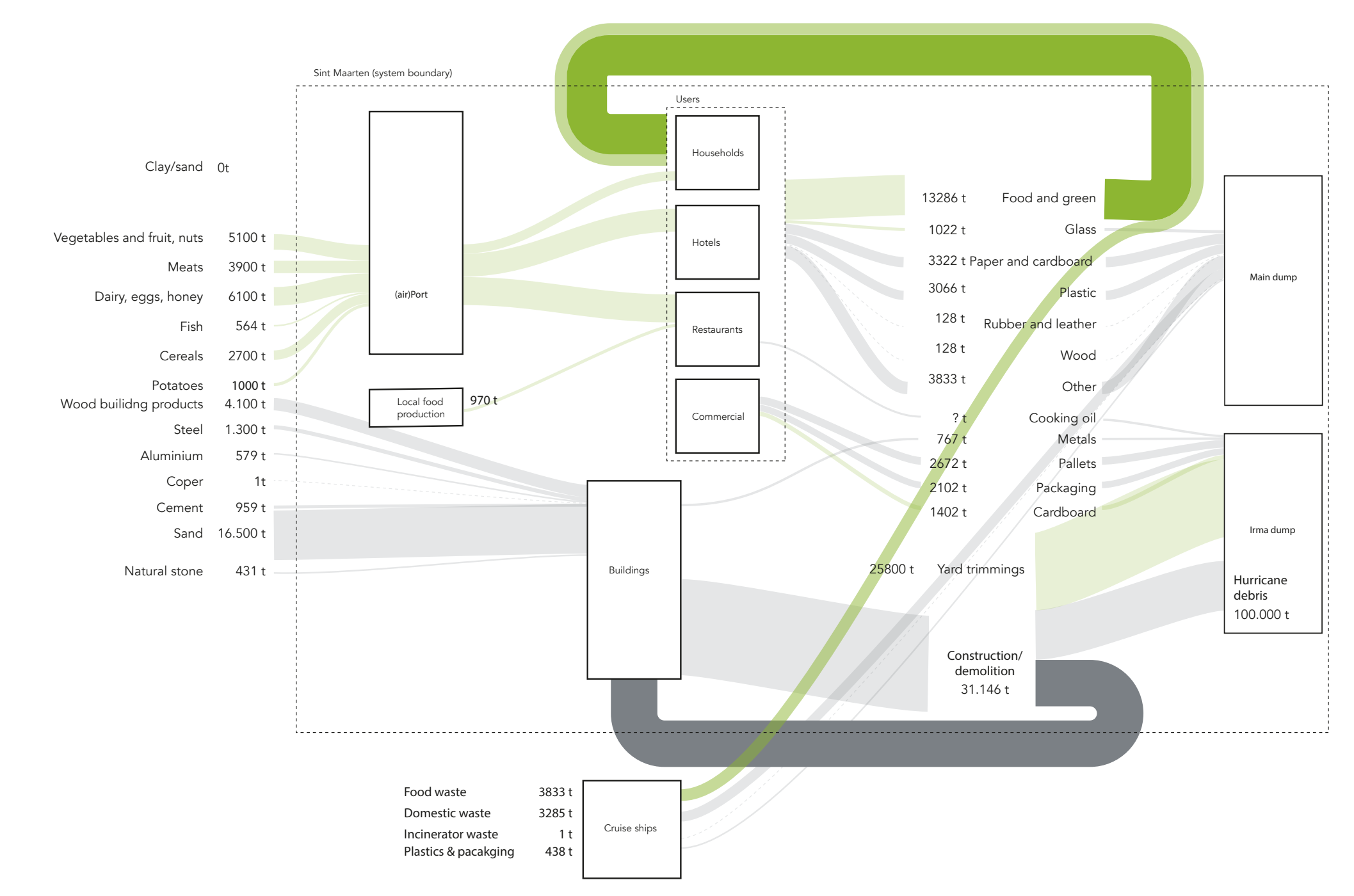
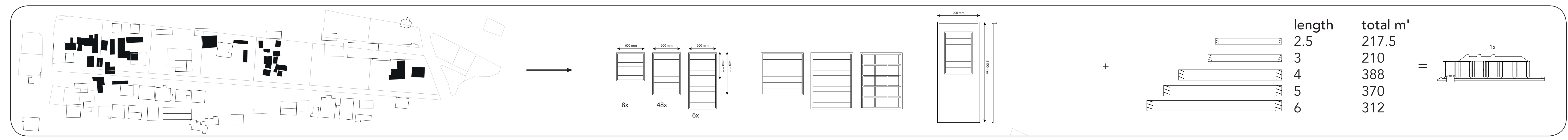
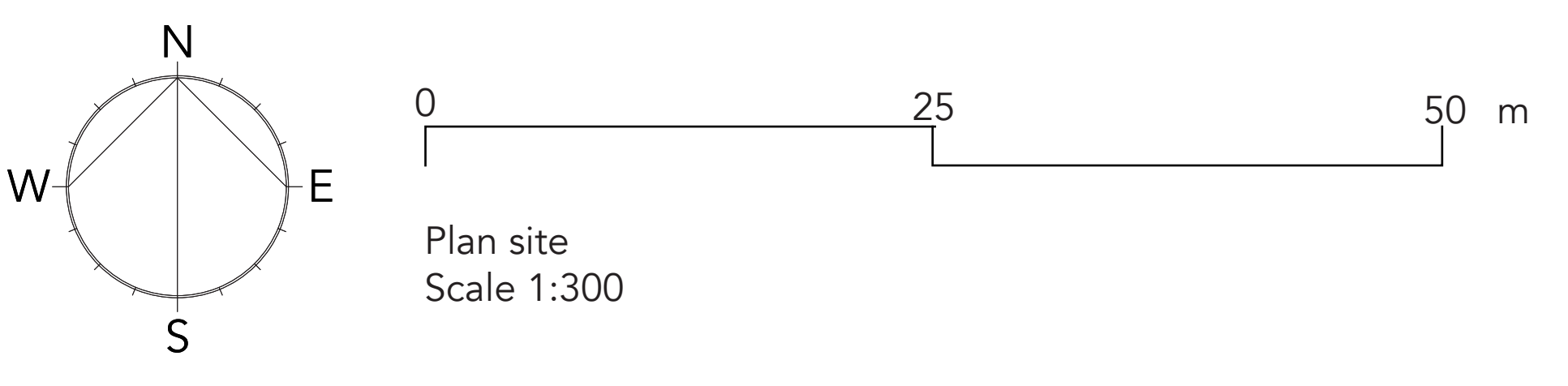
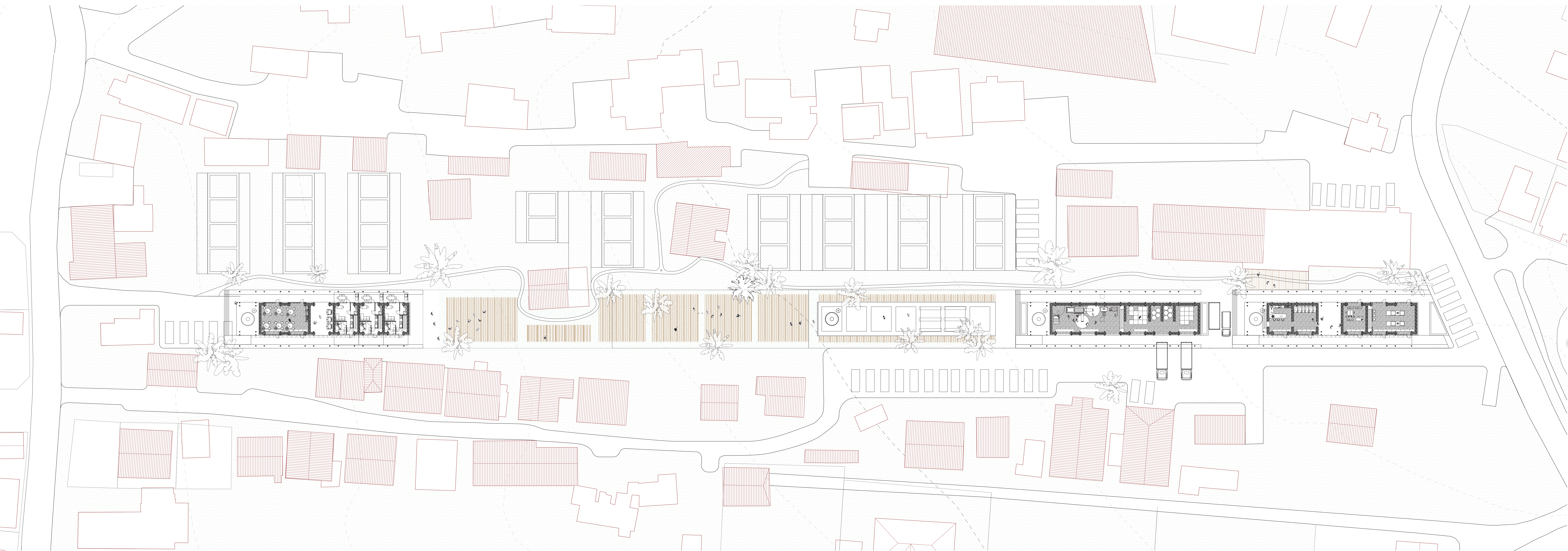
Phillipsburg and Suckergarden
Scale 1:5000



Sint Maarten



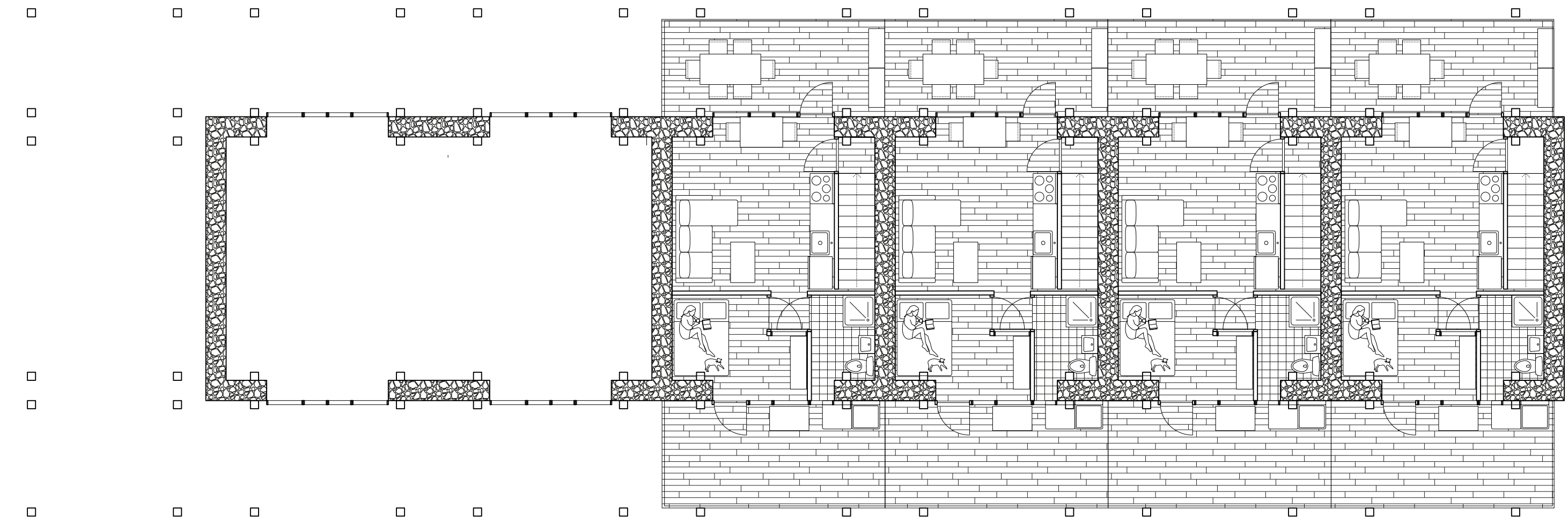
Material flow analysis: current situation



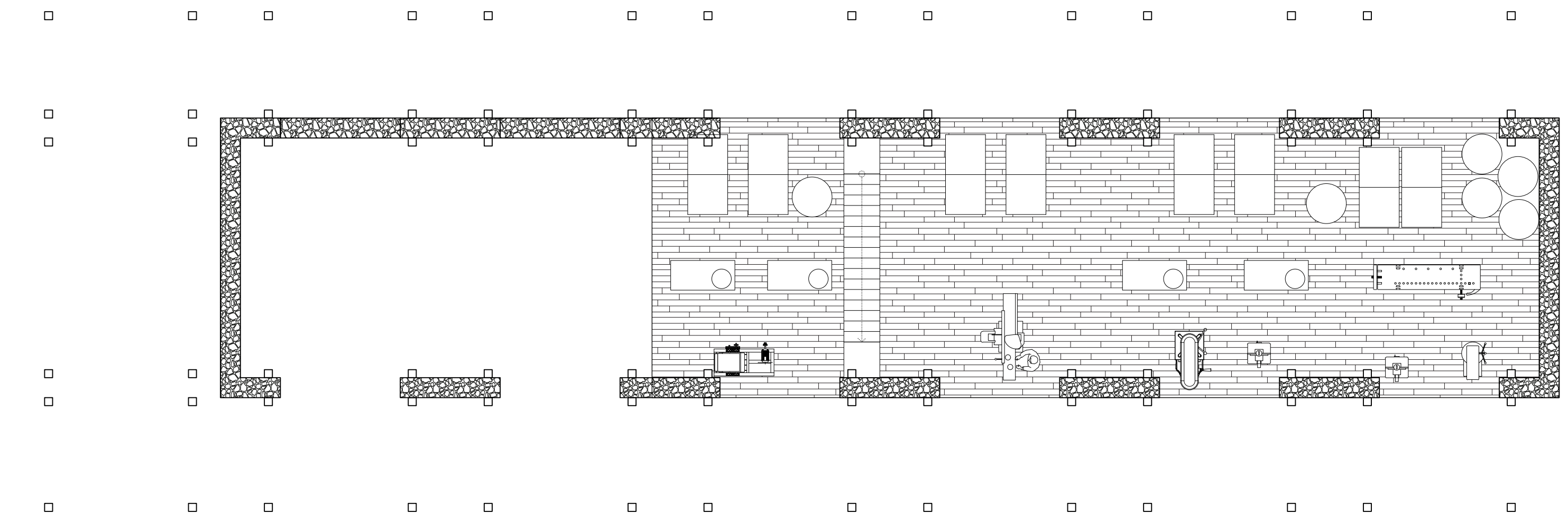
Material flow analysis: opportunities

Adressed flows projected on the site

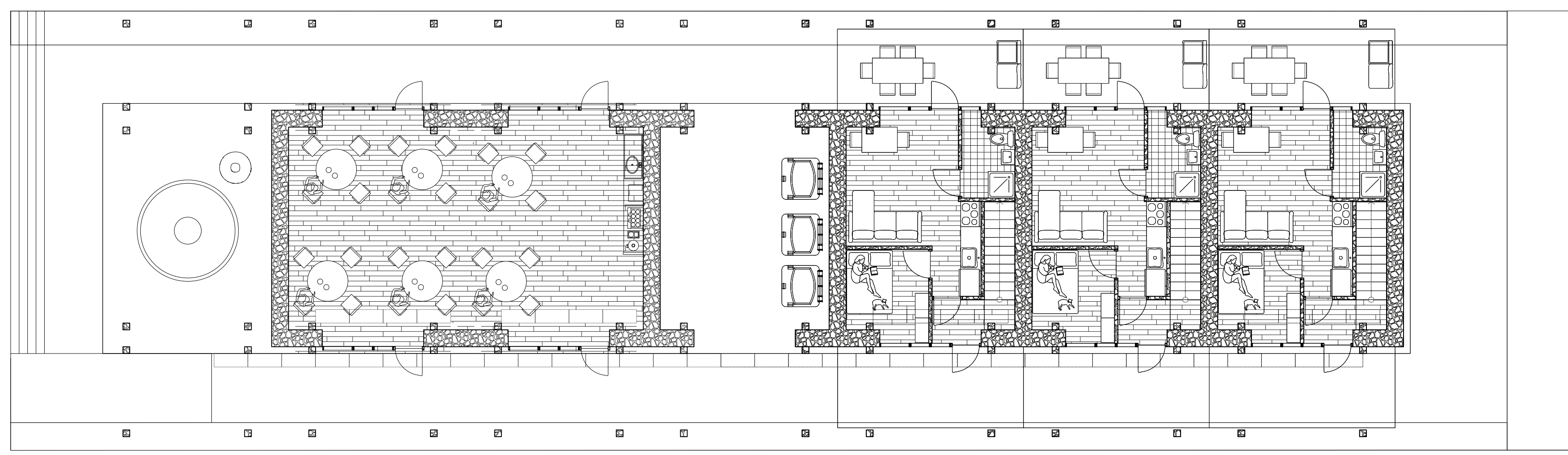
Material flow analysis: impact of the material hub



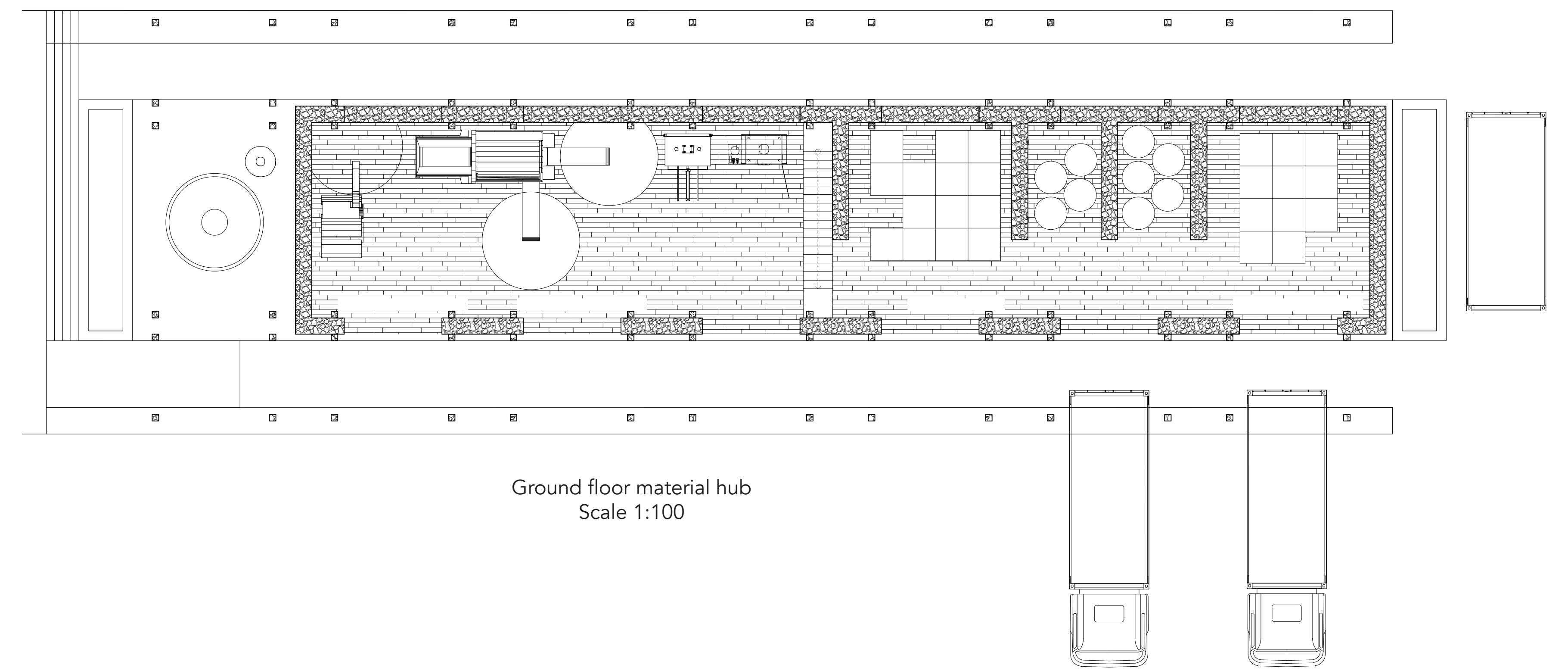
First floor housing and communal space
Scale 1:200



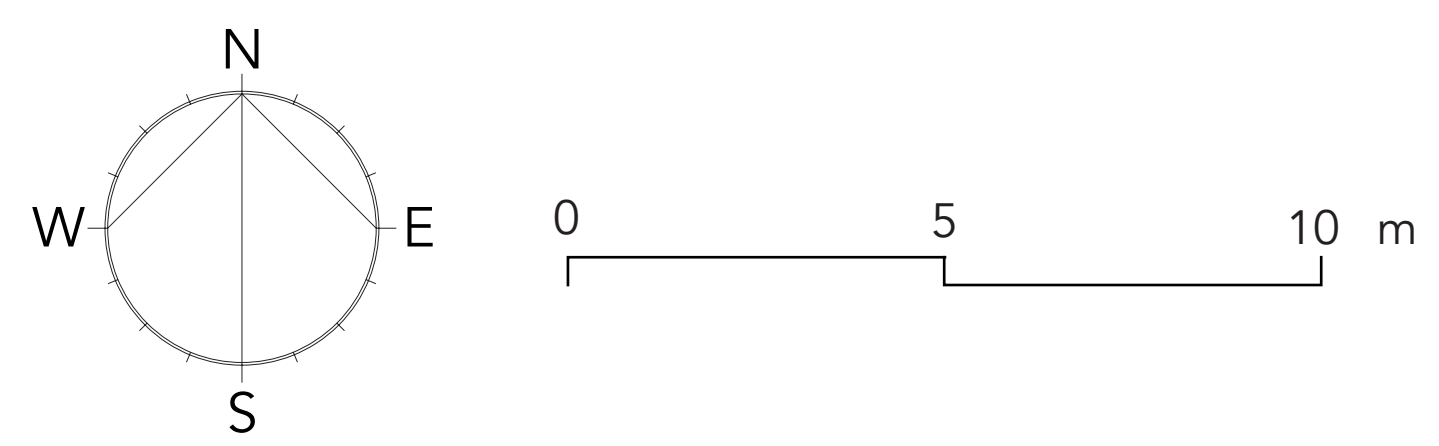
First floor material hub
Scale 1:100



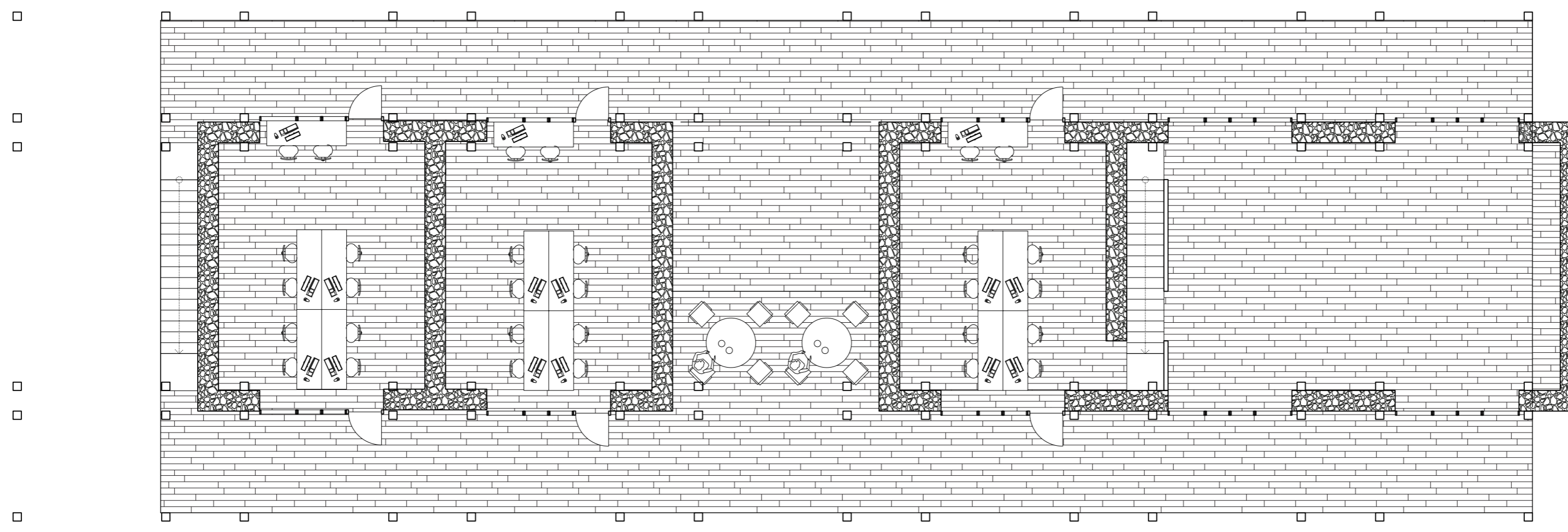
Ground floor housing and communal space
Scale 1:100



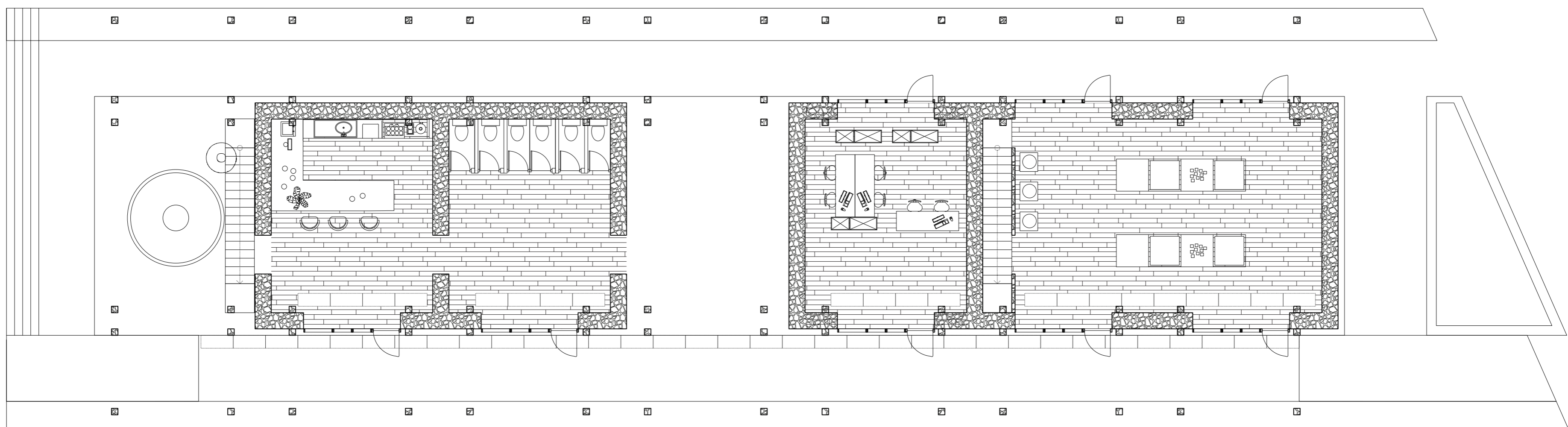
Ground floor material hub
Scale 1:100



Section site
Scale 1:300



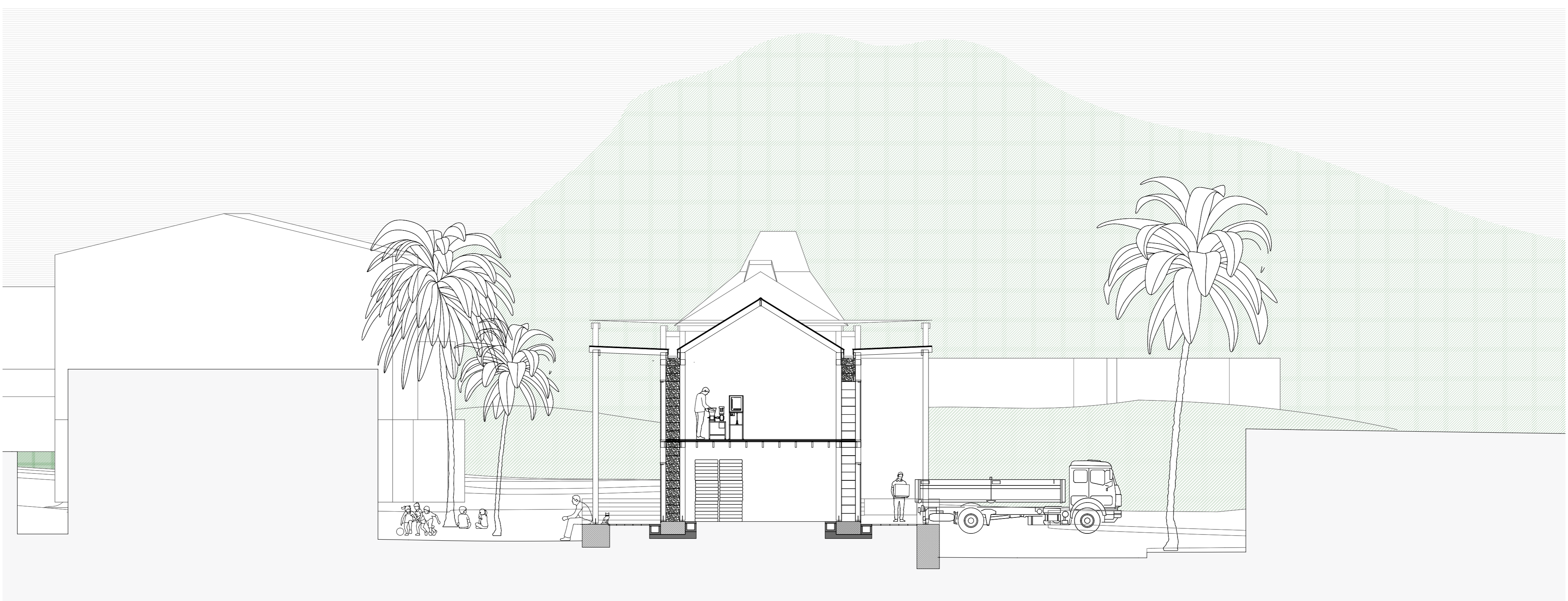
First floor commercial spaces
Scale 1:100



Groundfloor commercial spaces
Scale 1:100



Example facade: commercial spaces
Scale 1:100

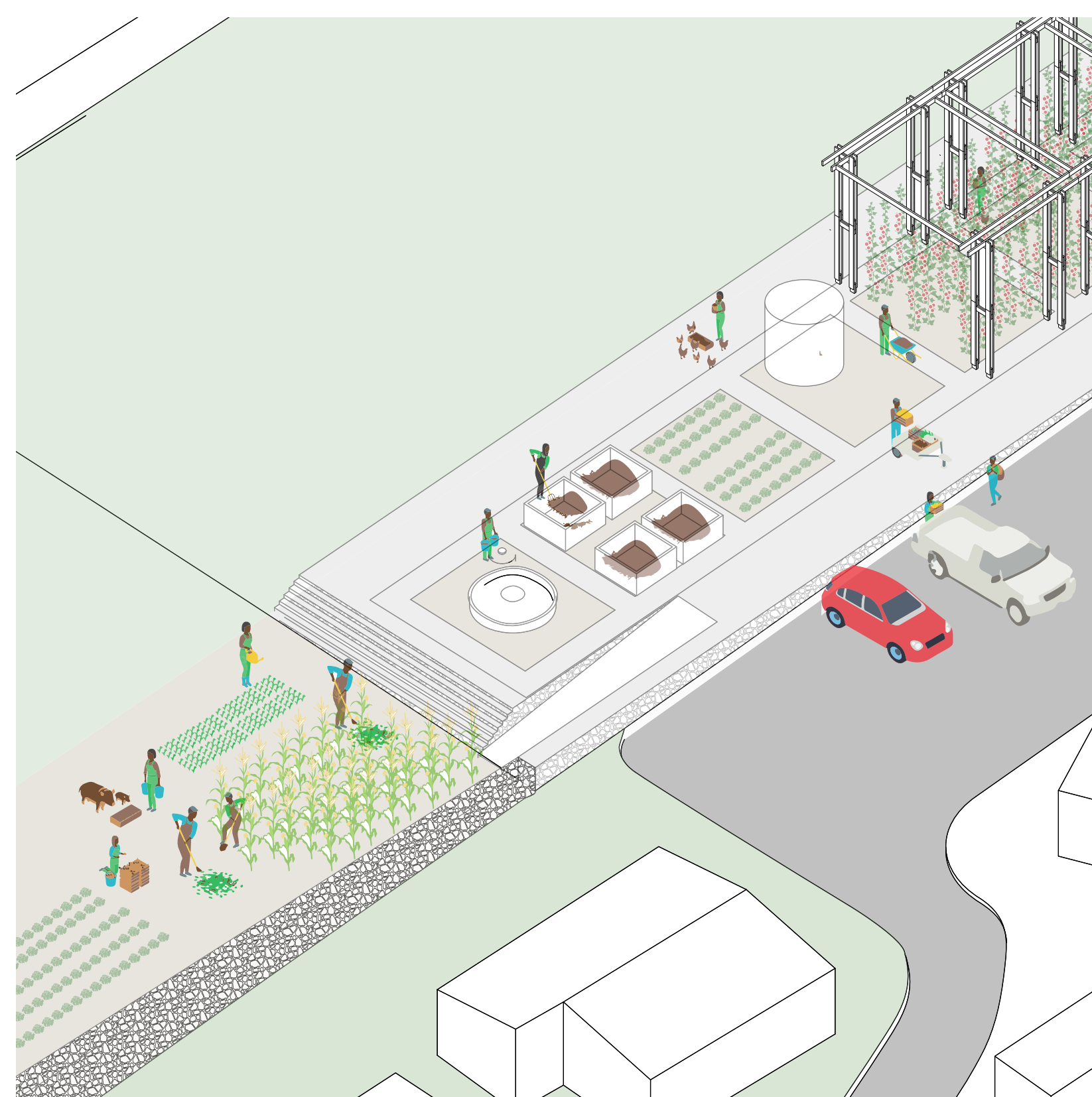
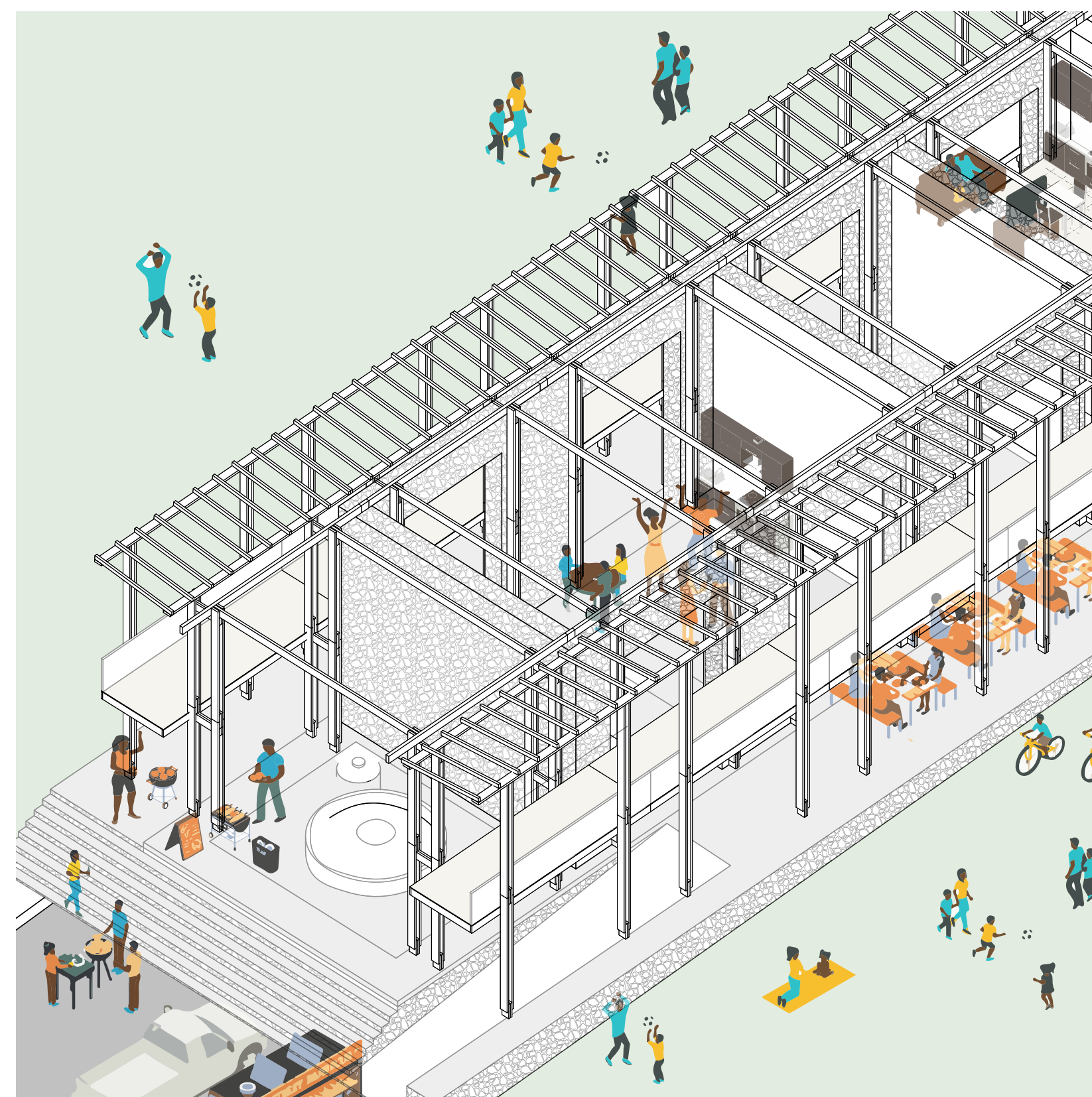


Short section material hub
Scale 1:100

Impression of rippling effect of pilot



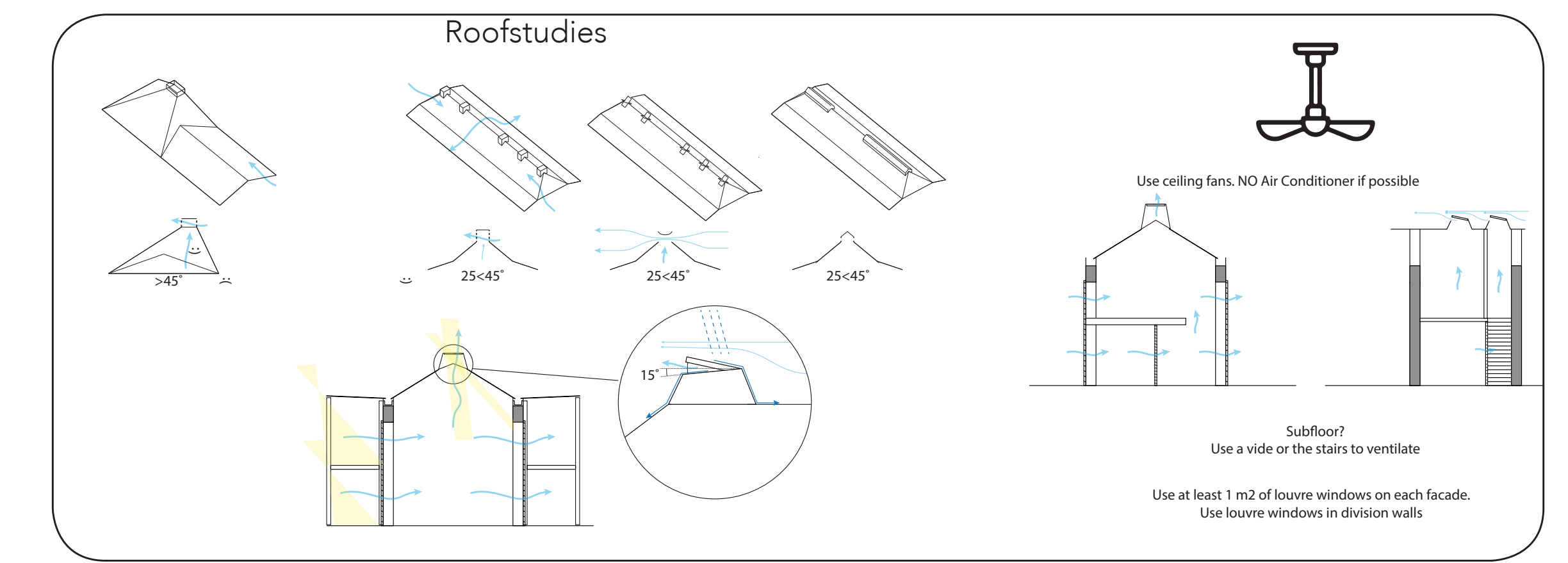
Urban performance pilot phase



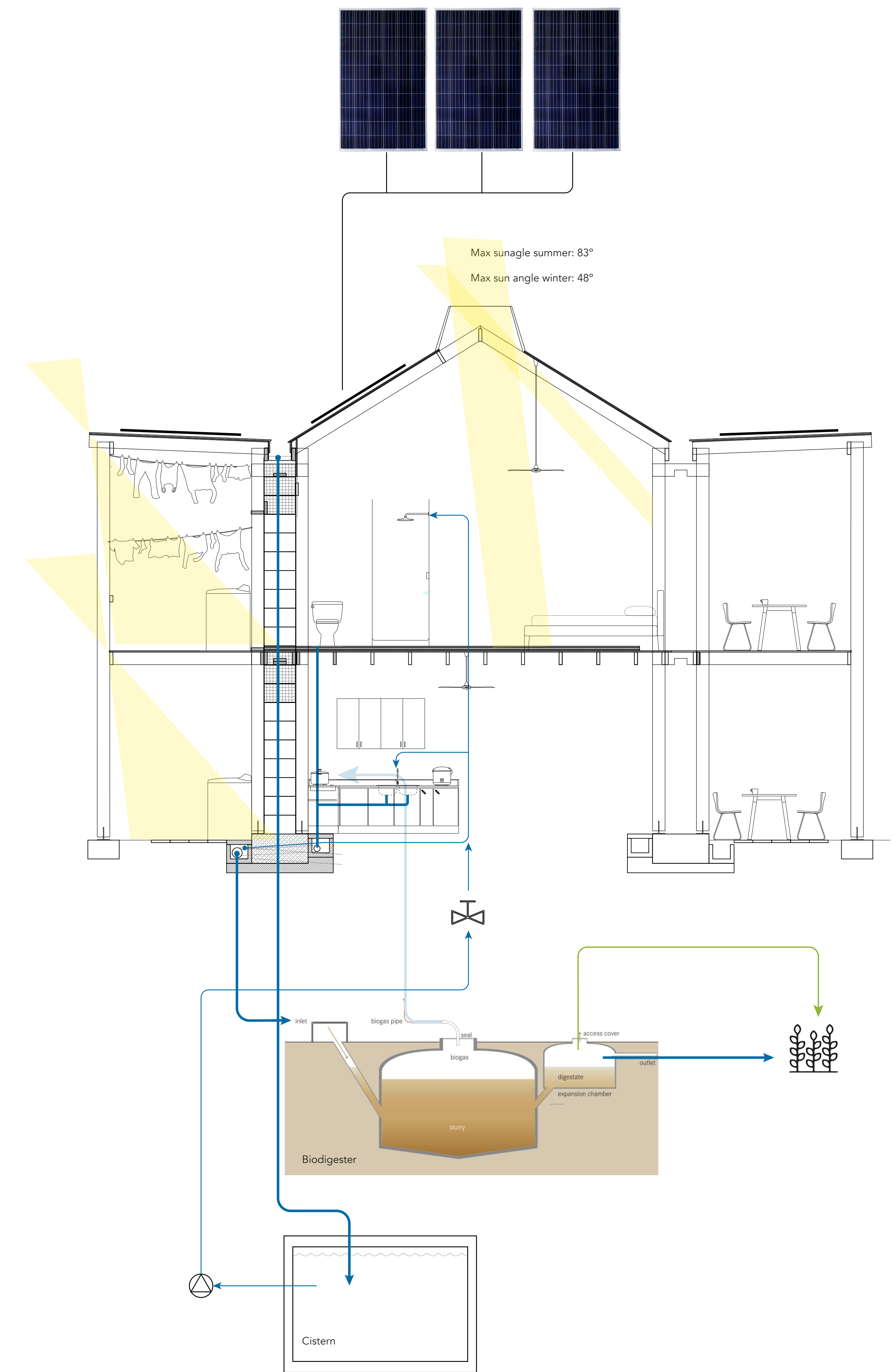
System performance with different functions



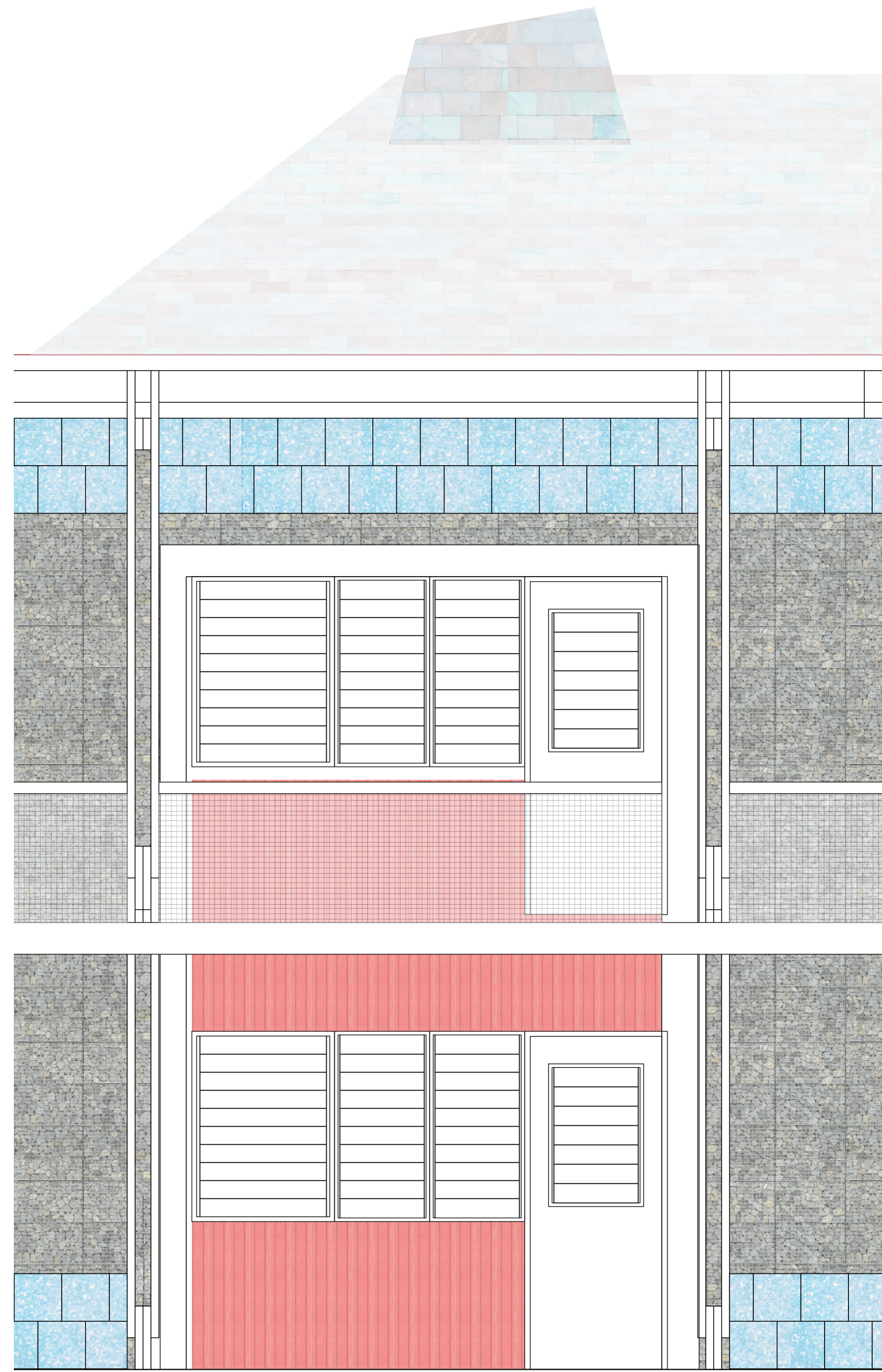
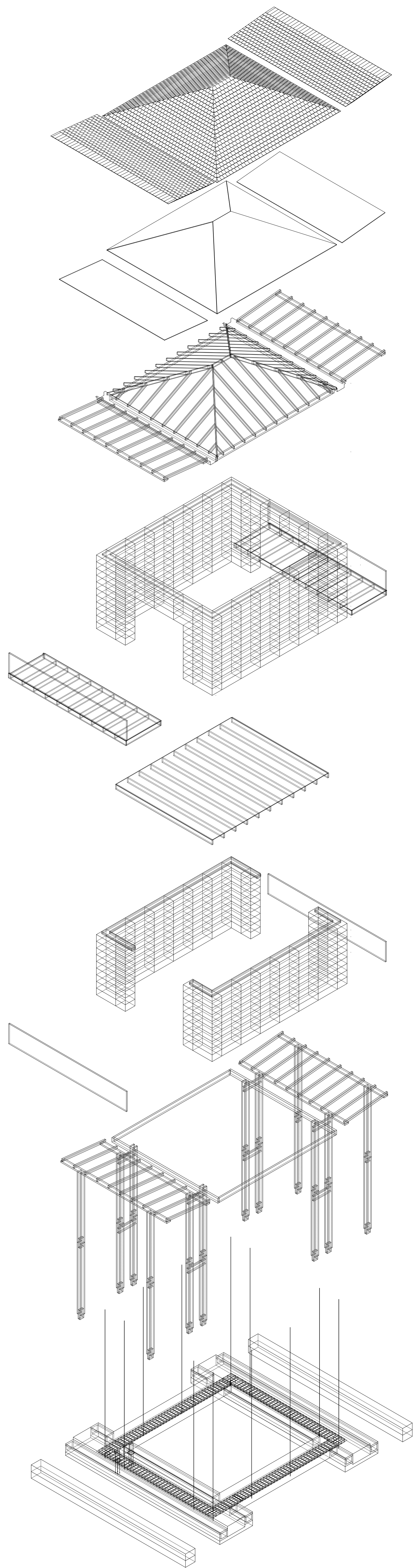
Ventilation



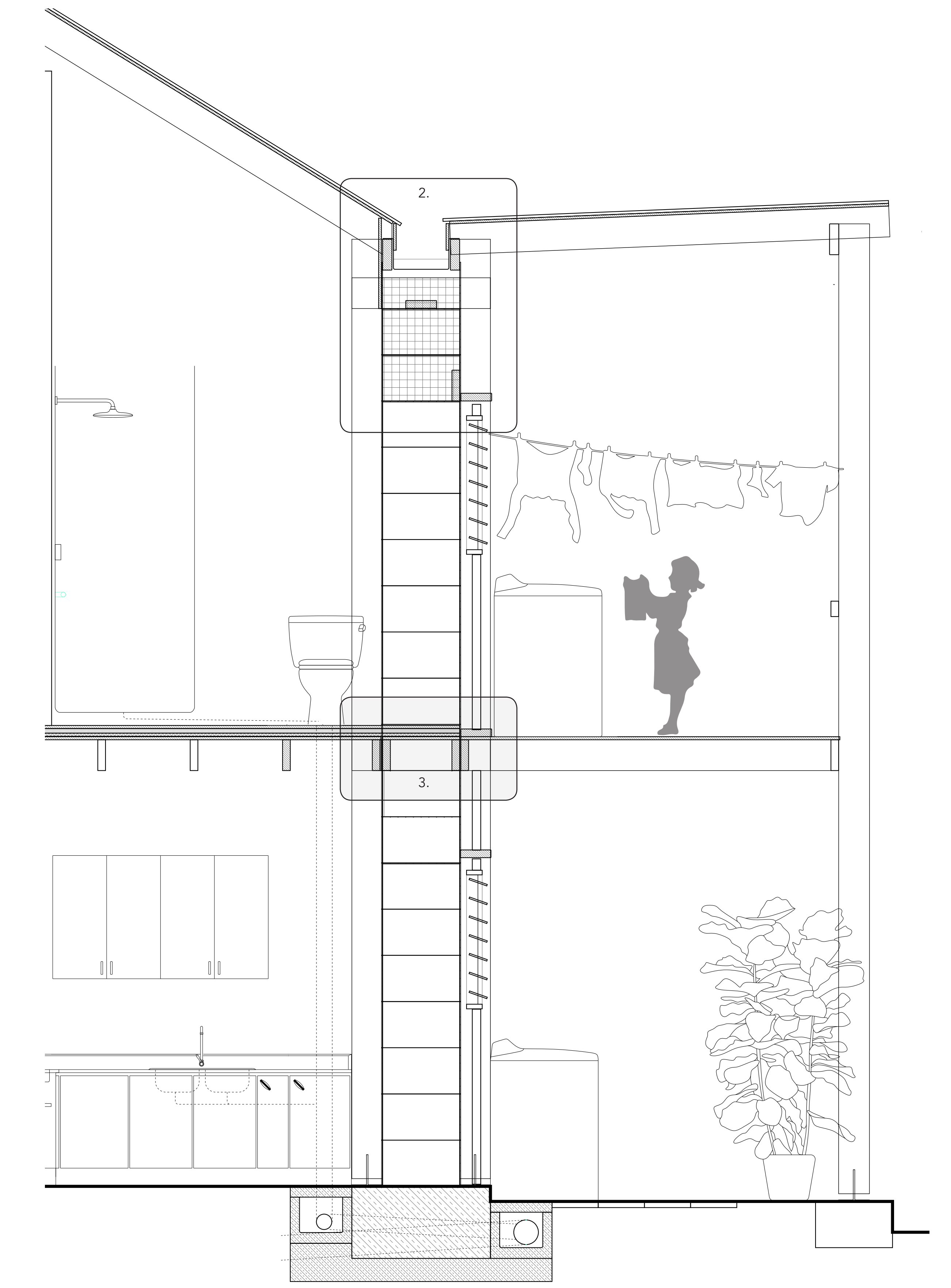
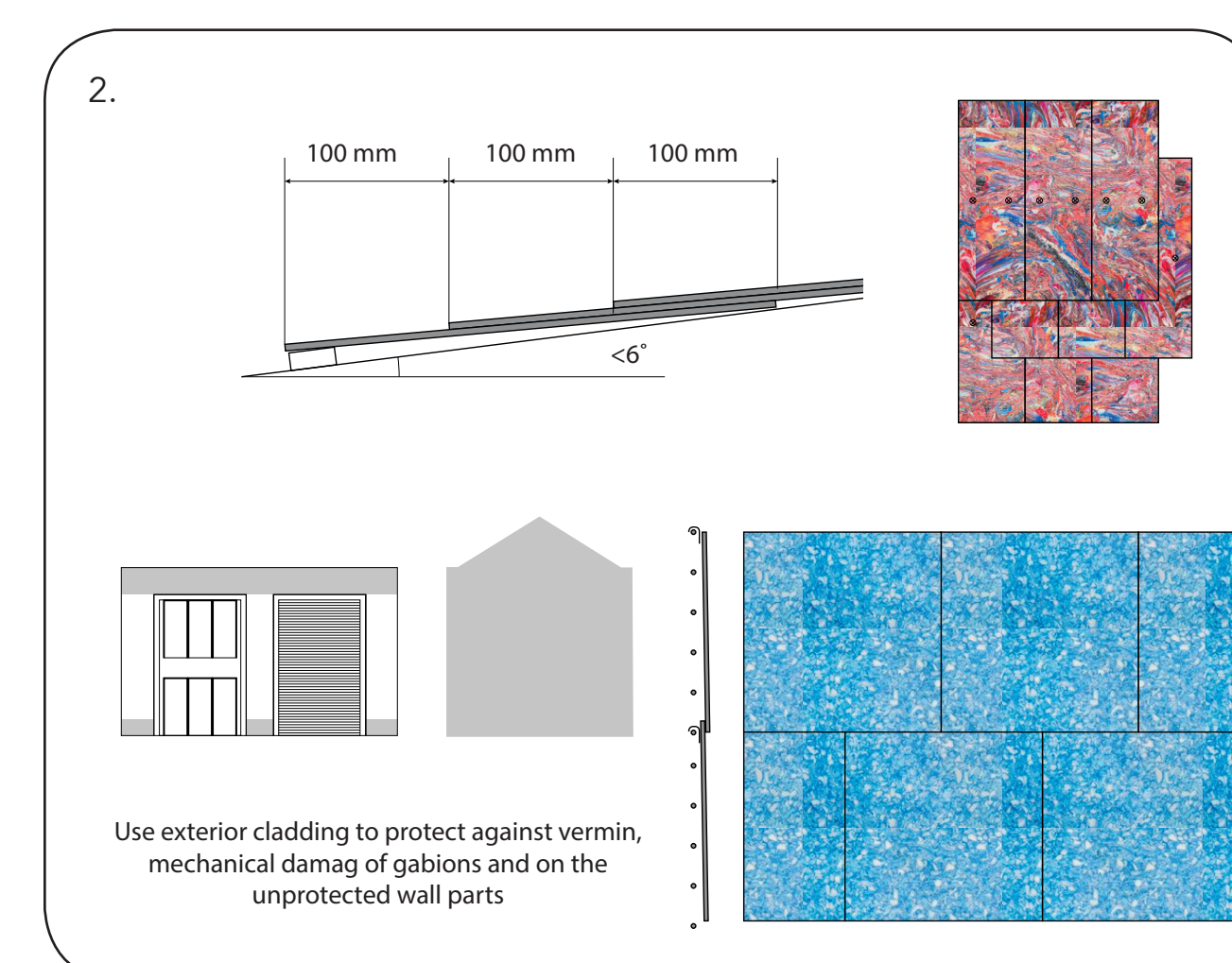
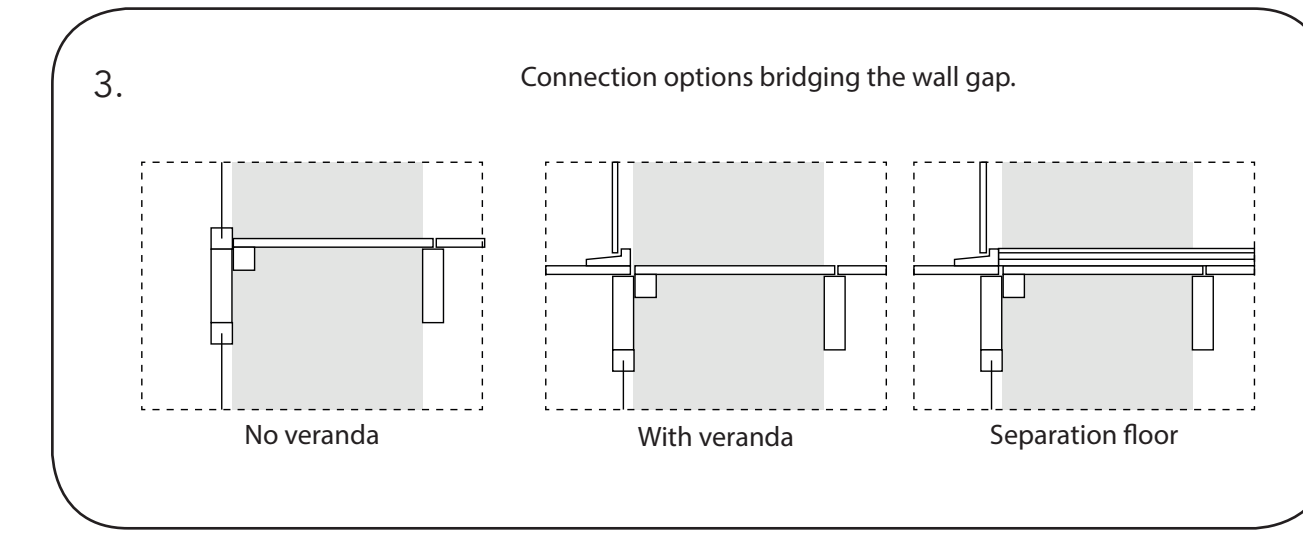
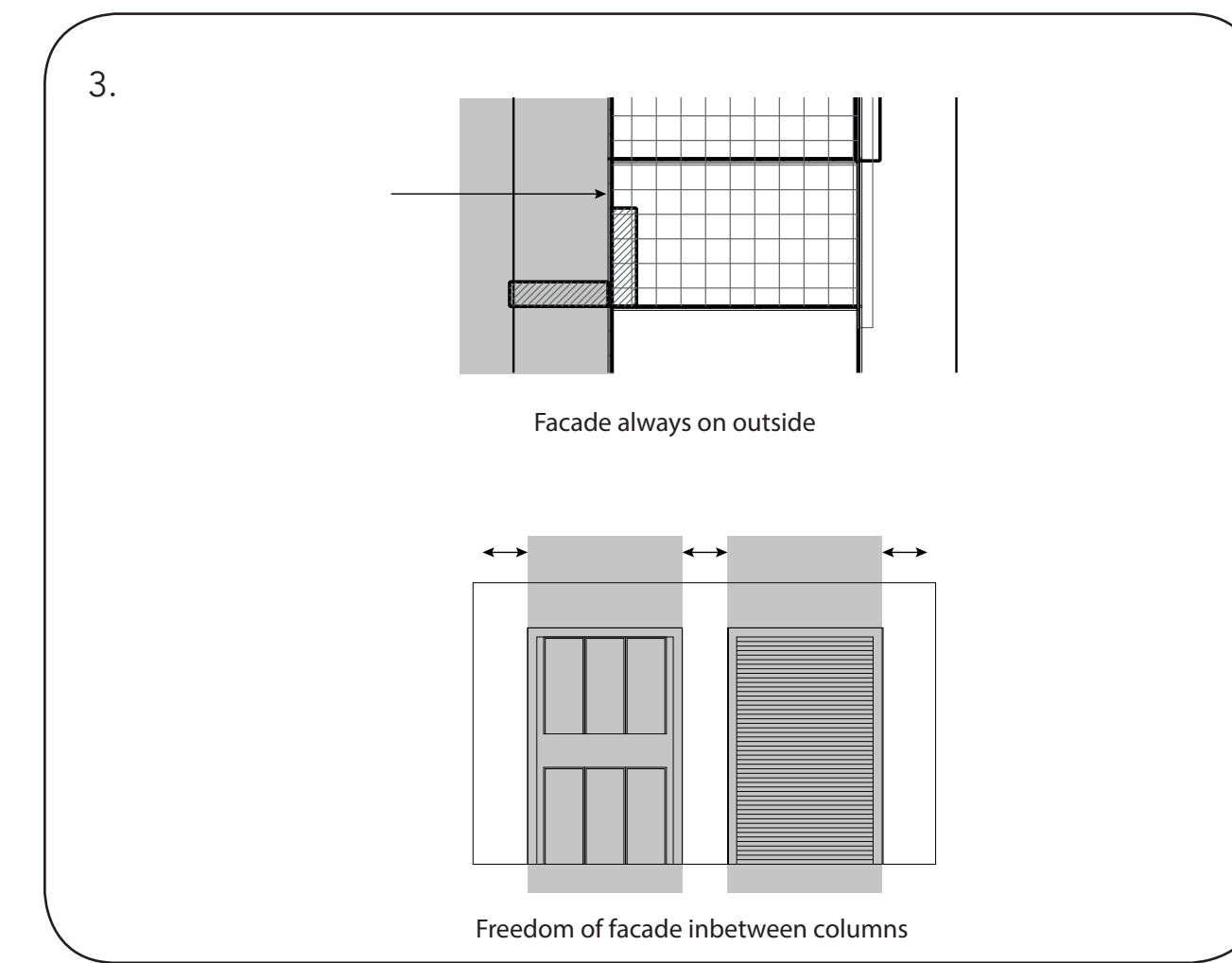
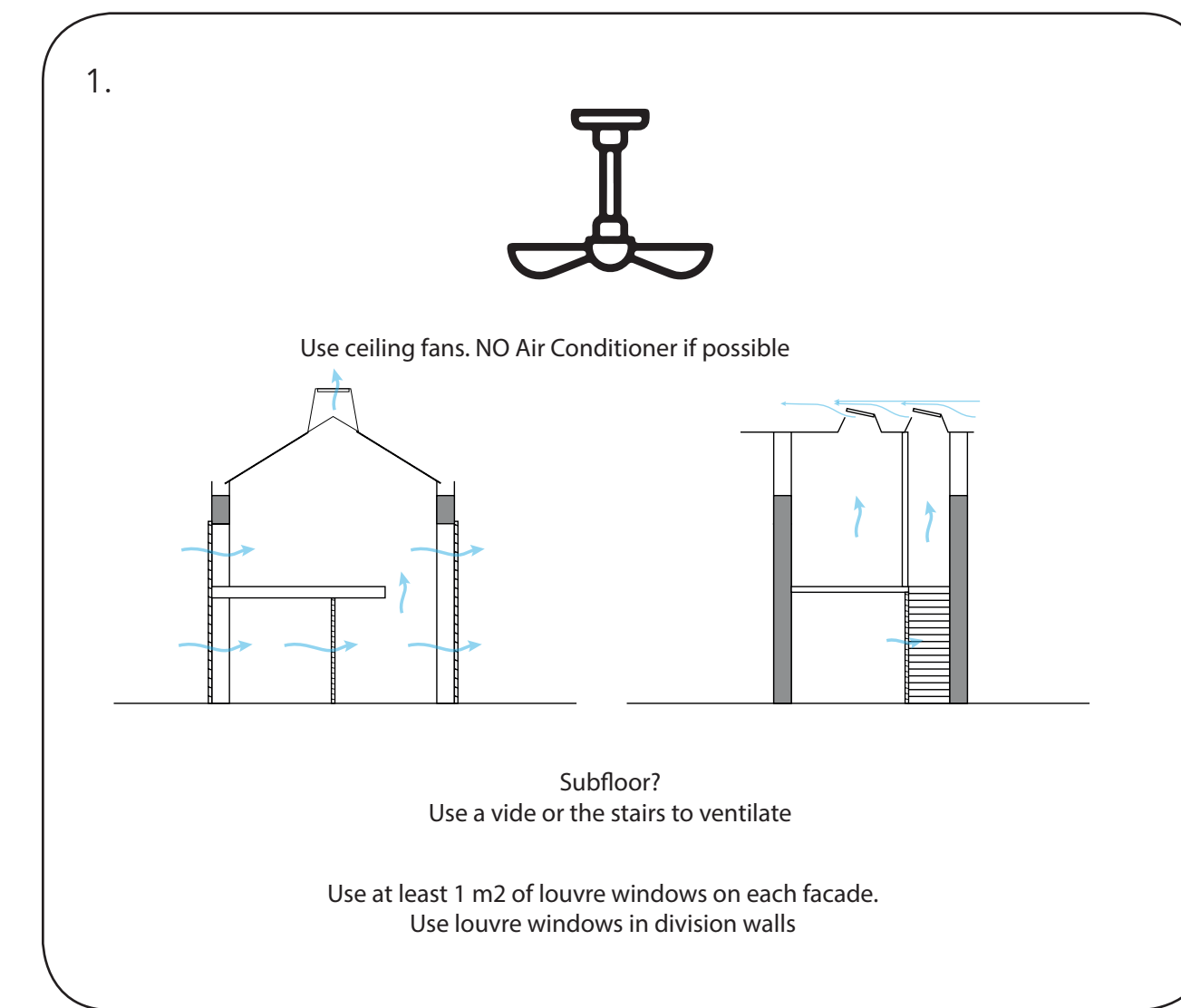
Climate system plug-ins



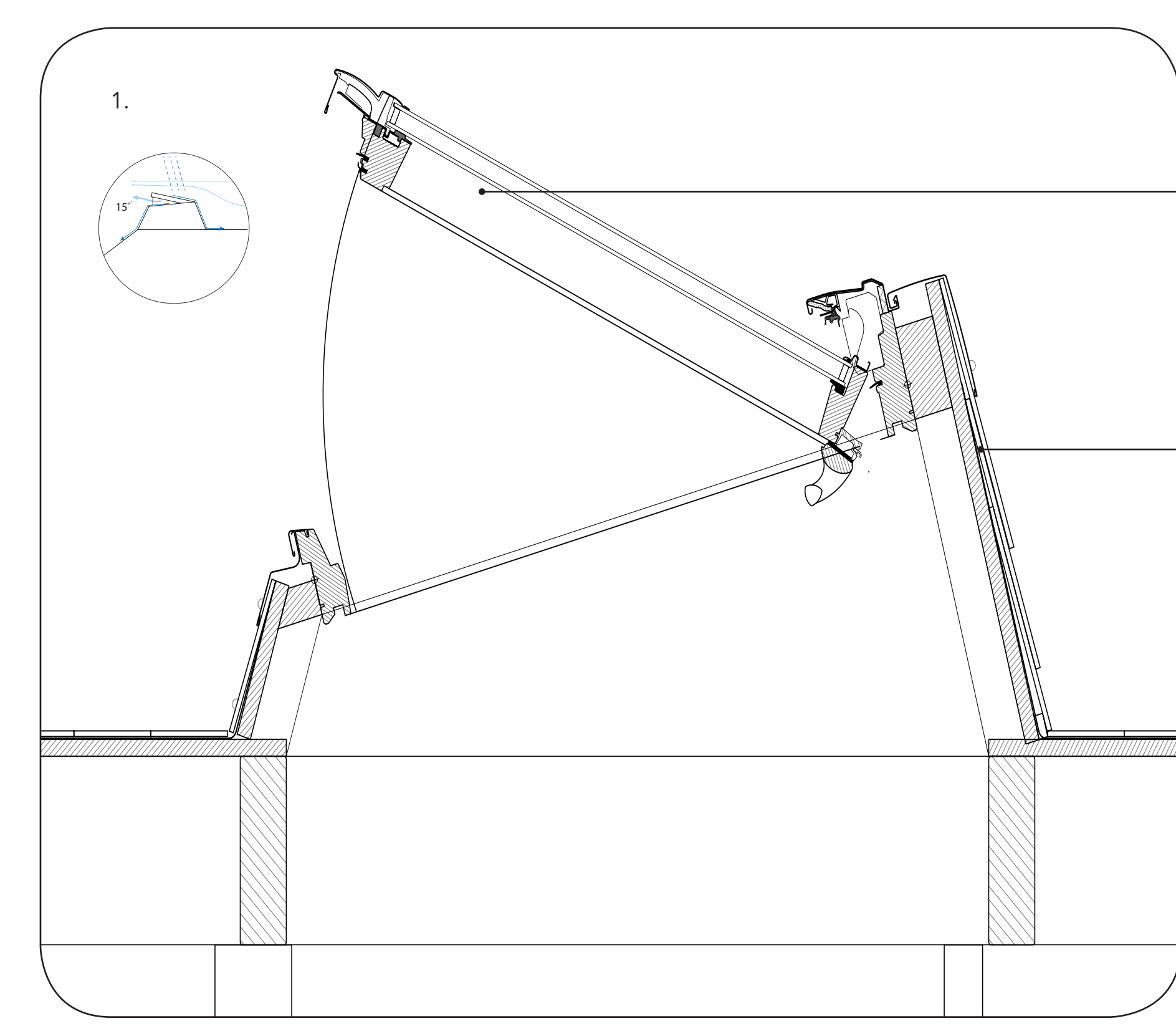
Building System



Facade section
Scale 1:20

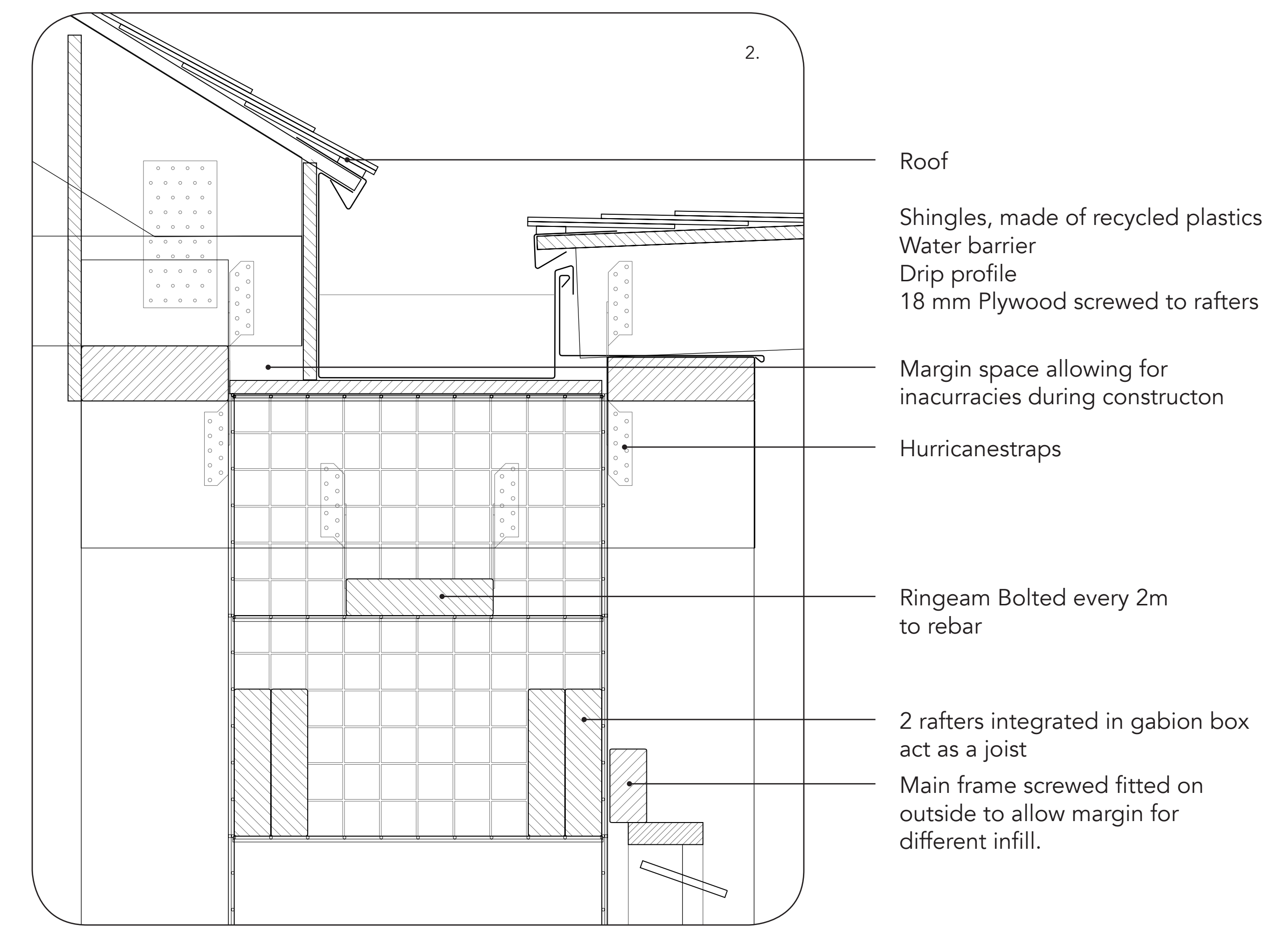


Section
Scale 1:20



- Openable skylight
Allows stack ventilation and increases ventilation through Venturi effect.
- Supporting structure
- Timer structure secured with hurricane straps
- Water barrier
- Shingles from recycled plastic
- Metal hurricane strip secured with screw, washer and nut

Detail top hatch
Scale 1:5



Detail roof
Scale 1:5