

An architectural rendering of a terraced housing complex. The buildings are multi-story, constructed from light-colored brick or concrete, and feature a stepped, terraced design. They are arranged around a central courtyard area. The courtyard is landscaped with green lawns, numerous trees, and low concrete walls. Several small figures of people are visible in the courtyard, suggesting a communal living environment. The sky is overcast with soft, grey clouds.

TERRACED LIVING

AR3AD100 Advanced Housing Design Graduation Studio

P5 presentation

Atacan Batbay, 5296773

Delft University of Technology

Tutors: Elina Karanastasi, Harald Mooij & Robbert Guis

Introduction

- The tension between public space and the verticalization of the city.



VS



- Vertical living = less social interaction.
- Lack of liveliness in interior spaces (corridors, entrances).
- Need for redesign of public functions within buildings.

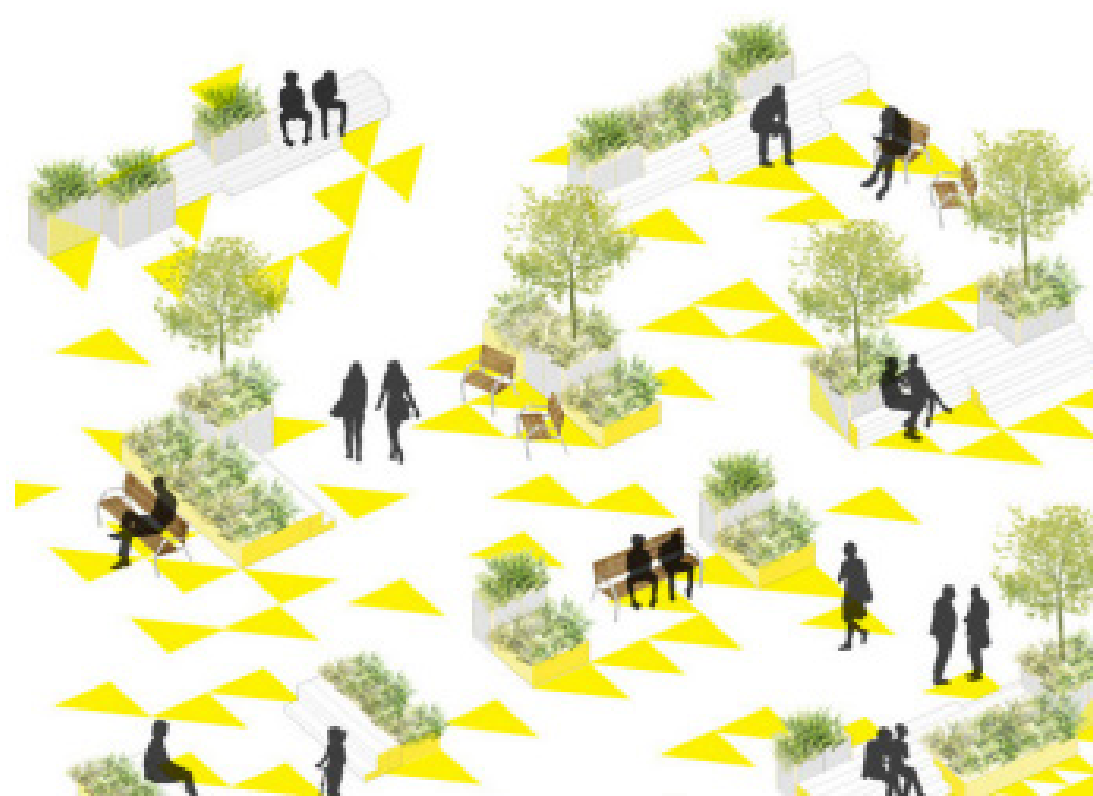
Lack of social interaction in city blocks

What strategies can be employed to integrate (semi-)public functions in a housing complex that encourage social interaction, while maintaining the privacy and well-being of the residents?

Elements



- Seating



- Proximity



- Transparency



- Activity (food stalls, art, etc.)

Design principles of vibrancy

Informal meeting spaces

Flexible use

Clustering

Visibility

Recognizable functions

Shared routes

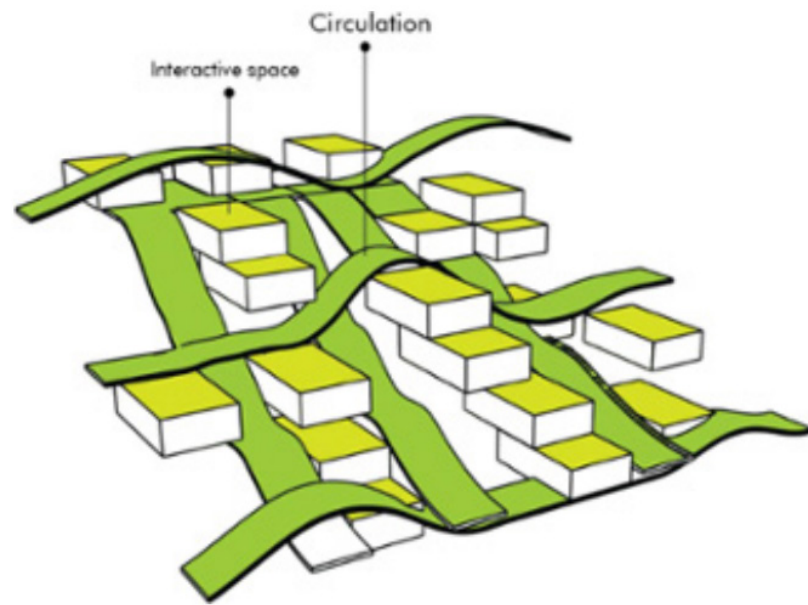
Resident involvement

Optimizing the internal space of a residential complex:

- Shared corridors as streets
- Small enclosed spaces, such as courtyards encourage social interaction

4 STRATEGIES

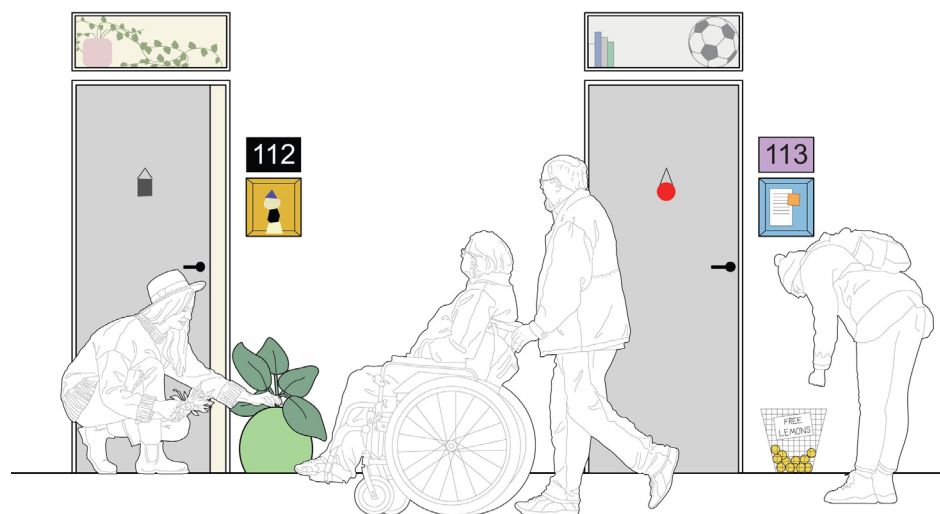
- Integrate semi-public functions in circulation areas
- Avoid absolute public spaces as this leads to anonymity and less use of the space by residents



- Design for spontaneous encounters, not forced ones
- Opportunity to 'escape' from social interaction



- Encourage personalization of shared space



- Make transition zones inviting (seating, light, view)



CASE STUDY - Windsong Cohousing

Communal spaces are only accessible to residents.

The sense of community is central, so there is little privacy among residents.

Residents are positioned on the central atriums.



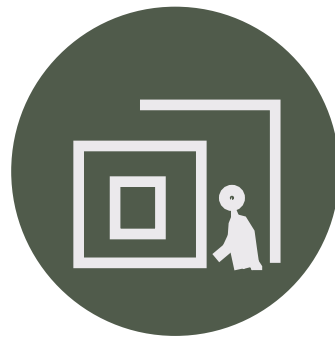
CASE STUDY - VRIJBURCHT, Amsterdam

Communal spaces, such as squares, gardens, and terraces act as meeting places and invite residents to social interaction.

Theater and restaurant are publicly accessible.

The complex includes communal spaces, such as studios and meeting rooms





Soft transition zones



Seating and stay
quality



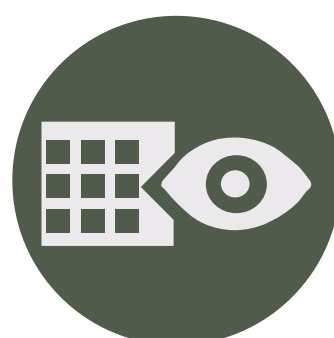
Proximity and
clustering



Clear zoning



Sightlines and
Transparency



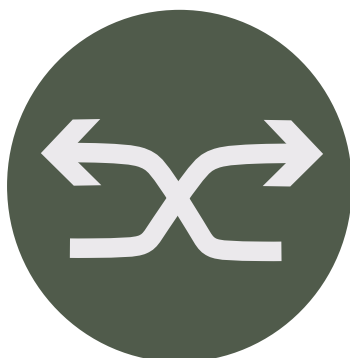
Visibility and
surveillance



Active plinth



Connection
neighborhood



Limited shared
routes



Sustainable and
low-maintenance design



Human scale
and materialisation



Flexibility



Social activities



Sense of
ownership



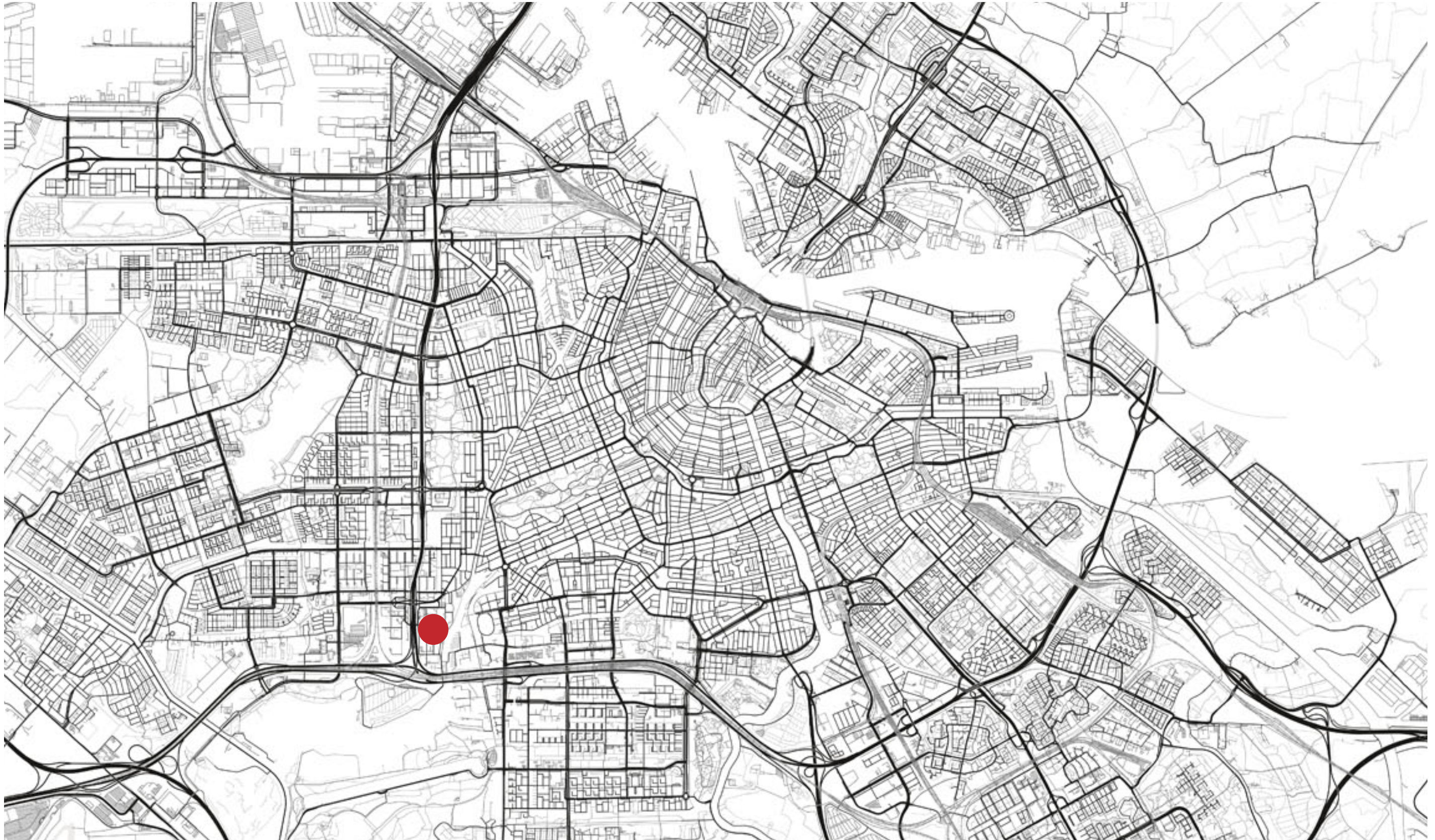
Creating accessible
meeting spaces



Communal spaces
for residents

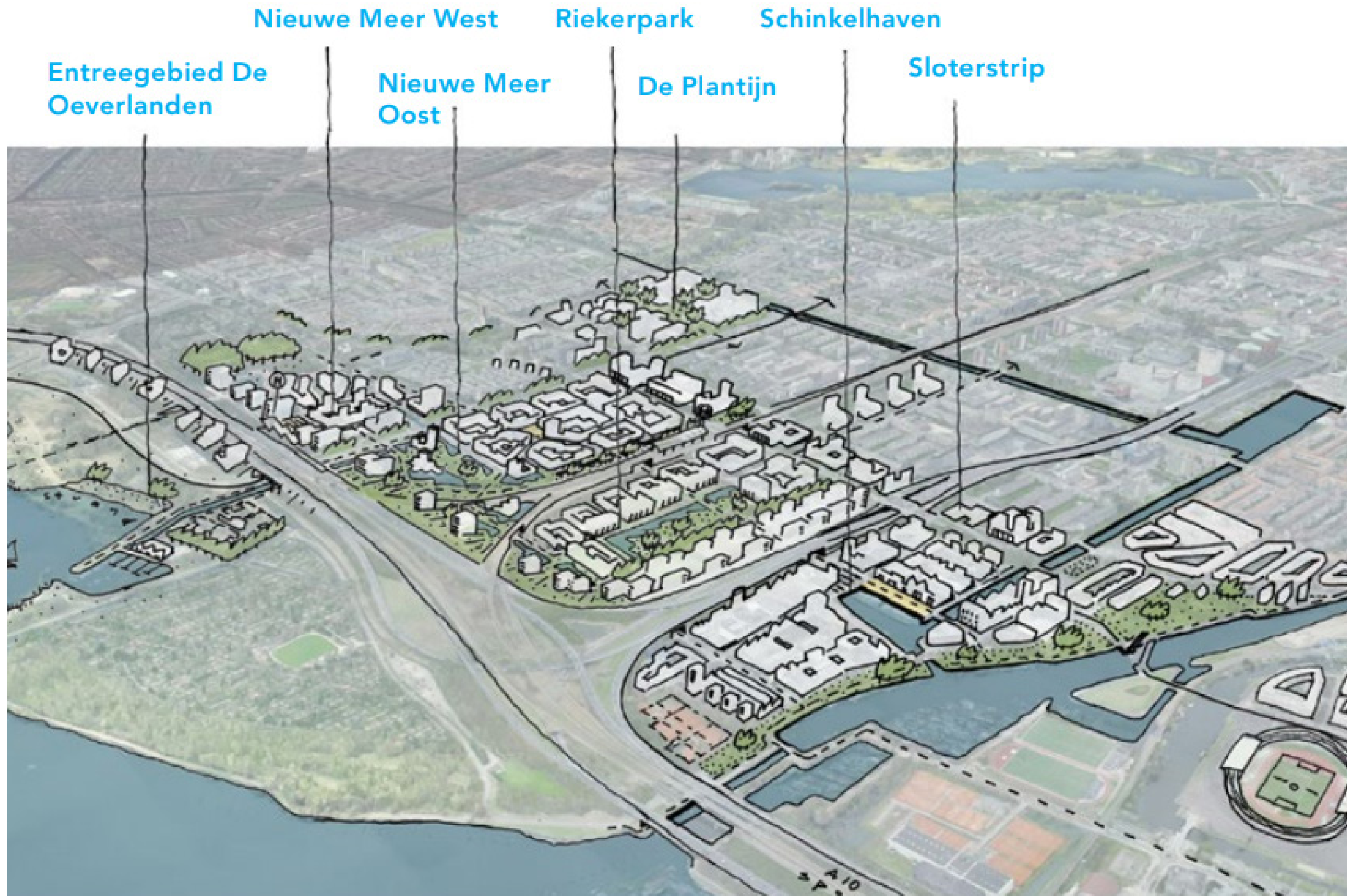
LOCATION

Atacan Batbay
5296773

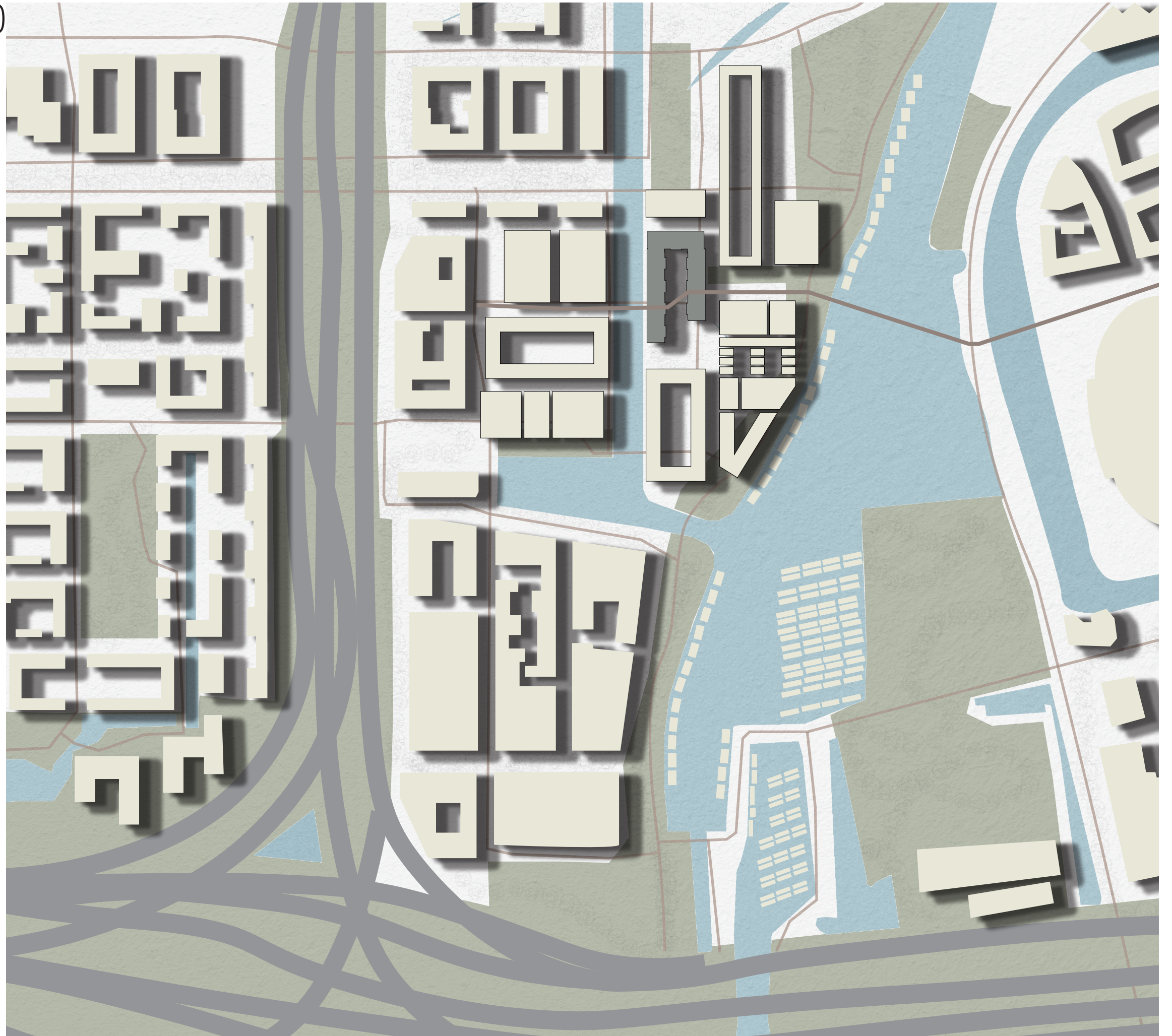


SCHINKELKWARTIER

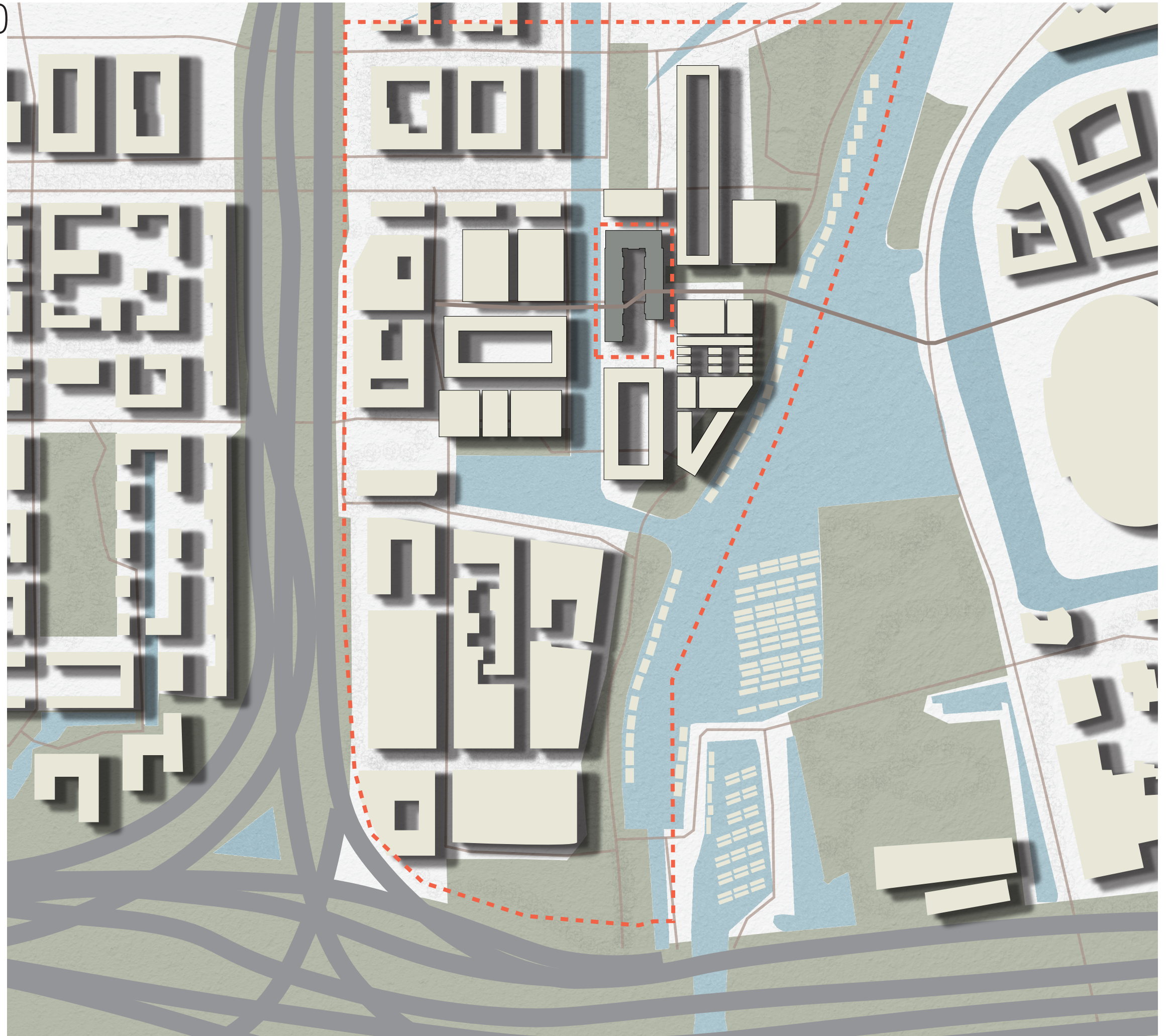
Atacan Batbay
5296773



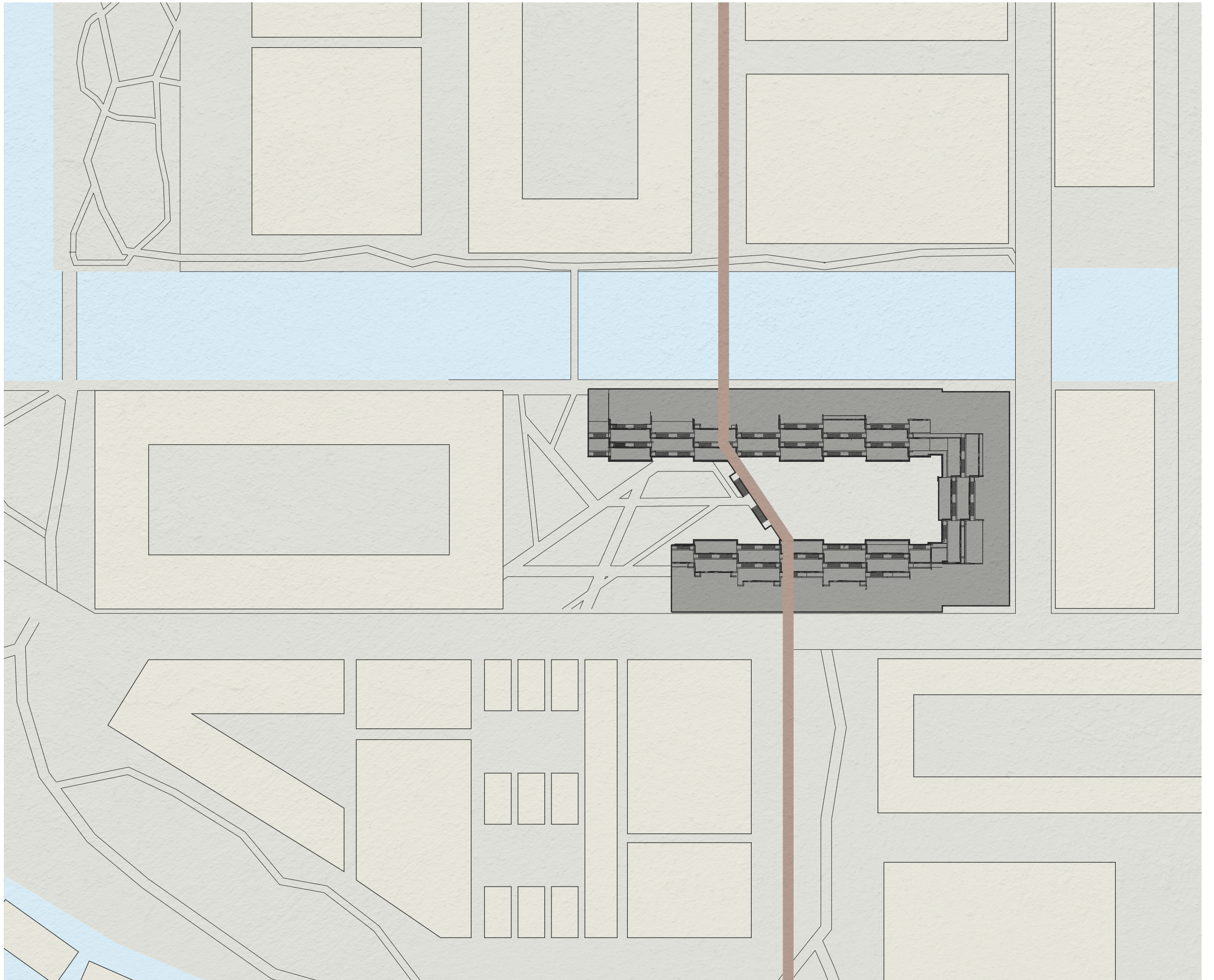
Masterplan 1:5000



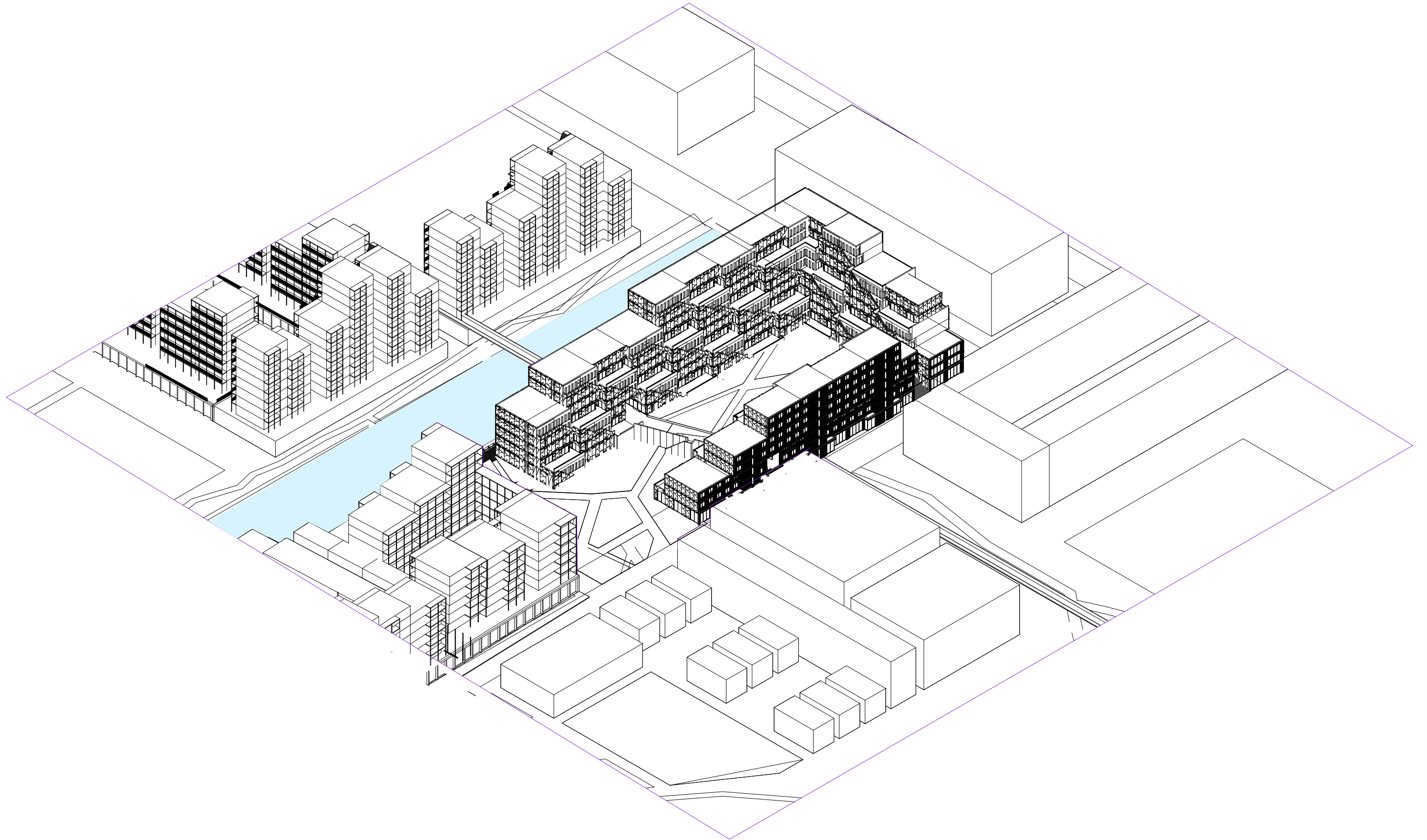
Masterplan 1:5000



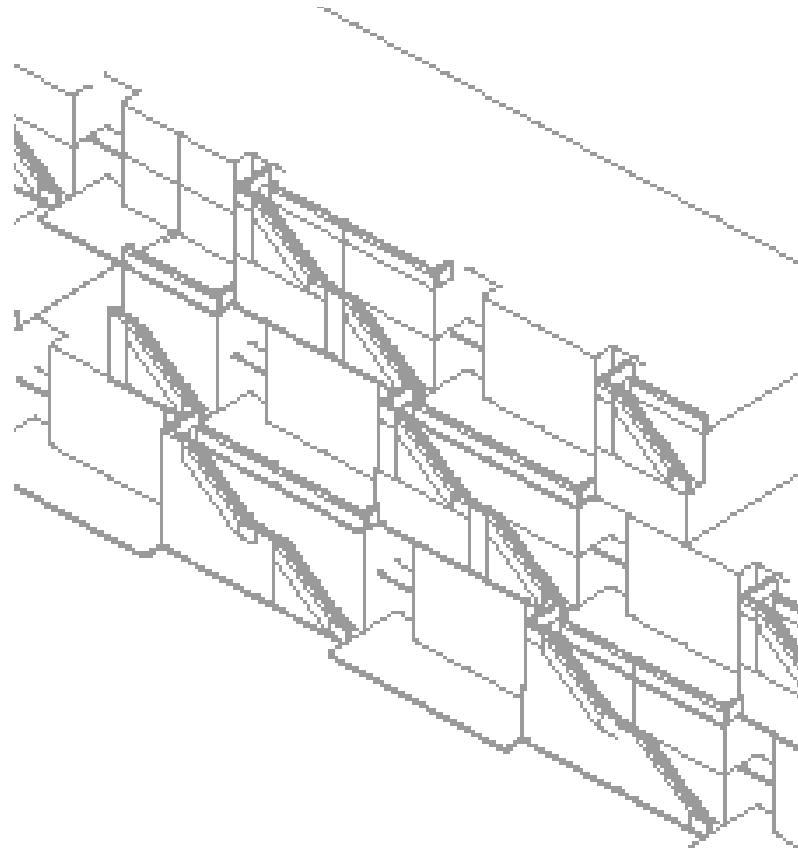
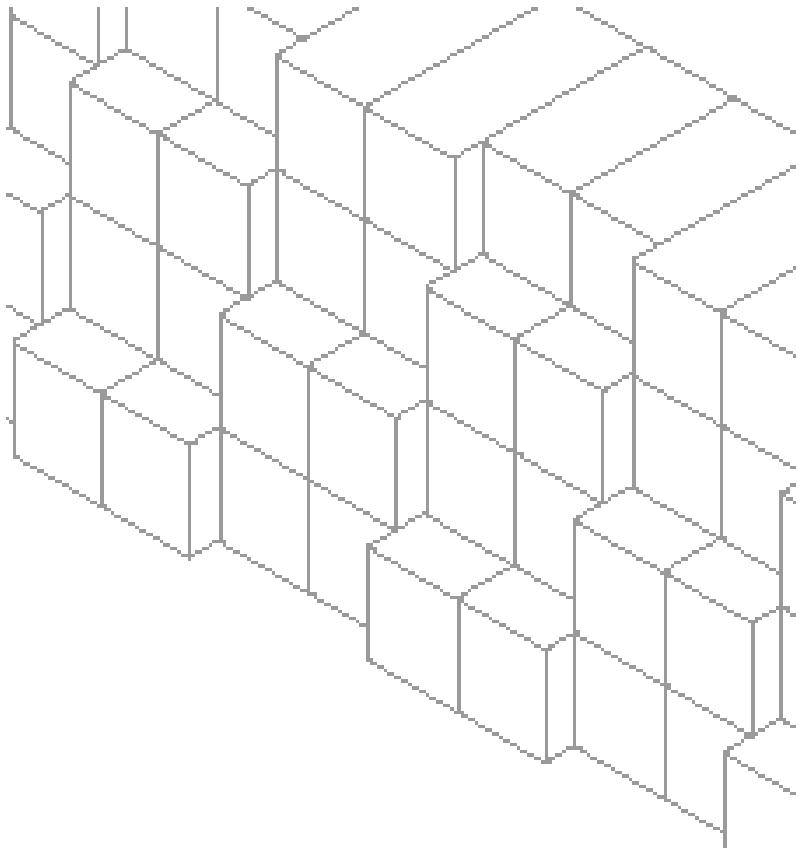
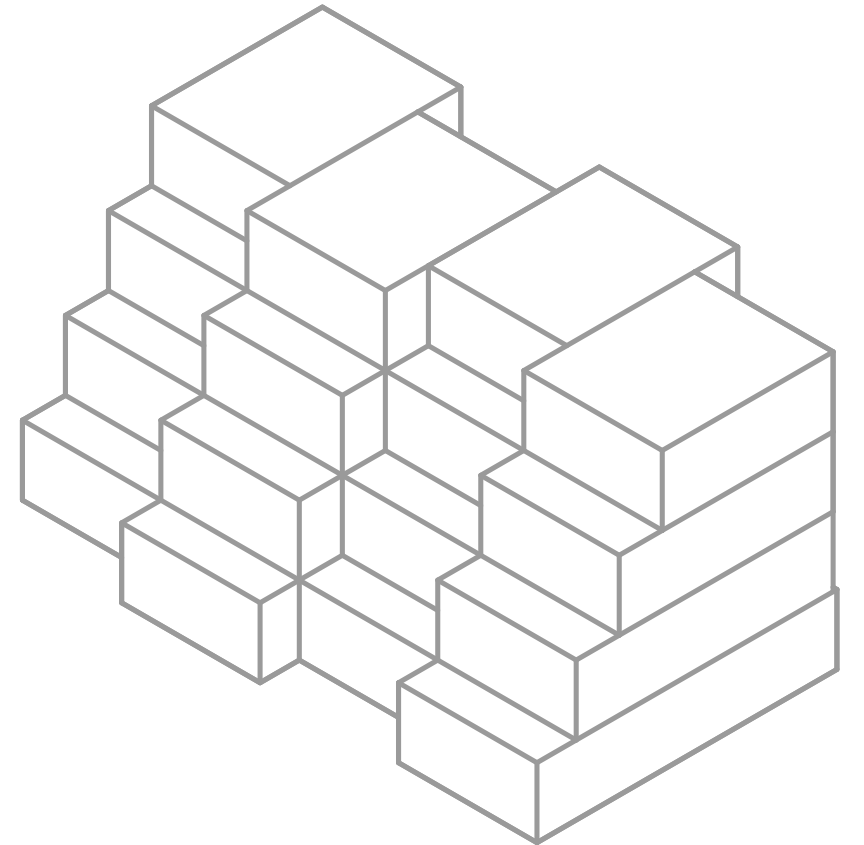
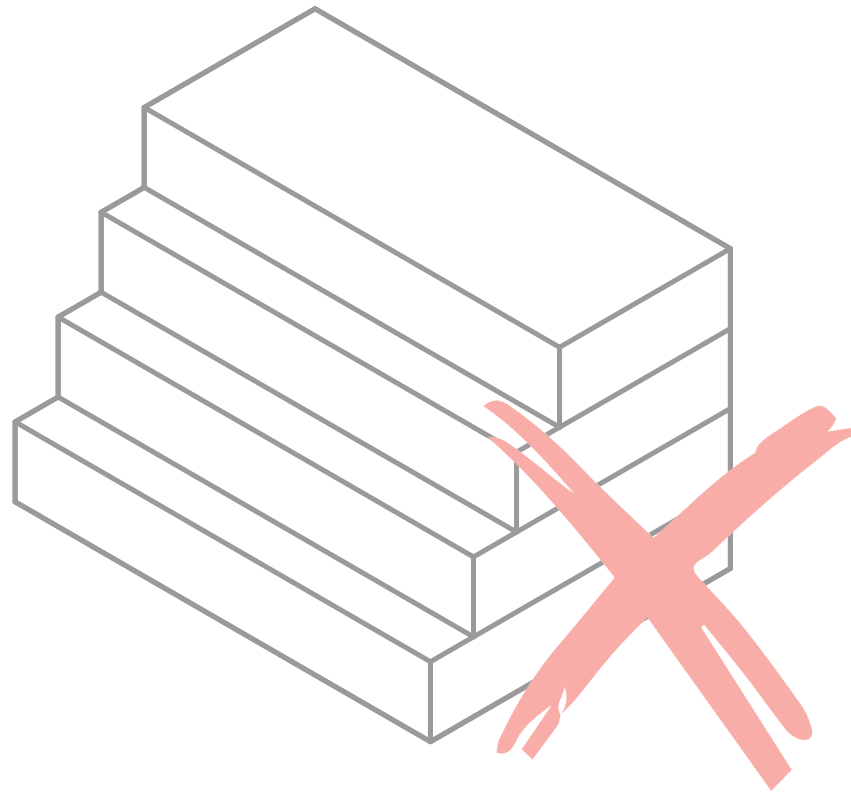
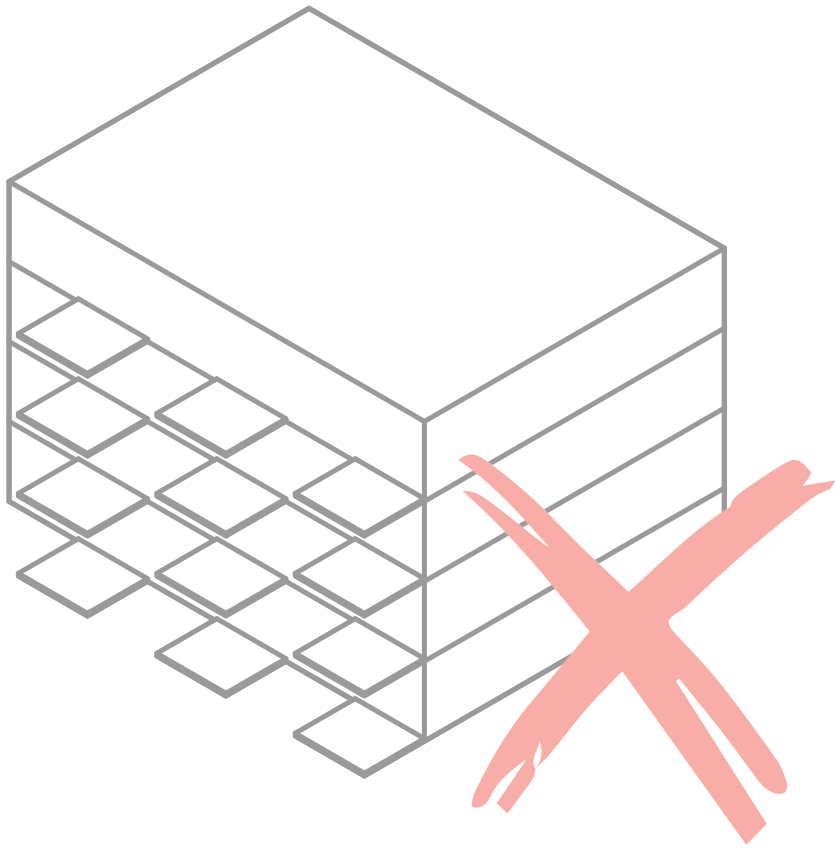
Masterplan 1:1000



Situation



Process to shared terraces



Inspiration for staggered terraces

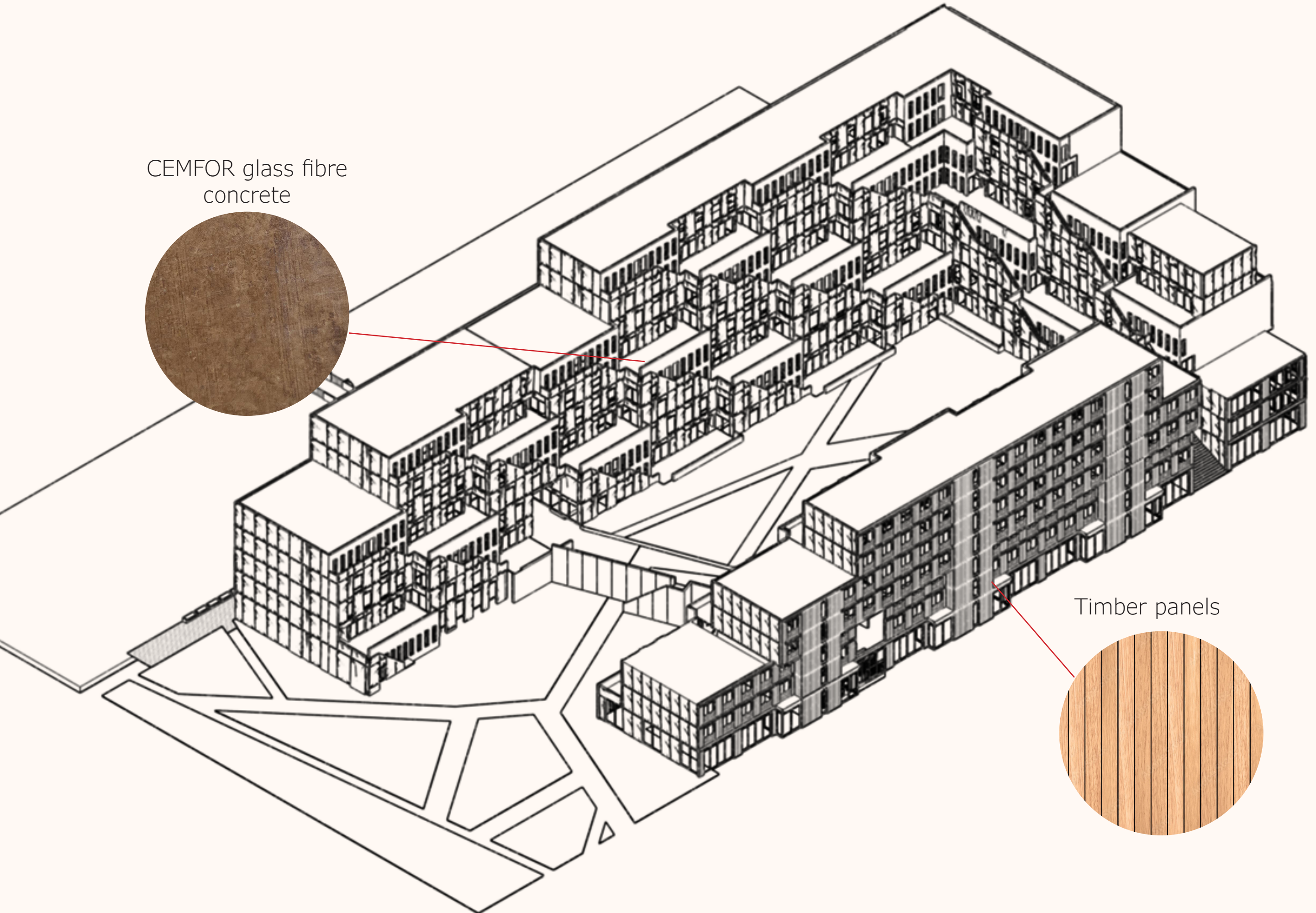
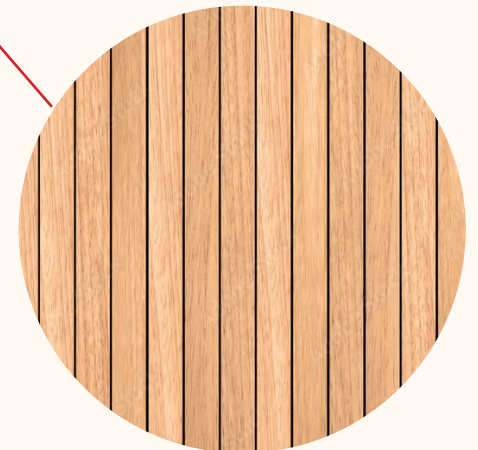


Contrast inside - outside

CEMFOR glass fibre
concrete



Timber panels



Floor plan - ground floor - 1:200

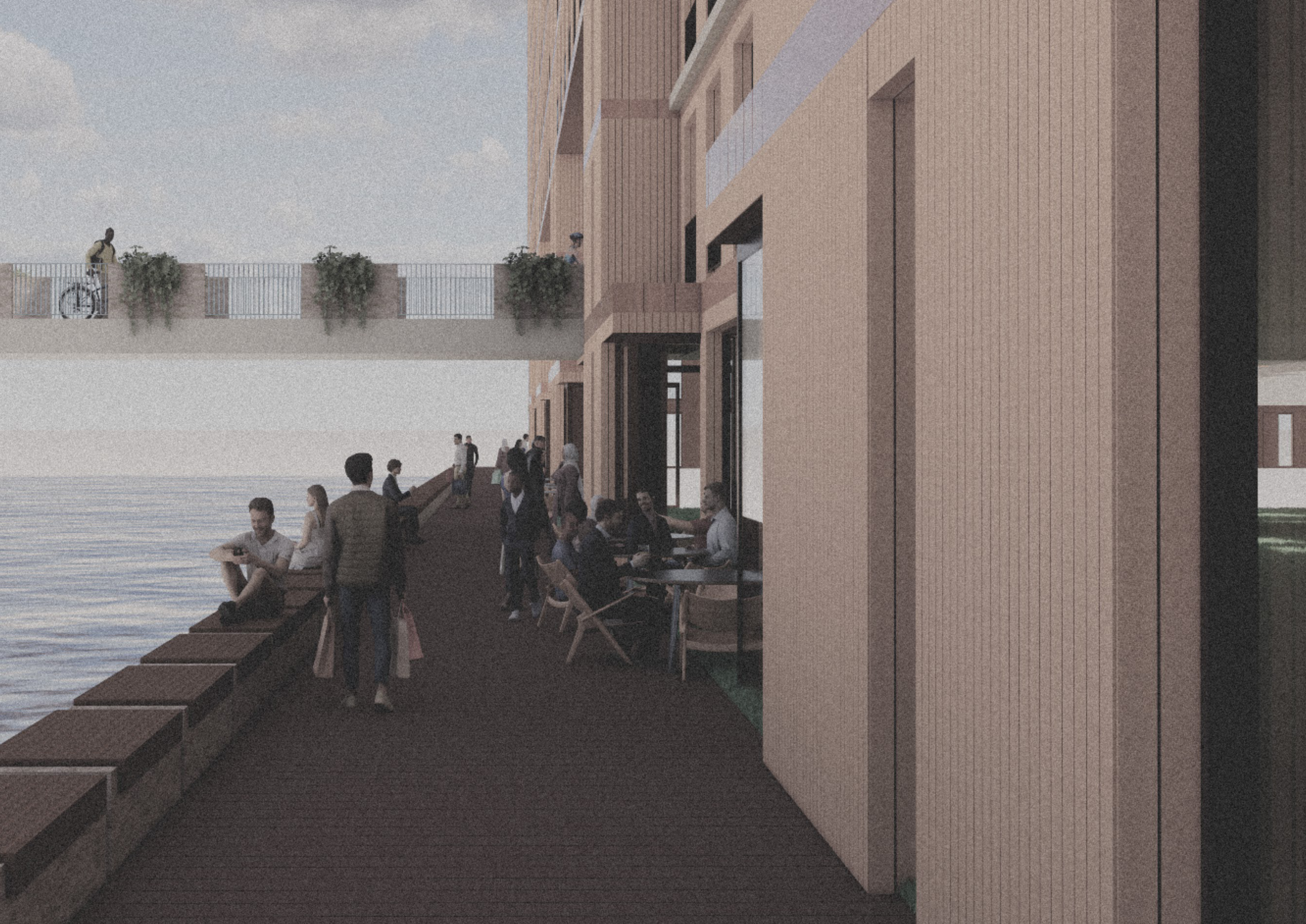


Floor plan - ground floor - 1:200



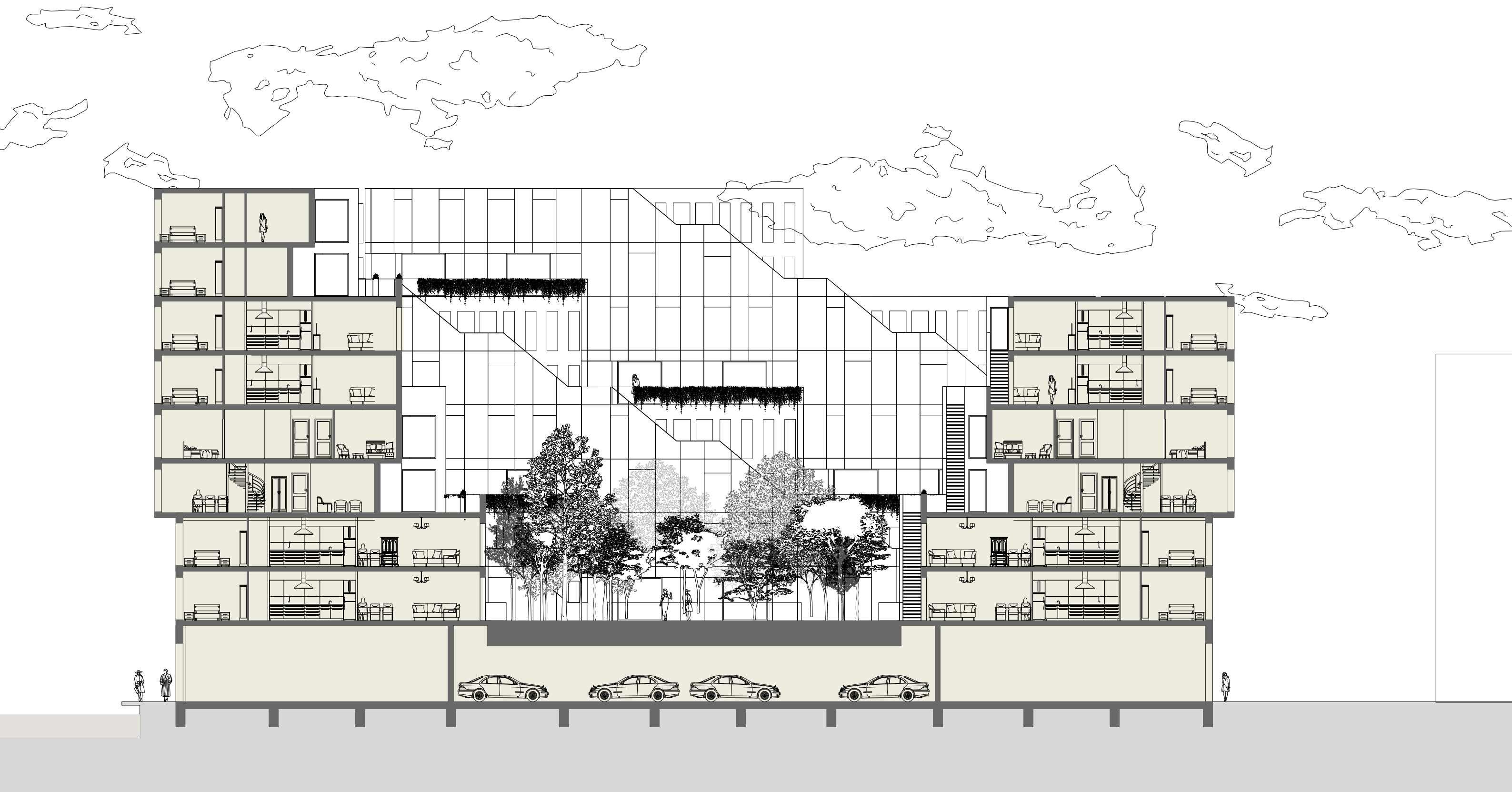
Floor plan - first floor - 1:200



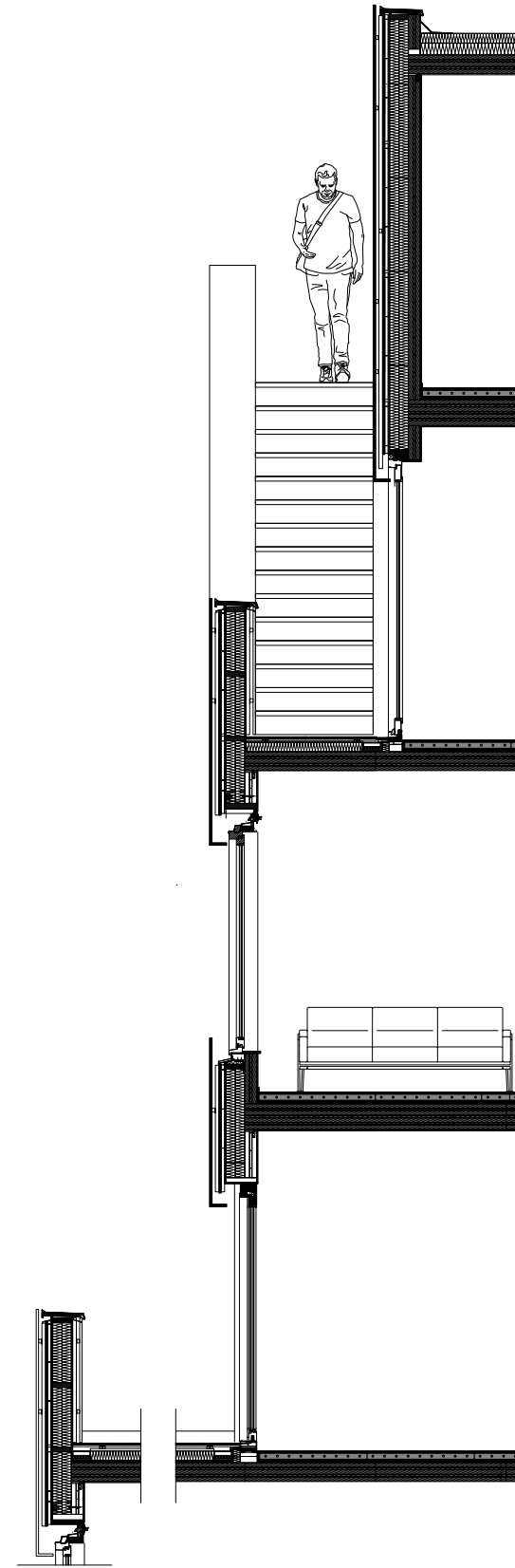
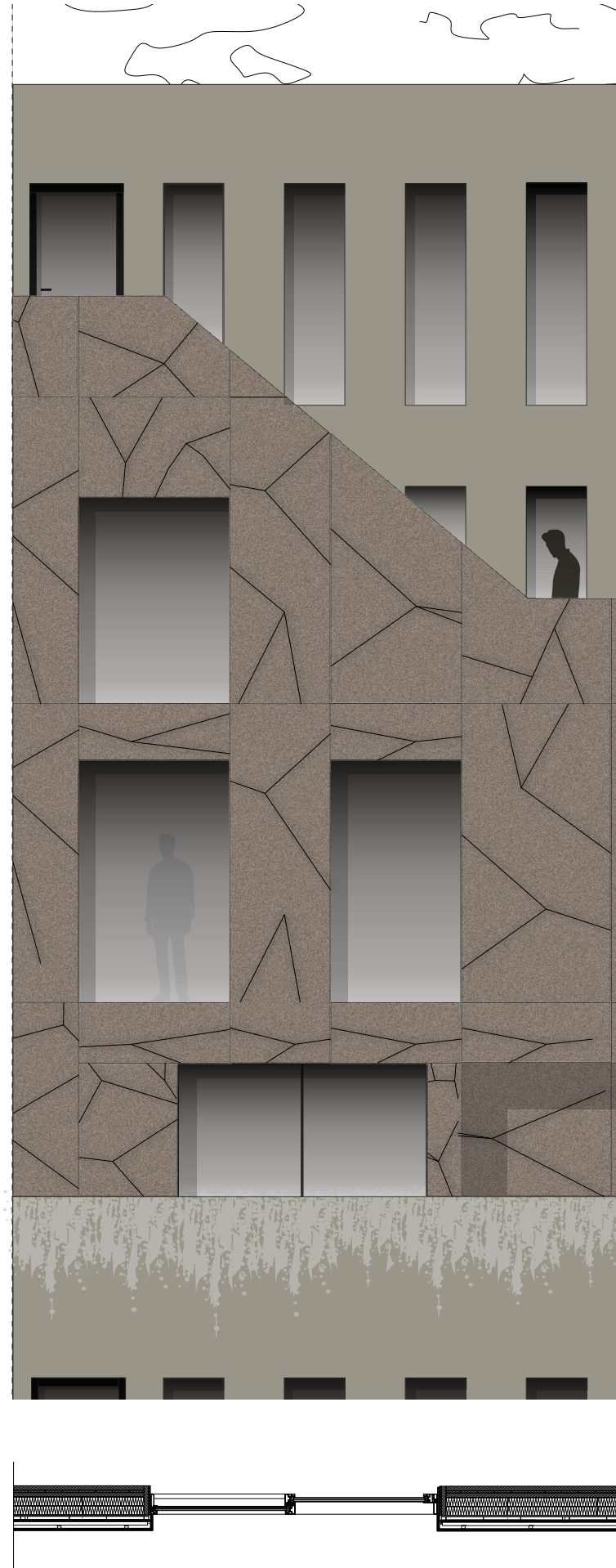




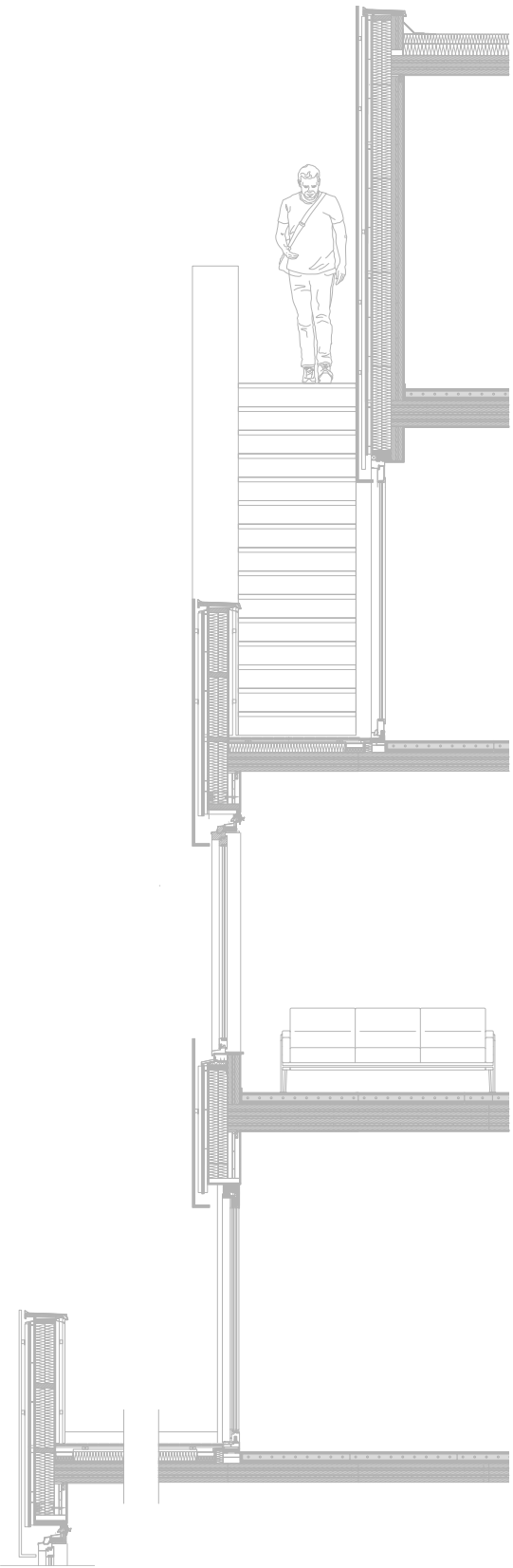
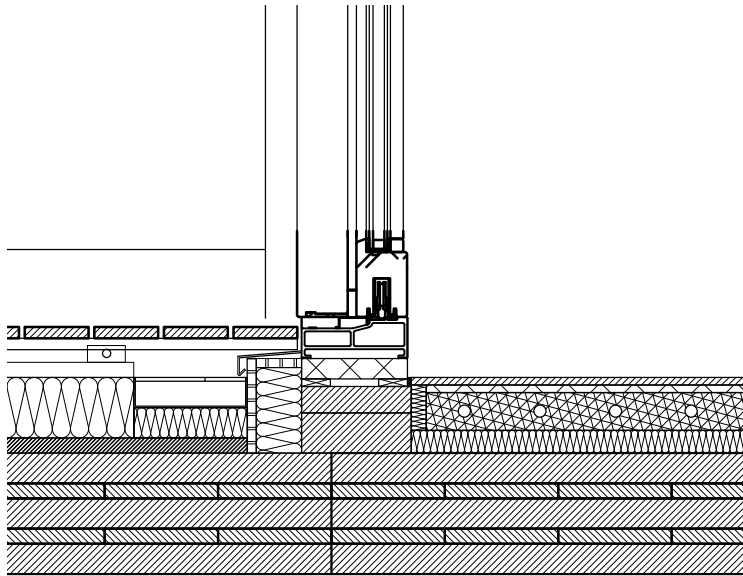
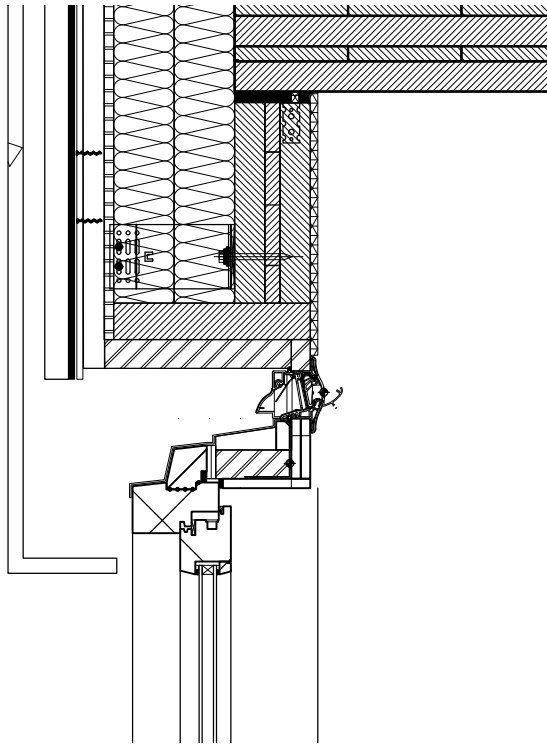
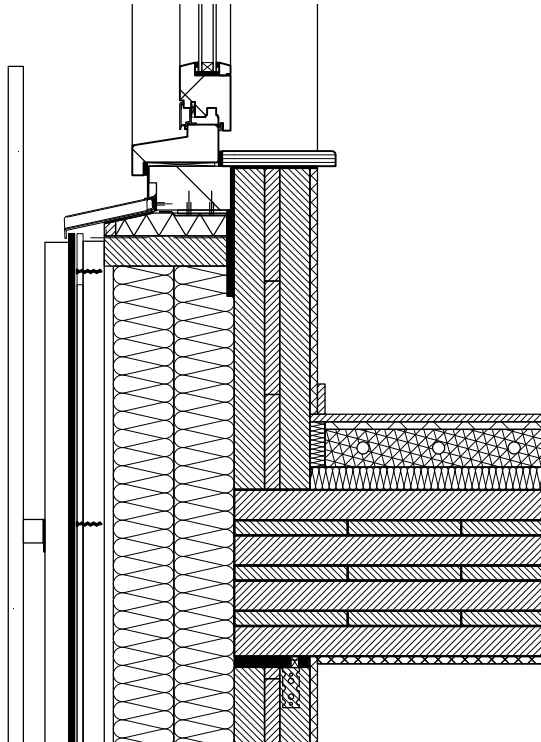
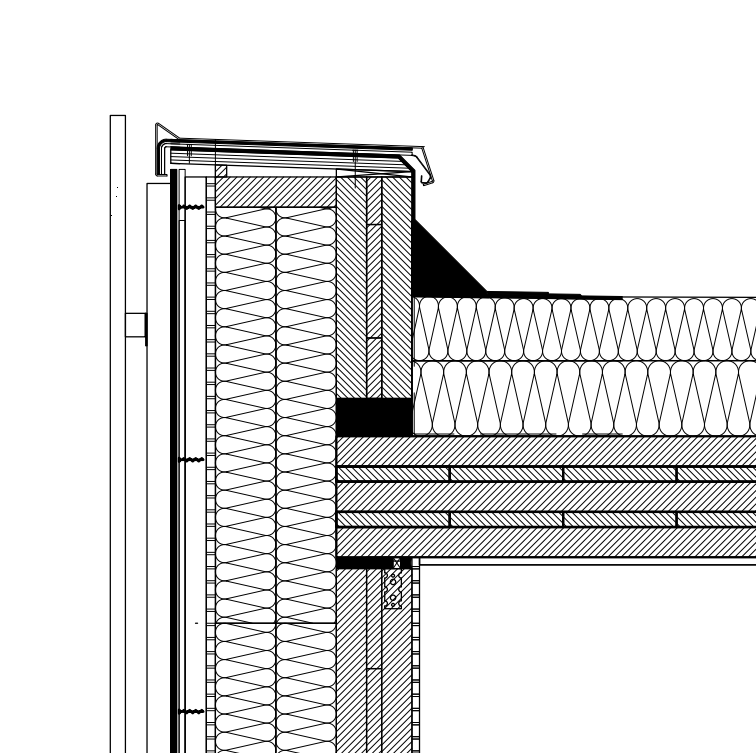
Section 1:200



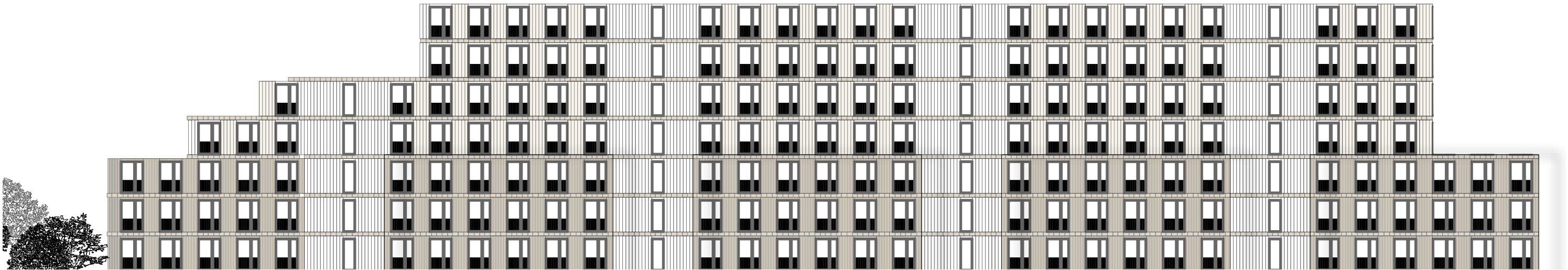
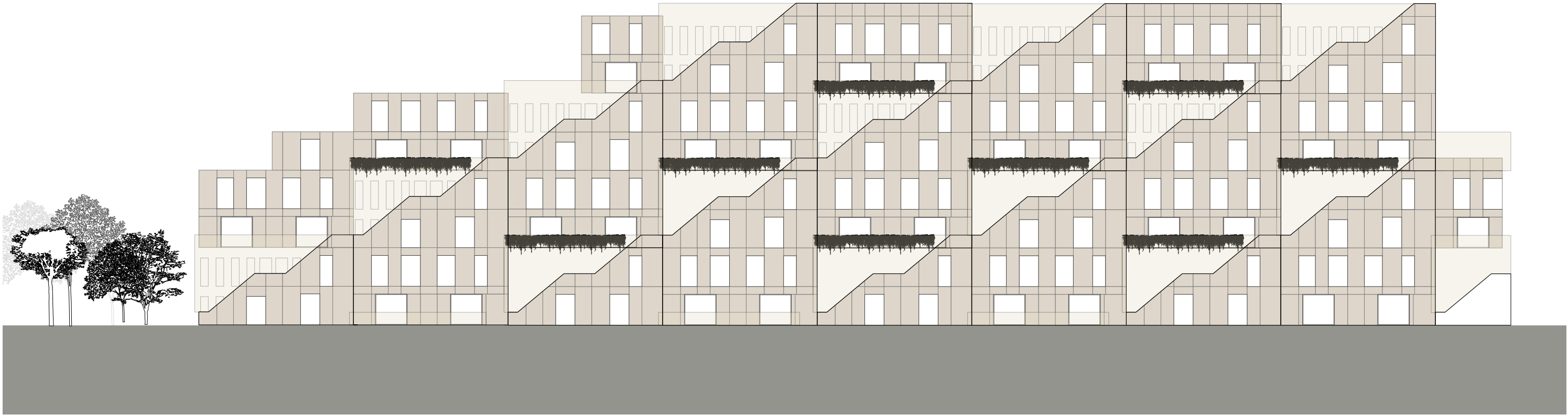
Facade Fragment 1:20



Details

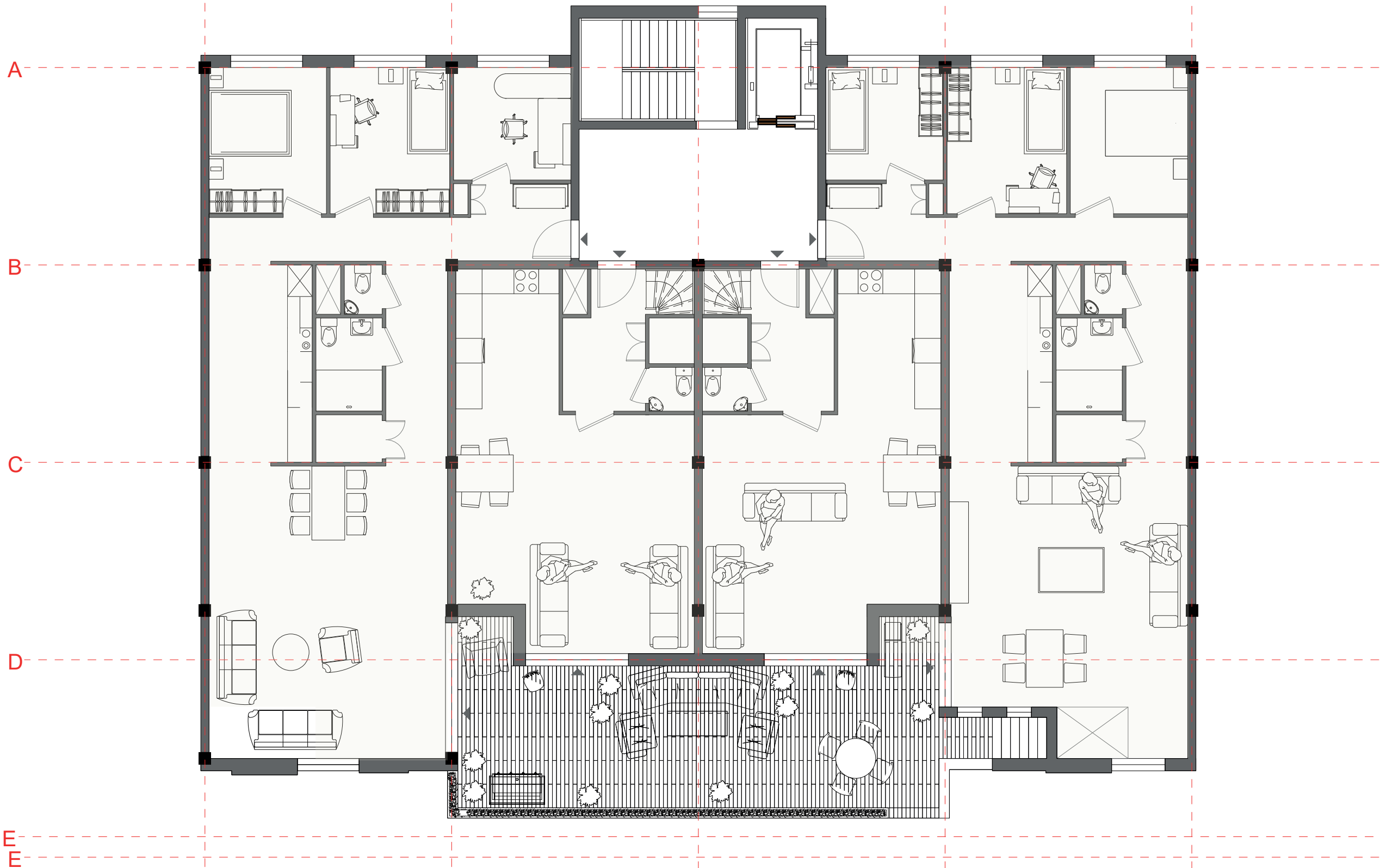


Elevations

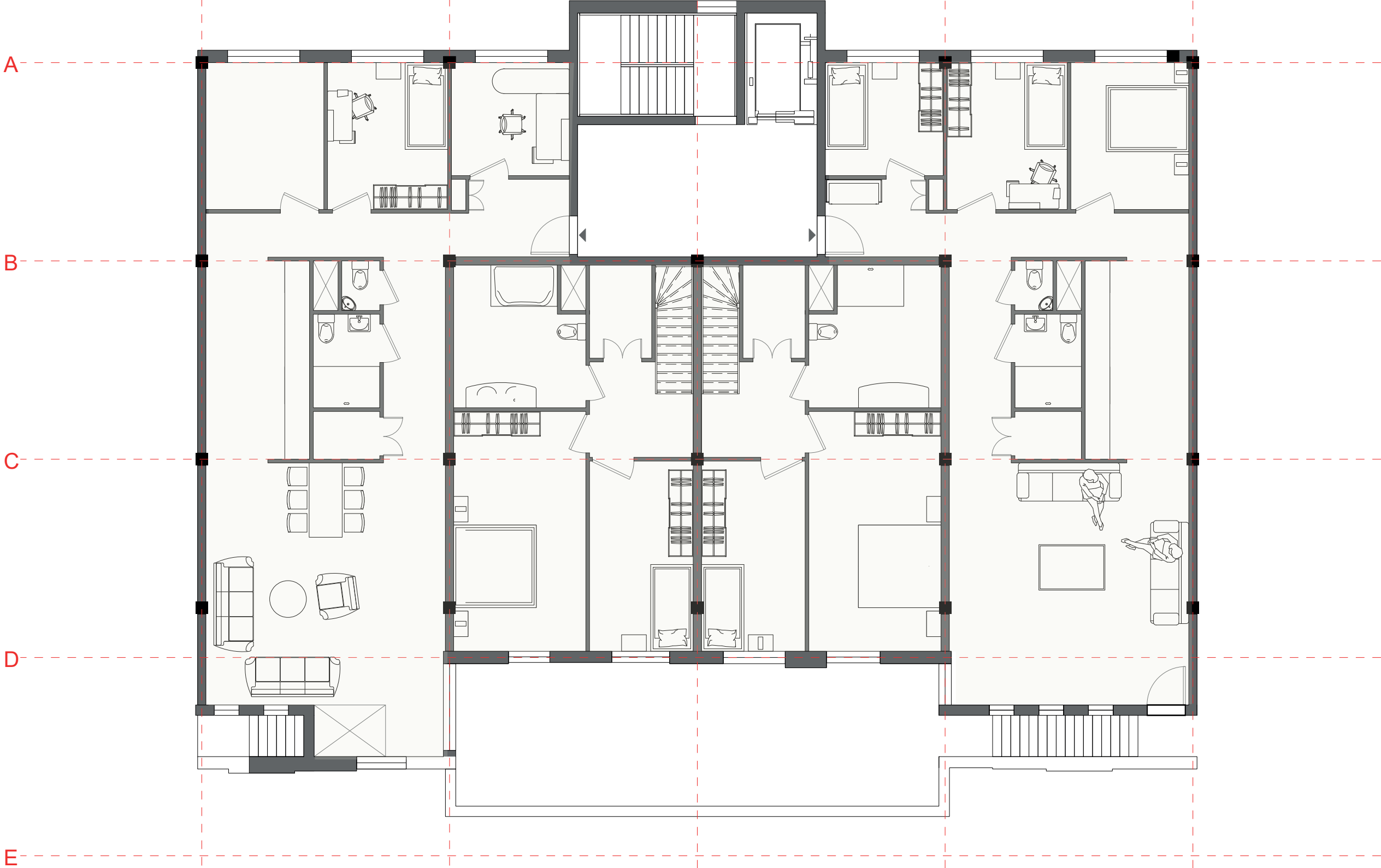




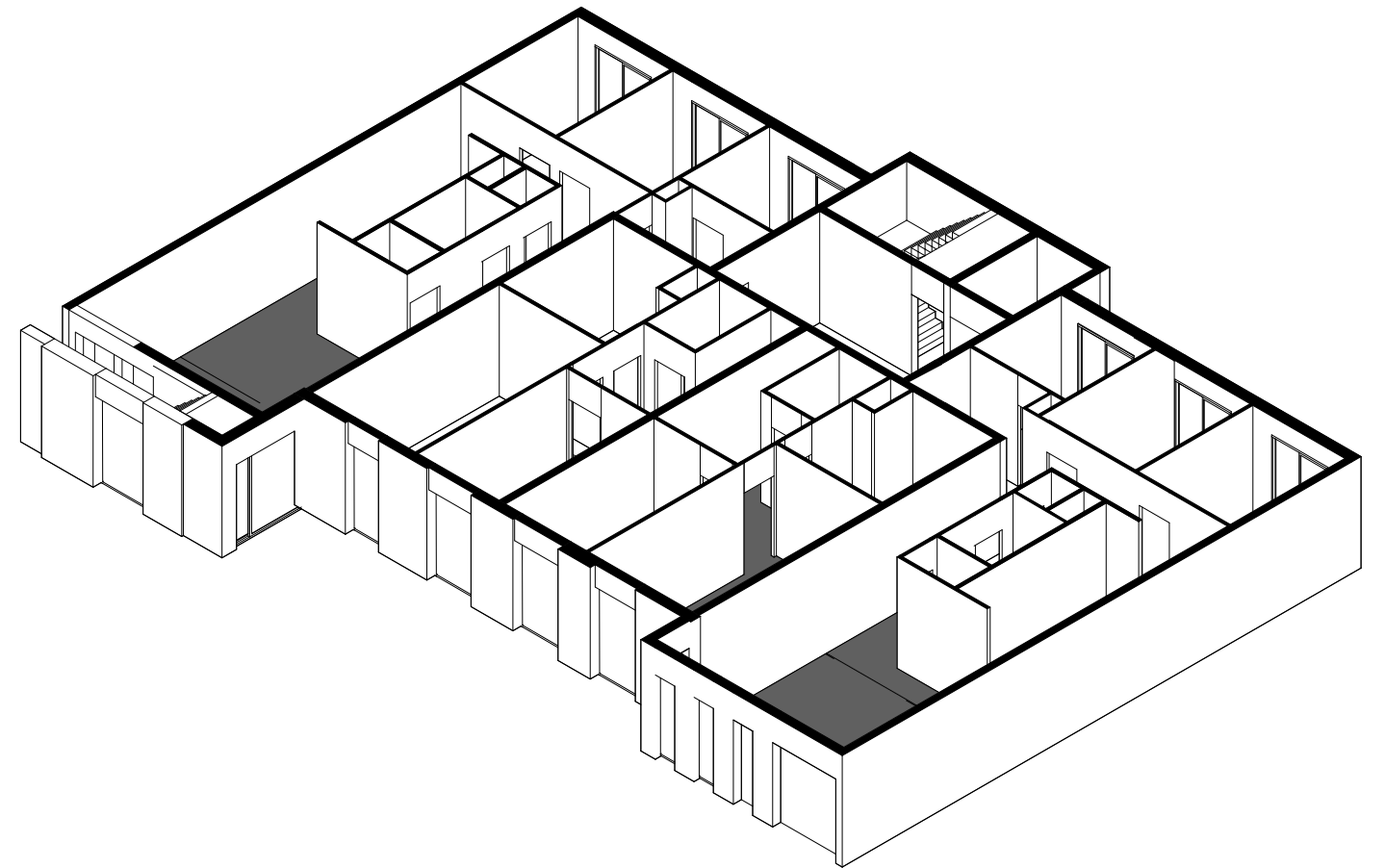
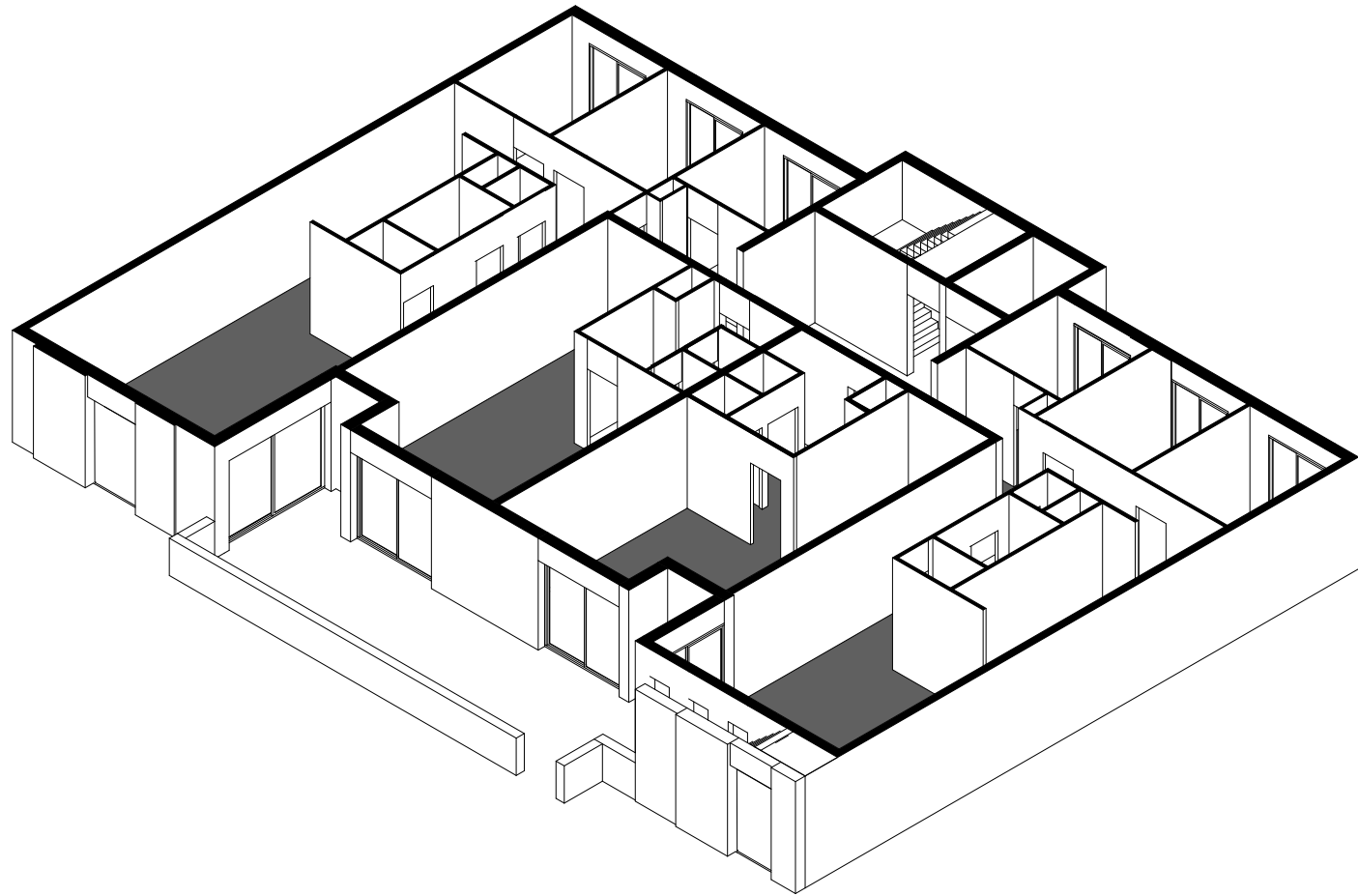
Floor plan - dwellings - first floor



Floor plan - dwellings - second floor



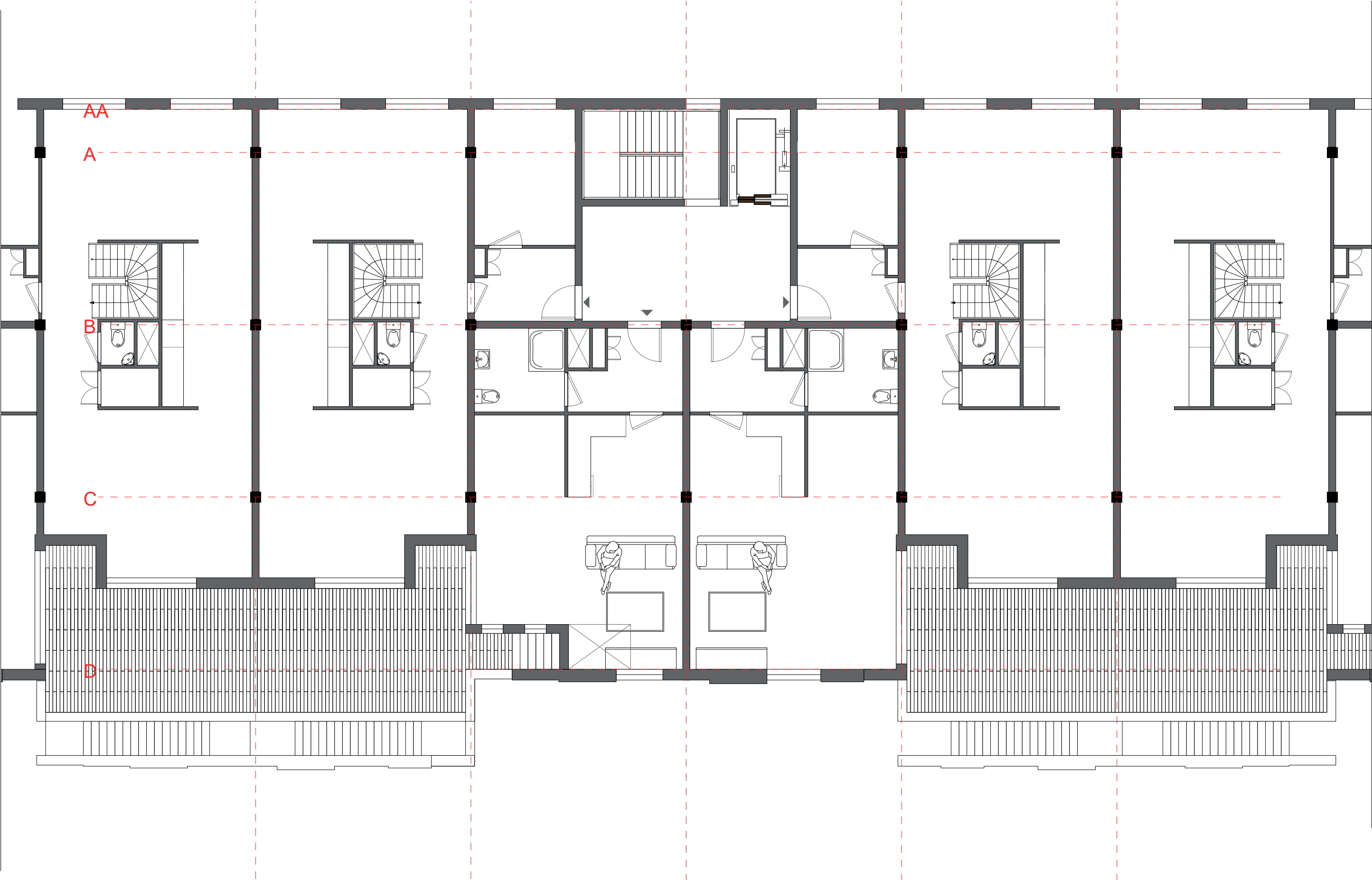
Cluster 1



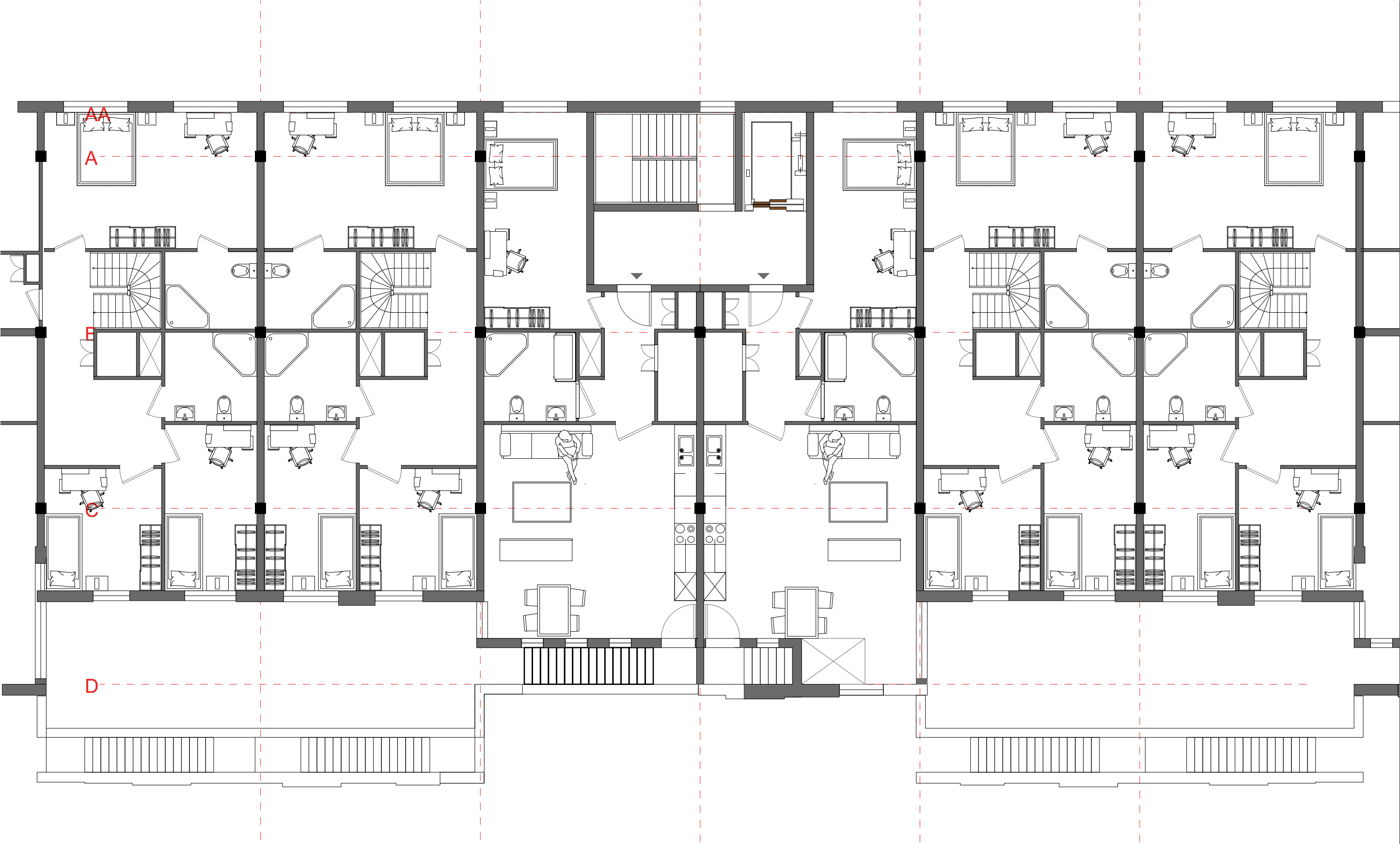


Shared terrace area: 43 m²
Pro rata per household: 7 m²

Floor plan - dwellings - third floor



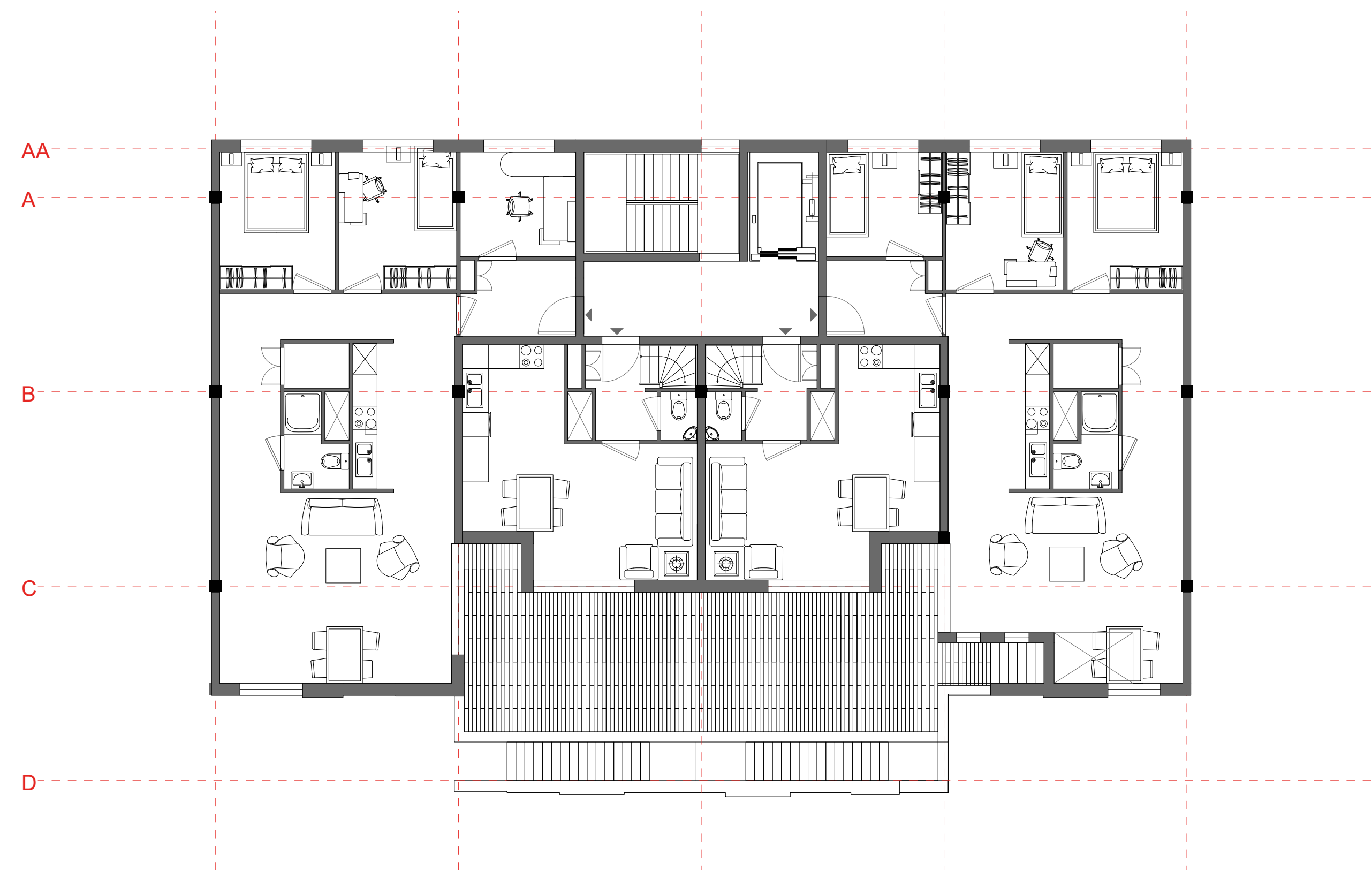
Floor plan - dwellings - fourth floor



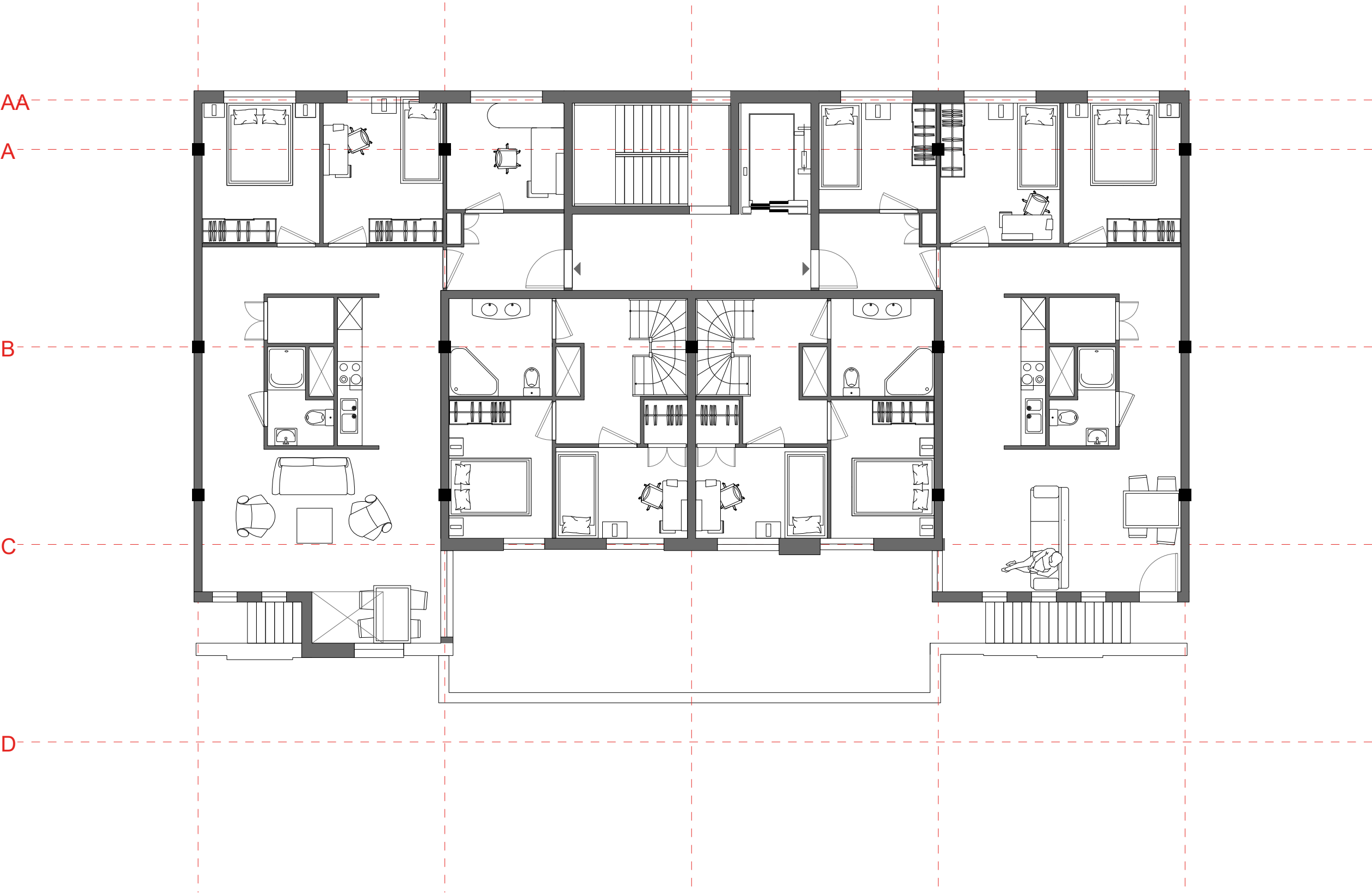




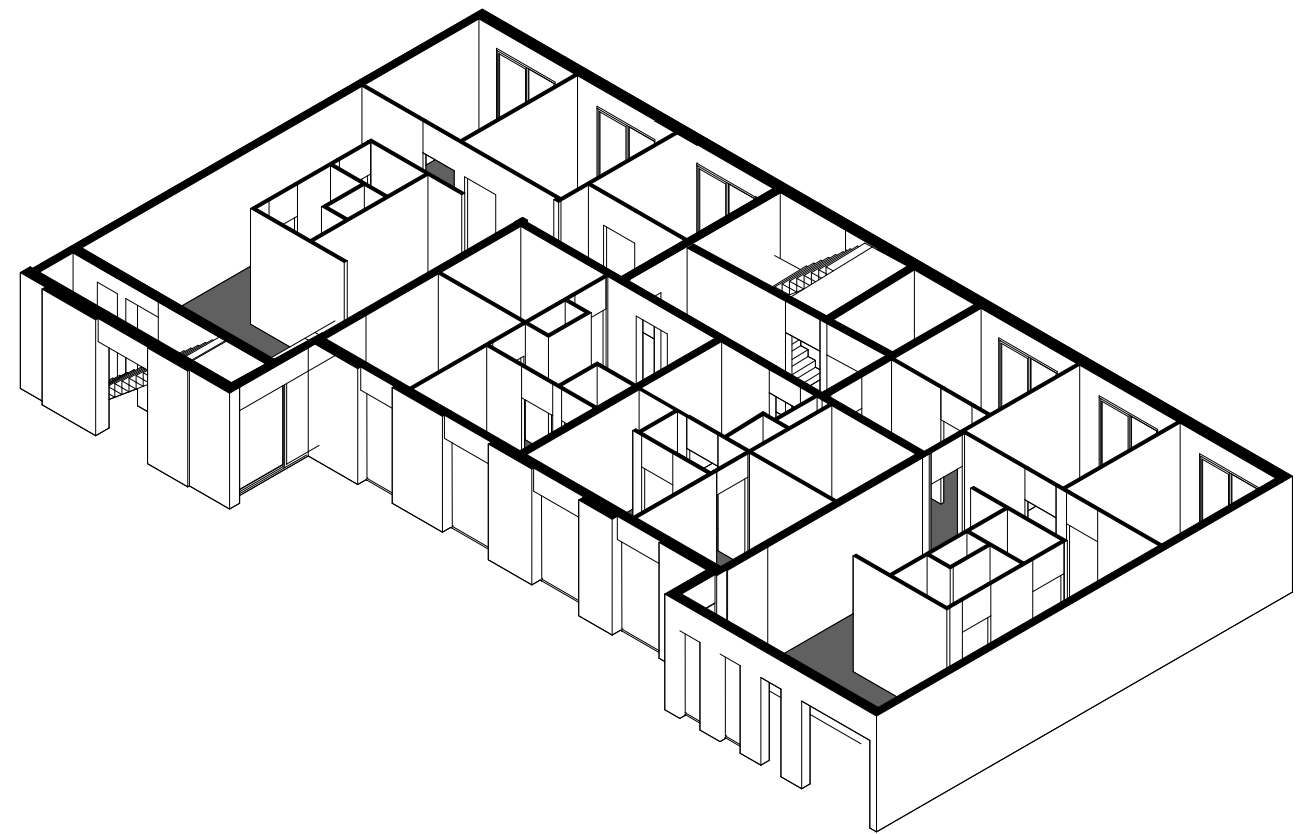
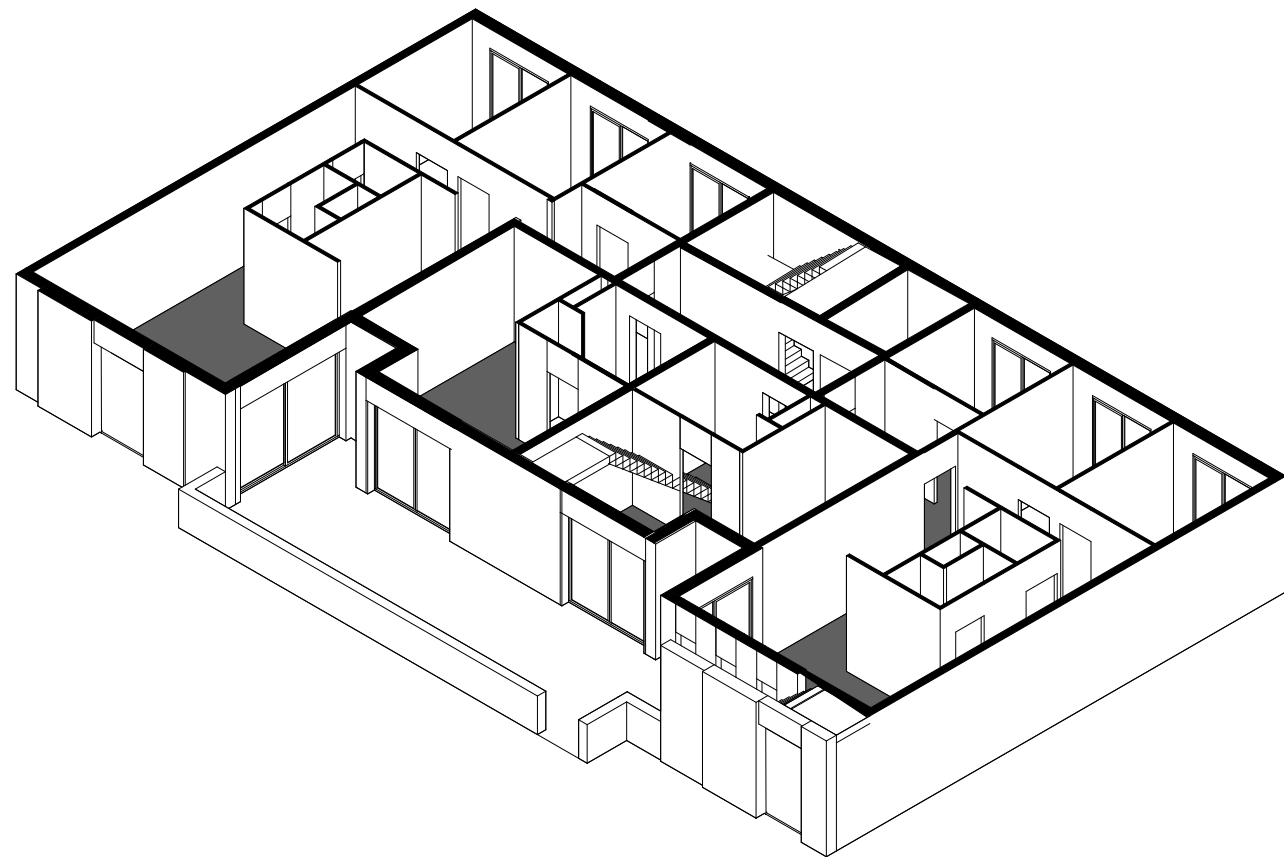
Floor plan - dwellings - fifth floor



Floor plan - dwellings - sixth floor



Cluster 3



Floor plan - dwellings - seventh floor

