

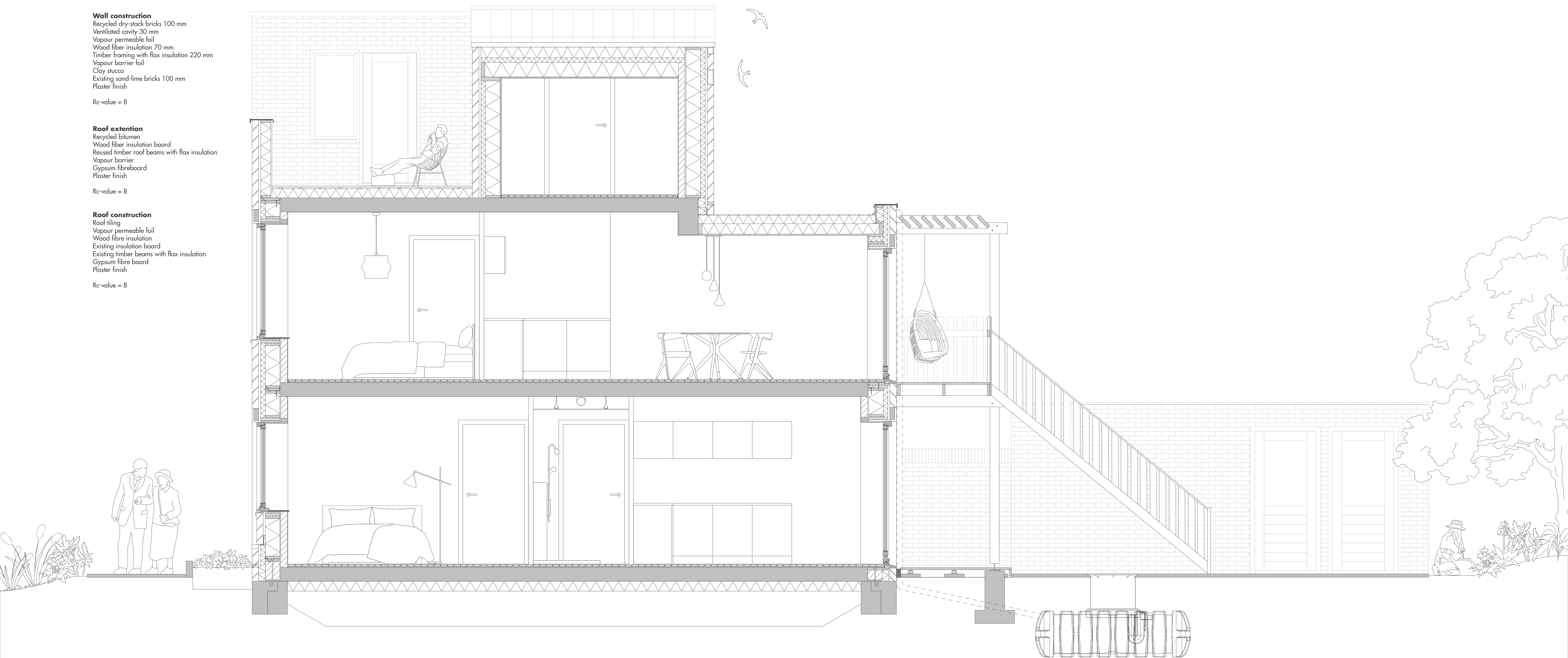
# TECHNICAL DETAIL SECTION

## 1:50

**Wall construction**  
Recycled dry-stack bricks 100 mm  
Ventilated cavity 30 mm  
Vapour permeable foil  
Wood fiber insulation 70 mm  
Timber framing with flax insulation 220 mm  
Vapour barrier foil  
Clay stucco  
Existing sand-lime bricks 100 mm  
Plaster finish  
Rc-value = 8

**Roof extention**  
Recycled bitumen  
Wood fiber insulation board  
Reused timber roof beams with flax insulation  
Vapour barrier  
Gypsum fibreboard  
Plaster finish  
Rc-value = 8

**Roof construction**  
Roof tiling  
Vapour permeable foil  
Wood fibre insulation  
Existing insulation board  
Existing timber beams with flax insulation  
Gypsum fibre board  
Plaster finish  
Rc-value = 8

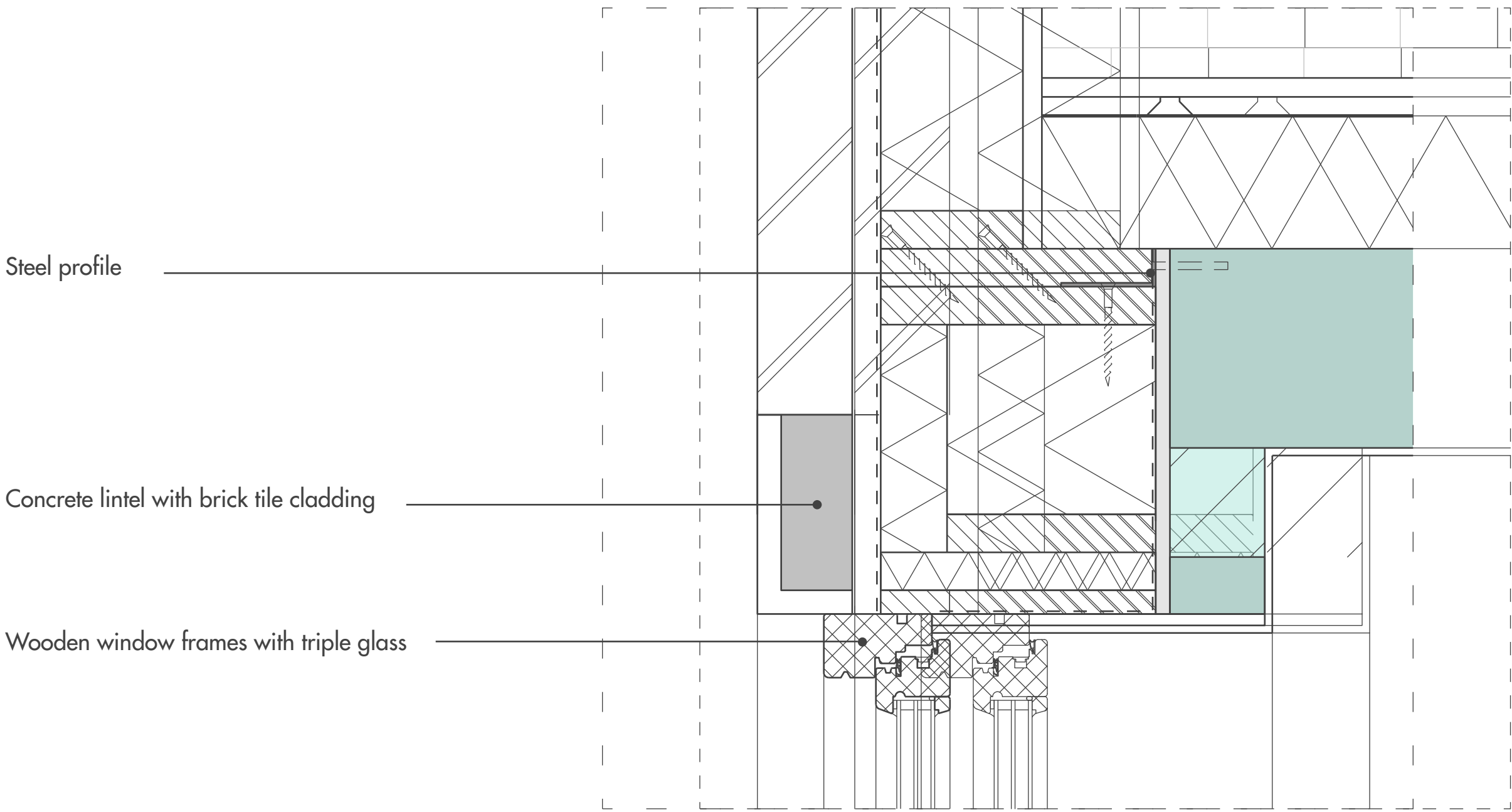




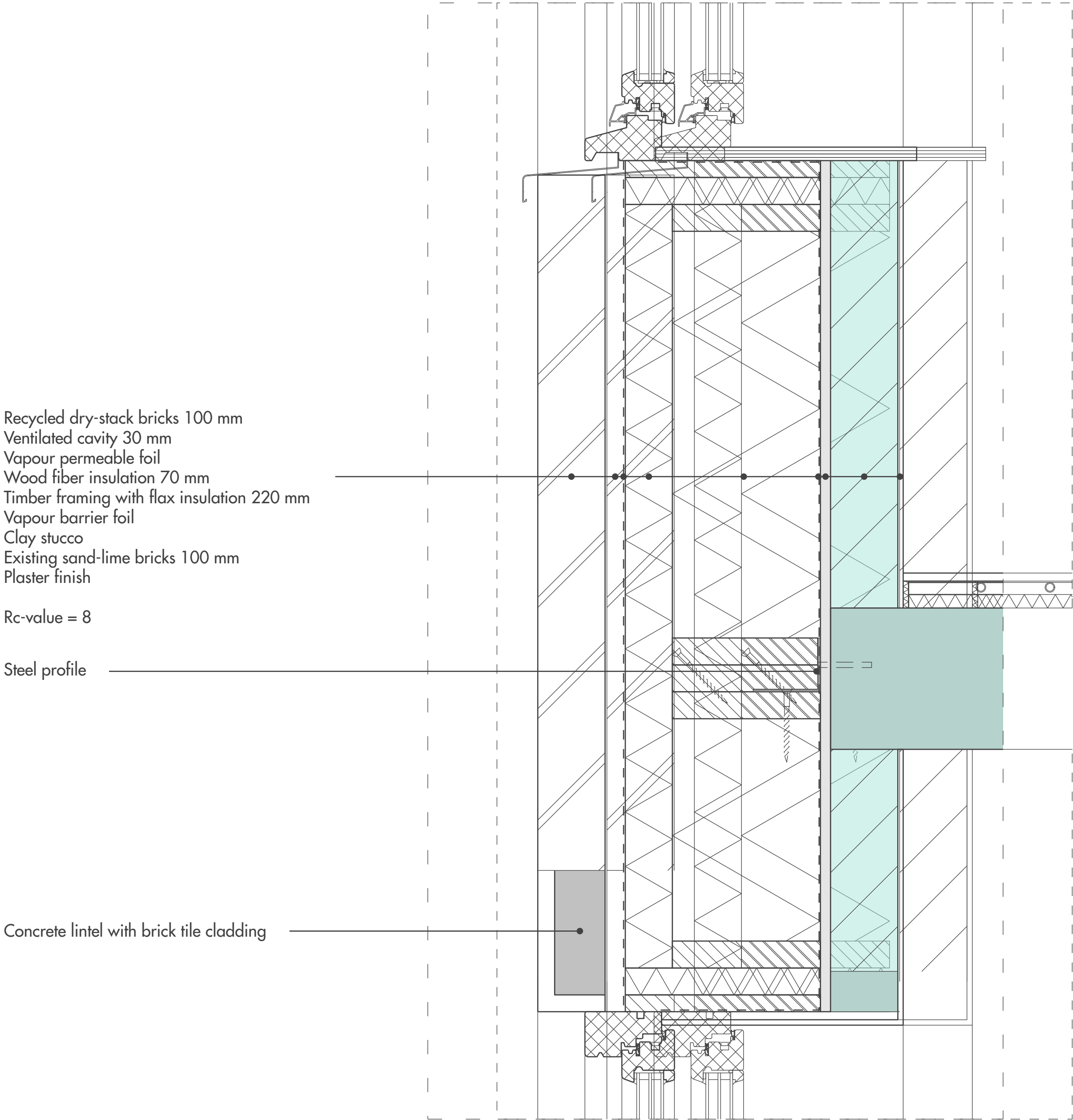
# TECHNICAL DETAILS

## 1:5

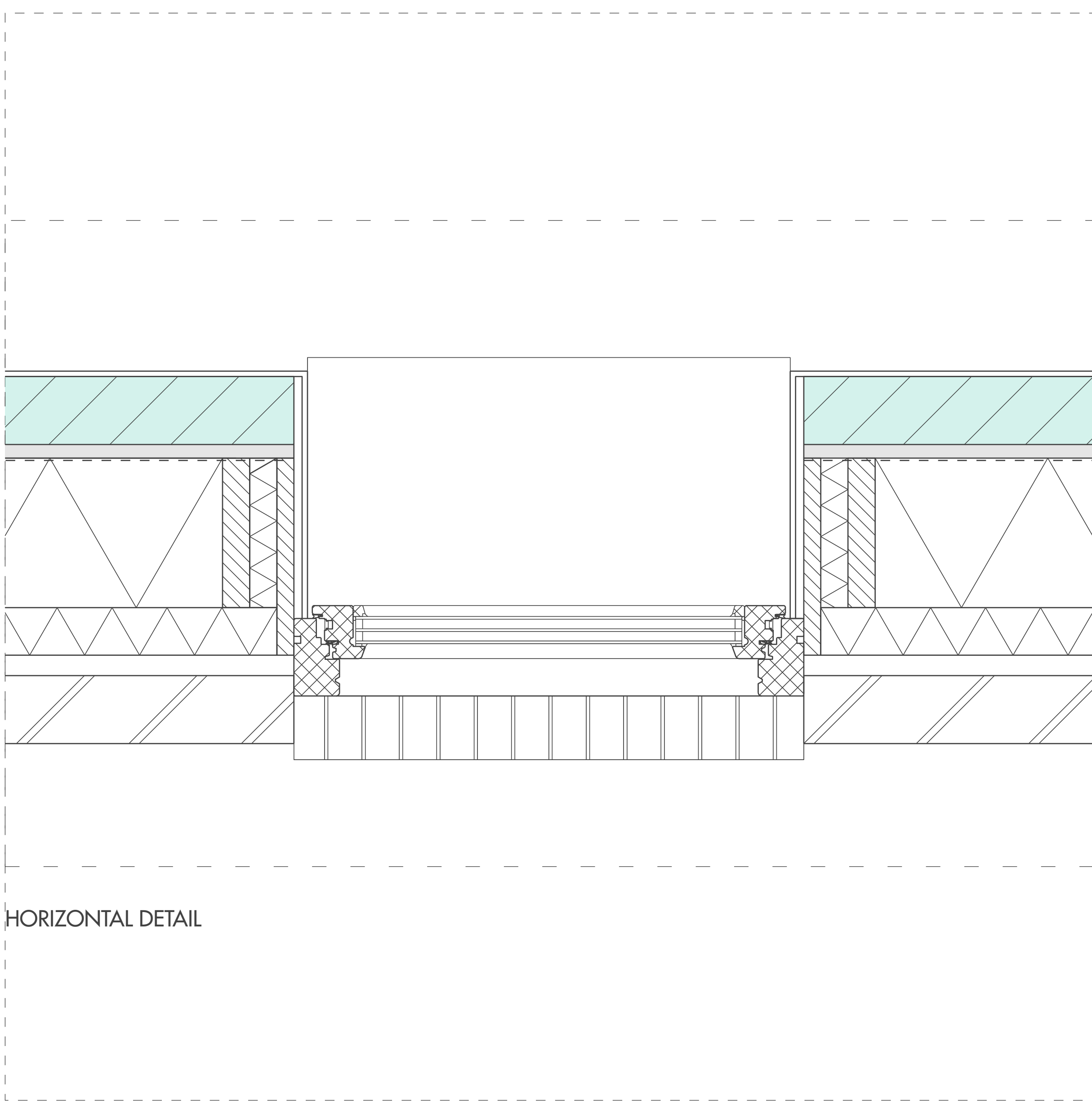
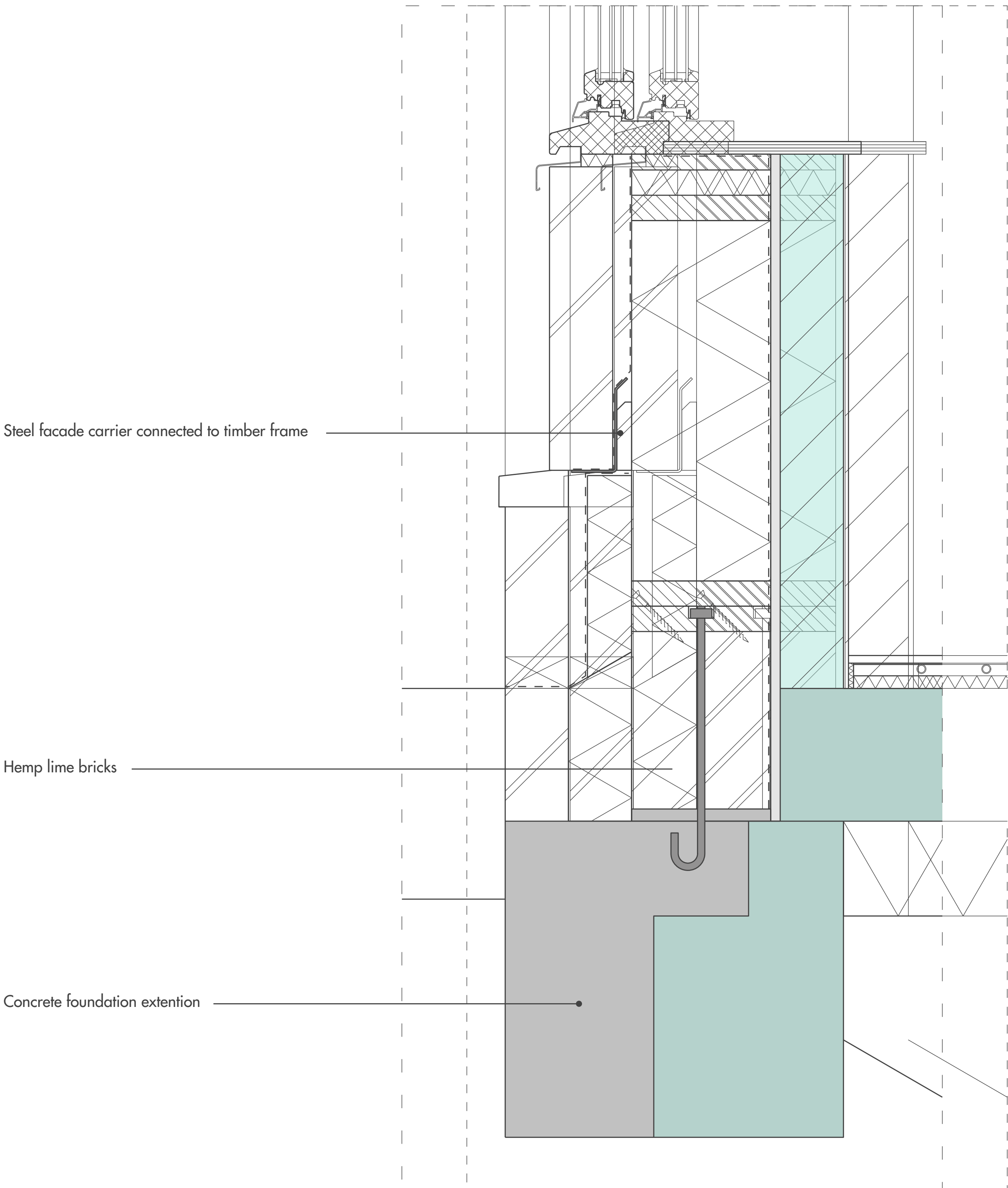
DETAIL 1



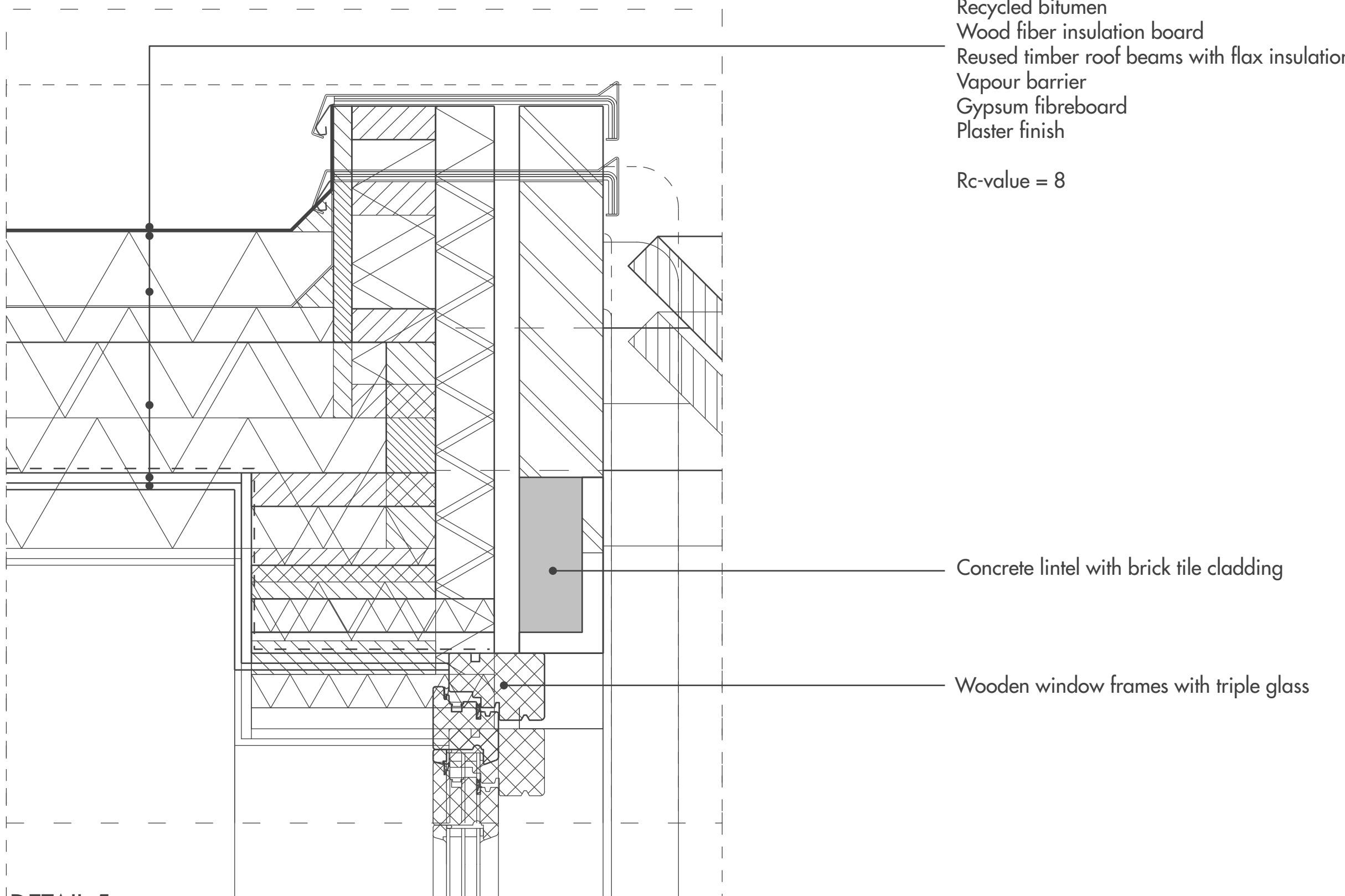
DETAIL 2



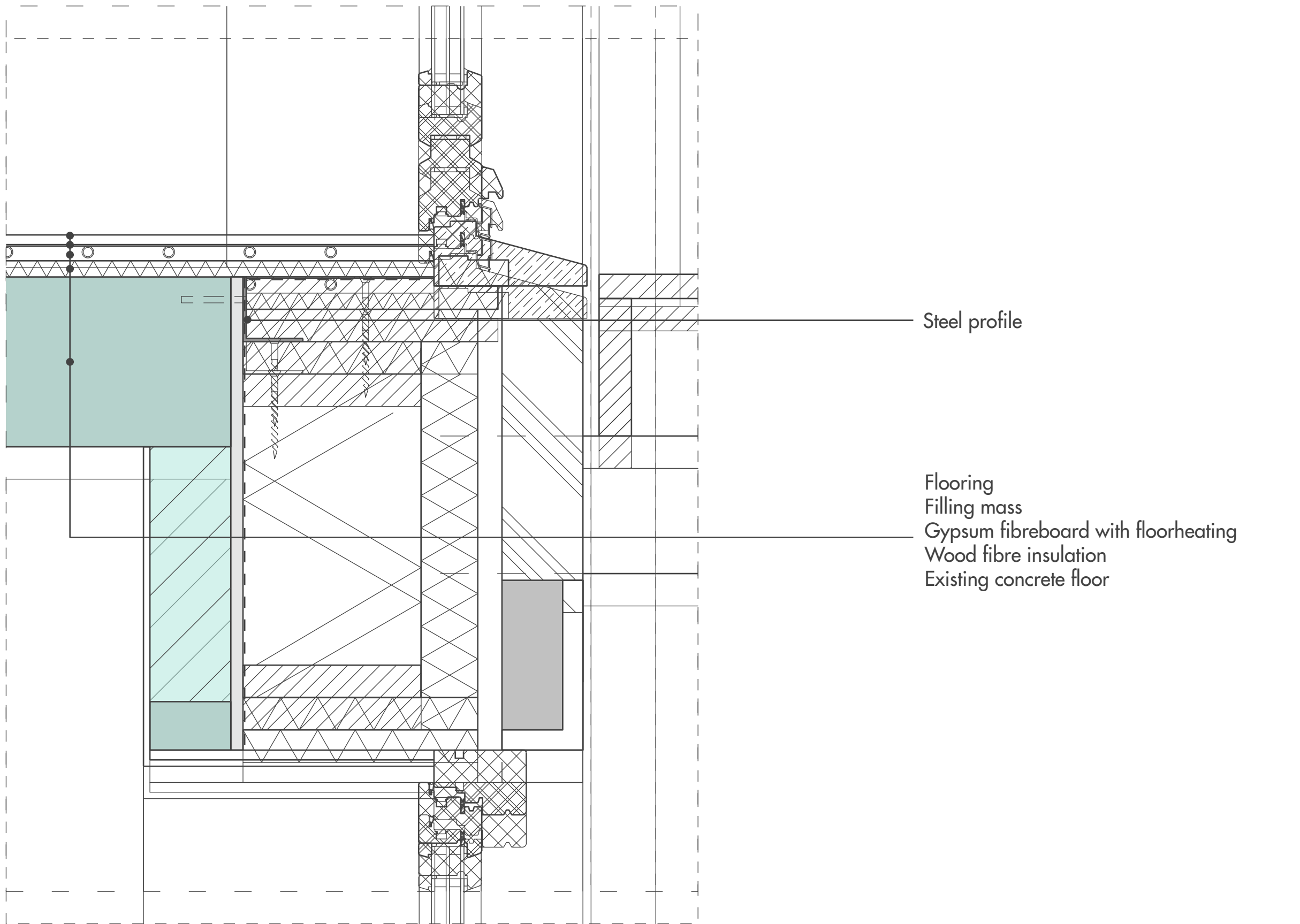
DETAIL 3



DETAIL 4



DETAIL 5



DETAIL 6

