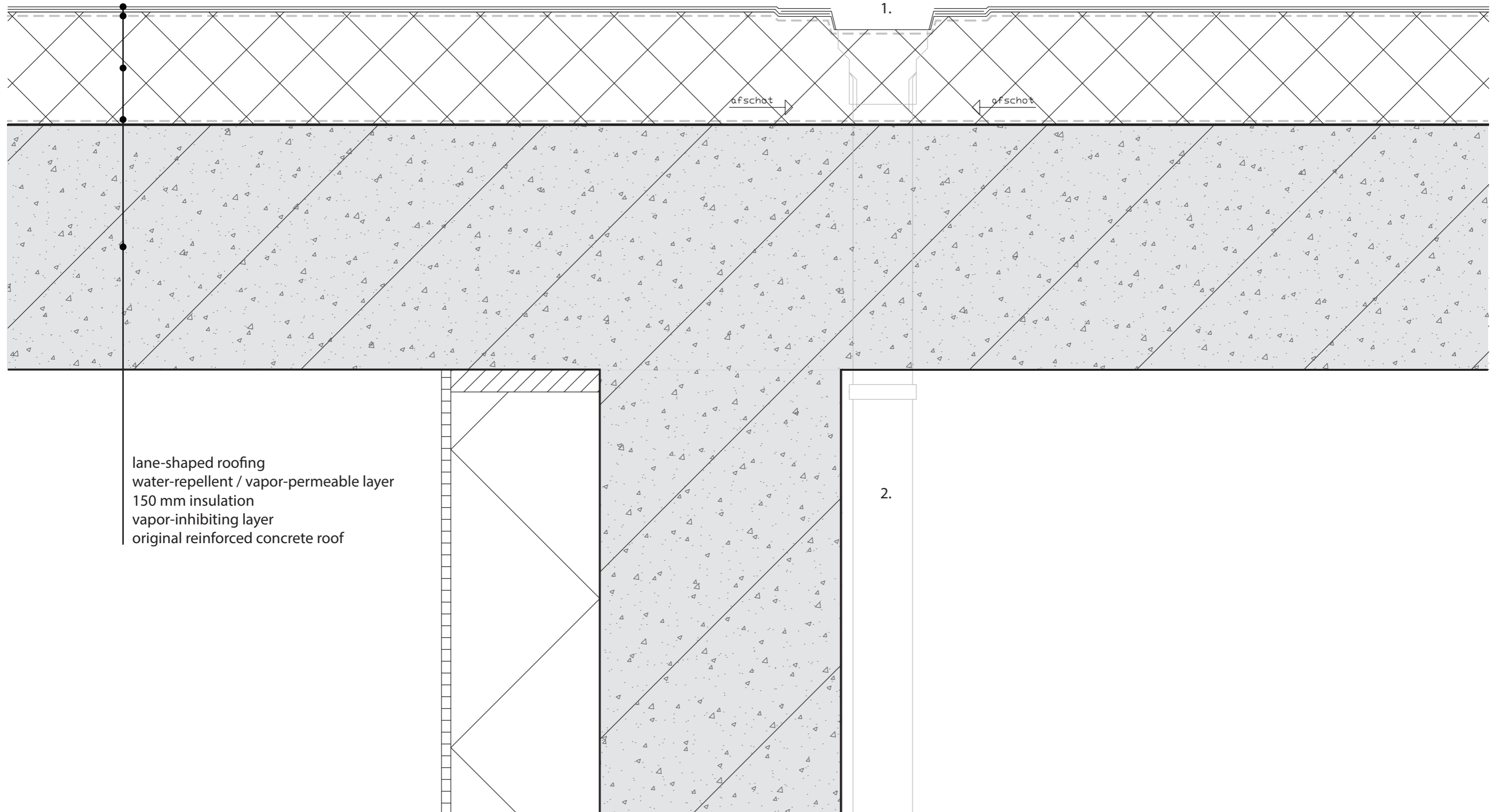


DETAIL 1. ROOF DETAIL  
SCALE 1:5

- 1. roof gutter
- 2. rain pipe drainage



lane-shaped roofing  
water-repellent / vapor-permeable layer  
150 mm insulation  
vapor-inhibiting layer  
original reinforced concrete roof

1.

2.

abfschot

abfschot

# DETAIL 2. VERTICAL WINDOW DETAIL

SCALE 1:5

- 12.5 mm plasterboard
- vapor-inhibiting layer
- 200 mm insulation
- water-repellent / vapor-permeable layer
- 225 mm original reinforced concrete
- 5 mm sand cement finishing layer

- 1. Plasterboard protection corner
- 2. 66 mm Classic-ISO-PLUS steel window frame
- 3. original detail around windows
- 4. HR++ double glass window
- 5. water cutting hole

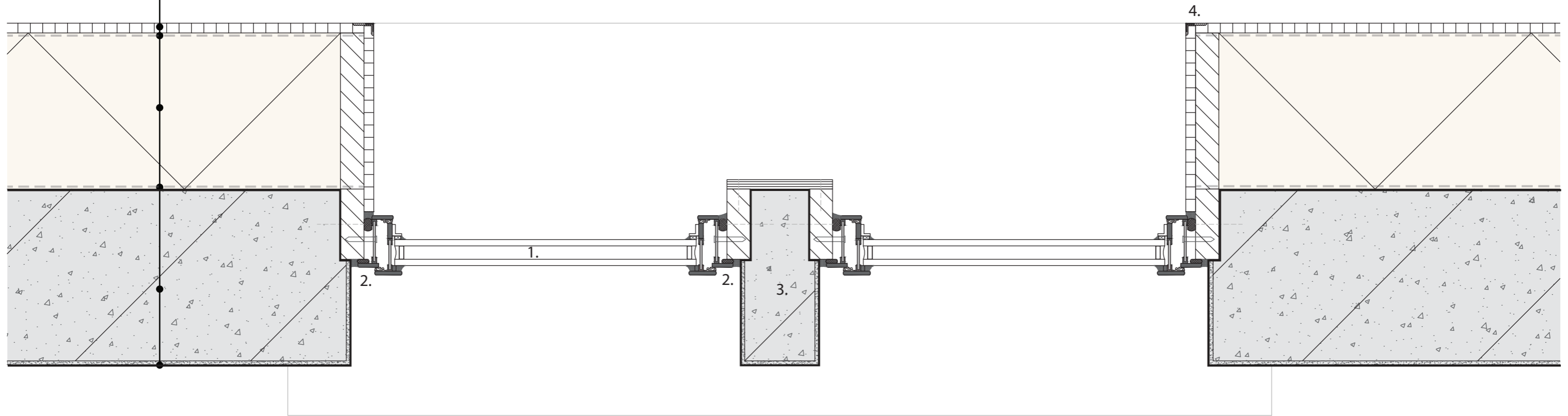


# DETAIL 3. HORIZONTAL WINDOW DETAIL

SCALE 1:5

12.5 mm plasterboard  
vapor-inhibiting layer  
200 mm insulation  
water-repellent / vapor-permeable layer  
225 mm original reinforced concrete  
5 mm sand cement finishing layer

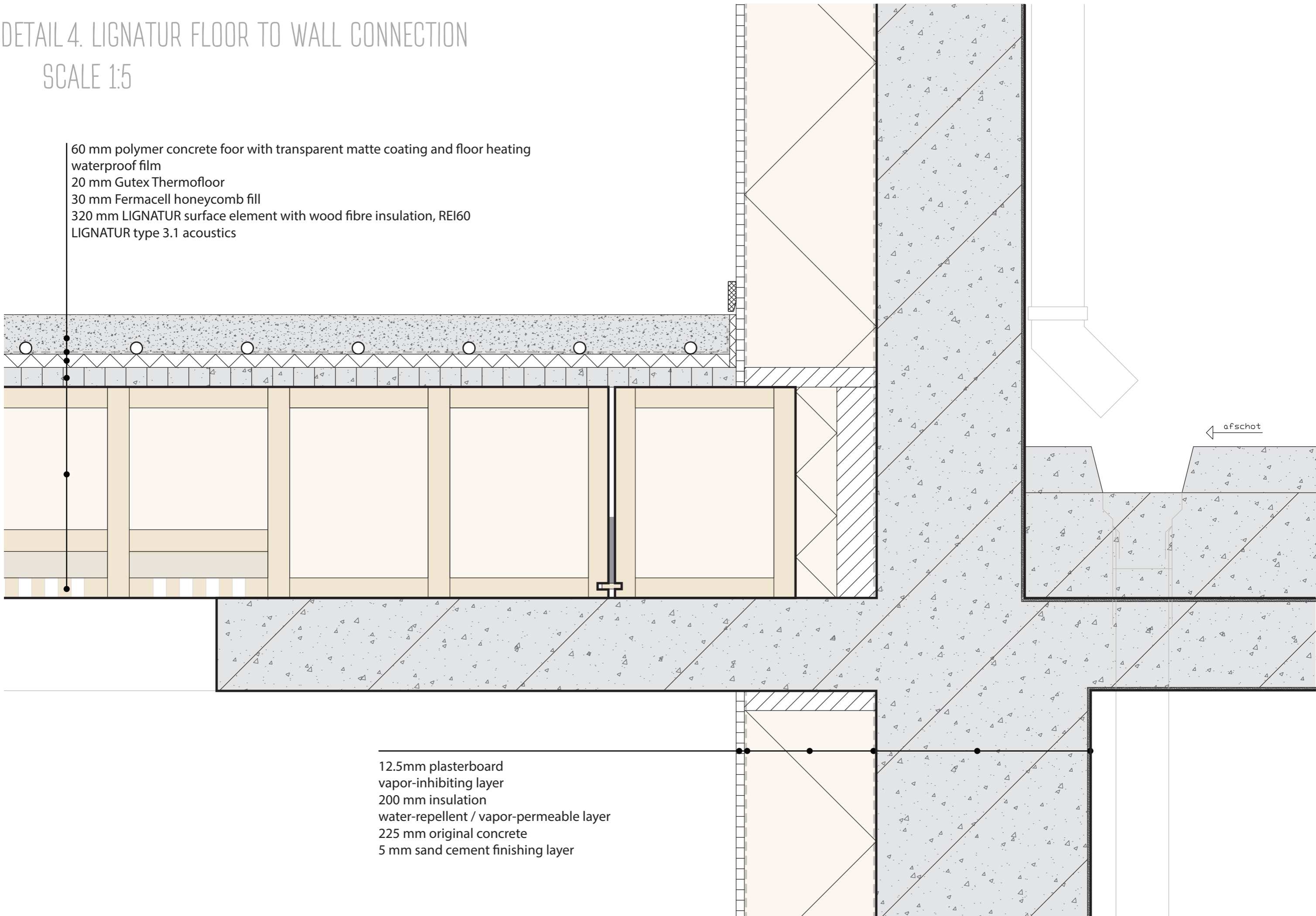
1. HR++ double glass window
2. 66 mm Classic-ISO-PLUS steel window frame
3. original concrete slat between windows
4. plasterboard protection corner



# DETAIL 4. LIGNATUR FLOOR TO WALL CONNECTION

SCALE 1:5

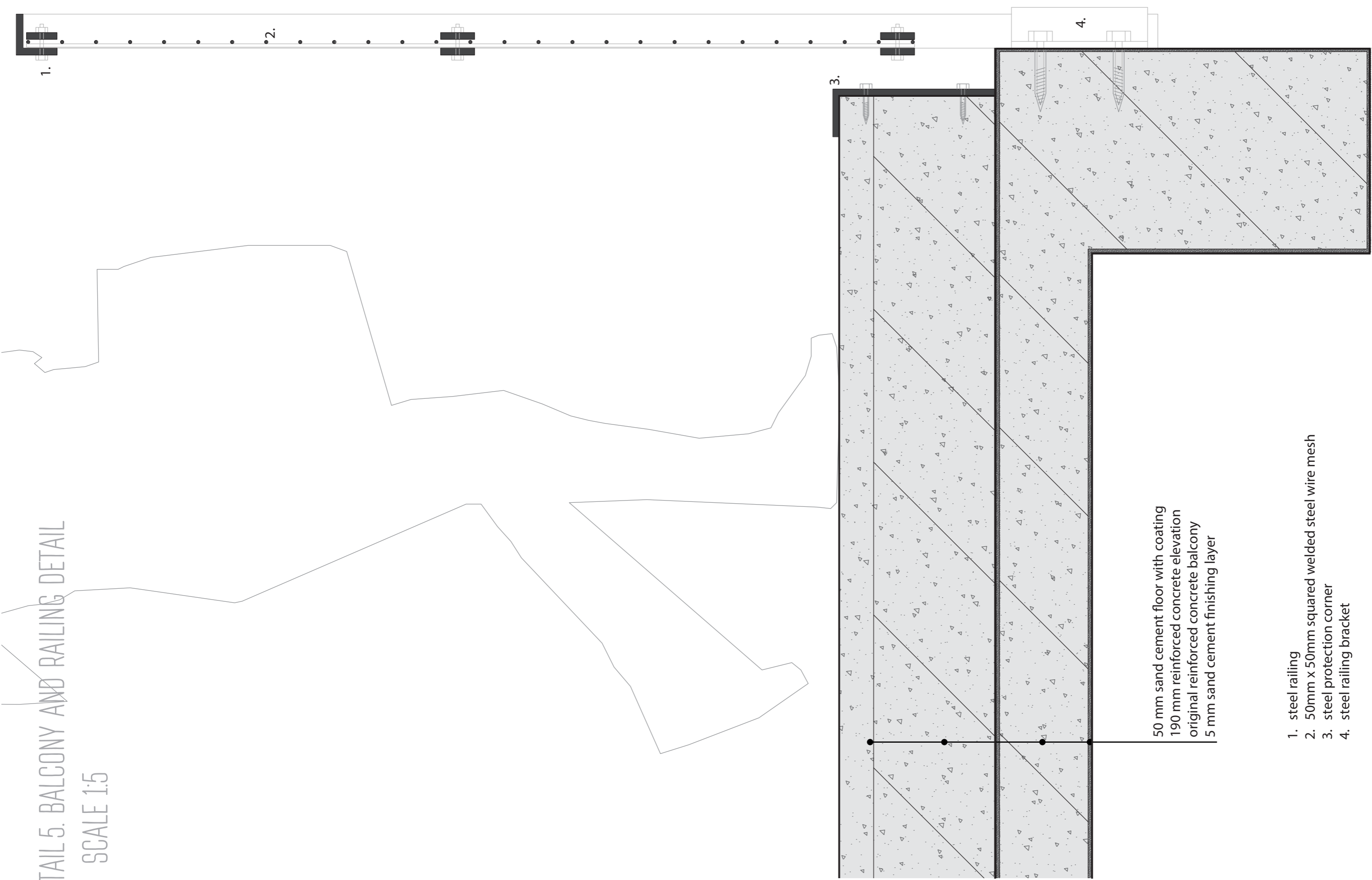
60 mm polymer concrete floor with transparent matte coating and floor heating  
waterproof film  
20 mm Gutex Thermofloor  
30 mm Fermacell honeycomb fill  
320 mm LIGNATUR surface element with wood fibre insulation, REI60  
LIGNATUR type 3.1 acoustics



12.5mm plasterboard  
vapor-inhibiting layer  
200 mm insulation  
water-repellent / vapor-permeable layer  
225 mm original concrete  
5 mm sand cement finishing layer

DETAIL 5. BALCONY AND RAILING DETAIL

SCALE 1:5



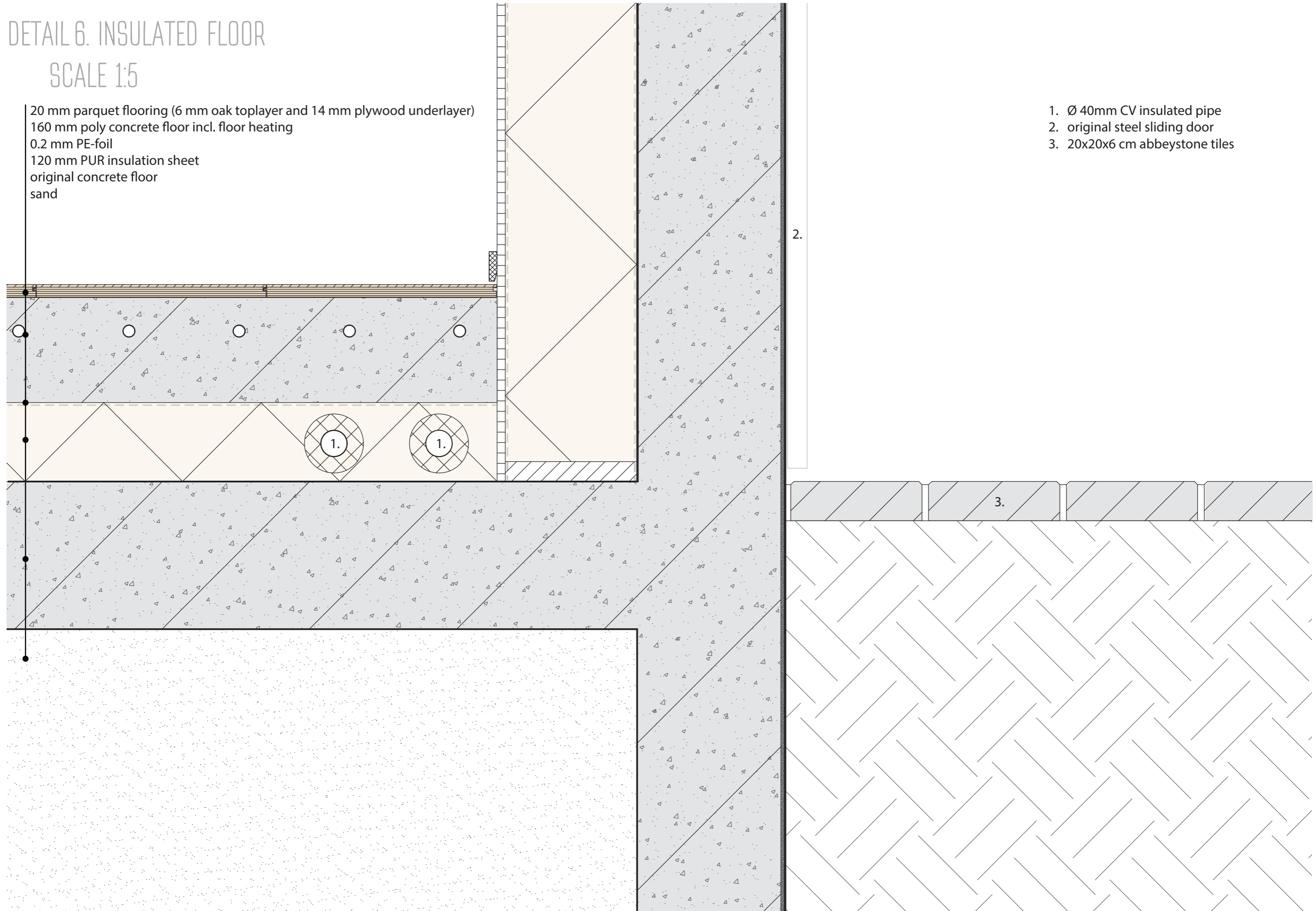
50 mm sand cement floor with coating  
190 mm reinforced concrete elevation  
original reinforced concrete balcony  
5 mm sand cement finishing layer

- 1. steel railing
- 2. 50mm x 50mm squared welded steel wire mesh
- 3. steel protection corner
- 4. steel railing bracket

# DETAIL 6. INSULATED FLOOR

SCALE 1:5

20 mm parquet flooring (6 mm oak toplayer and 14 mm plywood underlayer)  
160 mm poly concrete floor incl. floor heating  
0.2 mm PE-foil  
120 mm PUR insulation sheet  
original concrete floor  
sand



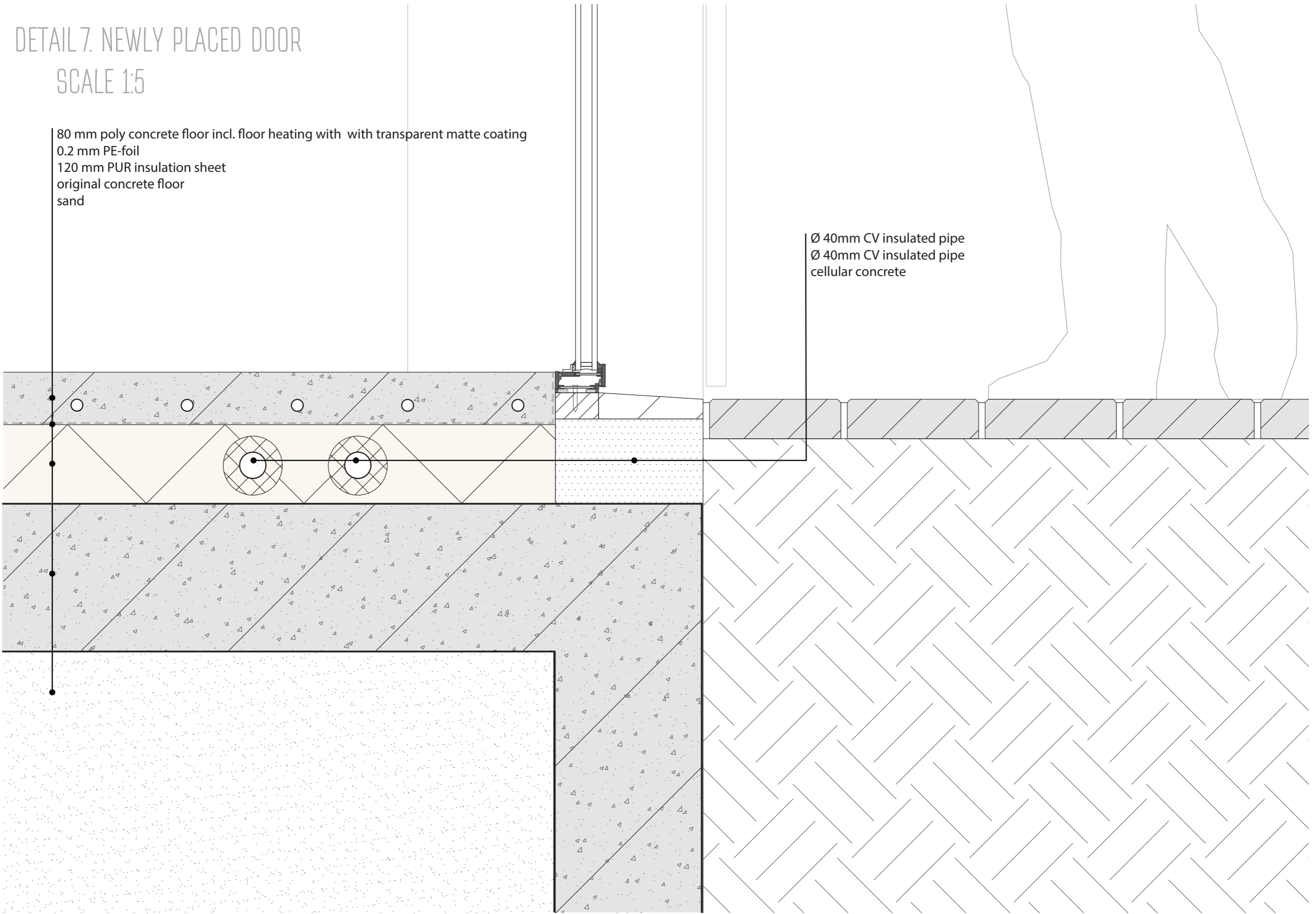
1. Ø 40mm CV insulated pipe
2. original steel sliding door
3. 20x20x6 cm abbeystone tiles

# DETAIL 7. NEWLY PLACED DOOR

SCALE 1:5

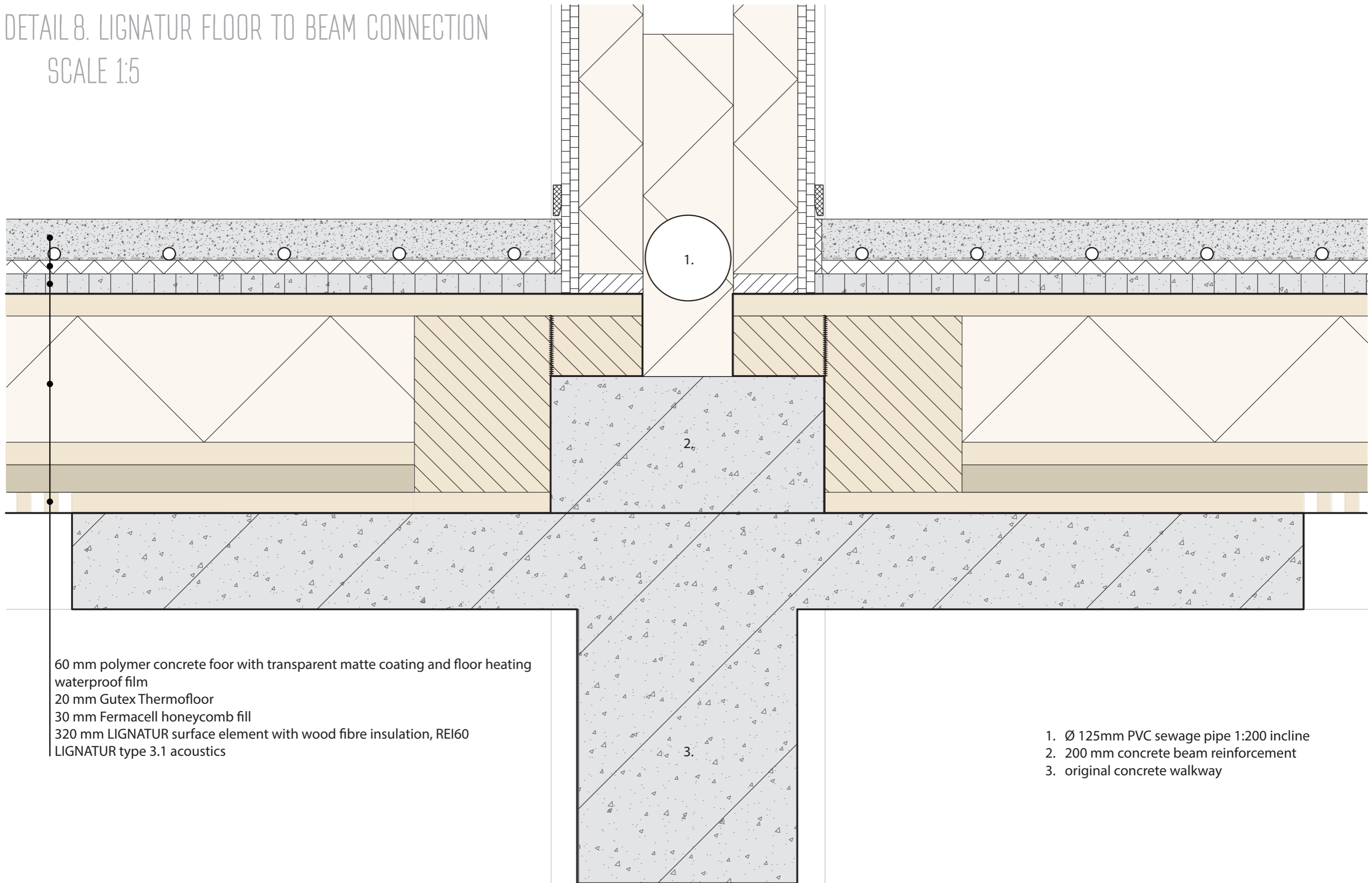
80 mm poly concrete floor incl. floor heating with transparent matte coating  
0.2 mm PE-foil  
120 mm PUR insulation sheet  
original concrete floor  
sand

Ø 40mm CV insulated pipe  
Ø 40mm CV insulated pipe  
cellular concrete



# DETAIL 8. LIGNATUR FLOOR TO BEAM CONNECTION

SCALE 1:5



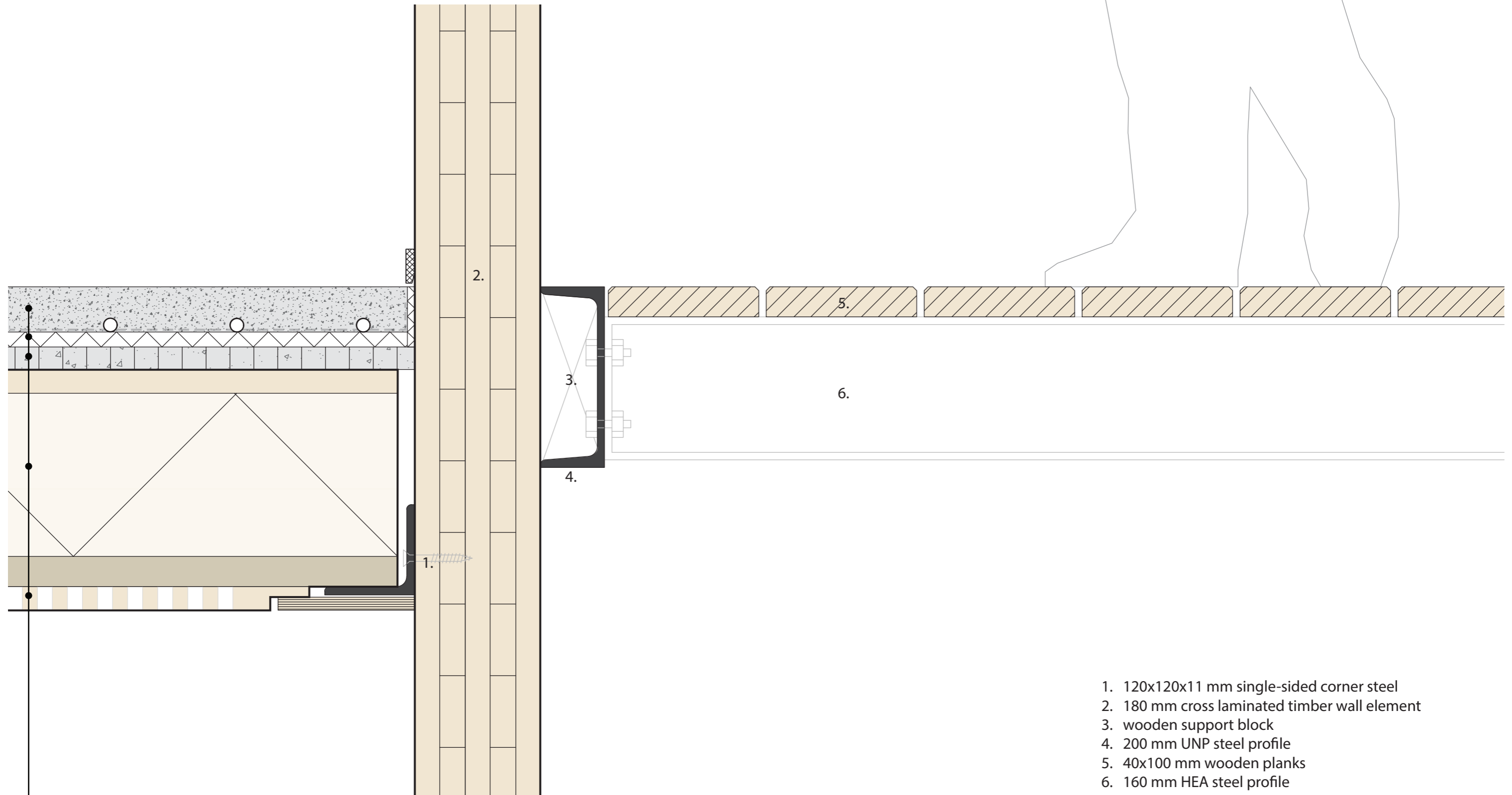
60 mm polymer concrete floor with transparent matte coating and floor heating  
waterproof film  
20 mm Gutex Thermofloor  
30 mm Fermacell honeycomb fill  
320 mm LIGNATUR surface element with wood fibre insulation, REI60  
LIGNATUR type 3.1 acoustics

1. Ø 125mm PVC sewage pipe 1:200 incline
2. 200 mm concrete beam reinforcement
3. original concrete walkway



# DETAIL 9. WALKWAY TO CROSS LAMINATED TIMBER WALL CONNECTION

SCALE 1:5



60 mm polymer concrete floor with transparent matte coating and floor heating  
waterproof film  
20 mm Gutex Thermofloor  
30 mm Fermacell honeycomb fill  
320 mm LIGNATUR acoustics element  
LIGNATUR type 3.1 acoustics

1. 120x120x11 mm single-sided corner steel
2. 180 mm cross laminated timber wall element
3. wooden support block
4. 200 mm UNP steel profile
5. 40x100 mm wooden planks
6. 160 mm HEA steel profile