

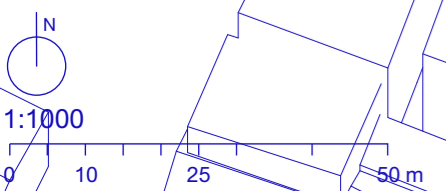
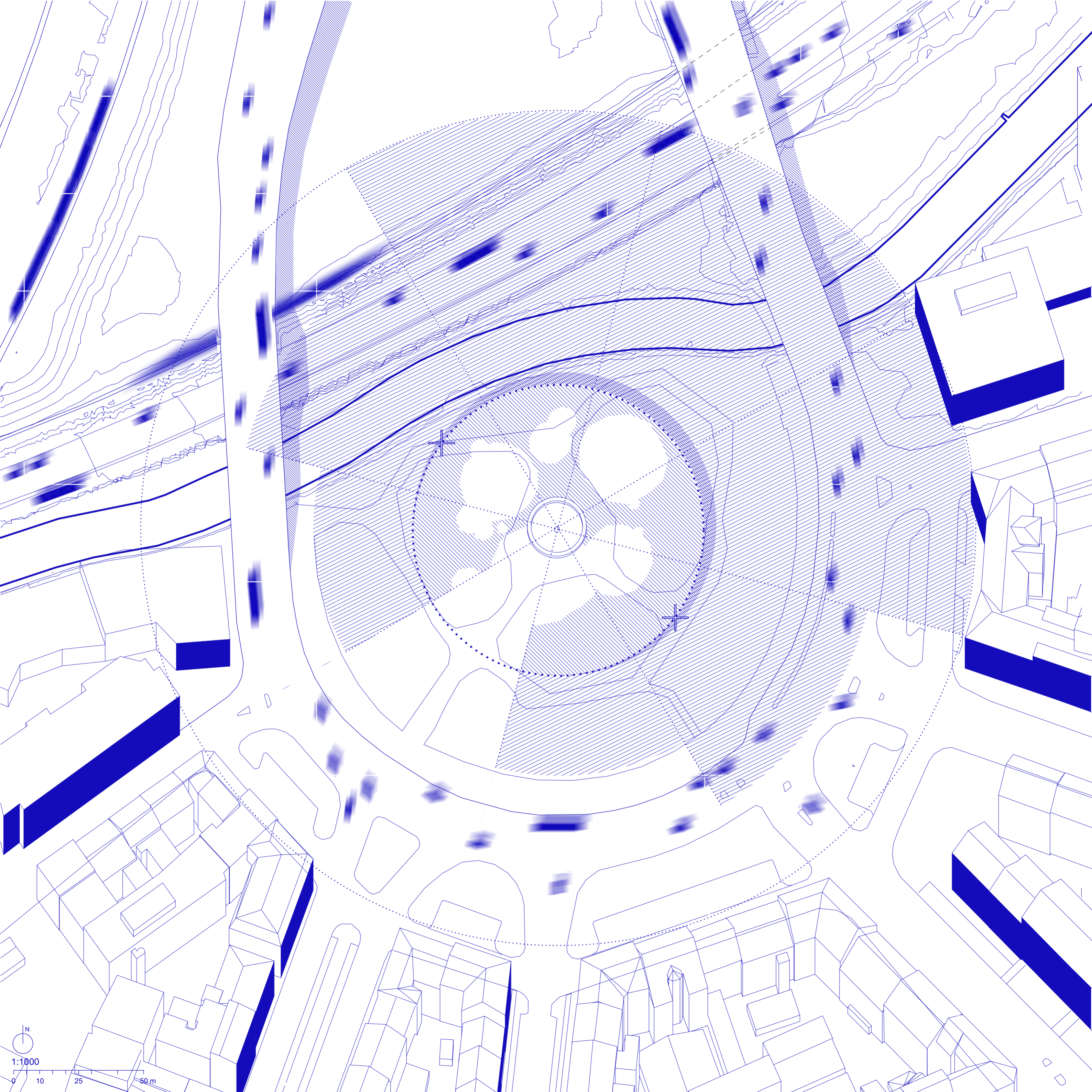


Legend:

- Migrant camp grounds
- Programmatic (Immanent business, social services, collective ownership)

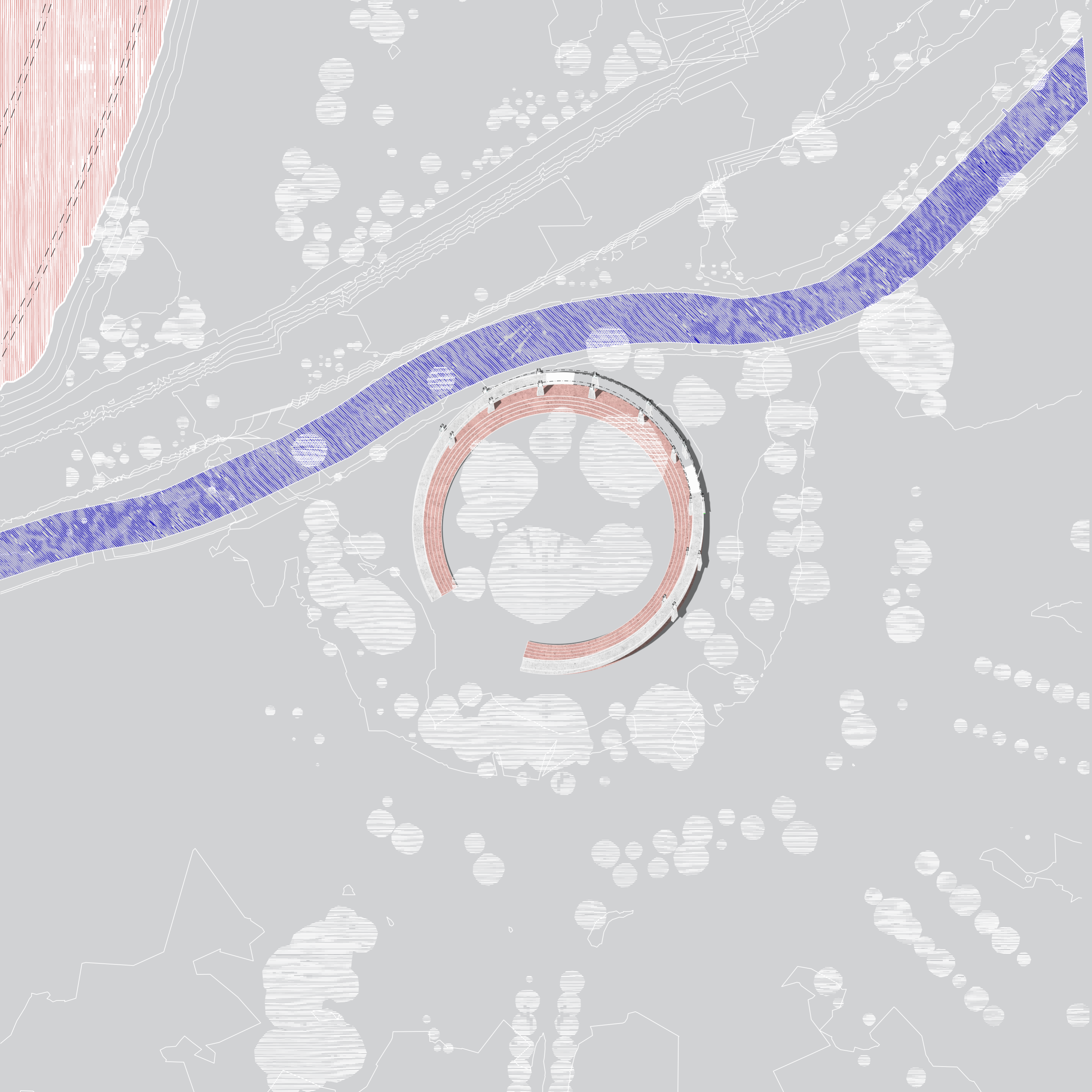
Scale: 1:2500

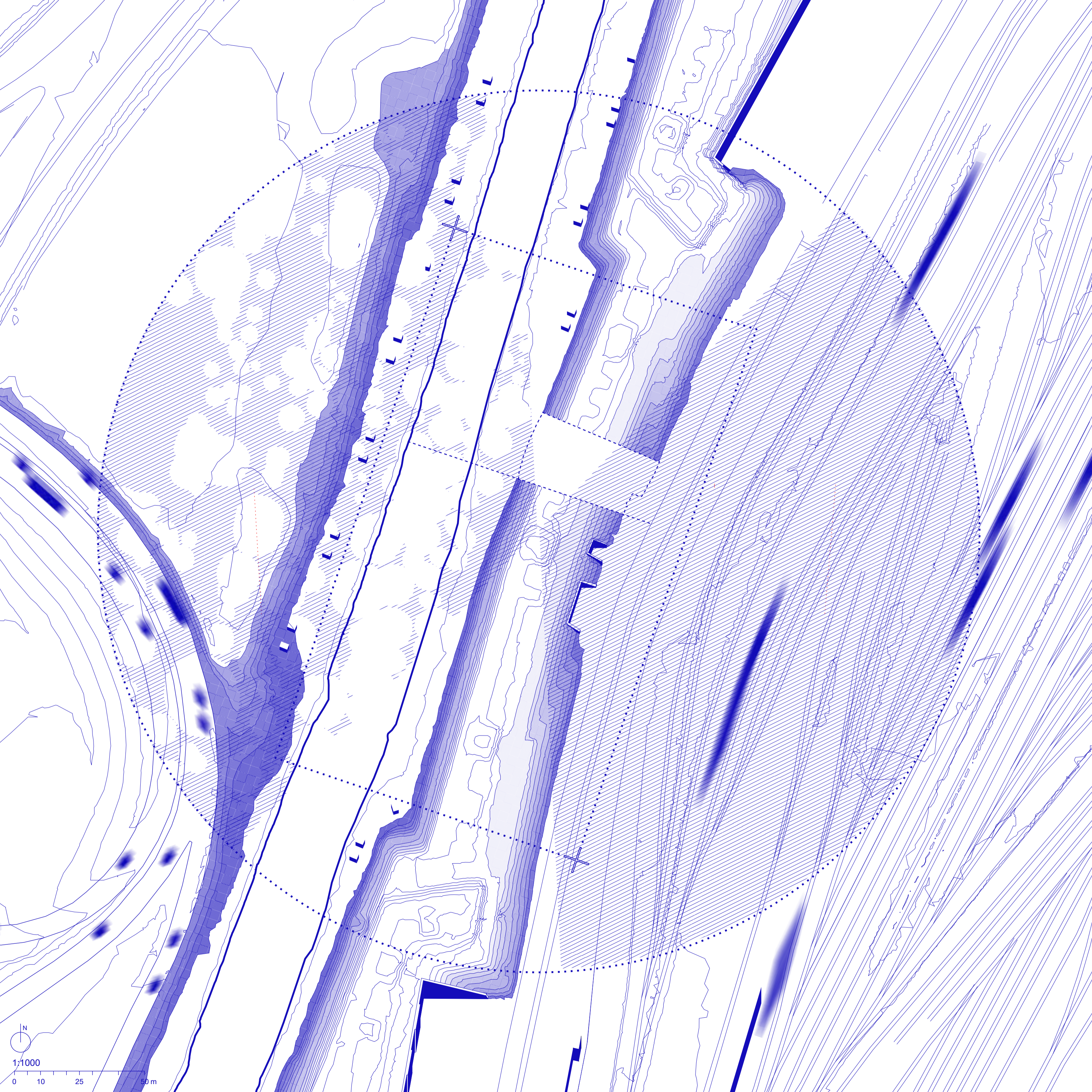
0 50 100 m



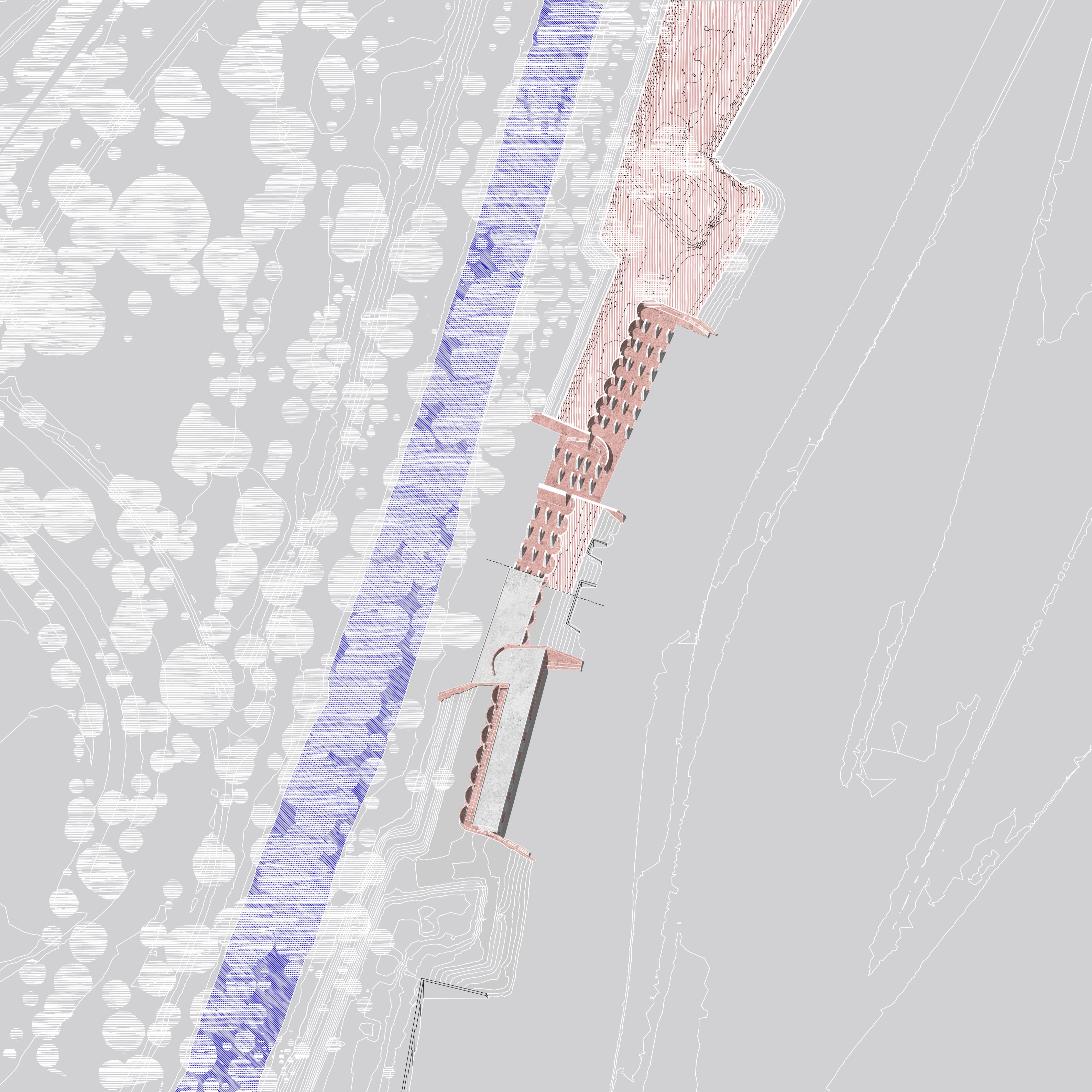
1:1000

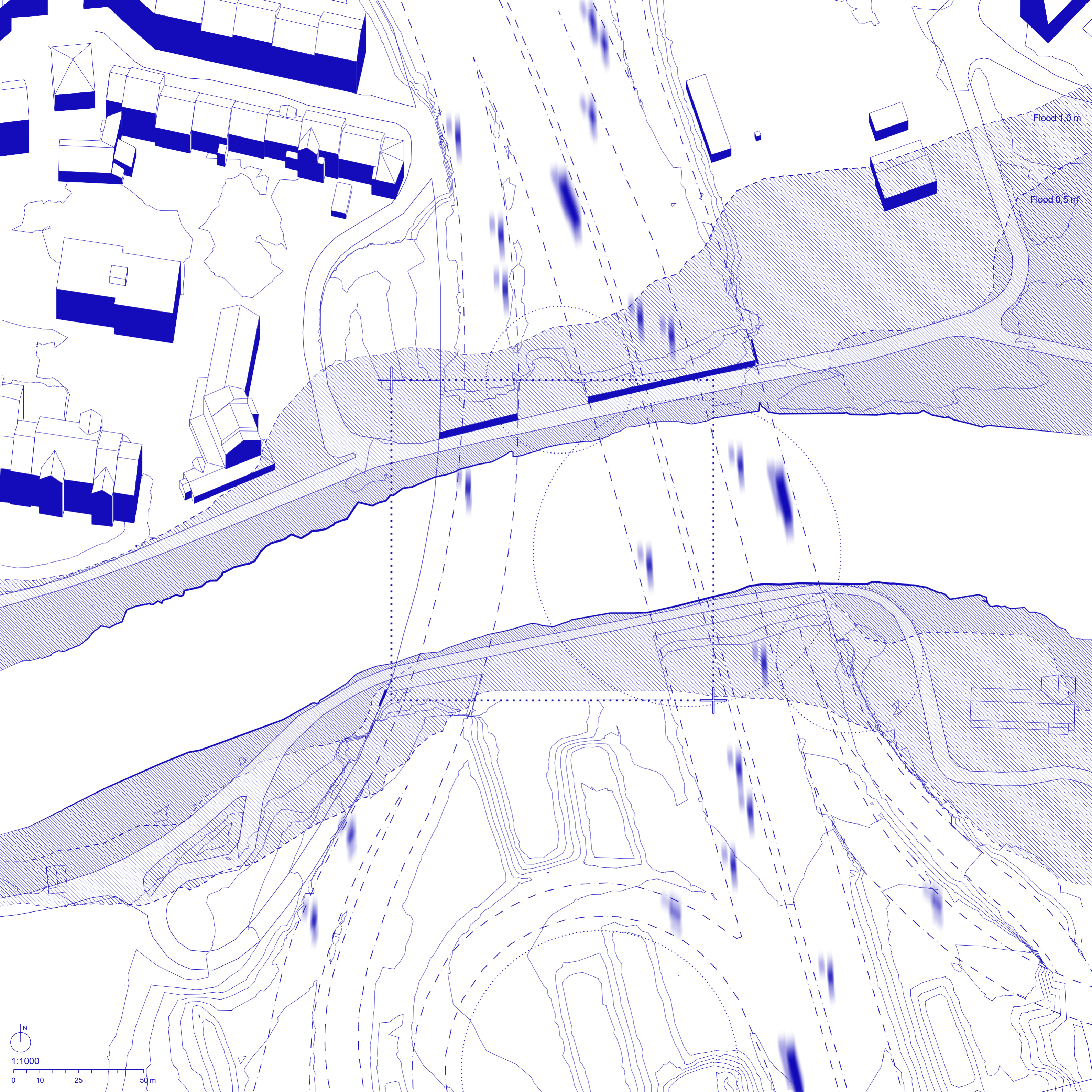
0 10 25 50m





1:1000
0 10 25 50 m



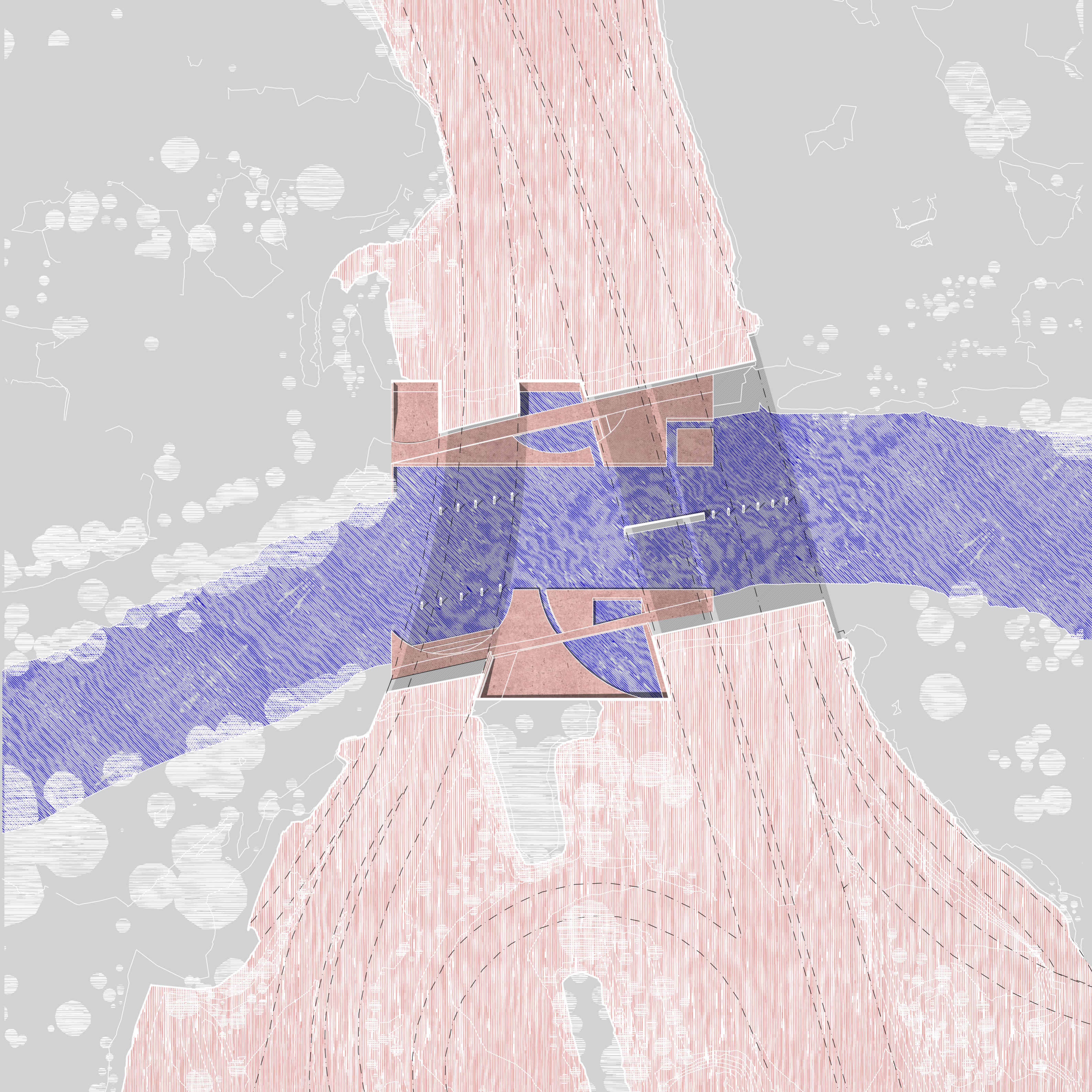


Flood 1,0 m

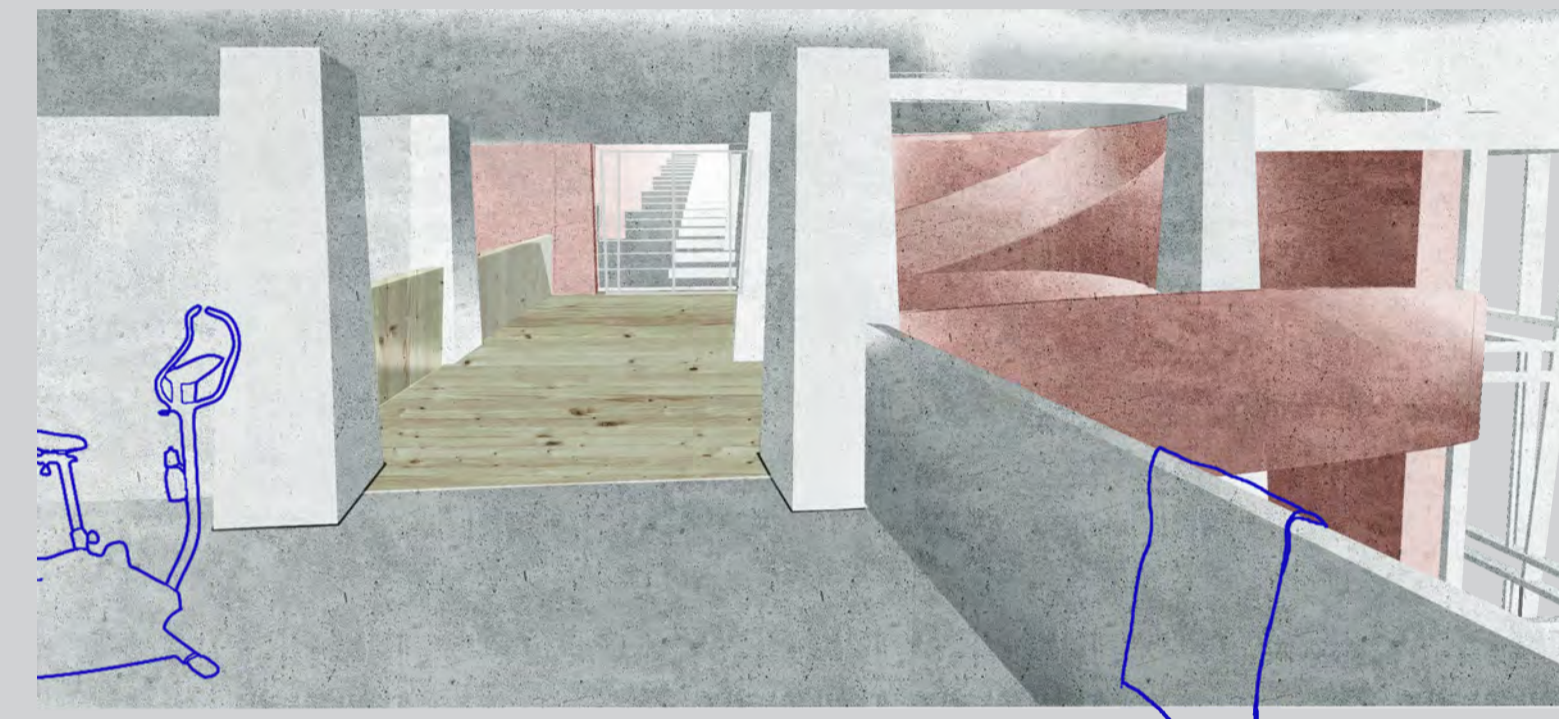
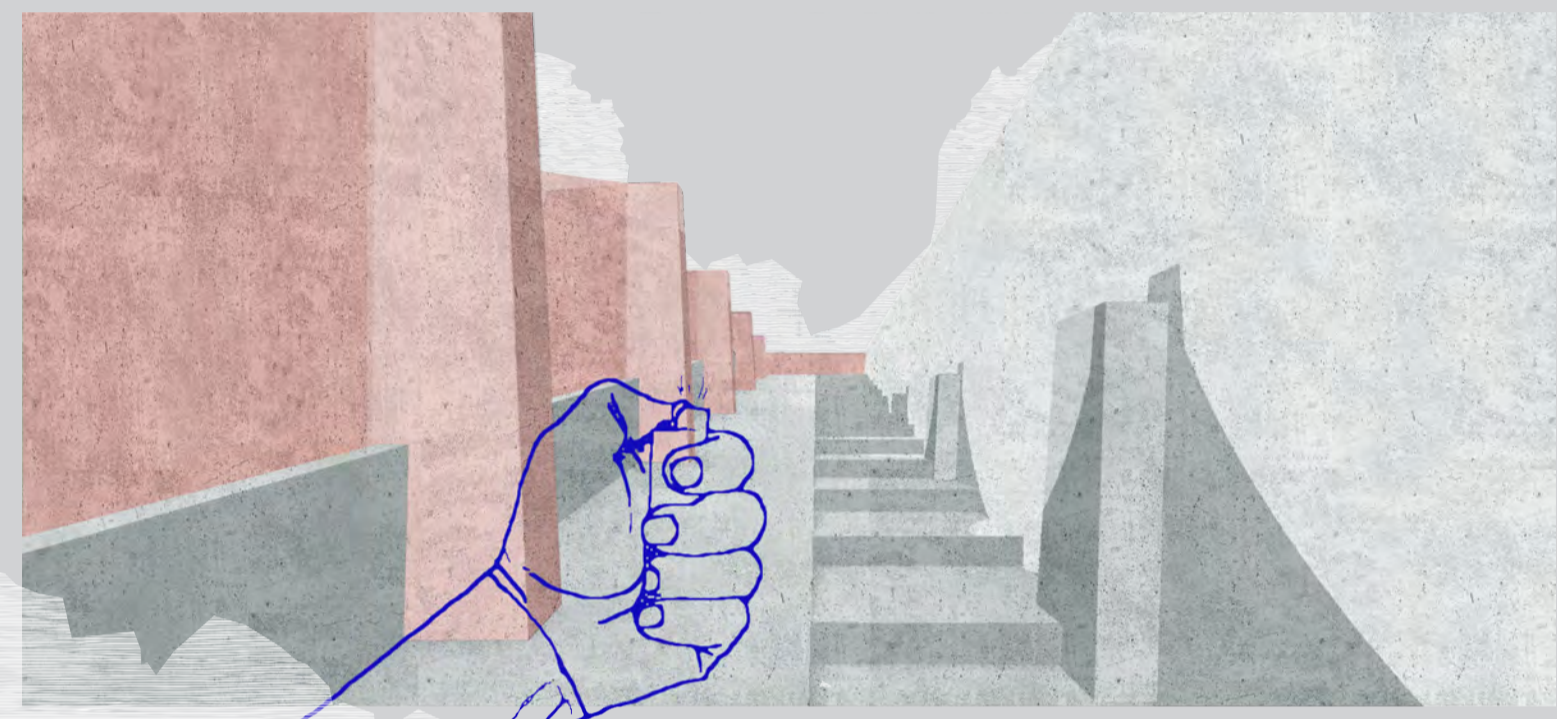
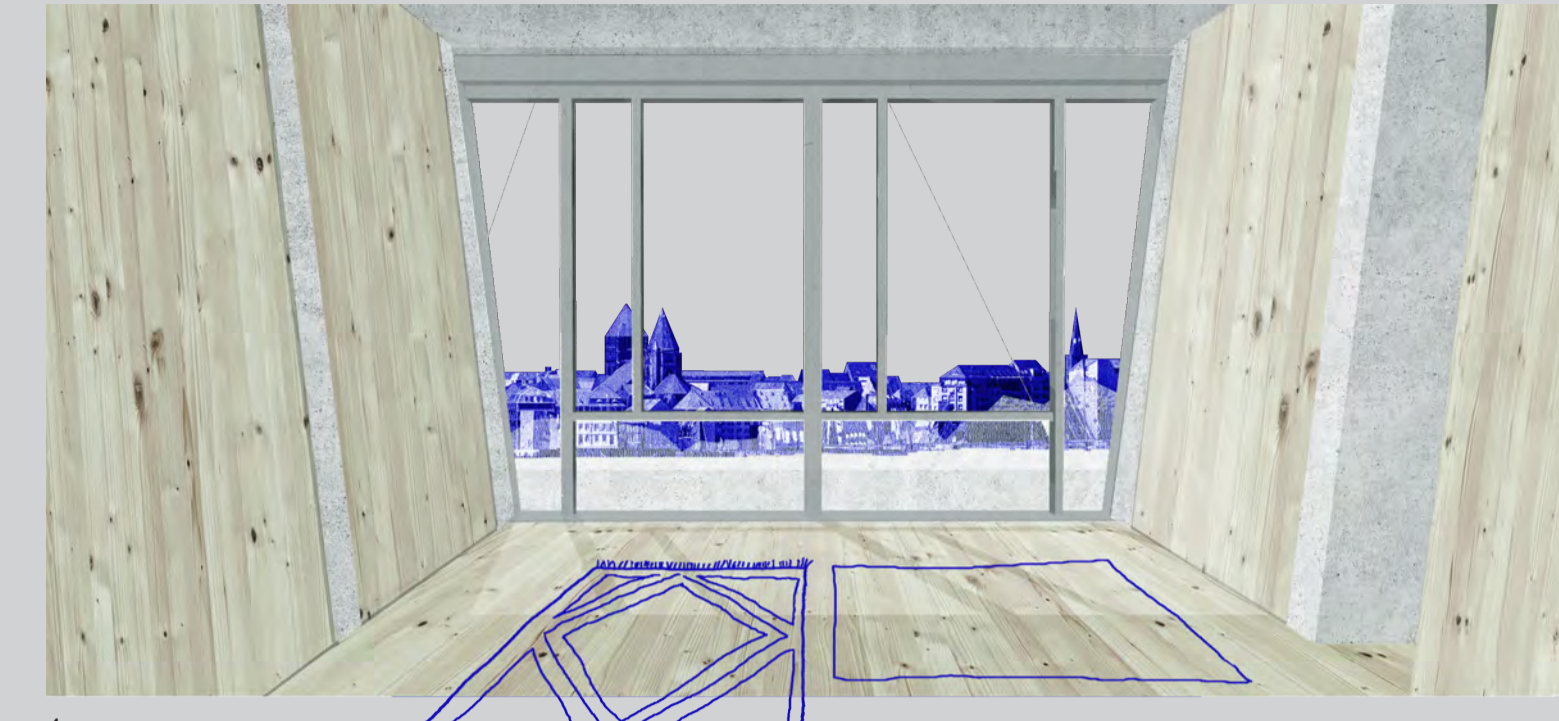
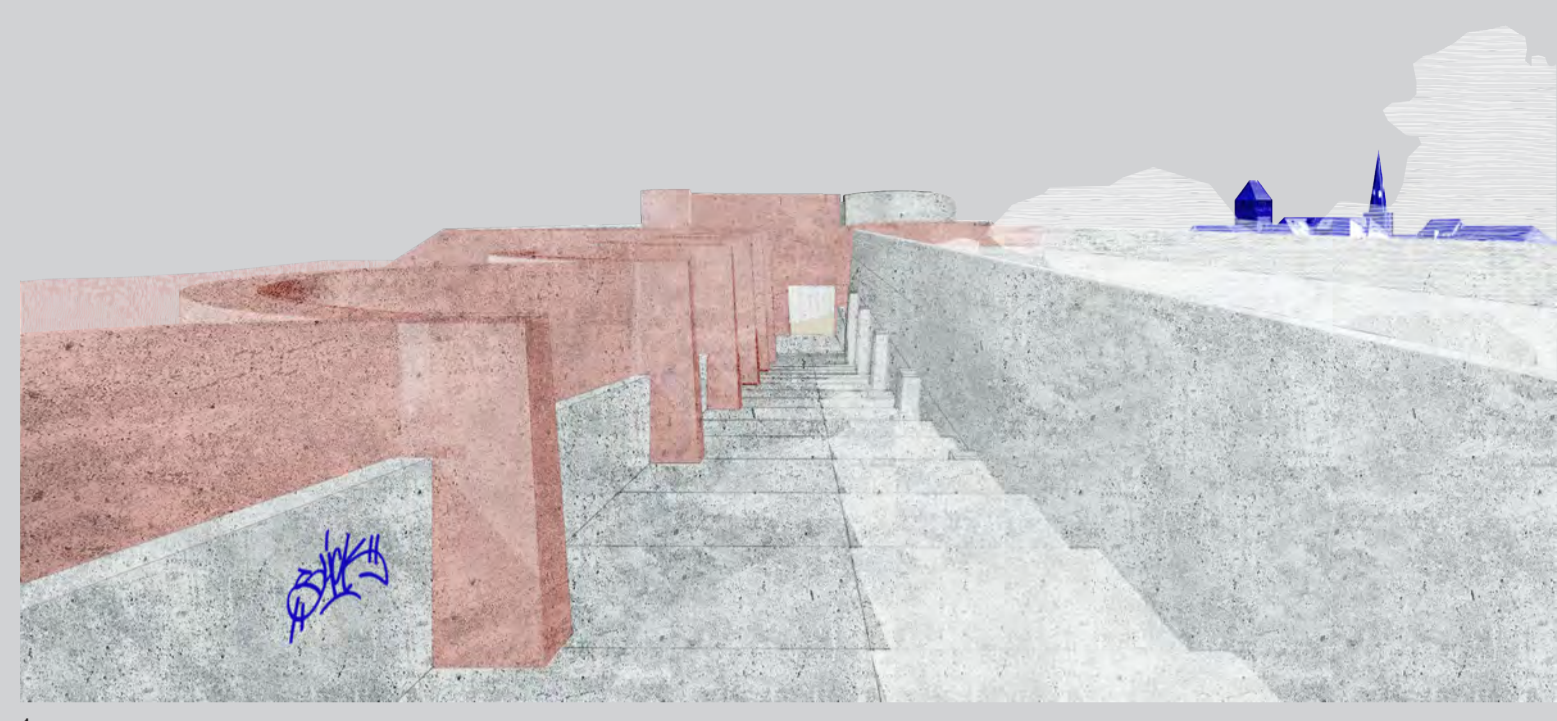
Flood 0,5 m



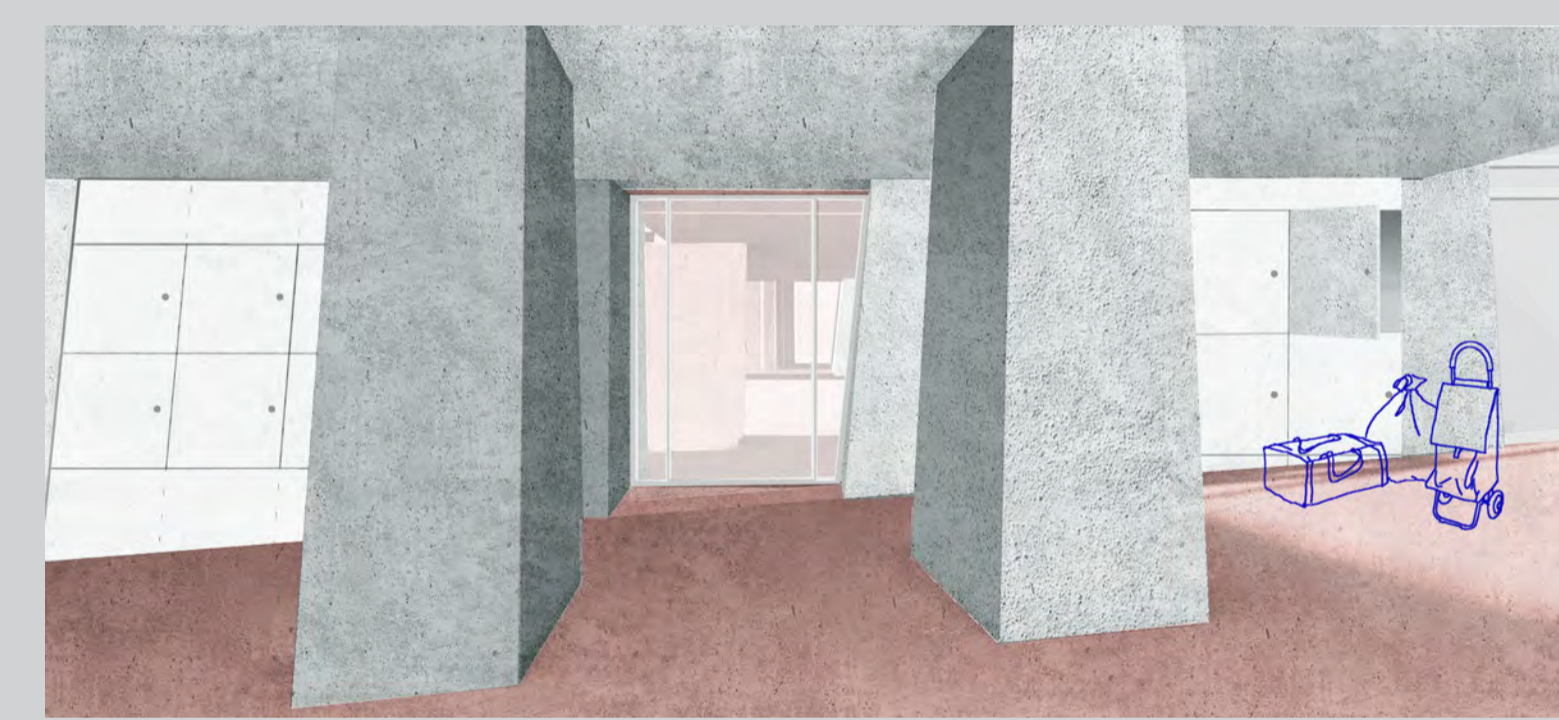
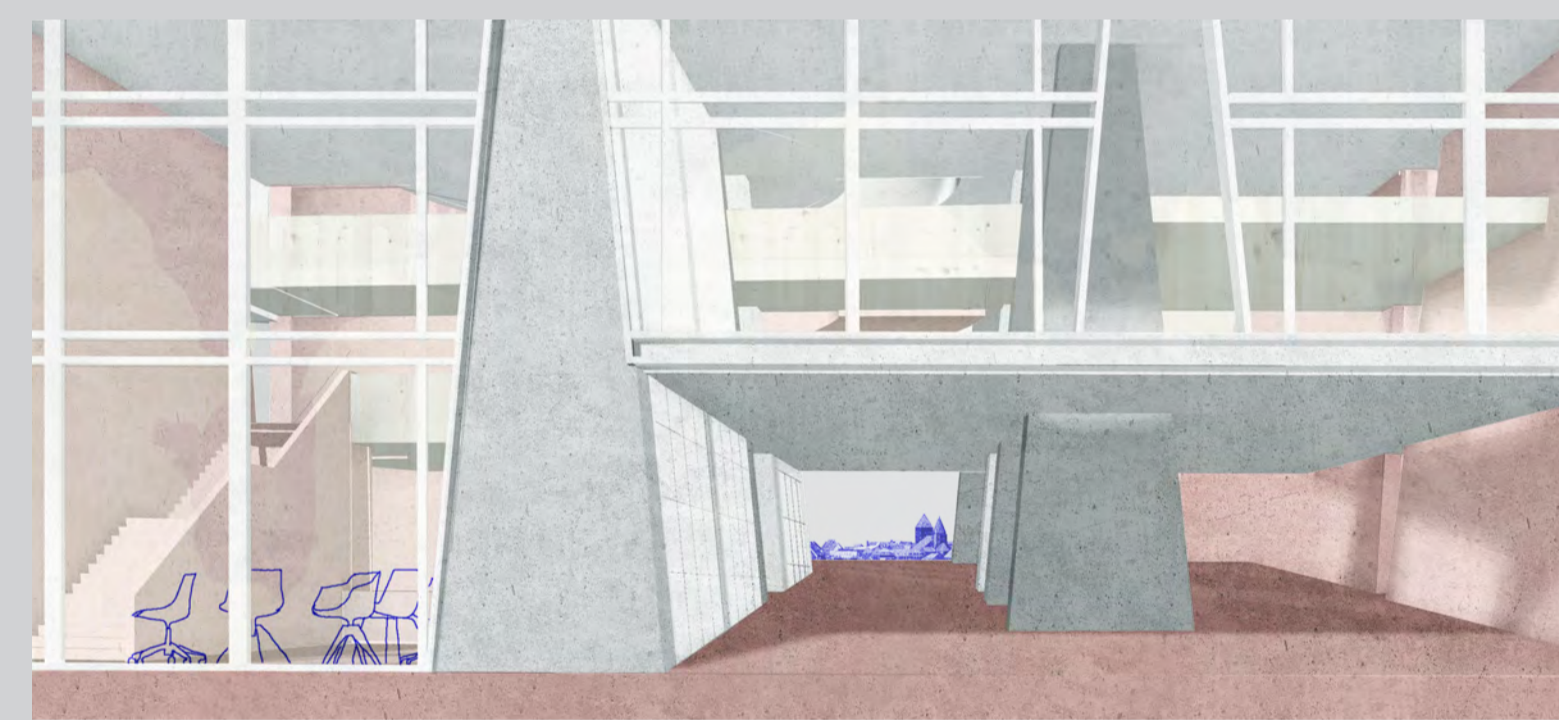
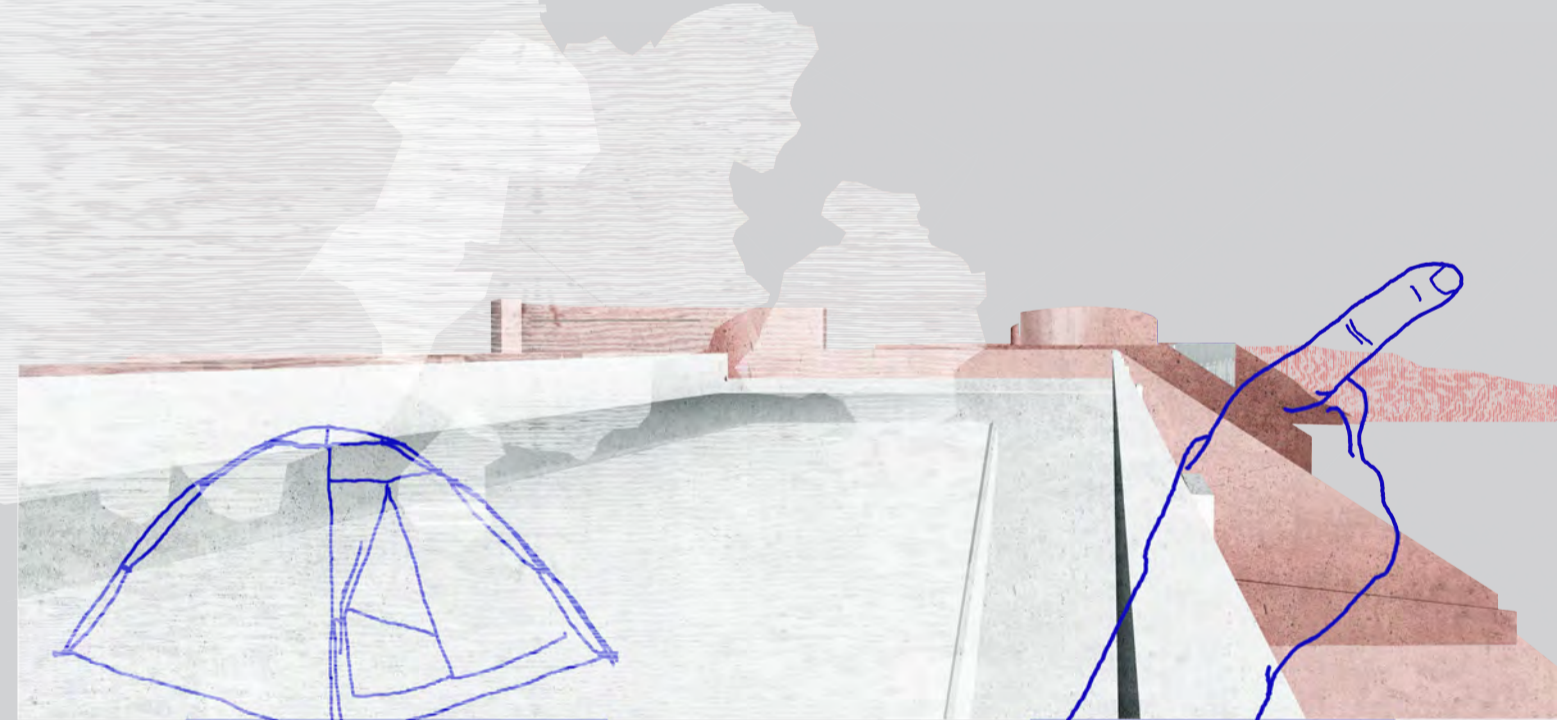
1:1000
0 10 25 50 m



Insider

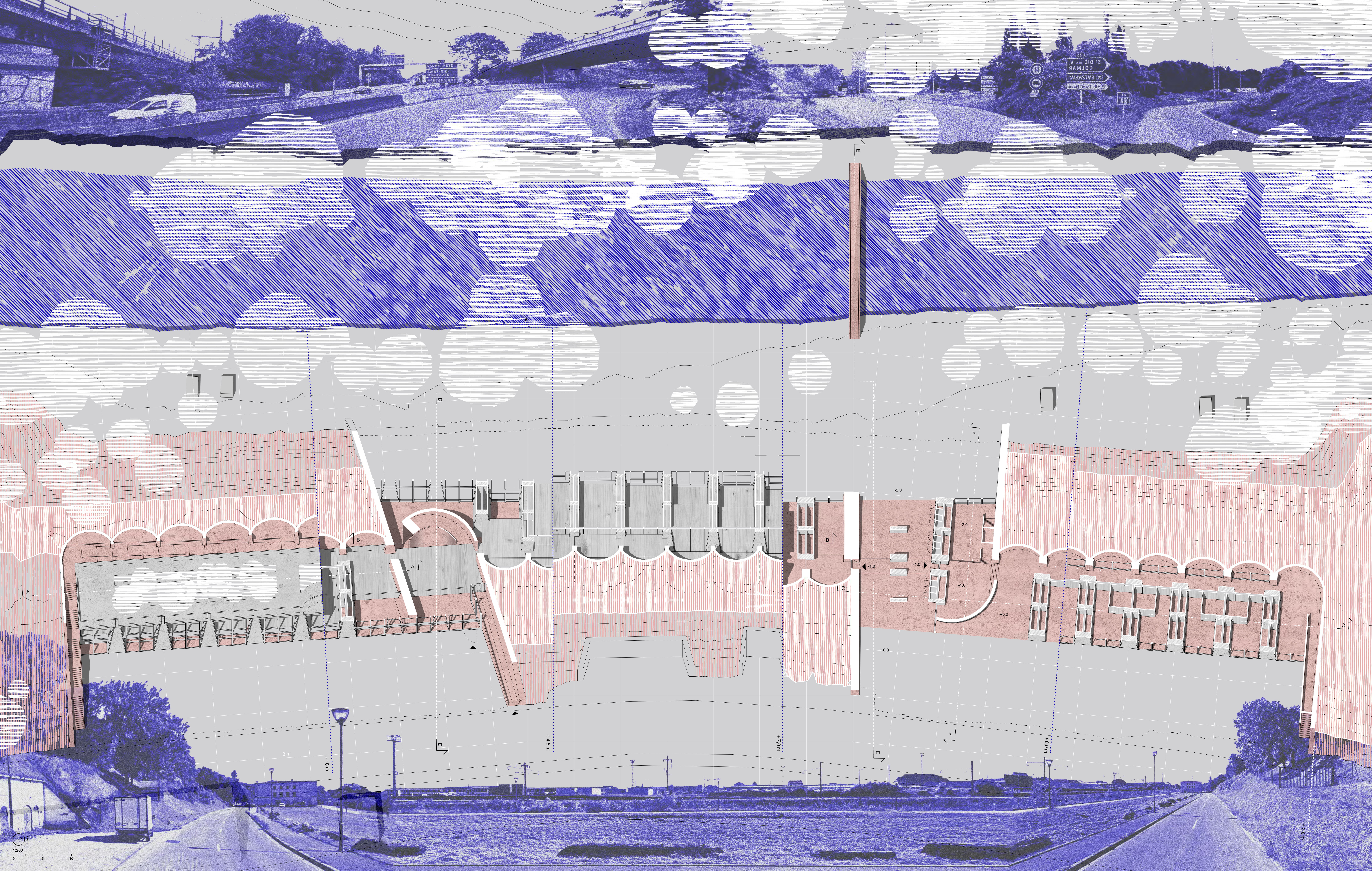


Outsider



Section A-A
Section B-B
Section C-C

1:200
0 1 5 10m



1:200
0 1 5 10m

8m

+10.0

+4.5m

+7.0

+0.0

+0.0

+2.00

A

B

A

B

B

C

C

D

E

E

E

F

F

-2.0

-2.0

-1.0

-1.0

-1.0

-1.0

-1.0

-1.0

-1.0

-1.0

-1.0

-1.0

-1.0

-1.0

-1.0

-1.0

-1.0

-1.0

-1.0

-1.0

-1.0

-1.0

-1.0

-1.0

-1.0

-1.0

-1.0

-1.0

-1.0

-1.0

-1.0

-1.0

-1.0

-1.0

-1.0

-1.0

-1.0

-1.0

-1.0

-1.0

-1.0

-1.0

-1.0

-1.0

-1.0

-1.0

-1.0

-1.0

-1.0

-1.0

-1.0

-1.0

-1.0

-1.0

-1.0

-1.0

-1.0

-1.0

-1.0

-1.0

-1.0

-1.0

-1.0

-1.0

-1.0

-1.0

-1.0

-1.0

-1.0

-1.0

-1.0

-1.0

-1.0

-1.0

-1.0

-1.0

-1.0

-1.0

-1.0

-1.0

-1.0

-1.0

-1.0

-1.0

-1.0

-1.0

-1.0

-1.0

-1.0

-1.0

-1.0

-1.0

-1.0

-1.0

-1.0

-1.0

-1.0

-1.0

-1.0

-1.0

-1.0

-1.0

-1.0

-1.0

-1.0

-1.0

-1.0

-1.0

-1.0

-1.0

-1.0

-1.0

-1.0

-1.0

-1.0

-1.0

-1.0

-1.0

-1.0

-1.0

-1.0

-1.0

-1.0

-1.0

-1.0

-1.0

-1.0

-1.0

-1.0

-1.0

-1.0

-1.0

-1.0

-1.0

-1.0

-1.0

-1.0

-1.0

-1.0

-1.0

-1.0

-1.0

-1.0

-1.0

-1.0

-1.0

-1.0

-1.0

-1.0

-1.0

-1.0

-1.0

-1.0

-1.0

-1.0

-1.0

-1.0

-1.0

-1.0

-1.0

-1.0

-1.0

-1.0

-1.0

-1.0

-1.0

-1.0

-1.0

-1.0

-1.0

-1.0

-1.0

-1.0

-1.0

-1.0

-1.0

-1.0

-1.0

-1.0

-1.0

-1.0

-1.0

-1.0

-1.0

-1.0

-1.0

-1.0

-1.0

-1.0

-1.0

-1.0

-1.0

-1.0

-1.0

-1.0

-1.0

-1.0

-1.0

-1.0

-1.0

-1.0

-1.0

-1.0

-1.0

-1.0

-1.0

-1.0

-1.0

-1.0

-1.0

-1.0

-1.0

-1.0

-1.0

-1.0

-1.0

-1.0

-1.0

-1.0

-1.0

-1.0

-1.0

-1.0

-1.0

-1.0

-1.0

-1.0

-1.0

-1.0

-1.0

-1.0

-1.0

-1.0

-1.0

-1.0

-1.0

-1.0

-1.0

-1.0

-1.0

-1.0

-1.0

-1.0

-1.0

-1.0

-1.0

-1.0

-1.0

-1.0

-1.0

-1.0

-1.0

-1.0

-1.0

-1.0

-1.0

-1.0

-1.0

-1.0

-1.0

-1.0

-1.0

-1.0

-1.0

-1.0

-1.0

-1.0

-1.0

-1.0

-1.0

-1.0

-1.0

-1.0

-1.0

-1.0

-1.0

-1.0

-1.0

-1.0

-1.0

-1.0

-1.0

-1.0

-1.0

-1.0

-1.0

-1.0

-1.0

-1.0

-1.0

-1.0

-1.0

-1.0

-1.0

-1.0

-1.0

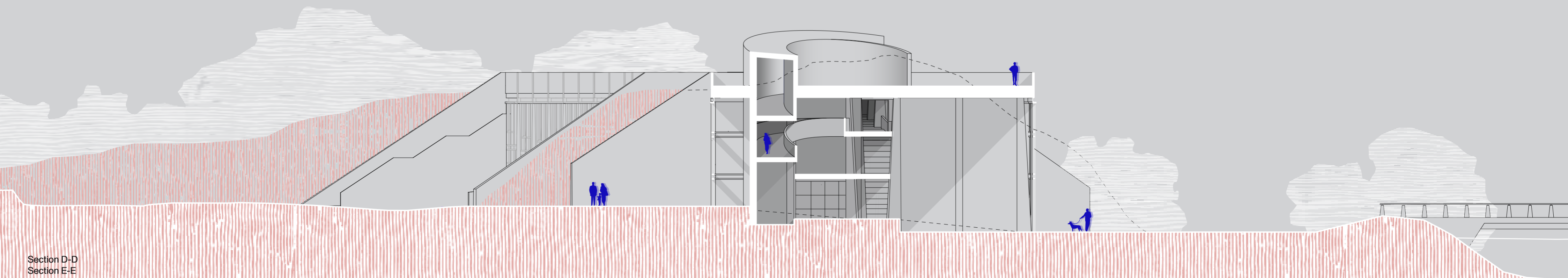
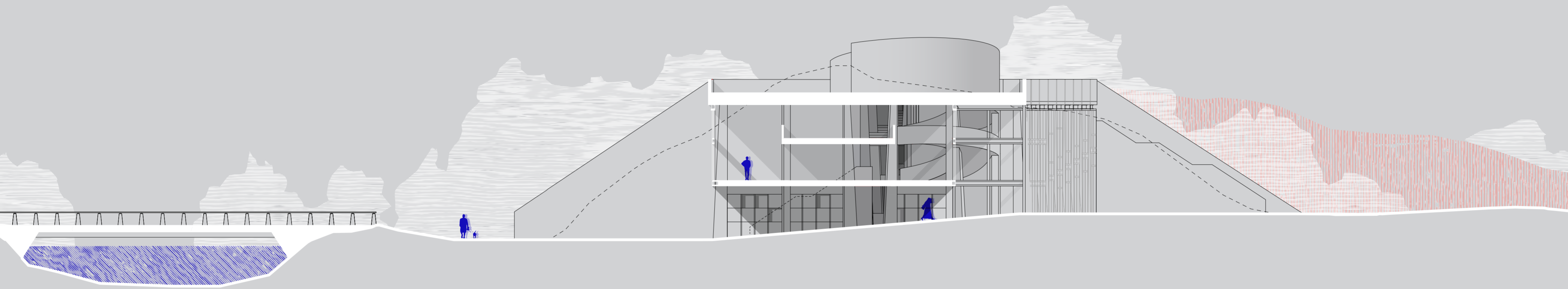
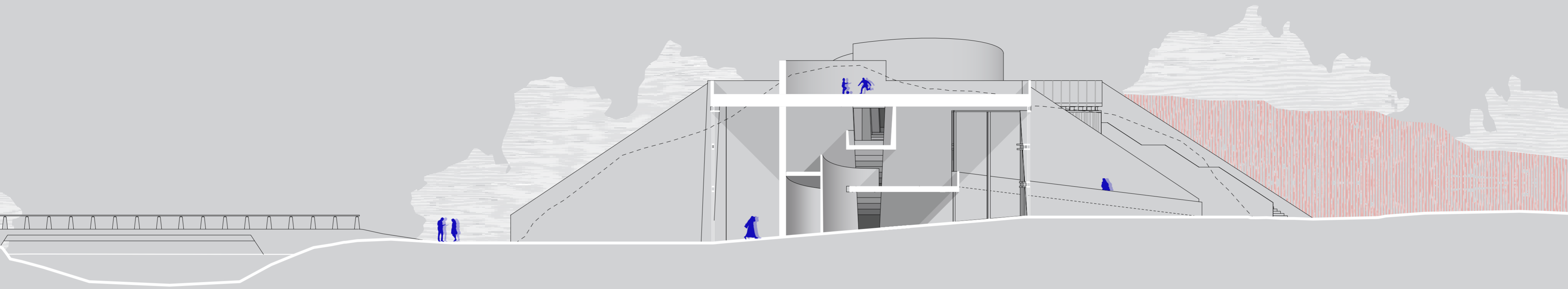
-1.0

-1.0

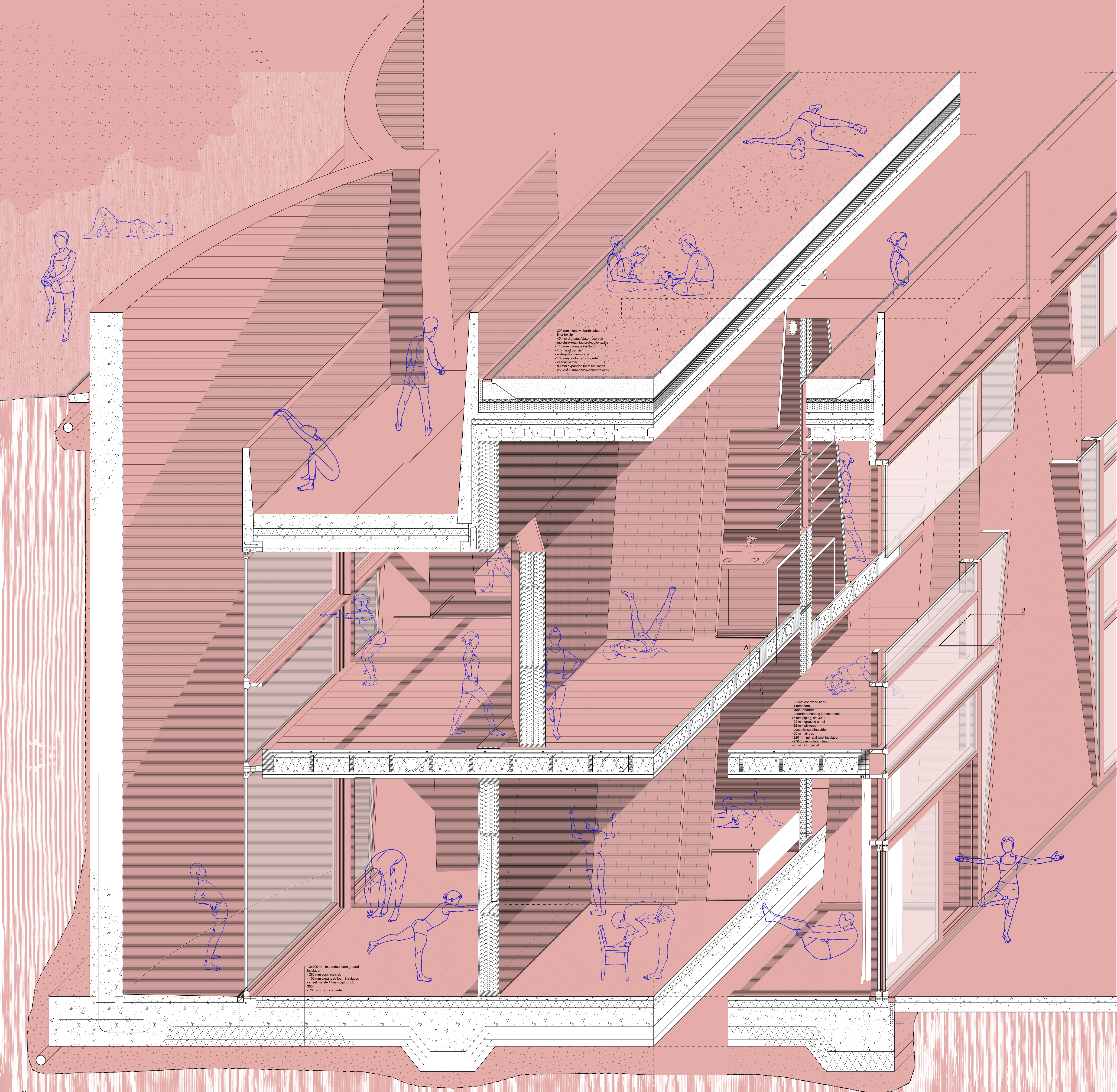
-1.0

-1.0

-1.0



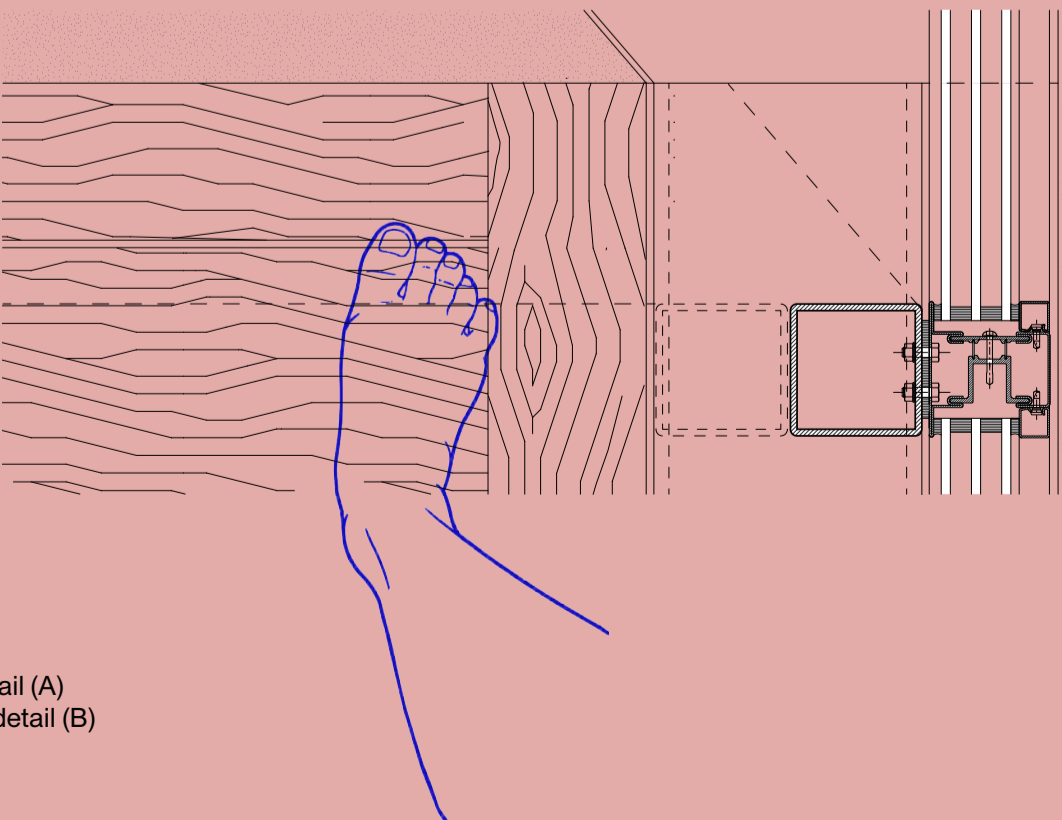
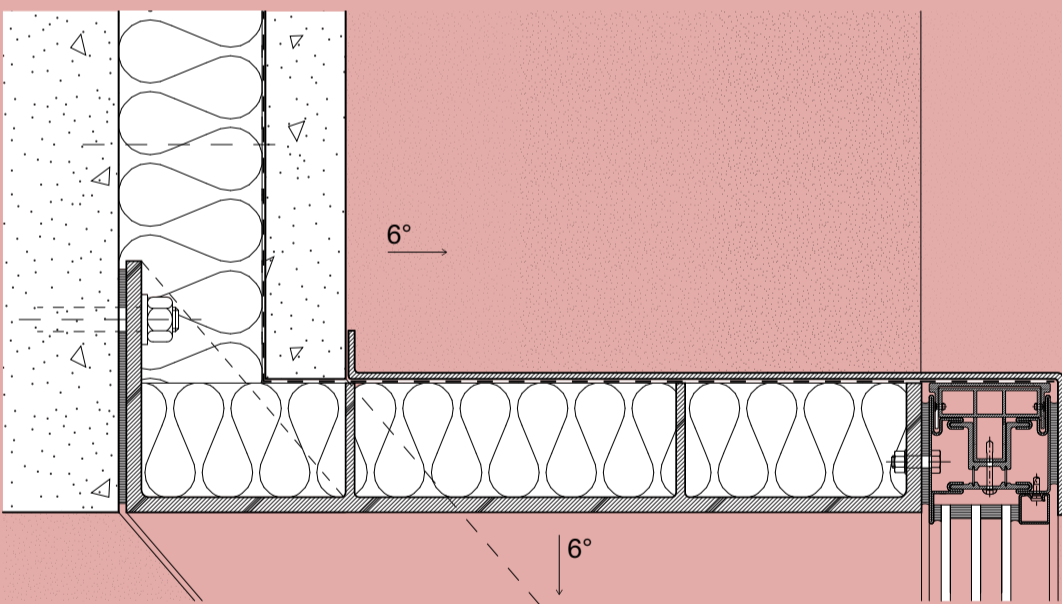
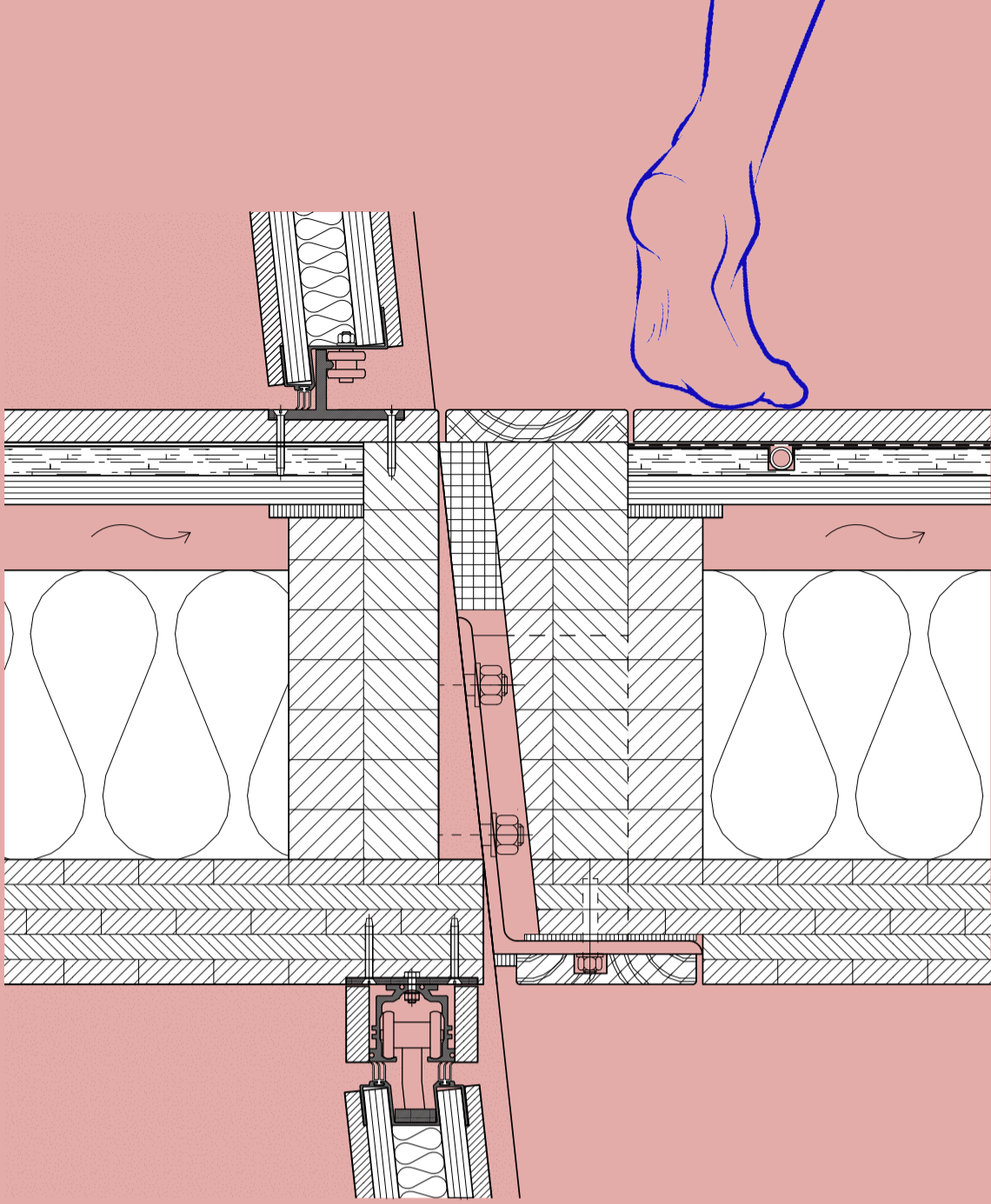
Section D-D
Section E-E
Section F-F
1:200
0 1 5 10m



- 300 mm intensive earth substrate
- fiber textile
- 40 mm drainage/venter reservoir
- moisture-retaining protective textile
- 110 mm drainage insulation
- 1 mm root barrier
- waterproof membrane
- 100 mm reinforced concrete
- vapour barrier
- 60 mm expanded foam insulation
- 250x1200 mm hollow concrete deck

- 25 mm ash wood floor
- 1 mm foam
- vapour barrier
- underfloor heating (sheet metal, 17 mm piping, c/c 300)
- 22 mm grooved panel
- 25 mm plywood
- acoustic isolating strip
- 50 mm air gap
- 220 mm mineral wool insulation
- 270x60 mm glulam beam
- 95 mm CLT panel

- 3x100 mm expanded foam ground insulation
- 280 mm concrete slab
- 100 mm expanded foam insulation
- sheet metal+ 17 mm piping, c/c 300
- 70 mm in situ concrete



Vertical detail (A)
Horizontal detail (B)
1:5









