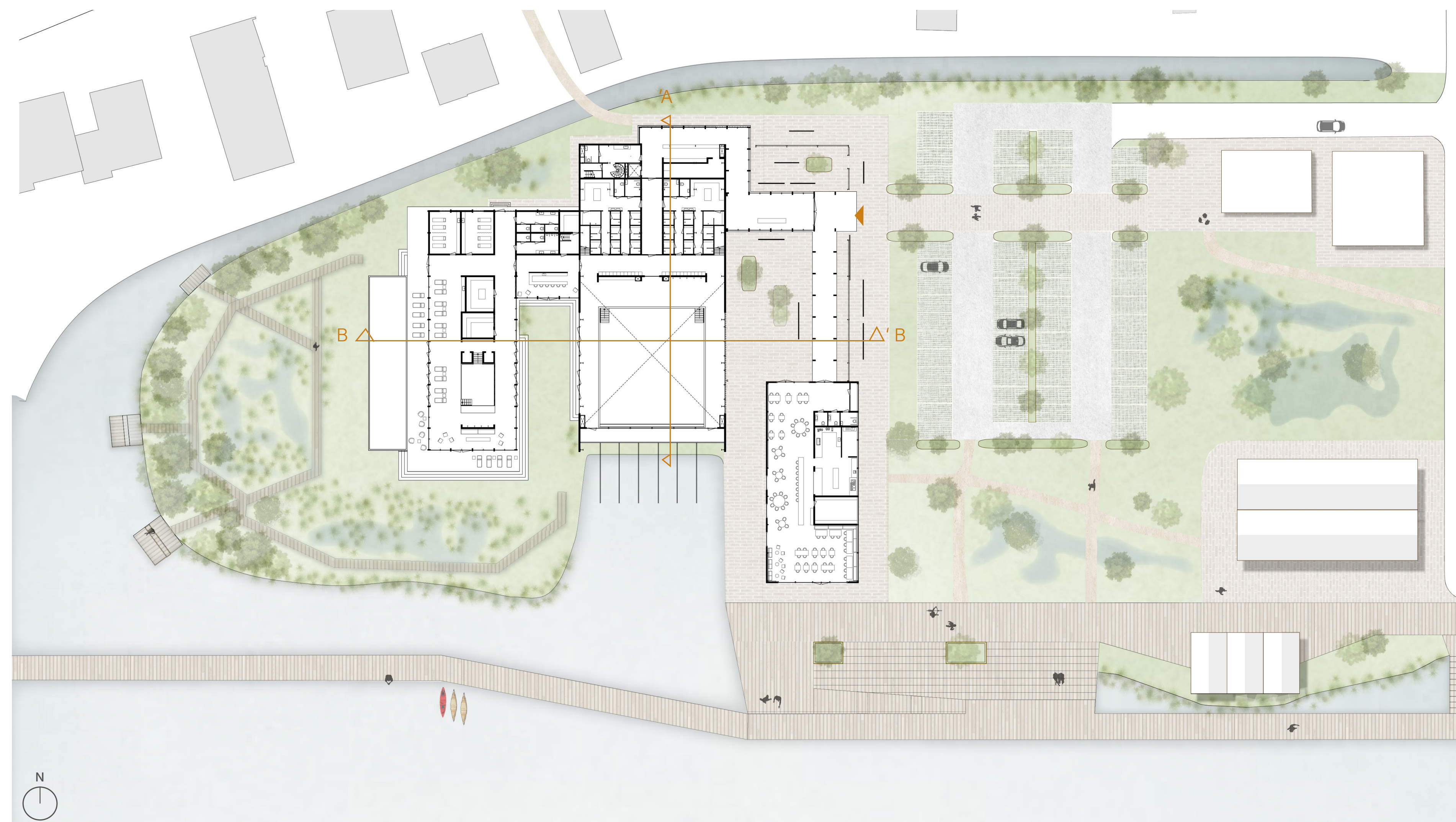


Tides of Change

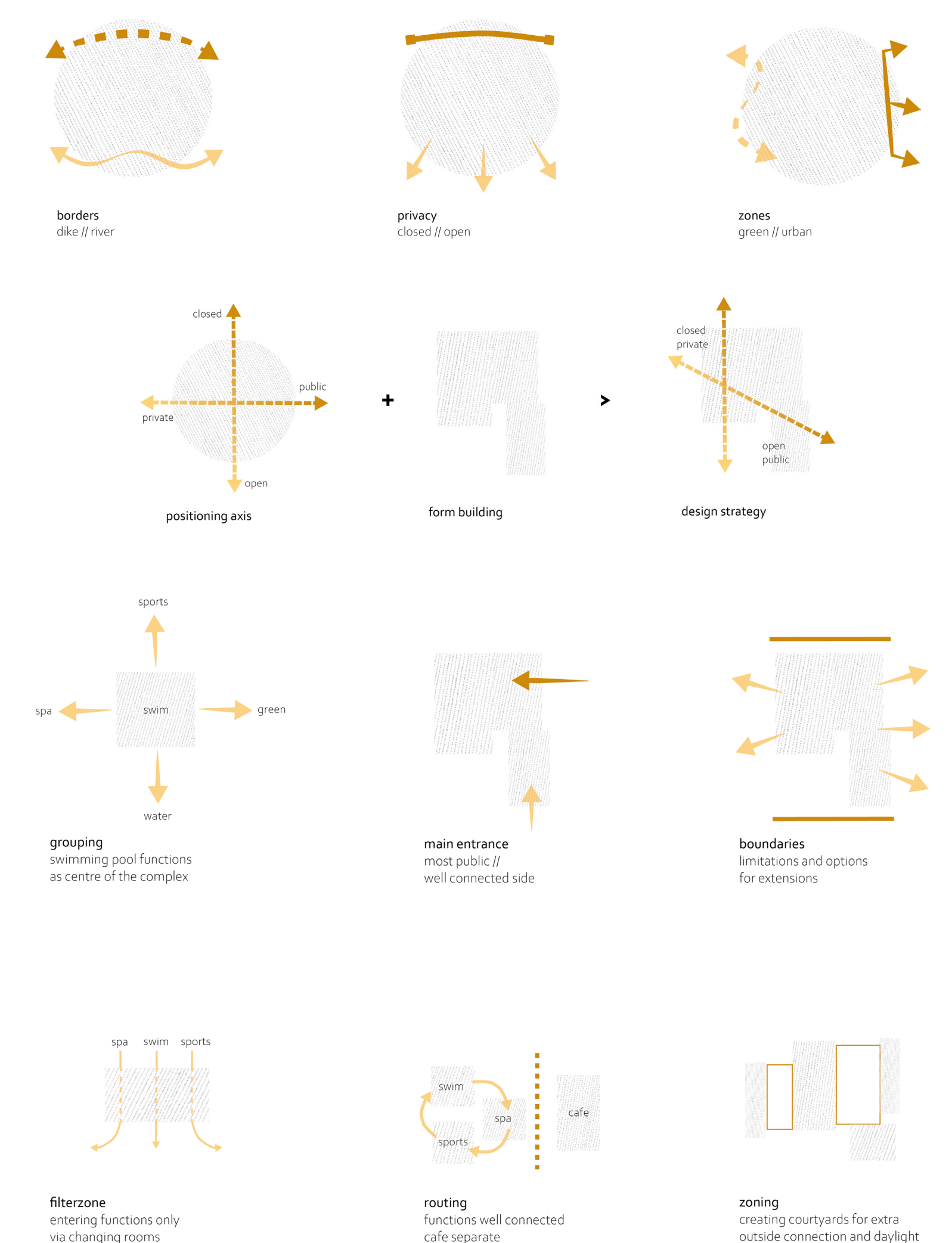
Reviving maritime **heritage** for a water-connected **future**

Delta Shipyard

Masterplan 1:400



Design strategies



Design values



own character

architectural reference to old stoepwoningen
co - living, shared spaces
extra space for small businesses
creating a small village next to the Merwede river



nature

protecting the floodplain as much as possible
preservation of nature and room for the river
green spaces as connectors within the community



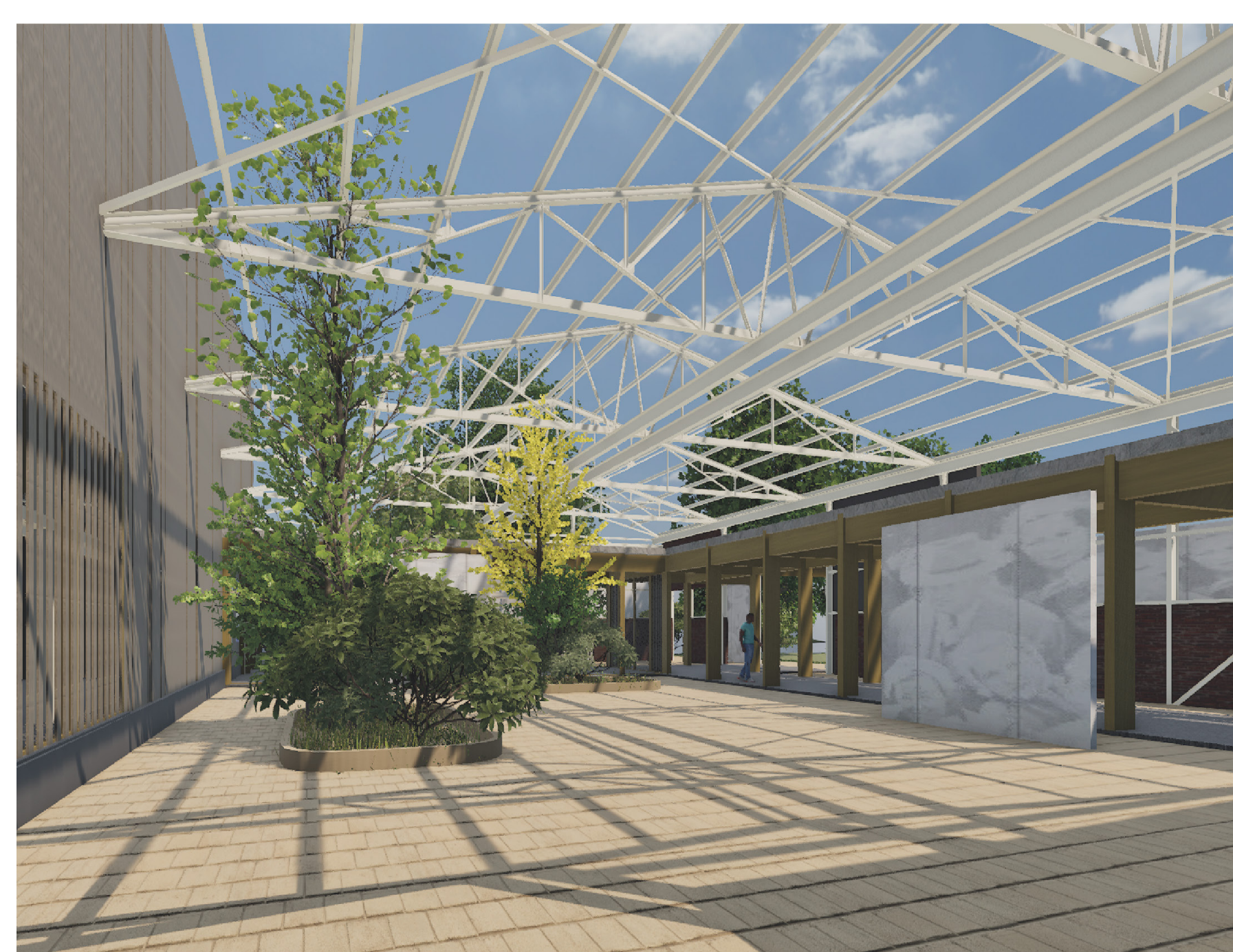
history

Watertower as historical icon of Sliedrecht
bringing back historical Gantel
Delta wharf recalls the maritime past of Sliedrecht



water connection

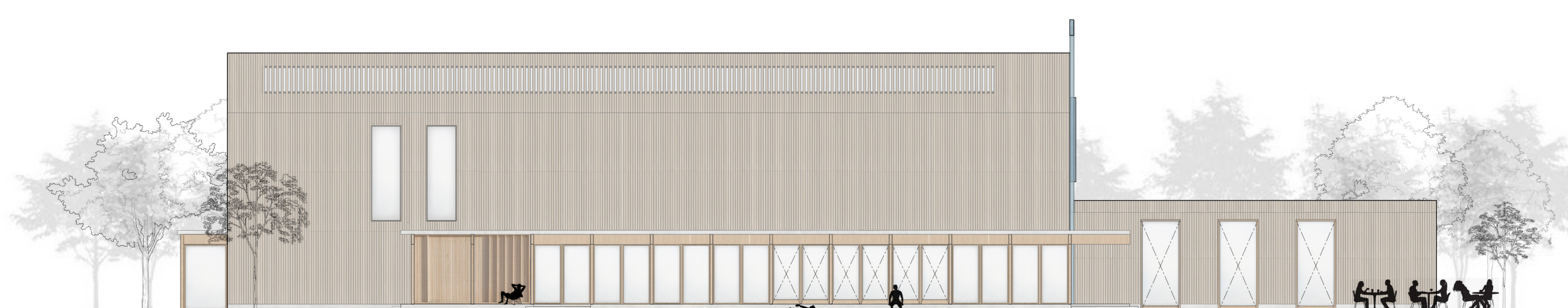
restoring the connection by increasing water related activities
Deltawharf with a new water related function
making the water accessible for Sliedrechters



West, north, east and south facade

Elevations 1:200

west facade

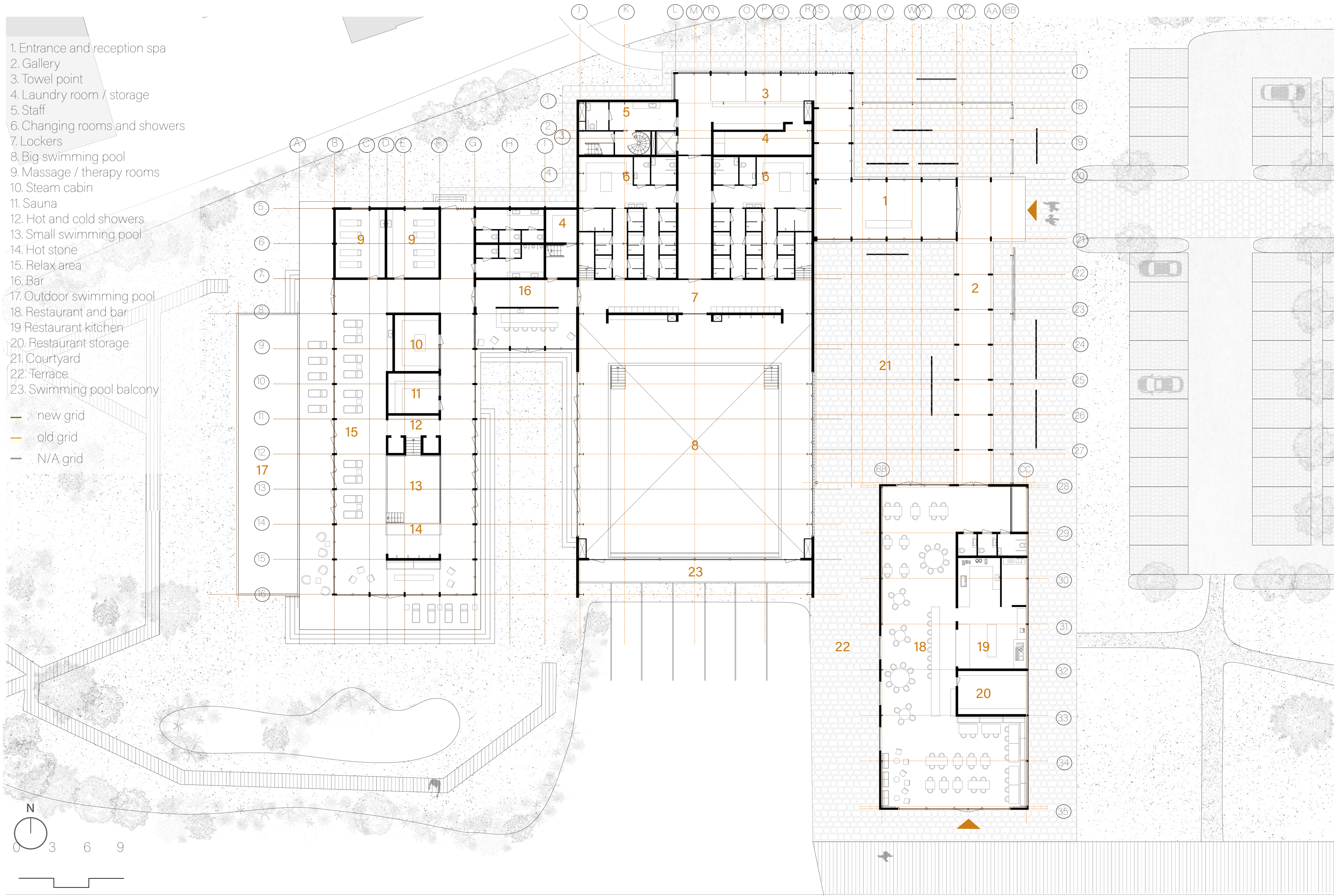


north facade



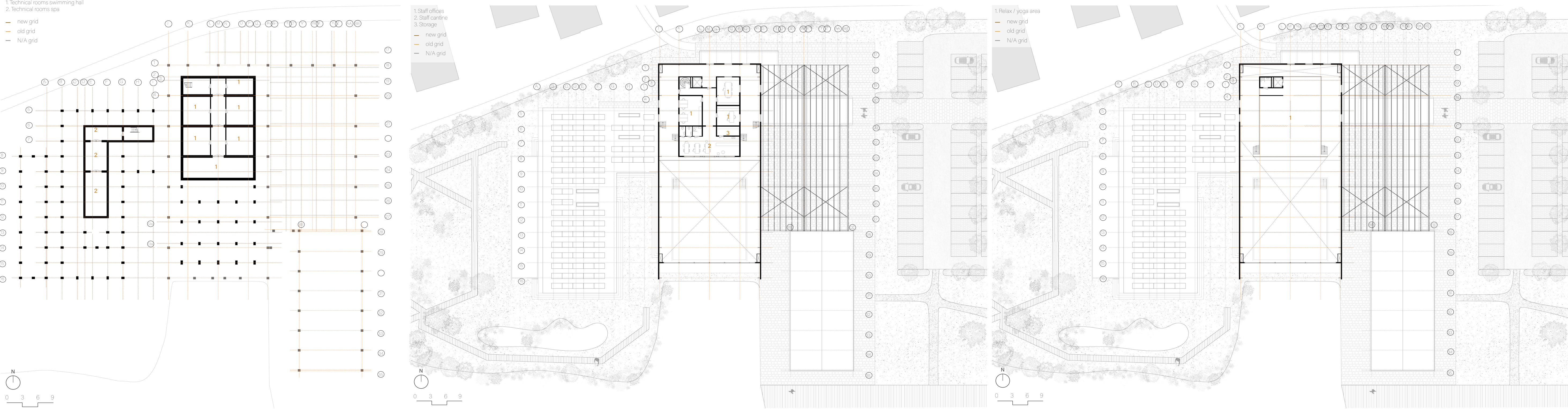
Level 0

Floorplan 1:200



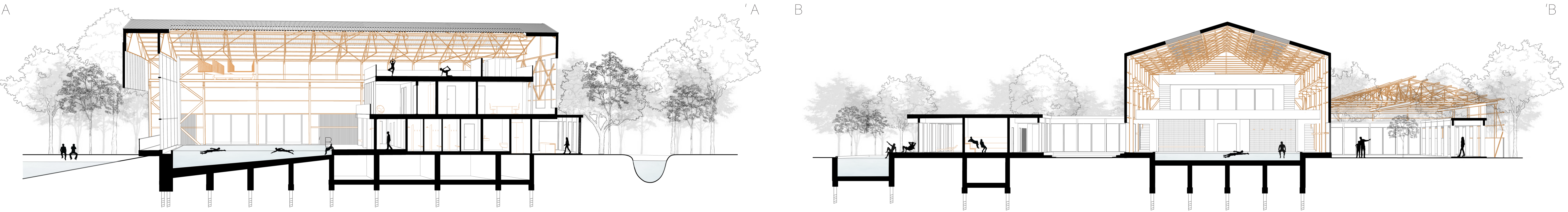
Level -1, 1 & 2

Floorplans 1:400



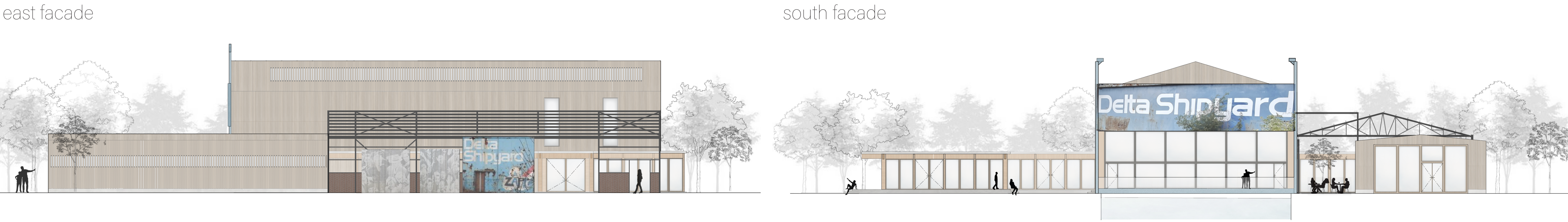
Cross sections

A-A and B-B 1:200



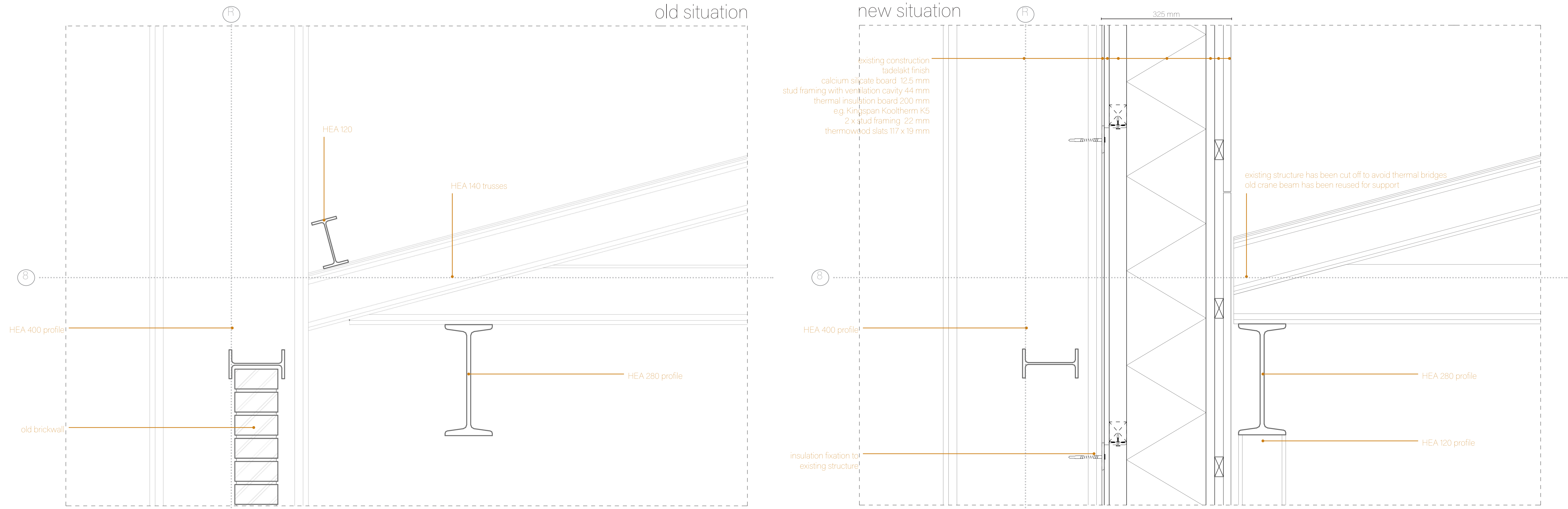
West, north, east and south facade

Elevations 1:200



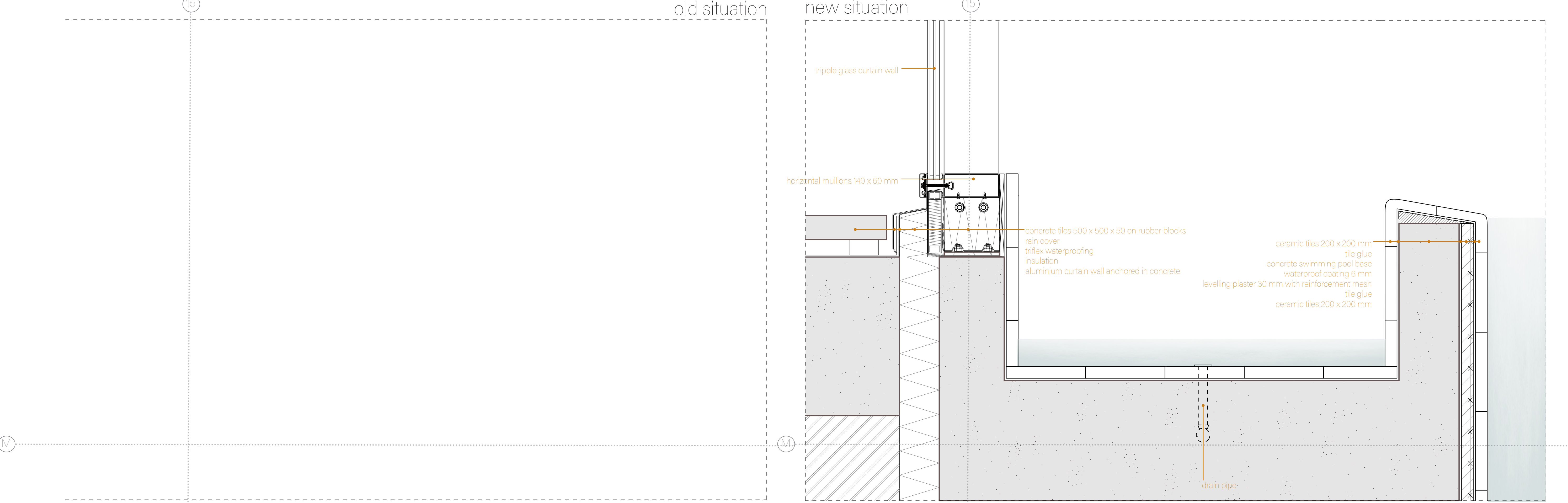
New skin interrupts old construction

Vertical detail 1:5



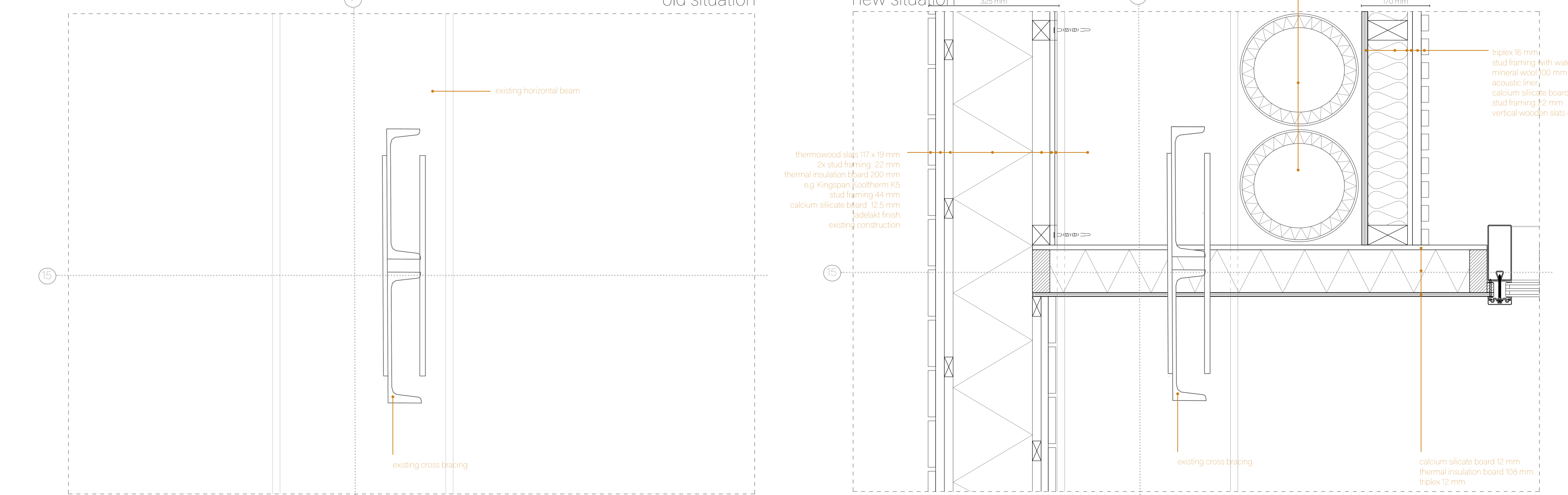
Infinity pool meets curtain wall

Vertical detail 1:5



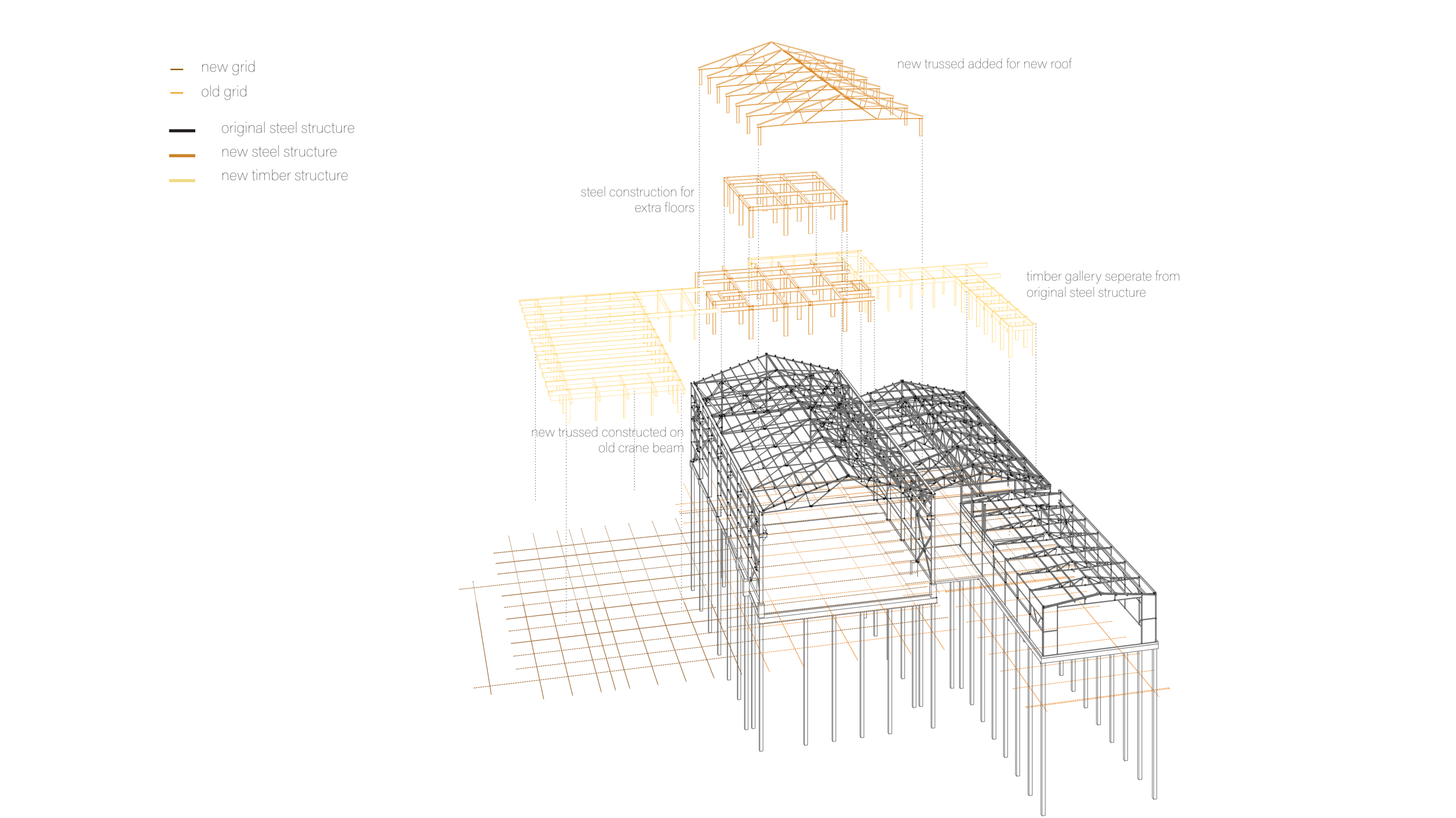
New wall meets crossbracing

Horizontal detail 1:5



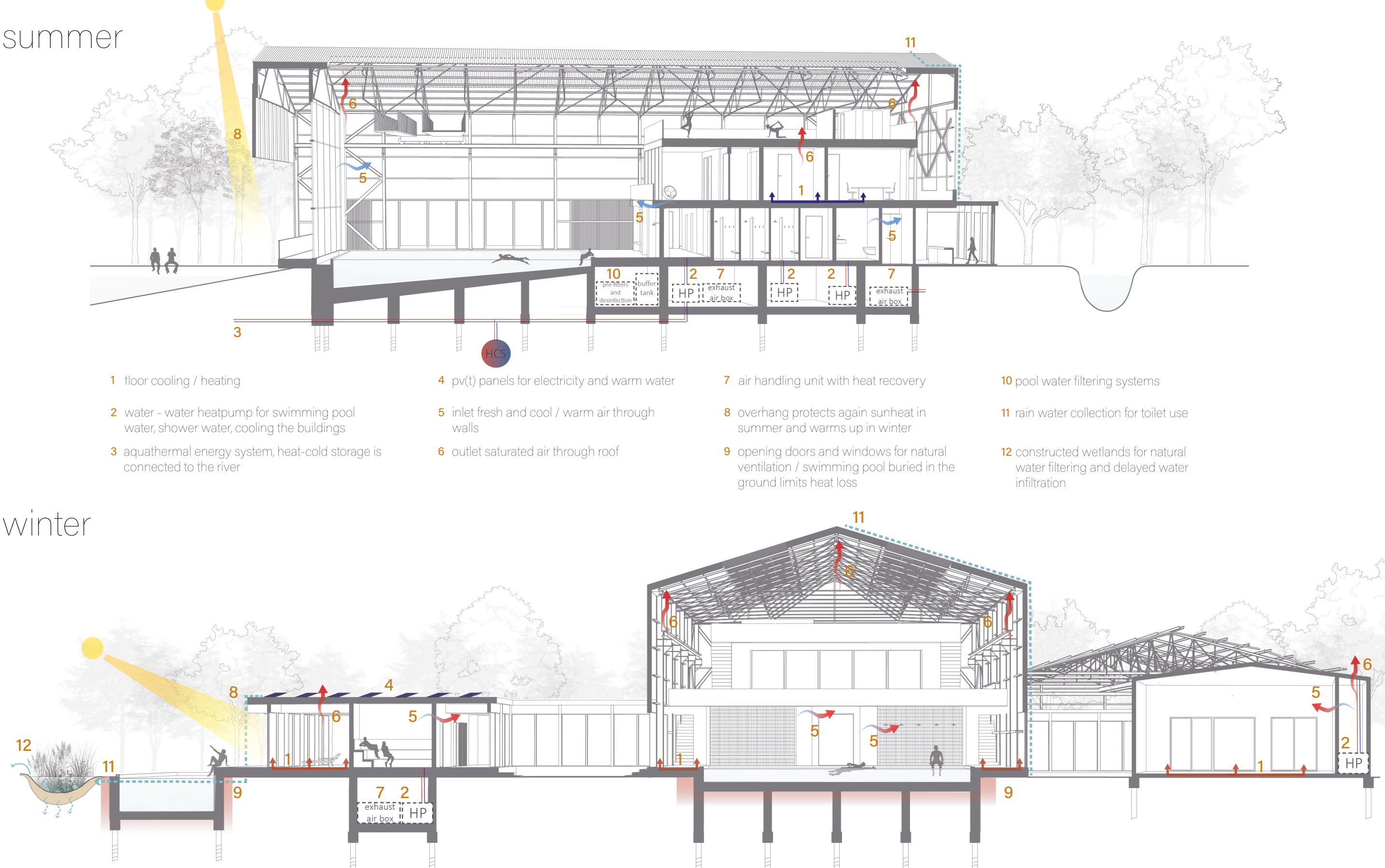
New and old structures

Construction axo



Summer and winter situation

Climate schemes



Old hall wrappd in new skin

Facade fragment 1:20

