

# UNDRESSING THE DESERT

Sandy Prikanowski

The problem

Context

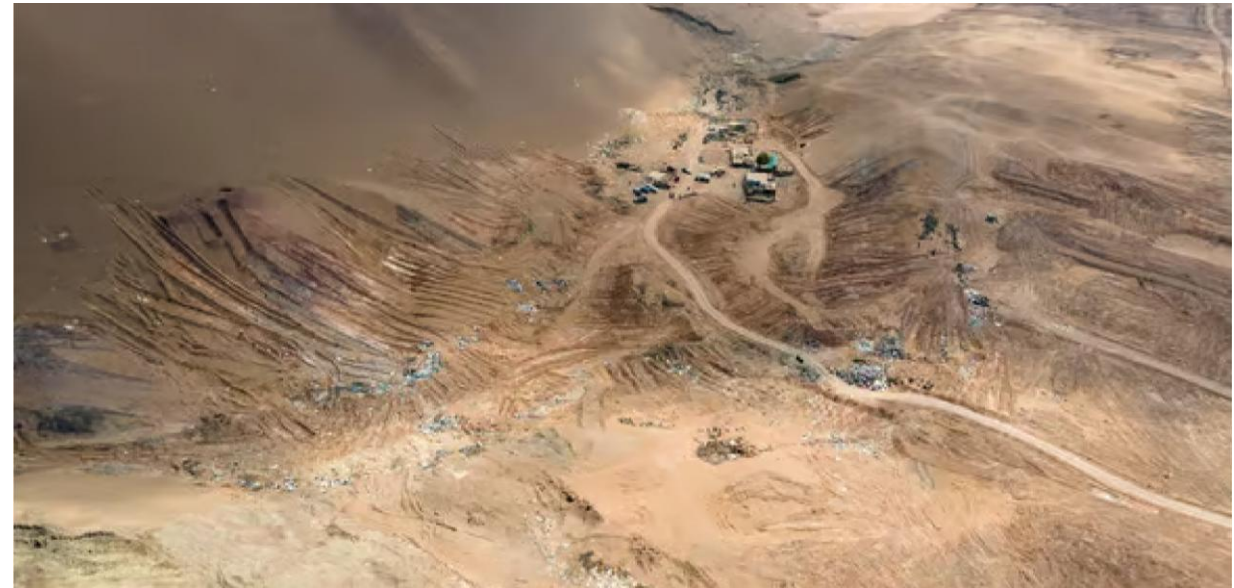
Fieldwork

Design output

Conclusions

# THE PROBLEM

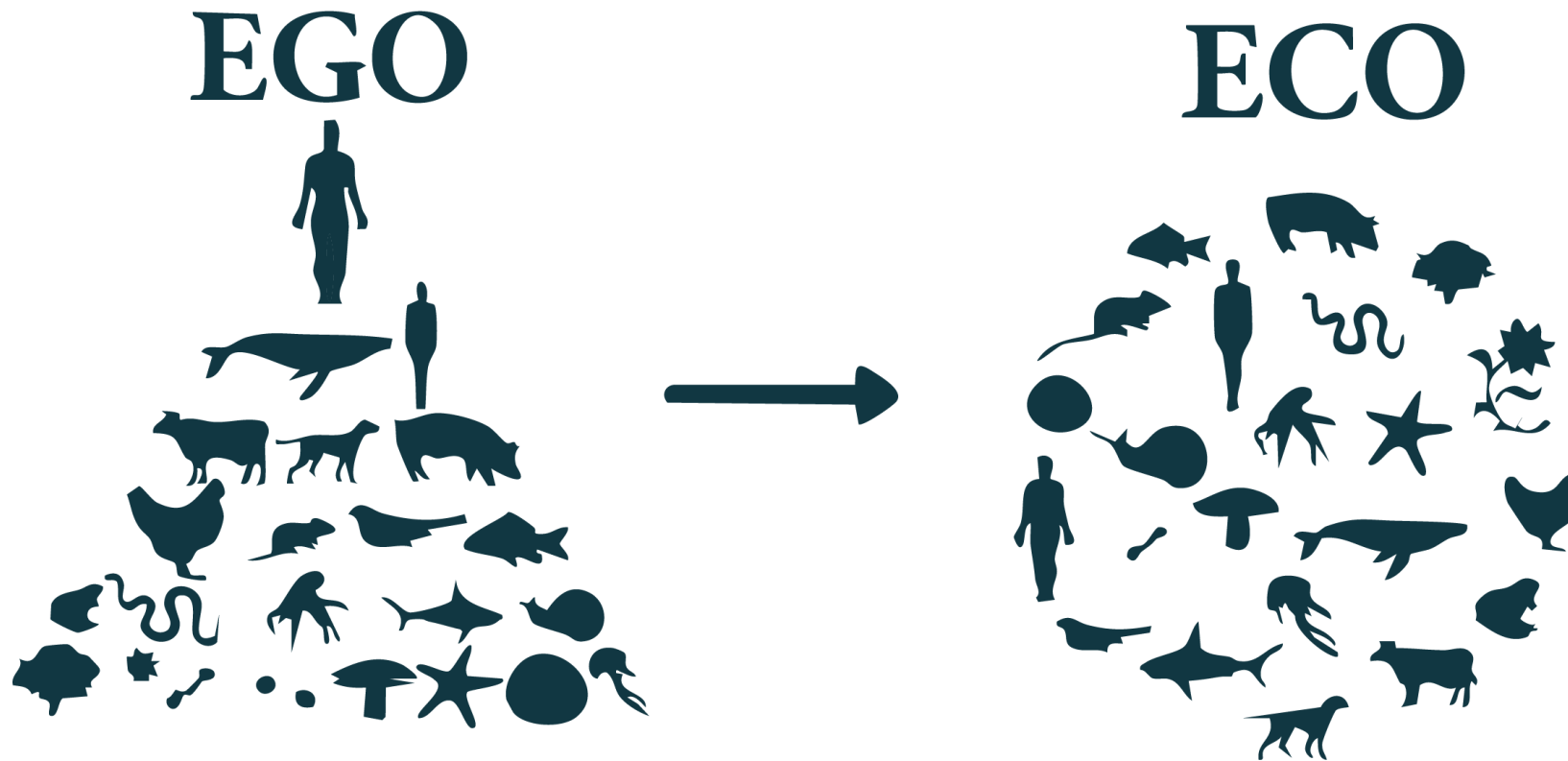








... including the more-than-human





**Why is no-one doing anything about this?!**

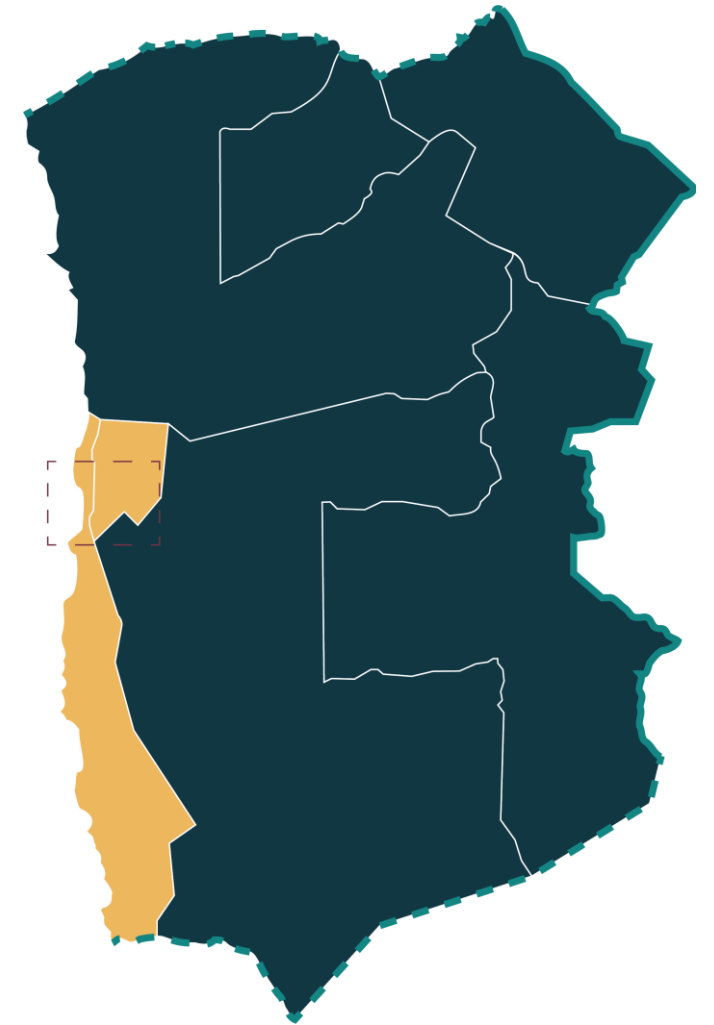
# CONTEXT

**Why does this happen? & Why here?**



Chile

Tarapacá



Iquique & Alto Hospicio



# Iquique

Regional capital, appreciated for its lively beaches



# Iquique port

Imports 59.000 tons of used textile per year



# ZOFRI

Zone Franca de Iquique





# Alto Hospicio

Residential neighbor to Iquique



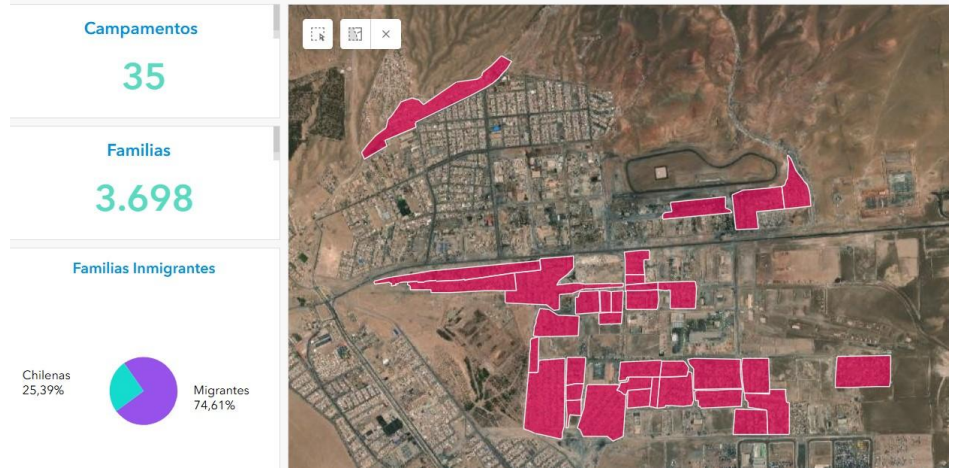
**GRAFICO 1.2..** Población de Alto Hospicio entre los años 1920 hasta 2020 (proyectado).



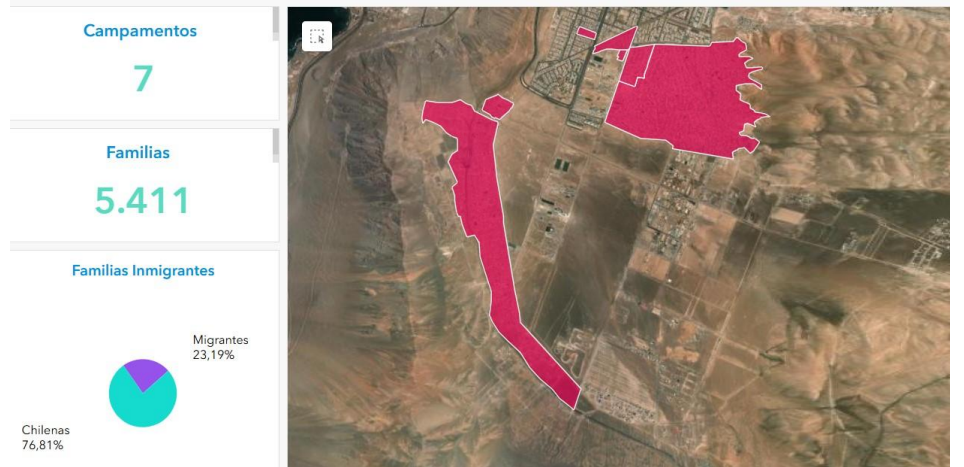
**Fuente:** INE, censos estatales y recopilación histórica.



TECHO CES Catastro Nacional de Campamentos 2022-2023 TECHO-Chile



TECHO CES Catastro Nacional de Campamentos 2022-2023 TECHO-Chile



# La Quebradilla

Main point of resale for used textiles



# Iquique



*Lively*

*Residential*



*Commercial*

*Vulnerable*



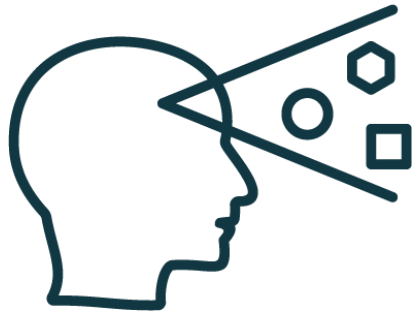
*Wealthy*

*Informal*

# Alto Hospicio







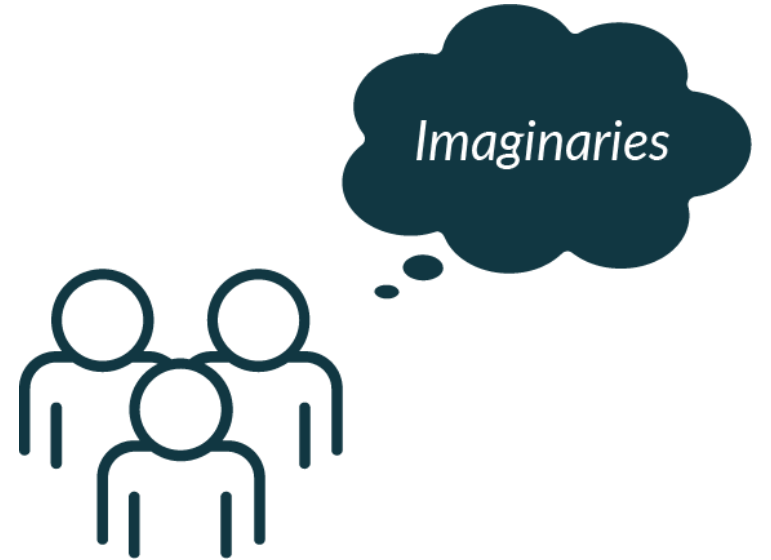
*Perception*

+



*Representation*

=

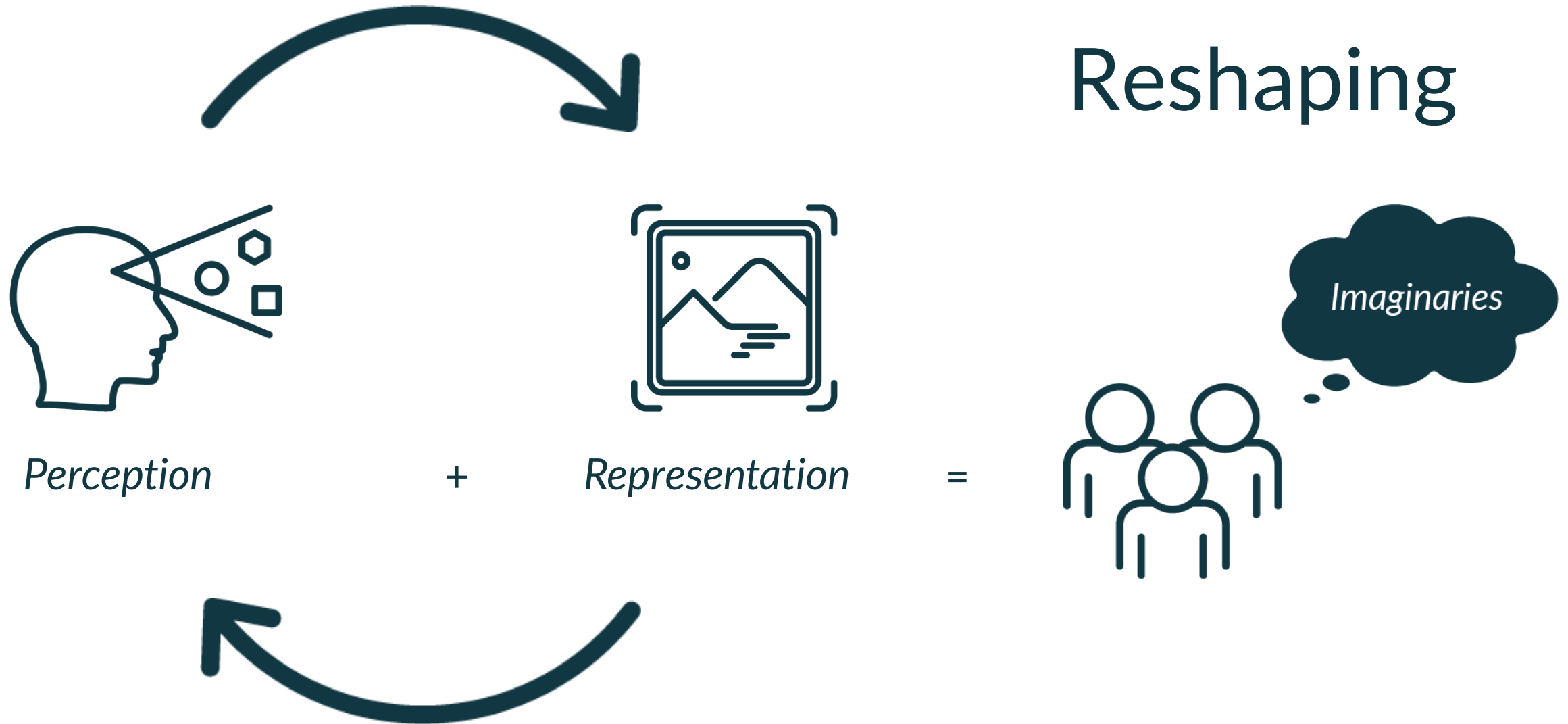




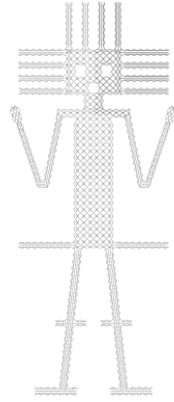
*“Empty”*



# Reshaping



# El Gigante Vestido



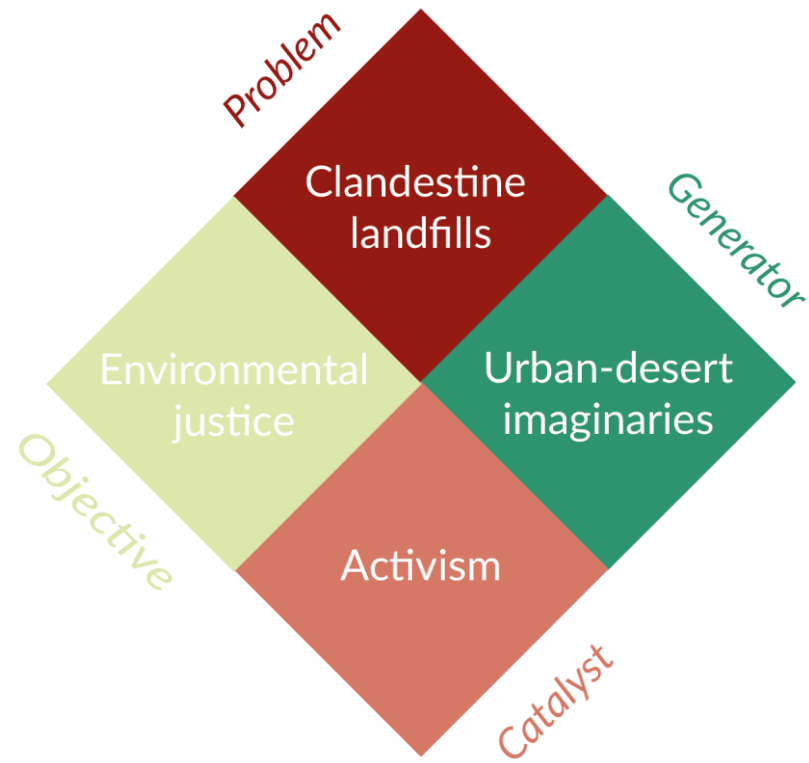
A woman with dark hair, wearing a white, short-sleeved, knee-length dress with a draped side, stands in a vast, arid desert landscape. She is posing with one hand on her hip and the other raised to her head. The background consists of rolling sand dunes under a hazy, orange-tinted sky. The text 'ATACAMA FASHION WEEK' is overlaid in large, bold, orange capital letters across the center of the image. The overall mood is artistic and fashion-oriented.

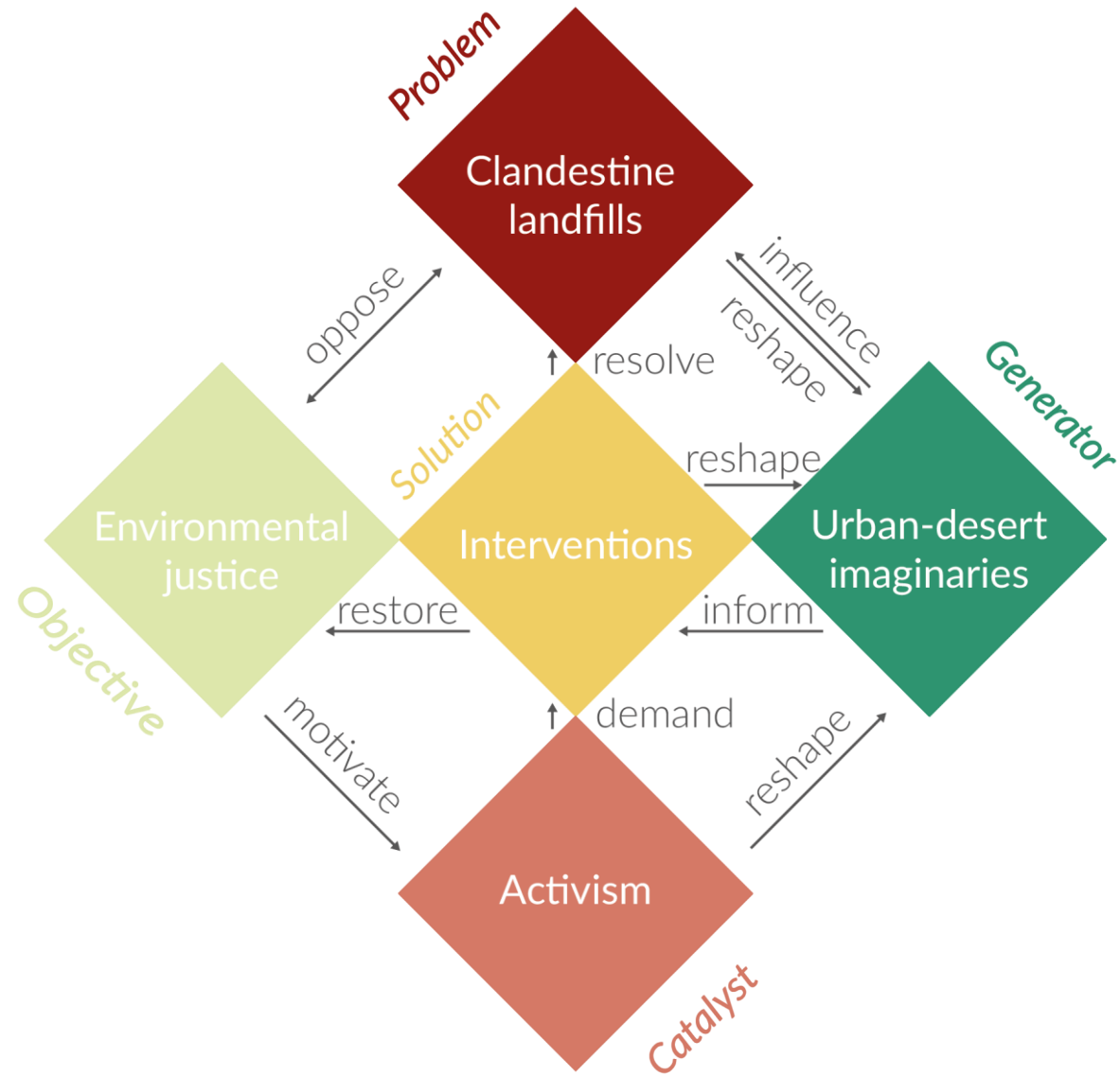
# ATACAMA FASHION WEEK

www.atacamafashionweek.cl

# Activism

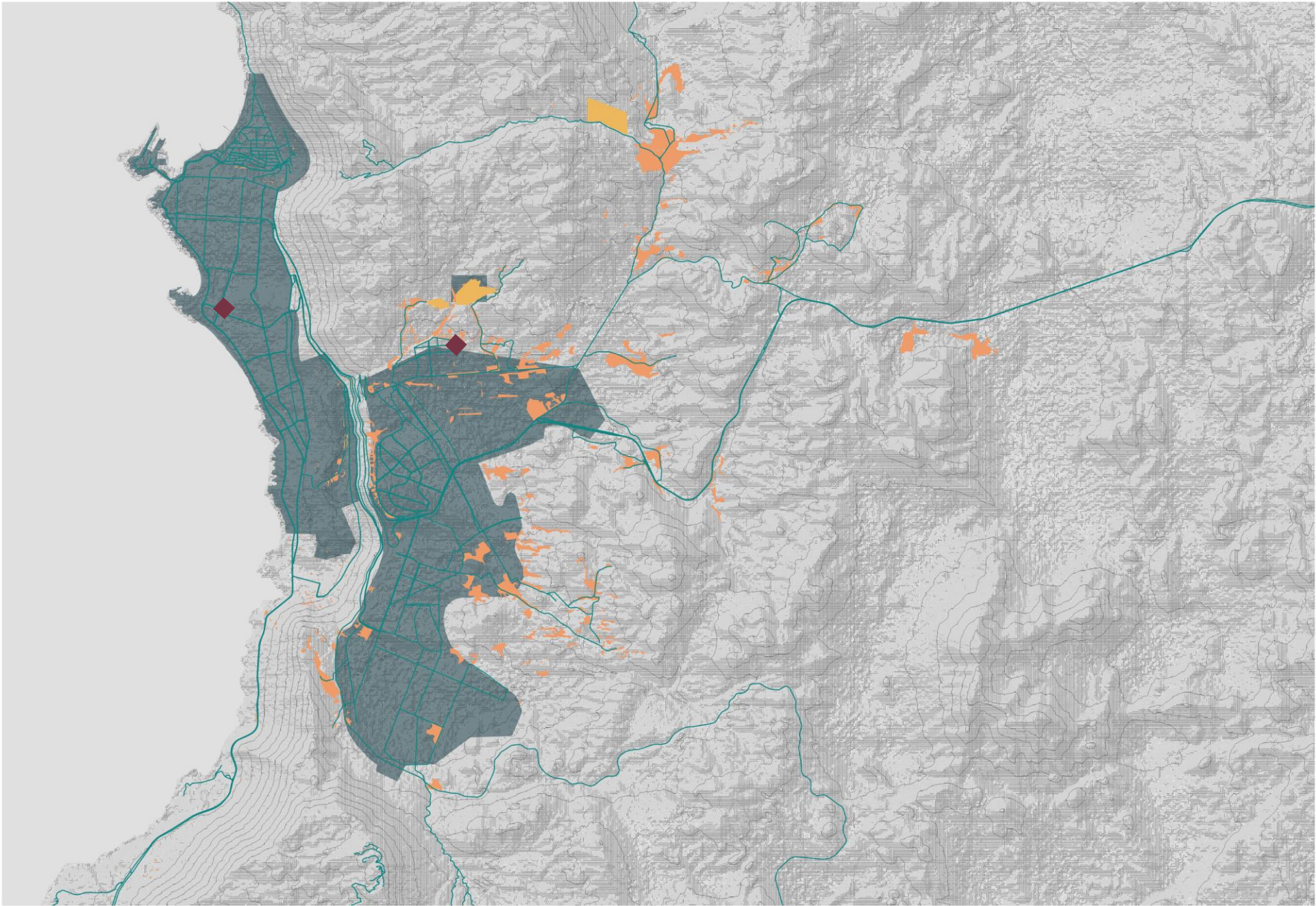






# FIELDWORK

























# DESIGN OUTPUT

**What is a pattern language?**

IMAGE

TITLE

Hypothesis (relating why and how)

Textile waste

<- slider ->

Other waste

Type: Campaign | Enterprise | Event | Infrastructure | Policy | Product | Spatial Intervention

Scale of impact: Site / Neighborhood / City / Region / Macroregion / Country / World

Theoretical or Emperical Back-up

Why

Practical Implementation

How

!

Attention  
Any risk or conflict related to the pattern, if relevant.

Stakeholders  
... | ... | ...

Related Patterns

#

#

#

#

#

#

#

Sources: Fieldwork | Interview | Literature

**Waste Management**

**Regulation and Enforcement**

**Education and Engagement**

**Exposure and Protest**

**Urban Planning and Design**


# Waste Management

## Regulation and Enforcement

## Education and Engagement

## Exposure and Protest

## Urban Planning and Design




### FROM DUMP TO PARK

40

By transforming a dumpsite into a park the risk of recurrence of waste dumping on that site is mitigated, making the effort of cleaning worthwhile, while also giving a boost of positivity to the imaginary of the city inviting citizens to look differently at their living environment, stimulating a sense of care.

Textile waste      Other waste



#### Spatial Intervention

Site | City

#### Theoretical or Empirical Back-up

The municipality of Alto Hospicio faces difficulties in securing funding from higher-level government institutions for clearing illegal dumpsites, as these institutions rightfully suspect that dumping may resume after cleanup. Transforming a cleared dumpsite into a public park helps mitigate this risk by preventing future waste accumulation through active community use. Additionally, such transformations contribute to a more positive public image of the city, fostering a renewed relationship between residents and their environment.

#### Practical Implementation

The Imagen Objetivo of the Improved Urban Livability plan for Iquique and Alto Hospicio, developed by Corporación Ciudades, includes a proposal to convert the littered cliffside into a extensive urban park. This plan envisions an expansion of the existing Parque Los Cóndores.



#### Attention

Not every dumpsite might be a suitable location for a park.

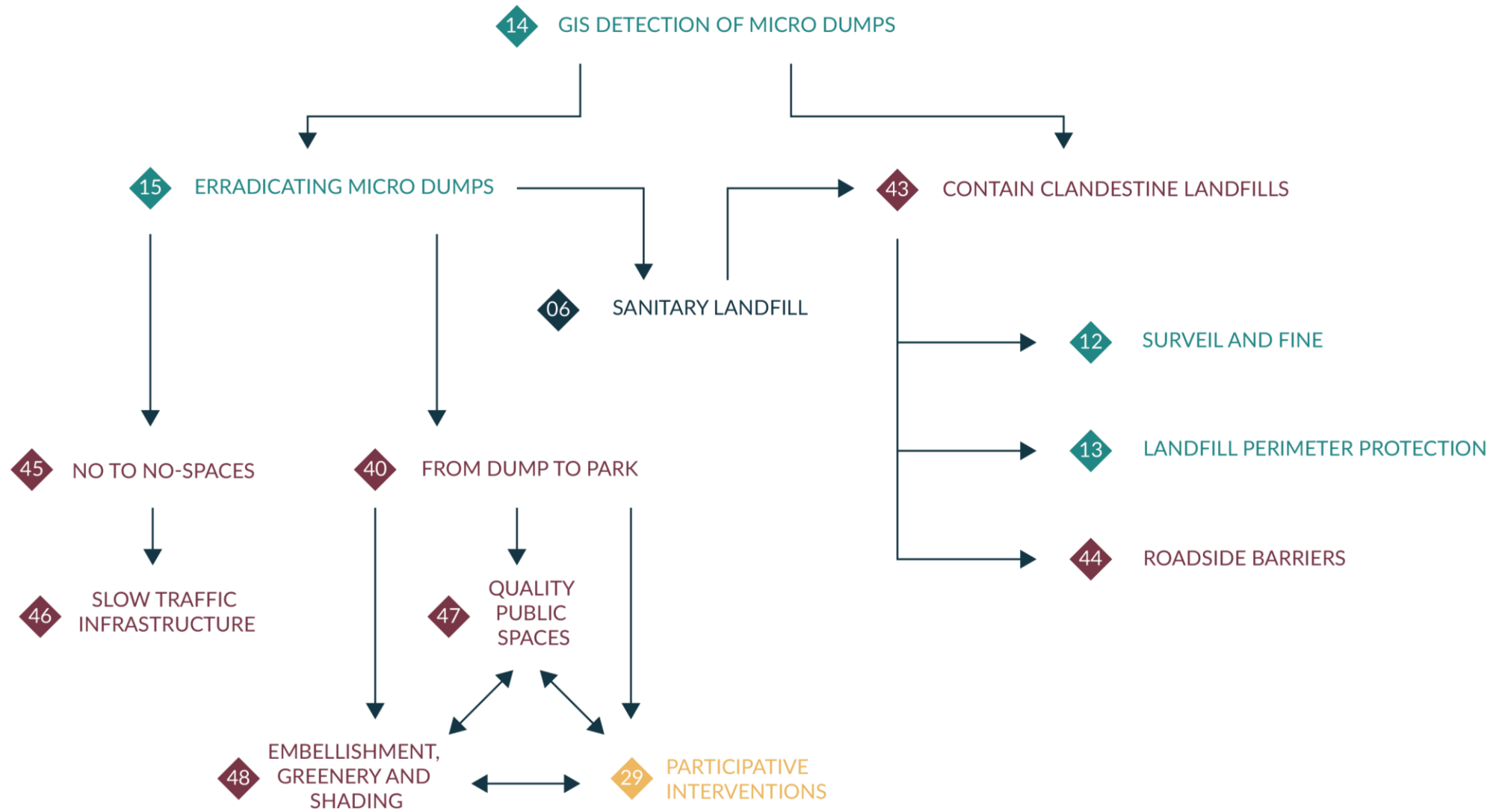
#### Stakeholders

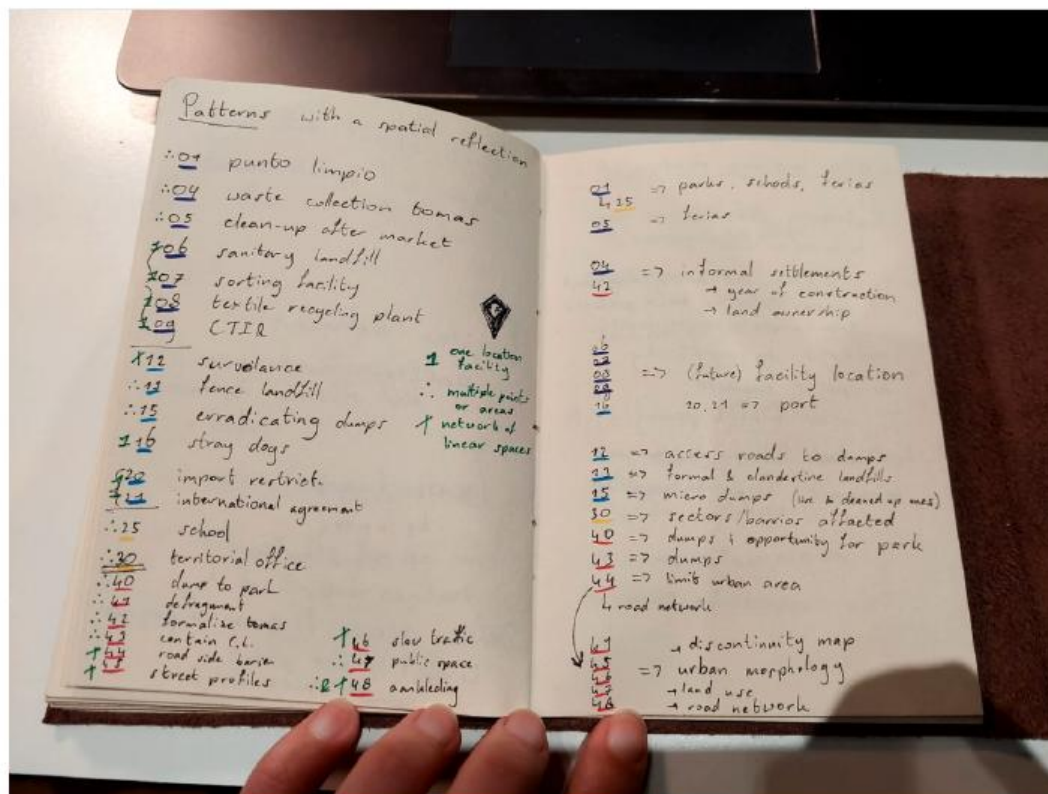
Municipalities | Urban and landscape designers

#### Related Patterns



Sources: Interview Official MAHO | (Corporación Ciudades, n.d.-d)





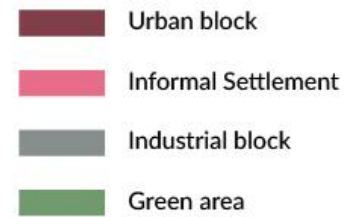
	clandestine landfills	facility location	informal settlements	limit urban area	markets	micro dumps	neighborhoods	official landfills	parks	port	puntos limpios	road network	schools	urban blocks
1 waste collection points					x				x		x		x	
4 waste collection informal settlements			x											
5 clean-up after market hours					x									
6 sanitary landfill		x												
7 waste sorting facility		x												
8 textile recycling facility		x												
9 integral waste treatment center		x												
12 surveil and fine	x					x						x		
13 landfill perimeter protection	x							x						
15 erradicating micro dumps				x		x								
16 reducing stray dog population		x												
20 import restrictions for used textile										x				
21 international quality agreement										x				
25 recycling at school													x	
30 territorial office	x					x	x							
40 from dump to park	x			x		x			x					
41 defragment urbanity			x		x									x
42 formalize informal settlements			x											
43 contain clandestine landfills	x													
44 road side barriers	x			x								x		
45 no to no-spaces				x								x		x
46 slow traffic infrastructure				x								x		
47 quality public spaces				x	x				x					
48 embellishment, greenery and shading				x					x			x		

## SPATIAL CRITERIA

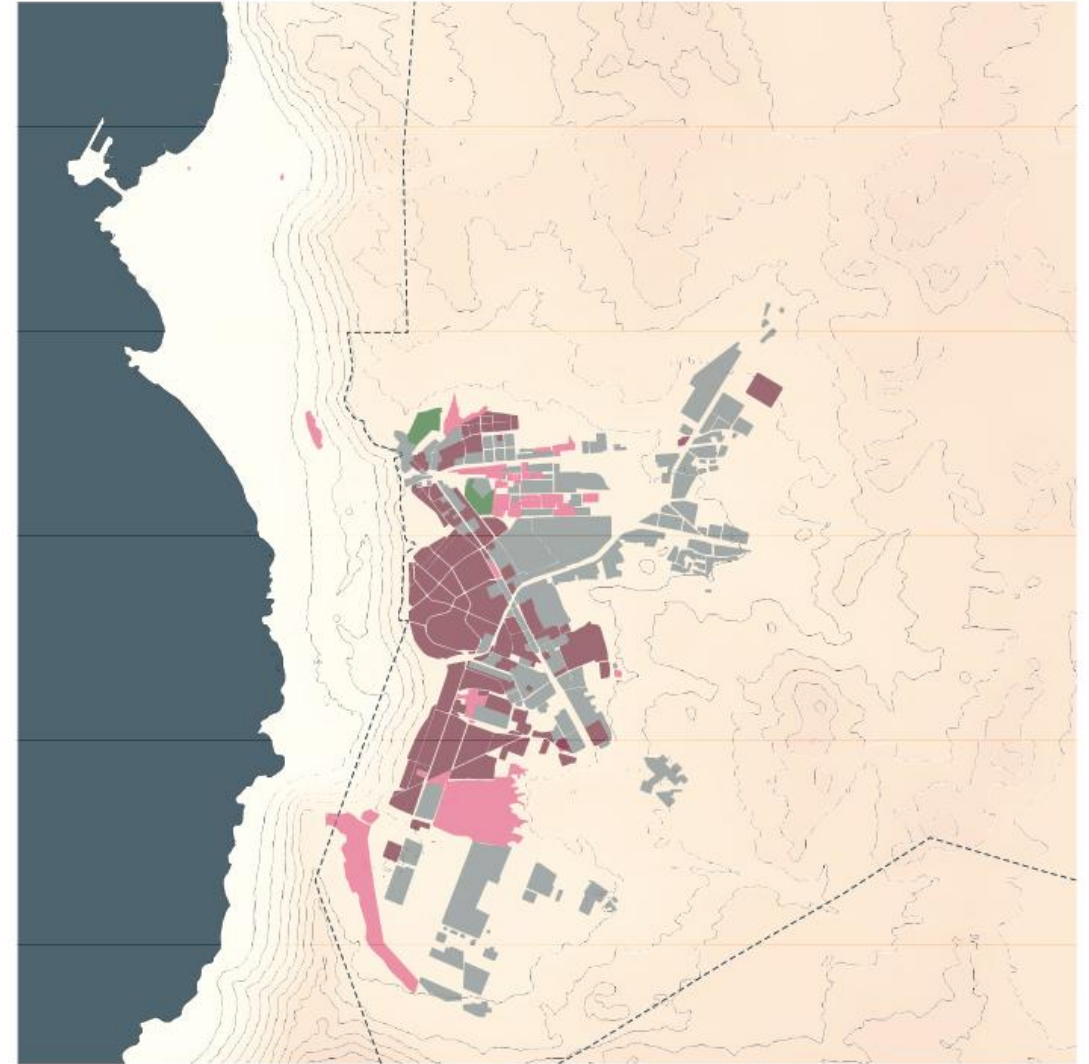
04 Waste collection informal settlements

41 Defragment urbanity

42 Formalize informal settlements



0 1 2 km N



- 01 punto limpio (not visible)
- 04 waste collection informal settlements
- 05 clean up after market hours
- 06 sanitary landfill
- 07 sorting facility
- 08 textile recycling plant
- 09 integral waste facility
- 12 surveillance
- 13 landfill perimeter protection
- 15 erradicating micro dumps
- 16 reducing stray dog population
- 20 import restrictions for used textile
- 21 international quality agreement
- 25 recycling at school (not visible)
- 30 territorial office
- 40 from dump to park
- 41 defragment urbanity
- 42 formalize informal settlements
- 43 contain clandestine landfills
- 44 road side barriers
- 45 no to no-spaces
- 46 slow traffic infrastructure
- 47 quality public spaces
- 48 embellishment, greenery and shading

0 1 2 km N



# CONCLUSIONS

Implicit hypothesis

~~“Why is no one doing anything about this?”~~

The solution

Multi faceted & interdisciplinary

-> for which a pattern language can be used as an observatory and integrative tool

Role of urban designers

Creating spaces worth to care for

