

Project Book

2023/24

Julia Zuzanna Pałęga

Introduction

Project Book

This book shows my graduation diploma done under the guidance of the studio of Interiors Buildings Cities at the faculty of TU Delft. The topic of the design studio was an extension of the Stockholm City Library,

My project takes on the notion of a type, while simultaneously trying to respond to this very specific context. It is a about balancing a rigidity of a type, with the wild nature of the surrounding landscape.

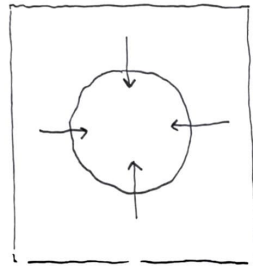
With the tutoring help of:

Matthijs Klooster
Sereh Mandias
Susanne Pietsch

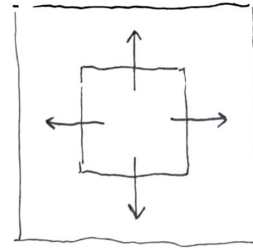
Daniel Rosbottom
Jurjen Zeinstra
Mark Pimlott
Sam De Vocht

Urban setting

Echoing the type



central space is served by the surrounding spaces

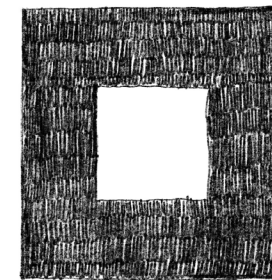
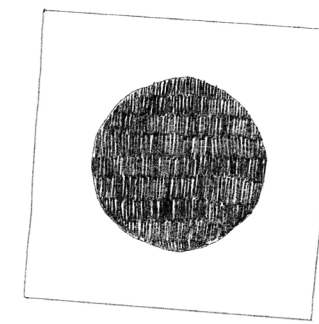


central space is serving the surrounding spaces

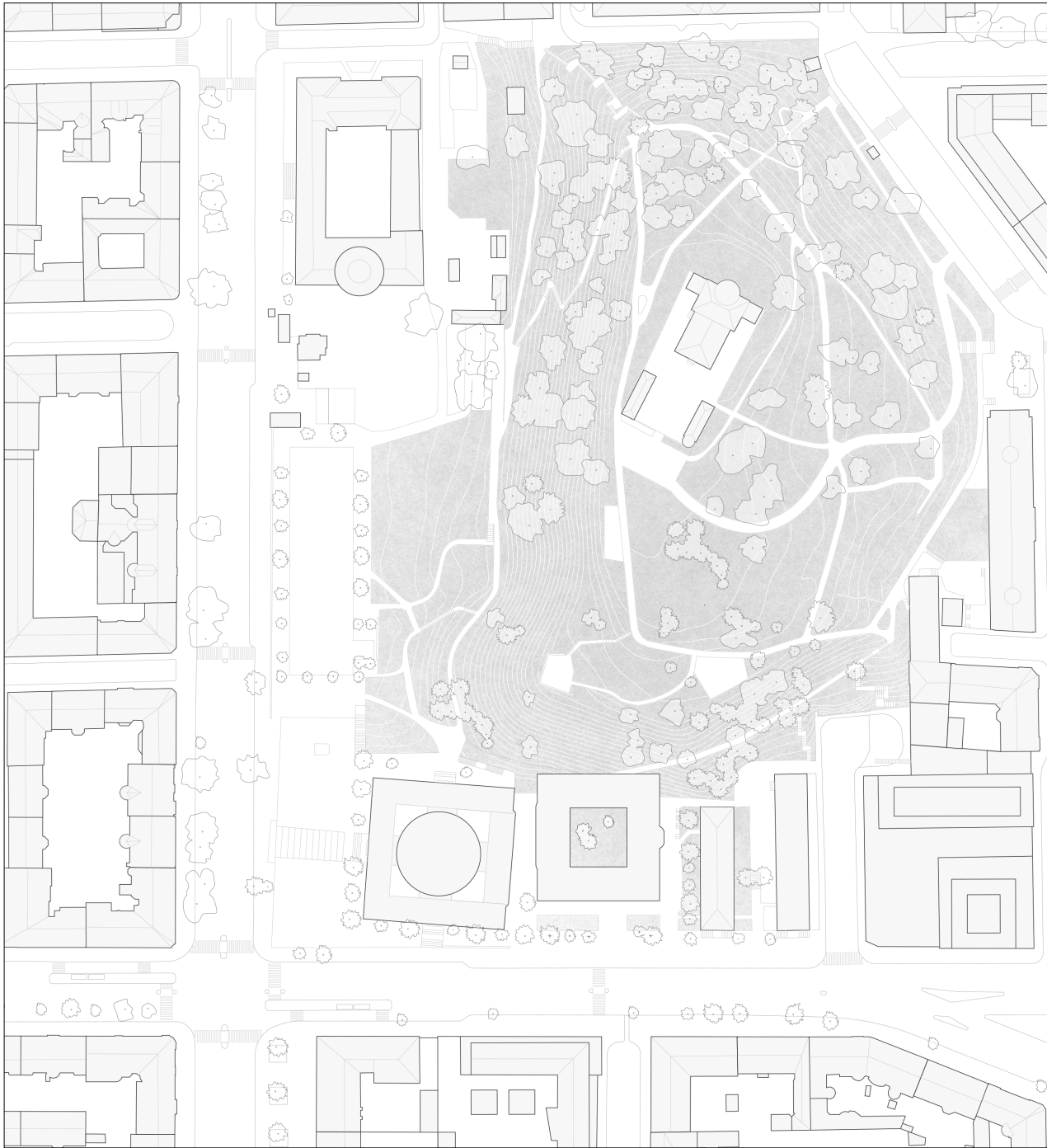
My proposition is a building that maintains a typological connection to the library, yet through a new composition, serves the needs of modern society. The proposed library would echo the typology of the existing structure, but instead of a centralized and monumental form, it would embrace a layout surrounding an open courtyard integrating it with the city. The building respects the historical significance of the central space by maintaining a focal point, but

it innovates by transforming this space into an open courtyard. This not only references the historical typology but also questions and evolves it to meet contemporary needs.

While adhering to this rigidity in typology, the design, in contrast to Asplundshuset responds to its context and immediate surroundings. This rigidity momentarily dissolves when it interacts with specific elements of its environment.



Urban plan | Original scale 1:1000

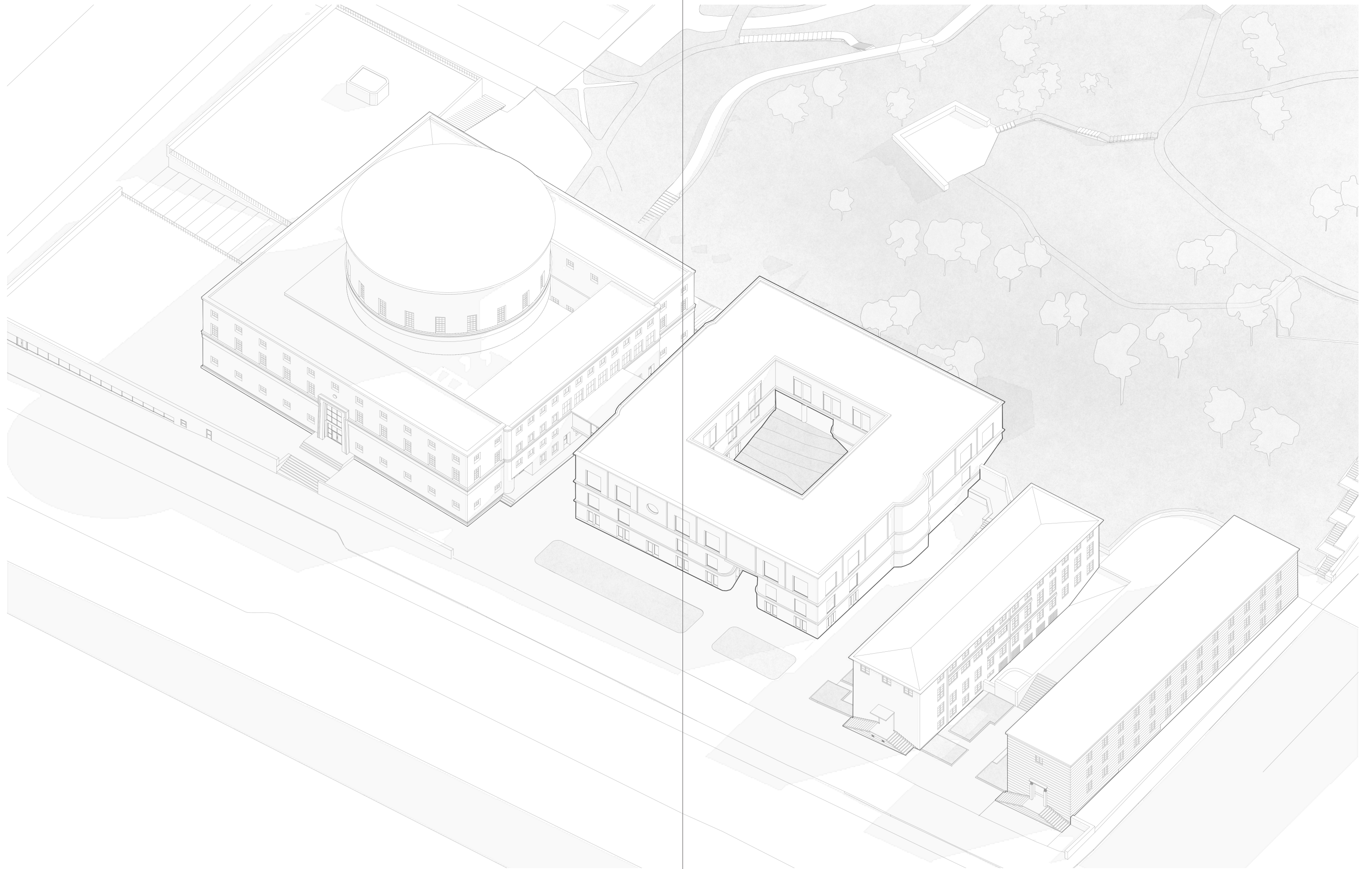


Urban section | Original scale 1:1000





Section | Original scale 1:500

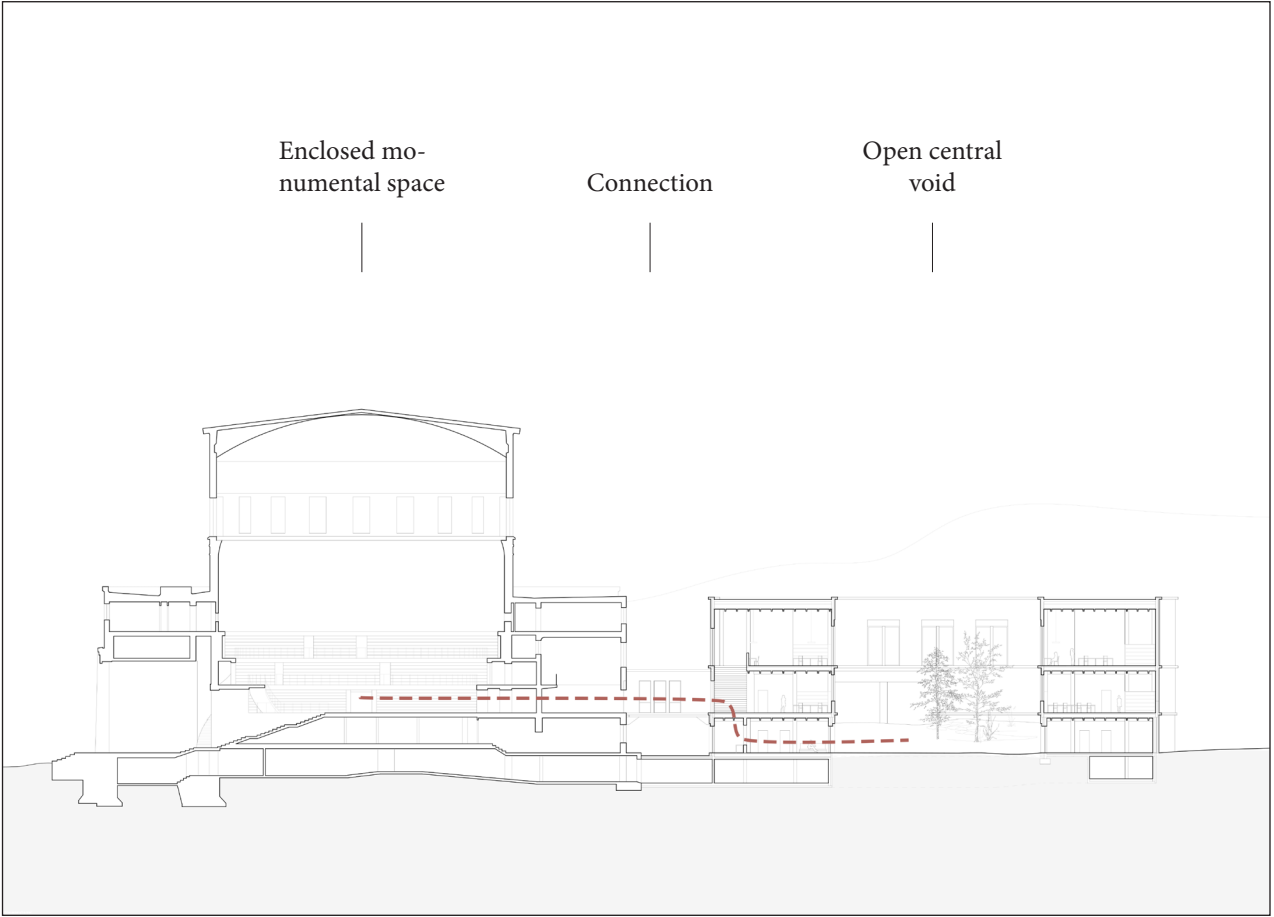


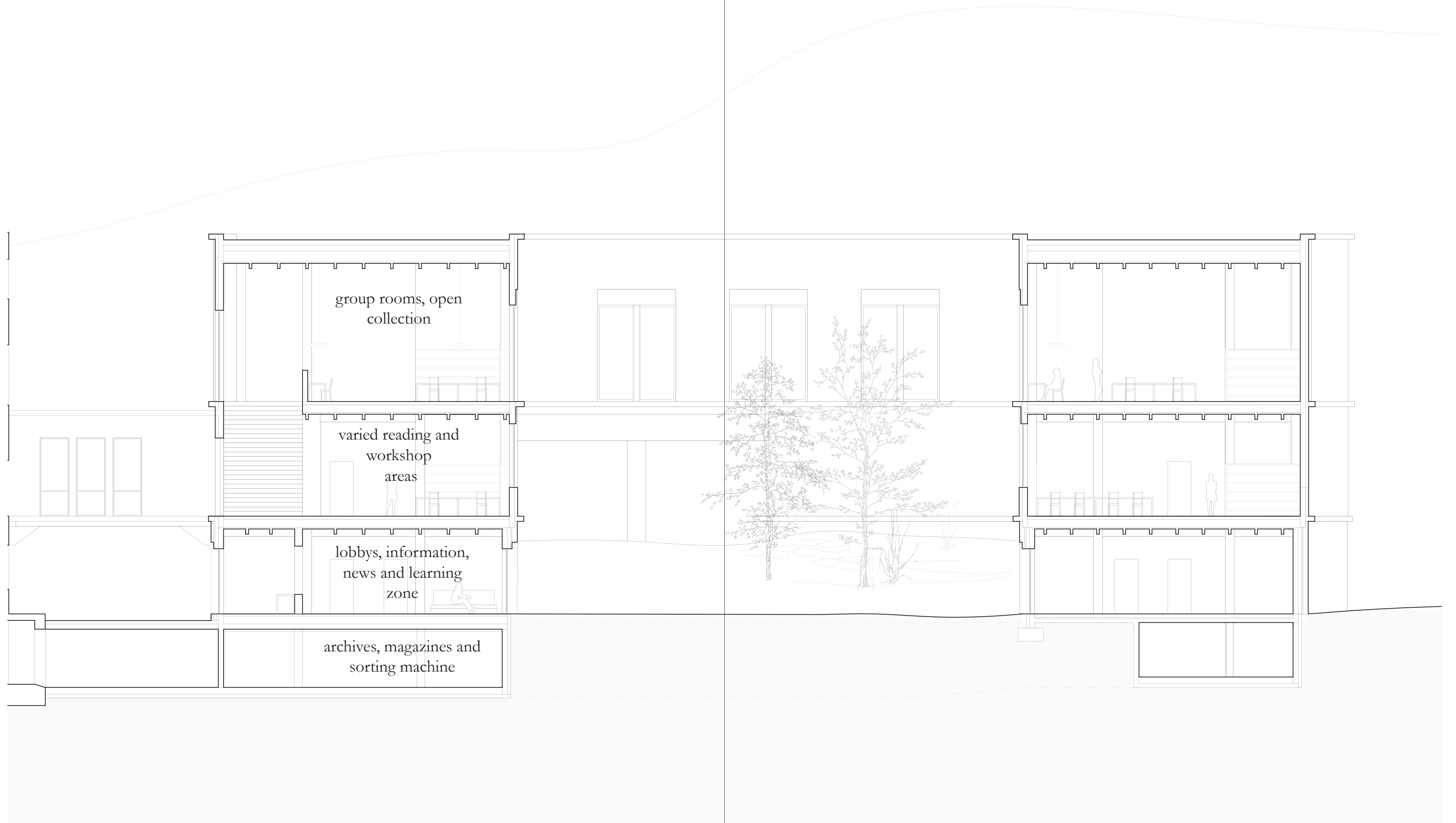
Connection

with the Stockholm City Library

Even though, I place an architecturally separate structure in the proximity of Asplundshuset, I believe they should be connected. I value this sequence of spaces apparent in the Asplundshuset, where users go from this high and narrow space, to then this open central and monumental space. To extend this sequence, I suggest a connection via a small bridge from the west wing. In my proposal, a user could enter through the formal rotunda, proceed through a smaller space,

and finally reach the courtyard. This void would serve as a counterbalance to the rotunda. The buildings are also connected programmatically. The main reading spaces, highlighted in yellow, are positioned on the same level as those in Asplundshuset, facilitating user flow. While the user flow is on the +1 level, the back-of-house operations are connected on the basement level, indicated in grey.







Frontal elevation | Original scale 1:200

A recurring theme in my design has been the issue of proximity: how closely should the new building align with the existing library in terms of expression? For the façade, I propose extending the horizontal lines of the surrounding context and referencing the entrance, while also introducing a new architectural expression.

This approach is reflected in both the tonality and architecture of the building. The extension architecturally references elements of the Asplund Library, such as the undulating façade and the proportions of the cornices, yet it also stands as a distinct entity.

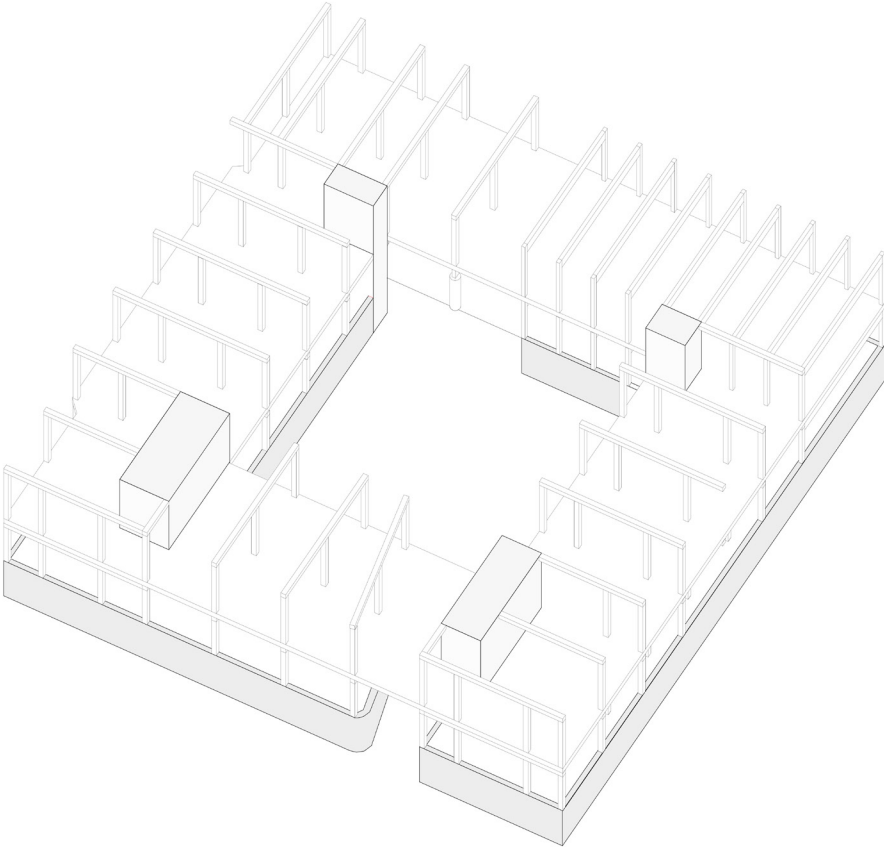


Structure

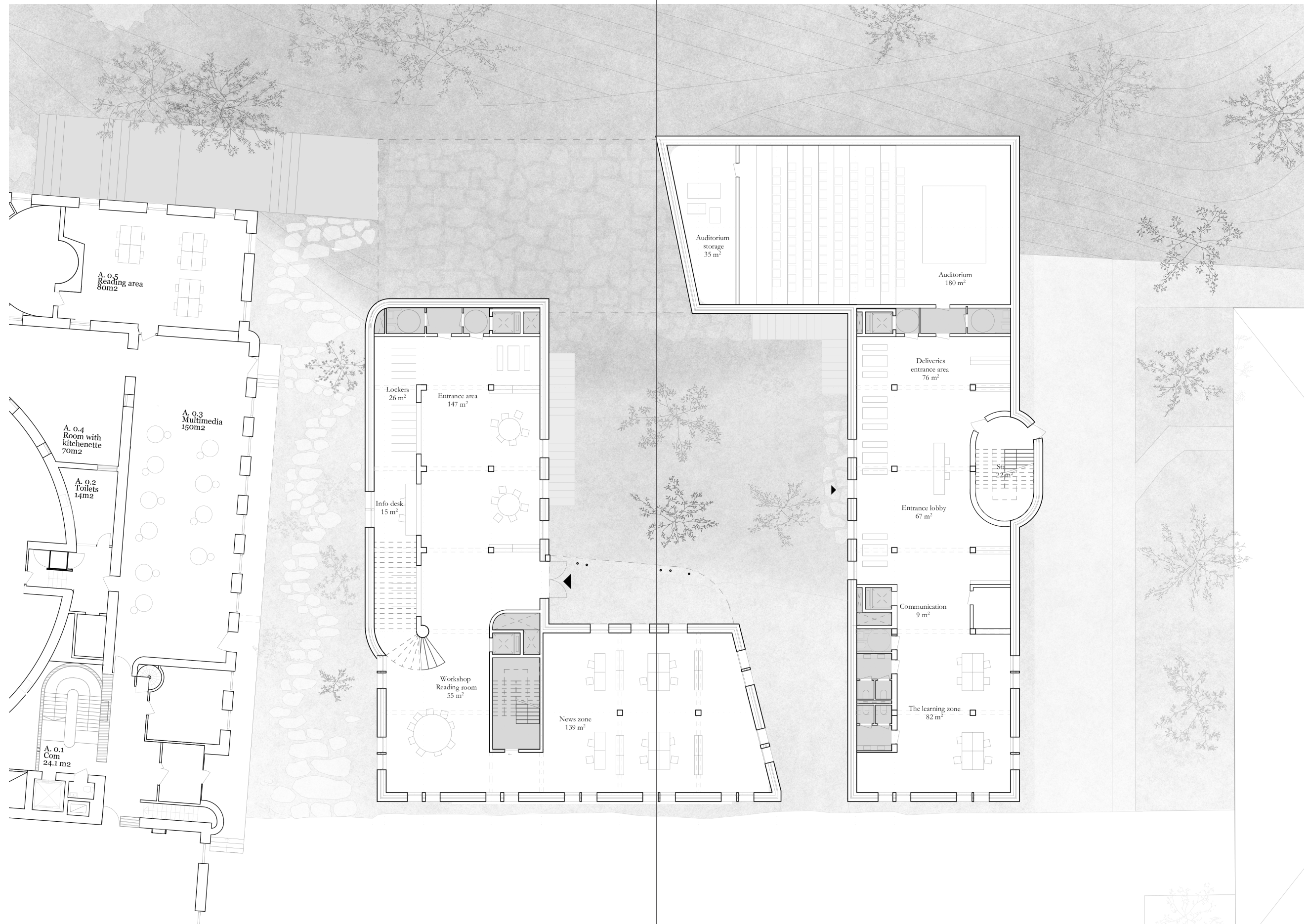
Rigid construction grid

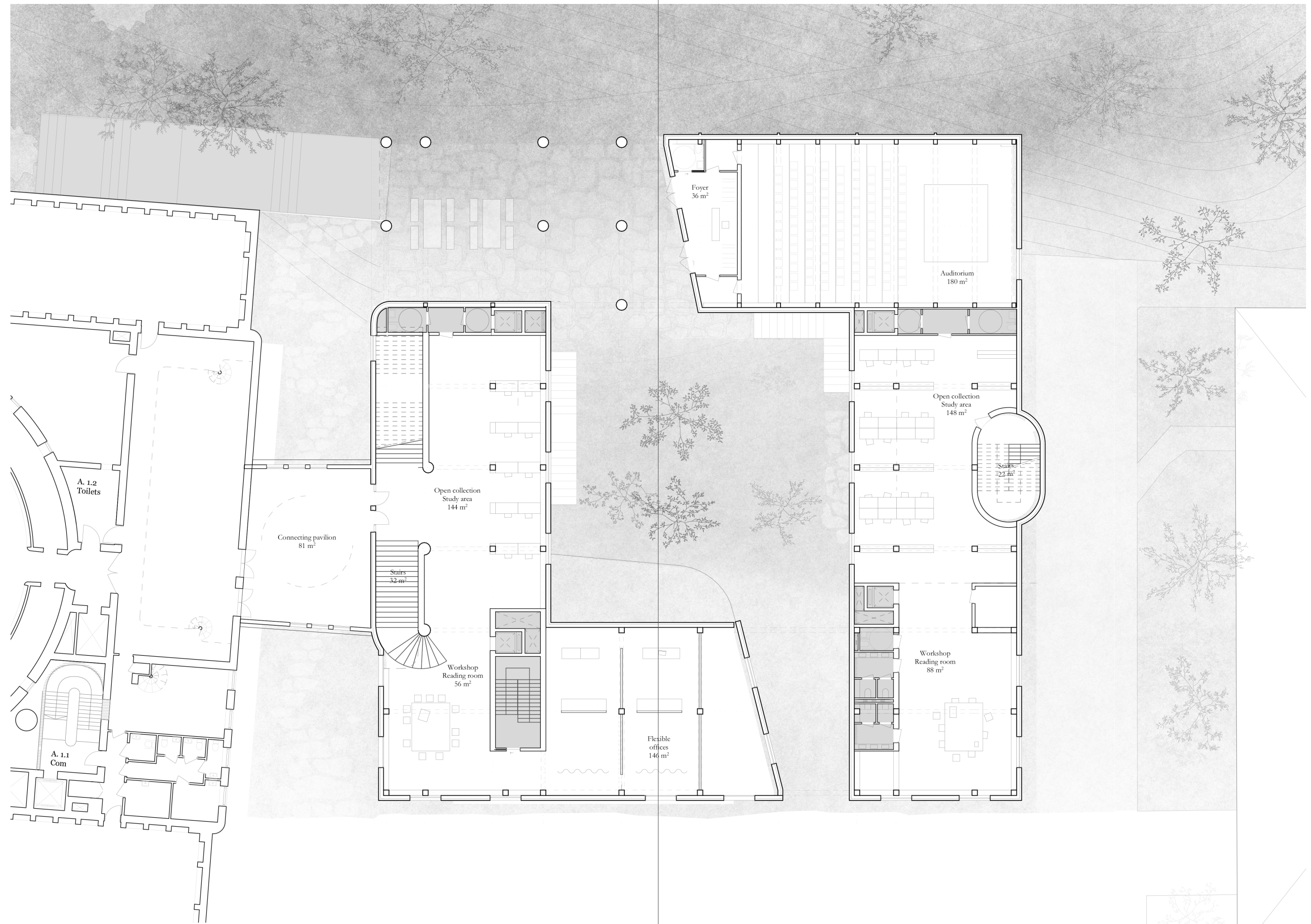
I aimed to create a systematic building that can evolve in the future. To achieve this, it follows a rigid construction grid that allows for adaptability. To reuse the materials of the annex I propose a ground floor made out of load

bearing brick, and a lighter timber structure on top. Additionally the building features four cores, which ensure its stability. The building is then woven into this grid, with two openings in the structure allowing for the flow of users.

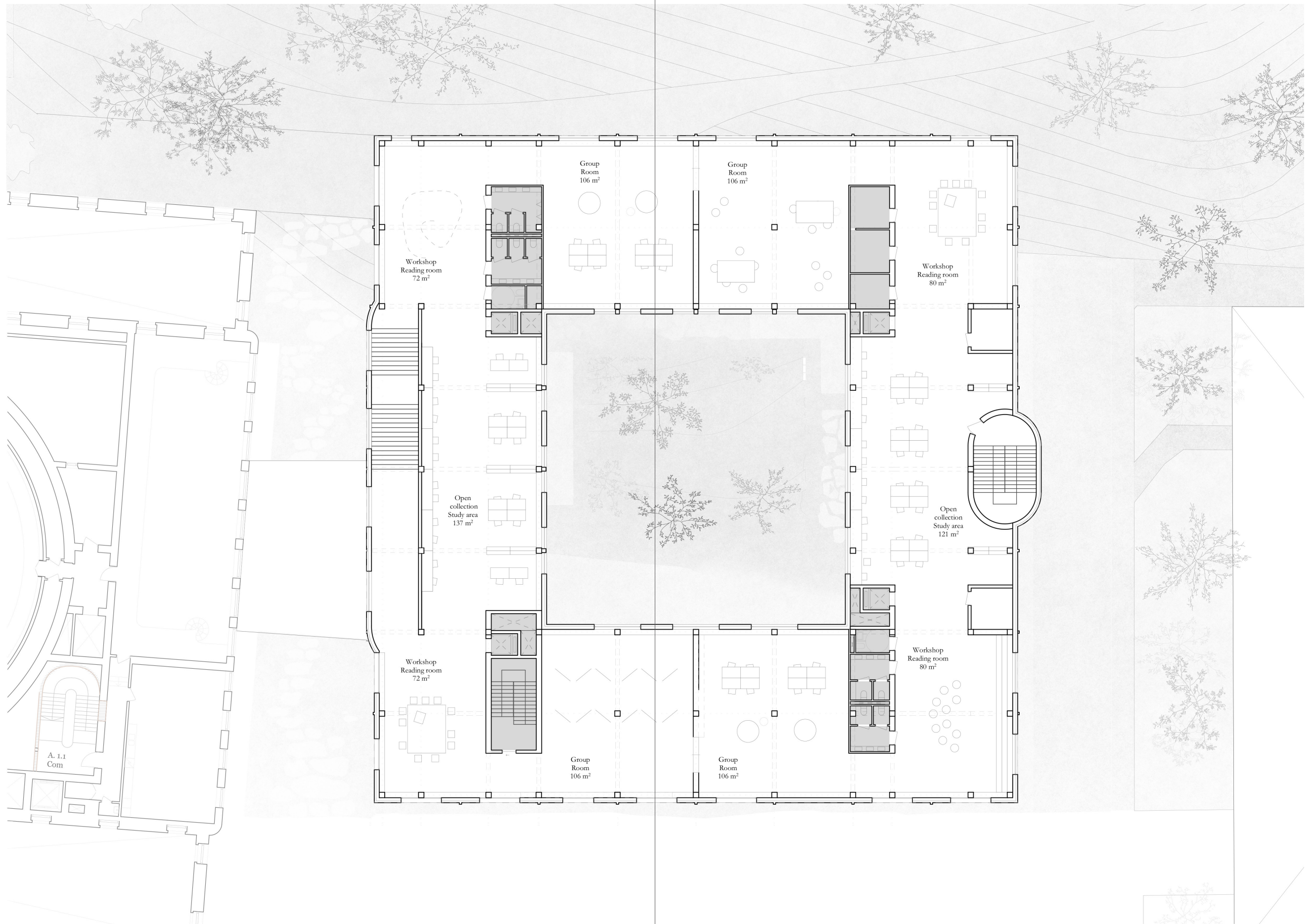








Plan 01 | Original scale 1:200



Plan 02 | Original scale 1:200



View of the main entrance

Democratised poche

Contrasting the Stockholm City Library



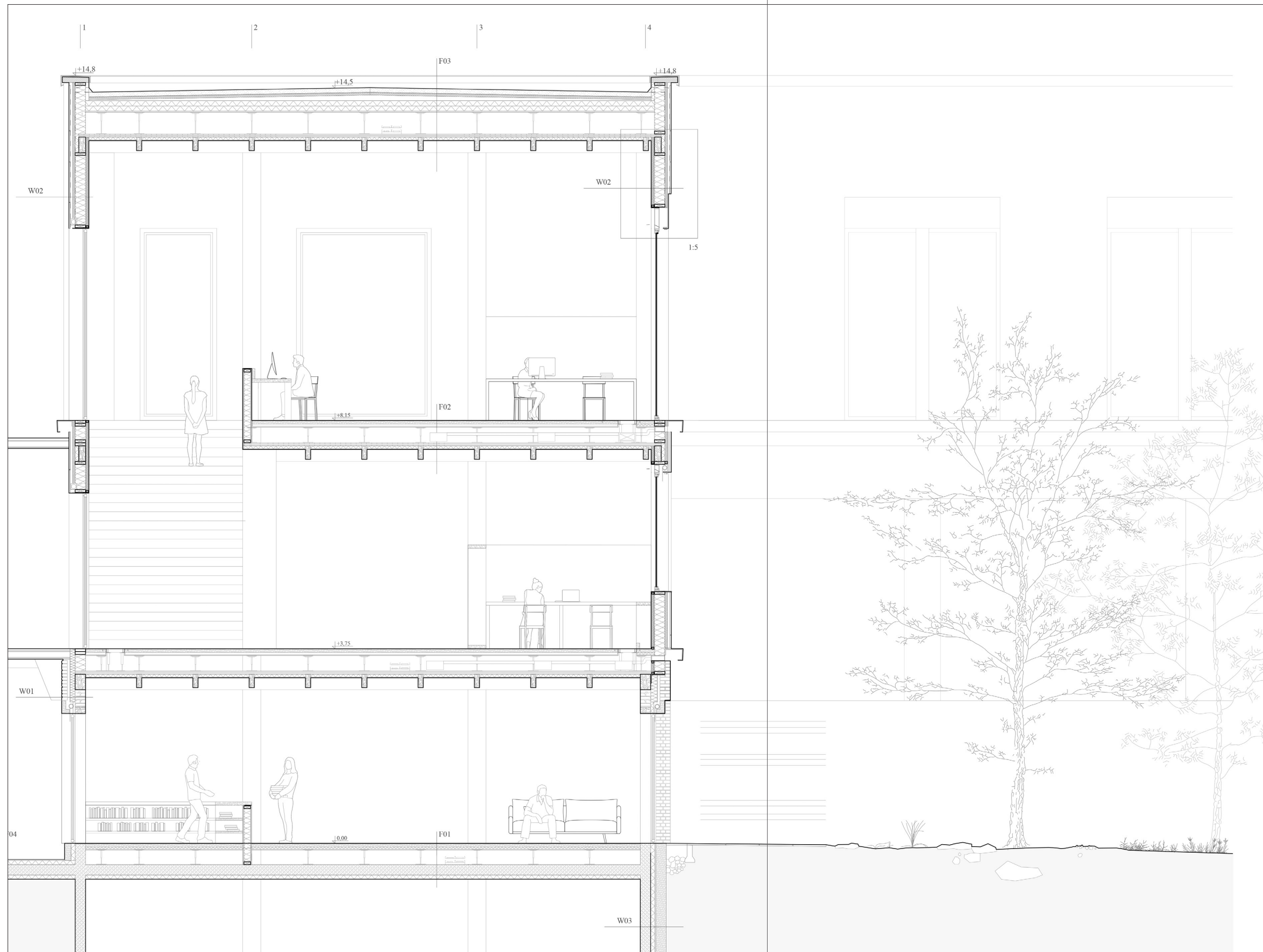
Existing staircase in the Asplund's building.

This staircase, although resembling the existing poche in the Asplund's building, is more democritized, wider and accessible.

It is the edge of a building a threshold between Asplund's building and the extension, leading the users to the top of the building.



View of the main stairs



F01:
 8mm flooring
 60mm screed with underfloor heating
 polythene separating layer
 40mm impact sound insulation
 20mm composite wood boarding
 300mm hollow-floor construction
 200mm reinforced concrete floor
 100mm insulation

F02:
 8mm flooring
 60mm screed with underfloor heating
 polythene separating layer
 40mm impact sound insulation
 20mm composite wood boarding
 300mm hollow-floor construction
 60mm CLT floor

F03:
 90mm extensive growth substrate
 5mm filter fabric
 50mm drainage element
 5mm root-proof layer
 35-50mm tilted thermal insulation
 5mm waterproof insulation
 200 mm thermal insulation
 5mm damp-proof course
 20mm composite wood boarding
 420mm hollow-floor construction
 60mm CLT floor

W01
 110mm facing brickwork with recycled bricks in running bond, pointed and slurried with lime mortar.
 50mm ventilation gap
 100mm thermal insulation
 200mm load-bearing wall from recycled bricks

W02
 30mm ceramic tiles external wall cladding
 40mm ventilation layer with metal cladding frame
 5mm wind barrier
 50mm thermal insulation
 200mm construction timber with variable insulation material
 5mm vapour barrier
 12.5mm gypsum fibre board

Auditorium

Where the building meets the hill

The first floor is also where the building meets the hill. In the back I prpose this opening, which would serve as a gate to the hill, but also a foyer to the auditorium, which would be placed partially under-ground, facilitating for an optimala lighting experience there.

The competition brief highlights the need for an auditorium, which the library currently lacks. I propose that the auditorium operates independently with an additional entrance on this side.



View of the back entrance



View of the back entrance to the auditorium



View of the back entrance to the auditorium

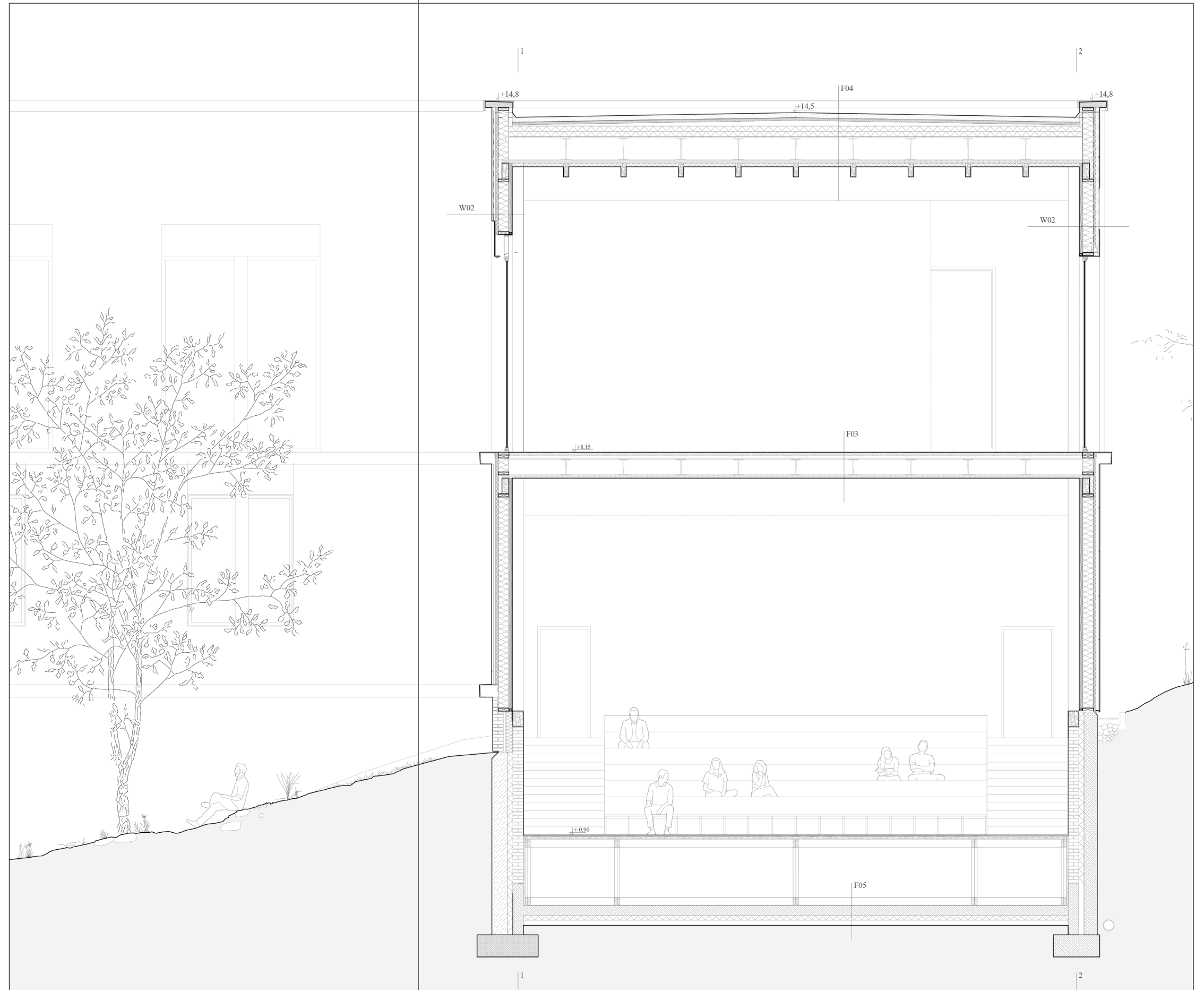
F02:
 8mm flooring
 60mm screed with underfloor heating
 polythene separating layer
 40mm impact sound insulation
 20mm composite wood boarding
 300mm hollow-floor construction
 60mm CLT floor

F03:
 90mm extensive growth substrate
 5mm filter fabric
 50mm drainage element
 5mm root-proof layer
 35-50mm tilted thermal insulation
 5mm waterproof insulation
 200 mm thermal insulation
 5mm damp-proof course
 20mm composite wood boarding
 420mm hollow-floor construction
 60mm CLT floor

F05:
 timber auditorium construction
 200mm reinforced concrete
 100mm thermal insulation
 100mm gravel layer

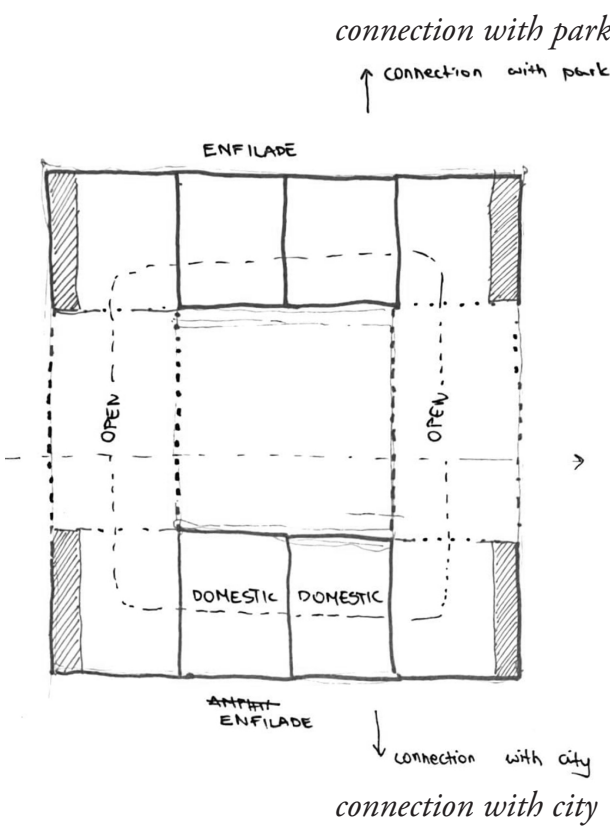
W01:
 110mm facing brickwork with recycled
 bricks in running bond, pointed and
 slurried with lime mortar.
 50mm ventilation gap
 100mm thermal insulation
 200mm load-bearing wall from recyc-
 led bricks

W02:
 30mm ceramic tiles external wall
 cladding
 40mm ventilation layer with metal
 cladding frame
 5mm wind barrier
 50mm thermal insulation
 200mm construction timber with
 variable insulation material
 5mm vapour barrier
 12.5mm gypsum fibre board



Interiors

with the Stockholm City Library



A critical question throughout my design has been whether a library should be more flexible in its spatial organization to make users feel more comfortable. It is crucial to position a modern public library on a spectrum between collective and individual needs, defined

and undefined spaces, and clear purposes versus open-ended use. I aimed to address this in my design by providing more open areas with a rigid layout of tables and more enclosed spaces that allow for creative use.



View of the open space, overlooking the stairs



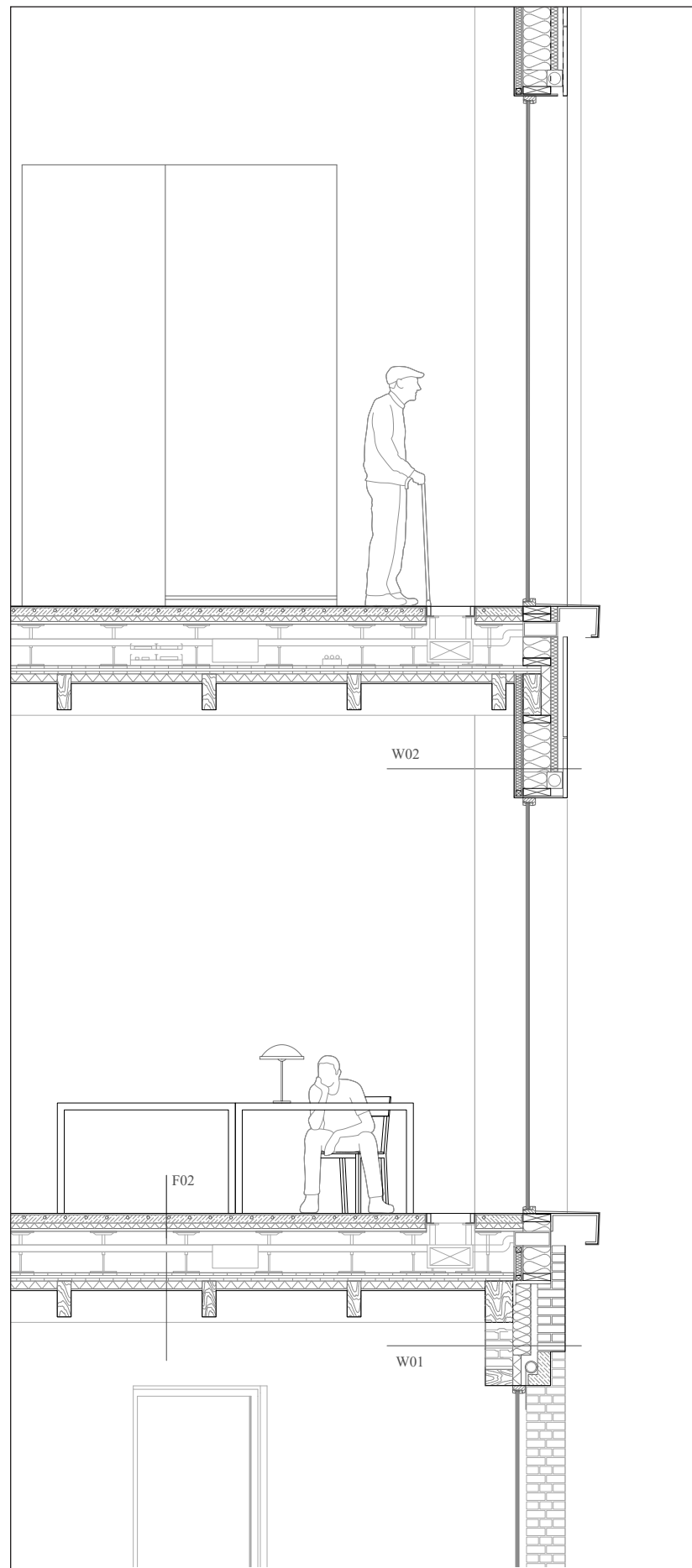
View of the enfilade of the domestic spaces



View of the more domestic space

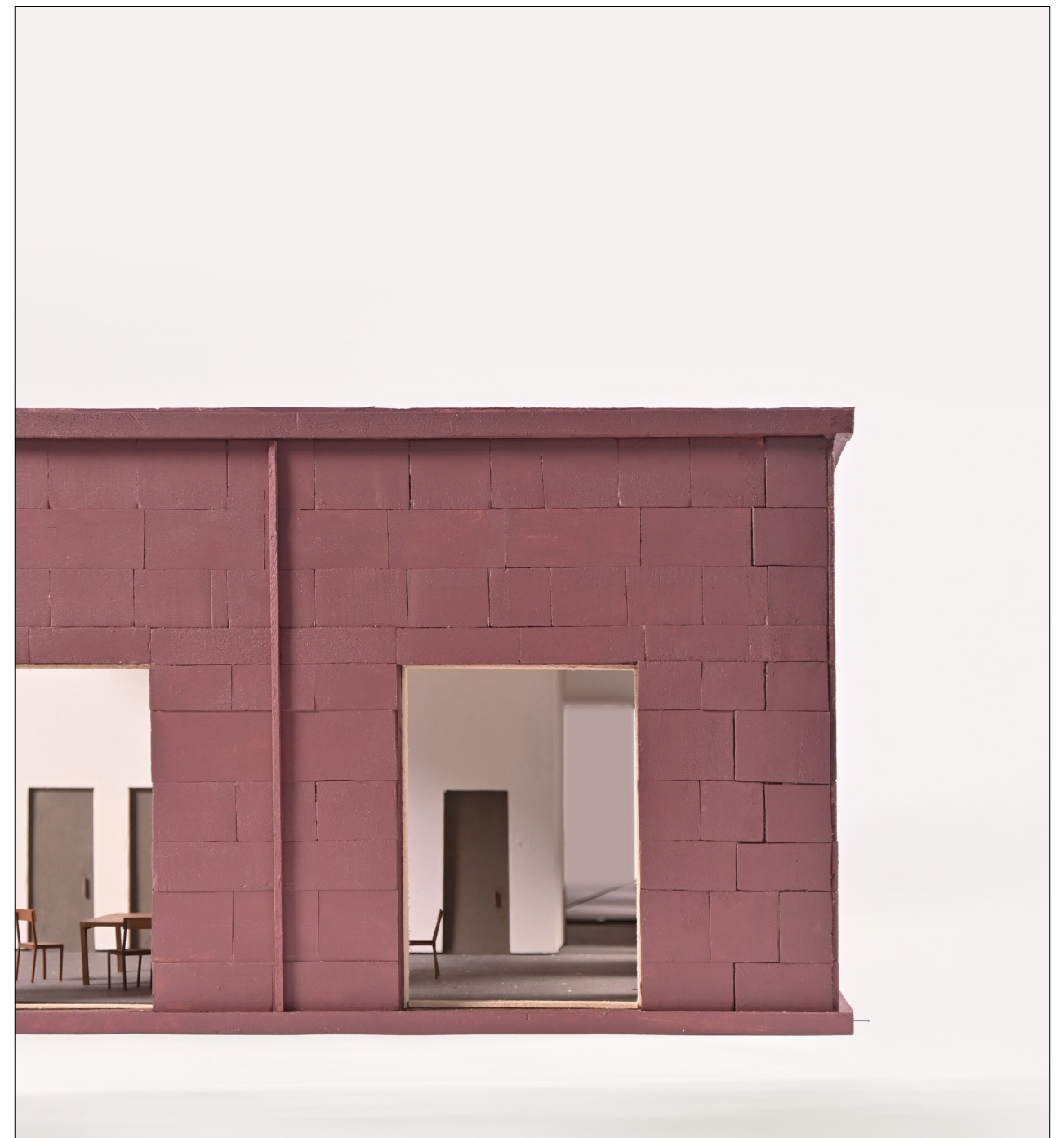


View of the more domestic space



Facade section |
original scale 1:20

Facade image |
original scale 1:20

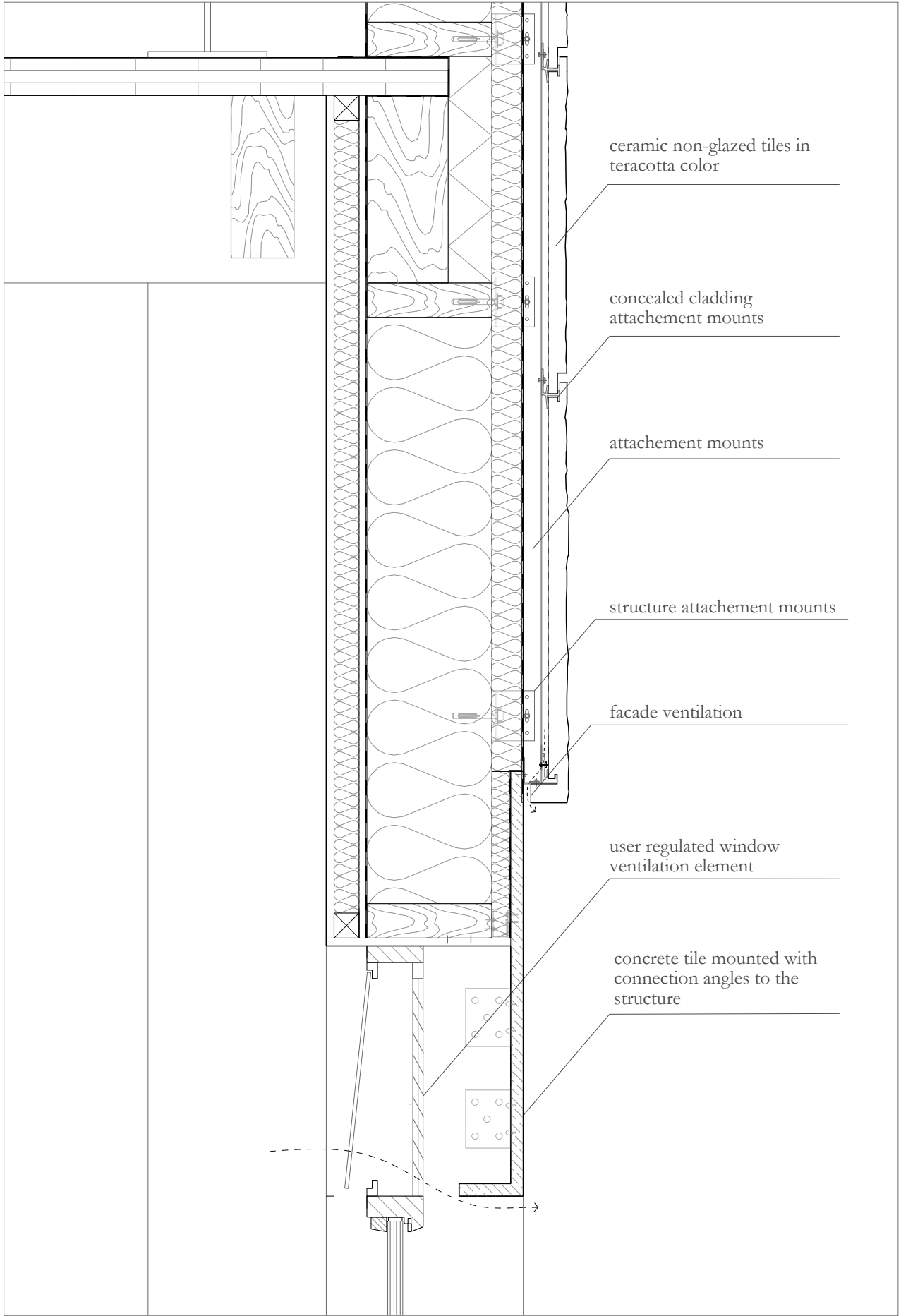


Details

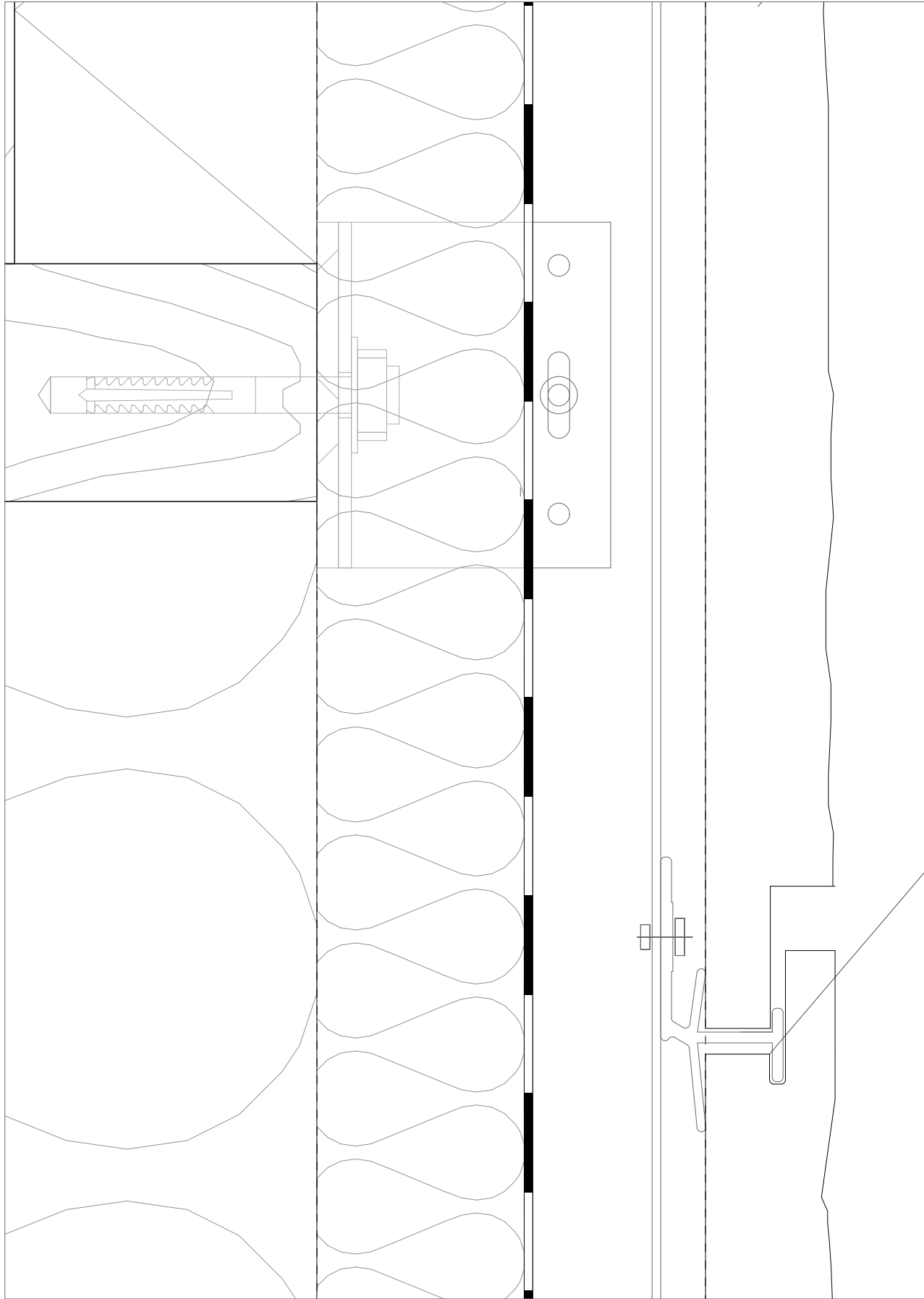
with the Stockholm City Library

The building is carefully positioned among other architectural works, and I wanted to reference the surroundings in its details. Drawing inspiration from the patterns of the third annex and the library, I propose mounting ceramic tiles with similar gaps, as shown in the details.

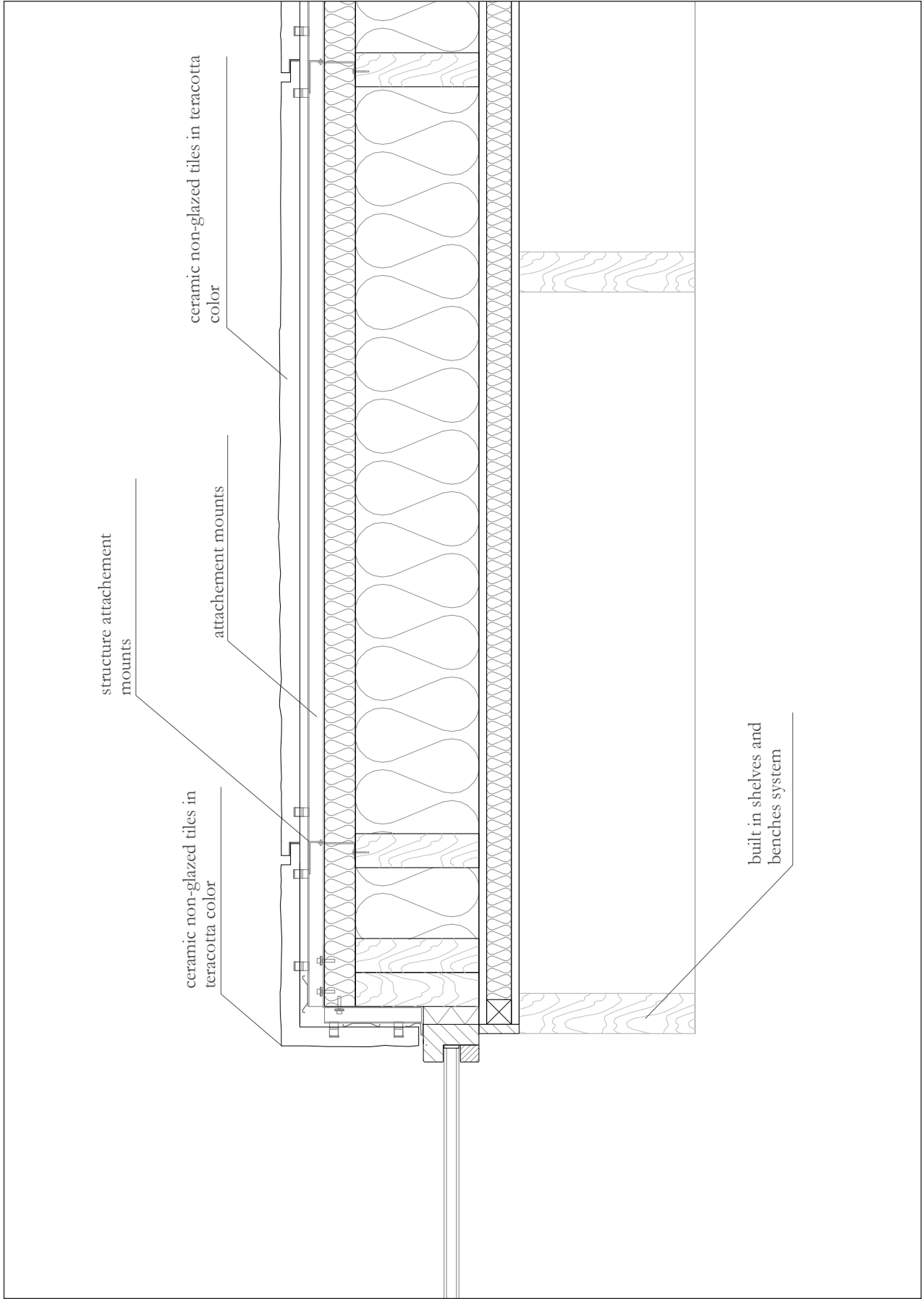
These drawings take on the matter of proximity for the last time. From the intimacy of neighbouring buildings, the dialogue of hues and proportions, to the subtle closeness of each meticulously placed tile.



Facade detail | Original scale 1:5



Facade detail | Original scale 1:1



Facade detail | Original scale 1:5