

# CITIES FOR PEOPLE - OF TOMORROW

PROMOTING URBAN VITALITY IN THE MASTERPLANNING PROCESS OF ECOPARK NEW TOWN HANOI, VIETNAM

*\* Big question: How to create cities for people from scratch?*

R.A. PRADANA  
4622553

Mentor:  
Dr. Ir. Gregory Bracken

Study sponsored by LPDP Indonesia

The main task for this graduation project is to seek the way to design a vital city centre of Ecopark New Town that promotes urban vitality through the masterplanning process. The first step to do that is by investigating how do vital city centres work in Hanoi. The investigation is done by examining the accessibility aspect - where the most accessible places are located and which of them are accessible based on the transit coverage. Accessibility in this graduation project is analysed using the Space Syntax simulation.

The next step is to clarify the study through on-site observations. The on-site observations here are performed using the observation tools from Gehl Institute in the three blocks that have been defined in the context analysis: Hanoi city centres (R800, R2700, and Rn). The two tools that this project used in performing the on-site observation are: people moving count and twelve urban quality criteria. The result showed that in most streets, there are gaps between the two: the streets are lively, but the qualities are bad. The exception is on the car-oriented city centre of Hanoi where the qualities are better, but the streets are deserted. Apart from the quantitative observation (Gehl Institute tools), qualitative observation is done to investigate the principles of urban vitality that occur in each city centre. These principles will then be used in the proposed design.

The design is then being evaluated using 4 personas, each with specific occupation, specific living condition, and specific demands. The compositions are consciously taken to the extreme to fully test the design. The evaluation will be demonstrated through how each persona will use the spaces in the city centre of Ecopark from the start of the day towards the end of the day. This evaluation is crucial to combat the status quo of Hanoi new towns which rarely consider how the spaces are actually being used.



Figure 1. View towards the future LRT Station

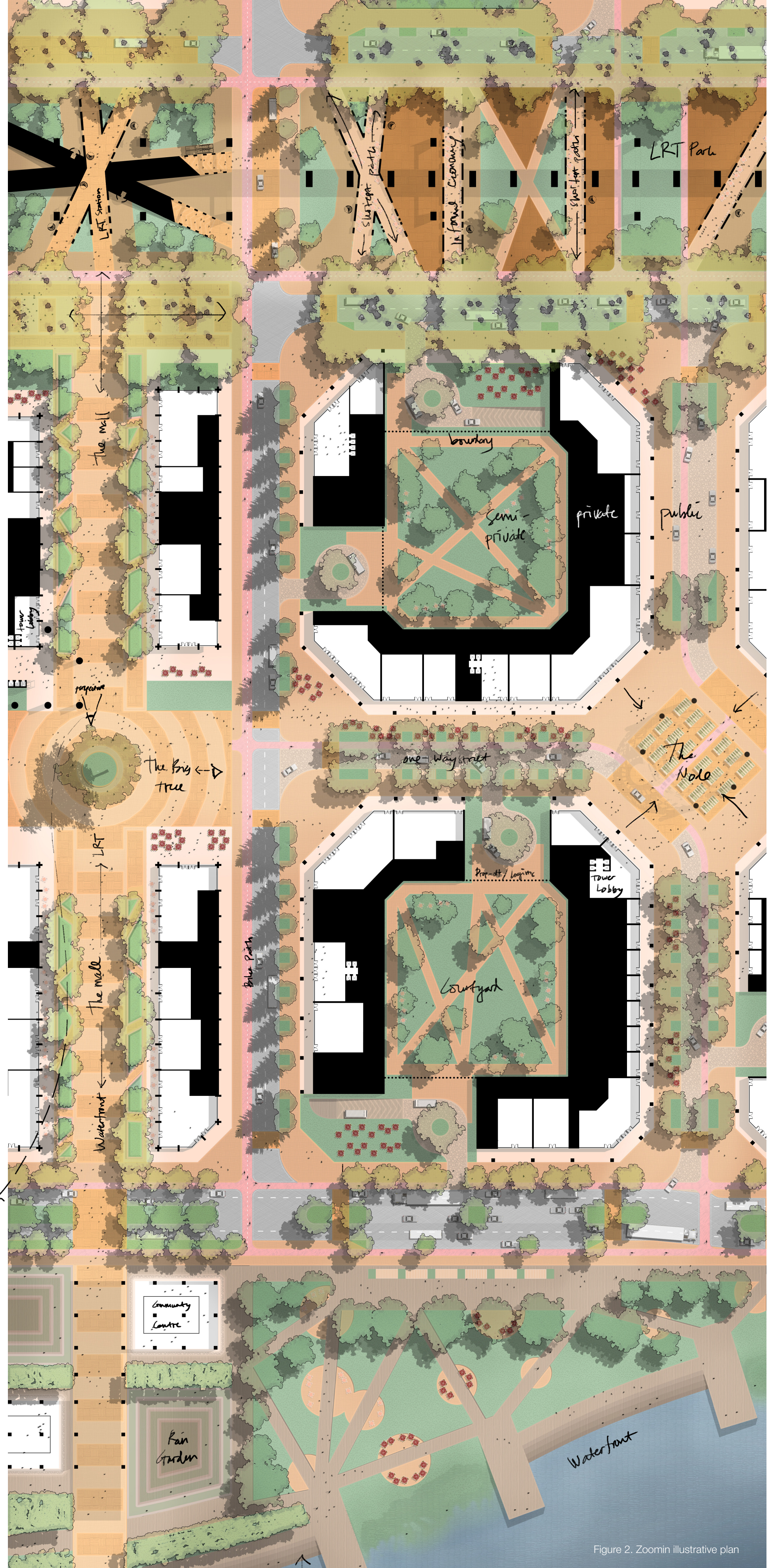


Figure 2. Zoom-in illustrative plan

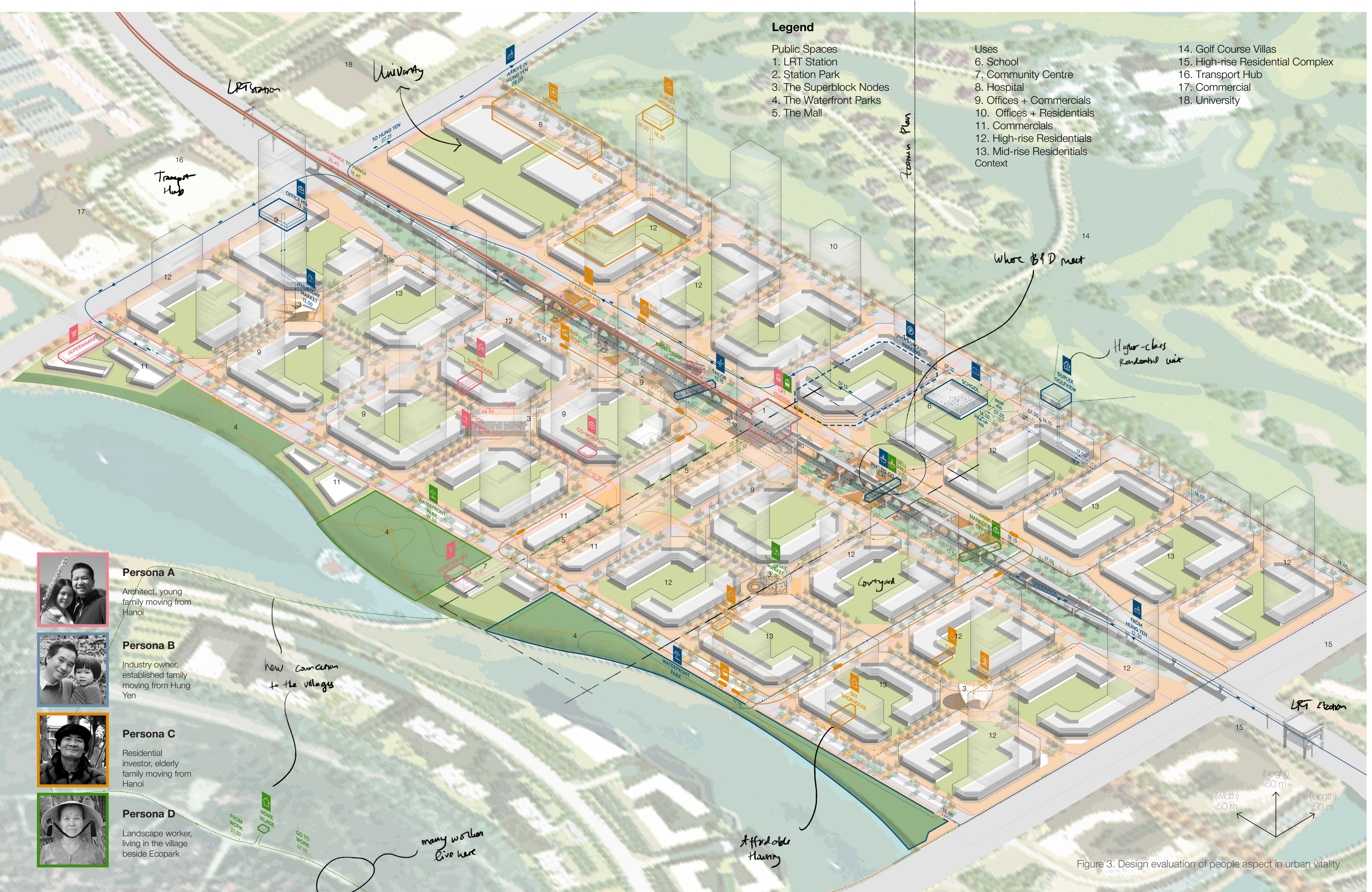


Figure 3. Design evaluation of people aspect in urban vitality

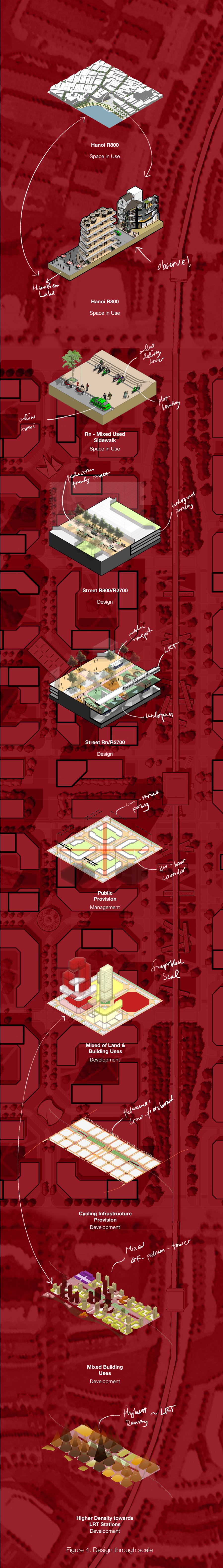


Figure 4. Design through scale

- Persona A**  
Architect, young family moving from Hanoi
- Persona B**  
Industry owner, established family moving from Hung Yen
- Persona C**  
Residential investor, elderly family moving from Hanoi
- Persona D**  
Landscape worker, living in the village beside Ecopark
- New Countryside to the villages*
- many women live here*
- Affordable Housing*