

# P5 PRESENTATION

Interiors Buildings Cities Graduation Studio

Space of Collection

Xiao Sun  
4502787  
2017.06.28

# CONTENT

01 Research and Concept

02 programme and Project targeted

03 Design and drawings

**01**

Research  
and  
Concept

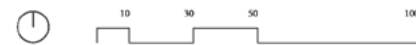
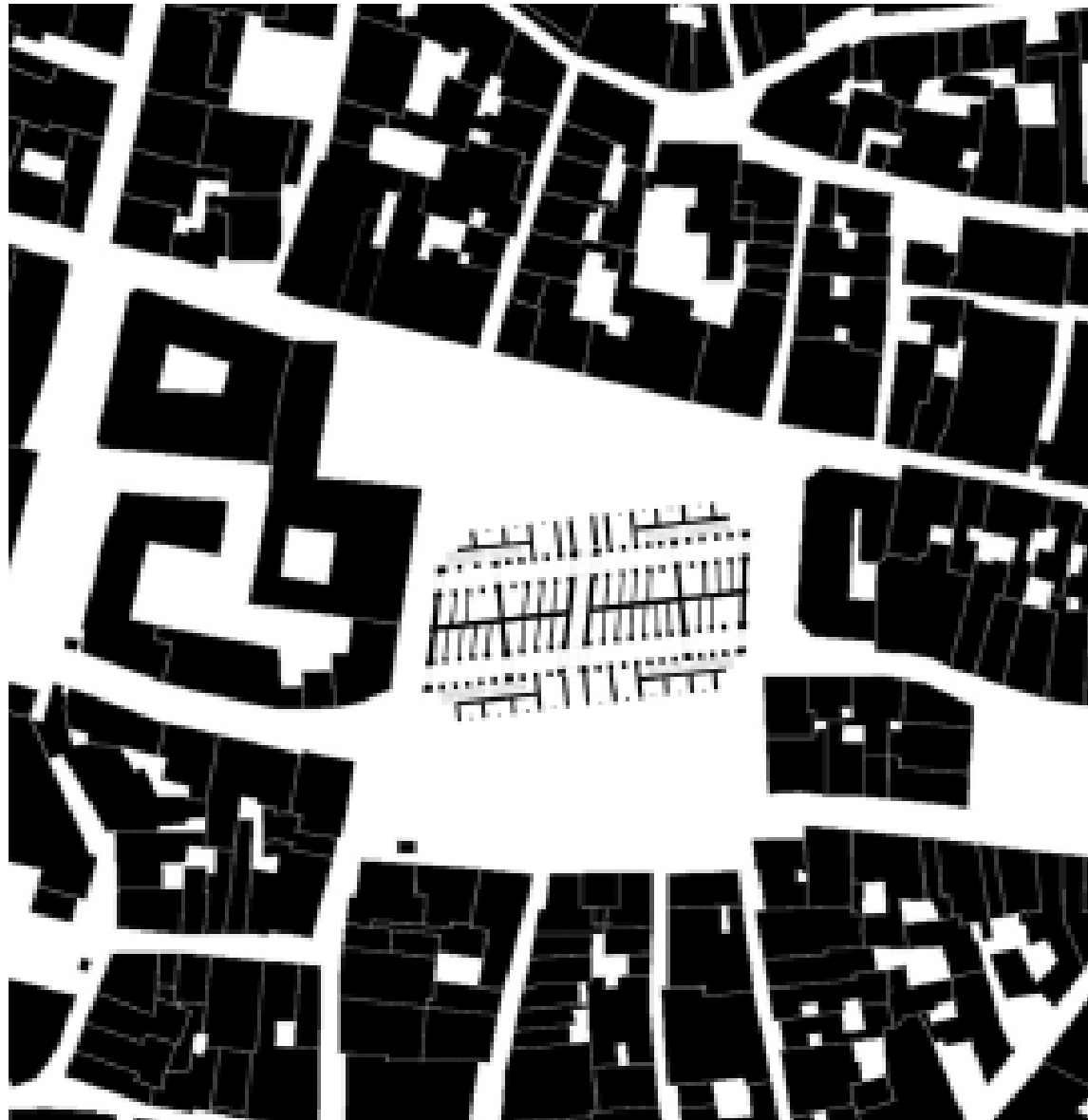
## Precedent study



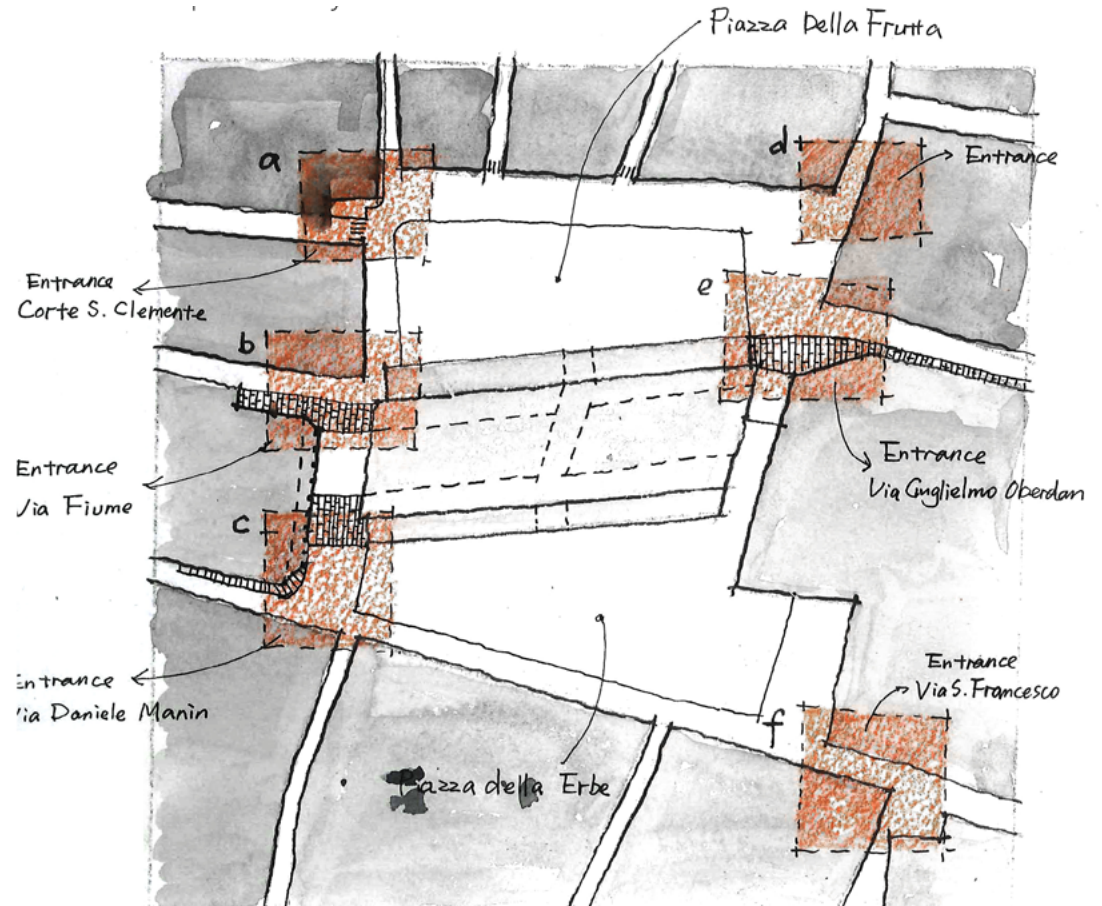
Palazzo della Ragione



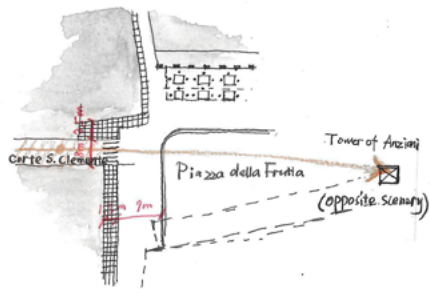
## Site Plan



# Square & Entrance



Entrance A

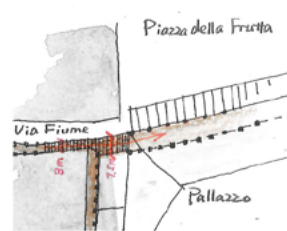


Plan of the Entrance A



View from Cort.S.Clement

Entrance B.

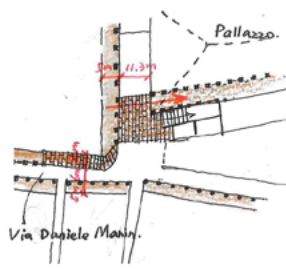


Plan of the Entrance B



View from Via Fiume

Entrance C



Plan of the Entrance C



View from Via Daniele Manin

Entrance D

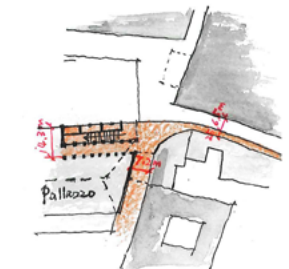


Plan of the Entrance D



View from Via Marsilio de Padova

Entrance E



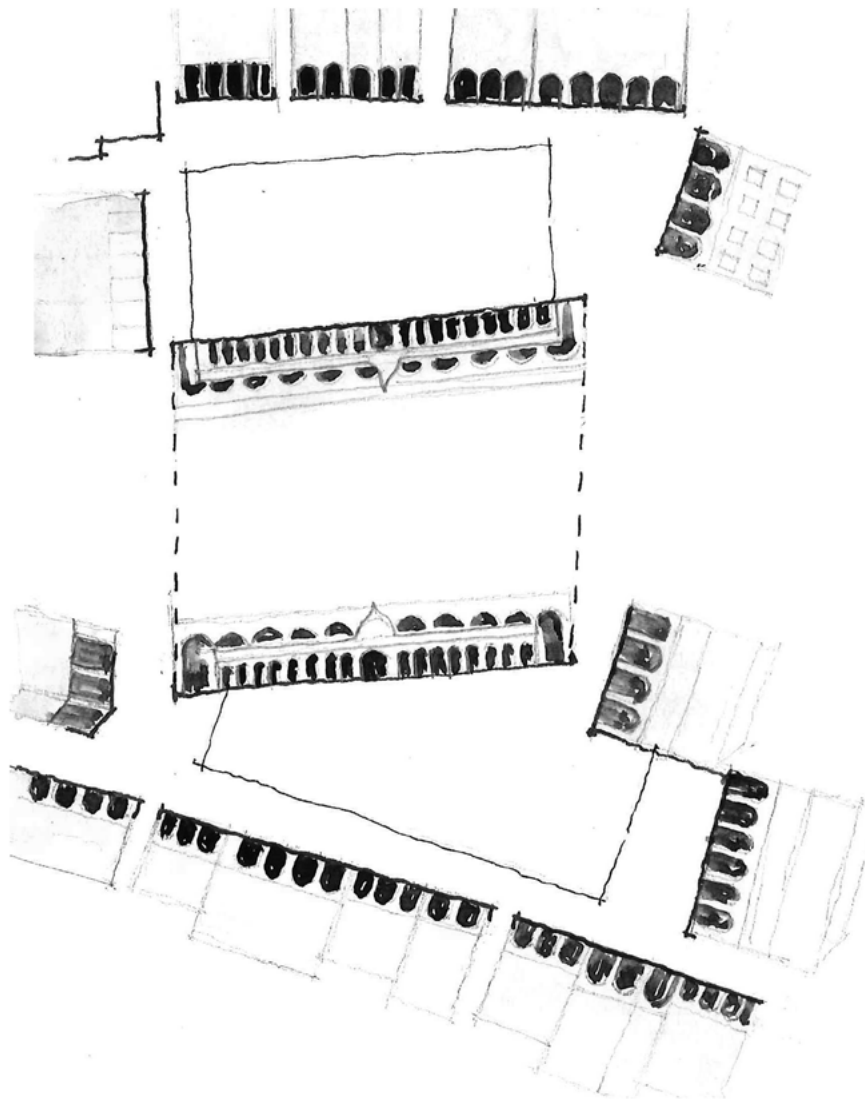
Plan of the Entrance E



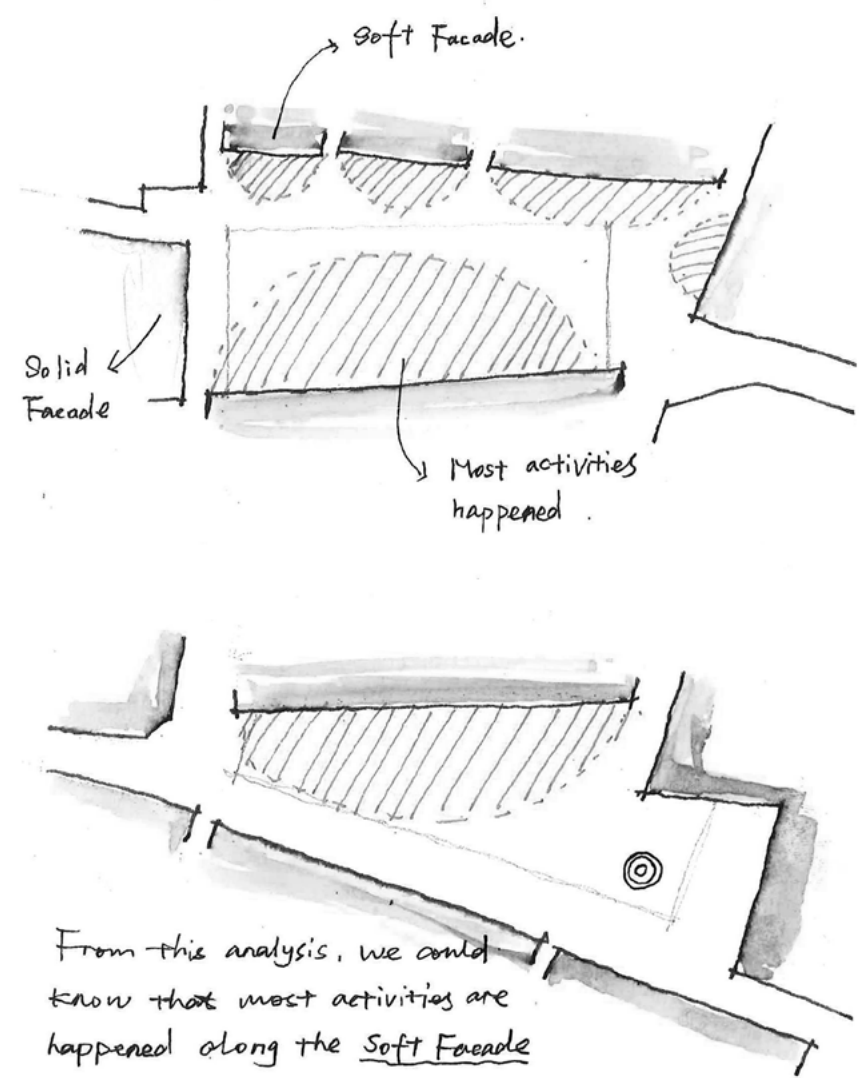
View from Via Guglielmo Oberdan

## Space

Facade along the piazza



Activities happened along the facade

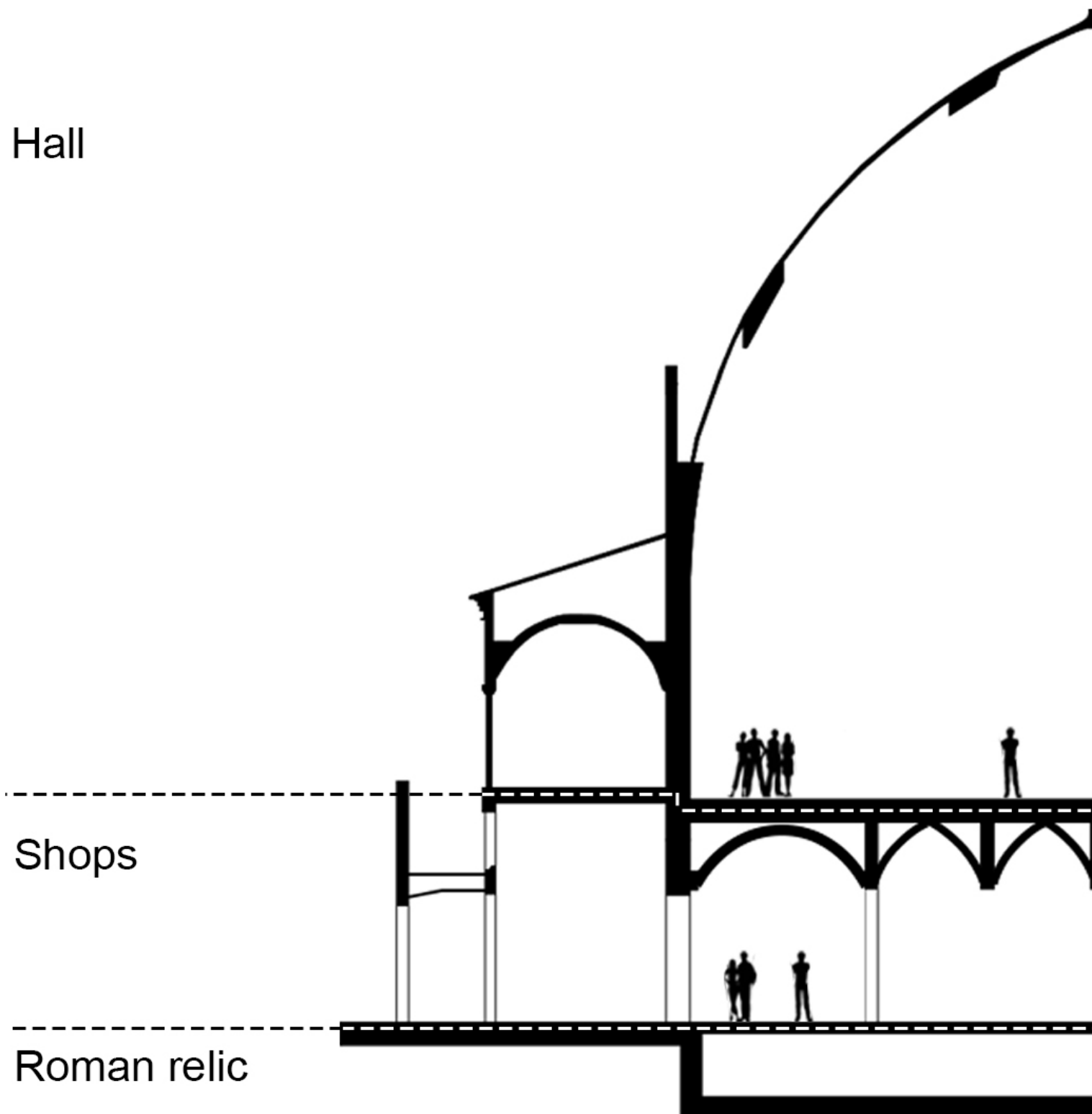


From this analysis, we could know that most activities are happened along the Soft Facade

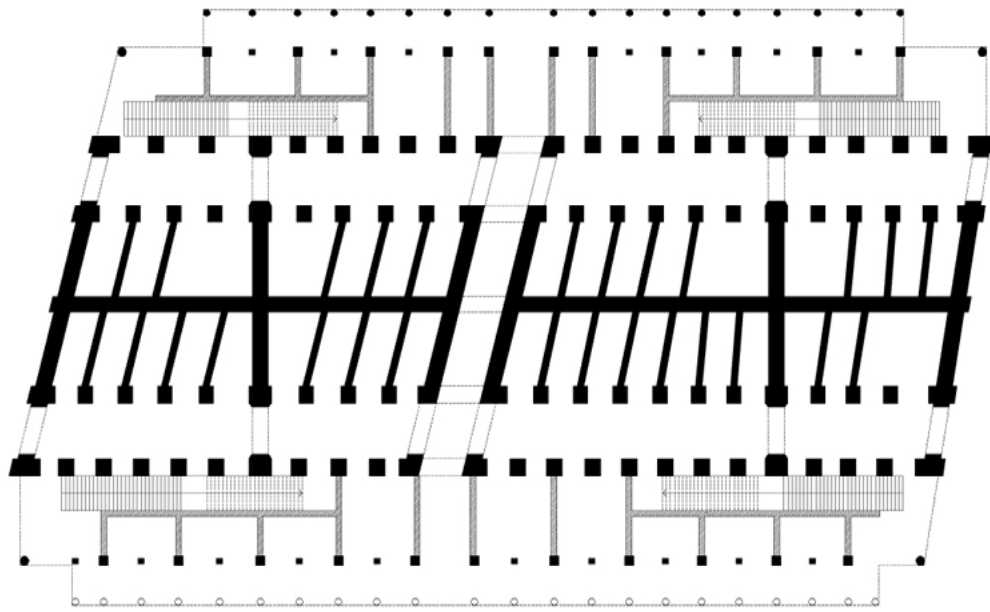


Plaza in front of the palazzo

Current Function

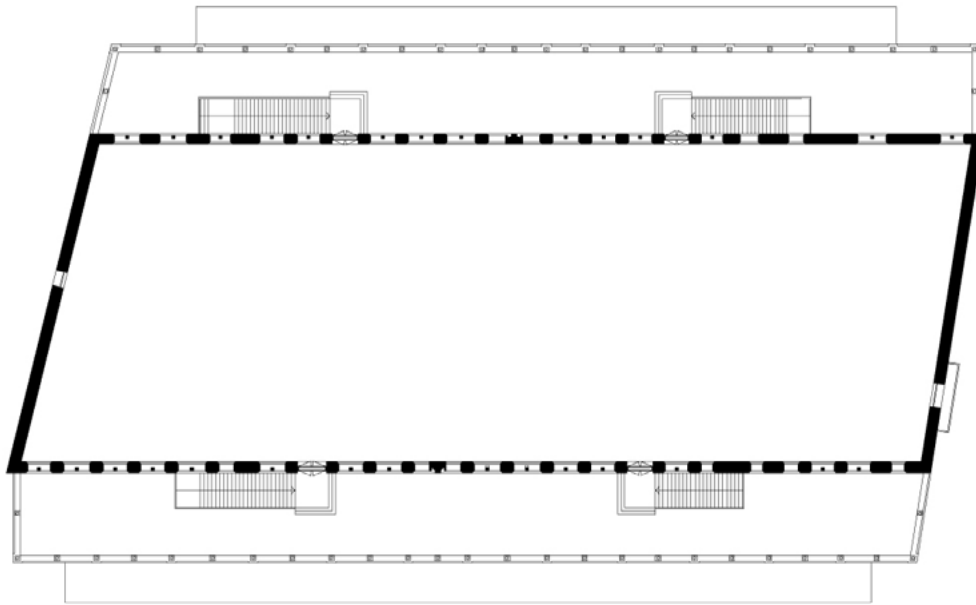






Ground floor 1:500





Frist floor 1:500



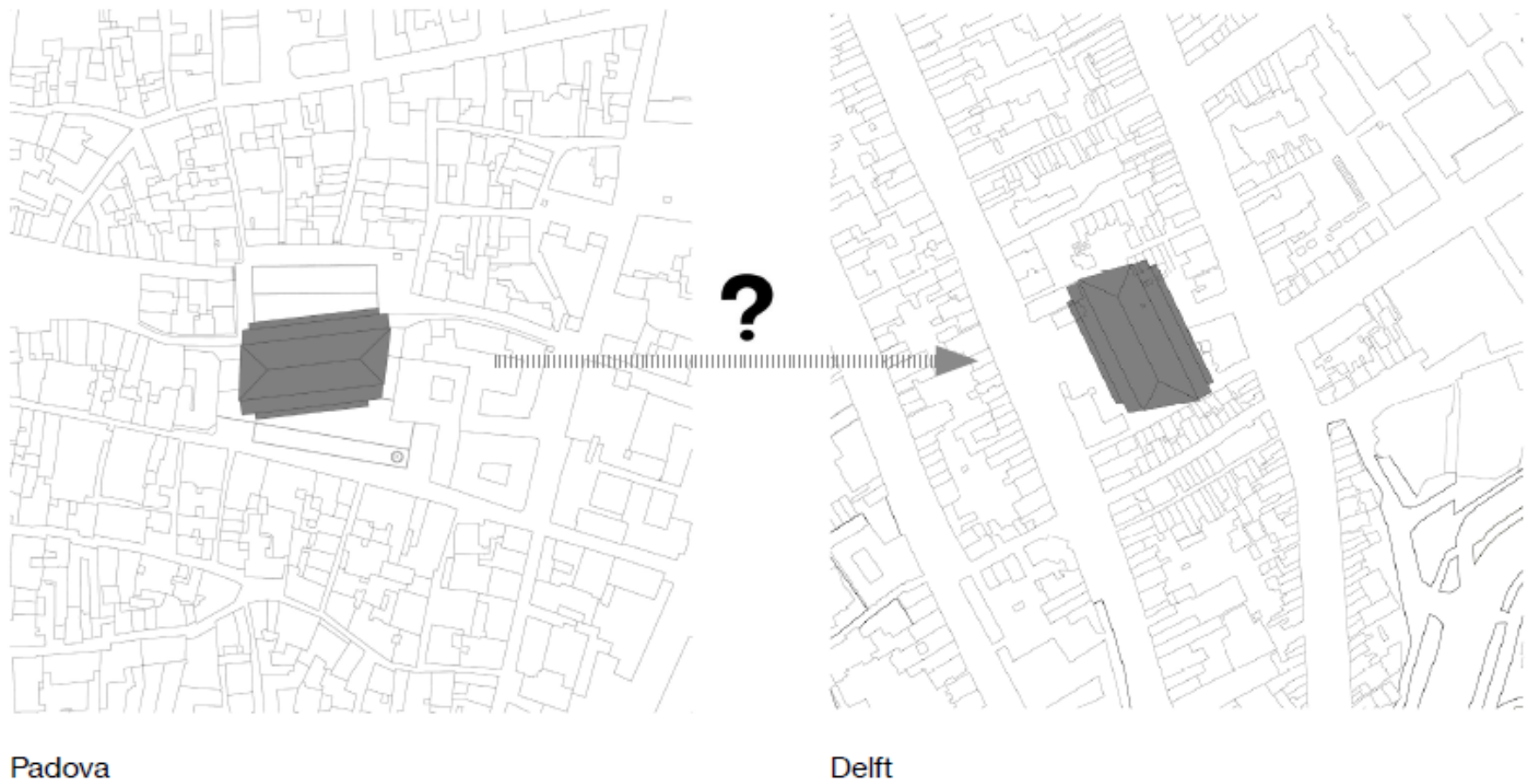




Interior atmosphere

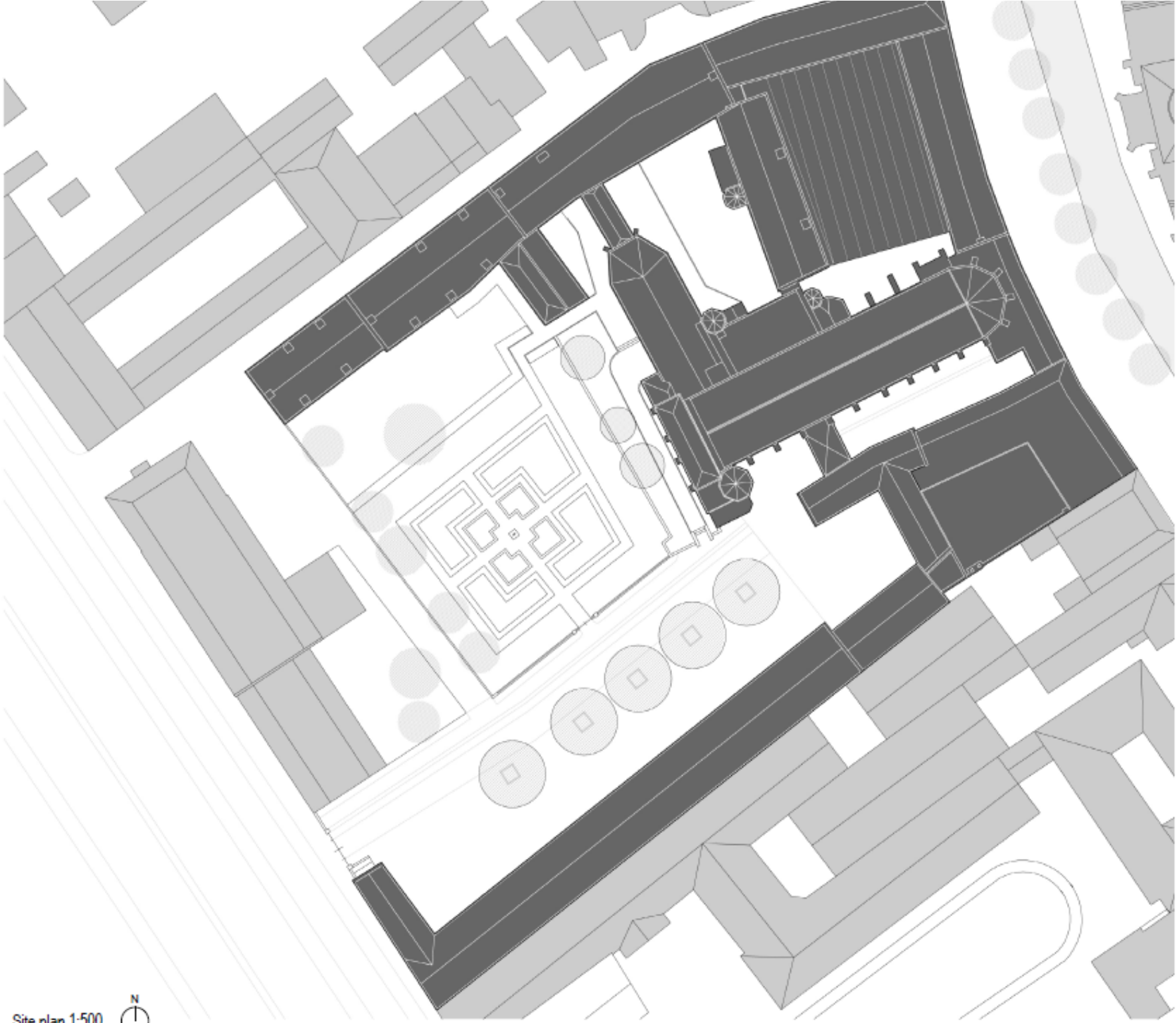



## From the precedent to the site



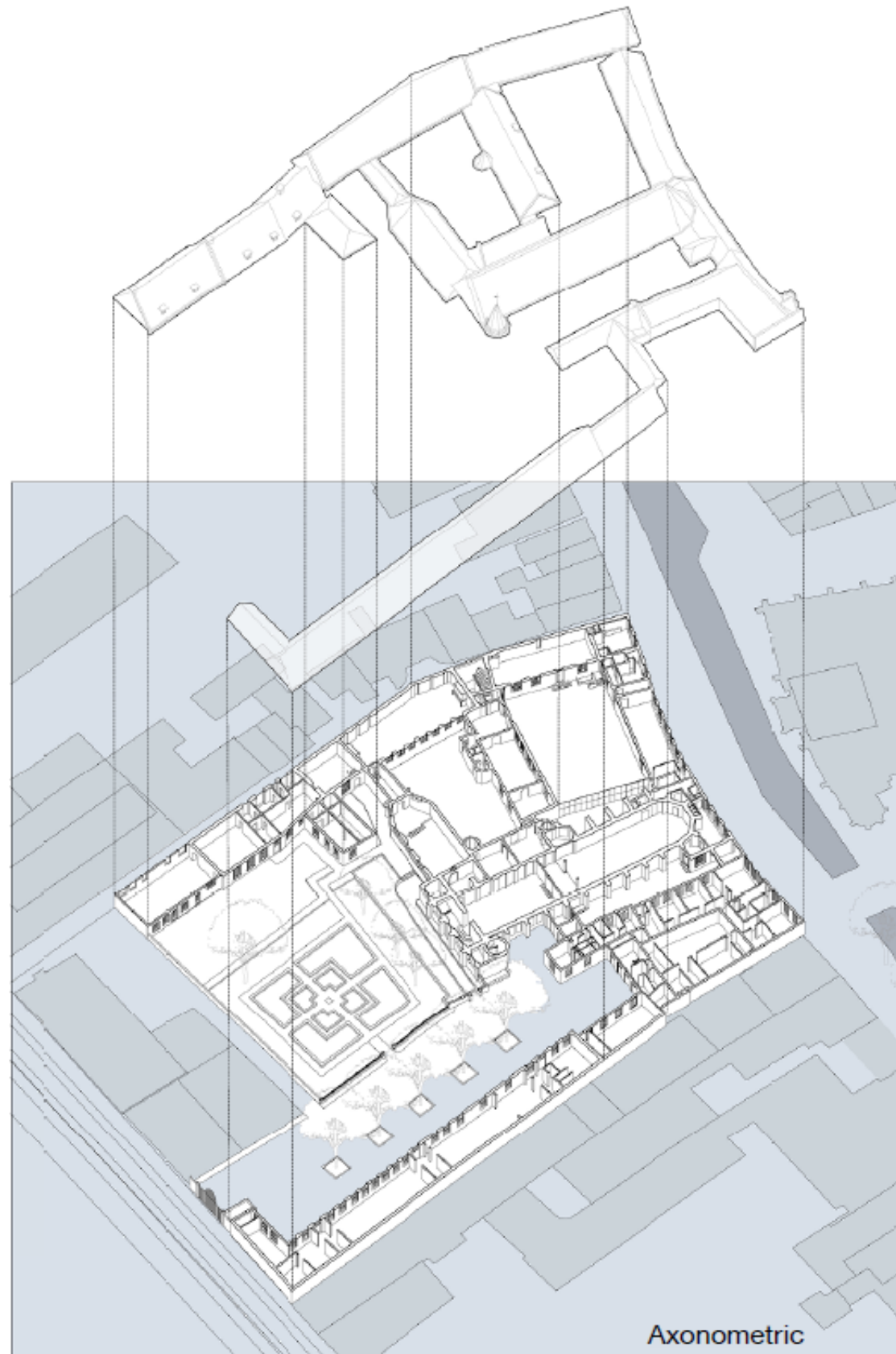
- 1 what can we learn from the precedent
- 2 what do we need on site

# Prinsenhof

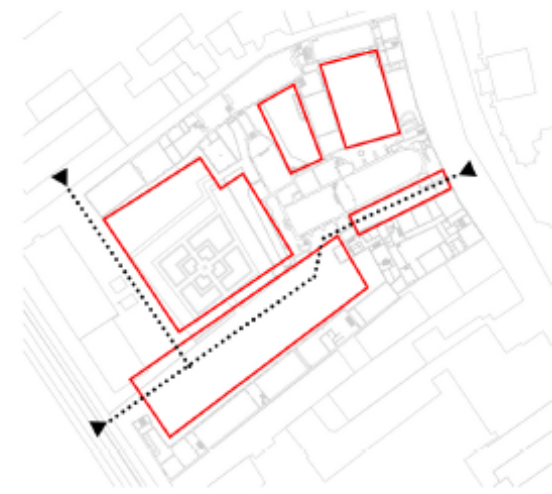
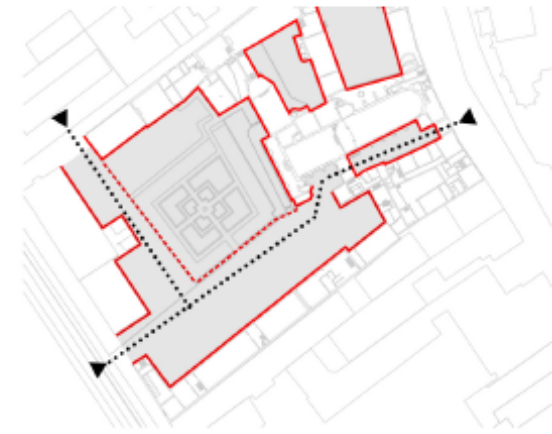
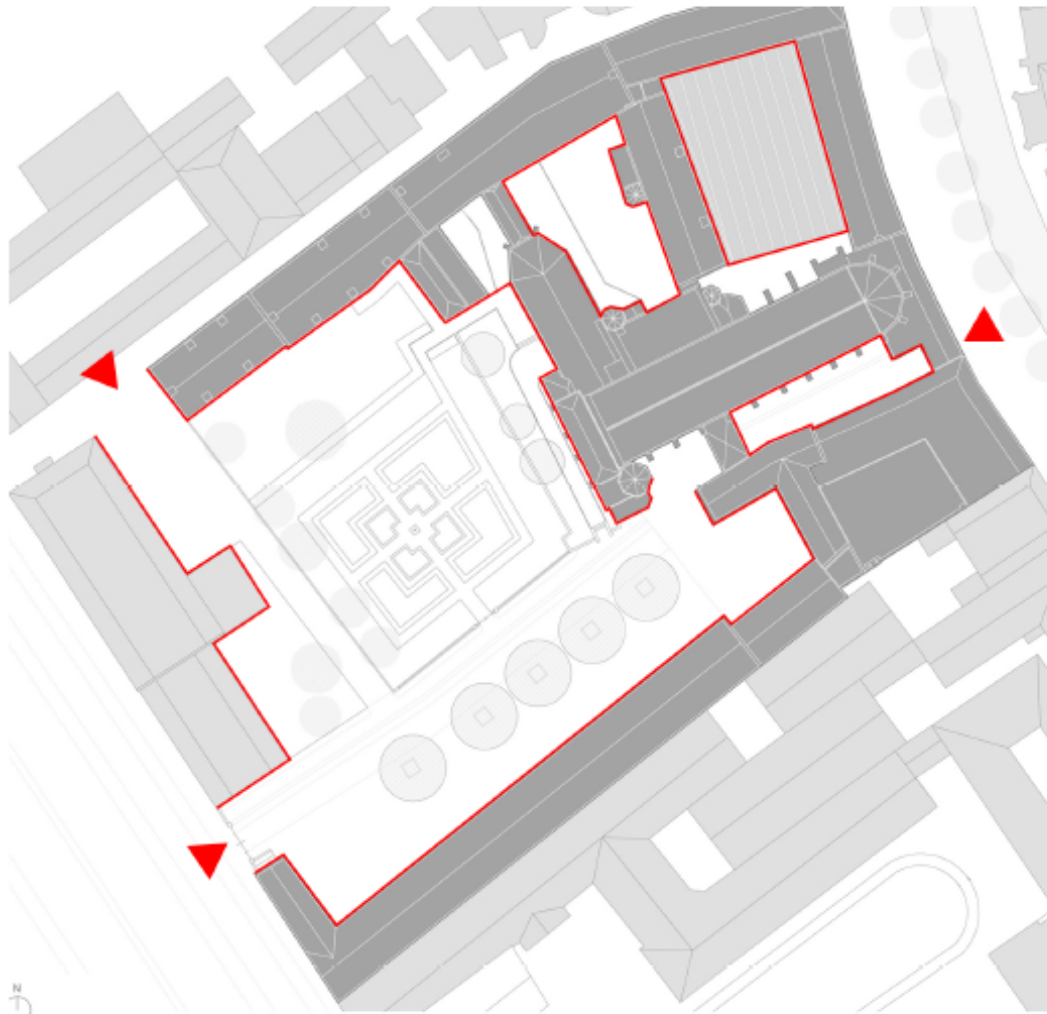


Site plan 1:500 

## Function of Prinsenhof cluster



## Space of Prinsenhof cluster



The sequence of going through a narrow alley from Oude Delft and then arriving at the open air of Sint Agathaplein is also one of the characteristic experience of the Prinsenhof urban conglomeration. Lined up with trees, the Sint Agathaplein is a square stretched from east to west, where a gallery and terrace cafe could be found. To the north of the square is an enclosed garden, fully planted with trees and lawns, with a statue of Willem of Orange in the centre. Access from the east of the garden leads to the inner yard of the museum. Some little doors, almost unassuming, along this access, herald the hidden basement of the building, which is used as a restaurant.

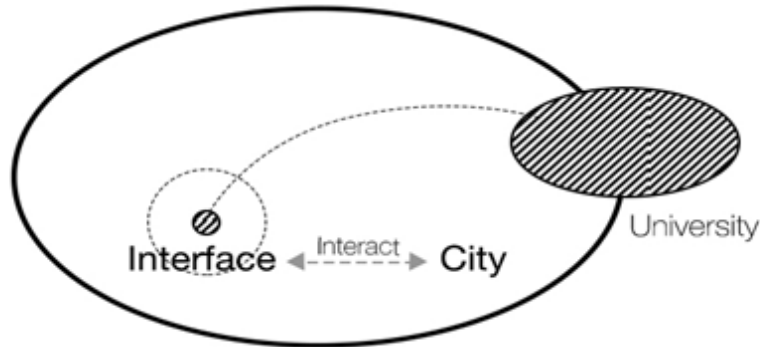




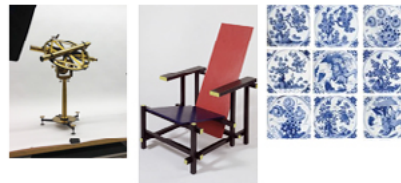
**02**

programme  
and  
Project targeted

The Relationship between history and future  
 between city and university  
 between residents and students



**Delft Collection**  
 Delft collections are representative of the city and the university, which show the brilliant history of the city and the university. They tell the stories about the past.



History.....→ **ARCHIVE**

**Residents**



Imaging that as a resident, you are surrounded by Delft collection and listen to a lecture about the latest research outcome of TU Delft



**Delft University of Technology**



**Students**

Imaging that as a student, you are surrounded by Delft collection and display your design work or research achievement.

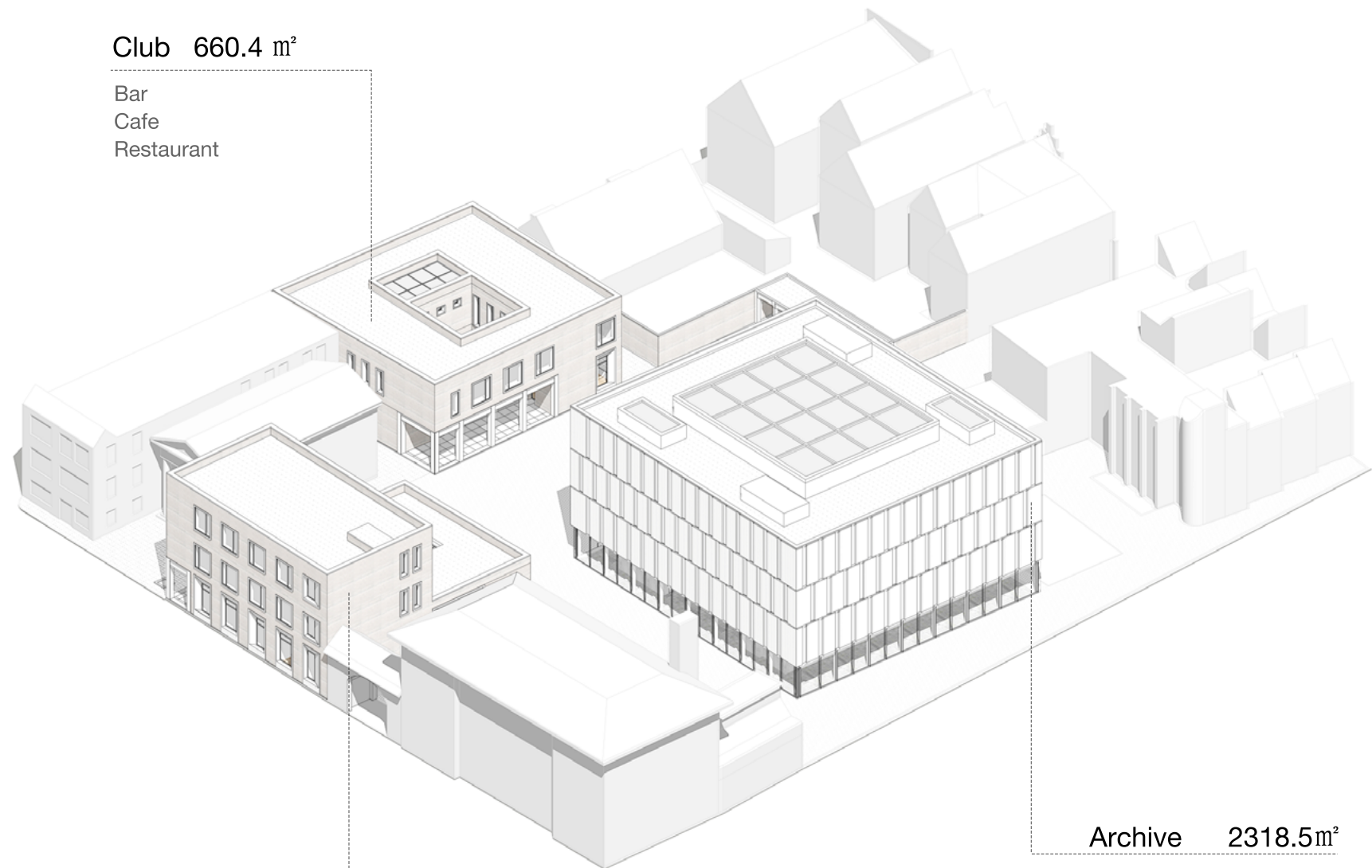
**LECTURE HALL** ←..... Future



**TU Delft Research**

Delft University of Technology has many the latest outcomes of research in different field. The university has responsibility to propagate these outcomes to residents, companies and local government.

## Programme



**Club 660.4 m<sup>2</sup>**

Bar  
Cafe  
Restaurant

**Study center 990.2 m<sup>2</sup>**

Reading room  
Studio (music/art/dance/performance, etc)

**Archive 2318.5m<sup>2</sup>**

Atrium (multifunction hall)  
Close-shelves storage room  
Open-shelves storage room  
Study space



## How to fully use the Archive



Sala  
Palazzo delle Ragione, Padova



## CREA cultural center



# Studium Generale


SG TU Delft
CALENDAR WEEKLY EVENTS SG PARTNERS ABOUT SG

Activity

EVENTS

RECORDINGS

COLUMN




SCIENCE

Upcoming event

JANUARY 17, 2017, 20:30 - 22:00 @ THEATER DE VESTE

SCIENCE BATTLE - ALLE ANTWOORDEN OP NIET GESTELDE VRAGEN

Jonge wetenschappers dagen elkaar uit op het podium. Wie heeft het beste onderzoek? En wie presenteert dit het beste aan u? Presentator René M. Broeders opent de avond en loopt de actuele nieuwtjes uit de wetenschap door. De ScienceBattle heeft een jury nodig, het publiek speelt bij deze jury de grootste rol. De promovendi worden [...]




LEBANON:  
Life in a Refugee Camp

Recording Available

DECEMBER 13, 2016, 12:40 - 13:30 @ AULA, ZAAL A

LEBANON: LIFE IN A REFUGEE CAMP

LEBANON THROUGH THE EYES OF A STUDENT By Marijke Panis Entrance free/free sandwich Last summer a lot of things happened in Europe; it made civil engineering student Marijke Panis realize that we all have to live with insecurities. Although we have only recently been experiencing a sense of insecurity in Europe, we are all well [...]



Blog post

DECEMBER 6, 2016

VAN HASSELT LECTURE 2016: BIG DATA, HUMAN RIGHTS AND THE ETHICS OF SCIENTIFIC RESEARCH

COEN VERMEEREN

Big Data, Human Rights and the Ethics of Scientific Research John Tasioulas ABC Religion and Ethics Australia Updated 1 Dec 2016 (First posted 30 Nov 2016) John Tasioulas is the Director of the Yeoh Tiong Lay Centre for Politics, Philosophy and Law at King's College, London. This article is adapted from the 2016 Van Hasselt Lecture, which he recently [...]



Verkiezings  
debat:  
Onderwijs  
in 2042

Met Lijst Beta, ORAS en prof. dr. ir. Rob Muddé

Upcoming event

JANUARY 18, 2017, 12:45 - 14:00 @ AULA TU DELFT, FOYER

VERKIEZINGSDEBAT TU DELFT 175: ONDERWIJS IN 2042

PROF. ROB MUDDÉ, MATHIAS DE KONING (ORAS), SALOMON VOORHOEVE (LIJST BETA)

In het kader van het lustrum 175 jaar TU Delft organiseren Studium Generale en TU Delft Debating Club een serie verkiezingsdebatten. Twee maal tijdens de lunch en vlak voor de verkiezingen een groot slotdebat 's avonds in het Auditorium van de Aula. Het eerste lunchdebat staat gepland op 18 januari in de Foyer van de Aula [...]



Upcoming event

JANUARY 18, 2017, 20:00 - 22:00 @ PRINSENKWARTIER

INTELLIGENT VEHICLES DOOR PROF.DR. D.M. (DARIU) GAVRILA

DR. DARIU GAVRILA

Automotive zit midden in een technologische transformatie: Goedkope sensoren, krachtige hardware gepaard met geavanceerde algoritmen en big data, maken hooggeautomatiseerd rijden mogelijk - dit heeft de potentie de mobiliteit van de toekomst fundamenteel te veranderen. Hoe werkt de technologie? Wat zijnde drempels op weg naar de zelfrijdende auto? Hoe lang gaat het nog duren? Naast [...]



Upcoming event

JANUARY 26, 2017, 20:00 - 22:30 @ PRINSENKWARTIER

THORIUM MSR - KERNENERGIE ZONDER DE NADELEN

IR. THEO WOLTERS, IR. SANDER DE GROOT, PROF. ANNA SMITH, PROF. JILST SIETSMAN

Gesmoltenzoureactor-technologie en de hoofdrol van het Nederlandse onderzoek daarbij. Na het symposium over Thorium MSR (Molten Salt Reactor) in Delft in april 2015, met daarbij bijna alle MSR start-ups van de wereld als sprekers, is de ontwikkeling ervan in een stroomversnelling gekomen. Nederland sorteert daarbij voor op een hoofdrol, dankzij de leidende rol van de [...]



## Collage of concept



IMAGE OF ARCHIEVE

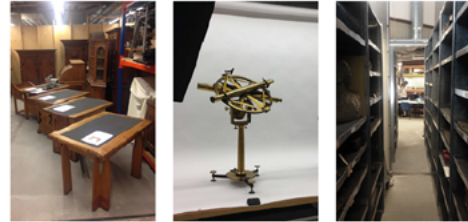


## Selected Collection

### THE SLUYTERMAN COLLECTION

location  
TU Delft Library basement  
collector  
Sluyterman, faculty of architecture  
topic  
Architectural artifacts, paintings and  
various design objects

start of the collection  
1895  
number of collected items  
1235  
total surface  
375 m2



The collection was founded by T.K.L. Sluyterman, a former professor of the faculty of architecture. Initially the collection was kept at Oude Delft 75, where Sluyterman taught decorative arts from 1917 until 1932. Over the years the collection grew, nowadays it contains paintings, drawings, books, ceramics, furniture, architectural models and fragments of buildings.

### RALLY PETERS COLLECTION

location  
TU Delft Library basement  
collector  
Cornelis Hendrik Peters  
(government architect)  
topic  
Topographical and architectural  
prints, reproduction of paintings

start of the collection  
1900  
number of collected items  
ca. 9000  
total surface  
375 m2



The Rally Peters Collection was founded by Cornelis Hendrik Peters, a Dutch government architect who researched on the development of Dutch cities. In this context, he collected a number of topographical prints which include also foreign countries such as Belgium, France Germany and England. In 1927 the collection was acquired by the Department of Architecture of the Technical High School Delft, with destination: visual material to support education.

### THE UNIVERSITY HISTORY COLLECTION

location  
TU Delft library basement  
collector  
Rene Hagman, TU Delft  
topic  
University history 1842-present  
start of the collection 1842

number of collected items  
ca. 170  
total surface  
ca. 545 m2



This University history collection consist of artefacts, busts, plaques and portraits of professors and dignitaries from the TU Delft and its predecessors: the Delft University, the Polytechnic School and the Royal Academy for Civil Engineers. The objects of the collection graced the lecture rooms or offices, or played a role in the board of the University.

### THE ROYAL DELFT COLLECTION

location  
Rotterdamseweg 196  
collector  
Royal Delft  
topic  
Ceramic objects

start of the collection  
1653  
number of collected items 64  
occupied area  
185m2



The Royal Delft, better known as 'De Porceleynse Fles' started its own collection of pottery and ceramics objects. from 1653 in the former factory site located in the city centre of Delft. Since the beginning, all the objects produced in the factory, have been hand signed with the initials of the Factory's director, therefore is possible to reconstruct the history of the objects just by referring to the name they display.

### THE CHAIR COLLECTION

location  
TU Delft Faculty of Architecture  
collector  
TU Delft  
topic  
Chairs

start of the collection  
1957  
number of collected items  
ca. 300  
total surface  
ca. 47 m2 on display



The collection started in 1957, when three students, Jelle Jellens, Gerrit Oorthuys and Kees Abers, came up with the idea of compiling a collection of chairs that could be used during design educational activities. The Faculty of Architecture, particularly the interior design chair, supported this collection of the students. A lot of chairs were purchased at the Waterlooplein open-air market and other second-hand markets.

**03**

Design  
and  
Drawings



Figure Plan 1:1000

This figure plan show the relationship between the new building a and the existing city context. From this plan we could clearly see how the new building cluster reform the existing void in the city center.

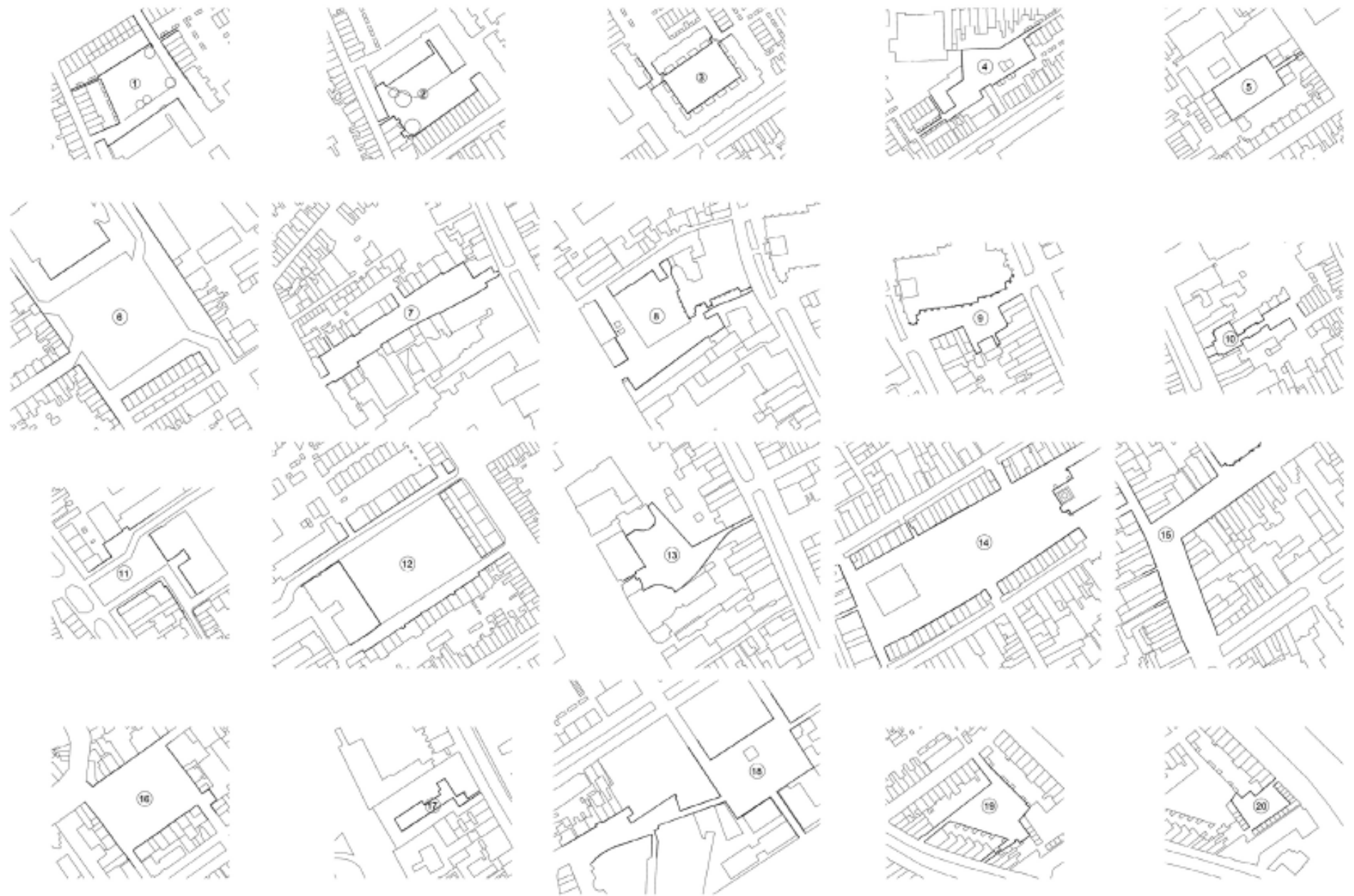
# Analysis of Delft courtyard





## 20 examples of courtyard

20 examples of courtyard in the city



# Entrance

Quantity:4



Quantity:2



Quantity:2



Quantity:3



Quantity:1



Quantity:5



Quantity:4



Quantity:3



Quantity:2



Quantity:2



Quantity:4



Quantity:4



Quantity:2



Quantity:7



Quantity:4



Quantity:4



Quantity:1



Quantity:6



Quantity:3



Quantity:1



## Dimension

Scale of courtyards

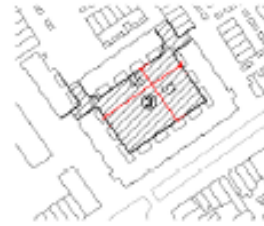
2927.8 m<sup>2</sup>



2375.8 m<sup>2</sup>



1721.7 m<sup>2</sup>



1694.8 m<sup>2</sup>



1263.1 m<sup>2</sup>



10965.5 m<sup>2</sup>



2756.2 m<sup>2</sup>



4083.1 m<sup>2</sup>



1526.9 m<sup>2</sup>



832.8 m<sup>2</sup>



2747.0 m<sup>2</sup>



7397.6 m<sup>2</sup>



2124.8 m<sup>2</sup>



10158.5 m<sup>2</sup>



2434.1 m<sup>2</sup>



4037.7 m<sup>2</sup>



531.6 m<sup>2</sup>



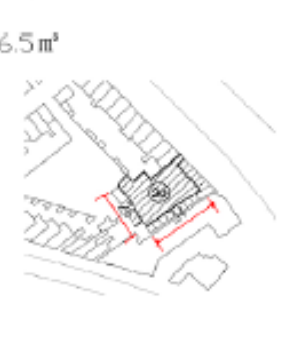
5202.2 m<sup>2</sup>



1776.9 m<sup>2</sup>



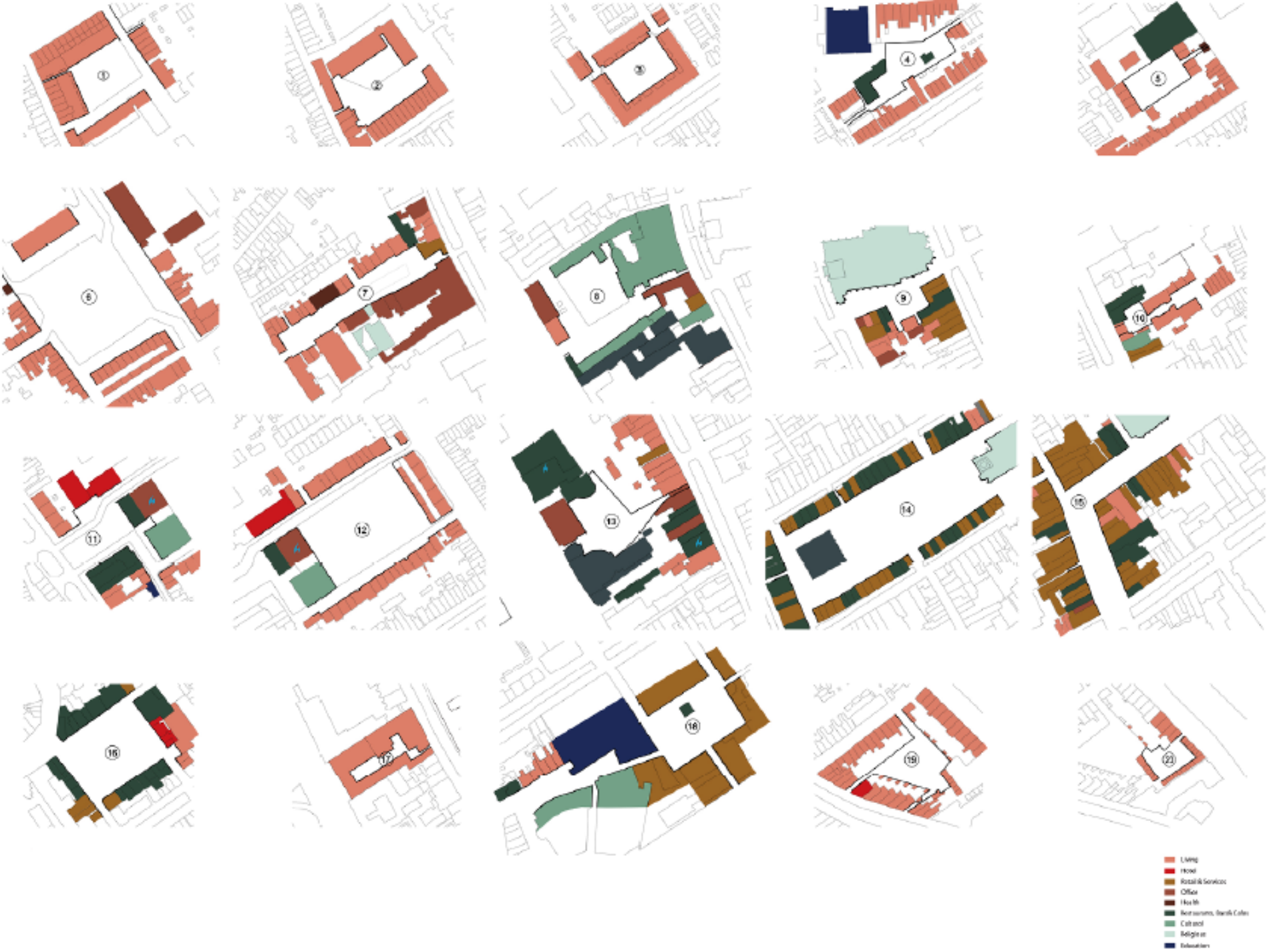
726.5 m<sup>2</sup>



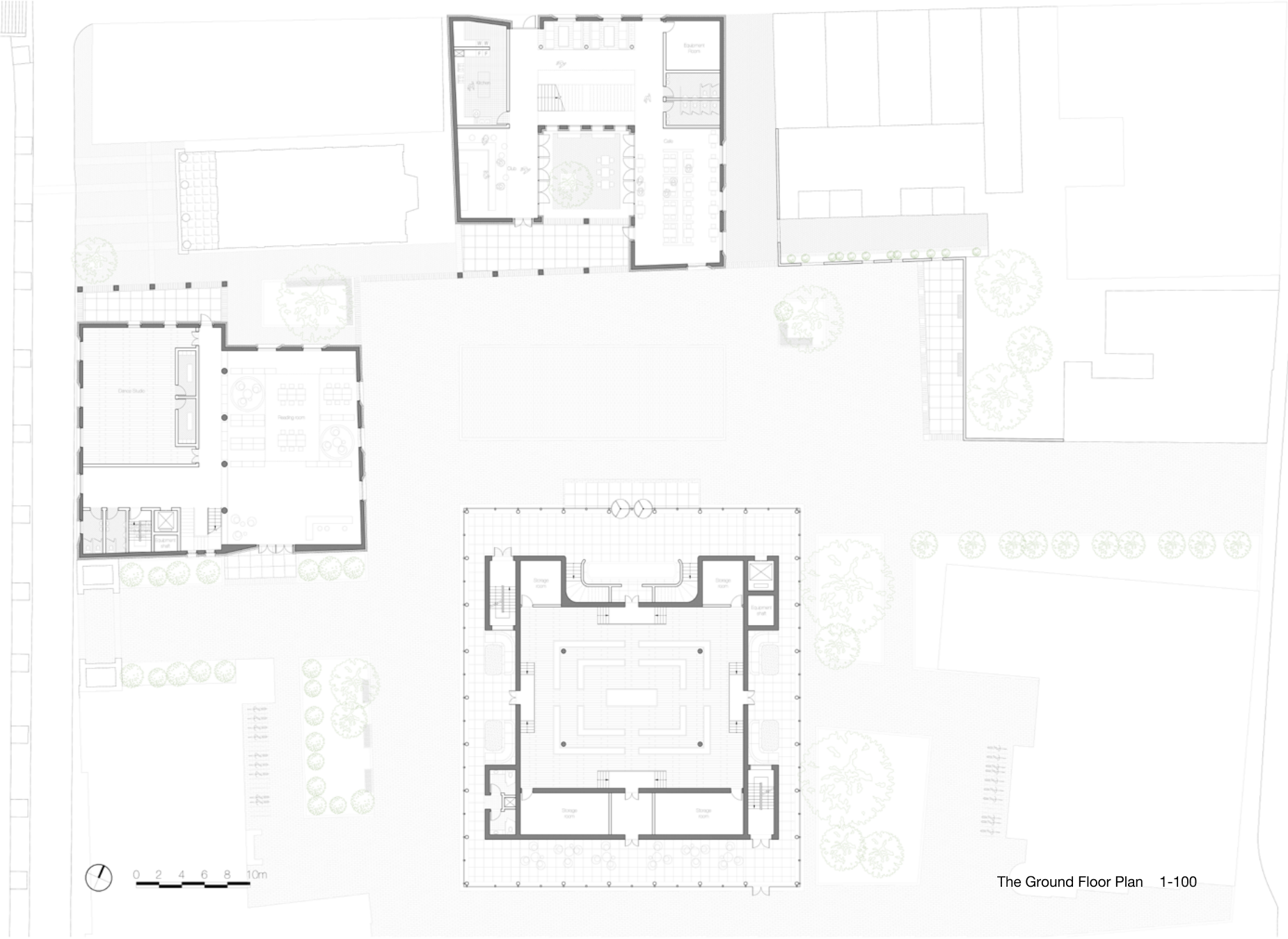


# Function

Function around courtyards

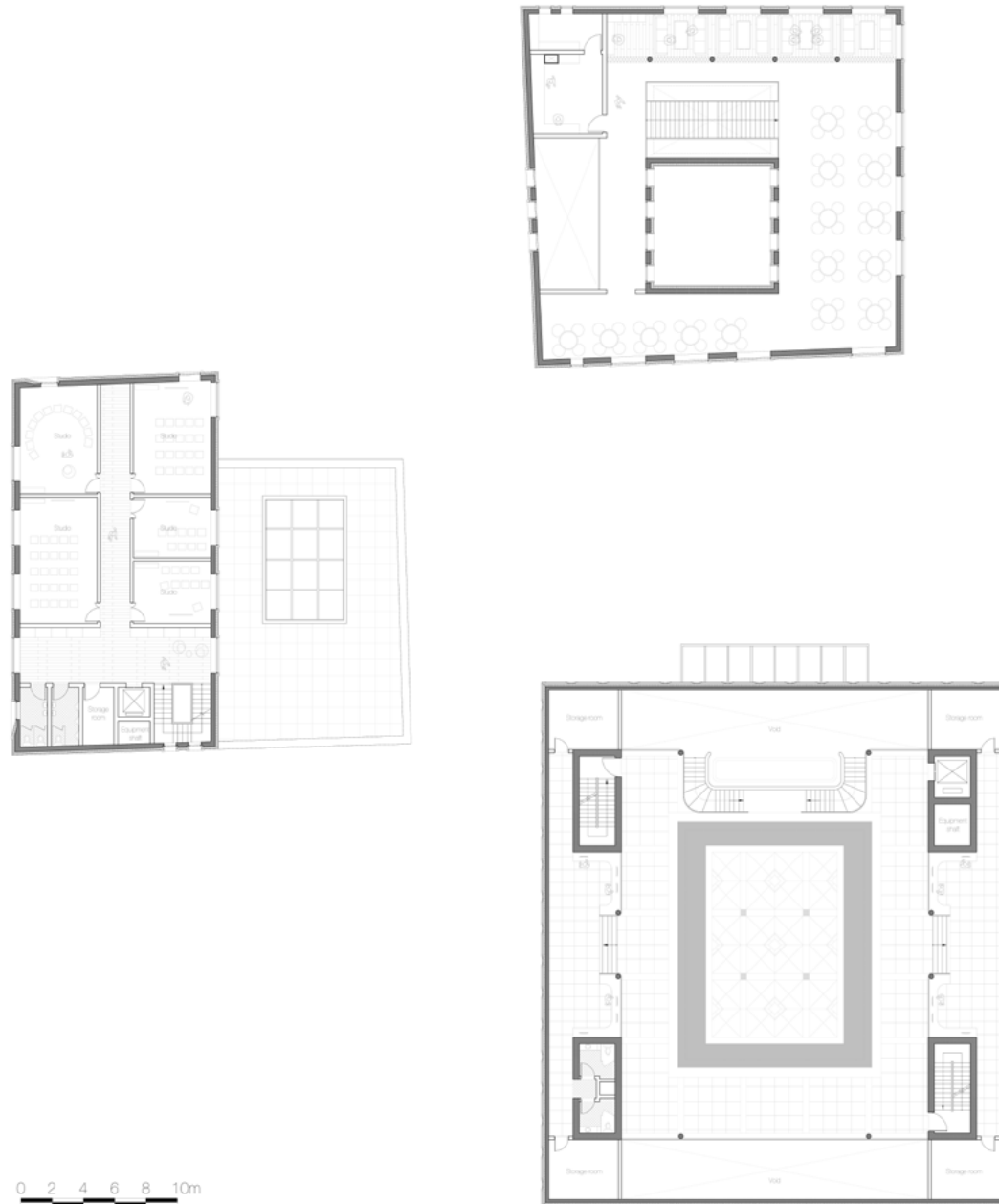


# Ground floor plan

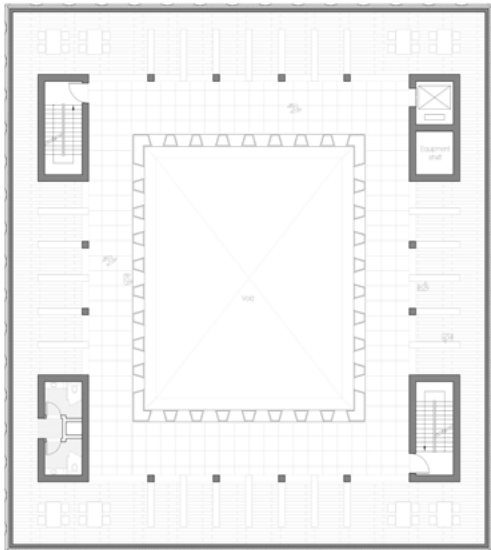
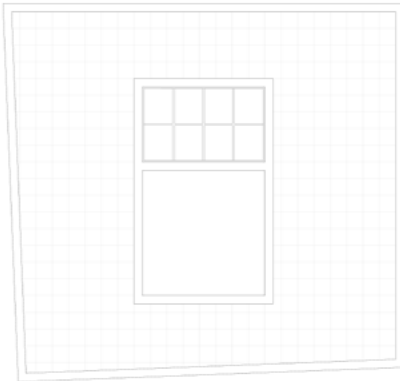


The Ground Floor Plan 1-100

## First floor plan



# First floor plan



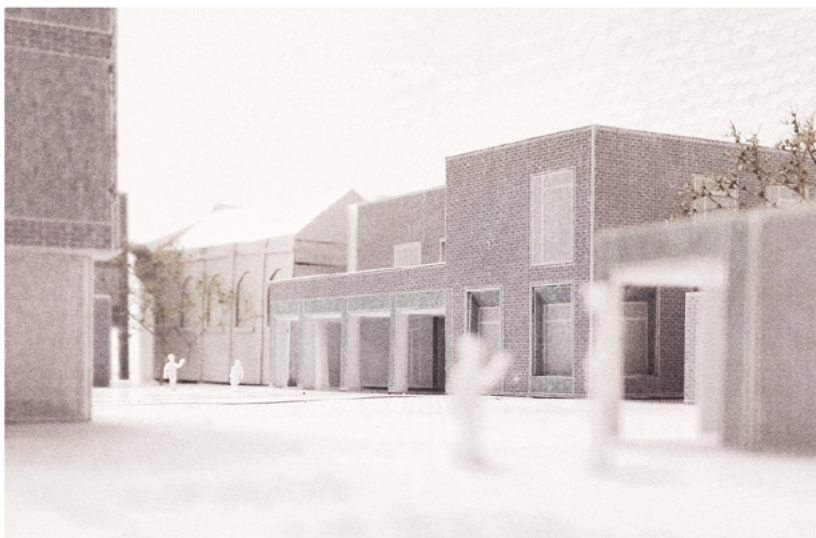
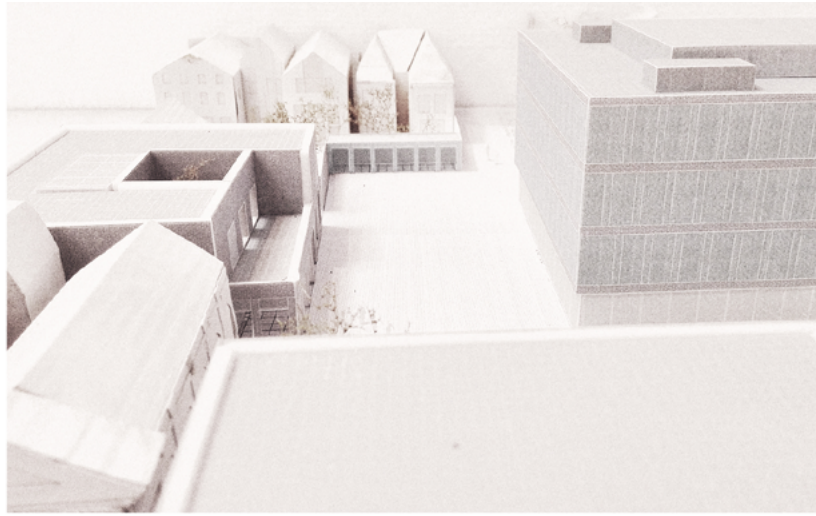


## Negative effect

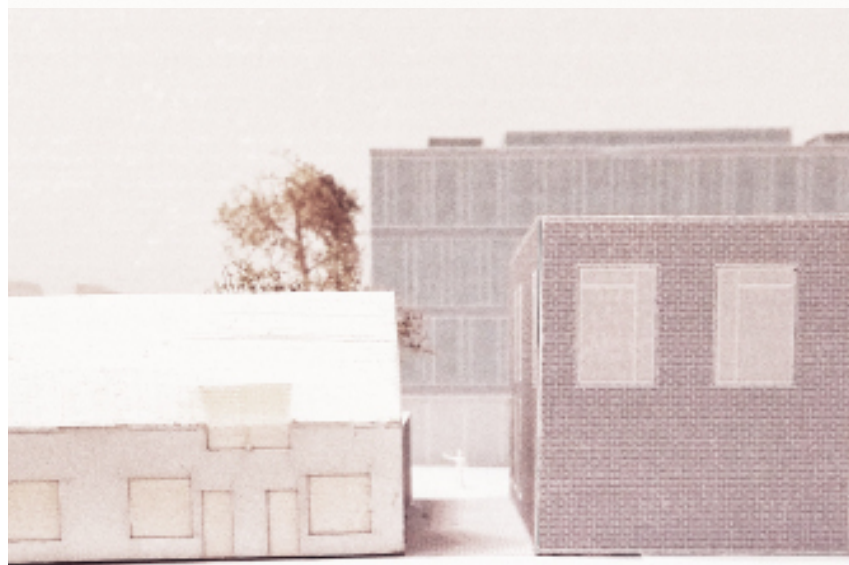
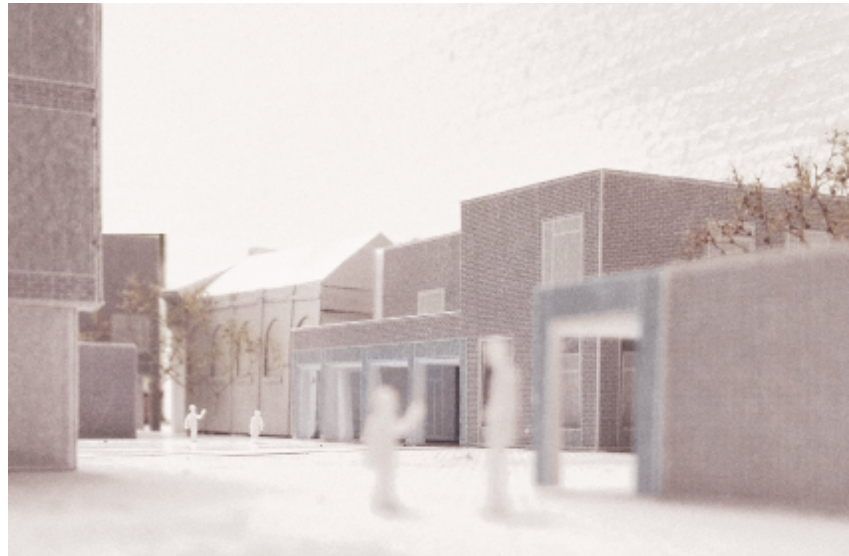




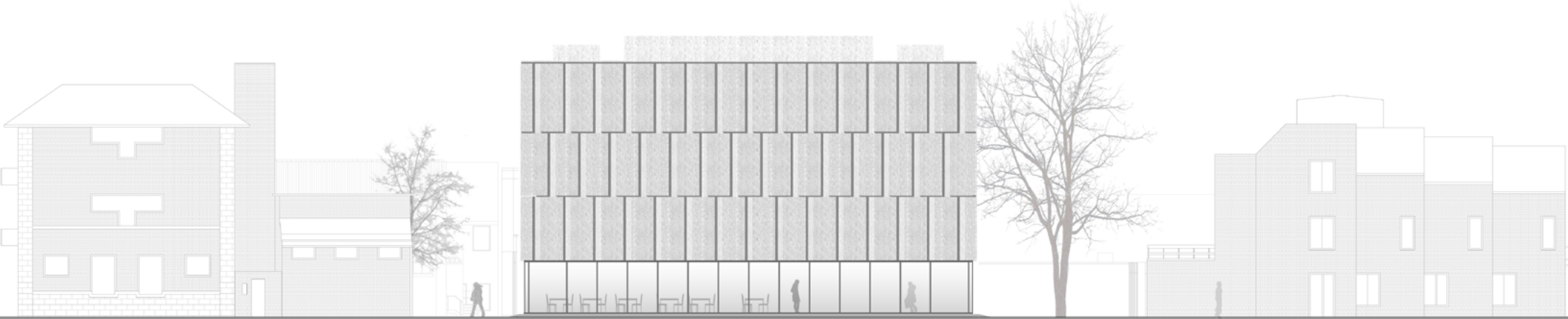
## Solution Strategy 1



## Solution Strategy 2



**Space of Collection**  
Interiors Buildings Cities MSc 3 Graduation Studio



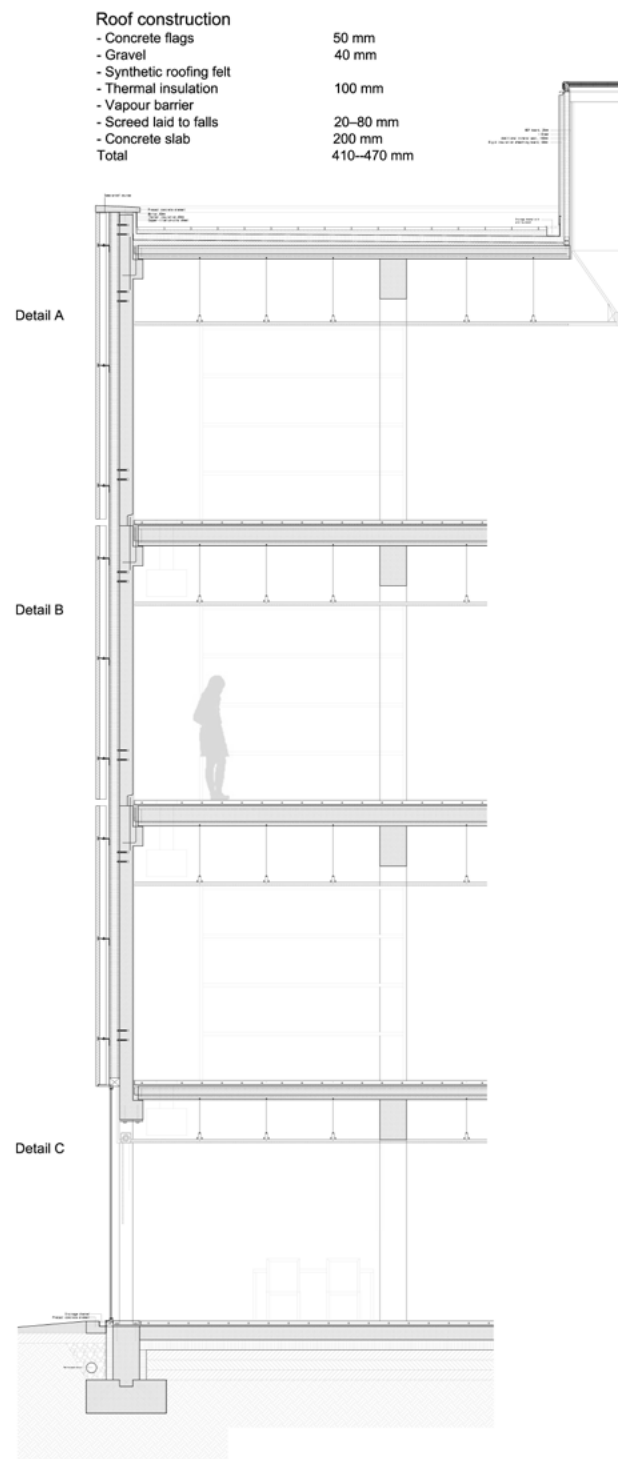
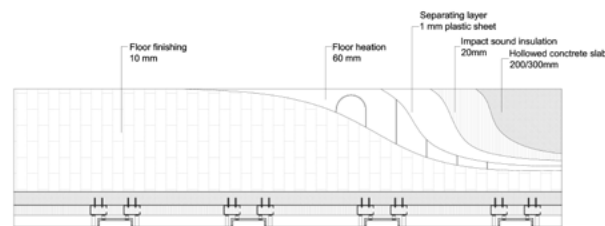
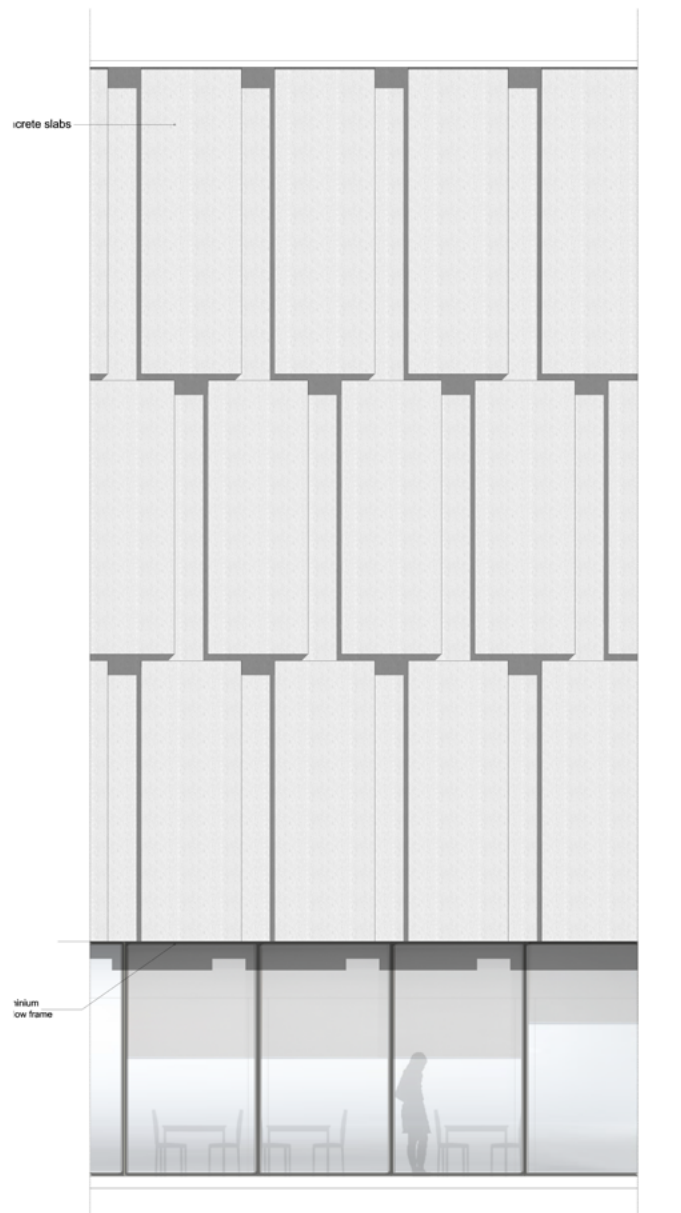
SOUTH ELEVATION 1:200



WEST ELEVATION 1:200



Facade fragment 1: 20



**Roof construction**

- Concrete flags	50 mm
- Gravel	40 mm
- Synthetic roofing felt	
- Thermal insulation	100 mm
- Vapour barrier	
- Screed laid to falls	20-80 mm
- Concrete slab	200 mm
<b>Total</b>	<b>410-470 mm</b>

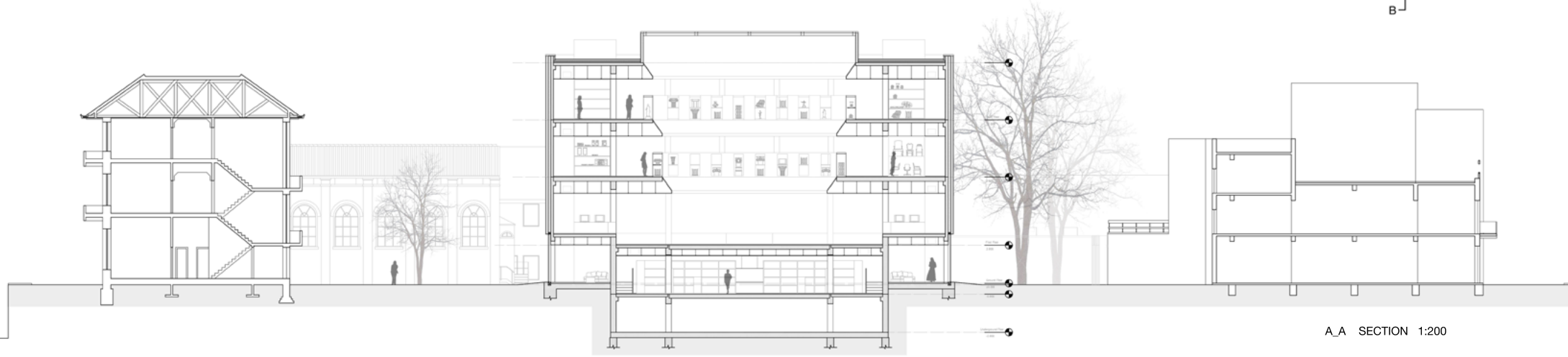
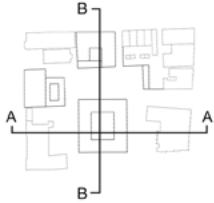
**Wall construction**

- Concrete slabs	28 mm
- Ventilated cavity	100-132 mm
- Thermal insulation	200 mm
- Concrete internally	200 mm
- Interior wall finishing	20 mm
<b>Total</b>	<b>580 mm</b>

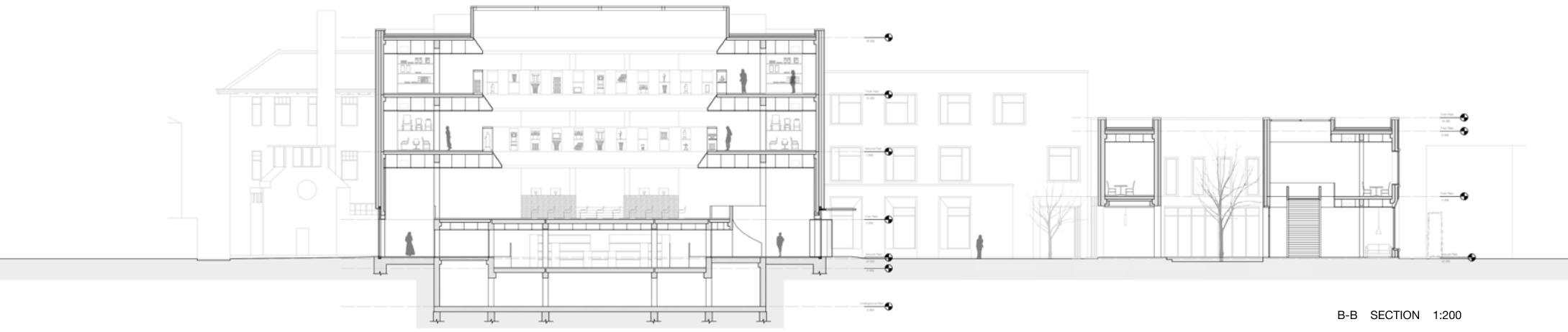
**Floor construction**

- Floor finishing	10 mm
- Screed with underfloor heating (floating)	60 mm
- Separating layer (1 mm plastic sheet)	
- Impact sound insulation	20 mm
- Hollowed concrete slab	200/300 mm
<b>Total</b>	<b>390/490 mm</b>

Space of Collection  
Interiors Buildings Cities MSc 3 Graduation Studio



A\_A SECTION 1:200



B-B SECTION 1:200



## Archive Interior



## Archive Interior

This image shows the section and interior of the archive



## Anatomical Theater



Palazzo del Bo Anatomical Theate

## Archive Interior



### Atrium of the archive

These two pictures show the image of atrium of the archive  
Shelves surround the atrium showing the collections



## Club Interior



### Club Interior

This image show the view of the first floor of the club  
It has wood floor and white painted wall



## Club Interior



## Club Interior

This image show the view of the Ground floor of the club

## Study center Interior

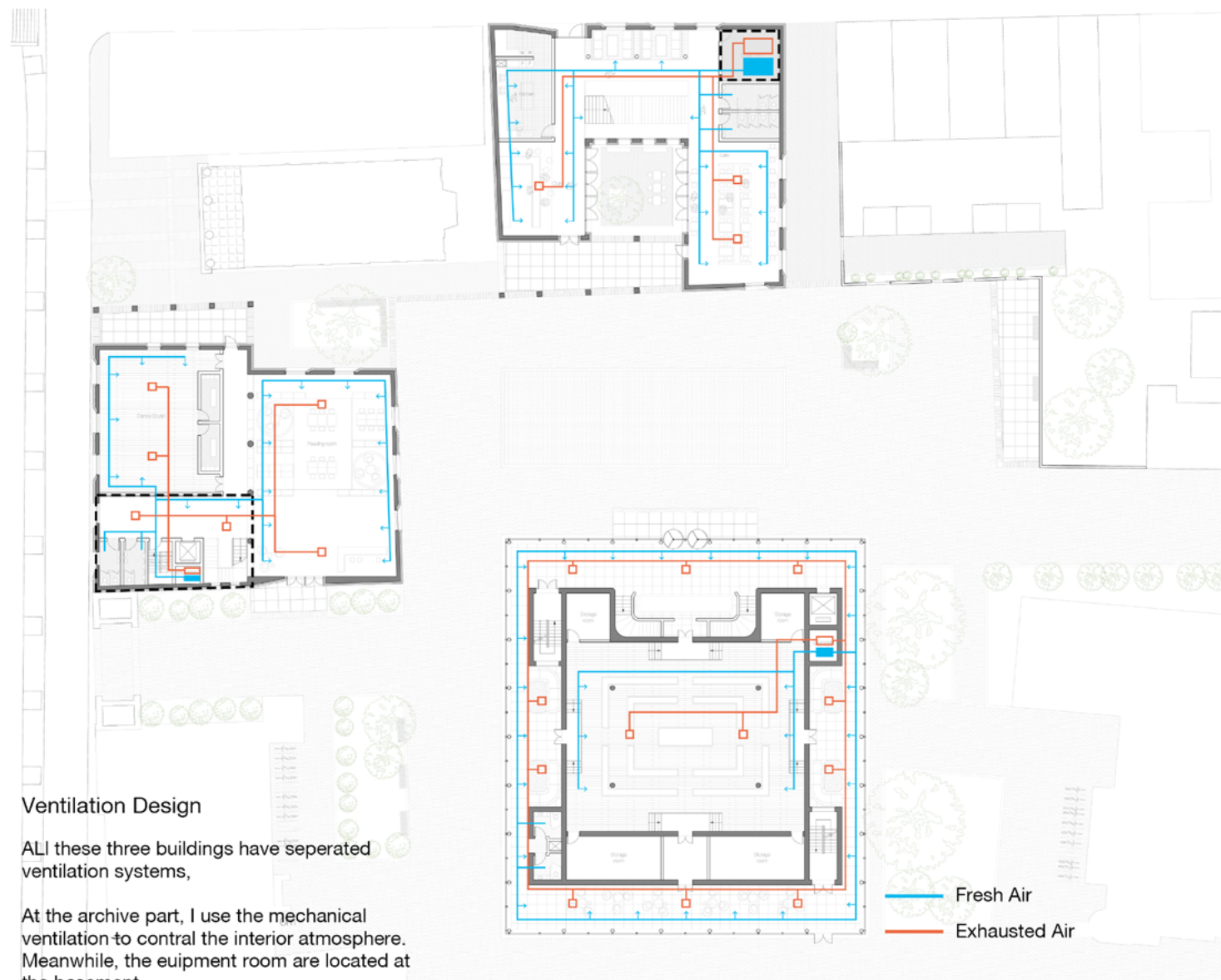


## Reading room Interior

This image show the view of the reading room of the studio building  
which is located at the ground floor  
It has wood floor and white painted wall

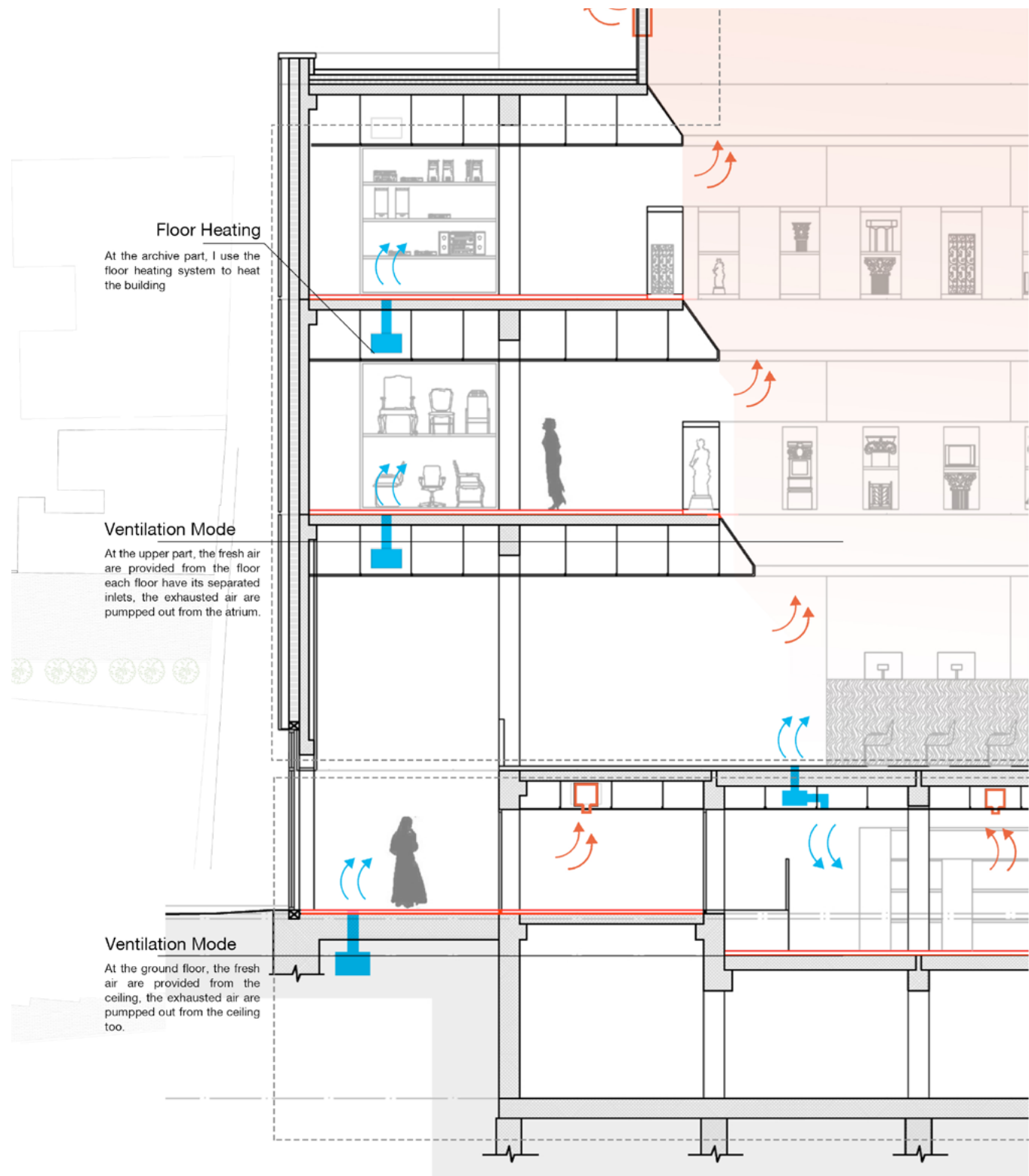


## Climate Design



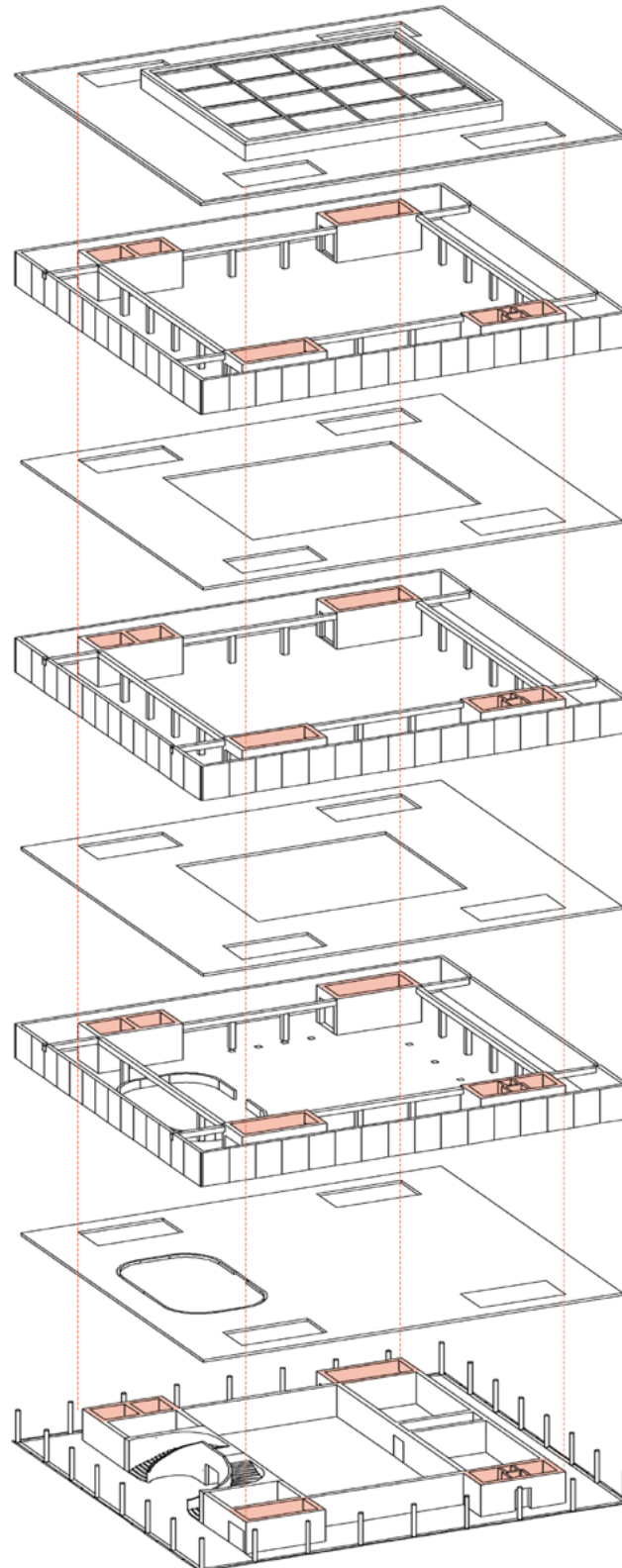


## Climate Design

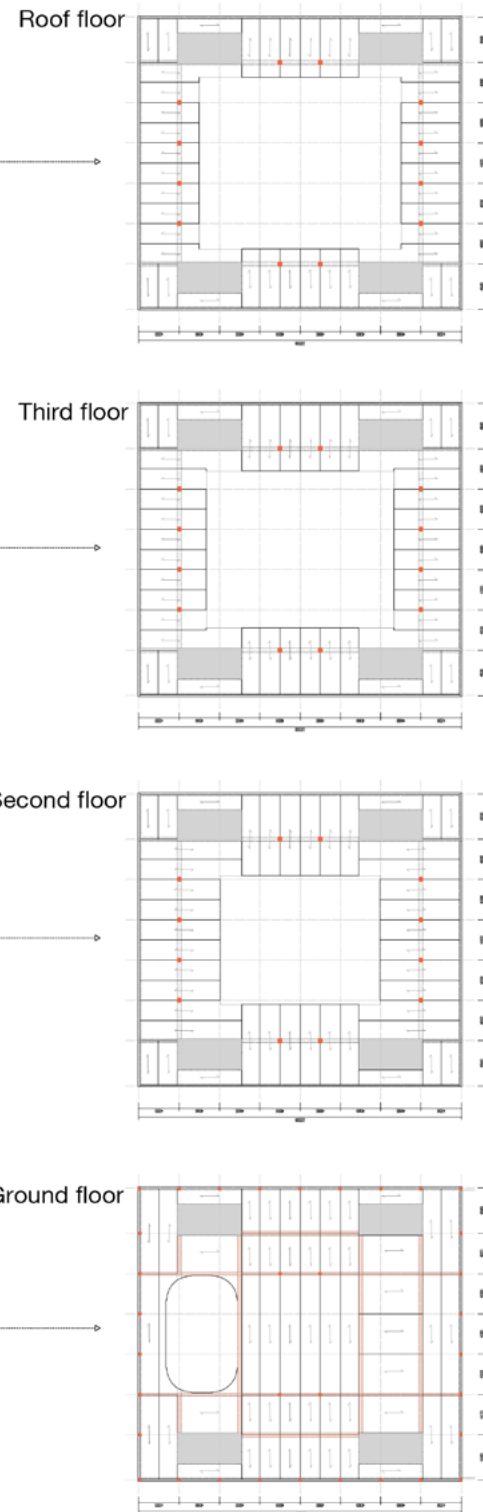


## Structure Design

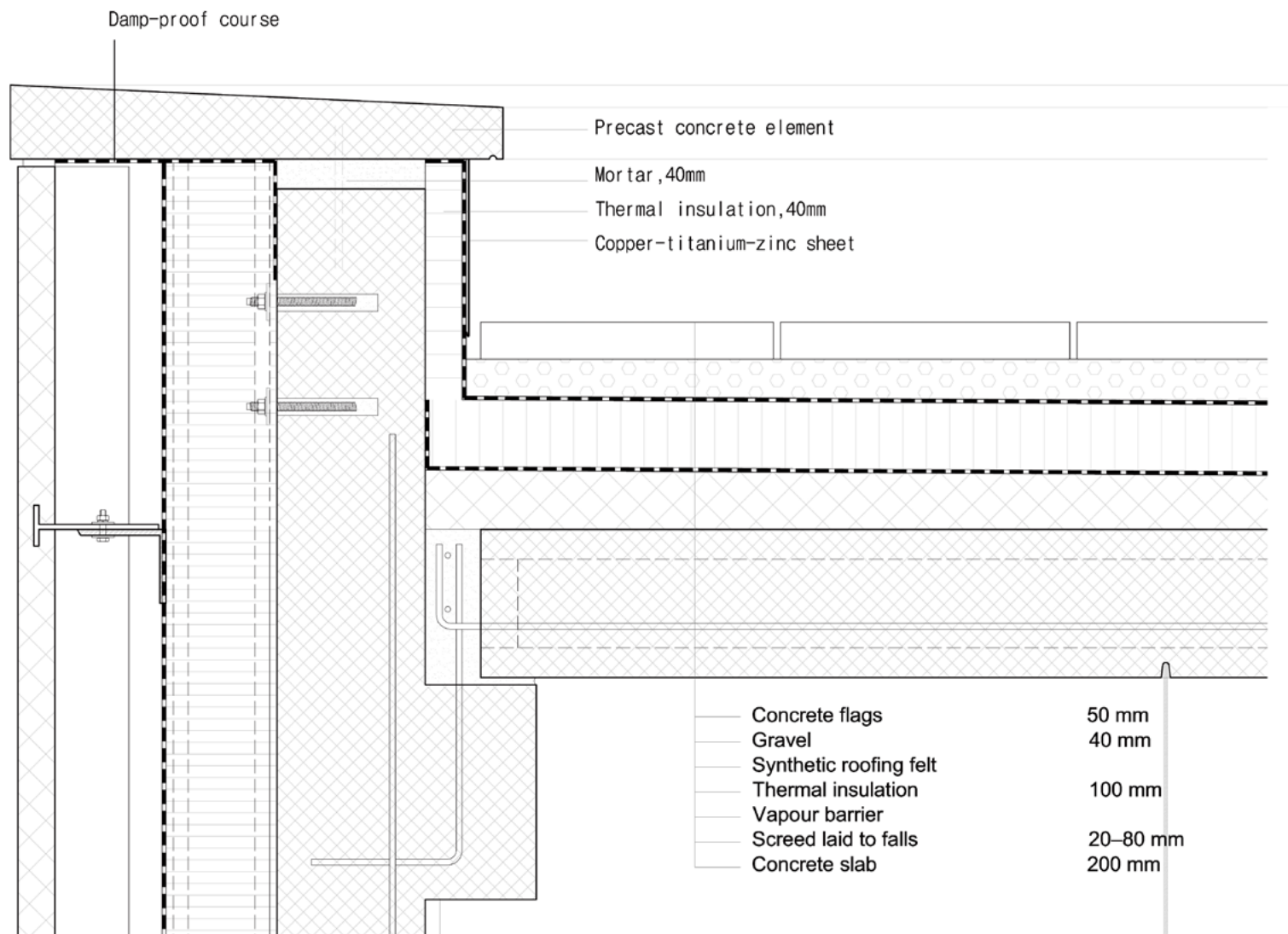
Structure Diagram



Floor layout



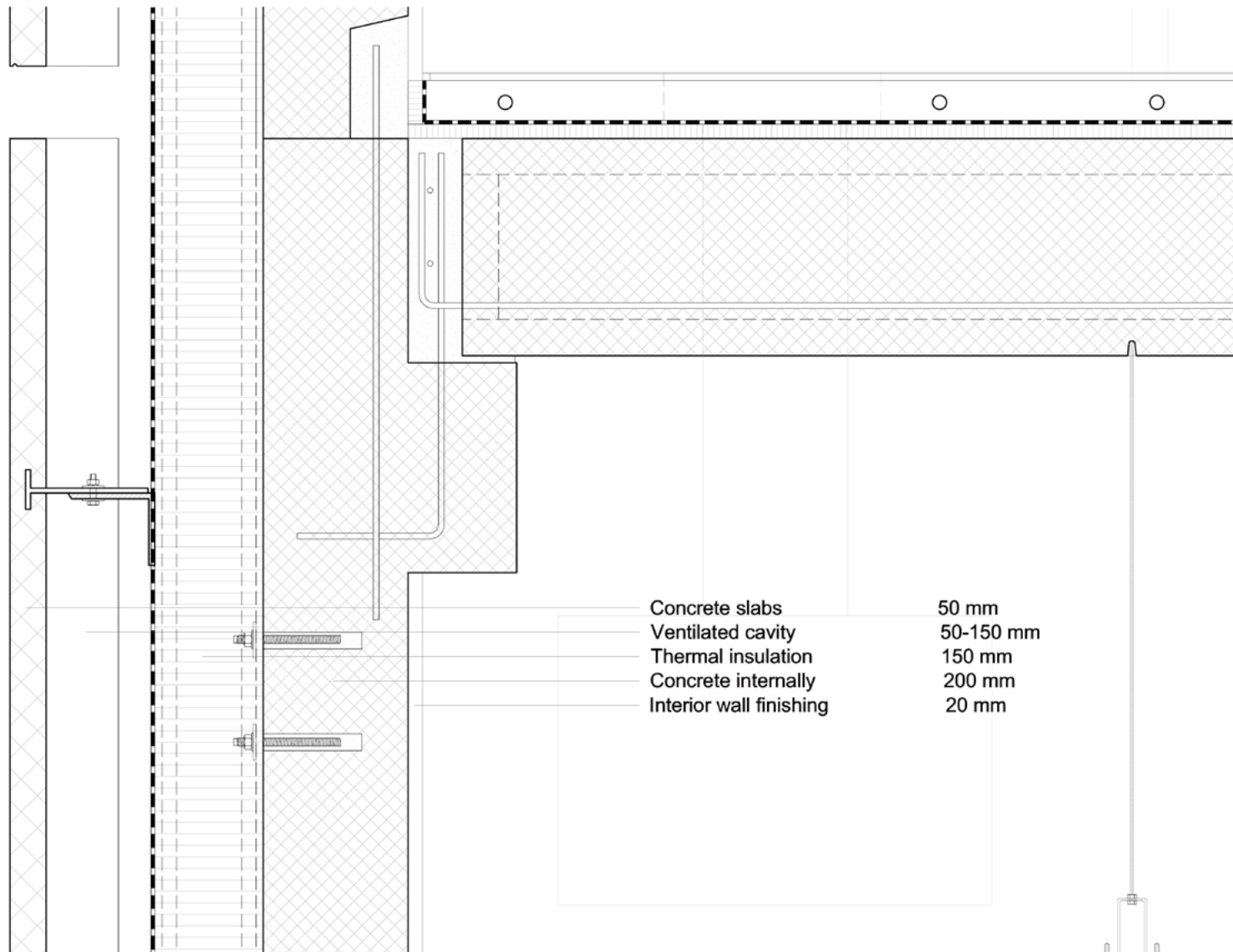
## Joint Connection



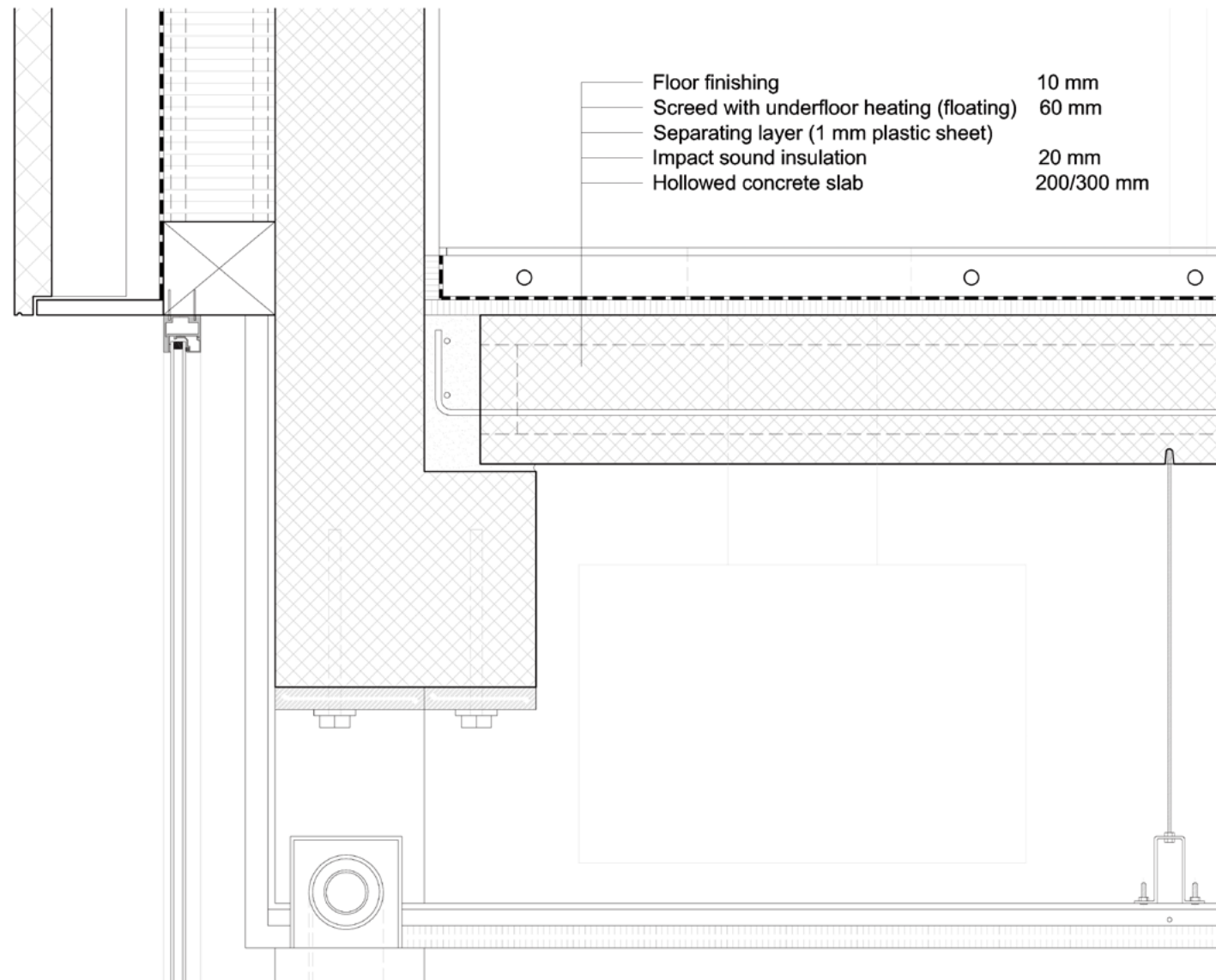
Detail A 1:5



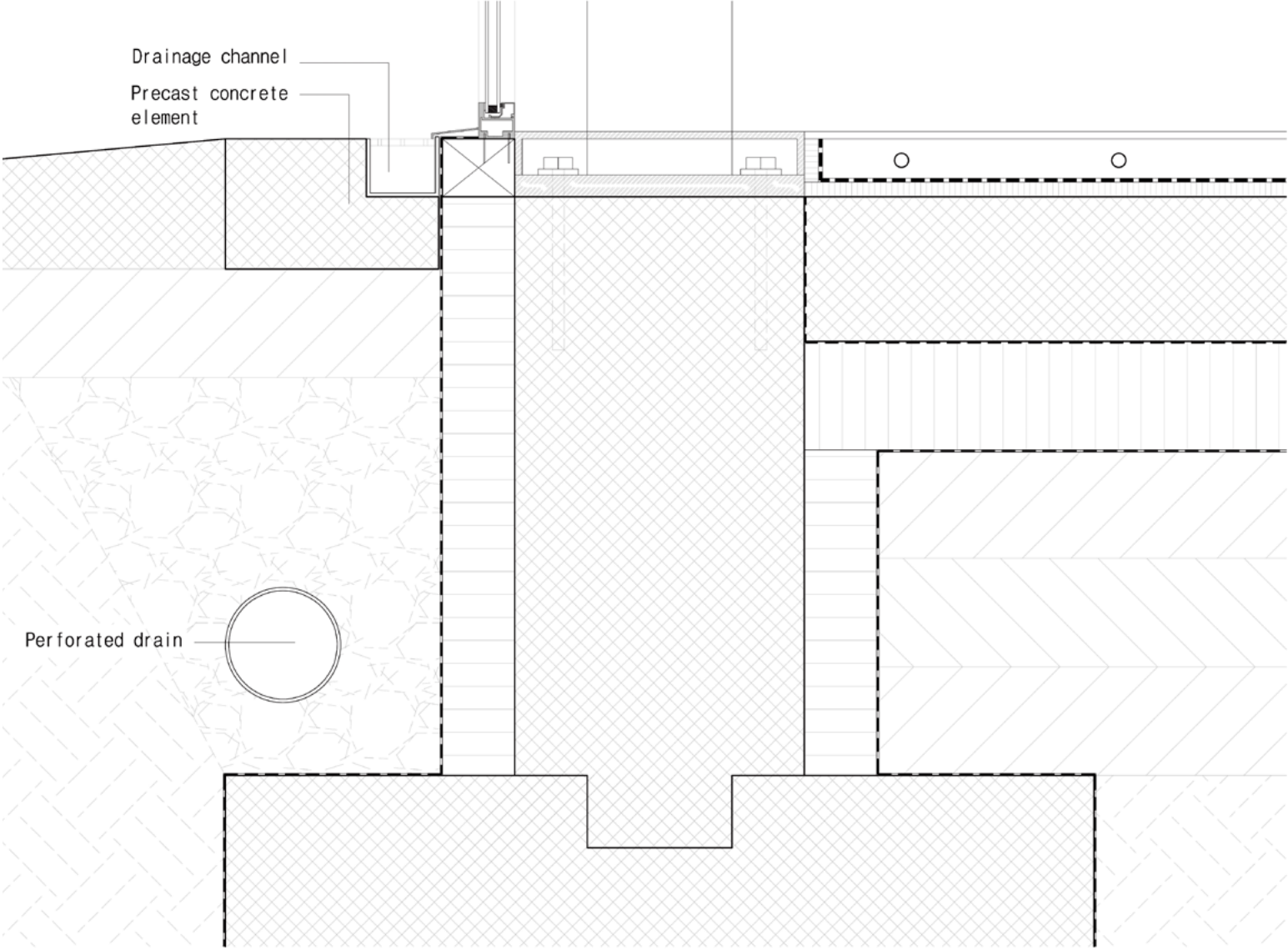
## Joint Connection



Detail B 1:5

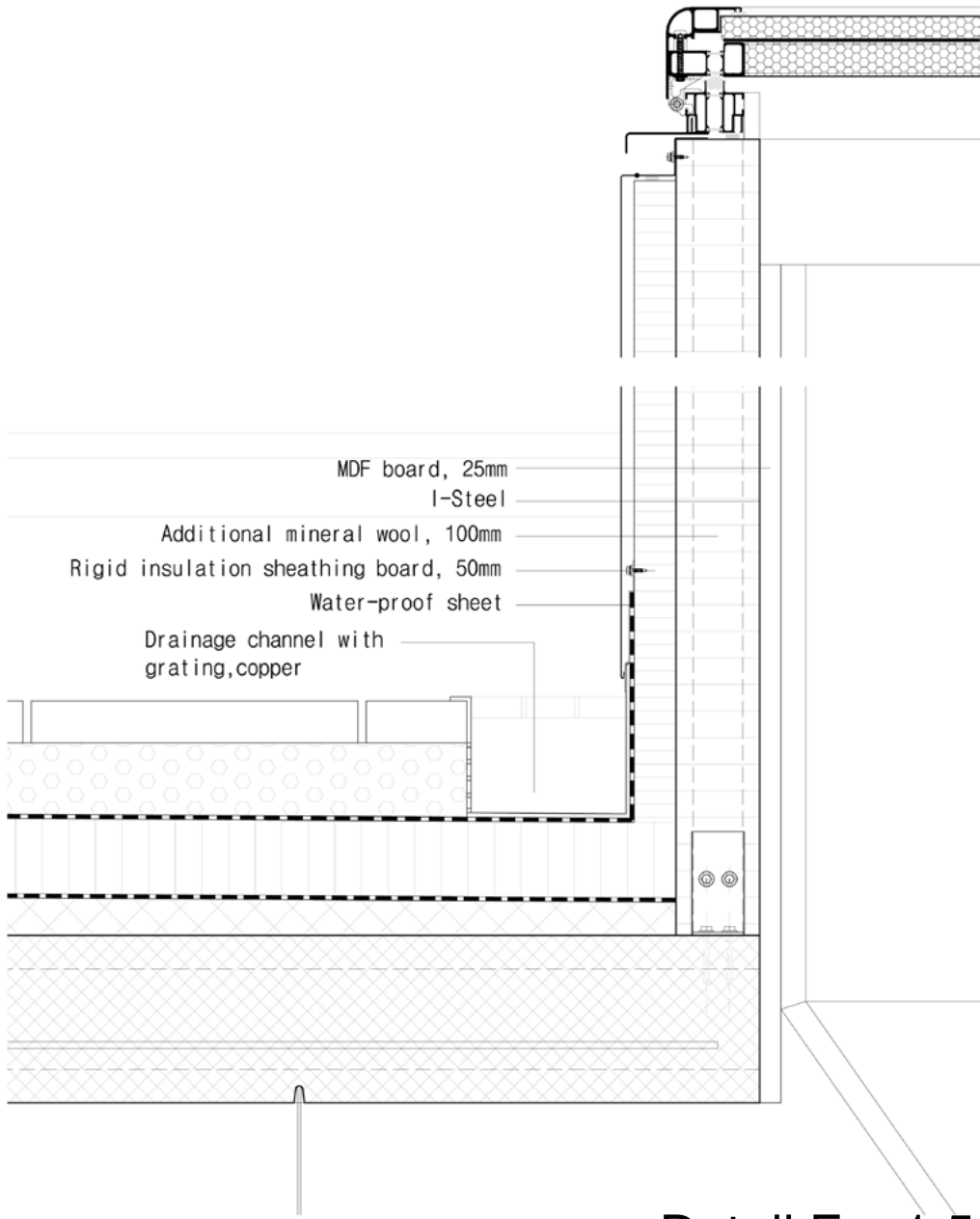


Detail C 1:5



Detail D 1:5





Detail E 1:5

Thanks