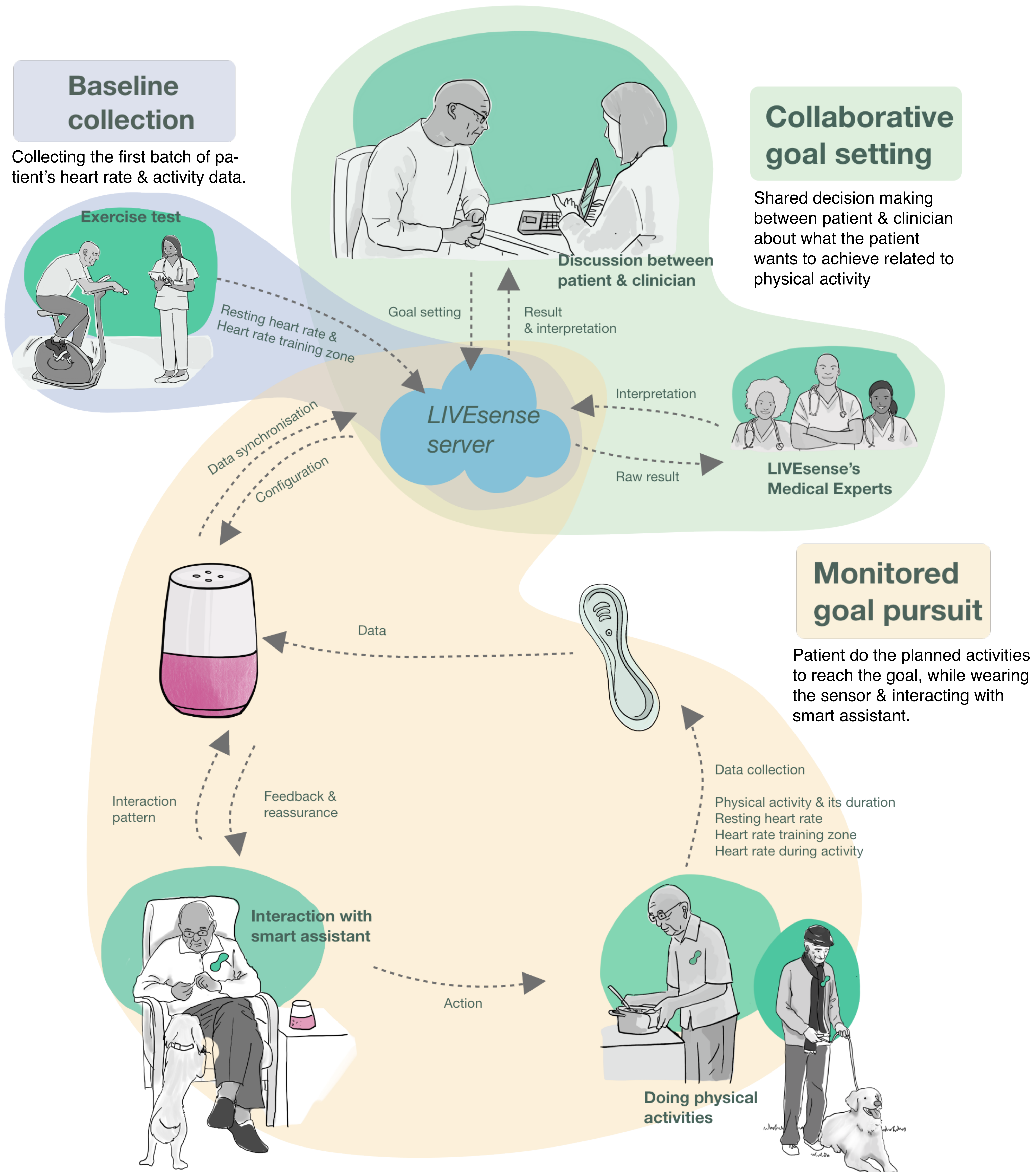


# LIVEsense:

a continuous and collaborative goal setting system for TAVI (Transcatheter Aortic Valve Implantation) Patient using Sensor Data



Anindya Paramaarti  
 LIVEsense: a Continuous and Collaborative Goal Setting System  
 using Sensor Data for Transcatheter Aortic Valve Implantation  
 (TAVI) Patient  
 14 September 2020  
 MSc Strategic Product Design, Medisign specialization

**Committee**  
 Chair : Prof. Dr. Gerd Kortuem  
 Mentor : Prof. Dr. ir. Maaïke Kleinsmann  
**Collaboration**  
 AMC : M. Marije Vis, MD, Ph.D  
 Philips : Peter Lovei

