

A dynamic open-source model to investigate wake dynamics in response to wind farm flow control strategies

Becker, M.; Lejeune, Maxime; Chatelain, Philippe; Allaerts, D.J.N.; Mudafort, Rafael ; van Wingerden, J.W.

DOI

[10.5194/wes-2024-150](https://doi.org/10.5194/wes-2024-150)

Publication date

2025

Document Version

Final published version

Published in

Wind Energy Science

Citation (APA)

Becker, M., Lejeune, M., Chatelain, P., Allaerts, D. J. N., Mudafort, R., & van Wingerden, J. W. (2025). A dynamic open-source model to investigate wake dynamics in response to wind farm flow control strategies. *Wind Energy Science*, 10(6), 1055-1075. <https://doi.org/10.5194/wes-2024-150>

Important note

To cite this publication, please use the final published version (if applicable).
Please check the document version above.

Copyright

Other than for strictly personal use, it is not permitted to download, forward or distribute the text or part of it, without the consent of the author(s) and/or copyright holder(s), unless the work is under an open content license such as Creative Commons.

Takedown policy

Please contact us and provide details if you believe this document breaches copyrights.
We will remove access to the work immediately and investigate your claim.



A dynamic open-source model to investigate wake dynamics in response to wind farm flow control strategies


Marcus Becker¹, Maxime Lejeune², Philippe Chatelain², Dries Allaerts³, , Rafael Mudafort⁴, and Jan-Willem van Wingerden¹

¹Delft Center for Systems and Control, Delft University of Technology, Delft, the Netherlands

²Thermodynamics and Fluid Mechanics, Institute of Mechanics, Materials and Civil Engineering, Université catholique de Louvain, Louvain-la-Neuve, Belgium

³Faculty of Aerospace Engineering, Delft University of Technology, Delft, the Netherlands

⁴National Renewable Energies Laboratory, Golden, CO, United States of America

 deceased

Correspondence: Marcus Becker (marcus.becker@tudelft.nl) and Maxime Lejeune (maxime.lejeune@uclouvain.be)

Received: 8 November 2024 – Discussion started: 25 November 2024

Revised: 25 February 2025 – Accepted: 12 March 2025 – Published: 11 June 2025

Abstract. Wind farm flow control (WFFC) is the discipline of manipulating the flow between wind turbines to achieve a farm-wide goal, like power maximization, power tracking or load mitigation. Specifically, steady-state control approaches have shown promising results in both theory and practice for power maximization. But how are they expected to perform in a dynamically changing environment? This paper presents an open-source wake modeling framework called OFF (abbreviated from the models OnWARDS, FLORIDyn and FLORIS). It allows the approximation of the performance of WFFC strategies in response to environmental changes at a low computational cost. It is rooted in previously published dynamic parametric engineering models and offers a flexible and adaptable platform to explore these models further. The presented study tests the modeling framework by investigating the performance of different wake steering controllers in a 10-turbine wind farm case study based on a subset of the Dutch wind farm Hollandse Kust Noord (HKN). The case study uses a 24 h wind direction time series based on field data and verifies subsets of the time series in a large-eddy simulation (LES). The results highlight how dependent yaw travel is on the controller settings and suggest where users can strike a balance between power gains and actuator usage. They also show the structural differences and similarities between steady-state and dynamic engineering models. The comparison to LES shows what timescales the surrogate models cover and how accurately. While steady-state models capture turbine power signal dynamics up to $\approx 1/570$ Hz, the dynamic wake description can predict dynamics up to $\approx 1/360$ Hz with a better correlation and normalized root-mean-square error. Further results show that the dynamic wake description is mainly advantageous over steady-state wake models for shorter periods (< 20 min). The paper also opens up discussion about the effectiveness of wind farm flow control in a time-marching manner as opposed to a steady-state viewpoint.

1 Introduction

Wind energy is an essential part of the modern renewable energy mix and, therefore, part of the increasing share of energy that is covered by renewables. With this increasing share comes a higher responsibility. Where previously only individual turbines would contribute to the electrical grid, numerous wind farms provided 19% of the electricity demand in the EU in 2023 (Costanzo and Brindley, 2024). With this increased relevancy, the question arises of whether wind farms are used to their full extent. Their efficiency could be limited, among other reasons, by unintended turbine downtime, maintenance or non-ideal operation. Wake losses are included in the latter, as front-row turbines extract kinetic energy from the wind, and they inevitably slow down the flow behind them. The turbines downstream thereby experience a lower wind speed and generate less power in response. To combat this effect, wind farm flow control (WFFC) methods focus on lessening the losses induced by wakes. This is achieved by modifying the behavior of the turbines from a greedy control approach to a collaborative one.

Multiple control approaches exist to address this issue. They can be sorted by the degrees of freedom they use: (i) the blade pitch (e.g., Frederik et al., 2020; Coquelet et al., 2022) (ii) the generator torque (e.g., Munters and Meyers, 2017) and (iii) the (mis-)alignment of the turbine with the flow (e.g., Fleming et al., 2020, or Doekemeijer et al., 2021). Broadly speaking, (i) and (ii) change how much energy is extracted from the flow field. Applied dynamically, the blade pitch can also increase wake mixing behind the turbine, which leads to a faster wake recovery. In contrast, using (iii), the alignment of the rotor allows the controller to deflect the wake in the lateral direction. This control strategy can be used to direct the wake away from downstream turbines and is referred to as wake steering. The remainder of the paper focuses on this effect and methods to determine the effectiveness of control strategies using wake steering.

To research, test and optimize control strategies for wind farms, surrogates of the real plant are needed. This mitigates risks, lowers costs, increases flexibility and makes the problem more accessible. Alongside wind tunnel experiments (e.g., Bastankhah and Porté-Agel, 2016; Hulsman et al., 2024), simulations are the predominant way to approximate wind farm behavior. Within the world of simulations, three groups can be distinguished: high-, medium- and low-fidelity simulations. High-fidelity models, such as large-eddy simulation (LES), provide the most accurate approximation of the flow field (e.g., Chatelain et al., 2013; Churchfield et al., 2012). This does come at an increased computational cost, which has confined their application to the verification or exploration of new phenomena not yet captured by lower-fidelity models. At the other end of the spectrum, low-fidelity simulations reduce the wake behavior to a set of simple analytical equations that are efficient to solve. This, however, means that they can only describe what they have been de-

signed for, typically a single time-averaged snapshot of the flow field (e.g., Jensen, 1983; Bastankhah and Porté-Agel, 2016). Low-fidelity models are therefore routinely used to, for instance, optimize the orientation of all turbines in a wind farm for the entire wind rose, to make estimates of the annual energy produced (AEP) or to optimize the wind farm layout.

Growing concerns about fatigue effects on wind turbine integrity, along with the rising need for ancillary service provision, have driven recent research toward a new generation of dynamic medium-fidelity models. These models are designed to address more immediate and transient phenomena, effectively bridging the gap between high- and low-fidelity approaches. By capturing the critical dynamics of high-fidelity simulations at a fraction of the computational cost, they move beyond steady-state assumptions, unlocking new possibilities for wind farm operations. Key applications include, for example, intra-hour power production predictions for grid regulation (e.g., Moens et al., 2024), as well as multi-objective wake steering strategies that optimize the power output while simultaneously mitigating the turbine's loads (e.g., Quick et al., 2022).

Medium-fidelity wake models are primarily categorized by the equations they use to model flow physics, balancing computational cost with accuracy. While 2D linearized Reynolds-averaged Navier–Stokes (RANS) methods have demonstrated some initial success at estimating simple wake states, they have been shown to improperly account for wake deflection (van den Broek et al., 2022). In contrast, free-vortex methods (e.g., Marichal et al., 2017; Marten, 2020; or van den Broek et al., 2023) explicitly resolve vortex dynamics, providing deeper insights into large-scale wake behavior. This capacity, to account for phenomena such as wake deflection and wake curling, makes free-vortex methods ideal candidates to investigate wake steering. However, the computational burden associated with these methods makes them unsuitable for large parameter spaces, such as those encountered in offshore wind farms involving dozens of turbines. Additionally, they tend to become numerically unstable for large distances and are, therefore, limited in terms of the wake length they can describe accurately.

The dynamic wake meandering (DWM) model, initially proposed by Larsen et al. (2007), also opts for a Lagrangian parametrization of the wake, describing it as a cascade of velocity deficits without explicitly solving vortex dynamics. Since its introduction, the DWM approach has been further calibrated and validated by numerous studies comparing it against both numerical and field data (Madsen et al., 2010; Larsen et al., 2017; Jonkman et al., 2018). Building on these early successes, it has been integrated into simulation software such as FAST-Farm (Jonkman et al., 2017) and HAWC2FARM (Liew et al., 2023). More recently, the DWM model has been reinterpreted into a series of lighter, control-oriented wake modeling frameworks that include FLORIDyn (Gebraad and van Wingerden, 2014; Becker et al., 2022c, b; Braunbehrens et al., 2022), OnWARDS

(Lejeune et al., 2022), UFloris (Foloppe et al., 2022) and SWiPLab-WFM (Kipke and Sourkounis, 2024). A common feature of these models is that they all adopt a Lagrangian description of the flow while relying on engineering wake models to capture the wake's influence. However, though similar, these models take different paths, notably regarding how they handle the ambient flow field and wake deflection. They also differ in terms of the steady-state surrogate wake model, which is generally fixed for the presented designs. And, while steady-state models have been summarized in unified toolboxes (FLORIS, NREL, 2023; PyWake, Pedersen et al., 2023; or FOXES Schmidt et al., 2023), dynamic engineering models have not.

The purpose of OFF (abbreviation based on OnWARDS, FLORIDyn and FLORIS), the dynamic wake modeling framework presented in this paper, is to provide a unified, open-source toolbox that allows for easy comparison between different implementations. Specifically, the framework aims to

- design and implement an interface with established steady-state models, such as FLORIS (NREL, 2023) or PyWake (Pedersen et al., 2023);
- provide a framework for prototyping Lagrangian dynamic wake models through standardized input–output structures, facilitating the replicability of results;
- offer accessibility through open-source code written in Python.

Such a tool shall eventually allow for benchmarking and comparisons of dynamic and steady-state wake model designs and for further exploration and development of dynamic WFFC strategies at a low computational cost (as already utilized by, e.g., Sterle et al., 2024, and Miao et al., 2024). Further scientific contributions of this paper are

- an investigation into the timescales captured by steady-state wake models versus those captured by dynamic wake models, providing insights to help users make informed choices based on their specific needs;
- a verification of the presented code using LES in a neutral atmospheric boundary layer (ABL) with a 10-turbine wind farm;
- a dataset based on a total of 54 h of LES with varying controller settings and changing wind directions to use for further wake model analysis and synthesis.

The following paper is split into five sections. While Sect. 1 introduces the context of the work, Sect. 2 describes the presented model and its architecture, as well as details of the implementation used to generate the results from this paper. Section 3 then presents a case study where a selection of yaw steering controllers are investigated in the presented

model, followed by Sect. 4, where a selected range of controllers are implemented in the LES. The section goes on to compare the LES results to the results predicted by the dynamic model as well as by the steady-state model. Lastly, Sect. 5 concludes the paper and suggests pointers for future work.

2 Model description

The framework called OFF is designed to run generic particle-based dynamic wind farm flow simulations using three sets of states: (i) turbine states \mathbf{x}_T , (ii) ambient states \mathbf{x}_{amb} and (iii) observation point (OP) states \mathbf{x}_{OP} . Turbine states \mathbf{x}_T consist of all states necessary to describe the turbine's impact on the wake, e.g., the turbine yaw angle and its axial induction. The ambient states \mathbf{x}_{amb} characterize the flow field, with information about wind speed, direction and ambient turbulence intensity. The observation point states \mathbf{x}_{OP} finally map the world (i.e., inertial) coordinate system to the wake one, thereby allowing the reconstruction of a snapshot of the flow field across the wind farm. The states are then updated through three consecutive steps – prediction (Eq. 1), correction (Eq. 2) and control (Eq. 3):

$$[\mathbf{x}_T(k), \mathbf{x}_{\text{amb}}(k), \mathbf{x}_{\text{OP}}(k)] = f_{\text{prediction}}(\mathbf{x}_T(k-1), \mathbf{x}_{\text{amb}}(k-1), \mathbf{x}_{\text{OP}}(k-1), \mathbf{c}), \quad (1)$$

$$[\mathbf{x}_T(k), \mathbf{x}_{\text{amb}}(k), \mathbf{x}_{\text{OP}}(k)] = f_{\text{correction}}(\mathbf{x}_T(k), \mathbf{x}_{\text{amb}}(k), \mathbf{x}_{\text{OP}}(k), \mathbf{m}(k), \mathbf{c}), \quad (2)$$

$$\mathbf{x}_T(k) = f_{\text{control}}(\mathbf{x}_T(k), \mathbf{x}_{\text{amb}}(k), \mathbf{x}_{\text{OP}}(k), \mathbf{m}(k), \mathbf{c}), \quad (3)$$

where \mathbf{c} denotes a set of parameters, k the time step and \mathbf{m} a set of measurements. The prediction step advances the model by itself: it propagates and updates the information gathered at the previous time steps. The correction step then uses the current measurements to alter the predicted states, partially reconciling them with the real-flow field. The last step finally determines the control actions the turbine takes based on the current state and measurements.

Summarizing, the OFF framework offers a prototyping environment for the development and assessment of new dynamic flow modeling strategies. The update steps are kept generic, thereby allowing the user to specify its own update strategy, for instance by switching the dynamic solver or wake model used. Figure 1 depicts the version of the code used here that follows the FLORIDyn framework and uses FLORIS v4 as a surrogate model. The implemented update steps are further detailed in the following sections: Sect. 2.1 further specifies the FLORIS and FLORIDyn models used, and Sect. 2.2 explains how external data are fed into the simulation. Lastly, Sect. 2.3 introduces the control law used in this paper.

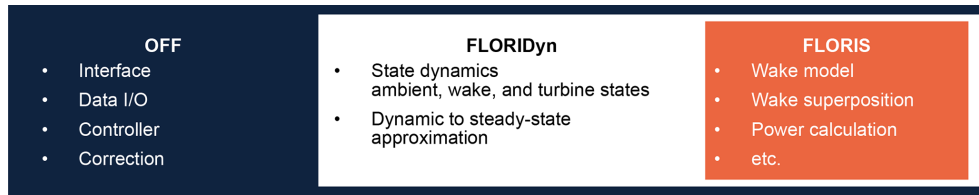


Figure 1. Nested software architecture used for the results presented in this paper: the OFF framework provides the interface to the wake solvers, as well as the controller. In this paper, the FLORIDyn framework is used to model the state dynamics, like the wake advection. The framework approximates the flow field at the location of each turbine and uses FLORIS to calculate measurements like effective wind speeds and power generated.

2.1 Prediction: wake and turbine modeling

The prediction step is segmented into three parts: (i) propagate the states, (ii) run the steady-state surrogate model to get turbine measurement predictions and OP advection speeds for the next time step, and (iii) retrieve information relevant to the controller. The states related to a single turbine T at the x, y, z location $l_{T,x}, l_{T,y}, l_{T,z}$ are propagated as follows:

$$\mathbf{x}_T(k) = \mathbf{A}_1 \mathbf{x}_T(k-1), \quad (4)$$

$$\mathbf{x}_{\text{amb}}(k) = \mathbf{A}_1 \mathbf{x}_{\text{amb}}(k-1), \quad (5)$$

$$\begin{aligned} \mathbf{x}_{\text{OP},x}(k) &= \mathbf{A}_2 [\mathbf{x}_{\text{OP},x}(k-1) + \Delta t \mathbf{x}_{\text{amb},u}(k-1)] \\ &\quad + [l_{T,x}, 0, \dots, 0]^T, \quad \mathbf{x}_{\text{OP},y}(k) = \mathbf{A}_2 [\mathbf{x}_{\text{OP},y}(k-1) \\ &\quad + \Delta t \mathbf{x}_{\text{amb},v}(k-1)] + [l_{T,y}, 0, \dots, 0]^T, \\ \mathbf{x}_{\text{OP},z}(k) &= \mathbf{A}_2 \mathbf{x}_{\text{OP},z}(k-1) + [l_{T,z}, 0, \dots, 0]^T, \end{aligned} \quad (6)$$

$$\mathbf{A}_1 = \begin{bmatrix} 1 & 0 & \mathbf{0} \\ 1 & 0 & \\ & \ddots & \ddots \\ \mathbf{0} & & 1 & 0 \end{bmatrix}, \quad \mathbf{A}_2 = \begin{bmatrix} 0 & 0 & \mathbf{0} \\ 1 & 0 & \\ & \ddots & \ddots \\ \mathbf{0} & & 1 & 0 \end{bmatrix}, \quad (7)$$

where the matrices \mathbf{A}_1 and \mathbf{A}_2 handle the state propagation. With \mathbf{A}_1 , all states besides the first one are propagated one entry further, and the last one is disregarded. The state closest to the turbine is effectively doubled. With \mathbf{A}_2 the first state is not doubled but overwritten by a new input. States propagated with \mathbf{A}_1 do not have a new input yet; e.g., there is no new wind speed value available at this time in the simulation cycle. Therefore, the current wind speed is kept as a prediction. The OP position states, however, do have a new input, the rotor center location, which is why they are propagated with \mathbf{A}_2 . Equation (6) updates them with the turbine location $l_{T,x}, l_{T,y}, l_{T,z}$, referring to the rotor center, as a new state. In a floating-turbine scenario, this could be used to induce a changing turbine and wake location due to repositioning. Note that similar, more detailed state-space descriptions can be found in Gebraad and van Wingerden (2014), Becker et al. (2022a), and Foloppe et al. (2022). A difference between these formulations and the one employed in OFF is that OFF's formulation does not include vertical or horizontal OP deflection based on the yaw and tilt angle of the turbine. Rather, the impact of yaw and tilt turbine misalignment on the wake shape is solely simulated in the wake

model. The code internally decomposes the wind speed and direction into its u and v components to avoid unexpected behavior when switching between 360 and 0°. These are then used along with the time step Δt to advance the location of the OPs through a Lagrangian update; see Eq. (6). The w component is ignored for simplicity. Accounting for the vertical deflection of the wake center might become necessary in some contexts, e.g., for simulations including terrain. However, it was not deemed necessary for the application presented here, i.e., an offshore wind farm. Note that this implementation also assumes that the OP advection speed is equal to the freestream wind speed. Alternatives are the introduction of a constant fraction of the wind speed (see for instance Ciri et al., 2017) or the use of the effective wind speed predicted by the wake model (see for instance Zong and Porté-Agel, 2020). One may also decide to decouple ambient particle advection from the OP advection, thereby allowing the capture of additional wake dynamics such as wake meandering (Lejeune et al., 2022). These approaches, however, increase the computational cost of the model, as it requires the evaluation of the wake equations for every OP at every time step. Equation (5) does not include inputs as new ambient state information is introduced via the correction step; see Sect. 2.2. Similarly, new turbine states may be introduced in the correction or in the control step; see Sect. 2.3.

After the states are propagated, the wake model is evaluated to retrieve predicted measurements. This process uses the so-called temporary wind farm (TWF), which provides a localized approximation of the ambient and wake conditions at a specific turbine location. More specifically, the TWF maps the current dynamic state of the simulation to the corresponding steady-state configuration at any desired position, making it interpretable by the underlying wake model, i.e., FLORIS. For more details, we refer to Becker et al. (2022b). A block diagram example is given in Fig. 2. The graph shows the equivalent of a three-turbine wind farm where turbines T1 and T2 wake turbine T3. Turbines T1 and T2 both receive input from the wind field; add their own states; and pass them on to the first OP, which adds its own states. The set of the three state vectors is then propagated downstream. Downstream, T3 is subject to the wakes of T1 and T2. To calculate the wind speed reduction, one ghost

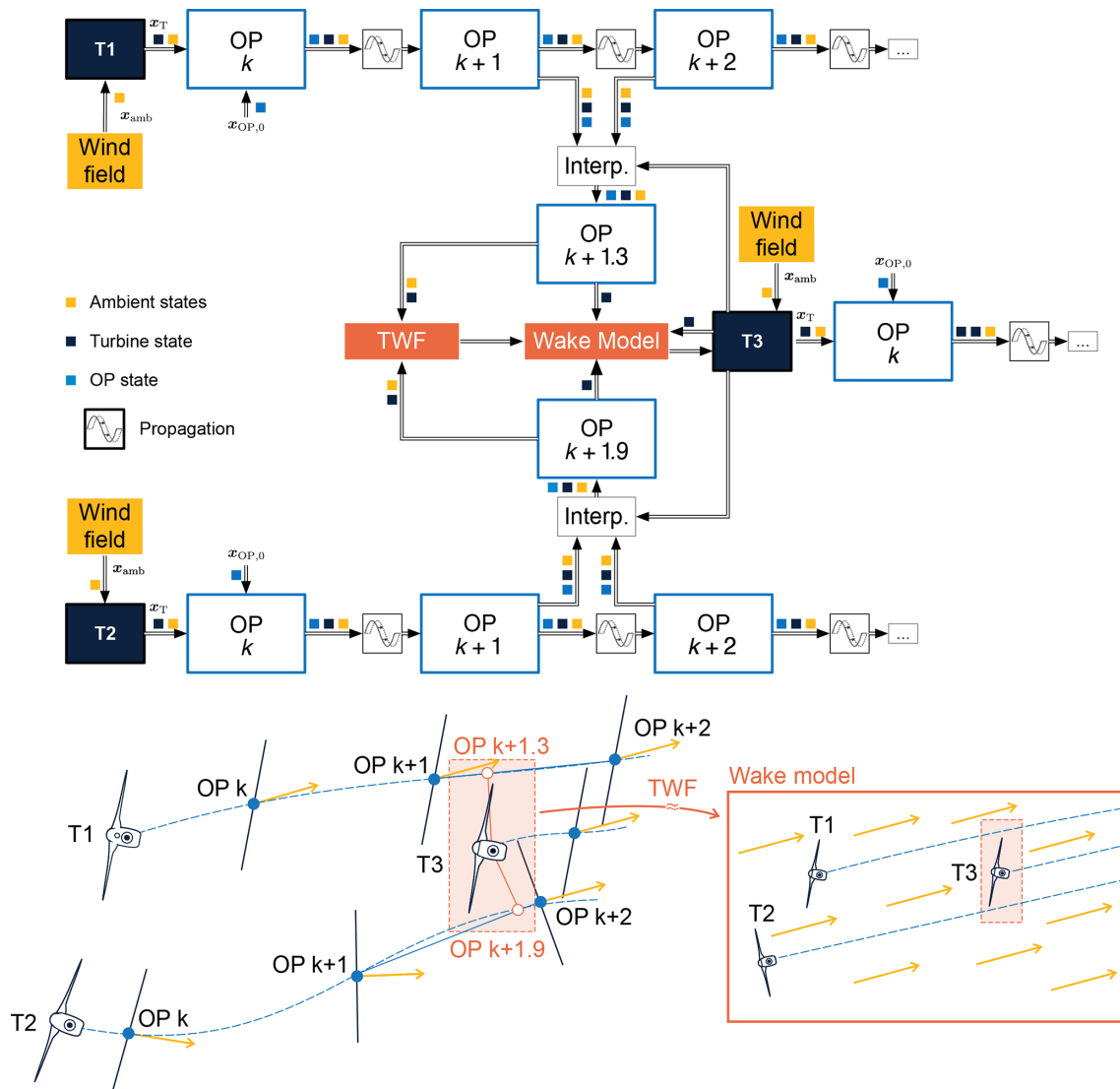


Figure 2. Schematic of the state transportation of turbine states, ambient states and observation point states in a three turbine example. T1 and T2 wake T3. The OPs closest to T3 in the wakes of T1 and T2 are used to create a temporary wind farm (TWF) to simulate the resulting conditions for T3 in the wake model. The colored cubes indicate the states that are passed between the different elements of the software.

OP is interpolated for each impacting wake. The ghost OP is based on the two closest OPs in the wake and minimizes the distance between the chain of OPs and the turbine T3. Its state is a distance-based interpolation of the two parent OPs. The state information of the ghost OPs subsequently approximates the ambient conditions and wind farm surrounding turbine T3. The TWF is then passed on to the steady-state surrogate model for evaluation. This returns predicted measurements like the effective wind speed and power generated. At each time step, a new individual TWF is generated for each of the n_T turbines. This leads to n_T TWF simulations, where each of them contains n_T turbines. The resulting computational cost is discussed in Sect. 4.6. This work interfaces with the FLORIS toolbox and uses the Gauss Curl Hybrid

model (Bay et al., 2023) with default settings and parameters. No parameter tuning was performed to represent the performance achievable with the default settings. The turbine model within FLORIS is based on the $c_p(u)$ and $c_t(u)$ tables (u being the wind speed ahead) of the DTU 10 MW (Bak et al., 2013), corrected with the blade element momentum theory-based cosine loss law for yaw misalignment (Rankine, 1865; Froude, 1889). Specifically, the classical value of 1.88 is retained for the cosine power-loss law exponent. We nonetheless acknowledge that this constant power-loss model does not account for the variability in operating conditions and will therefore likely affect the optimal steering angles computed, as noted by Tamaro et al. (2024).

2.2 Correction: linking measurements and states

In this work, only ambient states are corrected. Schemes to correct the wake location exist (Braunbehrens et al., 2023; Di Cave et al., 2024) but are outside of the scope of this paper. Three ambient states are considered in the presented version of the model: wind direction, wind speed and ambient turbulence intensity. Out of these three, only the wind direction varies in the presented simulations. By design, OFF assumes that measurements are taken at the locations of the turbines. The correction step has to alter the simulation states \mathbf{x}_{amb} to incorporate the new information provided. The basic assumption is made that the wind direction changes uniformly for the entire wind farm. As a result, all wind direction states are overwritten with the new measurement, which is assumed to be noise-free. Practically, this is due to the fact that the measurements used for the wind direction in the experiments stem from a single location; more details are given in Sect. 3.1. In an alternative setup with more measurement locations available, a sensor fusion strategy is necessary. Possible approaches to use turbine measurements to correct ambient states in the field exist, like a weighted map, as done by Farrell et al. (2021); a Kalman filter, as done by Gebraad et al. (2015); or an ensemble Kalman filter, as applied by Becker et al. (2022a).

2.3 Control: state-based decision making

The employed controller is based on Kanev (2020) and implements a yaw steering dead-band controller that relies on a look-up table (LuT) aggregated using FLORIS. Specifically, this LuT associates each wind direction with a set of optimal steering angles. In a dynamic environment, the controller now has to apply the optimized angles based on the current (estimated) ambient conditions. To this end, the controller has an estimate of the wind direction $\hat{\varphi}$, which is updated based on its own value in comparison with the measured wind direction. The estimated wind direction is then used to evaluate the LuT and provide new set points. More precisely, the yaw steering control law is formulated as follows:

$$\varphi_f(k) = f_{\text{filt}}(\varphi_m(k), \varphi_m(k-1), \dots, \varphi_m(0)) \quad (8)$$

$$\hat{\varphi}(k) = \begin{cases} \varphi_f(k) & \text{if } |\varphi_f(k) - \hat{\varphi}(k)| > \varphi_{\text{lim}} \text{ or } k_i \left| \sum_{l=k-1}^{\tau} \varphi_f(l) - \hat{\varphi}(k) \right| > \varphi_{\text{lim}} \\ \hat{\varphi}(k-1) & \text{otherwise} \end{cases} \quad (9)$$

$$\gamma(k) = f_{\text{LuT}}(\hat{\varphi}(k)), \quad (10)$$

where τ marks the time step of the last update of $\hat{\varphi}(k)$ to a new value. The measured wind direction at the time step k and its filtered version are denoted by $\varphi_m(k)$ and $\varphi_f(k)$, respectively. The control law has four elements that need to be supplied: the low-pass filter, f_{filt} ; the dead-band width, φ_{lim} ; the integration coefficient, k_i ; and the LuT, f_{LuT} . These elements determine the behavior of the wind farm, and their adequate tuning is a prerequisite to efficient wake steering. The selection of the parameters φ_{lim} and k_i is the subject

of the case study presented in Sect. 3. The f_{filt} function is omitted for simplicity; instead we assume an ideal noise-free measurement of the wind direction. The LuT is first populated using the serial-refine yaw optimizer integrated into FLORIS (Fleming et al., 2022). While the presented control law focuses on wind direction changes, for completeness, the provided LuT also includes inputs for other freestream atmospheric conditions, such as hub-height turbulence intensity (TI) and free wind speed. These parameters are kept constant in the case study discussed in Sect. 3. During the LuT creation, TI is kept constant at 6%, the wind direction is discretized into 1° bins, and the wind speed varied from 6 to 10 m s^{-1} in 1 m s^{-1} steps. The baseline (BL) controller follows the same update law, with the difference that it enforces turbine alignment with $\hat{\varphi}(k)$. The controllers are continuously updated with every 5 s time step of the simulation; the limits of the intentional misalignment with the main wind direction are set to $\pm 30^\circ$.

3 Case study

The “Case study” section is split into two parts: Sect. 3.1 discusses the selection and processing of the field data and the resulting simulation conditions. Section 3.2 then showcases the use of the OFF model to predict the performance of controllers and how a pre-selection can be made from a large number of controllers.

3.1 Simulation setup

The case study is based on the southwestern corner of the Hollandse Kust Noord (HKN) wind farm, which consists of 10 turbines, here modeled as DTU 10 MW reference turbines with a diameter of $D = 178.3 \text{ m}$ (Bak et al., 2013). The layout has been scaled to preserve the same relative distances between the turbines compared to the original ones. It features three critical wind directions for which three or more turbines stand in line, namely for $\varphi \approx 175, 201$ and 265° . To effectively challenge the controllers, a wind direction time series that is both realistic and includes variations across all three directions (along with smooth transitions between them) is desirable. Accordingly, to drive the simulation, we use 23 h and 45 min of data recorded by a vertical ZephIR 300M wind lidar at the HKN site on 28 March 2023, as shown in Fig 3 (Knoop, 2019). This date is before the wind farm went online, which happened in December 2023 (<https://www.crosswindhkn.nl/>, last access: 28 October 2024). The lidar provides horizontal and vertical wind speeds, along with wind directions, at various heights. For this study, measurements at 108 and 133 m were used to interpolate the wind direction at a hub height of 119 m. In order to recover the underlying wind direction changes, the ensuing signal was then zero-phase low-pass-filtered using a fourth-order Butterworth filter with a cut-off frequency of $1/600 \text{ Hz}$, equivalent to van den Broek et al.

(2024). The filtered output, as well as the wind direction input for the precursor, was eventually fed to the yaw steering controllers. For the controller, this results in an unrealistic noise-free signal, which would otherwise be a function of a filter or distributed estimation algorithm, e.g., Annoni et al. (2019), van der Hoek et al. (2021) and Howland et al. (2022). Since this work aims to demonstrate the surrogate model capabilities and not necessarily the effectiveness of an integrated wake steering controller, the added complexity of a wind direction estimator has been left out. Figure 4 depicts the lidar location in the context of the HKN wind farm site and its closest neighboring wind farms (adapted from <https://map.4coffshore.com/offshorewind/>, last access: 28 October 2024). The figure shows that the used wind direction range overlaps with the direction in which the Prinses Amalia Windpark is located, which may have an impact on the measurements. Therefore, for the purposes of this paper, changes in wind speed are neglected, and a constant mean wind speed of 8 m s^{-1} is imposed for all simulations. This wind speed corresponds to the turbine's underrated operation region, where the impact of wake losses is most significant, thereby offering the greatest potential for power maximization using wake steering. The OFF simulations ran with a shear coefficient of 0.12, a turbulence intensity of 6 % and no veer. Each turbine uses 200 OPs to describe the wake. With a time step of 5 s and a freestream wind speed of 8 m s^{-1} , this results in 8 km of simulated wake, or 44.9 D, which reaches beyond the boundaries of the simulated farm (approximately $5 \times 5 \text{ km}$ region).

3.2 Predicted controller performance

The controller (Eq. 9) updates the wind direction estimate based on one of two conditions: (i) the difference between the current wind direction and the measured direction is larger than φ_{lim} , or (ii) the integrated error exceeds the threshold. To ensure a sensible range of parameters, we investigate the balance between these two conditions: Fig. 5 compares which of the two triggers dominates and causes a LuT reevaluation. The results show that the chosen range of $\varphi_{\text{lim}} \in [2, 10]$ and $k_i \in [0.01, 0.09]$ leads to both edge cases: a predominant role of the threshold and a predominant role of the integration constant.

The selected ranges of φ_{lim} and k_i with a 1° and 0.01 discretization, respectively, lead to 81 possible combinations of dead-band settings for two types of controllers, LuT and baseline. All 162 controllers are evaluated using OFF, with the results reported in Fig. 6. The figure displays the controller performance in three dimensions: (i) energy generated, (ii) number of yaw actuator activations and (iii) accumulated yaw travel. Figure 6a compares the activations with the energy generated, (b) the energy with the yaw travel and (c) the yaw travel with the activations. All three figures are colored based on their φ_{lim} setting. Looking at the baseline controllers in Fig. 6a, it becomes apparent that a

smaller φ_{lim} results in many more activations but not in an increase in energy. This is a result of a power curve that has little sensitivity to small yaw angle misalignment, possibly highlighting the need for more adequate power-loss exponent parametrization (Tamaro et al., 2024). On the other hand, the LuT-controlled cases still benefit from the increased number of activations, but with diminishing returns. Notably, there is little difference in the number of activations between baseline and LuT controllers. This is due to the fact that Eq. (9) updates the wind direction estimates for baseline and LuT controllers alike. In contrast, the LuT controllers accumulate a much larger amount of yaw travel than the baseline cases, as depicted in Fig. 6b. This is to be expected as the baseline controllers only drive the turbines to full alignment, while the LuT may vary between large positive and negative misalignment angles. Figure 6c shows the relation between activations and yaw travel. The plot completes the picture drawn by (a) and (b): while the number of actuator activations may be similar between baseline and LuT controllers, the yaw travel is not. From these results, one could start to deduce which controllers fall within a reasonable range for set turbine limitations. For instance, if there is an average yaw activation budget of 10 times per hour per turbine, the number of relevant controllers can be reduced. In this case, $23.75 \text{ h} \times 10 \text{ turbines} \times 10 \text{ activations per hour per turbine}$ leads to a maximum of $= 2375$ activations, which limits the dead-band width at $\varphi_{\text{lim}} \geq 5^\circ$. The results show that if yaw travel and turbine misalignment are not of concern, a LuT controller may result in a significant improvement in energy generated.

In this work, we select the controllers for verification based on the performance difference due to the switch from baseline to LuT control. Figure 7 shows how the addition of wake steering increases the amount of yaw steering in comparison to the increase in farm energy while maintaining the same φ_{lim} and k_i . The minimize-yaw-travel and maximize-energy approximated Pareto front indicates several candidates that offer a trade-off between the increase in energy and the resulting increase in yaw travel. Three combinations of φ_{lim} and k_i along the front are selected for LES verification: one that yields a steep increase in energy for a relatively low increase in yaw travel ($\varphi_{\text{lim}} = 10^\circ$ and $k_i = 0.05$), one that tries to achieve the maximum energy possible ($\varphi_{\text{lim}} = 2^\circ$ and $k_i = 0.09$) and one intermediate configuration ($\varphi_{\text{lim}} = 5^\circ$ and $k_i = 0.02$).

Next to the results presented in Figs. 6 and 7, which summarize the overall performance, a wind-direction-resolved investigation of the results can also be useful. Figure 8a shows the energy generated by the baseline and LuT controllers with $\varphi_{\text{lim}} = 5^\circ$ and $k_i = 0.02$ versus the wind direction. More specifically, a sliding time window of 600 s is used to calculate the energy, as well as the mean wind direction and wind direction change. The result is a smooth transition between multiple 10 min average bins. The energy data are plotted over the mean wind direction and, therefore, go back

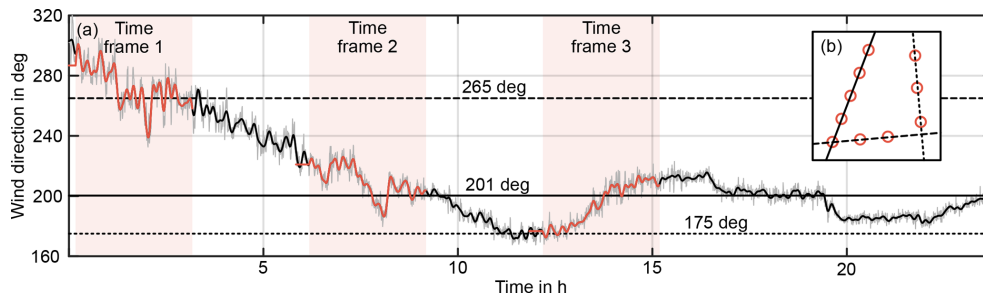


Figure 3. (a) The full 23 h and 45 min wind direction time series investigated in this work. The series is based on field data recorded by a vertical lidar at the HKN site on 28 March 2023 (Knoop, 2019), depicted in gray. The low-pass-filtered data are given in black. Three marked subsets of the time series have undergone LES for verification purposes. Each LES time frame (TF) has a length of 3 h, along with a 20 min initialization period. Critical wind directions are marked in (a) and depicted relative to the farm layout in (b).

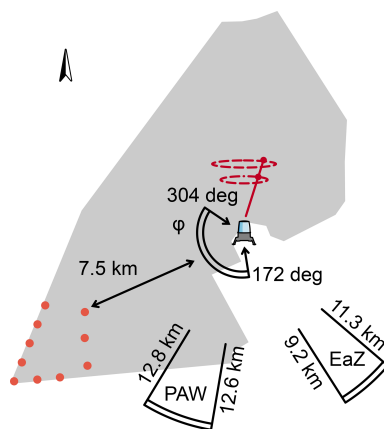


Figure 4. Lidar location within the HKN wind farm site with respect to the neighboring wind farms, Prinses Amalia Windpark (PAW) and Egmond aan Zee (EaZ), as well as its distance to the closest considered turbine. The measurements used in this study range from 172 to 304°, part of which, 190 to 211°, may be influenced by PAW. Note that the data used were recorded before HKN went online.

and forth along the x axis (compare Fig. 3). In direct comparison, it is evident that the LuT manages to outperform the baseline controller as expected for large parts of the wind direction, though not for all of them. Figure 8b depicts the wind farm efficiency as the ratio of the energy generated by the LuT divided by the baseline energy. The data show that the LuT-driven controller shows advantageous behavior for wind directions between 160 and 220° but struggles to consistently outperform the baseline in the wind direction transitions between 220 and 300°. Figure 8b also depicts the wind farm efficiency as predicted by FLORIS during the LuT creation, so under ideal steady-state conditions. The difference between the achieved wind farm efficiency and the predicted one shows that the changing turbine states and wind direction state can lead to suboptimal performance and that the wind farm efficiency predicted by the LuT is, in most cases, an upper limit, only achievable under steady-state conditions

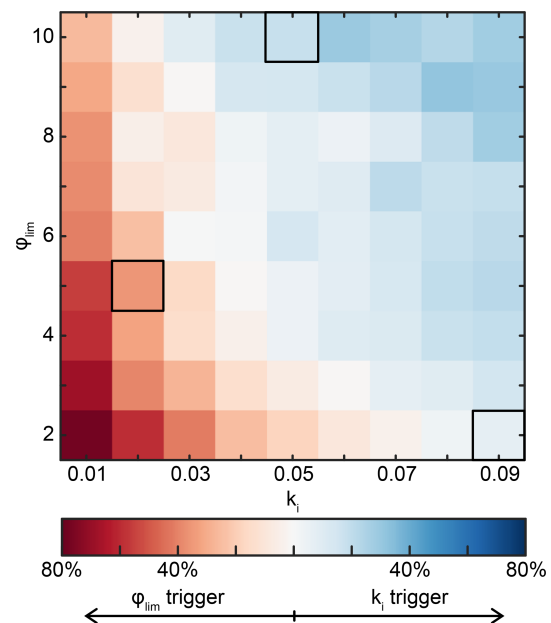


Figure 5. Comparison of the trigger condition that leads to an updated wind direction based on Eq. (9). Red means that the controller is updated more often based on an exceeded dead band, and blue means that the integrated error crosses the threshold more often. Marked squares indicate controller settings selected for verification in Sect. 4

(Lejeune et al., 2024). The occasional localized overshoots beyond this performance envelope can be attributed to the dynamic nature of the simulations. For instance, in the absence of wake steering, a downstream turbine aligned with the wind direction would always operate within the wake of the upstream turbine. However, in a dynamic setup, transient wind direction changes may temporarily shift the wake, allowing the downstream turbine to operate under improved conditions and produce more power than in the steady-state scenario. Nevertheless, these overshoots are temporary, eventually converging back to the steady-state value or lower. This observation highlights the need for dynamic wake mod-

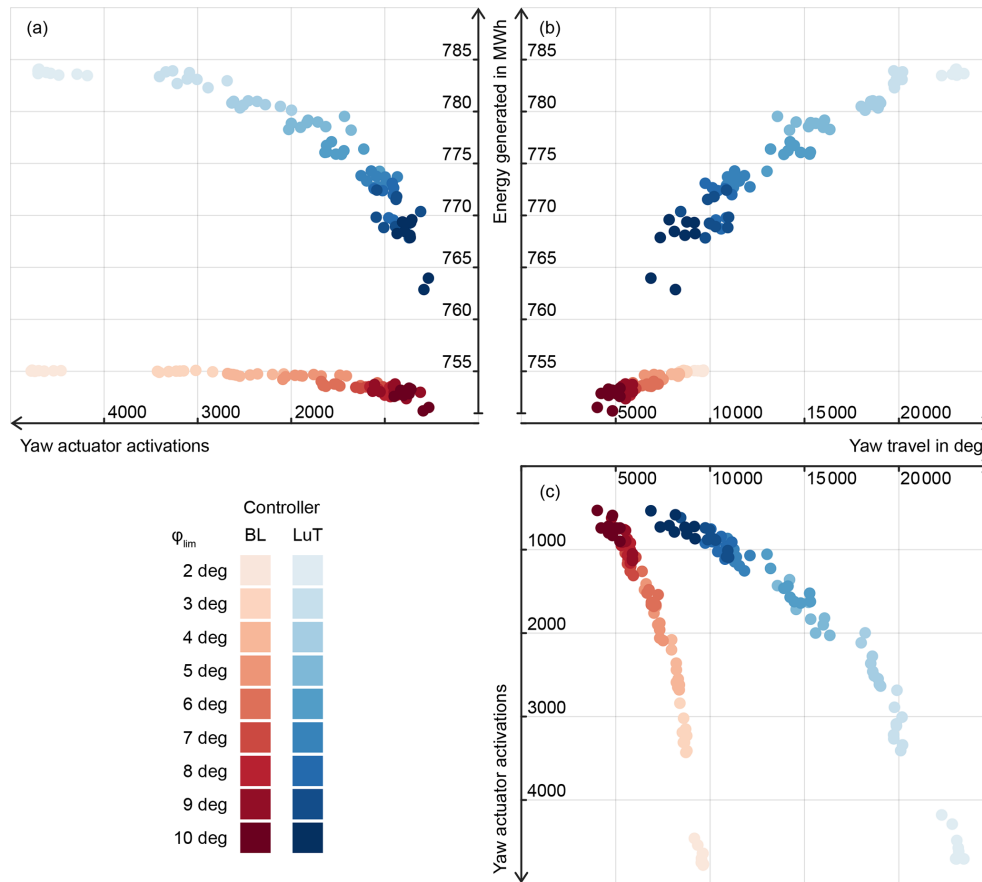


Figure 6. (a–c) Unfolded three-dimensional performance comparison of the dead-band controllers across the full simulated time frame in OFF. Next to the energy generated by the 10-turbine wind farm, there is the accumulated yaw travel in degrees and the number of times the yaw actuators are activated. The baseline controllers are colored in different shades of red, based on φ_{lim} . The LuT controllers are colored in blue, respectively.

els to optimize wind farm control strategies during transient periods. Lastly, Fig. 8c shows the wind farm efficiency over the mean wind direction, as well as the mean wind direction change. This serves as an approximated state-space representation of the wind direction and how it influences the wind farm performance. Since the y axis depicts the wind direction change, the state of the wind direction moves left in the lower half of the plot and right in the upper half. In conclusion, the performance of a wake steering controller is not trivial to assess in a time-marching simulation due to changes in the flow field and in the turbine state. As a result, the wind farm can exhibit very different performance for the same wind direction and wind speed.

4 HKN cases that underwent LES

This section verifies the selected controllers from Sect. 3.2 across the three subsets of the 24 h period simulated in OFF and FLORIS. The OFF results are compared to both the LES and FLORIS, allowing the effect of the added dynamics to

be investigated. Section 4.1 further introduces the LES setup and the three time frames. Sections 4.2–4.4 investigate the power generated on a turbine, farm and statistical level, respectively. This is followed by Sect. 4.5, where the energy generated is compared between the simulations.

4.1 Large-eddy simulation

The 10-turbine wind farm is simulated as actuator discs in a $5 \times 5 \times 1$ km simulation domain in SOWFA (Churchfield et al., 2012). The domain is discretized in $300 \times 300 \times 100$ cells and simulated with a time step of 0.5 s. A grid resolution of $16.6 \times 16.6 \times 10$ m was chosen to balance computational cost and accuracy. Given the turbine rotor diameter of 178.3 m, this results in a normalized cell width of $\Delta x = \Delta y = 0.094 D$, but since the turbines are often diagonally oriented in the domain during the simulation, there is a worst-case ratio of $\sqrt{2}\Delta x = 0.132 D$. The neutral turbulent precursor is developed over 3×10^4 s. A surface roughness of 0.0002 m enforces a horizontal turbulence intensity of $\approx 6.2\%$ at hub height. The initial wind direction is kept con-

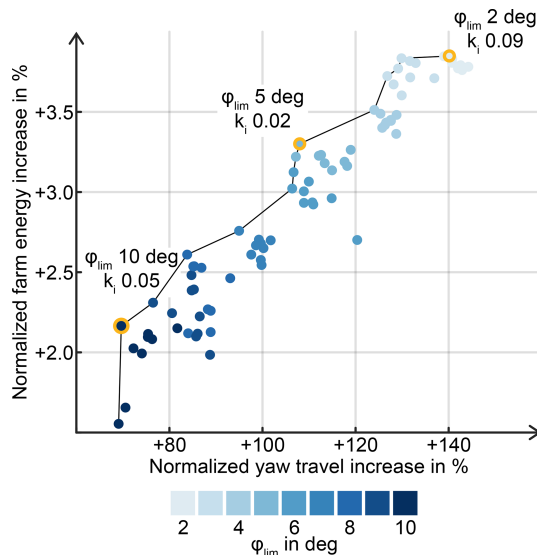


Figure 7. LuT controller performance normalized by the respective baseline controller with identical φ_{lim} and k_i settings. Three marked settings along the min–max approximated Pareto front are chosen for verification. The coloring is based on φ_{lim} .

stant at 225° during the precursor to allow changes of $\pm 45^\circ$ in the successor phase, using the same southern and western inflow planes. Three 3 h successor phases underwent LES, as marked in Fig. 3. A 1200 s spin-up phase with fixed wind direction is first run in order to fully propagate the wake, after which 10800 s of the low-pass-filtered field data is used to uniformly change the wind direction. All three time series are offset to start with 225° , while the wind farm layout is rotated in the LES, thereby ensuring the same precursor can be used across all three simulations. The veer of the precursor is $< 2^\circ$ across the rotor plane, and the shear exponent is ≈ 0.075 . Figure 9 shows the wind farm in the rotated domain and a qualitative visualization of the wind directions during the simulation. The latter is achieved by a pizza-shaped histogram with bins of 2.5° in width, translated onto the position of each turbine. Darker bins indicate more frequent wind directions, lighter ones less frequent ones, thereby visualizing the wind turbine interactions. Next to the domain orientations, Fig. 9a–c also depict information relevant to all three TFs; (a) the turbine indexes, (b) the simulated domain size, and (c) the normalized distance between turbine T0 and the other turbines.

To link the dynamics back to the layout, time is also given in convective timescales. This denotes the time taken by a particle to travel a characteristic length within the domain. We choose this length to be five turbine diameters, as this is closely related to the spacing of the turbines; see Fig. 9c. The freestream velocity is used to normalize the characteristic length:

$$t_c = \frac{5 \cdot 178.3 \text{ m}}{8 \text{ m s}^{-1}} = 111.4 \text{ s}. \quad (11)$$

4.2 Power generated

The power generated by SOWFA is calculated based on an actuator disc model. Simulated on a coarse grid, these tend to overestimate the power generated by the turbines, which is a known issue (Martinez et al., 2012; Shapiro et al., 2019). The resulting mean ratio between the power generated in SOWFA and OFF is 1.34. Based on this mismatch, the power measurements by SOWFA in the following plots are either normalized or marked with a “c”, which denotes that the power was divided by the correction factor. Next to the LES data, the zero-phase-filtered power output data from the LES are also used to analyze model and controller performance. This filtering removes the influence of turbulence on turbine power, isolating the underlying trends more consistently with the wake dynamics that OFF aims to describe. To this end, a fourth-order Butterworth filter is used with a cutoff frequency of $1/370 \text{ Hz}$. The cutoff frequency is motivated by the results presented later in Fig. 13b. Note that the individual turbine signals are filtered. Derivatives, like farm power or energy, then use either the filtered turbine power or the original signal and are marked with “lpf” if they use the filtered data.

The match between OFF and SOWFA is investigated in three ways: (i) on a selected turbine level for a selected controller, (ii) on a farm level for a selected controller and (iii) on a statistical level. Figures 10 and 11 investigate the data collected for turbine T3. The data were recorded using the dead-band LuT and baseline controllers with $\varphi_{\text{lim}} = 5^\circ$ and $k_i = 0.02$, one of the settings selected for validation based on the results in Fig. 7. Turbine T3 is selected as it acts as an upstream turbine in TF 1 (see Fig. 9) and as a downstream turbine in TFs 2 and 3. This is mirrored in Fig. 10, where the turbine produces its maximum power during the initial hours of the time series. The LuT-controlled case diverges as the turbine engages in yaw steering and sacrifices power to redirect its wake. During later periods of the simulation, T3 becomes a downstream turbine, and its power generated significantly decreases. Here, we can see an inverse effect, where T3 benefits from the yaw steering of other turbines and generates more power in the controlled case than in the baseline case.

Zooming in on the TFs that underwent LES, Fig. 11 gives a more detailed look into the match of the LES data and the OFF data. Qualitatively, we observe an overall fitting trend between the LES signal and the power predicted by OFF. An immediate difference between the two is the influence of turbulence on the LES signal. This causes noticeable variations that OFF cannot predict. The low-pass-filtered signal removes this discrepancy partially and shows a signal that is overall better aligned with the OFF signal. One aspect that gets lost due to this filtering is the response of the turbine power to yaw angle changes: Fig. 11b shows the efficiency of the turbine during a period where turbine T3 engages in yaw steering to lessen the wake interaction with a

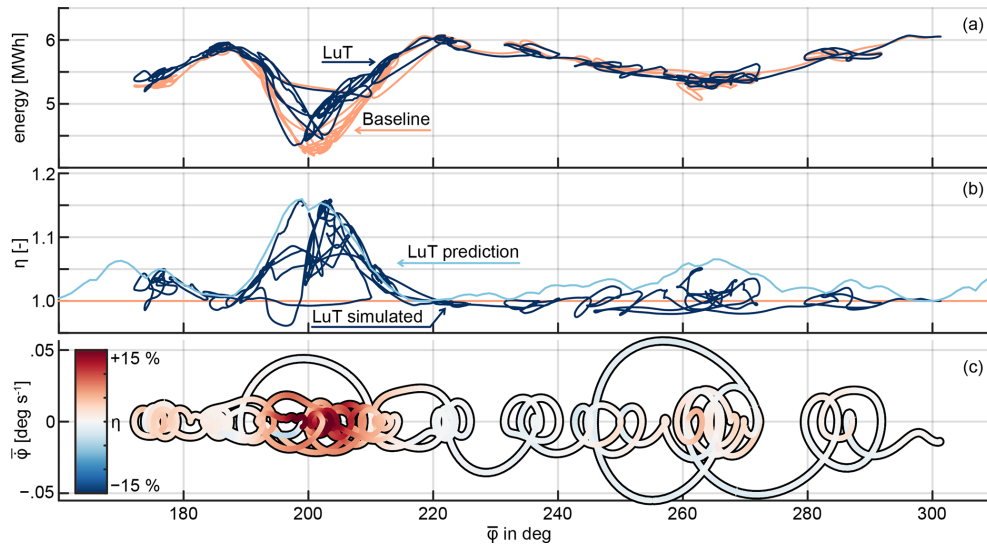


Figure 8. (a) Energy generated by the wind farm, calculated based on the power integrated over a sliding time window of 600 s. The energy is plotted over the mean wind direction $\bar{\phi}$ during the 600 s for both LuT and BL control. The resulting wind farm efficiency is given in (b) and (c). Next to the wind farm efficiency, (b) also depicts the predicted LuT steady-state wind farm efficiency. In (c), the efficiency is given as color, while the y axis denotes the mean wind direction change $\bar{\phi}$ over 600 s. The controller settings are $\phi_{\text{lim}} = 5^\circ$ and $k_i = 0.02$.

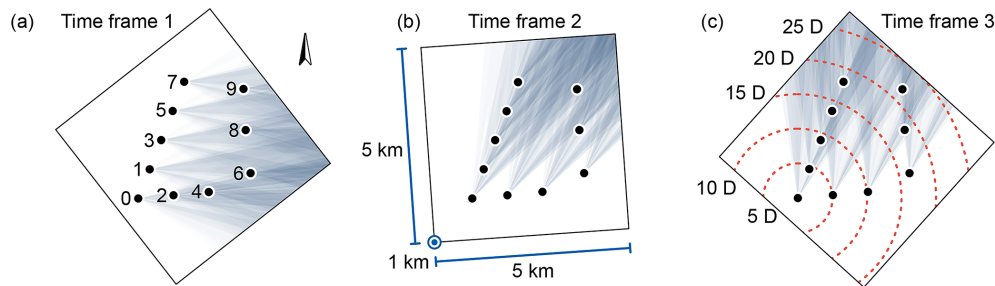


Figure 9. Collection of the three simulated LES TFs of the 10-turbine subset of the HKN wind farm. Panels (a–c) feature pizza-shaped histograms of the wind direction centered in the turbine locations: darker colors indicate more frequent wind directions and, therefore, turbine interactions that happen more frequently during the TF. Additionally, (a) depicts the turbine indexes; (b) the simulated domain size; and (c) the relative distance between turbine T0 and the other turbines, normalized by turbine diameters. The domains are rotated such that the initial wind direction is aligned with the precursor, and the remaining wind direction time series can be simulated with the same inflow planes.

downstream turbine. In OFF, the rotor misalignment causes sharp decreases and increases in efficiency, while the change is either smoothed out by filtering or hidden in the noise for the LES data. Reoccurring discrepancies between OFF and the low-pass-filtered LES data appear in the form of a phase shift, mainly visible with the baseline power signal: OFF displays slightly delayed reductions and recoveries compared to SOWFA. This might be the product of a wake that advected too slowly, which is notable as similar models specifically slowed their advection speed down for a better match with reference data. Another difference between OFF and the LES data is visible in the turbine efficiency displayed in Fig. 11d and f: OFF tends to either match or overestimate the effect of yaw steering on the turbine efficiency, compared to the filtered LES signal. This may be attributed to the fact that OFF

describes a middle ground between an overconfident steady-state model and a more realistic LES.

Figure 12 moves from the turbine power described previously to the farm level. As the scale increases, the differences between the signals decrease. On a farm level OFF shows a qualitatively better match than on a turbine scale, where differences become much more clear. The farm power efficiency is also more balanced compared to the turbine level; both over- and underestimations are present if there is a mismatch, which suggests a lower bias. The improved performance on a farm scale may stem from different sources. (i) The fact that turbines are distributed throughout the farm makes it more likely that if one is not waked, another one may be. As a result under- and overestimation may cancel out. (ii) Looking at an individual turbine, small increases in

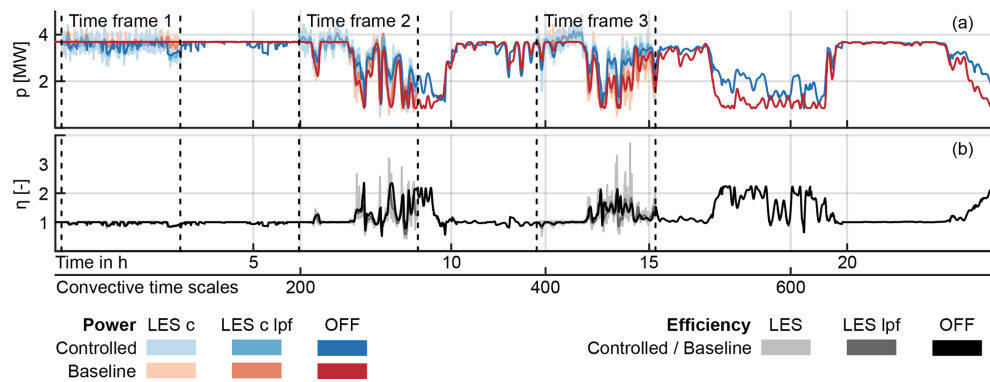


Figure 10. Power generated (a) and efficiency with respect to the baseline (b) of turbine T3 throughout the full simulated wind direction time series. “LES c” refers to the corrected SOWFA data, and “lpf” refers to the zero-phase low-pass-filtered data. The controller settings are $\varphi_{lim} = 5^\circ$ and $k_i = 0.02$. The detailed data from the time frames are provided in Fig. 11.

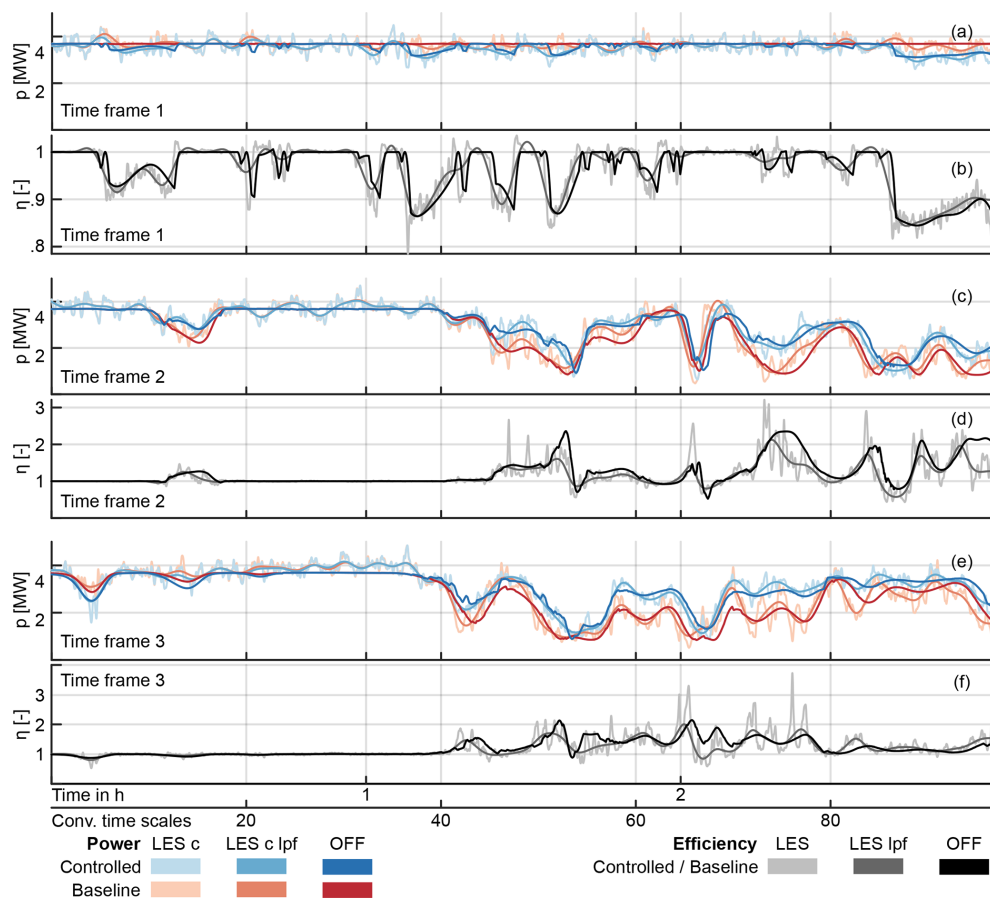


Figure 11. Power generated (a, c, e) and efficiency with respect to the baseline (b, d, f) of turbine T3 during the three simulated TFs. “LES c” refers to the corrected SOWFA data, and “lpf” refers to the zero-phase low-pass-filtered data. The data are a subset of Fig. 10.

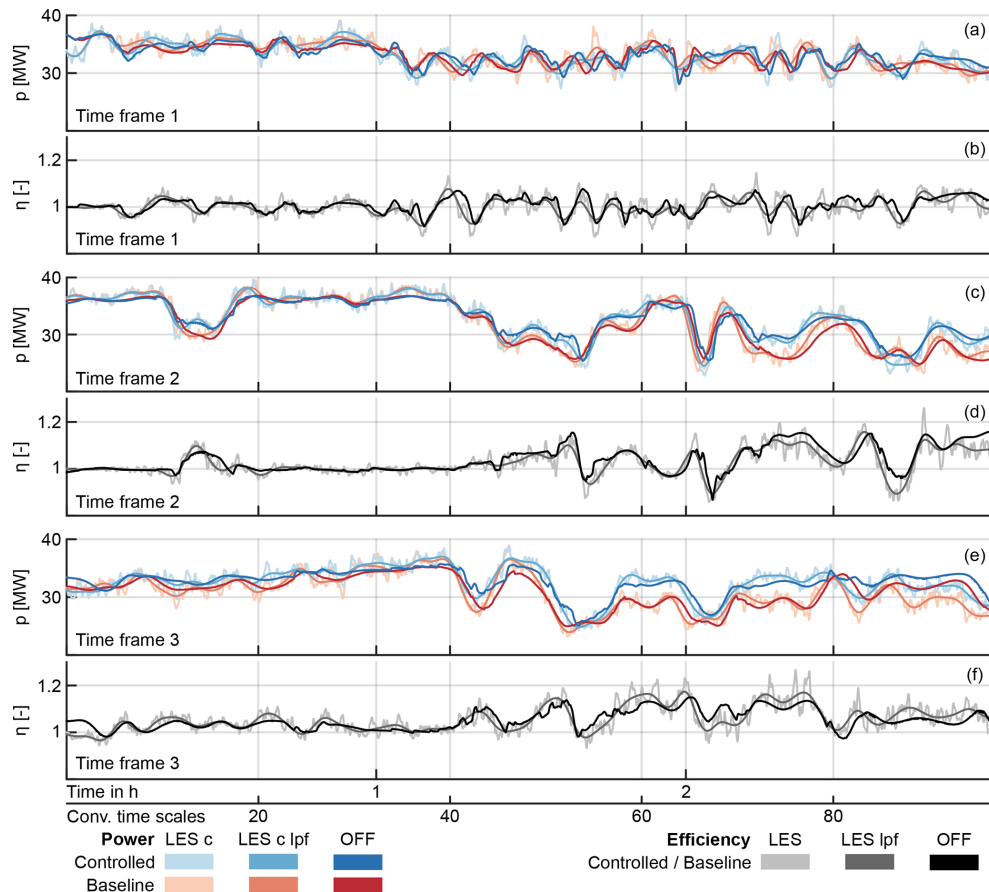


Figure 12. Farm power generated (a, c, d) and efficiency with respect to the baseline (b, d, f) during the three TFs. “LES c” refers to the corrected SOWFA data, and “lpf” refers to the zero-phase low-pass-filtered data. The dead-band controller settings are $\varphi_{lim} = 5^\circ$ and $k_i = 0.02$.

wind speed lead to a large amplification of the power generated. As a result, mismatches create a large error. However, in the presented farm context the power contribution of waked turbines is small compared to the free-stream turbines. The data presented in Fig. 12a and b also highlight TF 1 as a difficult period for wake steering to achieve consistent gains.

4.3 Power signal correlation

The results presented in Figs. 10–12 show the similarities but also the discrepancies between OFF and the LES with respect to power generated. In the OFF environment, fluctuations in the power signal are due to (i) wind direction changes, (ii) control set point changes and (iii) delayed wake dynamics. By contrast, the LES environment also reflects fluctuations due to turbulence and wake meandering. These latter two factors contribute to higher-frequency effects, raising the question: which frequency ranges does OFF effectively capture? And which frequencies could also be represented in a steady-state model?

To answer this question, we investigate the correlation between the power signals. Assuming that the discrepancies between OFF and the LES are of a high-frequency nature, one would expect that the correlation between the two models increases as high-frequency fluctuations are filtered out. In turn, with too-aggressive filtering, the correlation should eventually decrease as the LES signals lose components described by OFF. Based on these assumptions, the individual turbine data of TFs 1–3 for the baseline and LuT dead-band ($\varphi_{lim} = 5^\circ$, $k_i = 0.02$) controllers are correlated between OFF and the LES. A total of 180 h of data, or 18 h per turbine, are subsequently processed. Figure 13a illustrates the influence of the cutoff frequency of the fourth-order Butterworth filter applied to the LES on the correlation score recorded by OFF, while Fig. 13b depicts the resulting average correlation error. The average correlation error is defined as the mean distance of the turbines to 1 for all three TFs:

$$e_{corr} = \frac{1}{n_{DT}} \sum_{i_{TF}} \sum_{i_T} [1 - \text{corr}(p_{OFF}, p_{LES})], \quad (12)$$

where p is the power of turbine i_T in TF i_{TF} , and $n_{DT} = 5 + 6 + 6 = 17$ is the total number of downstream turbines considered summed across all three TFs. Combining the baseline and controlled cases, the minimum for e_{corr} is achieved for $f_{\text{cutoff}} = 1/370 \text{ Hz} = 1/3.33 t_c^{-1} = 0.0027 \text{ Hz}$. In contrast to OFF, the collective minimum for FLORIS is reached at $1/520 \text{ Hz} = 1/4.68 t_c^{-1} = 0.0019 \text{ Hz}$, so at a lower frequency. This gap is explained by the added wake dynamics in OFF, as OFF uses the same FLORIS model in its core. This cutoff also aligns with the literature on wake meandering, which is not captured by OFF: Lio et al. (2021) finds the wake meandering frequency to be around $\frac{u_\infty}{20 D}$, which equals 0.0022 Hz for the presented study. Larsen et al. (2007), on the other hand, suggest a higher frequency, which, for this study, equals 0.022 Hz . We can conclude that OFF does describe the wake dynamics up to the wake meandering frequency. Additionally, we note that OFF leads to a lower error than FLORIS; while OFF finds its minimum at $e_{\text{corr}} = 0.11$, FLORIS returns $e_{\text{corr}} = 0.19$. It should be noted that the filtering timescale used to preprocess the wind direction signal ($1/600 \text{ Hz}$) may limit OFF's performance, as it filters out relevant dynamic scales. Related work by Simley et al. (2020) suggests, for instance, that mean wind direction changes may occur with a frequency of up to $1/270 \text{ Hz}$. Rerunning the LES with a higher cutoff frequency would likely increase OFF's effective cutoff frequency estimation; however, this was not feasible within the scope of the present work.

Figure 14 provides more insight into the source of the correlation error. Figure 14a and b show the correlation error in OFF, split into LuT cases (a) and BL cases (b). This is accompanied by the results for FLORIS, depicted in (c) and (d), also split into LuT cases and BL cases, respectively. Upstream turbines, like T0, T1, T3, T5 and T7 for TF1, are neglected in Figs. 13 and 14 as they are operating at close-to-maximum power in OFF and FLORIS, while their LES counterparts are affected by turbulence (see for instance Fig. 11a). As a result, the turbines modeled in OFF and FLORIS experience no excitation, while the LES ones do. This leads to effectively no correlation between the signals.

Looking at which turbines lead to the larger e_{corr} for FLORIS, the turbines in TF 1 contribute a large share, as well as turbine T9 in TF2. Based on Fig. 9, we can see that TF 1 features long-distance turbine-to-turbine interactions. This fact, paired with the varying wind direction, leads to a situation where the steady-state approximation of FLORIS fails and where wake dynamics play a significant role in the power generated. This also complements the observation from Fig. 12b, where it was visible that TF 1 is a challenging case for the steady-state-based LuT controller. A notable similarity between OFF and FLORIS is that the LuT cases lead to a higher error than the baseline cases. One reason for this discrepancy could be that the turbine model does not accurately capture the impact of larger misalignment angles. This would motivate turbine model corrections, as suggested by Heck et al. (2023) and Tamaro et al. (2024). Addition-

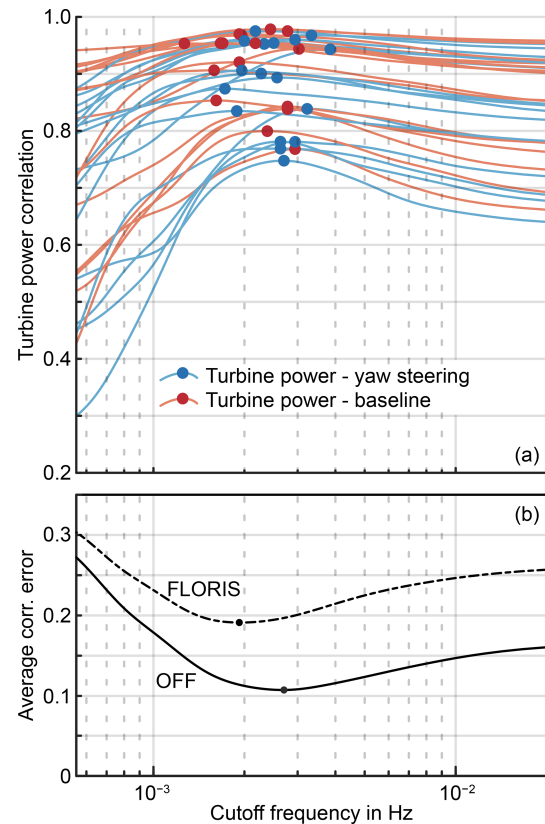


Figure 13. (a) Correlation of the downstream turbine power in OFF and the LES. The LES data are zero-phase low-pass-filtered with varying cutoff frequencies. Each line corresponds to the correlation of one turbine, blue lines are the data from the controlled TFs, and red lines are from the baseline ones. The dot represents the maximum correlation from a given turbine. The average error is depicted in (b) and is minimal for $f_{\text{cutoff}} = 1/370 = 0.0027 \text{ Hz}$. Additionally, there is the line for the correlation of the FLORIS data with the LES. Its minimum is located at $1/520 \text{ Hz}$. The dead-band controller settings are $\varphi_{\text{lim}} = 5^\circ$ and $k_i = 0.02$.

ally, this error may be partially rooted in the wake dynamics triggered by LuT control. Indeed, LuT-based wake steering tends to amplify changes in wind direction: a variation of just a few degrees in the wind direction may, under certain circumstances, induce a yaw-offset angle change that is 10 times greater than the original wind direction change (Lejeune et al., 2024). This results in more frequent and larger variations in wake states.

4.4 Power error statistics

Section 4.2 first investigates the turbine power, then the farm power, as well as the role of timescales. This discussion is limited to one set of controller settings, $\varphi_{\text{lim}} = 5^\circ$ and $k_i = 0.02$. For brevity, we denote the controller settings as $(\varphi_{\text{lim}}, k_i)$ in the following paragraph. Two more sets of settings underwent LES, namely $(2, 0.09)$ and $(10, 0.05)$. Ta-

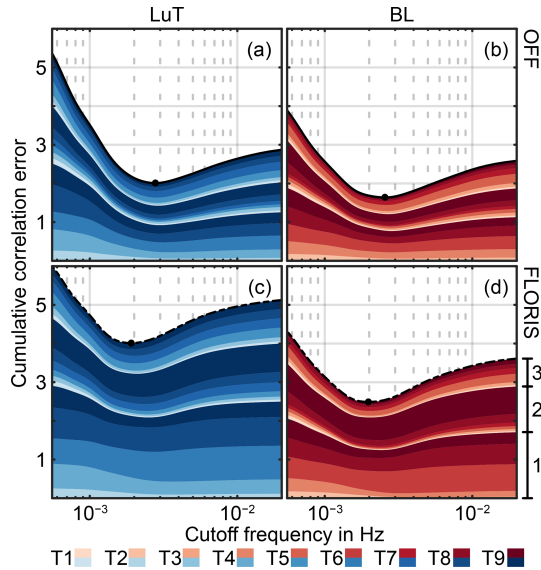


Figure 14. Cumulative correlation error between the turbine power from the LES and OFF (a, b) and FLORIS (c, d). The data are split into the LuT cases (a, c) and the baseline cases (b, d). The shaded areas indicate the contribution of each downstream turbine across the three TFs on top of each other. With (d) it is indicated which layer relates to the corresponding TF. The dead-band controller settings are $\varphi_{\text{lim}} = 5^\circ$ and $k_i = 0.02$.

ble 1 summarizes characteristic error quantities for all controllers. The table combines the three TFs for each controller setting to calculate the difference between the OFF prediction and FLORIS prediction. The table lists the normalized root-mean-square error (NRMSE) for the turbine and farm power, as well as the correlation of both signals. The normalization was done with the corrected LES data. The values show that the addition of dynamics renders OFF more robust towards the addition of yaw steering, compared to FLORIS: while the turbine and farm NRMSE slightly decrease for OFF, there is a notable increase for FLORIS related to the switch from BL to LuT operation. Similarly, the correlation of the farm and turbine power decreases for both OFF and FLORIS, but the steady-state approximation results in a larger decrease; e.g., for (2, 0.09), the farm power correlation by OFF decreases by ≈ -0.03 compared to ≈ -0.11 for FLORIS. However, both OFF and FLORIS achieve similar correlation and error results for baseline operation. An explanation can be that the LuT creates wind farm states that are more sensitive to environmental changes. As a result, the modeled wake dynamics become more relevant. Also notable is the NRMSE decrease for both models with the switch from turbine level to farm level, from values between 0.17 and 0.27 to values between 0.04 and 0.06. Consequently, model inaccuracies on a turbine level do not necessarily lead to equally large errors on a farm level. This also indicates that going forward, improved model descriptions might lead to

less uncertainty on a turbine basis but might show diminishing returns on a farm scale.

4.5 Energy generated

Section 4.2 investigates the power generated by the wind farm at different time and turbine scales. This section complements the results with a discussion about the energy generated. More specifically, the efficiency of the wind farm is compared between the LES and the surrogate models. The efficiency is calculated as the ratio of the farm energy generated using LuT control, normalized by BL control, integrated over a time window ΔT :

$$\eta(t, \Delta T) = \frac{\int_t^{t+\Delta T} \Delta t \sum_{n_T} p_{\text{LuT}}(\tau) d\tau}{\int_t^{t+\Delta T} \Delta t \sum_{n_T} p_{\text{BL}}(\tau) d\tau}, \quad (13)$$

where p refers to the power generated by a turbine, Δt is the time step, and t is the time. Figure 15 compares $\eta_{\text{LES}}(t, \Delta T)$, the wind farm efficiency simulated in the LES, with $\eta_{\text{OFF}}(t, \Delta T)$ and $\eta_{\text{FLORIS}}(t, \Delta T)$, the values OFF and FLORIS predict, respectively. This is done for four values of ΔT between 100 and 1800 s with data from all three TFs and based on the $\varphi_{\text{lim}} = 5^\circ$, $k_i = 0.02$ controllers. A first observation is that the range of values for the farm efficiency decreases with increasing length of ΔT . This shows the increasing convergence towards a more consistent controller performance over a longer time as well as a diminishing influence of effects at a small timescale. In comparison, between OFF and FLORIS, OFF generally predicts a narrower fit for small values of ΔT , closer to the ideal correlation line. With increasing ΔT , this difference diminishes, and the distributions of FLORIS and OFF become more equal. For large ΔT , FLORIS shows a structural underestimation compared to the LES data, where OFF still predicts values along the ideal correlation line. This observation is also quantifiable with the linear regression parameters: as ΔT lengthens, the linear coefficient approaches 1, and the bias decreases. This trend is visible for both models; however, OFF consistently presents parameters closer to the ideal values.

Figure 16 investigates the error in the approximation of the farm efficiency to further quantify and compare the differences. For each TF and each simulation environment $\eta(t, \Delta T)$ is calculated for $\Delta T \in [100, 1900]$ s and $t \in [t_0, t_1 - T]$, where t_0 is the start time of each TF, and t_1 is the final time. Figure 16 compares how the root-mean-square error between the $\eta(t, T)$ from the LES and the $\eta(t, \Delta T)$ of OFF and FLORIS changes for different T . The difference between the LES and FLORIS improves significantly for longer averaging periods, highlighting its design meant for long-term wind farm behavior. On the other hand, OFF benefits from the addition of wake dynamics and shows much lower RMSE values compared to FLORIS. However, this advantage becomes smaller as ΔT grows larger. As a result, a user has to decide if the added computational cost of OFF in comparison to FLORIS justifies the improvement in prediction.

Table 1. Power error statistics for each controller tested in OFF, FLORIS and LES. From left: T. NRMSE, the normalized root-mean-square error calculated with the corrected turbine power LES data; T. Corr., the correlation with the unfiltered turbine power LES signal; F. NRMSE, the normalized root-mean-square error calculated with the corrected farm power LES data; F. Corr., the correlation with the unfiltered farm power LES signal; f_{cutoff} , the cutoff frequency for LES filtering; and e_{corr} , the average correlation error.

Model	φ_{lim}	k_i	Mode	T. NRMSE [–]	T. Corr. [–]	F. NRMSE [–]	F. Corr. [–]	f_{cutoff} [Hz]	e_{corr} [–]
OFF	2	0.09	LuT	0.19	0.81	0.047	0.88	1/360	0.14
FLORIS	2	0.09	LuT	0.27	0.74	0.064	0.81	1/540	0.26
OFF	2	0.09	BL	0.20	0.88	0.048	0.90	1/430	0.10
FLORIS	2	0.09	BL	0.19	0.87	0.045	0.92	1/520	0.13
OFF	5	0.02	LuT	0.18	0.83	0.043	0.90	1/360	0.12
FLORIS	5	0.02	LuT	0.24	0.76	0.056	0.84	1/520	0.24
OFF	5	0.02	BL	0.20	0.88	0.047	0.91	1/390	0.10
FLORIS	5	0.02	BL	0.20	0.87	0.045	0.92	1/520	0.15
OFF	10	0.05	LuT	0.18	0.85	0.042	0.91	1/370	0.11
FLORIS	10	0.05	LuT	0.24	0.80	0.053	0.85	1/510	0.21
OFF	10	0.05	BL	0.20	0.88	0.048	0.91	1/370	0.09
FLORIS	10	0.05	BL	0.21	0.86	0.047	0.91	1/500	0.16

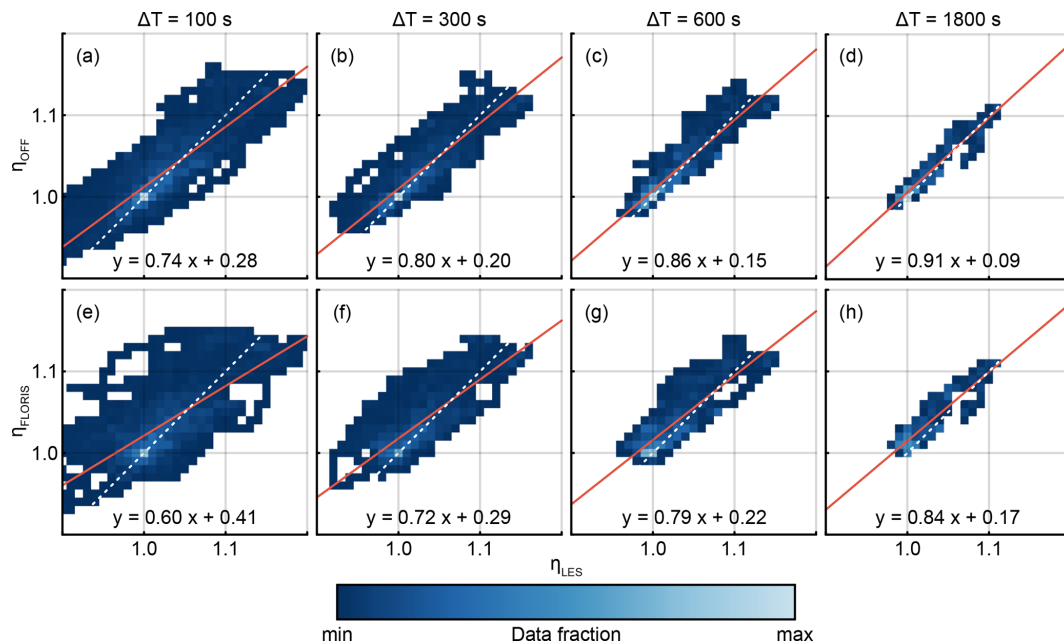


Figure 15. Wind farm efficiency as predicted by the surrogate models OFF (a–d) and FLORIS (e–h) and as simulated in the LES. The efficiency is calculated based on the ratio of energy generated over a time window ΔT , which is equal for each column of the figure, e.g., (a) and (e). The dotted white line indicates a perfect fit, which is complemented by the linear regression of the data, given as a red line and equation. The color map is normalized by the largest bin count based on the given time window. The darkest color is reserved for the smallest non-zero bin count; empty bins are not filled. Note that the distribution of ΔT is not equidistant.

We conclude that, based on this case study, it is advantageous to use OFF for quantities of interest shorter than ≈ 20 min. However, for longer timescales the benefit of the added dynamics diminishes.

4.6 Computational cost

One of the main motivations for dynamic parametric wake models like OFF, or by extension for FLORIDyn or On-

WARDS, is the low computational cost compared to high-fidelity numerical methods such as LES, for instance. On the other hand, it is evident that the computational cost has to be higher than the cost of the underlying steady-state wake model. Simplified, the computational cost of both OFF and time-marching FLORIS can be expressed as a function of the number of time steps n_k , the number of turbines n_T and the

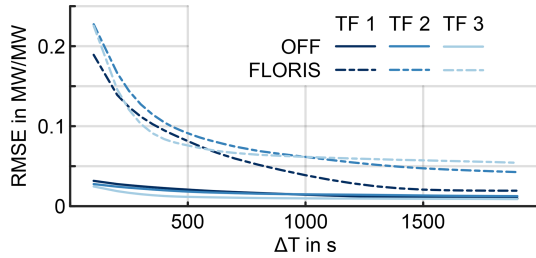


Figure 16. Root-mean-square error in the wind farm efficiency in LES compared to OFF or FLORIS. The wind farm efficiency is defined as the ratio of the energy generated with LuT control divided by the baseline energy integrated over a given time window.

number of observation points n_{OP} :

$$\mathcal{O}_{OFF} = n_k \left[\underbrace{\mathcal{O}_{State\ prop.}(n_T, n_{OP}) + \mathcal{O}_{TWF}(n_T, n_{OP}) + n_T \cdot [\mathcal{O}_{F, run}(n_T) + \mathcal{O}_{F, reinit.}(n_T)]}_{\mathcal{O}_{prediction}} + \dots \right. \\ \left. \dots \mathcal{O}_{corr.}(n_T, n_{OP}) + \mathcal{O}_{con.}(n_T) \right] \\ + \mathcal{O}_{F, init.} + \mathcal{O}_{OFF\ init.}, \quad (14)$$

$$\mathcal{O}_{FLORIS} = n_k \cdot \mathcal{O}_{F, run}(n_T) + \mathcal{O}_{F, init.} + \mathcal{O}_{con.}(n_T), \quad (15)$$

where $\mathcal{O}_{State\ prop.}$ refers to the cost of the state propagation, \mathcal{O}_{TWF} to the creation of the TWFs, $\mathcal{O}_{F, run}$ to the cost of one FLORIS evaluation, $\mathcal{O}_{F, reinit.}$ and $\mathcal{O}_{F, init.}$ to the FLORIS reinitialization and initialization, $\mathcal{O}_{corr.}$ to the state correction, and lastly $\mathcal{O}_{con.}$ to the derivation of the control set points. This is accompanied by other costs, such as visualization, data storage and memory limitations, which are excluded here.

Performance analysis during the code development has shown that the reoccurring computational costs of $\mathcal{O}_{F, reinit.}$ can be substantial depending on the implementation. FLORIS was developed with other simulation goals in mind. This leads to costs associated with the reinitialization that are mandatory for some FLORIS applications but could be neglected for purposes of the OFF simulations. Consequently, existing codes similar to OFF have mainly chosen to implement their own wake model. This, in return, limits the capabilities and flexibility of the wake model, which was one of the main motivations for the development of OFF. Another consideration to reduce computational costs is to only run relevant turbines in the steady-state simulation and thereby decrease the cost of $\mathcal{O}_{F, run}(n_T)$. This could be done by excluding turbines that do not contribute to the wake losses experienced by the turbine the TWF is dedicated to. The validity of this approach also depends on the steady-state model capabilities. For instance, if there is a blockage model based on n_T , this simplification would introduce a systematic model error. Lastly, parallelization is a natural approach to improving computational complexity. The n_T TWF evaluations done in one time step can be done independently of one another, which would lead to a performance improvement for

up to n_T cores. In this work, we investigate a large number of control settings and, therefore, use OFF as a single-core code and split the task at hand over multiple simulations. To give an estimate, in our 10-turbine simulations, OFF ran with a real-time factor of 2.2×10^{-1} in single-core performance, resulting in 5 h 20 min CPU time for 23 h 45 min simulated time. The SOWFA simulations, recalculated from 80 cores to 1 core, ran with a real-time factor of 2×10^3 , resulting in 60:30 h CPU time for 3 h simulated time. Lastly, FLORIS ran with a real-time factor of 5.2×10^{-5} , resulting in 4.43 s wall time for 23 h 45 min simulated time. Previous work showed that the real-time factor of a model like OFF can be reduced to the order of 10^{-3} for a similar-sized wind farm with a dedicated implementation of the Gaussian wake model (Lejeune et al., 2022; Becker et al., 2022b).

5 Conclusions

This paper introduces OFF, a dynamic open-source wake model designed for wind farm flow control and wake model development and as a unified interface for various similar models. In this context, a generic description of a passive Lagrangian particle wake model is provided, along with details on the specific version used to achieve the results discussed here. In an example case, the model is used to make an informed parameter choice for a wake steering controller before verifying the selected settings in LES. The controller applies a wake steering look-up table dynamically for a 10-turbine wind farm. The wind farm layout is based on the Hollandse Kust Noord wind farm, and the approximately 24 h long period of wind direction time series used to test the controllers is based on field data from the same location.

The results from the study show that the wind farm controller can lead to suboptimal performance in the presence of wind direction changes compared to what was predicted during the generation of the LuT based on a steady-state assumption. The study also shows that the wake steering controller's performance can vary widely for the same wind direction based on the prior state of wind direction, wakes and controller used. Six selected sets of controller settings are then verified in LES in three 3 h long subsets of the wind direction change time series. The results show overall good agreement between the LES and OFF in both predicted power generated and wake steering controller efficiency. The LES, for instance, confirms that one of the selected time frames creates a challenging environment for the wake steering controller to return consistent gains over the baseline operation. The results further highlight the timescales described by both FLORIS and OFF. A conclusion drawn from the comparison is that a dynamic wake description leads to a better correlation with the LES power signal, as well as a lower root-mean-square error compared to a steady-state prediction.

In conclusion, OFF provides a unified interface to a dynamic wake description that is advantageous over steady-

state wake models for shorter time periods (< 20 min). The model is open-source and designed to interface with steady-state wake model toolboxes. This has been demonstrated with the FLORIS toolbox. As a result, users of OFF can also benefit from the ongoing development done for the underlying wake models.

Future work should further investigate the use and effect of various steady-state wake models in a dynamic context. This starts with further validation of the approach and the generation of more realistic test and reference cases. One shortcoming of the presented case study is its limitation to wind direction variations. Future work should investigate the model and control performance with realistic wind speed variations, similar to the works of, for example, Doekemeijer et al. (2020) and van den Broek et al. (2024). It may also involve investigating the selection of wake parameters. Since OFF describes wakes at higher frequencies, the resulting wake shape may appear more slender than a steady-state wake, which must account for small-scale wind direction changes and wake meandering. The OFF code is further built in a modular way to be expanded by other dynamic elements and to further explore their effectiveness for the description of dynamic flows. This includes, for instance, wake advection descriptions (e.g., Zong and Porté-Agel, 2020; Lejeune et al., 2022; Starke et al., 2023), shear and veer parametrizations (e.g., Abkar et al., 2018), or floating-turbine dynamics (e.g., Kheirabadi and Nagamune, 2021). Another direction of interest can be the employment of single-wake dynamic surrogate models in a wind farm, e.g., Bastine et al. (2015) and Gutknecht et al. (2023).

In the long term OFF should lead towards a new dynamic wake model that replaces modularity with reduced computational cost and a dedicated, informed selection of the components previously explored.

Code and data availability. The OFF framework is available on GitHub at <https://github.com/TUdelft-DataDrivenControl/OFF>, last access: 6 June 2025. The code used for this publication can be found with the DOI <https://doi.org/10.4121/331f86fe-5acb-4a60-99cd-7f8f0135c200> (Becker and Lejeune, 2024b) or on the GitHub repository with the commit 7910dd2e960821bc85e1468efe24f3cf8b5602cf. The data generated and used in this paper are available at <https://doi.org/10.4121/29C209FA-F2A4-456D-9353-67CF81BE1AAA> (Becker and Lejeune, 2024a). Plotting and post-processing scripts are also included to give examples how the data can be used.

Author contributions. Conceptualization: MB, ML, JWvW, PC, DA, RM. Methodology: MB, ML. Software: MB, ML, RM. Validation: MB, ML. Investigation: MB, ML. Writing (original draft): MB, ML. Writing (review): MB, ML, JWvW, PC, RM. Editing: MB, ML. Supervision: JWvW, PC, DA. Resources: JWvW. Funding acquisition: JWvW, PC.

Competing interests. At least one of the (co-)authors is a member of the editorial board of *Wind Energy Science*. The peer-review process was guided by an independent editor, and the authors also have no other competing interests to declare.

Disclaimer. Publisher's note: Copernicus Publications remains neutral with regard to jurisdictional claims made in the text, published maps, institutional affiliations, or any other geographical representation in this paper. While Copernicus Publications makes every effort to include appropriate place names, the final responsibility lies with the authors.

Special issue statement. This article is part of the special issue "NAWEA/WindTech 2024". It is a result of the NAWEA/WindTech 2024, New Brunswick, United States, 30 October–1 November 2024.

Acknowledgements. This work is part of the research program "Robust closed-loop wake steering for large densely spaced wind farms" with project number 17512, which is (partly) financed by the Dutch Research Council (NWO).

This project has received funding from the European Research Council under the European Union's Horizon 2020 research and innovation program (grant agreement no. 725627).

This work has been supported by the SUDOCO project, which receives funding from the European Union's Horizon Europe program under grant no. 101122256.

Financial support. This research has been supported by the Nederlandse Organisatie voor Wetenschappelijk Onderzoek (grant no. 17512) and the EU HORIZON EUROPE European Research Council (grant nos. 725627 and 101122256).

Review statement. This paper was edited by Nikolay Dimitrov and reviewed by two anonymous referees.

References

- Abkar, M., Sørensen, J. N., and Porté-Agel, F.: An Analytical Model for the Effect of Vertical Wind Veer on Wind Turbine Wakes, *Energies*, 11, 1838, <https://doi.org/10.3390/en11071838>, 2018.
- Annoni, J., Bay, C., Johnson, K., Dall'Anese, E., Quon, E., Kemper, T., and Fleming, P.: Wind direction estimation using SCADA data with consensus-based optimization, *Wind Energ. Sci.*, 4, 355–368, <https://doi.org/10.5194/wes-4-355-2019>, 2019.
- Bak, C., Zahle, F., Bitsche, R., Kim, T., Yde, A., Henriksen, L. C., Hansen, M. H., Blasques, J. P. A. A., Gaunaa, M., and Natarajan, A.: The DTU 10 MW Reference Wind Turbine, Danish Wind Power Research 2013, Fredericia, Denmark, 27 to 28 May 2013, <https://orbit.dtu.dk/en/publications/the-dtu-10-mw-reference-wind-turbine> (last access: 3 June 2025), 2013.

- Bastankhah, M. and Porté-Agel, F.: Experimental and Theoretical Study of Wind Turbine Wakes in Yawed Conditions, *J. Fluid Mech.*, 806, 506–541, <https://doi.org/10.1017/jfm.2016.595>, 2016.
- Bastine, D., Witha, B., Wächter, M., and Peinke, J.: Towards a Simplified DynamicWake Model Using POD Analysis, *Energies*, 8, 895–920, <https://doi.org/10.3390/en8020895>, 2015.
- Bay, C. J., Fleming, P., Doekemeijer, B., King, J., Churchfield, M., and Mudafort, R.: Addressing deep array effects and impacts to wake steering with the cumulative-curl wake model, *Wind Energ. Sci.*, 8, 401–419, <https://doi.org/10.5194/wes-8-401-2023>, 2023.
- Becker, M. and Lejeune, M.: Data belonging to the publication: A dynamic open-source model to investigate wake dynamics in response to wind farm flow control strategies, 4TU.ResearchData [data set] <https://doi.org/10.4121/29C209FA-F2A4-456D-9353-67CF81BE1AAA>, 2024a.
- Becker, M. and Lejeune, M.: OFF framework, code underlying the publication A dynamic open-source model to investigate wake dynamics in response to wind farm flow control strategies, Version 2, 4TU.ResearchData [code], <https://doi.org/10.4121/331f86fe-5acb-4a60-99cd-7f8f0135c200>, 2024.
- Becker, M., Allaerts, D., and van Wingerden, J.-W.: Ensemble-Based Flow Field Estimation Using the Dynamic Wind Farm Model FLORIDyn, *Energies*, 15, 8589, <https://doi.org/10.3390/en15228589>, 2022a.
- Becker, M., Allaerts, D., and van Wingerden, J. W.: FLORIDyn – A Dynamic and Flexible Framework for Real-Time Wind Farm Control, *J. Phys. Conf. Ser.*, 2265, 032103, <https://doi.org/10.1088/1742-6596/2265/3/032103>, 2022b.
- Becker, M., Ritter, B., Doekemeijer, B., van der Hoek, D., Konigorski, U., Allaerts, D., and van Wingerden, J.-W.: The revised FLORIDyn model: implementation of heterogeneous flow and the Gaussian wake, *Wind Energ. Sci.*, 7, 2163–2179, <https://doi.org/10.5194/wes-7-2163-2022>, 2022c.
- Braunbehrens, R., Schreiber, J., and Bottasso, C. L.: Application of an Open-Loop Dynamic Wake Model with High-Frequency SCADA Data, *J. Phys. Conf. Ser.*, 2265, 022031, <https://doi.org/10.1088/1742-6596/2265/2/022031>, 2022.
- Braunbehrens, R., Tamaro, S., and Bottasso, C. L.: Towards the Multi-Scale Kalman Filtering of Dynamic Wake Models: Observing Turbulent Fluctuations and Wake Meandering, *J. Phys. Conf. Ser.*, 2505, 012044, <https://doi.org/10.1088/1742-6596/2505/1/012044>, 2023.
- Chatelain, P., Backaert, S., Winckelmans, G., and Kern, S.: Large Eddy Simulation of Wind Turbine Wakes, *Flow Turbul. Combust.*, 91, 587–605, <https://doi.org/10.1007/s10494-013-9474-8>, 2013.
- Churchfield, M. J., Lee, S., Michalakes, J., and Moriarty, P. J.: A Numerical Study of the Effects of Atmospheric and Wake Turbulence on Wind Turbine Dynamics, *J. Turbul.*, 13, N14, <https://doi.org/10.1080/14685248.2012.668191>, 2012.
- Ciri, U., Rotea, M. A., and Leonardi, S.: Model-Free Control of Wind Farms: A Comparative Study between Individual and Coordinated Extremum Seeking, *Renew. Energ.*, 113, 1033–1045, <https://doi.org/10.1016/j.renene.2017.06.065>, 2017.
- Coquelet, M., Bricteux, L., Moens, M., and Chatelain, P.: A Reinforcement-Learning Approach for Individual Pitch Control, *Wind Energy*, 25, 1343–1362, <https://doi.org/10.1002/we.2734>, 2022.
- Costanzo, G. and Brindley, G.: Wind Energy in Europe – 2023 Statistics and the Outlook for 2024–2023, Tech. rep., Wind Europe, <https://windeurope.org/intelligence-platform/product/wind-energy-in-europe-2023-statistics-and-the-outlook-for-2024-2030/> (last access: 28 May 2025), 2024.
- Di Cave, J., Braunbehrens, R., Krause, J., Guilloiré, A., and Bottasso, C. L.: Closed-Loop Coupling of a Dynamic Wake Model with a Wind Inflow Estimator, *J. Phys. Conf. Ser.*, 2767, 032034, <https://doi.org/10.1088/1742-6596/2767/3/032034>, 2024.
- Doekemeijer, B. M., van der Hoek, D., and van Wingerden, J.: Closed-Loop Model-Based Wind Farm Control Using FLORIS under Time-Varying Inflow Conditions, *Renew. Energ.*, 156, 719–730, <https://doi.org/10.1016/j.renene.2020.04.007>, 2020.
- Doekemeijer, B. M., Kern, S., Maturu, S., Kanev, S., Salbert, B., Schreiber, J., Campagnolo, F., Bottasso, C. L., Schuler, S., Wilts, F., Neumann, T., Potenza, G., Calabretta, F., Fioretti, F., and van Wingerden, J.-W.: Field experiment for open-loop yaw-based wake steering at a commercial onshore wind farm in Italy, *Wind Energ. Sci.*, 6, 159–176, <https://doi.org/10.5194/wes-6-159-2021>, 2021.
- Farrell, A., King, J., Draxl, C., Mudafort, R., Hamilton, N., Bay, C. J., Fleming, P., and Simley, E.: Design and analysis of a wake model for spatially heterogeneous flow, *Wind Energ. Sci.*, 6, 737–758, <https://doi.org/10.5194/wes-6-737-2021>, 2021.
- Fleming, P., King, J., Simley, E., Roadman, J., Scholbrock, A., Murphy, P., Lundquist, J. K., Moriarty, P., Fleming, K., van Dam, J., Bay, C., Mudafort, R., Jager, D., Skopek, J., Scott, M., Ryan, B., Guernsey, C., and Brake, D.: Continued results from a field campaign of wake steering applied at a commercial wind farm – Part 2, *Wind Energ. Sci.*, 5, 945–958, <https://doi.org/10.5194/wes-5-945-2020>, 2020.
- Fleming, P. A., Stanley, A. P. J., Bay, C. J., King, J., Simley, E., Doekemeijer, B. M., and Mudafort, R.: Serial-Refine Method for Fast Wake-Steering Yaw Optimization, *J. Phys. Conf. Ser.*, 2265, 032109, <https://doi.org/10.1088/1742-6596/2265/3/032109>, 2022.
- Foloppe, B., Munters, W., Buckingham, S., Vandevelde, L., and van Beeck, J.: Development of a Dynamic Wake Model Accounting for Wake Advection Delays and Mesoscale Wind Transients, *J. Phys. Conf. Ser.*, 2265, 022055, <https://doi.org/10.1088/1742-6596/2265/2/022055>, 2022.
- Frederik, J. A., Doekemeijer, B. M., Mulders, S. P., and van Wingerden, J.-W.: The Helix Approach: Using Dynamic Individual Pitch Control to Enhance Wake Mixing in Wind Farms, *Wind Energy*, 23, 1739–1751, <https://doi.org/10.1002/we.2513>, 2020.
- Froude, R. E.: On the Part Played in Propulsion by Differences of Fluid Pressure, *Transactions of the Institution of Naval Architects*, 30, 390, 1889.
- Gebraad, P. M. O. and van Wingerden, J. W.: A Control-Oriented Dynamic Model for Wakes in Wind Plants, *J. Phys. Conf. Ser.*, 524, 012186, <https://doi.org/10.1088/1742-6596/524/1/012186>, 2014.
- Gebraad, P. M. O., Fleming, P. A., and van Wingerden, J. W.: Wind Turbine Wake Estimation and Control Using FLORIDyn, a Control-Oriented Dynamic Wind Plant Model, American Control Conference (ACC), Chicago, Illinois, United States of Amer-

- ica, 1–3 July 2015, <https://doi.org/10.1109/ACC.2015.7170978>, 2015.
- Gutknecht, J., Becker, M., Muscari, C., Lutz, T., and Wingerden, J.-W. V.: Scaling DMD Modes for Modeling Dynamic Induction Control Wakes in Various Wind Speeds, in: 2023 IEEE Conference on Control Technology and Applications (CCTA), IEEE, Bridgetown, Barbados, 16–18 August 2023, 574–580, ISBN 9798350335446, <https://doi.org/10.1109/CCTA54093.2023.10252400>, 2023.
- Heck, K., Johlas, H., and Howland, M.: Modelling the Induction, Thrust and Power of a Yaw-Misaligned Actuator Disk, *J. Fluid Mech.*, 959, A9, <https://doi.org/10.1017/jfm.2023.129>, 2023.
- Howland, M. F., Johlas, H. M., Quesada, J. B., Pena Martinez, J. J., Zhong, W., and Larranaga, F. P.: On the Impact of the Yaw Update Frequency and Wind Direction Forecasting on Open-Loop Wake Steering Control, in: 2022 American Control Conference (ACC), IEEE, Atlanta, GA, USA, 8–10 June 2022, 4218–4223, ISBN 978-1-66545-196-3, <https://doi.org/10.23919/ACC53348.2022.9867443>, 2022.
- Hulsman, P., Howland, M., Göçmen, T., and Petrović, V.: Assessing Closed-Loop Data-Driven Wind Farm Control Strategies within a Wind Tunnel, *J. Phys. Conf. Ser.*, 2767, 032049, <https://doi.org/10.1088/1742-6596/2767/3/032049>, 2024.
- Jensen, N. O.: A Note on Wind Generator Interaction, *Riso-M*, No. 2411, https://backend.orbit.dtu.dk/ws/portalfiles/portal/55857682/ris_m_2411.pdf (last accessed: 28 May 2025), 1983.
- Jonkman, J., Doubrawa, P., Hamilton, N., Annoni, J., and Fleming, P.: Validation of FAST.Farm Against Large-Eddy Simulations, *J. Phys. Conf. Ser.*, 1037, 062005, <https://doi.org/10.1088/1742-6596/1037/6/062005>, 2018.
- Jonkman, J. M., Annoni, J., Hayman, G., Jonkman, B., and Purkayastha, A.: Development of FAST.Farm: A New Multi-Physics Engineering Tool for Wind-Farm Design and Analysis, in: 35th Wind Energy Symposium, American Institute of Aeronautics and Astronautics, Grapevine, Texas, 9–13 January 2017, ISBN 978-1-62410-456-5, <https://doi.org/10.2514/6.2017-0454>, 2017.
- Kanev, S.: Dynamic Wake Steering and Its Impact on Wind Farm Power Production and Yaw Actuator Duty, *Renew. Energ.*, 146, 9–15, <https://doi.org/10.1016/j.renene.2019.06.122>, 2020.
- Kheirabadi, A. C. and Nagamune, R.: A Low-Fidelity Dynamic Wind Farm Model for Simulating Time-Varying Wind Conditions and Floating Platform Motion, *Ocean Eng.*, 234, 109313, <https://doi.org/10.1016/j.oceaneng.2021.109313>, 2021.
- Kipke, V. and Sourkounis, C.: Three-Dimensional Dynamic Wake Model for Real-Time Wind Farm Simulation, in: 2024 32nd Mediterranean Conference on Control and Automation (MED), IEEE, Chania – Crete, Greece, 11–14 June 2024, 808–815, ISBN 9798350395440, <https://doi.org/10.1109/MED61351.2024.10566140>, 2024.
- Knoop, S.: Wind – Lidar Wind Profiles Measured at North Sea Wind Farm TenneT Platforms 1 Second Raw Data, KNMI Data Platform [data set], <https://datapatform.knmi.nl/dataset/windlidar-nz-wp-platform-1s-1> (last access: 28 May 2025), 2019.
- Larsen, G. C., Madsen Aagaard, H., Bingöl, F., Mann, J., Ott, S., Sørensen, J. N., Okulov, V., Troldborg, N., Nielsen, N. M., Thomsen, K., Larsen, T. J., and Mikkelsen, R.: Dynamic Wake Meandering Modeling, *Risø National Laboratory*, ISBN 978-87-550-3602-4, 2007.
- Larsen, T. J., Larsen, G. C., Pedersen, M. M., Enevoldsen, K., and Madsen, H. A.: Validation of the Dynamic Wake Meander Model with Focus on Tower Loads, *J. Phys. Conf. Ser.*, 854, 012027, <https://doi.org/10.1088/1742-6596/854/1/012027>, 2017.
- Lejeune, M., Moens, M., and Chatelain, P.: A Meandering-Capturing Wake Model Coupled to Rotor-Based Flow-Sensing for Operational Wind Farm Flow Prediction, *Frontiers in Energy Research*, 10, 884068, <https://doi.org/10.3389/fenrg.2022.884068>, 2022.
- Lejeune, M., Frère, A., Moens, M., and Chatelain, P.: Are Steady-State Wake Models and Lookup Tables Sufficient to Design Profitable Wake Steering Strategies? A Large Eddy Simulation Investigation, *J. Phys. Conf. Ser.*, 2767, 092075, <https://doi.org/10.1088/1742-6596/2767/9/092075>, 2024.
- Liew, J., Göçmen, T., Lio, A. W. H., and Larsen, G. Chr.: Extending the dynamic wake meandering model in HAWC2Farm: a comparison with field measurements at the Lillgrund wind farm, *Wind Energ. Sci.*, 8, 1387–1402, <https://doi.org/10.5194/wes-8-1387-2023>, 2023.
- Lio, W. H., Larsen, G. C., and Thorsen, G. R.: Dynamic Wake Tracking Using a Cost-Effective LiDAR and Kalman Filtering: Design, Simulation and Full-Scale Validation, *Renew. Energ.*, 172, 1073–1086, <https://doi.org/10.1016/j.renene.2021.03.081>, 2021.
- Madsen, H. A., Larsen, G. C., Larsen, T. J., Troldborg, N., and Mikkelsen, R.: Calibration and Validation of the Dynamic Wake Meandering Model for Implementation in an Aeroelastic Code, *J. Sol. Energ.-T. ASME*, 132, 041014, <https://doi.org/10.1115/1.4002555>, 2010.
- Marichal, Y., Visscher, I. D., Chatelain, P., and Winckelmans, G.: Towards Physics-Based Operational Modeling of the Unsteady Wind Turbine Response to Atmospheric and Wake-Induced Turbulence, *J. Phys. Conf. Ser.*, 854, 012030, <https://doi.org/10.1088/1742-6596/854/1/012030>, 2017.
- Marten, D.: QBlade: A Modern Tool for the Aeroelastic Simulation of Wind Turbines, PhD thesis, TU Berlin, <https://doi.org/10.14279/DEPOSITONCE-10646>, 2020.
- Martinez, L., Leonardi, S., Churchfield, M., and Moriarty, P.: A Comparison of Actuator Disk and Actuator Line Wind Turbine Models and Best Practices for Their Use, in: 50th AIAA Aerospace Sciences Meeting Including the New Horizons Forum and Aerospace Exposition, American Institute of Aeronautics and Astronautics, Nashville, Tennessee, 9–12 January 2012, ISBN 978-1-60086-936-5, <https://doi.org/10.2514/6.2012-900>, 2012.
- Miao, Y., Soltani, M. N., Hajizadeh, A., and Simani, S.: Artificial Neural Network-based Wake Steering Control under the Time-varying Inflow, in: 2024 10th International Conference on Control, Decision and Information Technologies (CoDIT), IEEE, Vallette, Malta, 1–4 July 2024, 1988–1993, ISBN 9798350373974, <https://doi.org/10.1109/CoDIT62066.2024.10708147>, 2024.
- Moens, M., Lejeune, M., and Chatelain, P.: An Advanced Farm Flow Estimator for the Real-Time Evaluation of the Potential Wind Power of a down-Regulated Wind Farm, *J. Phys. Conf. Ser.*, 2767, 032044, <https://doi.org/10.1088/1742-6596/2767/3/032044>, 2024.

- Munters, W. and Meyers, J.: An Optimal Control Framework for Dynamic Induction Control of Wind Farms and Their Interaction with the Atmospheric Boundary Layer, *Philos. T. Roy. Soc. A*, 375, 20160100, <https://doi.org/10.1098/rsta.2016.0100>, 2017.
- NREL: FLORIS. Version 4.2, GitHub [code], <https://github.com/NREL/floris> (last access: 28 May 2025), 2023.
- Pedersen, M. M., Meyer Forsting, A., van der Laan, P., Riva, R., Alcayaga Román, L. A., Criado Risco, J., Friis-Møller, M., Quick, J., Schøler Christiansen, J. P., Valotta Rodrigues, R., Olsen, B. T., and Réthoré, P.-E.: PyWake 2.5.0: An Open-Source Wind Farm Simulation Tool, *GitLab* [code], <https://gitlab.windenergy.dtu.dk/TOPFARM/PyWake> (last access: 28 May 2025), 2023.
- Quick, J., King, R. N., Barter, G., and Hamlington, P. E.: Multi-fidelity multiobjective optimization for wake-steering strategies, *Wind Energ. Sci.*, 7, 1941–1955, <https://doi.org/10.5194/wes-7-1941-2022>, 2022.
- Rankine, W. J. M.: On the Mechanical Principles of the Action of Propellers, *Transactions of the Institution of Naval Architects*, 6, 13 pp., 1865.
- Schmidt, J., Vollmer, L., Dörenkämper, M., and Stoevesandt, B.: FOXES: Farm Optimization and eXtended yield Evaluation Software, *Journal of Open Source Software*, 8, 5464, <https://doi.org/10.21105/joss.05464>, 2023.
- Shapiro, C. R., Gayme, D. F., and Meneveau, C.: Filtered Actuator Disks: Theory and Application to Wind Turbine Models in Large Eddy Simulation, *Wind Energy*, 22, 1414–1420, <https://doi.org/10.1002/we.2376>, 2019.
- Simley, E., Fleming, P., and King, J.: Design and analysis of a wake steering controller with wind direction variability, *Wind Energ. Sci.*, 5, 451–468, <https://doi.org/10.5194/wes-5-451-2020>, 2020.
- Starke, G. M., Meneveau, C., King, J. R., and Gayme, D. F.: A Dynamic Model of Wind Turbine Yaw for Active Farm Control, *Wind Energy*, 27, we.2884, <https://doi.org/10.1002/we.2884>, 2023.
- Sterle, A., Hans, C. A., and Raisch, J.: Model Predictive Control of Wakes for Wind Farm Power Tracking, *J. Phys. Conf. Ser.*, 2767, 032005, <https://doi.org/10.1088/1742-6596/2767/3/032005>, 2024.
- Tamaro, S., Campagnolo, F., and Bottasso, C. L.: On the power and control of a misaligned rotor – beyond the cosine law, *Wind Energ. Sci.*, 9, 1547–1575, <https://doi.org/10.5194/wes-9-1547-2024>, 2024.
- van den Broek, M. J., Sanderse, B., and Wingerden, J.-W. V.: Flow Modelling for Wind Farm Control: 2D vs. 3D, *J. Phys. Conf. Ser.*, 2265, 032086, <https://doi.org/10.1088/1742-6596/2265/3/032086>, 2022.
- van den Broek, M. J., De Tavernier, D., Hulsman, P., van der Hoek, D., Sanderse, B., and van Wingerden, J.-W.: Free-vortex models for wind turbine wakes under yaw misalignment – a validation study on far-wake effects, *Wind Energ. Sci.*, 8, 1909–1925, <https://doi.org/10.5194/wes-8-1909-2023>, 2023.
- van den Broek, M. J., Becker, M., Sanderse, B., and van Wingerden, J.-W.: Dynamic wind farm flow control using free-vortex wake models, *Wind Energ. Sci.*, 9, 721–740, <https://doi.org/10.5194/wes-9-721-2024>, 2024.
- van der Hoek, D., Sinner, M., Simley, E., Pao, L., and van Wingerden, J.-W.: Estimation of the Ambient Wind Field From Wind Turbine Measurements Using Gaussian Process Regression, in: 2021 American Control Conference (ACC), IEEE, New Orleans, LA, USA, 25–28 May 2021, 558–563, ISBN 978-1-66544-197-1, <https://doi.org/10.23919/ACC50511.2021.9483088>, 2021.
- Zong, H. and Porté-Agel, F.: A Momentum-Conserving Wake Superposition Method for Wind Farm Power Prediction, *J. Fluid Mech.*, 889, A8, <https://doi.org/10.1017/jfm.2020.77>, 2020.