

THE INTERMOTIN LANDSCAPE

An Experimental Design on Movement, Place Making and the Appreciation of the Cultural Landscape in the Zaanstad Area.

PROJECT DESCRIPTION

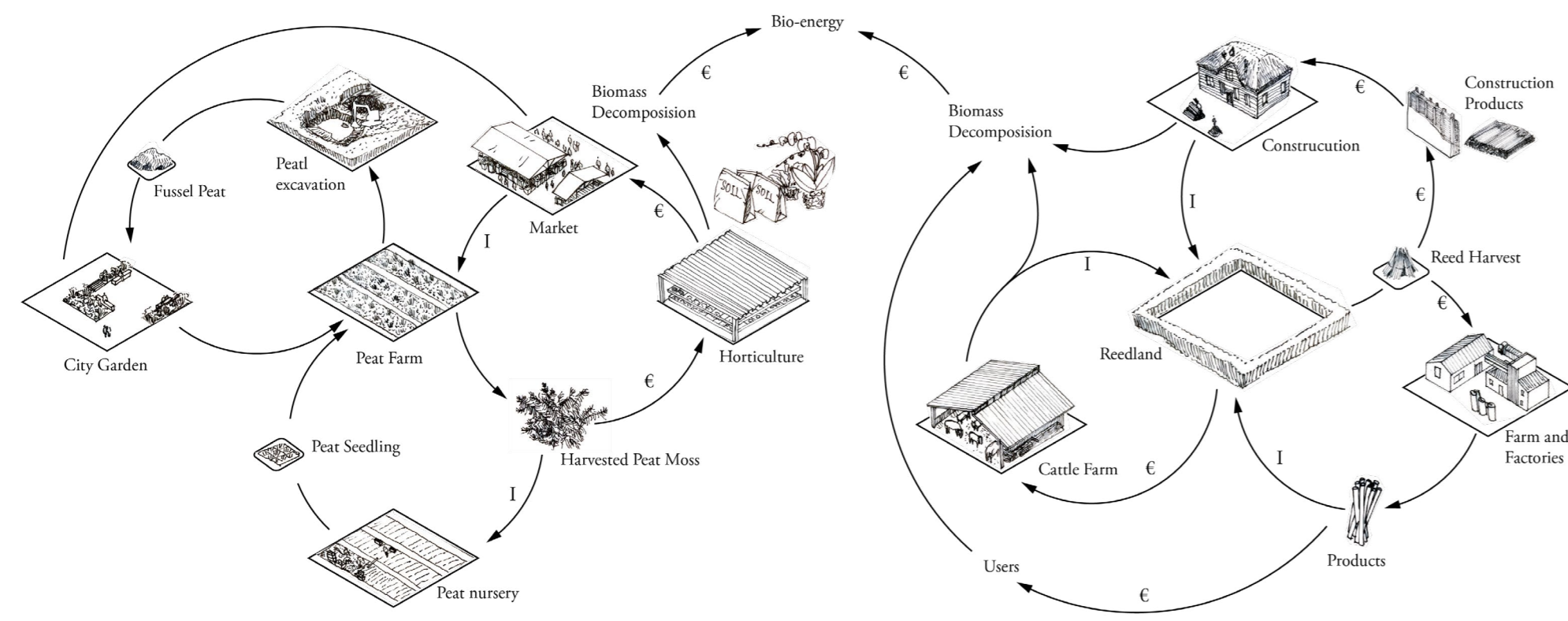
An experimental project, taking three main place into account, two from the existing context and one is a moving place, which constantly travel in-between other two. The floating place called the Vessel, going back and forth in-between human and nature, city and polder, acting as a mediator.

How can the Intermotion landscape create a new relationship between human and nature and regain the spirit of place? ?



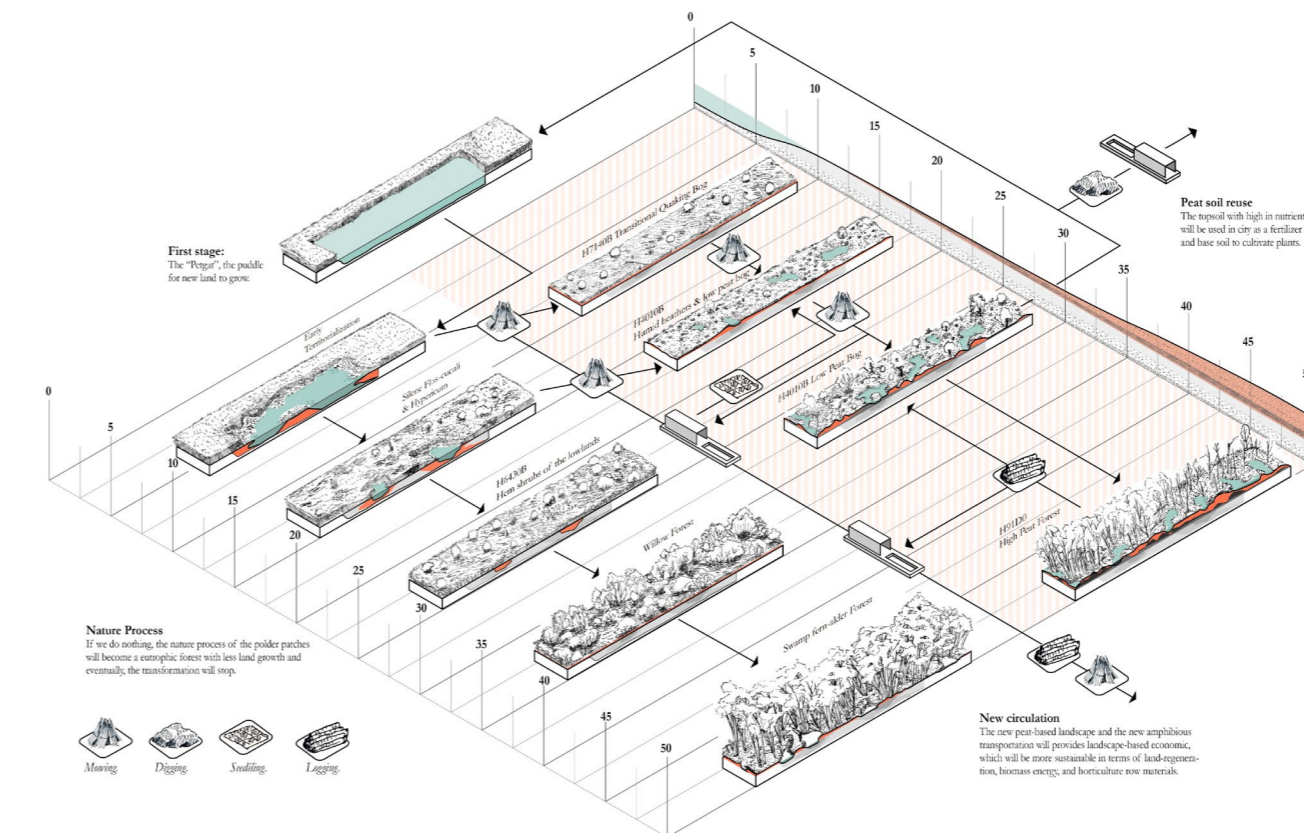
CIRCULATION

The local circularities incorporates with local farmers, industries and regional businesses with the cultivation of peat moss and reed. It also provides connections between people from place to place.



DEPARTURE OF THE VESSEL

A Vessel was designed as a floating landscape collector and a floating public place; the Vessel also is a part of the landscape, and the design seeks a possibility that the landscape could be mobilized.

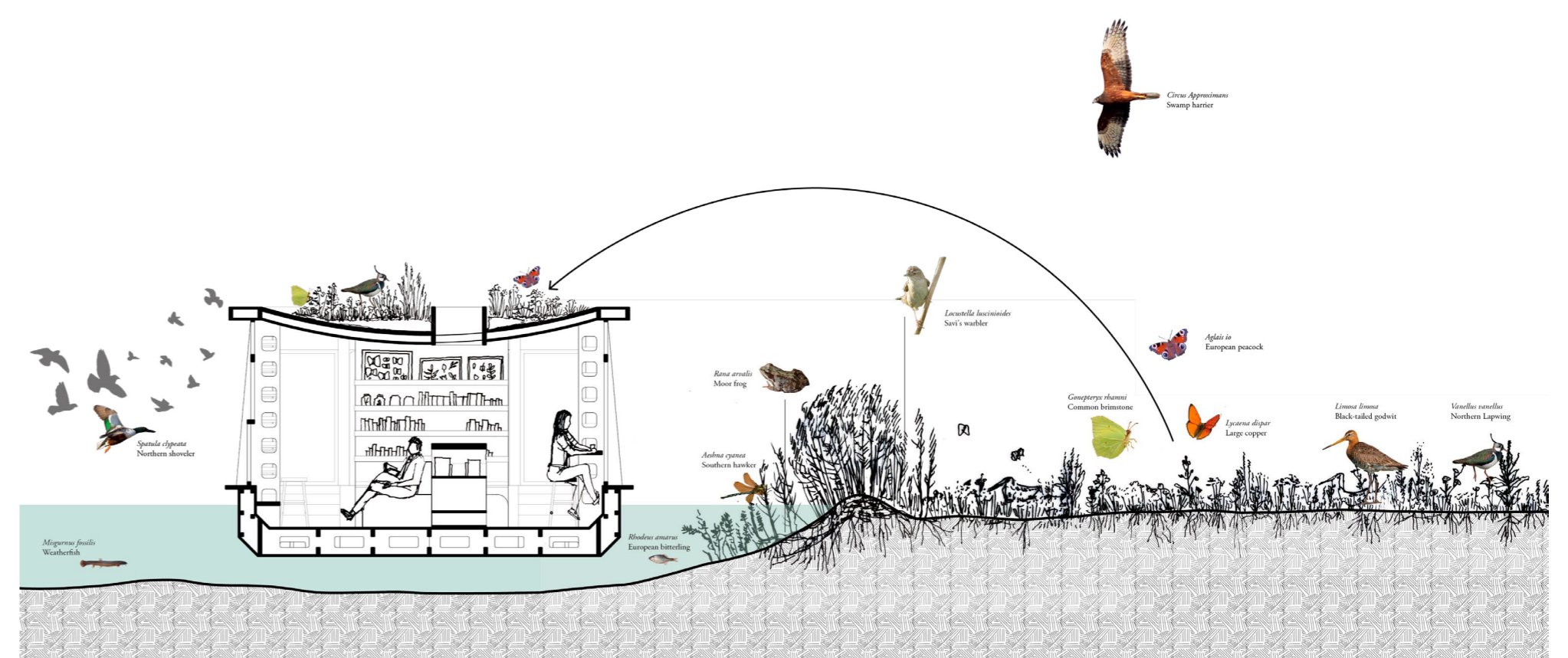
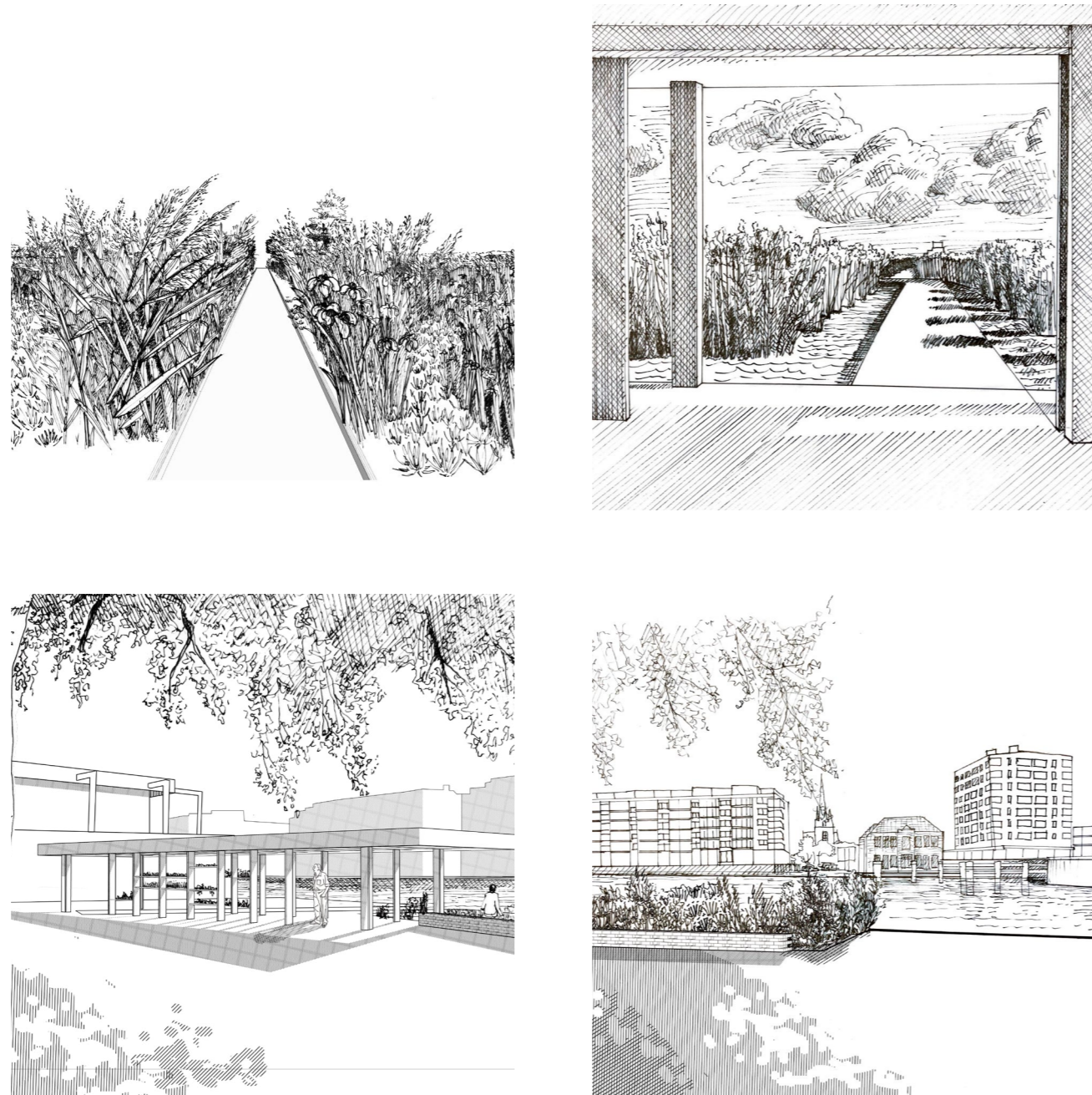


LANDSCAPE TRANSFORMATION

The research on how the Vessel will conjoining the nature succession of polder patches, human intervention will play important role in the nature regenerate process by combining mowing, peat cutting, logging, and seeding.

EXPLORATION

The route of the Vessel is a linkage of places in the landscape. The sequential space that formed by the movement of the device interacting with the landscape.



PLATFORM FOR HUMAN AND NATURE

The Vessel as a moving landscape, also welcoming the flora and fauna to dwell on the Vessel, a moni-library also serves as a place for people to gain knowledge and make new connections.