

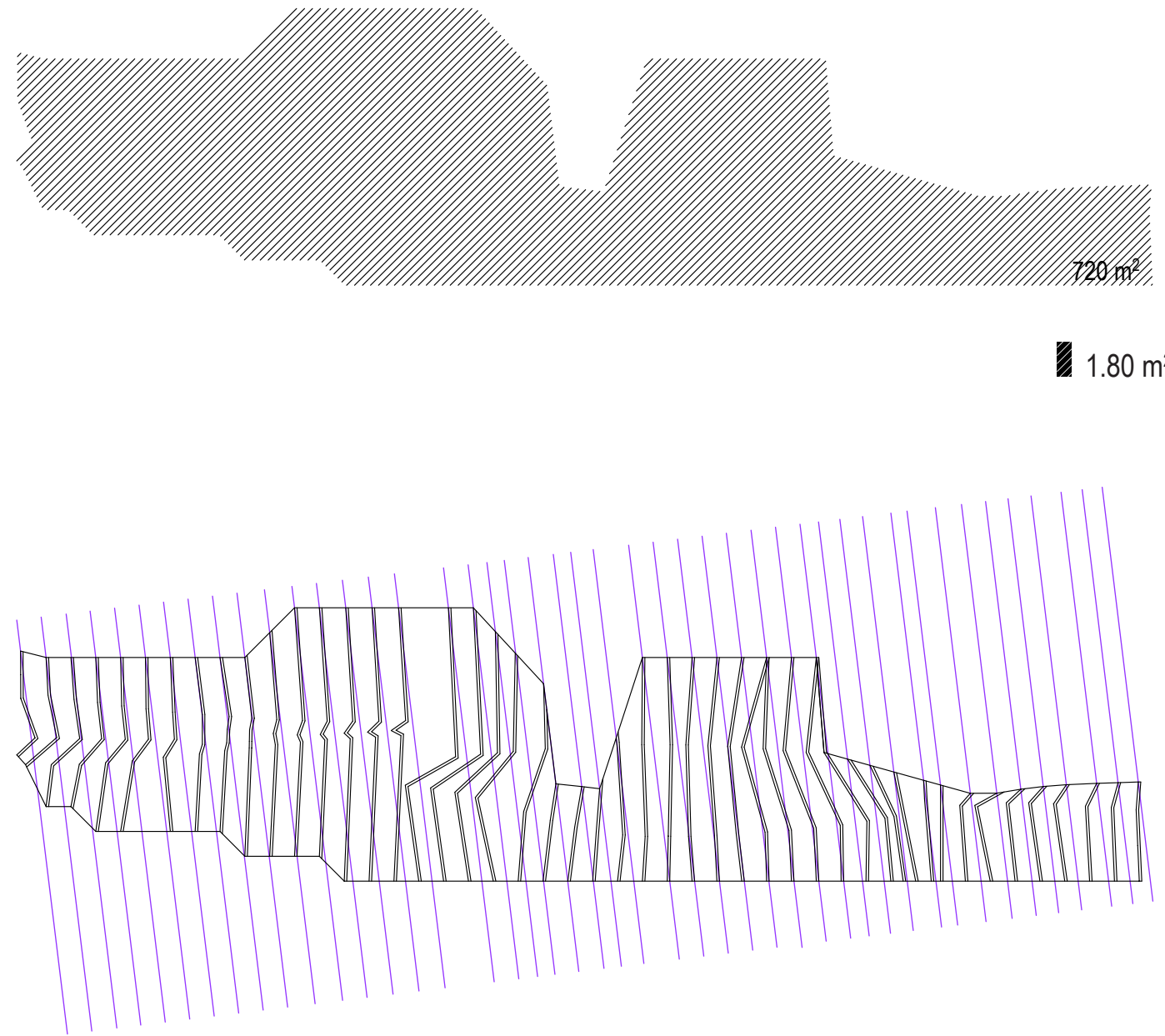
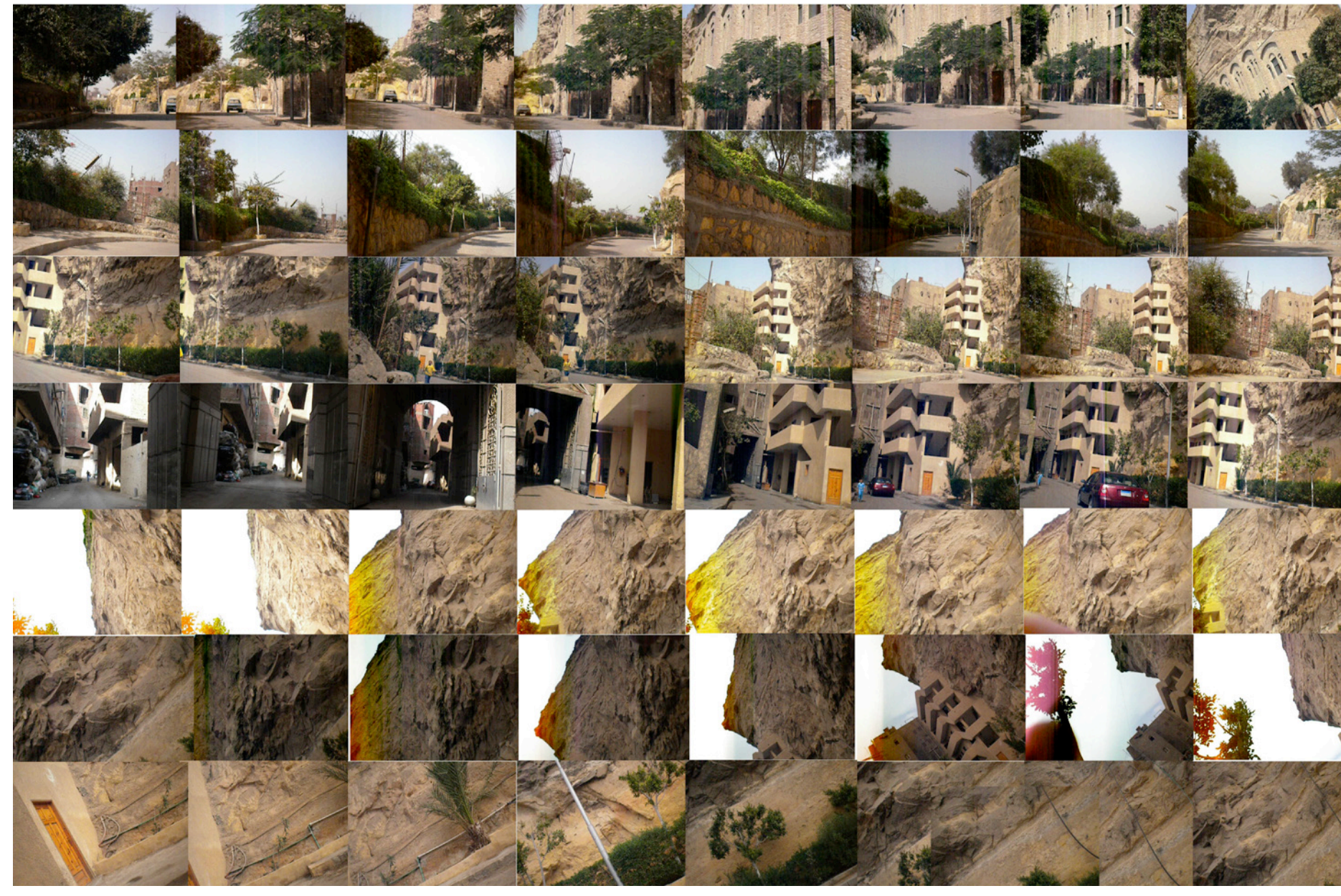
site: cliff front [vertical border]

principles: bridging two levels [top-bottom]
altering landscape

new border between the cliff and public space
creation of in-between space

layered structure - repetition of units

>>>program : vertically developed cemetery



ceremonial process

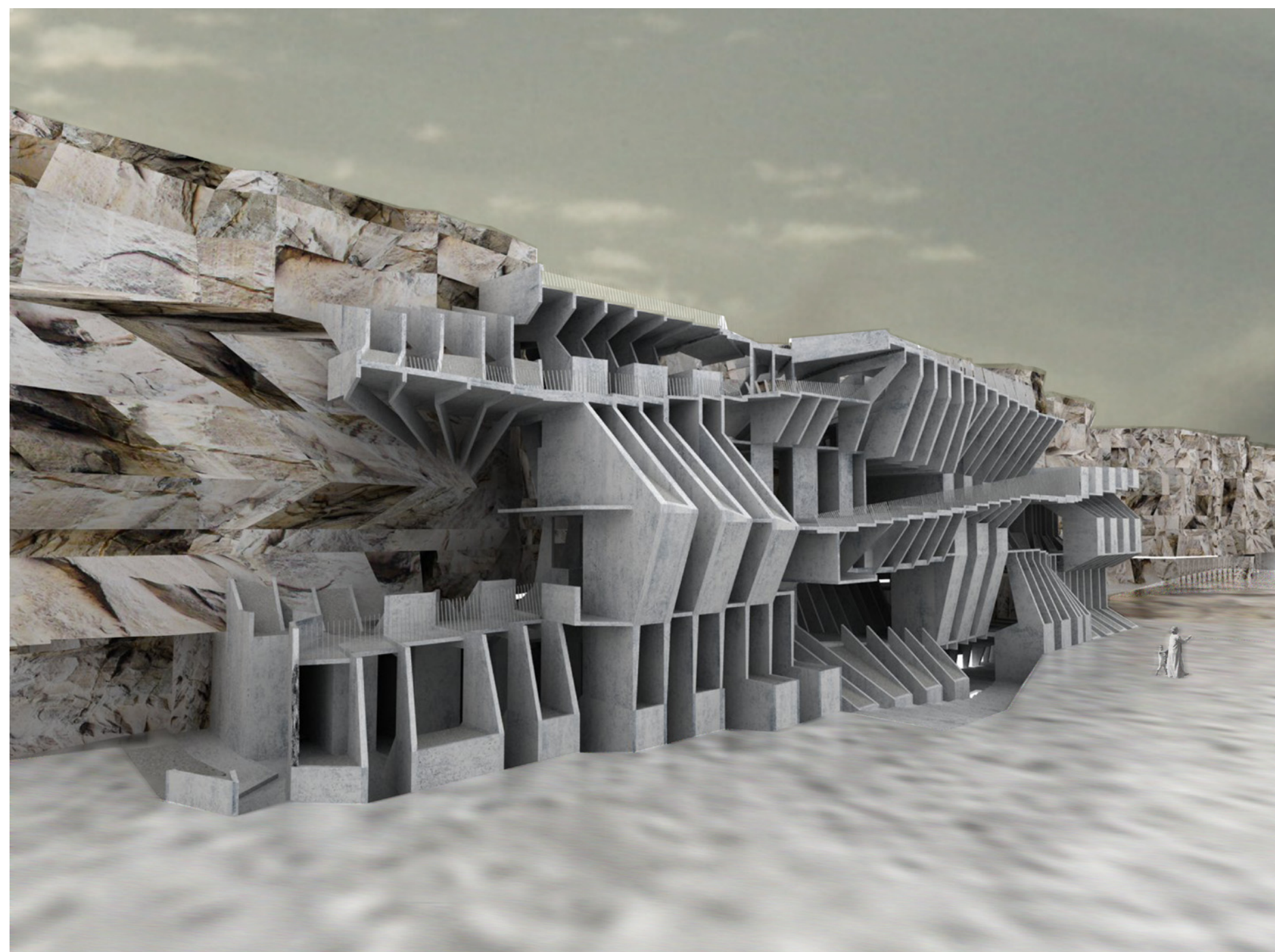
a / church ceremony > b / burial process > c / concentration for meal or coffee

building / landscape

a/ the borders between interior - exterior are blurred. in-between space?

b/ relation between structure and existing: structure attached to the cliff / in distance of it / curved cliff

c/ the structure is formed by "building-elements" such as slabs and beams



-01	-2.25 - ±0.00	[235]	001-235
00	±0.00 - +4.05	[31]	236-266
01	+4.05 - +6.60	[58]	267-324
02	+6.75 - +8.85	[22]	325-346
03	+8.25 - +11.70	[30]	347-376
04	+10.35 - +13.50	[15]	377-391
05	+13.65 - +15.60	[1]	392
06	+15.75 - +18.90	[4]	393-396

