

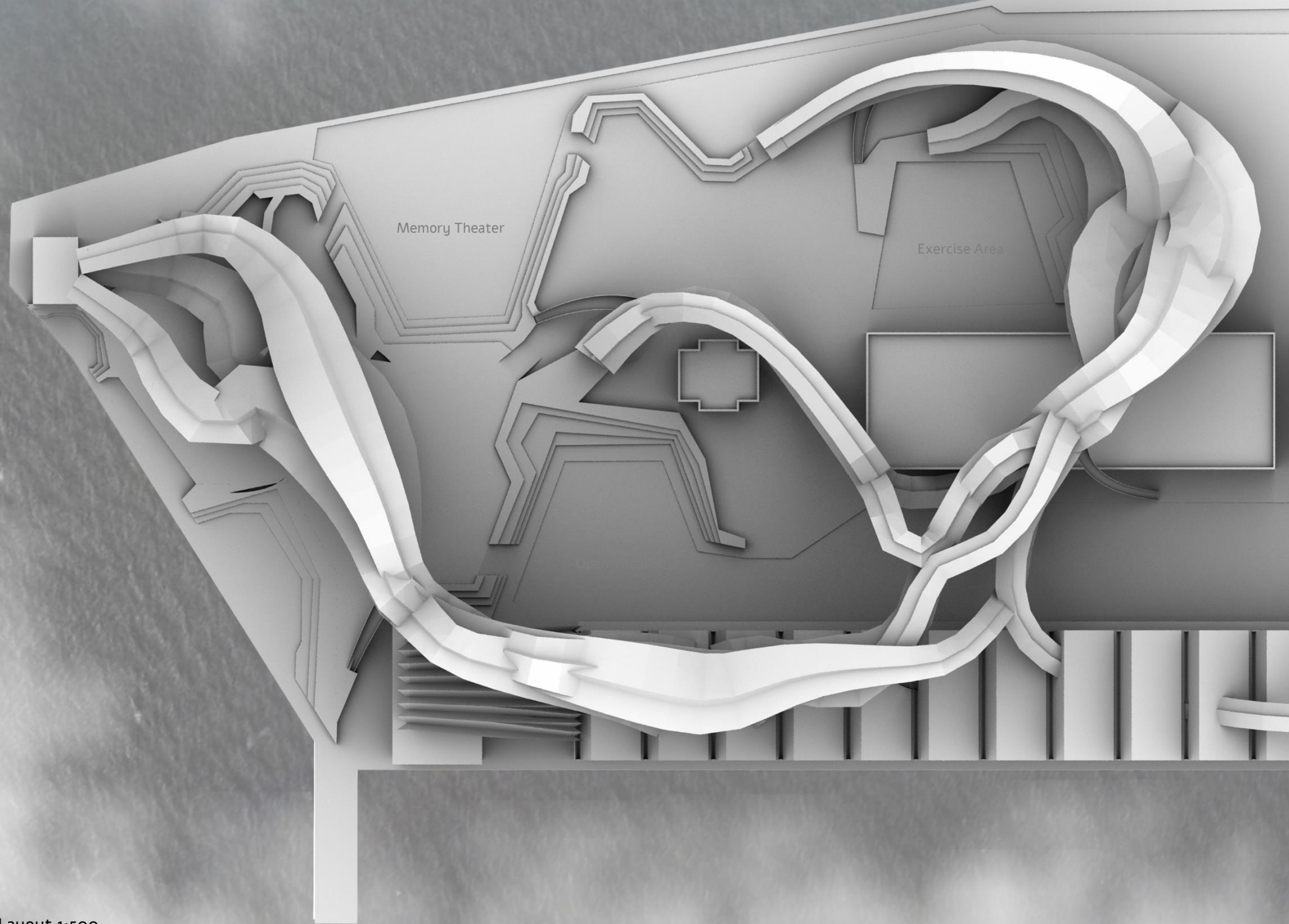
Panoramic Viewpoint

Fish restaurant

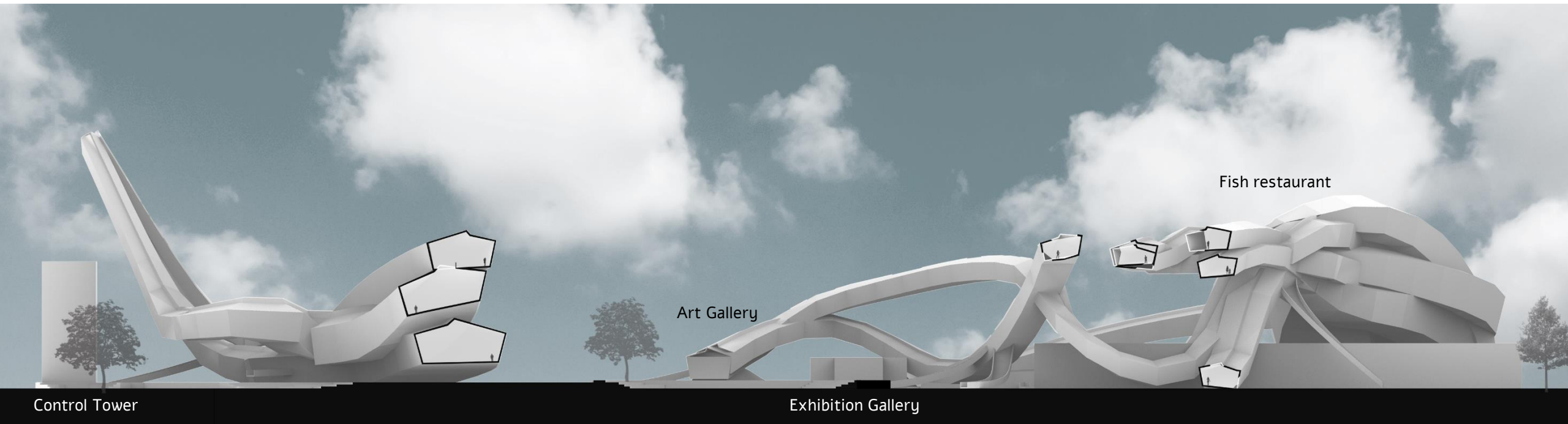
Maritime Club

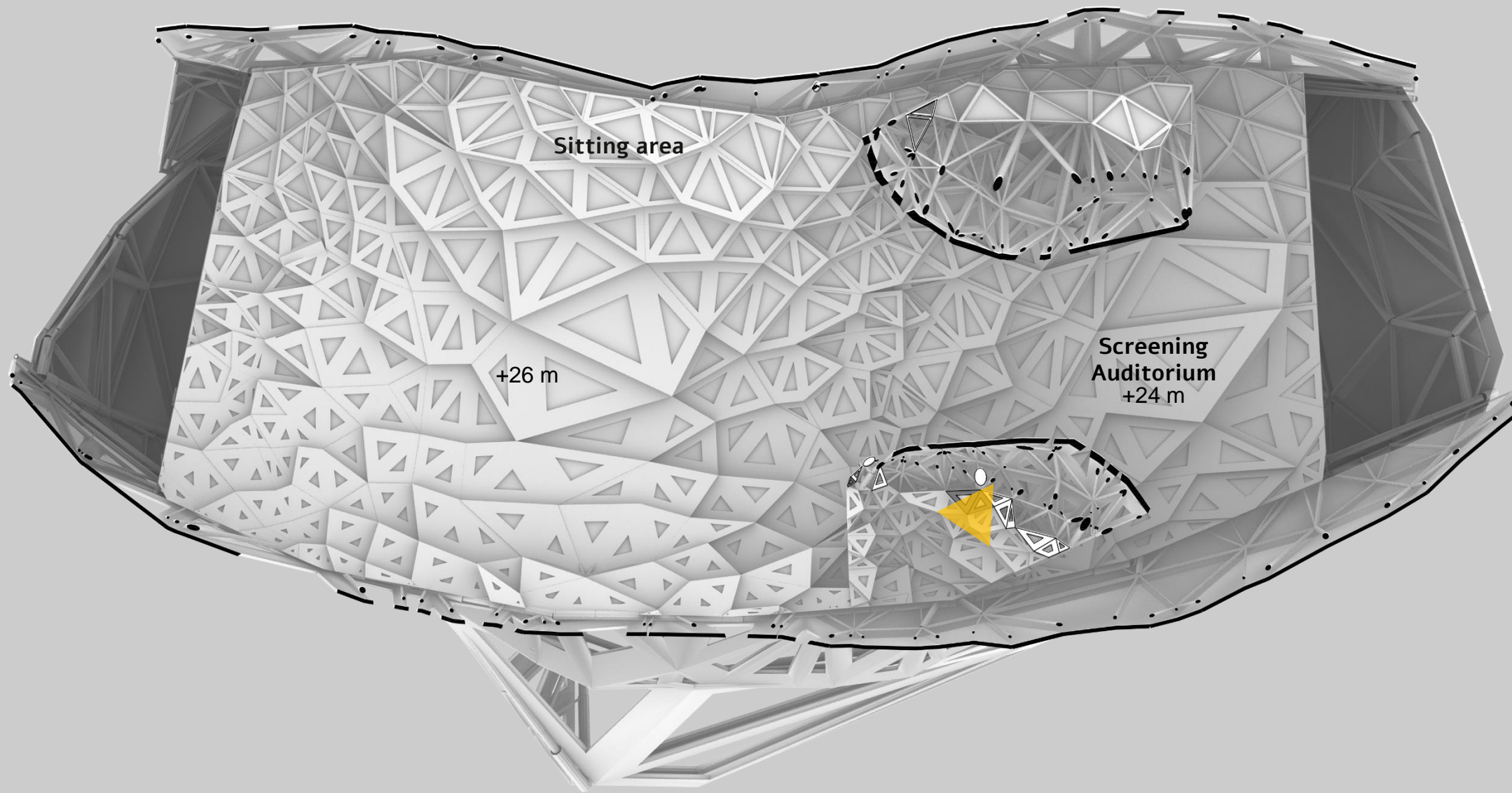
Cafe

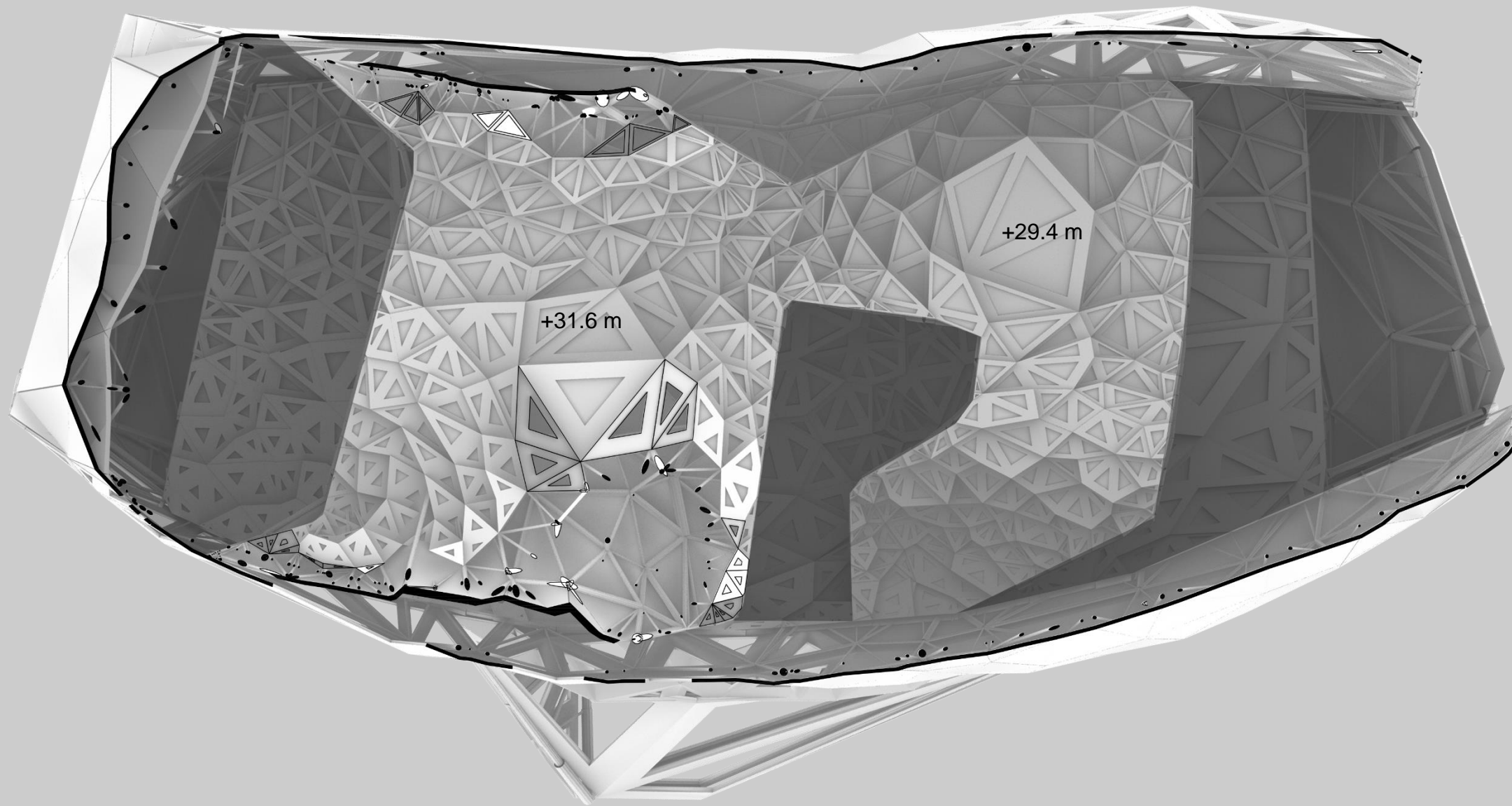
Media Center

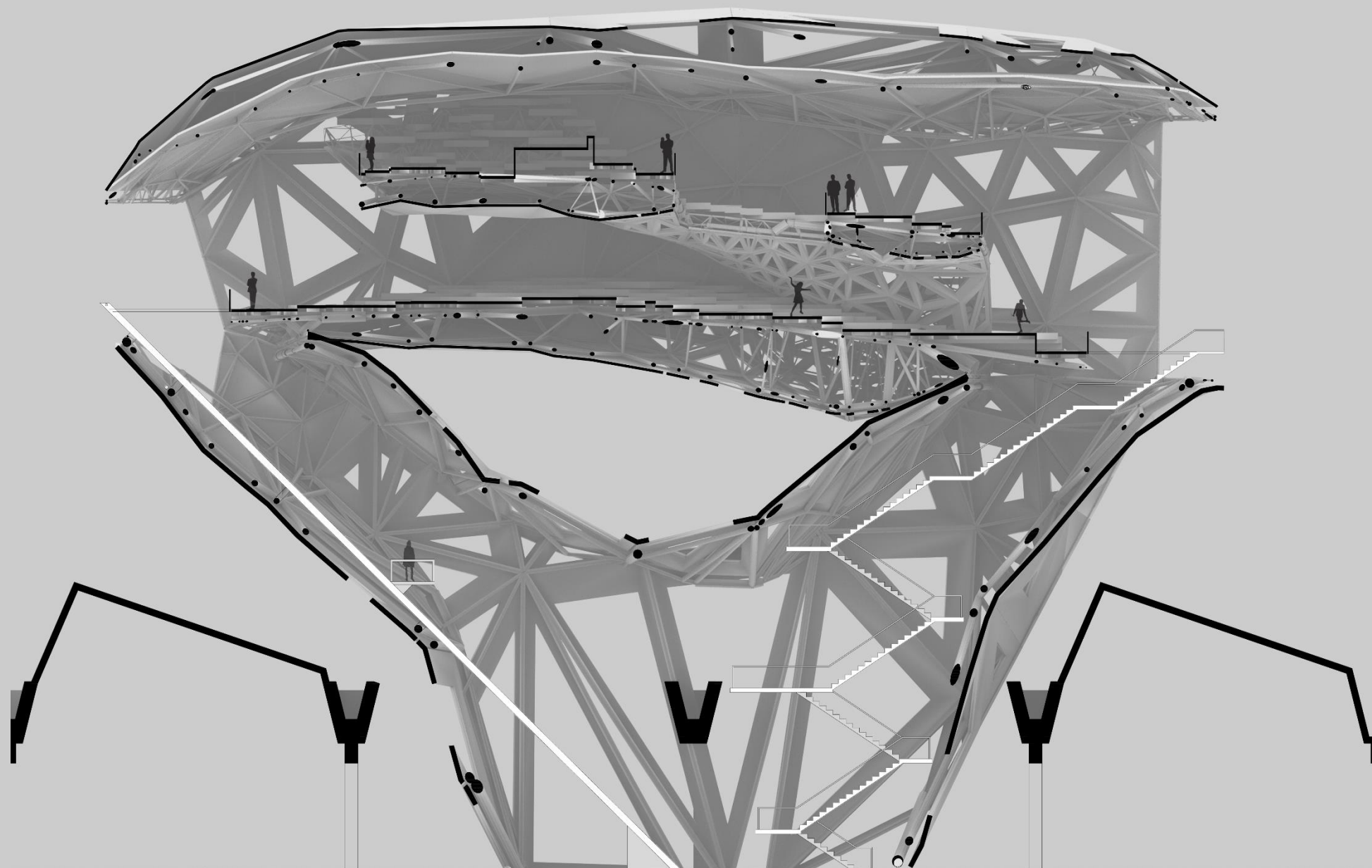




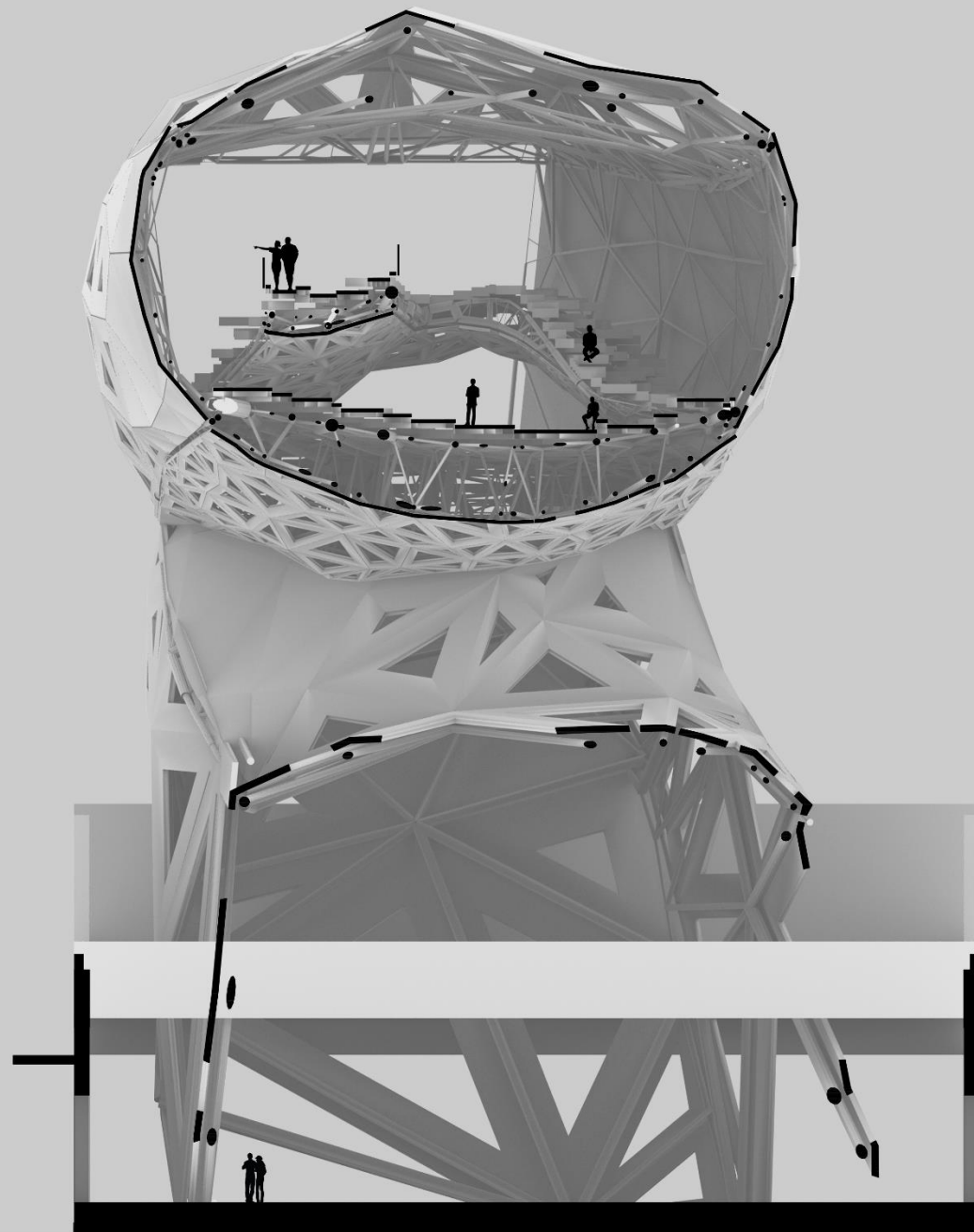








Section A-A 1:50



Section A-A 1:20

Cultural consumers



Socialites



Althletes



Sailing enthusiasts



Panorama Theater

Drive-In (Boat-In)

Interactive Playground

Multiply Screens

IMax

Lighthouse signals

Alluring glow

Guiding lights

Projected image

Guiding lights

Circulating flare

Passive viewer

Personal space

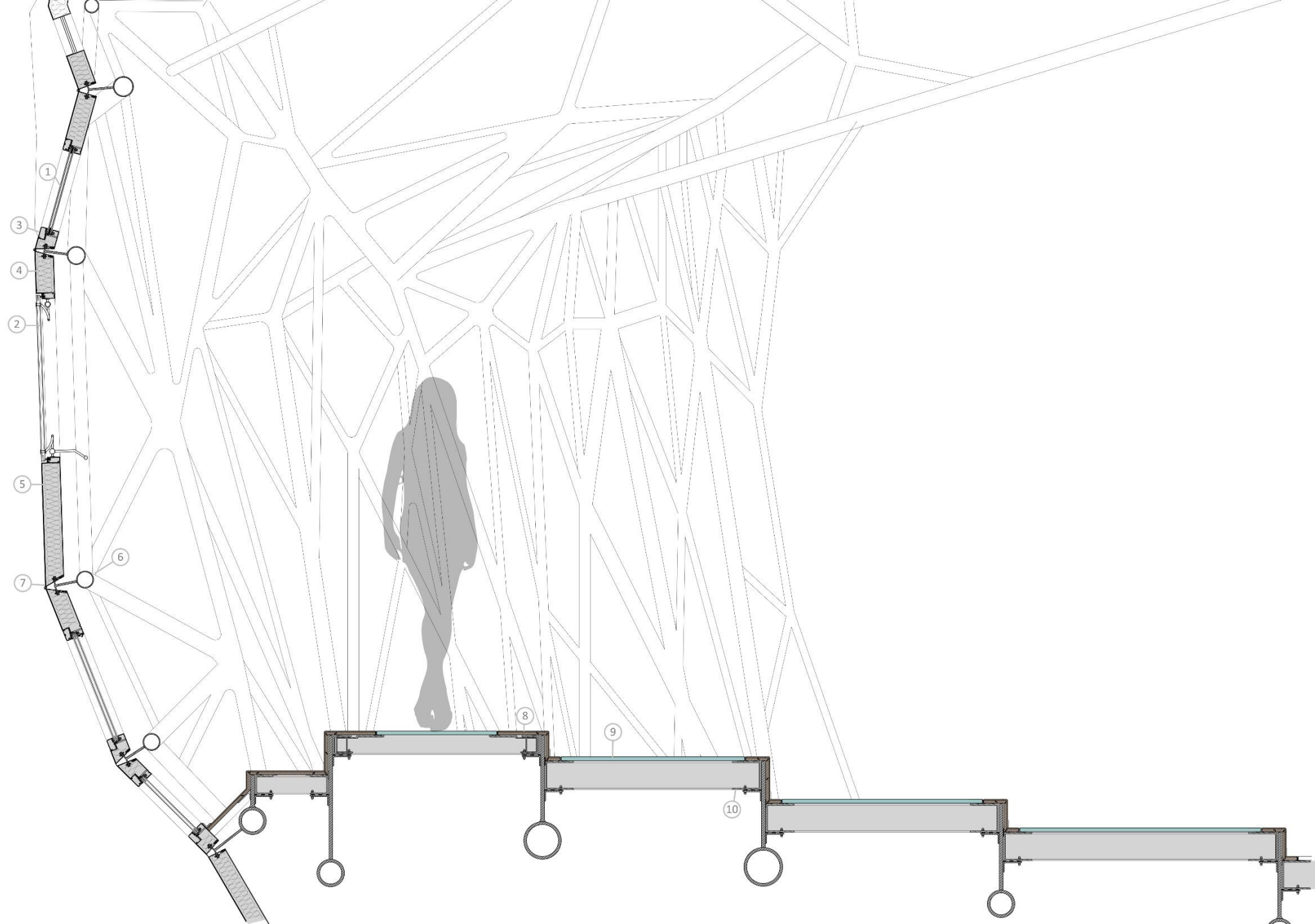
Choosing observer

Interactive player

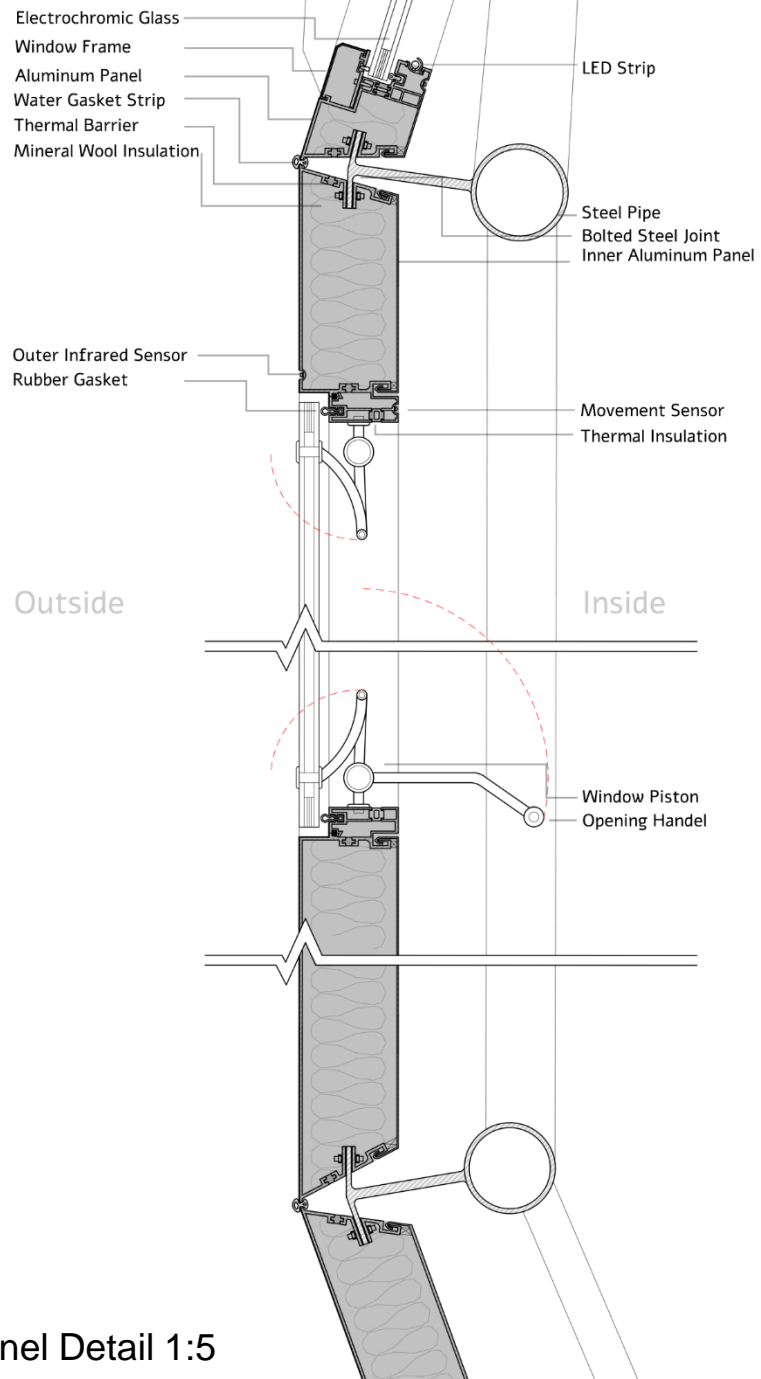
Choosing observer

Passive viewer

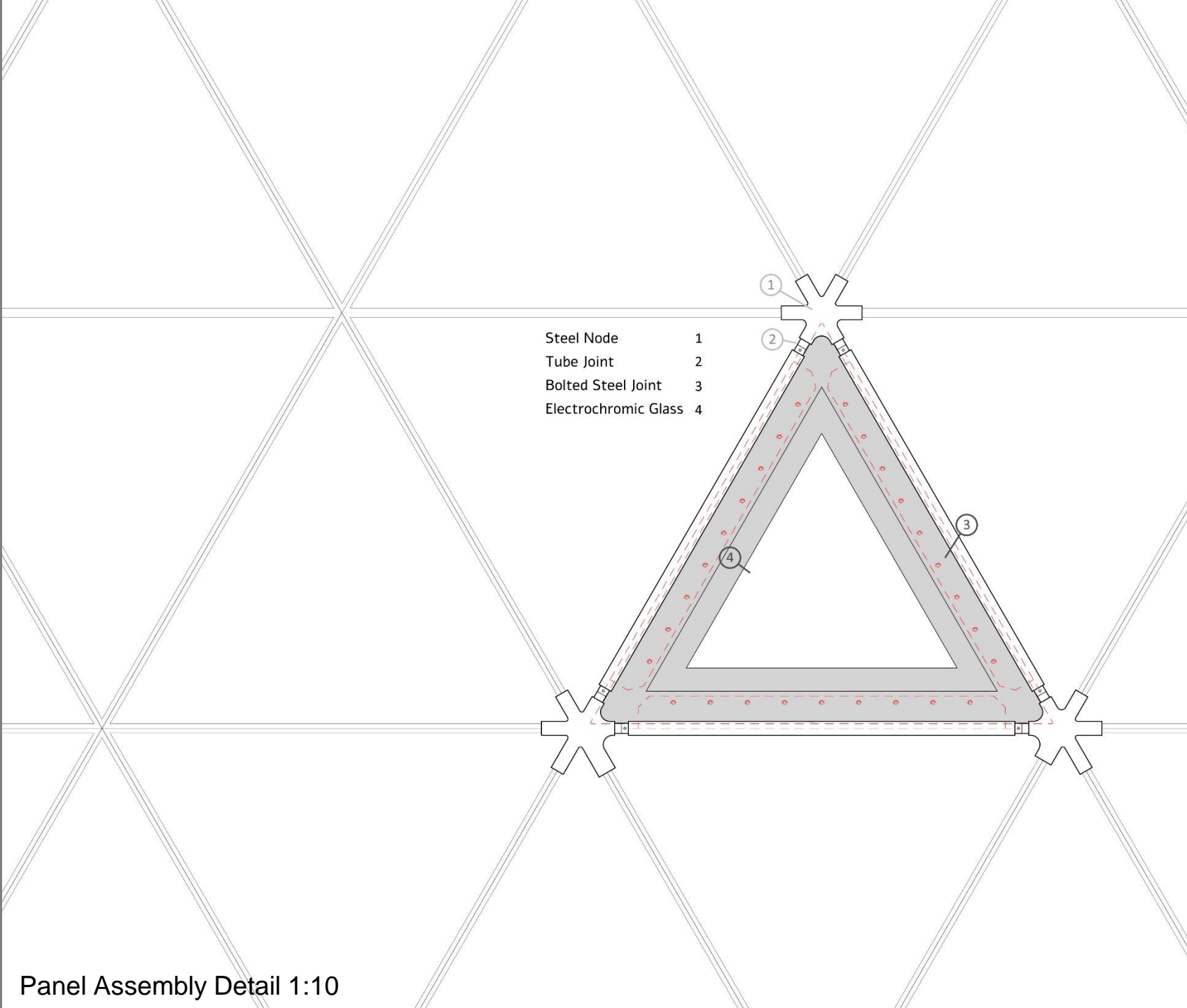
- Electrochromic Glass 1
- Openable Window 2
- Window Panel 3
- Aluminum Panel 4
- Mineral wool insulation 5
- Steel rod construction 6
- Control Joint 7
- Plywood 8
- Tempered Glass (20mm) 9
- Steel Profile 10



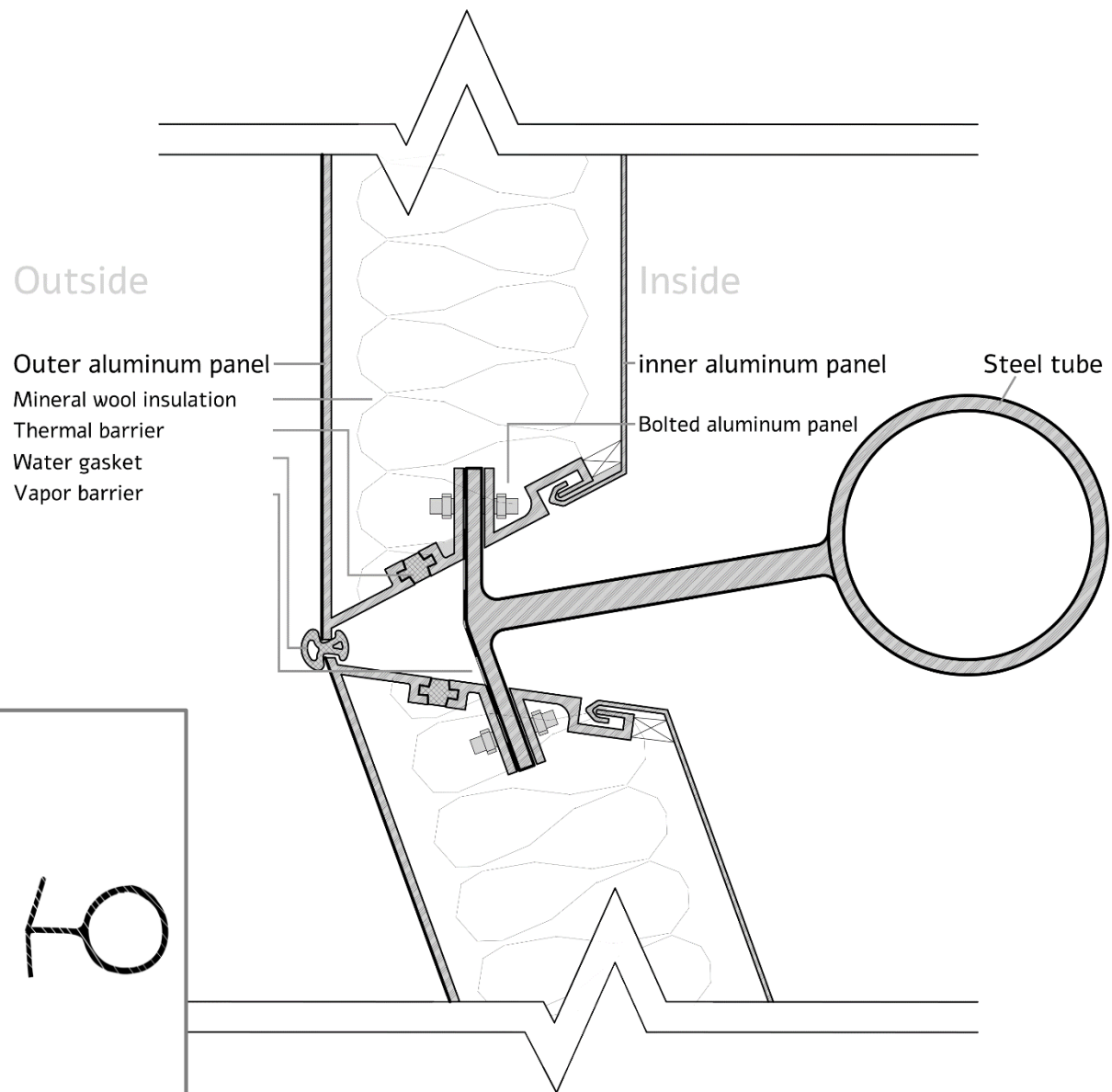
Façade Detail 1:10



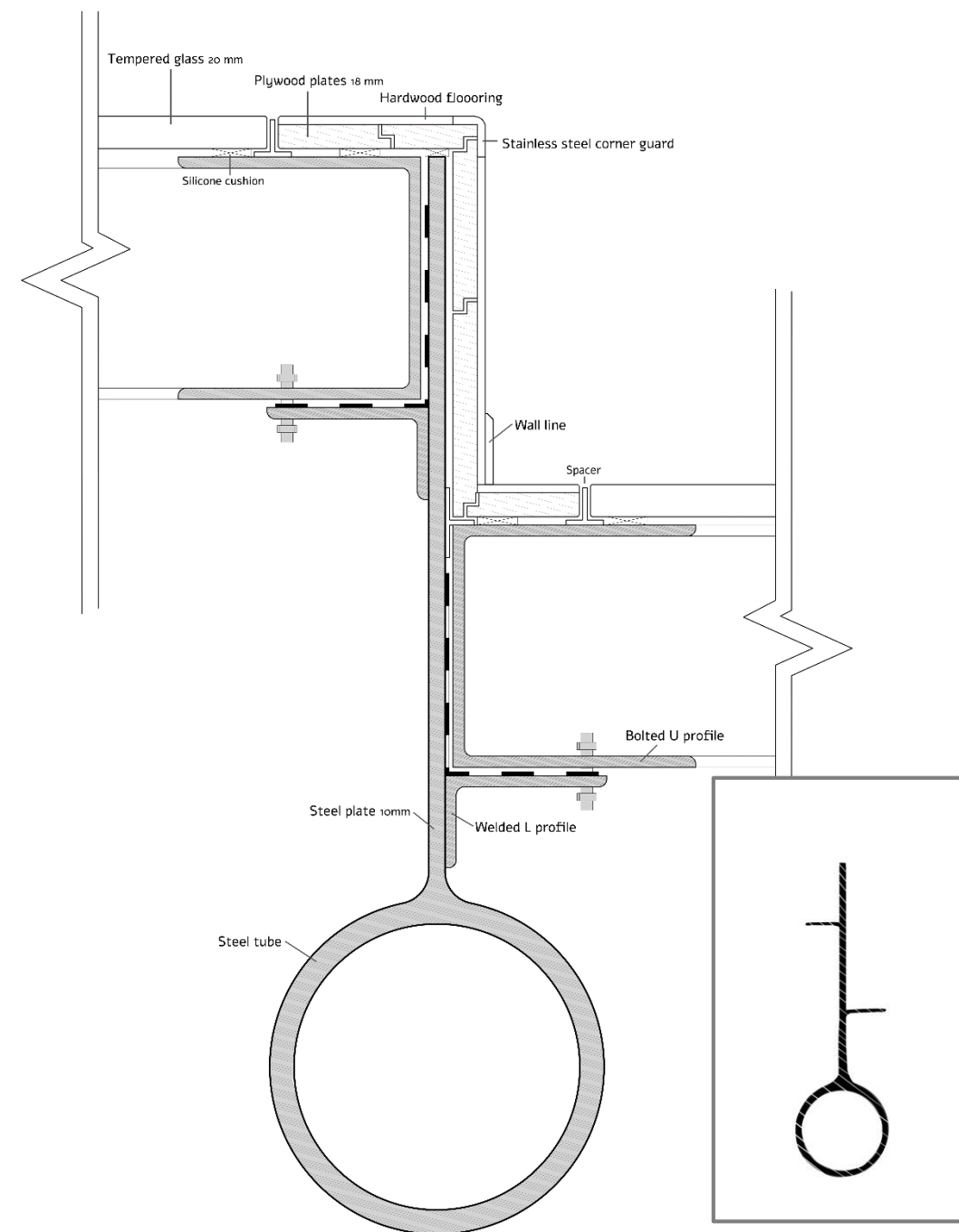
Panel Detail 1:5



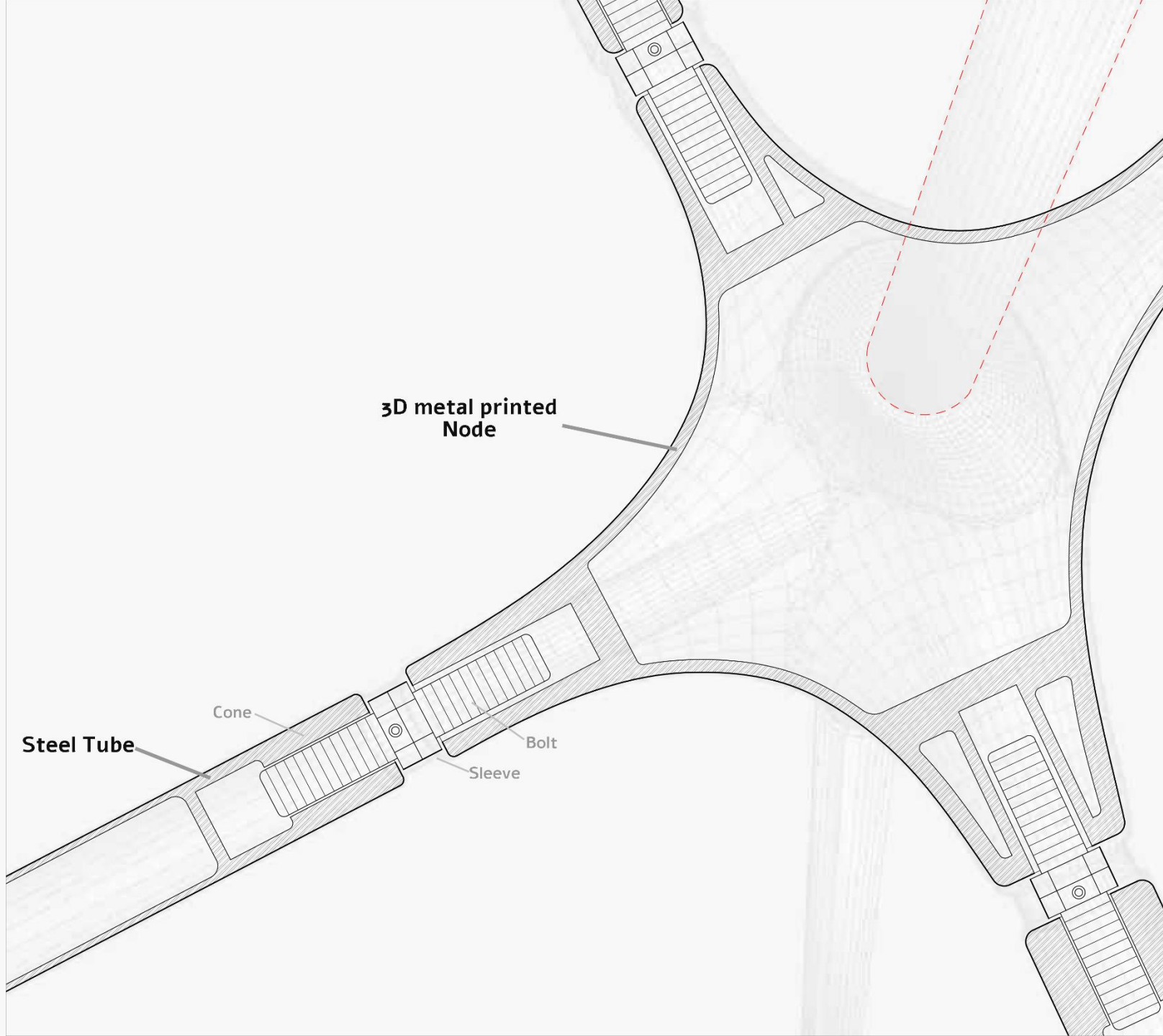
Panel Assembly Detail 1:10



Control Joint Detail 1:1



Floor panel detail 1:2



**3D metal printed
Node**

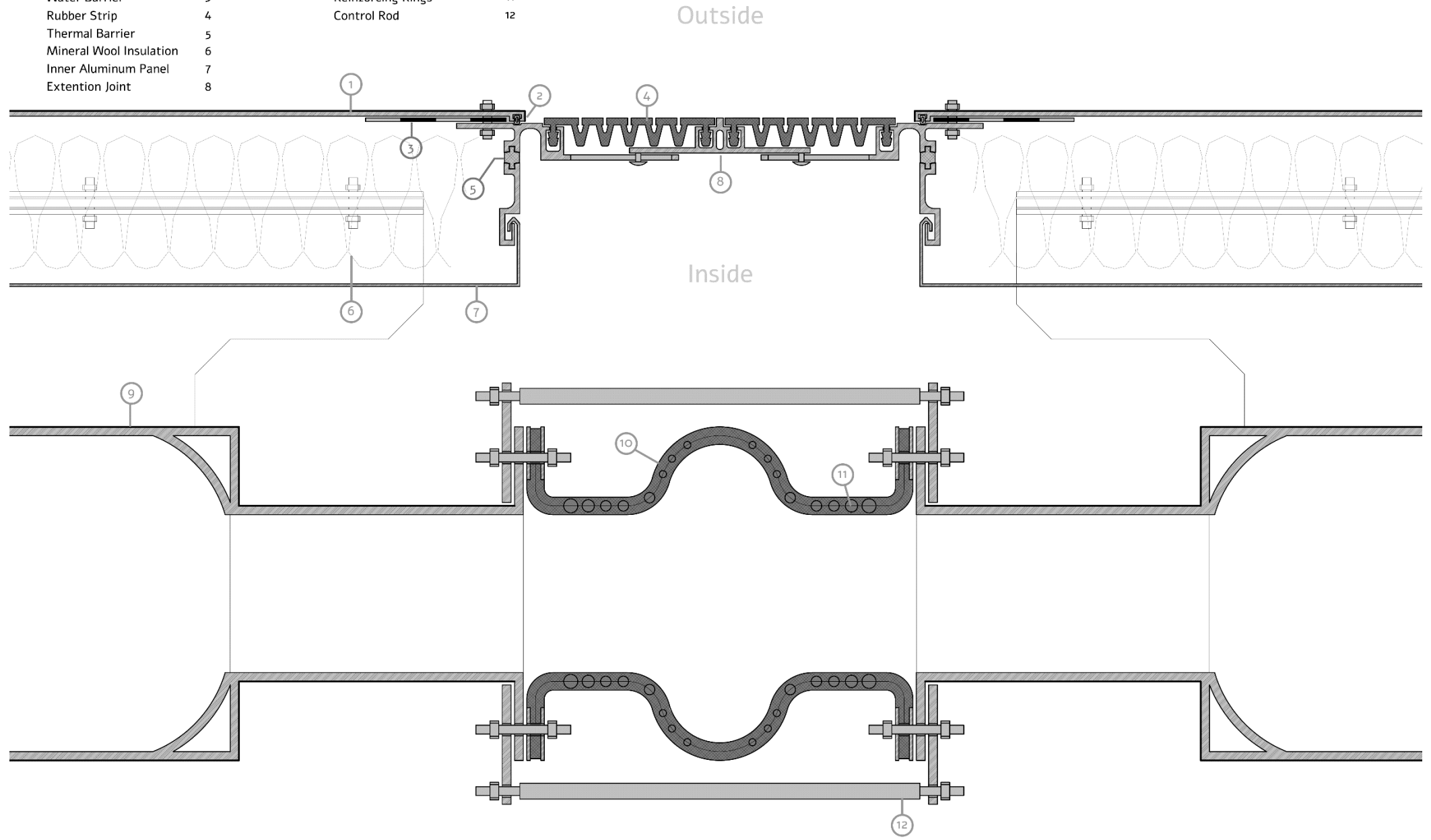
Steel Tube

Cone

Bolt

Sleeve

- | | | | |
|-------------------------|---|----------------------------|----|
| Outer Aluminum Panel | 1 | Steel Tube | 9 |
| Joint Water Gasket | 2 | Extendable Bellows Element | 10 |
| Water Barrier | 3 | Reinforcing Rings | 11 |
| Rubber Strip | 4 | Control Rod | 12 |
| Thermal Barrier | 5 | | |
| Mineral Wool Insulation | 6 | | |
| Inner Aluminum Panel | 7 | | |
| Extention Joint | 8 | | |



Thermal Expansion Joint Detail 1:2