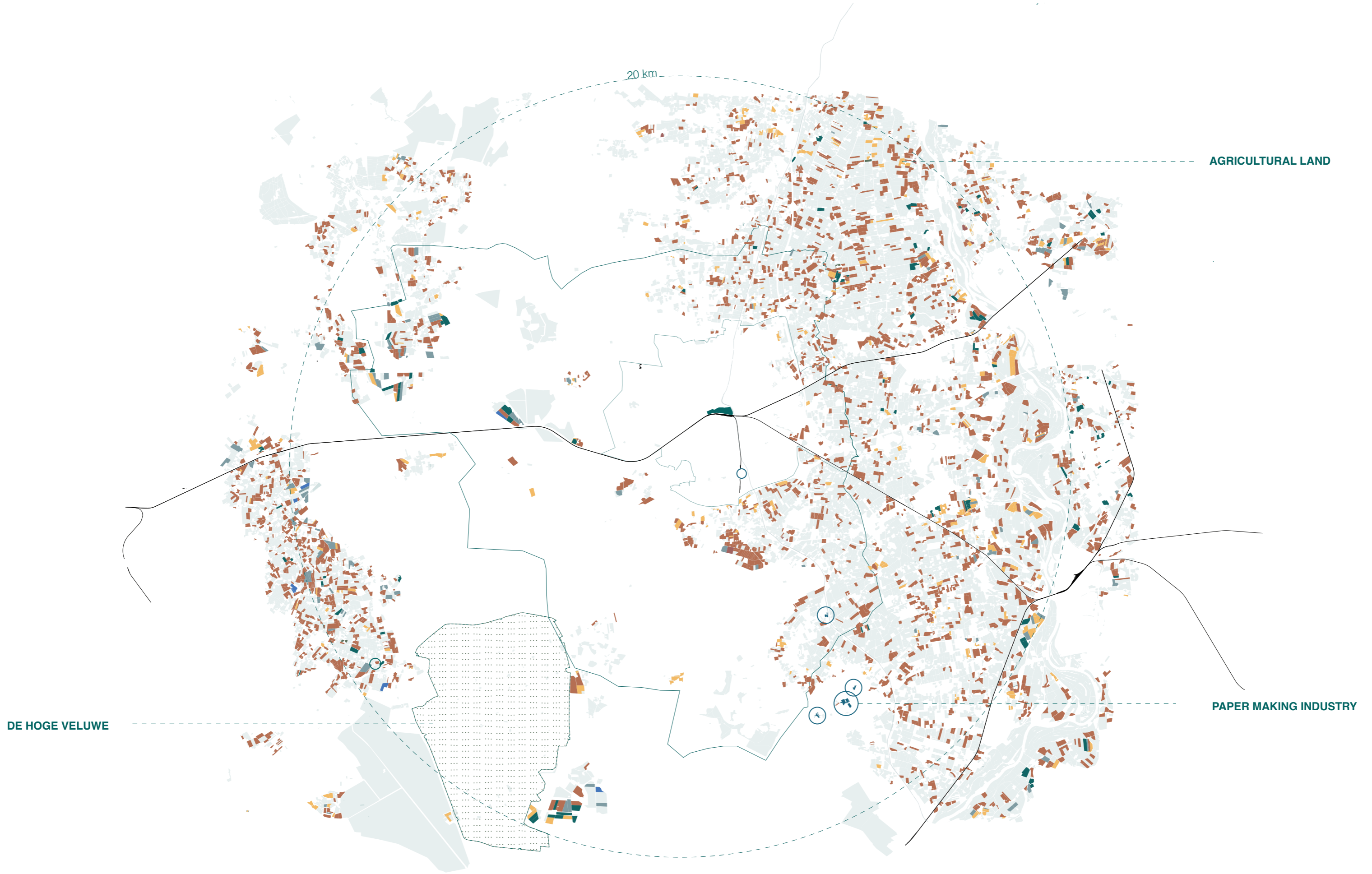
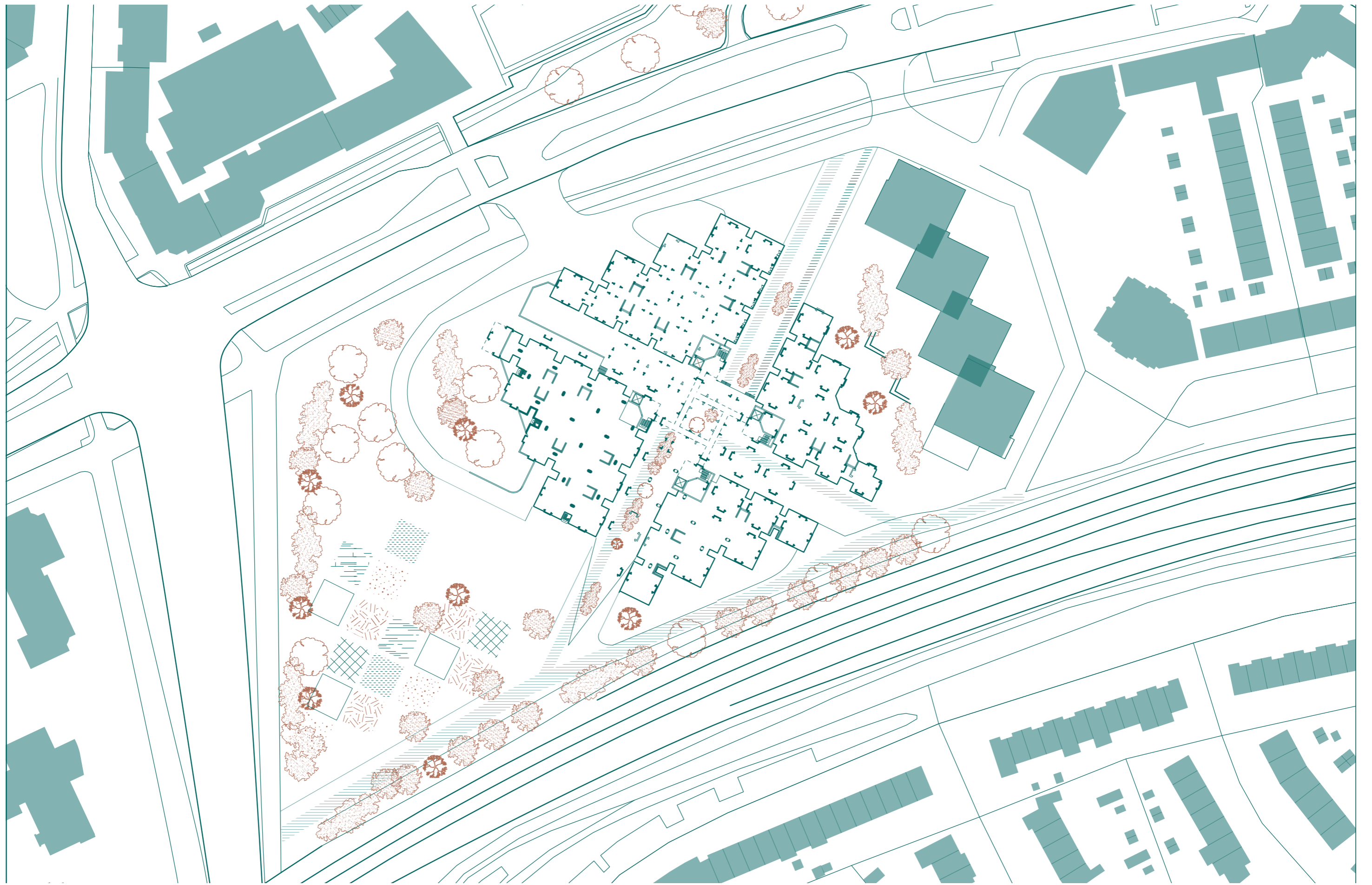


P5 Drawing Pack
Local Production Centraal Beheer

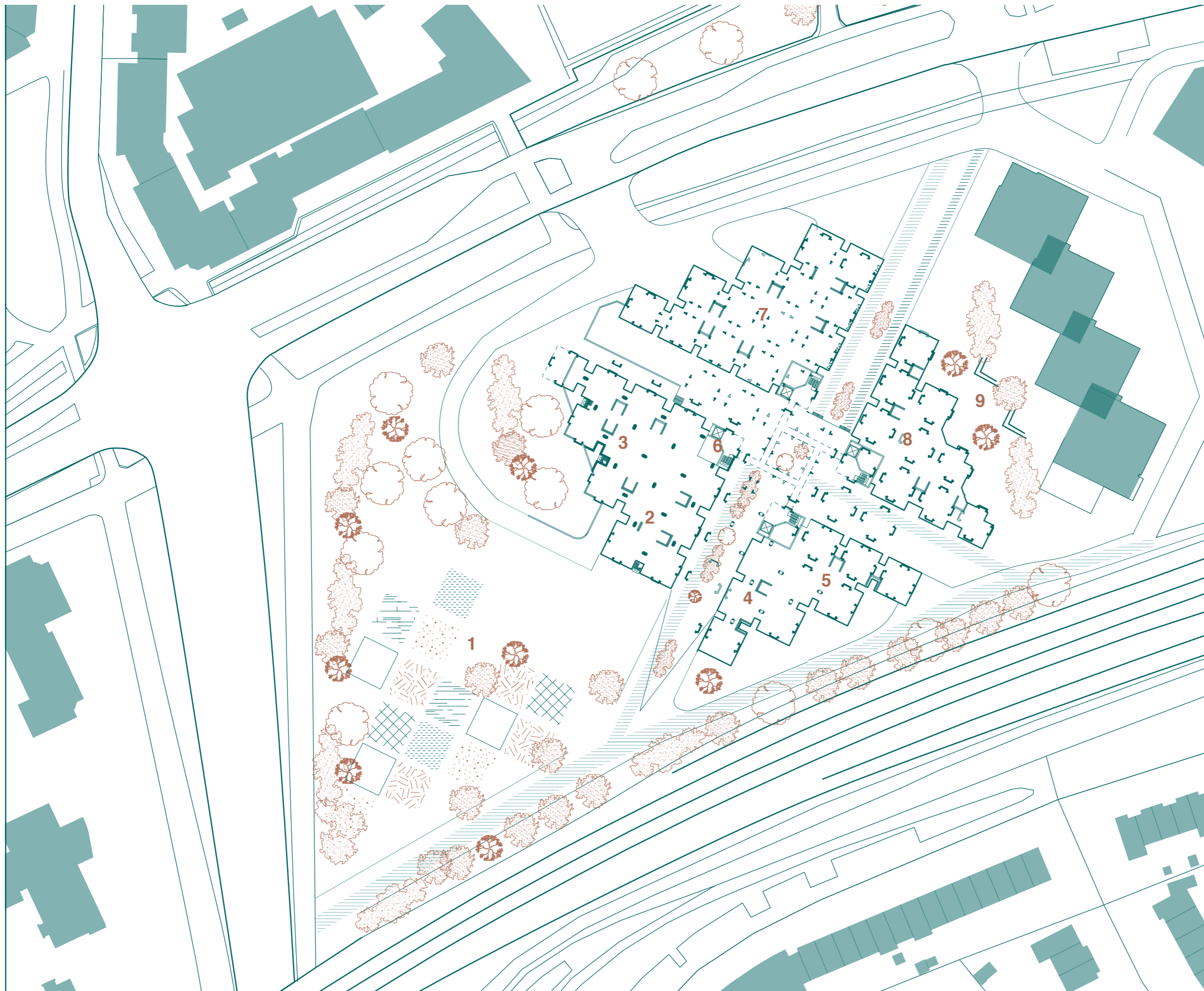
Natasha Cleaver
5096553



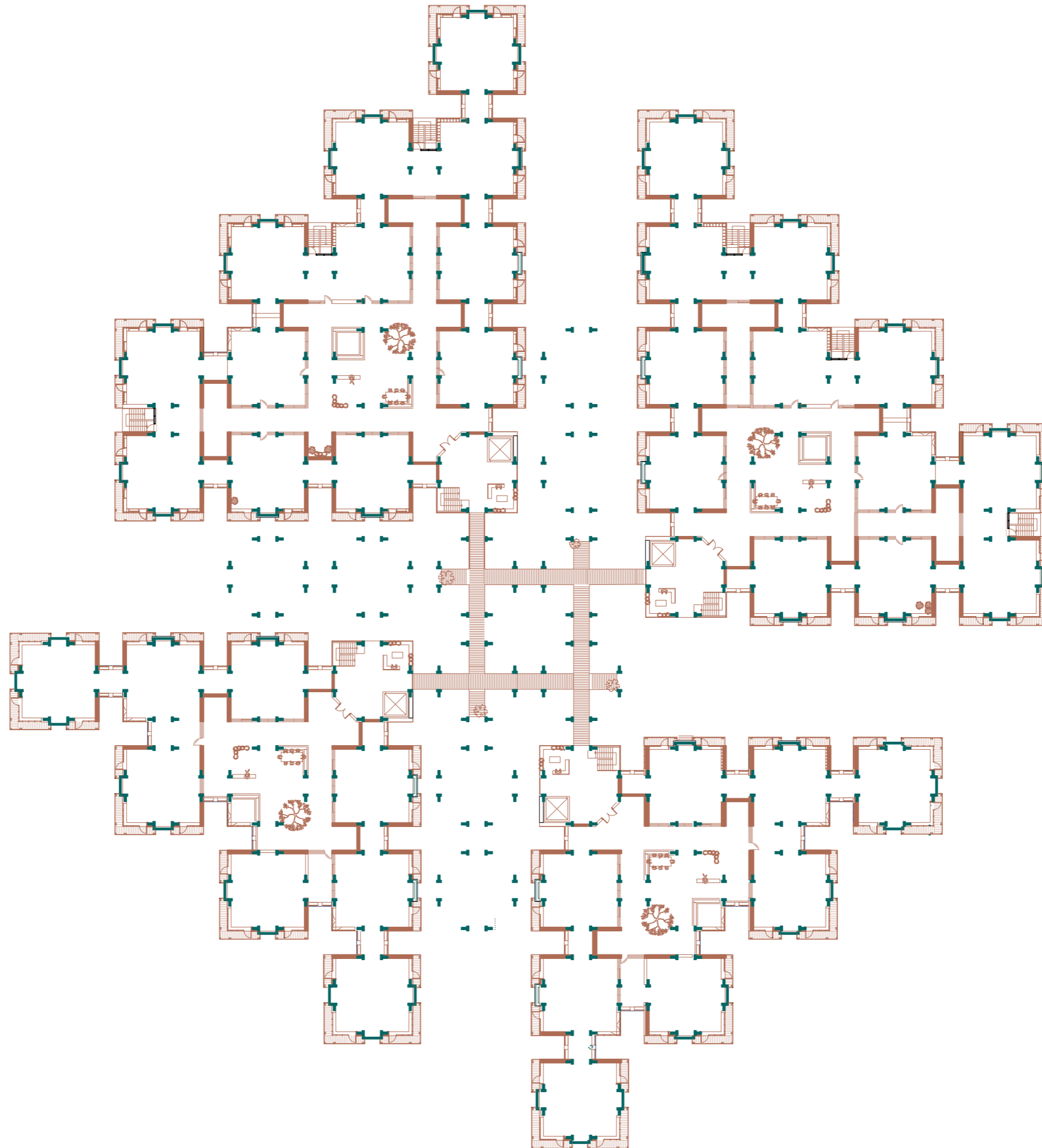




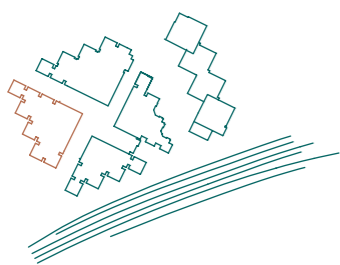
Site Plan
1 - 1000



- 1. Productive Landscape
- 2. Construction Workshop
- 3. Material Storage
- 4. Design Meeting Space
- 5. Community Workshop
- 6. Residential Access + Plant Room
- 7. Market/ Retail Space
- 8. Cafe + Research Workspace
- 9. Public Plaza



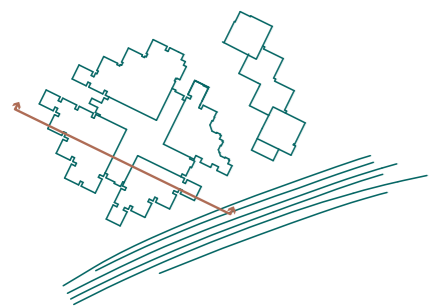
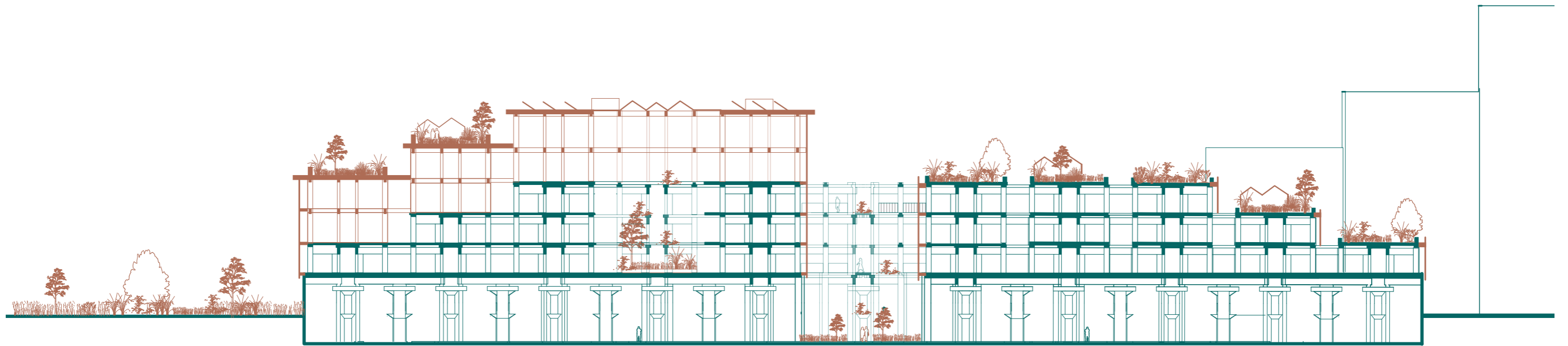
Level 2 Floor Plan
1 - 500 at A3



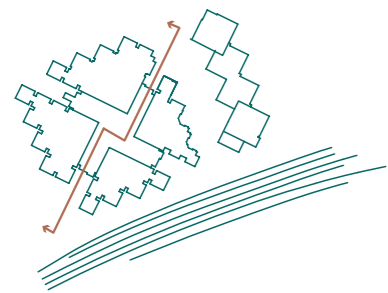
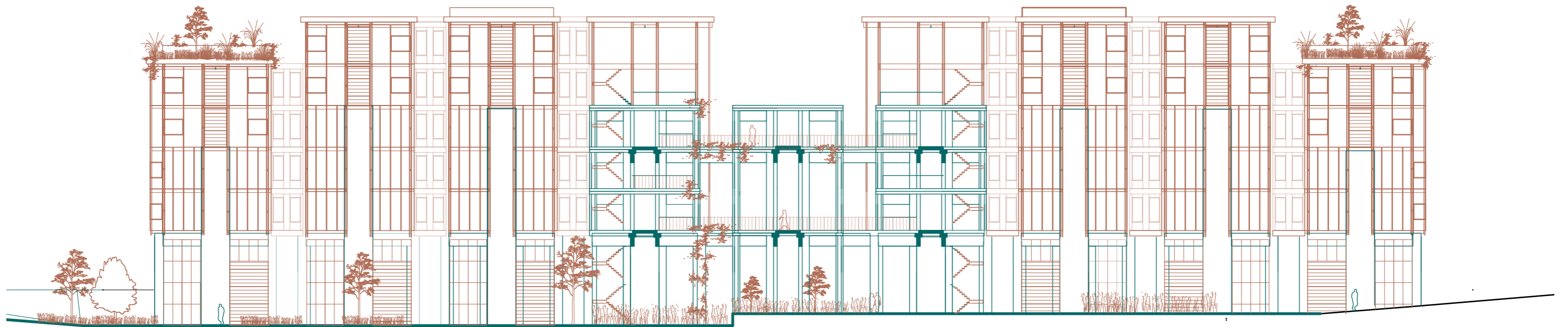
Floor Plan: Level 4
1 - 200



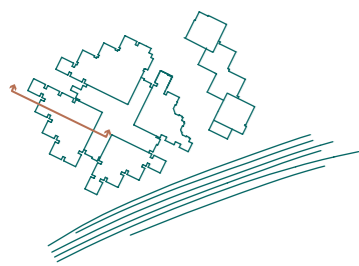
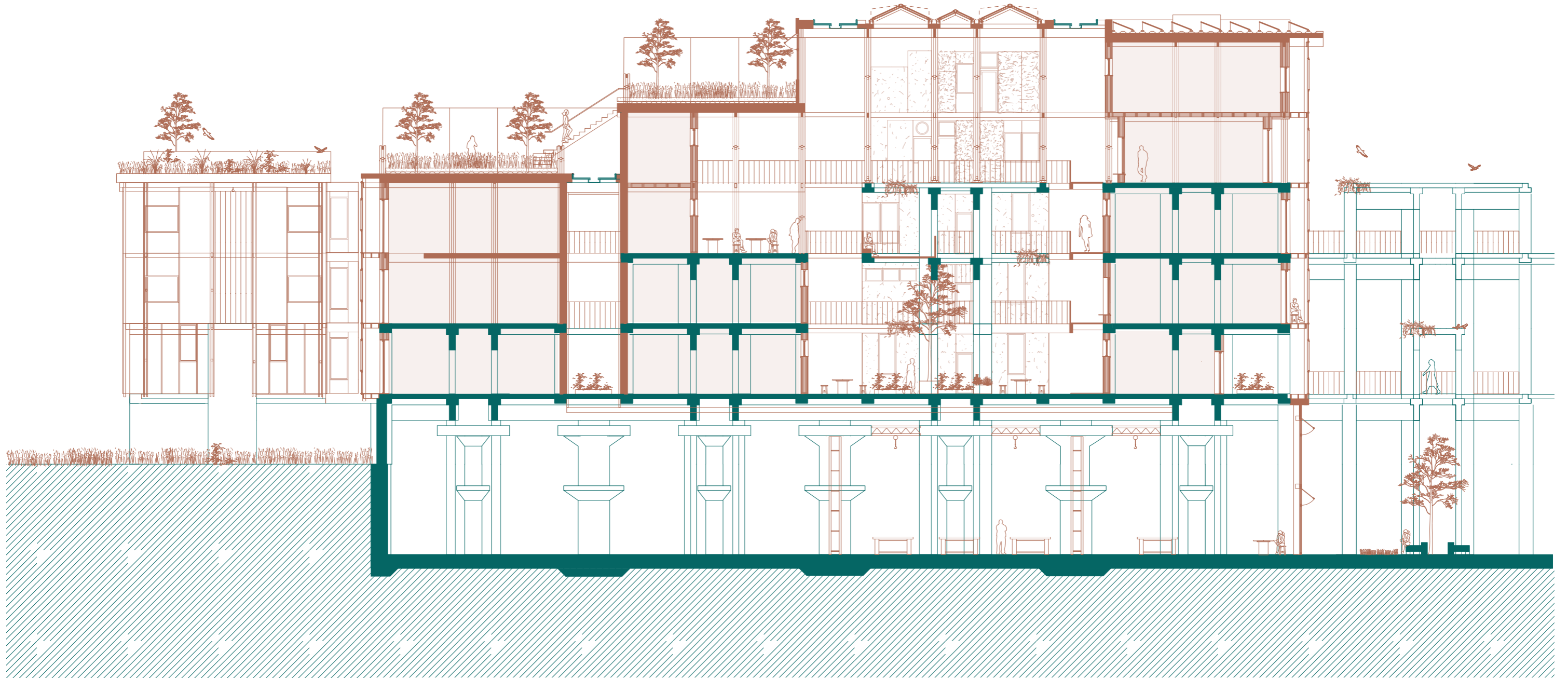
- 1. Communal Living+ Dining
- 2. Rentable Workspace
- 3. Rentable Storage Space



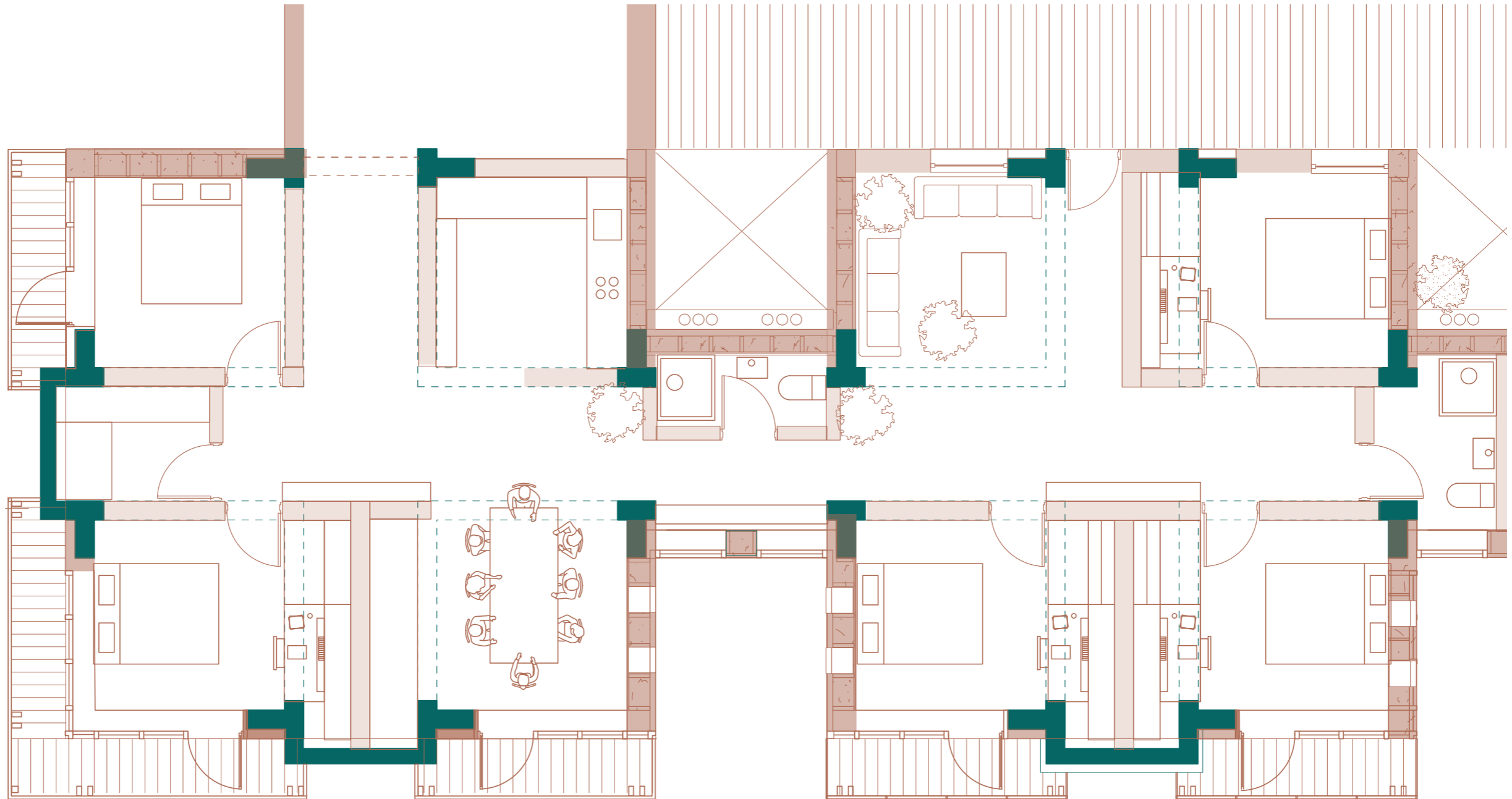
Section - North East
1 - 500



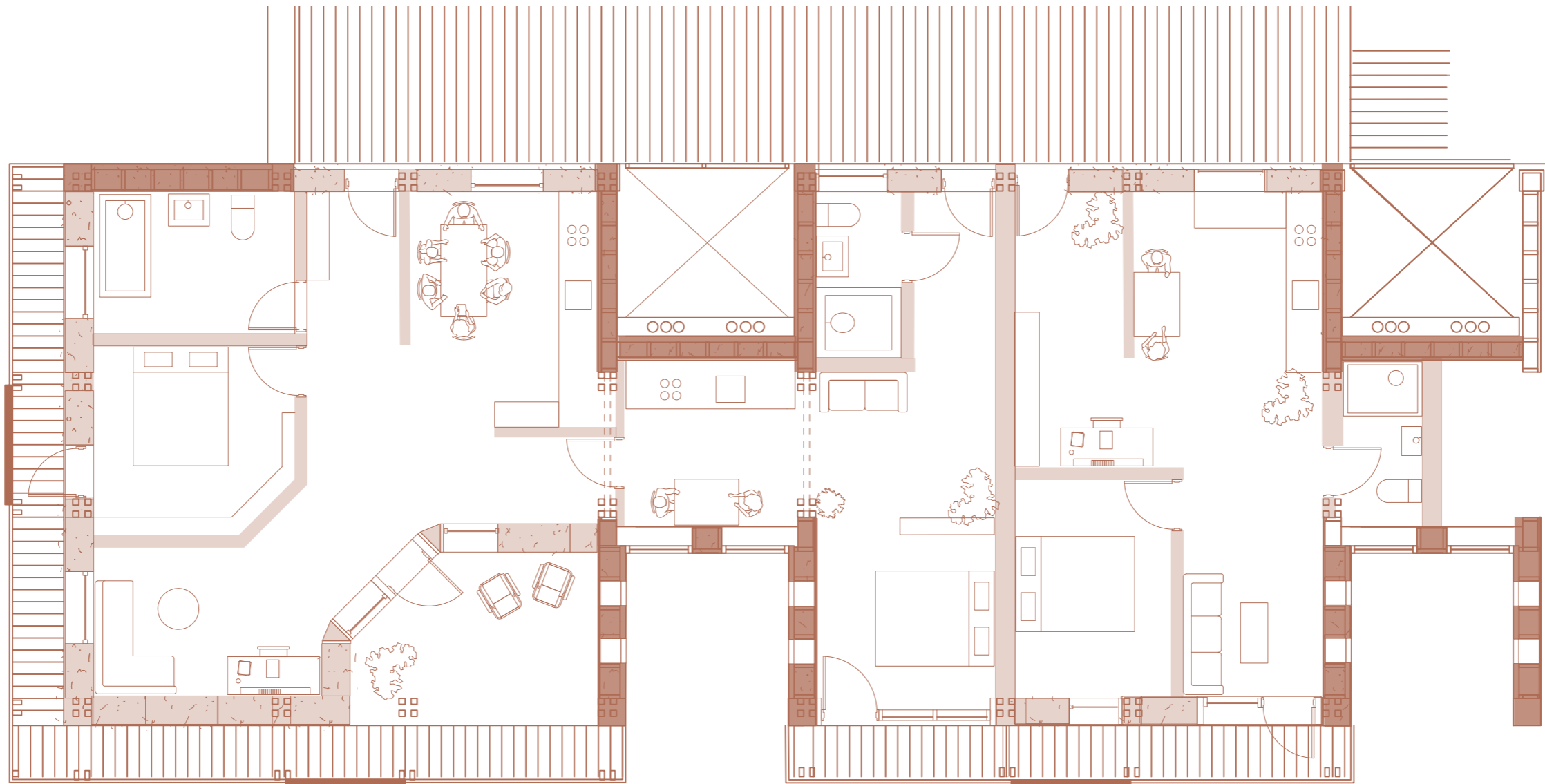
Elevation - North East
1 - 500



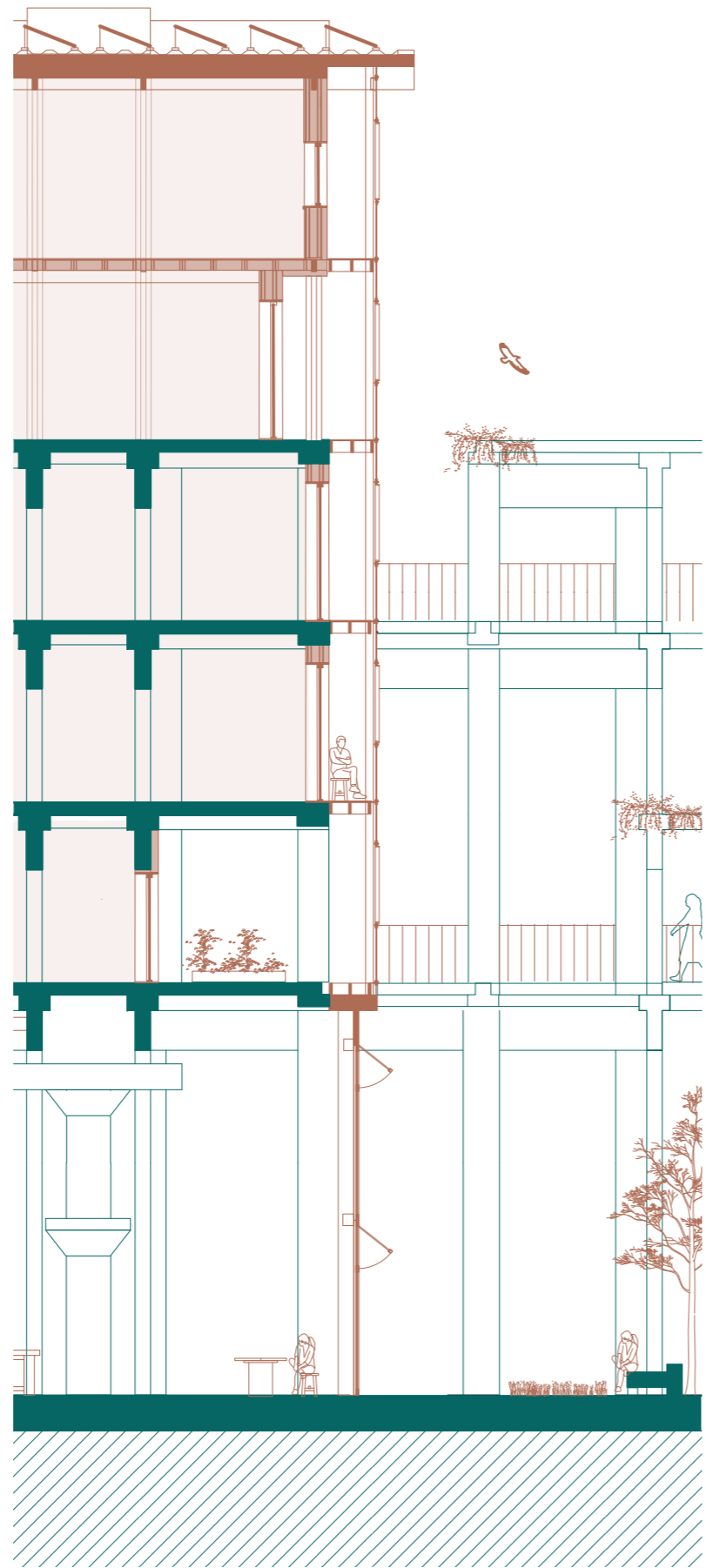
North East Section
1 - 200

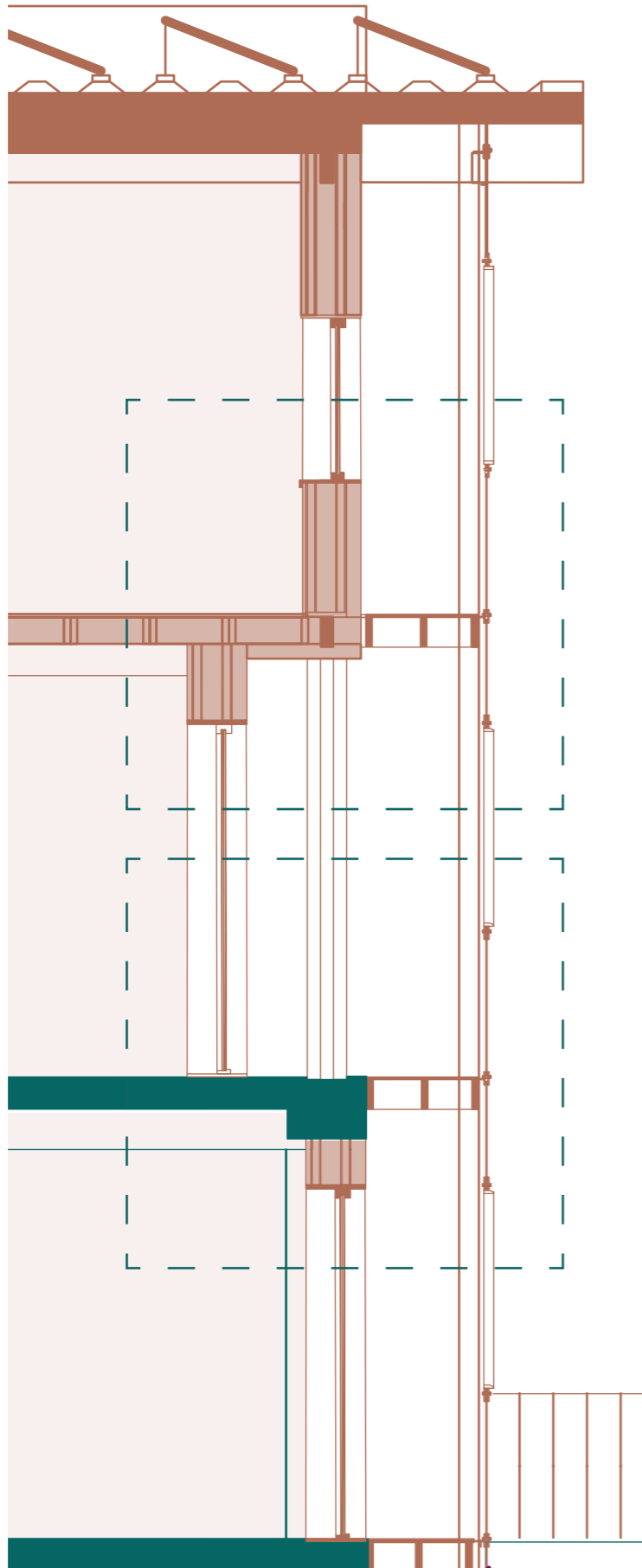


Typical Level 2 + 3 Residential Unit Plan
1 - 50



Variation of Residential Unit Plan Level 4 - 6

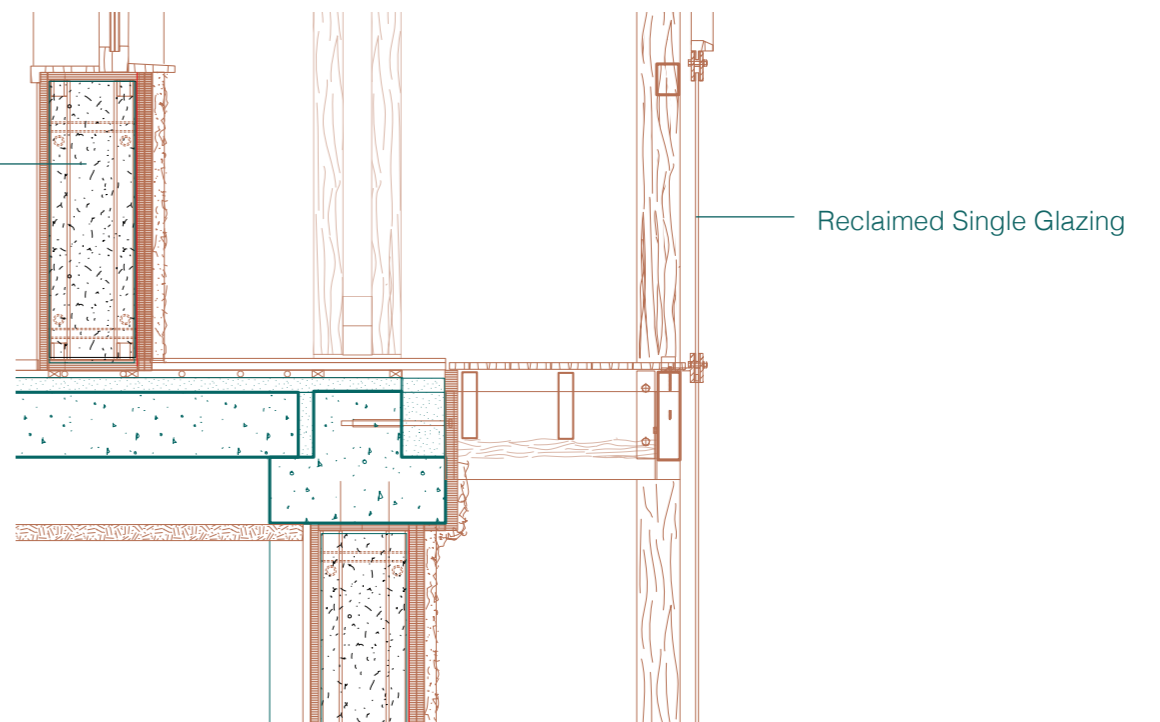
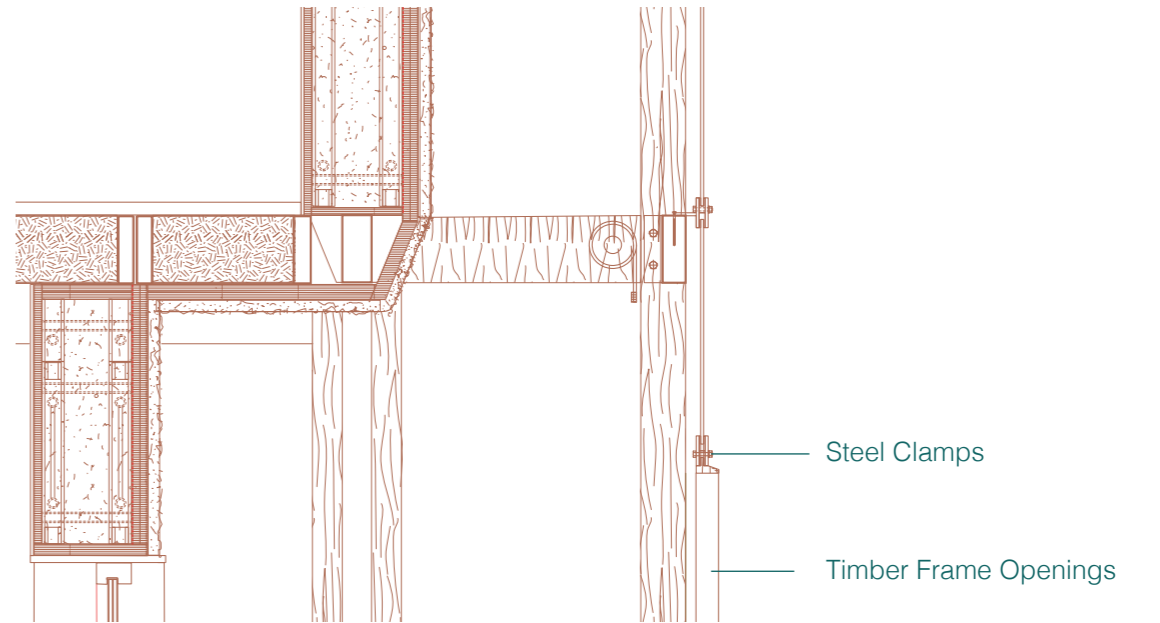


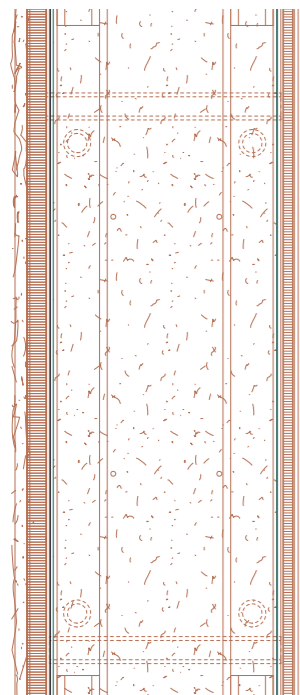


Paper and Straw Wall

R- Value = 5.8 m²/WK

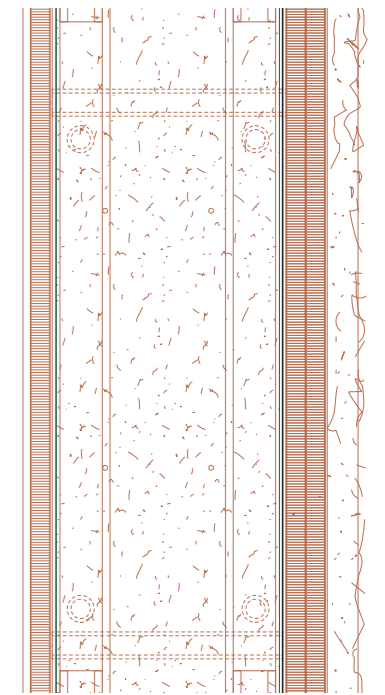
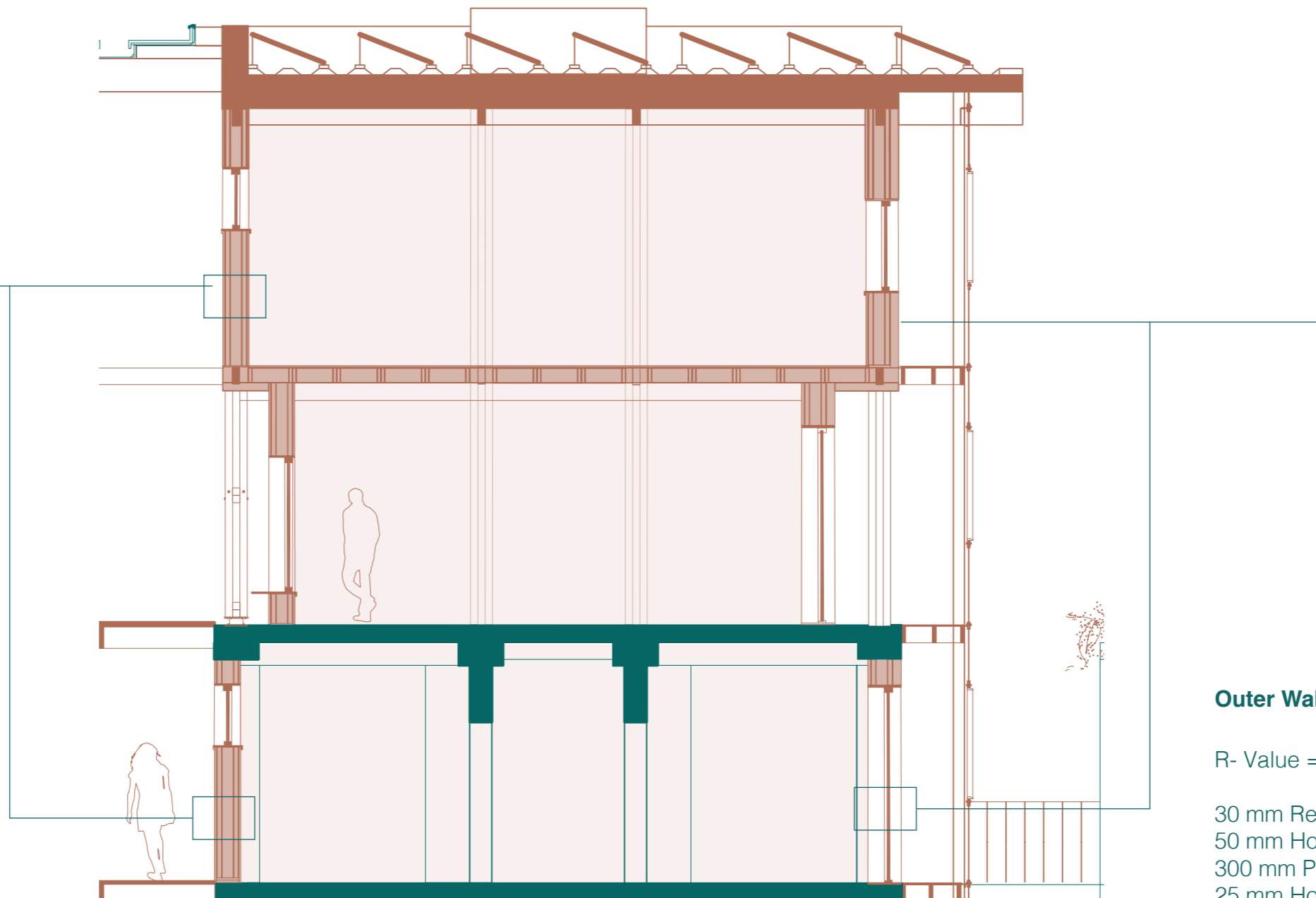
- 30 mm Reed Matt with Clay Plaster
- 50 mm Honeycomb Board
- 300 mm Paper + Straw Panel
- 25 mm Honeycomb Cardboard
- 10 mm Pressed Organic Board/Clay Plaster





Inner Wall Build Up: 340 mm Thick

- 10 mm Pressed Organic Board/Clay Plaster
- 15 mm Honeycomb
- 300 mm Paper and Straw Panel
- 15 mm Honeycomb
- 10 mm Pressed Organic Board/Clay Plaster



Outer Wall Build Up: 415 mm Thick

R- Value = 5.8 m²/WK

- 30 mm Reed Matt with Clay Plaster
- 50 mm Honeycomb Board
- 300 mm Paper + Straw Panel
- 25 mm Honeycomb Cardboard
- 10 mm Pressed Organic Board/Clay Plaster