

Document Version

Final published version

Licence

CC BY-NC-ND

Citation (APA)

Ghanipoor, F., Murguia, C., Esfahani, P. M., & van de Wouw, N. (2023). Linear Fault Estimators for Nonlinear Systems: An Ultra-Local Model Design. *IFAC-PapersOnLine*, 56(2), 11693-11698. <https://doi.org/10.1016/j.ifacol.2023.10.526>

Important note

To cite this publication, please use the final published version (if applicable).
Please check the document version above.

Copyright

In case the licence states "Dutch Copyright Act (Article 25fa)", this publication was made available Green Open Access via the TU Delft Institutional Repository pursuant to Dutch Copyright Act (Article 25fa, the Taverne amendment). This provision does not affect copyright ownership.
Unless copyright is transferred by contract or statute, it remains with the copyright holder.

Sharing and reuse

Other than for strictly personal use, it is not permitted to download, forward or distribute the text or part of it, without the consent of the author(s) and/or copyright holder(s), unless the work is under an open content license such as Creative Commons.

Takedown policy

Please contact us and provide details if you believe this document breaches copyrights.
We will remove access to the work immediately and investigate your claim.

Linear Fault Estimators for Nonlinear Systems: An Ultra-Local Model Design^{*}

Farhad Ghanipoor^{*} Carlos Murguia^{*}
Peyman Mohajerin Esfahani^{**} Nathan van de Wouw^{*}

^{*} *Mechanical Engineering Department, Eindhoven University of Technology, Eindhoven, The Netherlands (e-mails: f.ghanipoor@tue.nl, C.G.Murguia@tue.nl, and N.v.d.Wouw@tue.nl).*

^{**} *Delft Center for Systems and Control, Delft University of Technology, Delft, The Netherlands (e-mail: P.MohajerinEsfahani@tudelft.nl).*

Abstract: This paper addresses the problem of robust process and sensor fault reconstruction for nonlinear systems. The proposed method augments the system dynamics with an approximated internal linear model of the combined contribution of *known* nonlinearities and *unknown* faults – leading to an approximated linear model in the augmented state. We exploit the broad modeling power of ultra-local models to characterize this internal dynamics. We use a linear filter to reconstruct the augmented state (simultaneously estimating the state of the original system and the sum of nonlinearities and faults). Having this combined estimate, we can simply subtract the analytic expression of nonlinearities from that of the corresponding estimate to reconstruct the fault vector. Because the nonlinearity does not play a role in the filter dynamics (it is only used as a static nonlinear output to estimate the fault), we can avoid standard restrictive assumptions like globally (one-sided) Lipschitz nonlinearities and/or the need for Lipschitz constants to carry out the filter design. The filter synthesis is posed as a mixed H_2/H_∞ optimization problem where the effect of disturbances and model mismatches is minimized in the H_∞ sense, for an acceptable H_2 performance with respect to measurement noise.

Copyright © 2023 The Authors. This is an open access article under the CC BY-NC-ND license (<https://creativecommons.org/licenses/by-nc-nd/4.0/>)

Keywords: Fault estimation for nonlinear systems; Observer-based approach; Mixed H_2/H_∞ ;

1. INTRODUCTION

Predictive maintenance is a vital technology that guarantees the reliable operation of high-tech industrial systems. A fundamental element for predictive maintenance is fault estimation (for severity assessment) Ghanipoor et al. (2022). If we have an accurate estimate of the fault effect in the system, we can predict the magnitude of the slowly increasing fault signal and schedule predictive maintenance actions accordingly. Many fault estimation methods have been developed for linear dynamical systems (see, e.g., Liu and Shi (2013); Liu et al. (2012) for results on linear stochastic and switching systems). However, most engineered systems (e.g., robotics, power/water networks, transportation, and manufacturing) are highly nonlinear in nature. Methods for nonlinear systems are still under development, see, e.g., Mohajerin Esfahani and Lygeros (2015), De Persis and Isidori (2001), Pan et al. (2021), Lan and Patton (2020), and Jiang et al. (2006). In Jiang et al. (2006), the authors address the problem for nonlinear systems with uniformly Lipschitz nonlinearities, process faults only (i.e., no sensor faults), and assume the so-called matching condition (the rank of the fault distribution matrix is invariant under left multiplication by the output matrix) is satisfied. An adaptive filter is introduced

that approximately reconstructs the actuator fault vector in this configuration. Although the matching condition makes the problem tractable, it significantly reduces the class of systems that can benefit from the results. In Vo et al. (2021), using Nonlinear Unknown Input Observers (NUIO), adaptive Radial Basis Function Neural Networks (RBFNN), and assuming the matching condition, a fault reconstruction scheme is provided for both sensor and process faults. The authors prove the bounded fault estimation errors of the provided scheme.

In Zhu et al. (2015), the requirement for matching condition is relaxed. The authors consider simultaneous sensor and process faults, Lipschitz nonlinearities, and use a standard fault observability condition for the linear part of the dynamics, Hou and Patton (1998). The problem is addressed through the concept of intermediate observers, which involve two specialized observers: one that estimates the fault and the other the state. Their scheme guarantees bounded fault estimation errors. In Van der Ploeg et al. (2022), simultaneous additive and multiplicative process faults are considered in the scope of discrete-time system models. Herein, the fault estimation problem is addressed by decoupling process nonlinearities and disturbances from the estimation filter dynamics and using regression techniques to approximately estimate fault signals. Linear filters can be obtained by this decoupling nonlinearities, allowing linear techniques to reconstruct fault signals.

^{*} This publication is part of the project Digital Twin project 4.3 with project number P18-03 of the research programme Perspectief which is (mainly) financed by the Dutch Research Council (NWO).

Nonetheless, the system dynamics are subject to stringent conditions due to decoupling conditions, resulting in limited practicality of these findings.

It should be noted that the results discussed above regarding nonlinear systems provide only an *approximate* reconstruction of fault vectors. This means that they guarantee bounded estimation errors, which, if within a certain range, can still provide a reliable estimate of the actual fault. The absence of internal models for fault signals creates a difficulty in achieving perfect fault estimation with zero errors. In Ghanipoor et al. (2022), an internal model for the fault vector is used, and this allows to guarantee zero error in the absence of external disturbances and noise for some classes of faults. However, this solution only applies to systems with globally Lipschitz nonlinearities and the effect of measurement noise and exogenous disturbances is not addressed.

Considering the discussed literature, the main contribution of this manuscript is a fault estimation scheme for process and sensor faults that *does not require* globally Lipschitz nonlinearities, known Lipschitz constants, and the matching condition. This scheme augments the system dynamics with an approximated internal linear model of the combined contribution of *known* nonlinearities and *unknown* faults – leading to an approximated linear model in the augmented state. We exploit the broad modeling power of *ultra-local models*, see Fliess and Join (2013) and Sira-Ramírez et al. (2018) – which refers to a class of phenomenological models that are only valid for very short time intervals – to characterize this internal dynamics. We use a linear filter to reconstruct the augmented state (simultaneously estimating the state of the original system and the sum of nonlinearities and faults). If this estimate is sufficiently accurate, we can simply subtract the analytic expression of nonlinearities from that of the corresponding estimate to reconstruct the fault vector. Because the nonlinearity does not play a role in the filter dynamics (it is only used as a static nonlinear output to estimate the fault), we can avoid standard restrictive assumptions like globally (one-sided) Lipschitz nonlinearities and/or the need of Lipschitz constants to carry out the filter design. The filter synthesis is posed as a mixed H_2/H_∞ semi-definite program where the effect of exogenous disturbances and the mismatch between ultra-local models and true internal dynamics is minimized in the H_∞ sense, for an acceptable H_2 performance with respect to measurement noise.

Notation: The symbol \mathbb{R}^+ denotes the set of nonnegative real numbers. The $n \times n$ identity matrix is denoted by I_n or simply I if n is clear from the context. Similarly, $n \times m$ matrices composed of only zeros are denoted by $\mathbf{0}_{n \times m}$ or simply $\mathbf{0}$ when their dimensions are clear. For positive definite (semi-definite) matrices, we use the notation $P \succ 0$ ($P \succeq 0$). For negative definite (semi-definite) matrices, we use the notation $P \prec 0$ ($P \preceq 0$). The notation $\text{col}[x_1, \dots, x_n]$ stands for the column vector composed of the elements x_1, \dots, x_n . This notation is also used when the components x_i are vectors. The ℓ_2 vector norm (Euclidean norm) and the matrix norm induced by the ℓ_2 vector norm are both denoted as $\|\cdot\|$. For a vector-valued signal $f(t)$ defined for all $t \geq 0$, $\|f(t)\|_\infty := \sup_{t \geq 0} \|f(t)\|$.

For a differentiable function $W : \mathbb{R}^n \rightarrow \mathbb{R}$ we denote by $\frac{\partial W}{\partial e}$ the row-vector of partial derivatives and by $\dot{W}(e)$ the total derivative of $W(e)$ with respect to time. For the transfer function $T(s)$, $\sigma_{\max}(T(s))$ shows the maximum singular value, and $T^H(s)$ the Hermitian transpose. We often omit time dependencies for notation simplicity.

2. PROBLEM FORMULATION

Consider the nonlinear system

$$\begin{cases} \dot{x} = Ax + Bu + Sg(Vx, u, t) + D\omega + F_x f_x(x, u, t), \\ y = Cx + F_y f_y(x, t) + \nu, \end{cases} \quad (1)$$

where $t \in \mathbb{R}^+$, $x \in \mathbb{R}^n$, $y \in \mathbb{R}^m$, and $u \in \mathbb{R}^l$ are time, state, measured output, and known input vectors, respectively. Function $g : \mathbb{R}^{n_v} \times \mathbb{R}^l \times \mathbb{R}^+ \rightarrow \mathbb{R}^{n_g}$ is a nonlinear *known* vector field. Vectors $\omega : \mathbb{R}^+ \rightarrow \mathbb{R}^{n_d}$ and $\nu : \mathbb{R}^+ \rightarrow \mathbb{R}^m$ are unknown bounded external disturbances and measurement noise, respectively. Functions $f_x : \mathbb{R}^n \times \mathbb{R}^l \times \mathbb{R}^+ \rightarrow \mathbb{R}^{n_{f_x}}$ and $f_y : \mathbb{R}^n \times \mathbb{R}^+ \rightarrow \mathbb{R}^{n_{f_y}}$ denote *unknown* process and sensor fault vectors, respectively. Matrices $(A, B, S, V, C, F_x, F_y)$ are of appropriate dimensions and $n, m, l, n_g, n_v, n_d, n_{f_x}, n_{f_y} \in \mathbb{N}$. We use matrix S to indicate in what equations the nonlinearity $g(Vx, u, t)$ appears explicitly, and V is used to specify which states play a role in the known nonlinearity. Matrices F_x and F_y denote process and sensor fault distribution matrices, respectively.

Let S^\dagger denote the Moore-Penrose pseudo-inverse of matrix S , and define $Q_1 R_1 := S^\dagger F_x$ and $Q_2 R_2 := (I - SS^\dagger)F_x$, where Q_i (R_i) denotes a full column (row) rank matrix of appropriate dimensions, $i = 1, 2$. Note that this factorization always exists (rank decomposition). Then, we can rewrite the nonlinear system in (1) as follows:

$$\begin{cases} \dot{x} = Ax + Bu + S(g(Vx, u, t) + Q_1 f_n(x, u, t)) \\ \quad + Q_2 f_l(x, u, t) + D\omega, \\ y = Cx + F_y f_y(x, t) + \nu, \end{cases} \quad (2a)$$

$$\begin{cases} f_n := R_1 f_x, \\ f_l := R_2 f_x. \end{cases} \quad (2b)$$

This transformation does not lead to loss of generality and will play an instrumental role to the fault estimation algorithm that we propose.

Assumption 1. (State and Input Boundedness) The state variable x and the input u remain bounded in some compact region of interest $\mathcal{D} = \mathcal{D}_x \times \mathcal{D}_u \subset \mathbb{R}^n \times \mathbb{R}^l$, before and after the occurrence of a fault.

Assumption 2. (C^r Fault and Nonlinearity) Vectors $g(Vx, u, t) + Q_1 f_n(x, u, t)$, $f_l(x, u, t)$, and $f_y(x, t)$ are r times differentiable with respect to t , and their r -th derivative is uniformly bounded.

Assumption 3. (C^1 Measurement Noise) The measurement noise vector $\nu(t)$ in (1) is bounded uniformly in t and differentiable, i.e., the total derivative with respect to time $\dot{\nu}(t)$ exists, is continuous, and bounded uniformly in t .

2.1 Ultra Local Model

Define the functions $\beta_1(x, u, t) := g(Vx, u, t) + Q_1 f_n(x, u, t)$, $\beta_2(x, u, t) := f_l(x, u, t)$, and $\beta_3(x, t) := f_y(x, t)$. We re-

fer to these $\beta_k(t)$ as the (fault-induced) lumped disturbances. Under Assumption 2, using the notion of ultra-local models, Fliess and Join (2013), we can write linear approximated internal models of $\beta_k(t)$. Consider the approximated model:

$$\begin{cases} \dot{\zeta}_{j_k}(t) = \zeta_{(j+1)_k}(t), & j_k \in \{1, \dots, r_k - 1\}, \\ \dot{\zeta}_{r_k}(t) = \mathbf{0}, & k \in \{1, 2, 3\}, \\ \bar{\beta}_k(t) = \zeta_{1_k}(t), \end{cases} \quad (3)$$

where $\bar{\beta}_k(t), k \in \{1, 2, 3\}$, is an approximation of the actual $\beta_k(t)$ introduced above. Note that each of these models corresponds to an entry-wise r_k -th order Taylor polynomial-in-time approximation at time t of $\beta_k(t)$. The accuracy of the approximated model increases as $d\beta_k(t)/dt^{r_k}$ goes to zero (entry-wise) and it is exact for $d\beta_k(t)/dt^{r_k} = \mathbf{0}$. To design such an observer, we extend the system state, $x(t)$, with the states of the internal system (not model) for each of the lumped disturbances where we consider $\dot{\zeta}_{r_k}(t) = d\beta_k(t)/dt^{r_k}, k \in \{1, 2, 3\}$ to consider actual system of the model provided for the lumped disturbances, augment it with the system dynamics in (2). We then design a linear observer for the augmented linearized system to simultaneously estimate $x(t)$ and $\beta_k(\cdot)$. We remark that the number of the derivatives, r_k , for each of the above-mentioned models in (3) is problem-dependent, see Ghanipoor et al. (2022) for discussion on selection of r_k .

2.2 Augmented Dynamics

Define $\rho_k := \text{col}[\dot{\beta}_k, \dots, \beta_k^{(r_k-1)}], k \in \{1, 2, 3\}$ and the augmented state $x_a := \text{col}[x, \beta_1, \rho_1, \beta_2, \rho_2, \beta_3, \rho_3]$, and write the augmented linear dynamics using (2)-(3) as

$$\begin{cases} \dot{x}_a = A_a x_a + B_a u + D_a \omega_a, \\ y = C_a x_a + \nu, \end{cases} \quad (4a)$$

$$A_a := \begin{bmatrix} A & S & \mathbf{0} & Q_2 & \mathbf{0} & \mathbf{0} & \mathbf{0} \\ \mathbf{0} & \mathbf{0} & I_{d_1} & \mathbf{0} & \mathbf{0} & \mathbf{0} & \mathbf{0} \\ \mathbf{0} & \mathbf{0} & \mathbf{0} & \mathbf{0} & \mathbf{0} & \mathbf{0} & \mathbf{0} \\ \mathbf{0} & \mathbf{0} & \mathbf{0} & \mathbf{0} & I_{d_2} & \mathbf{0} & \mathbf{0} \\ \mathbf{0} & \mathbf{0} & \mathbf{0} & \mathbf{0} & \mathbf{0} & \mathbf{0} & \mathbf{0} \\ \mathbf{0} & \mathbf{0} & \mathbf{0} & \mathbf{0} & \mathbf{0} & \mathbf{0} & I_{d_3} \\ \mathbf{0} & \mathbf{0} & \mathbf{0} & \mathbf{0} & \mathbf{0} & \mathbf{0} & \mathbf{0} \end{bmatrix}, D_a := \begin{bmatrix} D & \mathbf{0} & \mathbf{0} & \mathbf{0} \\ \mathbf{0} & \mathbf{0} & \mathbf{0} & \mathbf{0} \\ \mathbf{0} & I_{d_1} & \mathbf{0} & \mathbf{0} \\ \mathbf{0} & \mathbf{0} & \mathbf{0} & \mathbf{0} \\ \mathbf{0} & \mathbf{0} & I_{d_2} & \mathbf{0} \\ \mathbf{0} & \mathbf{0} & \mathbf{0} & \mathbf{0} \\ \mathbf{0} & \mathbf{0} & \mathbf{0} & I_{d_3} \end{bmatrix}$$

$$B_a := [B^\top \ \mathbf{0}]^\top, \quad C_a := [C \ \mathbf{0} \ \mathbf{0} \ \mathbf{0} \ \mathbf{0} \ F_y \ \mathbf{0}]$$

$$\omega_a := \left[\omega(t)^\top \ \beta_1^{(r_1)}(\cdot)^\top \ \beta_2^{(r_2)}(\cdot)^\top \ \beta_3^{(r_3)}(\cdot)^\top \right]^\top \quad (4b)$$

with $d_1 = (r_1 - 1)n_g, d_2 = (r_2 - 1)n_{f_1}, n_{f_1}$ being the number of rows of R_2 in (2b) and $d_3 = (r_3 - 1)n_{f_y}$.

2.3 Linear Joint State-Fault Estimator

We propose the following linear observer to estimate the fault vector:

$$\begin{cases} \dot{z} = Nz + Gu + Ly, \\ \hat{x}_a = z - Ey, \end{cases} \quad (5a)$$

with observer state $z \in \mathbb{R}^{n_z}, n_z = n + r_1 n_g + r_2 n_{f_1} + r_3 n_{f_y}$, estimate \hat{x}_a , and matrices (N, G, L) defined as

$$\begin{cases} N := MA_a - KC_a, & M := I + EC_a, \\ G := MB_a, & L := K(I + C_a E) - MA_a E. \end{cases} \quad (5b)$$

Matrices E and K are observer gains to be designed. Note that, given \hat{x}_a , fault estimates, $\hat{f}_x(\cdot)$ and $\hat{f}_y(\cdot)$, can be constructed as follows:

$$\hat{f}_x = \begin{bmatrix} R_1 \\ R_2 \end{bmatrix}^L \begin{bmatrix} Q_1^L (\bar{C}_1 \hat{x}_a - g(V_a \hat{x}_a, u, t)) \\ \bar{C}_2 \hat{x}_a \end{bmatrix}, \quad \hat{f}_y = \bar{C}_3 \hat{x}_a, \quad (6)$$

where

$$\begin{aligned} \bar{C}_1 &:= [\mathbf{0} \ I_{n_g} \ \mathbf{0} \ \mathbf{0} \ \mathbf{0} \ \mathbf{0} \ \mathbf{0}], & \bar{C}_2 &:= [\mathbf{0} \ \mathbf{0} \ \mathbf{0} \ I_{n_{f_1}} \ \mathbf{0} \ \mathbf{0} \ \mathbf{0}], \\ \bar{C}_3 &:= [\mathbf{0} \ \mathbf{0} \ \mathbf{0} \ \mathbf{0} \ \mathbf{0} \ I_{n_{f_y}} \ \mathbf{0}], & V_a &:= [V \ \mathbf{0}], \end{aligned}$$

and $[\cdot]^L$ denotes left inverse. Note that, by construction $[R_1^\top, R_2^\top]^\top$ and Q_1^L , are full column rank; hence, they are always left invertible. Note that we assume that the fault-free system dynamics is known. Hence, the nonlinear function $g(\cdot)$, can be used to extract faults signals algebraically as in (6). Note that, according to (6), the part of the extended state, x_a , that we use to reconstruct faults is $\bar{C}_a x_a$ with

$$\bar{C}_a := [V_a^\top \ \bar{C}_1^\top \ \bar{C}_2^\top \ \bar{C}_3^\top]^\top. \quad (7)$$

That is, we mainly require the observer to provide accurate estimates $\bar{C}_a \hat{x}_a$ of $\bar{C}_a x_a$ and not of the complete state x_a . Let us now define the estimation error

$$e := \hat{x}_a - x_a = z - x_a - Ey = z - Mx_a - Ev.$$

Then, the estimation error dynamics is given by

$$\begin{aligned} \dot{e} &= Ne + (NM + LC_a - MA_a)x_a + (G - MB_a)u \\ &\quad - MD_a \omega_a + (NE + L)\nu - Ev. \end{aligned} \quad (8)$$

Given the algebraic relations in (5b), it can be verified that $G - MB_a = \mathbf{0}, NM + LC_a - MA_a = \mathbf{0}$, and $NE + L = K$. Therefore, (8) amounts to

$$\dot{e} = Ne - MD_a \omega_a + [K \ -E] \begin{bmatrix} \nu \\ \dot{\nu} \end{bmatrix}. \quad (9)$$

Define $\nu_a := \begin{bmatrix} \nu \\ \dot{\nu} \end{bmatrix}, e_d := \bar{C}_a e$ with \bar{C}_a as in (7), and

$$\bar{B} := [K \ -E]. \quad (10)$$

Then, the estimation error dynamics is given by

$$\begin{cases} \dot{e} = Ne - MD_a \omega_a + \bar{B} \nu_a, \\ e_d = \bar{C}_a e. \end{cases} \quad (11)$$

Define the transfer matrices

$$\begin{aligned} T_{e_d \omega_a}(s) &:= -\bar{C}_a (sI - N)^{-1} MD_a, \\ T_{e_d \nu_a}(s) &:= \bar{C}_a (sI - N)^{-1} \bar{B}, \end{aligned} \quad (12)$$

where $T_{e_d \omega_a}(s)$ and $T_{e_d \nu_a}(s)$ denote the corresponding transfer matrices from ω_a and ν_a , both to e_d , respectively. Now, we can state the fault reconstruction problem that we seek to address.

Problem 1. (Fault Reconstruction) Consider the nonlinear system (2) with known input and output signals, $u(t)$ and $y(t)$, and let Assumptions 1-3 be satisfied. Further, consider the approximated internal model (3), the augmented dynamics (4), and the observer (5). Design the observer gain matrices (E, K) such that:

- 1) All trajectories of the error dynamics (11) exist and are globally uniformly ultimately bounded in $t \geq 0$;
- 2) $\sup_{\mu \in \mathbb{R}^+} \sigma_{\max}(T_{e_d \omega_a}(i\mu)) < \lambda$, for some finite $\lambda > 0$, transfer matrix $T_{e_d \omega_a}(i\mu)$ in (12), and frequencies $\mu \in \mathbb{R}^+$;
- 3) $\sqrt{\frac{1}{2\pi}} \text{trace} \int_{-\infty}^{\infty} T_{e_d \nu_a}(i\mu) T_{e_d \nu_a}^H(i\mu) d\mu < \gamma$, for some finite $\gamma > 0$, transfer matrix $T_{e_d \nu_a}(i\mu)$ in (12).

Under Assumptions 1-3, The essence of Problem 1 is to finding a fault estimator that: ensure a bounded estimation error, $e(t)$; the H_∞ -norm of $T_{e_d\omega_a}(s)$, the transfer matrix from external disturbances and model mismatches to the performance output $\bar{C}_a e$ (fault and some state estimation errors) is upper bounded by λ ; the H_2 -norm of $T_{e_d\nu_a}(s)$, the transfer matrix from measurement noise to the performance output, is upper bounded by γ ; and, for $\omega_a(x, u, t) = \mathbf{0}$ and $\nu_a(t) = \mathbf{0}$, $e(t)$ goes to zero asymptotically (internal stability).

3. FAULT ESTIMATOR DESIGN

3.1 ISS Estimation Error Dynamics

This section outlines the process of deriving Linear Matrix Inequality (LMI) conditions for designing the matrices E and K of the augmented system observer (5). As a stepping stone, we provide a sufficient condition for internal stability, which ensures asymptotic stability of the origin of the estimation error dynamics when the perturbations, ω_a and ν_a , are both zero. Additionally, we prove the boundedness of the estimation error in the presence of perturbations using the concept of input-to-state stability, see Sontag (2008).

Definition 1. (Input-to-State Stability) The error dynamics (9) is said to be Input-to-State Stable (ISS) if there exist a class \mathcal{KL} function $\psi(\cdot)$ and a class \mathcal{K} function $\bar{\zeta}(\cdot)$ such that for any initial estimation error $e(t_0)$ and any bounded inputs $\omega_a(x, u, t)$ and $\nu_a(t)$, the solution $e(t)$ of (9) exists for all $t \geq t_0$ and satisfies

$$\|e(t)\| \leq \psi(\|e(t_0)\|, t - t_0) + \bar{\zeta}\left(\left\|\begin{bmatrix} \omega_a(x, u, t) \\ \nu_a(t) \end{bmatrix}\right\|_\infty\right). \quad (13)$$

We remark that ISS of the error dynamics (9) implies boundedness of the estimation error for bounded ω_a and ν_a . This follows directly from (13).

The next proposition formalizes an LMI-based condition that guarantees an ISS estimation error dynamics (9) with respect to input $[\omega_a^\top, \nu_a^\top]^\top$.

Proposition 1. (ISS Estimation Error Dynamics) Consider the error dynamics (9) and suppose there exist matrices $P \in \mathbb{R}^{n_z \times n_z}$, $P \succ 0$, $R \in \mathbb{R}^{n_z \times m}$, and $Q \in \mathbb{R}^{n_z \times m}$ satisfying the inequality

$$X + \epsilon I \preceq 0, \quad (14)$$

for some given $\epsilon > 0$ and matrix X defined as

$$X := A_a^\top P + A_a^\top C_a^\top R^\top - C_a^\top Q^\top + P A_a + R C_a A_a - Q C_a, \quad (15)$$

with A_a and C_a in (4b). Then, the estimation error dynamics in (9) is ISS with input $[\omega_a^\top, \nu_a^\top]^\top$. Moreover, the ISS-gain from $[\omega_a^\top, \nu_a^\top]^\top$ to the estimation error e in (9) is upper bounded by $2\|P[(I + E C_a)D_a - K E]\| \epsilon^{-1}$ with $E = P^{-1}R$ and $K = P^{-1}Q$.

Proof: See (Ghanipoor et al., 2022, Prop. 1). ■

Proposition 1 is employed to ensure that all trajectories of the estimation error dynamics (9) exist and are bounded for all $t \geq 0$. If the observer gains (E, K) satisfy the ISS LMI in (14), boundedness and asymptotic stability for vanishing ω_a and ν_a is guaranteed. This follows directly from Assumptions 1-3, and Definition 1.

3.2 H_∞ Performance Criteria

To enhance the performance of fault reconstruction, our aim is to minimize the impact of ω_a (treated as an external disturbance) on the estimation error dynamics (9). We could use the ISS formulation in Proposition 1 to formulate an optimization problem where we minimize the ISS gain while regarding the LMI in (14) as an optimization constraint. This approach can effectively reduce the effect of ω_a and ν_a on the complete vector of estimation errors e . However, it is essential to keep in mind that the purpose of the observer is to reconstruct faults only. Therefore, the performance of irrelevant estimation errors is not of direct concern. Accordingly, we intend to minimize the H_∞ -norm of the transfer function from ω_a to the relevant (according to (6)) estimation errors e_d as defined in (12).

Definition 2. (H_∞ -norm) The H_∞ -norm $\|T_{e_d\omega_a}\|_\infty$ of the transfer matrix $T_{e_d\omega_a}(s)$ is given by

$$\|T_{e_d\omega_a}\|_\infty := \sup_{\mu \in \mathbb{R}^+} \sigma_{\max}(T_{e_d\omega_a}(i\mu)).$$

The following proposition formalizes an LMI-based condition guaranteeing $\|T_{e_d\omega_a}\|_\infty < \lambda$, i.e., a finite H_∞ -norm of the transfer function $T_{e_d\omega_a}(s)$.

Proposition 2. (Finite H_∞ -norm) Consider the estimation error dynamics (11) with transfer matrix $T_{e_d\omega_a}(s)$ in (12). Assume there exist matrices $P \succ 0$, R , Q , and scalar $\lambda > 0$ satisfying

$$\begin{bmatrix} X & -(P + R C_a) D_a & \bar{C}_a^\top \\ * & -\lambda I & \mathbf{0} \\ * & * & -\lambda I \end{bmatrix} \prec 0, \quad (16)$$

with X defined in (15), \bar{C}_a in (7), and the remaining matrices in (4b). Then, $\|T_{e_d\omega_a}\|_\infty < \lambda$.

Proof: See (Ghanipoor et al., 2022, Prop. 2). ■

3.3 H_2 Performance Criteria

The other terms affecting the performance of the fault reconstruction are measurement noise and its derivative, collected in the vector ν_a . We seek to minimize the effect of ν_a on the estimation error dynamics (9). To this end, we seek to minimize the H_2 -norm of the transfer function from ν_a to the performance output e_d defined in (12).

Definition 3. (H_2 -norm) The H_2 -norm, $\|T_{e_d\nu_a}\|_{H_2}$, of the transfer matrix $T_{e_d\nu_a}(s)$ is given by

$$\|T_{e_d\nu_a}\|_{H_2} := \sqrt{\frac{1}{2\pi} \text{trace} \int_{-\infty}^{\infty} T_{e_d\nu_a}(i\mu) T_{e_d\nu_a}^H(i\mu) d\mu}.$$

The following proposition formalizes an LMI-based condition guaranteeing $\|T_{e_d\nu_a}\|_{H_2} < \gamma$, i.e., a finite H_2 -norm of $T_{e_d\nu_a}(s)$.

Proposition 3. (Finite H_2 -norm) Consider the estimation error dynamics (11) with transfer matrix $T_{e_d\nu_a}(s)$ in (12). Assume there exist matrices $P \succ 0$, R , Q , and scalar $\gamma > 0$ satisfying

$$\begin{bmatrix} X & [Q \ -R] \\ * & -\gamma I \end{bmatrix} \prec 0, \quad \begin{bmatrix} P & \bar{C}_a^\top \\ * & Z \end{bmatrix} \succ 0, \quad \text{trace}(Z) < \gamma, \quad (17)$$

with X defined in (15) and \bar{C}_a in (7). Then, $\|T_{e_d\nu_a}\|_{H_2} < \gamma$.

Proof: See (Ghanipoor et al., 2022, Prop. 3). ■

Using Proposition 2, we can formulate a semi-definite program where we seek to minimize the H_∞ -norm of $T_{e_d\omega_a}(s)$. Similarly, using Proposition 3, we can formulate another semi-definite program where we seek to minimize the H_2 -norm of $T_{e_d\nu_a}(s)$. However, in the presence of both unknown perturbations (ω_a and ν_a), the H_∞ -norm and H_2 -norm cannot be minimized simultaneously due to conflicting objectives. To attenuate the measurement noise effect on the estimations errors, a relatively slow observer is required, which does not react to every small change. In contrast, to reduce the effect of ω_a , a high-gain observer is preferred, which tries to estimate the fault as accurately as possible. It follows that there is a trade-off between estimation performance the noise sensitivity.

To address this trade-off, a convex program where we seek to minimize the H_∞ -norm and constrain the H_2 -norm, for the same performance output e_d , is proposed. The same tools allow minimizing the H_2 -norm for a constrained H_∞ -norm, for which we present simulation results. Moreover, we add the ISS LMI in (14) as a constraint to these programs to enforce that stability of the resulting observer.

Theorem 1. (Fault Estimator Design) Consider the augmented dynamics (4), the estimator (5), the corresponding estimation error dynamics (11), and the transfer functions (12). To design optimal mixed H_2/H_∞ fault estimators (5)-(6), solve the following convex program

$$\begin{aligned} \min_{P,R,Q,Z,\lambda,\gamma} \quad & \lambda \\ \text{s.t.} \quad & X + \epsilon I \preceq 0, \\ & \begin{bmatrix} X & -(P + RC_a)D_a & \bar{C}_a^\top \\ * & -\lambda I & \mathbf{0} \\ * & * & -\lambda I \end{bmatrix} \prec 0, \\ & \begin{bmatrix} X & [Q \ -R] \\ * & -\gamma I \end{bmatrix} \prec 0, \quad \begin{bmatrix} P & \bar{C}_a^\top \\ * & Z \end{bmatrix} \succ 0, \quad P \succ 0, \\ & \text{trace}(Z) < \gamma, \quad \gamma \leq \gamma_{max}, \quad \lambda, \gamma > 0, \end{aligned} \quad (18)$$

with given $\epsilon, \gamma_{max} > 0$, \bar{C}_a in (7), X as defined in (15), and the remaining matrices as defined in (4b). Denote the optimizers as $P^*, R^*, Q^*, Z^*, \lambda^*, \gamma^*$ and define the matrices $E^* := P^{*-1}R^*$ and $K^* := P^{*-1}Q^*$. Then, we have the following:

- (1) The ISS-gain from inputs ω_a and ν_a to the estimation error e in (11) is upper bounded by $2\|P^*[(I + E^*C_a)D_a - K^*E^*]\|_{\epsilon^{-1}}$.
- (2) The H_∞ -norm of transfer function $T_{e_d\omega_a}(s)$ in (12) of the error dynamics (11) is upper bounded by λ^* (i.e., $\|T_{e_d\omega_a}\|_\infty < \lambda^*$).
- (3) The H_2 -norm of transfer function $T_{e_d\nu_a}(s)$ in (12) of the error dynamics (11) is upper bounded by γ^* (i.e., $\|T_{e_d\nu_a}\|_{H_2} < \gamma^*$).

Proof: Theorem 1 follows from the above discussion and Propositions 1-3. ■

4. SIMULATION RESULTS

In this section, the proposed method is evaluated by a two-link robotic manipulator with revolute joints. This system is employed as a case study due to its highly nonlinear

behavior. The Euler-Lagrange equations of motions of this system are described by two second-order coupled differential equations (one for each link), which are given as (Sira-Ramírez et al., 2018, pp. 86-88)

$$\underline{M}(q)\ddot{q} + \underline{C}(q, \dot{q})\dot{q} + \underline{G}(q) = \tau + \tau_f - \underline{D}\dot{q},$$

with

$$\underline{M}(q) = \begin{bmatrix} \underline{M}_{11} & \underline{M}_{12} \\ * & \underline{M}_{22} \end{bmatrix}, \quad \underline{D} = \begin{bmatrix} d_1 & 0 \\ 0 & d_2 \end{bmatrix}, \quad \underline{G}(q) = \begin{bmatrix} \underline{G}_1 \\ \underline{G}_2 \end{bmatrix},$$

$$\underline{C}(q, \dot{q}) = \begin{bmatrix} -2m_2l_1l_{c_2} \sin(\phi)\dot{\phi} & -m_2l_1l_{c_2} \sin(\phi)\dot{\phi} \\ m_2l_1l_{c_2} \sin(\phi)\dot{\theta} & 0 \end{bmatrix},$$

where

$$\begin{aligned} \underline{M}_{11} &= m_1l_{c_1}^2 + m_2l_1^2 + m_2l_{c_2}^2 + 2m_2l_1l_{c_2} \cos(\phi) + I_1 + I_2, \\ \underline{M}_{12} &= m_2l_{c_2}^2 + m_2l_1l_{c_2} \cos(\phi) + I_2, \quad \underline{M}_{22} = m_2l_{c_2}^2 + I_2, \\ \underline{G}_1 &= (m_1l_{c_1} + m_2l_1)g \sin(\theta) + m_2l_{c_2}g \sin(\theta + \phi), \\ \underline{G}_2 &= m_2l_{c_2}g \sin(\theta + \phi), \end{aligned}$$

and $q = [\theta \ \phi]^T$ is the generalized coordinate, $\tau = [\tau_\theta \ \tau_\phi]^T = [0.5 \sin(\frac{2\pi t}{40}) \ 0]^T$ the input, and $\tau_f = [\tau_{f_\theta} \ \tau_{f_\phi}]^T$ the actuator fault. In addition, the measurement is q , which contains the angular positions of both links. The parameters are given in (Sira-Ramírez et al., 2018, p. 92).

By selecting $x_1 := q$ and $x_2 := \dot{q}$, the system can be written directly in the form of (2) (no transformation is needed for this example) as follows

$$\begin{cases} \dot{x} = Ax + S(g(Vx, u) + f_n(x)), \\ y = Cx + \nu, \end{cases} \quad (19)$$

where $x := [x_1, x_2]^T = [q, \dot{q}]^T$ is the state vector,

$$\begin{aligned} A &= \begin{bmatrix} \mathbf{0}_{2 \times 2} & I_2 \\ \mathbf{0}_{2 \times 2} & -\underline{M}_l^{-1}\underline{D} \end{bmatrix}, \quad S = \begin{bmatrix} \mathbf{0}_{2 \times 2} \\ I_2 \end{bmatrix}, \\ C &= [I_2 \ \mathbf{0}_{2 \times 2}], \quad V = I_4, \end{aligned}$$

$$\begin{aligned} g(Vx, u) &= \underline{M}^{-1}(x_1)(u - \underline{D}x_2 - \underline{C}(x_1, x_2)x_2 - \underline{G}(x_1)) \\ &\quad + \underline{M}_l^{-1}\underline{D}x_2, \quad u = \tau, \quad f_n(x) = \underline{M}^{-1}(x_1)\tau_f, \end{aligned}$$

and $\underline{M}_l = \underline{M}(\mathbf{0})$. The measurement noise ν is generated from a uniform distribution with the maximum of 0.1 rad and the minimum of -0.1 rad, sample time of 0.1 sec, for both sensors, which is a large noise level. We have used such noise levels here to compare different above-mentioned approaches. We set the initial conditions of the system to zero. The actuator fault signal is given as

$$\tau_f(t) = \begin{cases} \tau_{f_\theta} = 0, & \text{if } t < 50, \\ \tau_{f_\phi} = 0, & \text{if } t < 50, \\ \tau_{f_\theta} = 0.2 \sin\left(\frac{2\pi}{10}(t - 50)\right), & \text{if } t \geq 50, \\ \tau_{f_\phi} = -0.05, & \text{if } t \geq 50. \end{cases}$$

Note that the nonlinear fault $f_n(x, u)$ has two fault entries; one affects the third entry and the other, the fourth entry of the manipulator dynamics. Although each actuator fault affects just one actuator, since we are estimating $f_n(x)$ and not τ_f , the occurrence of only one actuator fault causes non-zero values for both entries of $f_n(x)$.

Next, we augment the system (19) using (4) with $r = 4$. For the augmented system, the observer of the form (5) can be designed in three different ways as follows:

- (1) Only minimizing the H_∞ -norm of $T_{e_d\omega_a}(s)$ in (12) of the error system (11), subject to ISS LMI in (14).

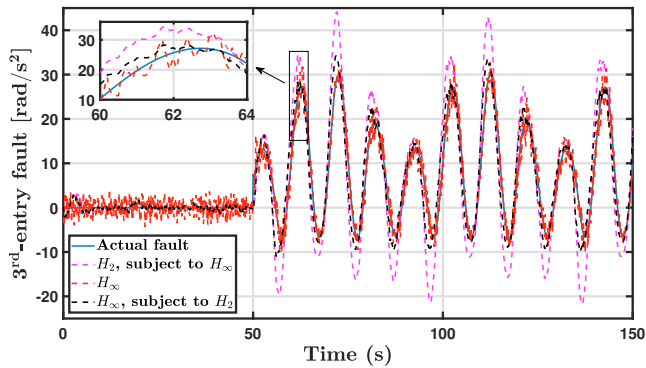


Fig. 1. The actual third entry fault and its estimates.

- (2) Minimizing the H_∞ -norm of $T_{e_d\omega_a}(s)$ in (12) of the error system (11), subject to ISS LMI in (14) and an upper bound for the H_2 -norm of transfer function $T_{e_d\nu_a}(s)$ in (12) of the error system (11) (Theorem 1).
- (3) Minimizing the H_2 -norm of transfer function $T_{e_d\nu_a}(s)$ in (12) of the error system (11), subject to ISS LMI in (14) and an upper bound for the H_∞ -norm of $T_{e_d\omega_a}(s)$ in (12) of the error system (11) (i.e., opposite of the previous one).

The designed observer is estimating the lumped disturbance and the nonlinear actuator fault estimates can be computed using (6). The initial conditions of the observers in the simulation are taken as a vector with all values equal to 0.01. Figure 1 and Figure 2 depict the estimated nonlinear faults and their actual values, using all the observers described above for the faults affecting the third and the fourth entries of the manipulator dynamics, respectively. It can be seen that only for the H_∞ -norm is minimized, although the fault estimation performance is decent, the results are too noisy. Therefore, we minimize the H_∞ and constrain the H_2 norm or the other way around (known as a mixed H_2/H_∞ approach). Herein, the fault estimation performance and the noise attenuation are always a trade-off, and the proposed synthesis approach allows us to make this trade-off in a constructive manner.

5. CONCLUSION

This paper presents a method for the robust reconstruction of time-varying faults in nonlinear systems. The numerical simulations for a two-link manipulator illustrate the performance of the proposed approach and the potential for highly nonlinear systems.

REFERENCES

- De Persis, C. and Isidori, A. (2001). A geometric approach to nonlinear fault detection and isolation. *IEEE transactions on automatic control*, 46(6), 853–865.
- Fliess, M. and Join, C. (2013). Model-free control. *International Journal of Control*, 86, 2228–2252.
- Ghanipoor, F., Murguia, C., Esfahani, P.M., and van de Wouw, N. (2022). Linear fault estimators for nonlinear systems: An ultra-local model design. *available at arXiv:2211.06214*.
- Ghanipoor, F., Murguia, C., Mohajerin Esfahani, P., and van de Wouw, N. (2022). Ultra local nonlinear unknown input observers for robust fault reconstruction. *available at arXiv:2204.01455*.

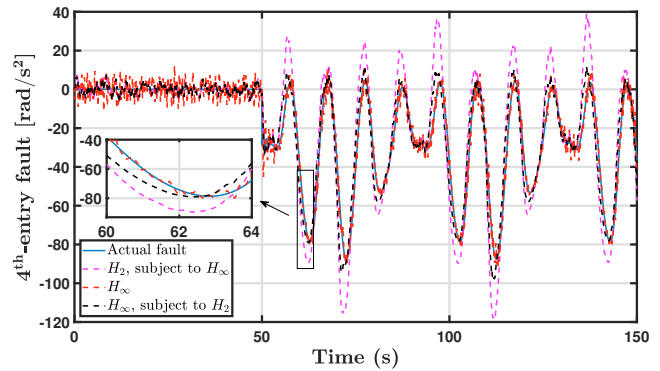


Fig. 2. The actual fourth entry fault and its estimates.

- Hou, M. and Patton, R. (1998). Input observability and input reconstruction. *Automatica*, 34, 789–794.
- Jiang, B., Staroswiecki, M., and Cocquempot, V. (2006). Fault accommodation for nonlinear dynamic systems. *IEEE Transactions on Automatic Control*, 51, 1578–1583.
- Lan, J. and Patton, R.J. (2020). *Robust integration of model-based fault estimation and fault-tolerant control*. Springer.
- Liu, M., Cao, X., and Shi, P. (2012). Fuzzy-model-based fault-tolerant design for nonlinear stochastic systems against simultaneous sensor and actuator faults. *IEEE Transactions on Fuzzy Systems*, 21(5), 789–799.
- Liu, M. and Shi, P. (2013). Sensor fault estimation and tolerant control for itô stochastic systems with a descriptor sliding mode approach. *Automatica*, 49(5), 1242–1250.
- Mohajerin Esfahani, P. and Lygeros, J. (2015). A tractable fault detection and isolation approach for nonlinear systems with probabilistic performance. *IEEE Transactions on Automatic Control*, 61(3), 633–647.
- Pan, K., Palensky, P., and Mohajerin Esfahani, P. (2021). Dynamic anomaly detection with high-fidelity simulators: A convex optimization approach. *IEEE Transactions on Smart Grid*, 13(2), 1500–1515.
- Sira-Ramírez, H., Luviano-Juárez, A., Ramírez-Neria, M., and Zurita-Bustamante, E.W. (2018). *Active disturbance rejection control of dynamic systems: a flatness based approach*. Butterworth-Heinemann.
- Sontag, E.D. (2008). Input to state stability: Basic concepts and results. In *Nonlinear and optimal control theory*, 163–220. Springer.
- Van der Ploeg, C., Alirezaei, M., Van De Wouw, N., and Mohajerin Esfahani, P. (2022). Multiple faults estimation in dynamical systems: Tractable design and performance bounds. *IEEE Transactions on Automatic Control*.
- Vo, C.P., Dao, H.V., Ahn, K.K., et al. (2021). Robust fault-tolerant control of an electro-hydraulic actuator with a novel nonlinear unknown input observer. *IEEE Access*, 9, 30750–30760.
- Zhu, J.W., Yang, G.H., Wang, H., and Wang, F. (2015). Fault estimation for a class of nonlinear systems based on intermediate estimator. *IEEE Transactions on Automatic Control*, 61(9), 2518–2524.