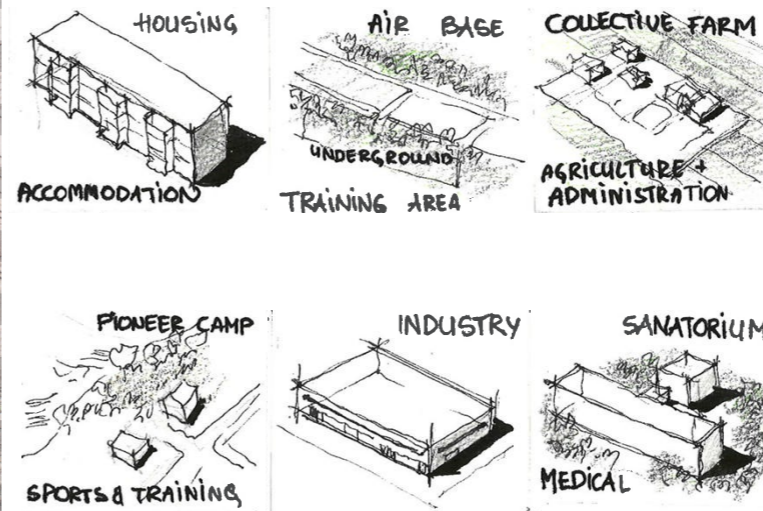


# HOW TO NOT BUILD A MILITARY BASE

and occupy an abandoned building  
for defense instead

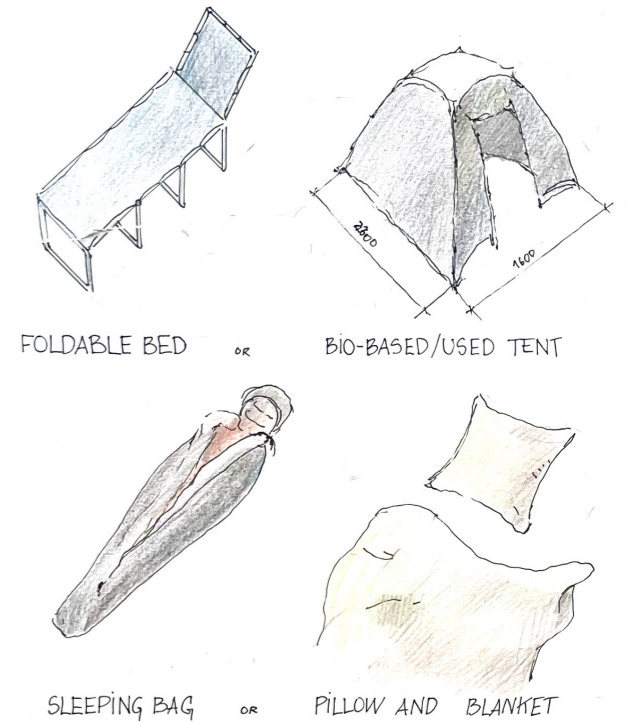
## 1. Pick an abandoned building

Soviet-era buildings often had typological projects that were used for construction. Therefore, each typology offers better reuse fit for certain functions than others. More on typologies — on the other side.



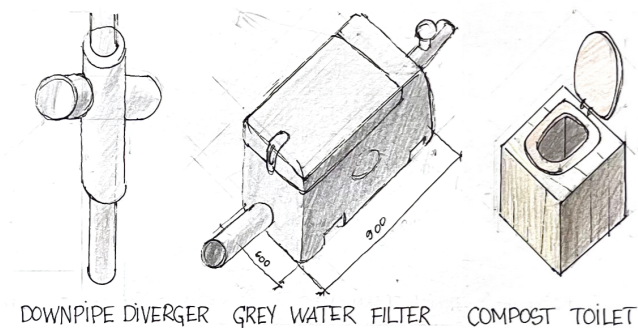
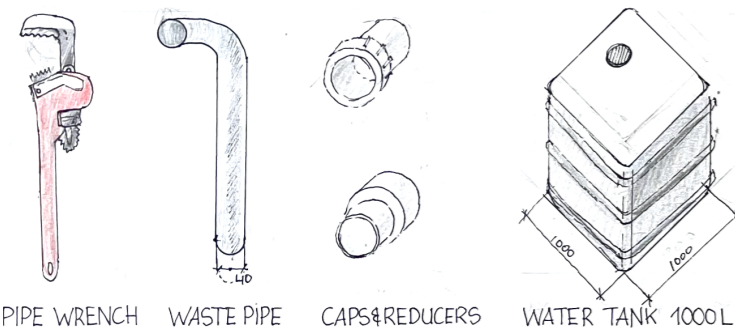
## 2. Set up a sleeping place

Choose what you need to set up a sleeping place in the building, and carry it in a backpack.



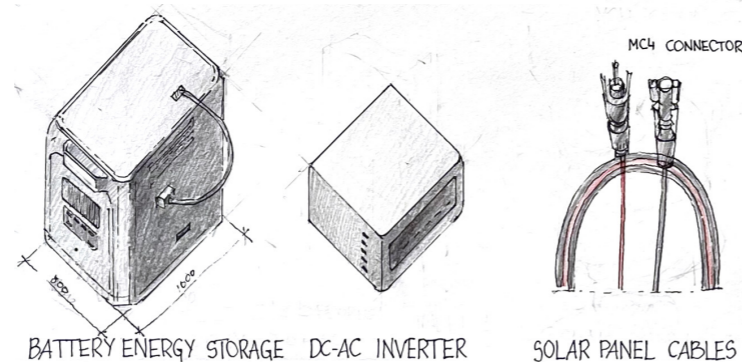
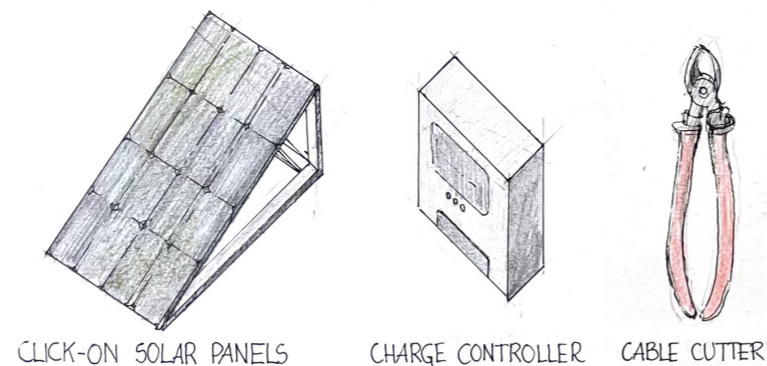
## 3. Check and connect plumbing

Check if the sewage and tap of the existing works. If yes, connect to the existing sewage system with new route for the pipes. If not, go for a compost toilet.



## 4. Connect electricity

Microgrid: Install click-on solar panels, connect it to DC-AC inverter and a charge controller. Place battery energy storage on the ground floor.



## 5. Improve comfort over time

After setting up the essentials, you can gradually improve the comfort of the building. Artight windows, bio-based insulation, new interior partitions. This way, short-term emergency occupation transforms into a long-term space of care and resilience.



## The building is now transformed

By connecting these principles with abandoned buildings and their relation to civilian protection, you can ensure the resilience both before, during and after a potential conflict.

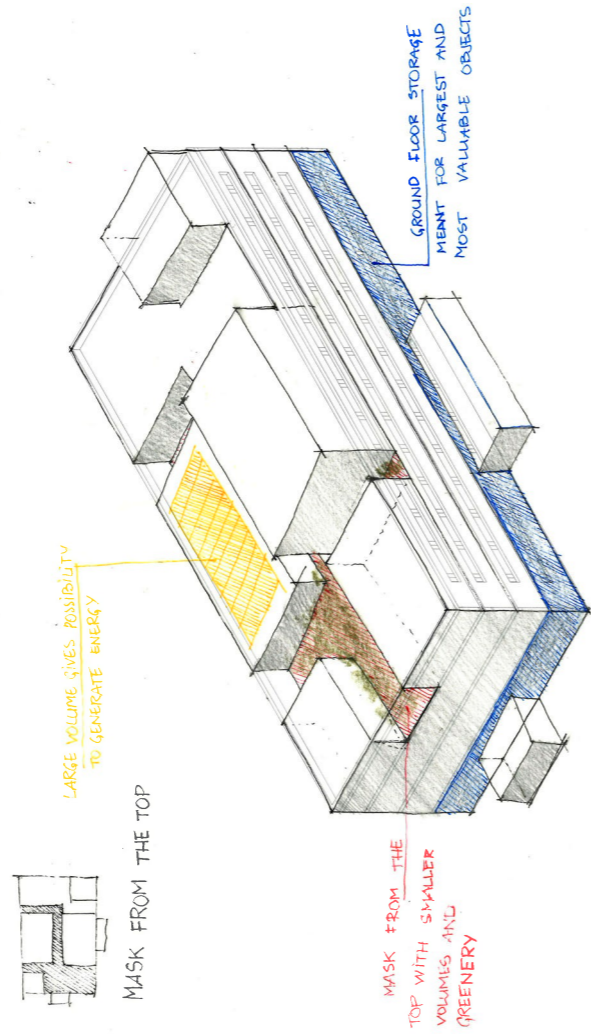
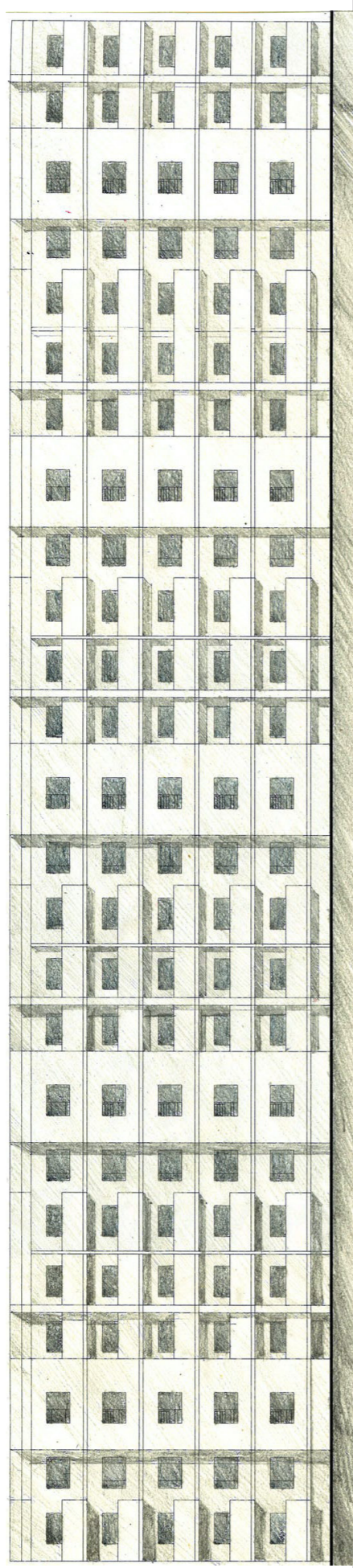
The need for protection should not equal hostility, and circularity offers a solution for care, resilience, and preparedness.

I hope you enjoyed my presentation,  
and thank you for coming.

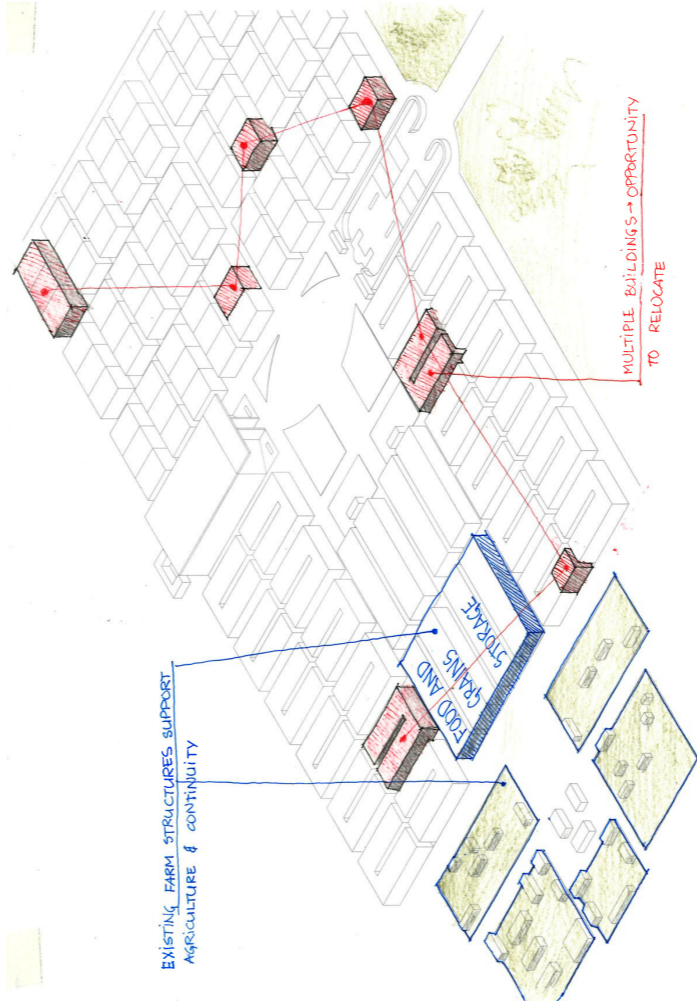
Юля

# TYOLOGIES GUIDE

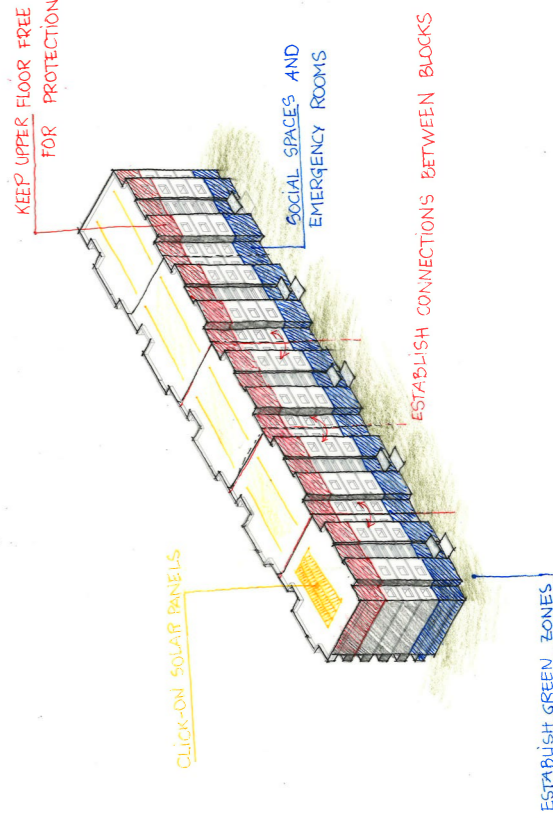
Soviet-era buildings that lie vacant after the fall of the USSR are often connected to industry that no longer takes place, or the migration from rural and semi-urban areas to the capital and abroad



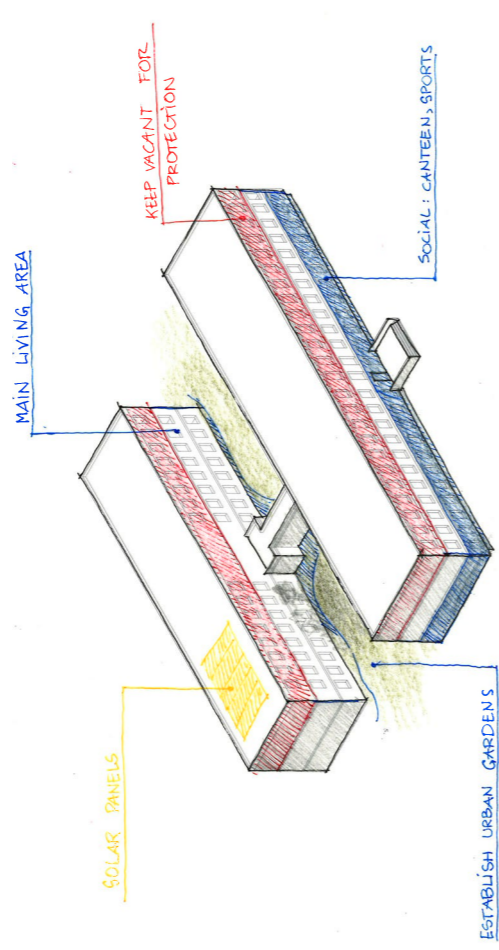
## FACTORIES INTO WAREHOUSES AND REPAIR



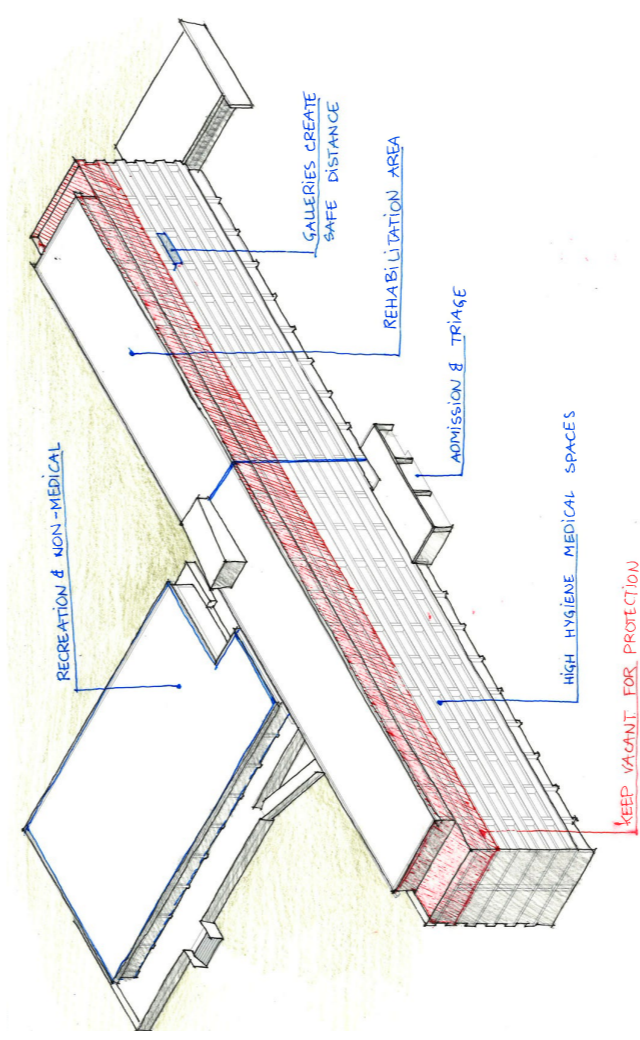
## COLLECTIVE FARMS INTO ADMINISTRATION



## KHRUSHCHEVKA INTO CIVILIAN SHELTER



## SCHOOLS INTO BARRACKS



## SANATORIUM INTO MEDICAL FUNCTION

### NOTES

Write or draw whatever you feel like :)