

Interiors Buildings Cities

Palace

2023/2024

Olga Strzałkowska

5864372

Project Book

Spaces in Between

Extension of the Stockholm City Library

Another genre, represented by J. A. G. Acke, was meant to show the analogy between the power and grace of the human body and the forms and forces of Nature. His painting Salt, Wind, and Sea reflects this formula, showing male nudes posed on rocks with crashing waves in the bright sun. A third tendency aimed to reveal how Swedish cultural rituals—particularly Midsummer’s Eve—have the unique capacity to blend sensuality and nature worship.

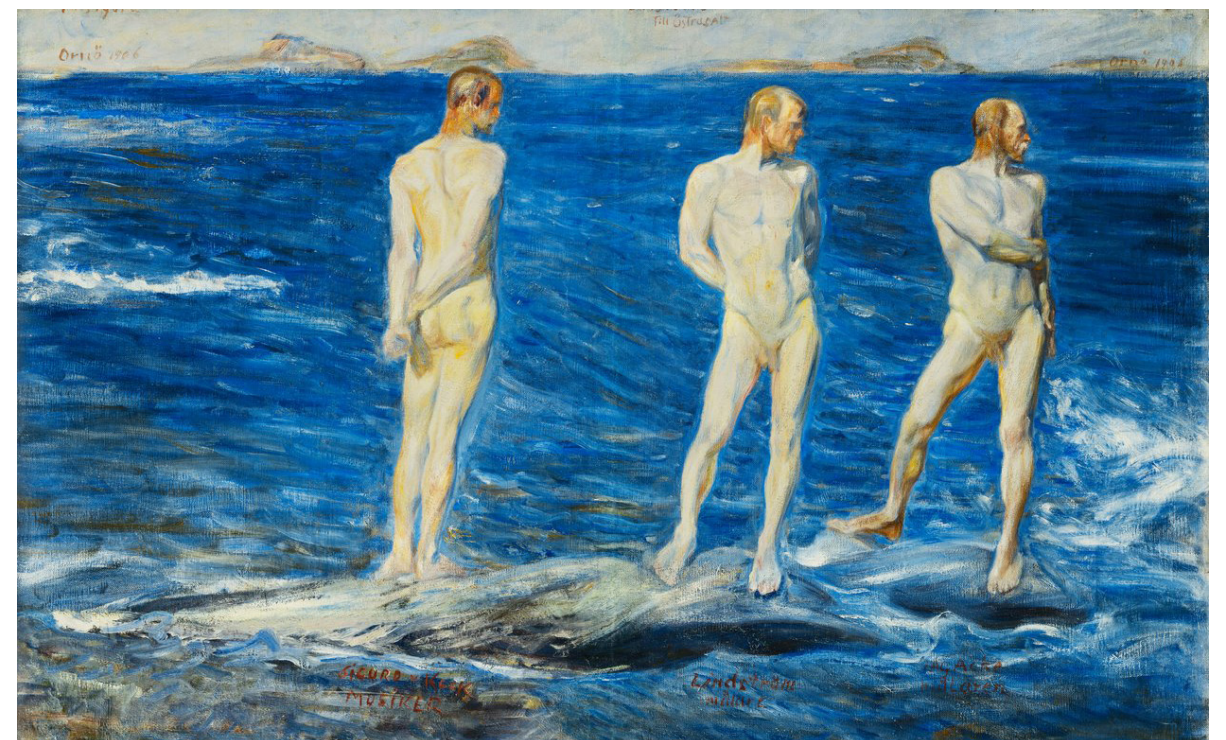
(p.47)

As a prelude to explaining this humanism, it is important to know that the Stadsbibliotek was not the first public institution in Stockholm to favor relationships with the natural world over those with the city.
(p.46)

This tendency to locate fundamental meanings in the natural world can also be found in a school of Swedish landscape painting from the late nineteenth and early twentieth centuries known as National Romanticism (...)
(p.47)

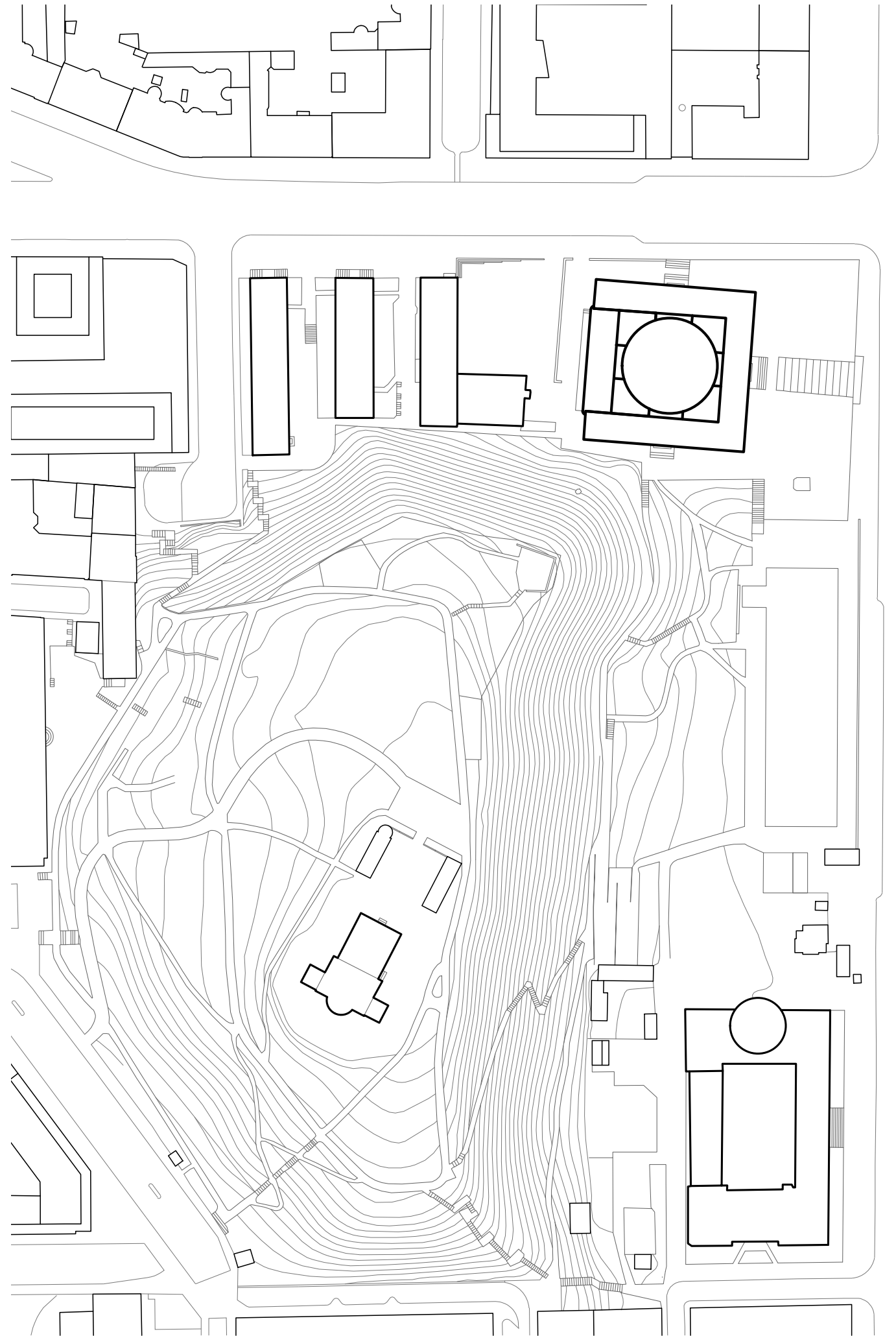
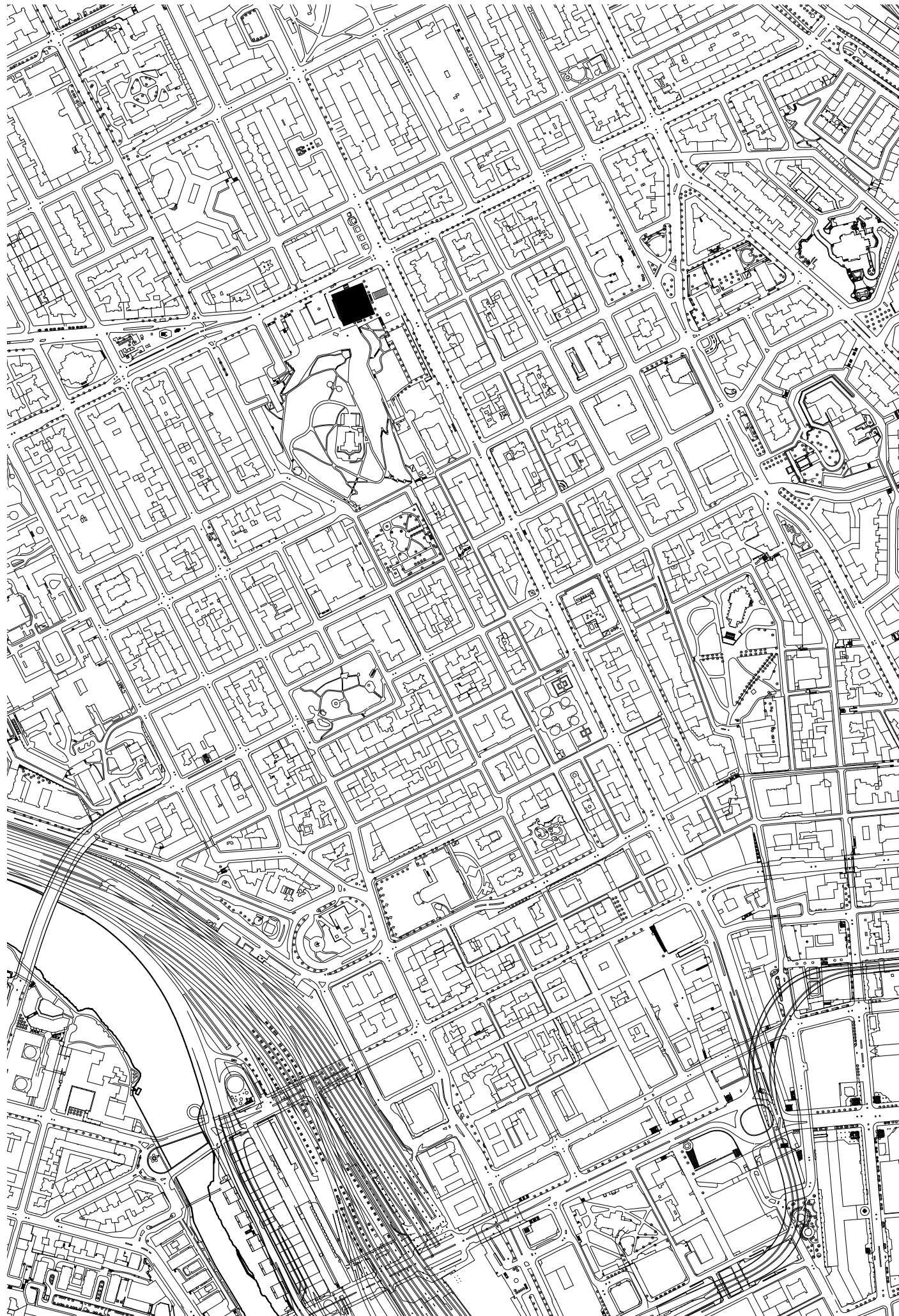
One priority was to demonstrate how natural scenes have the power to immediately evoke or reflect states of mind.
(p.47)

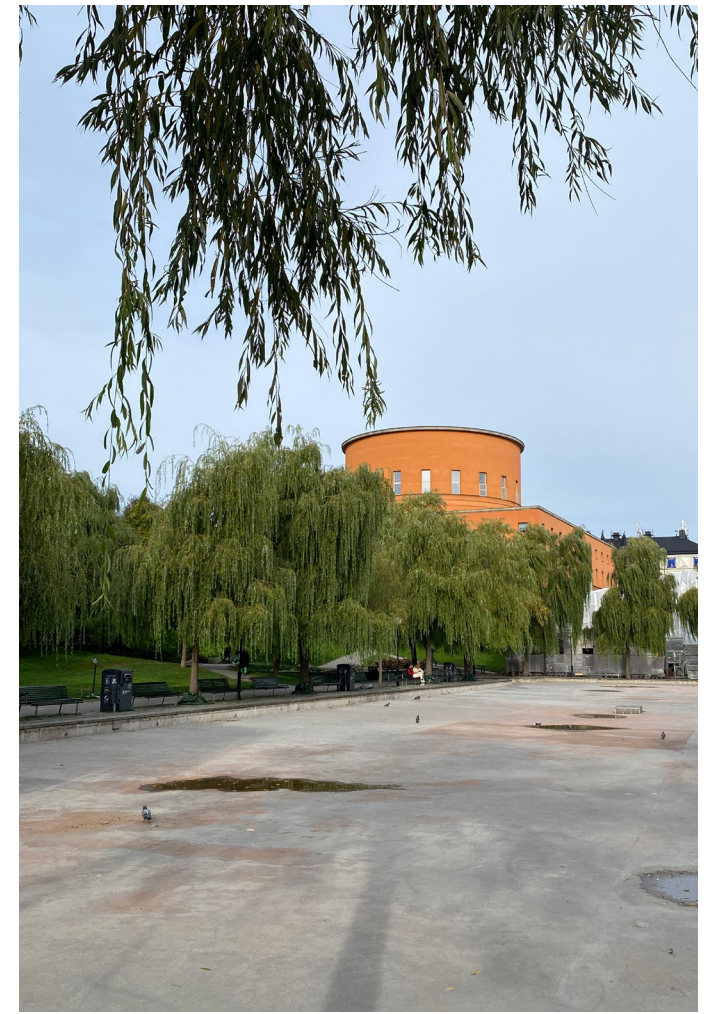
Wollen, M. Gunnar Asplund *Landscapes and Buildings*
(2019)



Salt, Wind and Sea
Johan Axel Gustav Acke
(1906)

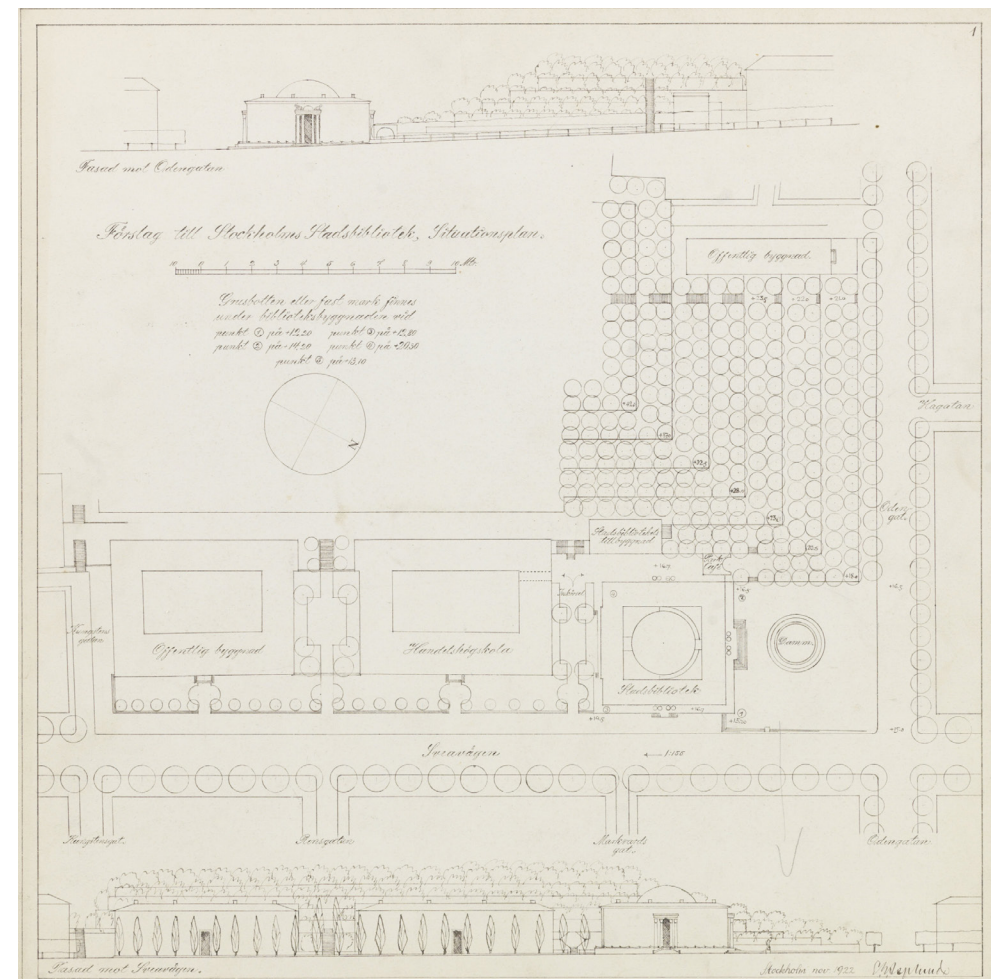
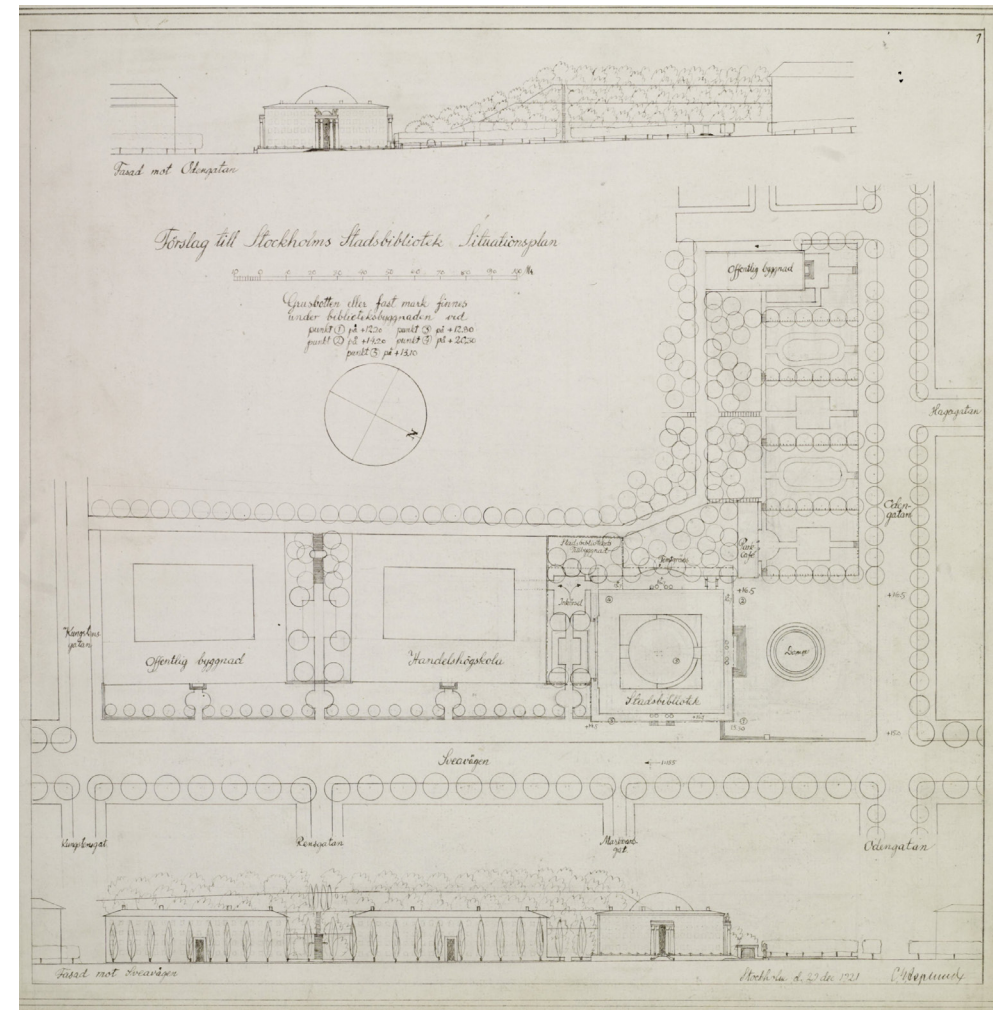
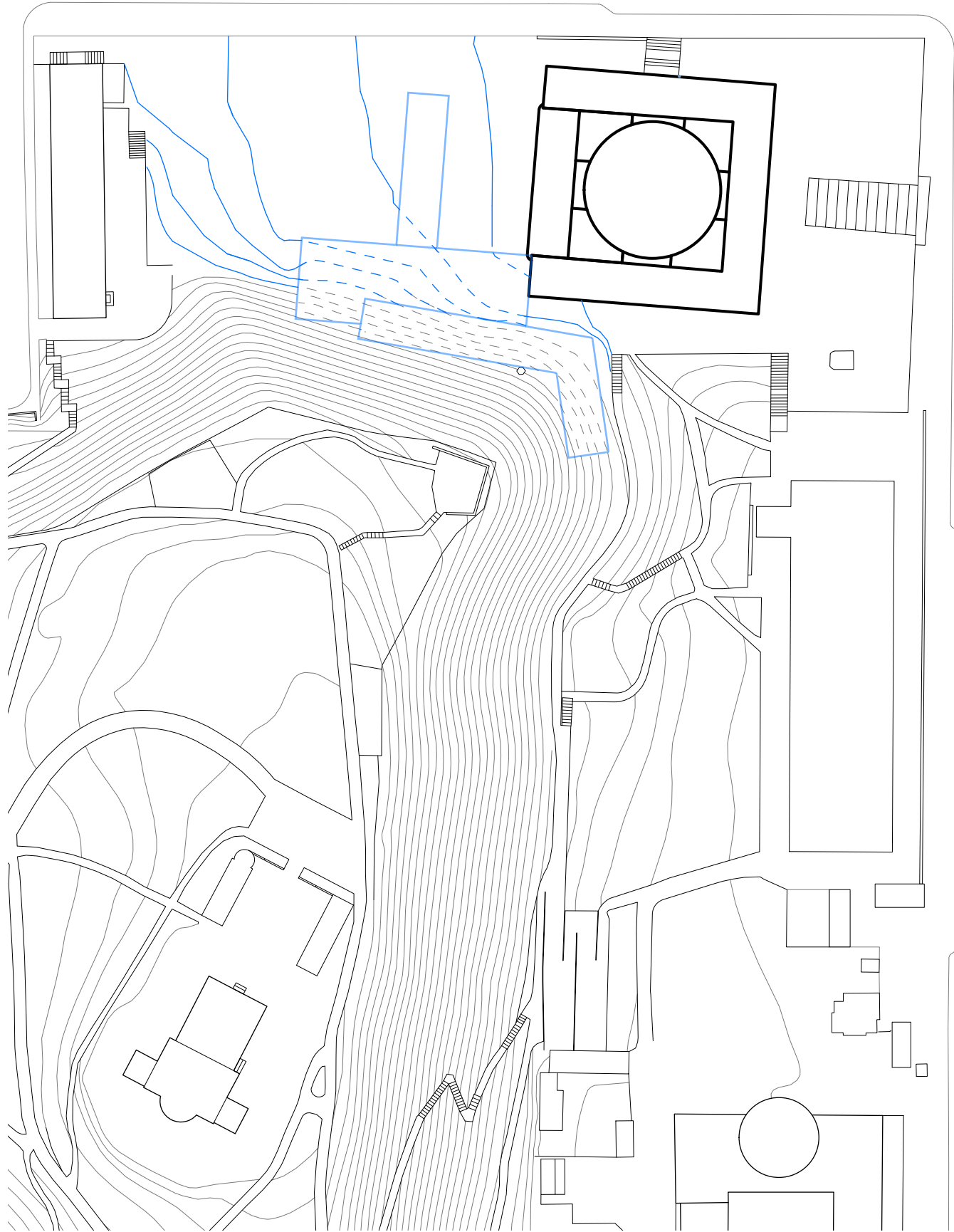
situation



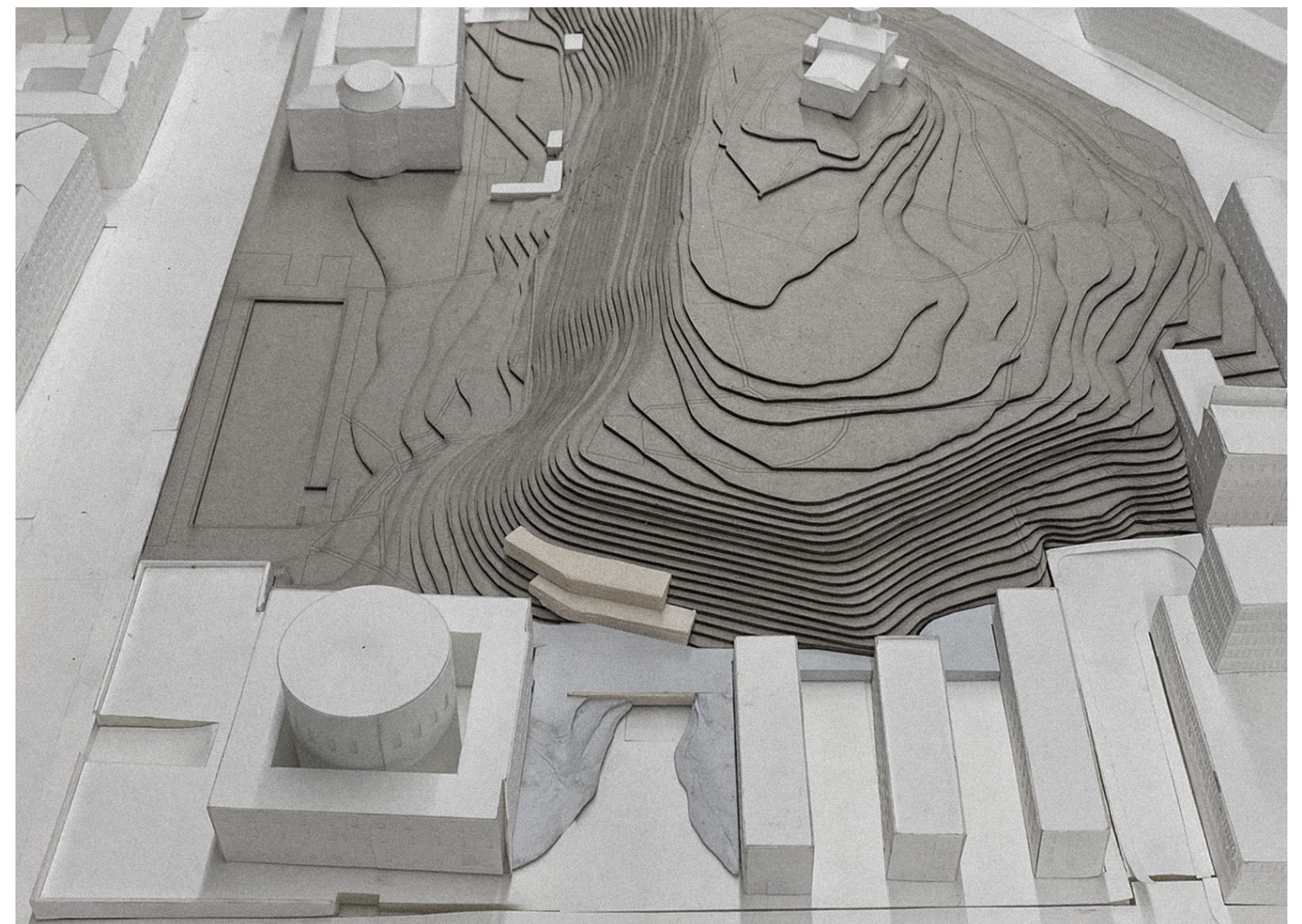
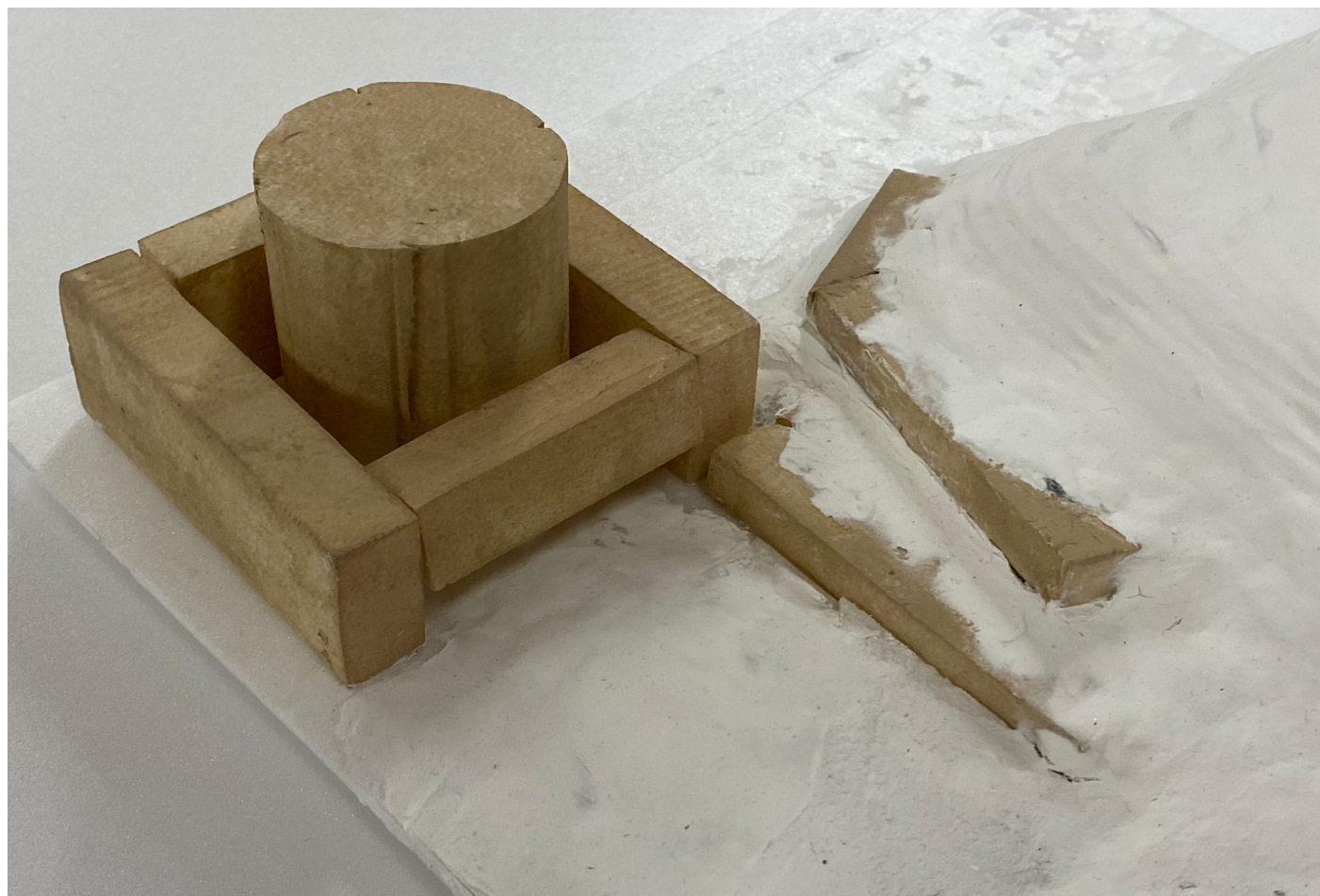
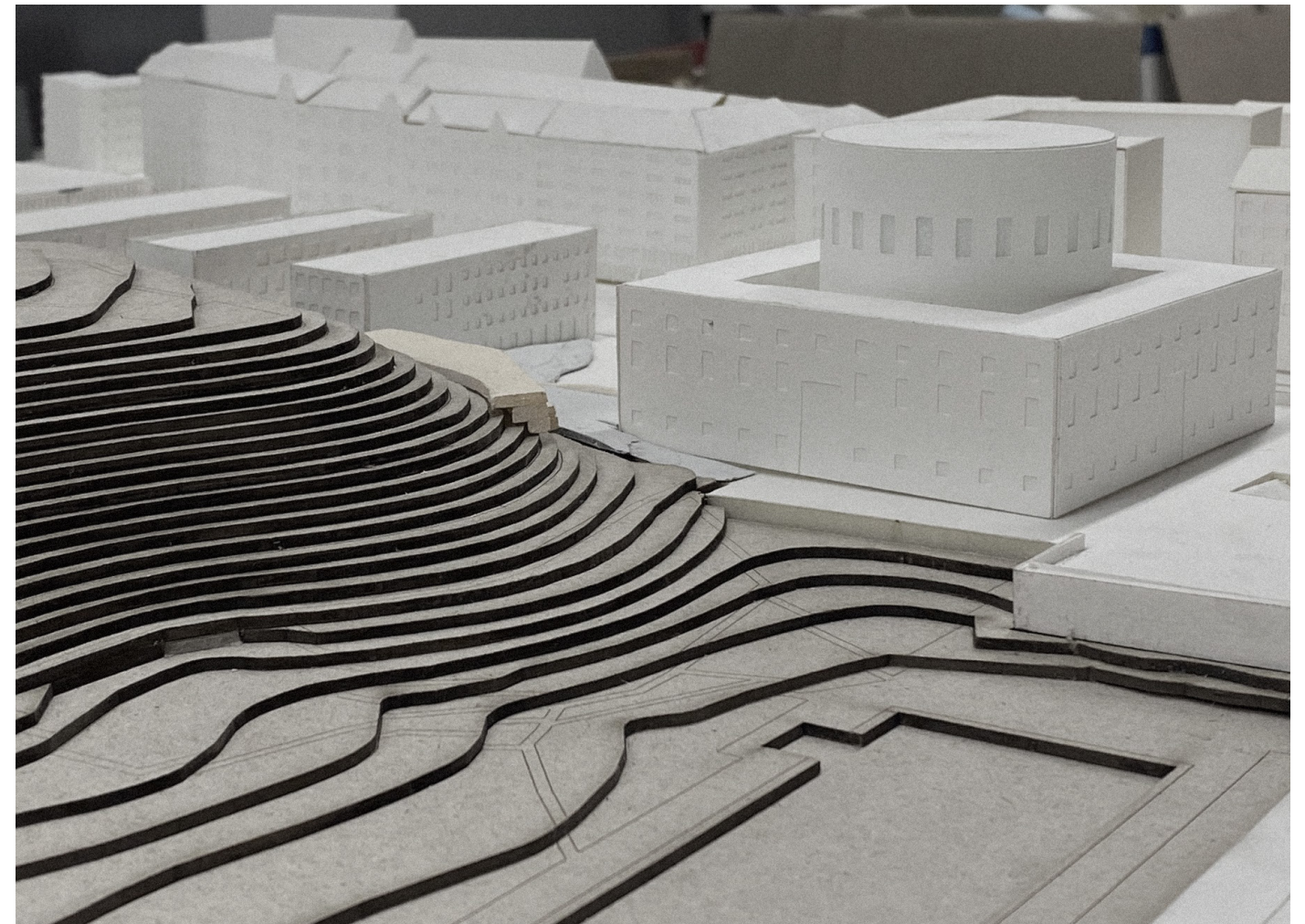


response



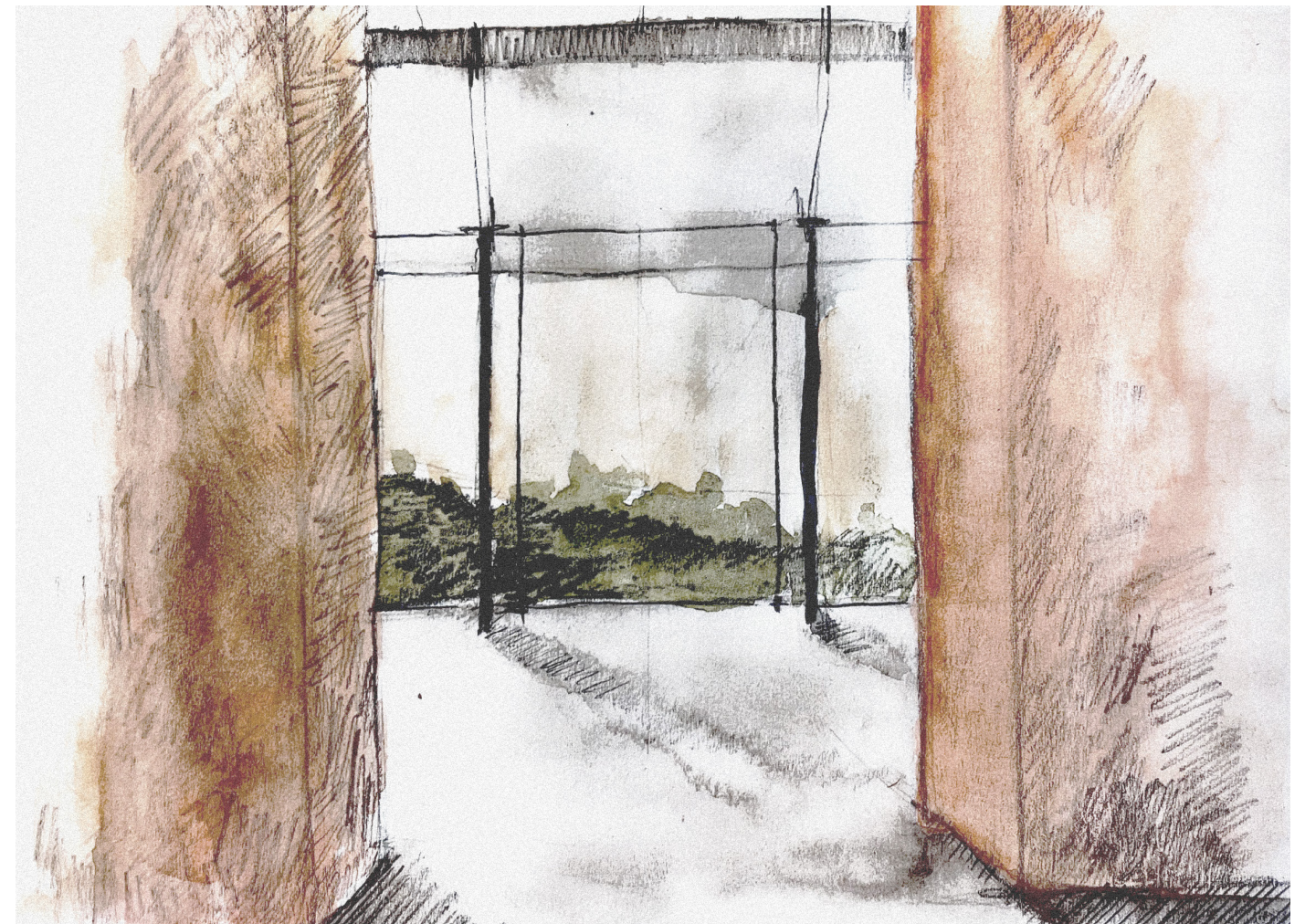


Early Sketches of Asplund

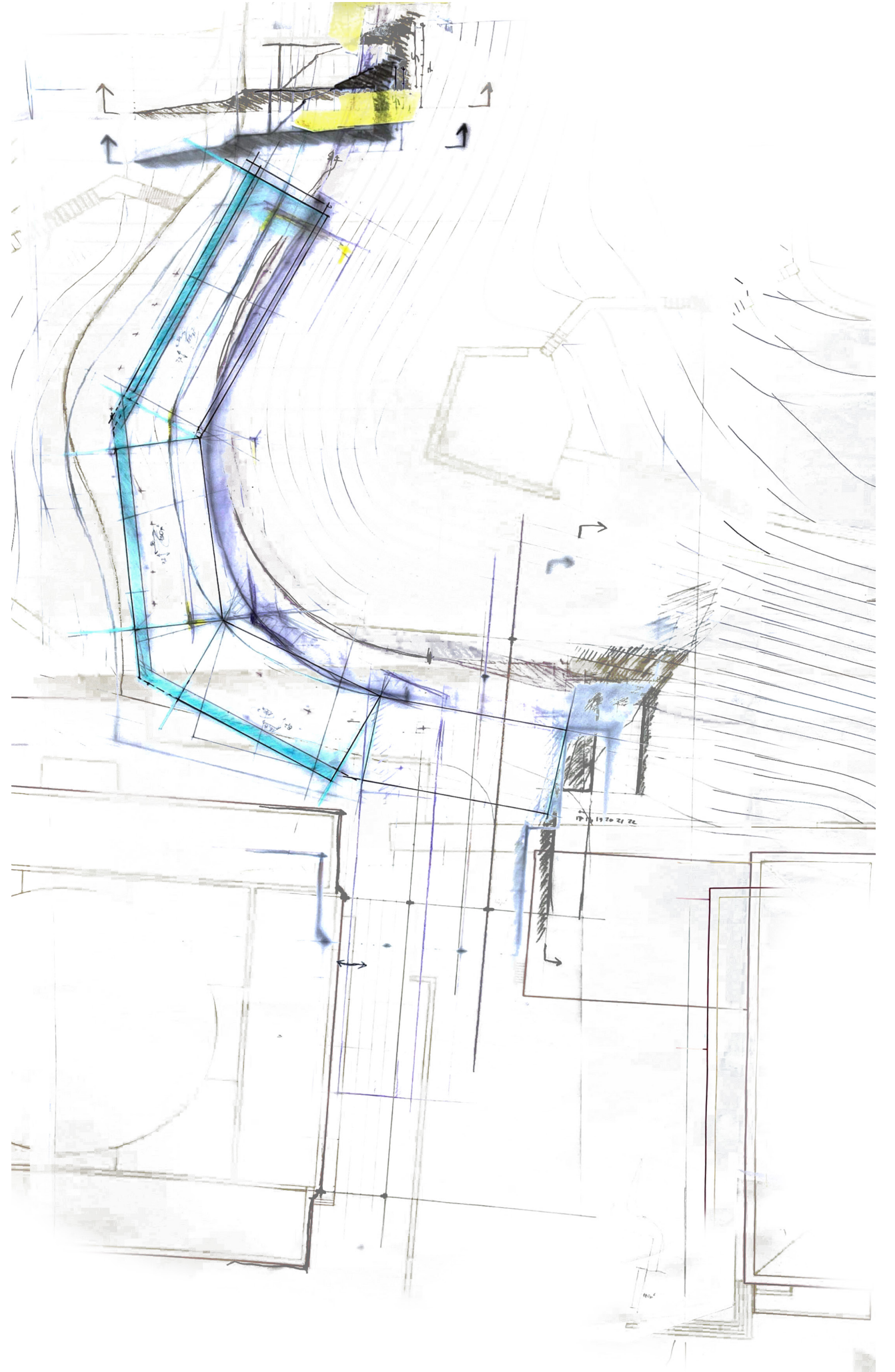


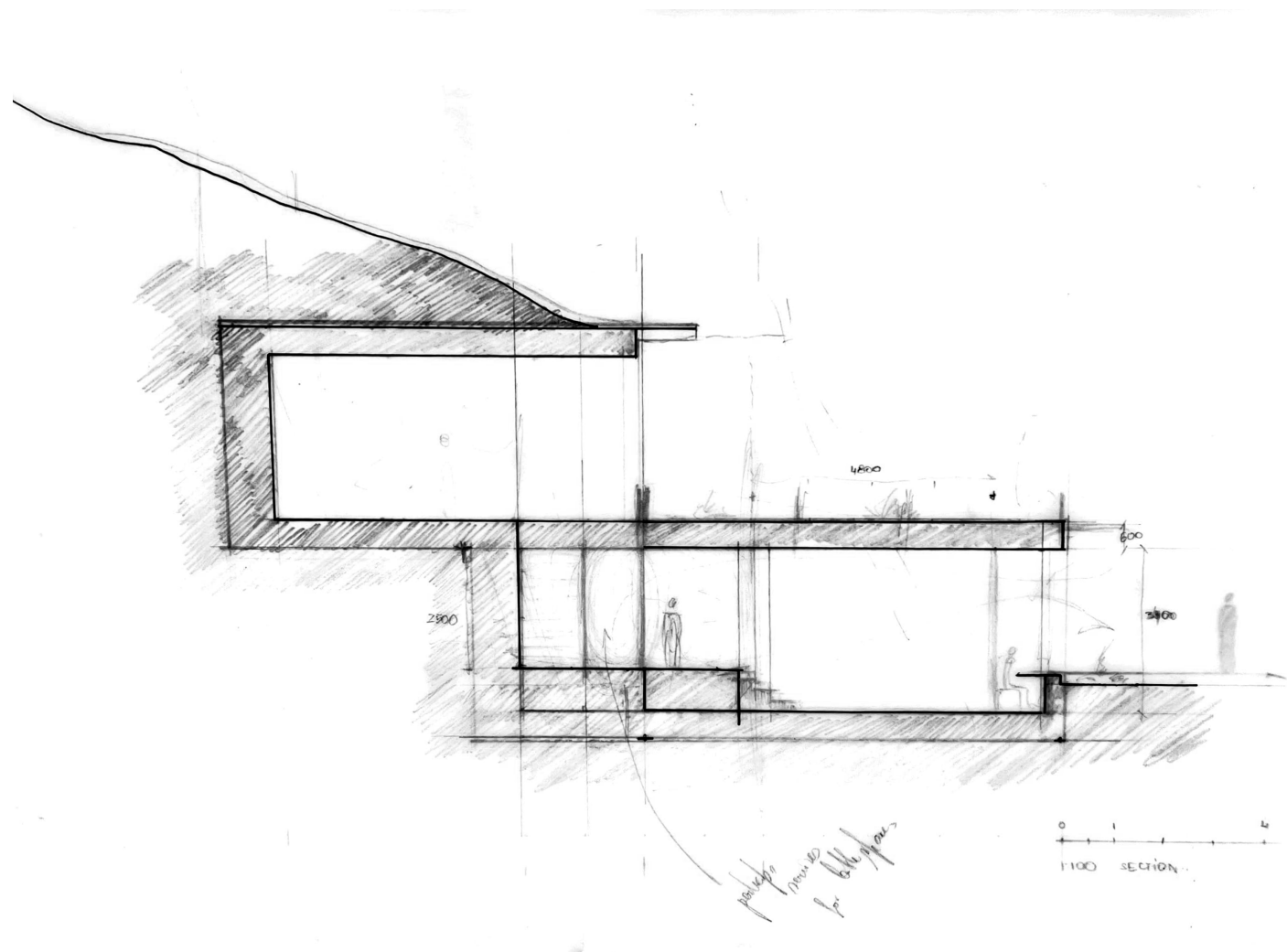
development

pavilion

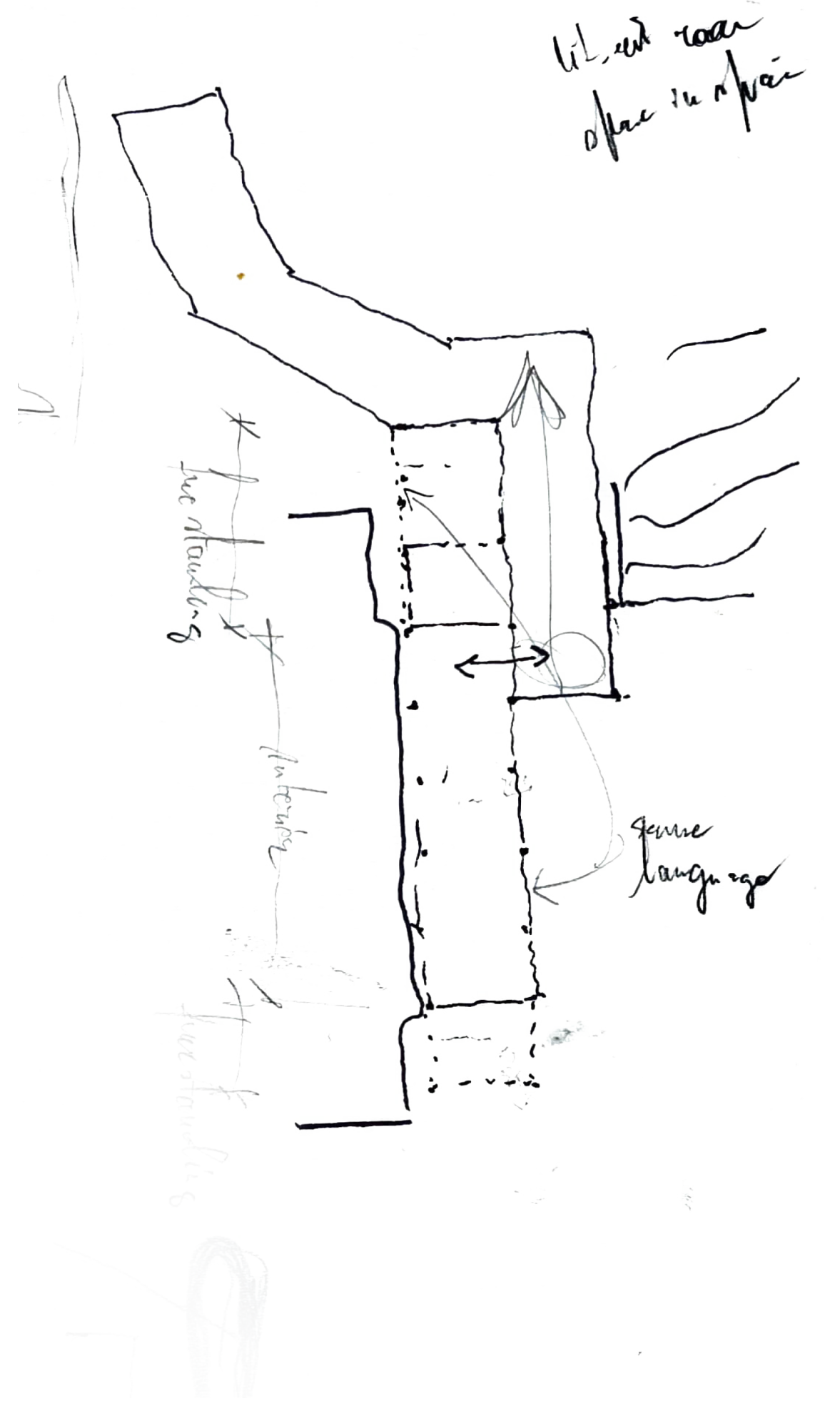


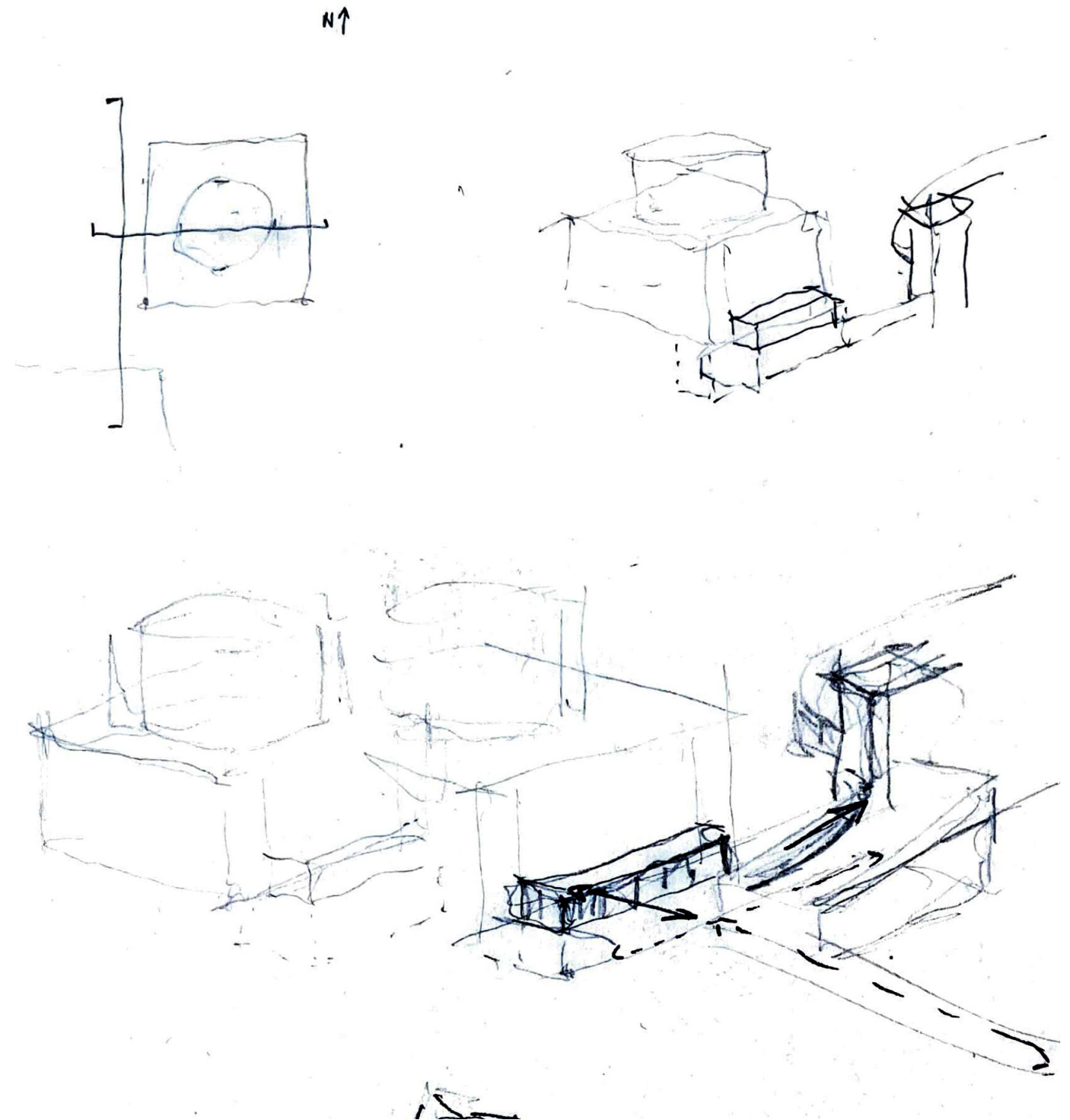
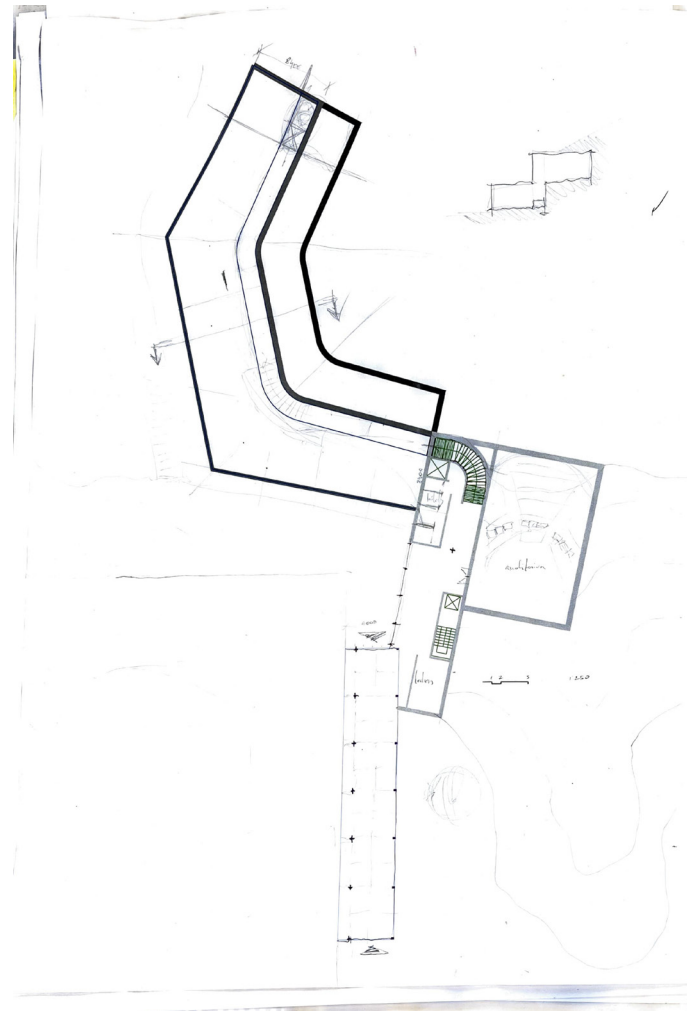
terraces





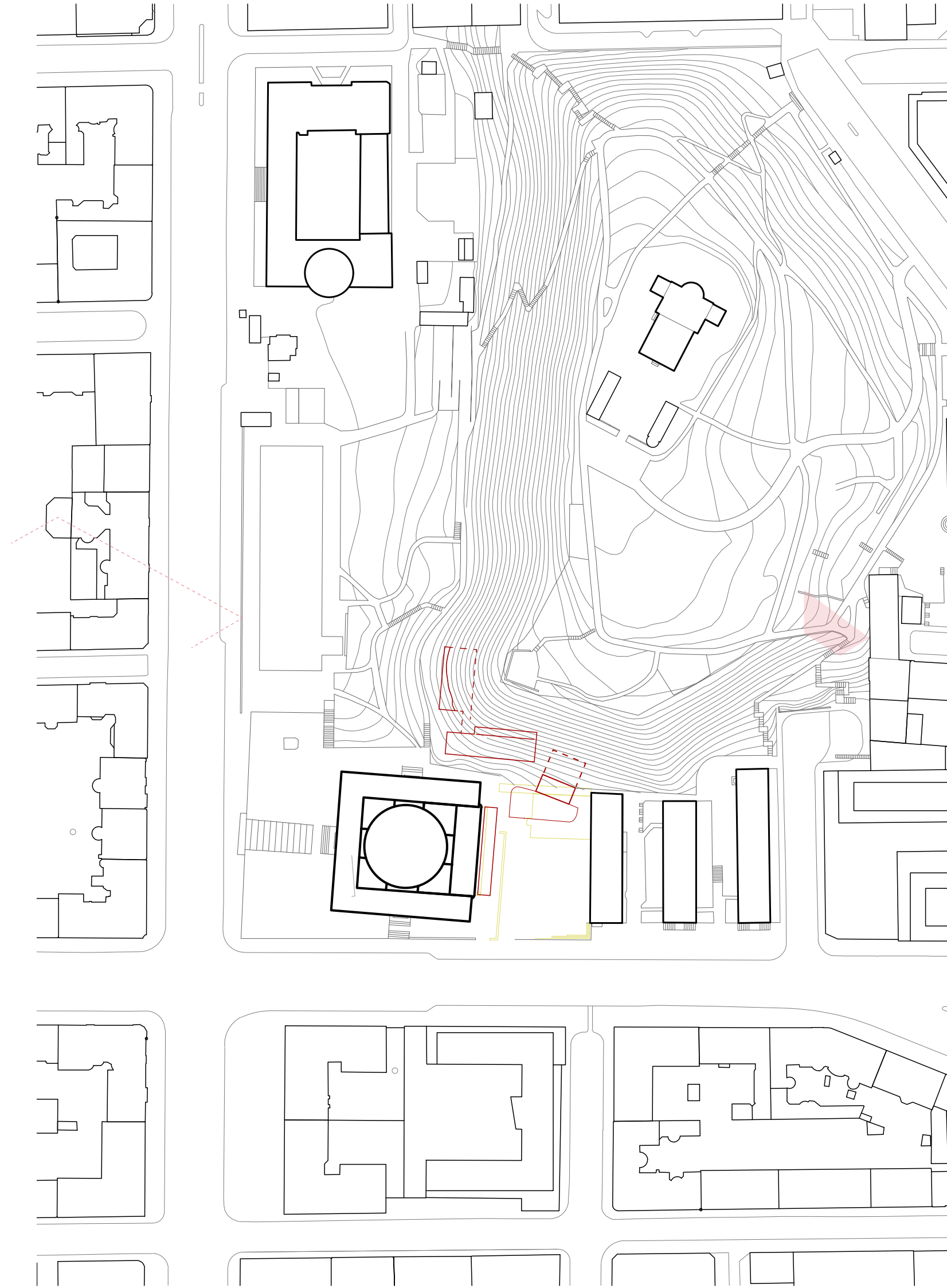
the spine

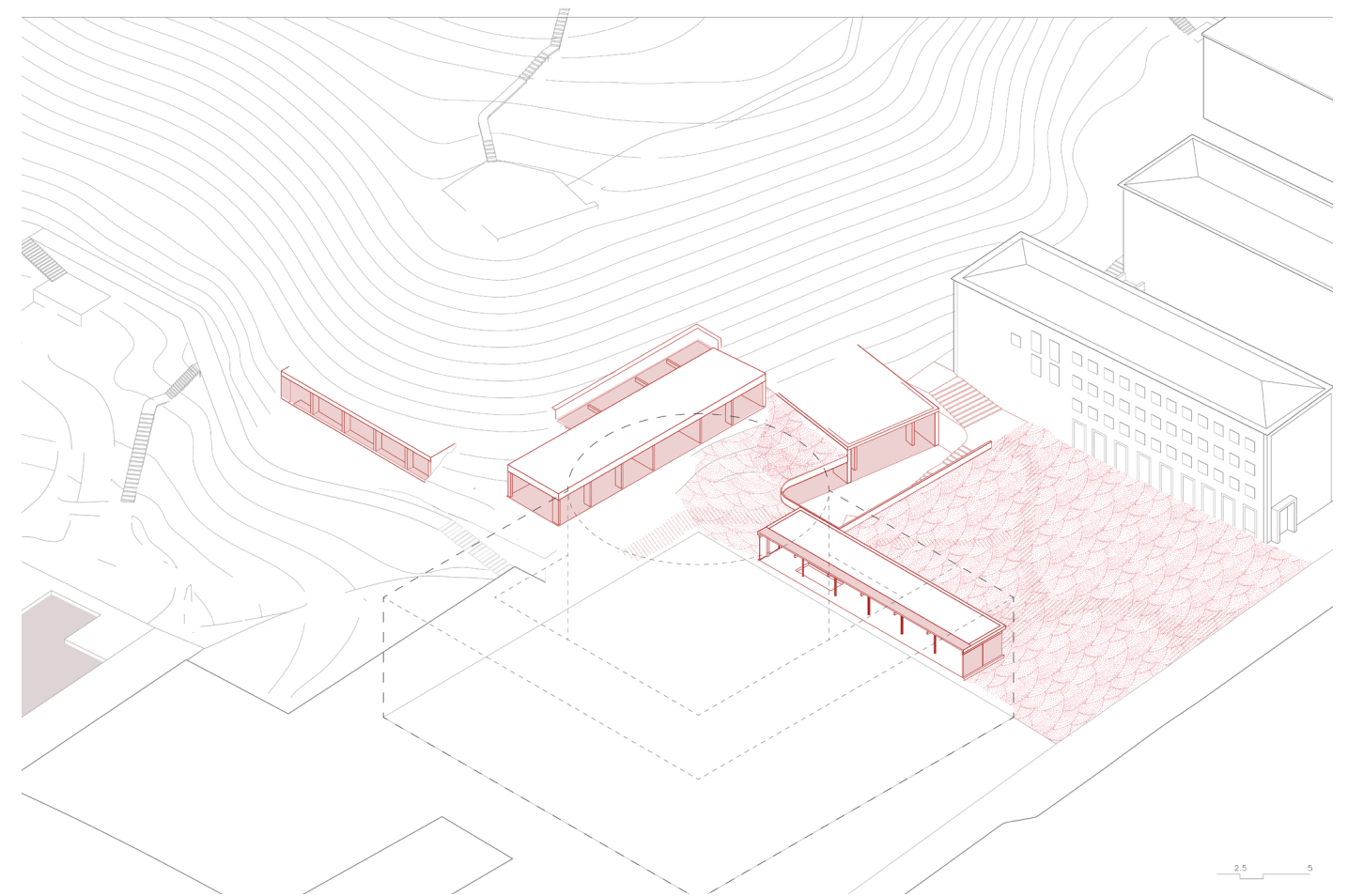




Spaces in Between



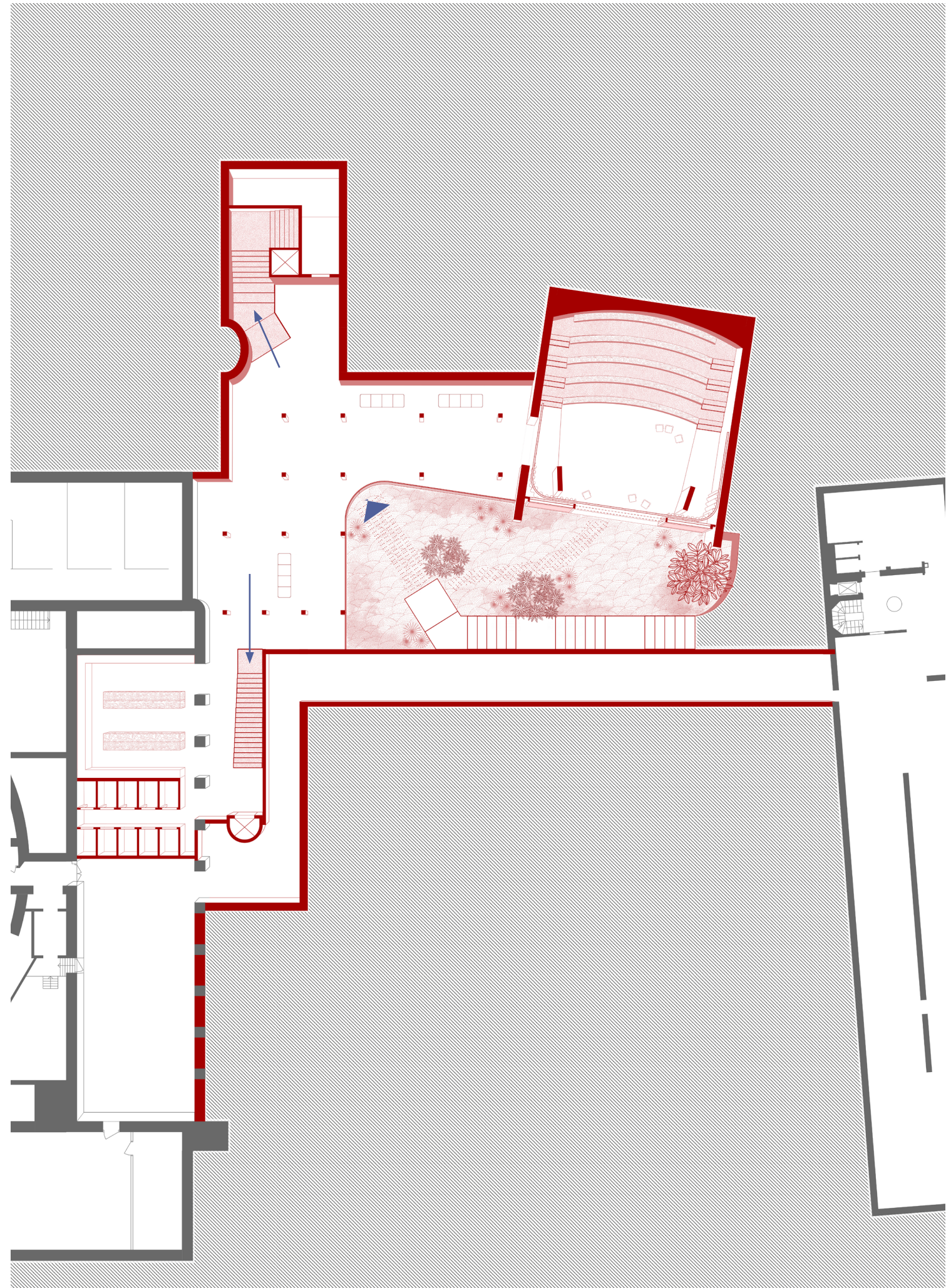




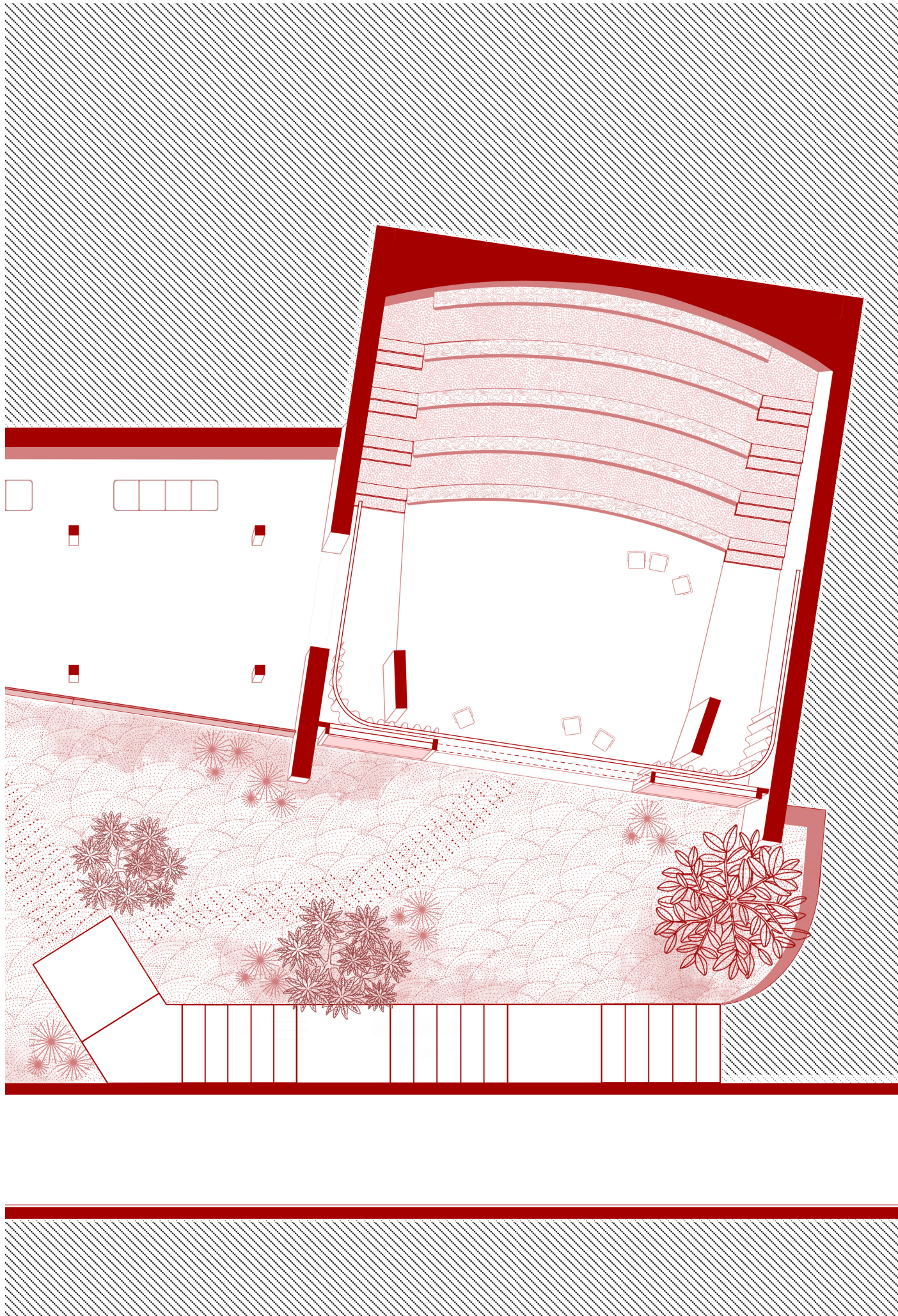


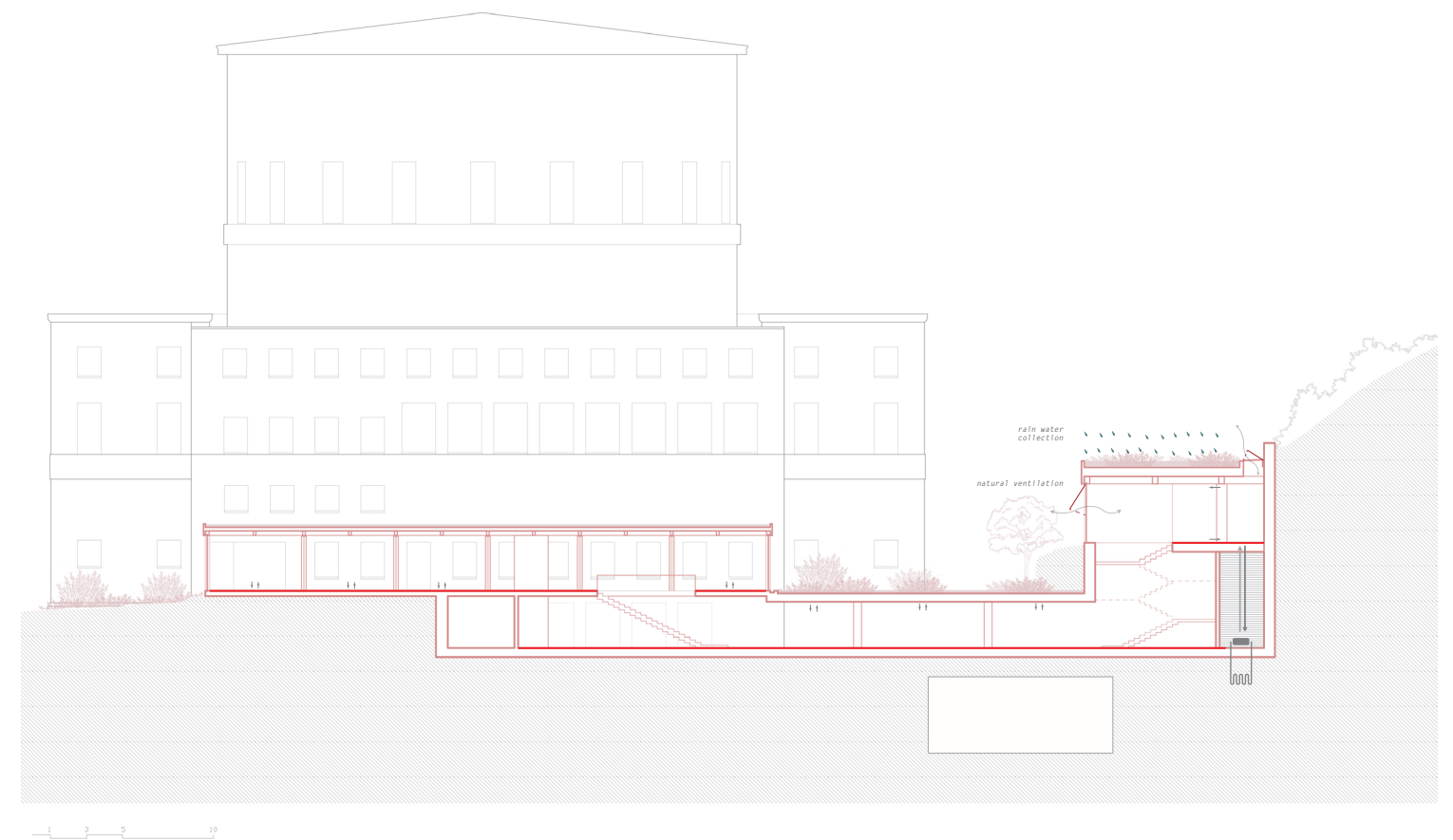
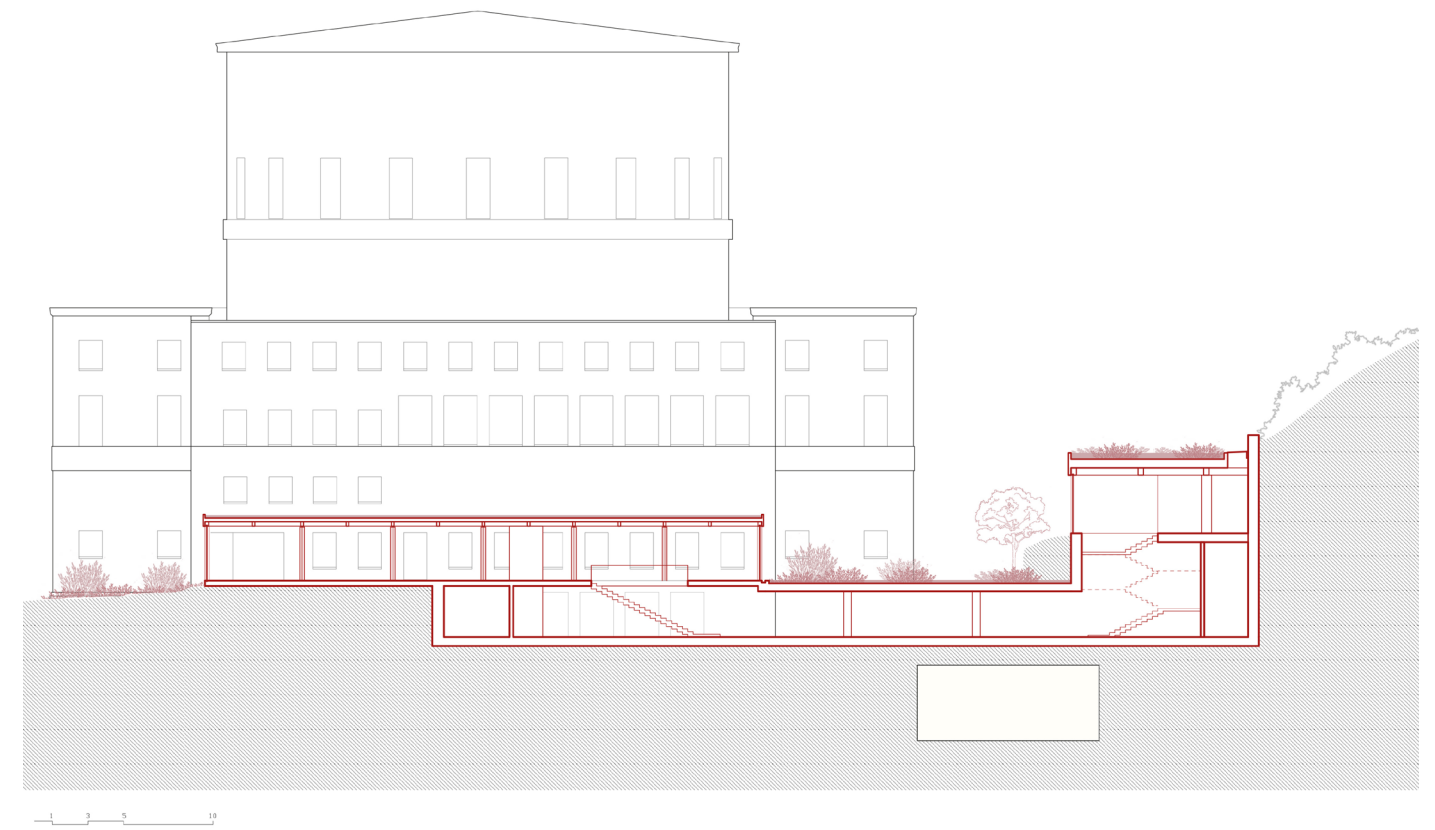


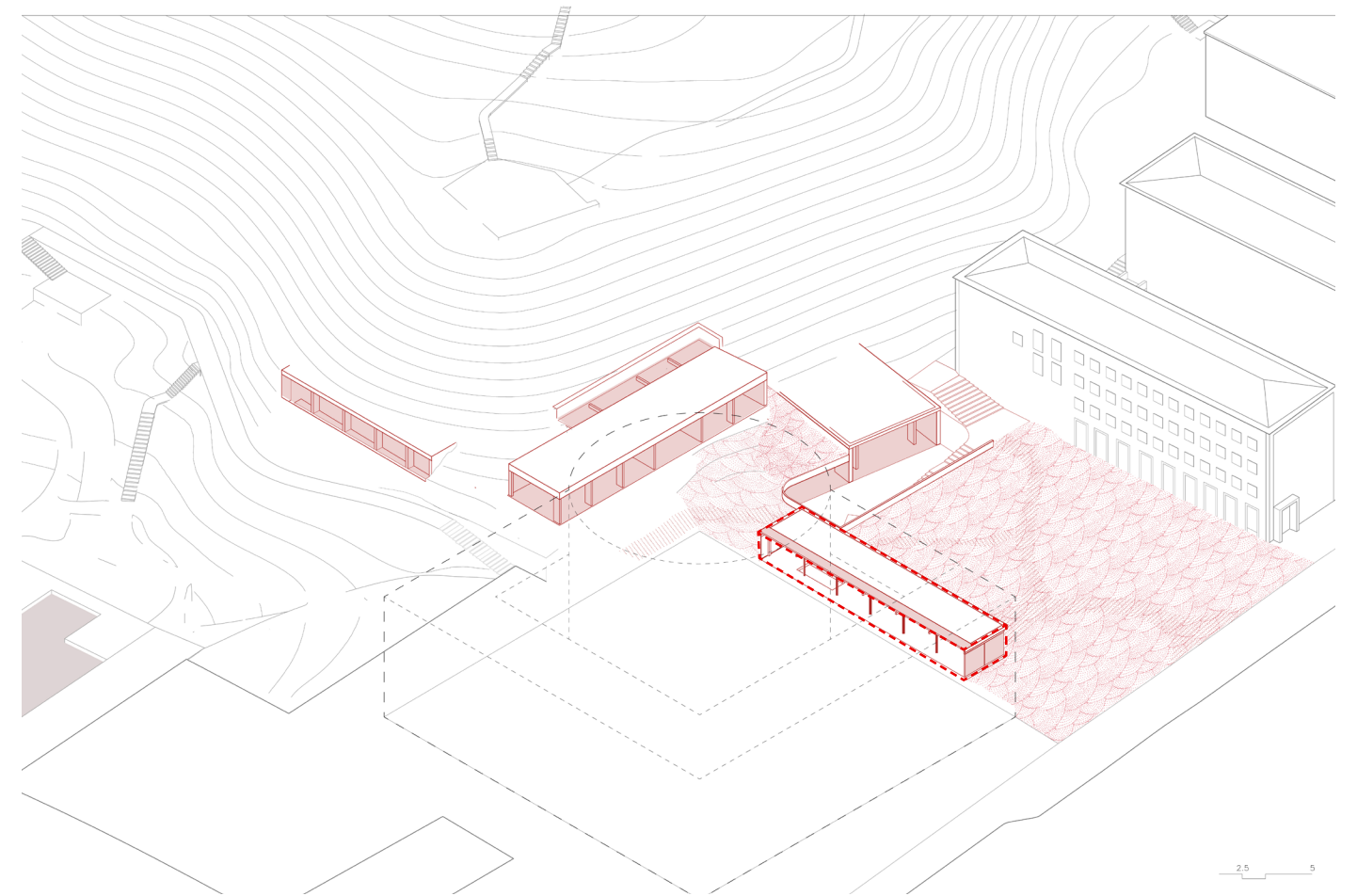


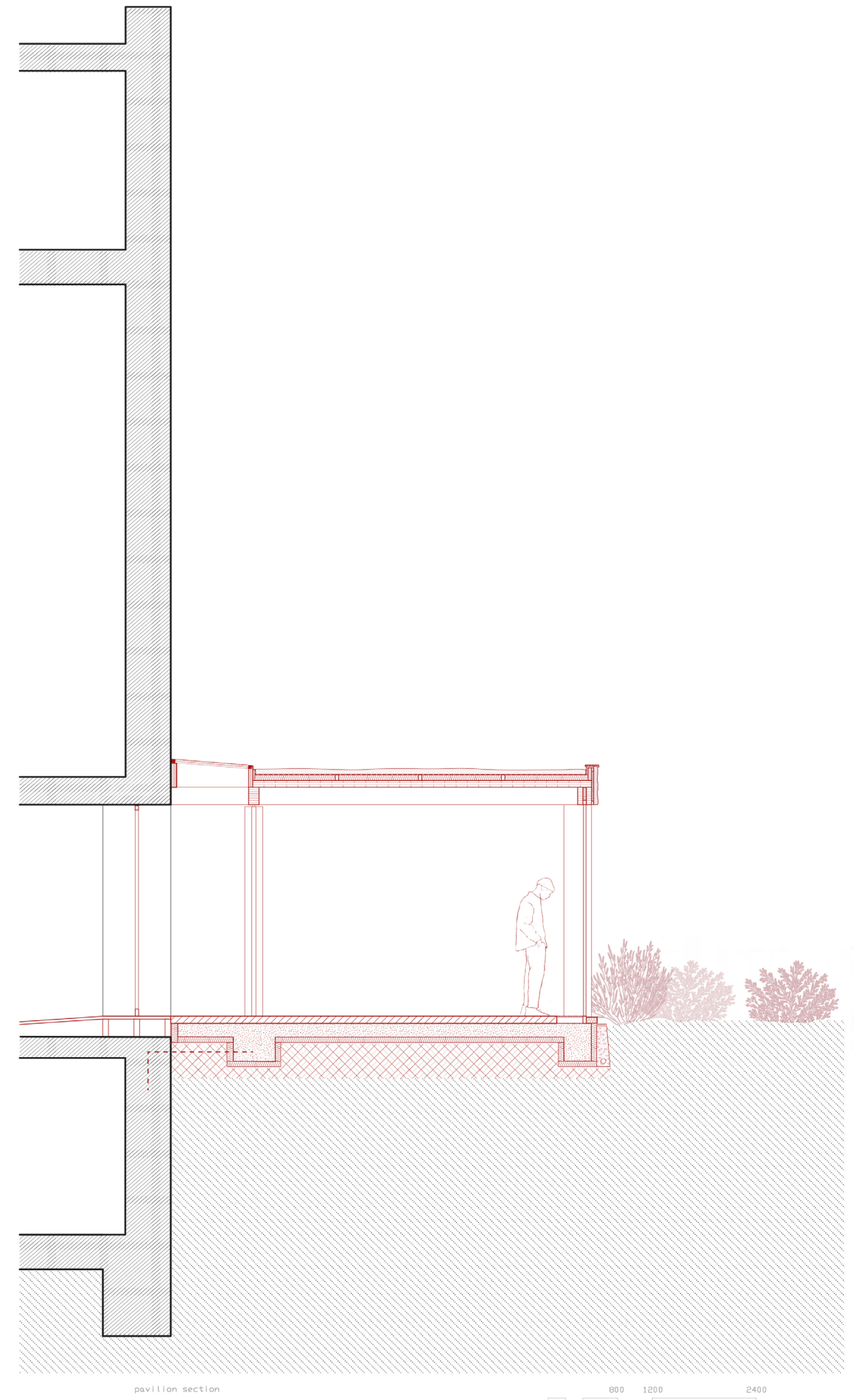
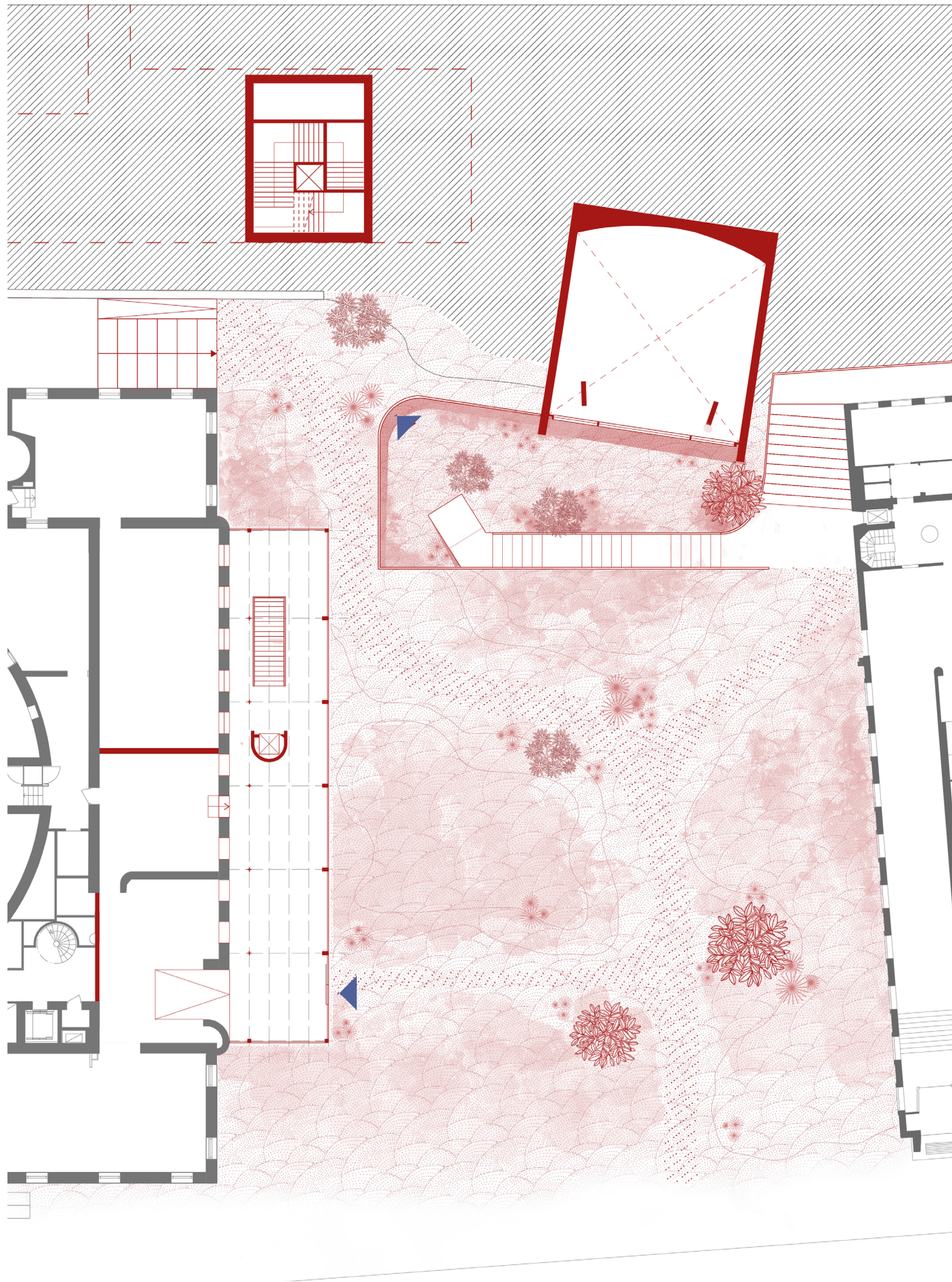


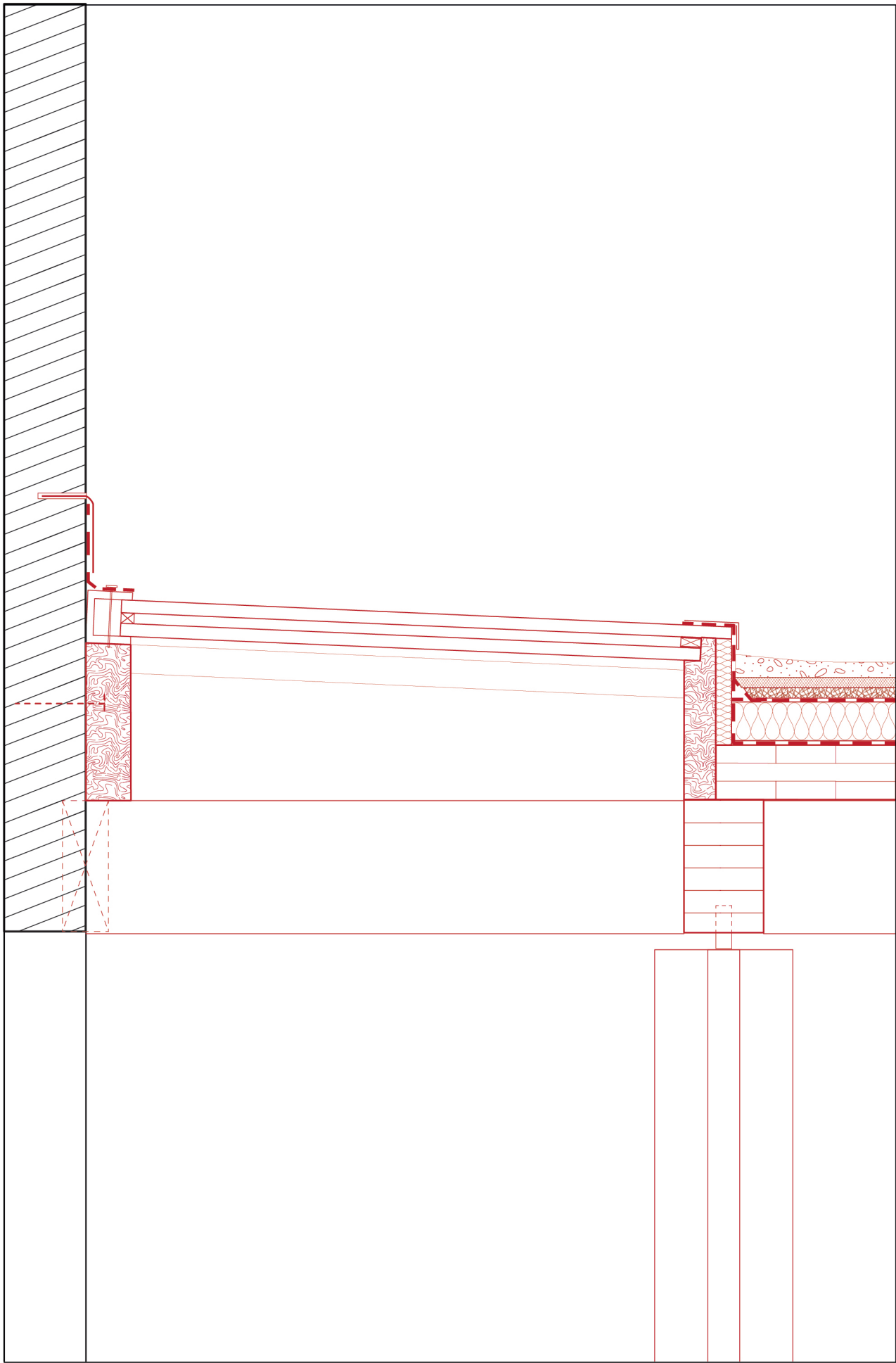












100 500

