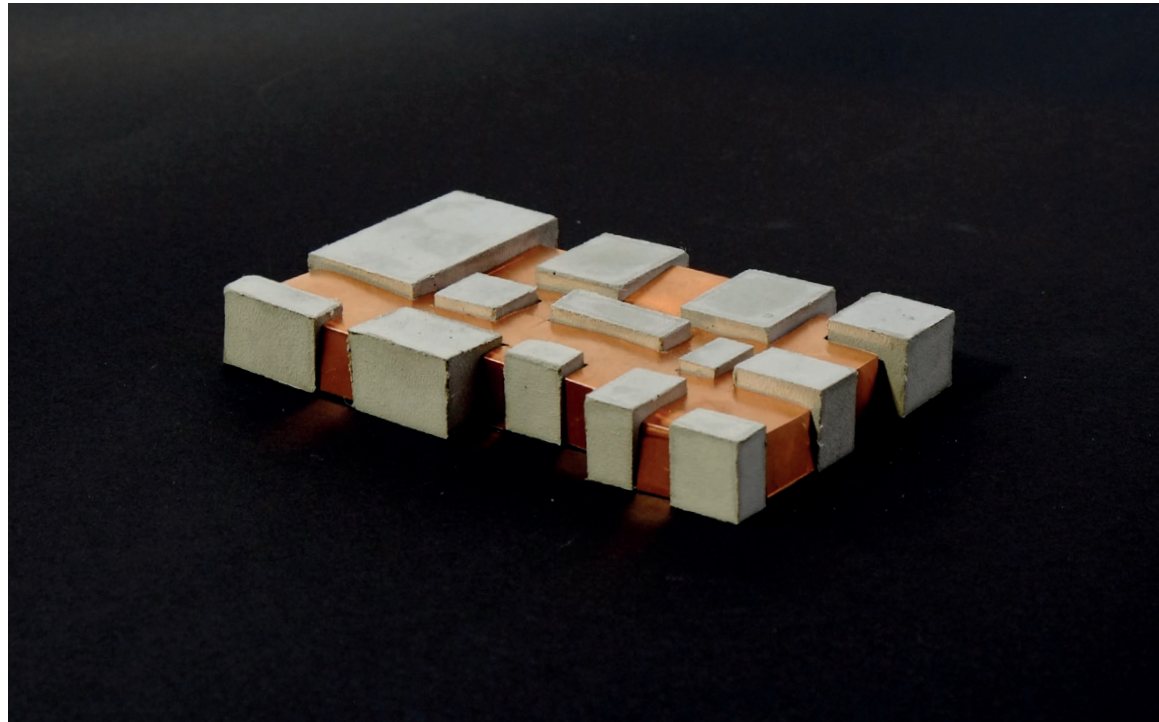


campus roosenberg



[Home](#) > [News](#) > Campus Abbey Roosenberg

## CAMPUS ABBEY ROOSENBURG

The KU Leuven establishes a study center for religion, architecture and art in the Abbey of Roosenberg in Waasmunster (Oudeheerweg-Heide 3, B-9250 Waasmunster).



On December 18, 2016 the agreement between the Mariazusters van Franciscus and the KU Leuven was officially signed. The KU Leuven now joins the association that owns the Abbey of Roosenberg and will operate the abbey as Campus Abdij Roosenberg. Together they will develop, in particular a study and conference center in the fields of singing, architecture and art development from spiritual, intellectual and artistic perspective. The KU Leuven is committed to respect the spiritual and architectural character of the building and the associated spiritual heritage of the Congregation of the Mariazusters van Franciscus. The KU Leuven will be responsible for the maintenance and the necessary restoration of this unique structure.

The work of Dom Hans van der Laan is part of the collective memory in architecture, both nationally and internationally and the abbey of Roosenberg plays a central role. In recent years, more and more artists and architects are finding their way to the abbey to study or work there. The growing interest resulted in the abbey being in close contact with the Faculty of Architecture Campus Sint-Lucas Ghent of the KU Leuven during the last decade. Lecturer [Caroline Voet](#) wrote a doctorate on the work of Dom Hans van der Laan, also coordinating guided tours, stays and international workshops for architects and architecture students.

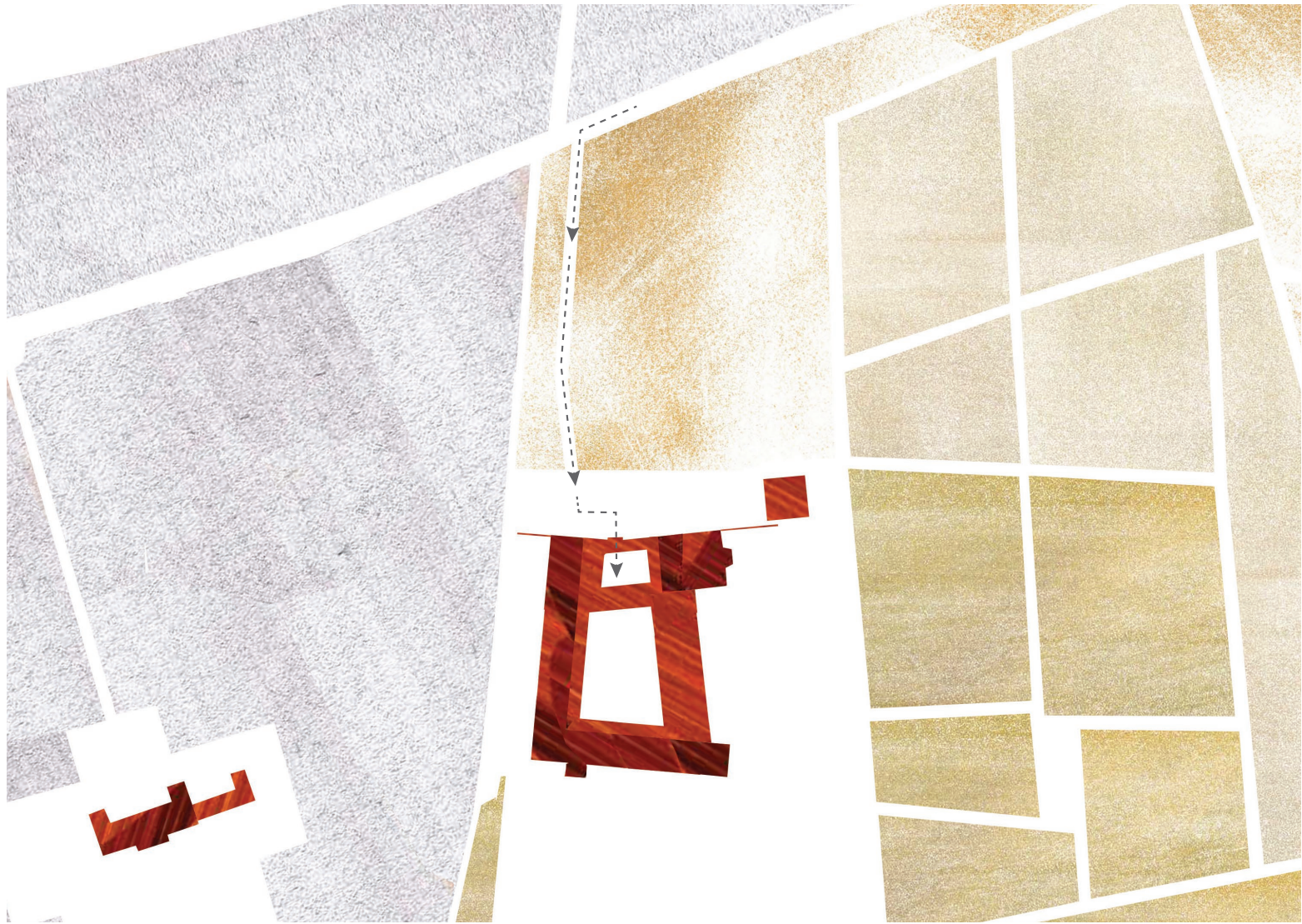
The KU Leuven wants to further develop these activities from the Faculty of Architecture Campus Sint-Lucas Ghent, together with the LUCA School of Arts in Ghent, as an international study and congress center that will conduct an active policy in the fields of singing, architecture and art. It will offer the opportunity to bring artists, architects and academics together. It wants to be a breeding ground for reflection and new education, preserving the authenticity of the abbey and landscape architecture, as a unique environment for this campus.



ku leuven announcing study- and congresscenter



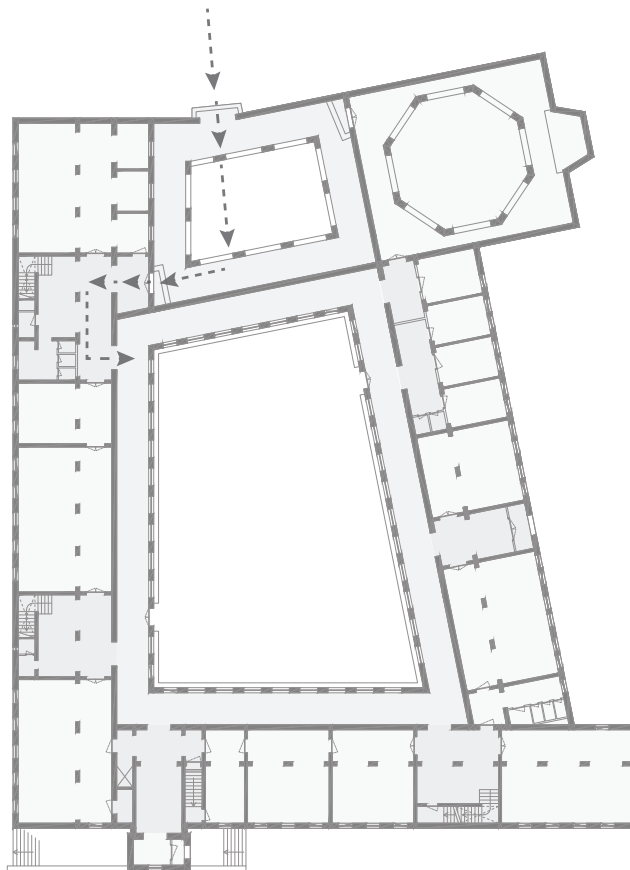
abbey roosenberg's situation



staging of entrance sequence



roosenberg abbey's entrance

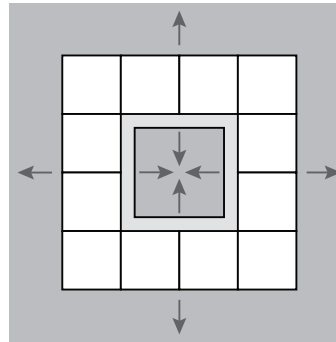


staging of entrance sequence

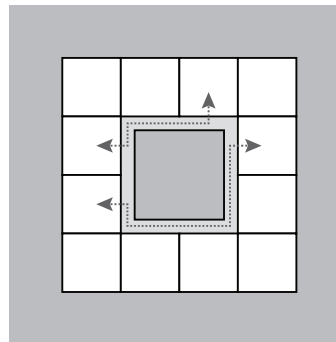


abbey roosenberg's cloister

peripheral disposition



*dual orientation/articulation of courtyard*



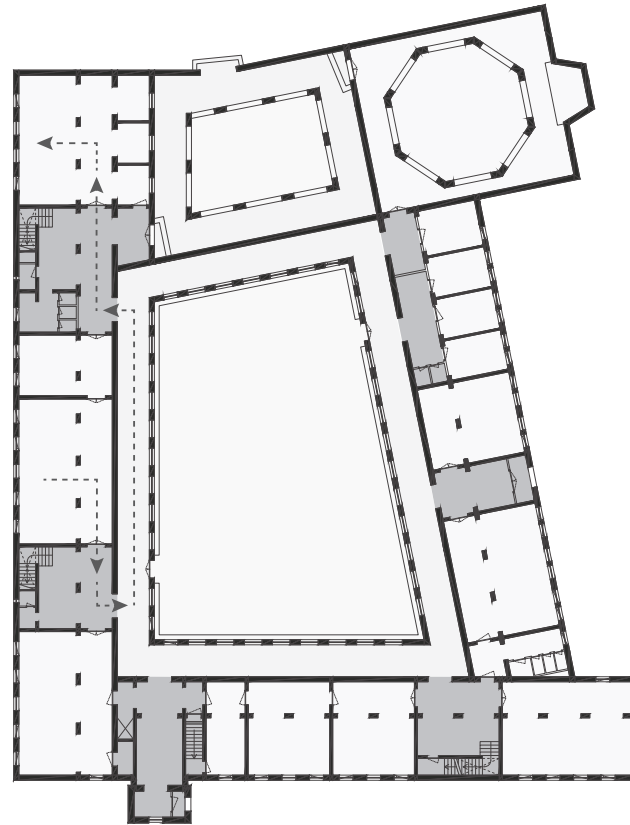
*separation of spaces*

peripheral disposition as preferred organization





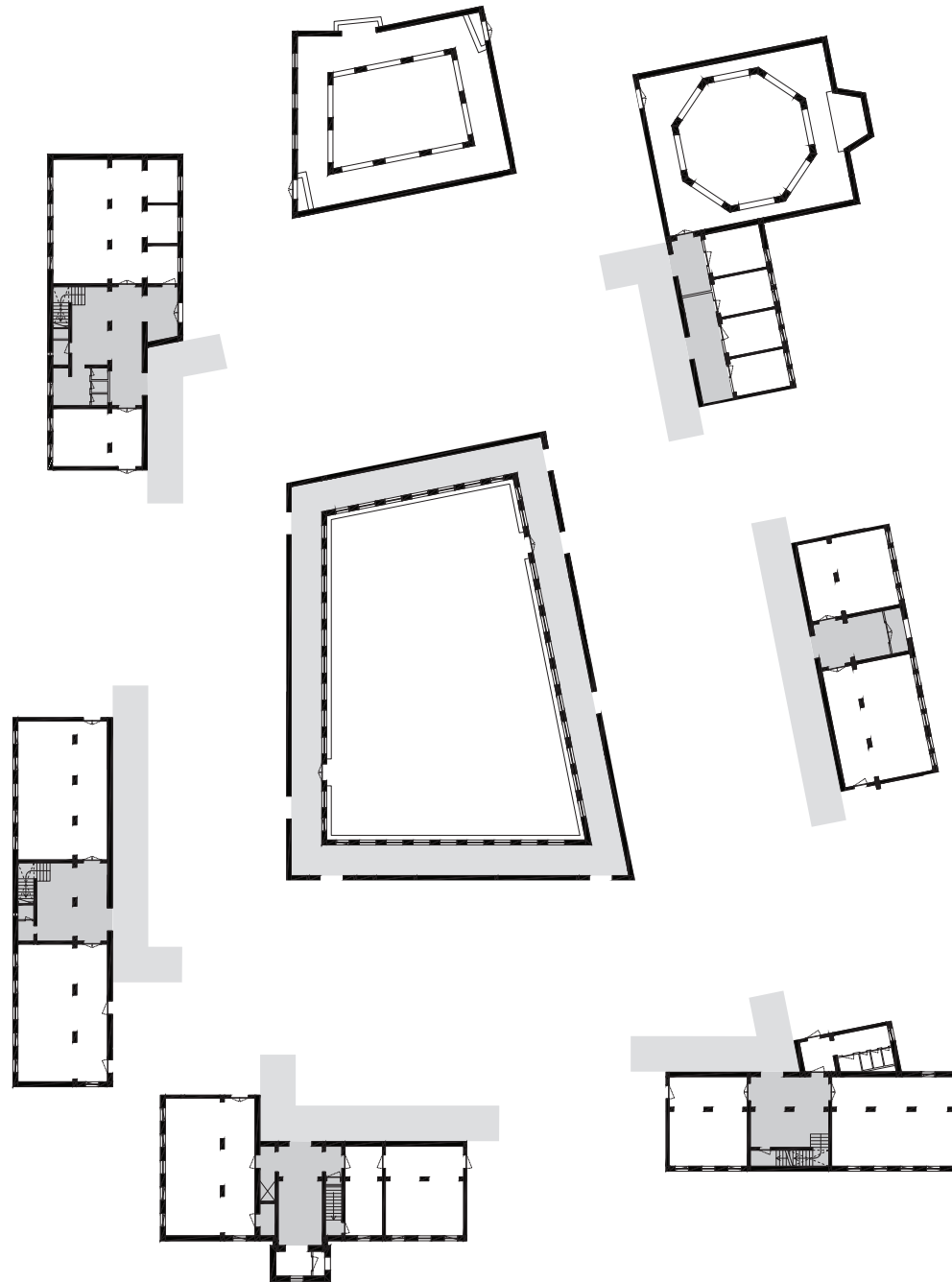
abbey's organization fit for original function



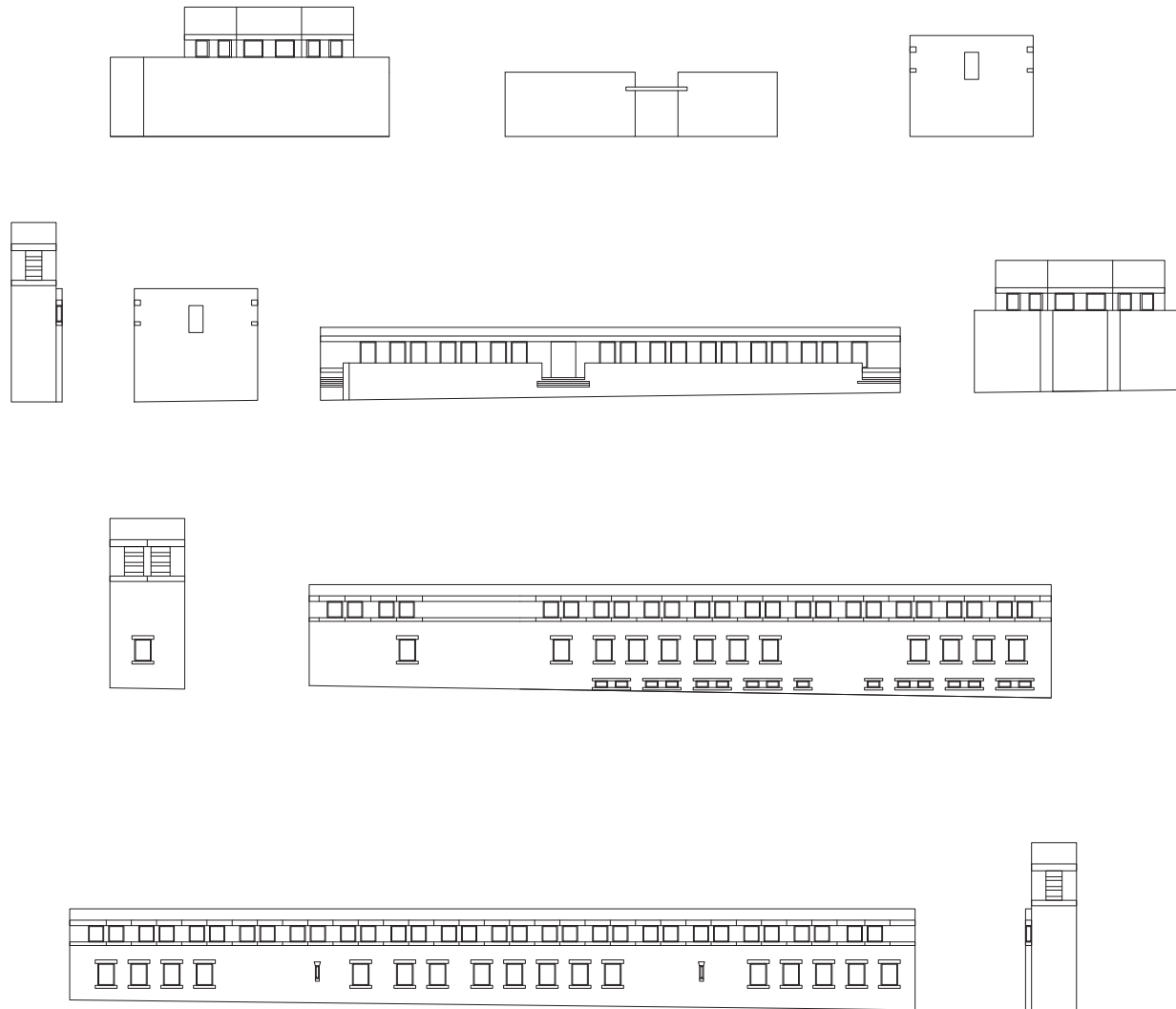
light/dark contrast in transition between spaces



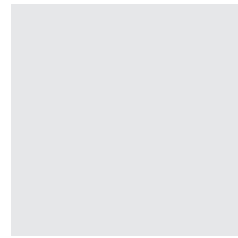
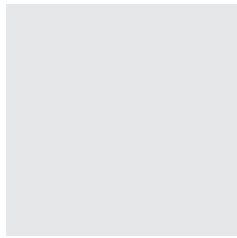
light/dark contrast in abbey roosenberg



clusters resulting from peripheral disposition



facades deconstructed into clusters



dynamic disposition

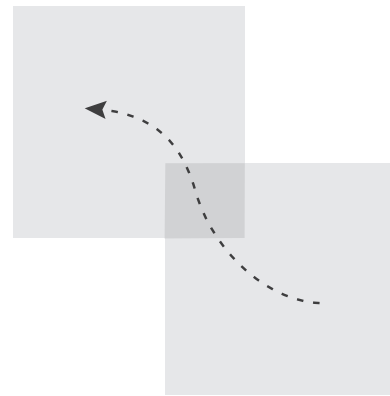


dynamic disposition

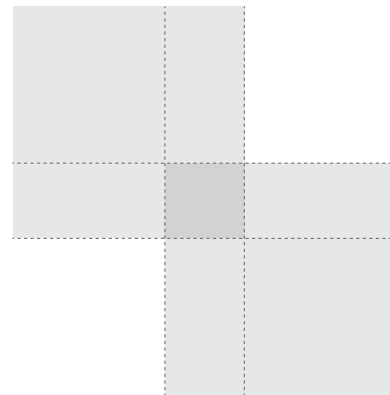


dynamic disposition





dynamic disposition



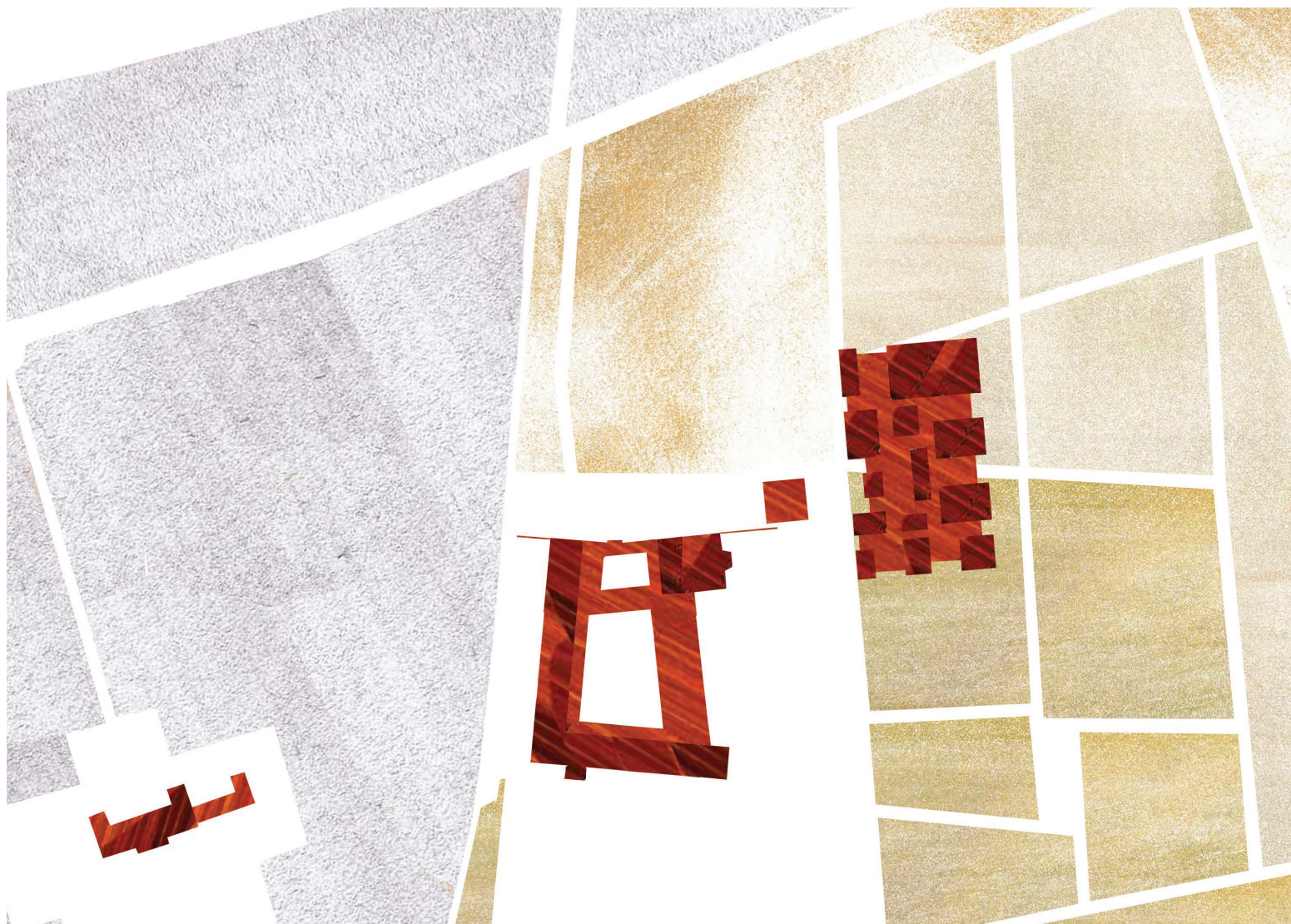
dynamic disposition



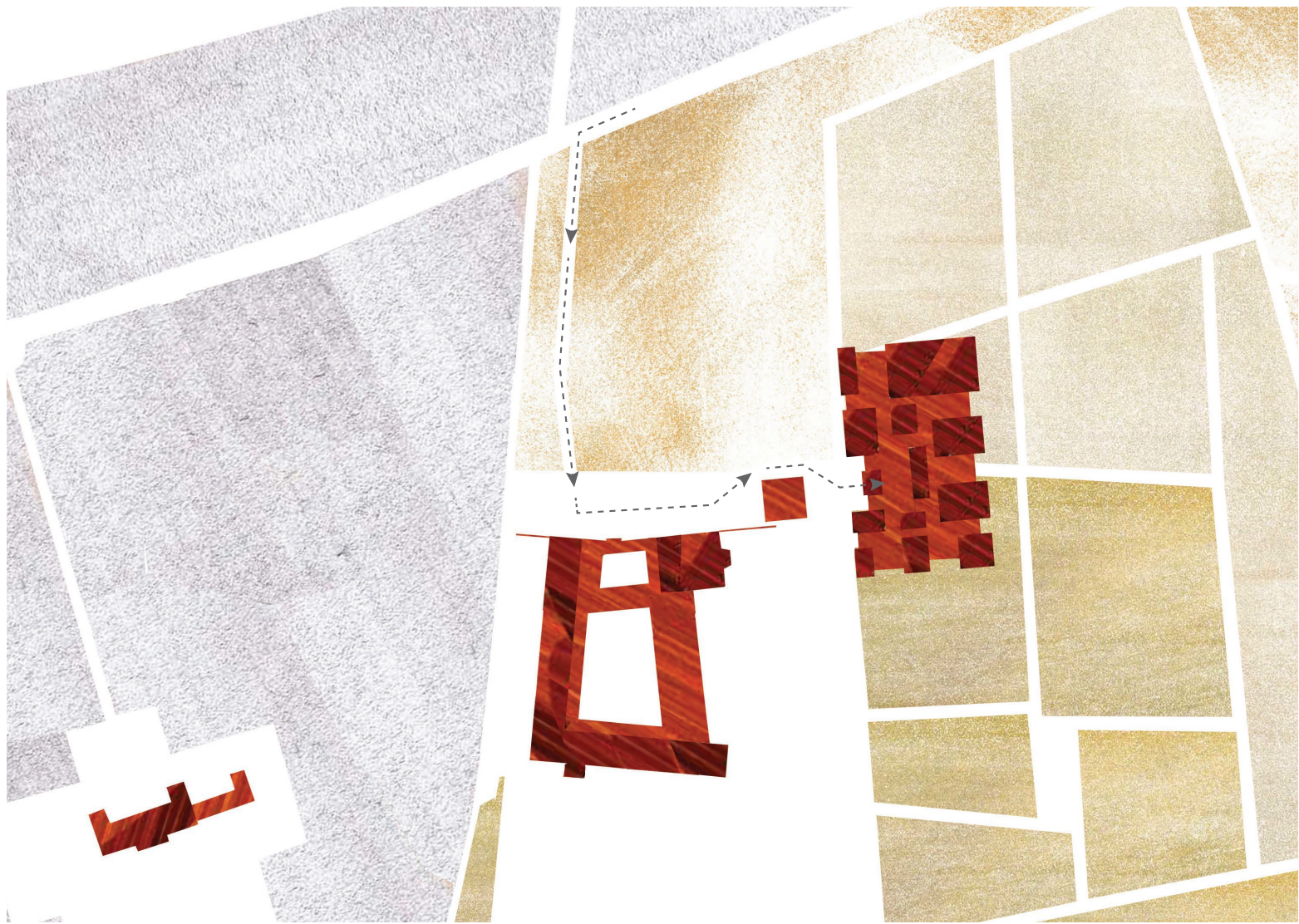
abbey roosenberg's situation



surrounding forest



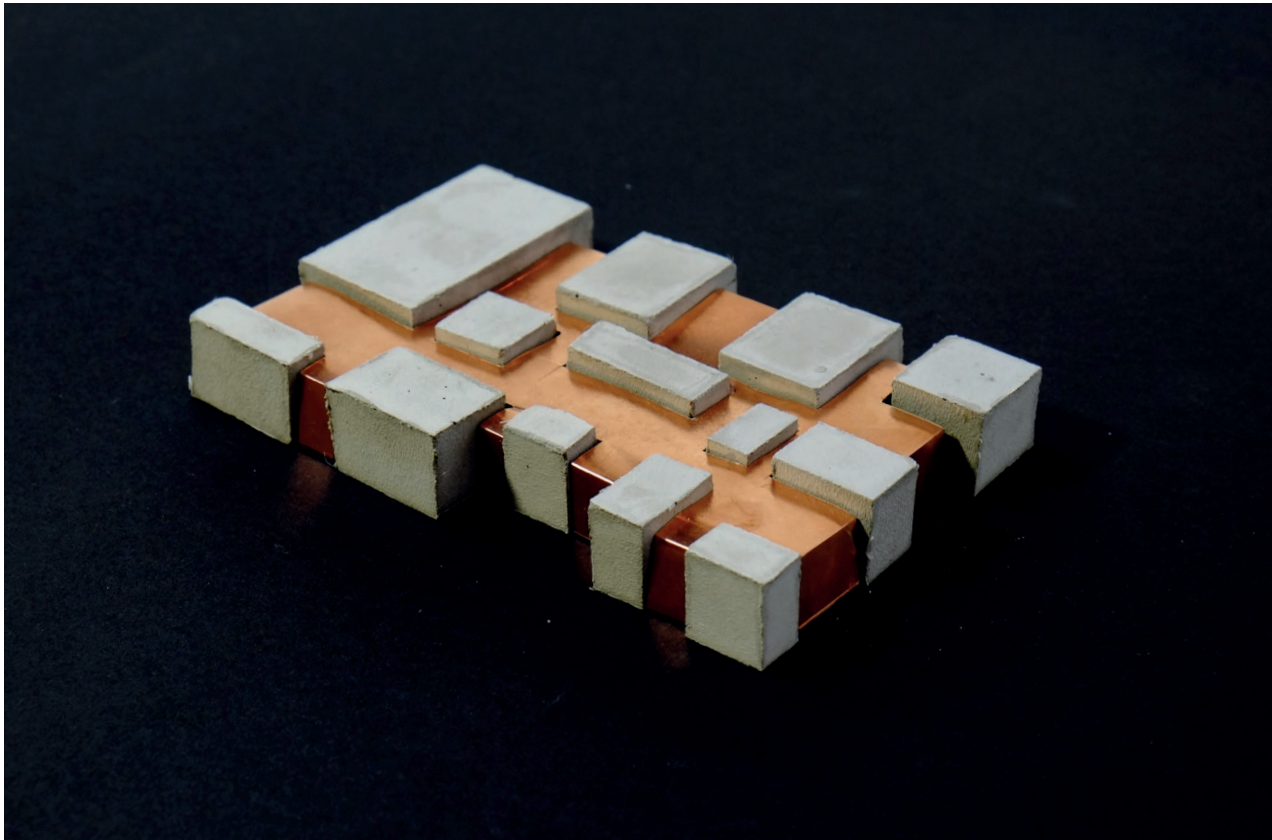
extension in relation to abbey roosenberg



entrance sequence to extension

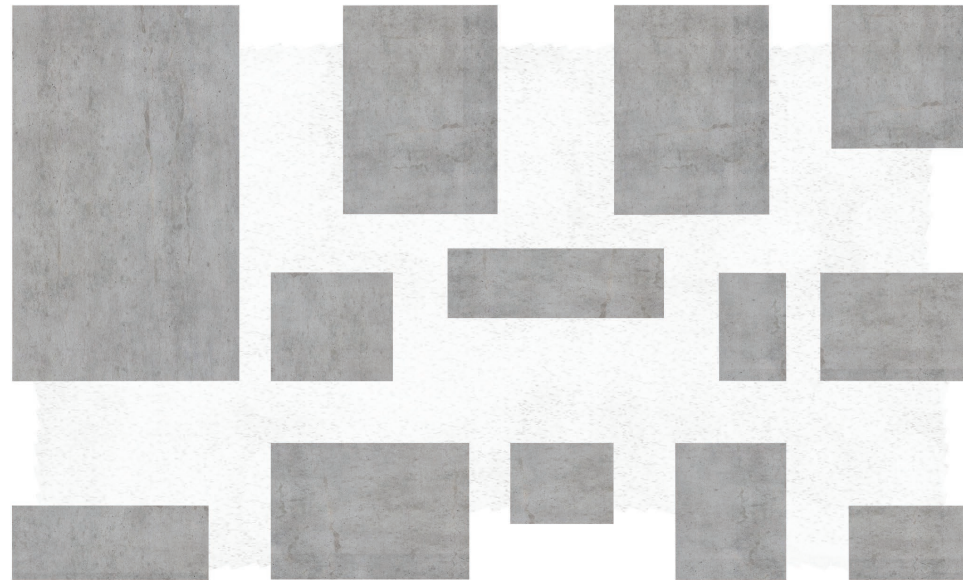


extension in relation to abbey rosenberg



arrangement of volumes





continuous space articulated by volumes

studycenter

*reflection*

congresscenter

*breeding ground & new education forms*

interpretation of given program

studycenter

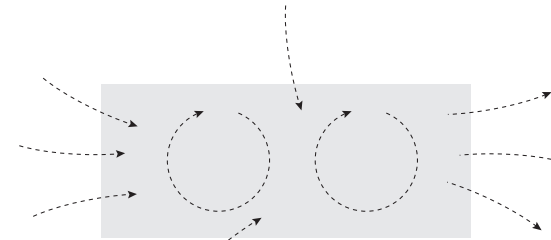
*reflection*



*long, introvert process;  
outside references at beginning + end of process*

congresscenter

*breeding ground & new education forms*



*short, extrovert process;  
continuous outside references, focussed  
on collaboration*

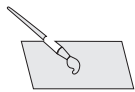
interpretation of given program

studycenter

*reflection*



*long, introvert process;  
outside references at beginning + end of process*



*work*



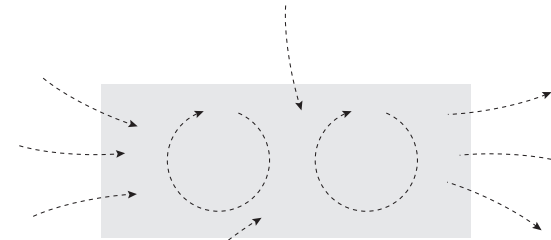
*study*



*work*

congresscenter

*breeding ground & new education forms*



*short, extrovert process;  
continuous outside references, focussed  
on collaboration*



*lecture*



*exposition*



*alumni*



*conference*

interpretation of given program

studycenter

reflection



long, introvert process;  
outside references at beginning + end of process



work

study

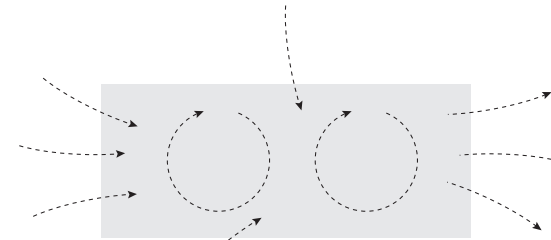
work



closed workspaces

congresscenter

breeding ground & new education forms



short, extrovert process;  
continuous outside references, focussed  
on collaboration

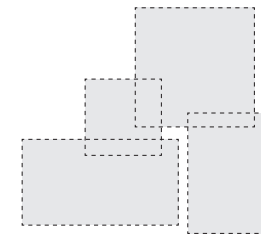


lecture

exposition

alumni

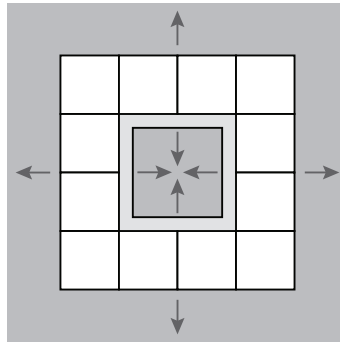
conference



flexible, open plan layout

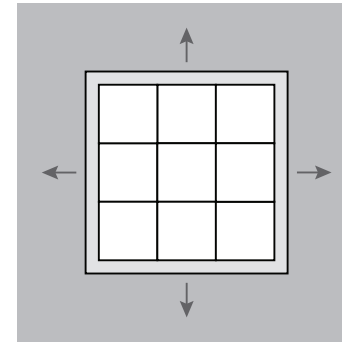
interpretation of given program

peripheral disposition



*dual orientation/articulation of courtyard*

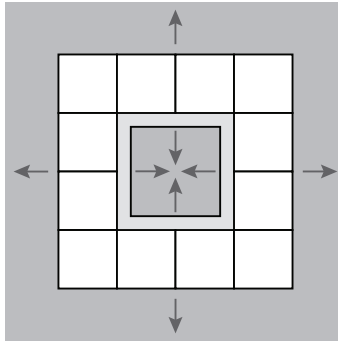
central disposition



*single exterior orientation*

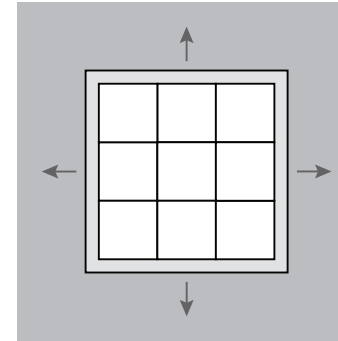
peripheral vs central disposition

peripheral disposition

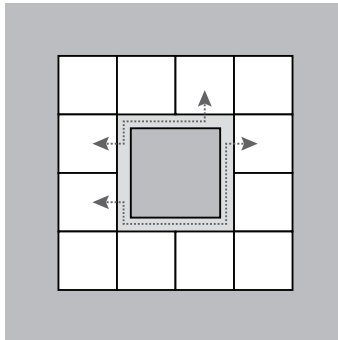


*dual orientation/articulation of courtyard*

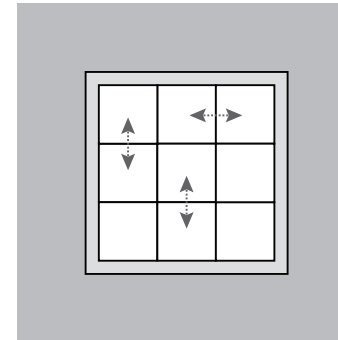
central disposition



*single exterior orientation*



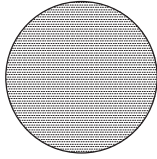
*separation of spaces*



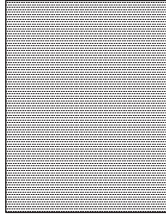
*interaction between spaces*

peripheral vs central disposition

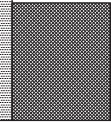
continuous space,  
publicly



restaurant  
600 m<sup>2</sup>



kitchen  
200 m<sup>2</sup>



terrace  
150 m<sup>2</sup>



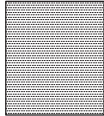
coffee bar  
150 m<sup>2</sup>



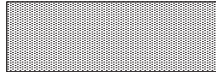
terrace  
50 m<sup>2</sup>



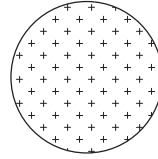
foyer  
200 m<sup>2</sup>



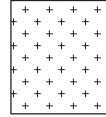
circulation space  
... m<sup>2</sup>



continuous space,  
privately



exposition space  
200 m<sup>2</sup>



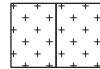
workspace  
150 m<sup>2</sup>



exposition space  
100 m<sup>2</sup>



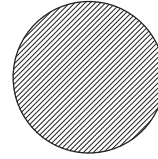
informal meeting area  
2x 50 m<sup>2</sup>



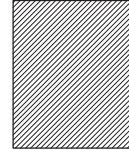
congress hall  
50 m<sup>2</sup> (30 p.)



enclosed space,  
publicly



congress hall  
300 m<sup>2</sup> (200 p.)



technical space



congress hall  
150 m<sup>2</sup> (100 p.)



library  
125 m<sup>2</sup>



wardrobe  
100 m<sup>2</sup>



congress hall  
50 m<sup>2</sup> (30 p.)



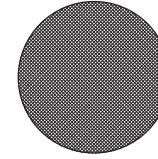
exposition space  
50 m<sup>2</sup>



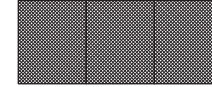
reception  
25 m<sup>2</sup>



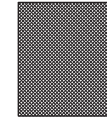
enclosed space,  
privately



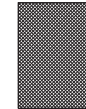
storage  
3x 100 m<sup>2</sup>



technical  
200 m<sup>2</sup>



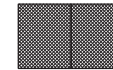
toilets  
150 m<sup>2</sup>



meeting room  
80 m<sup>2</sup>



meeting room  
2x 60 m<sup>2</sup>



storage  
75 m<sup>2</sup>



meeting room  
40 m<sup>2</sup>



meeting room  
2x 20 m<sup>2</sup>

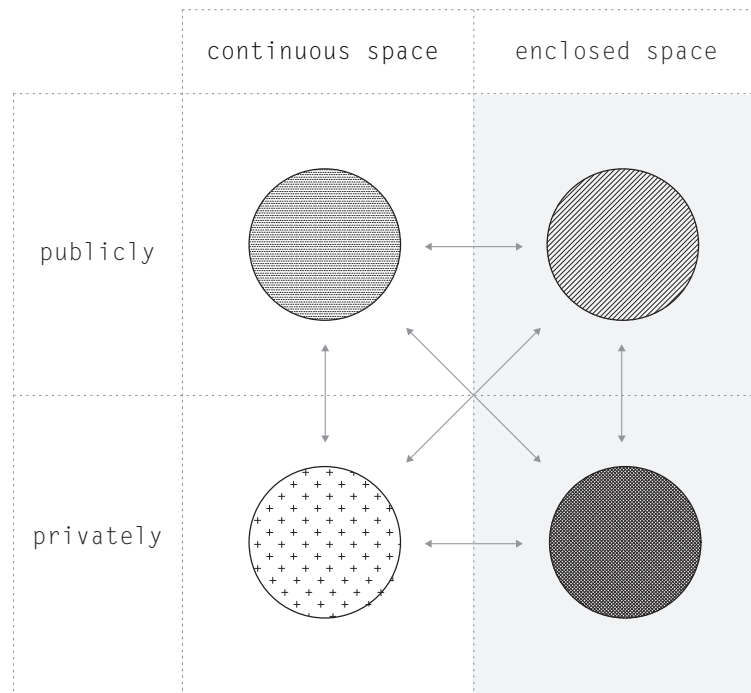


storage  
25 m<sup>2</sup>

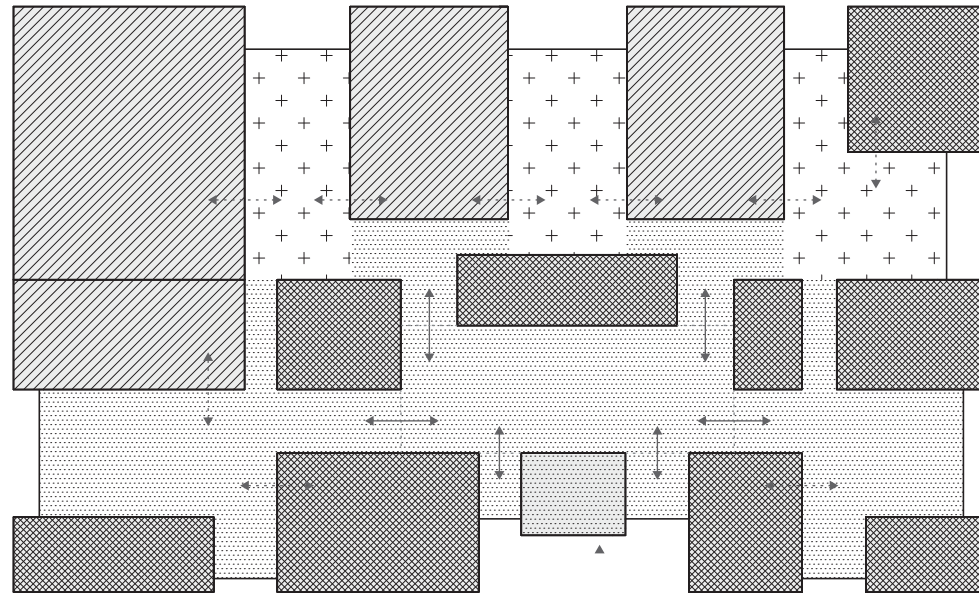


program + corresponding m<sup>2</sup>

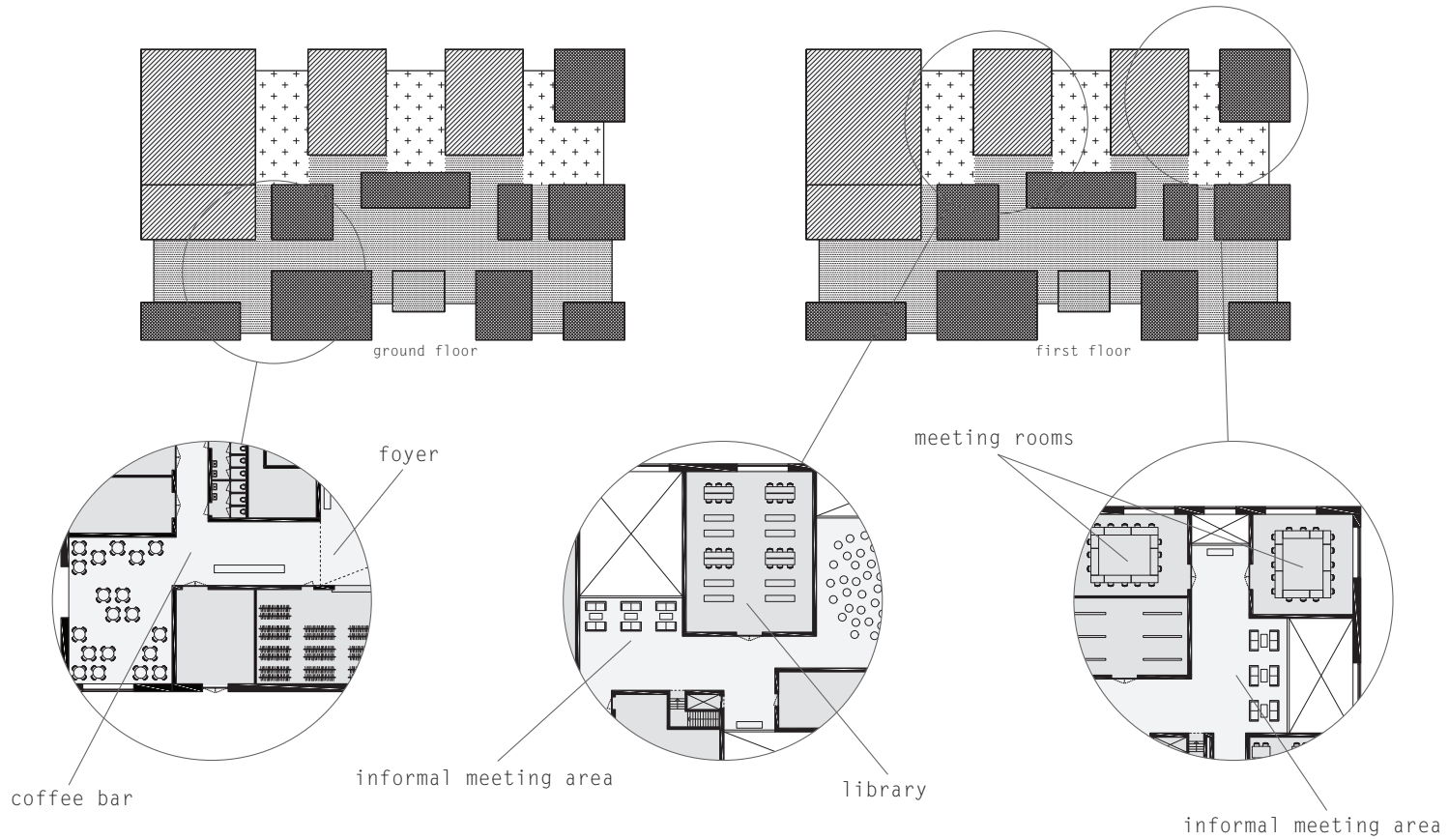




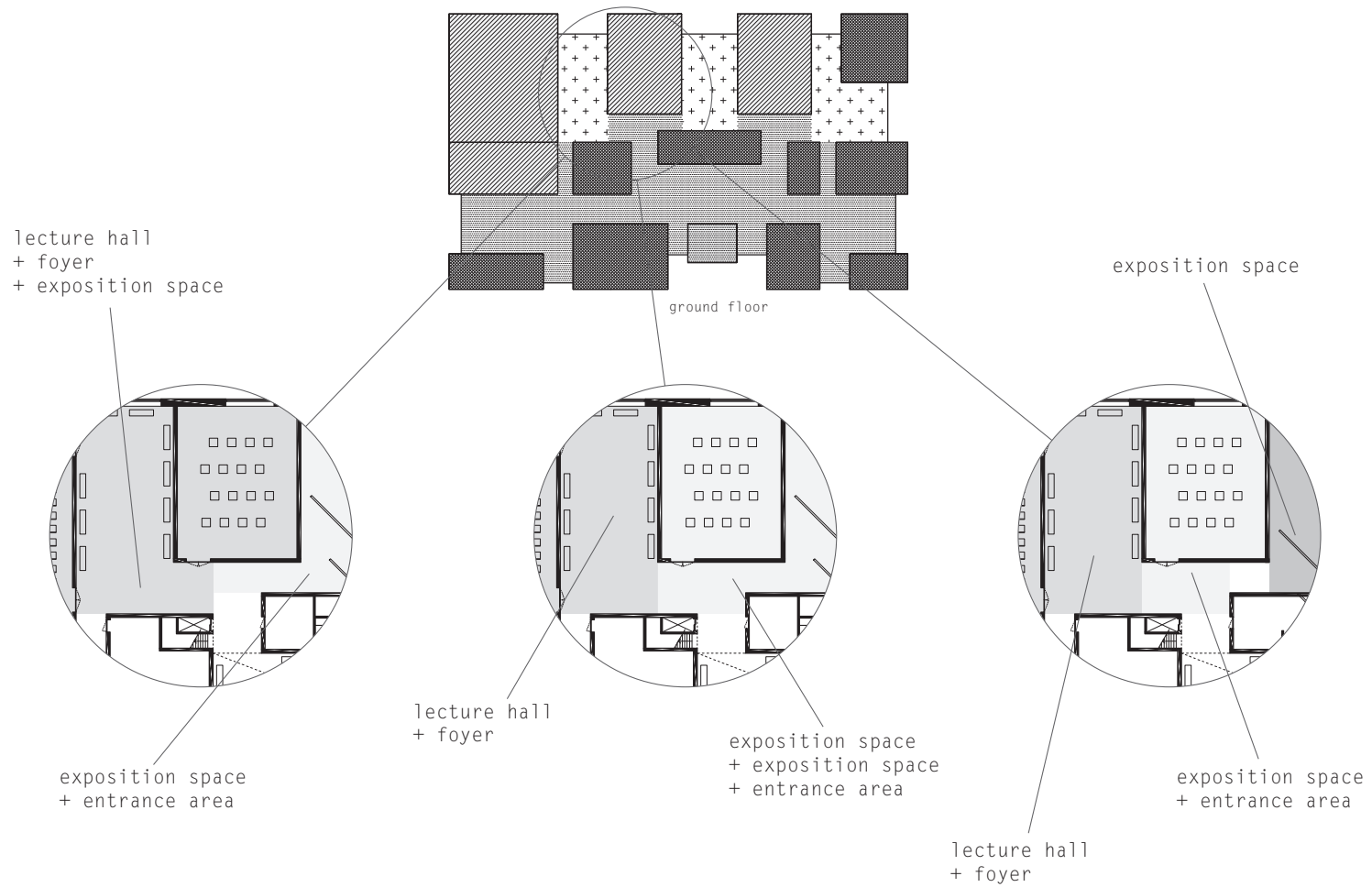
categories of program and specific relations



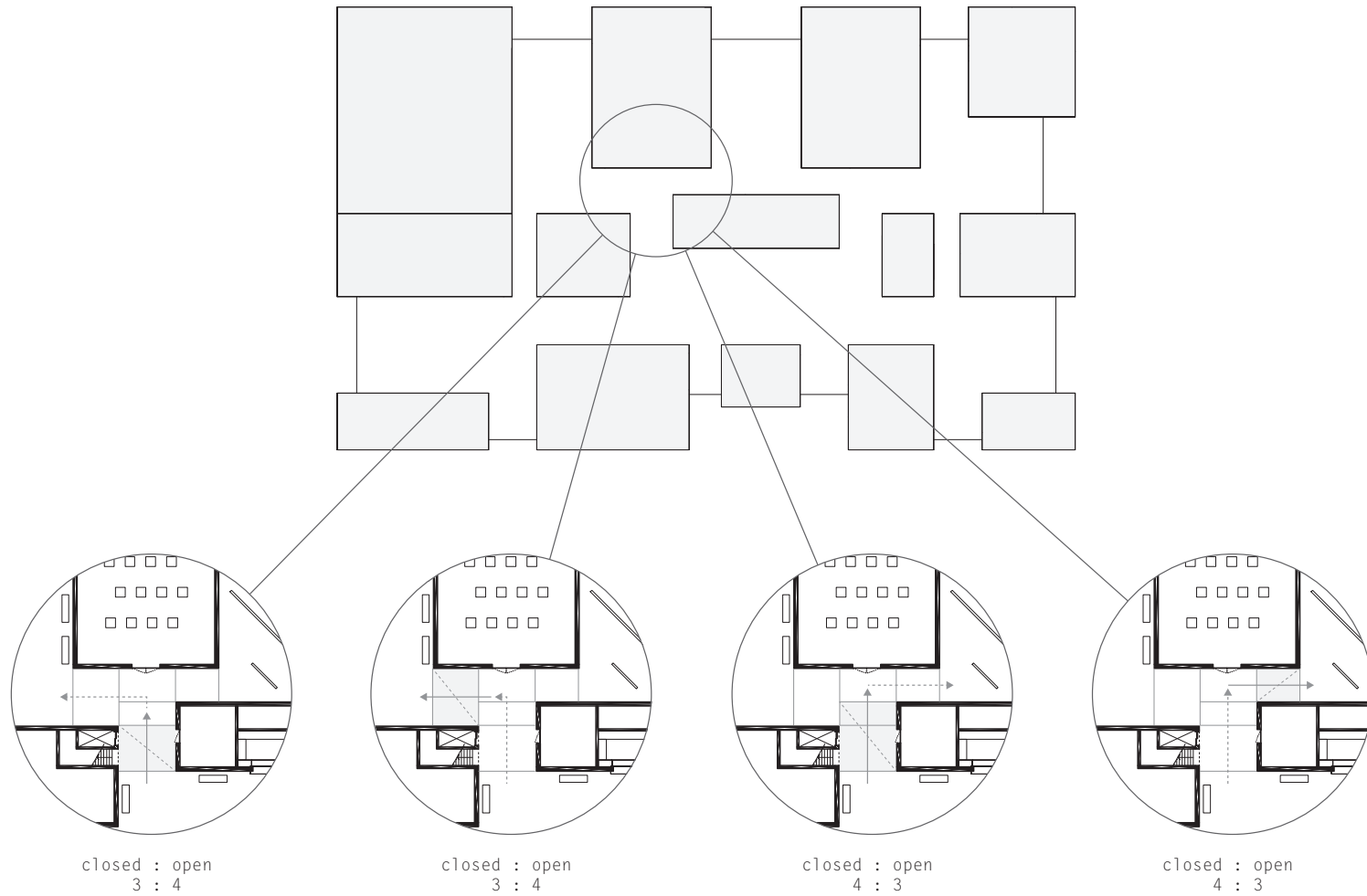
organization of program



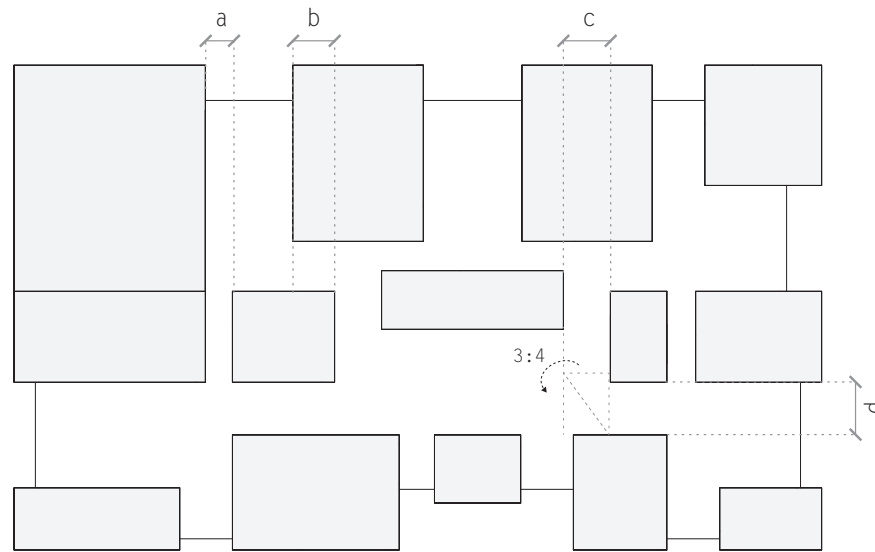
specific relations between parts of program



disposition enables flexible use of spaces



multiple use enhanced by hierarchy between spaces

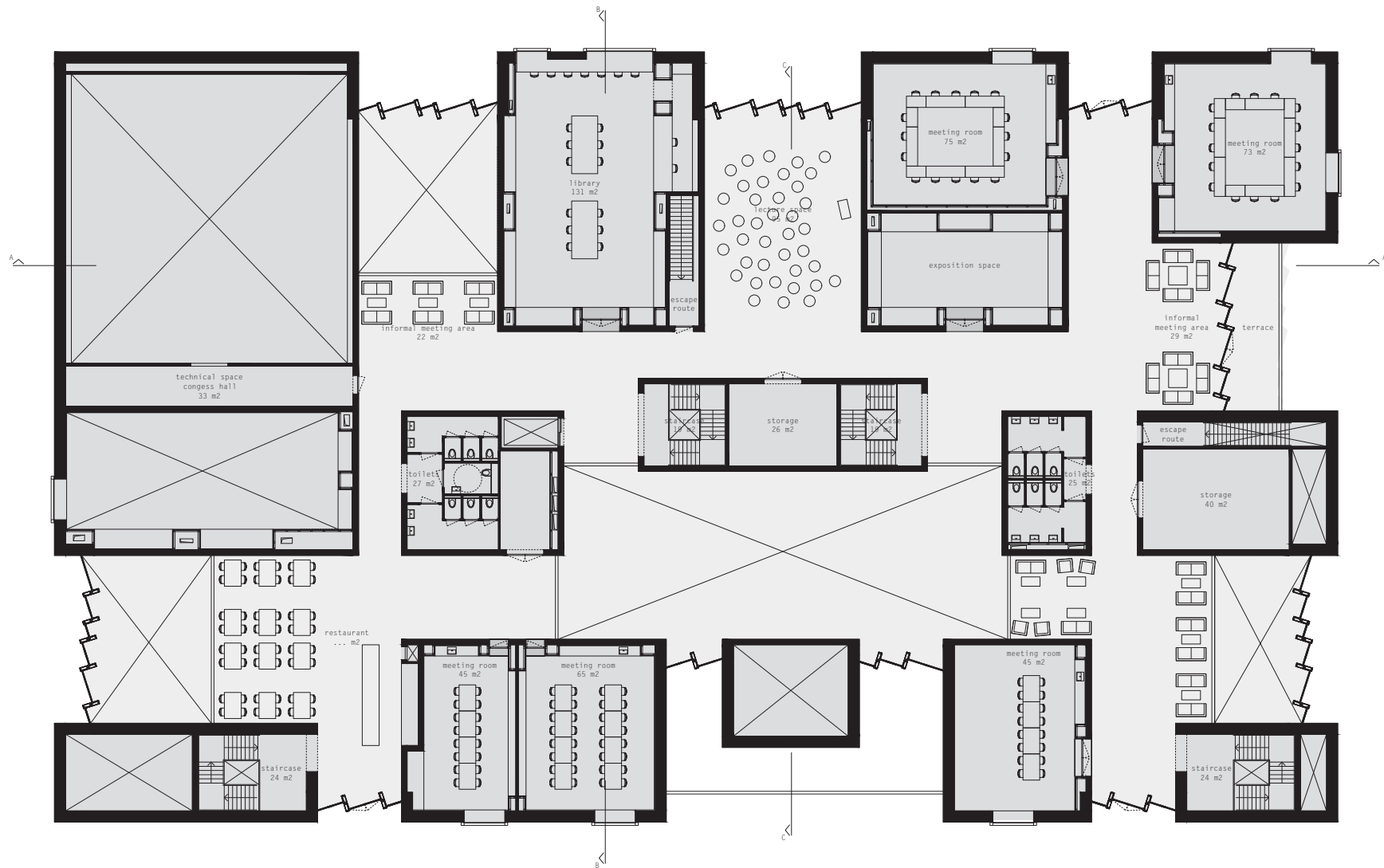


- a. 2,00 m.
  - b. 2,75 m.
  - c. 3,75 m.
  - d. 5,00 m.
- 

use of 3:4 in definition of passages

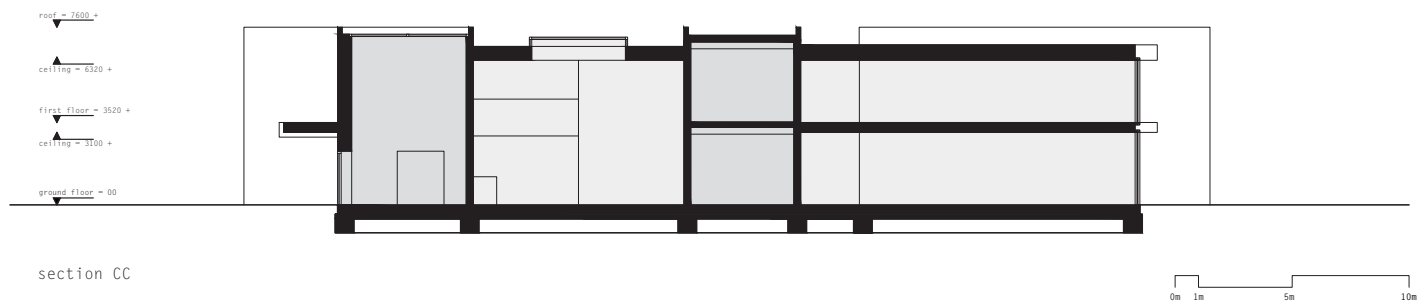
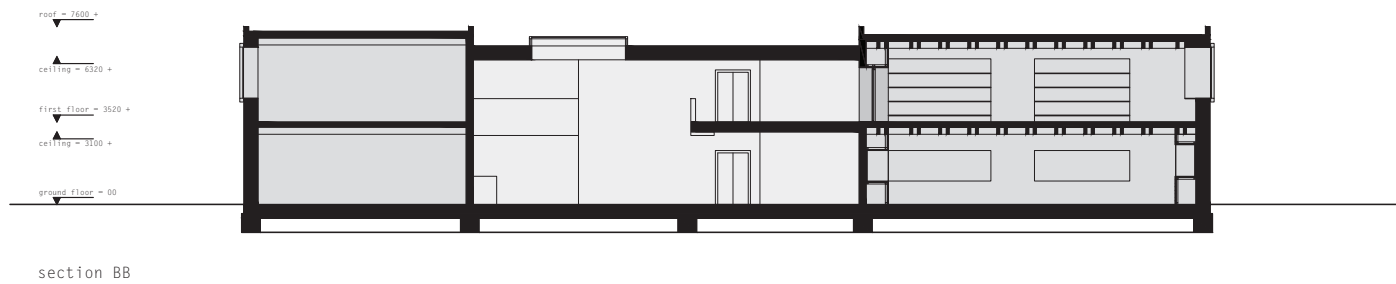
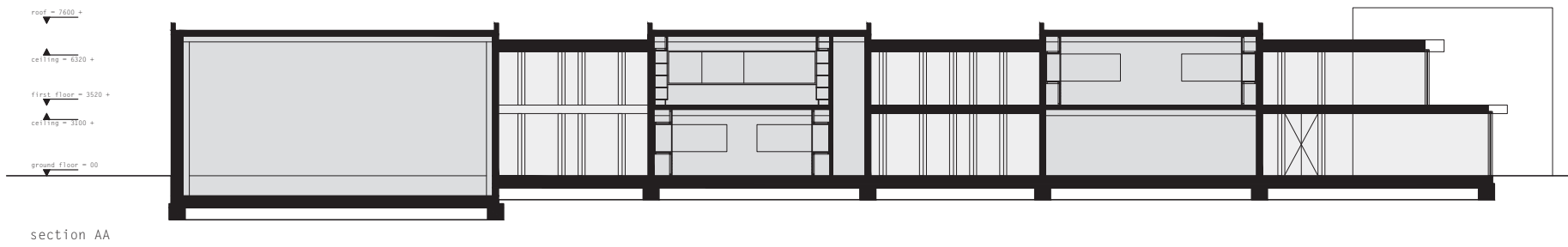


ground floor 1:200

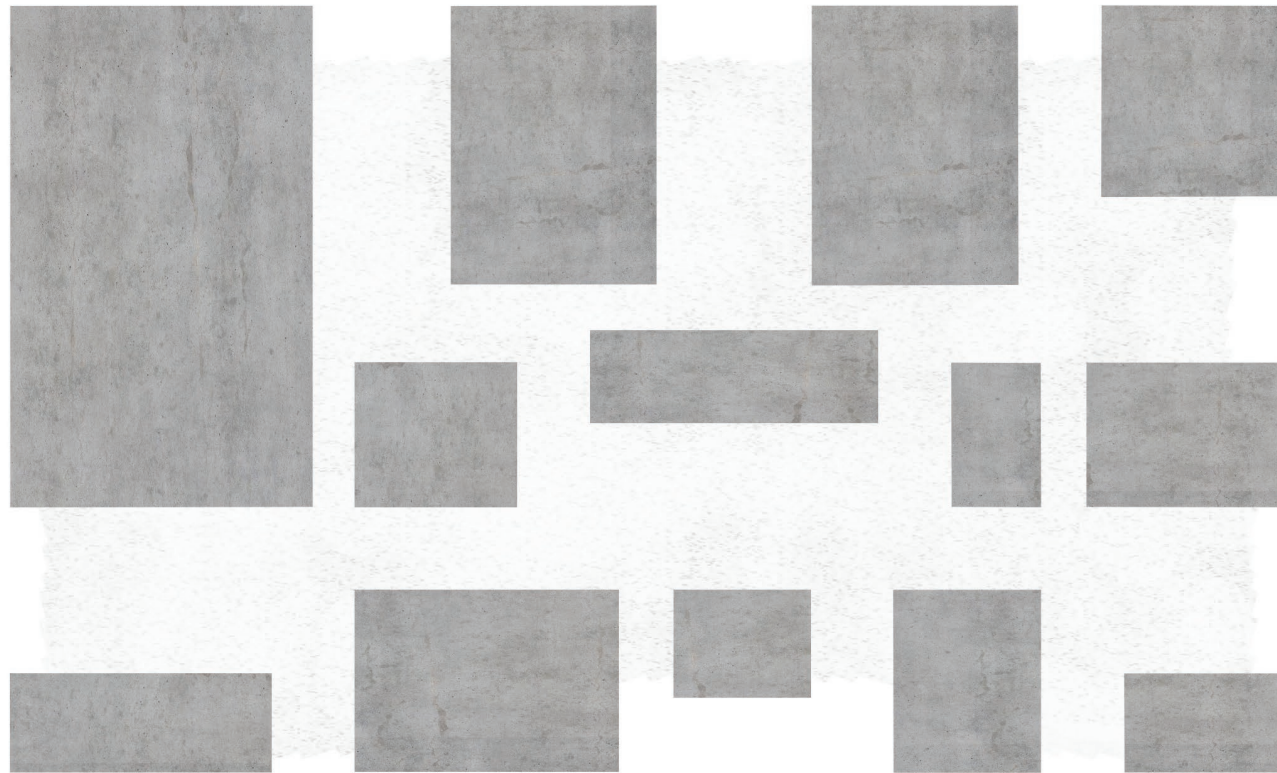


first floor 1:200

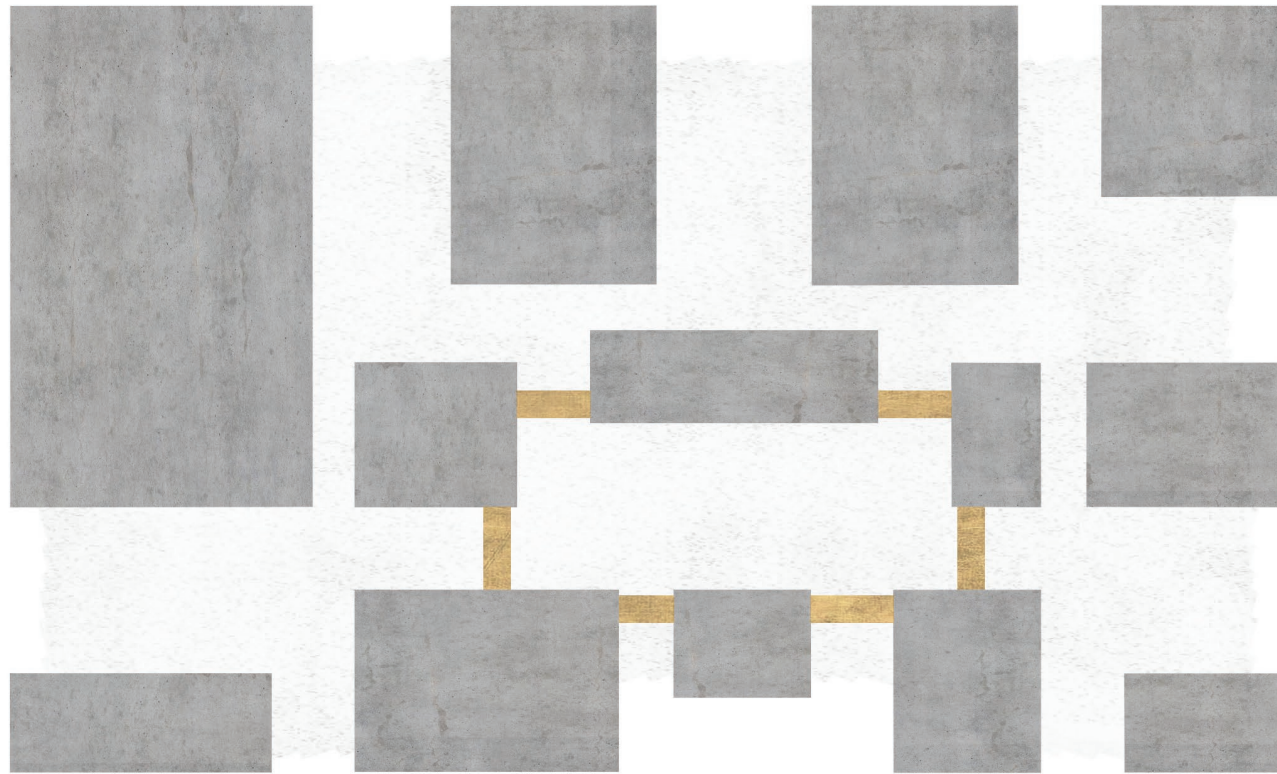




sections 1:200



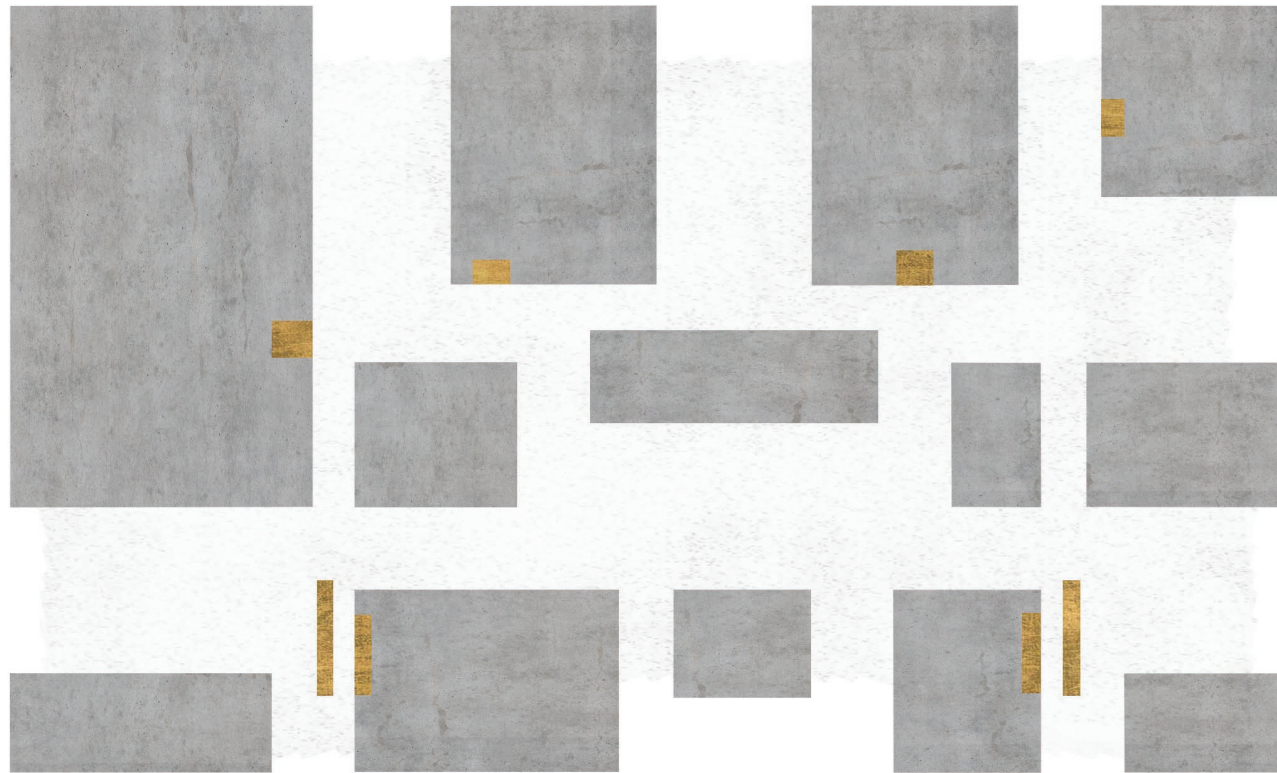
continuous space articulated by volumes



brass elements functioning as guidance



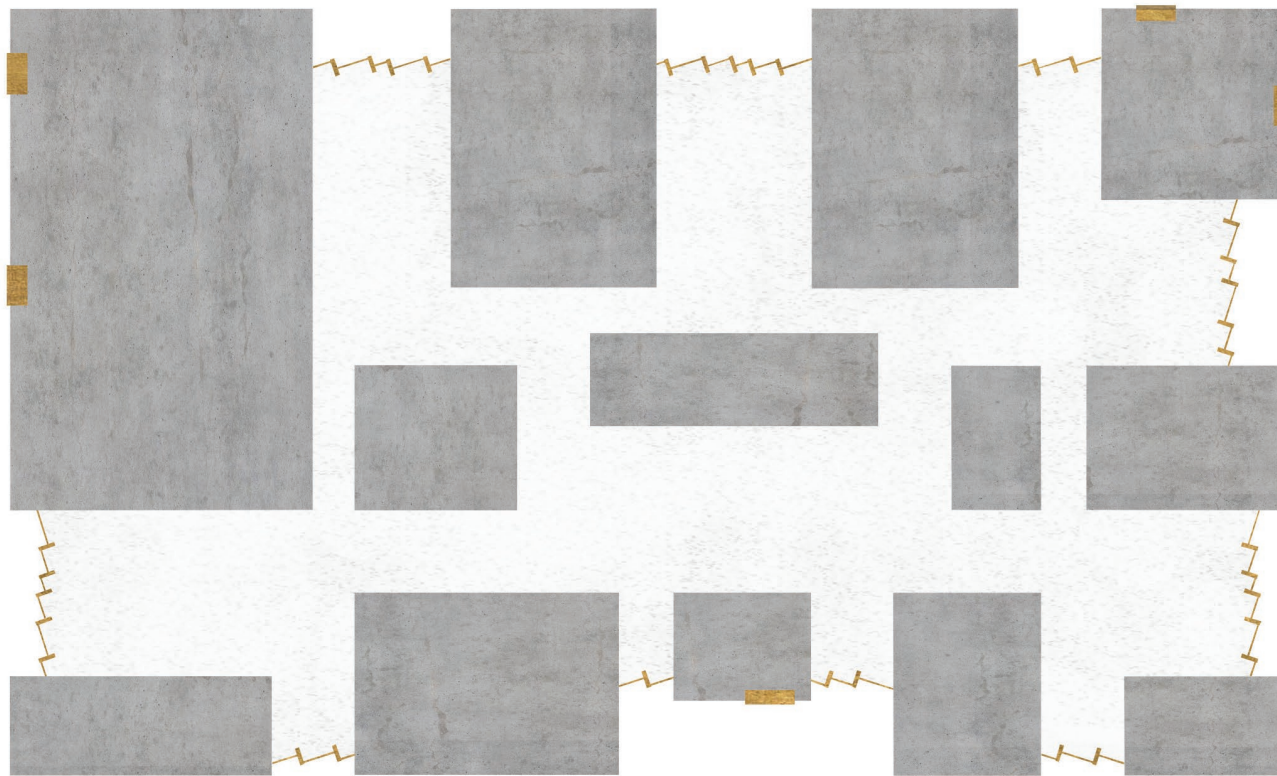
brass elements functioning as guidance



brass elements functioning as guidance



brass elements functioning as guidance

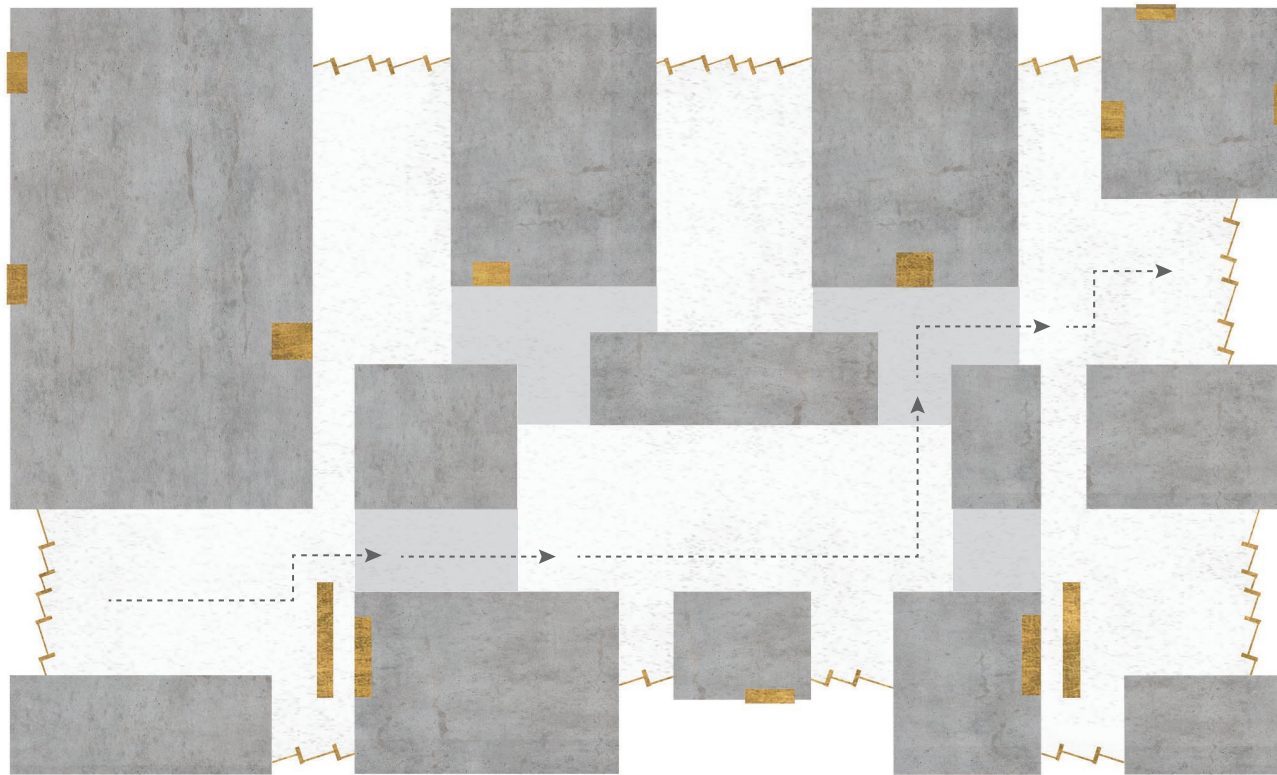


brass elements functioning as guidance

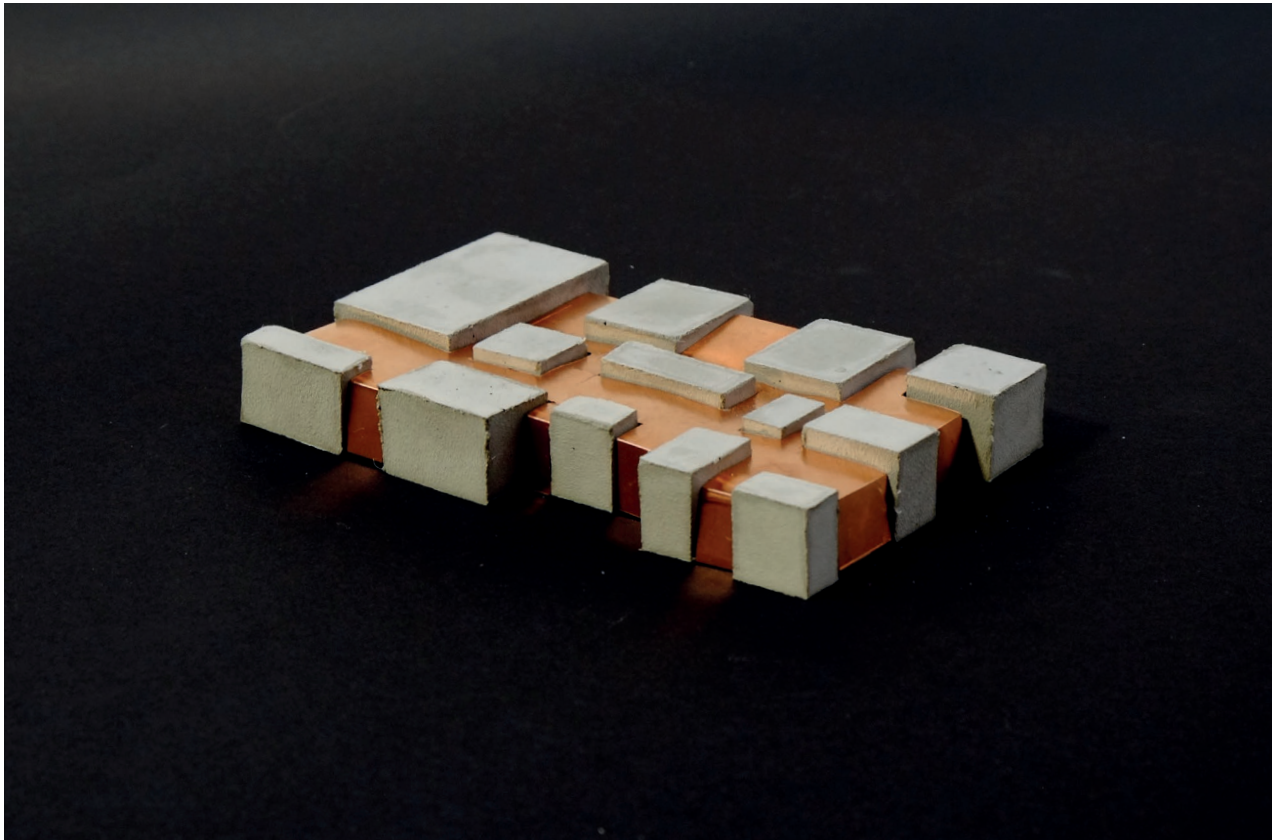


brass elements functioning as guidance

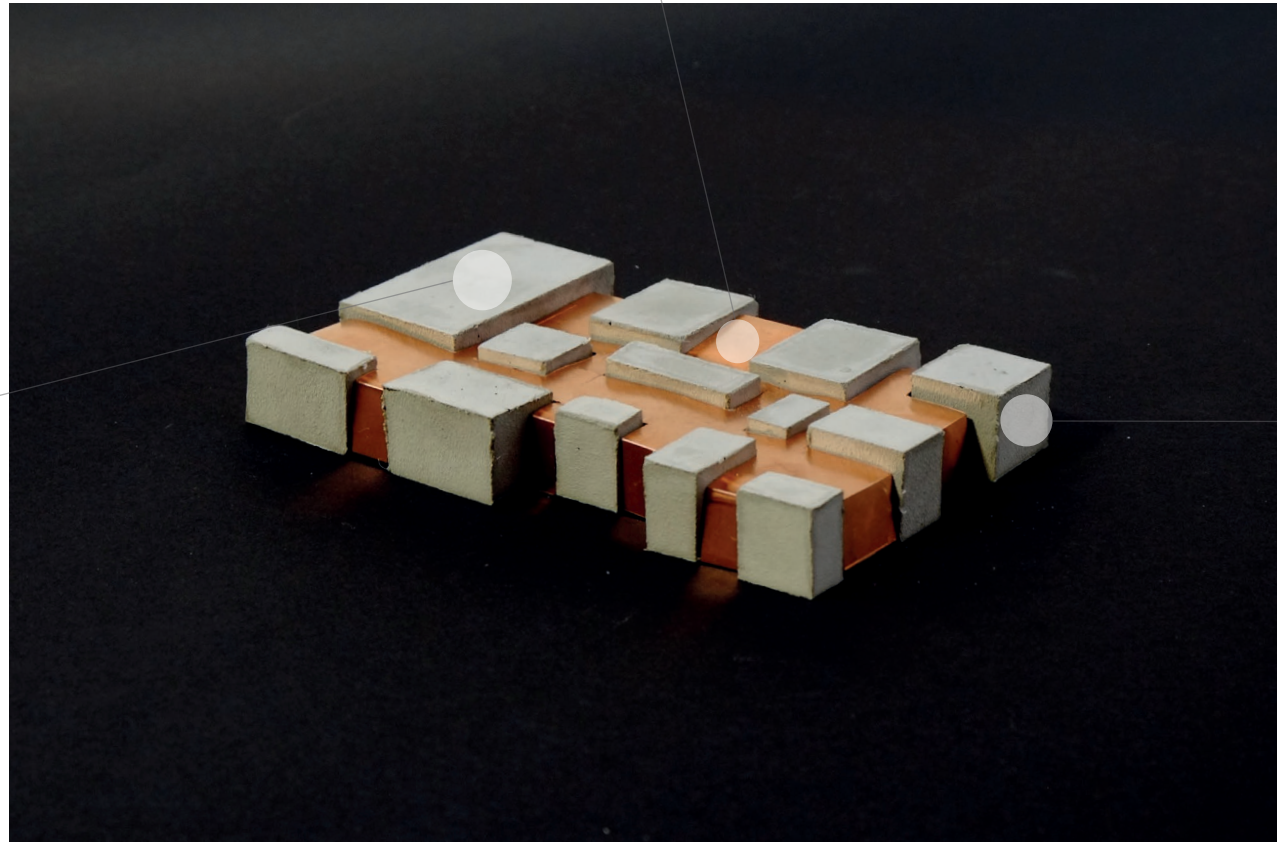




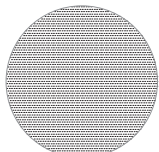
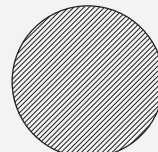
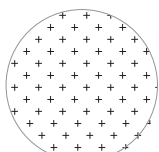

light/dark contrast in transition between spaces



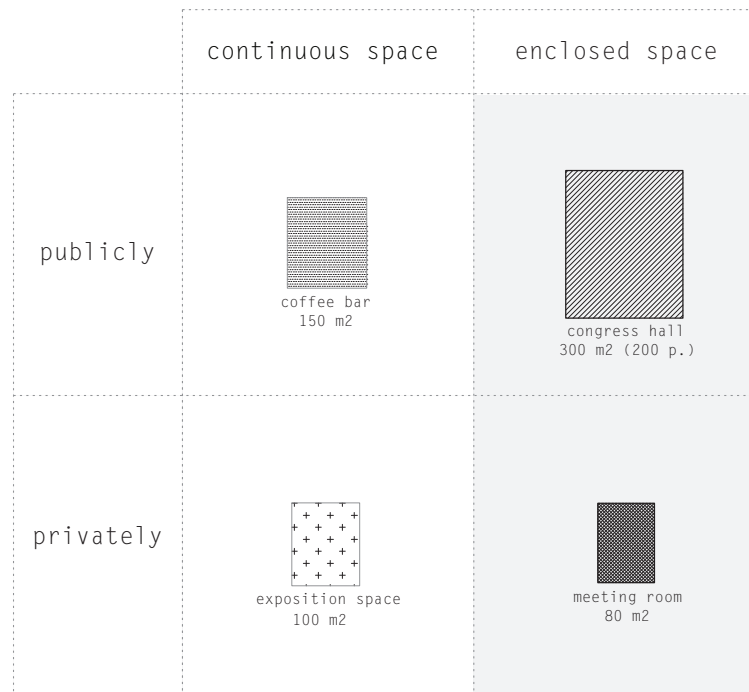
distinct atmospheres within building



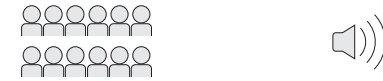
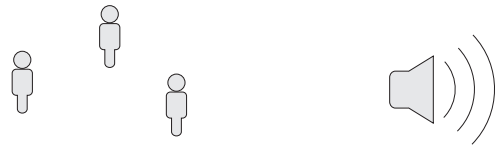
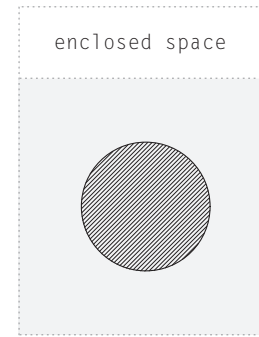
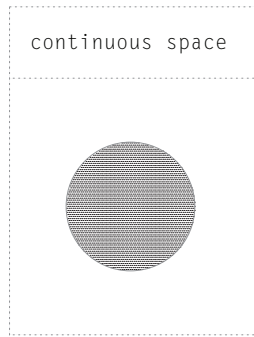
distinct atmospheres within building

	continuous space	enclosed space
publicly		
privately		

specific requirements of parts of program



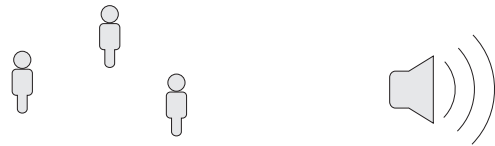
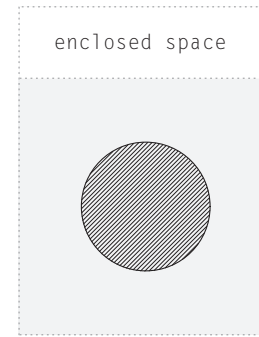
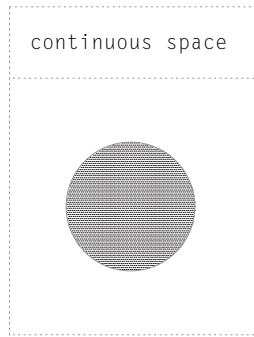
specific requirements of parts of program



continuous open space; no peak moments in usage  
noise levels suited for public character

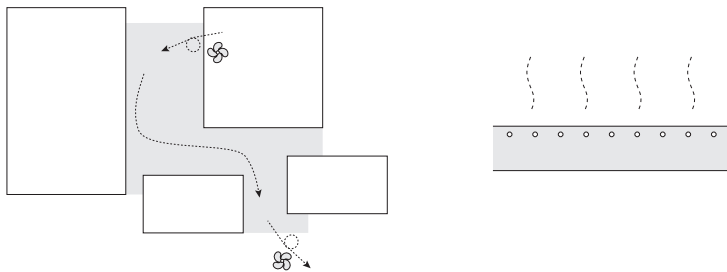
small enclosed space; peak moments in usage  
noise levels suited for intimate character

specific requirements of parts of program

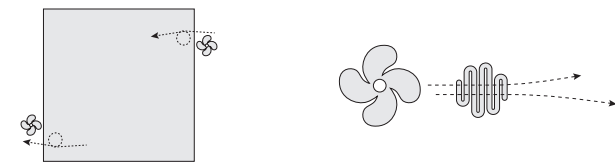


continuous open space; no peak moments in usage  
noise levels suited for public character

small enclosed space; peak moments in usage  
noise levels suited for intimate character

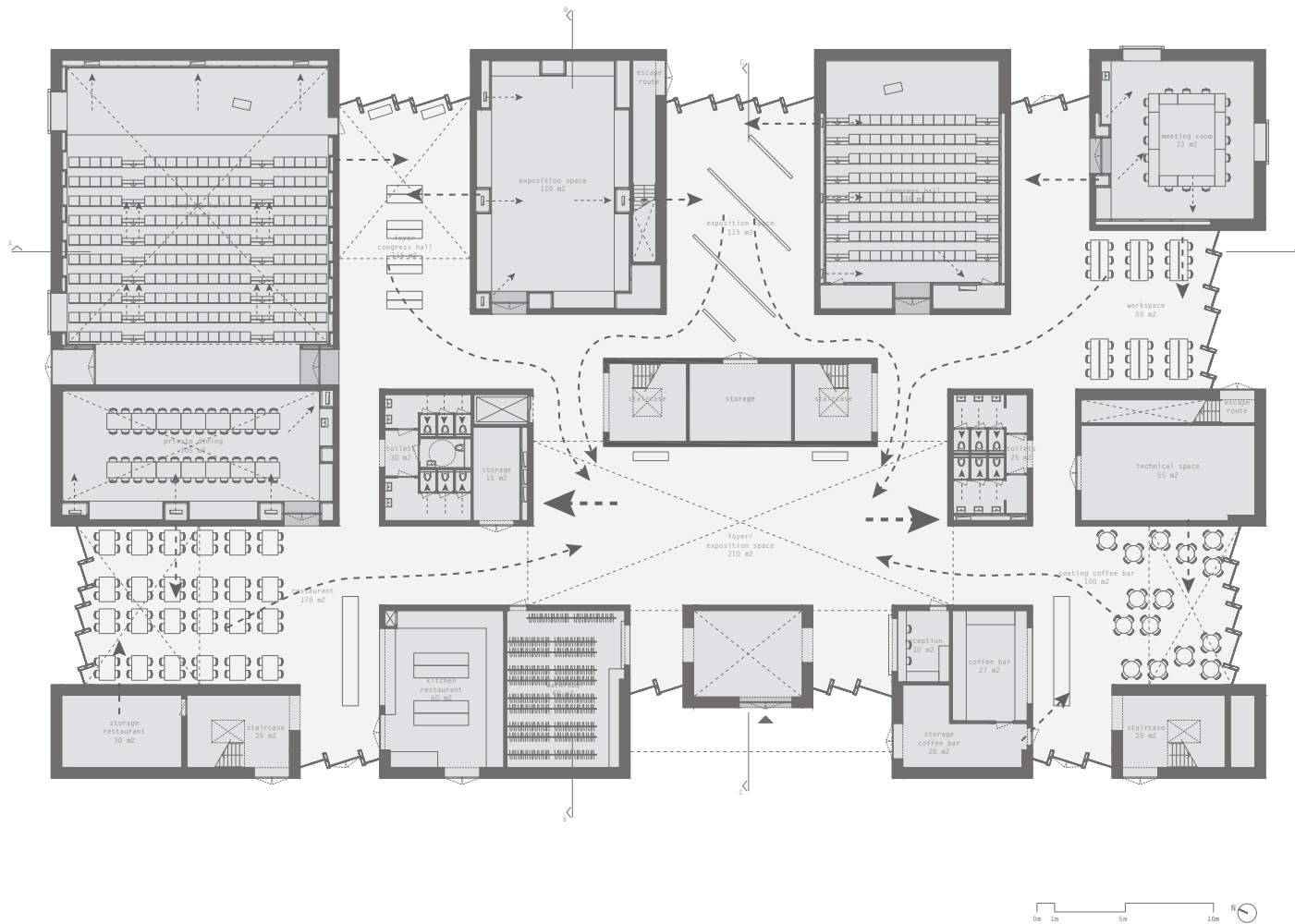


one ventilation system for continuous space  
concrete core activation; constant climate



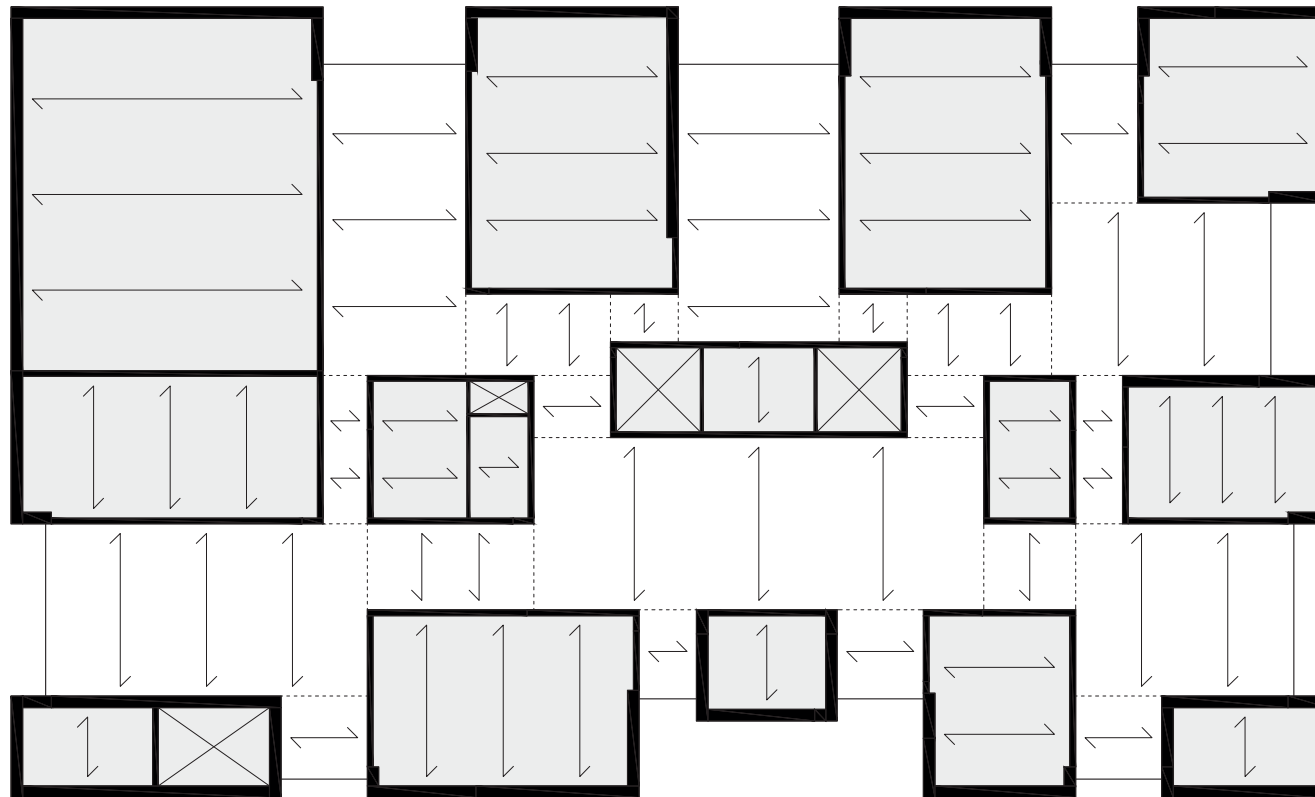
separate ventilation system per volume  
vector heating/cooling; absorbs peaks in temperature

specific requirements of parts of program

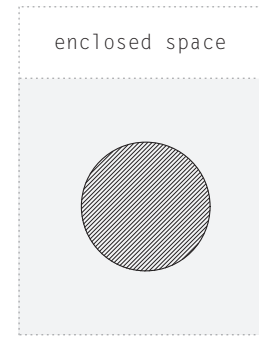
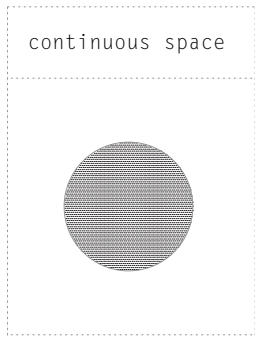


climatological system





structural system



smooth exposed concrete walls  
terrazzo floor  
acoustic stucco ceiling  
brass elements

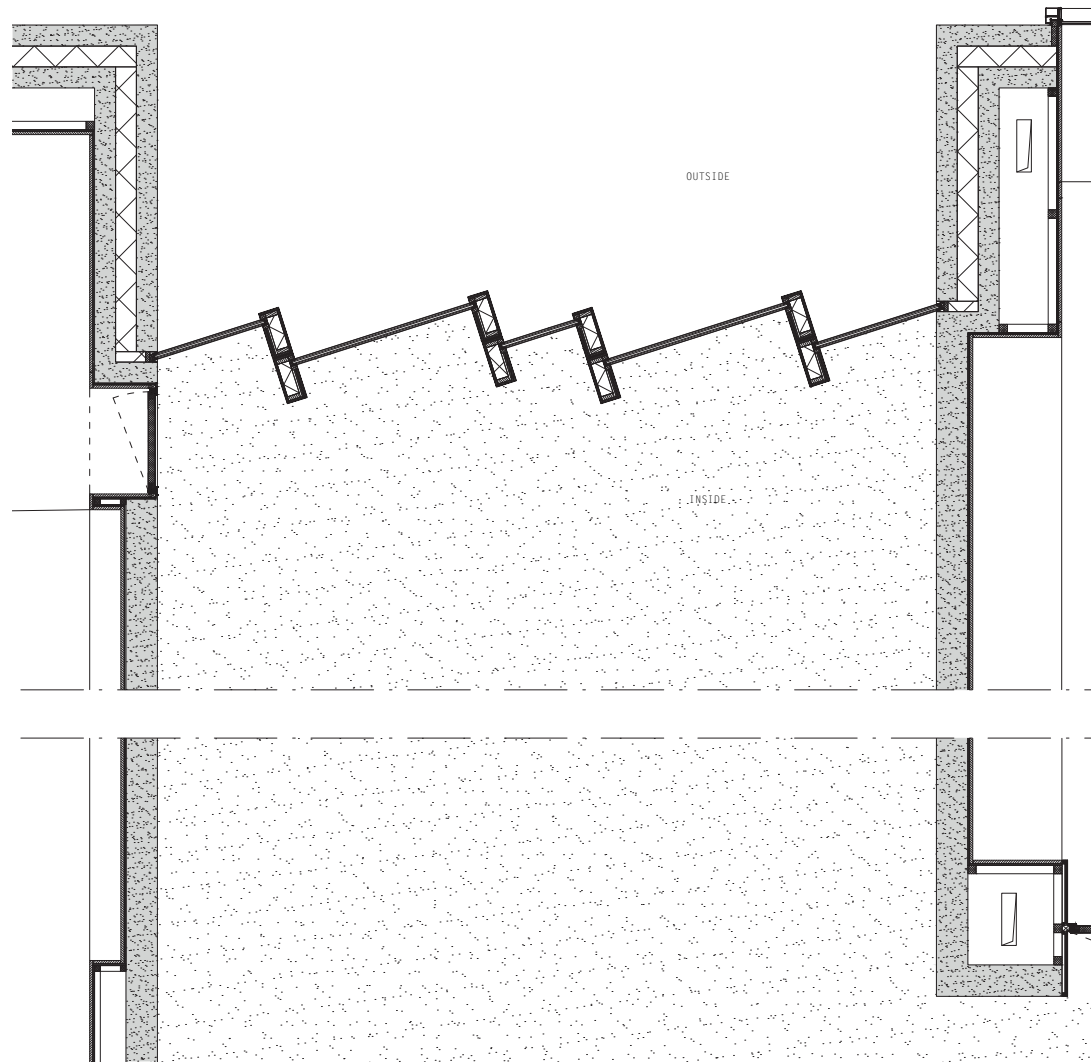


wooden planks on wall, integrated furniture pieces  
wooden floor  
acoustic panels in between wooden beams  
brass elements

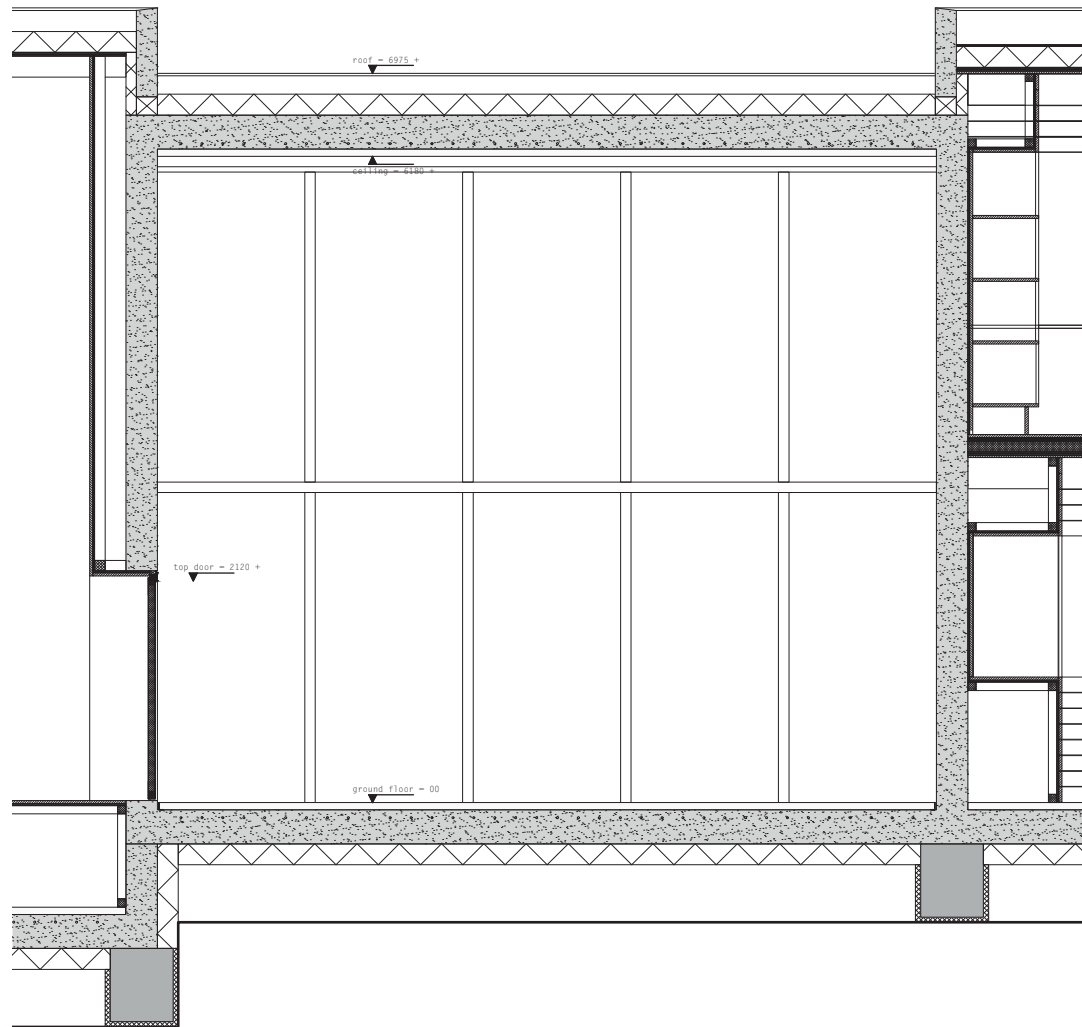
generic vs specific character of spaces



continuous space



horizontal fragment continuous space 1:50



vertical fragment continuous space 1:50



brass threshold defining transition between spaces

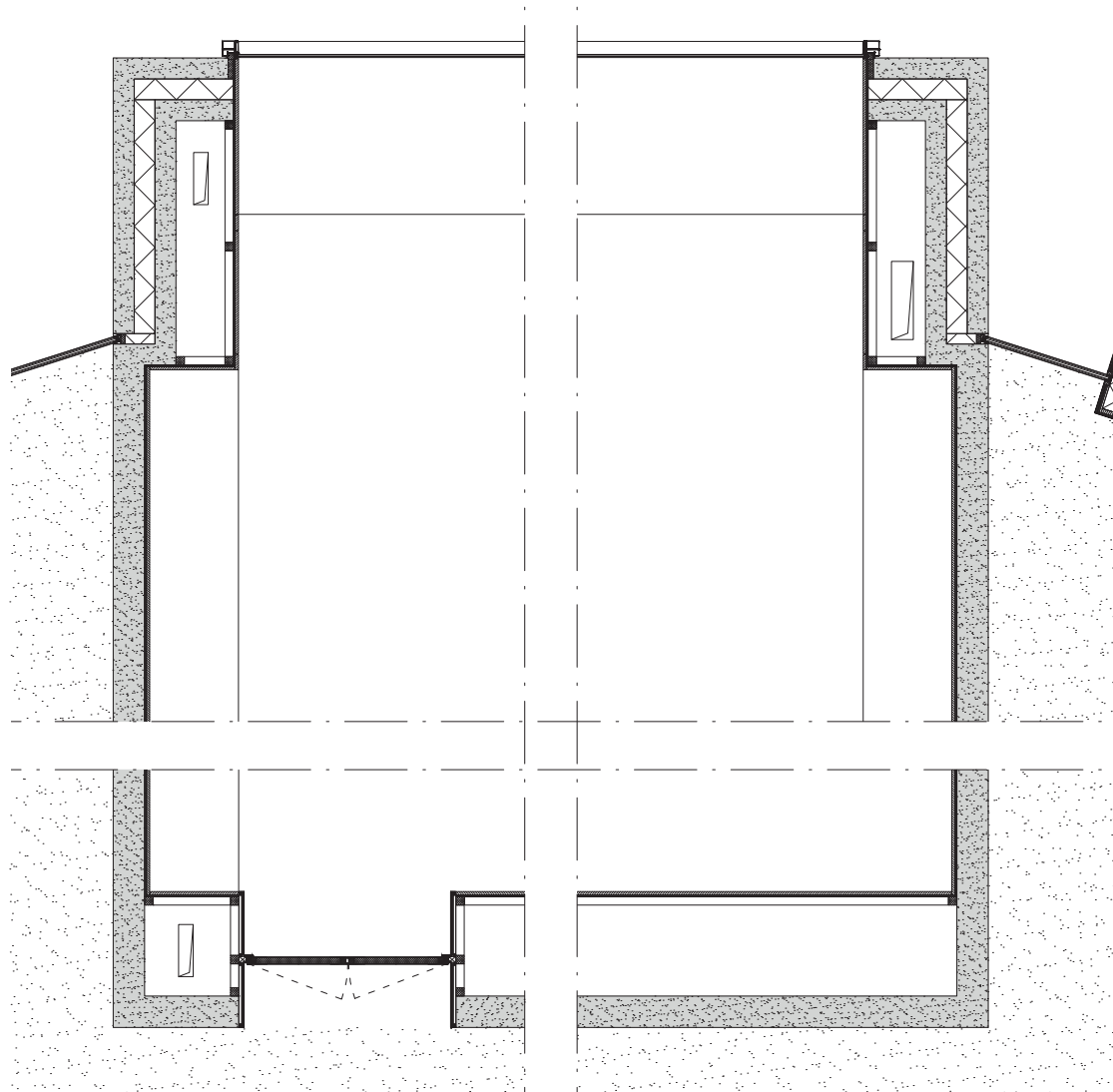


brass threshold defining transition between spaces

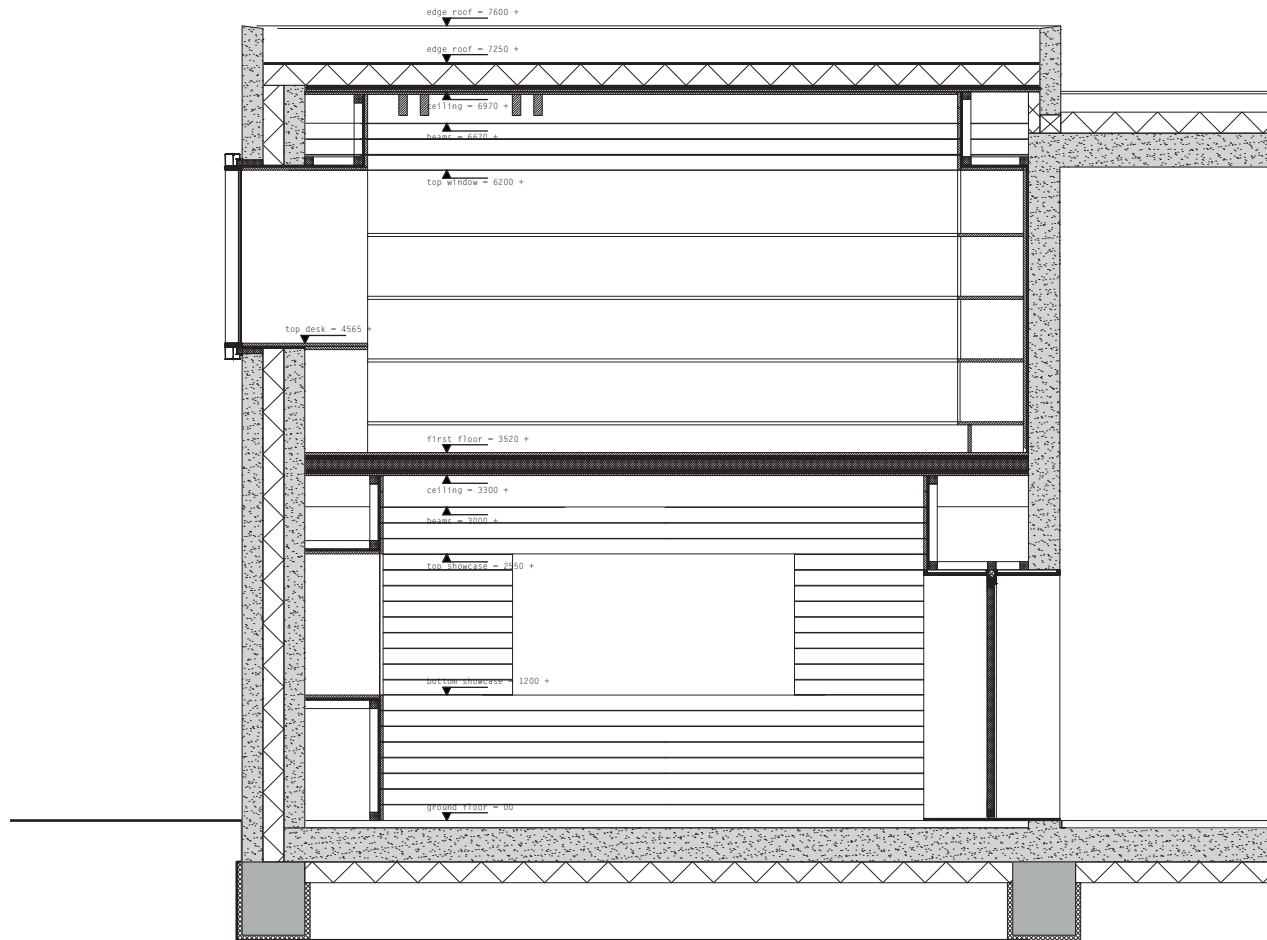


interior of volume; library

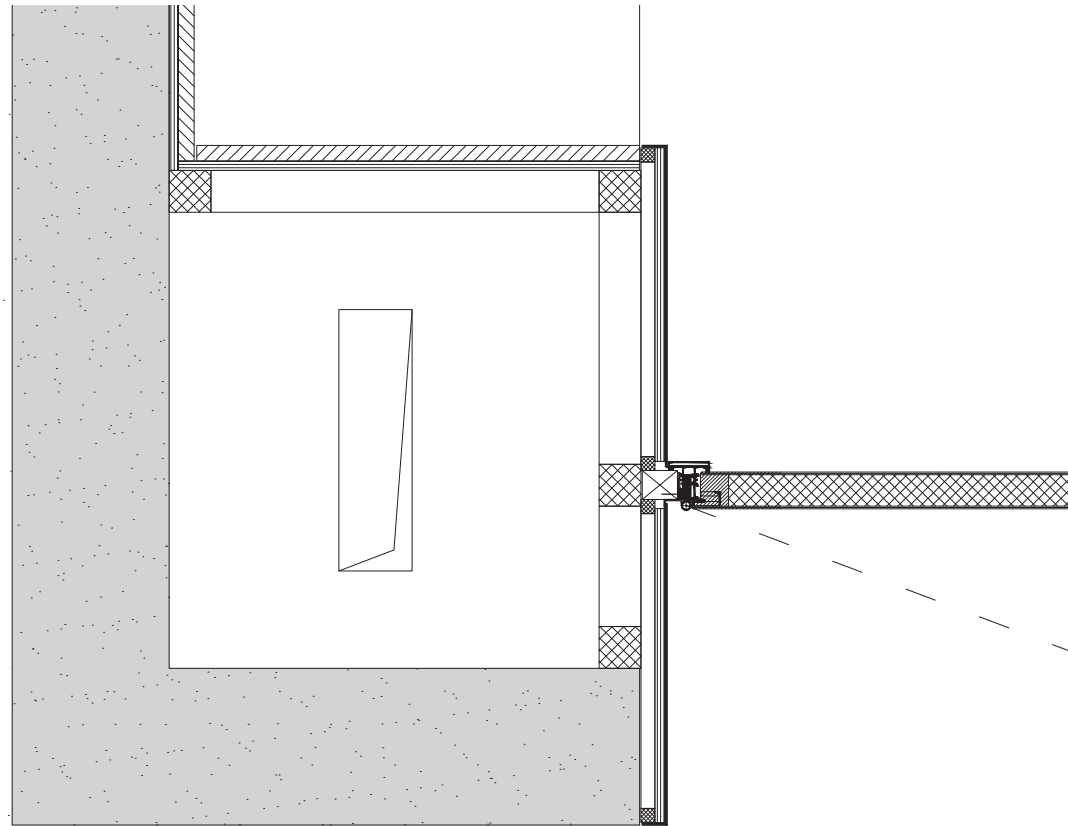




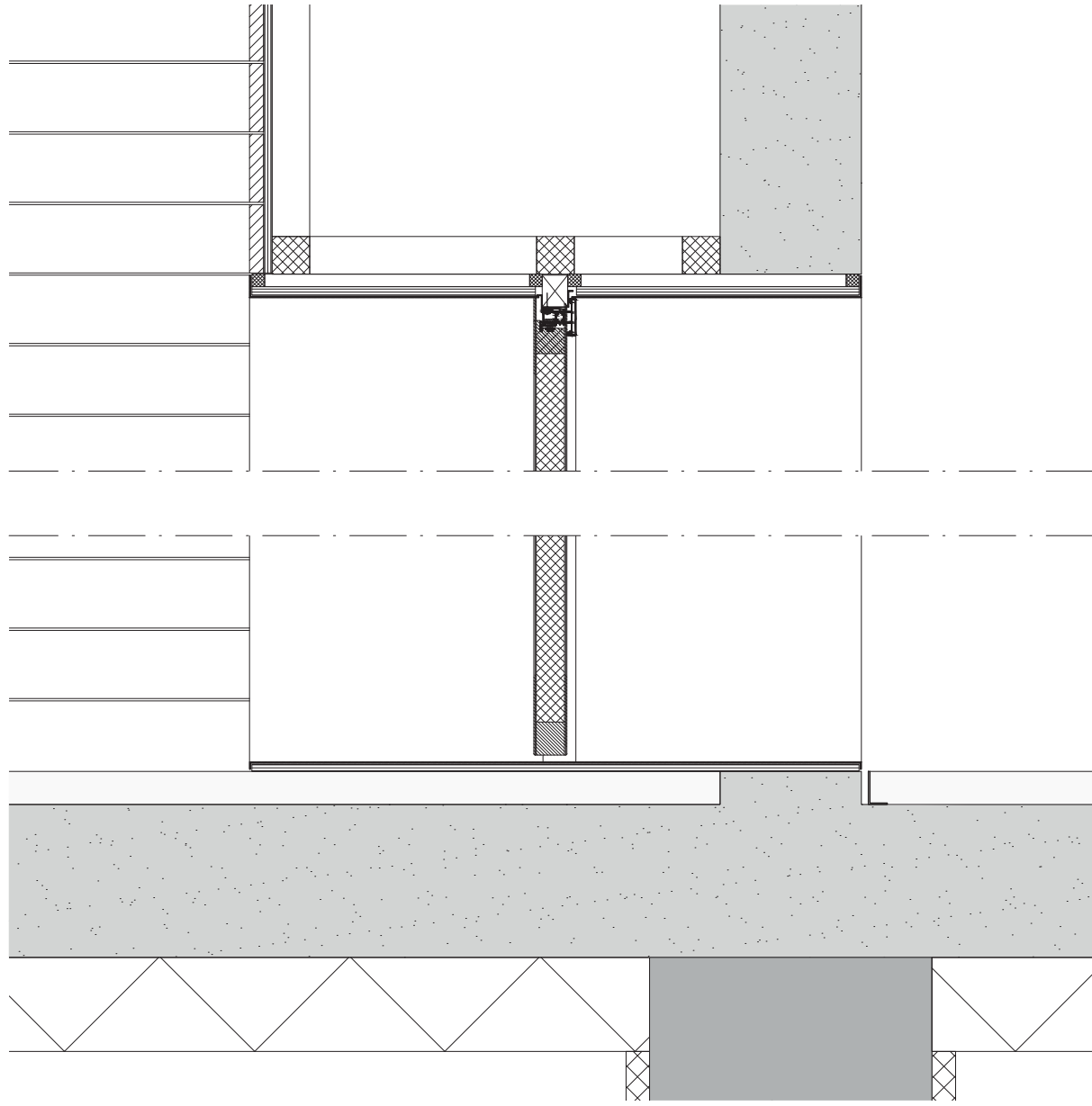
horizontal fragment volume 1:50



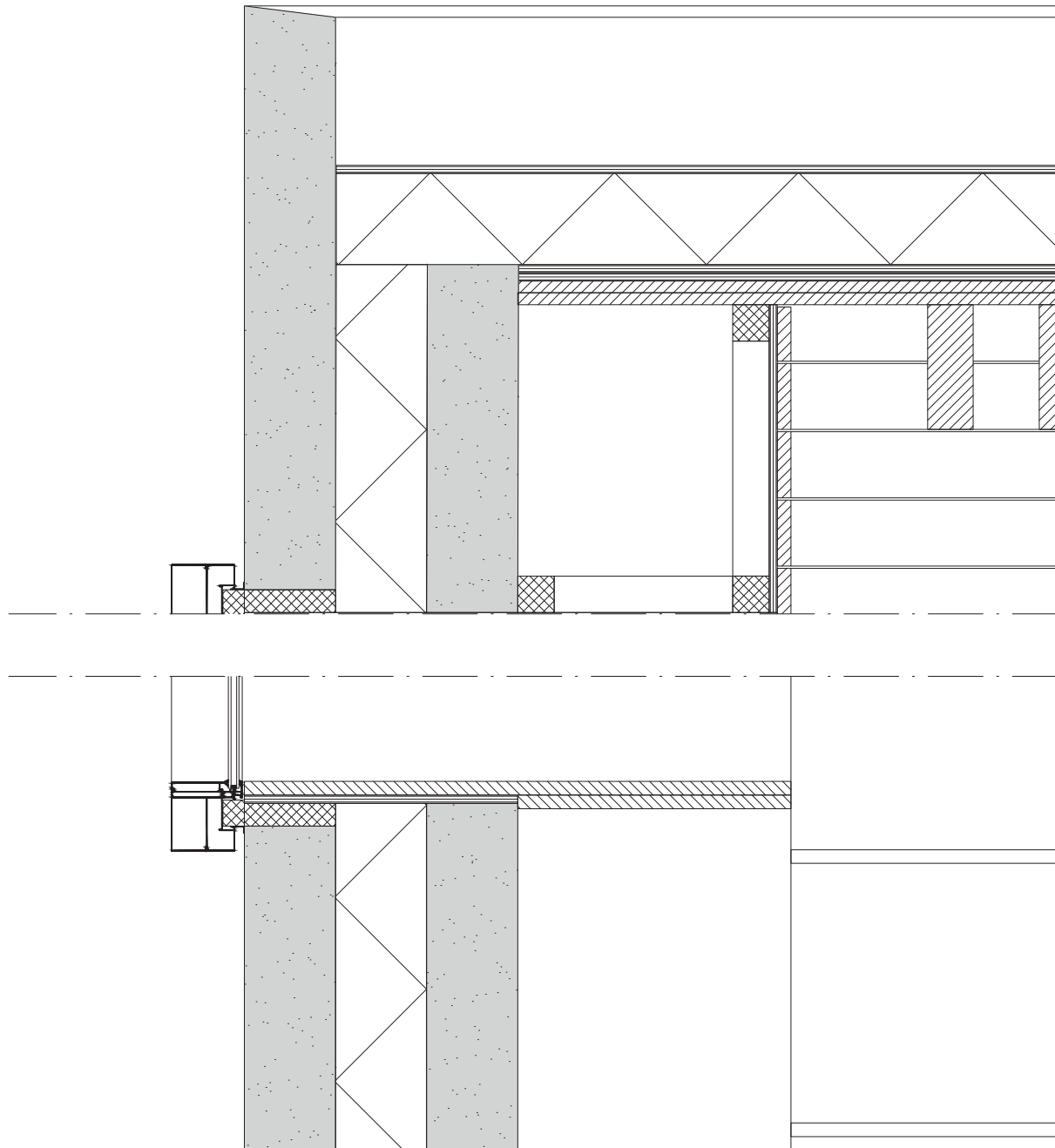
vertical fragment volume 1:50



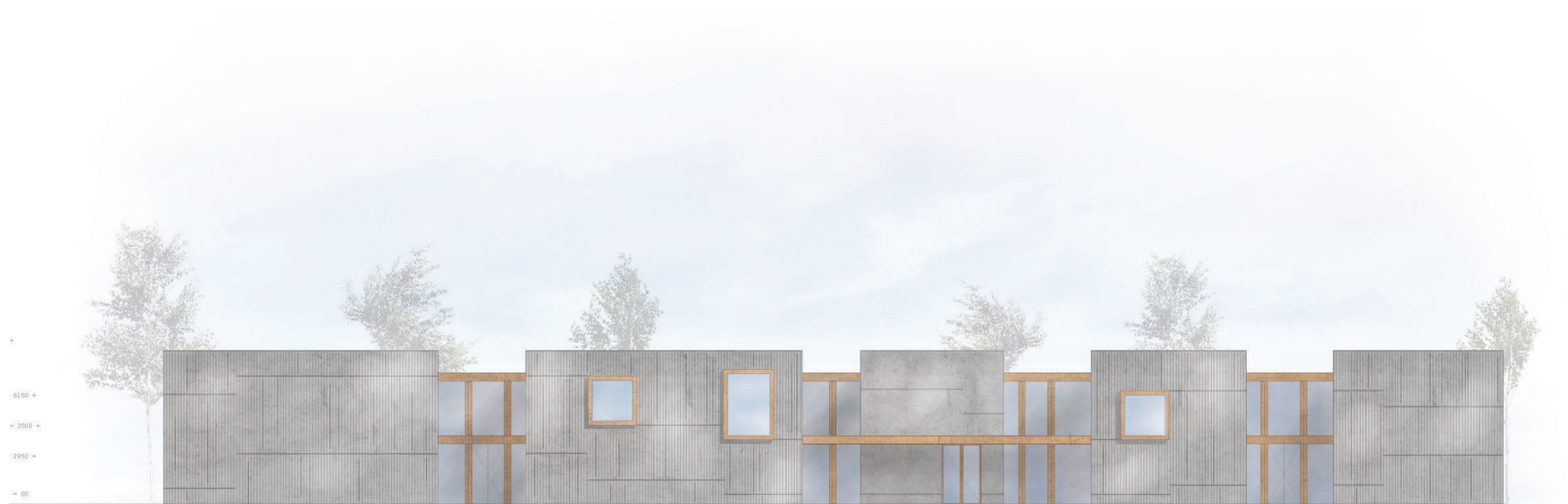
horizontal detail volume 1:10



vertical detail volume 1:10



vertical detail facade 1:10



levation

west elevation 1:200



mock-up facade 1:33



mock-up facade 1:33





rough exposed concrete walls  
brass elements leaving stains



smooth exposed concrete walls  
terrazzo floor  
acoustic stucco ceiling  
brass elements



wooden planks on wall, integrated furniture pieces  
wooden floor  
acoustic panels in between wooden beams  
brass elements

generic vs specific character of spaces

campus roosenberg

