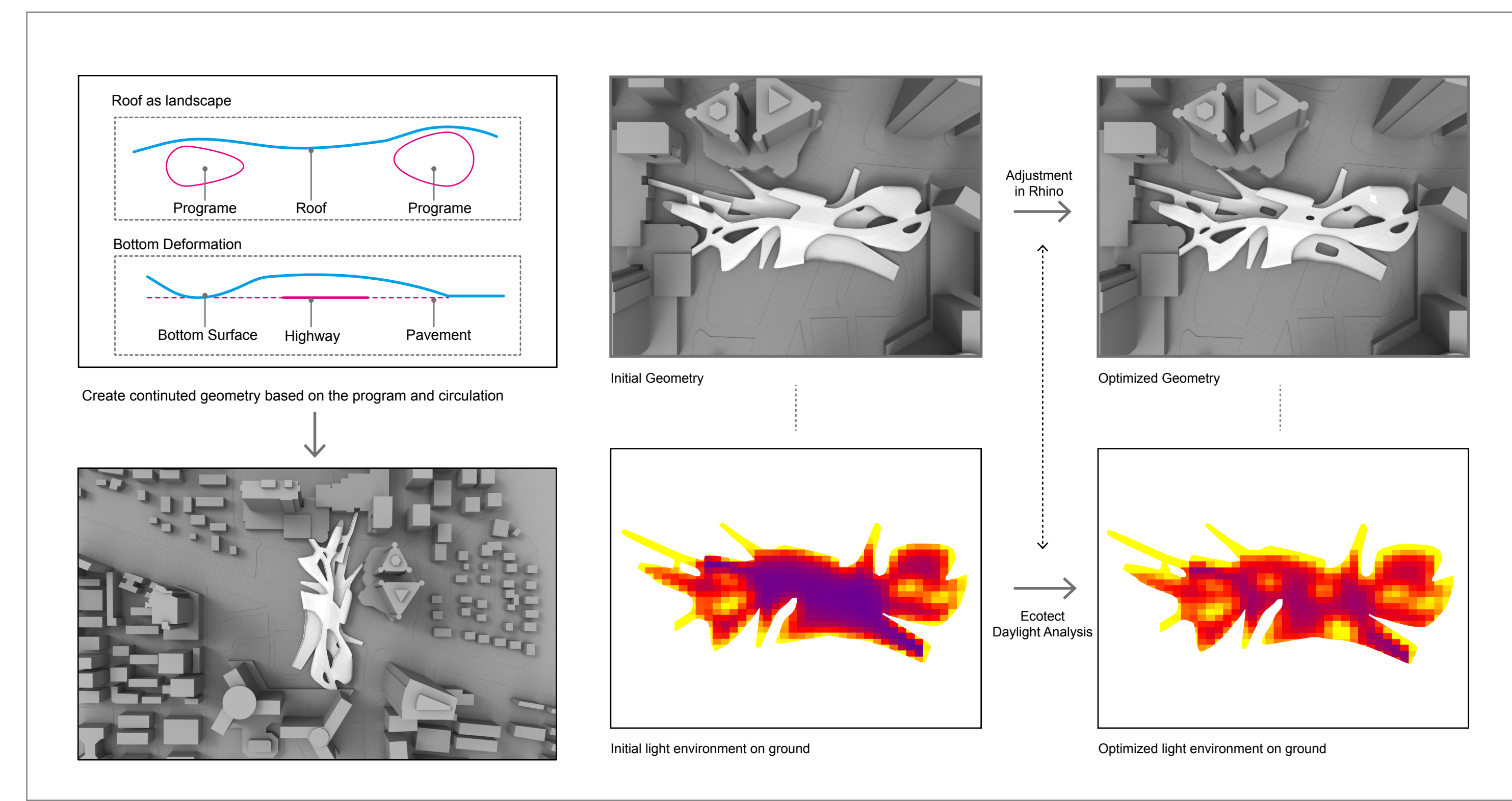
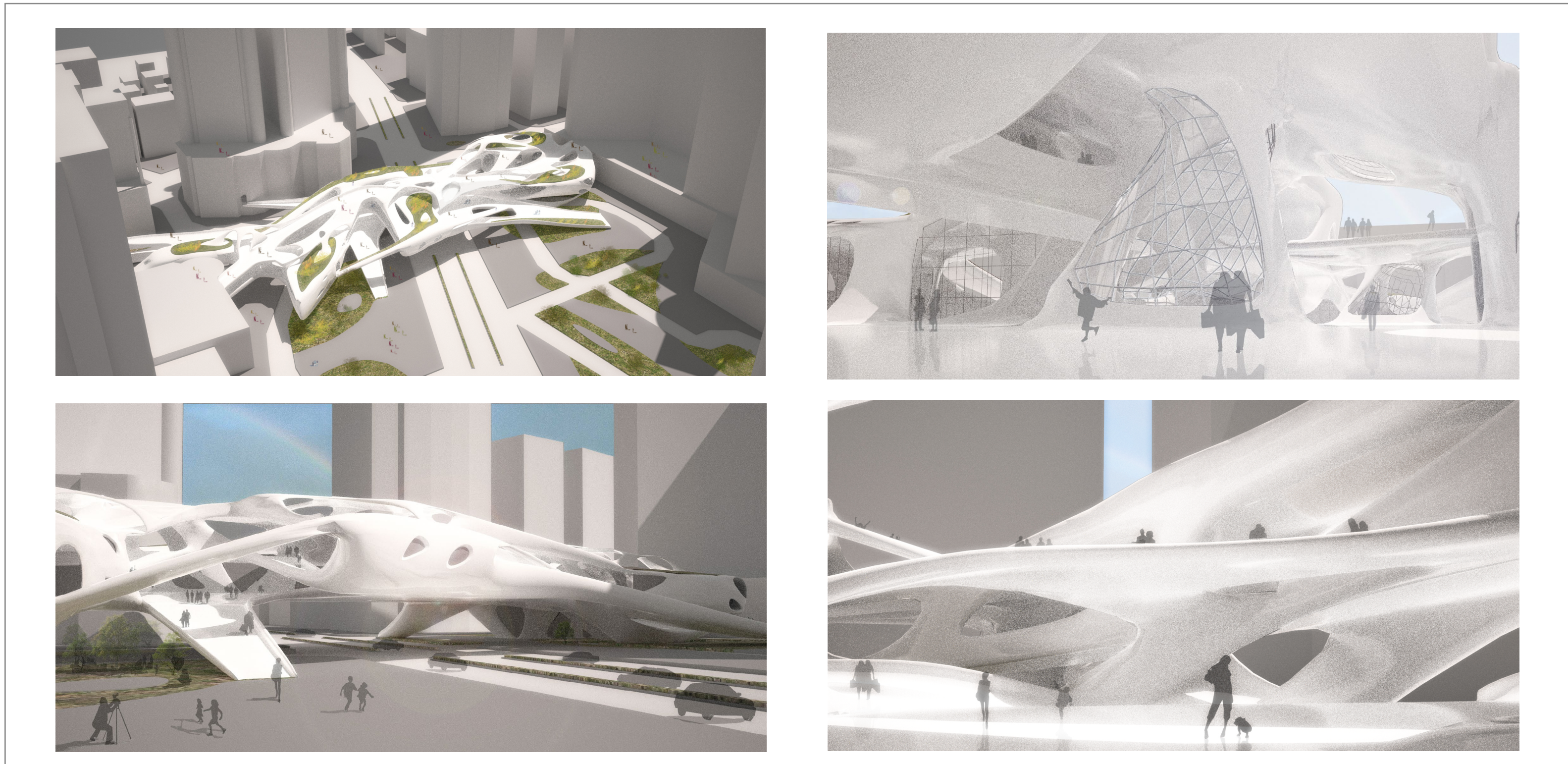


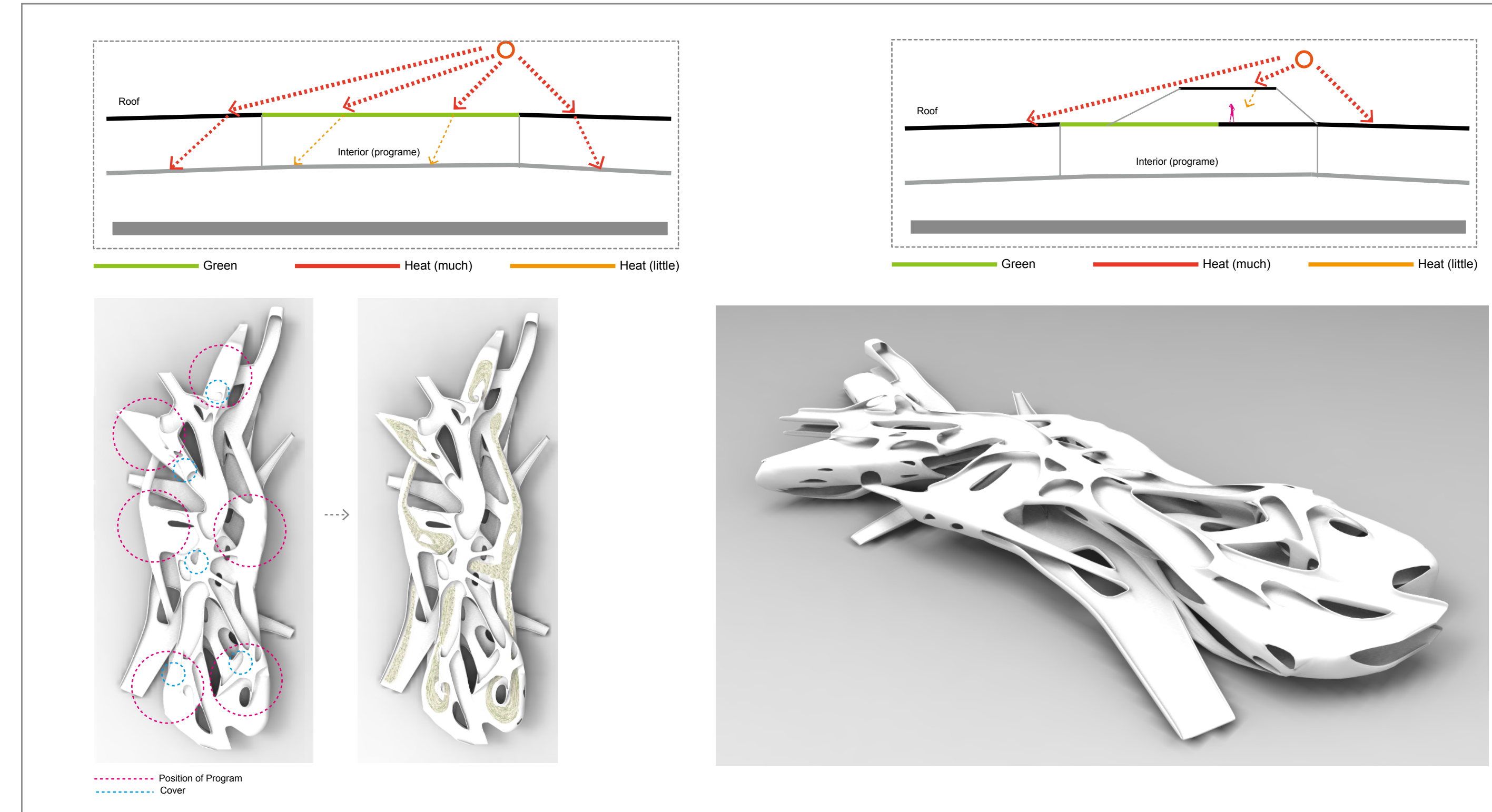
Computational Strategy - Self-organizing System



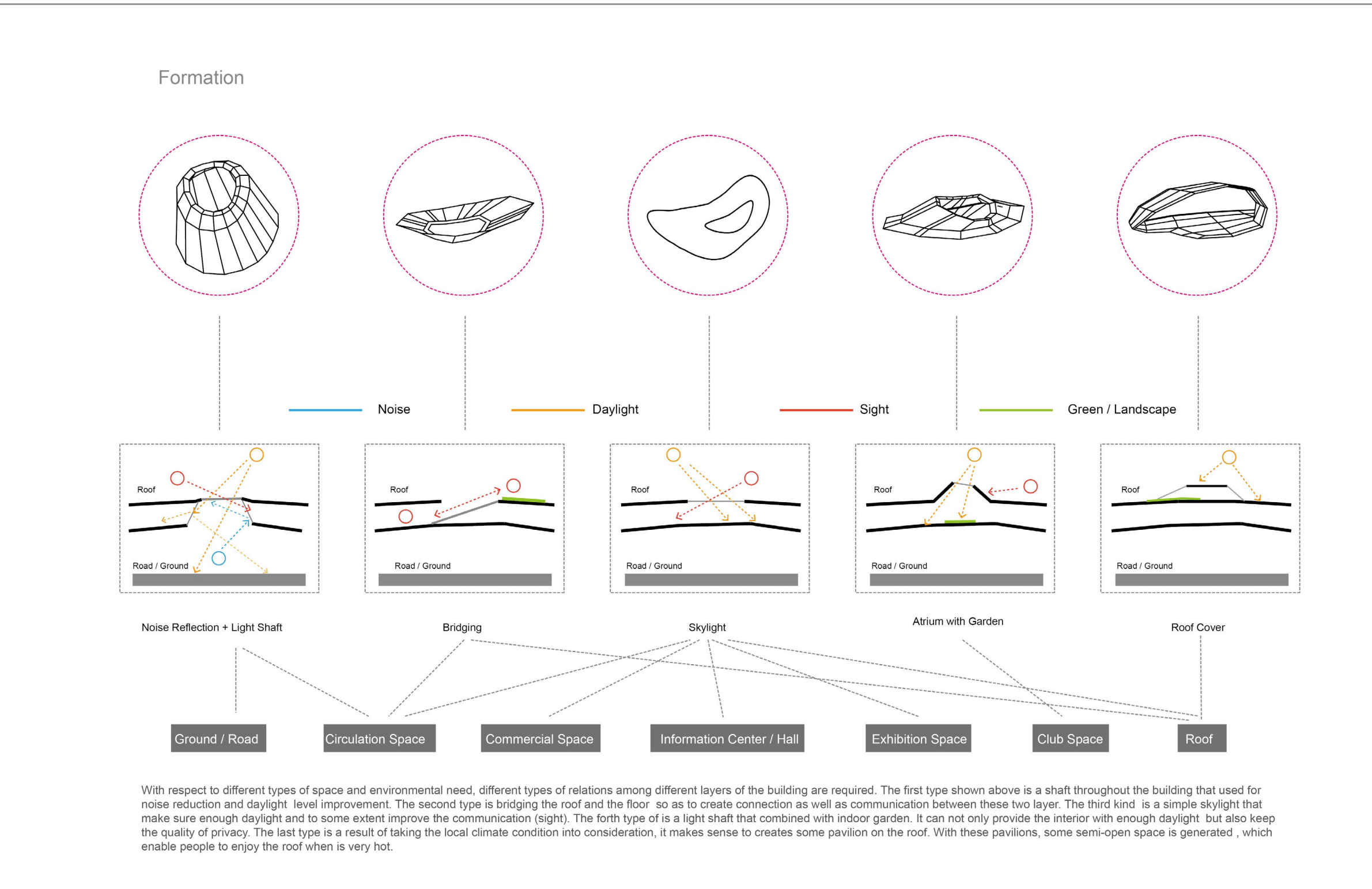
Form-finding & Daylight Optimization



Renderings



Spatial Logics

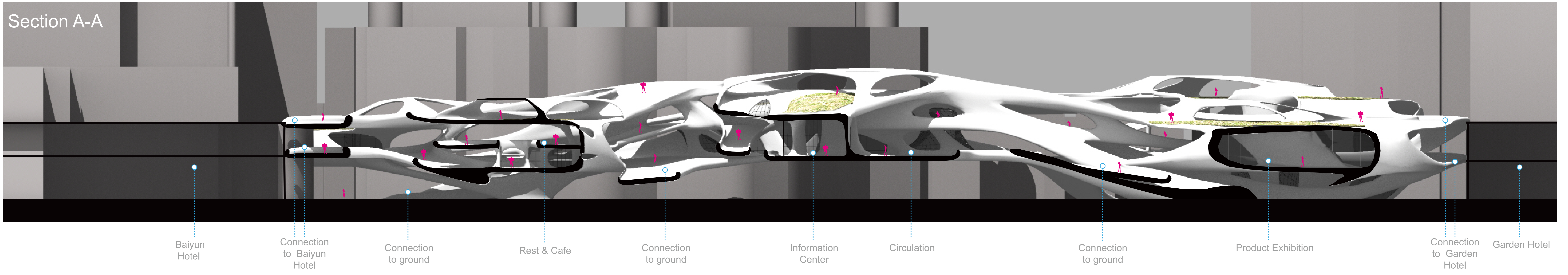


Renderings

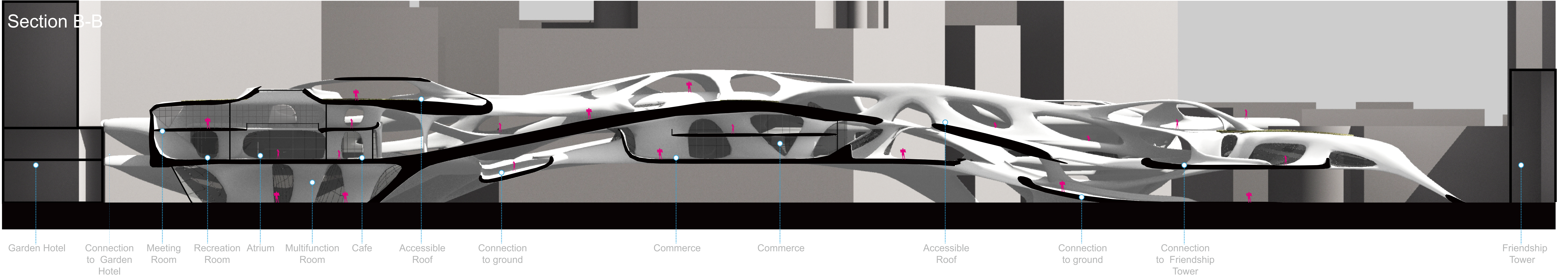


Physical Model

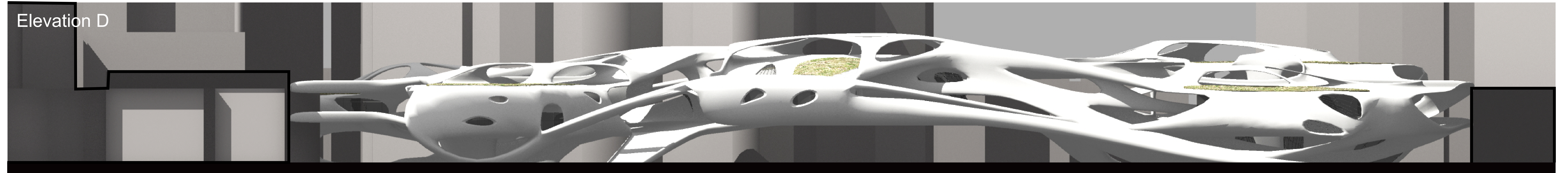
Section A-A



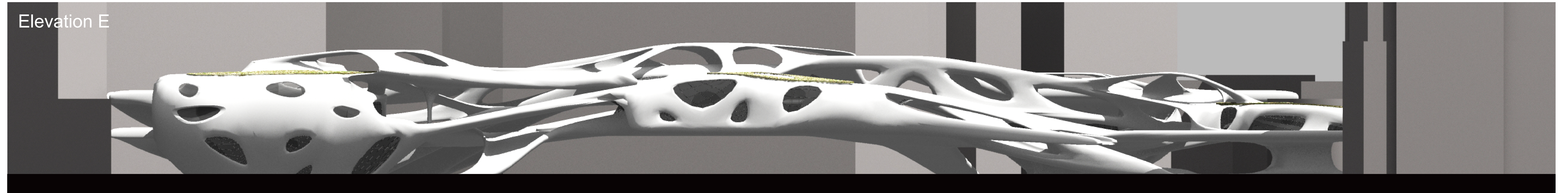
Section B-B

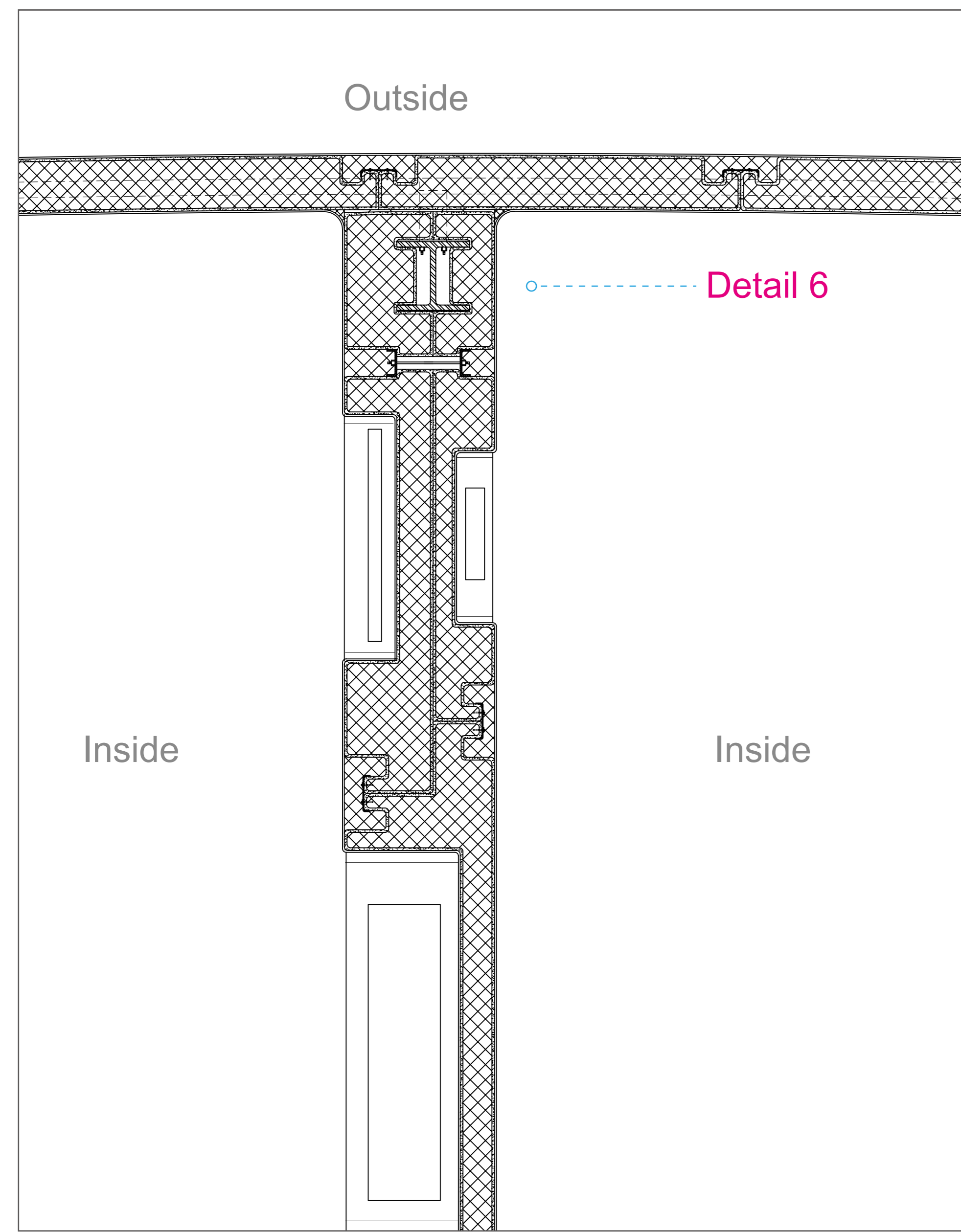


Elevation D

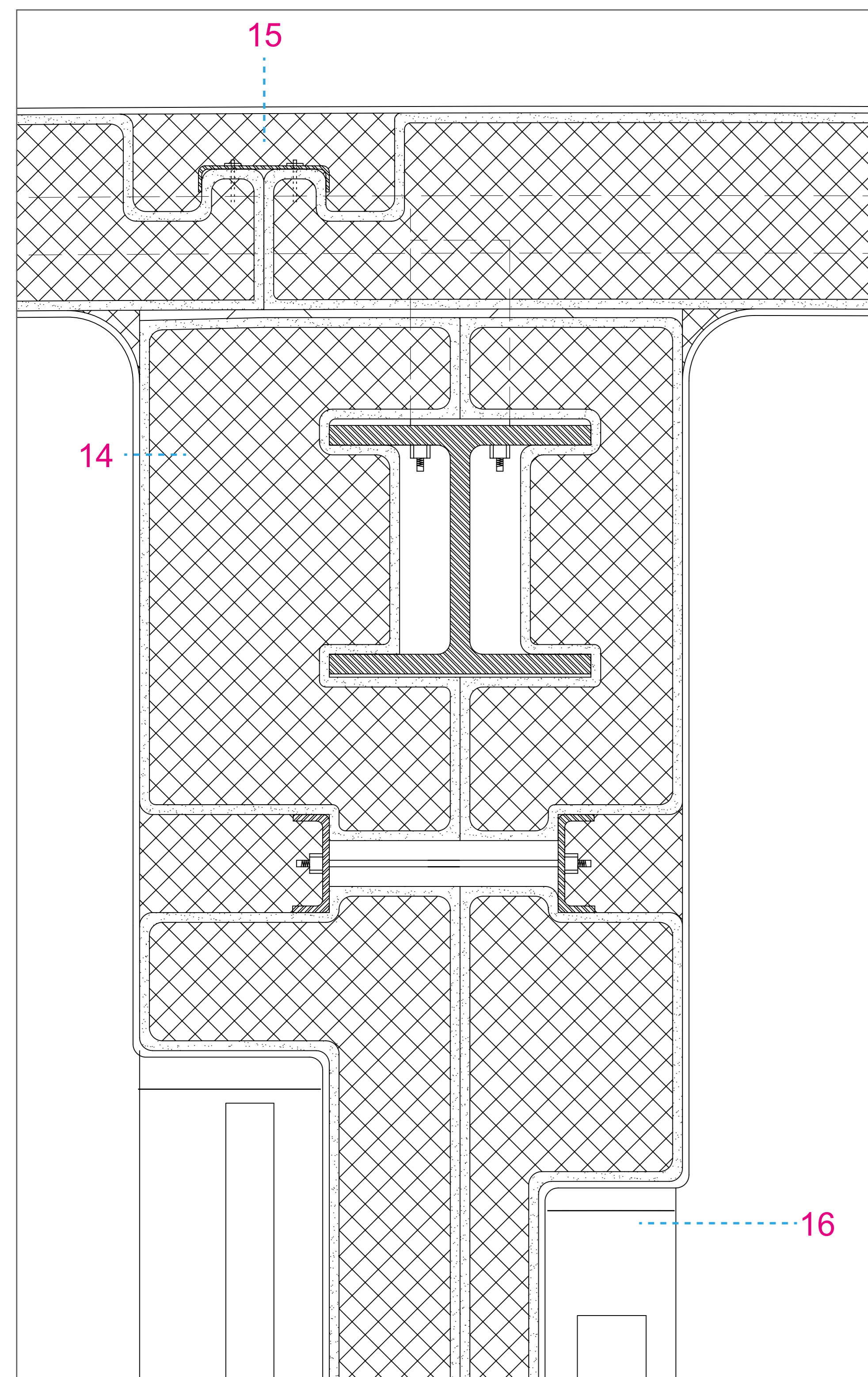


Elevation E

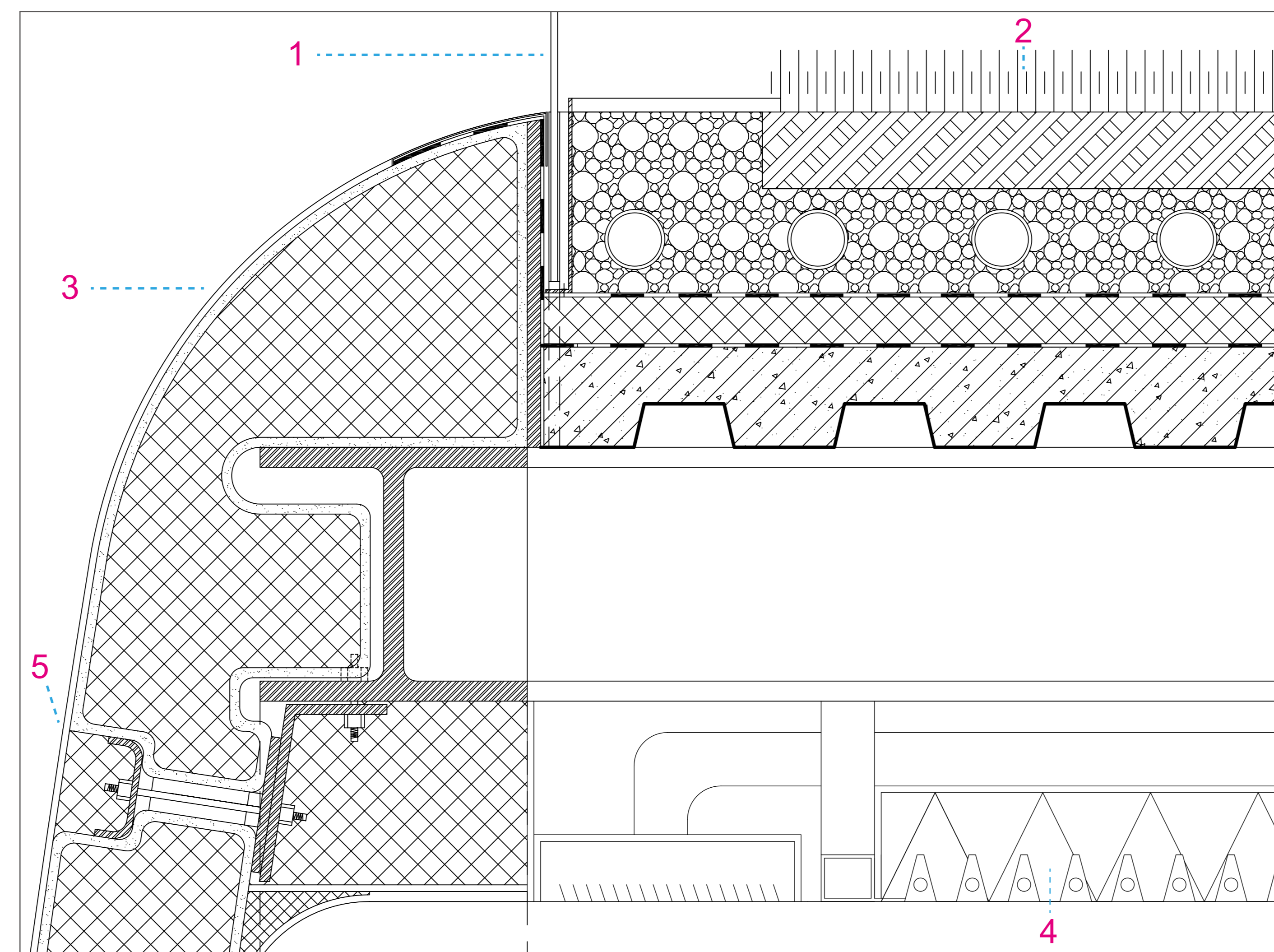




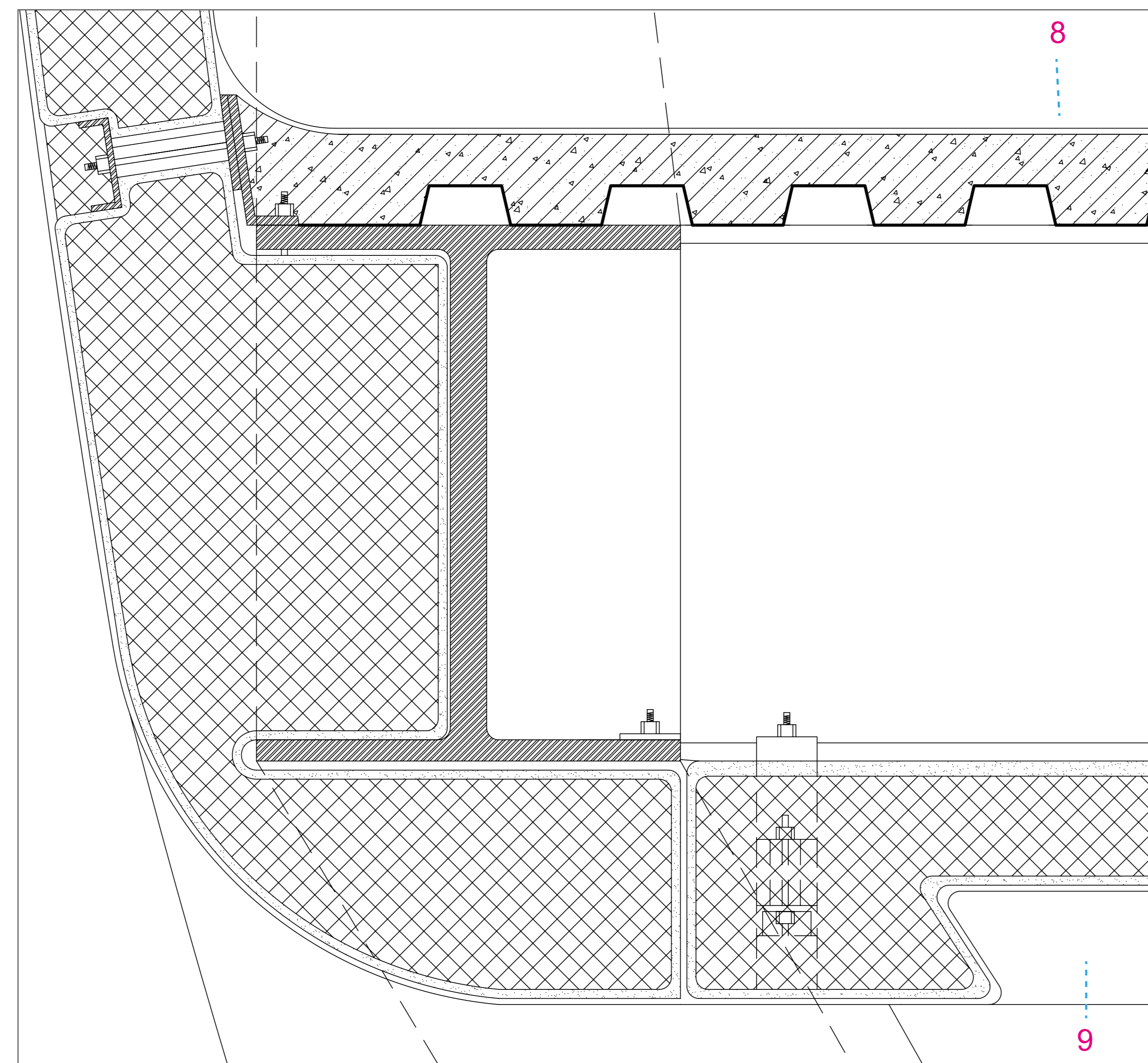
Horizontal Section of Fragment 1: 20



Detail 6 1:5

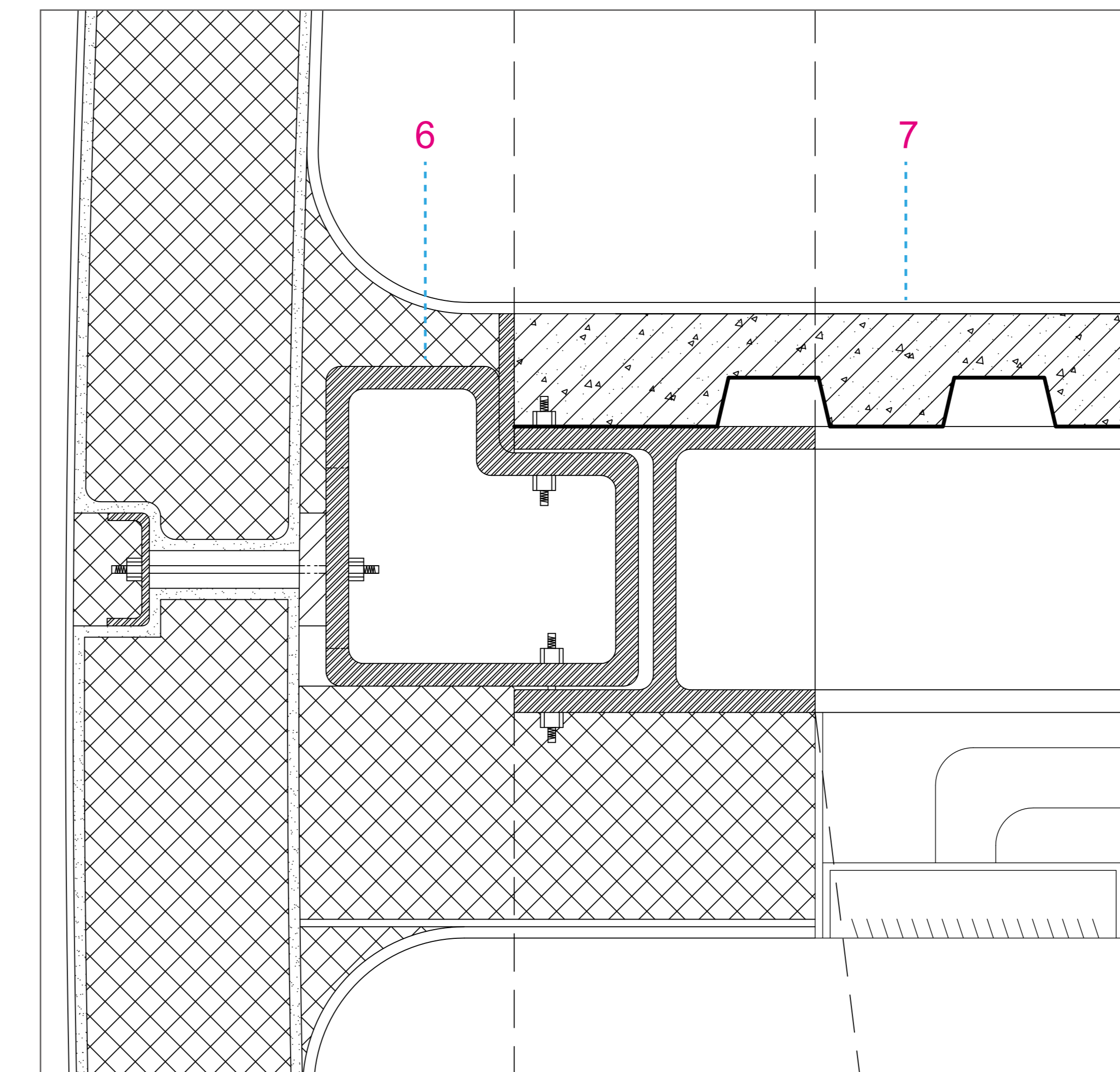


Detail 1 1:5

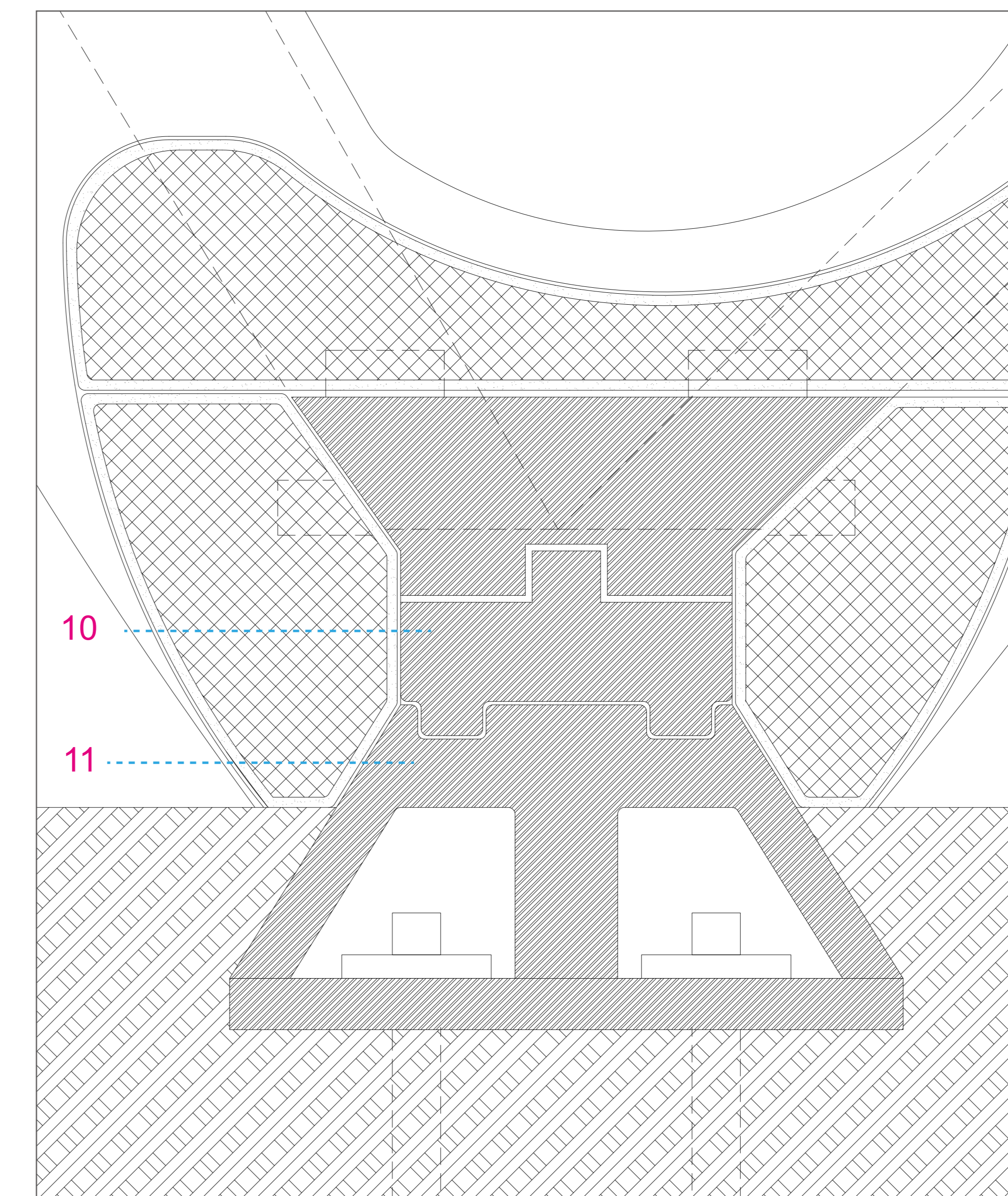


Detail 3 1:5

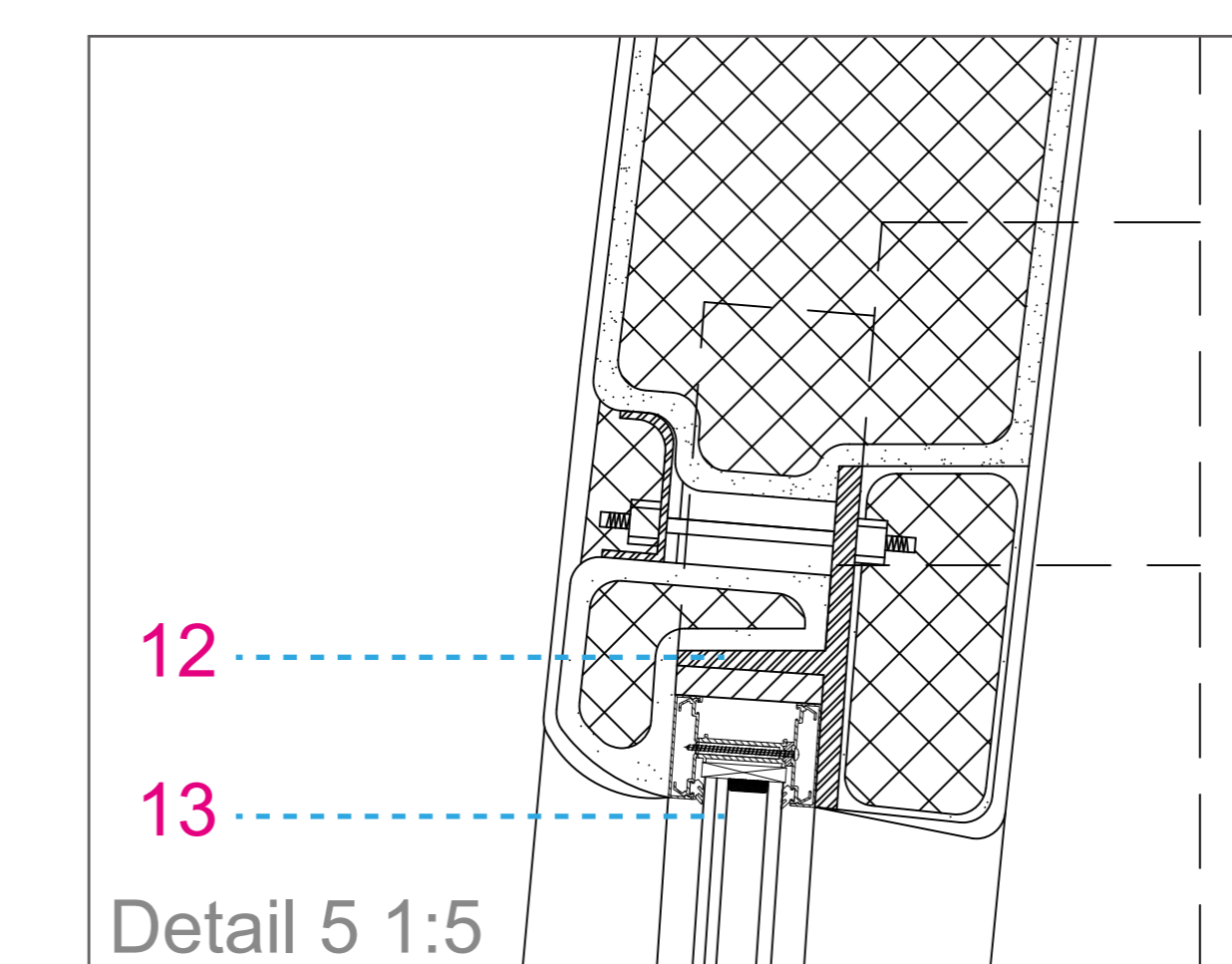
- | | | |
|--|--|--|
| 1 Laminated safety glass | 5 Filling thermal insulation | 12 Pre fabricated steel element (connected to structure) |
| 2 Light vegetation | 6 Pre-fabricated steel component | 13 Laminated acoustical glass with low-e coating |
| Soil | 7 Coating with mesh | 14 Finish coating |
| Gravel combined with drain pipe | 8 Carbon composite coating | CNC- cut EPS with cement coating |
| Thermal insulation | 9 Noise reflection pocket | Steel Structure |
| Waterproofing layer | 10 Stainless-steel hinge bolt in sliding bearing | 15 Pre-fabricated element for connecting eps componets |
| Floor with profiled steel sheet I beam | 11 cast-steel element fixed in foundation | 16 CNC-cut pockets for showing products and storage |



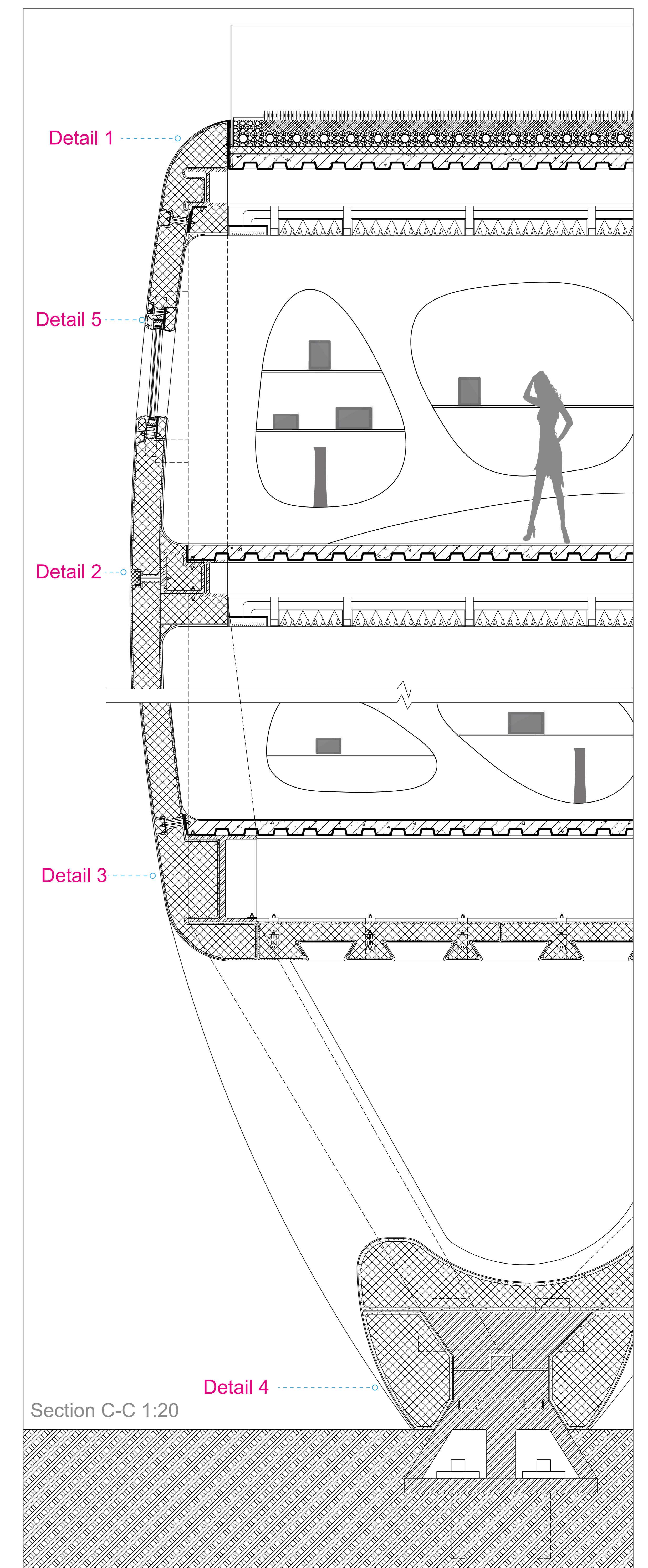
Detail 2 1:5



Detail 4 1: 10



Detail 5 1:5



Section C-C 1:20