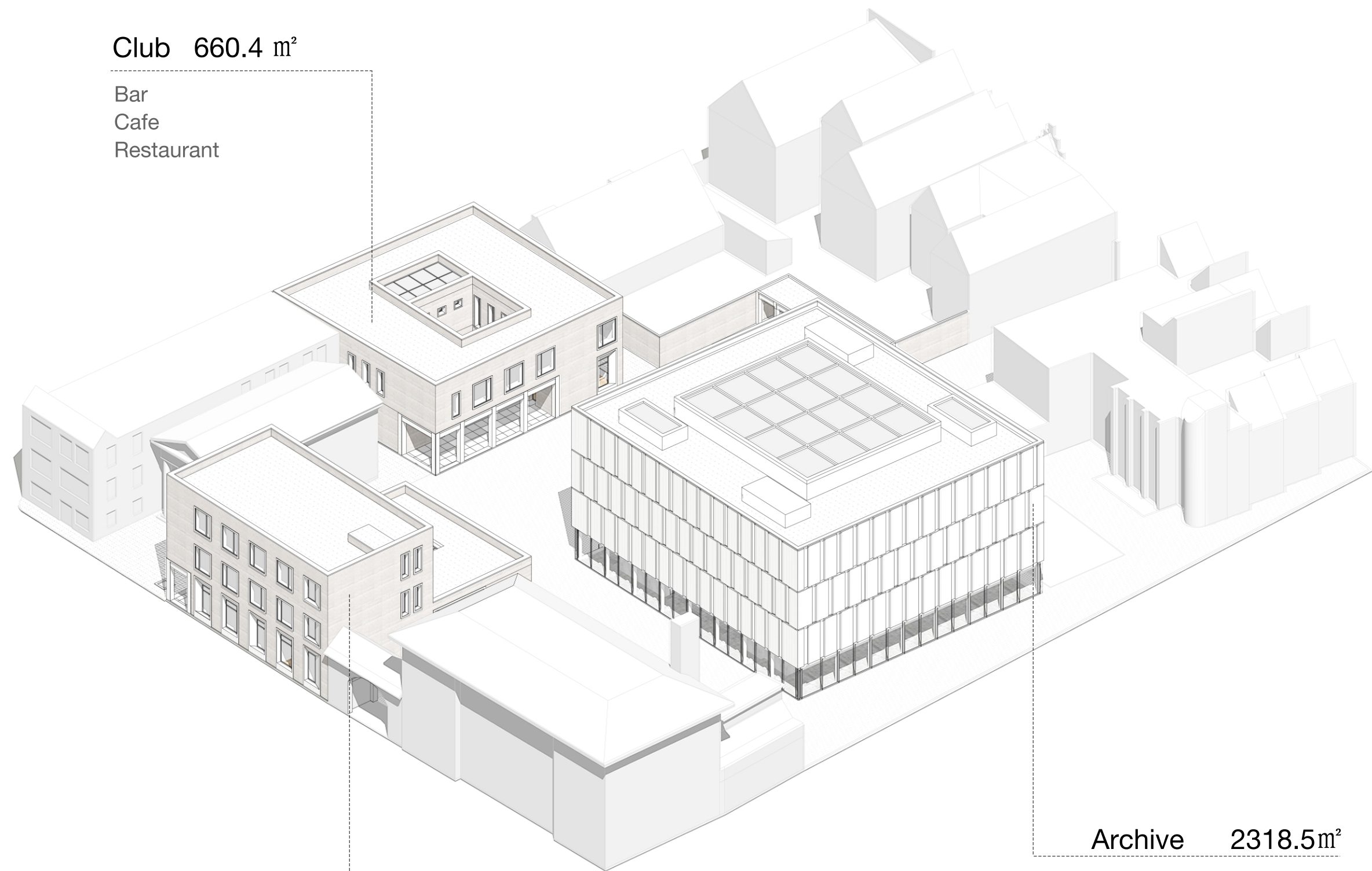




Figure Plan 1:1000

This figure plan show the relationship between the new building a and the existing city context. From this plan we could clearly see how the new building cluster reform the existing void in the city center.





**Club 660.4 m<sup>2</sup>**

Bar  
Cafe  
Restaurant

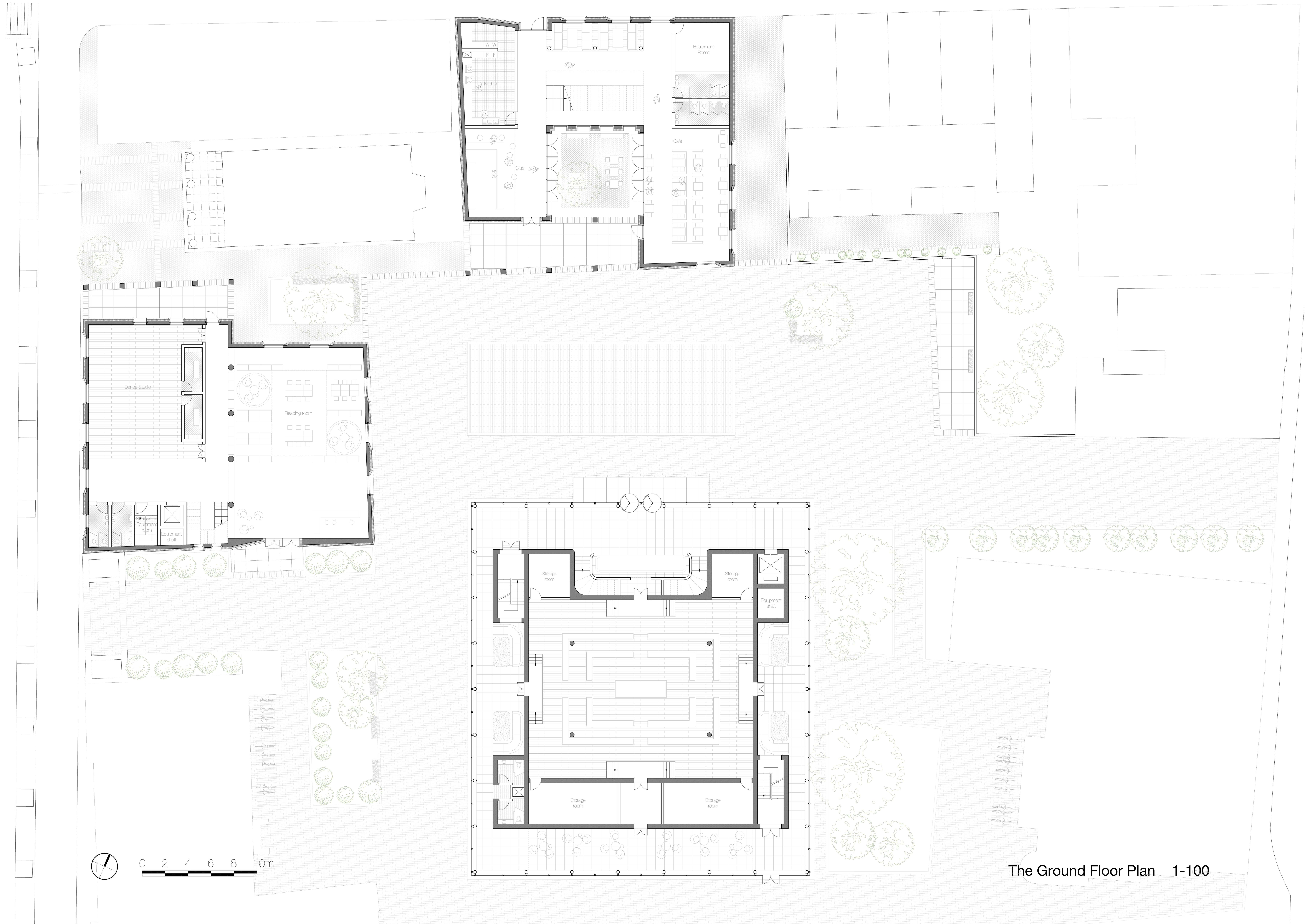
**Study center 990.2 m<sup>2</sup>**

Reading room  
Studio (music/art/dance/performance, etc)

**Archive 2318.5m<sup>2</sup>**

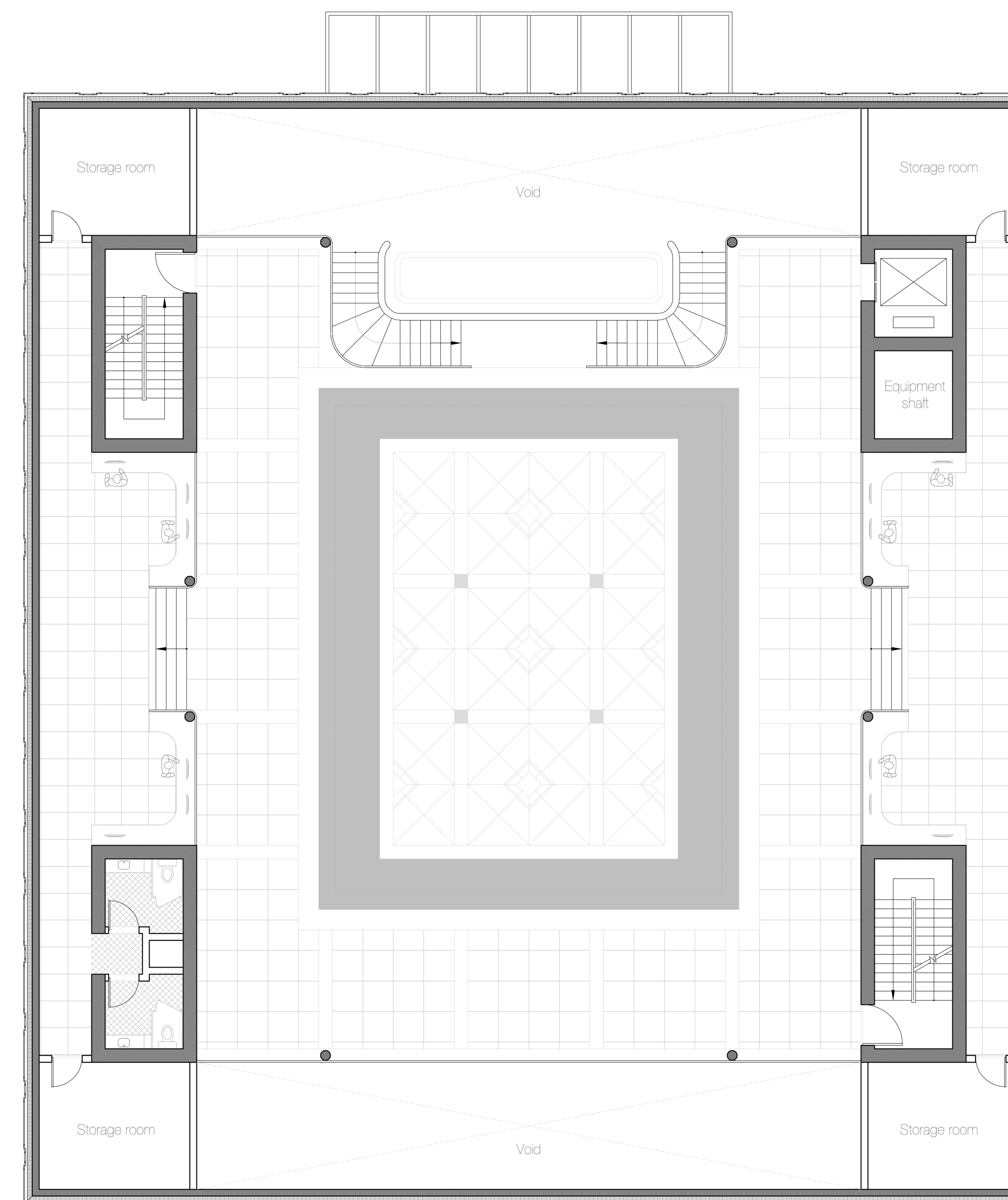
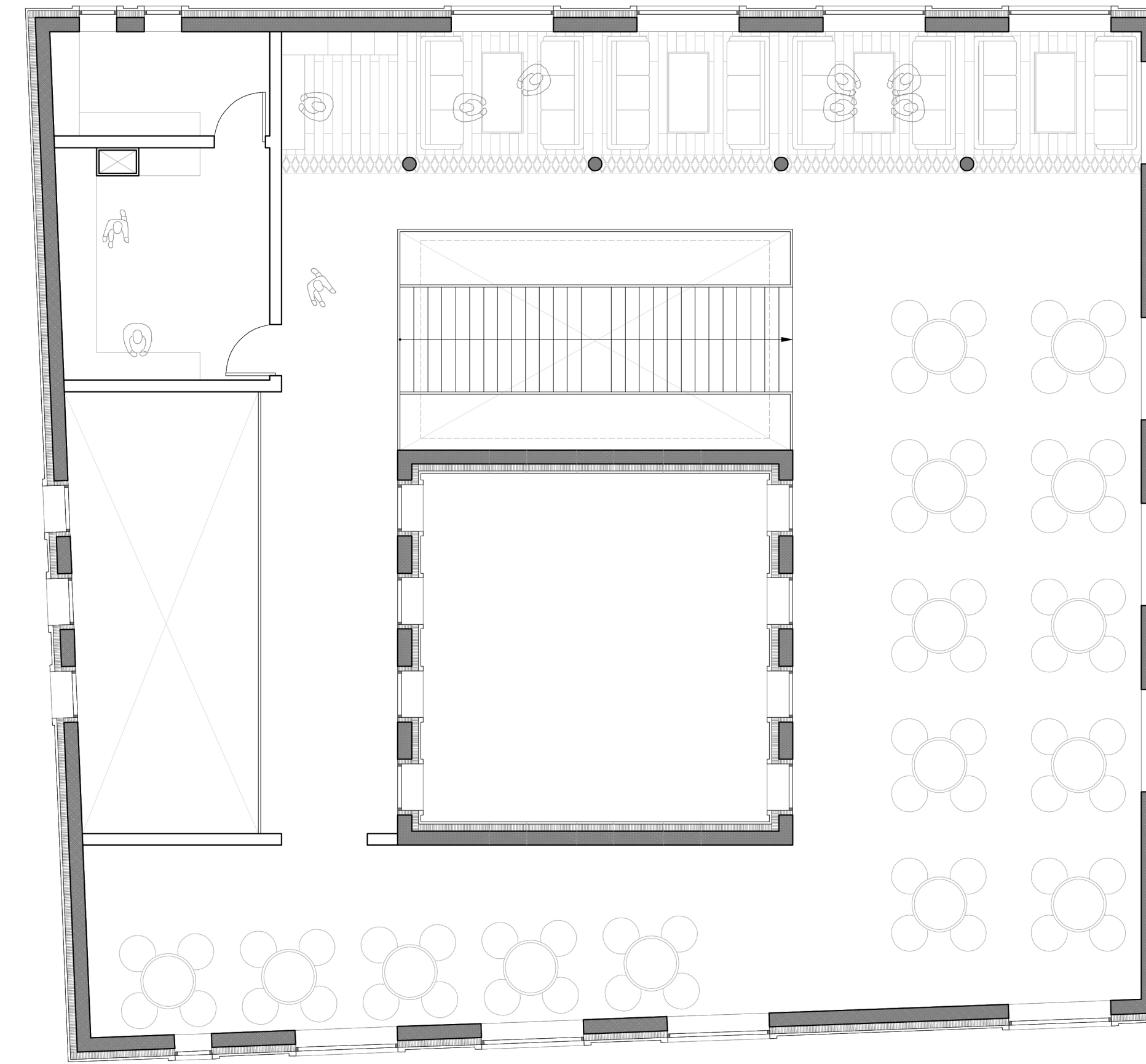
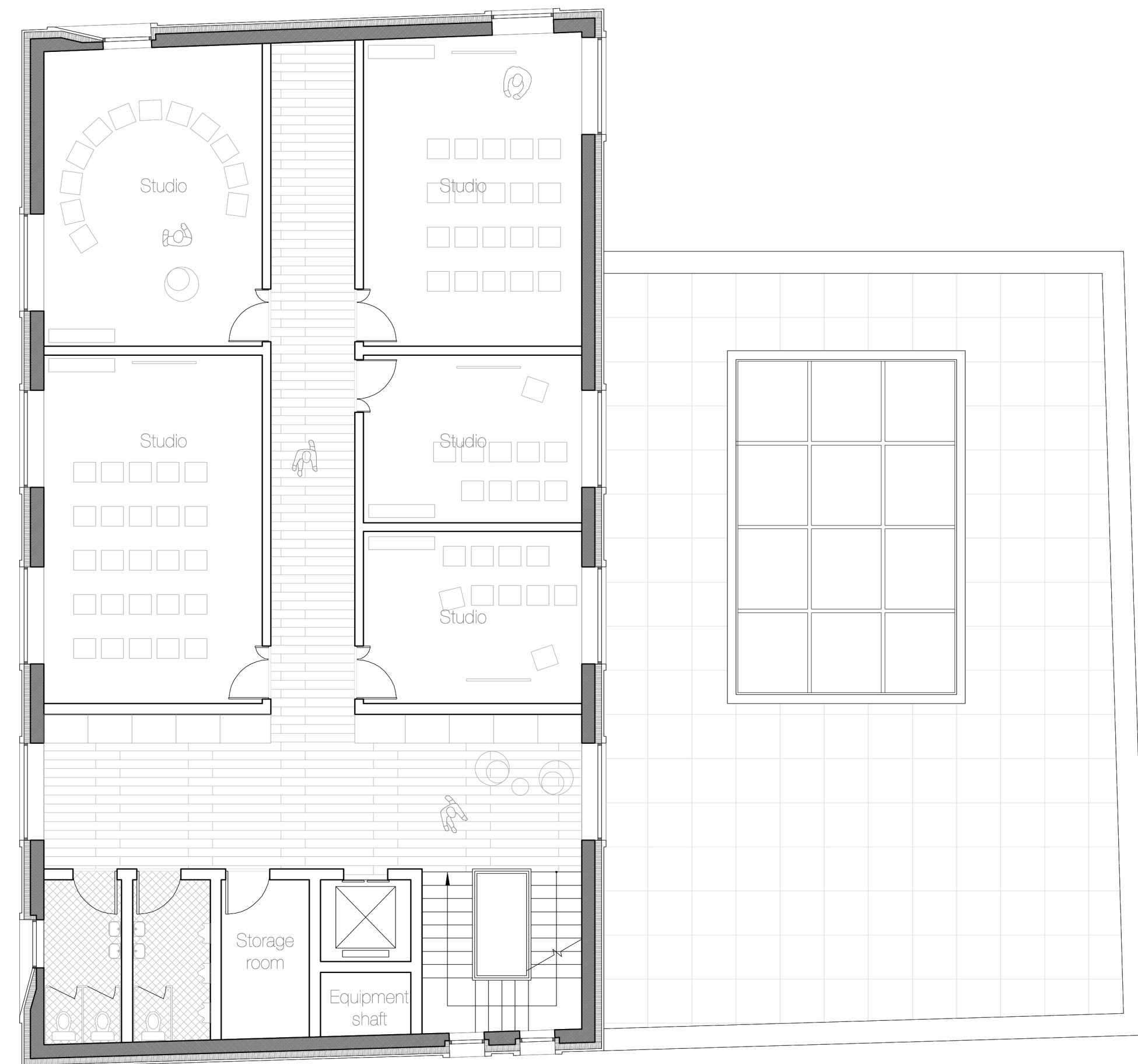
Atrium (multifunction hall)  
Close-shelves storage room  
Open-shelves storage room  
Study space



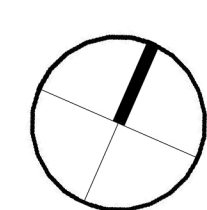
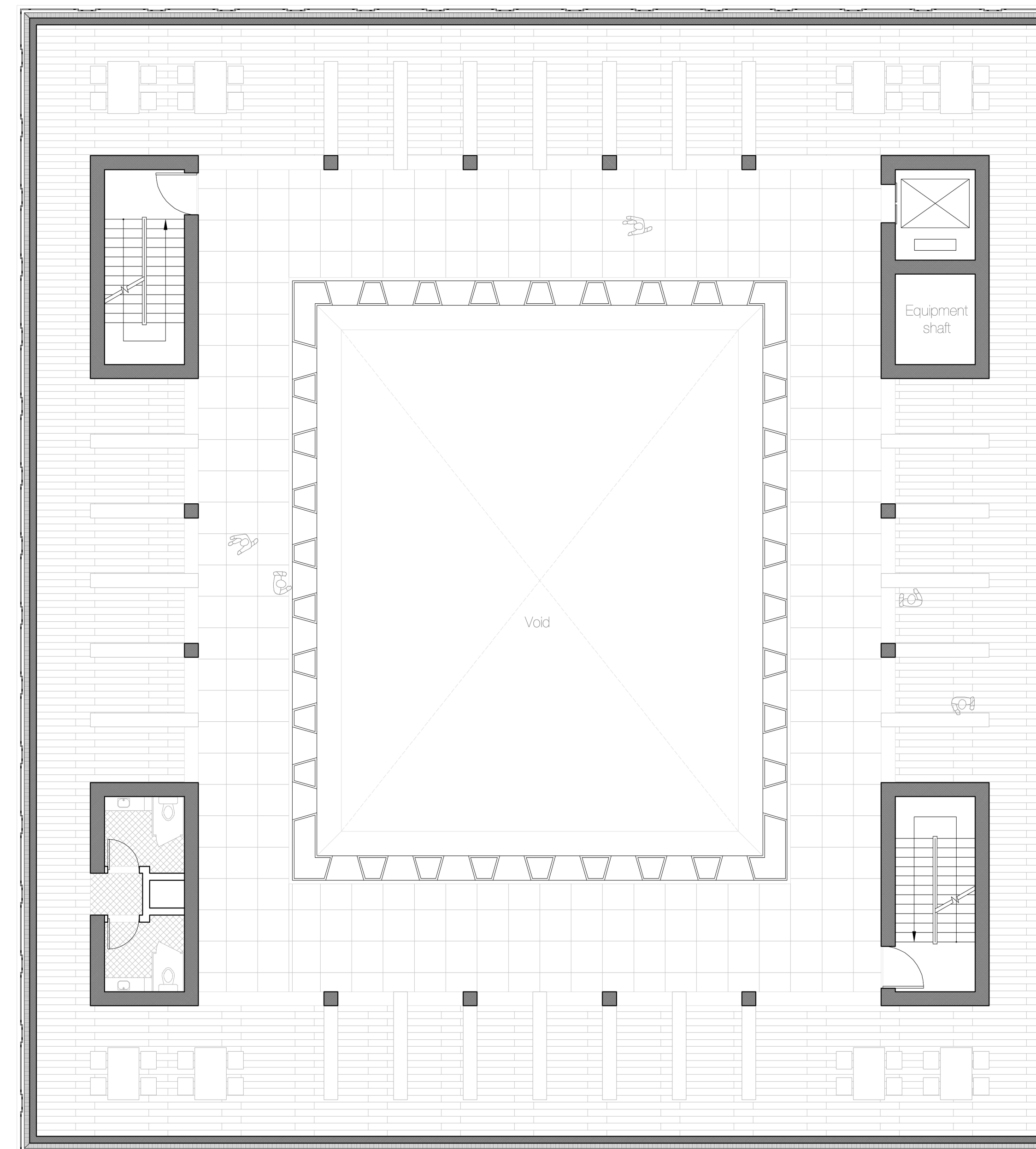
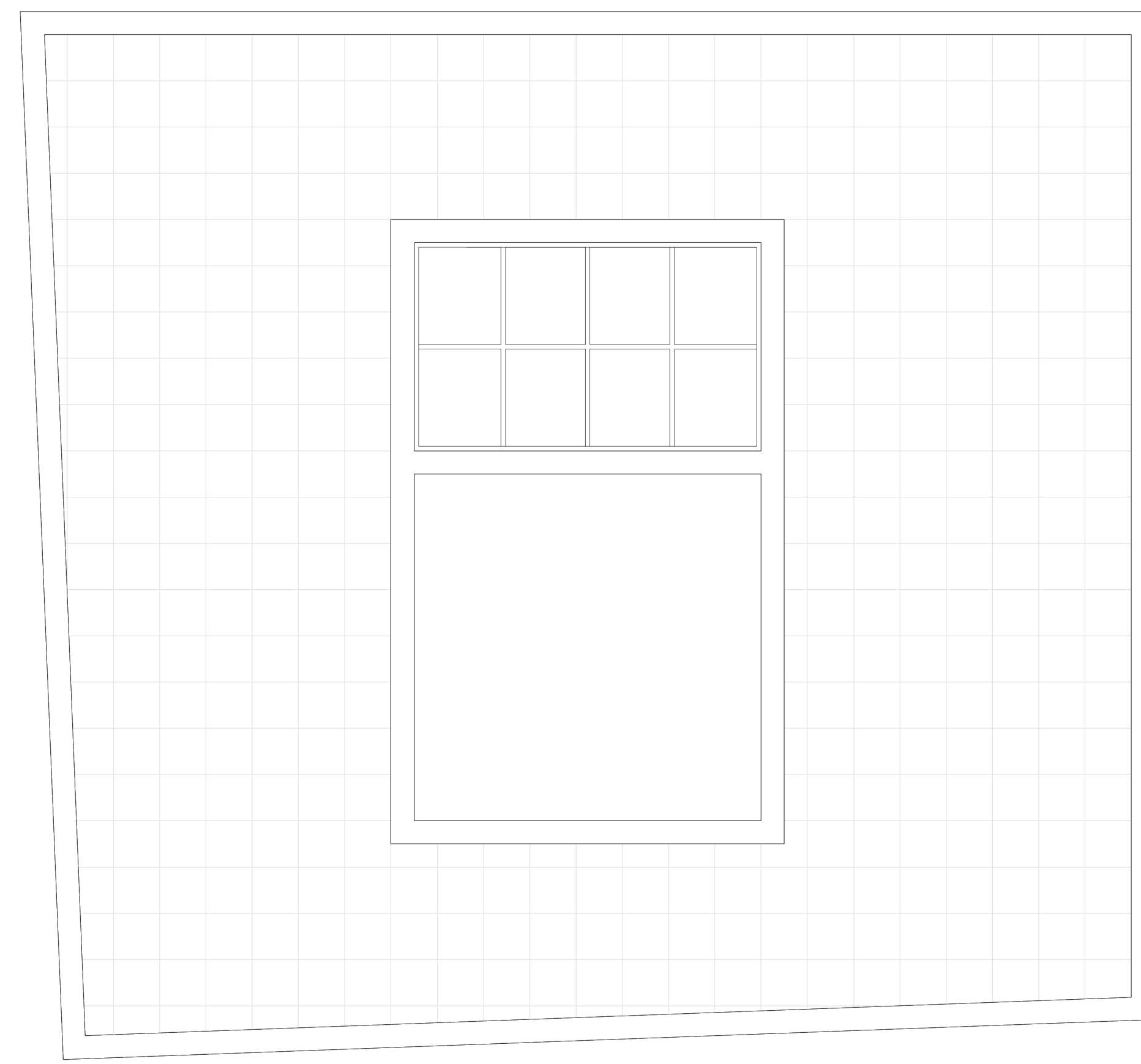
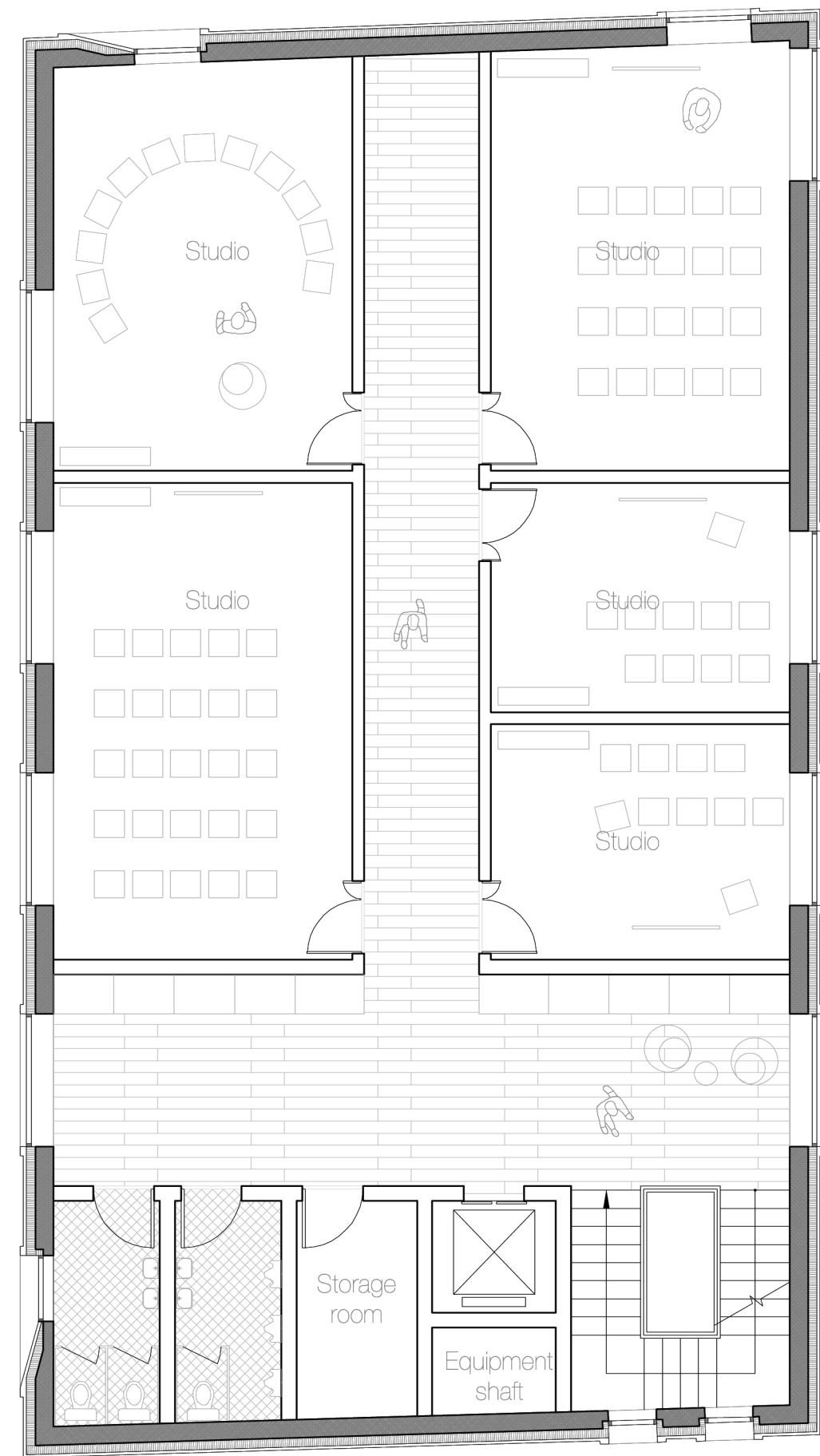


The Ground Floor Plan 1-100



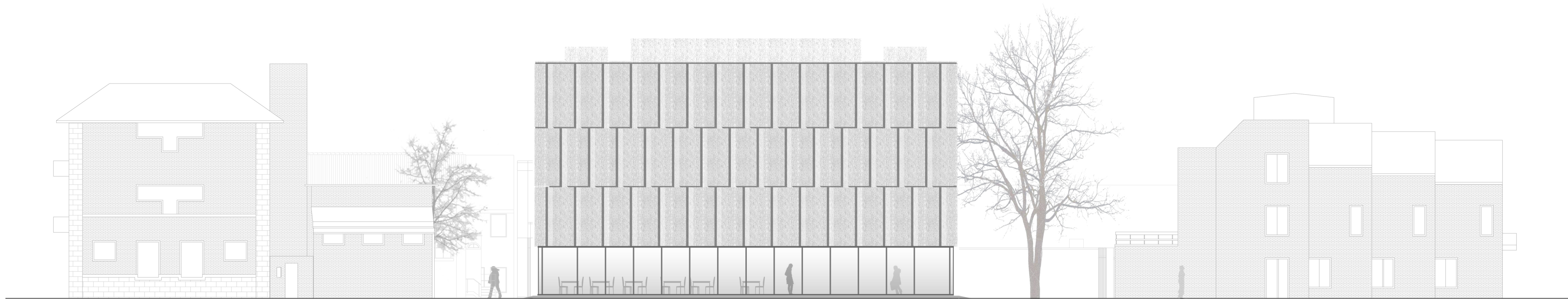






0 2 4 6 8 10m



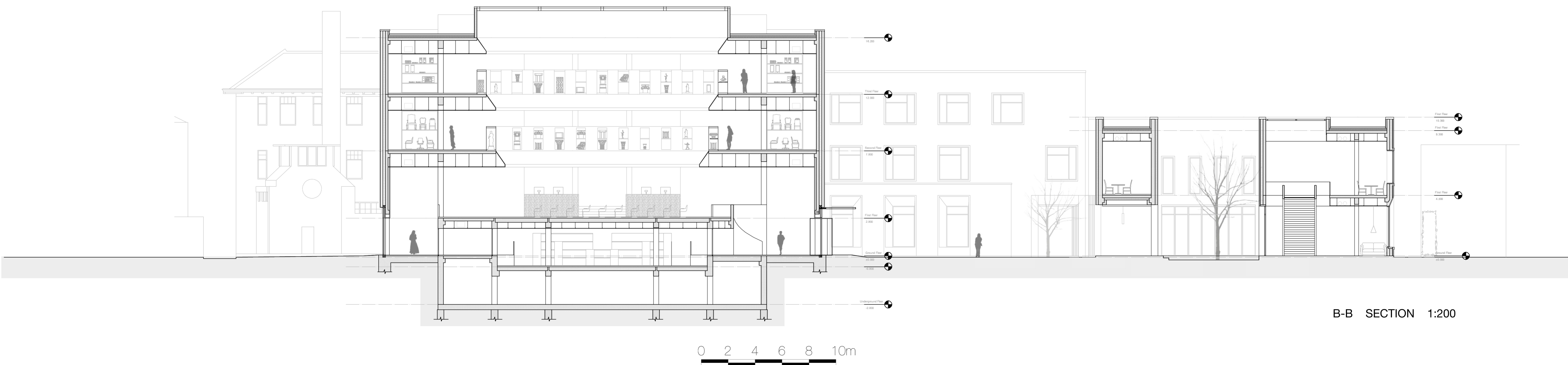
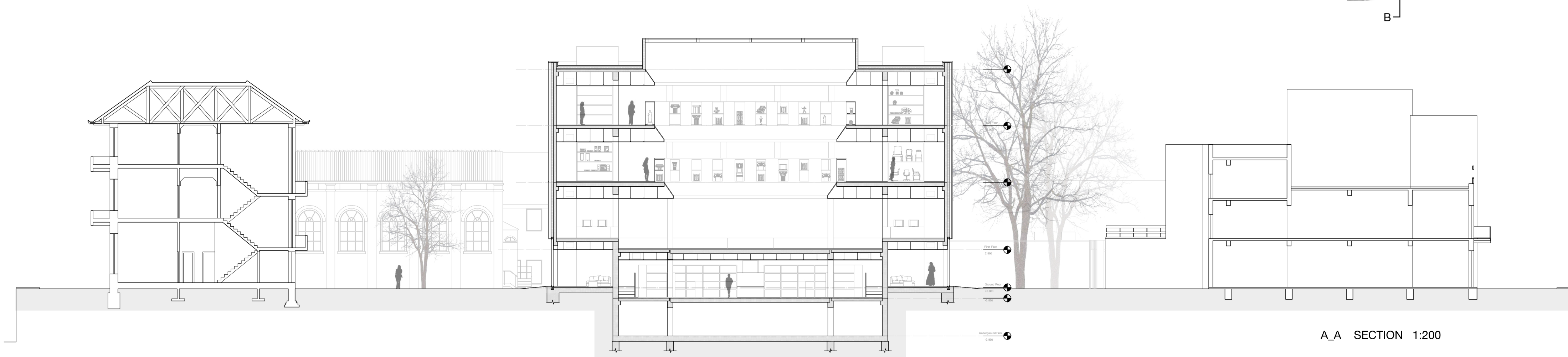
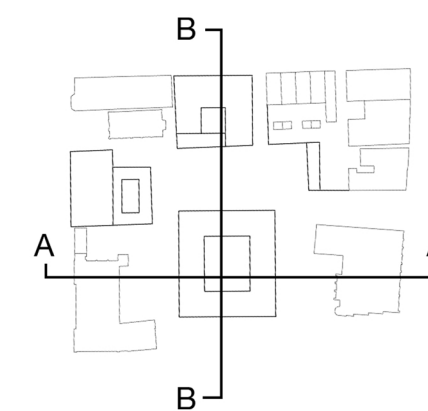


SOUTH ELEVATION 1:200



WEST ELEVATION 1:200

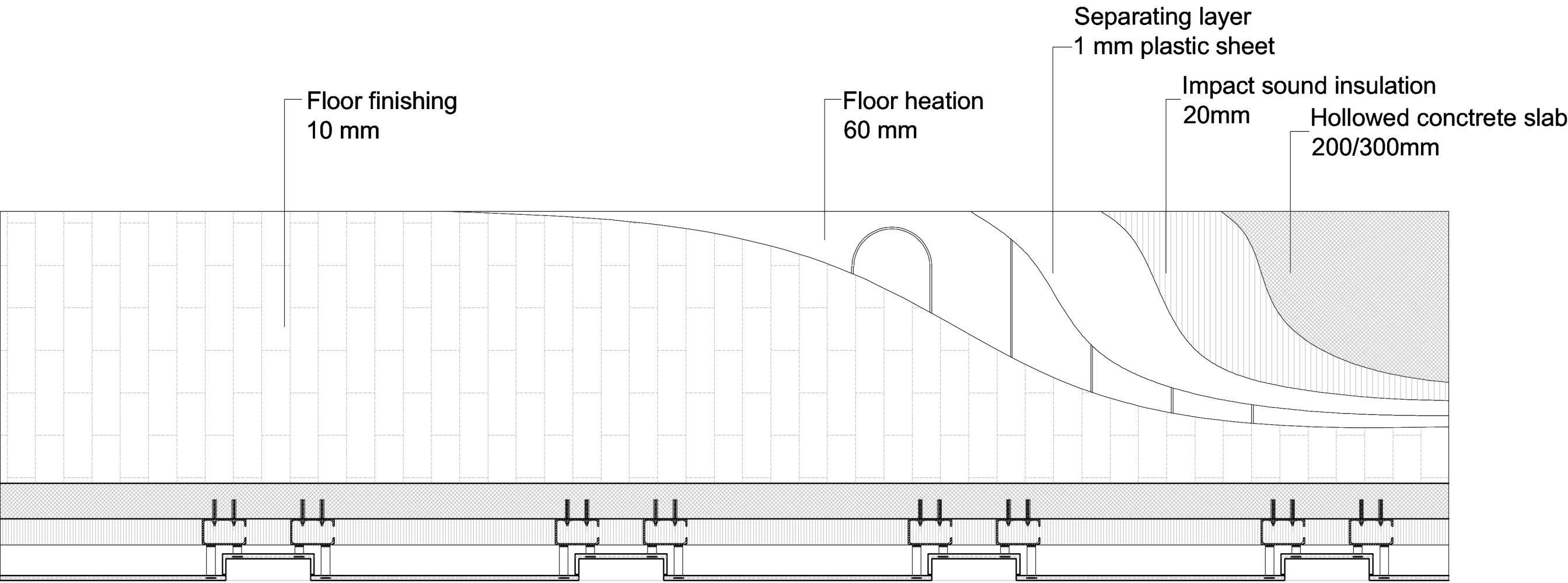
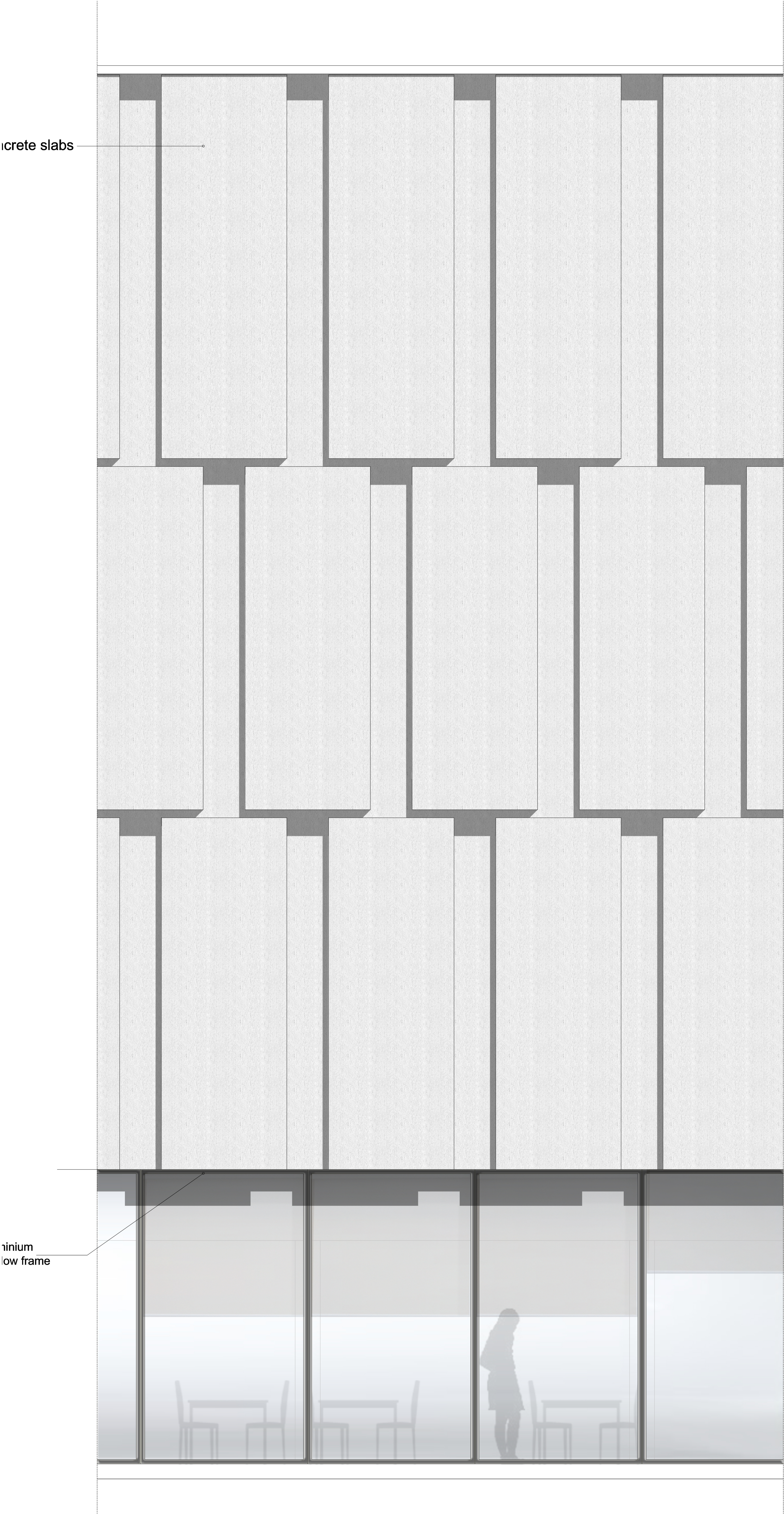




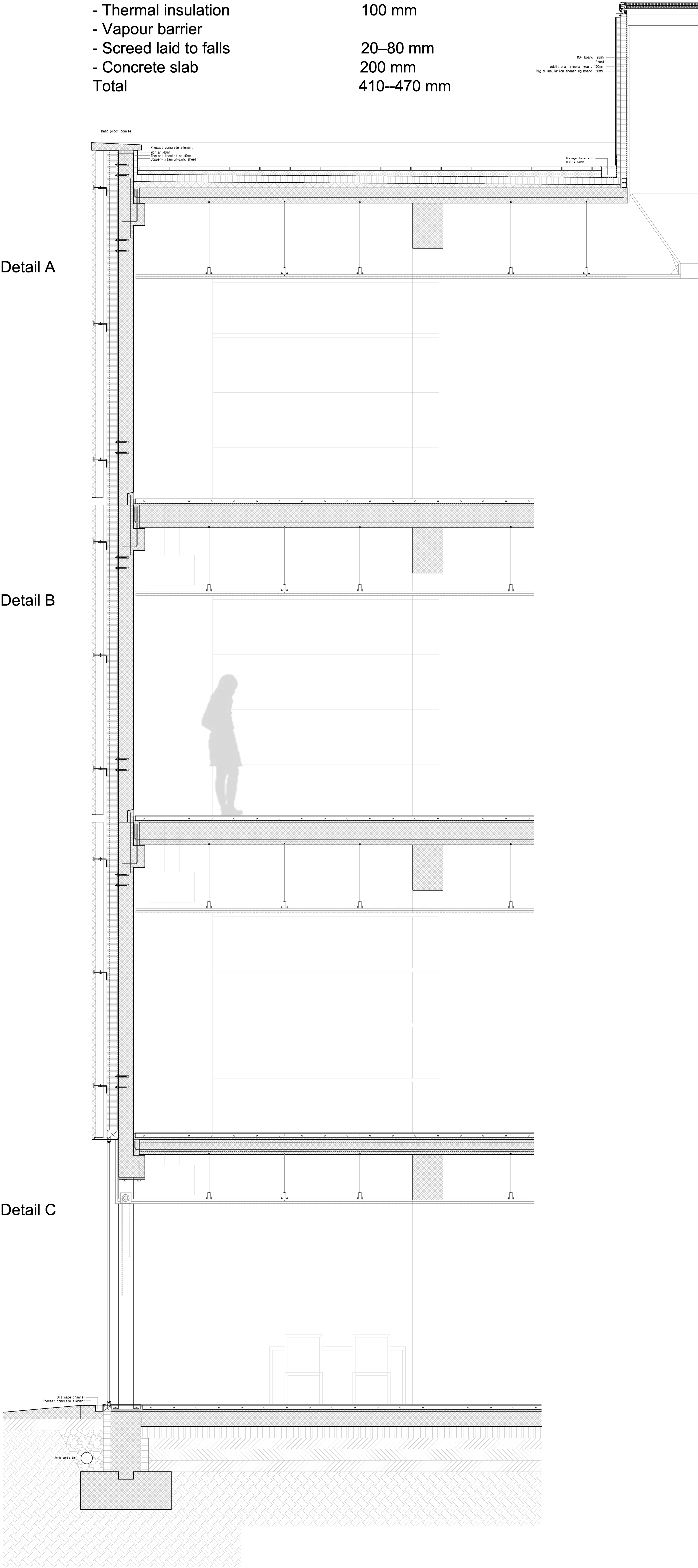
0 2 4 6 8 10m



Facade fragment 1: 20



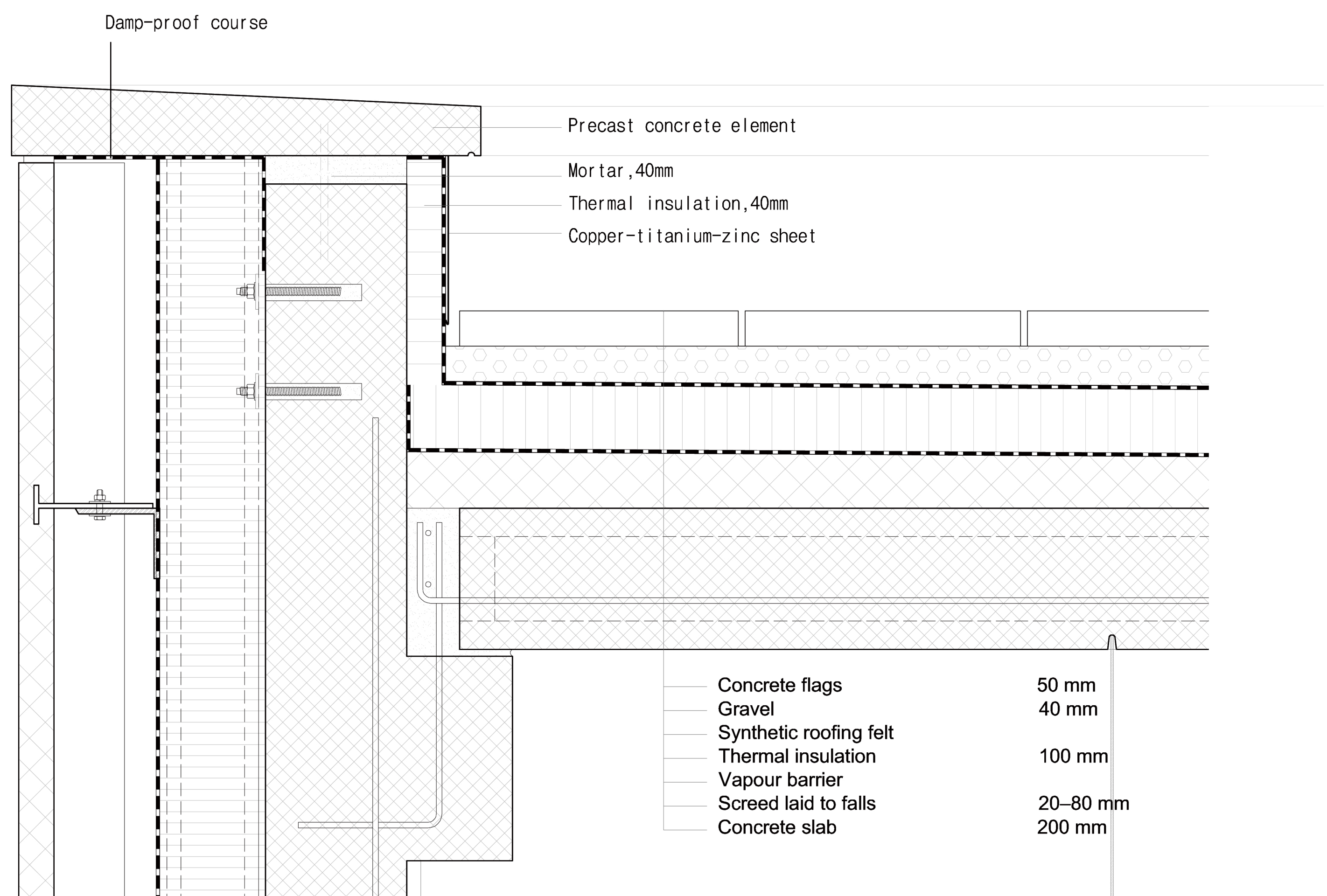
Roof construction	
- Concrete flags	50 mm
- Gravel	40 mm
- Synthetic roofing felt	
- Thermal insulation	100 mm
- Vapour barrier	
- Screed laid to falls	20–80 mm
- Concrete slab	200 mm
Total	410–470 mm



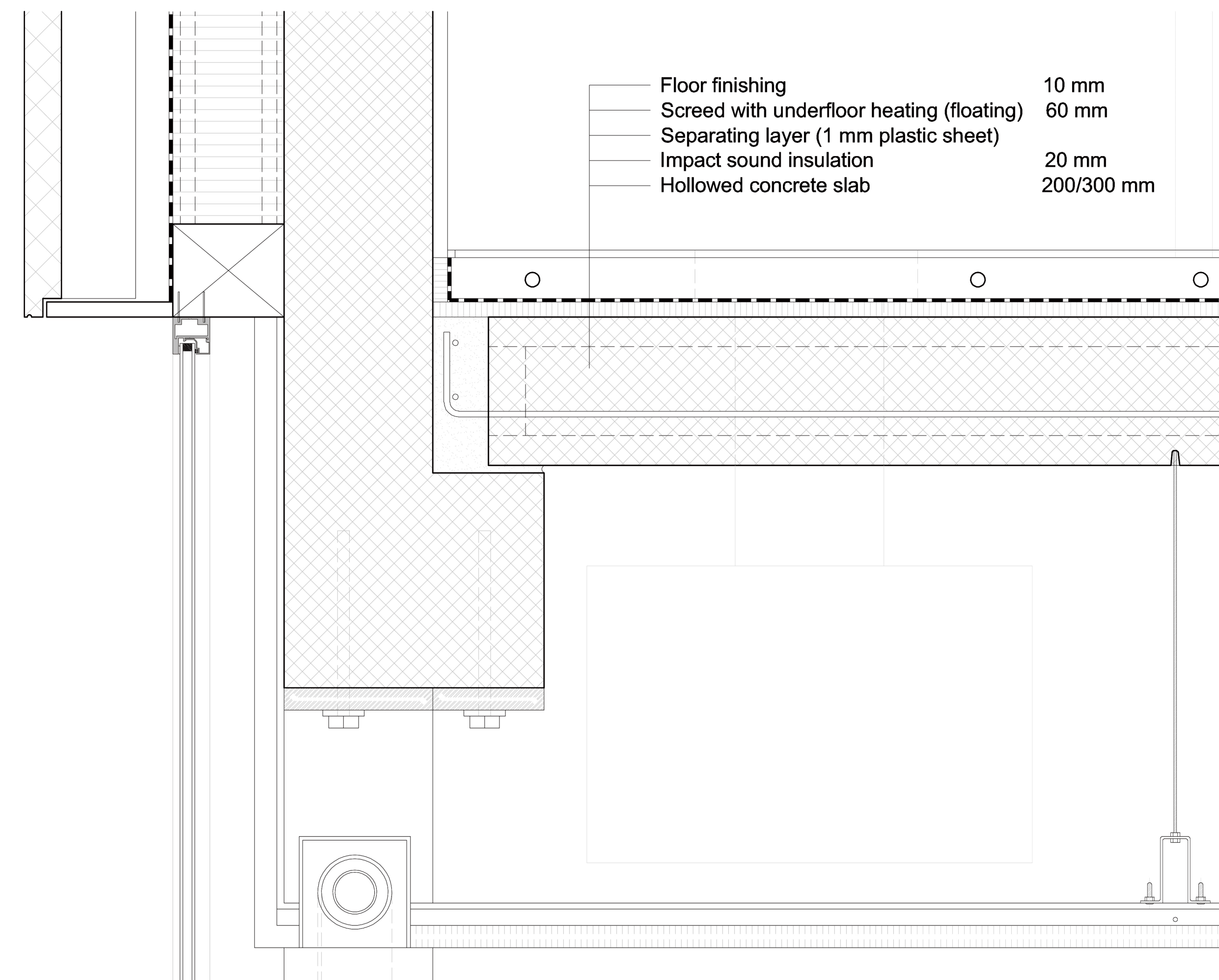
Wall construction	
- Concrete slabs	28 mm
- Ventilated cavity	100-132 mm
- Thermal insulation	200 mm
- Concrete internally	200 mm
- Interior wall finishing	20 mm
Total	580 mm

Floor construction	
- Floor finishing 10 mm	
- Screed with underfloor heating (floating)	60 mm
- Separating layer (1 mm plastic sheet)	
- Impact sound insulation	20 mm
- Hollowed concrete slab	200/300 mm
Total	390/490 mm

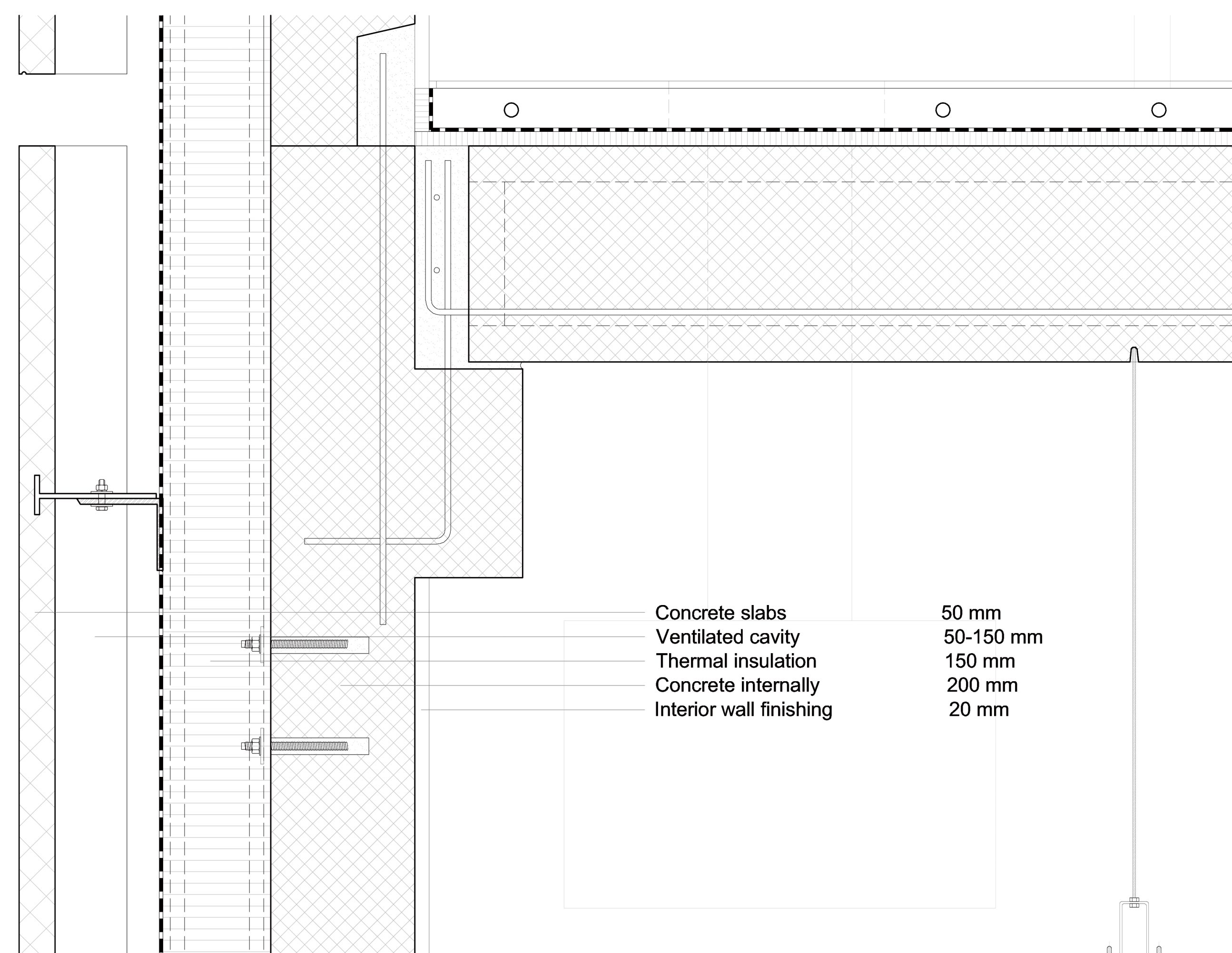
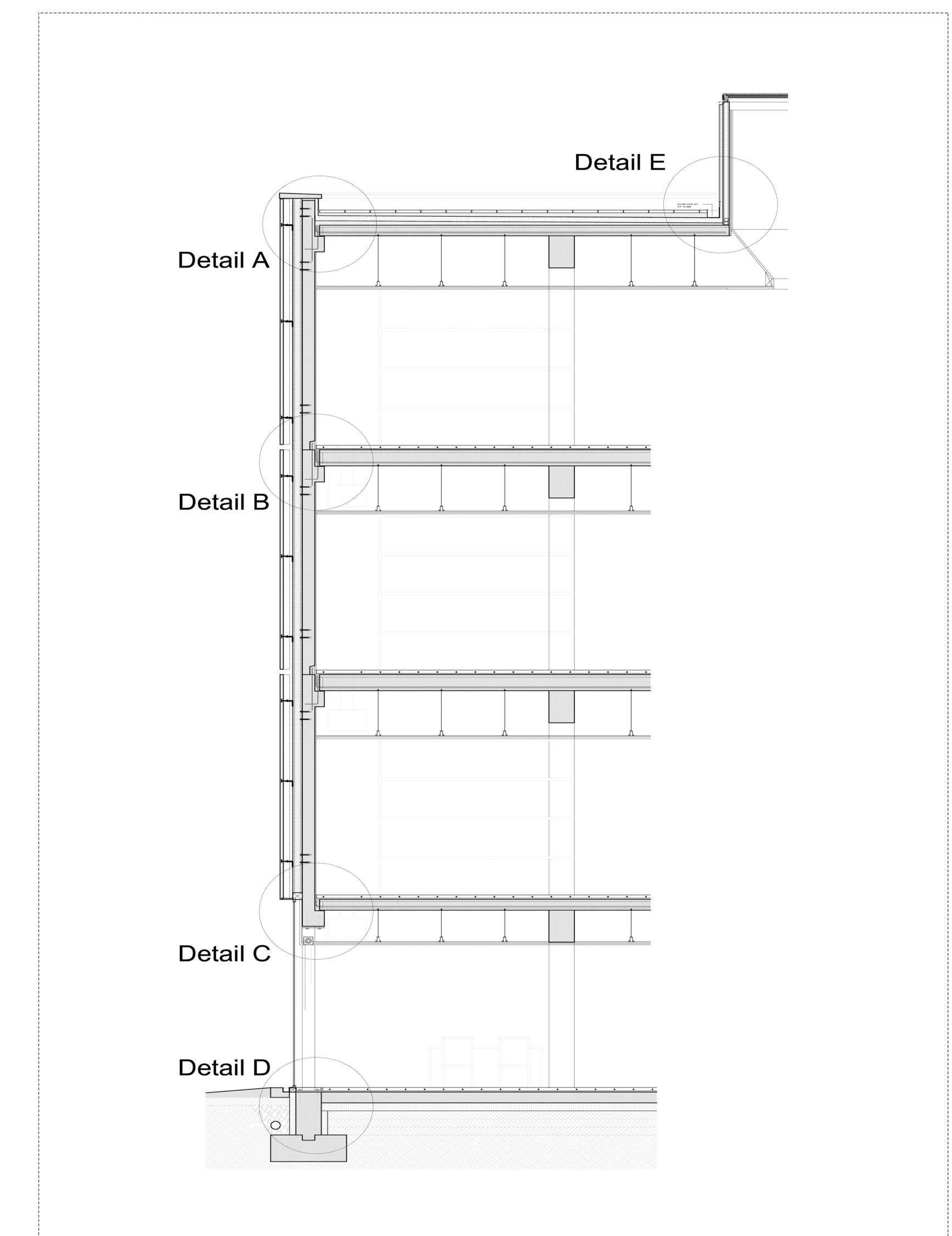




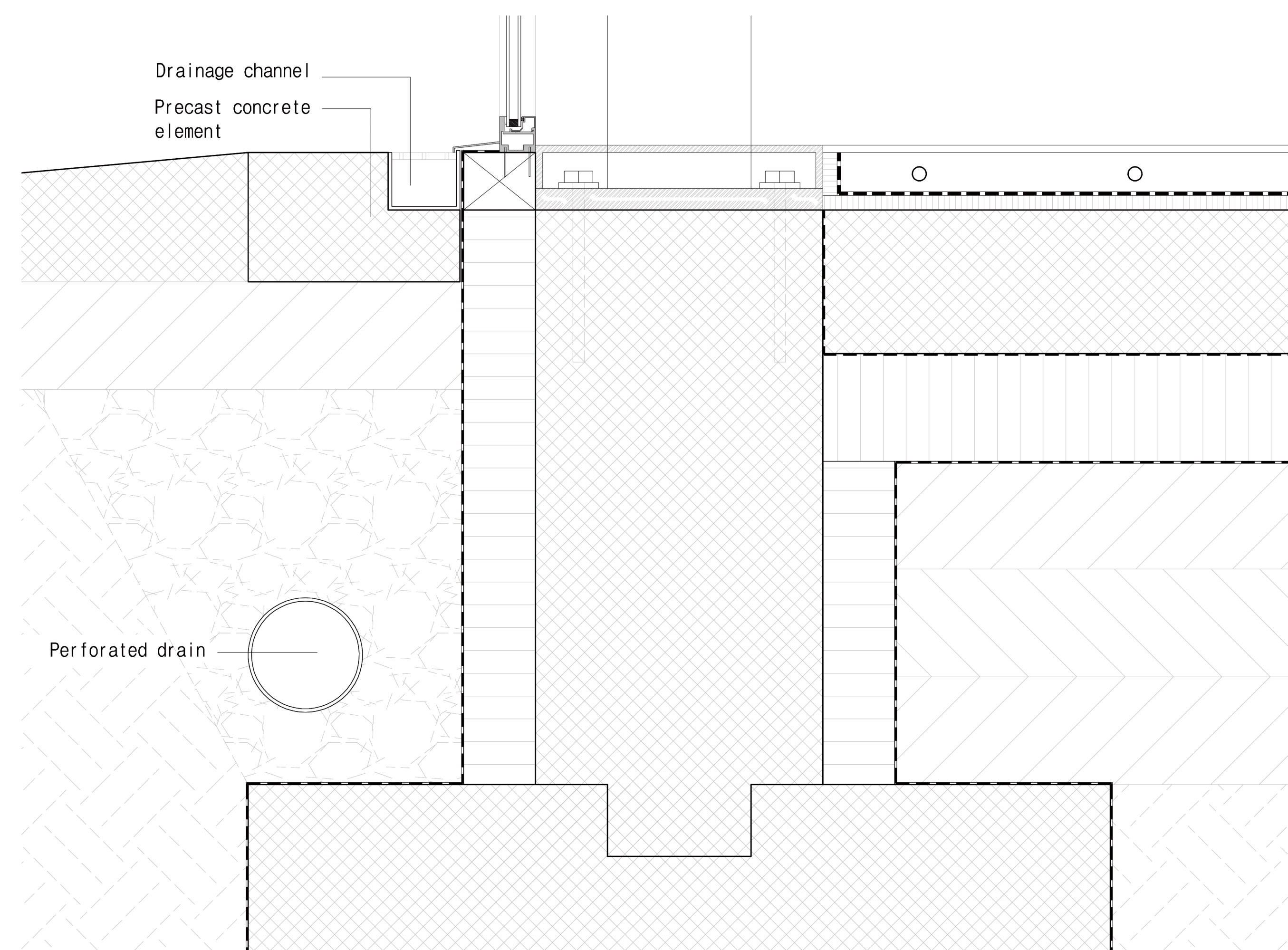
Detail A 1:5



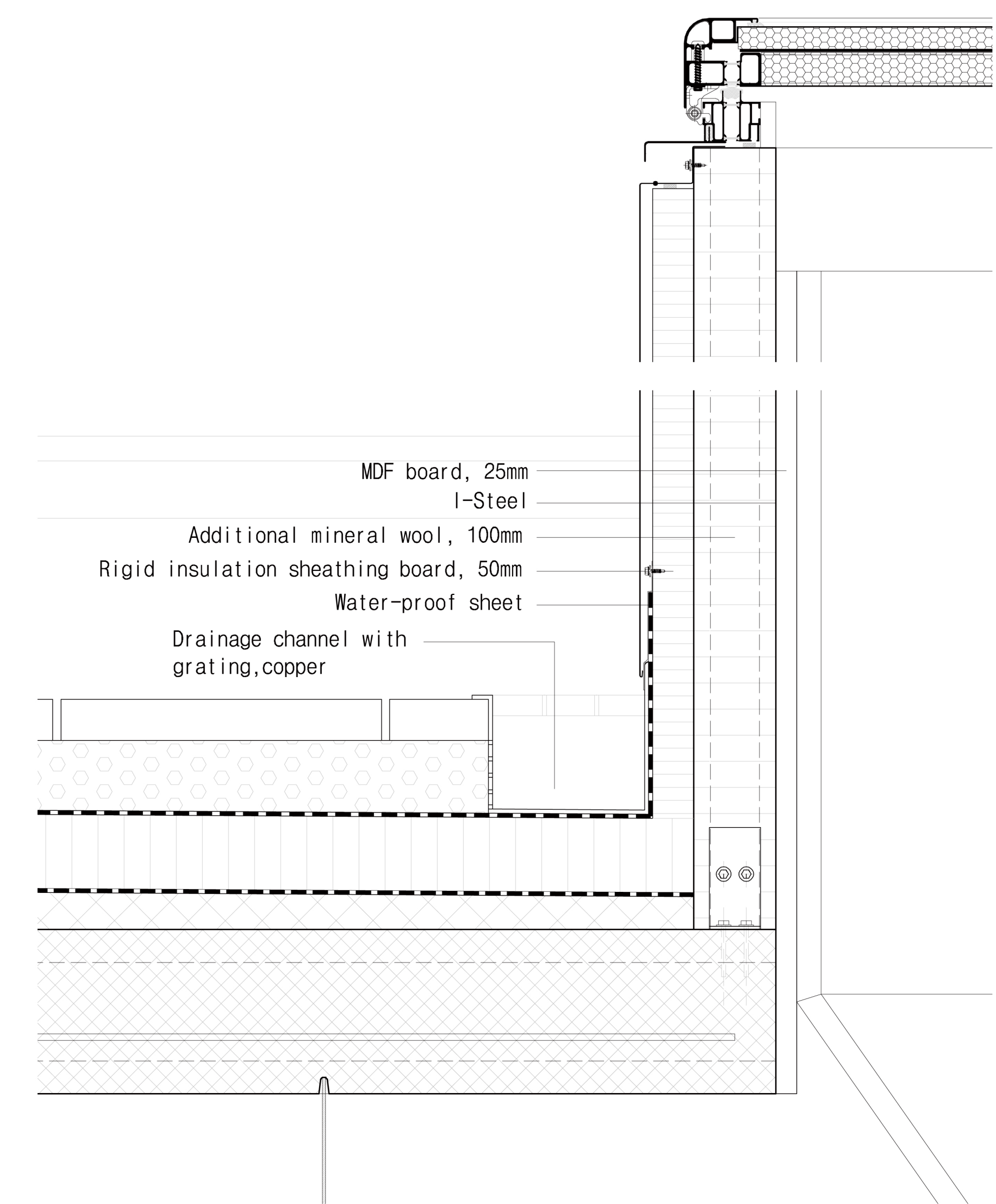
Detail C 1:5



Detail B 1:5



Detail D 1:5



Detail E 1:5