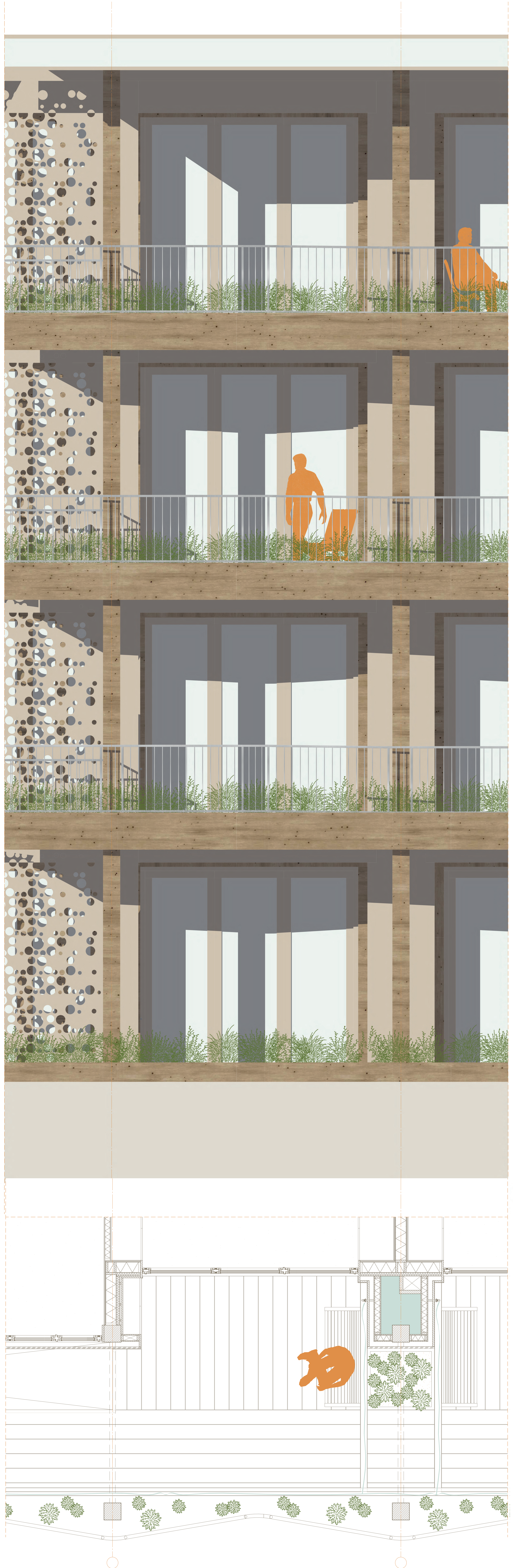
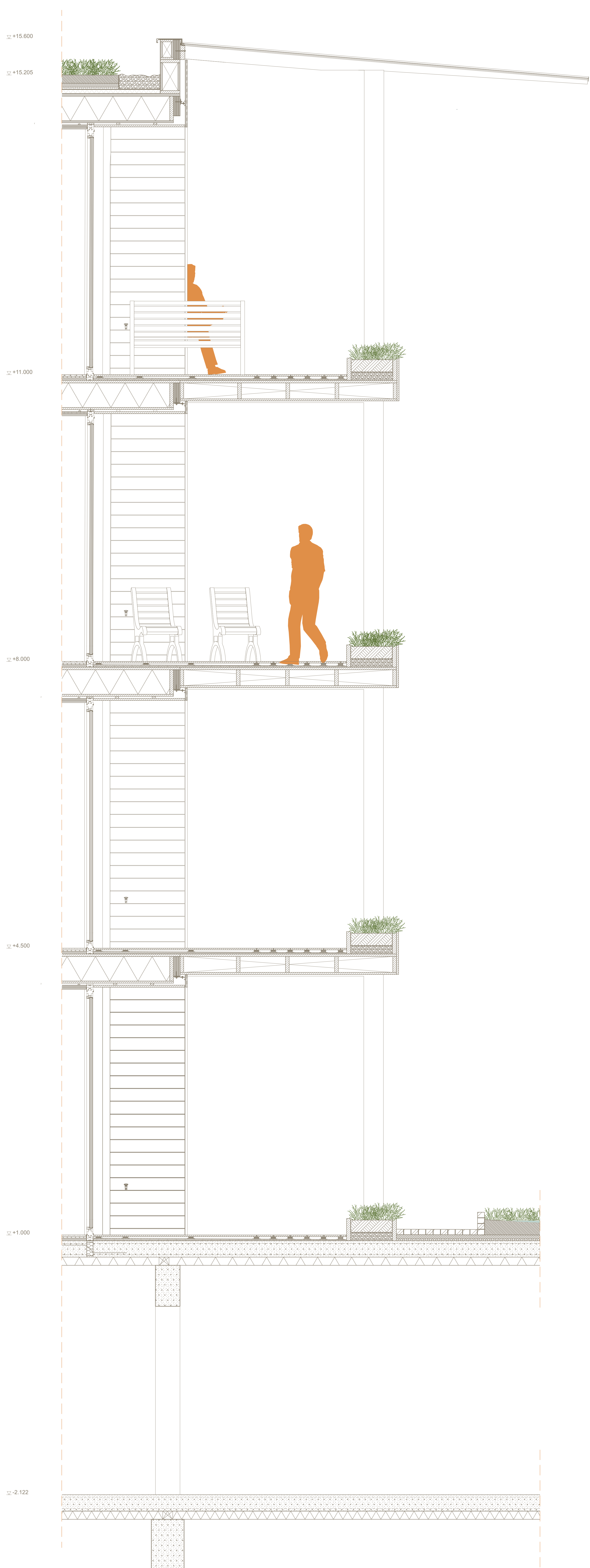


THE NEXT CURRENT

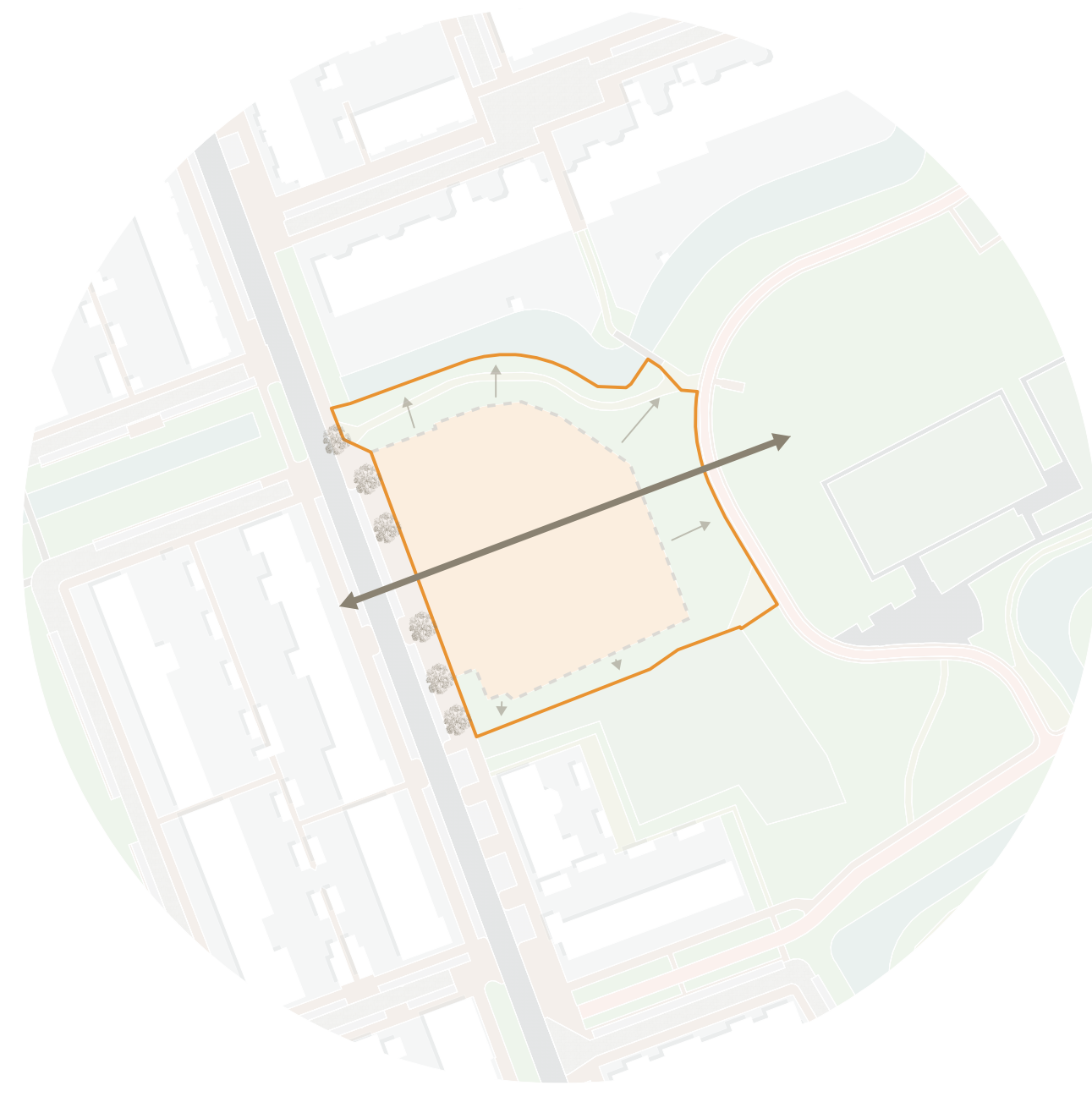


THE NEXT CURRENT

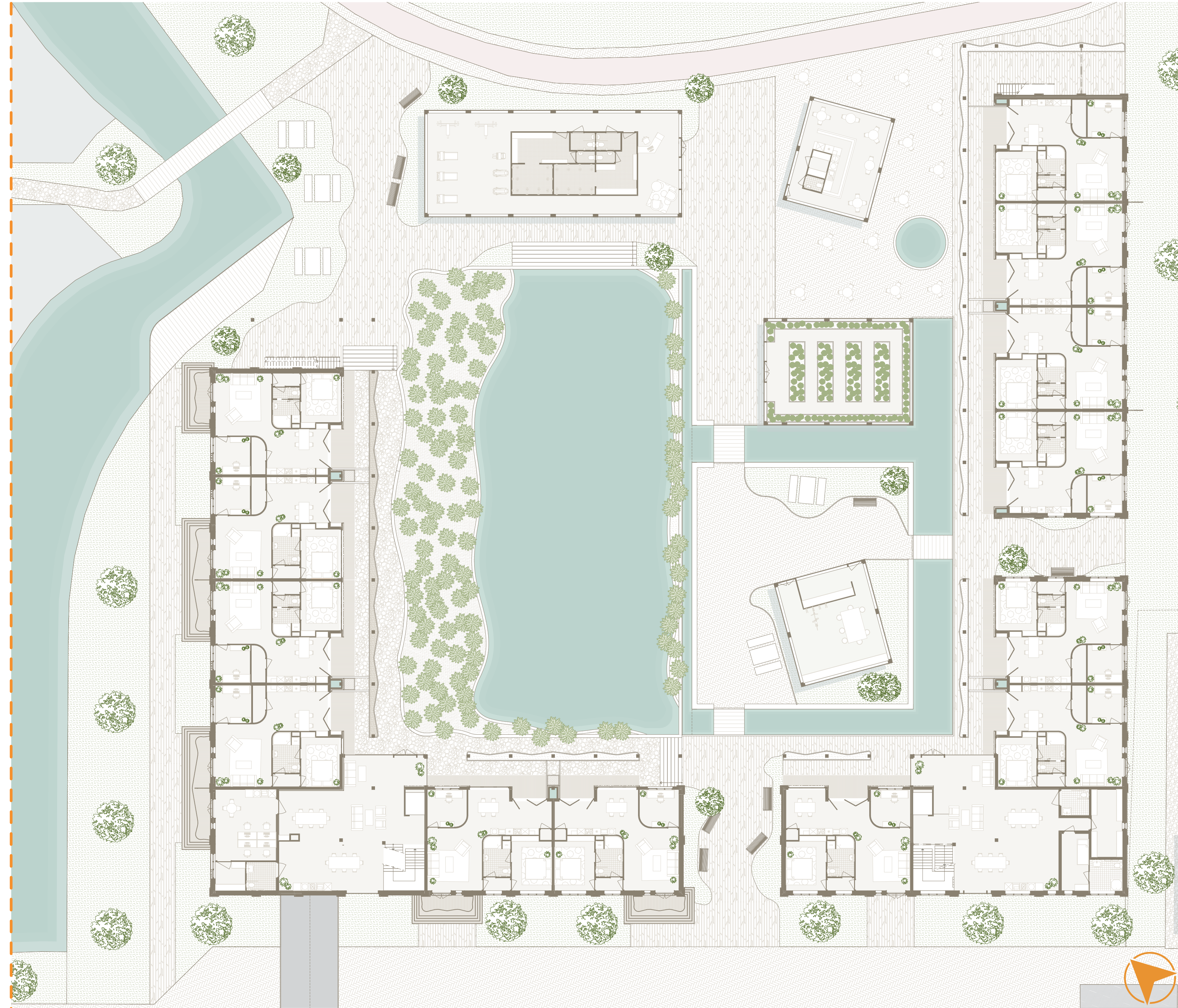
The ageing population in the Netherlands increases the demand for suitable housing for older adults. In Houtwijk, many older residents remain in family homes due to a lack of attractive alternatives within their familiar neighbourhood, limiting housing flow.

A housing complex was designed that combines independent living, communal facilities and a public courtyard. Water serves as the main design element, promoting movement, social interaction, mental wellbeing and ecological value.

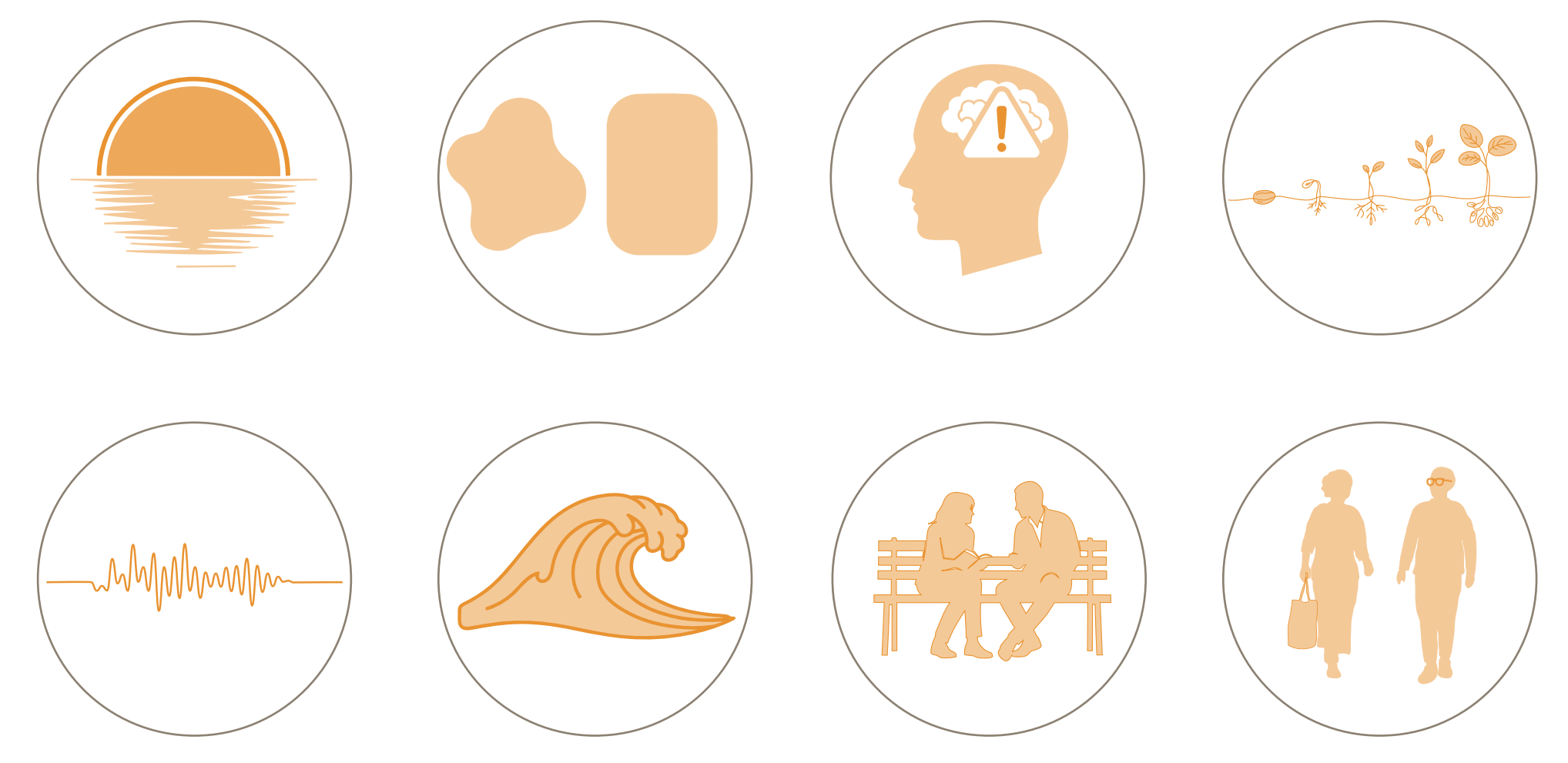
The design demonstrates how architecture can support active ageing and housing flow by providing attractive, accessible housing that enables older adults to relocate locally and free up larger homes for younger generations.



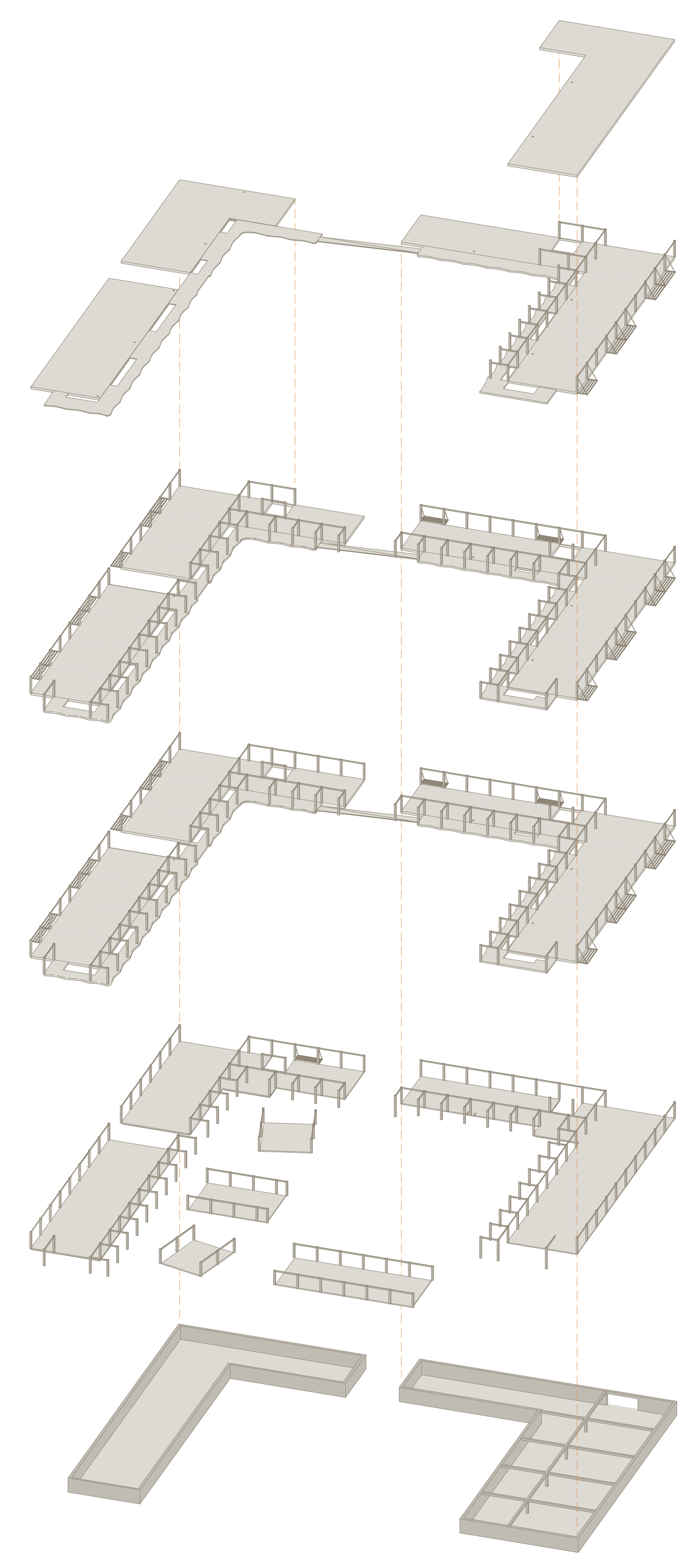
- New boundary
- Tree
- Expansion of boundary
- Sightline



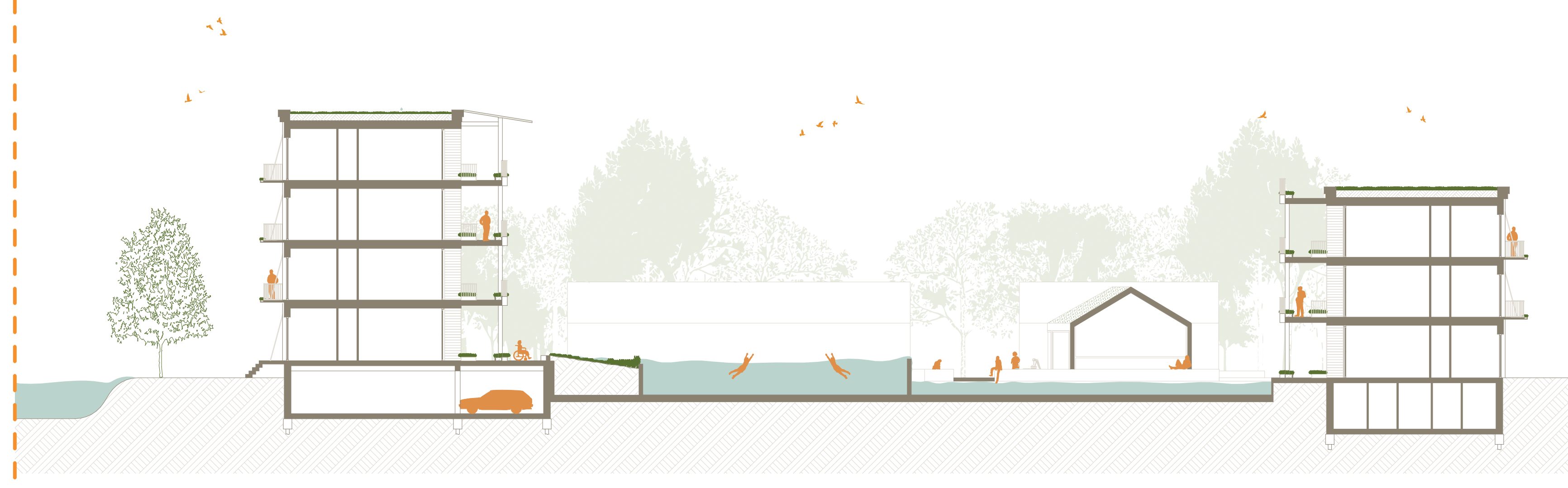
1: 200 Ground floor



Design principles



Axonometric



1: 200 Section



1: 200 West facade - Neighborhood



South facade - Courtyard