



### The context

Four studies, as the primary research contains knowledge and actionable insights for digital health designers to improve PEX, are the foundation of this project. **The digital PEx is how people experience in different digital health contexts.**

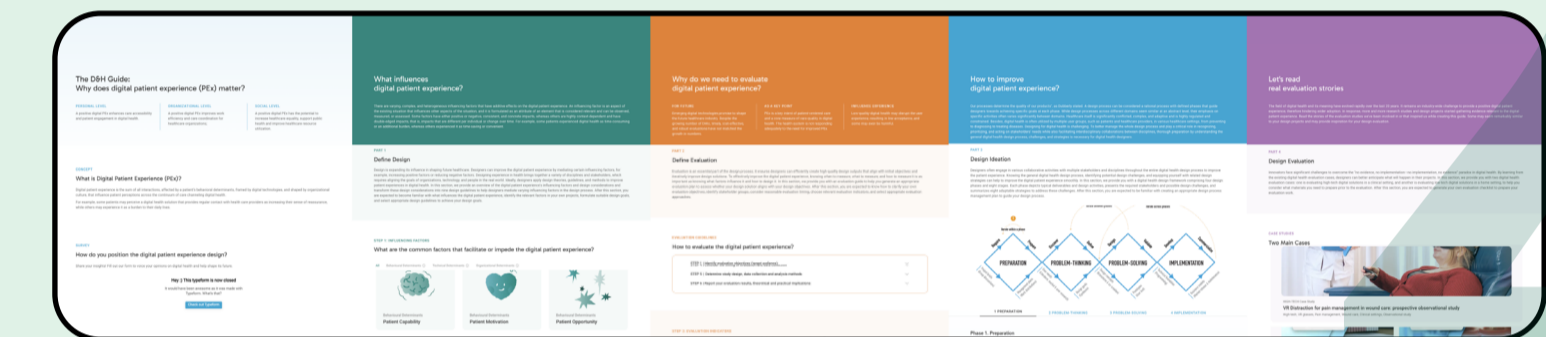
However, the transition of academic research into practical design information faces obstacles, thus **whether practitioners can benefit from the primary research is still unclear.**

### 1 What are the considerations for generating and evaluating a web-based design guide?

The primary research has decided to be transformed into a web-based design guide. The design requirements, based on desk research, are usability, consistency, accessibility, clarity, efficacy, and credibility. The design goal is... **to transform the primary research into a good and usable web-based design guide, enabling healthcare designers to utilize the primary research to improve the digital PEx.**

### 2 How can we generate a web-based design guide?

Various tools and approaches, including walkthroughs, case studies, WCAG 2.0 contrast ratio principle, information architecture, co-creation, expert review, wireframes, and prototypes, have been utilized. The target users, healthcare designers, are expected to comprehend the digital PEx, acquire relevant knowledge, and carry out exercises through this website. **An initial MVP website was created.**



### 3 How should we evaluate this web-based design guide?

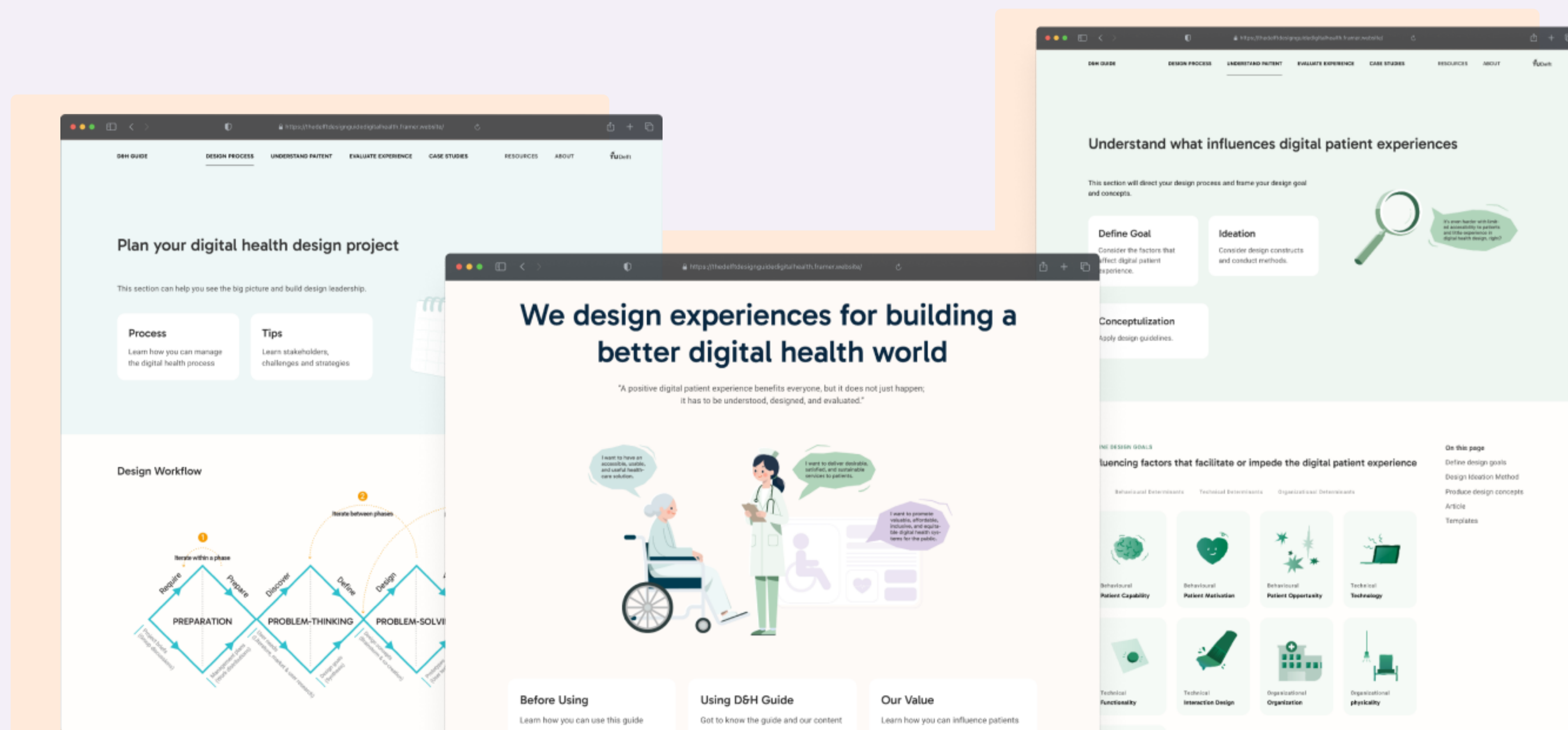
**The initial prototype was assessed by 19 participants, which indicated clarity, efficacy, and website usability needed improvements.** An iteration was accordingly generated, and usability tests with five participants were conducted to validate the iteration.

### Conclusion

A final web-based design guide was formulated. **The final design had expected clarity, efficacy, credibility, color accessibility, internal and external consistency, and acceptable usability.**

# Develop and evaluate a web-based design guide for improving the digital patient experience (PEx)

Enhancing experiences for you, me, and nearly everyone in digital health.



Yun Wang  
Develop and evaluate a web-based design guide for improving the digital patient experience (PEx)  
Dec 20, 2023  
MSc Design for interaction

**Committee** Chair: Prof. dr. Rietjens, J.A.C.  
Mentor: MA. Wang, T.  
**Company** N/A