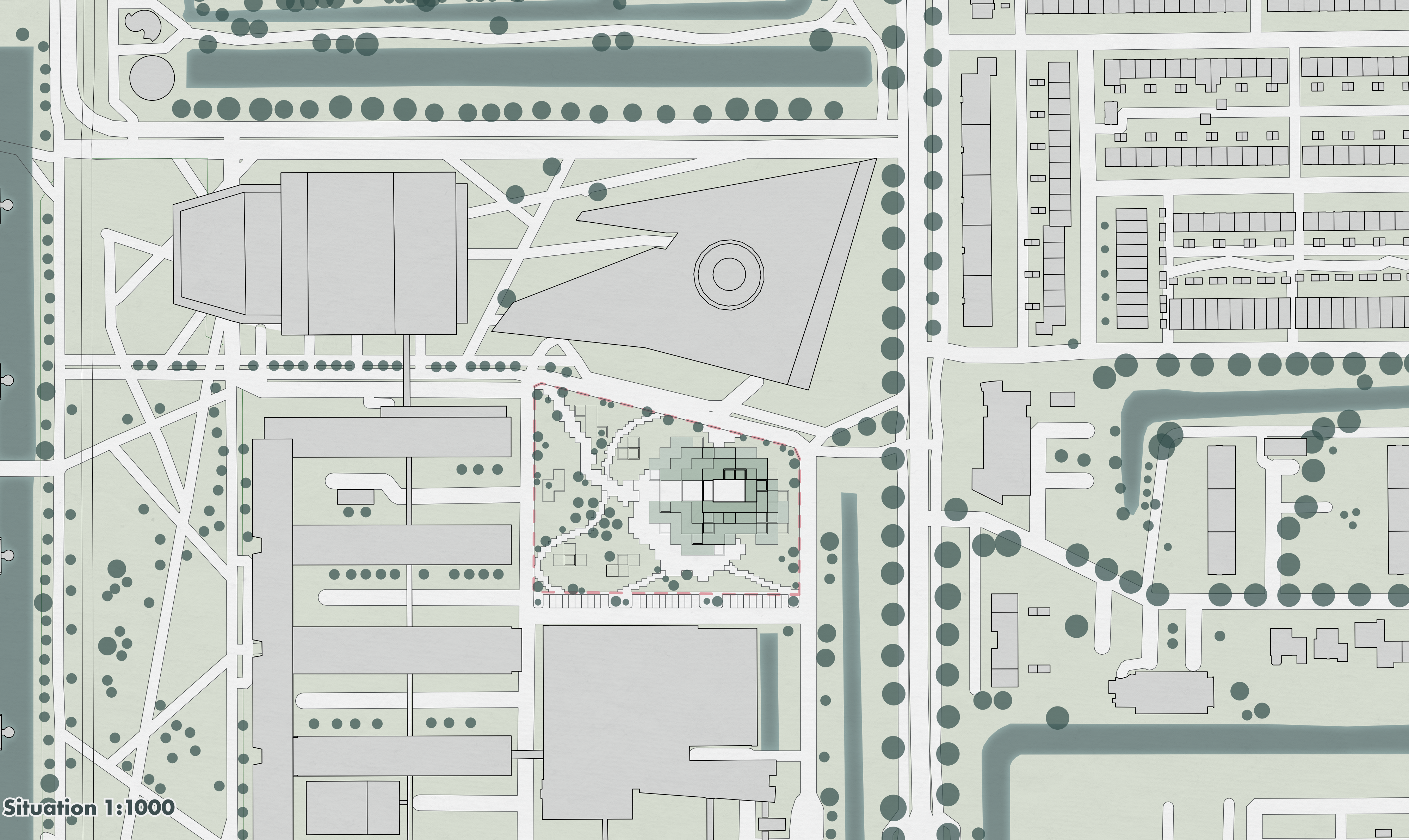
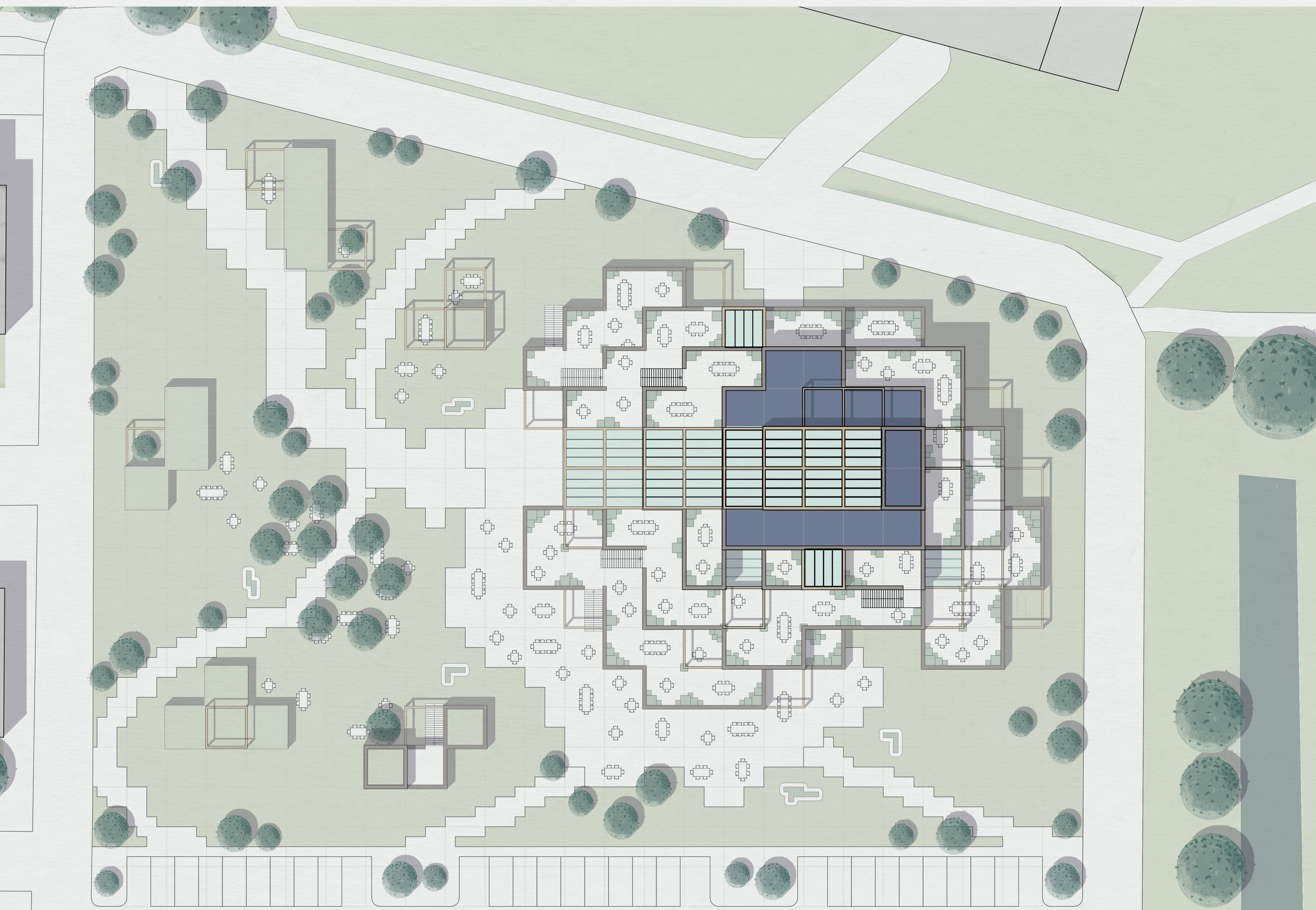


Voxel

AR3AD110 - Designing for Health and Care
Esmee Heemskerk - 5079543

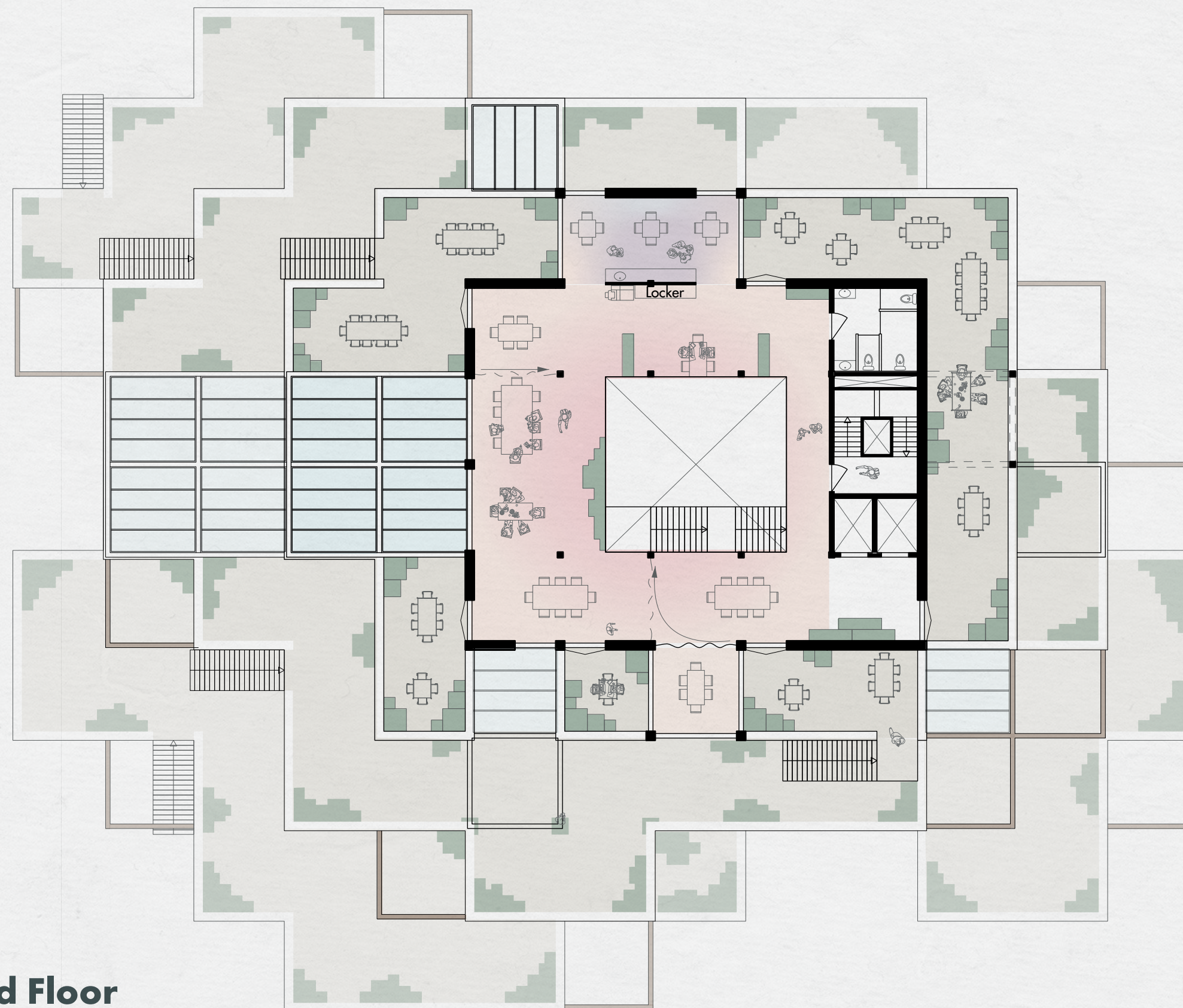


Situation 1:1000

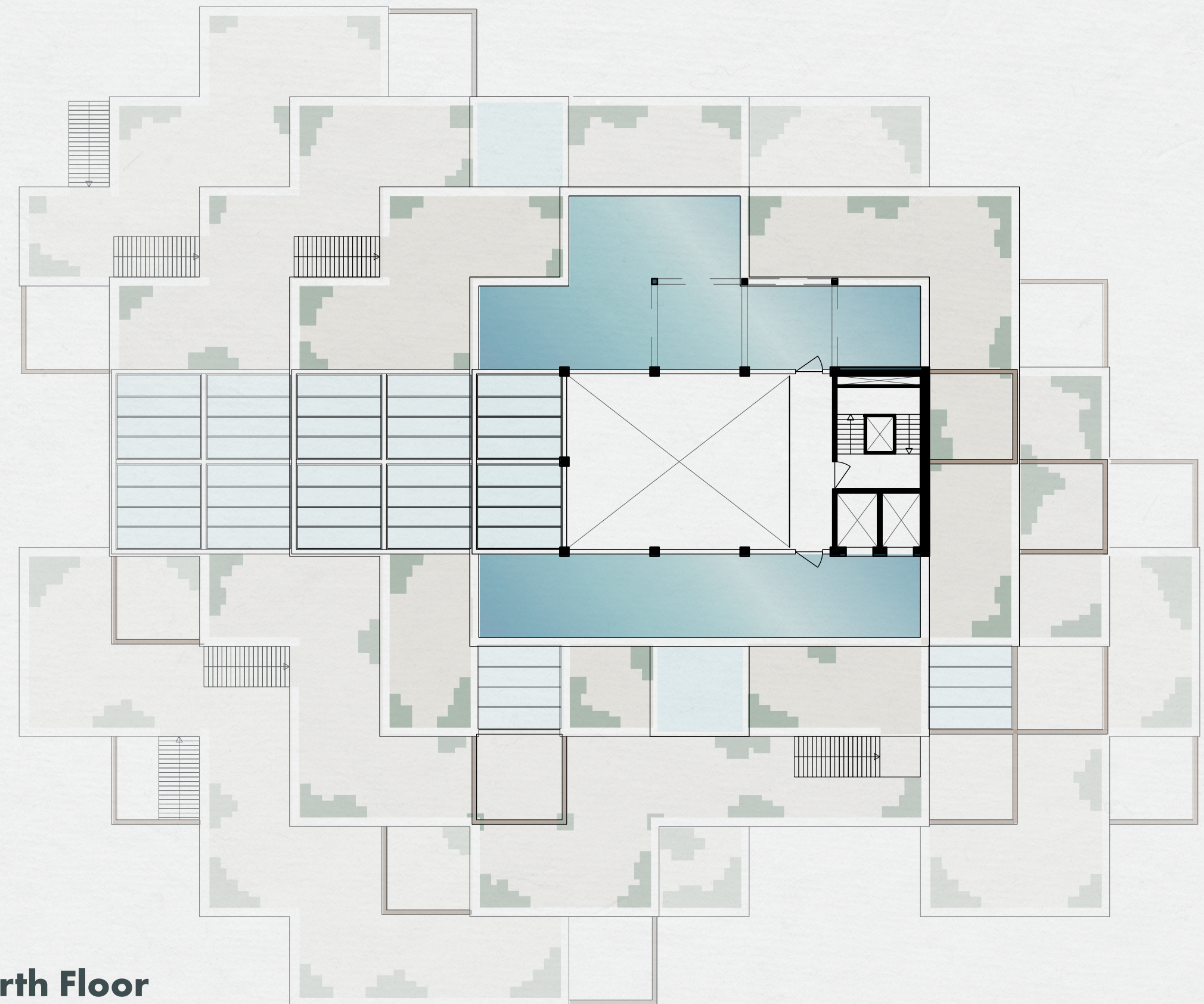


Landscape plan 1:250

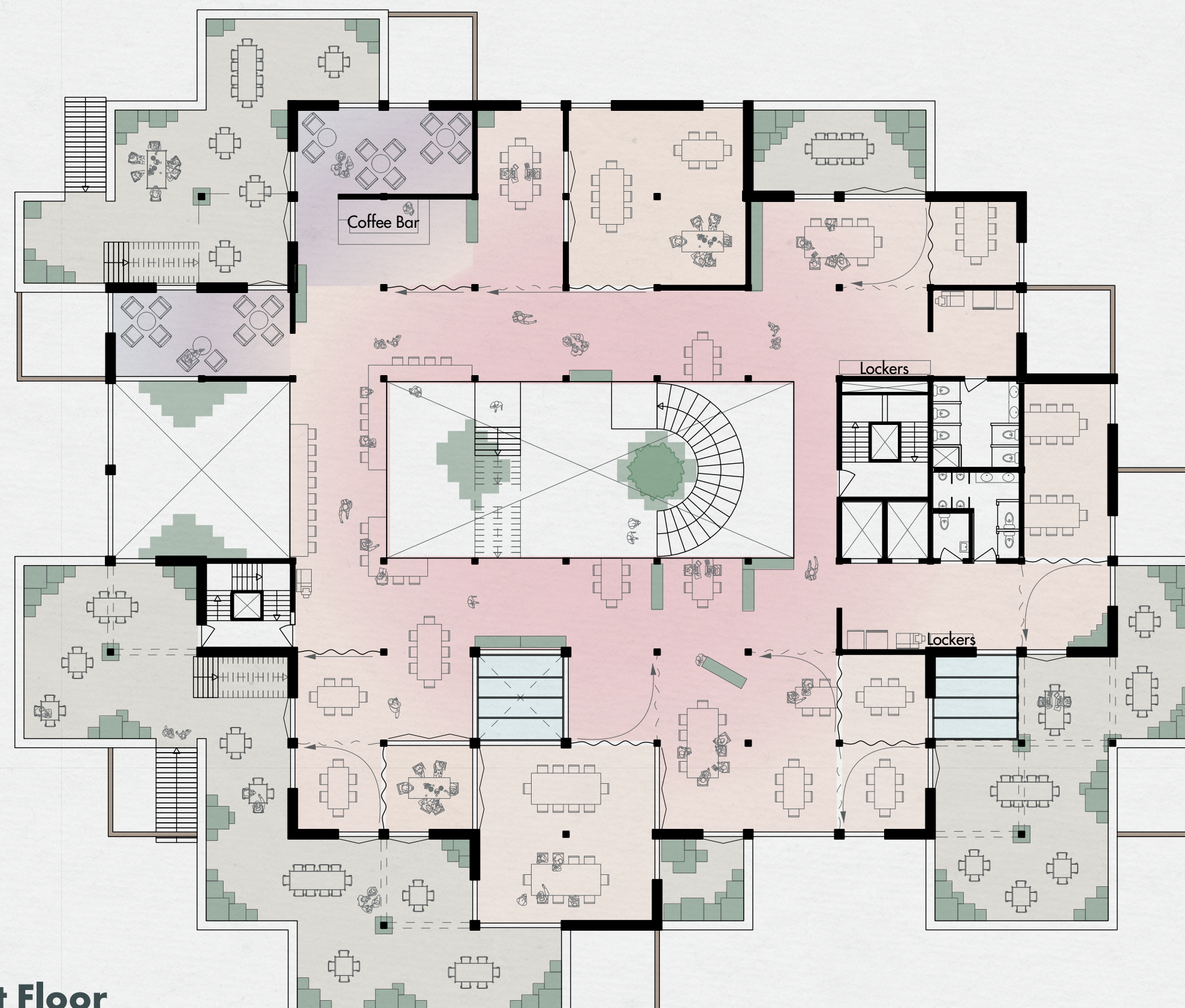
Third Floor



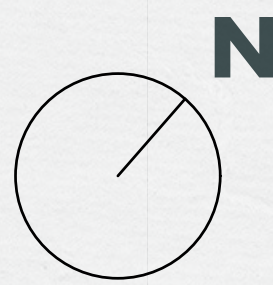
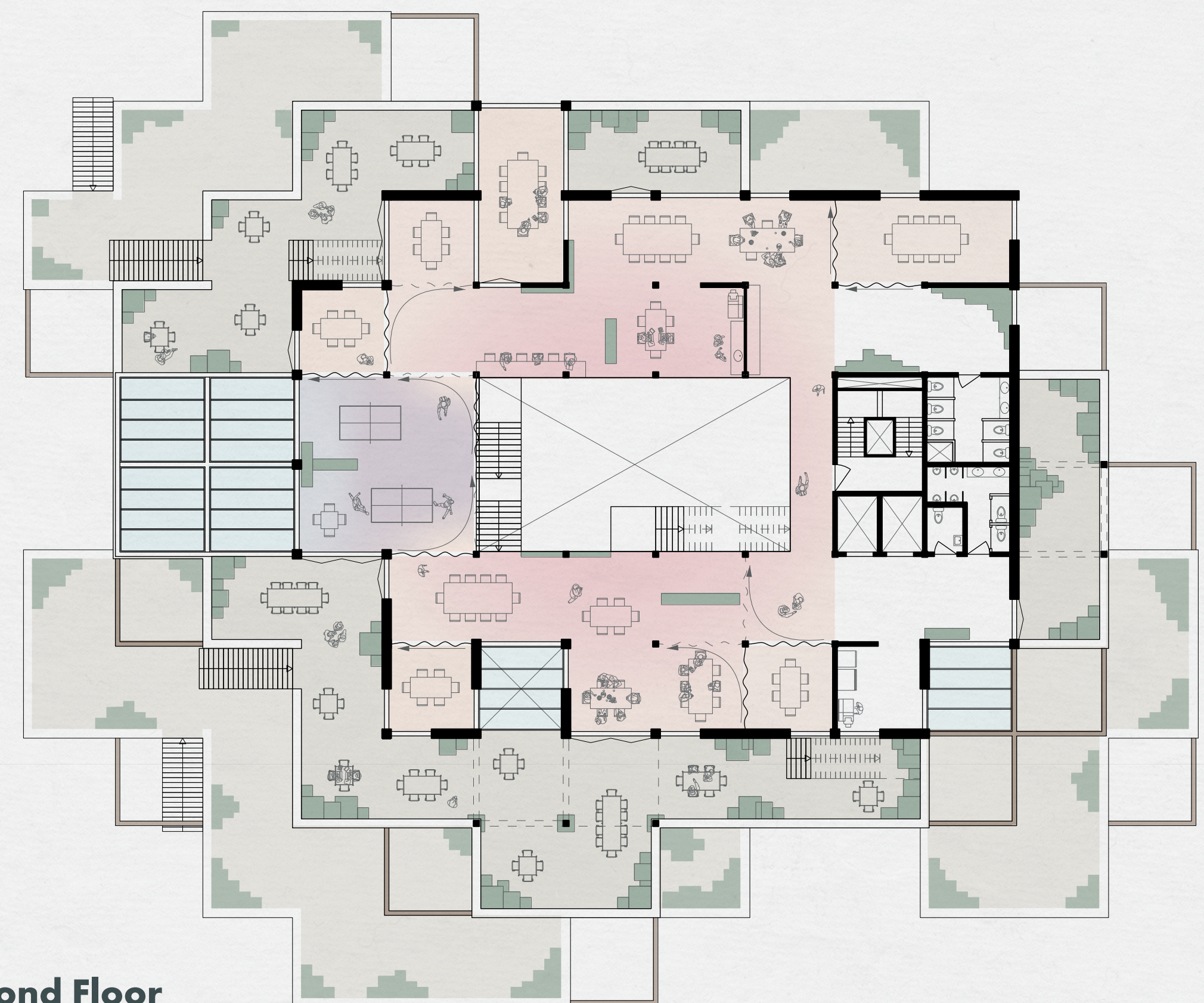
Fourth Floor



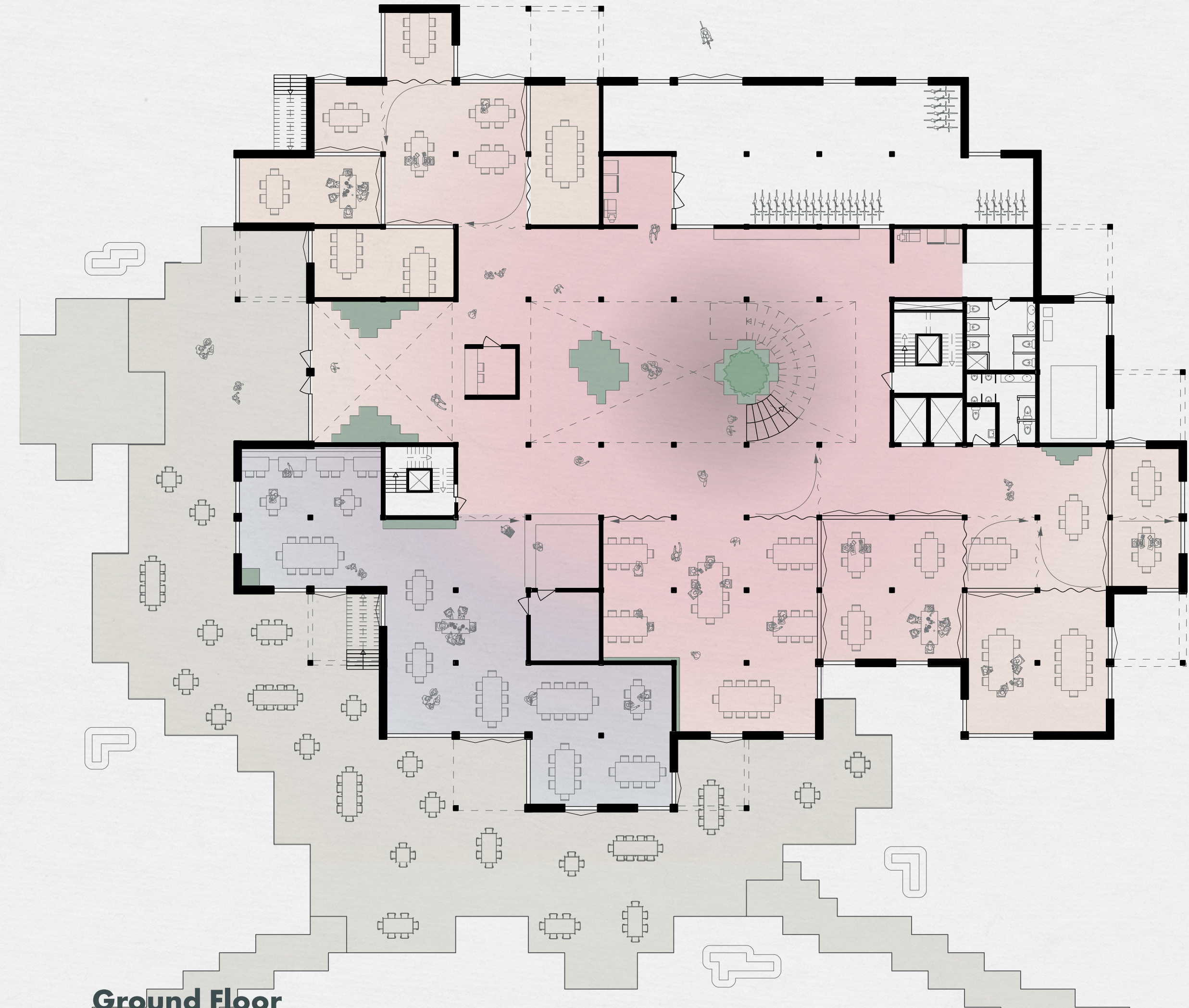
First Floor



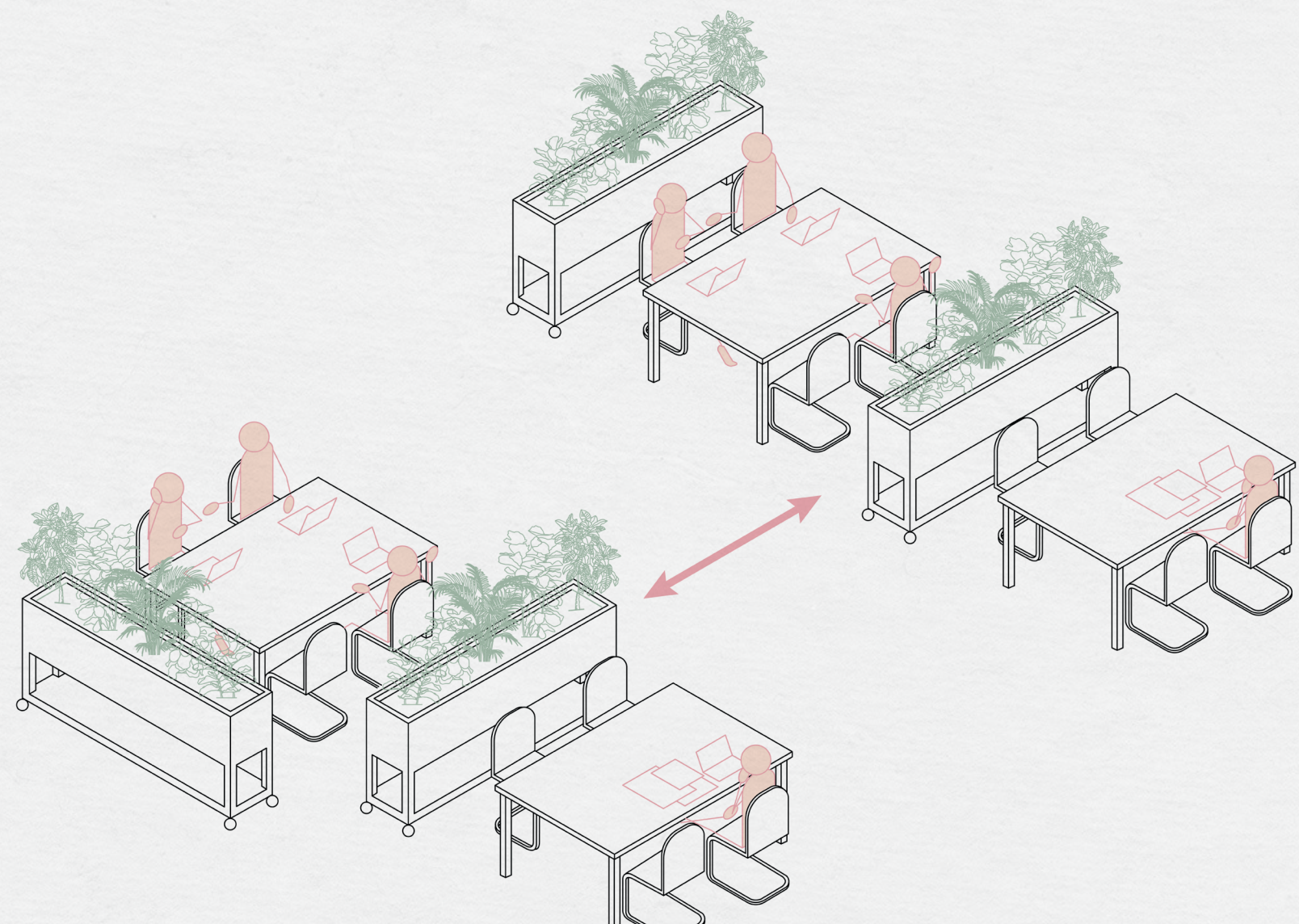
Second Floor



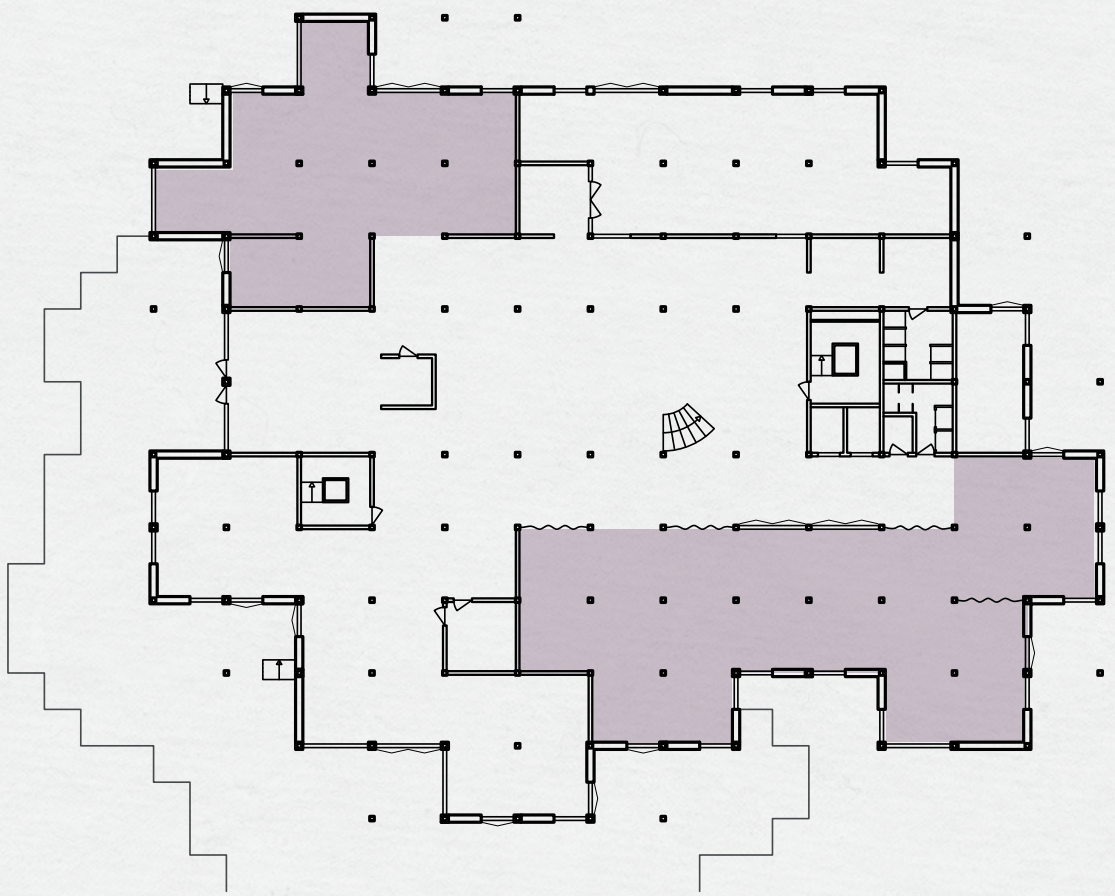
Ground Floor



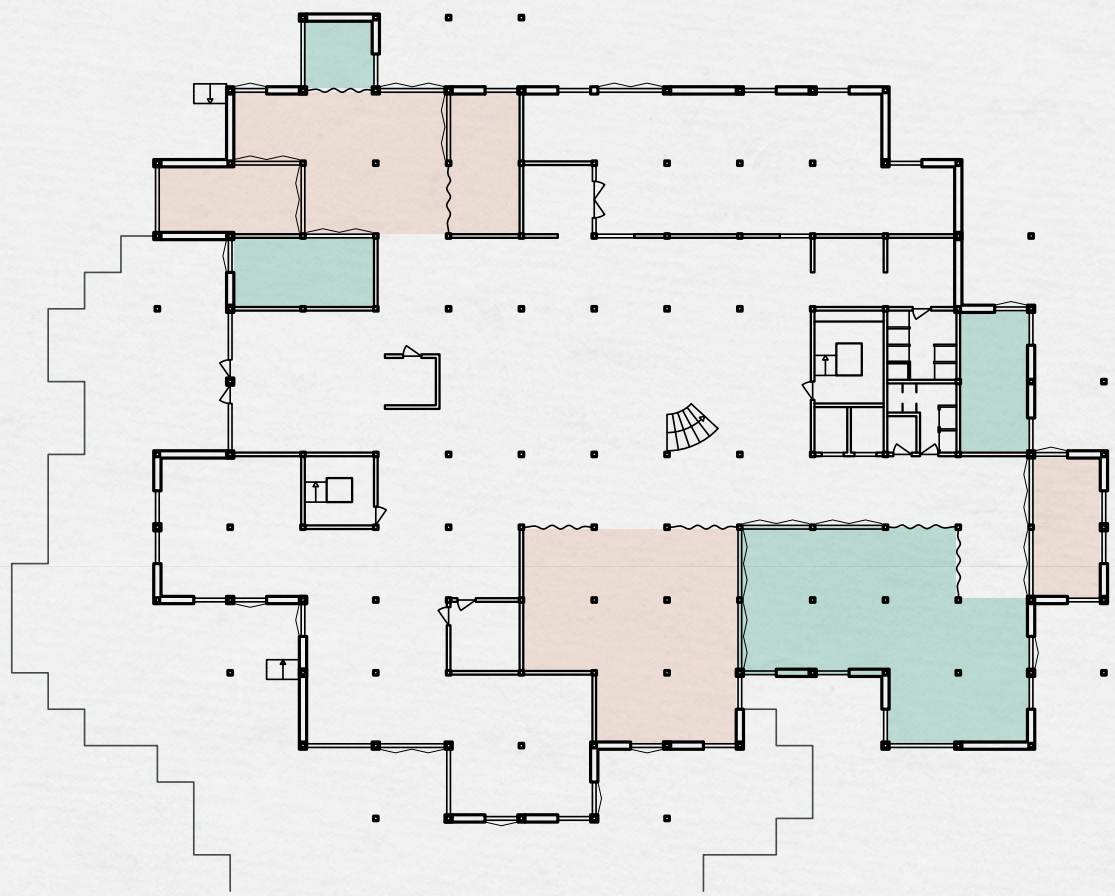
- Study Space
- Food Corner & Relaxing Space
- Plants
- Outside Space



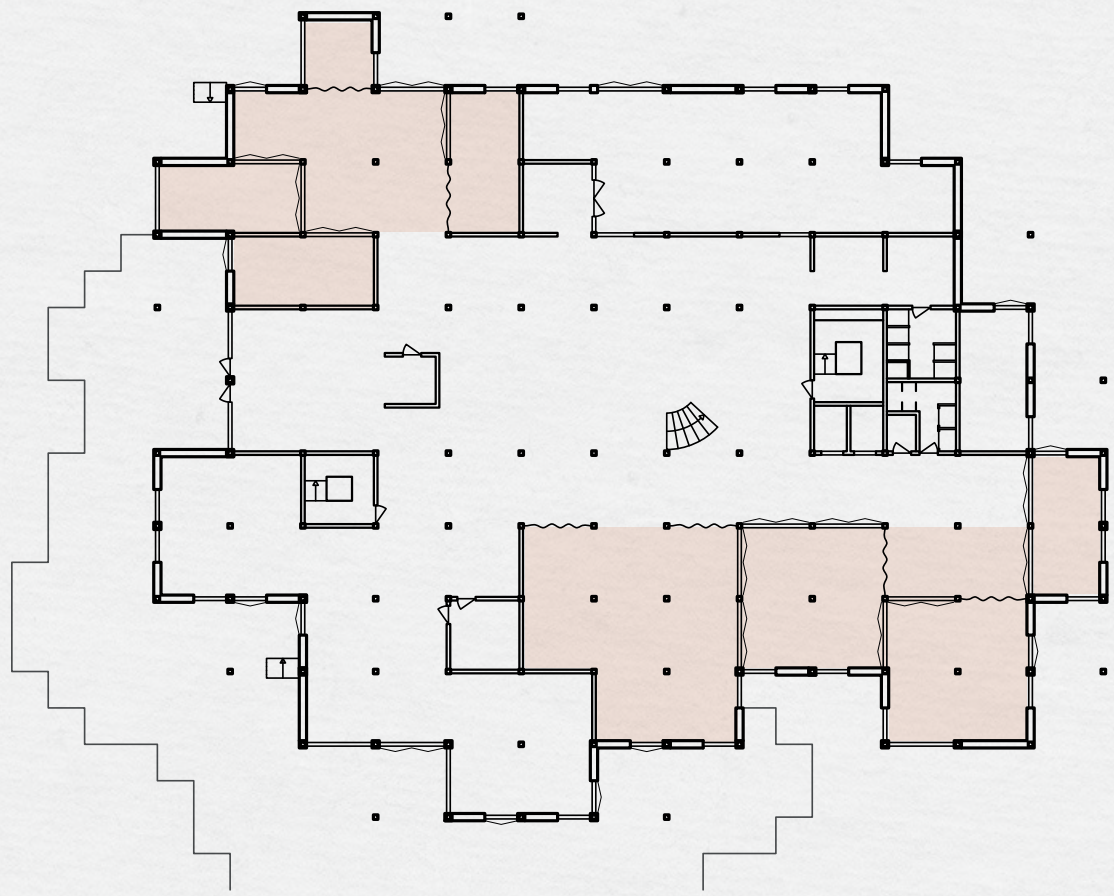
Planters as room dividers



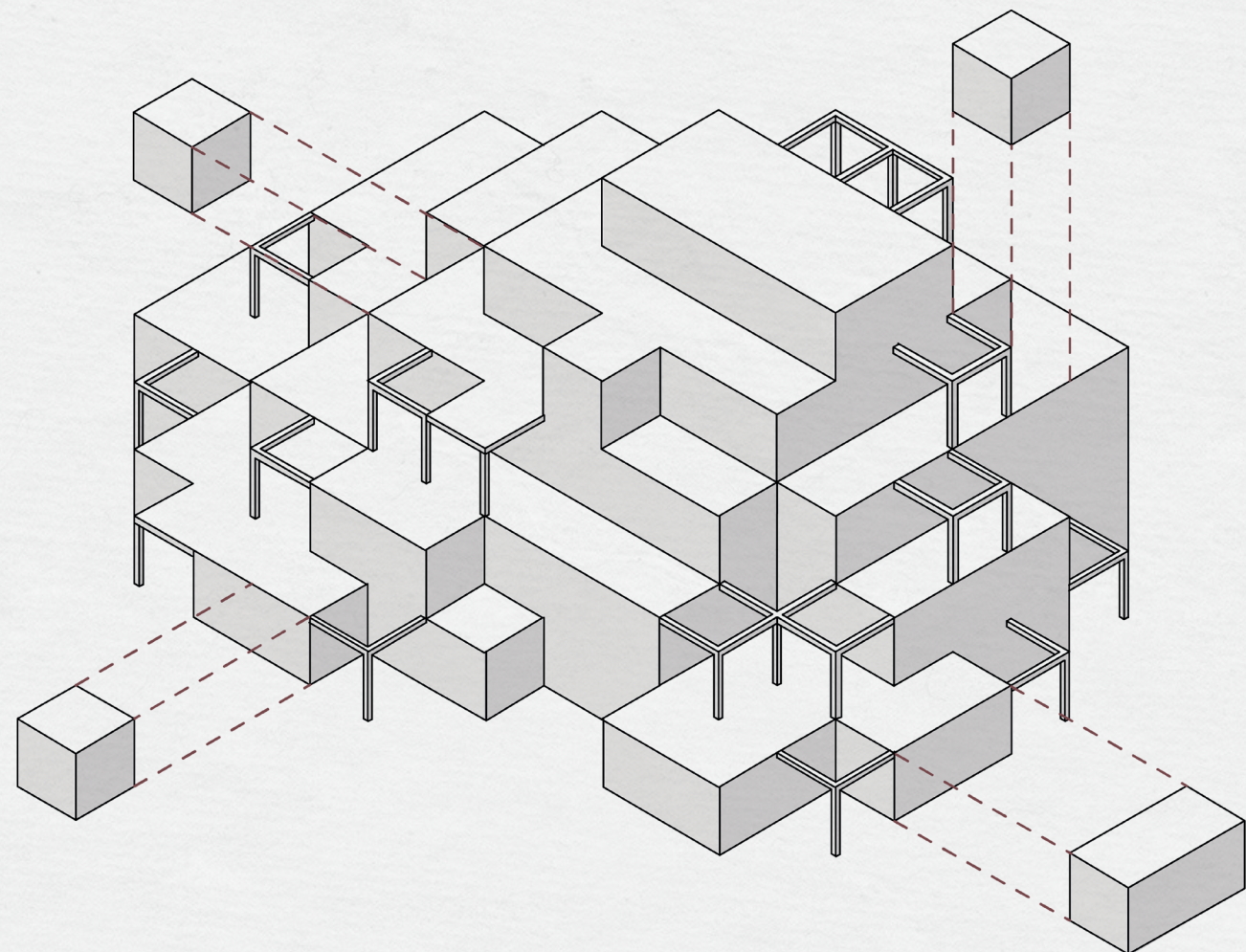
Event



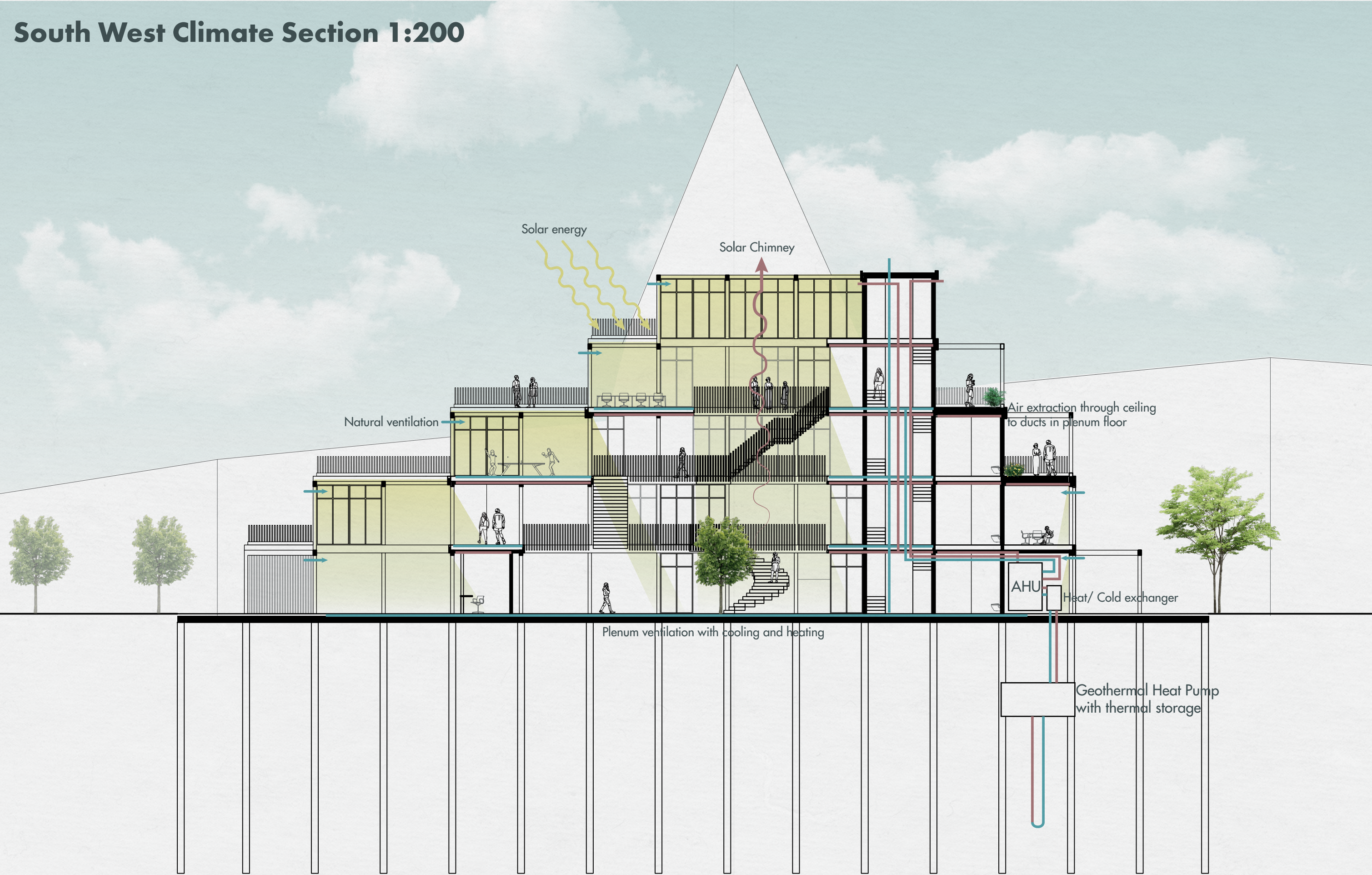
Studying & Office rental



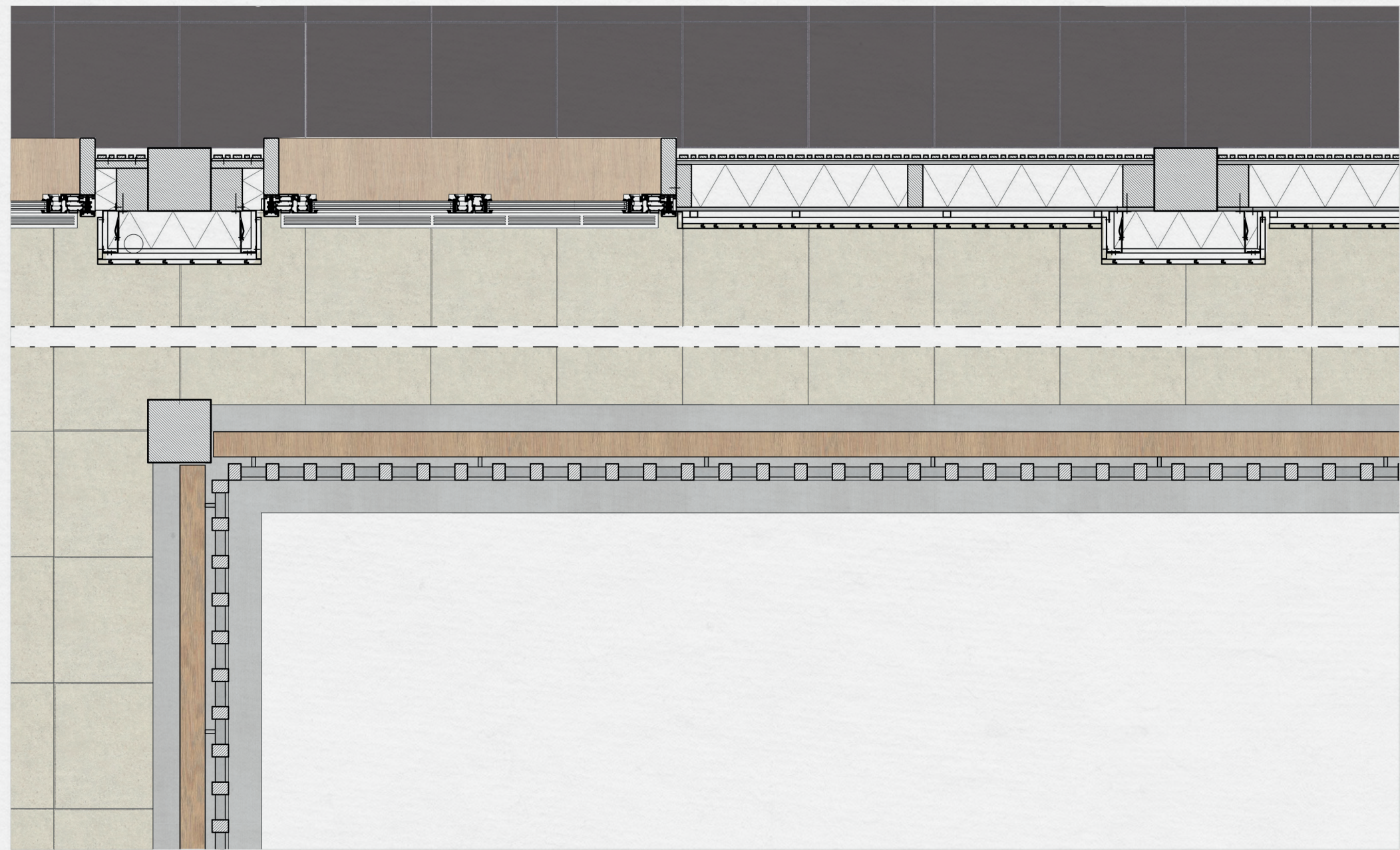
Studying



Future adaptability



An architectural elevation of a modern building facade. The design features large, light-colored rectangular windows and sections of vertical wooden cladding. A balcony with a dark metal railing runs across the middle of the facade. Three people are standing on the balcony: a woman in a light blue top and dark pants on the left, and a man in a yellow jacket and red beanie on the right, who is gesturing with his hand. The building's structure is composed of various geometric forms, including rectangular panels and triangular sections. The overall style is clean and contemporary.



South West Elevation 1:200

