

# REINVENTING RURALITY

EXPLORING WAYS TO REVITALIZE  
MASTOROCHORIA OF KONITSA, GREECE



| P5 PRESENTATION, NOVEMBER 2021 |

*Dimitrios Trompoukis*  
5150485

*First Mentor: Lei Qu*  
*Second Mentor Luisa Calabrese*  
*External Examiner: Wido Quist*

## A MULTI-SCALAR APPROACH

From Epirus region to Mastorochochia

Greece



Epirus region



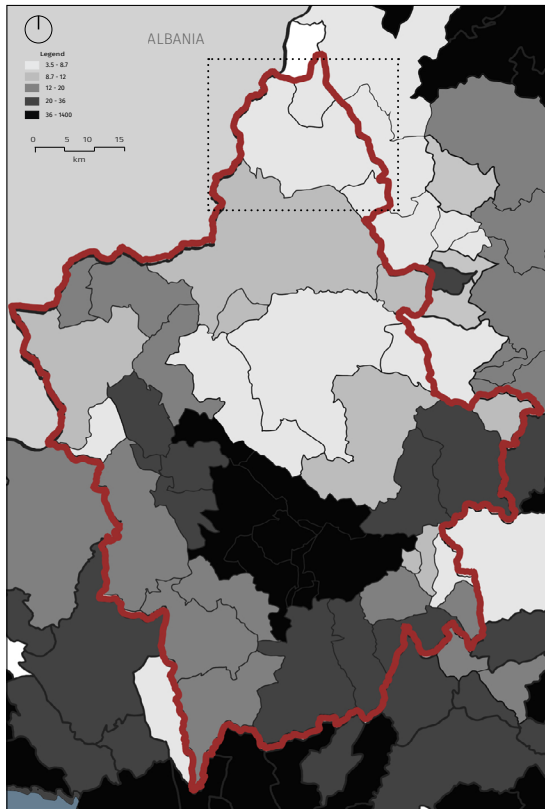
Konitsa Municipality



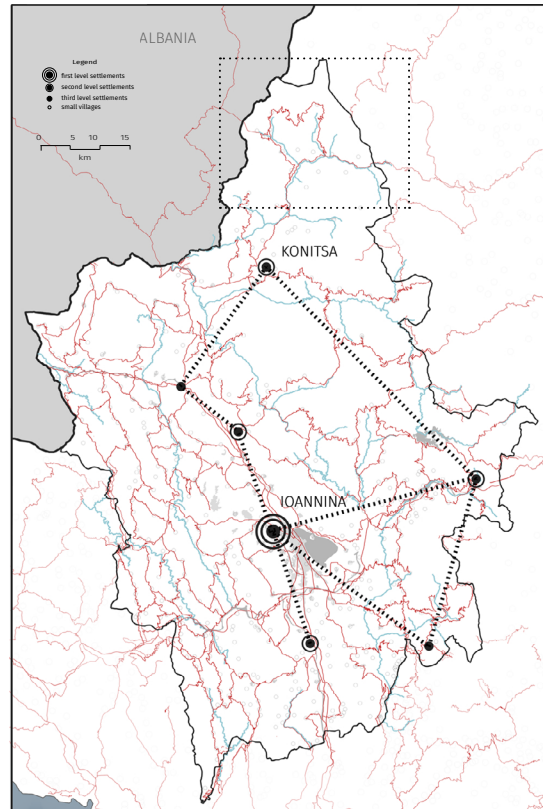
Mastorochochia



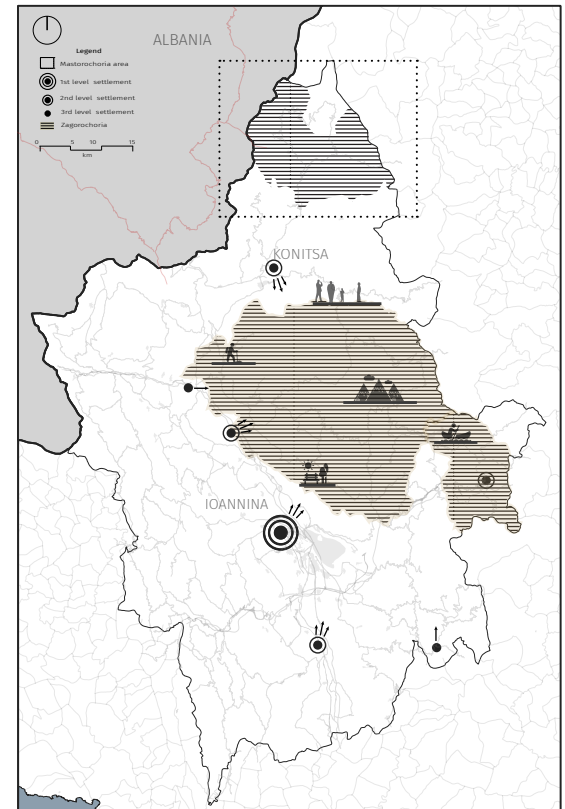
diagnosis



density

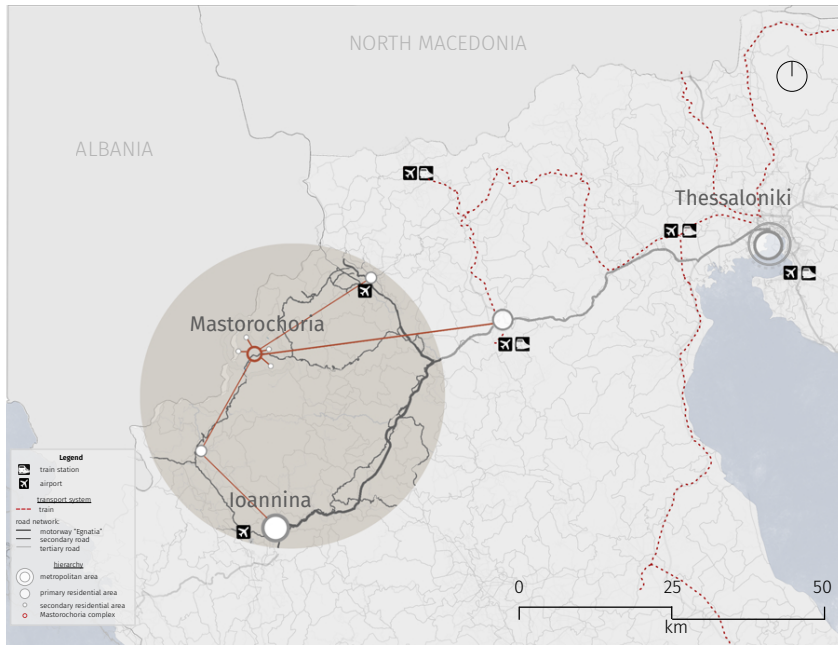


road network

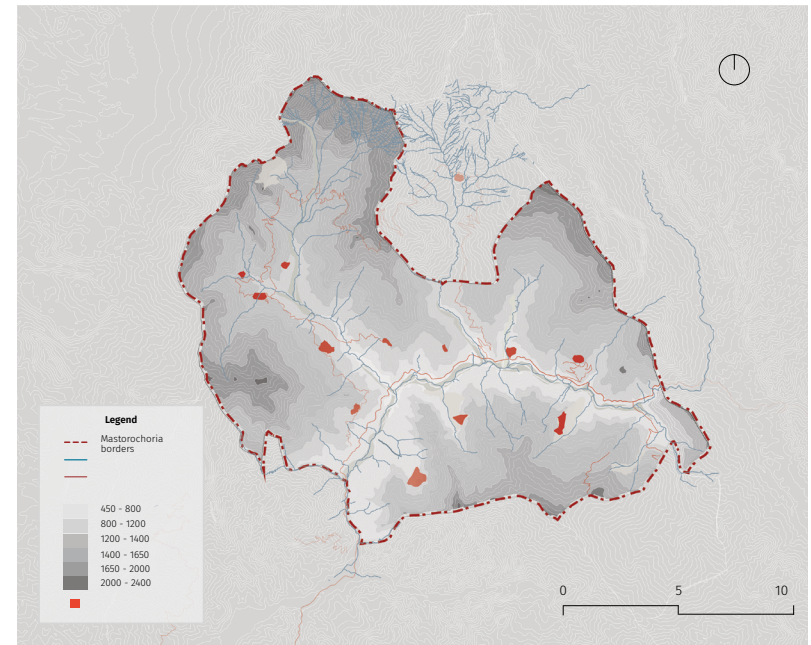


pressures

diagnosis



Mastorochochia in a wider context



the terrain of Mastorochochia

etymology

craftsmen  
("mastores")

+

villages  
("choria")

**MASTOROCHORIA**



*According to Thomas More,  
"utopia means finding the  
utopia of the local"*



genius loci: the spirit of the place



00:00:46 - 00:00:57



00:14:40 - 00:14:42

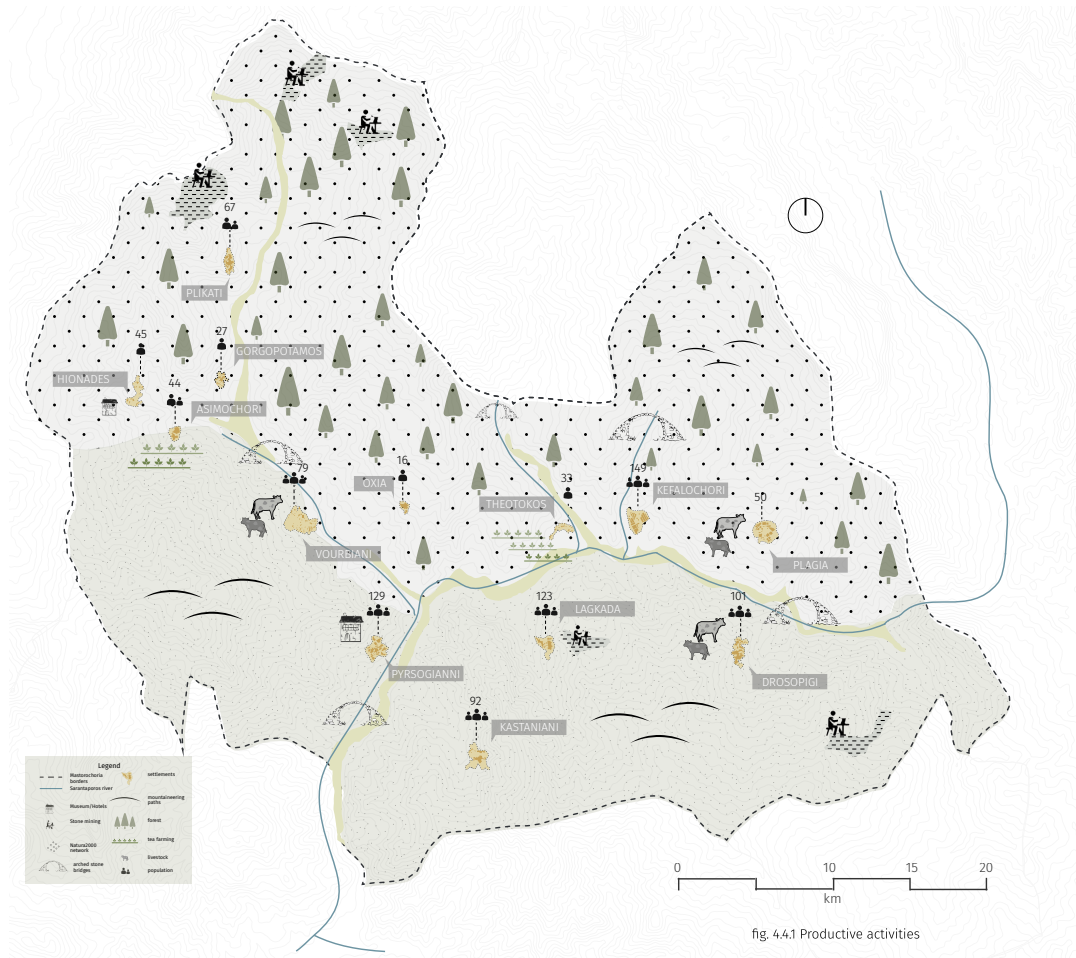


00:03:17 - 00:03:29

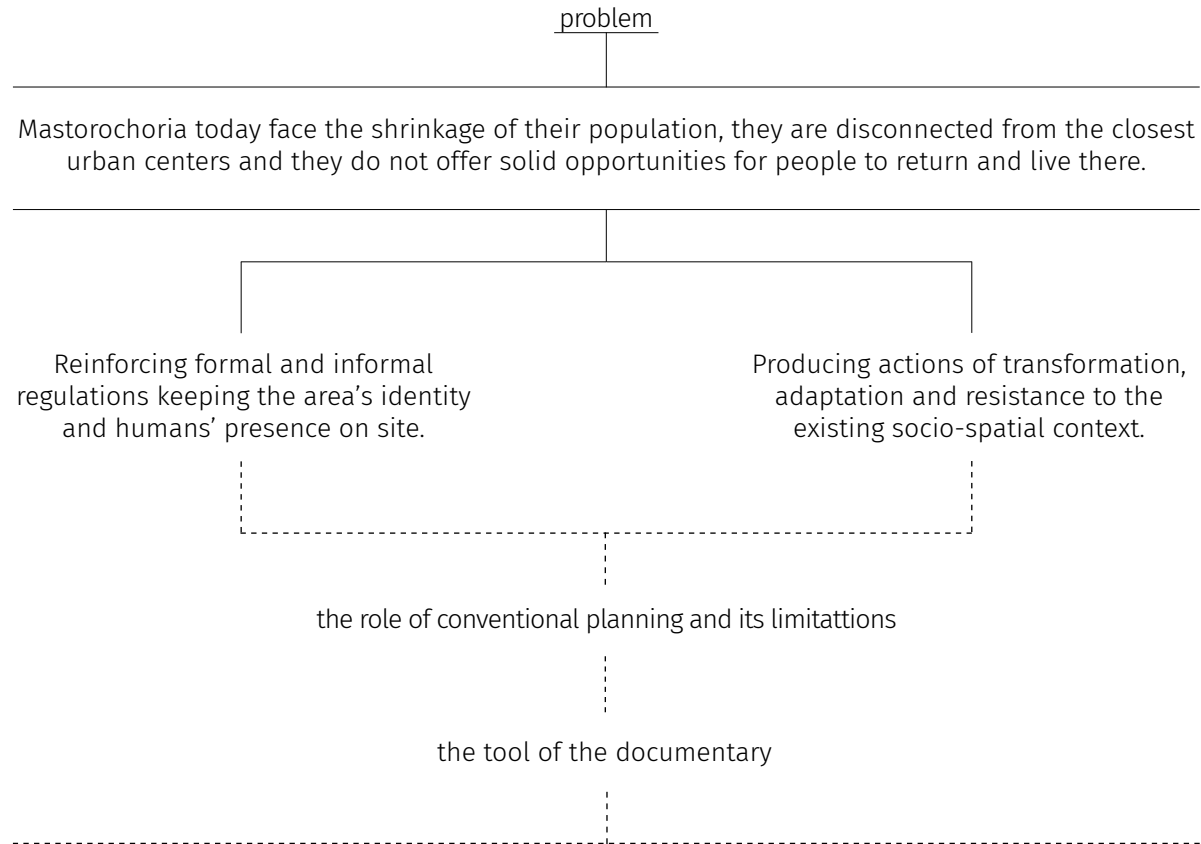


00:17:40 - 00:17:53

current situation



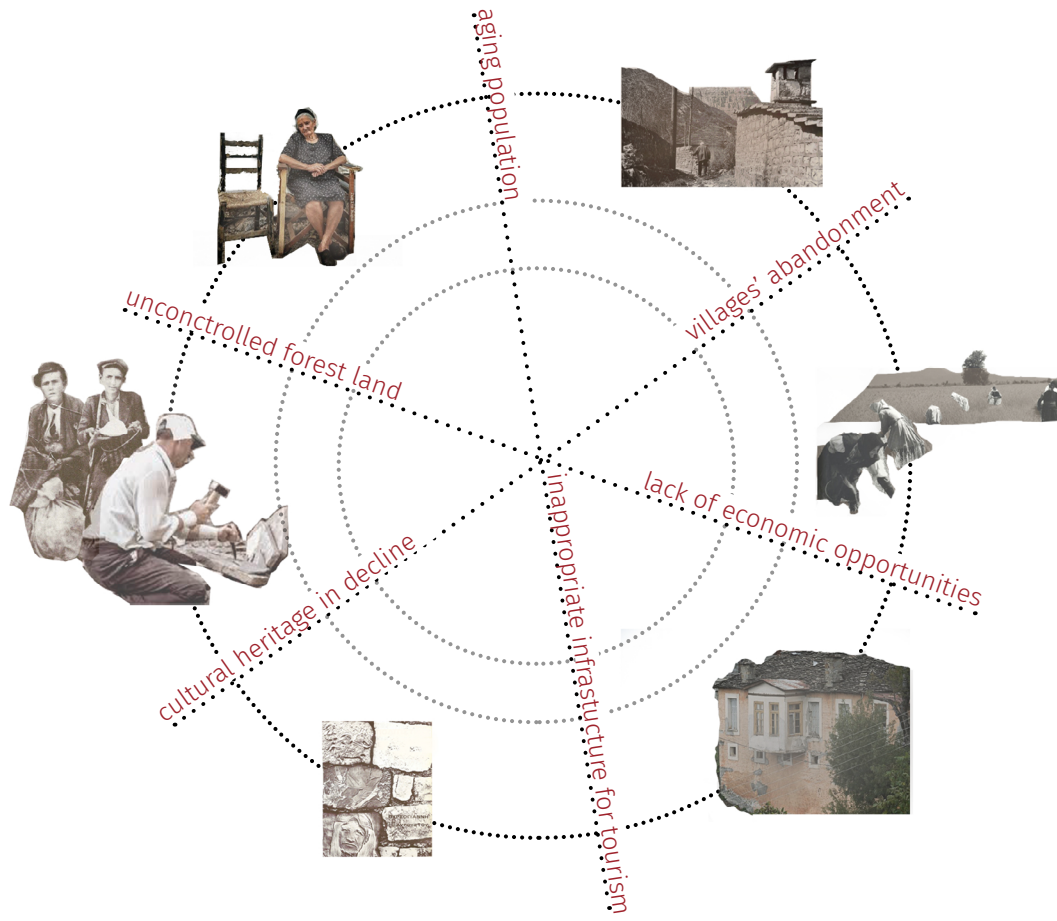
the conventional planning and its limitations; documentary as an integral part of the planning practice



*"The language of a film, which can be generalized, simplified, evocative and emotive, rather than didactic, is perhaps the most effective way to obtain the necessary result of awareness"*

Ciacci, 2010

current traits



06:26 - 06:26



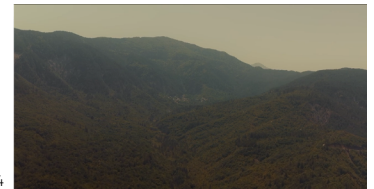
06:27 - 06:31



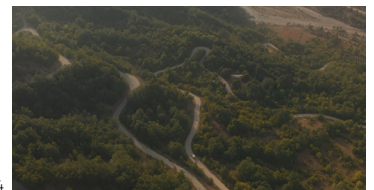
06:56 - 07:06



08:17 - 08:24

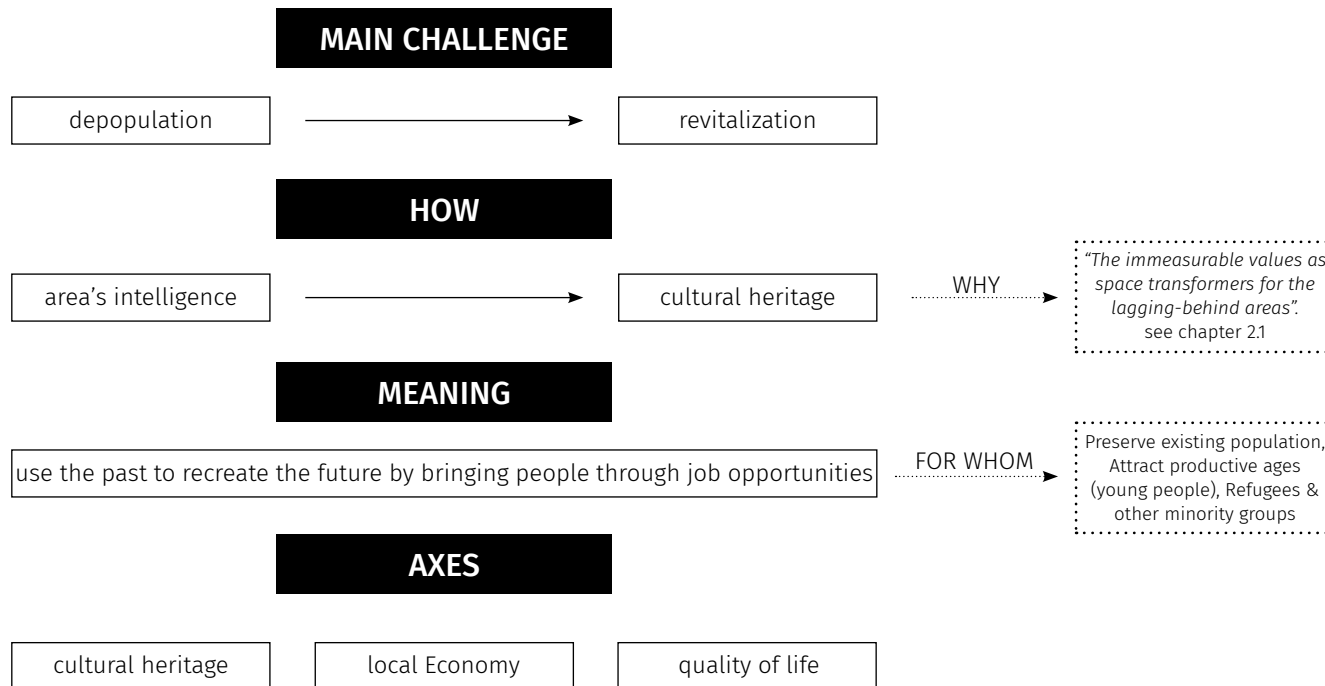


10:14 - 10:24



11:26 - 11:30





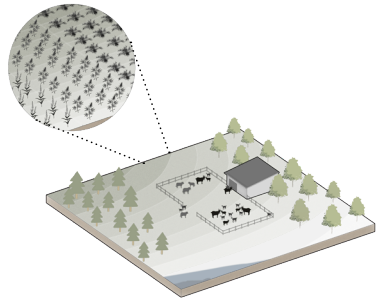
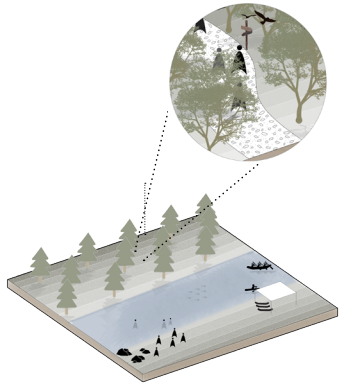
*"What kind of strategic framework could make use of the **cultural heritage** of Mastorochoiria, in order to achieve the improvement of the local population's **quality of life** as well as an **endogenous and sustainable development**?"*

## **VISION & STRATEGY**

VISION



traditional bridges

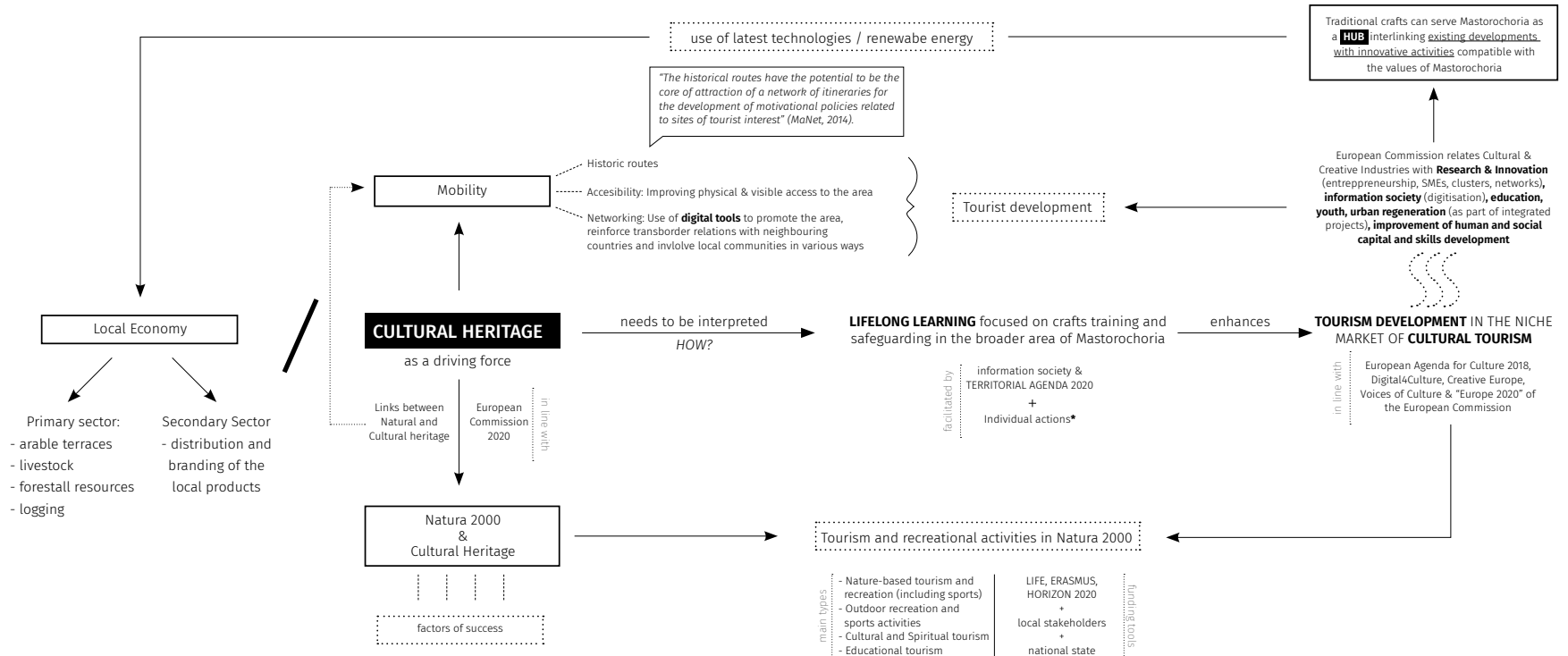


ALBANIA



- Mastorochoria borders
- Main road network
- Waterway
- better connection between these villages
- emphasis on these villages
- Close relations with Albania
- residential fabric
- paths for hiking
- natura2000
- tea farming
- livestock area
- school of stone
- health center
- cultural center/ museum/ hotel
- water sports
- cultural festivities
- site for mining stone

strategic guide based on the existing framework



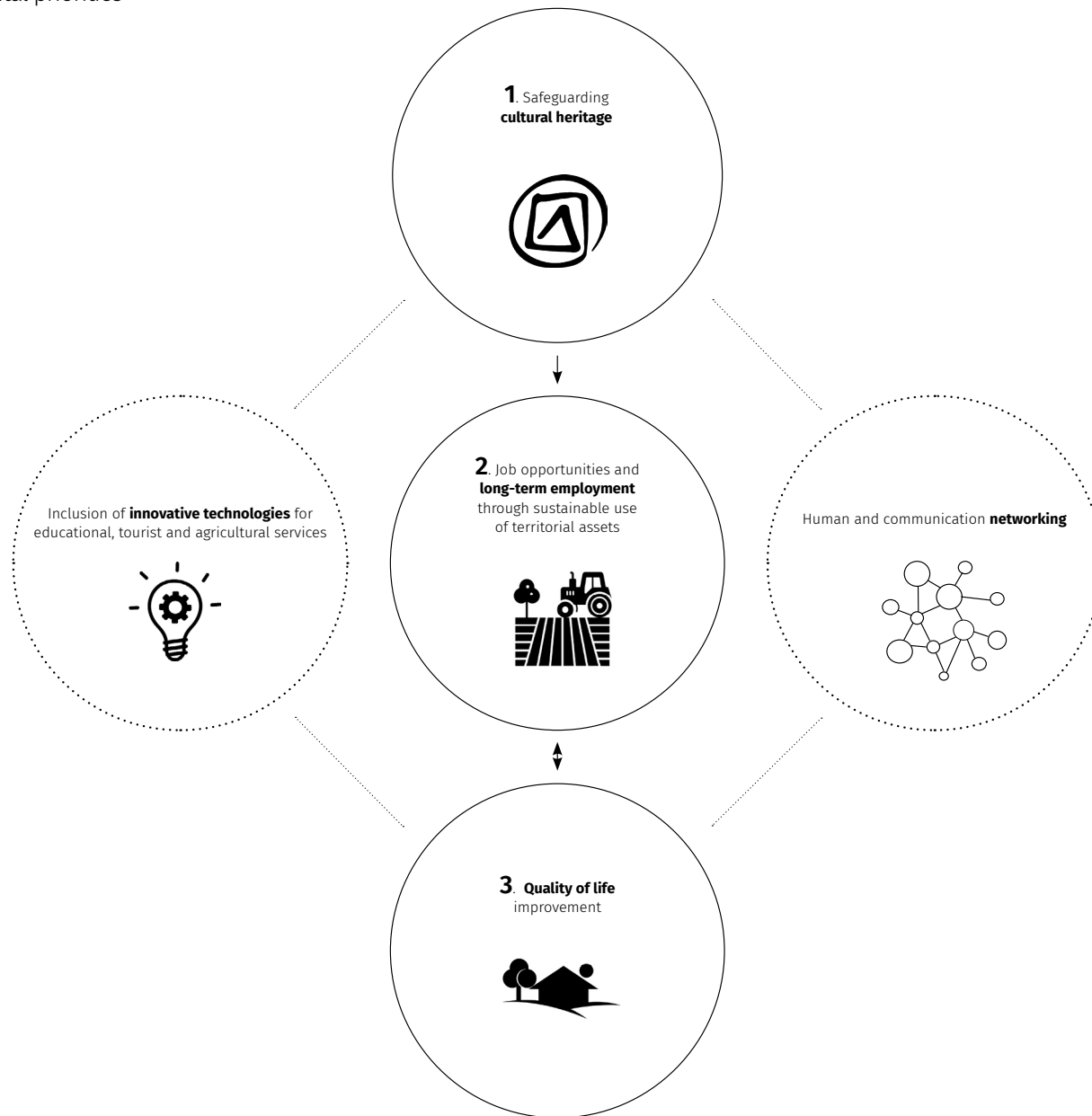
bottom up initiatives



top down instruments



vertical and horizontal priorities



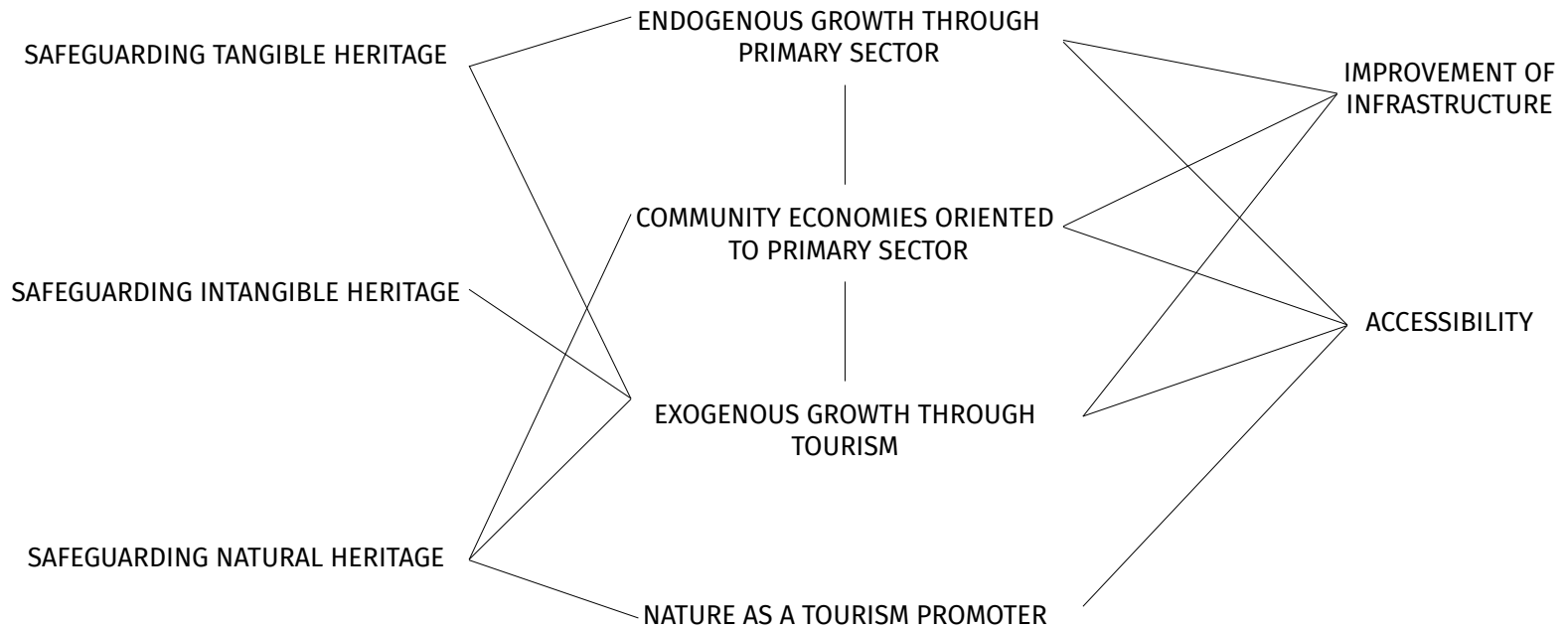
strategic goals



**SAFEGUARDING CULTURAL HERITAGE**

**LOCAL ECONOMY**

**QUALITY OF LIFE**



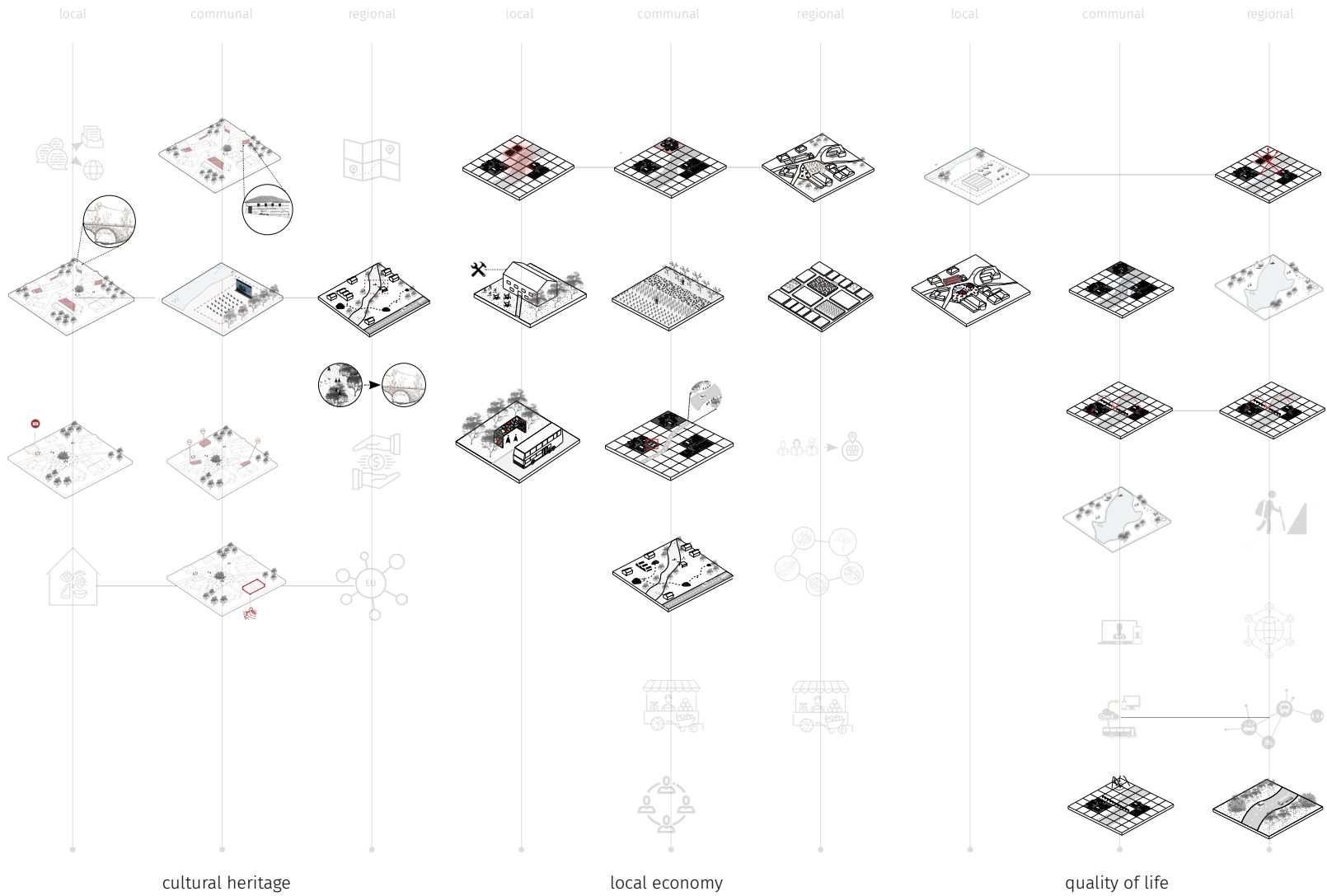
concept

authenticity & memory



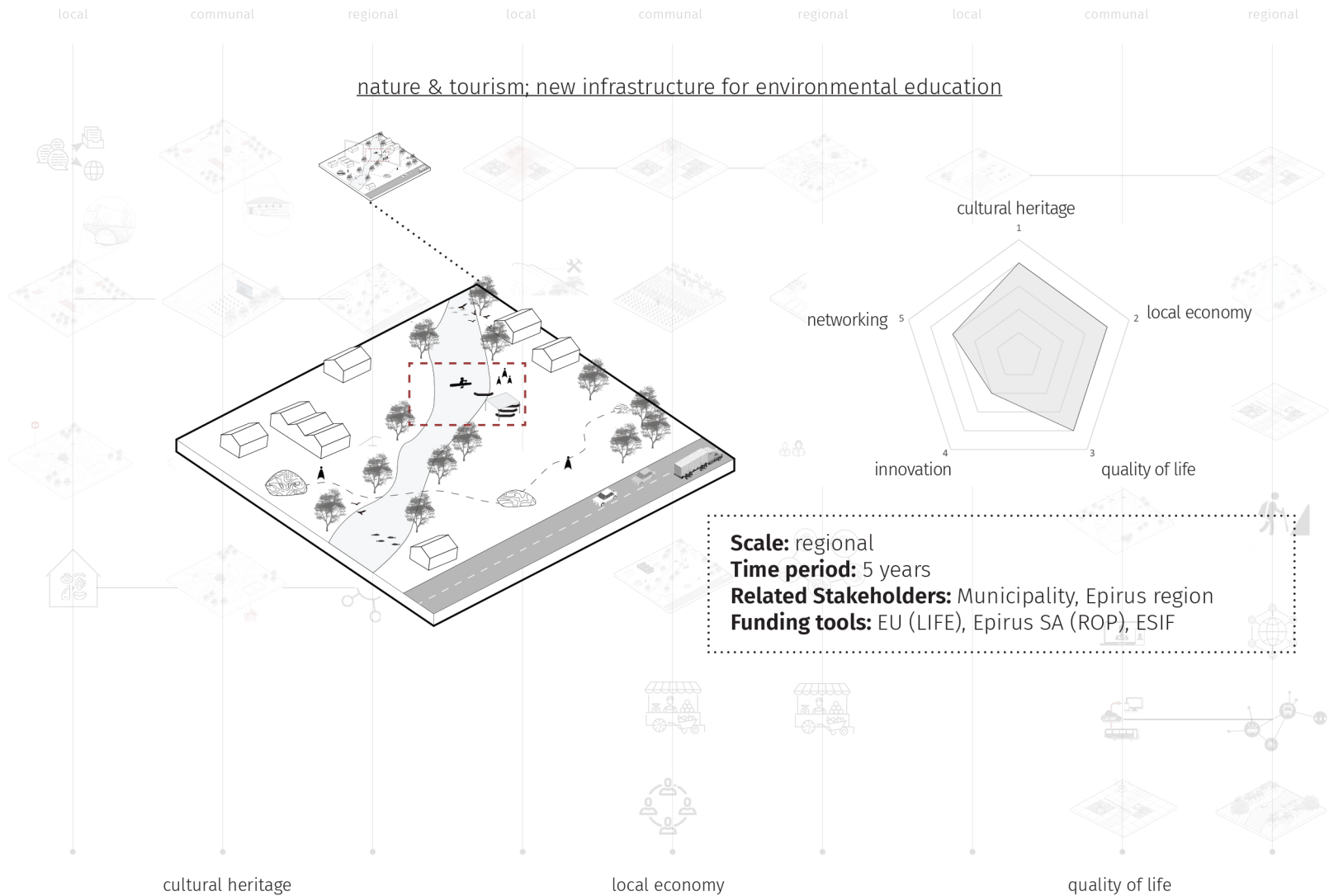
*"...people's identity  
is rooted in their  
memories..."  
Jorge Luis Borges*

proposed interventions with a strong spatial impact

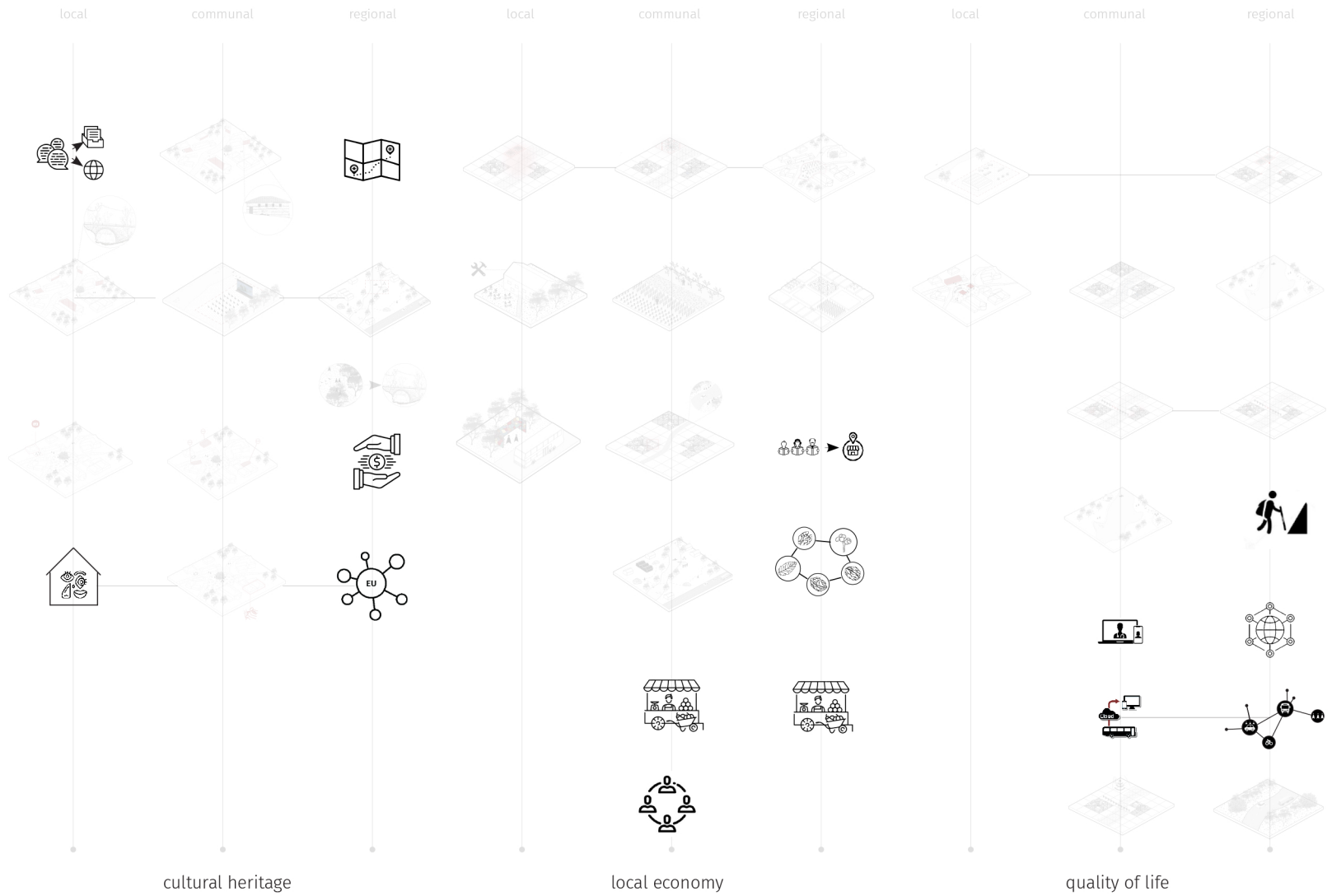


proposed interventions with a strong spatial impact; example

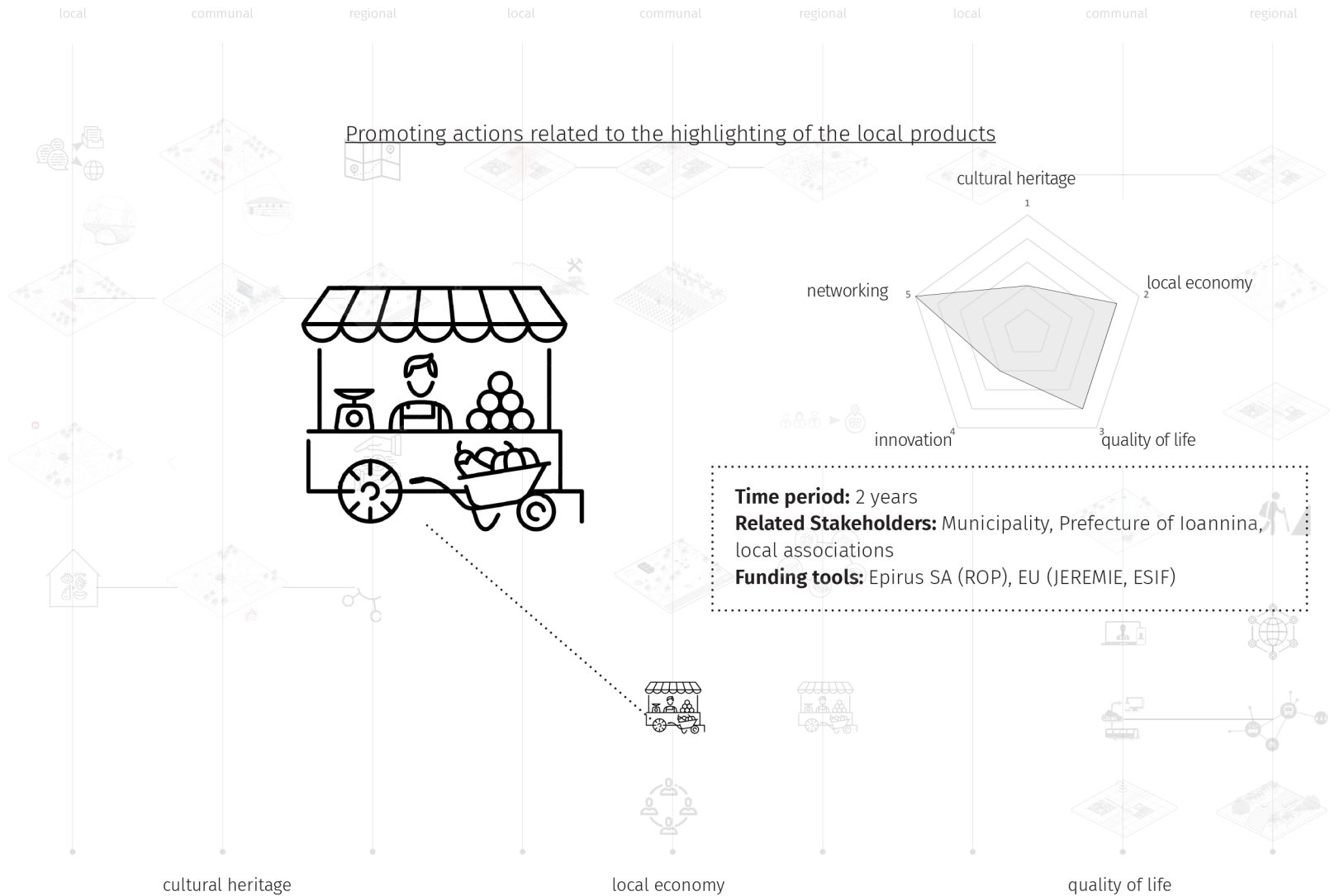
example



proposed interventions with less spatial impact

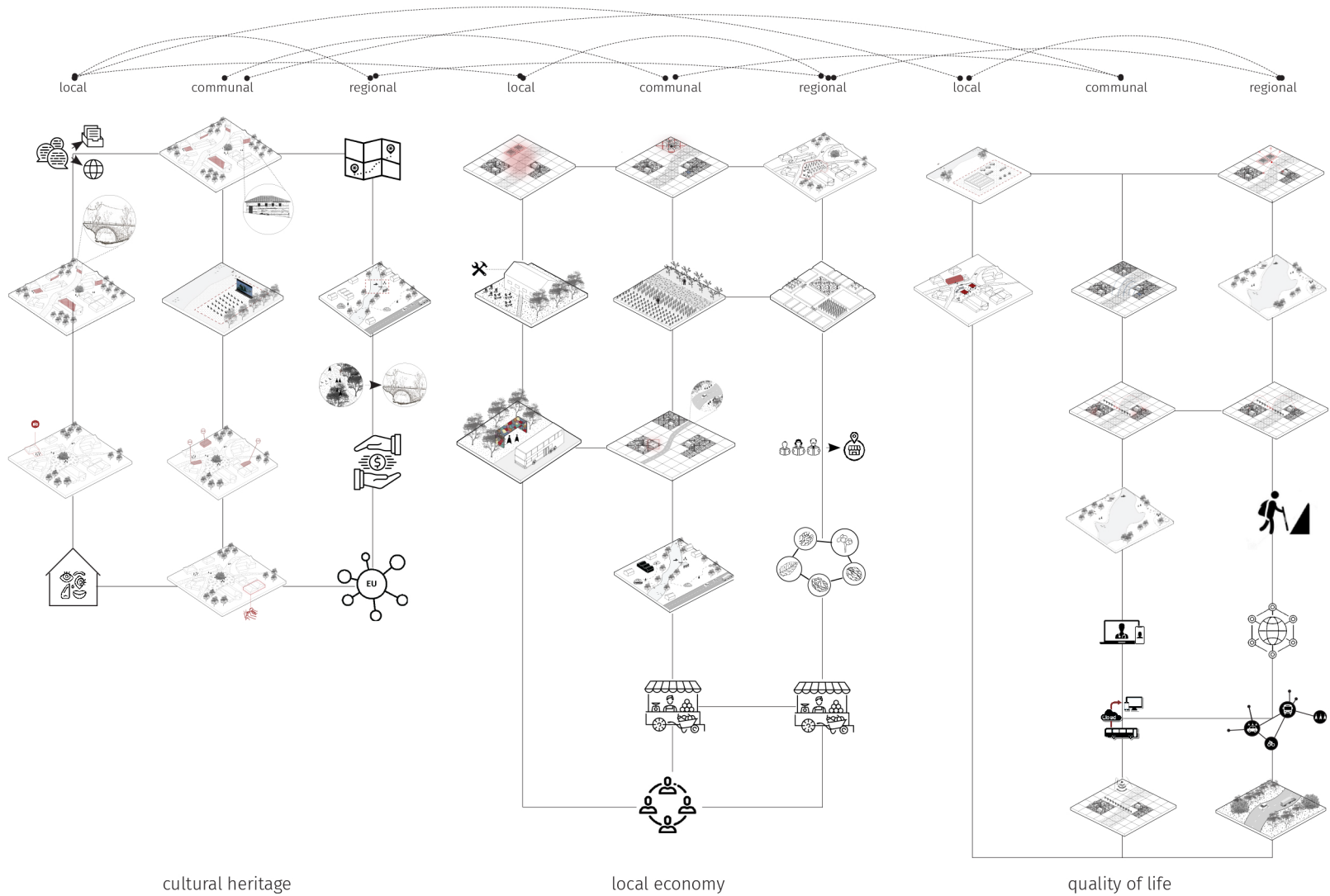


proposed interventions with less spatial impact; example



interaction between interventions from different scales

goals and interventions can expand and increase into more complex interventions, depending on the local specific needs

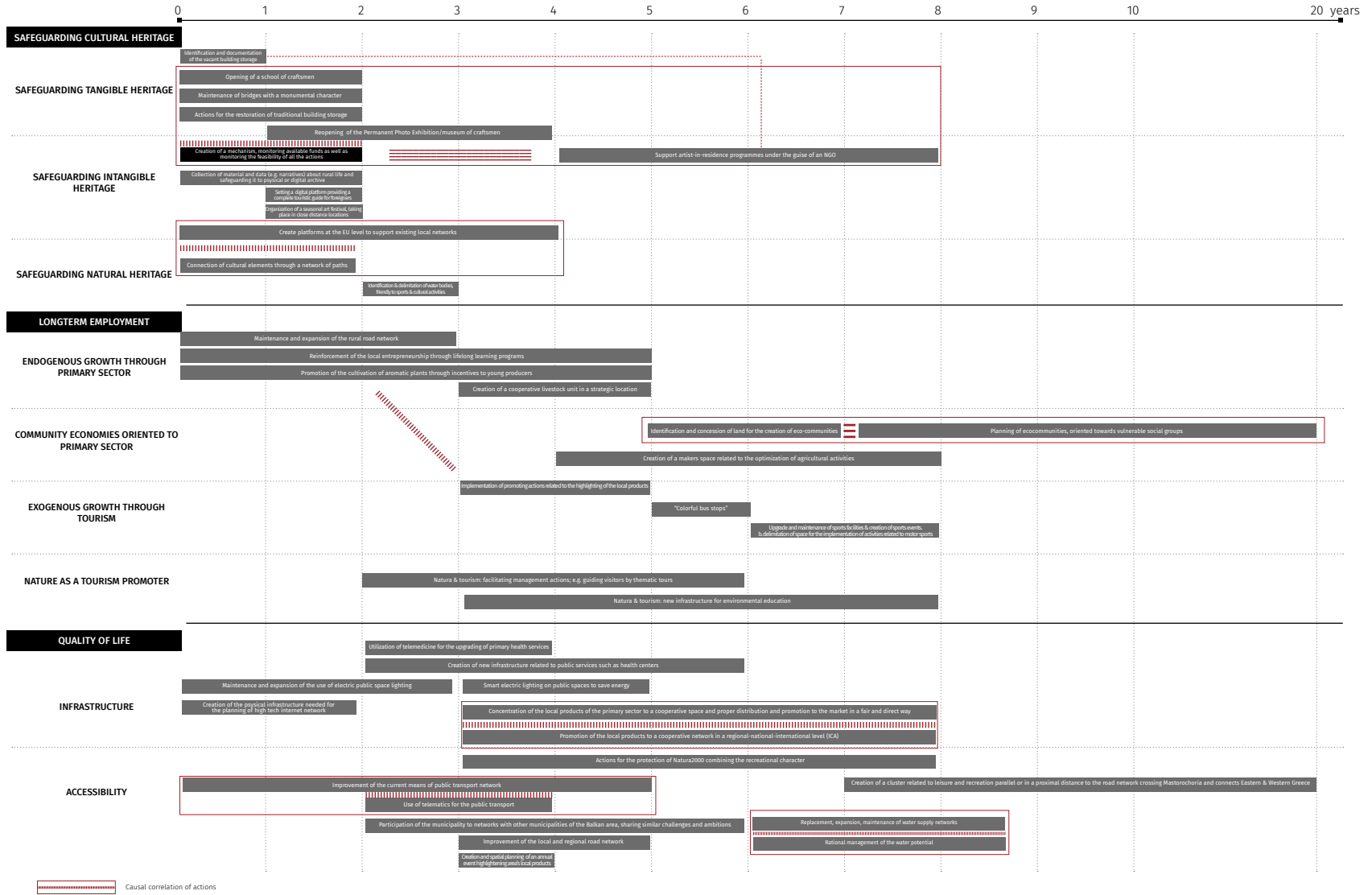


phasing scheme

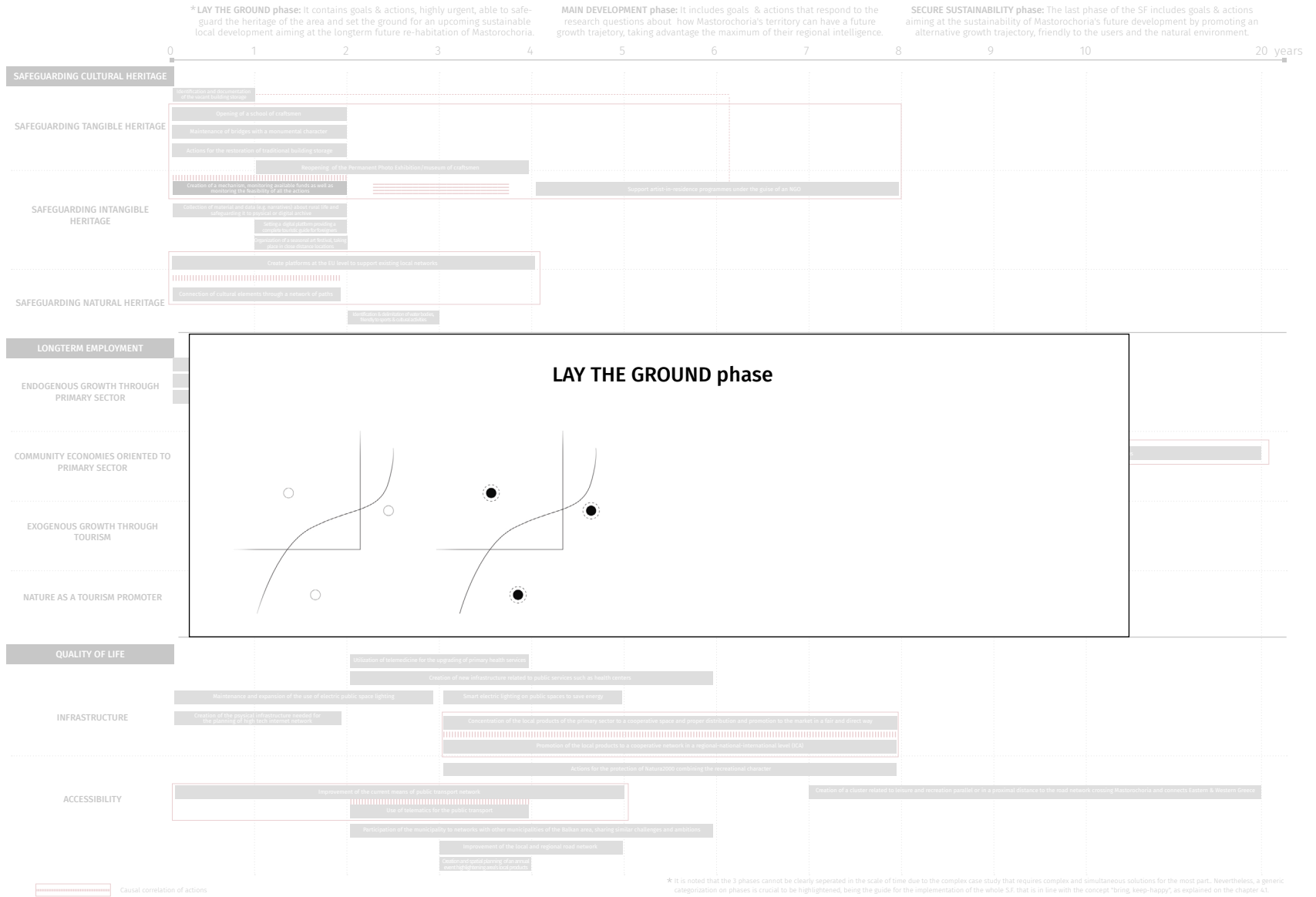
**\* LAY THE GROUND phase:** It contains goals & actions, highly urgent, able to safeguard the heritage of the area and set the ground for an upcoming sustainable local development aiming at the longterm future re-habitation of Mastrochoria.

**MAIN DEVELOPMENT phase:** It includes goals & actions that respond to the research questions about how Mastrochoria's territory can have a future growth trajectory, taking advantage the maximum of their regional intelligence.

**SECURE SUSTAINABILITY phase:** The last phase of the SF includes goals & actions aiming at the sustainability of Mastrochoria's future development by promoting an alternative growth trajectory, friendly to the users and the natural environment.



temporal framework



temporal framework



temporal framework



conclusions



Regional Operation  
Program of Epirus region



Business Plan of  
Konitsa Municipality

**through** the Strategic framework  
for Mastorochochia

- generalized proposals,  
without taking into account  
the spatial attributes of  
different places



- weak role of the  
bottom-up initiatives



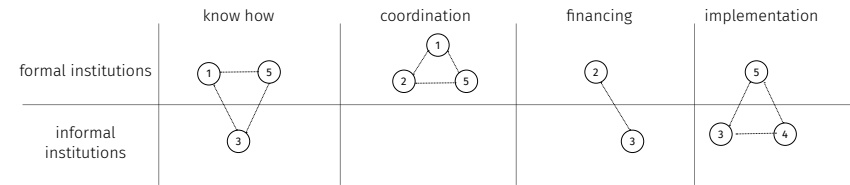
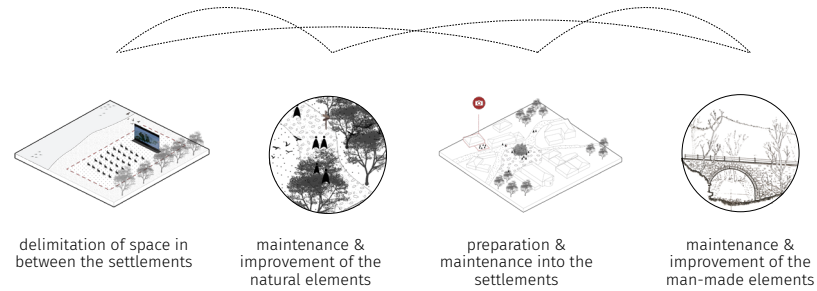
- lack of polycentricity



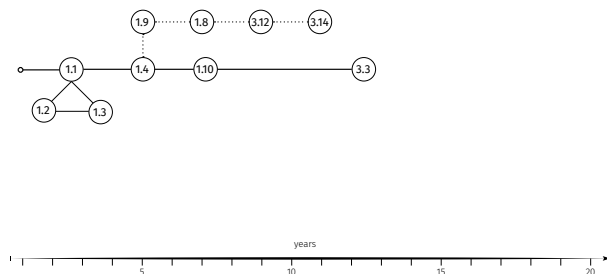
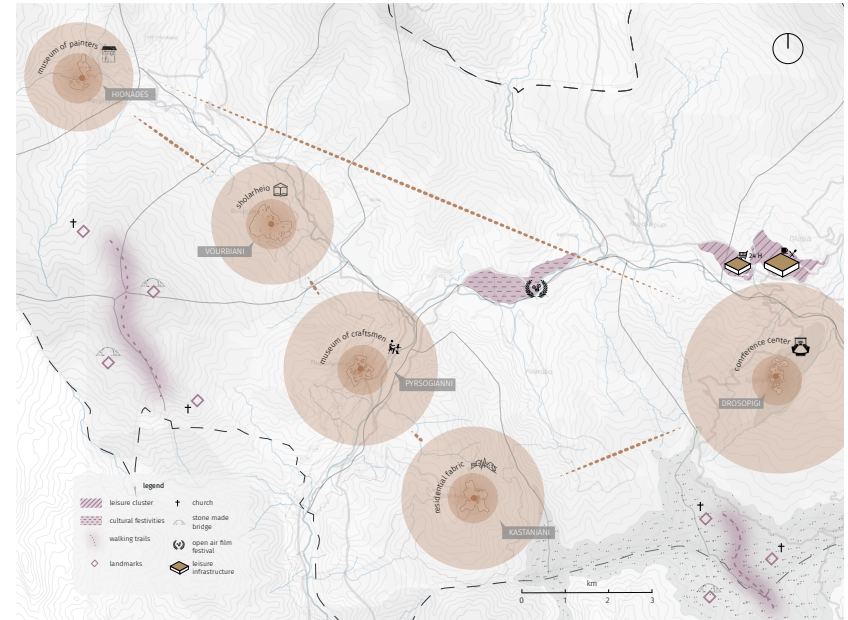
**TEST DESIGN IN  
MASTOROCHORIA SCALE**

cultural cluster

lay the ground phase



actors: Municipality of Konitsa (1), Epirus region (2), Local unions (3), Private investors (4), University of Ioannina (5), EU (6)



*“Today, the settlement has an active fraternity that takes care of the retaining of the cultural heritage as well as it tries to solve structural issues that the village faces... However, the lack of essential support from the municipality prevents the actions of the fraternity.”*



cultural cluster

impression of the place



the residential fabric of Kastaniani



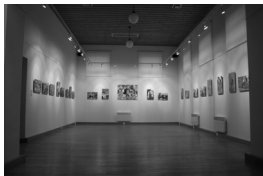
the principal school in Vourbiani



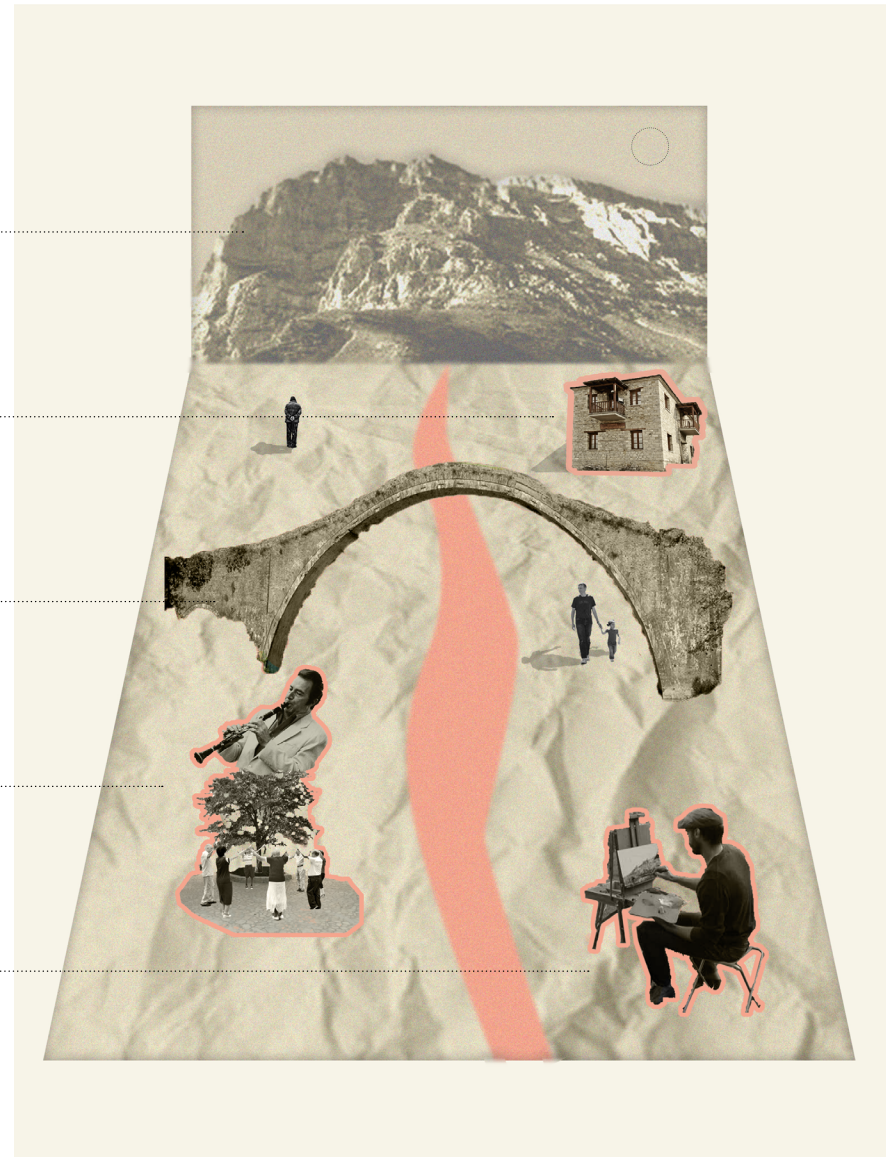
the museum of Craftsmen in Pysogianni



annual traditional music festivities in most villages

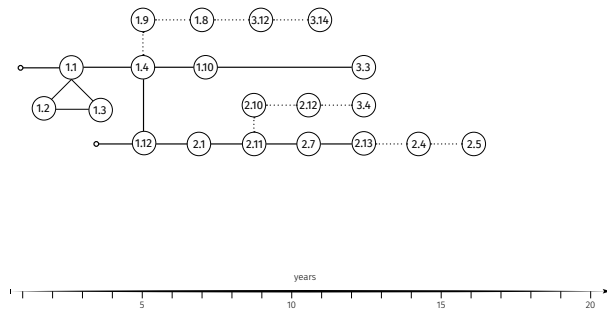
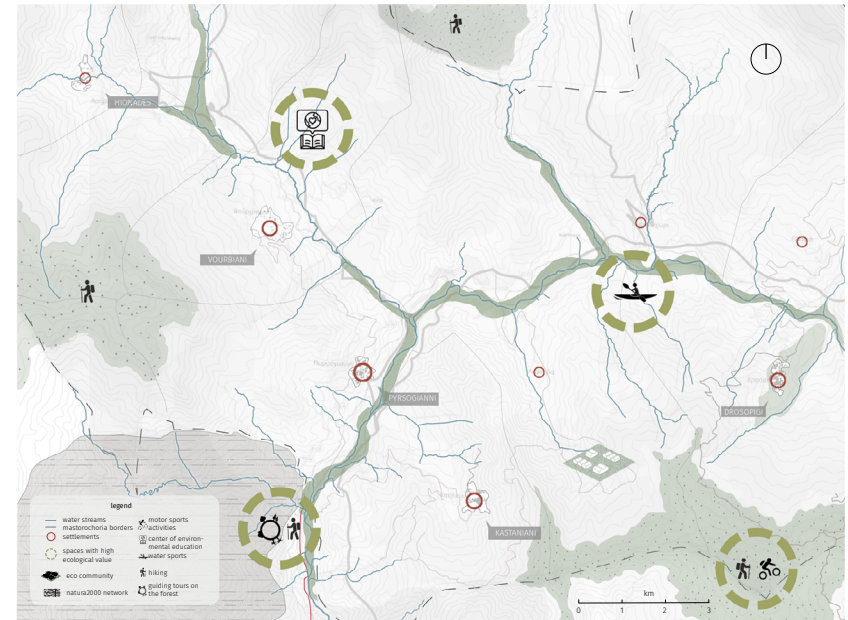
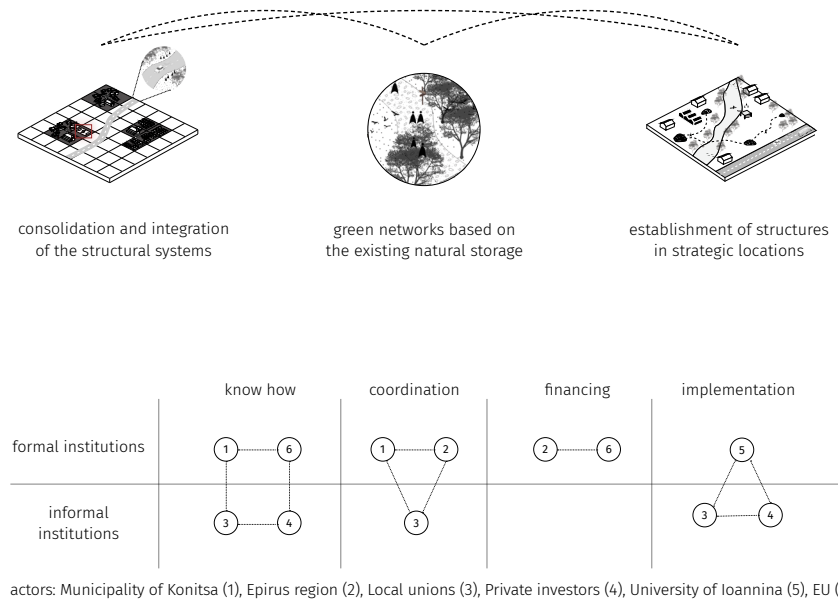


the conference center of Drosopigi  
the painters' museum in Hionades



ecology cluster

main development place



"The natural environment needs to be preserved and be promoted. Today, most cultivating land has been transformed to a wild forest due to the human absence throughout the last 30 years... It is important to adapt to the current conditions and take advantage of it through sustainable and ecologically friendly solutions."



ecology cluster

impression of the place



livestock & agricultural activities



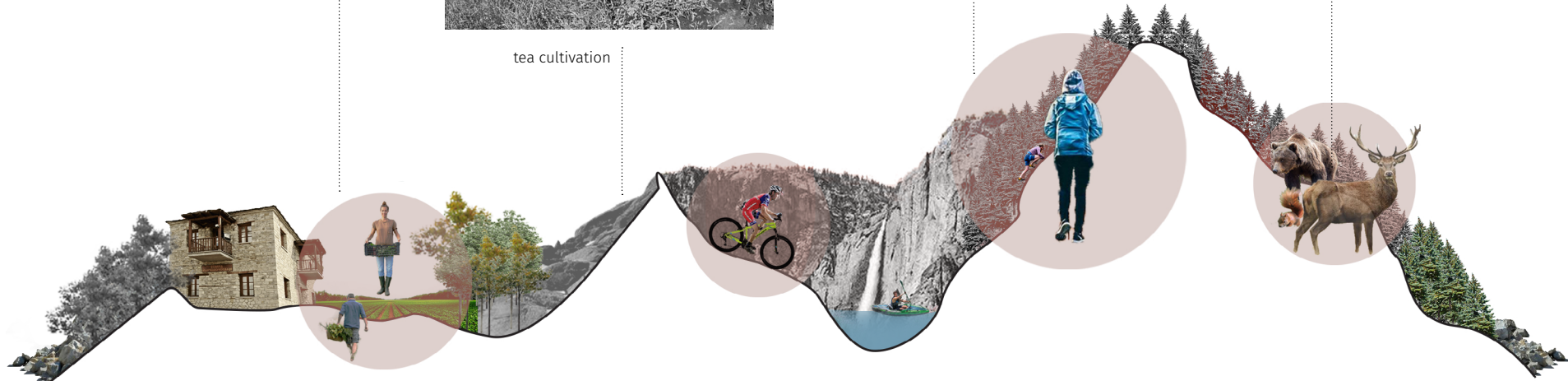
tea cultivation

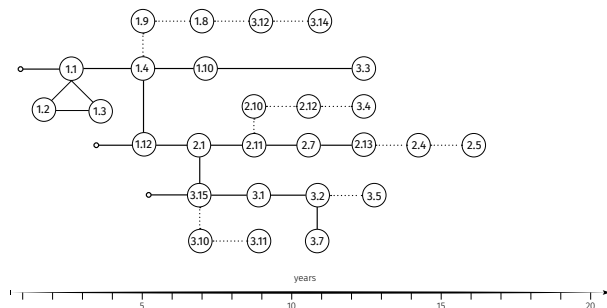
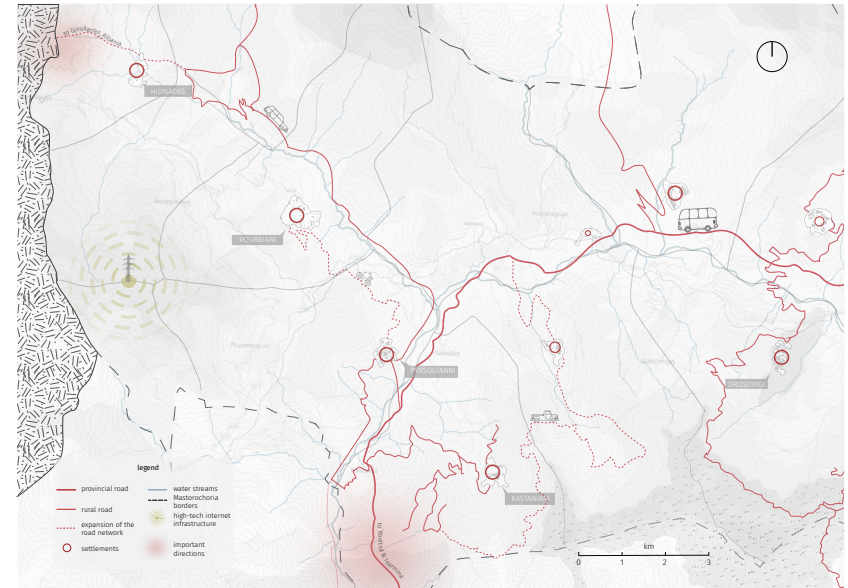
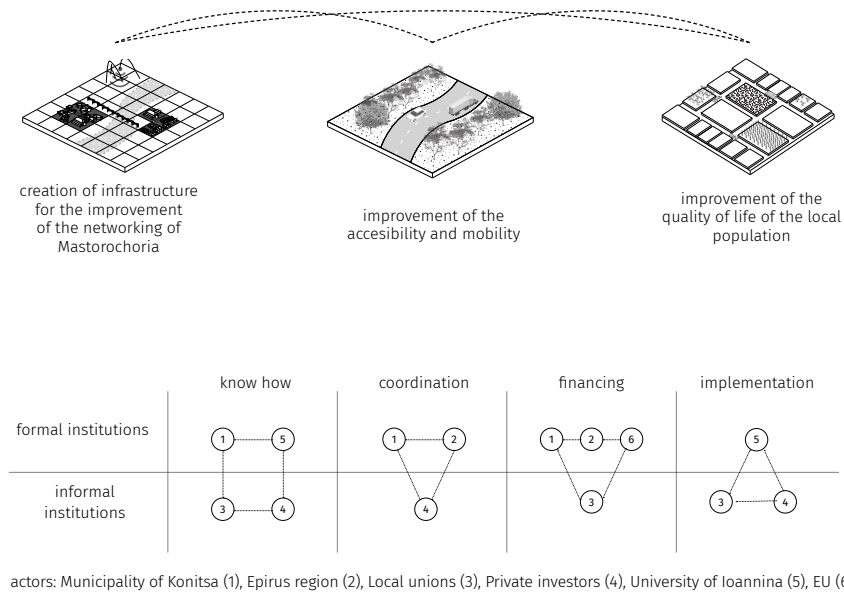


water sport activities



walking trails





"Since our villages are located in such an isolated and remote place of Greece, why not try to be as self-sufficient as possible?... by setting a collective wifi network based on the top of Tamburi mountain, we can satisfy our needs for internet without paying any bills to private companies and creating a friendly spot for mountaineers to immigrate and work in Mastorochochia"

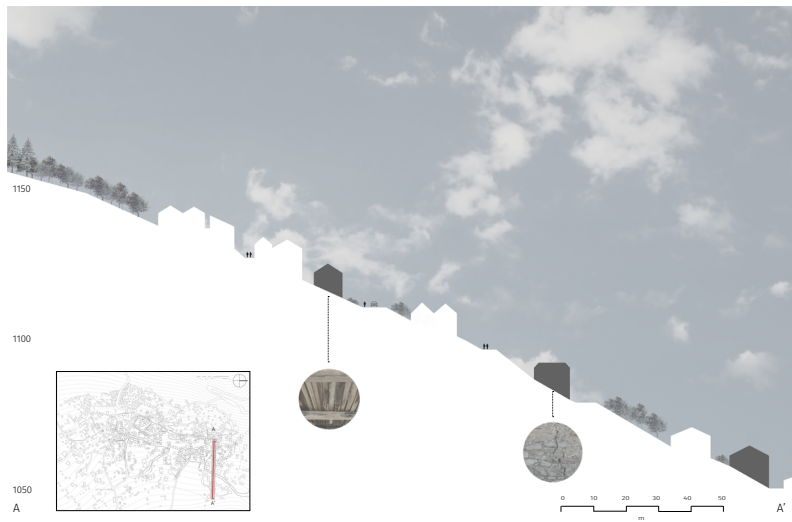
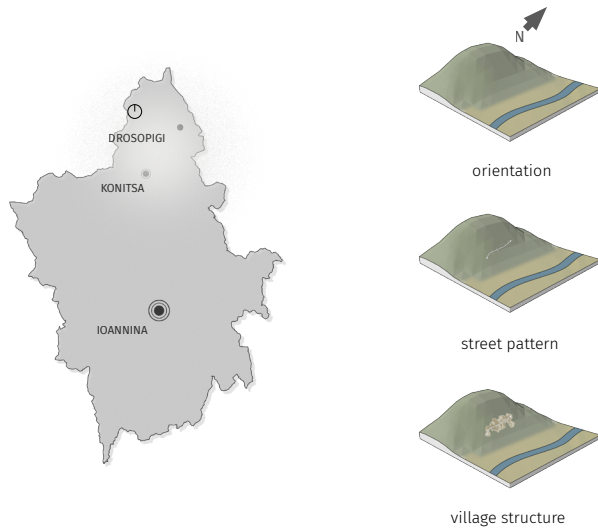


infrastructure cluster

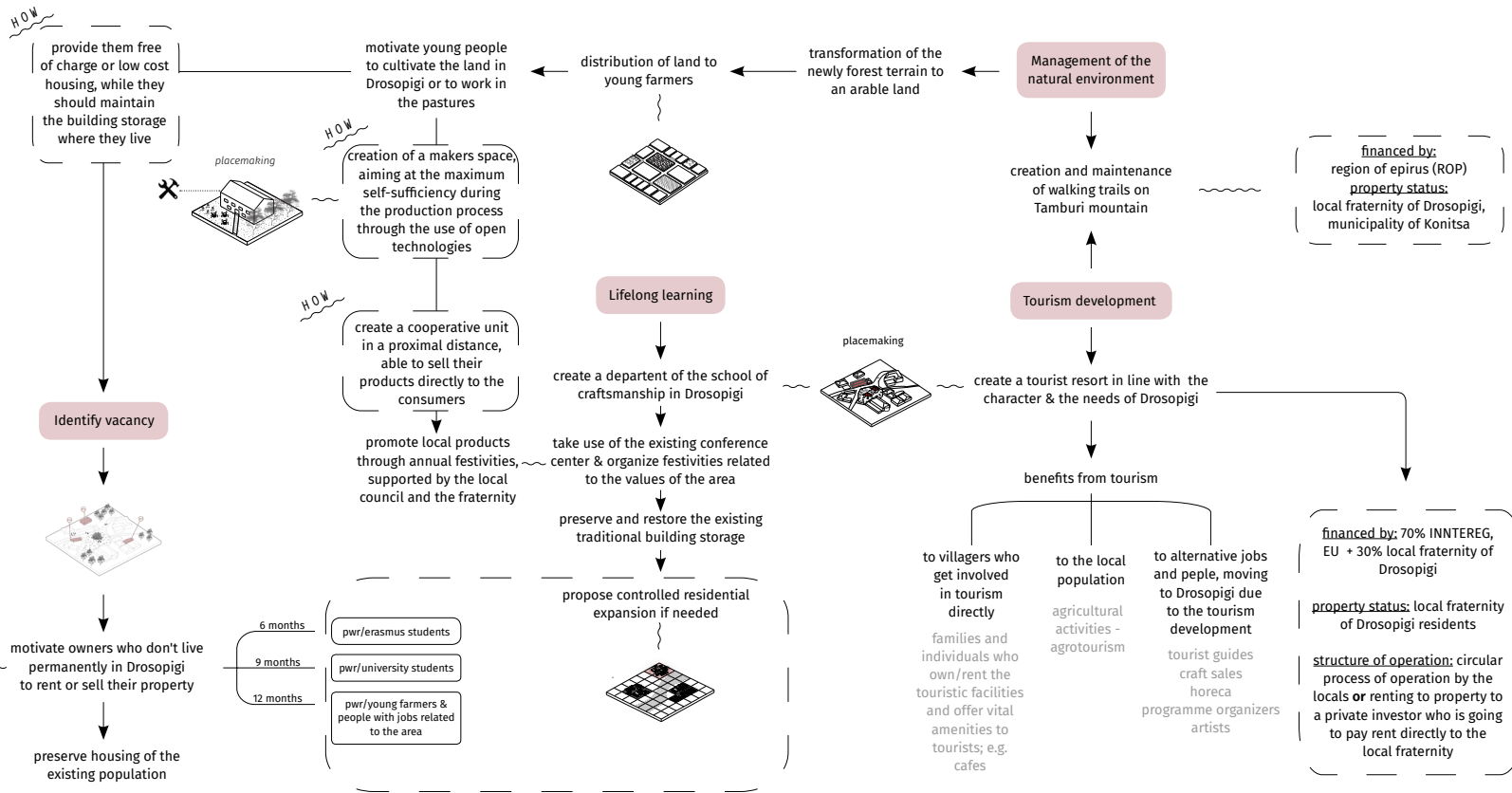
impression of the place



**TEST DESIGN IN A  
COMMUNITY SCALE**



operability

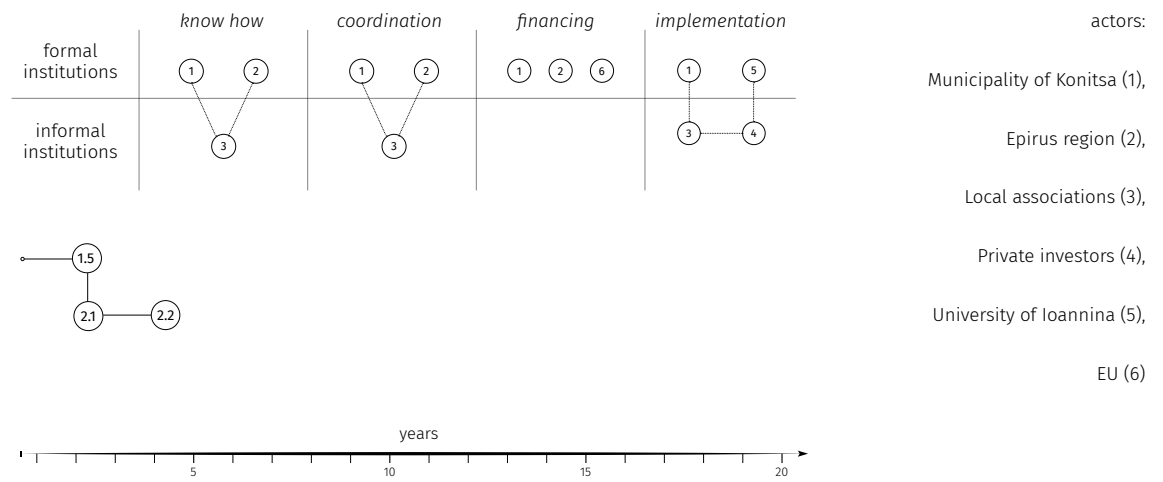
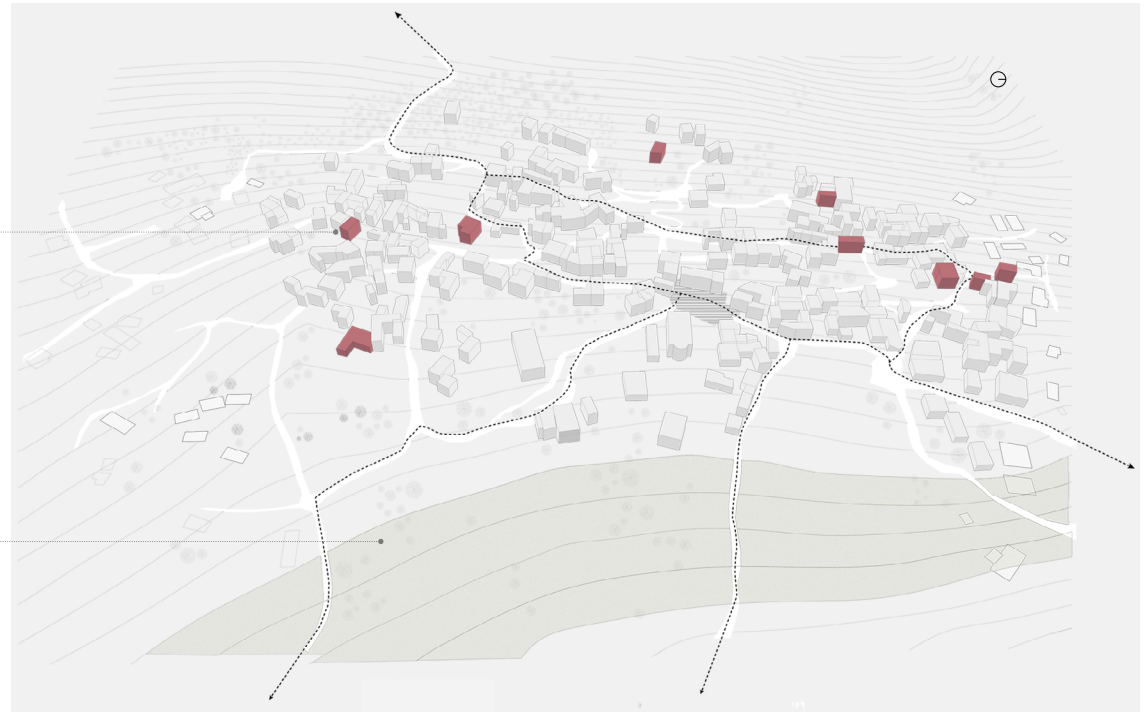


\*pwr= people working remotely

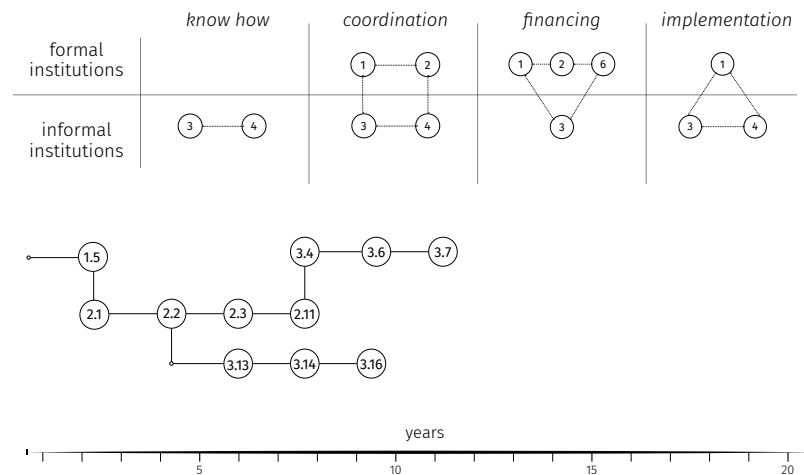
phase 1

identify vacancy

prepare newly forest land to make it arable

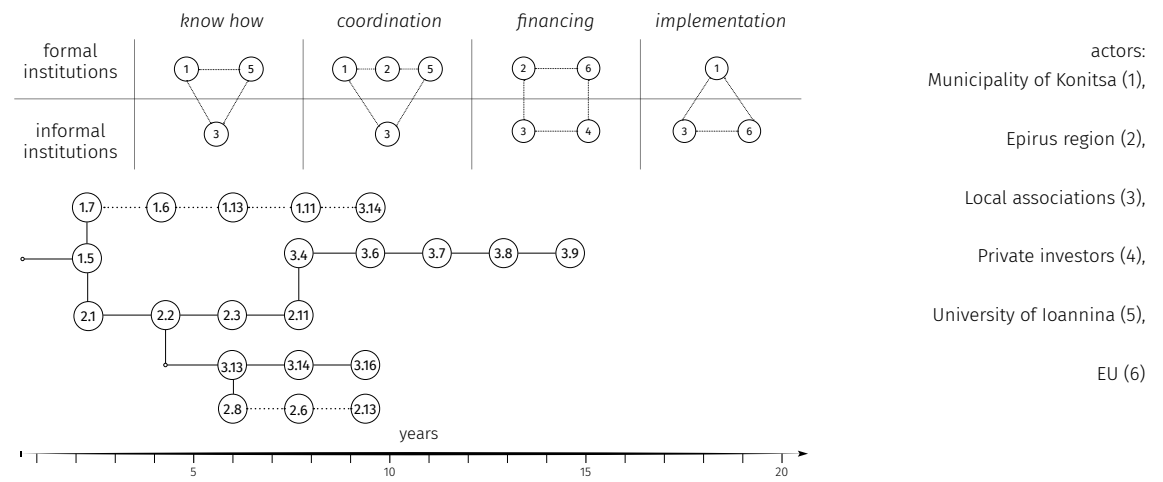


phase 2

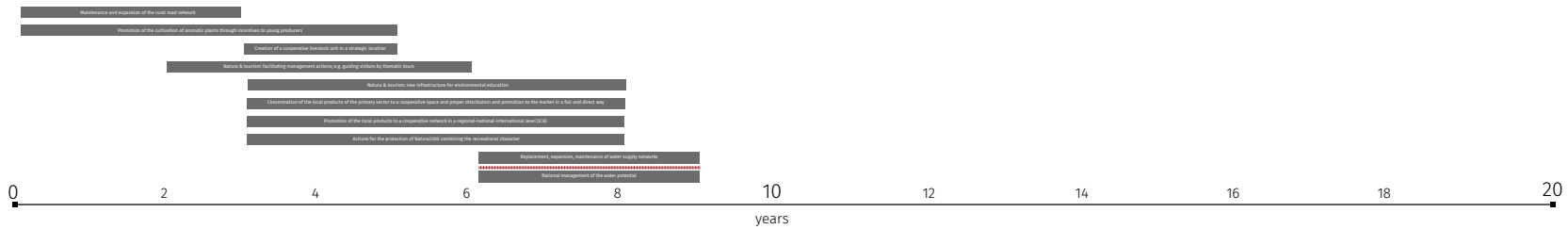
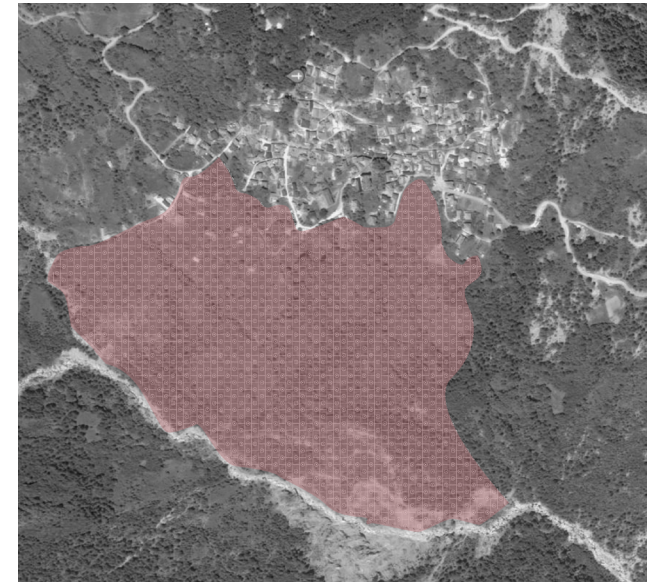
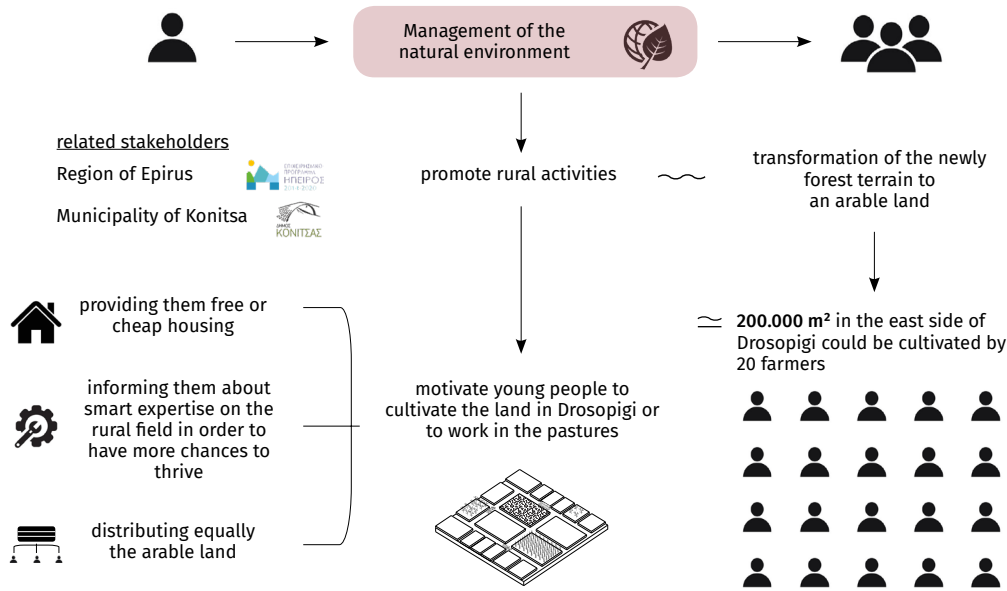
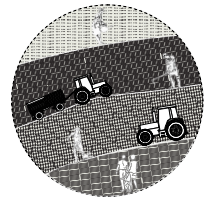


- actors:
- Municipality of Konitsa (1),
  - Epirus region (2),
  - Local associations (3),
  - Private investors (4),
  - University of Ioannina (5),
  - EU (6)

phase 3



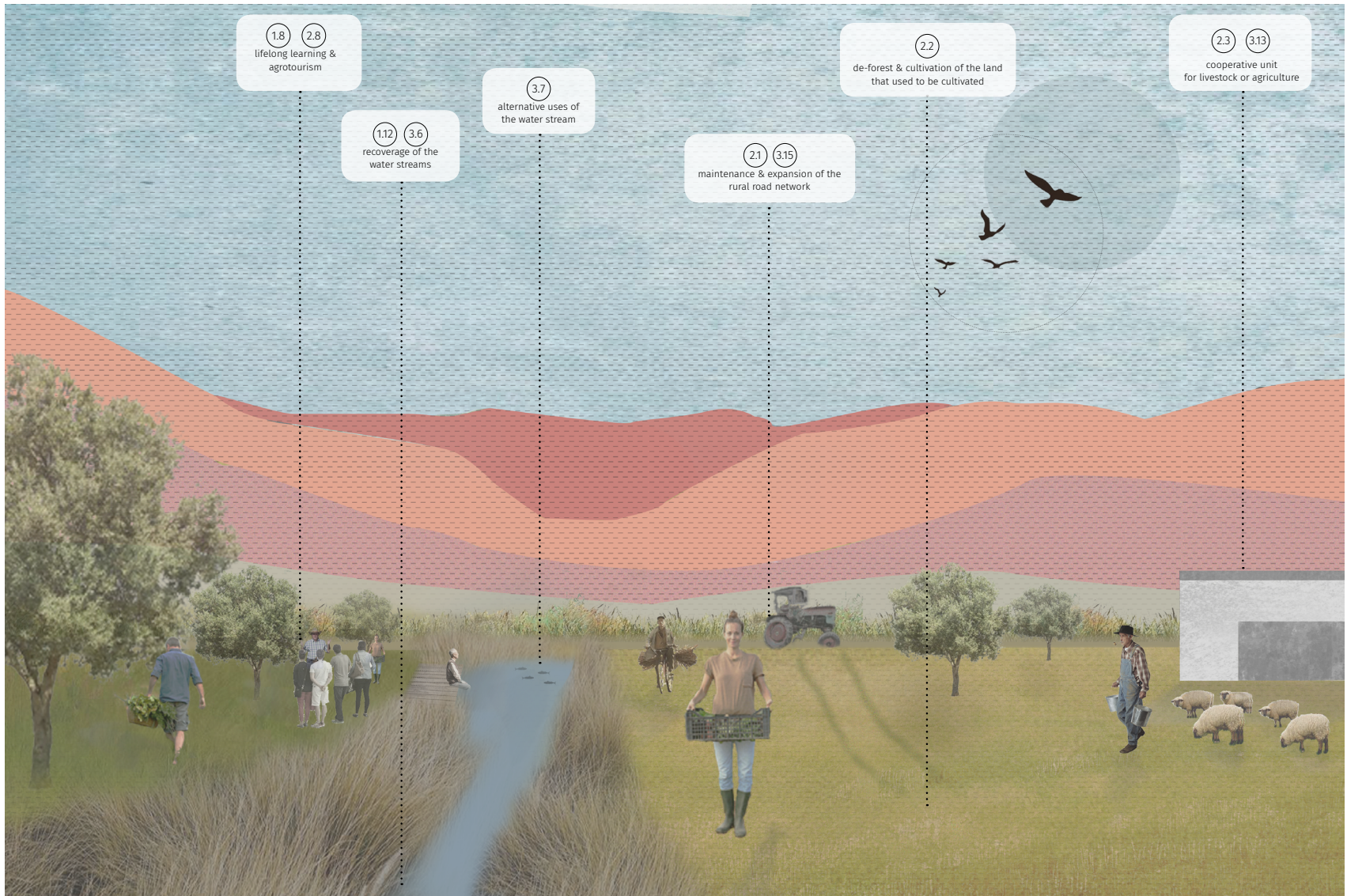
promotion of agriculture and agrotourism in the eastern edge of Drosopigi



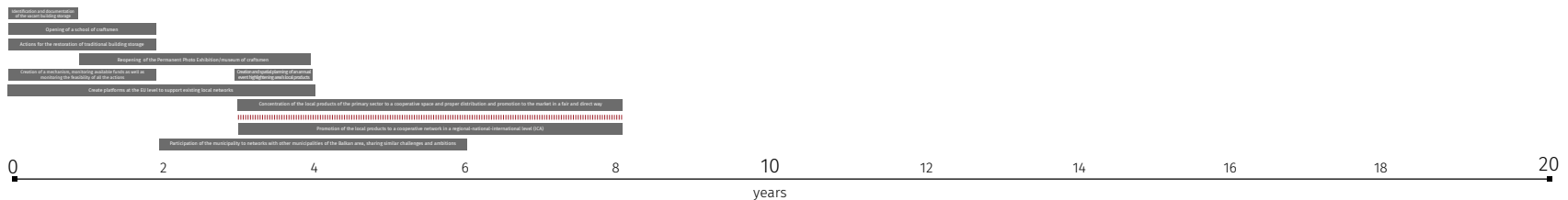
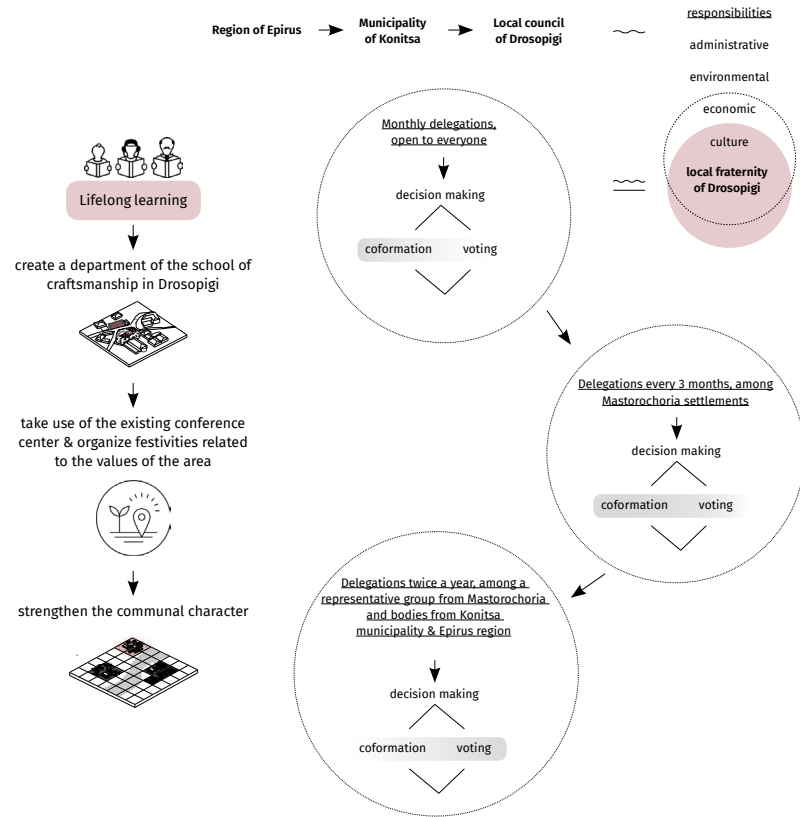
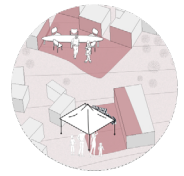
eastern edge of Drosopigi - before



eastern edge of Drosopigi - after



promotion of communal, cultural and touristic activities in the central square



central square Drosopigi - before



central square Drosopigi - after

2.2 2.8  
promotion of  
local products

1.10  
optimal use of  
the public space

2.8  
frequent delegations of  
the local population

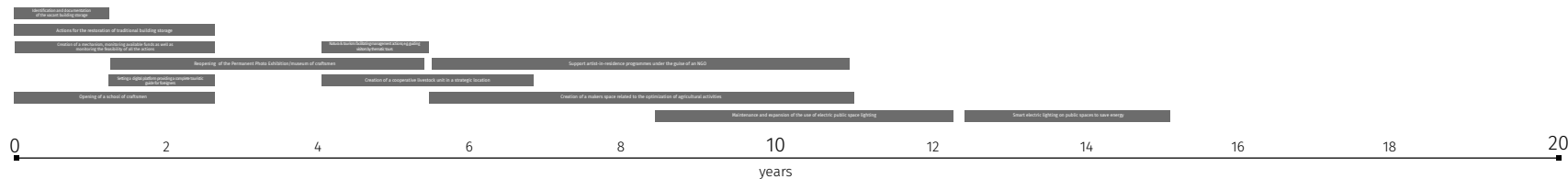
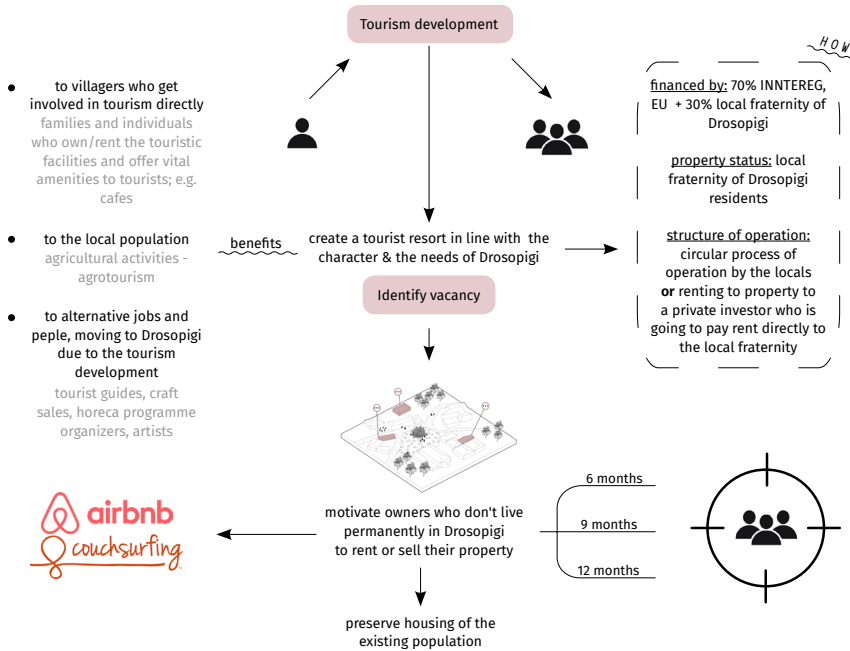
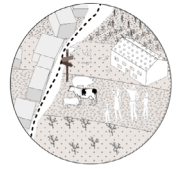
2.8 3.13  
operation of a cafe/restaurant  
throughout the year

3.2  
communal buildings'  
maintenance & renovation

2.13 3.16  
organization of  
annual festivities



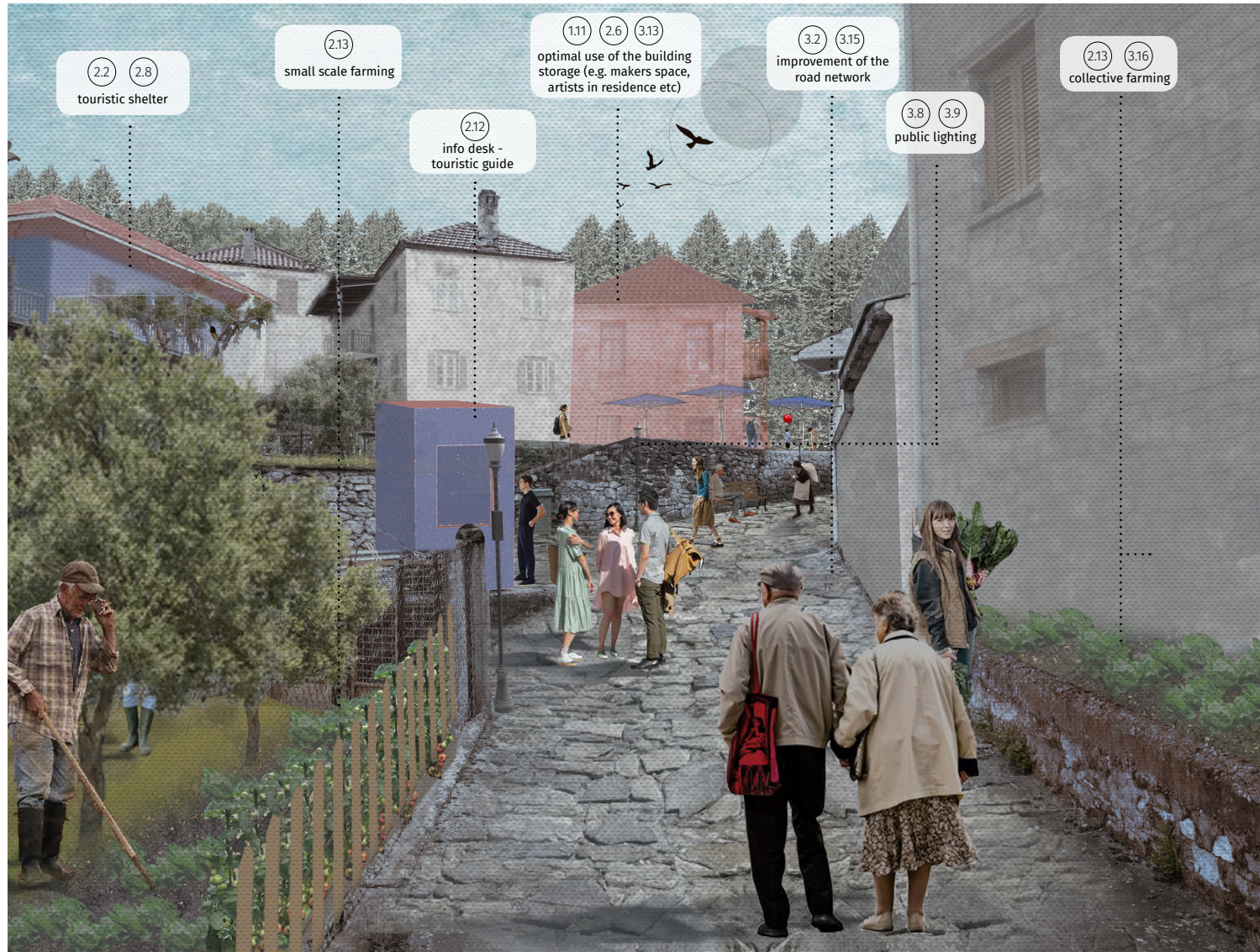
urban fabric's development



cobblestone alley - before



cobblestone alley - after

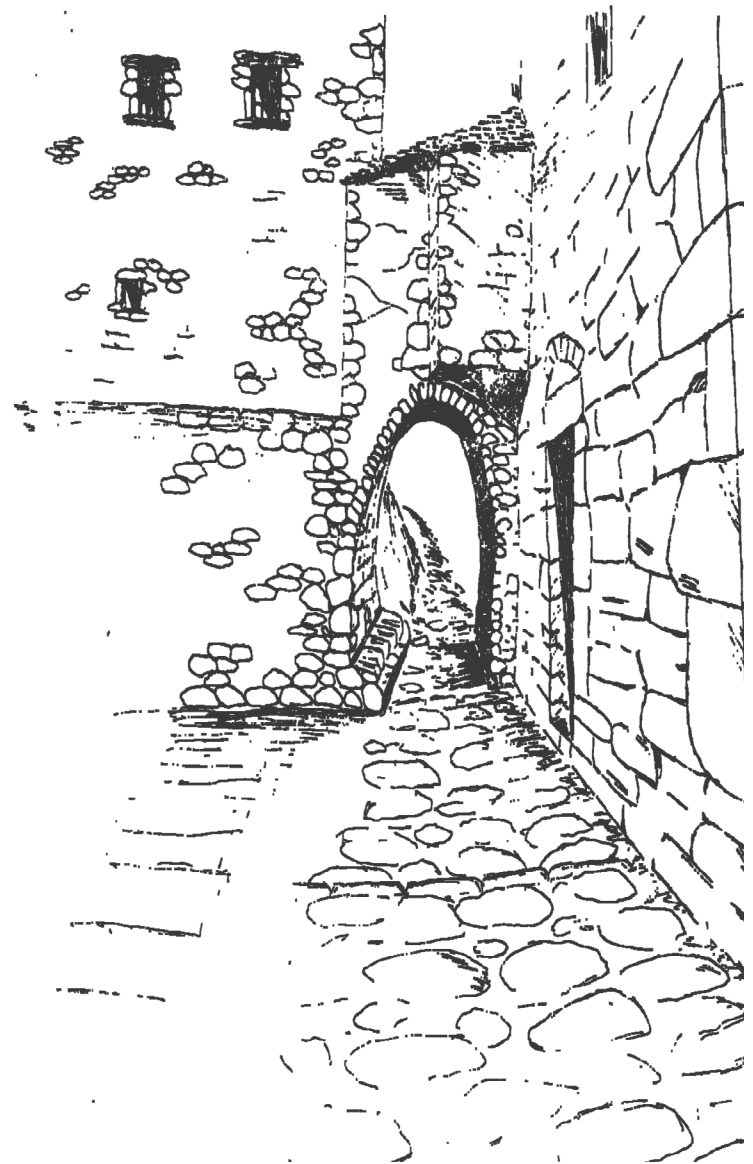


### design conclusions

- use of the natural environment, respecting the rich biodiversity
- need for small scale constructions
- actions in a local scale have a more urgent and short-term character
- continuity & lifelong learning related to craftsmanship
- use of local elements for the constructions to the extent possible
- avoid imitation

### personal thoughts

- a vicious circle that needs to break
- declaration of Mastorochoia settlements as preserved by the state
- (agro)tourism can only be an additional part of the solution
- local human resources to the extent possible
- the unfair distribution of resources in a regional level

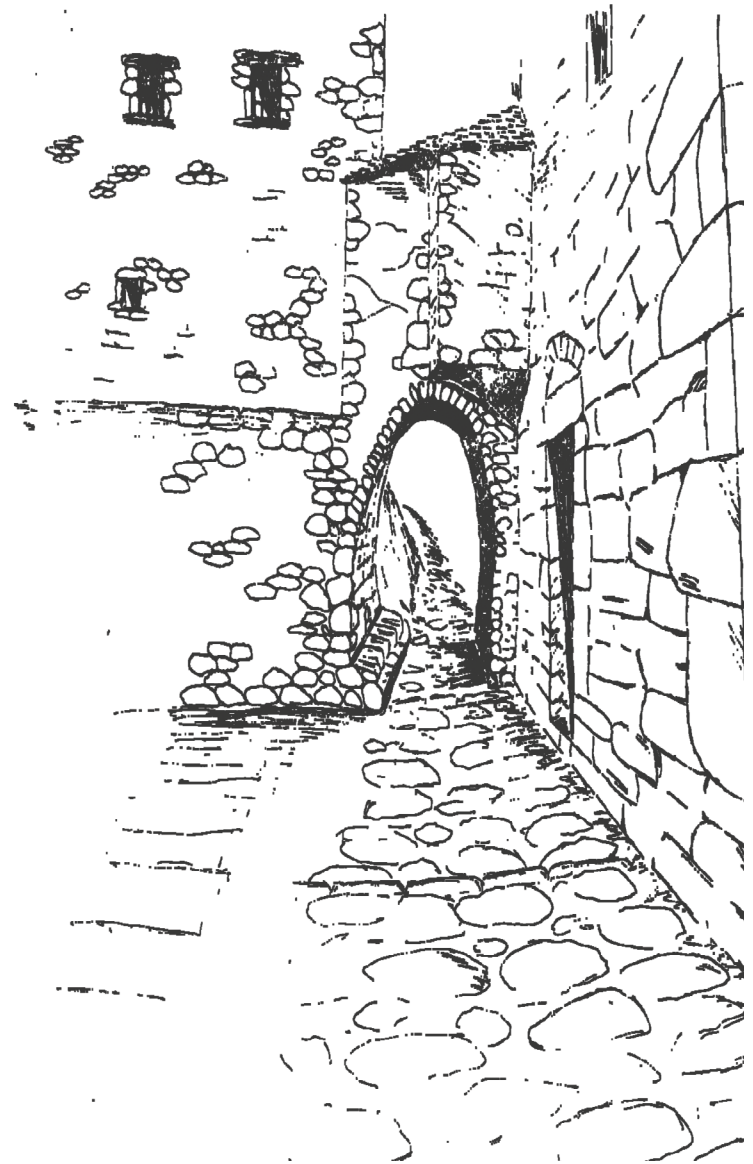


## design conclusions

- use of the natural environment, respecting the rich biodiversity
- need for small scale constructions
- actions in a local scale have a more urgent and short-term character
- continuity & lifelong learning related to craftsmanship
- use of local elements for the constructions to the extent possible
- avoid imitation

## personal thoughts

- a vicious circle that needs to break
- declaration of Mastorochochia settlements as preserved by the state
- (agro)tourism can only be an additional part of the solution
- local human resources to the extent possible
- the unfair distribution of resources in a regional level





# THE AGING LAND



[shorturl.at/ajD15](https://shorturl.at/ajD15)

