

Living in Transition

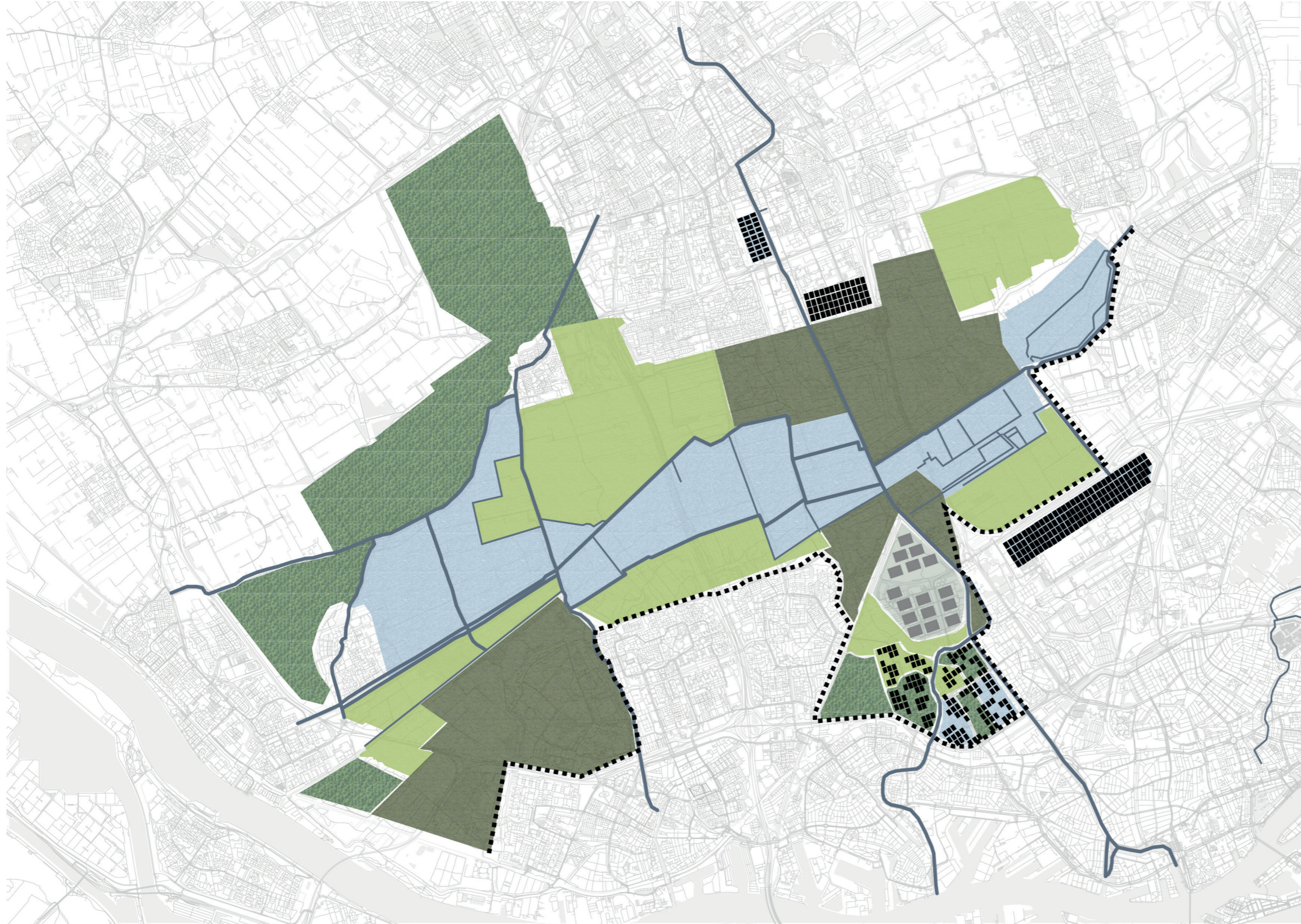
Transitional housing for safety, autonomy and social inclusion in the Spaanse Polder



social inclusion

“Social inclusion is presented as the process of improving the terms of participation in society for people who are disadvantaged on the basis of age, sex, disability, race, ethnicity, and economic and migration status.”

(United Nations, 2016)



Legend

- Boezem buffer
- Boezem
- New form of farming
- Production forrest
- Wetlands for birds and biodiversity
- Urbanisation

Figure 7
National Productive Park Delfland, group vision
Group work

1:10000

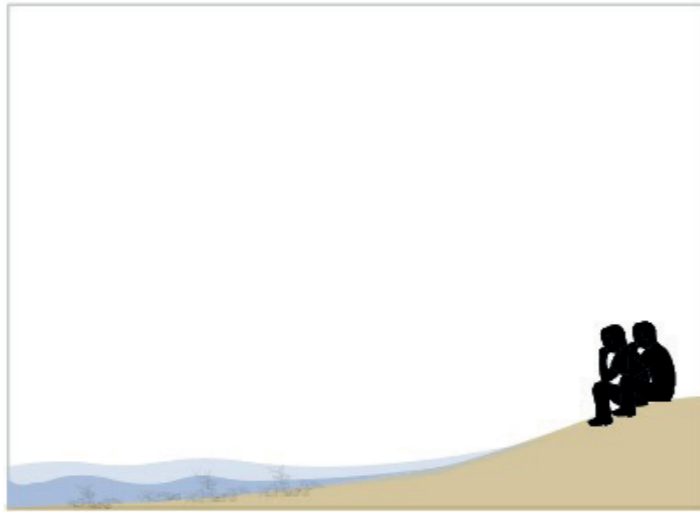


Legend

- Existing buildings
- New buildings
- Water
- Green areas
- Possible infrastructure
- Squares
- Infrastructure combined with green

Figure 16
Phase 5 of the development of the Spaanse Polder
Group work

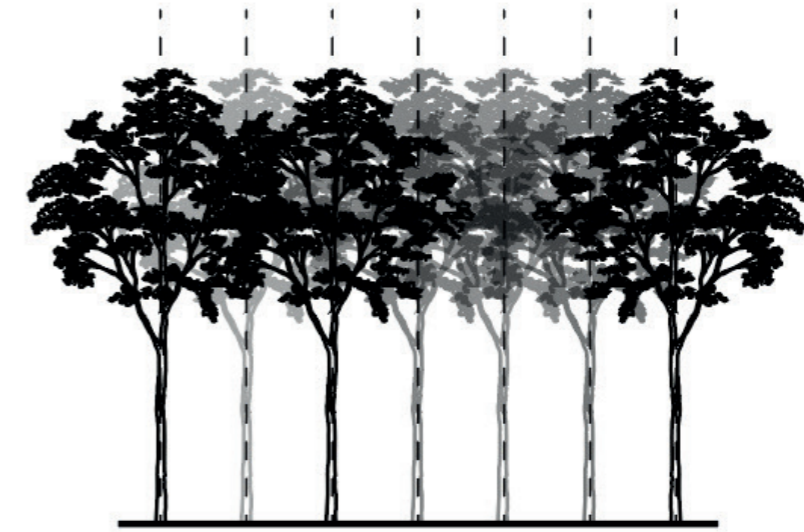
1:10000



Introducing water buffers



Increase of biodiversity



5 x 5 meter grid

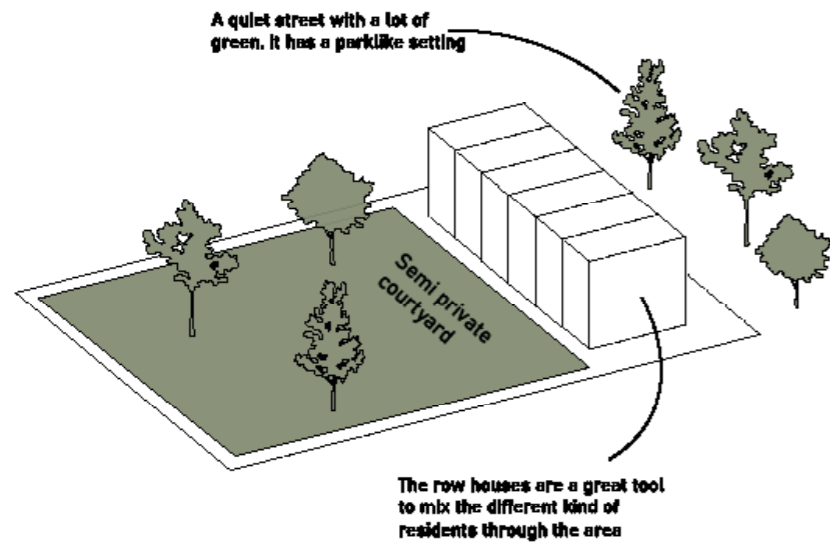
+25



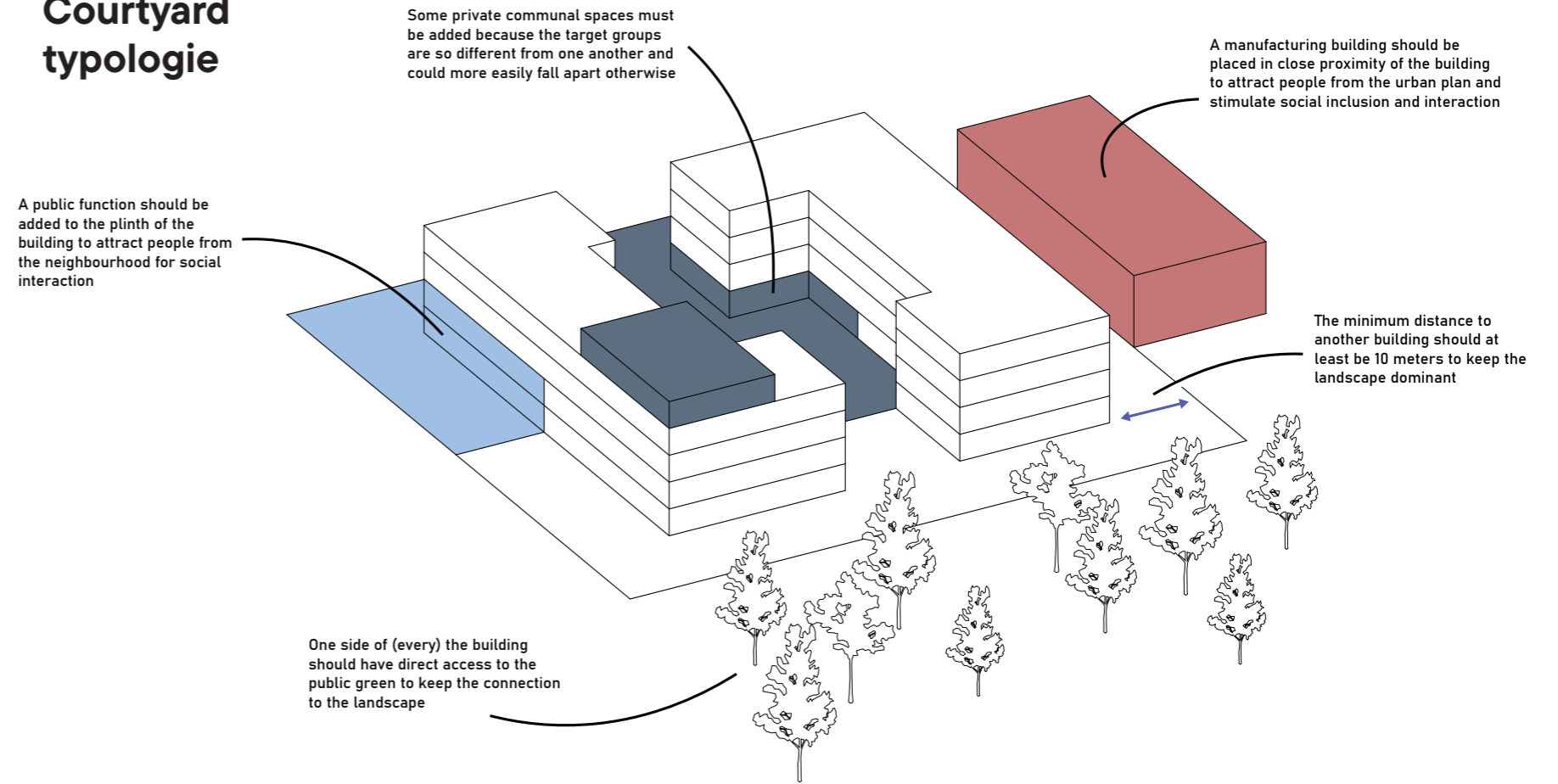
Height tree > Building height



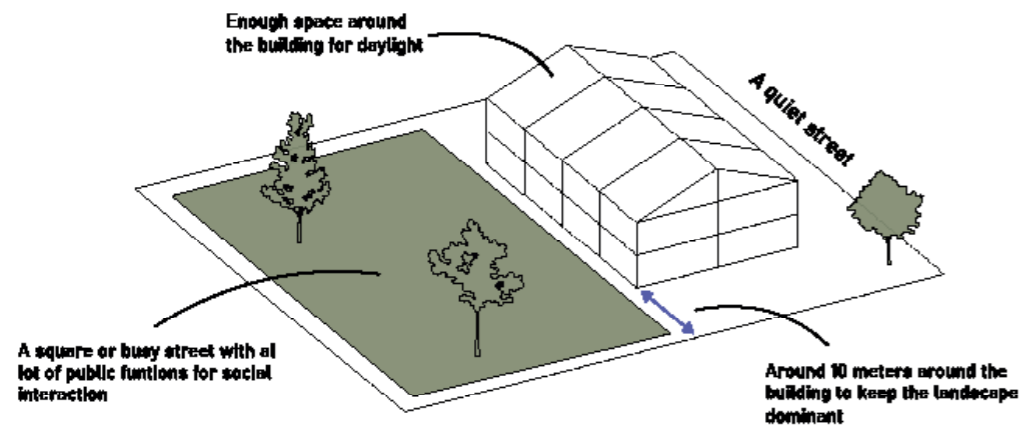
Row houses



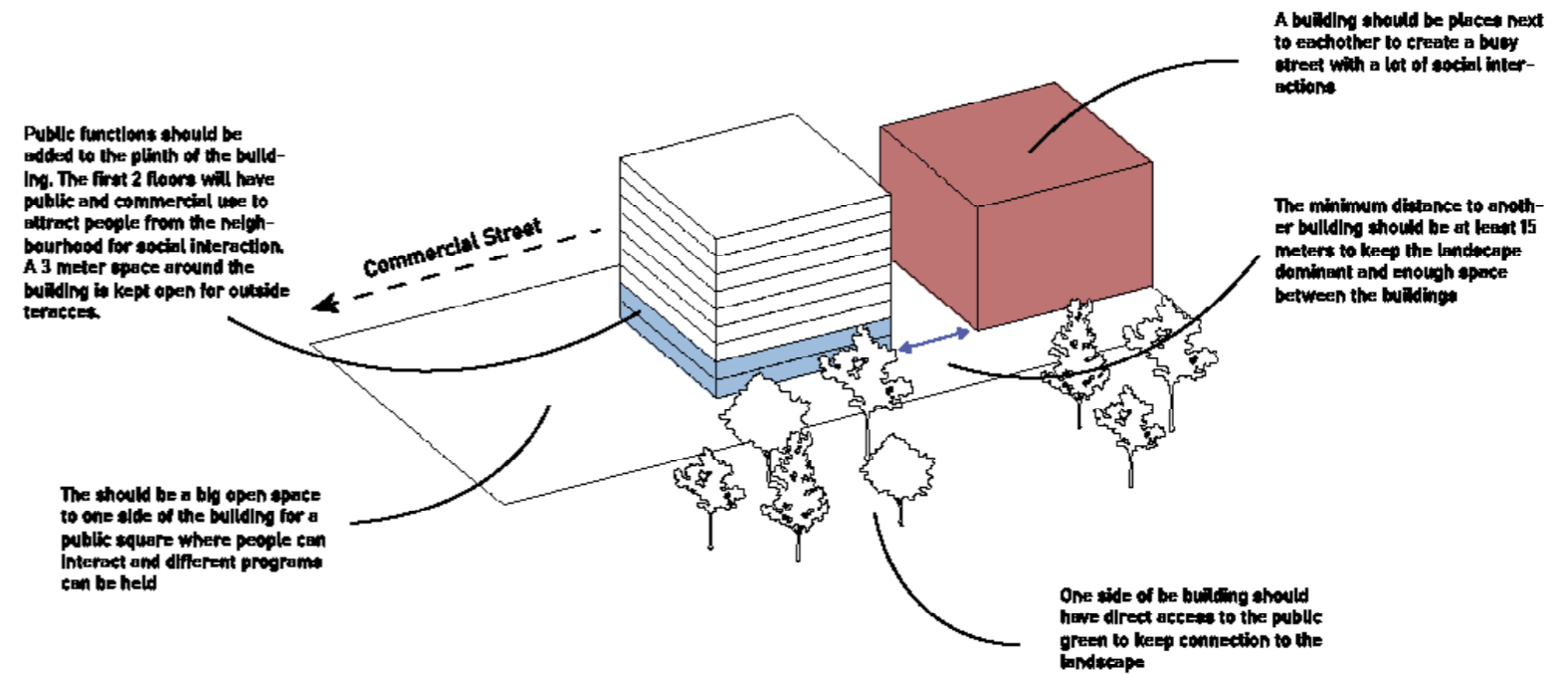
Courtyard typologie



Back-to-back houses

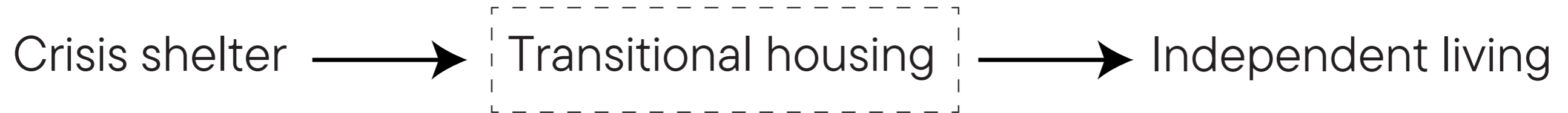


Apartment buildings

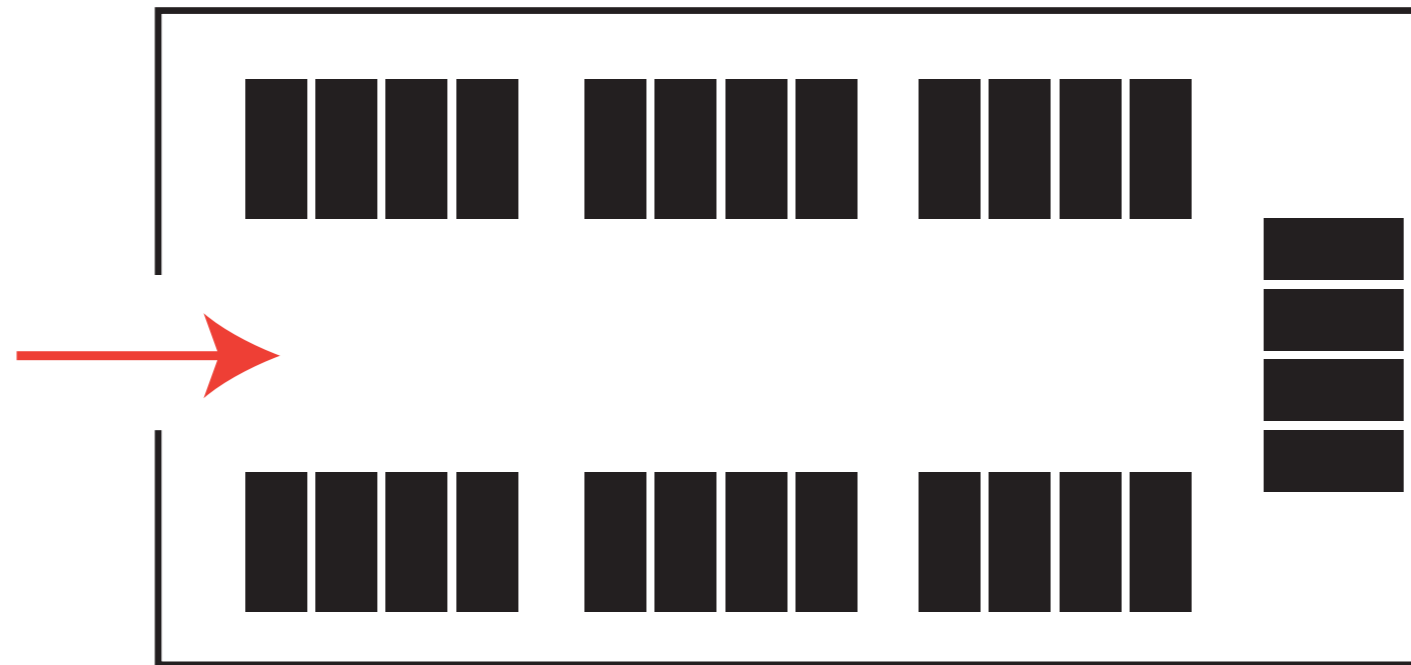


Personal inspiration and ambition

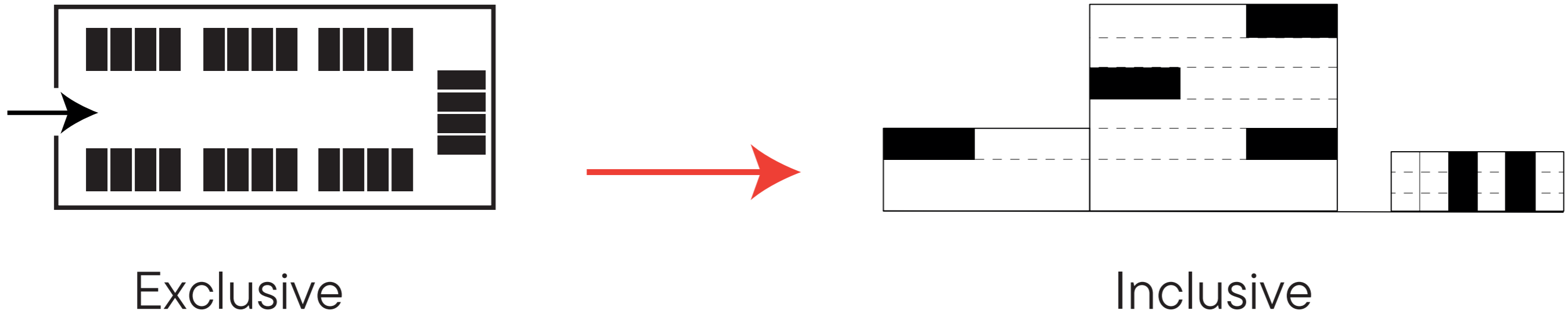
Transitional housing
as a spatial strategy
for social inclusion



Transitional housing is often treated as Institutional housing with hard thresholds.



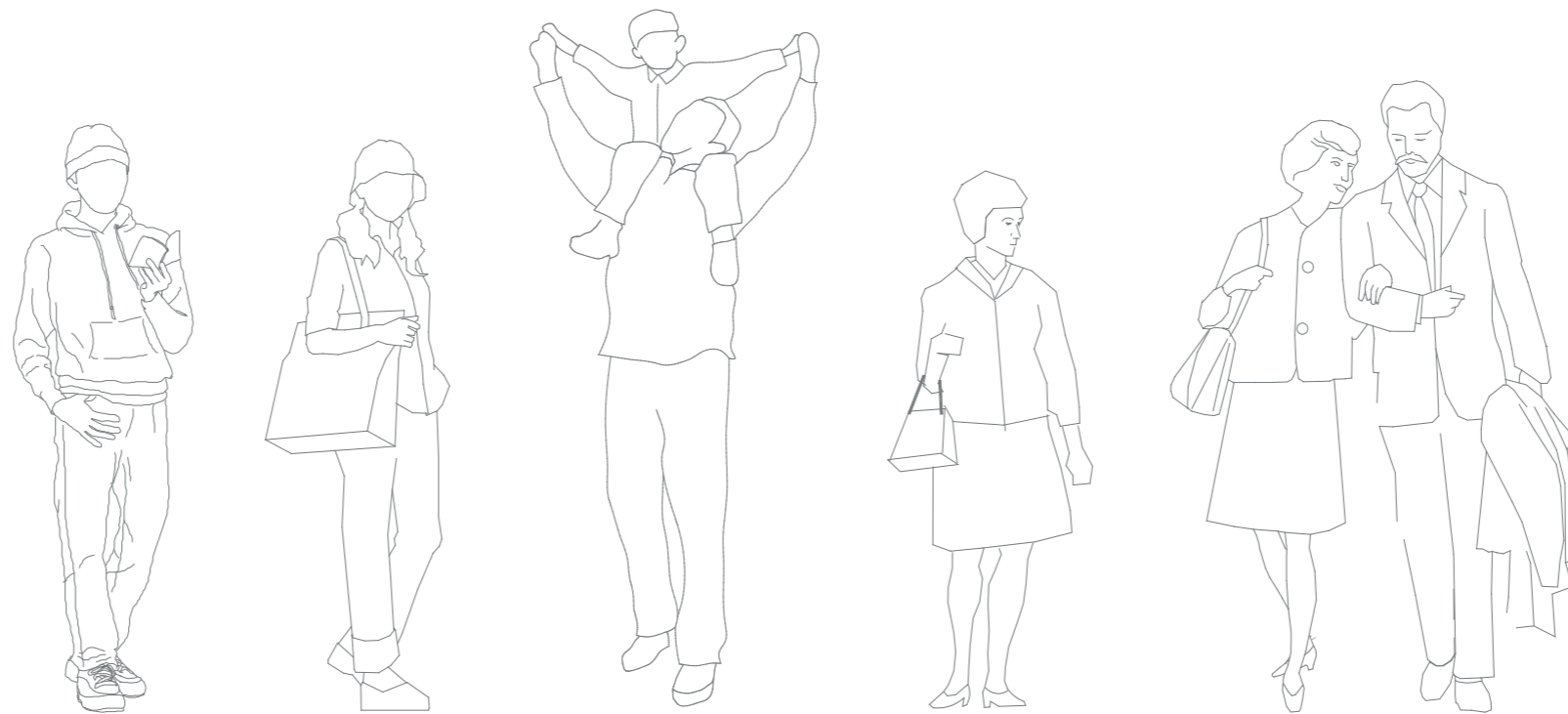
The Spaanse Polder transformation offers a unique opportunity for inclusive housing and emancipation.



Target groups

Student, people exiting crisis accomodation, 55+ residents.

safety, autonomy, social inclusion



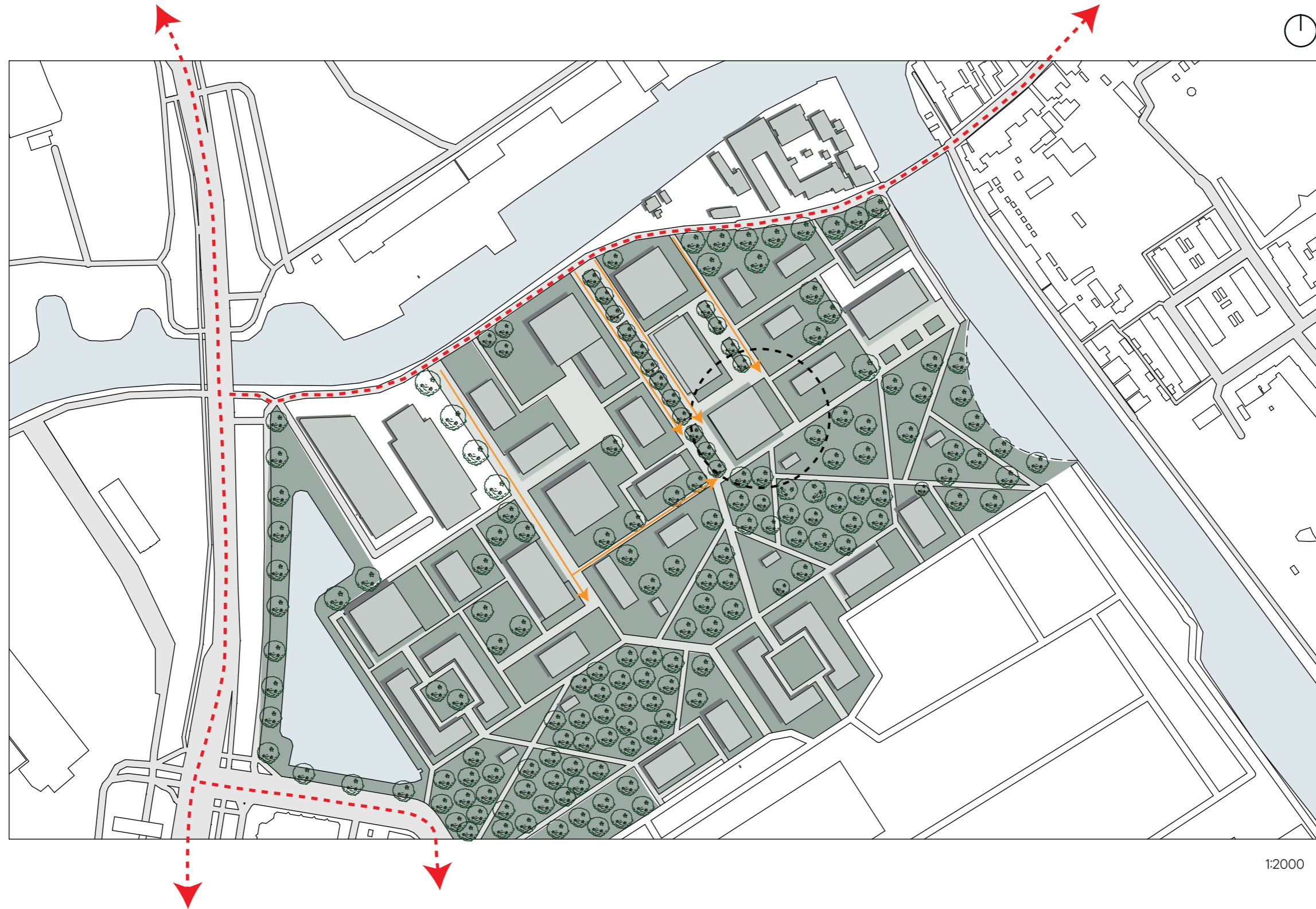
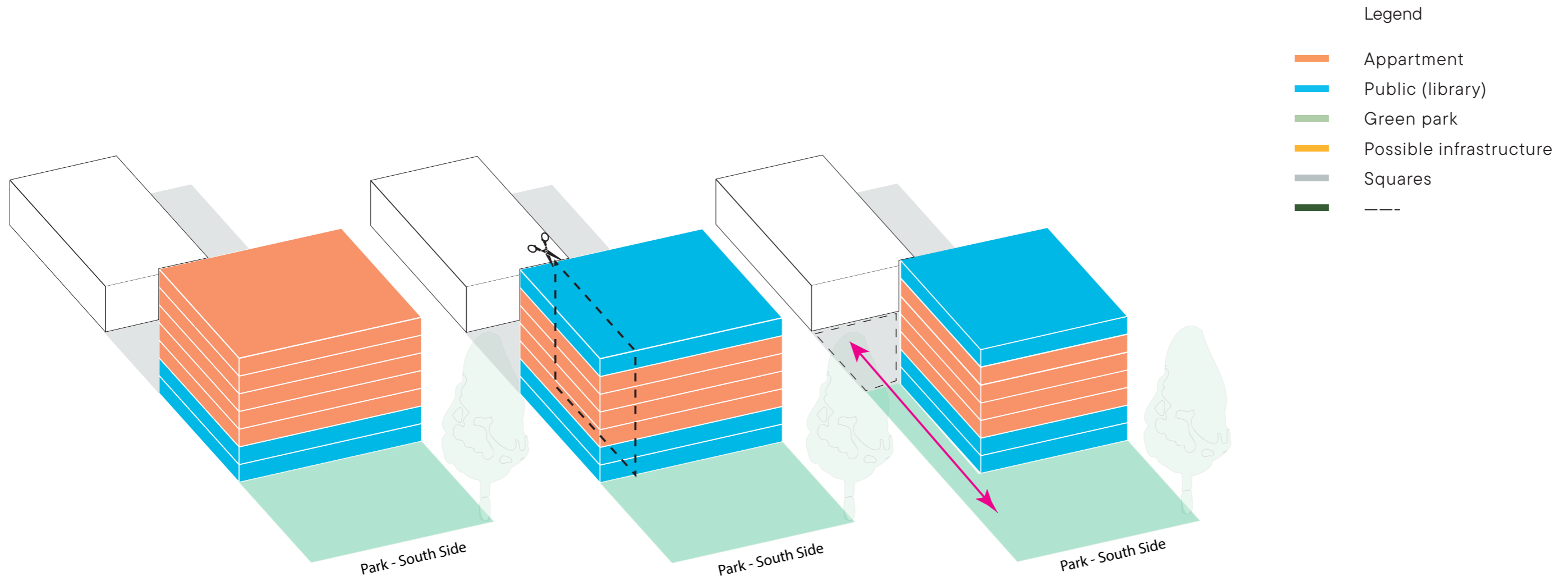


Figure 23
Master plan of phase 1 of the Spaanse Polder
Group work



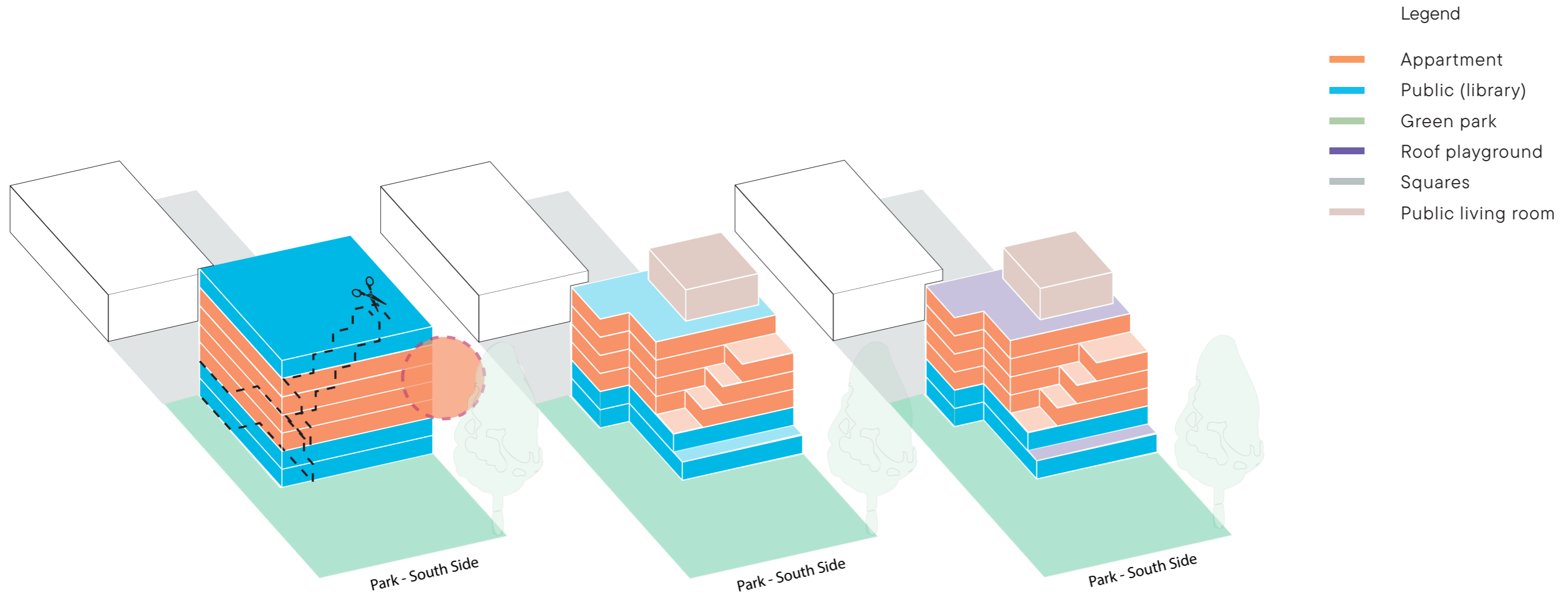




Figure 24
Axo of the building and the context
Own work

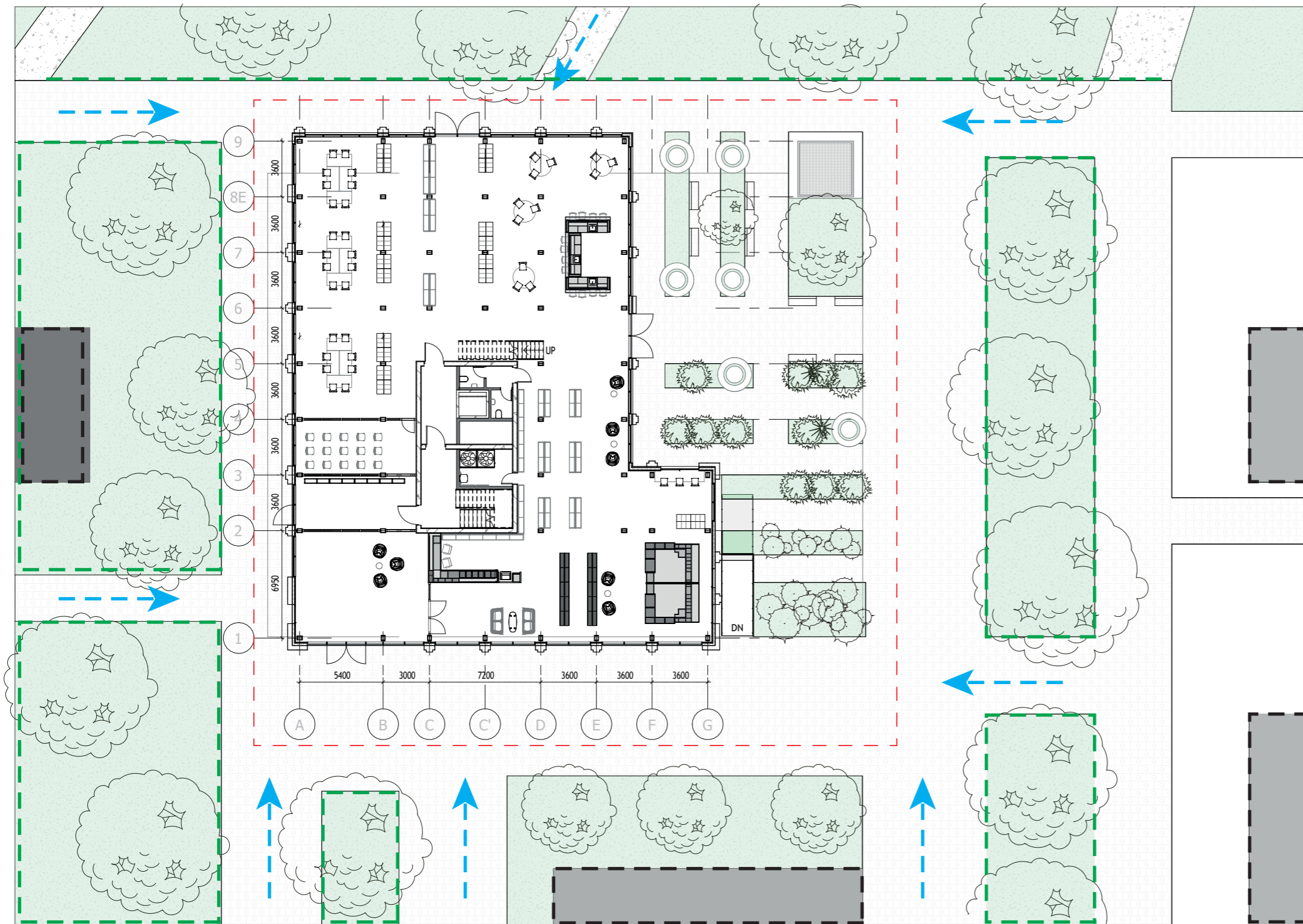


Figure 25
Library design start
Own Work

1:200 

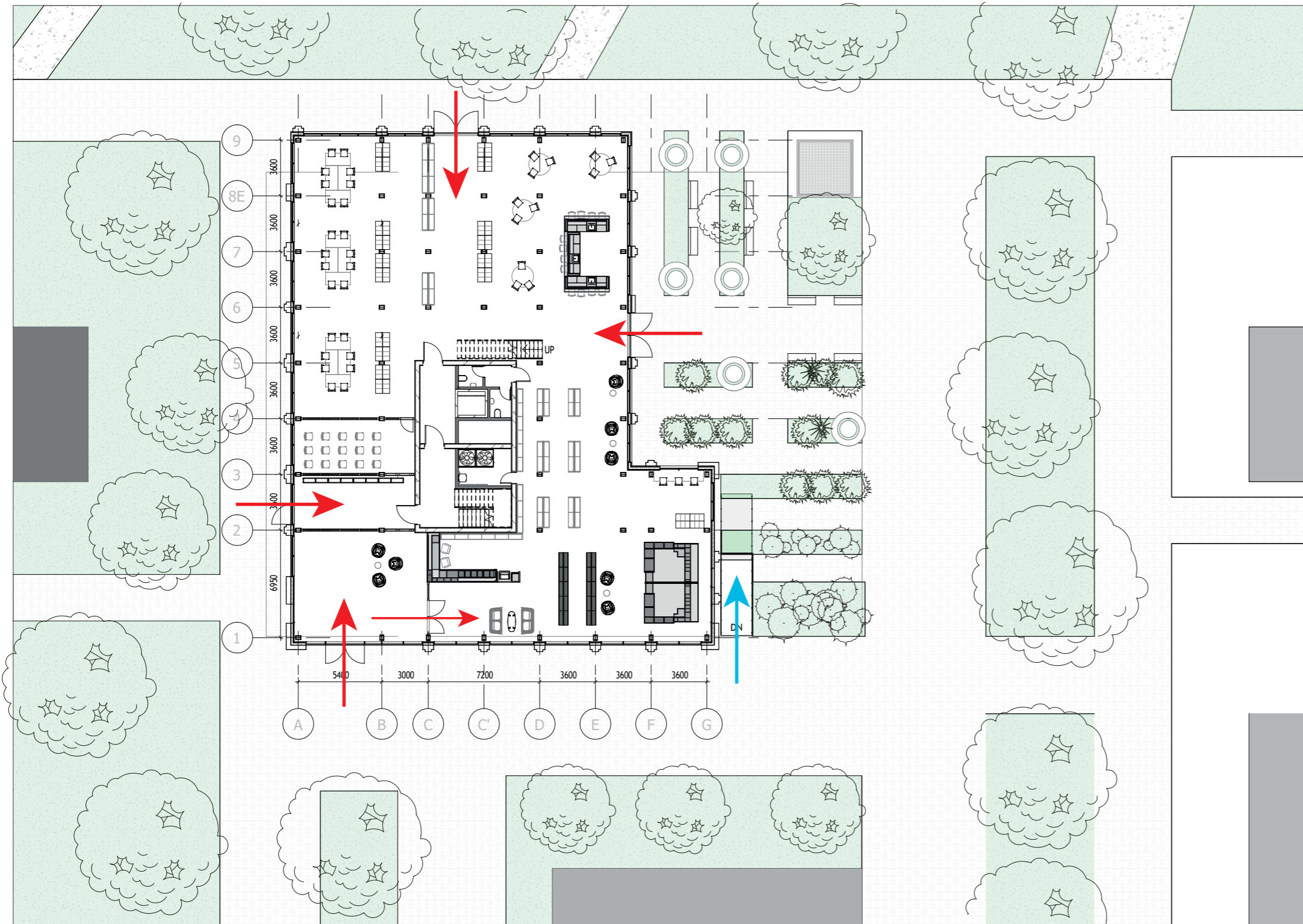


Figure 25
Library design start
Own Work

1:200 

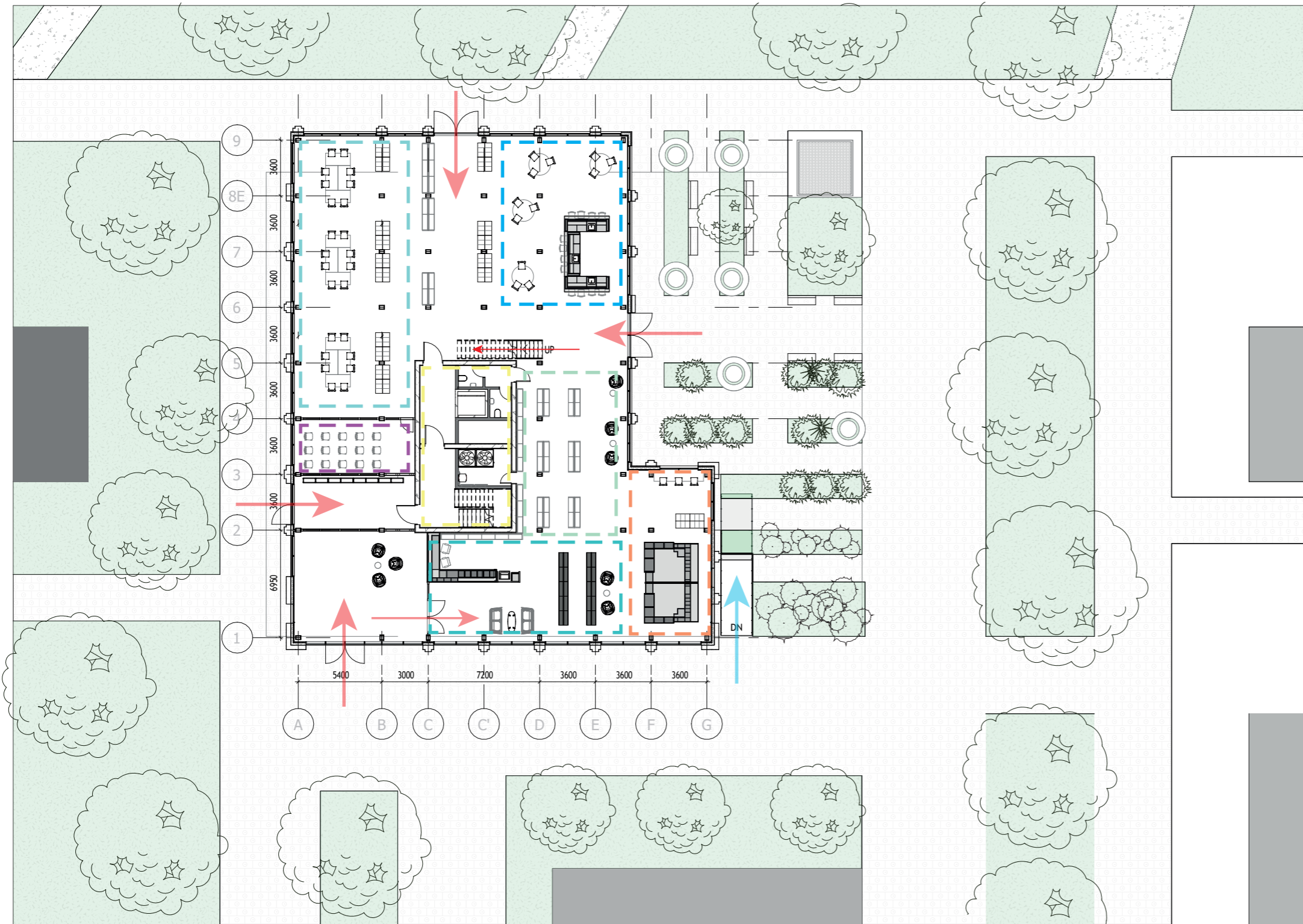


Figure 25
Library functions mapping
Own Work

1:200 

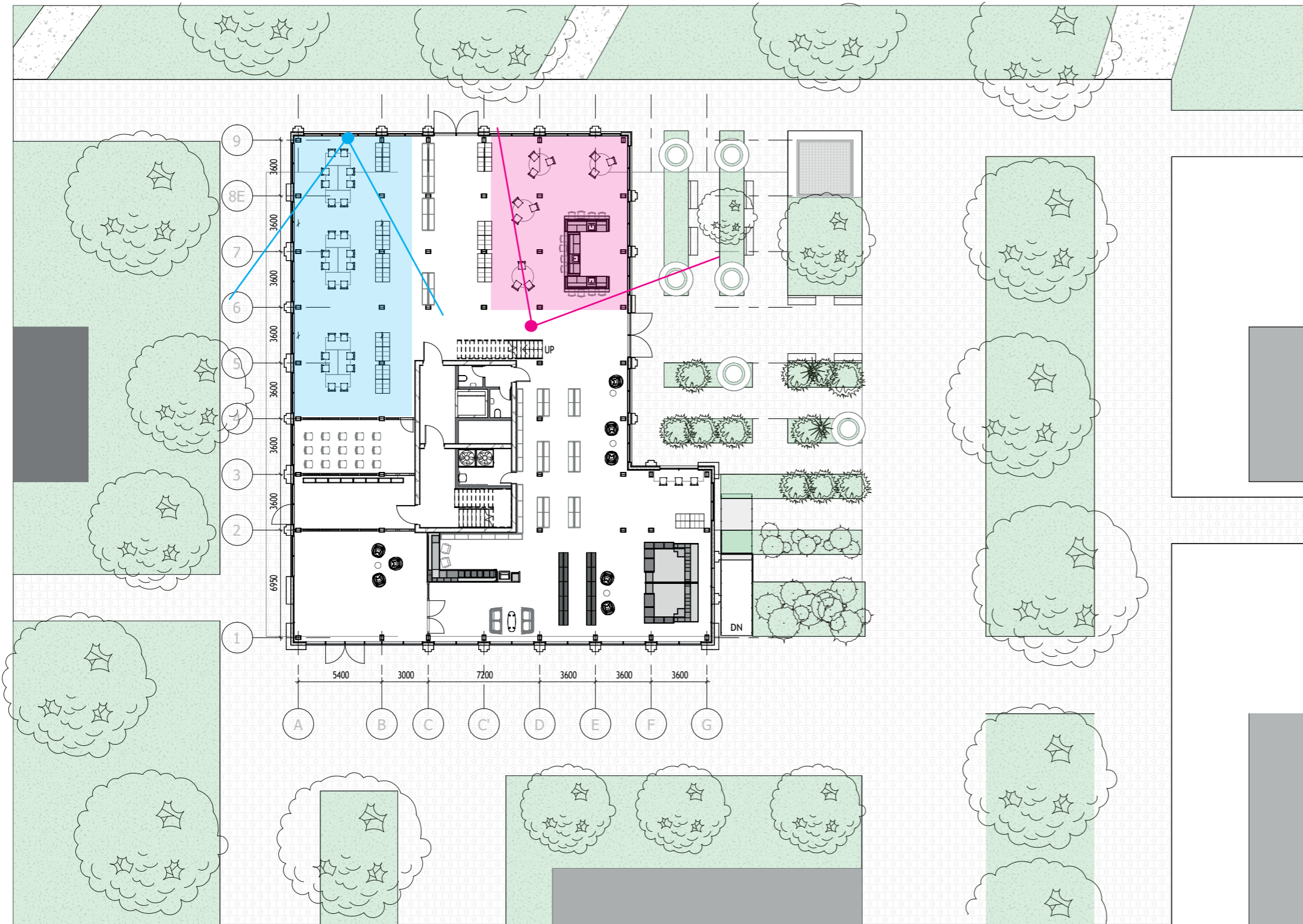


Figure 27
Library design start
Own Work

1:200 



Figure 28
Render interior Library - Bar
Own Work



Figure 29
Render interior Library -Shared Space
Own Work

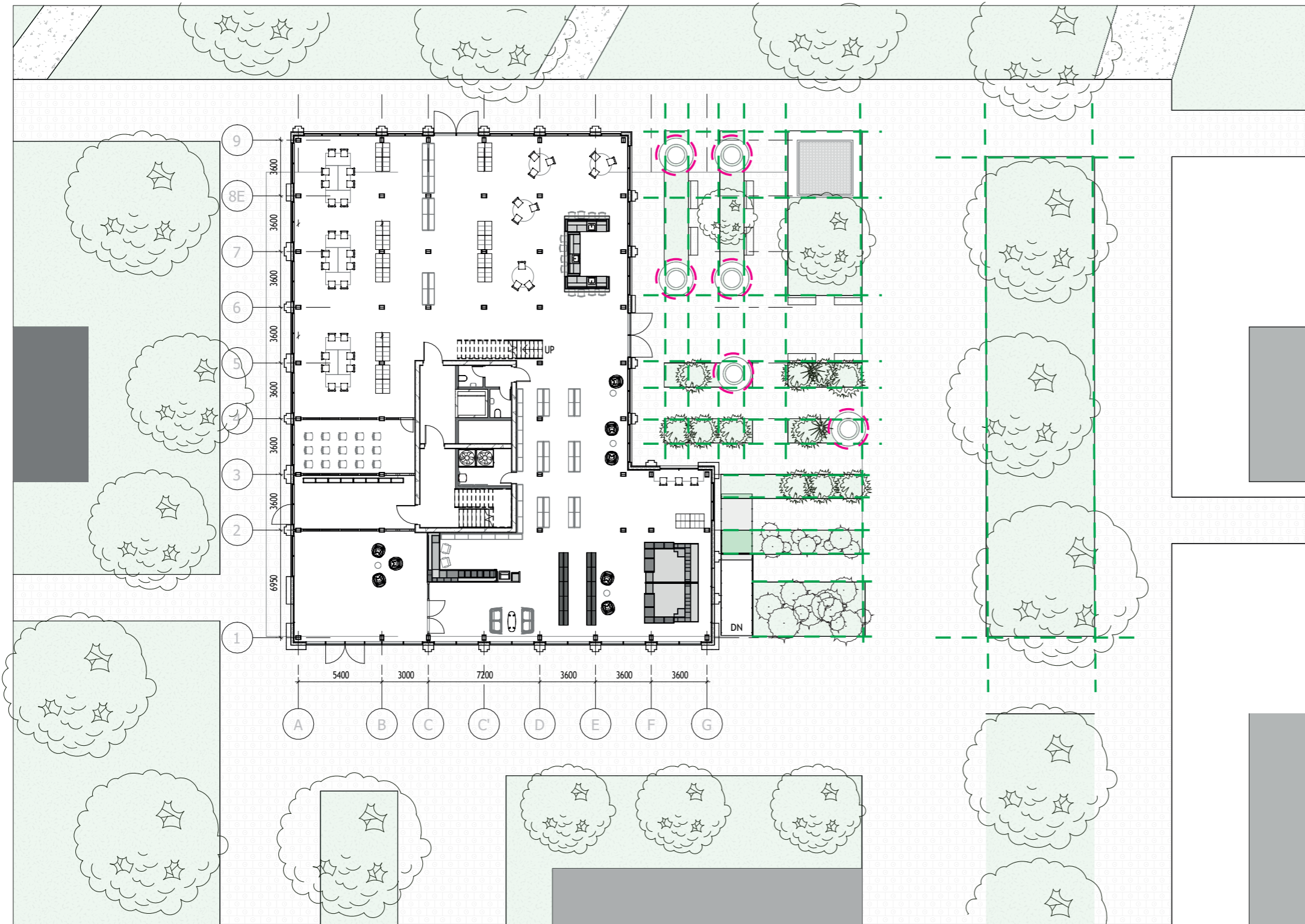


Figure 30
Library design start
Own Work

1:200 



Figure 33
Design North Facade
Own Work



Figure 34
Design South Facade
Own Work

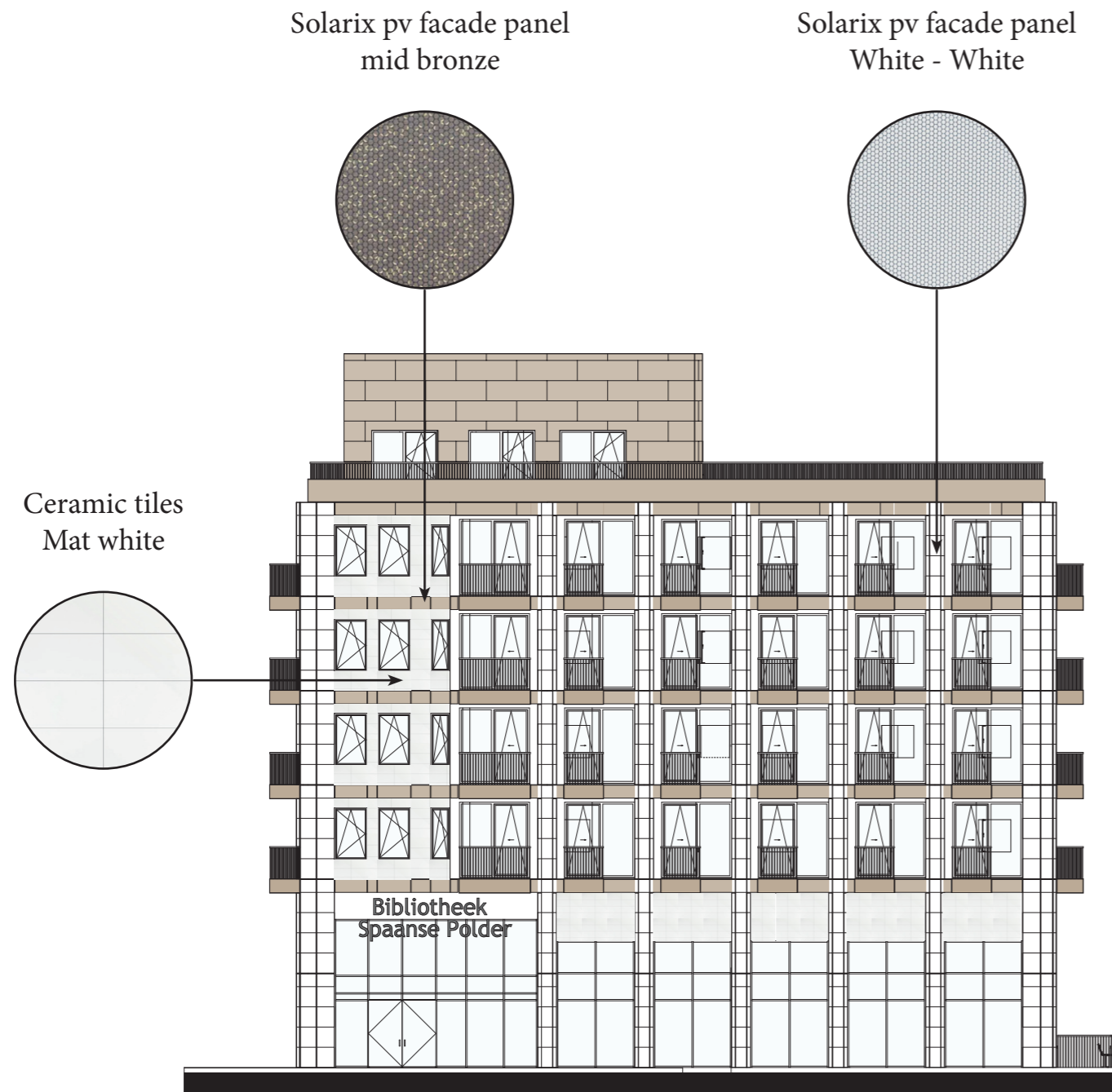


Figure 35
Design North Facade
Own Work



Figure 36
Design South Facade
Own Work



Figure 37
Design North Facade
Own Work

Figure 38
Design South Facade
Own Work



Figure 39
Render view from the park
Own Work



Figure 40
Render view from the park
Own Work



Figure 41
Render view public garden
Own Work



Figure 41
Render of the playground
Own Work

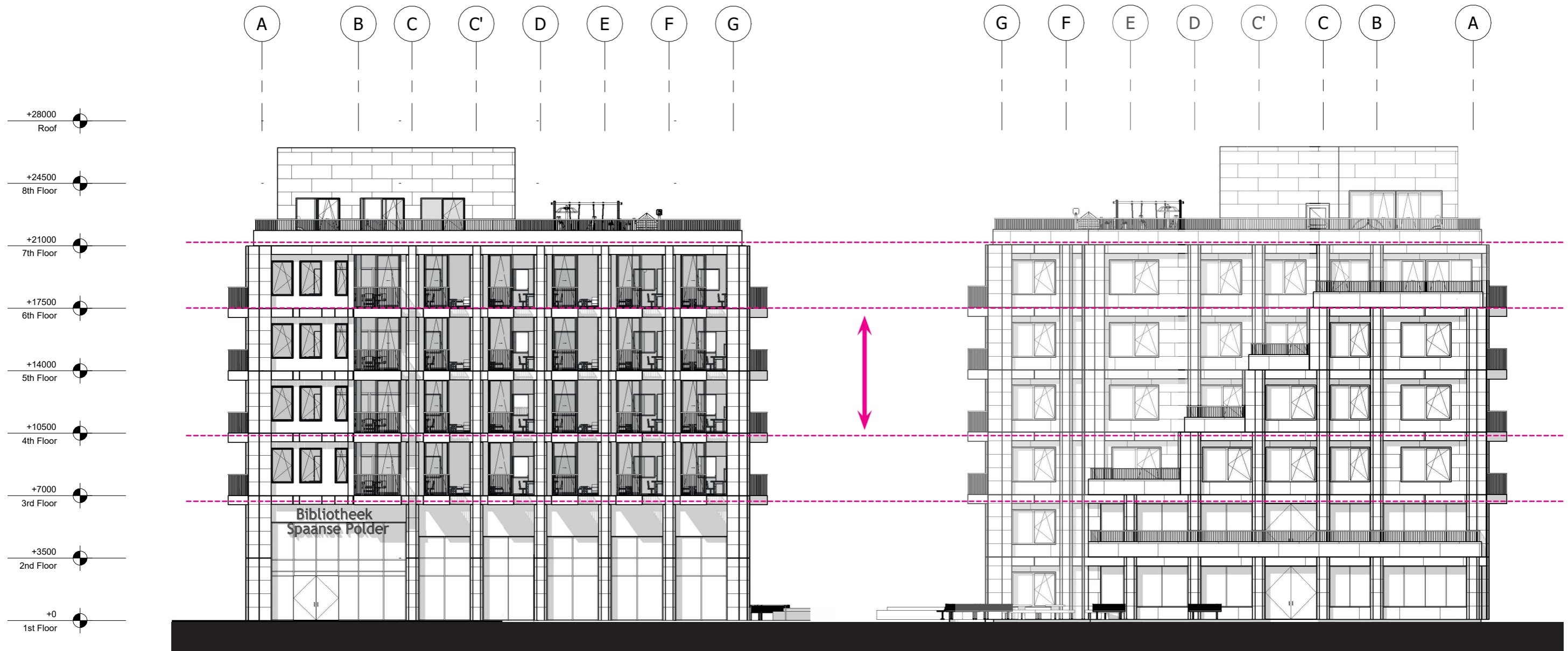
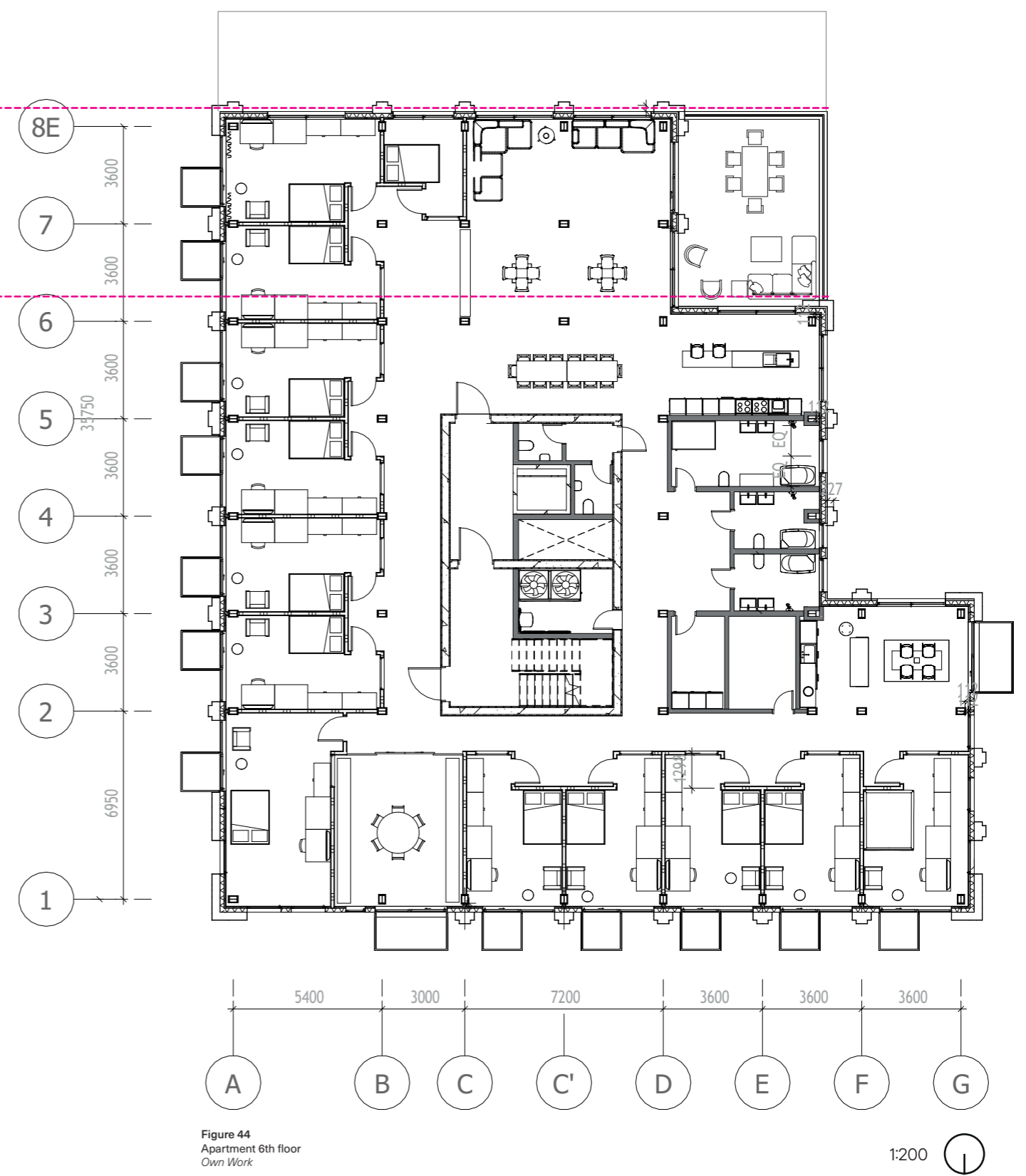
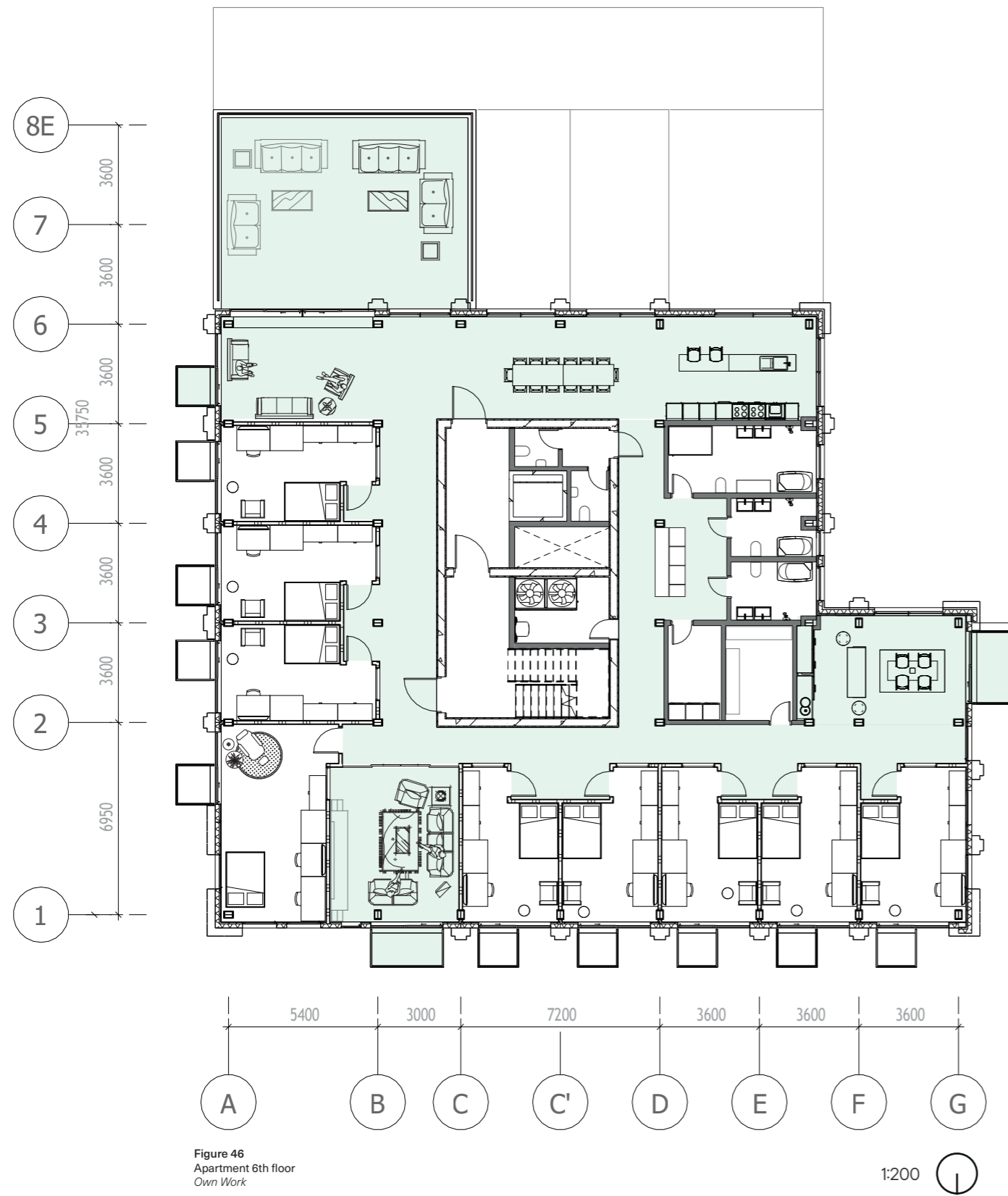


Figure 42
Apartment comparison
Own work



Apartment Design | entrance





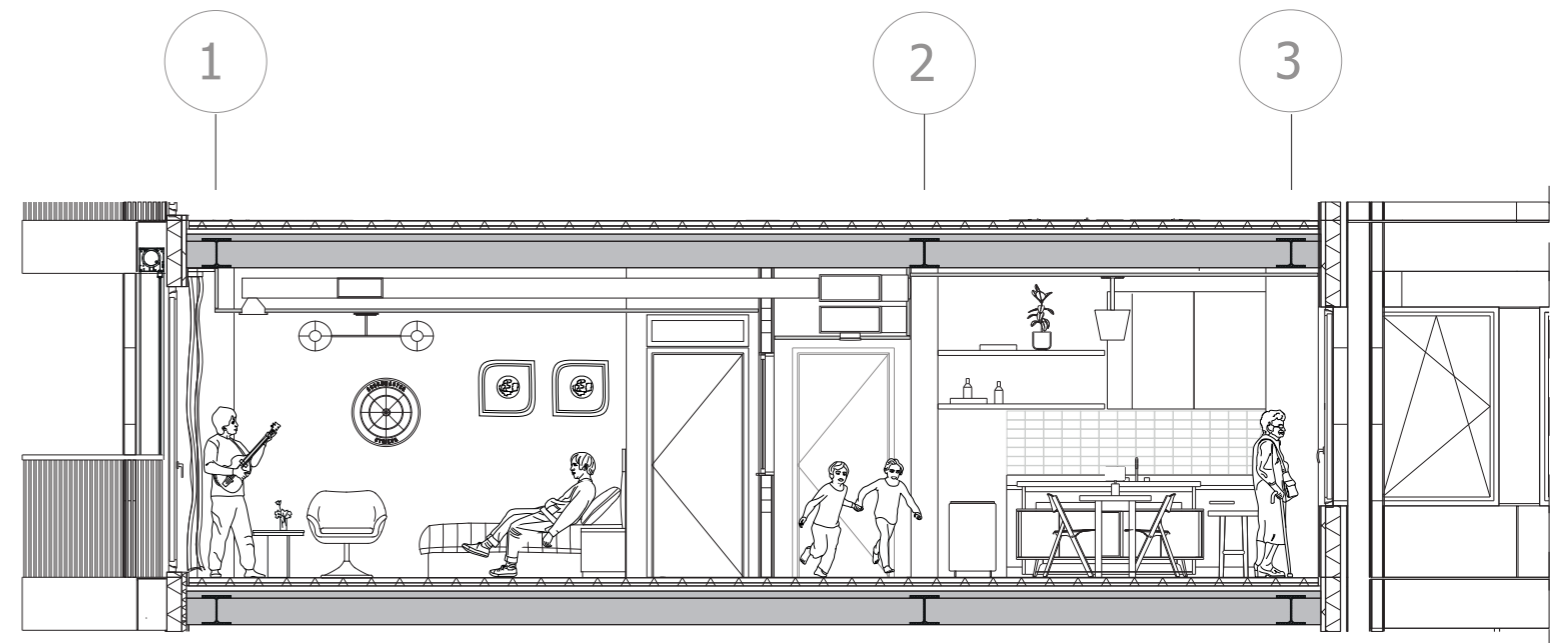
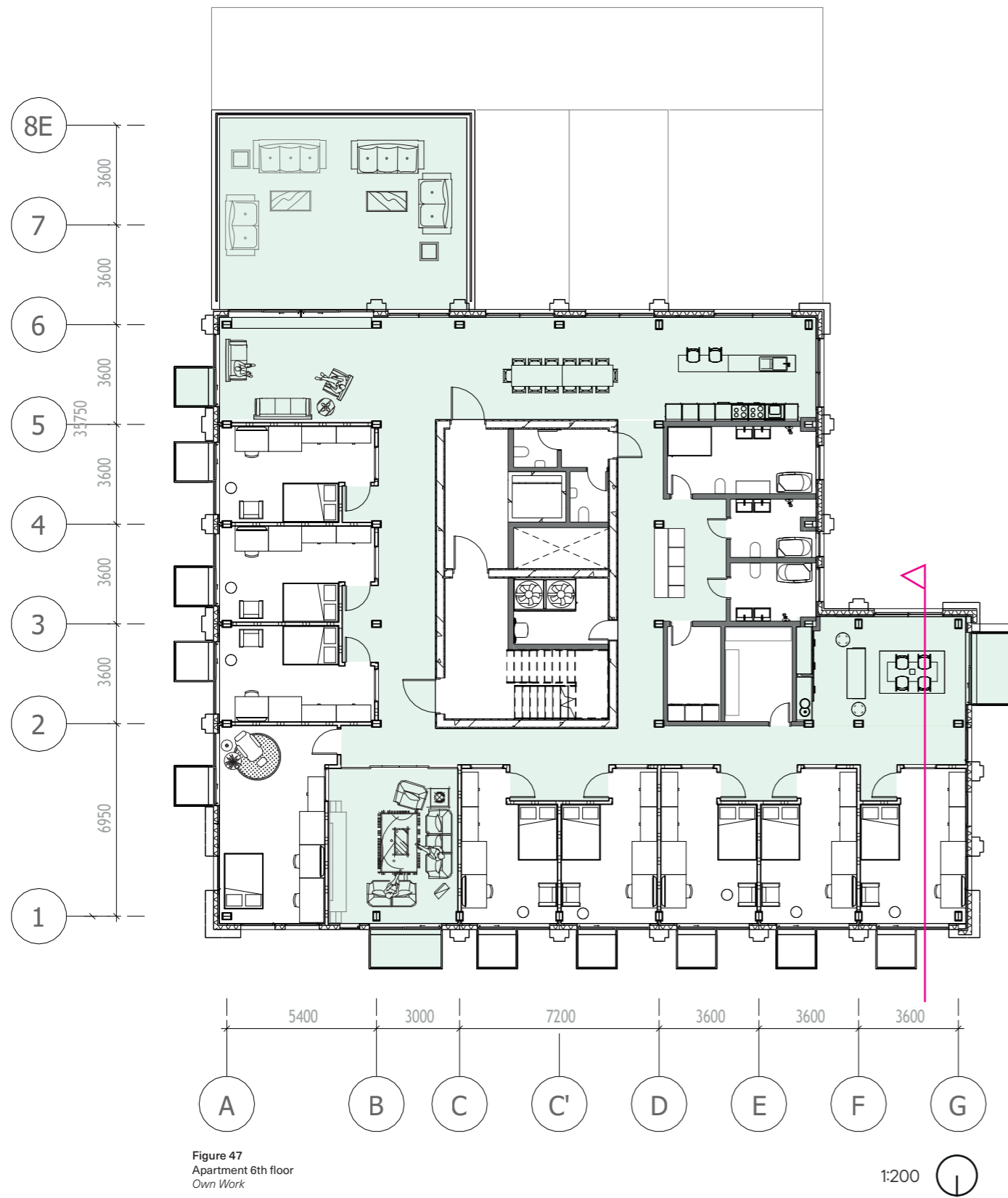




Figure 50
6th Floor Section
Own work

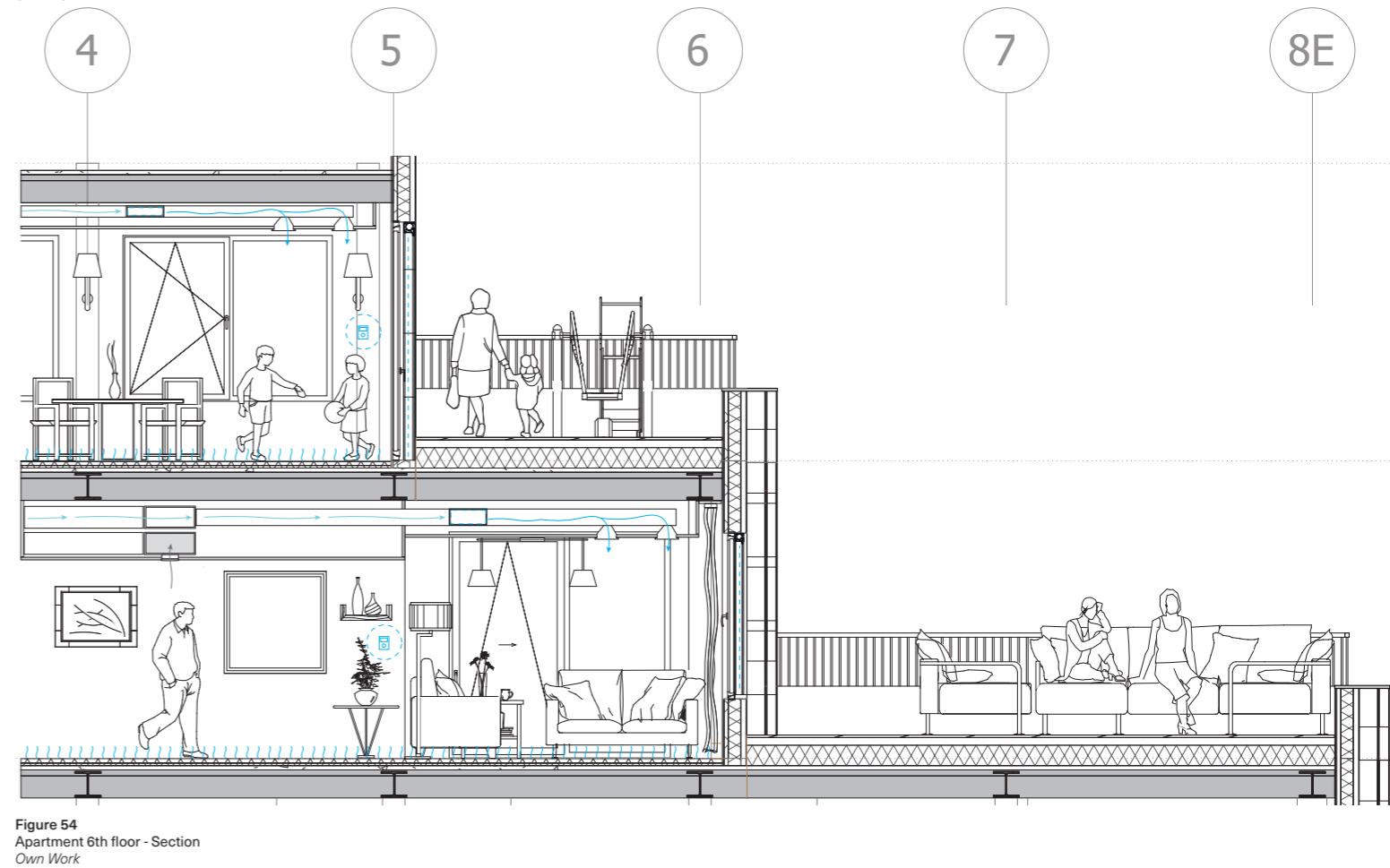
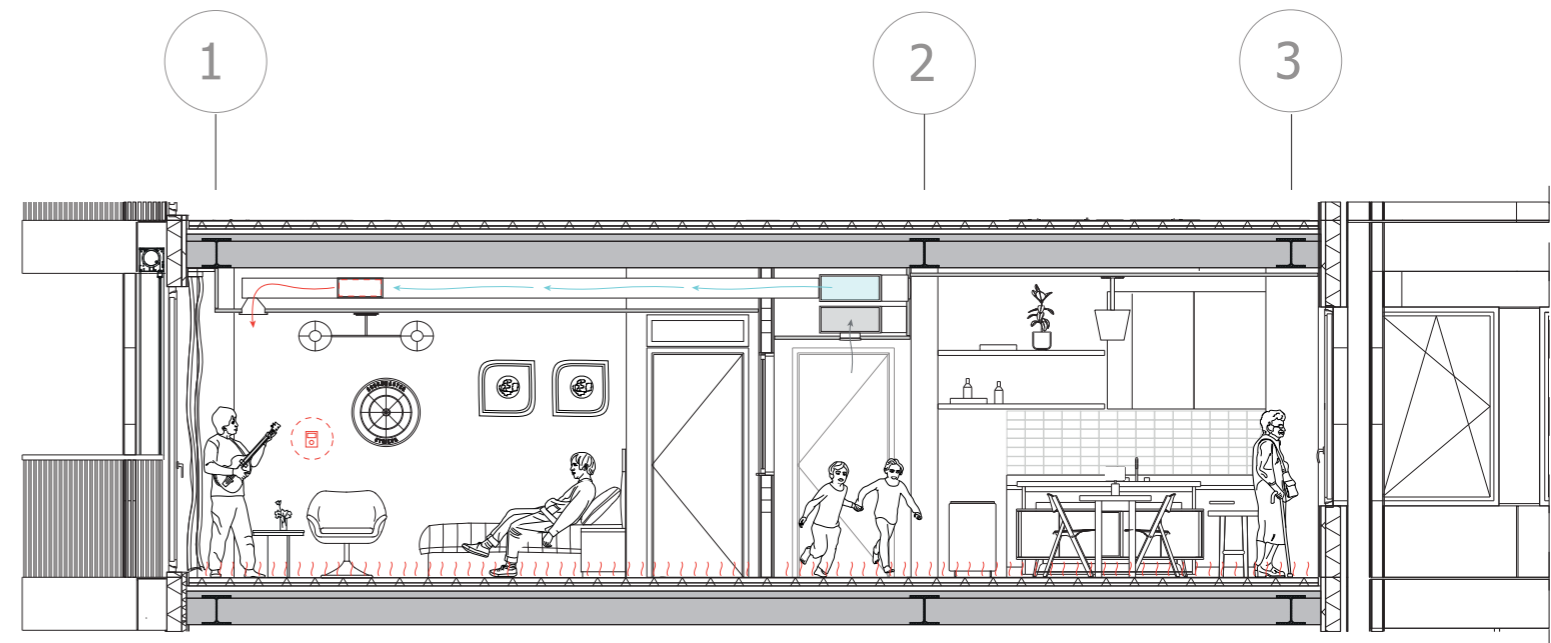
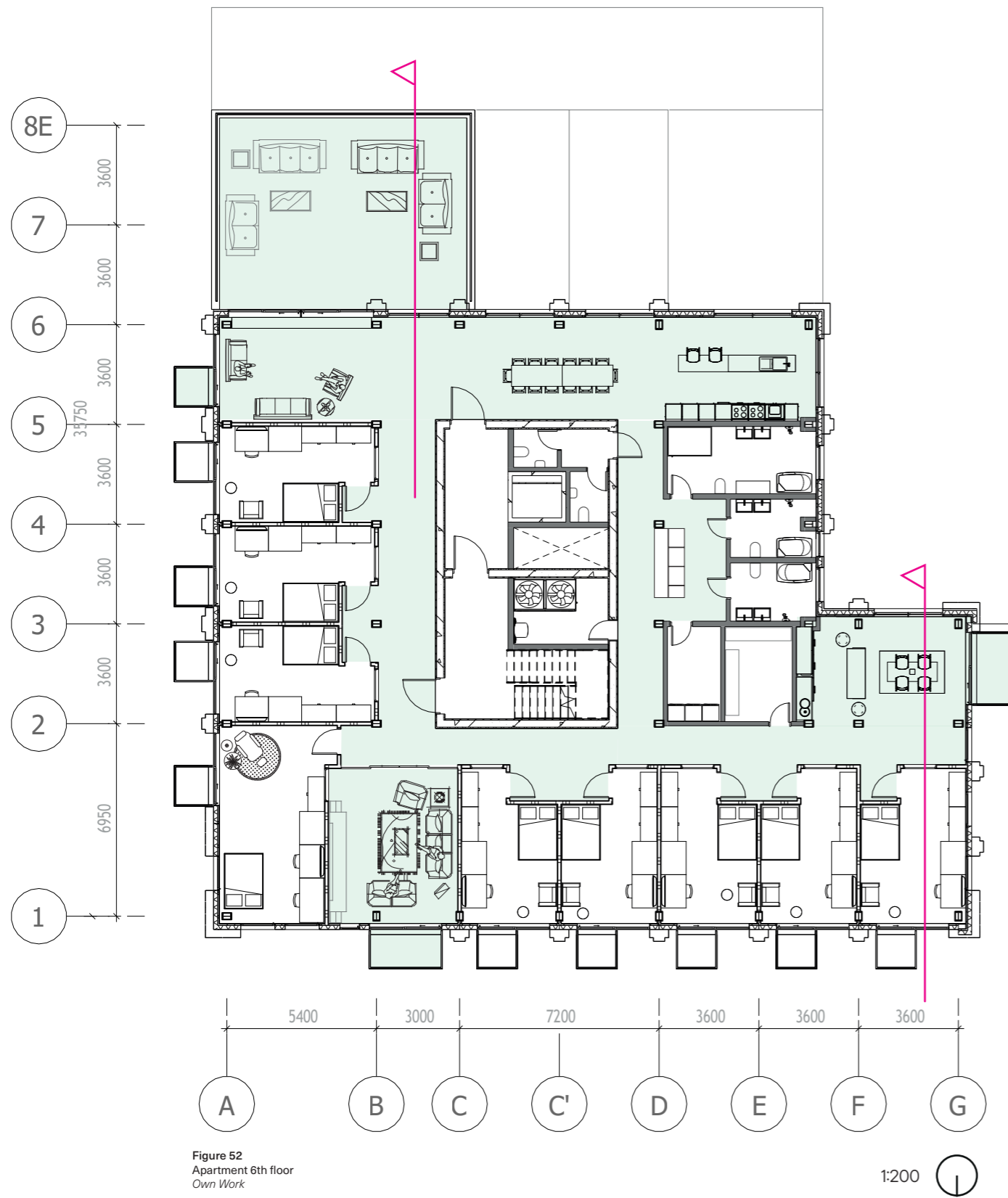




Figure 55
Render Terrace
Own Work

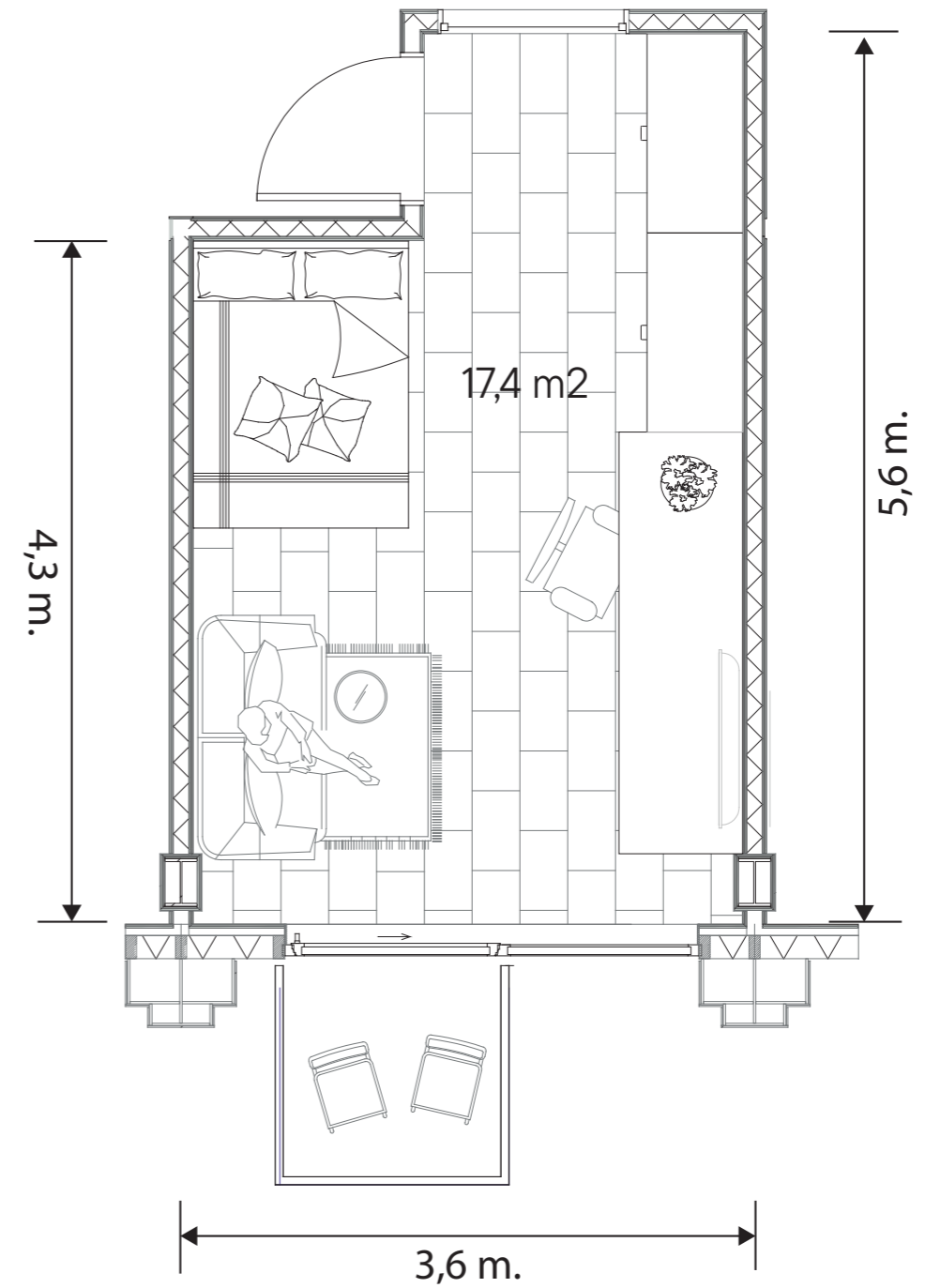
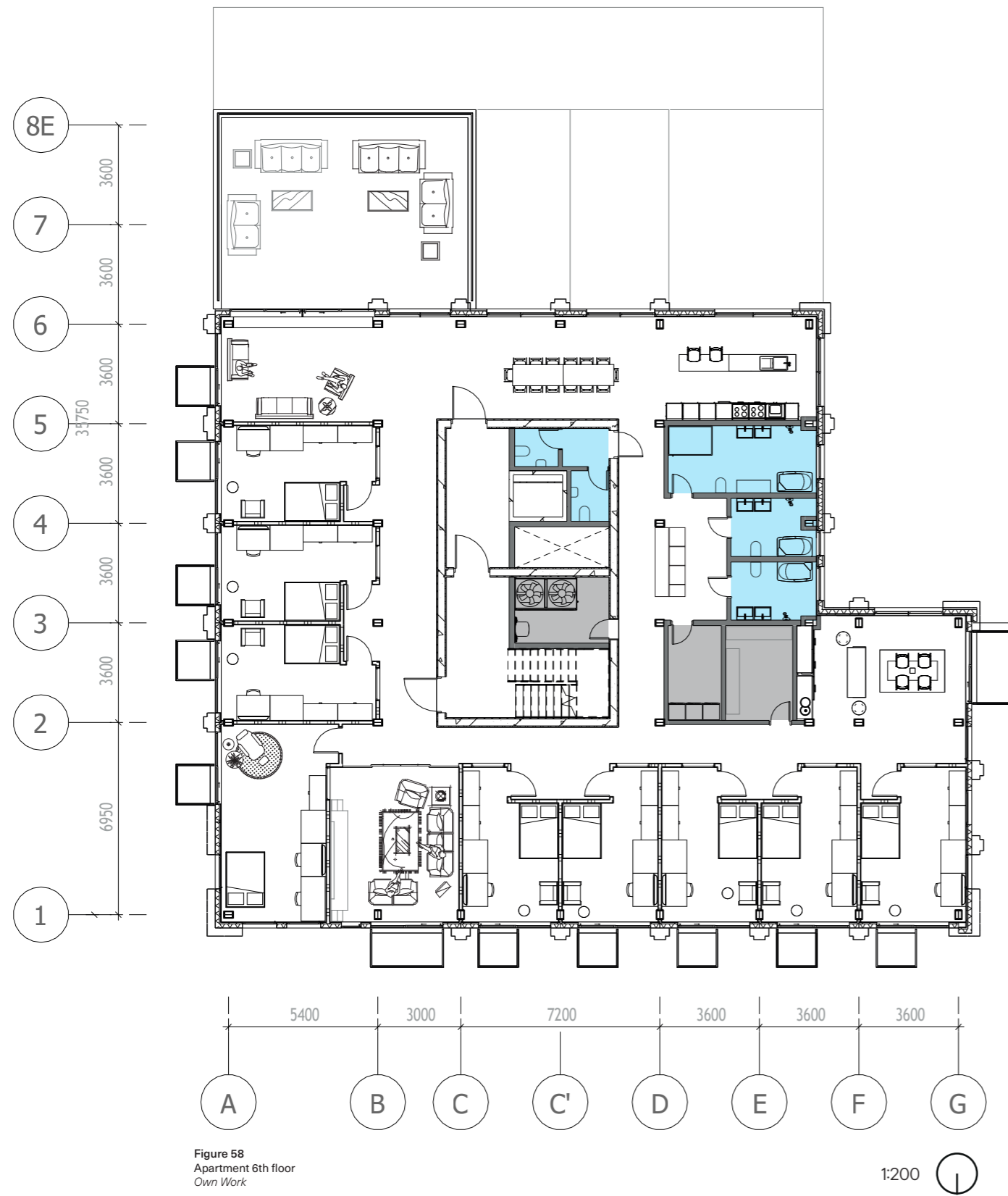




Figure 58
Render Bedroom
Own Work

Transitional housing | Shared toilets and bathrooms



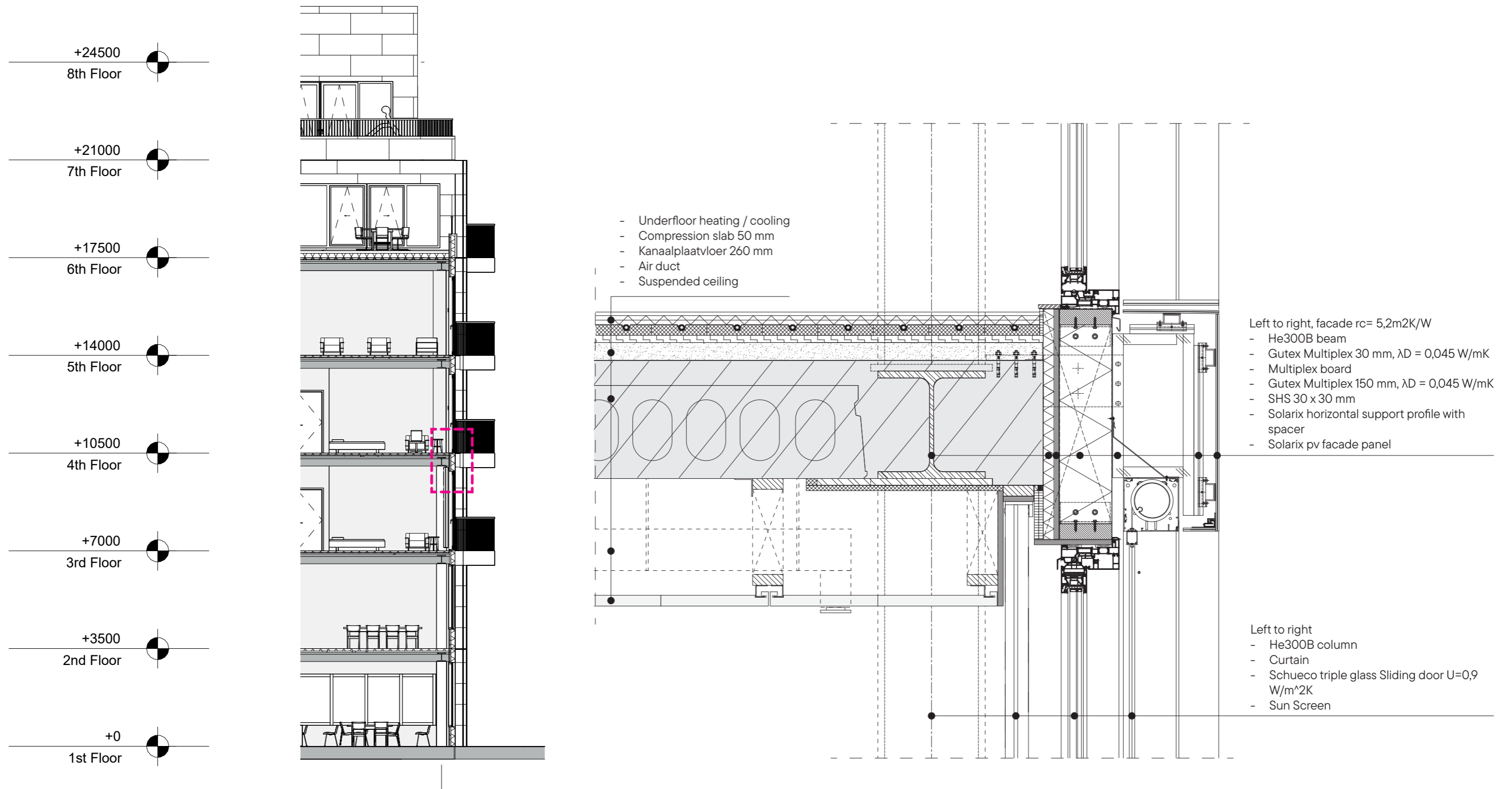


Figure 16
Phase 5 of the development of the Spaanse Polder
Fred Leeflang

Social Inclusion Conclusion

references

Bolt, G., Van Liempt, I., & Wrr. (n.d.). Stedelijke diversiteit en beleid: hoe gaan nationale en lokale overheden om met de groeiende diversiteit in steden. In *Governing Urban Diversity*.

Centraal Bureau voor de Statistiek. (2024, November 18). Woningvoorraad; woningtype op 1 januari, regio. Centraal Bureau Voor De Statistiek. <https://www.cbs.nl/nl-nl/cijfers/detail/85035NED>

Centraal Bureau voor de Statistiek. (2025a, December 16). Bevolkingsprognose: vanaf nu meer ouderen dan jongeren. Centraal Bureau Voor De Statistiek. <https://www.cbs.nl/nl-nl/nieuws/2025/51/bevolkingsprognose-van-af-nu-meer-ouderen-dan-jongeren>

Centraal Bureau voor de Statistiek. (2025b, December 17). Wat betekent armoede voor de leefsituatie? - Leven in Armoede 2025. Wat Betekent Armoede Voor De Leefsituatie? - Leven in Armoede 2025 | CBS. <https://longreads.cbs.nl/leven-in-armoede-2025/wat-betekent-armoede-voor-de-leefsituatie/>

Croxford, B., Domenech, T., Hausleitner, B., Hill, A. V., Meyer, H., Orban, A., Sanz, V. M., Vanin, F., & Warden, J. (2020). FOUNDRIES OF THE FUTURE: A Guide for 21st Century Cities of Making. In *TU Delft Bouwkunde eBooks*. <https://doi.org/10.47982/bookrxiv.9>

Czischke, D., Van Bortel, G., Hackauf, U., Jürgenhake, B., Konstantinou, T., Mooij, H., & Newton, C. (2025). *Veerkrachtige Wijken in Nederland: Een op wetenschappelijk onderzoek gebaseerde handreiking voor actie*.

Eenzaamheid | Leeftijd en geslacht. (n.d.). Volksgezondheid En Zorg. <https://www.vzinfo.nl/eenzaamheid/leeftijd-en-geslacht#eenzaam-volwassenen>

Gemeente Midden-Delfland. (2024). Woonvisie Midden-Delfland 2024-2030 met een doorkijk naar 2040 [Report]. https://cuatro.sim-cdn.nl/middendelfland/uploads/woonvisie_midden_delfland_vastgesteld_020724.pdf?c-b=iSUoggAb

Klinenberg, E. (2018). *Palaces for the people : how social infrastructure can help fight inequality, polarization, and the decline of civic life*. Crown. <https://lccn.loc.gov/2018002837>

Klinenberg, E. (2020). *Palaces for the People: How to Build a More Equal and United Society*. Arrow.

Ministerie van Algemene Zaken. (2023, July 24). 900.000 nieuwe woningen om aan groeiende vraag te voldoen. Volkshuisvesting | Rijksoverheid.nl. <https://www.rijksoverheid.nl/onderwerpen/volkshuisvesting/nieuwe-woningen>

RIGO Research en Advies, Buys, A., & Heringa, A. (2018). *Sociale verschillen en overeenkomsten in Zuid-Holland*. <https://kennis.zuid-holland.nl/wp-content/uploads/2022/05/socialeverschillenovereenkomsteninzuid-holland-1.pdf>

Sociaal en Cultureel Planbureau. (2024). *Verduurzaming als sociaal-maatschappelijke opgave*. In *Sociale en Culturele Ontwikkelingen 2024*.

Topotijdreis: 200 jaar topografische kaarten. (n.d.-a). Topotijdreis. <https://www.topotijdreis.nl/kaart/1872/@92656,437777,7.82>

Topotijdreis: 200 jaar topografische kaarten. (n.d.-b). Topotijdreis. <https://www.topotijdreis.nl/kaart/1962/@92656,437777,7.82>

Topotijdreis: 200 jaar topografische kaarten. (n.d.-c). Topotijdreis. <https://www.topotijdreis.nl/kaart/2024/@87836,441635,7.82>

United Nations. (2016). *Leaving no one behind: the imperative of inclusive development*. <https://www.un.org/esa/socdev/rwss/2016/full-report.pdf>

Vereniging Gehandicaptenzorg Nederland. (2024, June 3). Onderzoek Minister van Gehandicaptenzaken: Eenzaamheid onder mensen met beperking groot probleem. VGN. <https://www.vgn.nl/nieuws/onderzoek-minister-van-gehandicaptenzaken-eezaamheid-onder-mensen-met-beperking-groot-probleem#:~:text=Onderzoek%20Minister%20van%20Gehandicaptenzaken:%20Eenzaamheid%20onder%20mensen%20met%20beperking%20groot%20probleem,-Nieuws%2028%20april&text=Mensen%20met%20een%20beperking%20voelen,Nederlanders%20met%20en%20zonder%20beperking.&text='Ik%20ben%20geschrokken%20van%20deze,we%20niet%20laten%20gebeuren!>