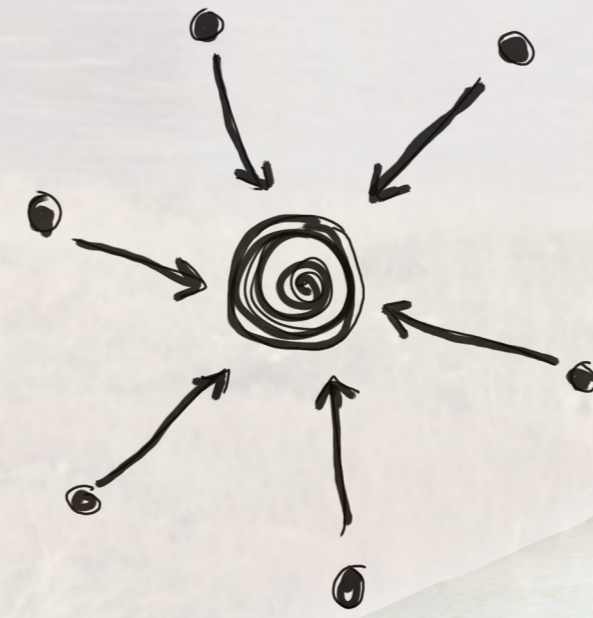
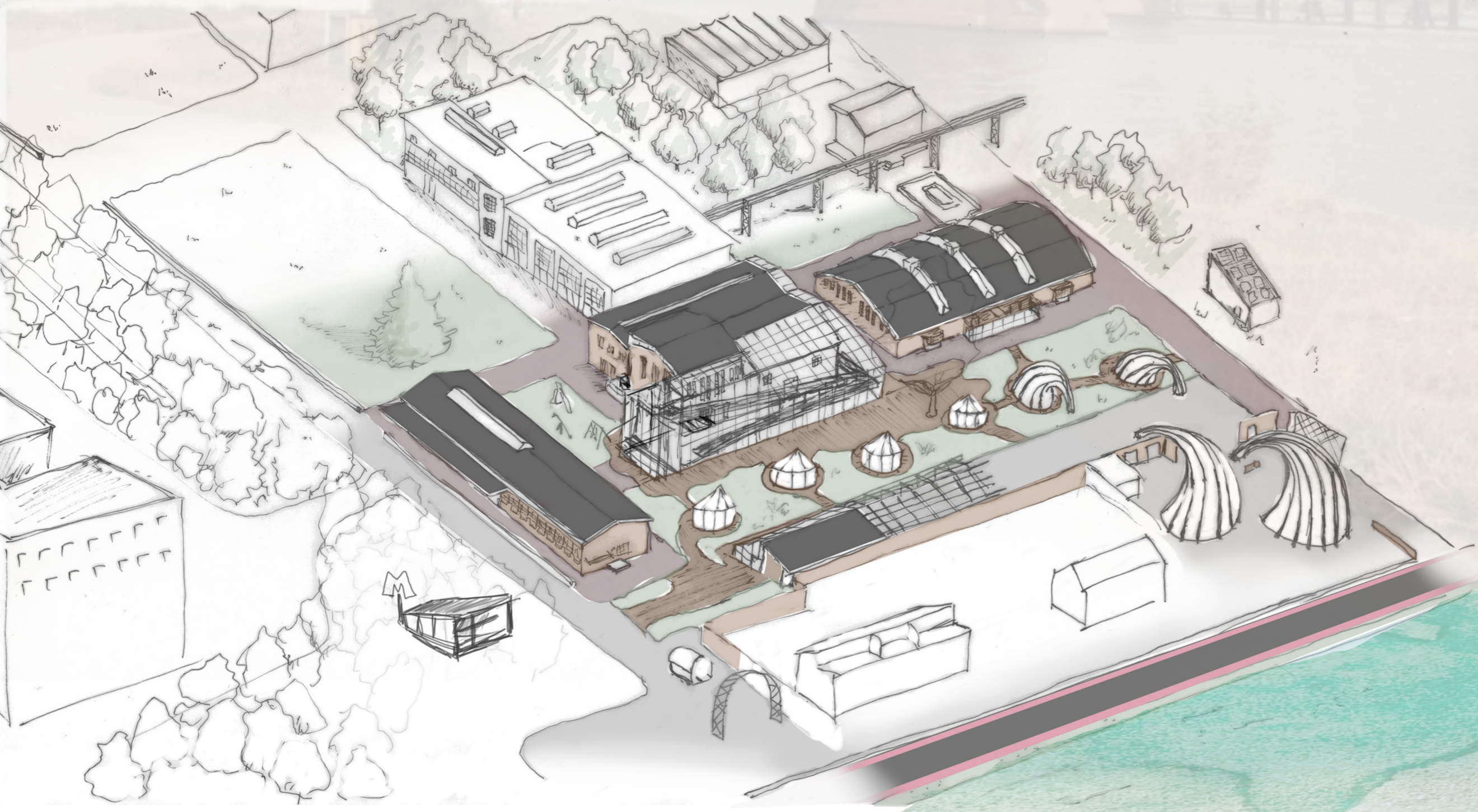


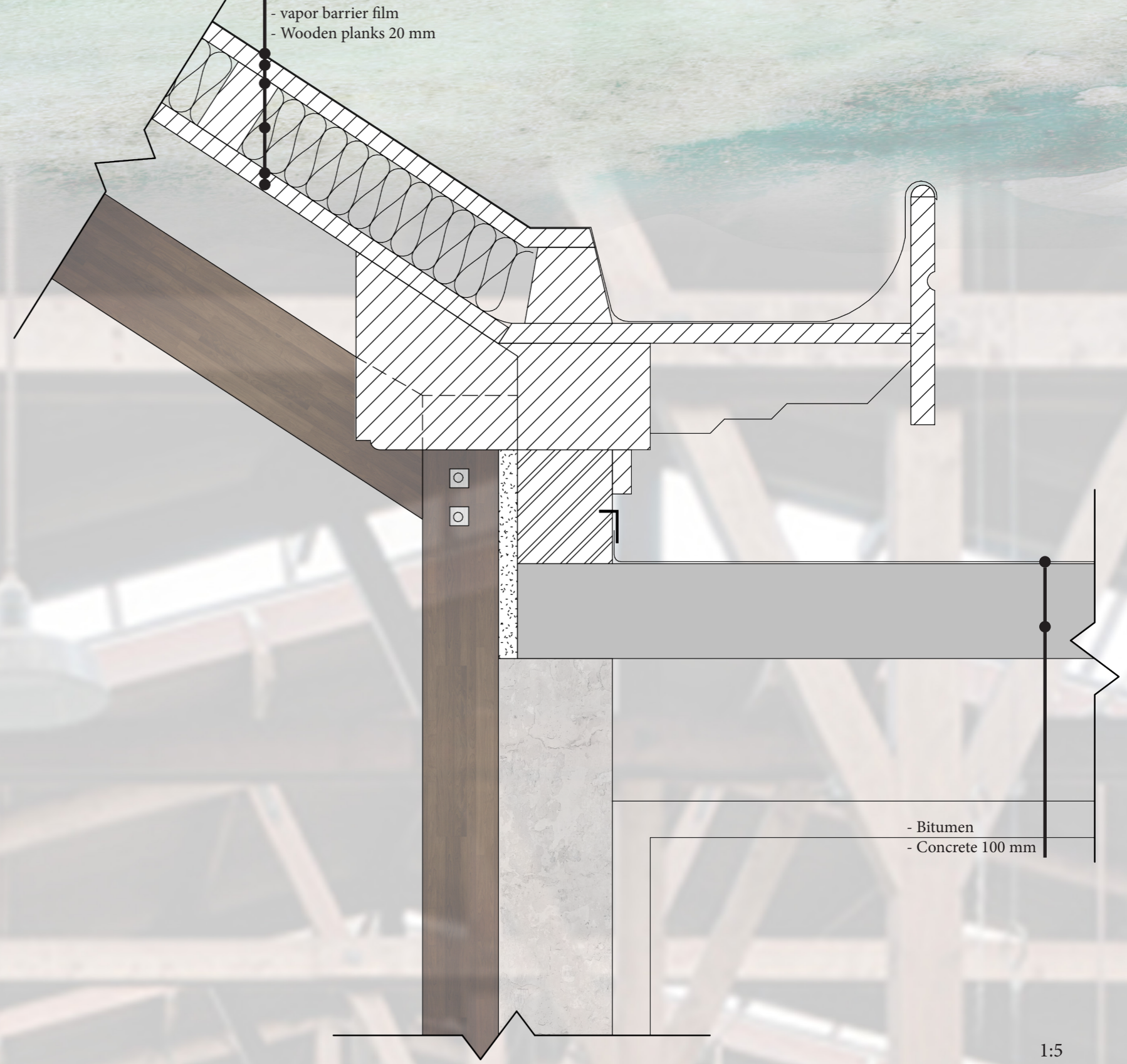
Hembrug - The community

A place for everyone

AR3AH110 H & A Graduation Studio
 Revitalising Heritage
 27-01-2020
 Soumaya Boujamaa
 4287258
 Annete Marx
 Frank Koopman

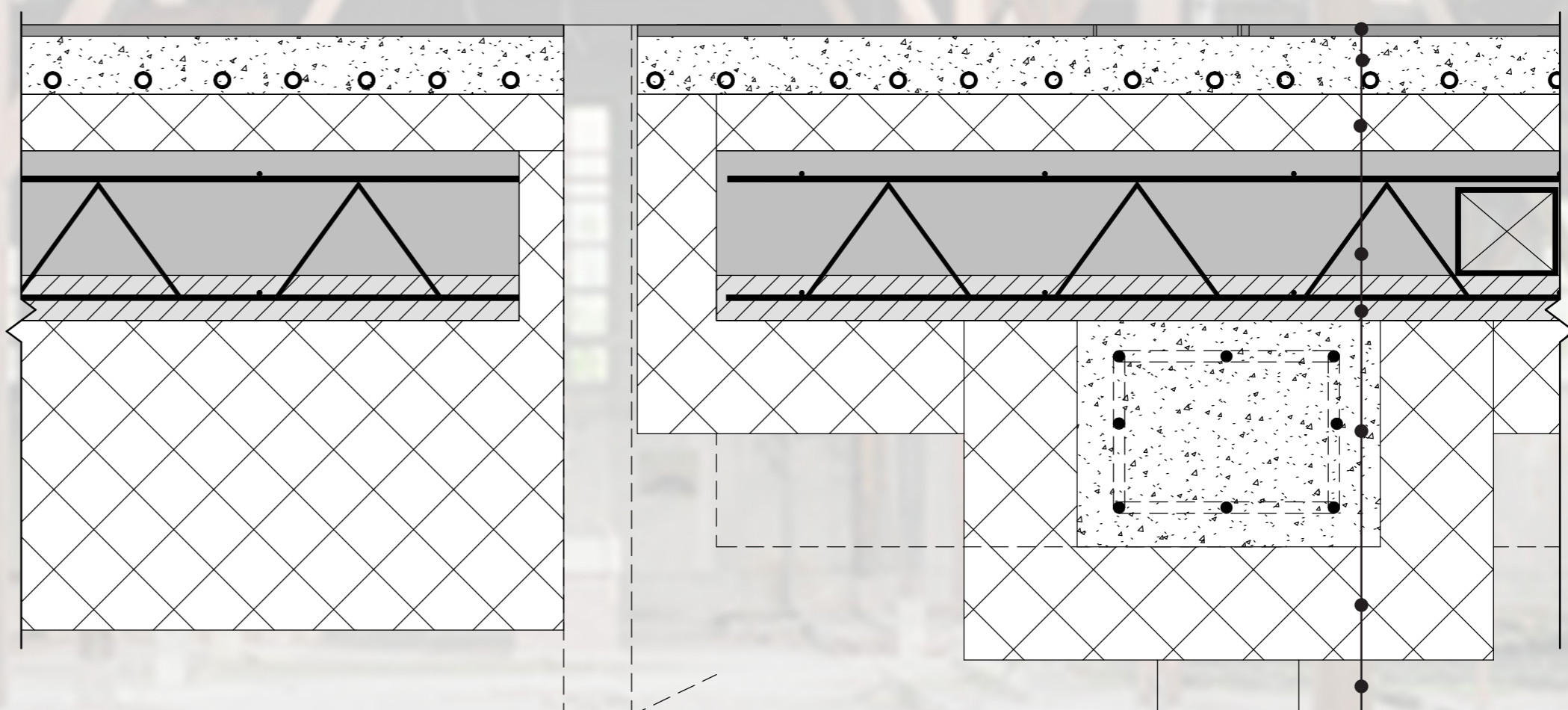
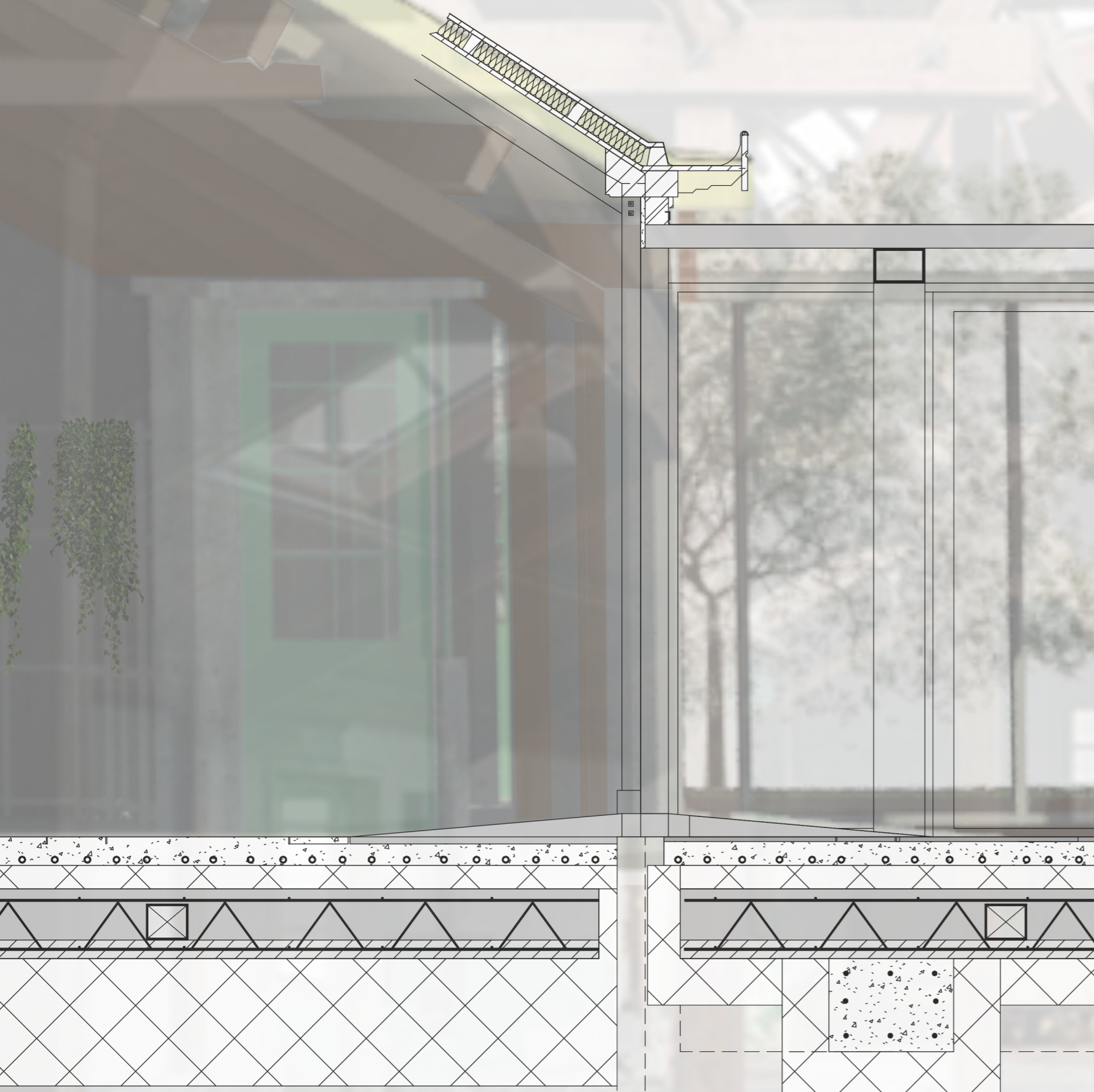


- Bitumen
- Wooden planks 20 mm
- water permeable film
- Hemflax 80 mm
- 80x50 mm, distance between centers 300 mm
- vapor barrier film
- Wooden planks 20 mm



- Bitumen
- Concrete 100 mm

1:5



- Tiles 300x300x45 mm
- Throw floor with floor heating 102 mm
- BioFoam insulation (hard) 100 mm
- Precast concrete panel
- Poured concrete 220 mm with ventilation ducts
- Prefabricated concrete panel with steel reinforcement 80 mm
- Foundation beam poured concrete
- Concrete foundation (screw) piles

1:10

1:20