



Exhibition Route

- ① Main entrance & meeting area
- ② Groepsonderkomen R622
Reception
Exhibition: General history of the site
- ③ Woonschuilplaats .1
What if armed conflict was here?
Reimagining home spaces through VR
- ④ Munitiebergplaats R134
Video exhibition: What is the environmental impact of warfare?
Hosting meetings and discussions outside exhibition hours
- ⑤ Open areas
Areas for storytelling, performance, discussion, and enjoyment
- ⑥ Temporary pavilions
Medics in Conflict: Video testimonies from healers across divides
- ⑦ Keuken R645
Community-run open kitchen
Open outside exhibition hours
- ⑧ Woonschuilplaats .2
Digital archive
Community computer room
- ⑨ Badhuis
Mixed media exhibition: Where does armed conflict happen?
- ⑩ Woonschuilplaats .3
Further reading room
Community library
- ⑪ W.C.
Public bathroom
- ⑫ Reconciliation areas
Don't forget to enjoy the park :)

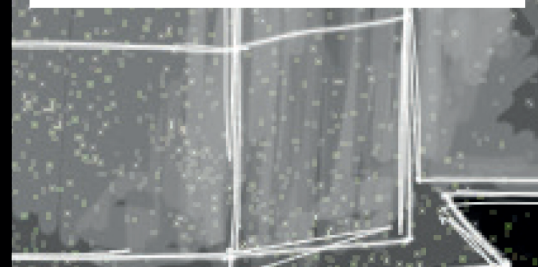
Reconciliation Park

Reconciliation park is a historic monument, it is at once an experimental exhibition, a discussion space, a public park, and a residential area. Please be respectful of the site, its history, its residents, and all who share this space.

The permanent exhibition follows a route through the World War II Atlantikwall bunkers in the park. Off the main path, a series of temporary pavilions complements the exhibition.

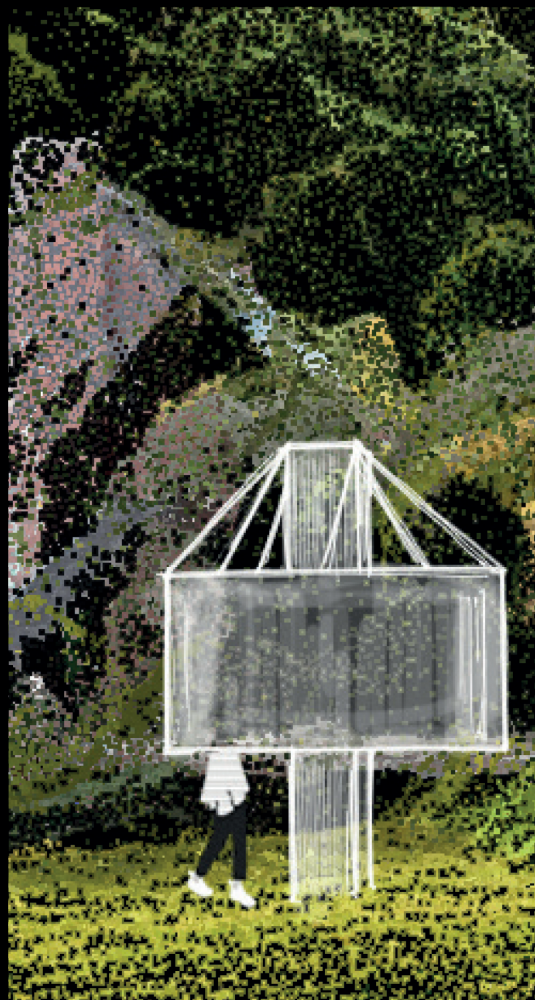
The area remains functioning as a public park. Access to the rooftops of the housing units is provided through the bunkers, offering views across the park.

For any questions, please ask at the reception.



The Temporary Pavilions

The temporary pavilions are arranged along a mental Dymaxion projection of the world on the site. The brick paths follow the meridians of this map. Take one of the paths and venture to faraway lands.



The Exhibit

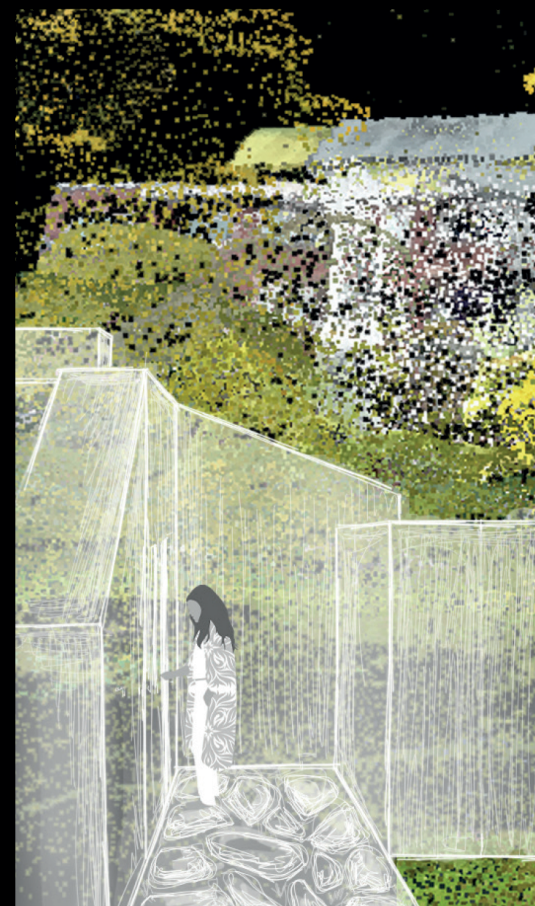
Each pavilion marks a location in the world where armed violence is now reshaping everyday life. At its core, two opposing video projections tell the stories of medics who chose to care in the midst of conflict, each working at a different side of the divide. Around you, panoramic landscapes unfold - serene, quiet, yet separated by warfare.

Be open. Listen to both sides...



The Bunkers

Follow the main path to explore the permanent exhibition. While distant forces shape conflict, its consequences are experienced at a personal and environmental level. By reimagining conflict in home spaces rather than foreign lands, the exhibition invites you to empathize with the "other".



The Community Kitchen

Along the path, you will find the community-run open kitchen. Here, park residents welcome you to talk, connect, and share a meal.



Various events and meetings are organized at the open kitchen and the auditorium outside the exhibition opening hours. Everyone is welcome!