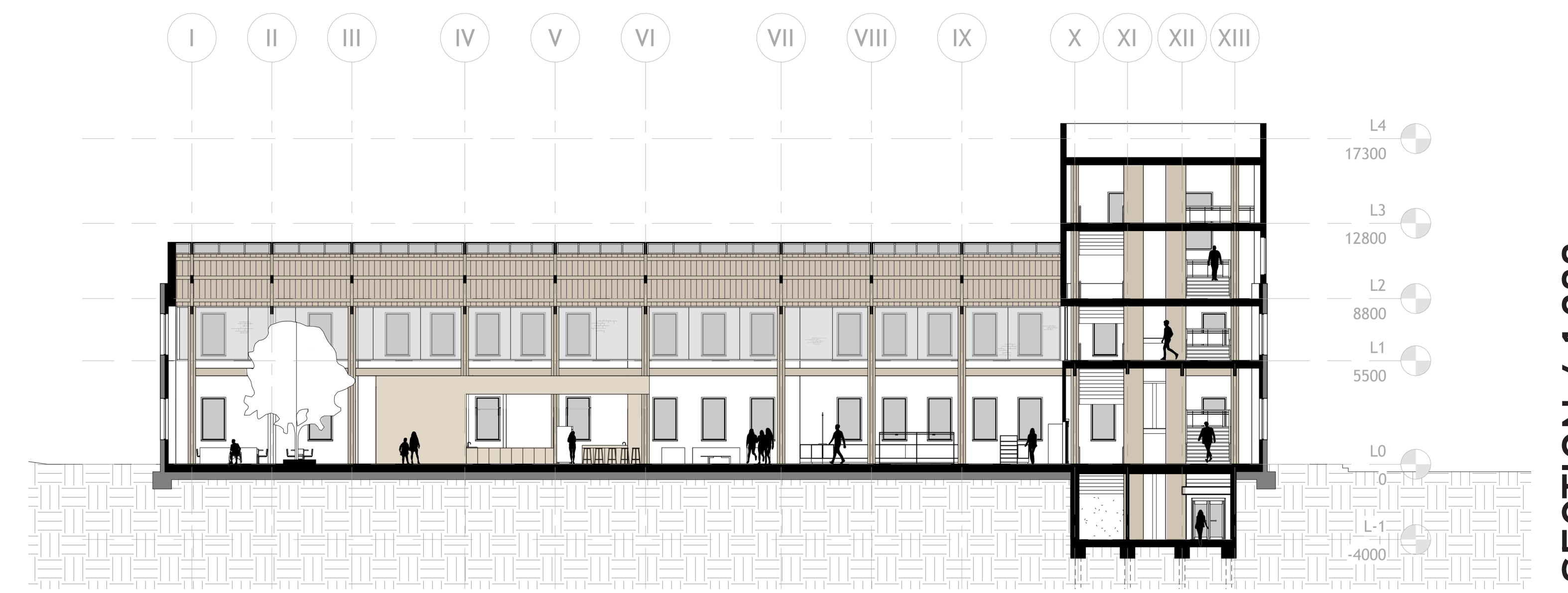


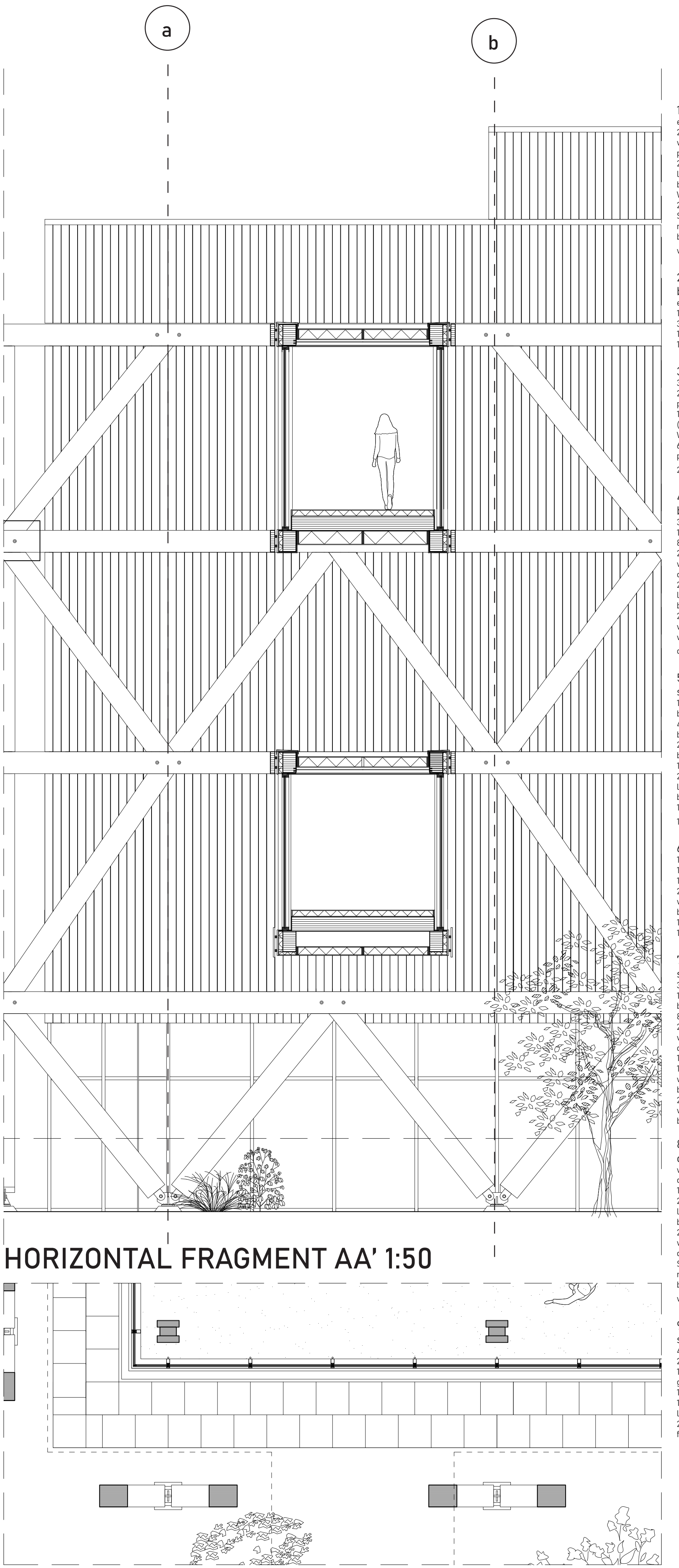


NORTH ELEVATION 1:200

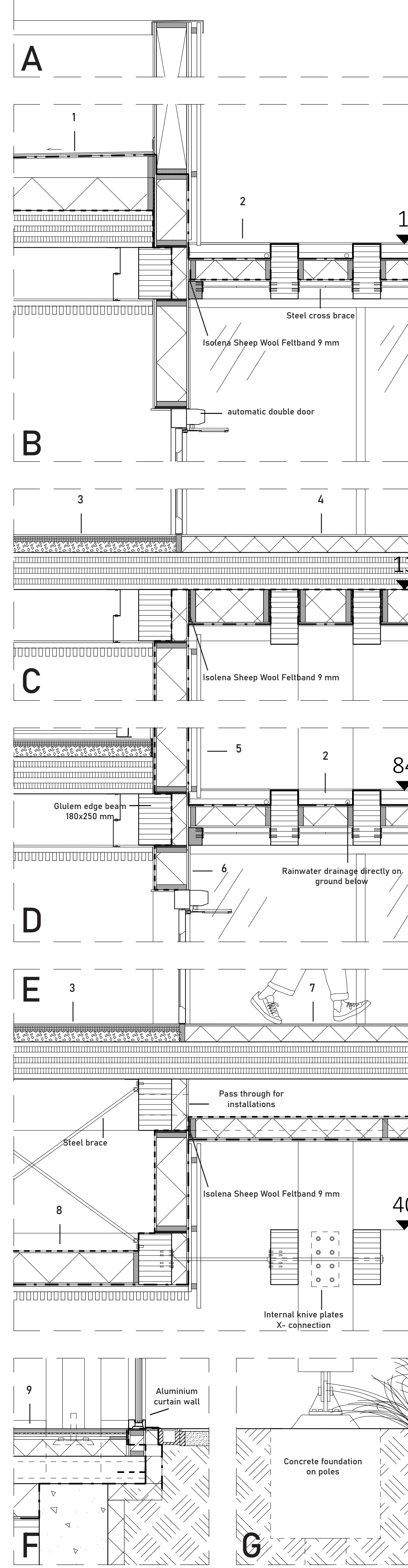


SECTION 4 1:200

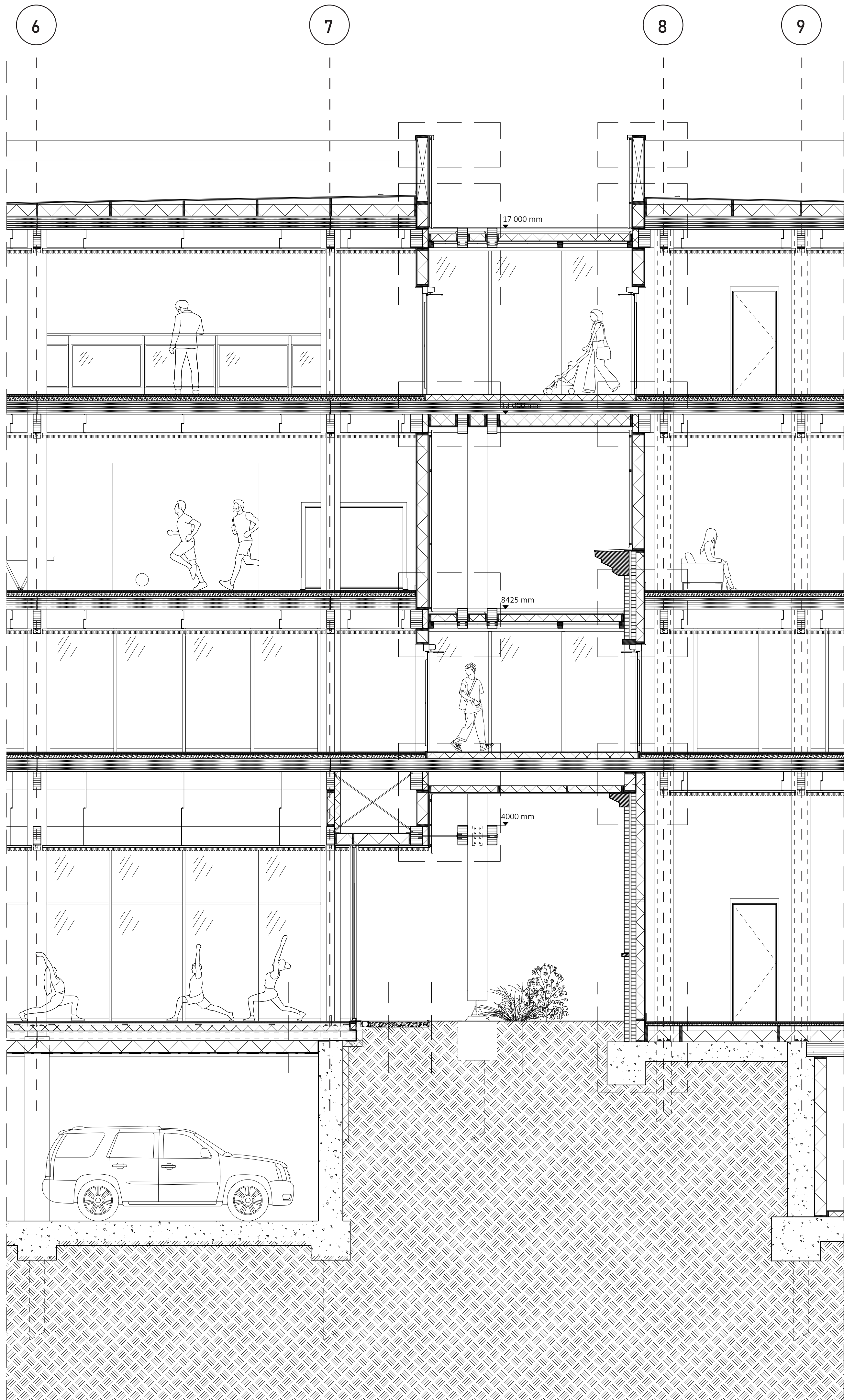
FACADE FRAGMENT SPORTS BUILDING 1:50



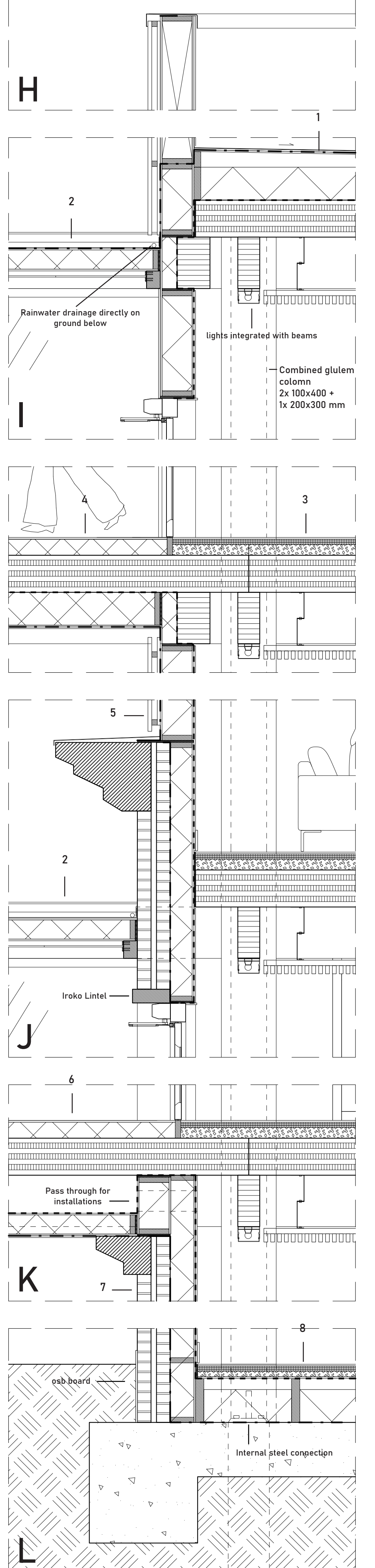
DETAILS 1:20



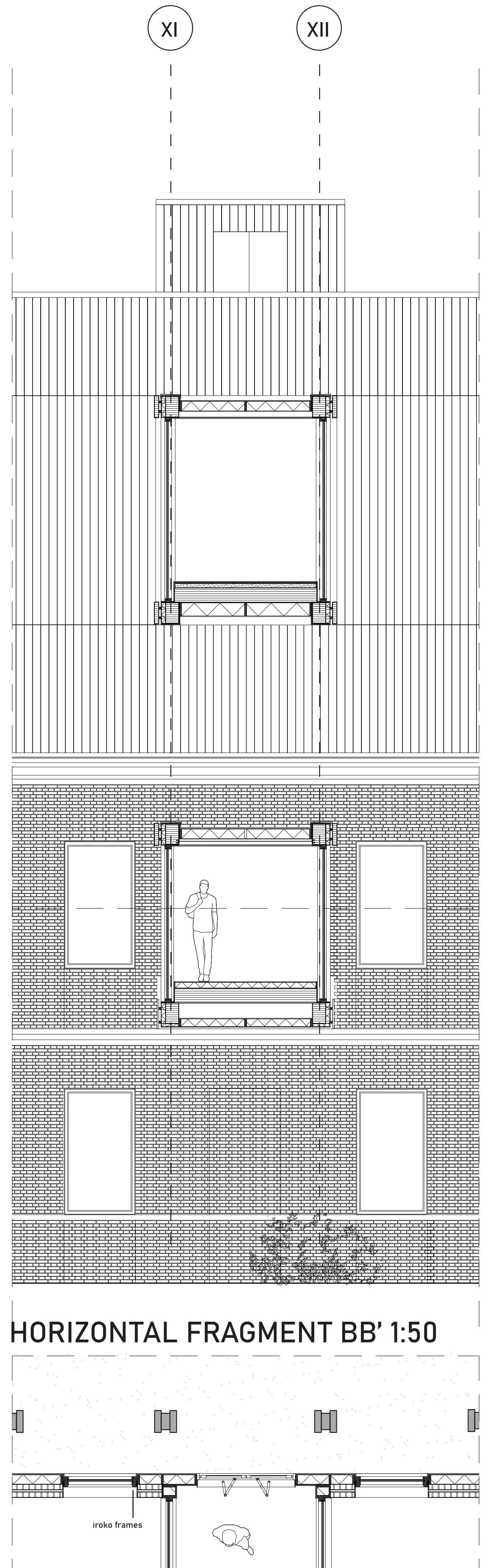
VERTICAL FRAGMENT 1:20



DETAILS 1:20



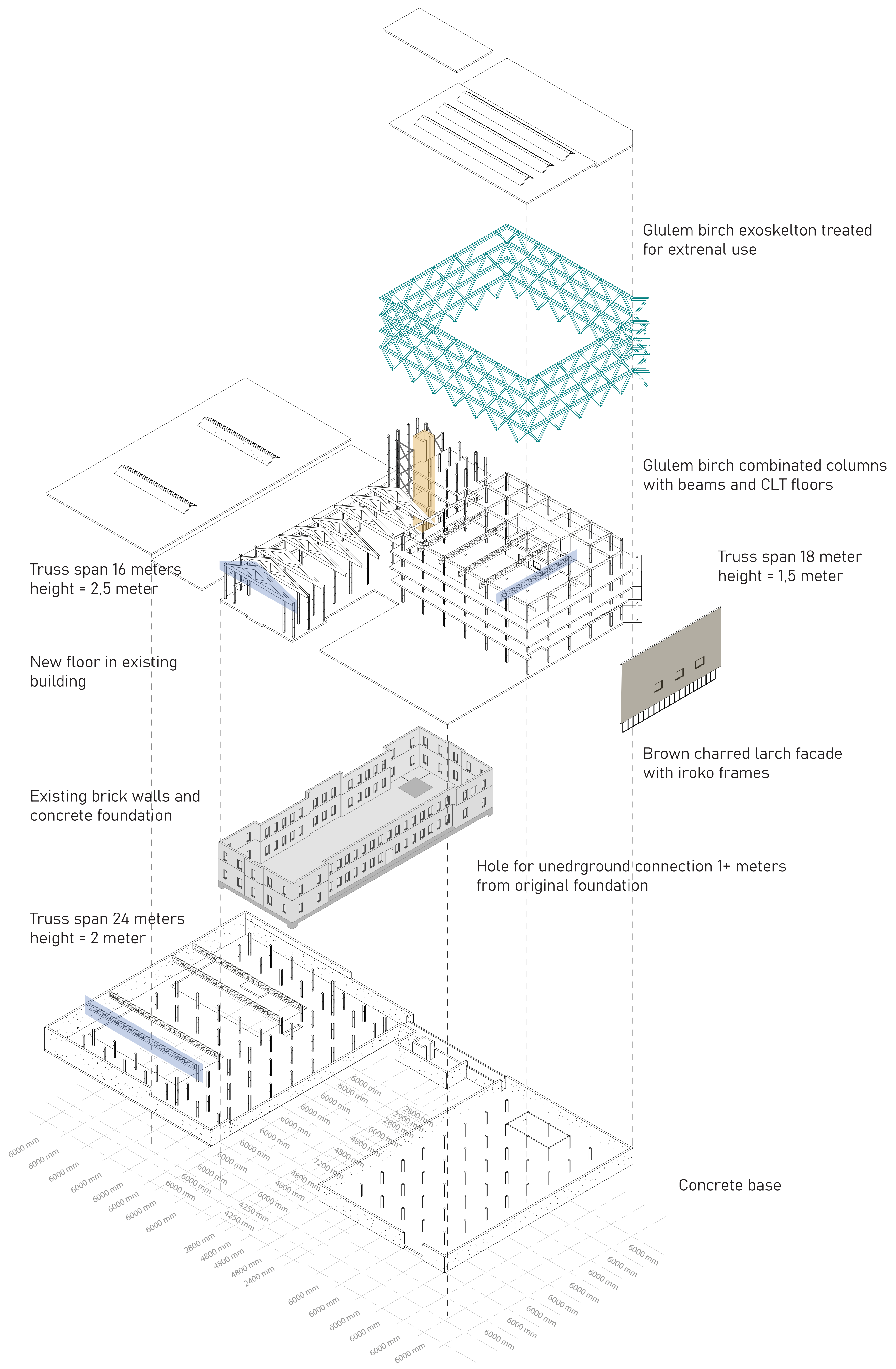
FACADE FRAGMENT 1:50



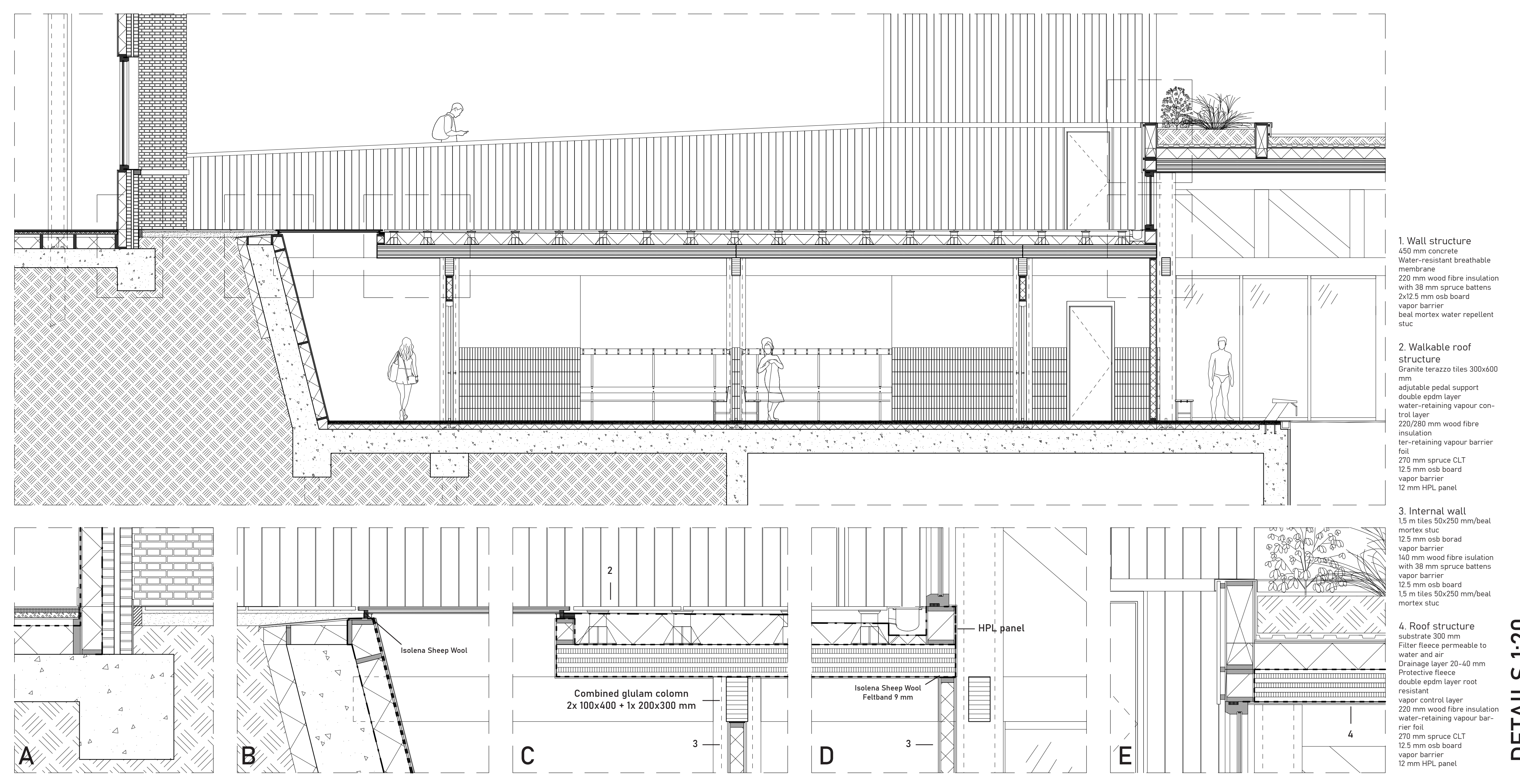
1. Roof structure
open mechanically fixed
2 x 12.5 mm osb board
waterproofing vapour permeable foil
220 mm wood fibre insulation with 38 mm spruce battens
Water vapour barrier foil
270 mm spruce CLT
Suspended ceiling 40x40 mm slats with 22x50 mm battens brown stained with linseed oil
2. Roof structure bridge
open mechanically fixed
12.5 mm Osb board
38 mm spruce battens
140 mm fibreboard
12 mm spruce plywood
3. Floor structure
3.5 mm marmoleum
2x 12.5 mm fermacell plaster fibre boards
10 mm wood fibreboard (softwood board) λ = 0.32 W/mK
60 mm dry leveling compound
270 mm spruce CLT
4. Floor structure bridge
3.5 mm marmoleum
12 mm hard fibreboard
80 mm wood fibreboard
270 mm spruce CLT
waterproofing vapour control layer
220 mm wood fibre insulation with 38 mm spruce battens
2x 2 x 12.5 mm osb board with water-retaining vapour control foil
5. Facade construction
145x28 mm charred dark brown larch
40x40 horizontal spruce battens
22x50 vertical spruce battens
12.5 osb board
220 mm wood fibre insulation with 38 mm spruce battens
12.5 osb board
12 mm spruce plywood
6. Wall structure
145x28 mm charred dark brown larch
12 mm plaster fibre board
12.5 mm osb board
220 mm wood fibreboard with 38 mm spruce battens
12.5 mm osb board
12 mm spruce plywood
7. Bridge floor structure II
3.5 mm marmoleum
12 mm plaster fibre board
80 mm wood fibreboard
270 mm spruce CLT
water-retaining vapour control layer
12.5 mm osb board
140 mm wood fibreboard with 38 mm spruce battens
2x 2 x 12.5 mm osb board with water-retaining vapour barrier foil
8. Construction overhang
water-repellent vapour control foil
12.5 mm osb board
220 mm wood fibre insulation with 38 mm spruce battens
2x 12.5 mm osb board with water-retaining vapour barrier foil
9. Sports floor construction
4 mm marmoleum sports
2x 12 mm osb boards
10 mm natural rubber granules
109x22 battens
140 mm wood fibre insulation
200 mm hollow-core slab floor

1. Roof structure
open mechanically fixed
2 x 12.5 mm osb board
waterproofing vapour permeable foil
220 mm wood fibre insulation with 38 mm spruce battens
Water vapour barrier foil
270 mm spruce CLT
Suspended ceiling 40x40 mm slats with 22x50 mm battens brown stained with linseed oil
2. Roof structure bridge
open mechanically fixed
12.5 mm Osb board
38 mm spruce battens
140 mm fibreboard
12 mm spruce plywood
3. Floor structure
3.5 mm marmoleum
2x 12.5 mm fermacell plaster fibre boards
10 mm wood fibreboard (softwood board) λ = 0.32 W/mK
60 mm dry leveling compound
270 mm spruce CLT
Suspended ceiling 40x40 mm slats with 22x50 mm battens brown stained with linseed oil
4. Floor structure bridge
3.5 mm marmoleum
12 mm hard fibreboard
80 mm wood fibreboard
270 mm spruce CLT
waterproofing vapour control layer
220 mm wood fibre insulation with 38 mm spruce battens
2x 2 x 12.5 mm osb board with water-retaining vapour control foil
5. Facade construction
145x28 mm charred dark brown larch
40x40 horizontal spruce battens
22x50 vertical spruce battens
12.5 osb board
220 mm wood fibre insulation with 38 mm spruce battens
12.5 osb board
12 mm spruce plywood
6. Bridge floor structure II
3.5 mm marmoleum
12 mm plaster fibre board
80 mm wood fibreboard
270 mm spruce CLT
water-retaining vapour control layer
12.5 mm osb board
140 mm wood fibreboard with 38 mm spruce battens
2x 2 x 12.5 mm osb board with water-retaining vapour barrier foil
6. Wall structure
Existing brick
2x 30 mm with 40 mm cavity
water-retaining vapour control layer
170 mm wood fibreboard with 38 mm spruce battens
12.5 mm osb board
water-retaining vapour barrier foil
12 mm spruce plywood
8. Floor construction
3.5 mm marmoleum
2x 12.5 mm fermacell plaster fibre boards
10 mm wood fibreboard (softwood board) λ = 0.32 W/mK
60 mm dry leveling compound
water-retaining vapour control layer
18 mm osb board
220 mm wood fibre insulation with 270x38 mm spruce battens
water-retaining vapour control layer

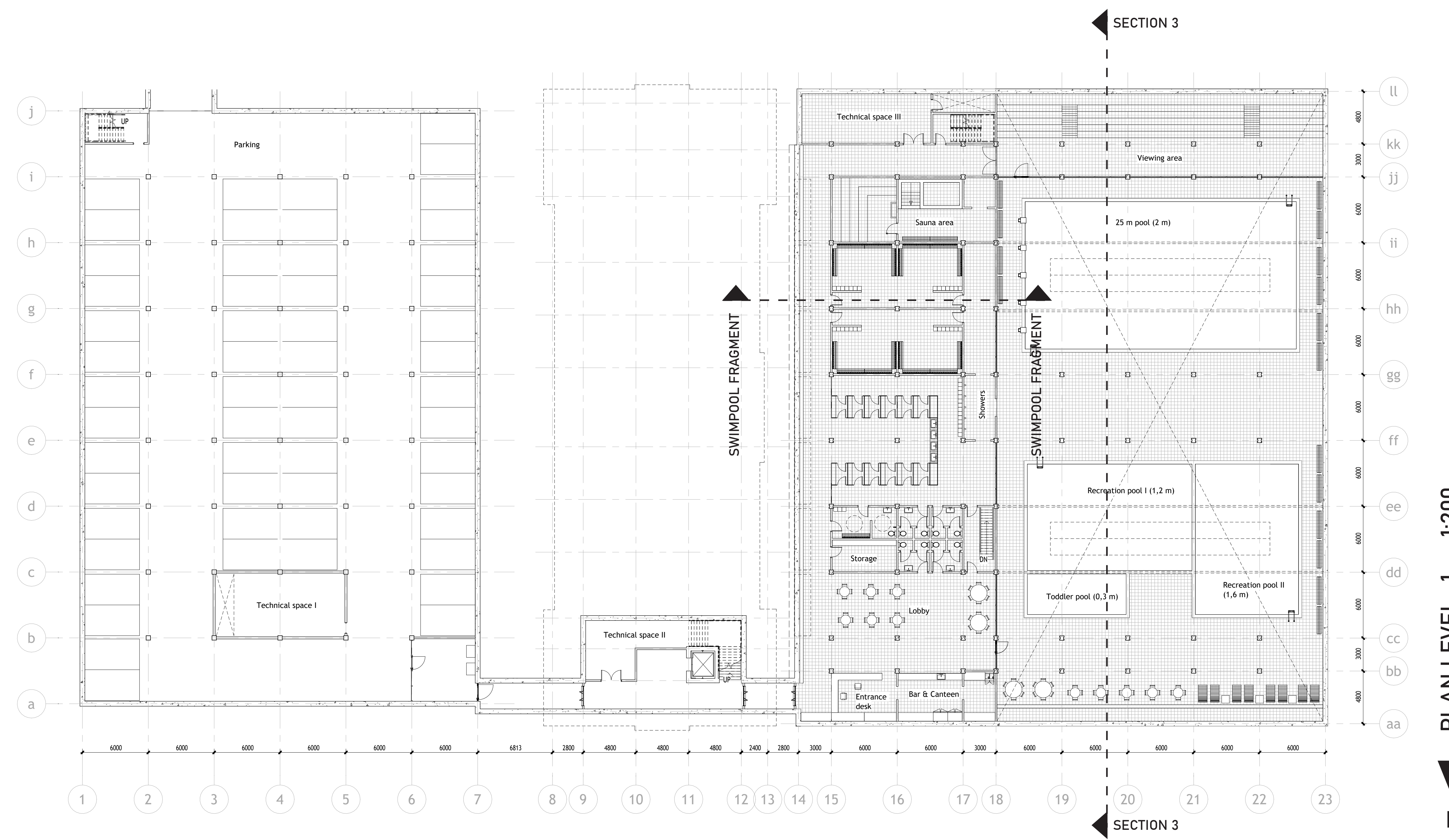
EXPLODED AXO CONSTRUCTION | LAYERS AND MATERIALS



SWIMPOOL FRAGMENT 1:50

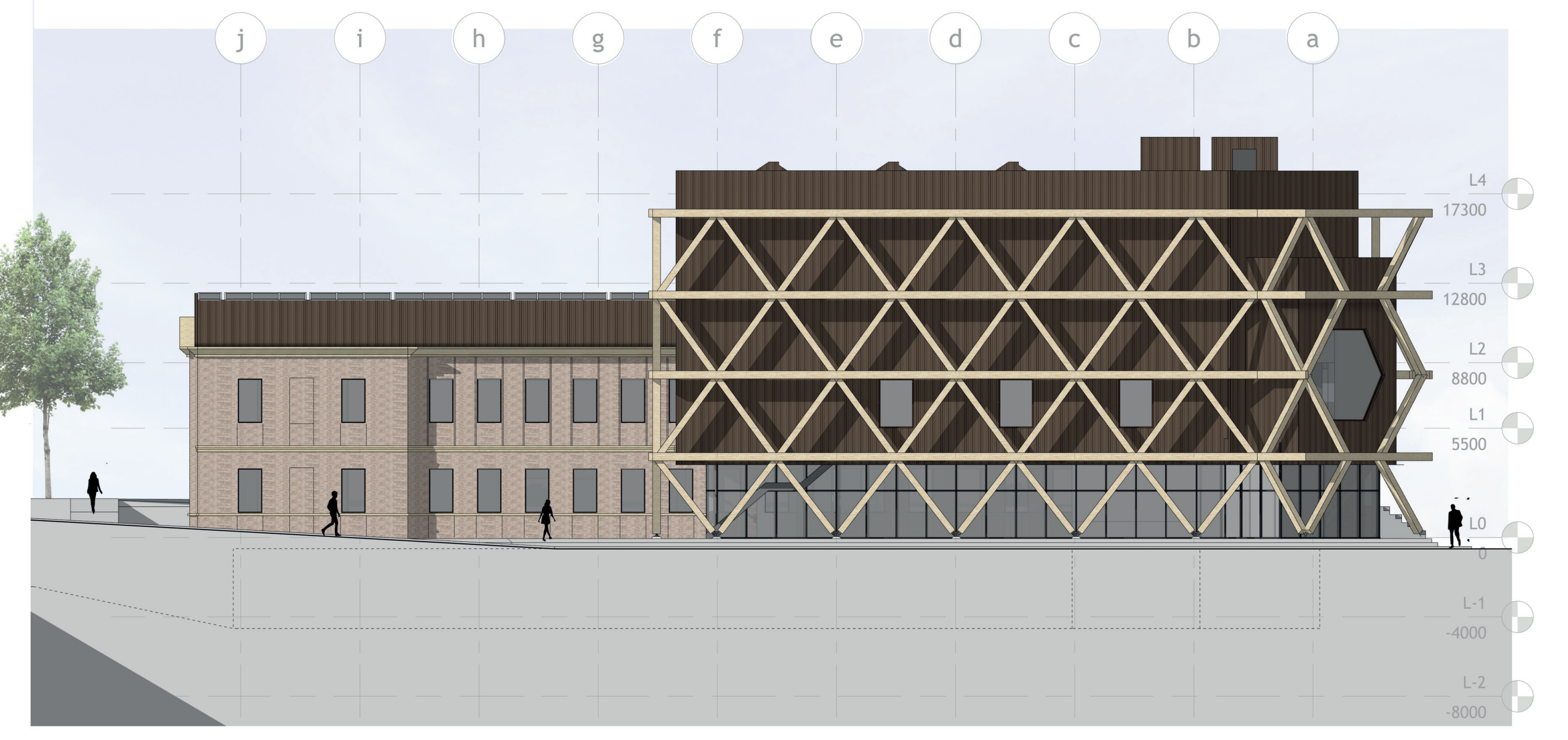


DETAILS 1:20

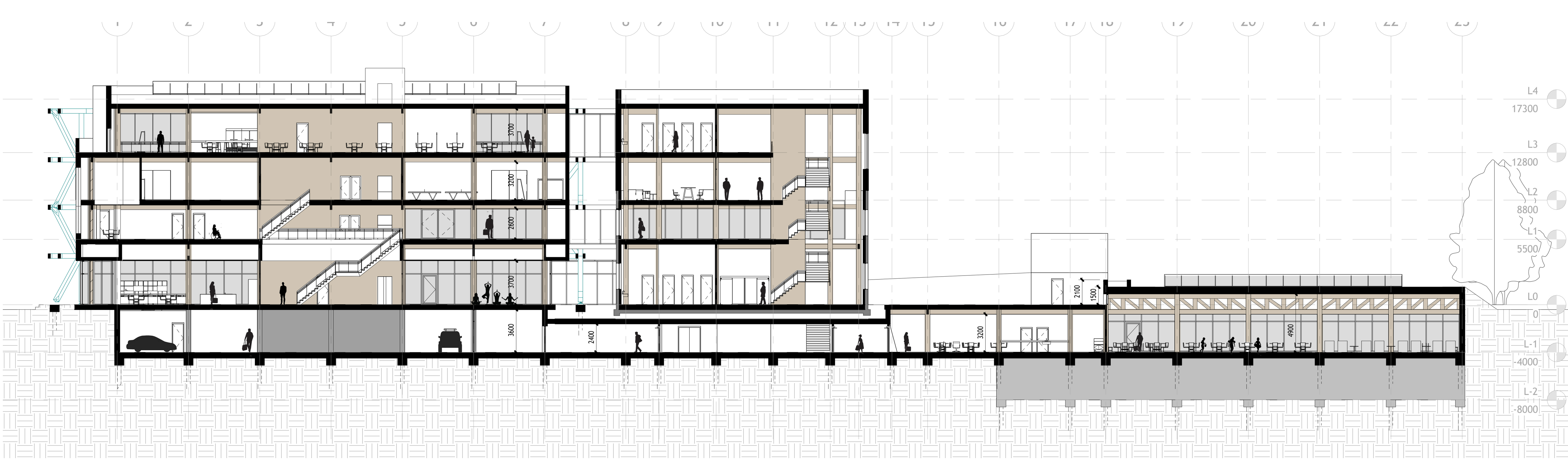




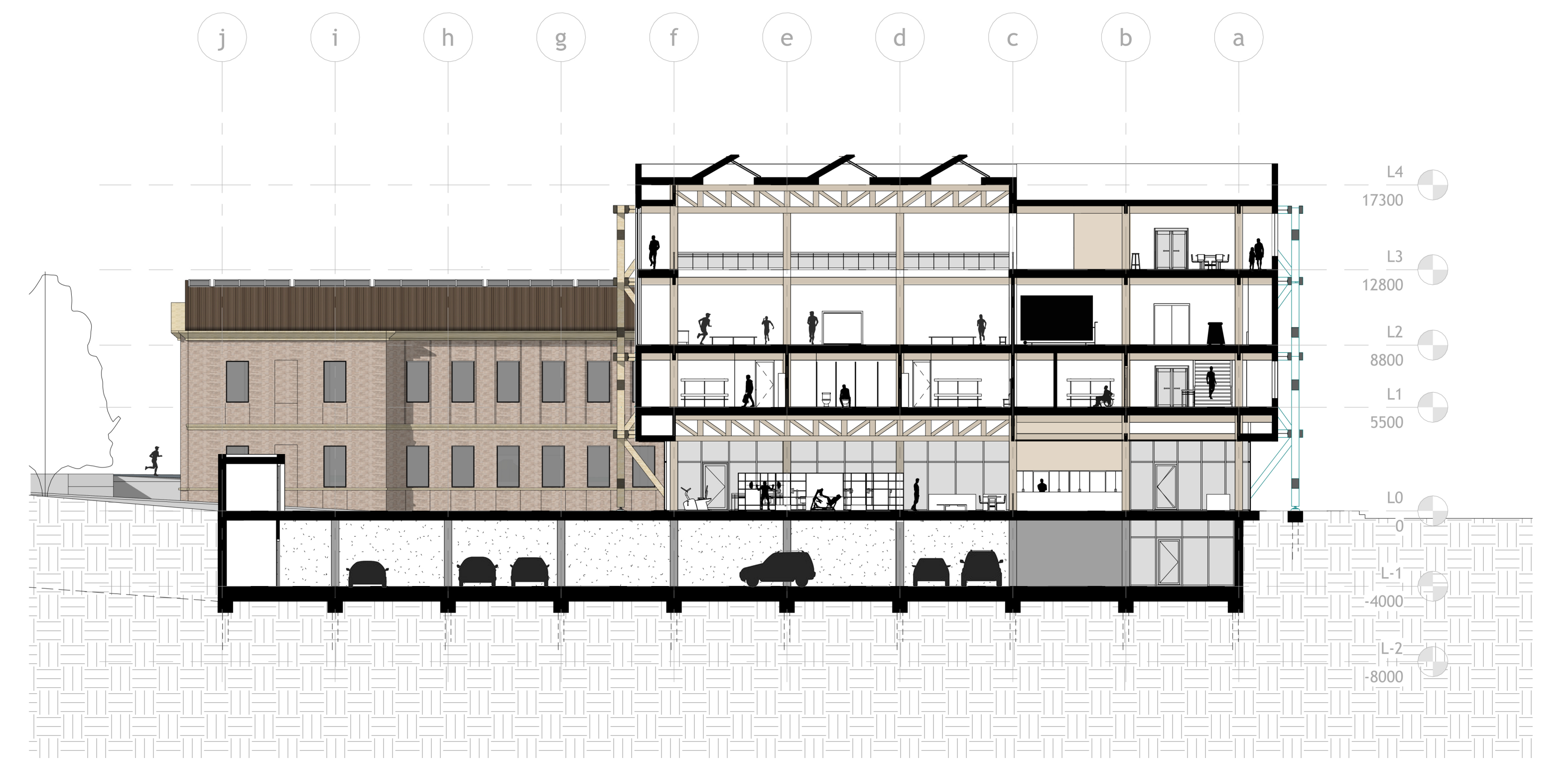
SOUTH ELEVATION 1:200



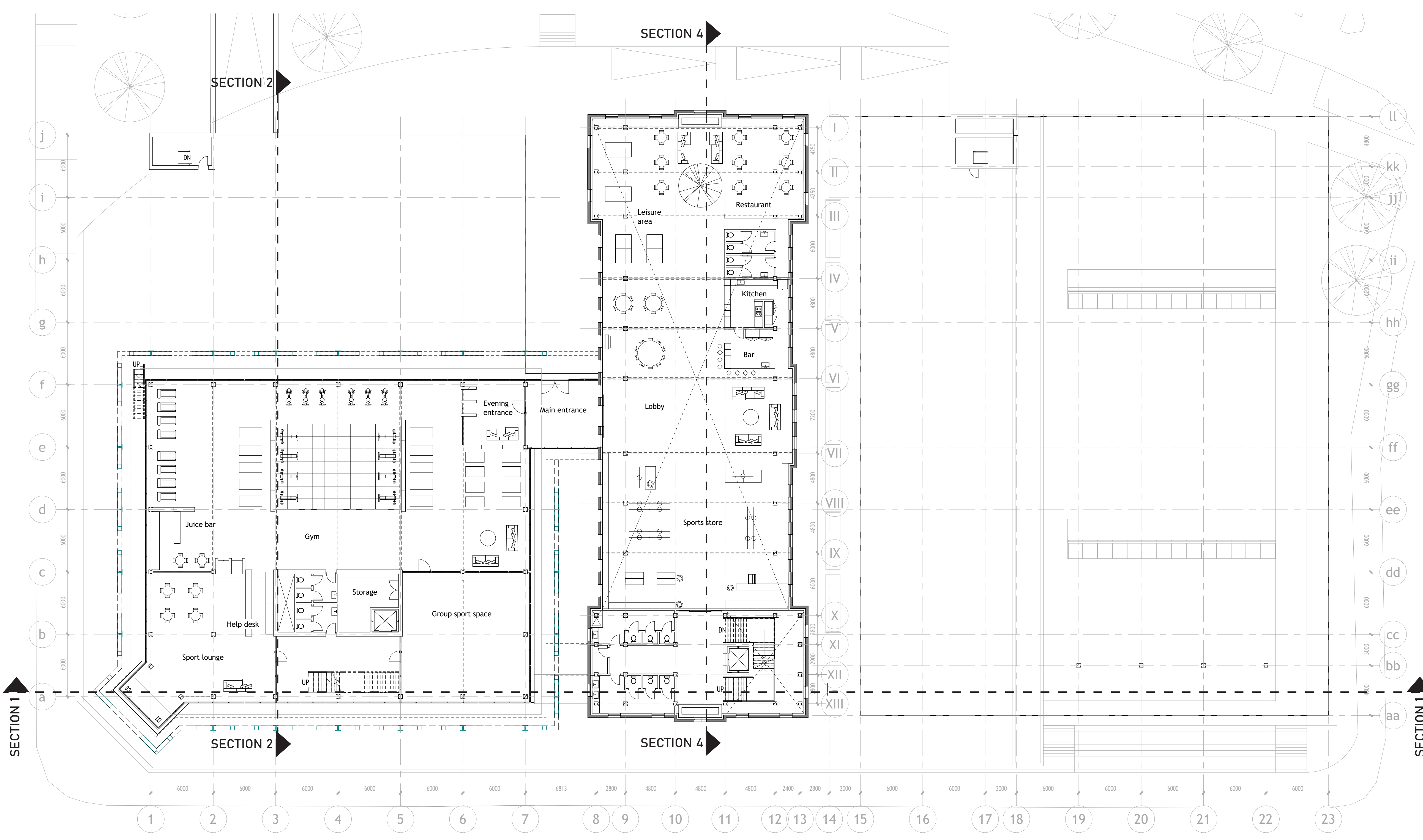
EAST ELEVATION 1:200



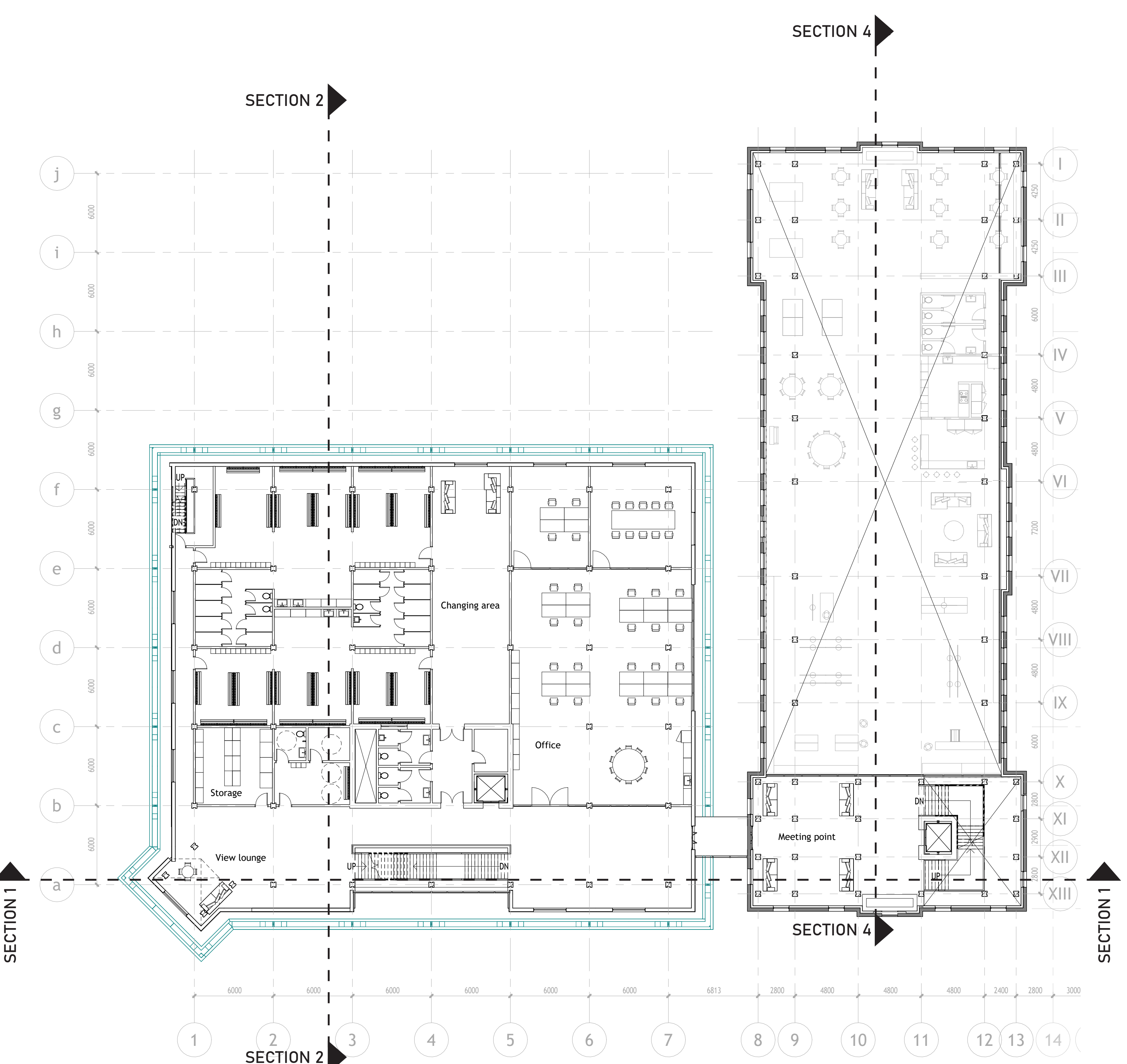
SECTION 1 1:200



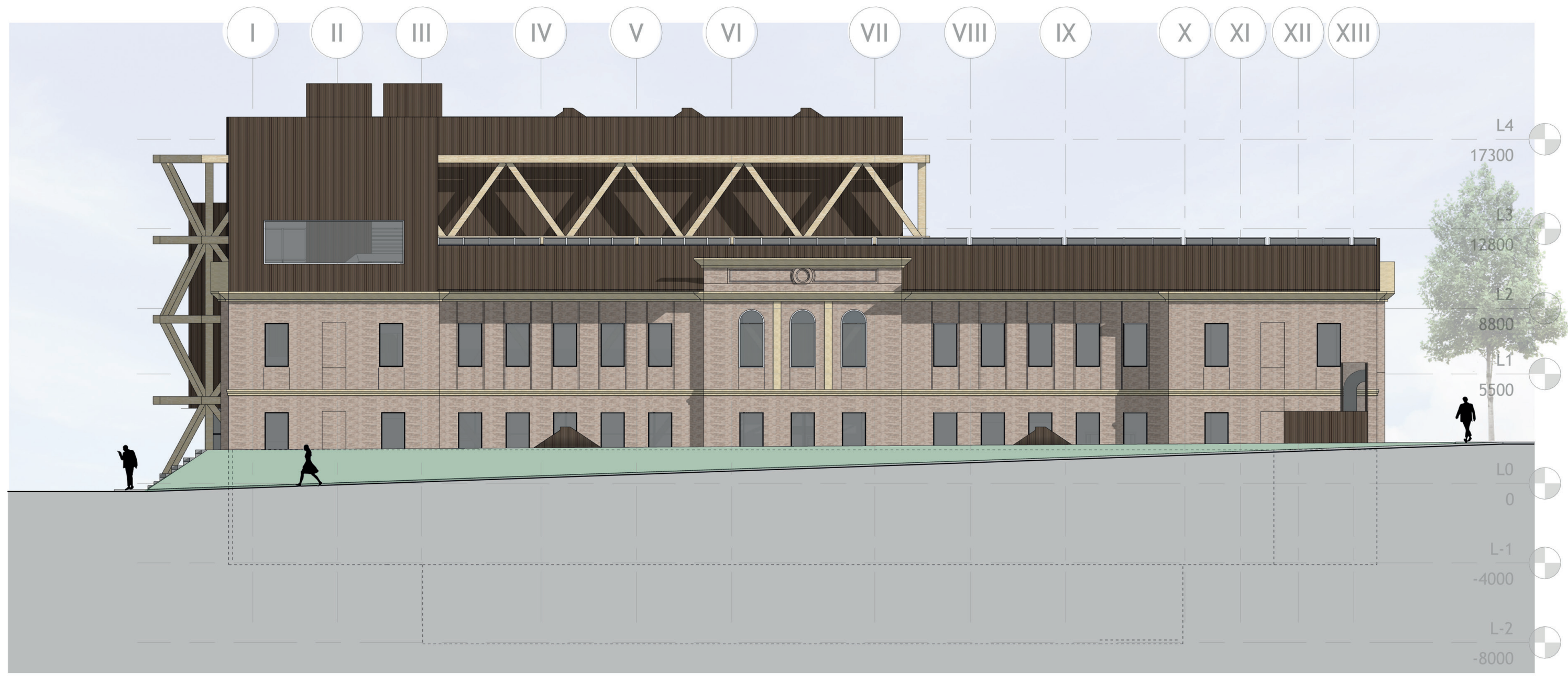
SECTION 2 1:200



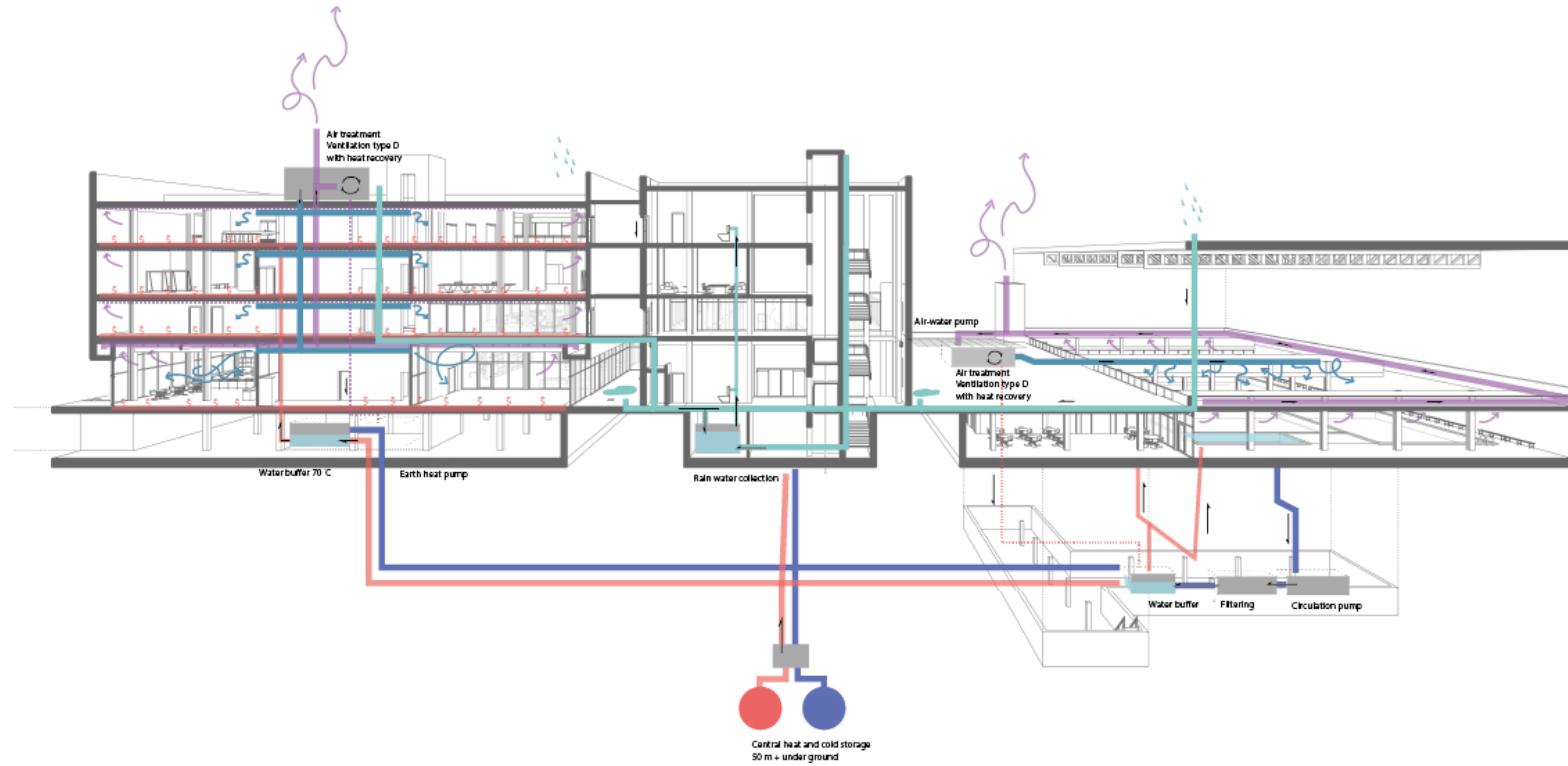
PLAN LEVEL 0 1:200



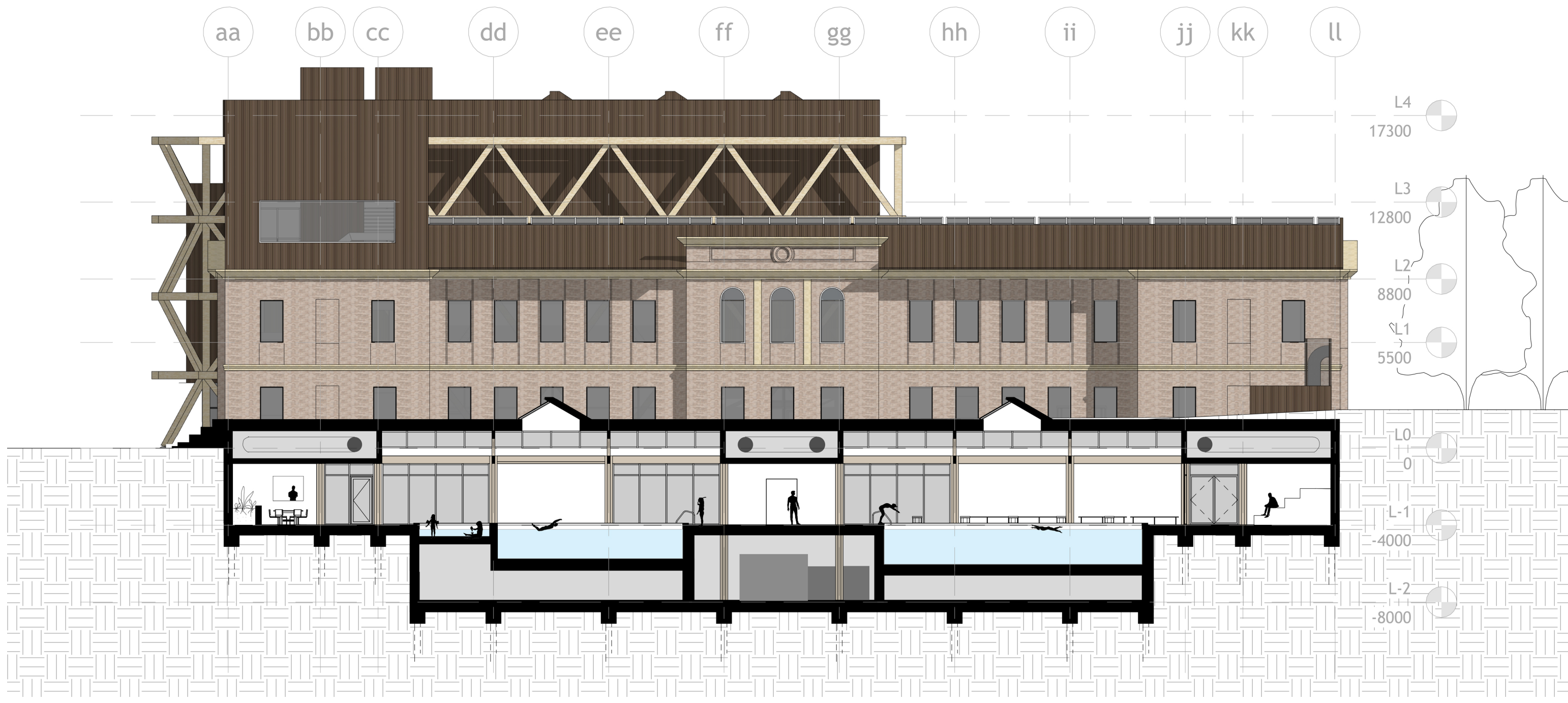
PLAN LEVEL 1 1:200



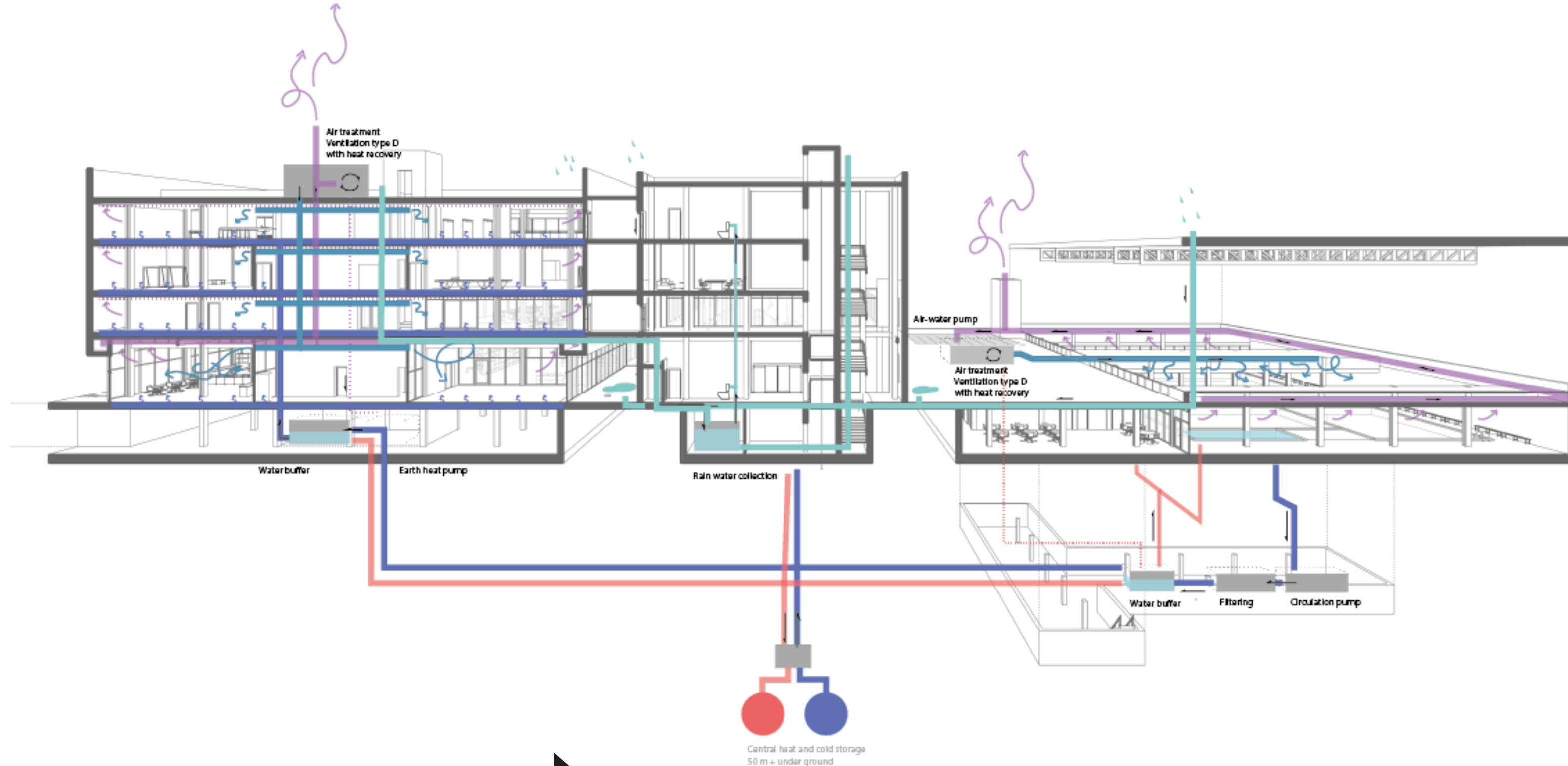
WEST ELEVATION 1:200



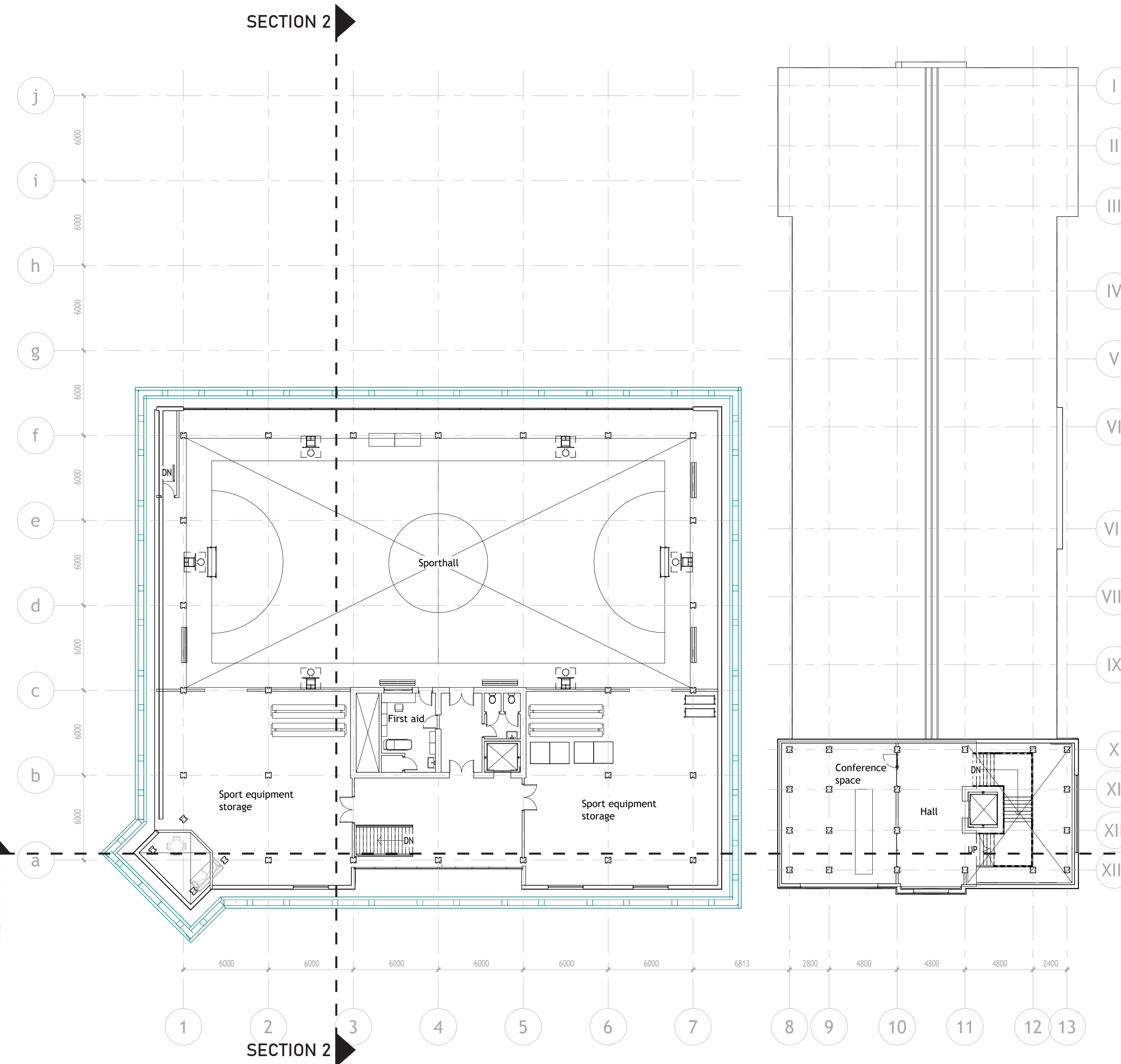
CLIMATE SECTION WINTER



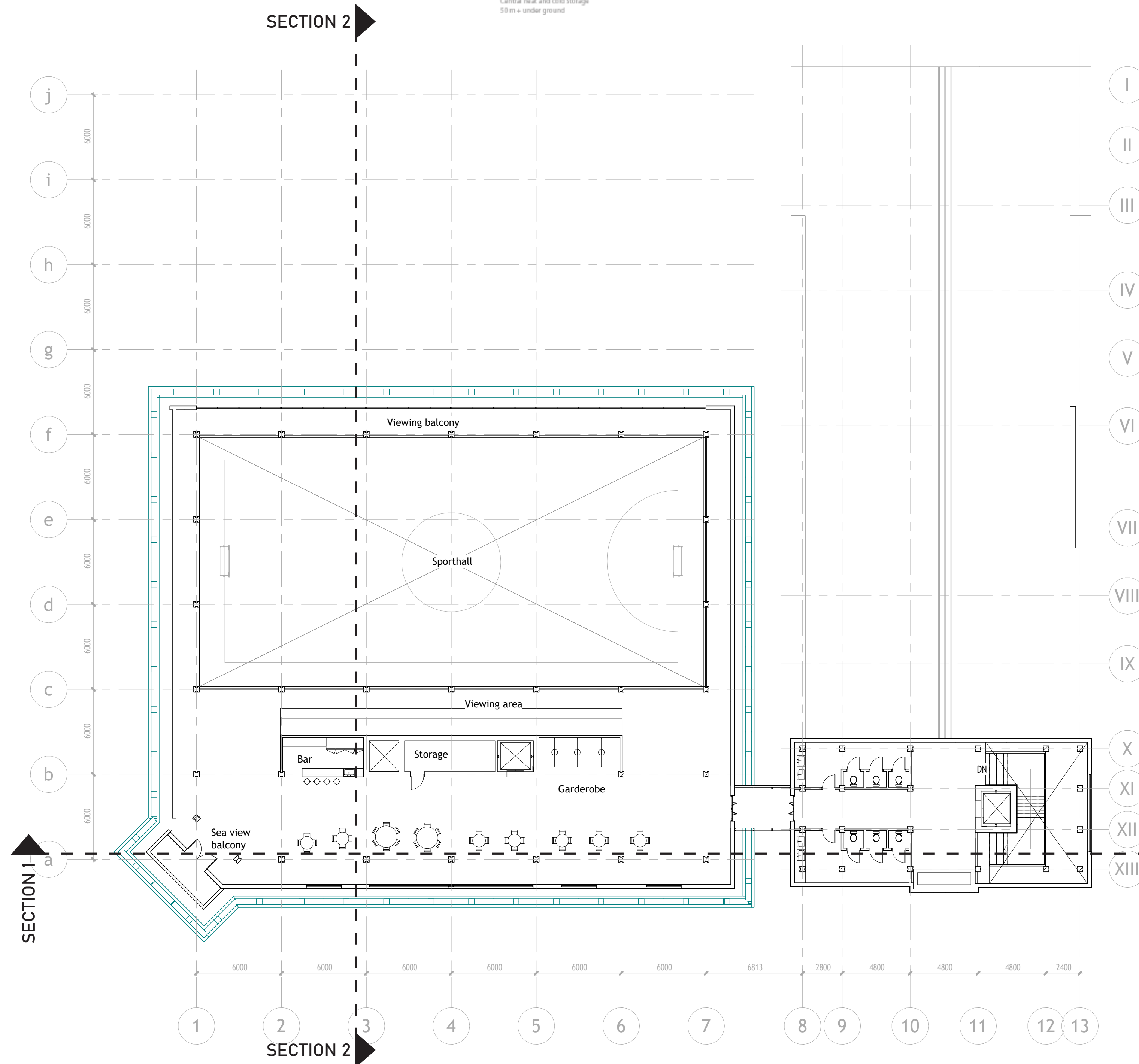
SECTION 3 1:200



CLIMATE SECTION SUMMER



PLAN LEVEL 2 1:200



PLAN LEVEL 3 1:200