

# M HKA museum of co-existence

**co-existence** noun [ U ] (also coexistence)

the fact of living or existing together at the same time or in the same place

*Cambridge Dictionary*





1) Co-existence of **Museum & City**

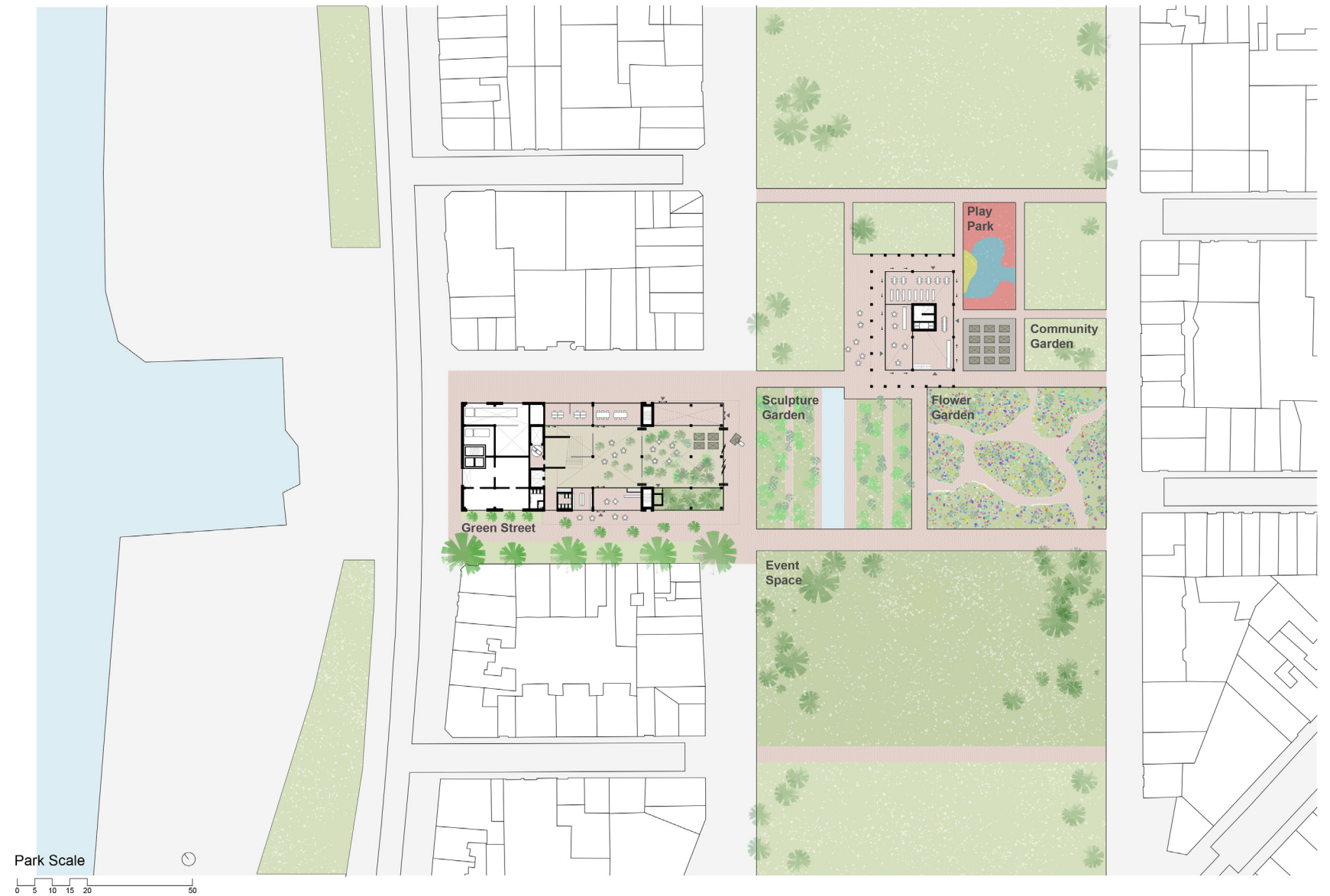
2) Co-existence of **Humans & Non-Humans (Plants and Animals)**

***Put in own words:** “How can the museum become a truly open museum, a place for many? Not only for museum visitors but also for non-museum visitors like the inhabitants of the city, and also for non-humans: plants and animals?”*



### Museum of Co-existence in Plan

- Museum Buildings work in synergy with the adjacent public gardens in the park
- For maximum engagement with the neighbourhood and the city.
- Using the gardens to invite both humans and non-humans into the museum.





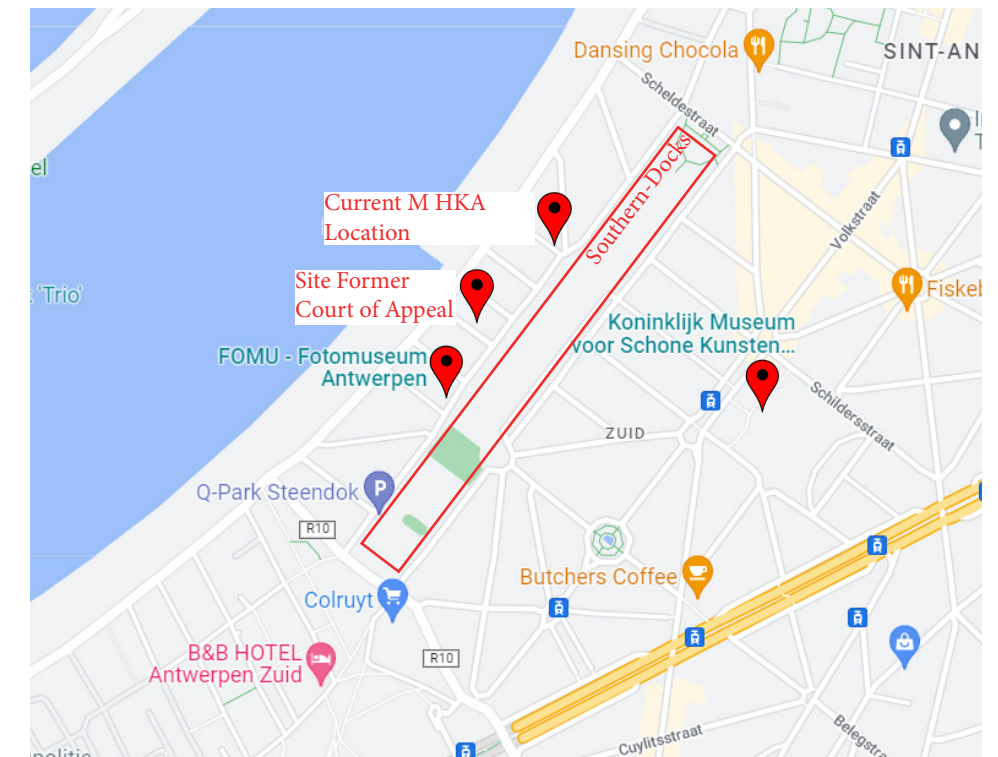


### Located in Antwerp

- Founded in 1985
- Funded and owned by the Flemish Community
- Neighbourhood 't Zuid
- Along the Scheldt river
- Museum Neighbourhood FOMU & KMSKA
- Current M HKA and Future Site (Courthouse Building) in close proximity
- Both introverted buildings







### Future Site

- Former harbour area “Southern Docks”
- Court of Appeal built on former Lock
- “Southern Docks” is transformed into a city park which is a big potential

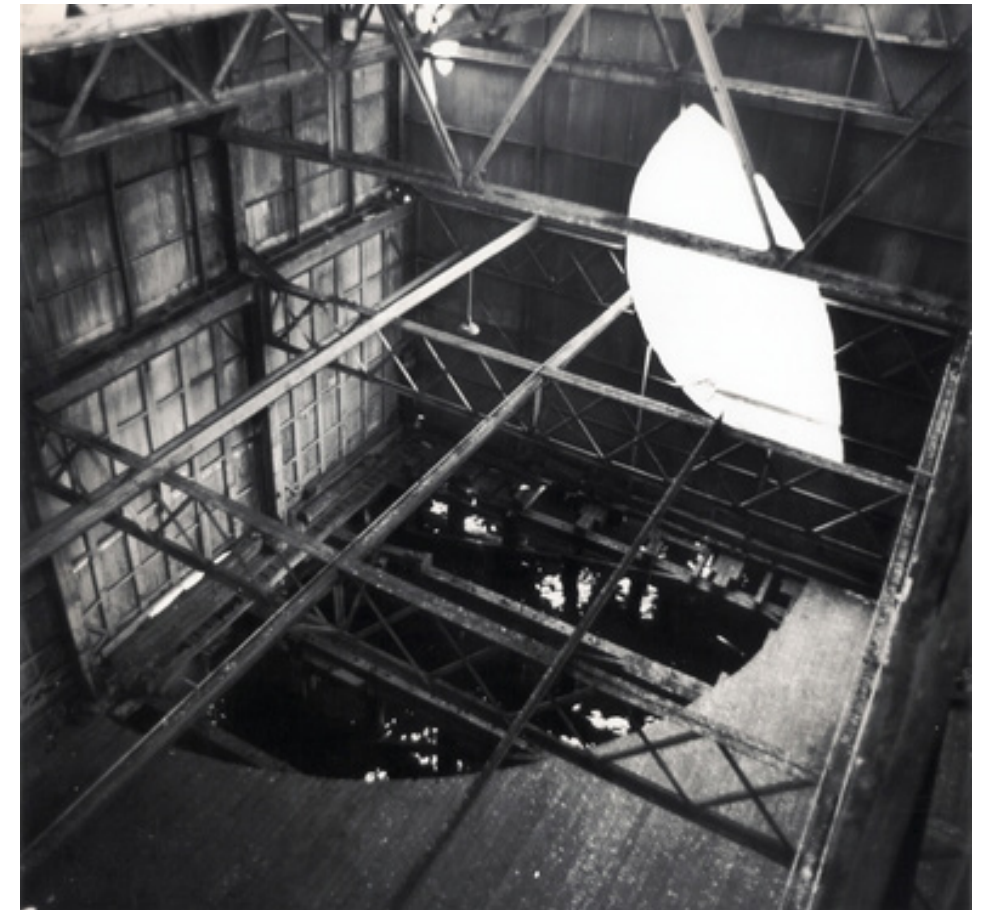


#### Anti-Museum History **M HKA**

- Origins Office Baroque Gordon Matta-Clark (cutting on former office building)
- Anti-museum with foundation ICC (International Cultural Centre) experimental public institution for contemporary (video) art
- Museum in Converted Former Grain Silo

#### Incorporating the qualities of **'Anti-Museum' with my 'museum of co-existence'**

- Very rich public use (by inviting both humans and non-humans inside the museum)
- Engagement with public life
- Informality



*Office Baroque: from the Gordon Matta-Clark Ensemble, M HKA*



### MoMA New York - Civil Rights Movements

- Efforts for inclusivity
- Organising activities, events, programs inside the city.



36 Children standing with Betty Blayton-Taylor (top, center) at the entrance to the Children's Art Carnival, Harlem School of the Arts, 1969. VDA, IV.A.v.1, MoMA Archives, New York





## Antwerpen telt voor het eerst meer inwoners mét dan zonder migratieachtergrond

25/02/2019 om 12:51 door bbd



☁ 10°C ▲ 34km 📶 0,03%

MEEST RECENT • MEEST GELEZEN

1. Deze Belgische scholen pakten het lage ...
2. Vrees dat 8.000 jongeren in beroepsonder...
3. Uit het hart | Ik ontdekte wat kinderen wél ...
4. Leerkracht (27) van school in Blankenberge...
5. Rosa Merckx van Liefmans, de eerste vr...

**Volledig overzicht >**

### NIET TE MISSEN

Geen abonnee? Lees 5 plus-artikels **gratis** >



Komende vijf jaar breken bijna zeker hitterecord



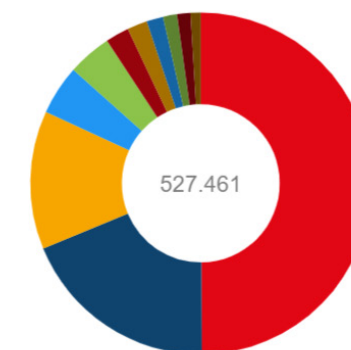
Foto: Photo News

Voor het eerst zijn er in Antwerpen meer inwoners mét dan zonder migratieachtergrond. Dat blijkt uit een demografisch rapport van de stad.

### Aantal inwoners naar herkomst

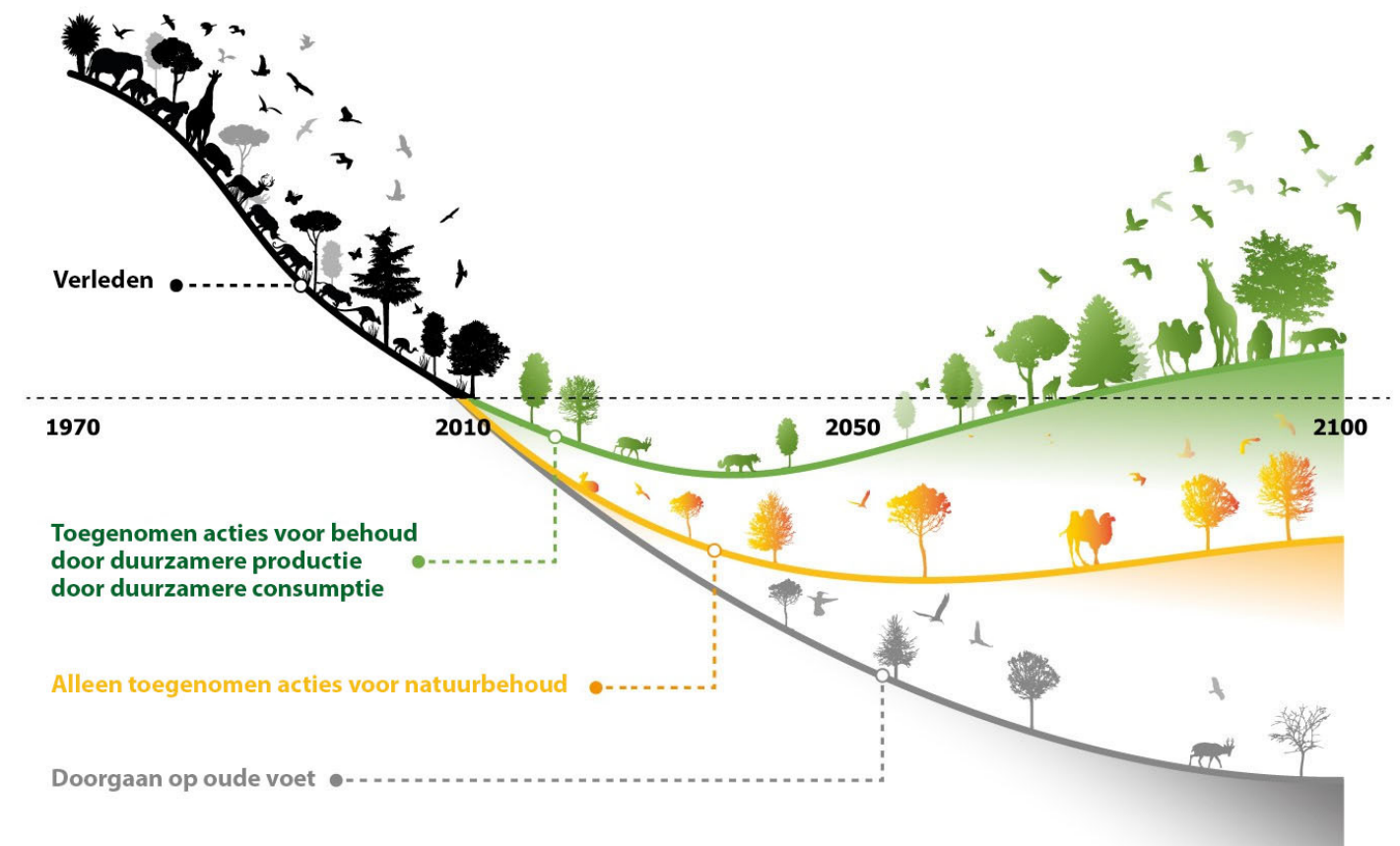
(rekening houdend met herkomst ouders)

België Marokko Nederland Turkije Polen (Voormalig) Joegoslavië  
 Rusland Spanje Afghanistan Irak Overige



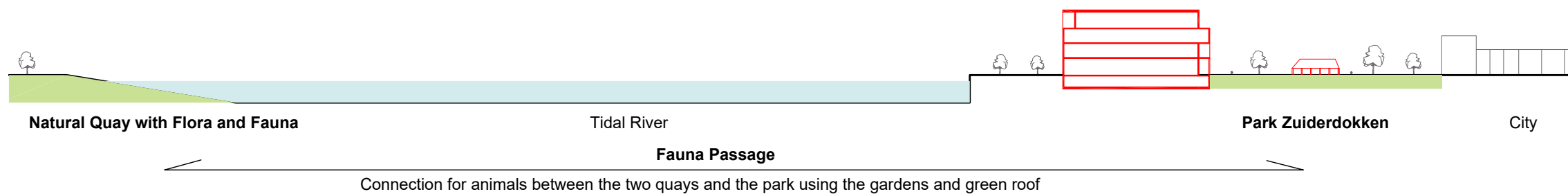
### Urban Ecosystem

- Not only co-existence between humans is important
- Also a necessity for co-existence between humans and non-humans
- Less space for plants and animals due to densification
- Less nesting places in buildings due to higher insulation norms



*Ecologist Robbert Snep  
Wageningen University & Research.*





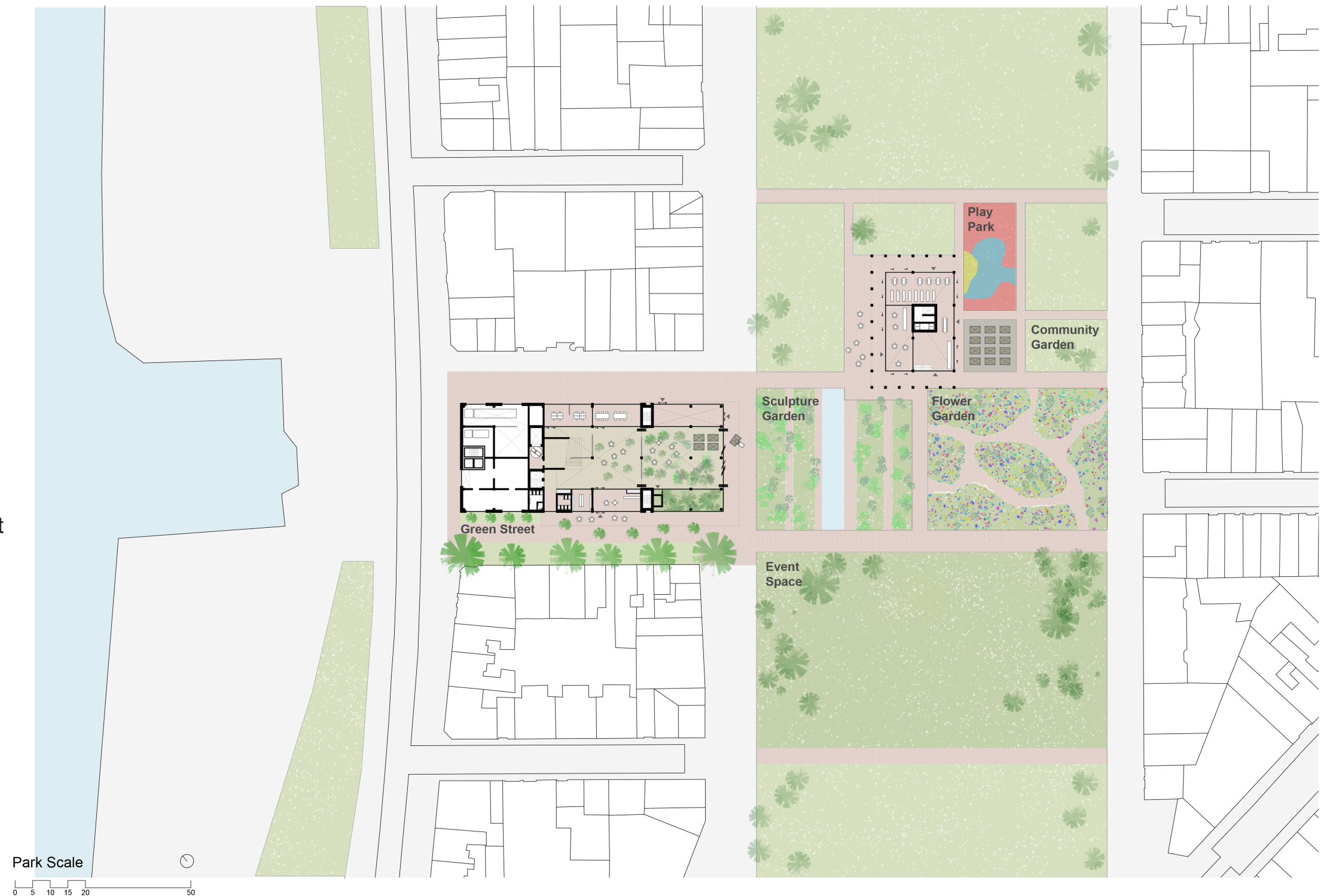
Using the notion of Co-existence as a metaphor for **the awkward situation of Flanders & Wallonia in Belgium**

as a reaction against the current ideas to rebrand M HKA (Museum of Contemporary Arts Antwerp) to VMHK (Flemish Museum of Contemporary Art) further reinforcing the division of the Belgian population.



## Dispersed Museum Synergy: Park & Buildings

1. Outdoor Forum
  2. Pavilion in the Park
  3. Building on the Plot (with winter garden as a continuation of this outdoor forum)
- Demolishing Court of Appeal, as it does not align with my wishes for openness, limiting factor.



## Synergy

Nesting Place

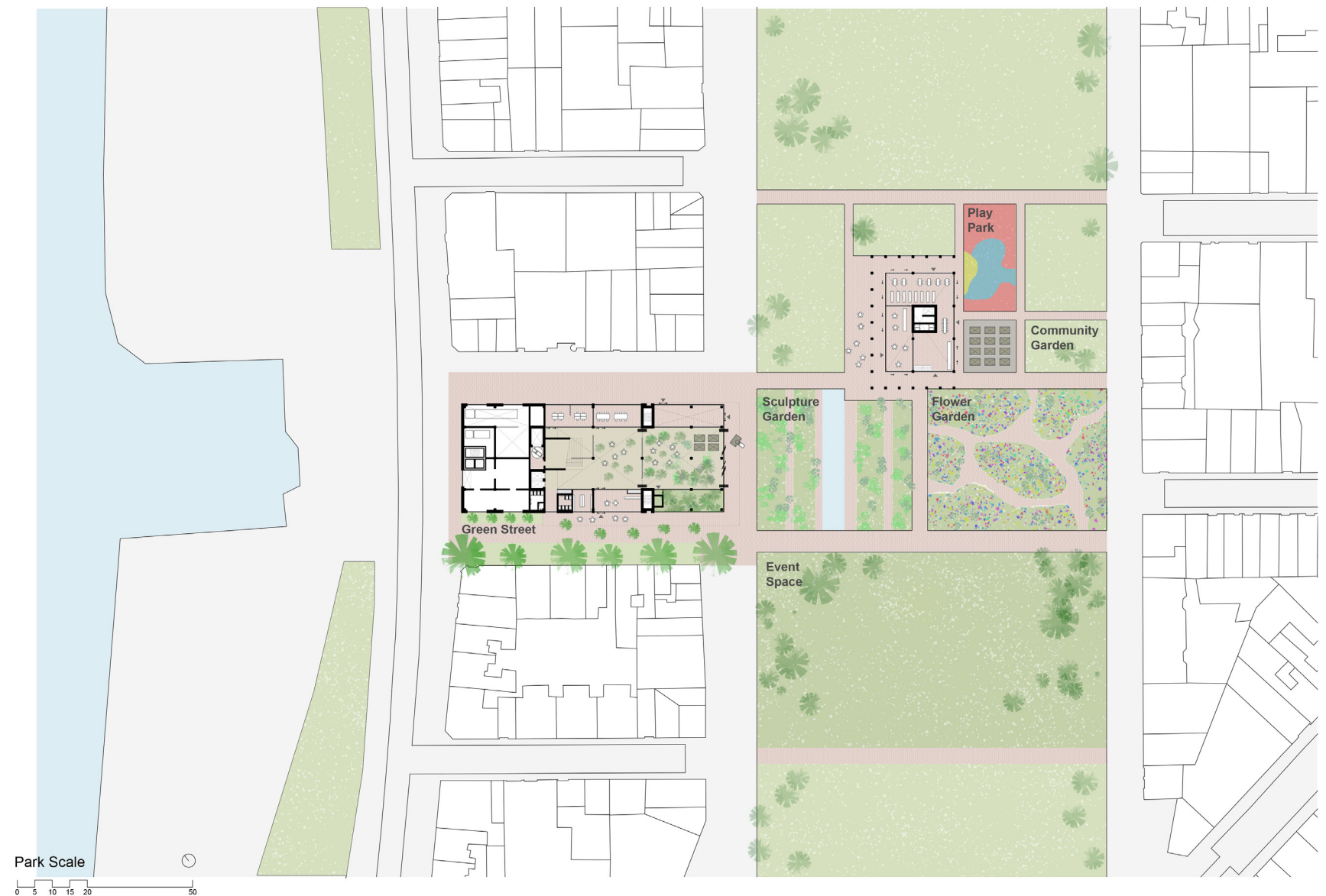
Habitat

### Outdoor Forum

- Five different gardens cater to different groups of people
- Together attract a diverse group of people.
- Co-ownership and responsibility by M HKA and residents of the neighbourhood.

1. **Sculpture Garden** - Casual use
2. **Flower Garden** - Plants which attract animals, insects, bees, birds, educational trips from communal schools, interaction with kids
3. **Community Garden** - Collectively maintained garden with a social function. For people from 't Zuid from all layers of society to gather.
4. **Play Field** - Outdoor Play Area for kids and families
5. **Event Space** - Multifunctional strip of grass for special events, outside movies, plays.

**Green Street** to anchor the M HKA on the Waterside





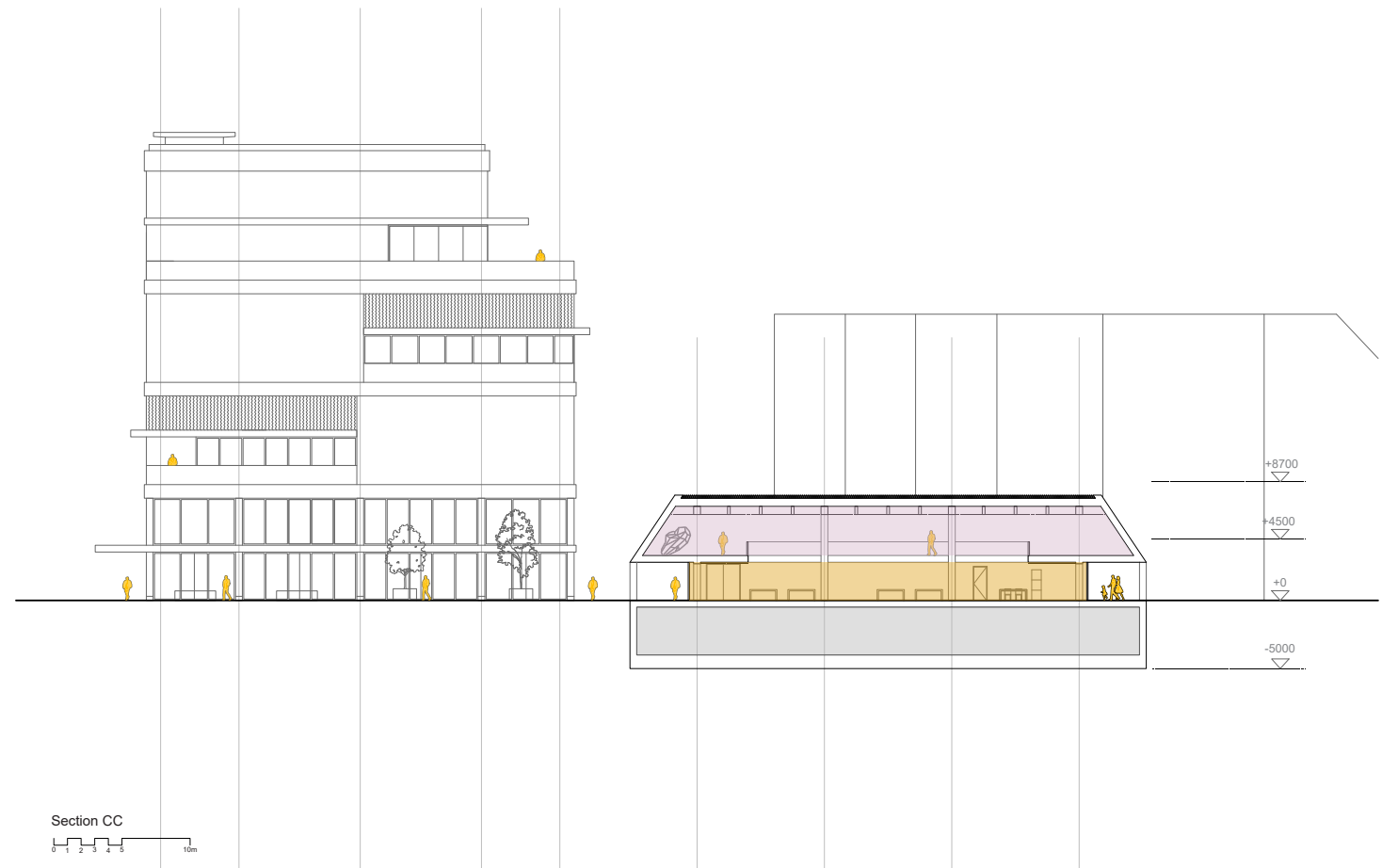


**Outdoor Forum Use:** Standing in the Outdoor Forum and Looking at the Pavilion. Place for Humans and Non-Humans. Synergy between park and buildings with the cafe in the pavilion, the terrace in the park and people sitting in front of the fountain. Both museum visitors and non-museum visitors using, enjoying and working in the park.



### Pavilion in the Park

- **Ground Floor** - Public Functions and Public Art (hanging or on open mezzanine level) People come in contact with art in a spontaneous way



### Building on the Plot

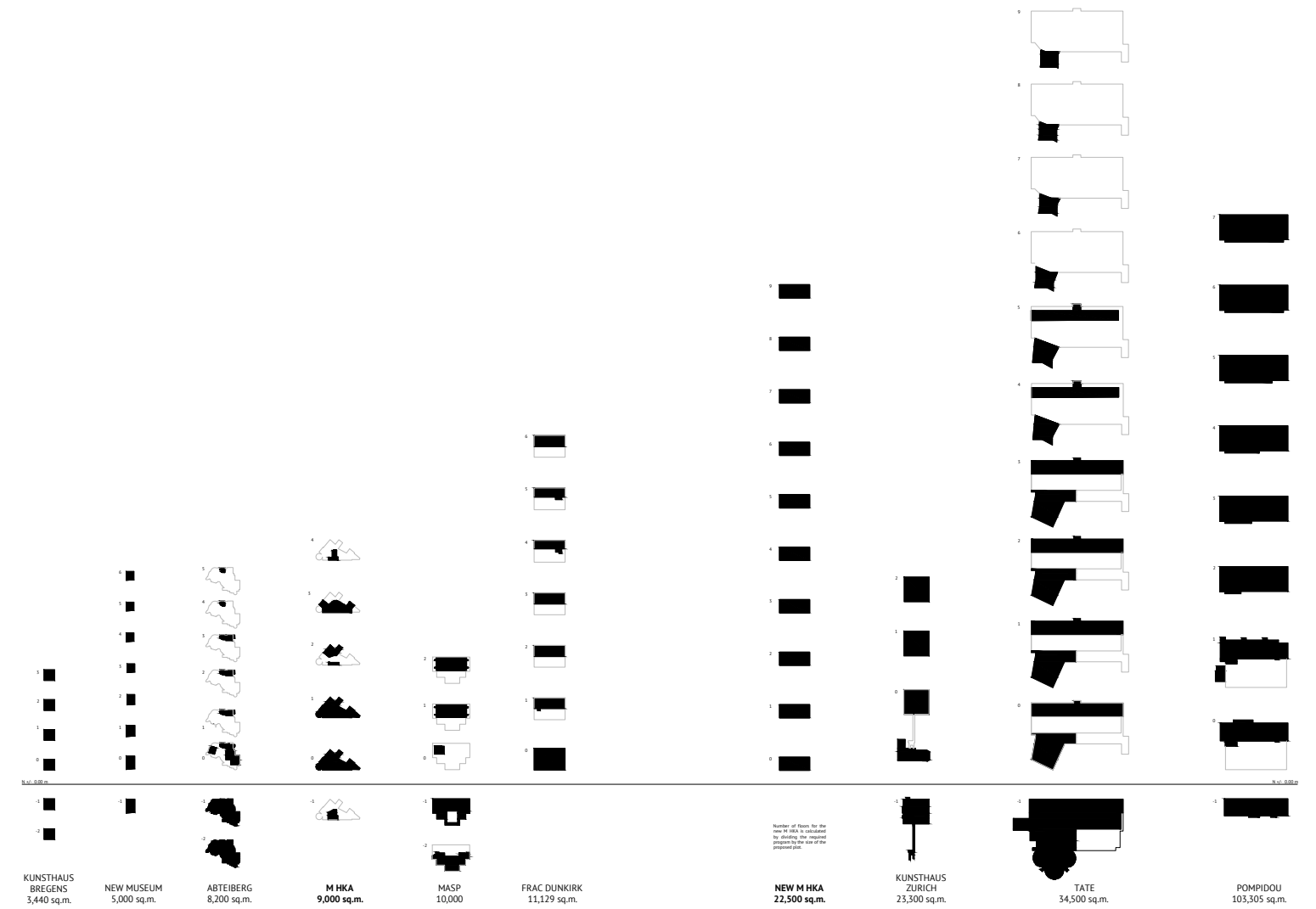
- **Basement** - Back Office, Technical Rooms
- **Ground Floor** - Public Ground Floor, Winter Garden & Offices
- **Top Floors** - Art Spaces





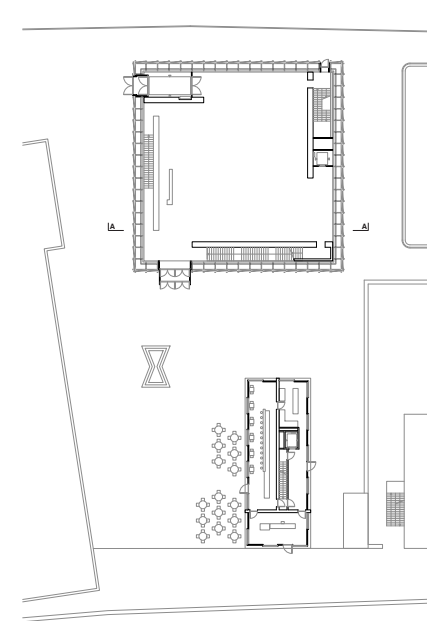
### Collective Precedents Study

- Program of Requirements of M HKA compared to other contemporary art museums
- M HKA as a “tower” if brief was followed 100%
- Not in line with the concept



### Kunsthhaus Bregenz, Peter Zumthor

- Dispersed Museum
- Non public main building = difference

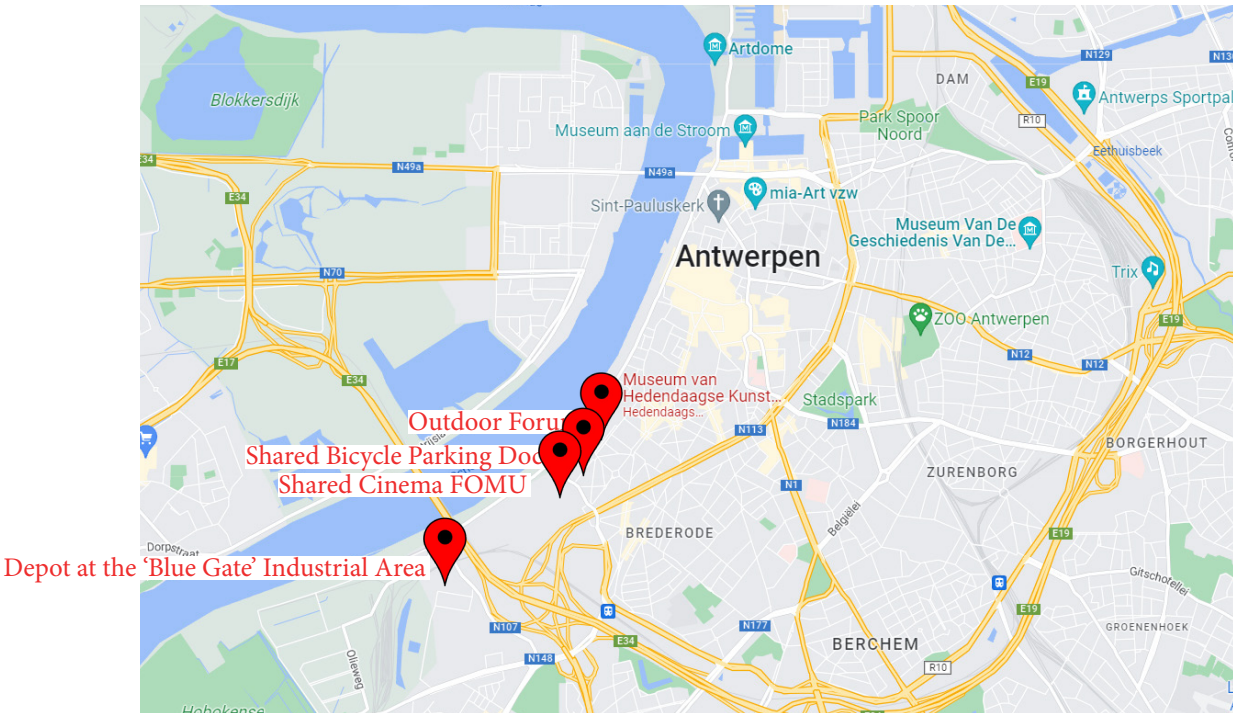


Brief Analysis

Changes needed: Less shadow on neighbouring buildings

- Lower art spaces, brief requires very tall art spaces (advantages: more intimate & lower building)
- Public Forum (reduced size, as part is outside)
- Shared functions among buildings around the park

	Program of Requirements		My Building Proposal		Percentage of Brief		Changes to the Brief
	m2 (Net)	m3	m2 (Net)	m3	% m2	% m3	
Collection Component	3032	16408	3032	15007	100 %	91 %	More smaller cabinets
Exhibition Component	3150	19800	3150	16913	100 %	85 %	Lowered ceiling tallest art spaces from 8 to 7m
Library & Archive	1901	7470	1785	6203	94 %	83 %	
Forum	3608	25140	1597	11328	44 %	45 %	Reduced forum heights and m2.. Replaced with collective outdoor forum..
Back office							Cinema & Auditorium flexible which can be closed/opened from the forum
..[workplaces]	375	1688	423	1696	113 %	100 %	
..[art handling]	1531	9748	977	6470	64 %	66 %	Removed interior depot to the antwerp ringroad 675m2
..[logistics and technical]	704	3143	542	2414	77 %	77 %	Bicycle storage, shared together in the zuiderdocks garages
..[administration]	727	2545	615	2202	85 %	87 %	
TOTAL	15028		12121				
Outdoor							
..[in the park]	0		9000				
..[on the terraces]	350		830				



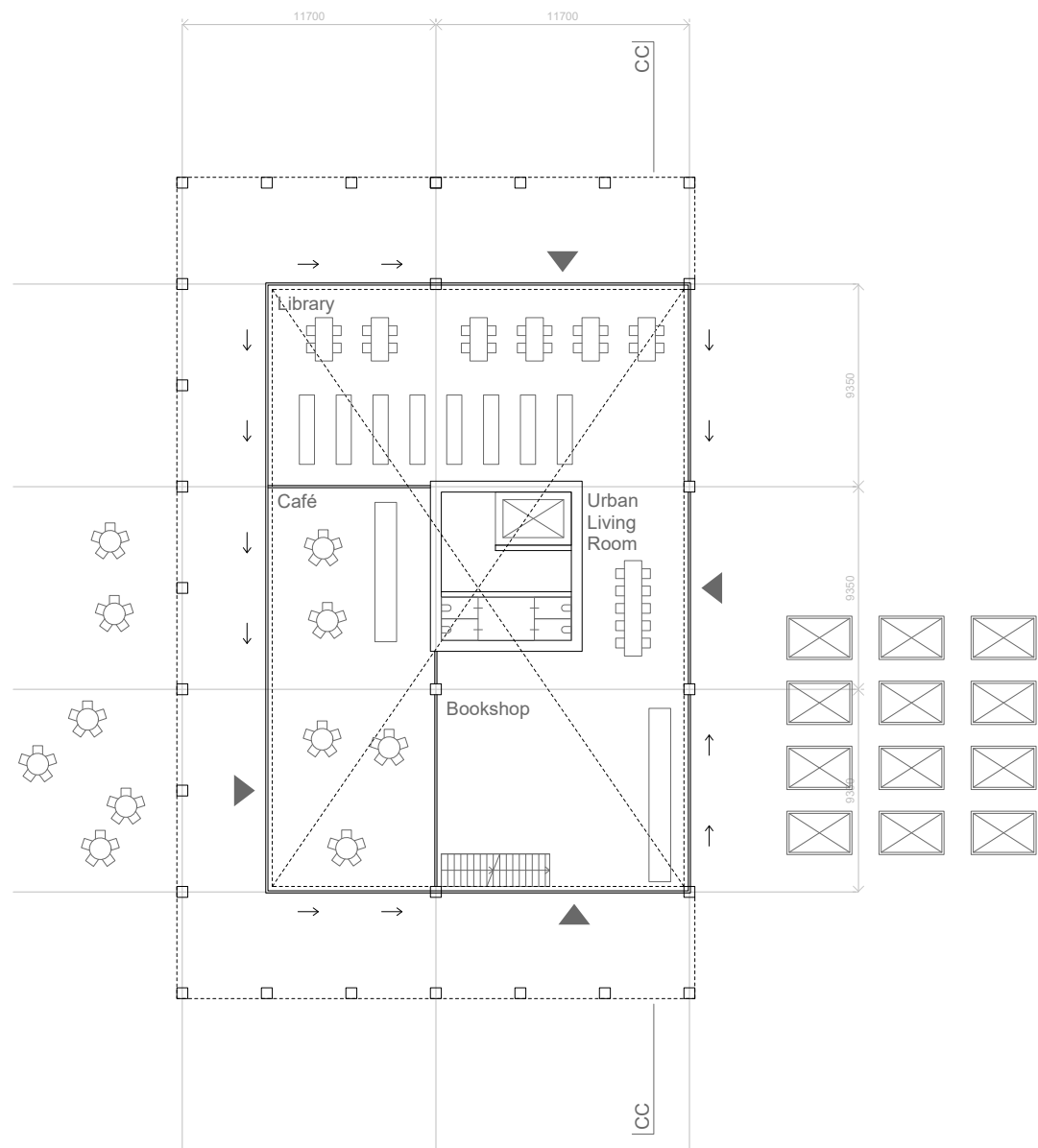




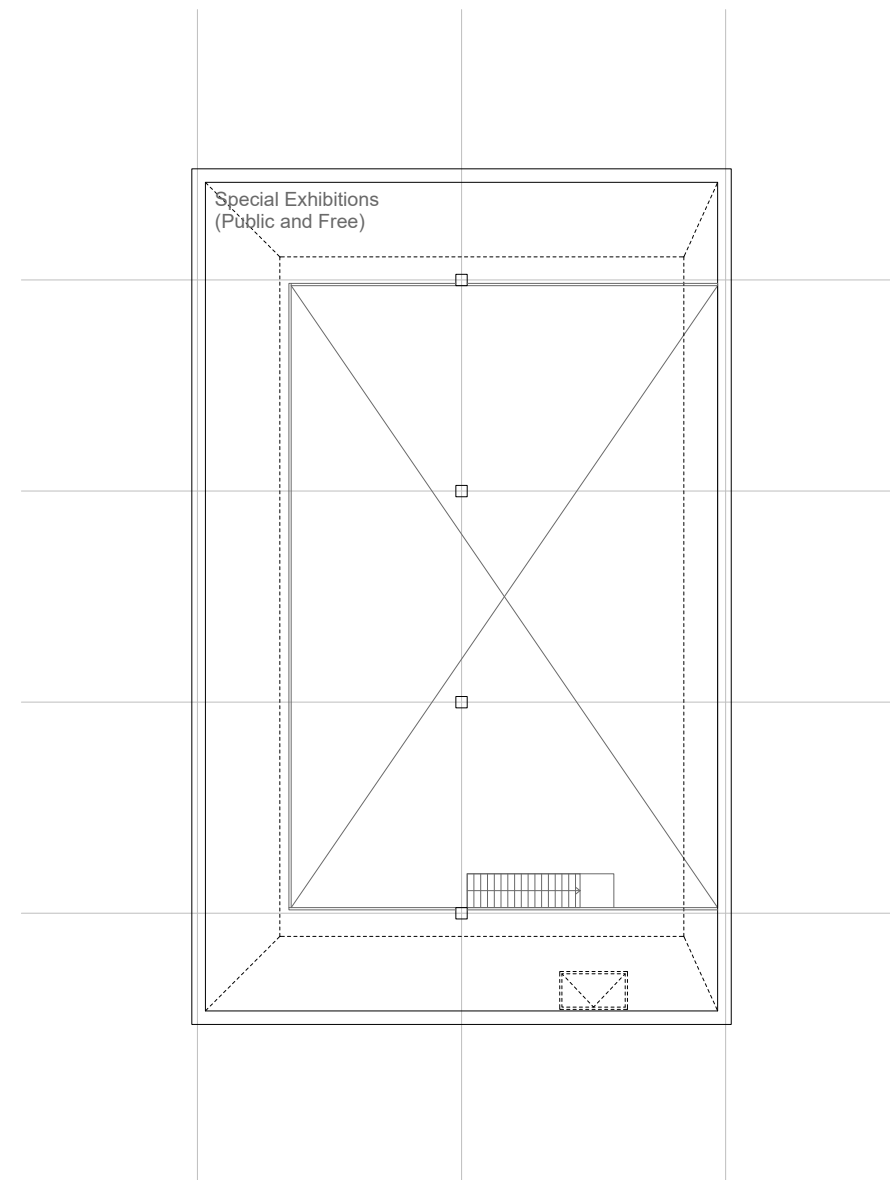
Outdoor covering for shelter. Low and human scaled entrance, opens up with a void in the middle to reveal the “mezzanine for art display”

Section CC

0 1 2 3 4 5 10m



Pavilion Ground Floor



Pavilion +1 Level

**Public Functions:** Library, Bookshop, Café & Urban Living Room. Both in synergy with the park





**Urban Living Room:** Standing in the Urban Living Room, looking across the Book Shop, the Outdoor Forum and the public and open art spaces on the mezzanine. Urban Living Room as a place of encounter for the neighbourhood. Together with the Community Garden on the left and a 'to do' pin up wall on the cork wall on the right to hang flyers for communal activities in 't Zuid.





**Natural Materials Used in Facade:** Cork Panels & Thermally Modified Wood & Terraces/Planters with greenery on different heights



## Cork

Up-cycled waste material

- From first peeling of cork tree which is not dense enough for the bottle cork production

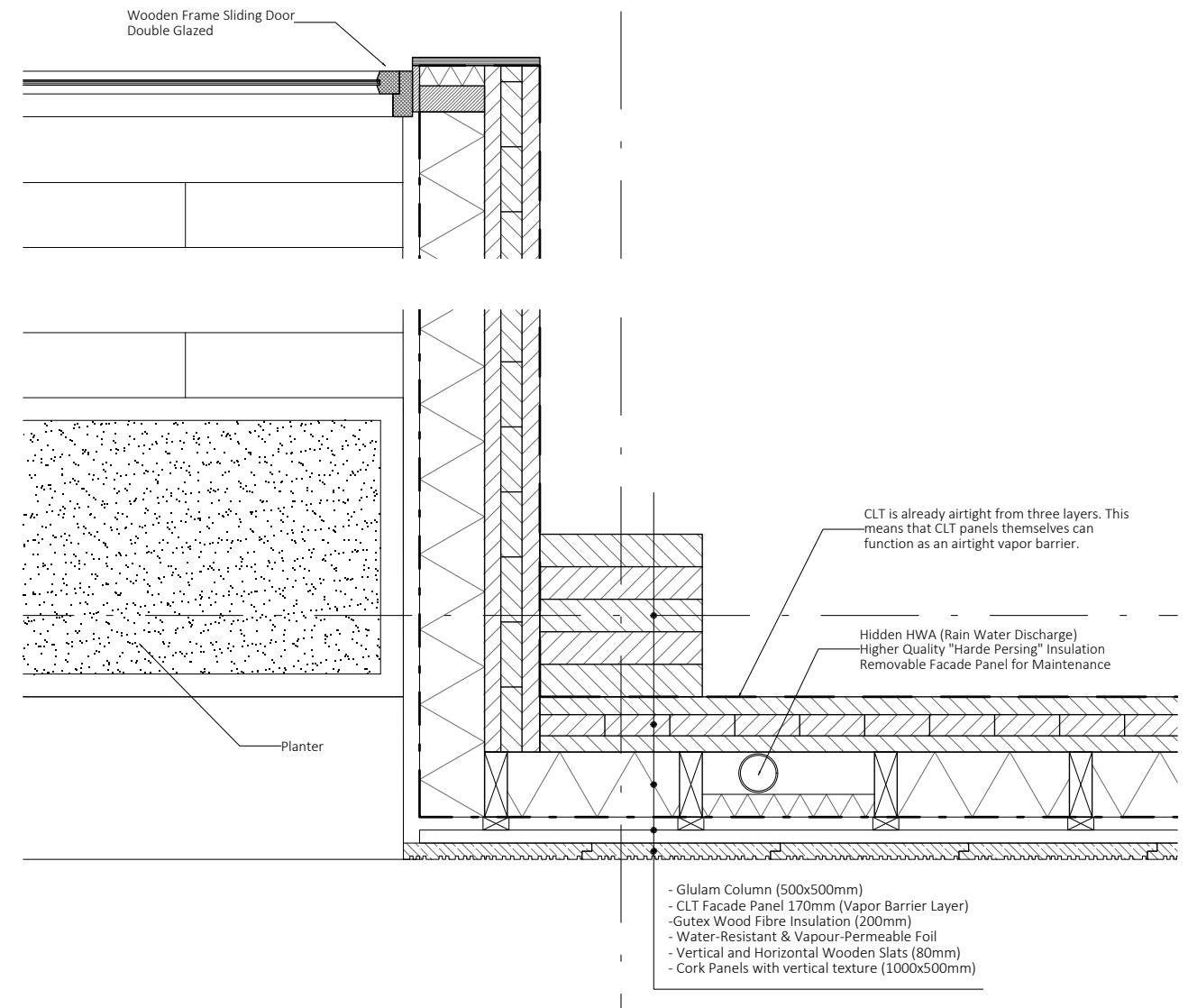
Material Changes depending on the day and light

- Rain: Darker Colour
- Sun: Brighter, dries up due to the sunlight

- Detail: Cork Panels with vertical pattern for tactility (& HWA, hidden behind panels)

## Planters

- Automatic watering system
- (Openable Windows, for shearing the plants from inside)



### Horizontal Detail 3

Horizontal Detail - Loggia: Wall Connection with Planters and Sliding Door  
1:5 (Rescaled to 1:15)



Reference Project: Cork Screw House, Berlin (Rundzwei Architekten)





**Human Scale:** Horizontal lines which give 'human scale' and give indication on the spaces behind the facade.



### Section Principle

- Smaller and more intimate edges
- Taller and Larger spaces in the middle

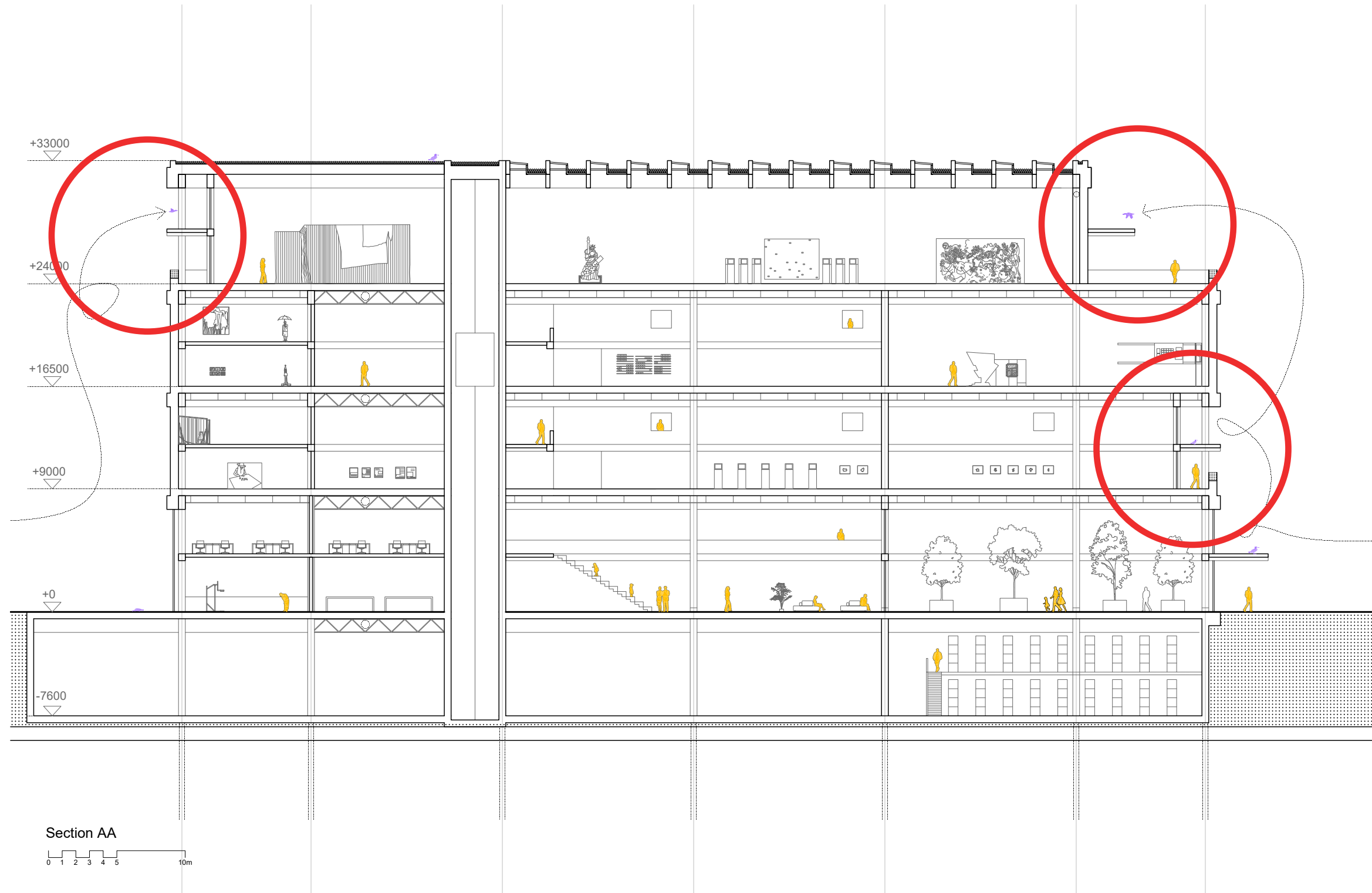


**Bird Species live on different heights**

**30m**  
Gierzwaluw (Swift)  
Spreeuw (Starling)

**18m**  
Zwarte Roodstaart (Black Redstart)

**12m**  
Huismus (House Sparrow)  
Witte Kwilstaart (White Wagtail)  
Huiszwaluw (House Martin)

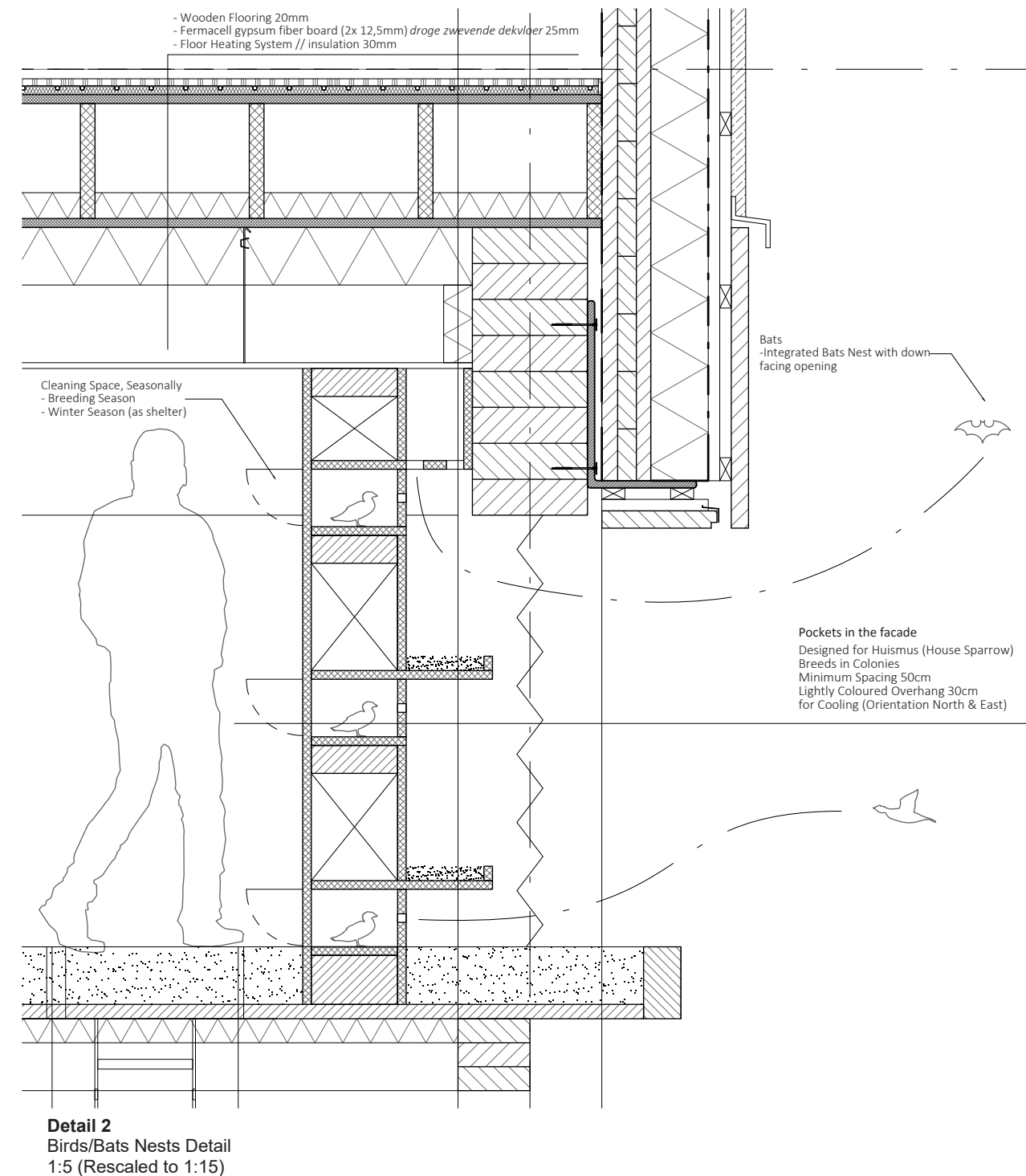
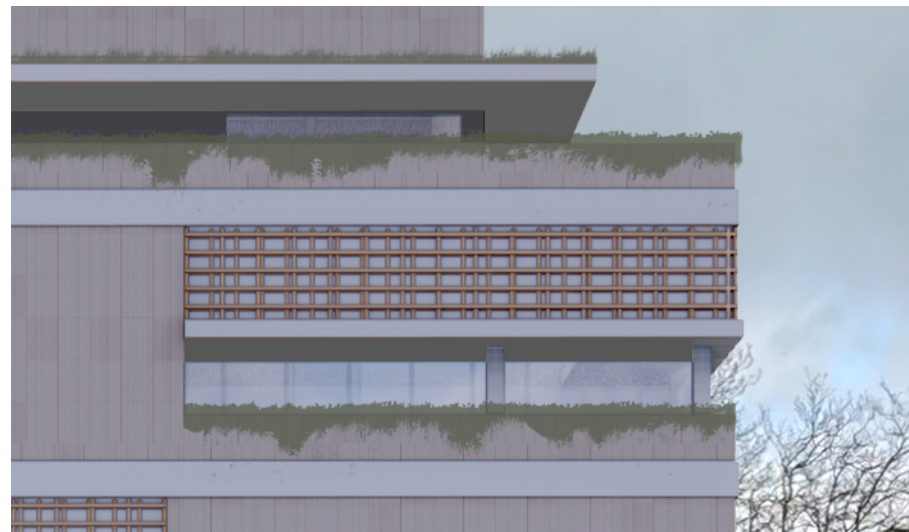


Horizontal lines divide the facade up into two (top part for non-humans bottom part for humans)  
**Inviting Plants and Animals on different heights depending on the species (Plants, insects, bees, birds and bats)**



## Inviting Plants and Animals following the guidelines for nature inclusive building

- Possibility for cleaning seasonally from the back (Cleaning Space accessed using 'vlizotrap' fold-out ladder from loggia below)
- 30 cm overhang for shadow (cooling)
- Minimum distance between two nests.







**Lines** wrap around and accentuate the corners



## Interesting Opened Corners

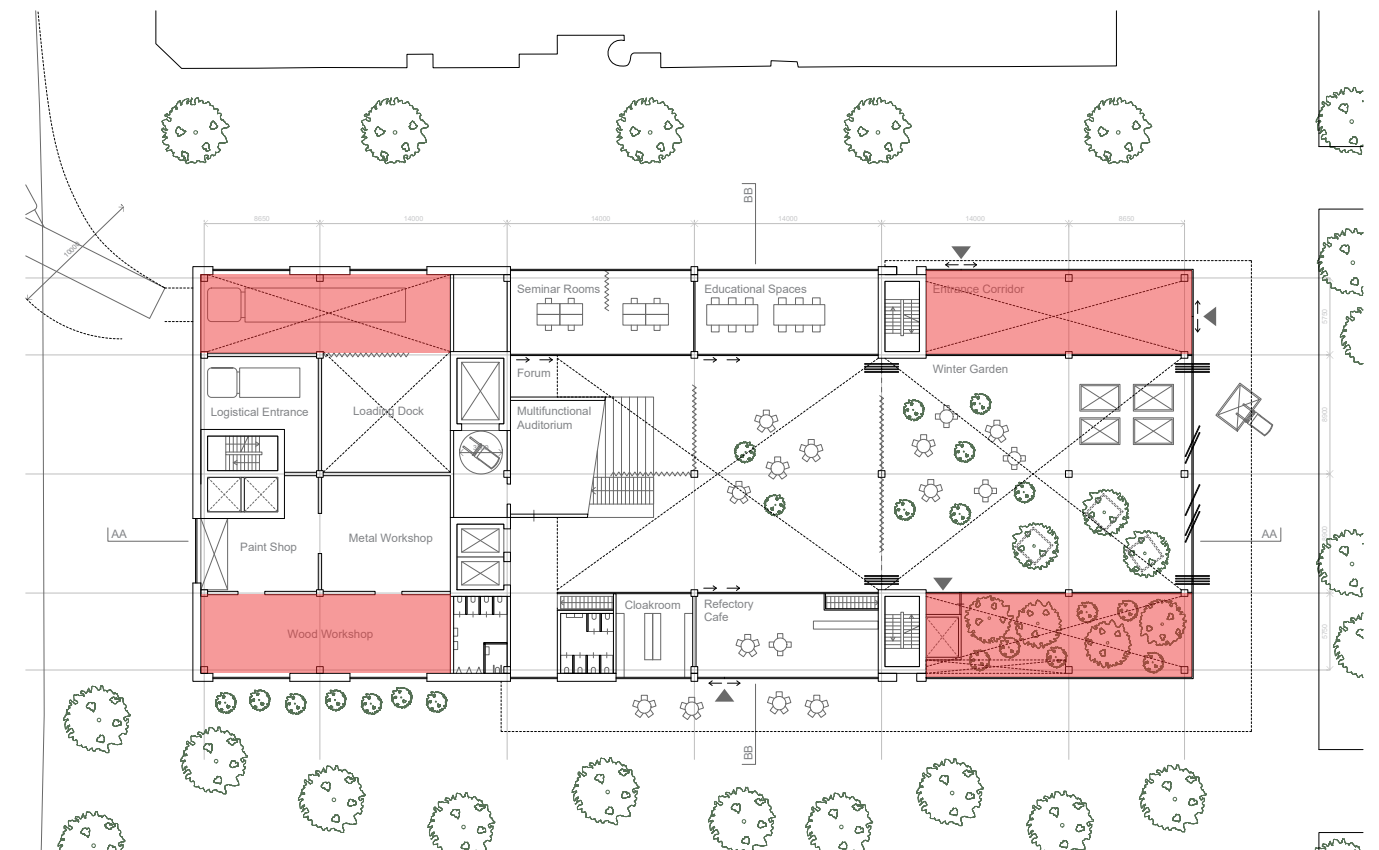
Able to see into

- Truck Loading Dock
- Entrance Corridor
- Winter Garden
- Wood Workshop

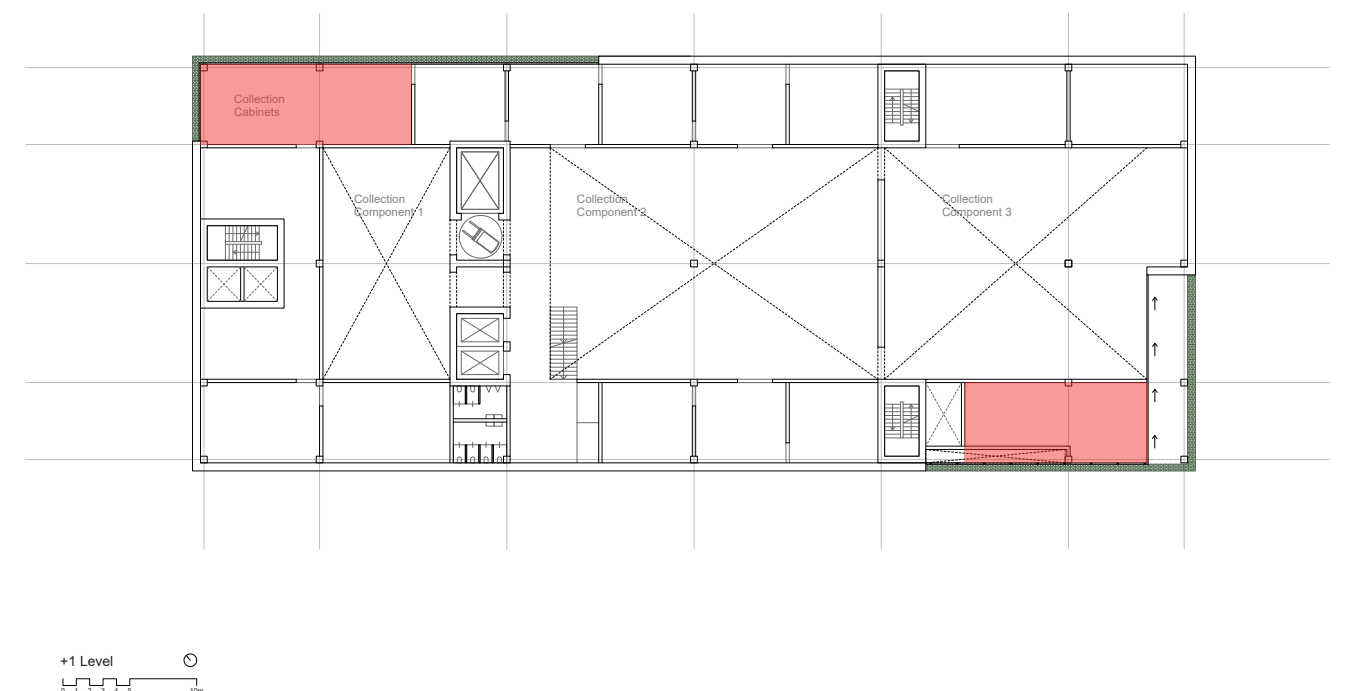
And understand the museum's functioning from the outside

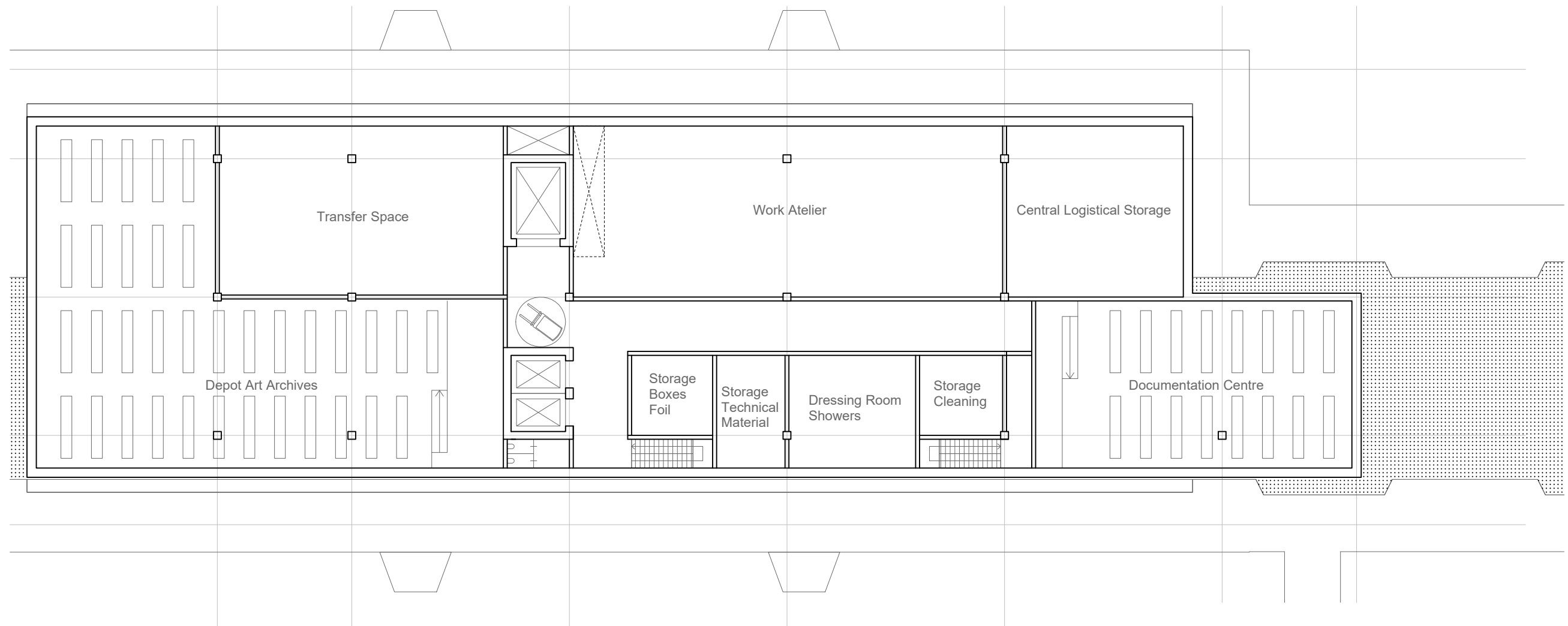
Similar in Art Space Floor Plans

- Encounters with daylight, nature

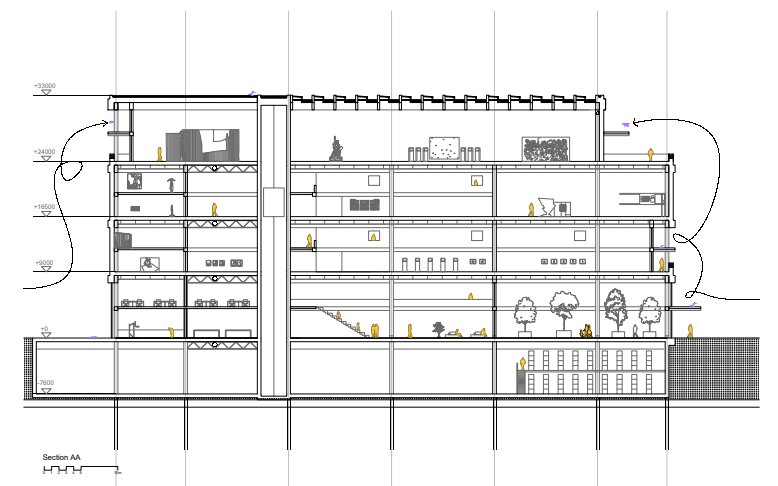


*Glimpse into the Truck Loading Dock from the street*

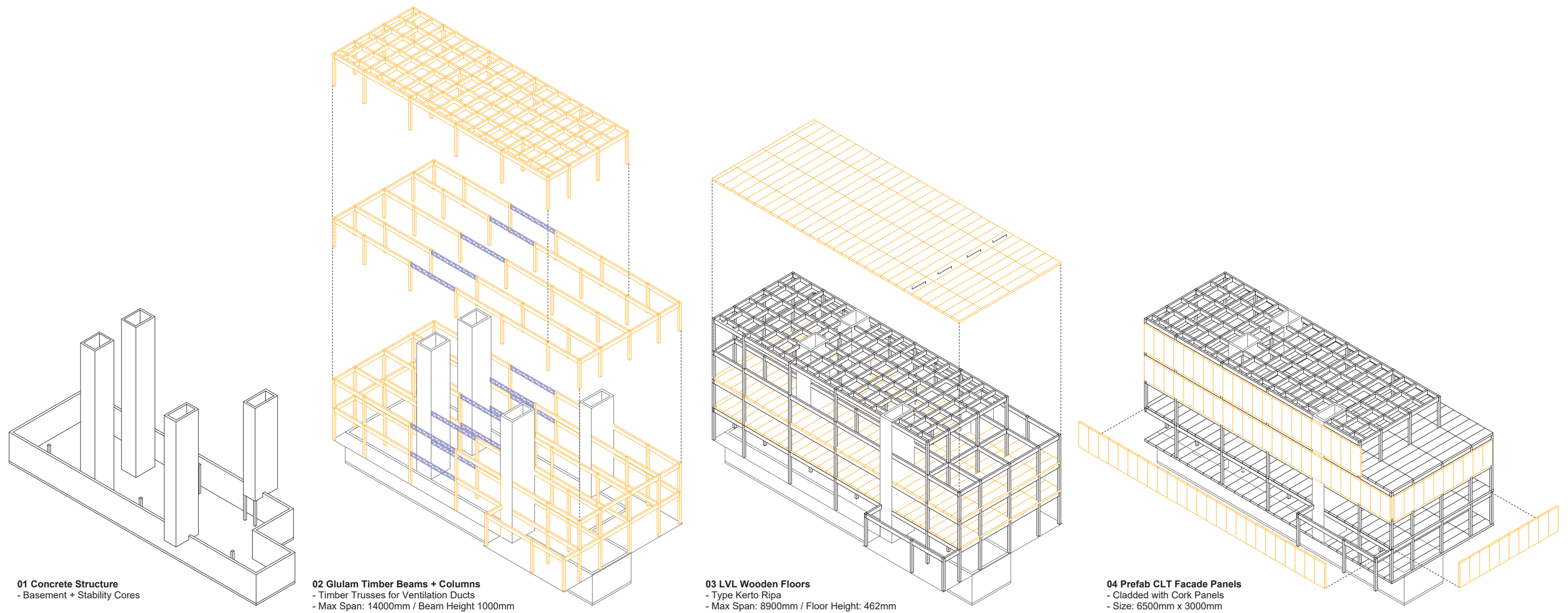




Maximized lock area for basement, as the lock already exists



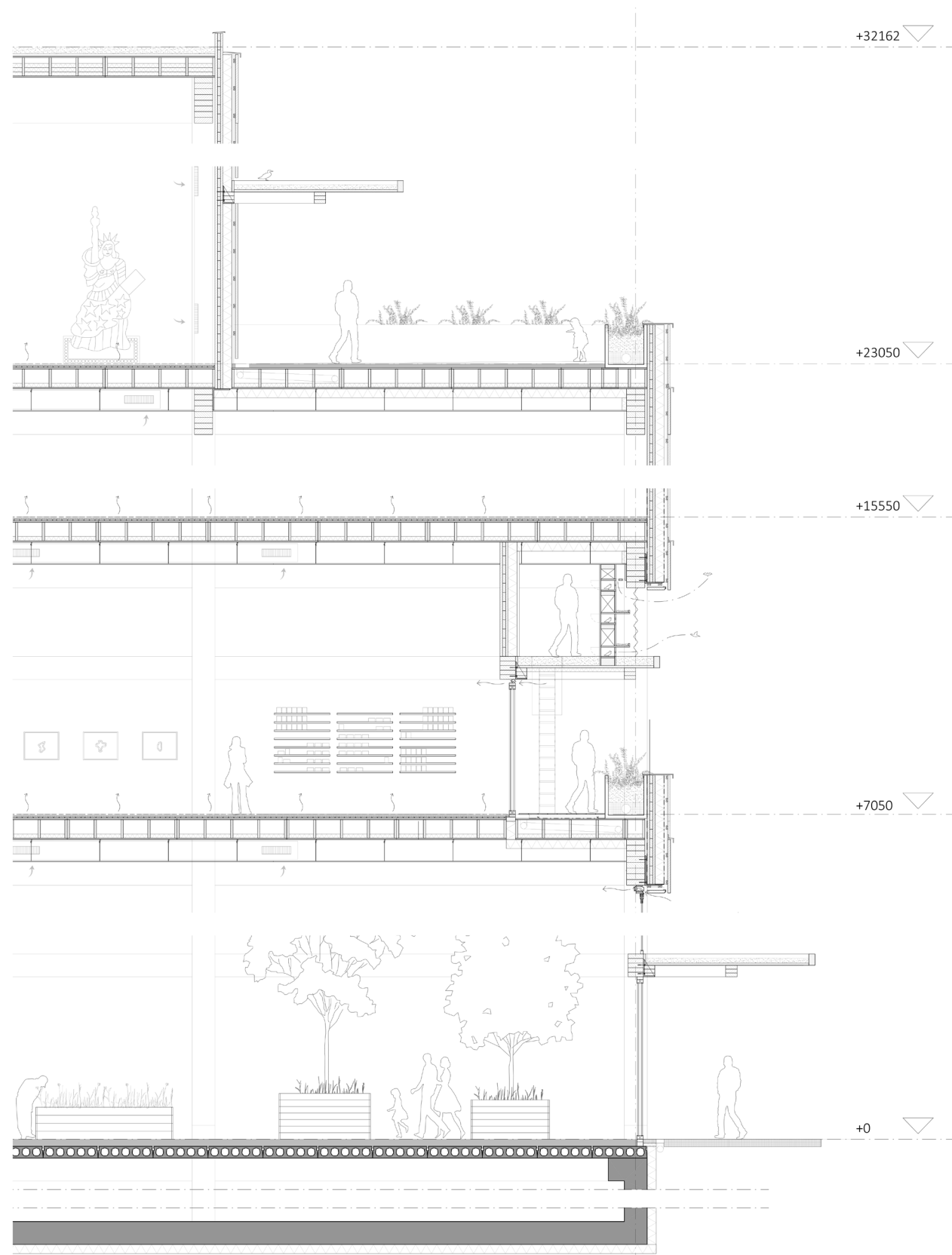




### Construction Diagram

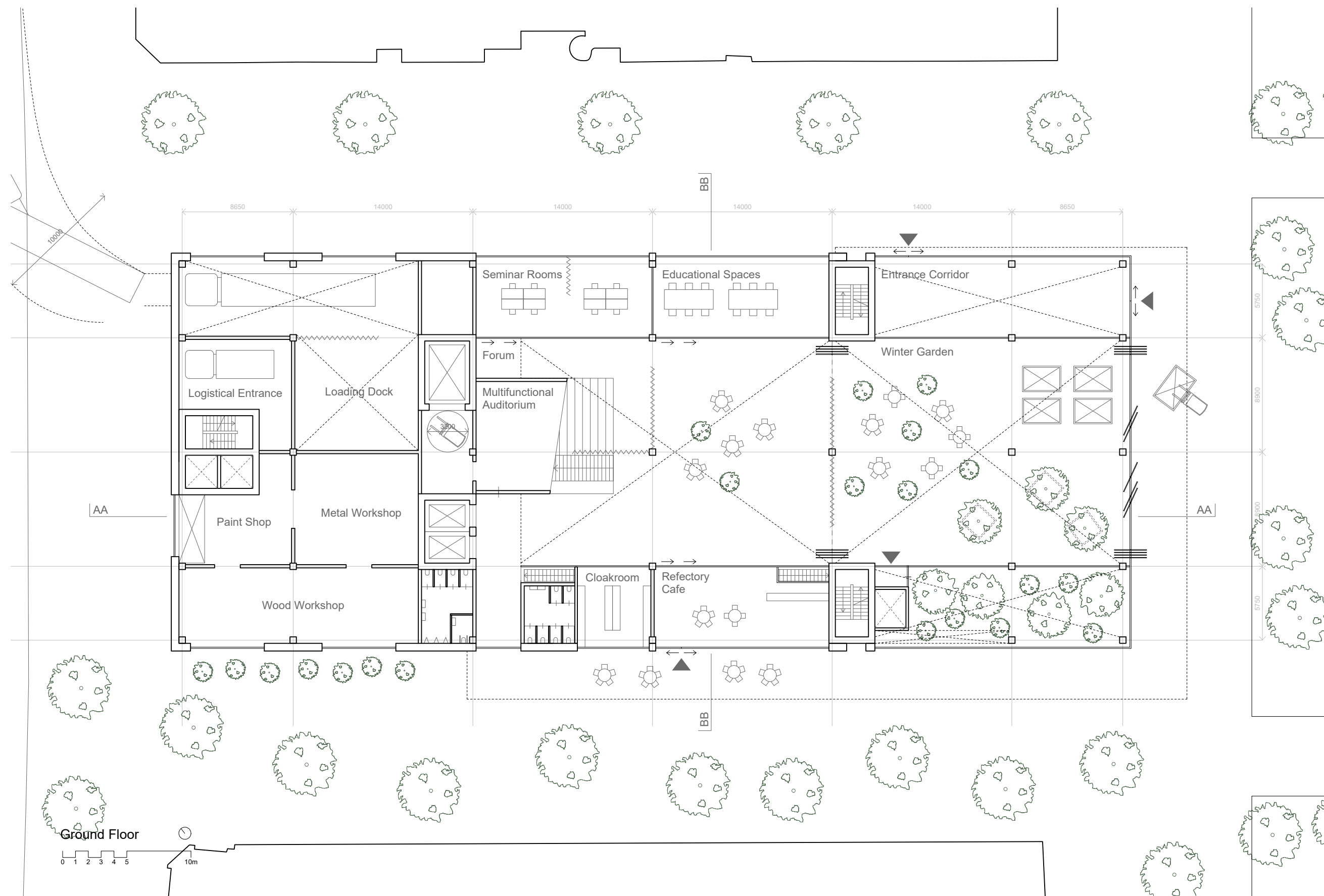
Only Basement & Stability Cores are from Concrete. Other materials are various types wood.

Glulam Beams (incidentally wooden truss for ventilation ducts), LVL Floors, CLT Facade Panels (Net carbon negative building through the CO<sub>2</sub> stored in wood)



How these aspects are incorporated. Fragment also on the wall. Slimmed down Overhanging Horizontal Elements so they appear more Balanced.

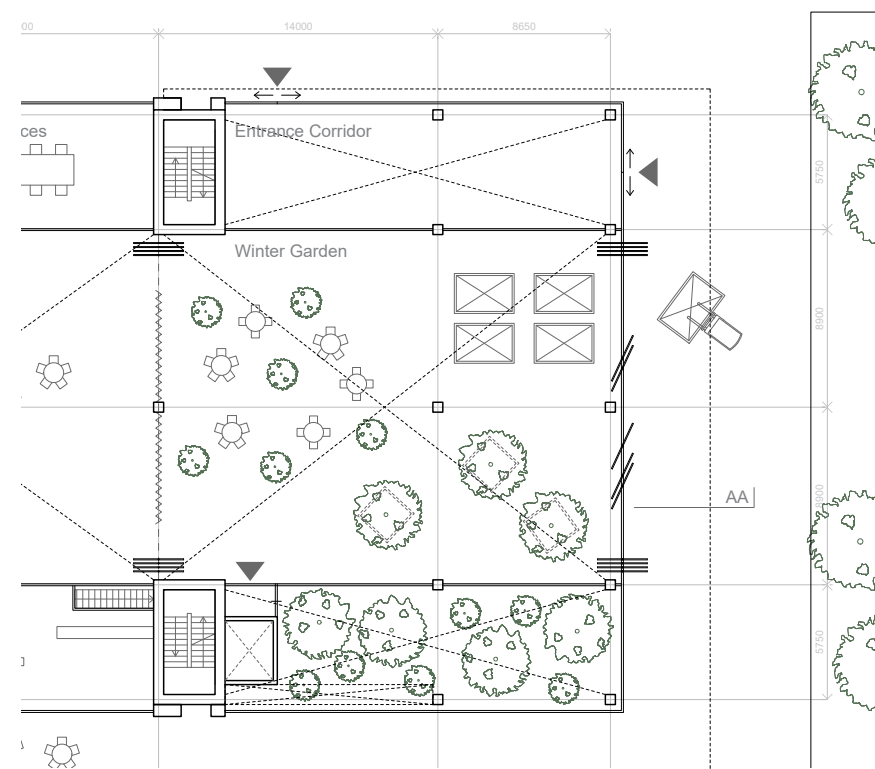




"Street" through in the middle and "Winter Garden" at the front invite the public in. Both as a continuation of the "Outdoor Forum" on the right in the Park

**Winter Garden consists of two parts.**

- Closed Off Section “Real Winter Garden” filled with plants as a glass case oriented on the south.
- Open Section with Plants in Pots in the “street” Special Species, specifically grown for indoor light situations







Model Picture **Winter Garden** comes alive through the 24h cycle of the sun  
“how it invites the neighbourhood in”





### Winter Situation

In colder and rainy months, winter garden can be used for shelter. Offers space inside for the neighbourhood & community garden





### Summer Situation

Winter Garden, street in the middle opens up and the plants in pots become outside. Shading from Sun



### Private Back Part & Public Front

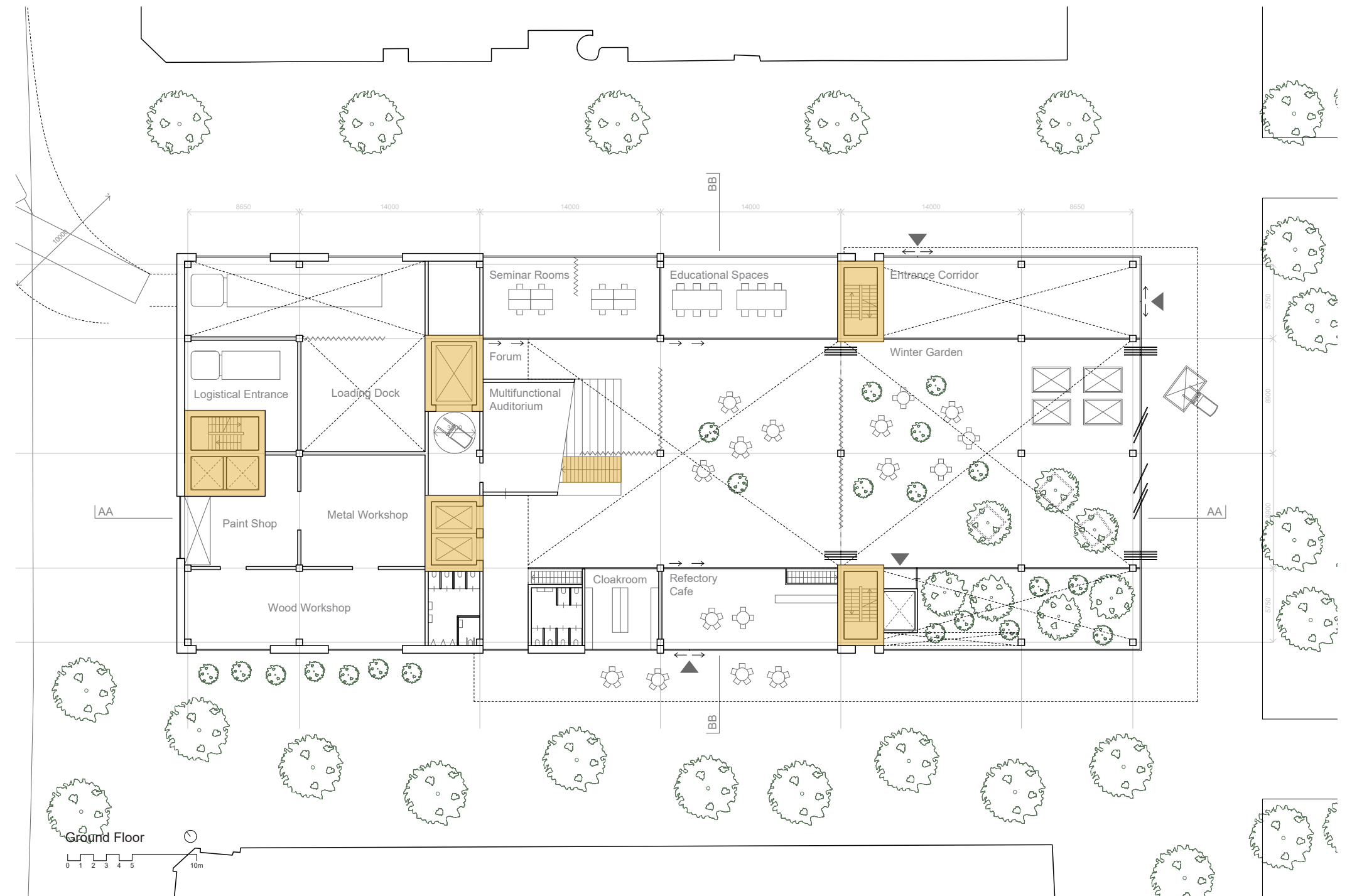
- Logistics, Art Handling, Workshops, Back-office





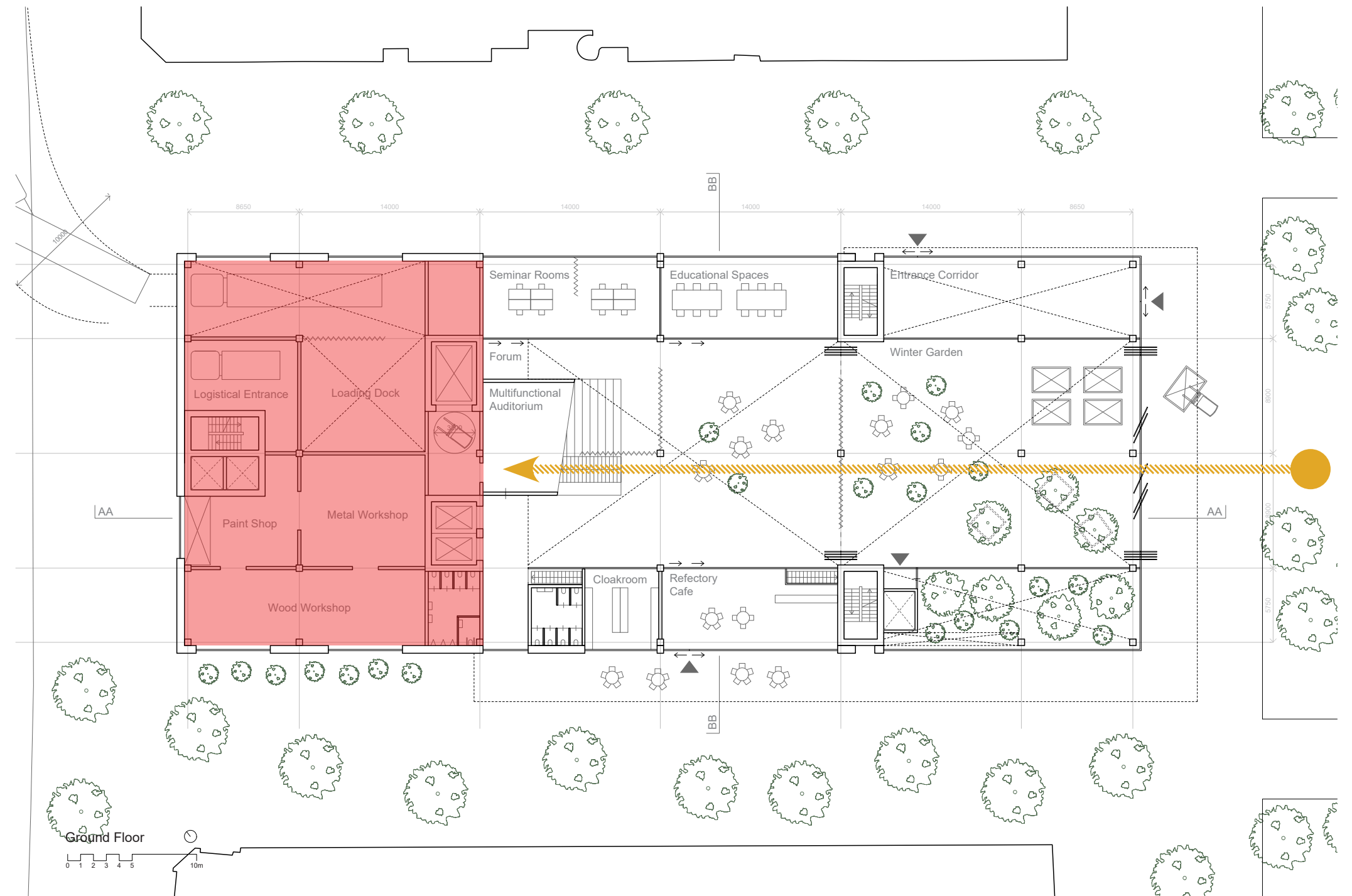
### Cores & Vertical Circulation

- 3 Escape stairs
- 2 Passenger Elevators
- 1 Art Elevator
- 1 Public Stair main route through the museum

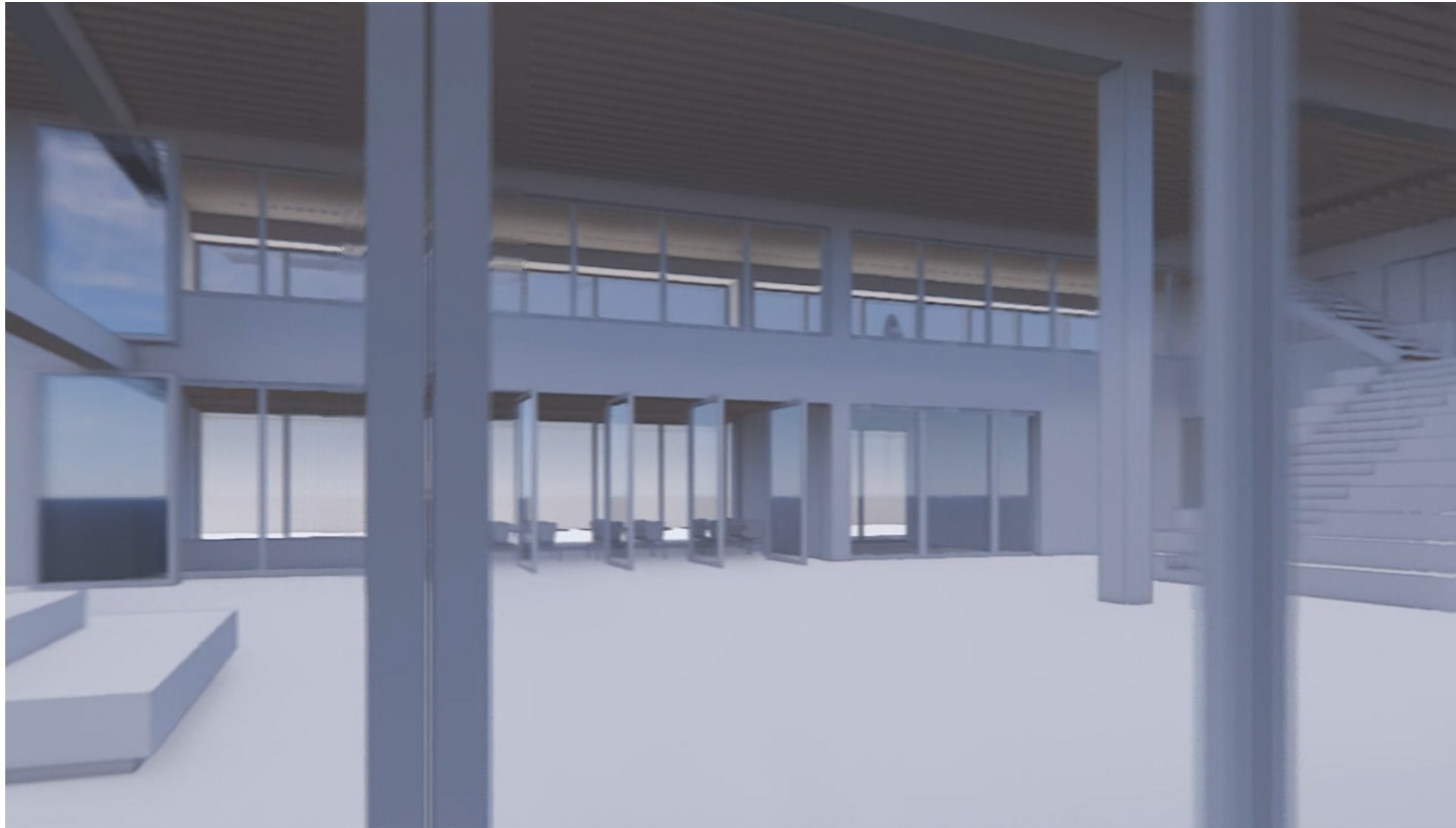


### Varying degrees of publicness (Outside to Inside)

- Park (outdoor forum)
- Covering (for shelter)
- Winter Garden
- Foyer
- Auditorium Stairs to the exhibition floors







**Stop Motion Animation (show video)**

Route from outdoor forum, through the winter garden and foyer towards the art spaces above.





### Interior Foyer

In line with the anti-museum feeling, the welcoming of “Non-Human” creatures in the Interior. With integrated “Planter-Benches” around the columns. Where humans are invited to sit and smaller plants (non-humans) are invited to grow around and on the wooden column. Here are informal human & non-human interactions.

Furthermore: Green Street on the Left. Central Open Space for “Informal” Art Display.



### Stop Motion

#### Flexibility Forum Space (24h cycle)

- Curtains can compartmentalize the large space within the grid of the column
- Day or night, forum stays accessible, even if museum is closed
- Auditorium can be flexibly used throughout the day depending on the activity







Time 7:30 - M HKA closed, Museum Cleaned and Plants Watered





Time 10:00 - **M HKA** open, stairs as access to art spaces above, Left side of the stairs used by Non-Humans (planters), right side by Humans (as a rest and sitting area)





Time 15:00 - **Podium simultaneously used for small groups (book presentations, reading sessions, magazine launch)**





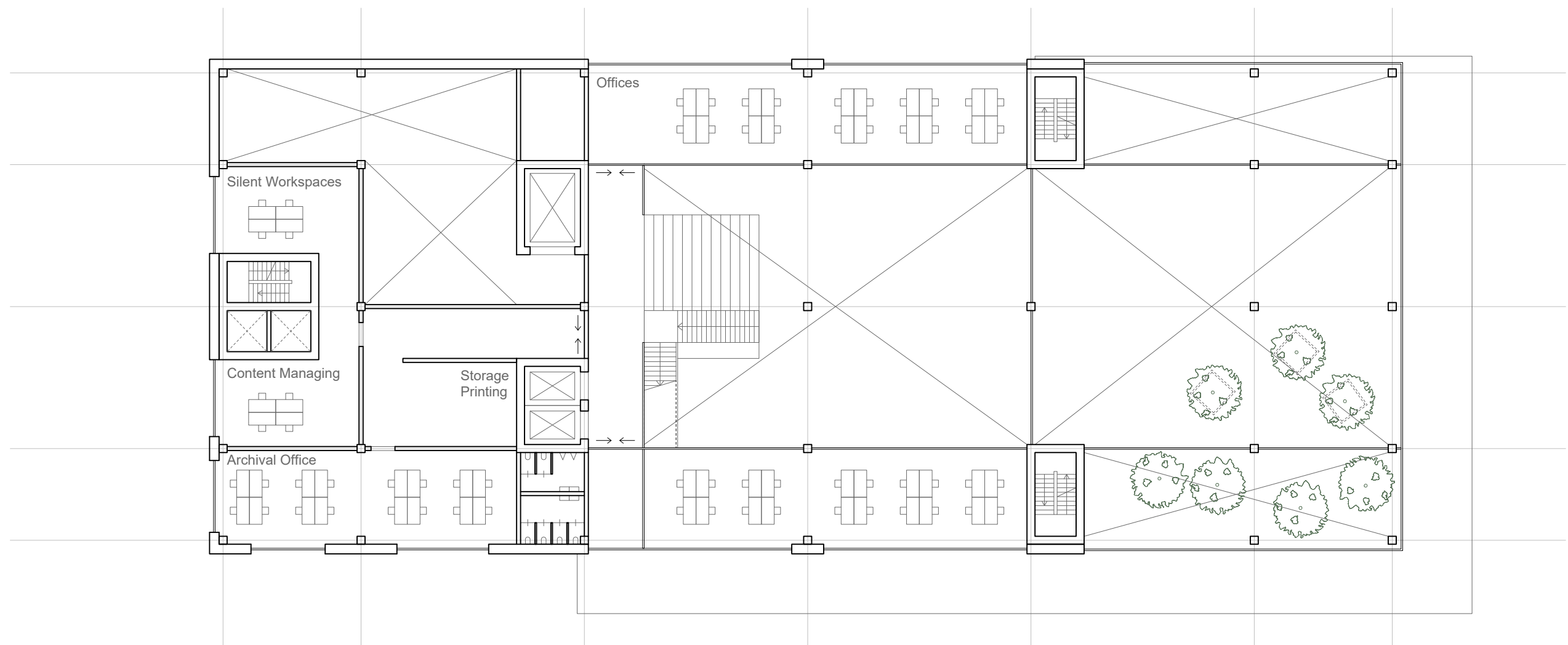
Time 18:00 - M HKA Closed, Movie Screening by artist, space dimmed using curtains

### Ventilation and Lighting Strategy

- Lowered ceiling with wooden slats
- Lights mounted inbetween the slats
- Ventilation Ducts (Supply and Discharge): hidden above lowered ceiling.







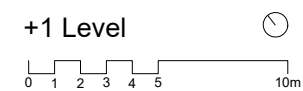
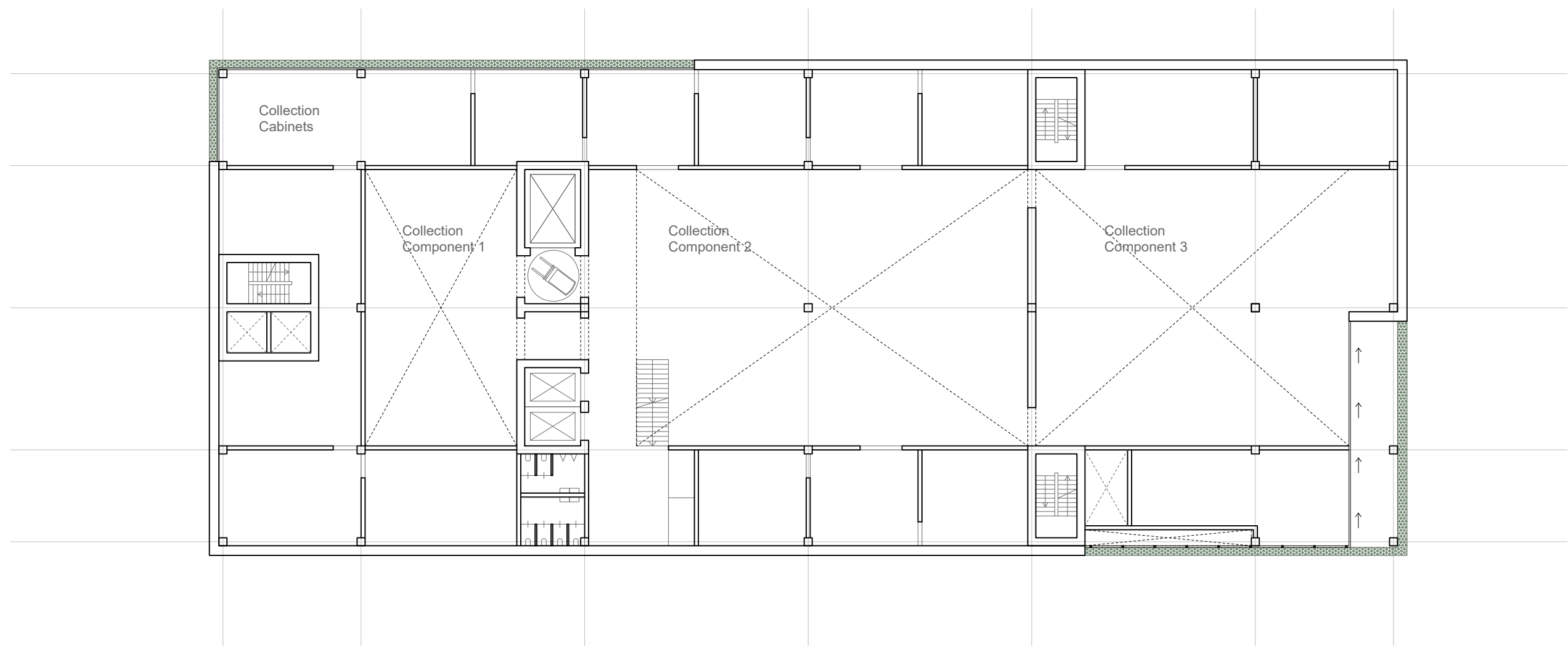
+0.5 Level

0 1 2 3 4 5 10m



**White Parapet** able to look across the forum

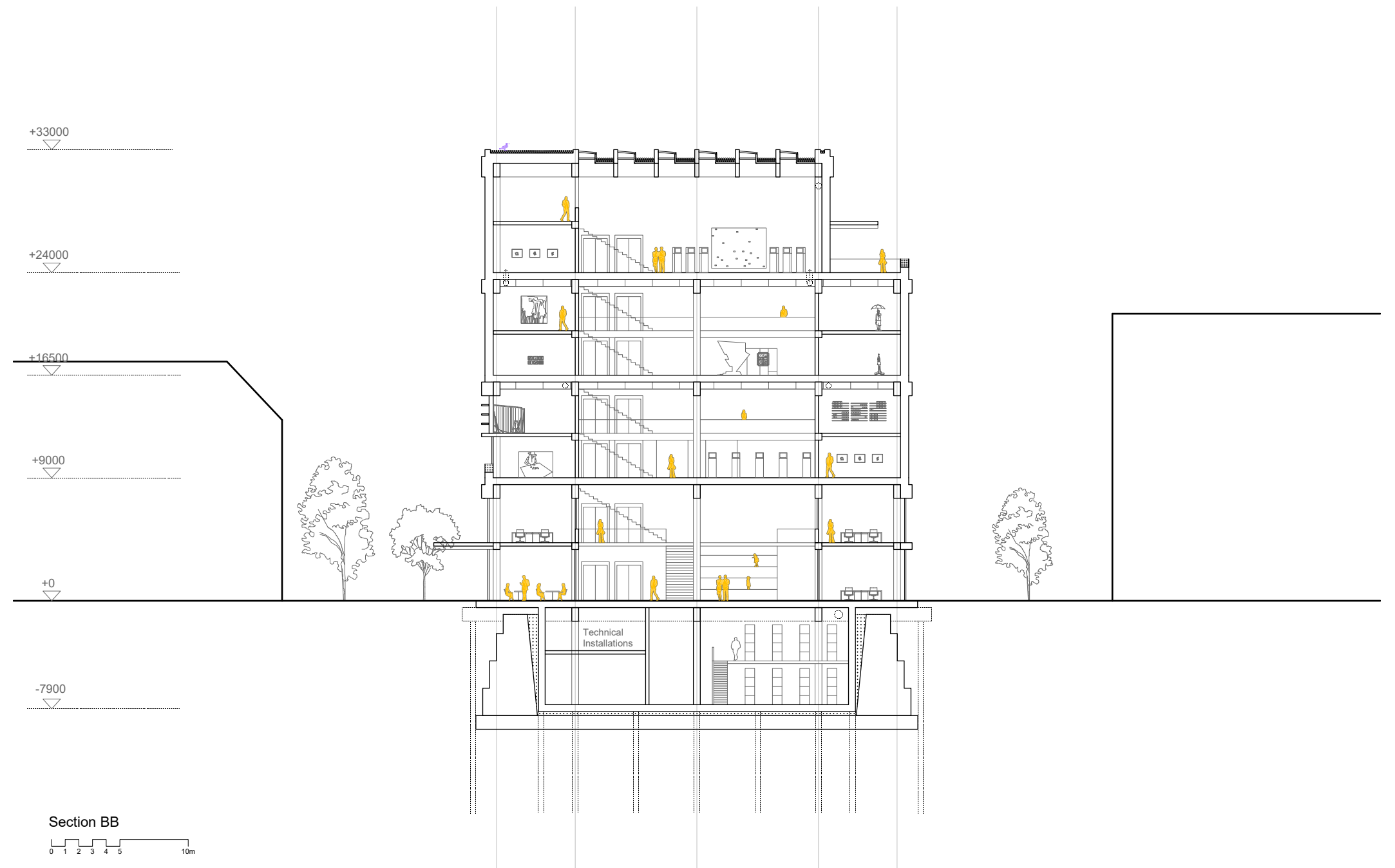




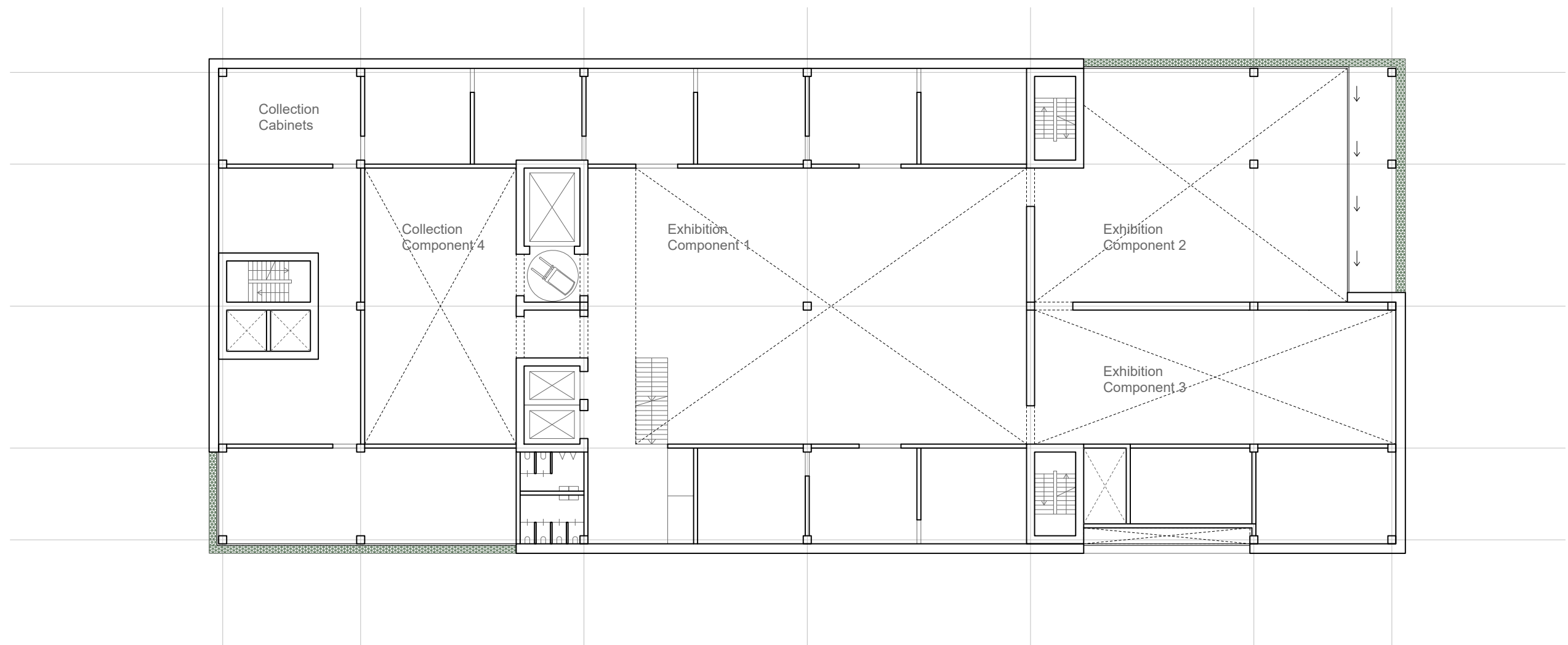
**Compact & Efficient Floor Plans**  
 Similar Principle: Intimate Cabinets on the sides and larger spaces in the middle

### Section Principle

- Smaller and more intimate edges
- Taller and Larger spaces in the middle

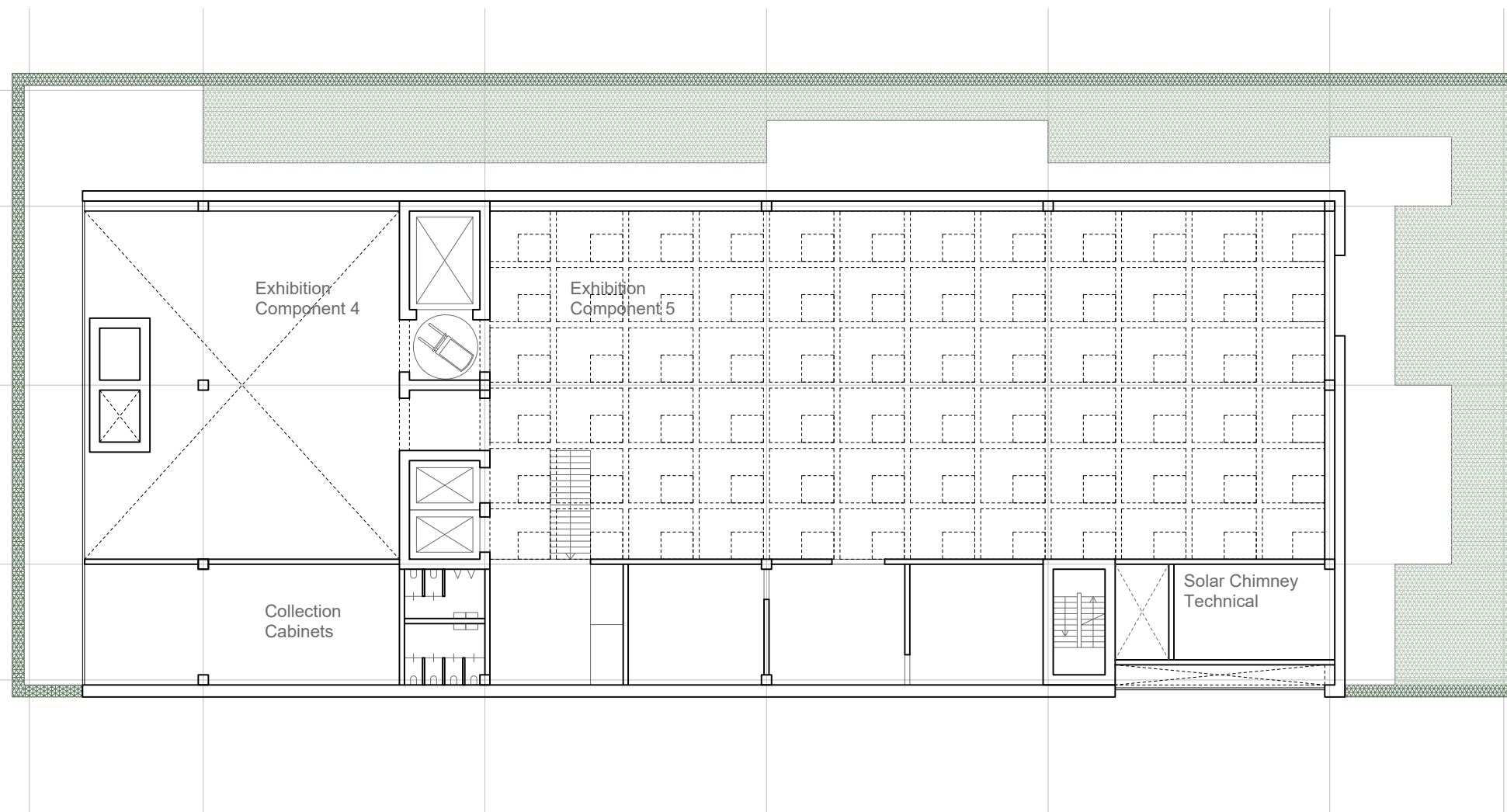






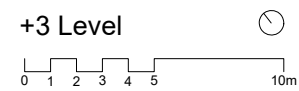
+2 Level

0 1 2 3 4 5 10m



### Top Exhibition Floor

Natural Daylight using sky lights from the top, no columns for maximum flexibility and large “roof garden” with large planters.







Intimate Edges (Cabinets), Larger Central Spaces, Display on deeper window frame (with relation to outside), Bridge flows over elegantly into the cabinets.  
**Lights and Ventilation** hidden under plywood sheets, small slits for light tracks and air vent for a minimal look.





**Wooden Glulam Structure Muted for Large Artworks** Muting the Glulam structure to only lightly perceive the horizontal and vertical lines as lines as a backdrop for larger artworks. Artist: Kerry James Marshall.





**Interesting Corner Art Spaces** Offering M HKA Unique Art Spaces which you won't find in a typical White Cube Museum Building. Art Spaces have relations to the outside terraces with Human & Non-Human interactions between the people on the inside and the outside plants. These spaces could especially be a home for the expanding future collection of M HKA. I bring the Cork Facade Material Inside by wrapping it around the corner, reinforcing the slippage between inside and outside.



**Already started exploring topics of:**

- Slippage (thresholds, boundaries, continuing materiality)
- Courtyard as an outdoor area
- Deep Windows for art display



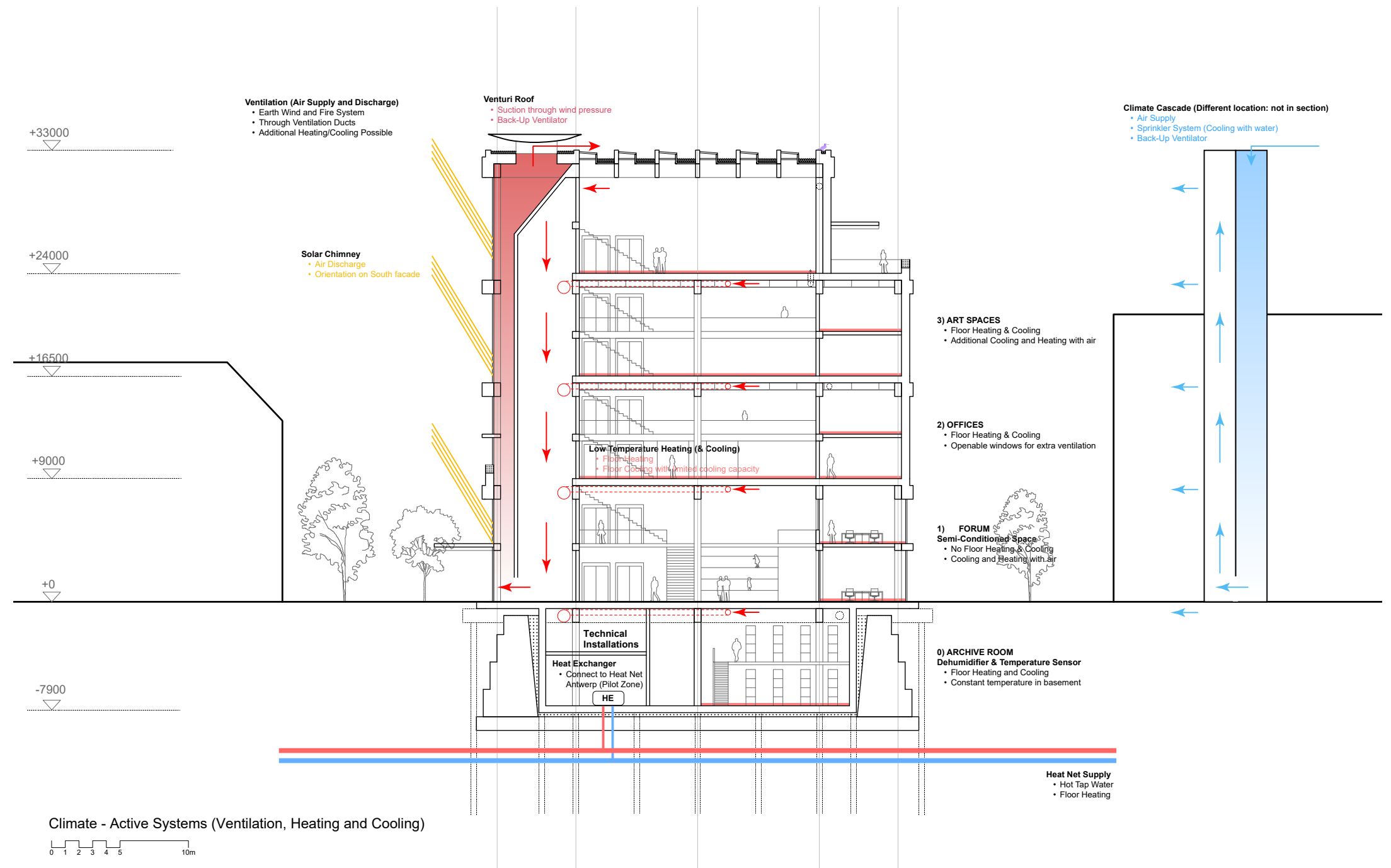


## Ventilation Concept Earth, Wind and Fire by Ben Bronsema

- “Powered” by Nature
- 85% Less Energy Consumption than traditional air handling unit
- Solar Chimney & Climate Cascade

### Ventilation Ducts

- Through the ceiling
- At top floor with the sky lights through the double wall construction.

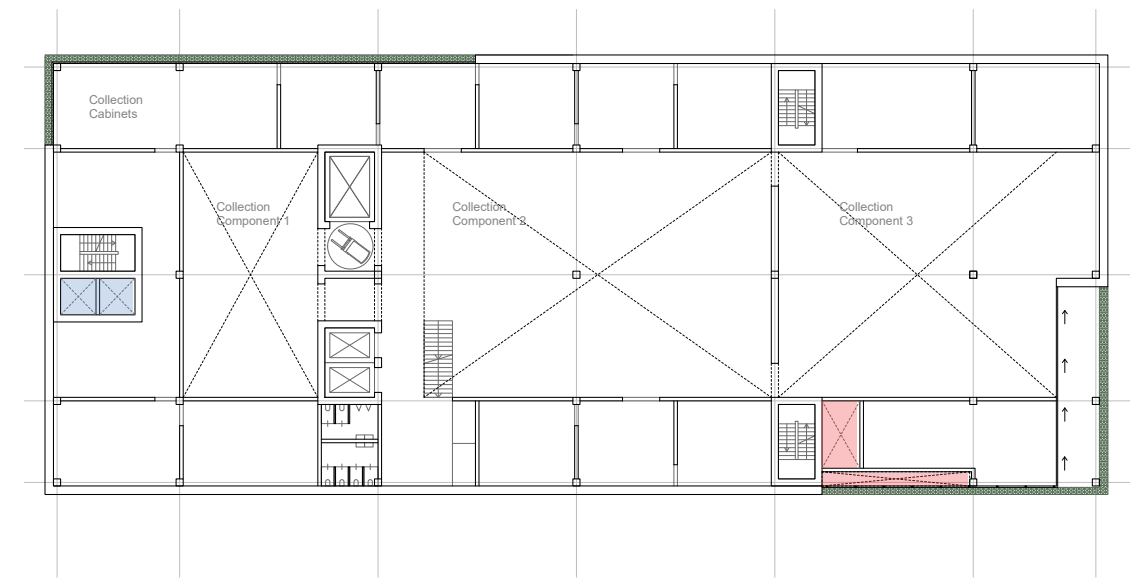


### Solar Chimney

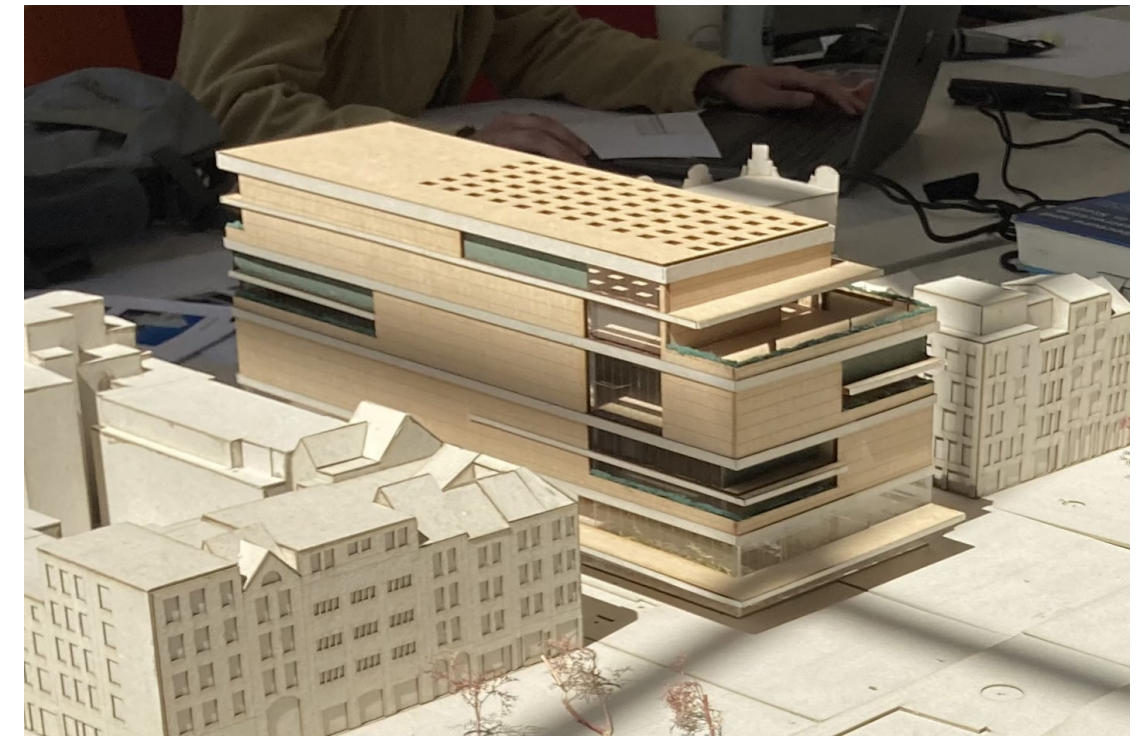
- Orientation on the most southern facing facade corner.
- Maximized Glass Surface Area (shallow and wide shaft)

### Climate Cascade

- Location in the plans



*Solar Chimney and Climate cascade location in plans (separated)*

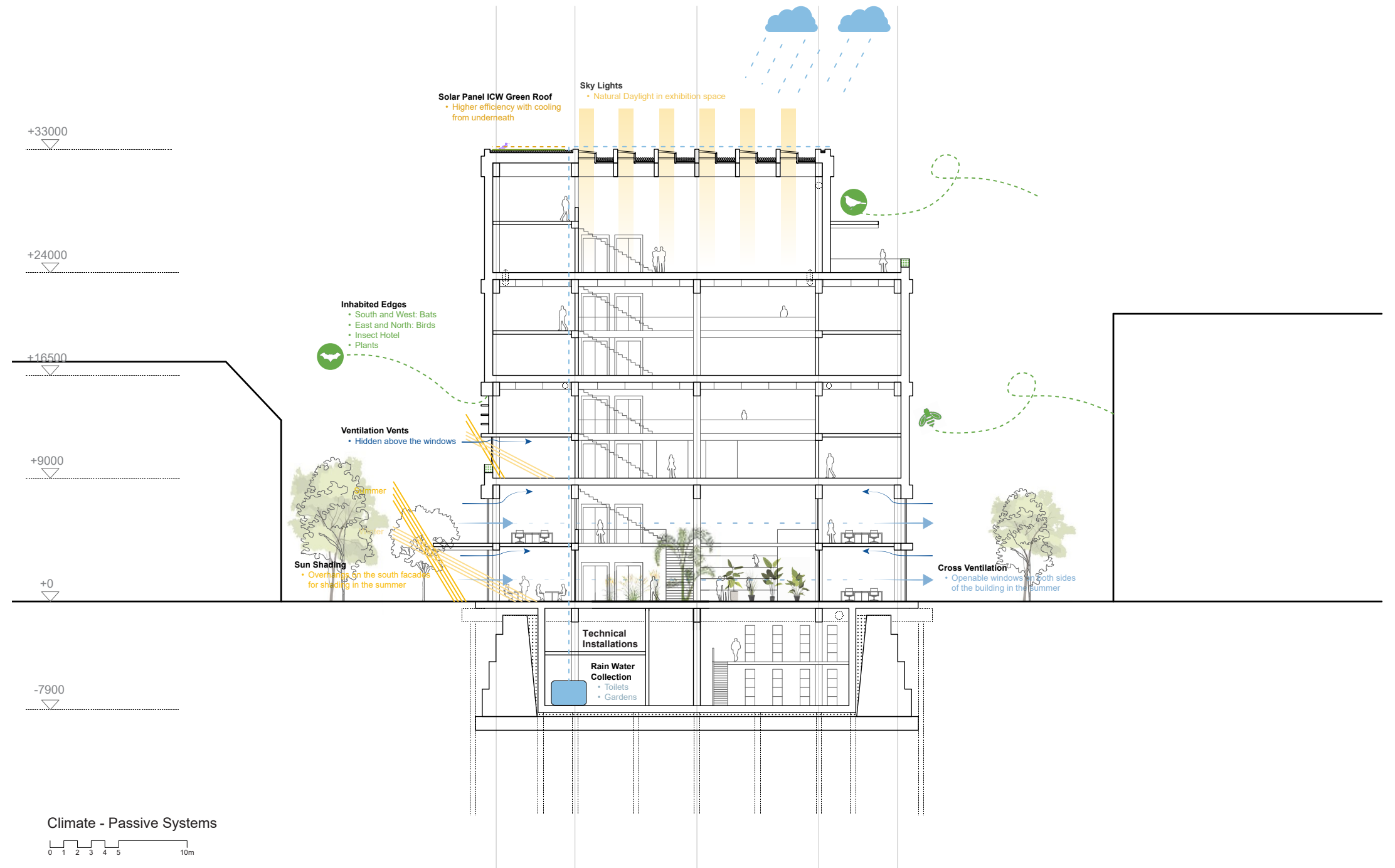


*Solar Chimney: maximized glass surface on southern most corner*



## Other Sustainability Aspects

- Inhabited Edges: plants, insects, bees, birds & bats on terraces on different heights dependant on orientation
- Loggia's/overhangs on south side for sun shading
- Natural daylight through the top floor
- Ventilation vents above the windows

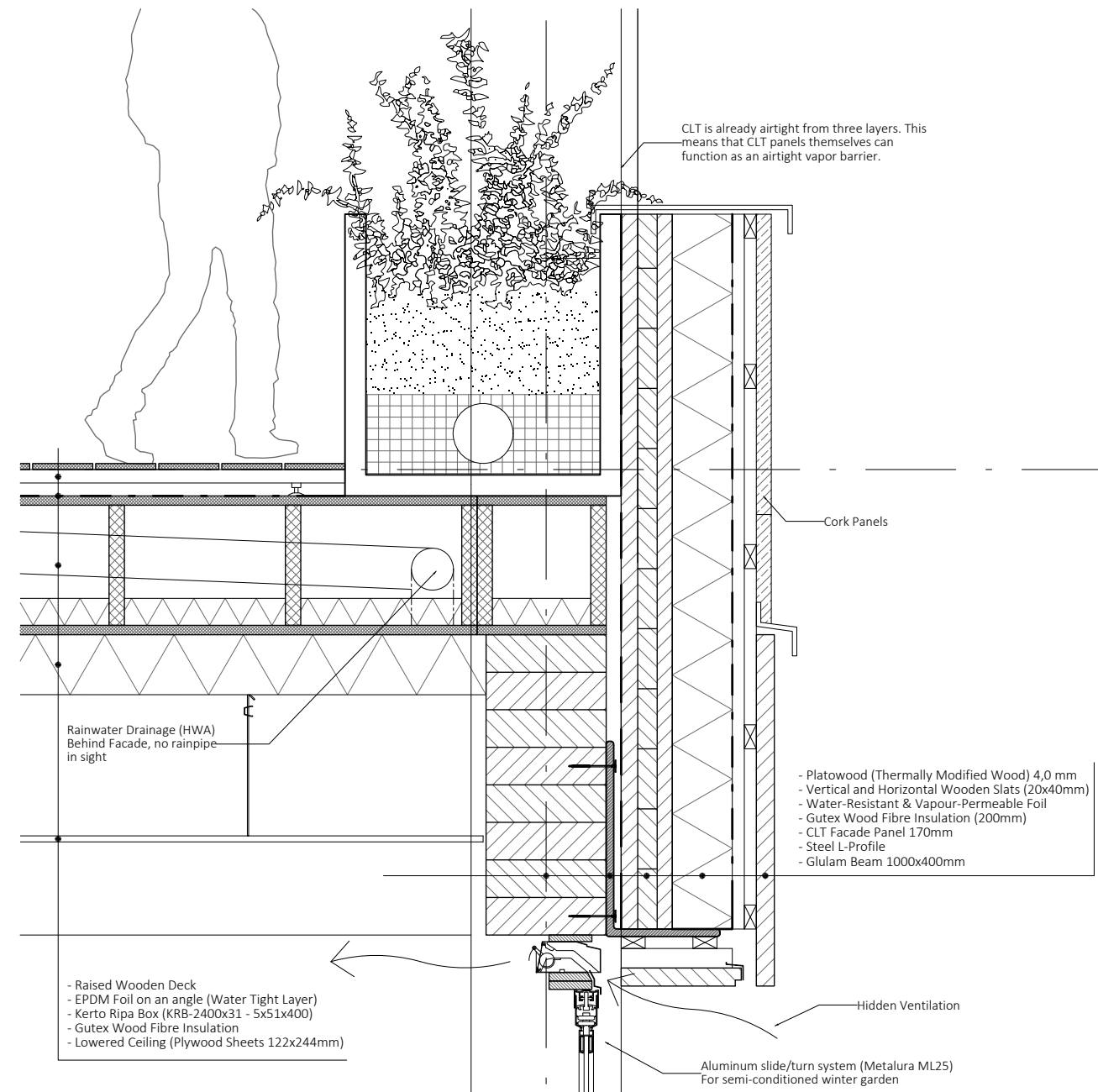


## Detail Planters & Hidden Ventilation

### Hidden Ventilation Detail

#### Maintenance of Planters

- Built in Automatic watering system
- Openable windows so it can be trimmed



**Detail 1**  
Loggia and Hidden Ventilation Detail  
1:5 (Rescaled to 1:15)



## M HKA museum of co-existence

Hopefully my project can offer “perspectives” for designing with the notion of **co-existence** in mind.

