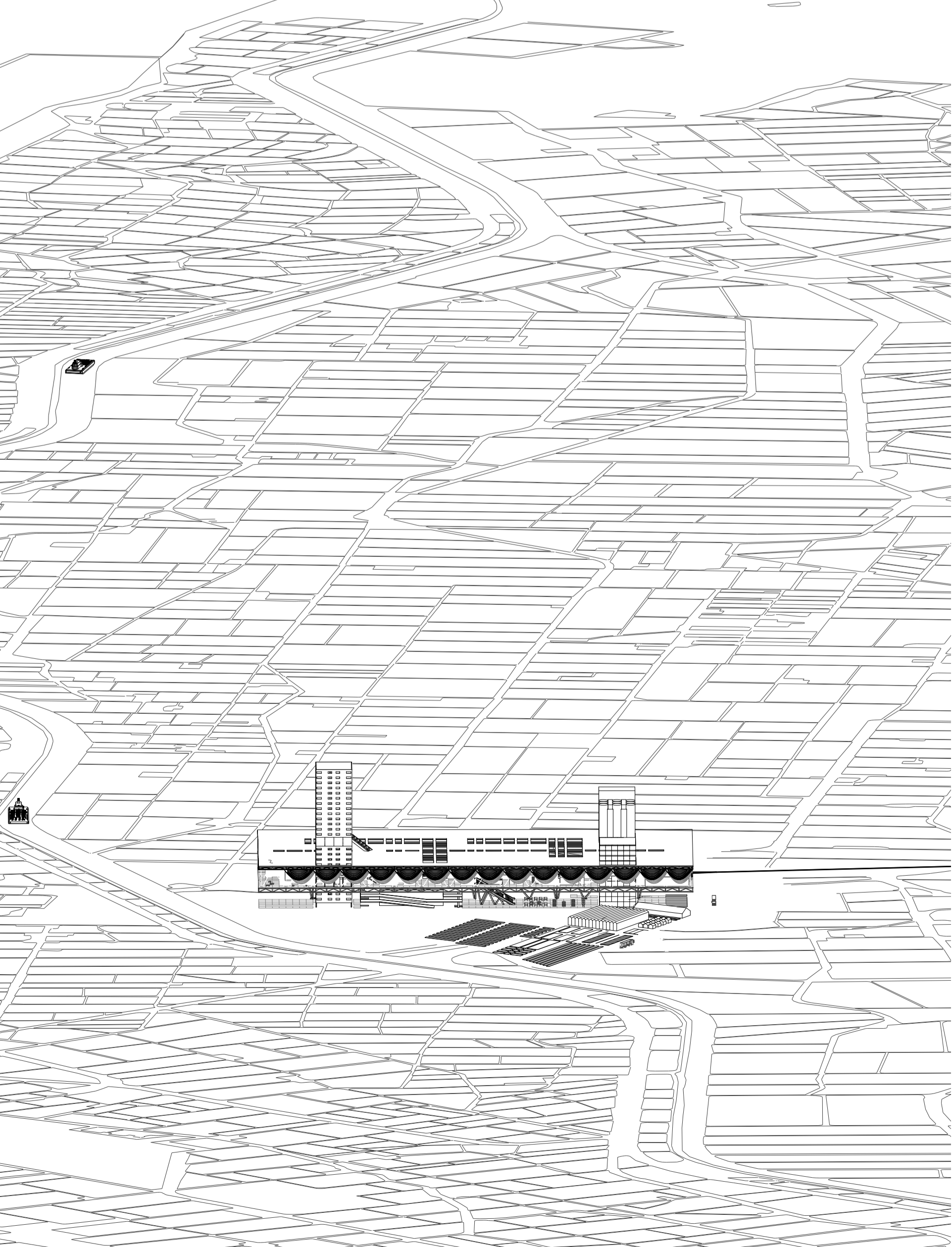
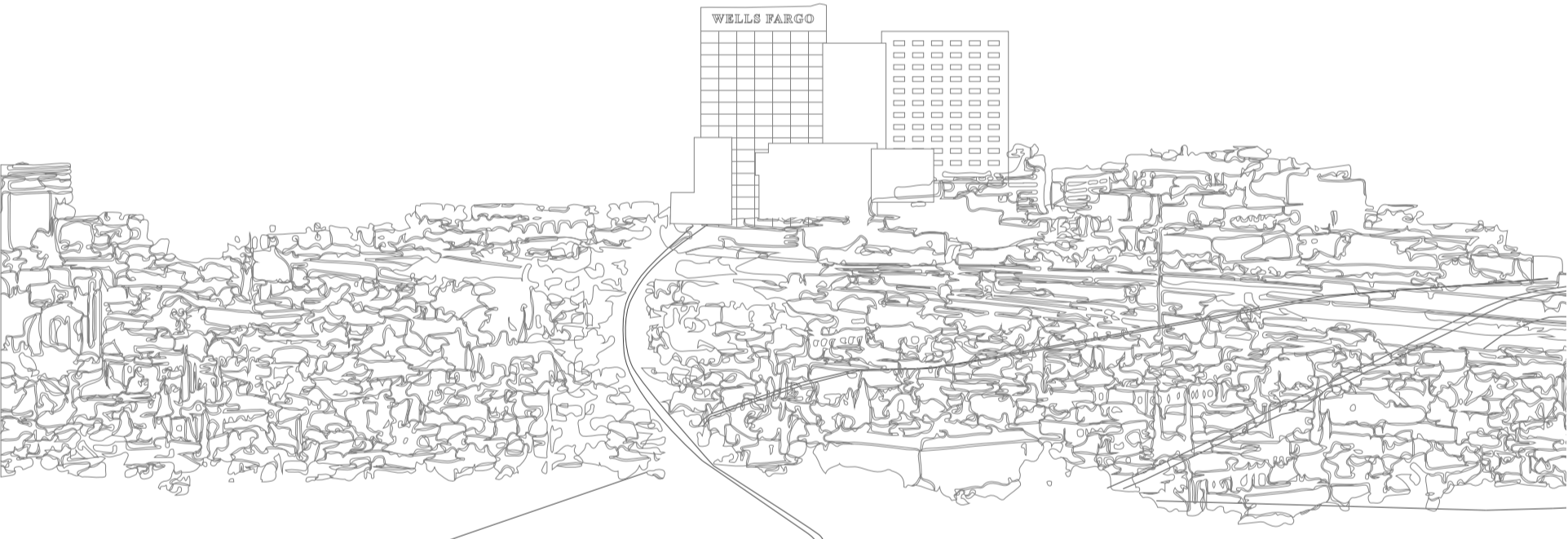
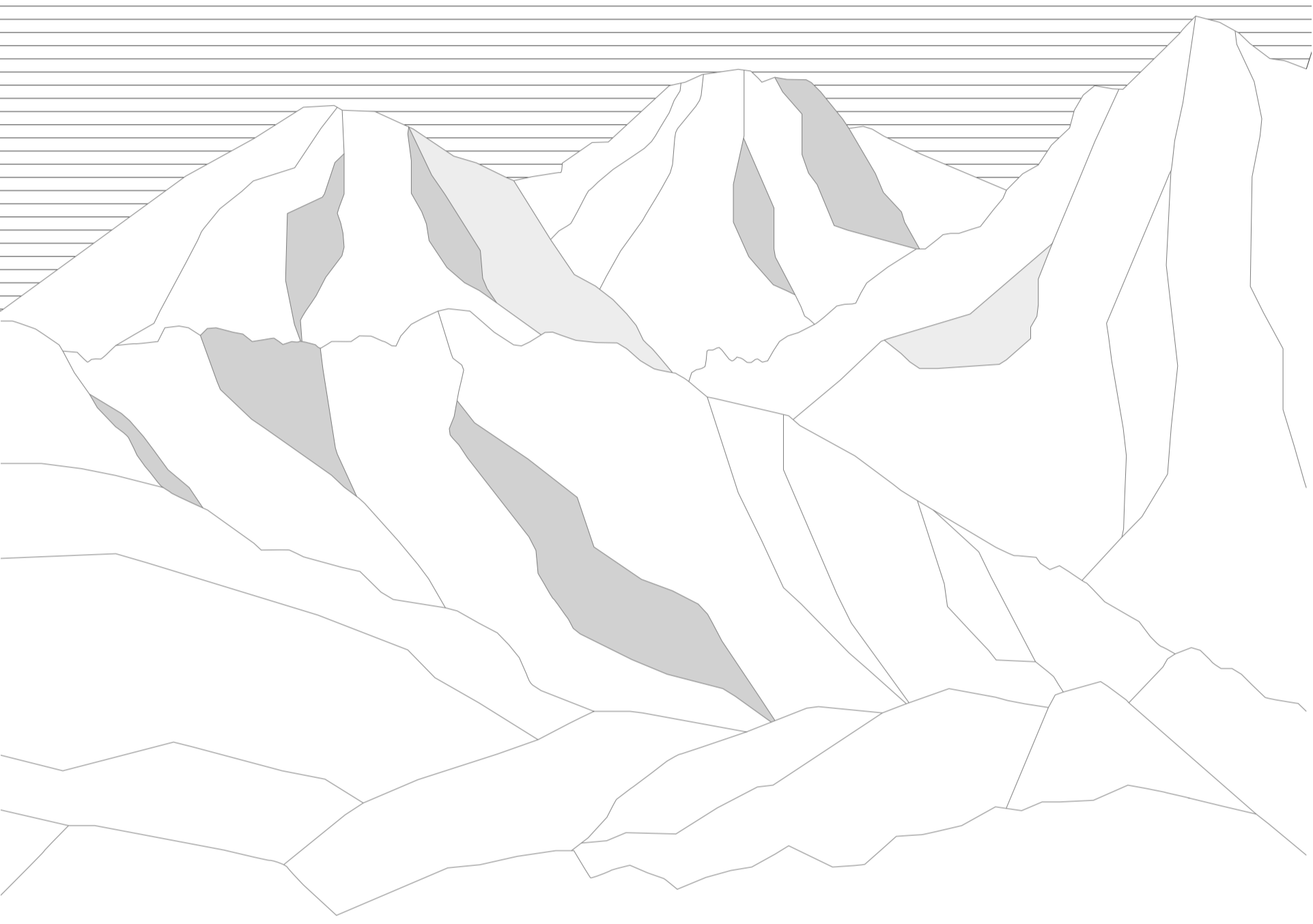


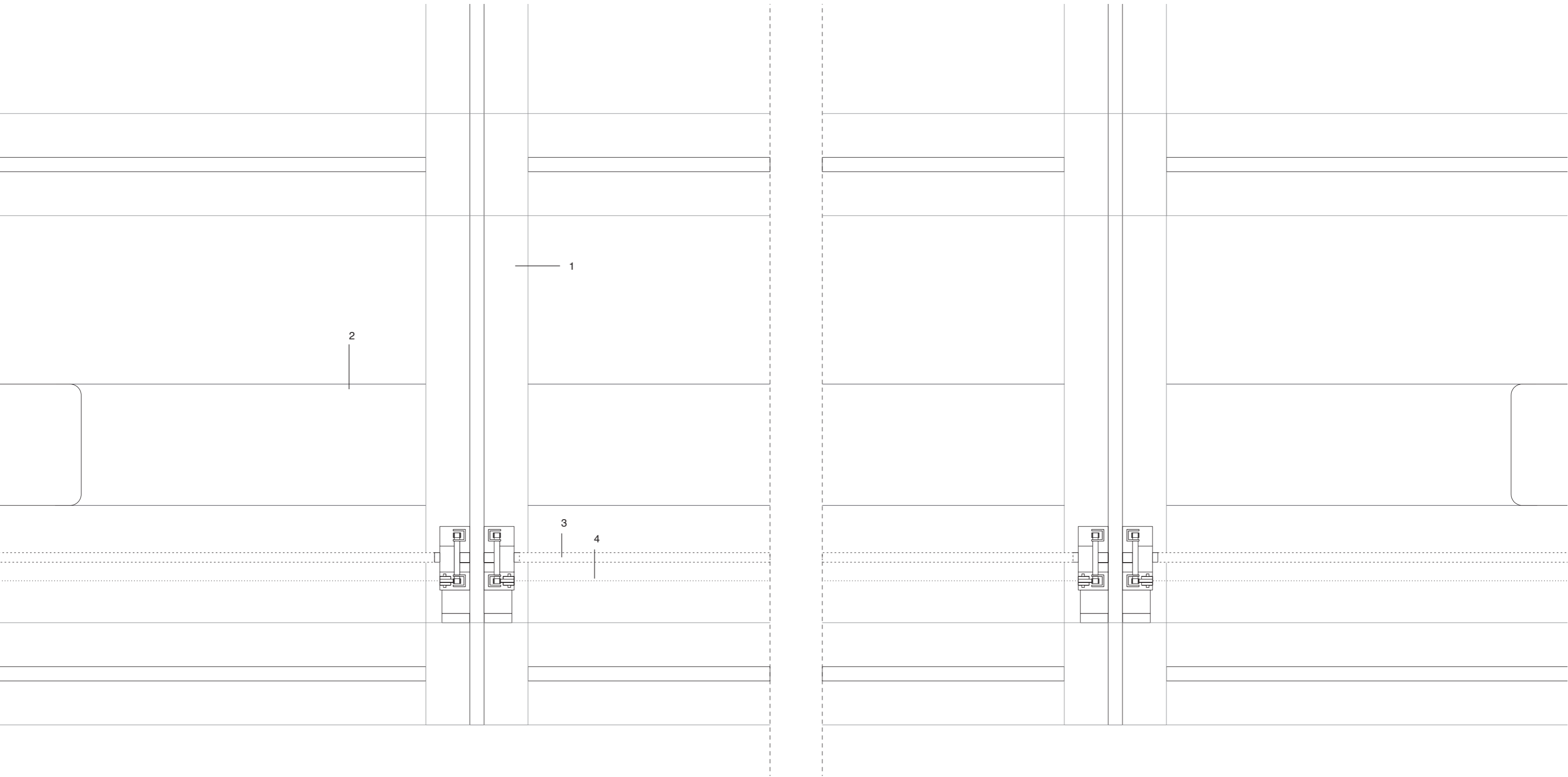
LARGE SITE PLAN
Food Valley

- Freight Railway
- Main Roads
- Residential Area
- Water
- Port

0 200





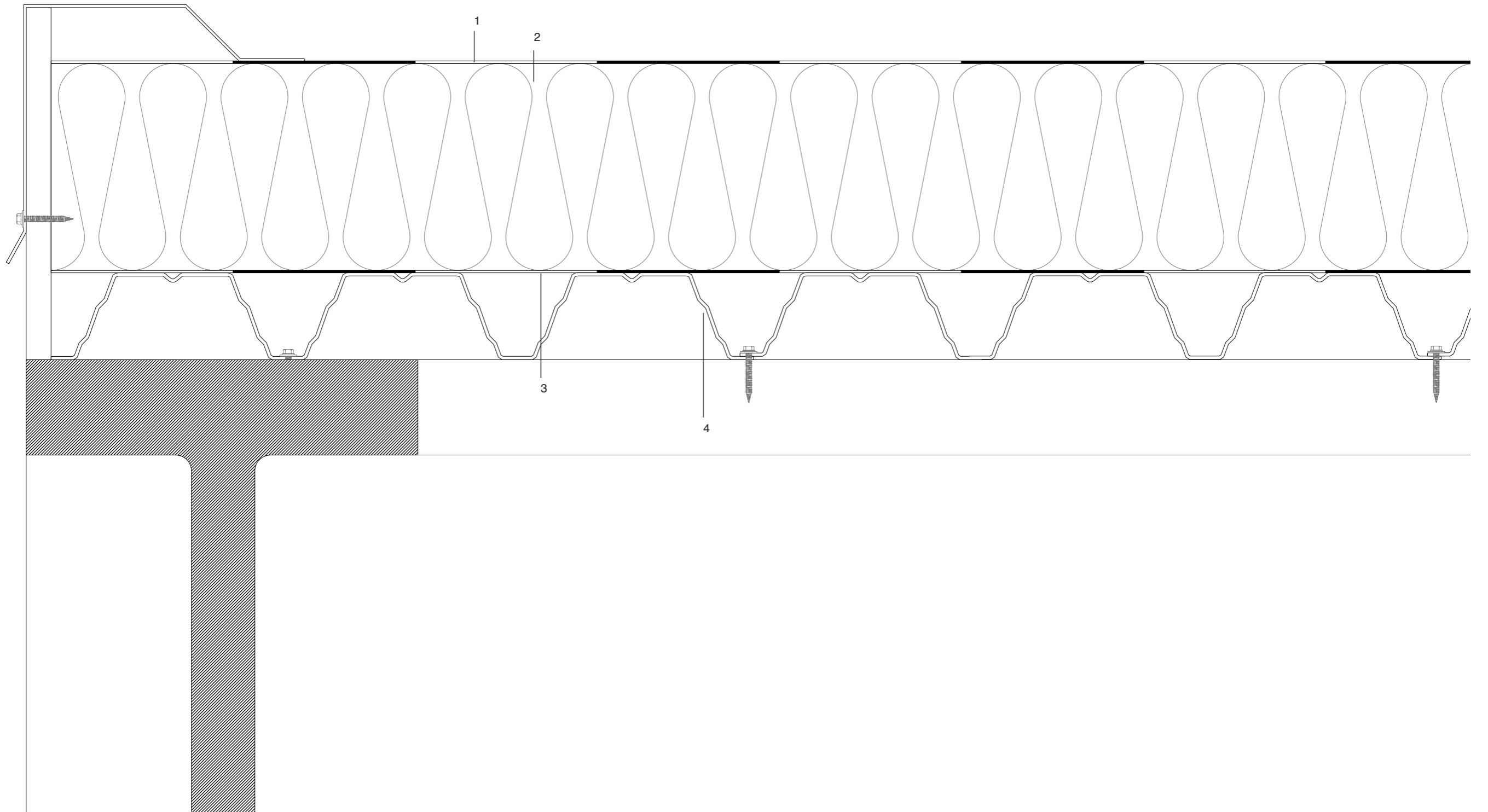


- 1. 473x546mm Steel T Section
- 2. 650x650mm Steel Square Tube
- 3. Driveshaft
- 4. Tent Fabric

HORIZONTAL SECTION

1:20



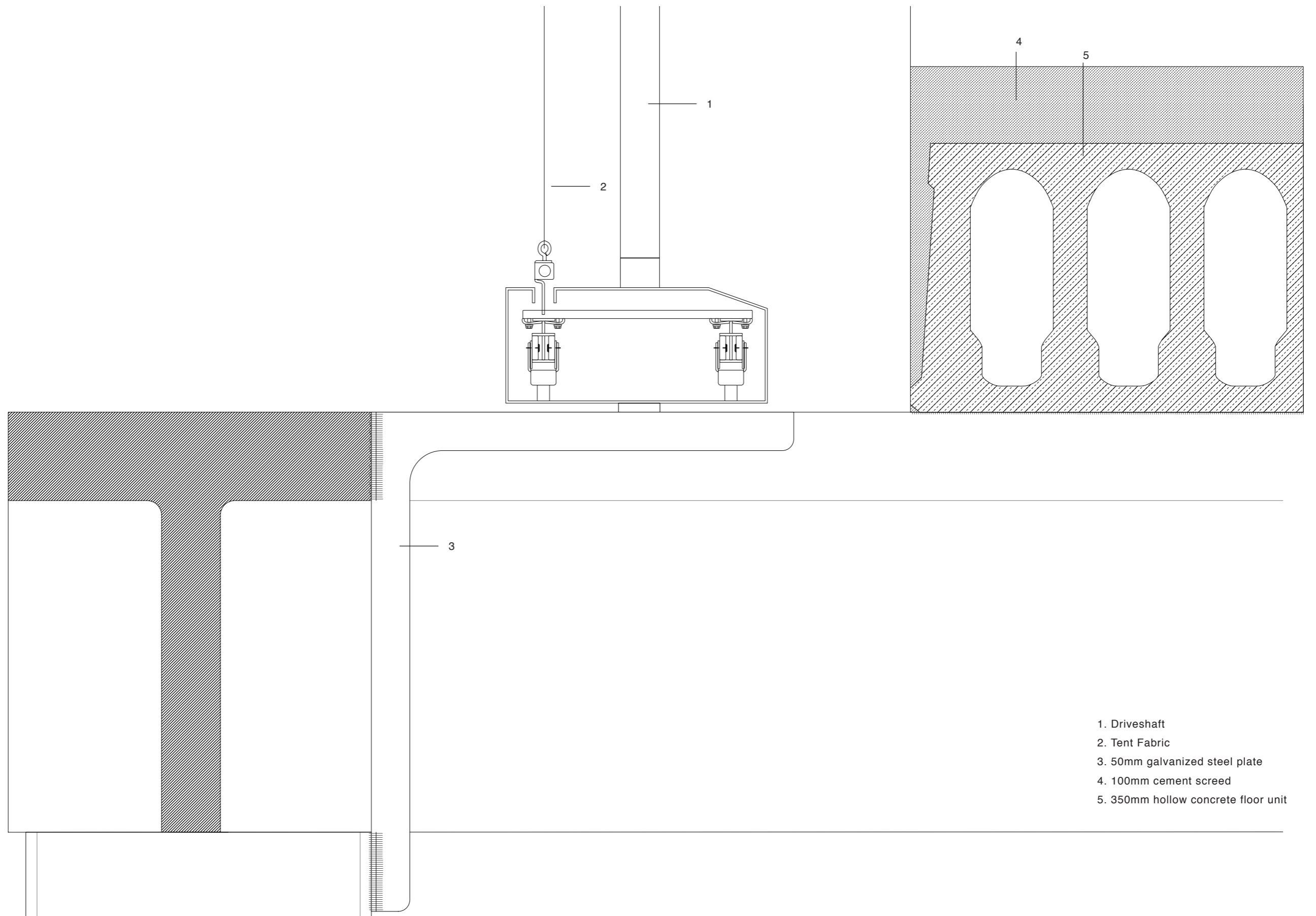


- 1. Plastic seeling layer
- 2. 250mm mineral wool thermal insulation
- 3. Vapour retarder
- 4. 100mm corrugated metal
- 5. 650×650mm Steel Square Tube



DETAIL NO. 1

1:5



- 1. Driveshaft
- 2. Tent Fabric
- 3. 50mm galvanized steel plate
- 4. 100mm cement screed
- 5. 350mm hollow concrete floor unit

0 250mm

DETAIL NO. 2

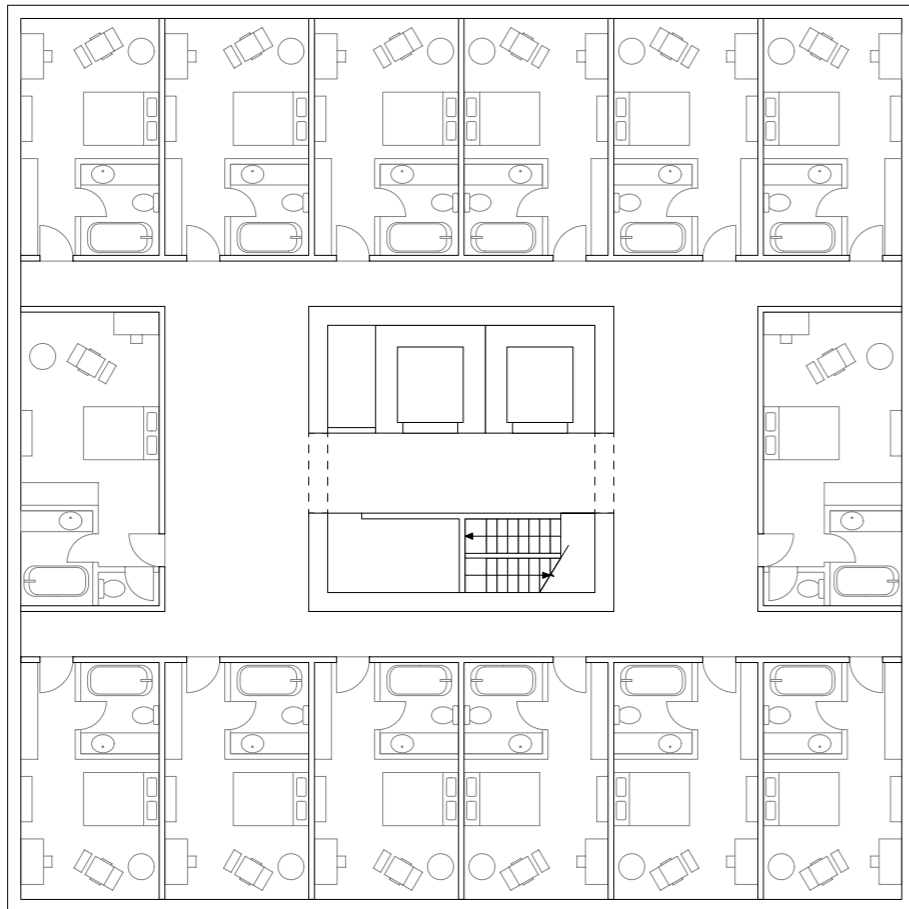
1:5



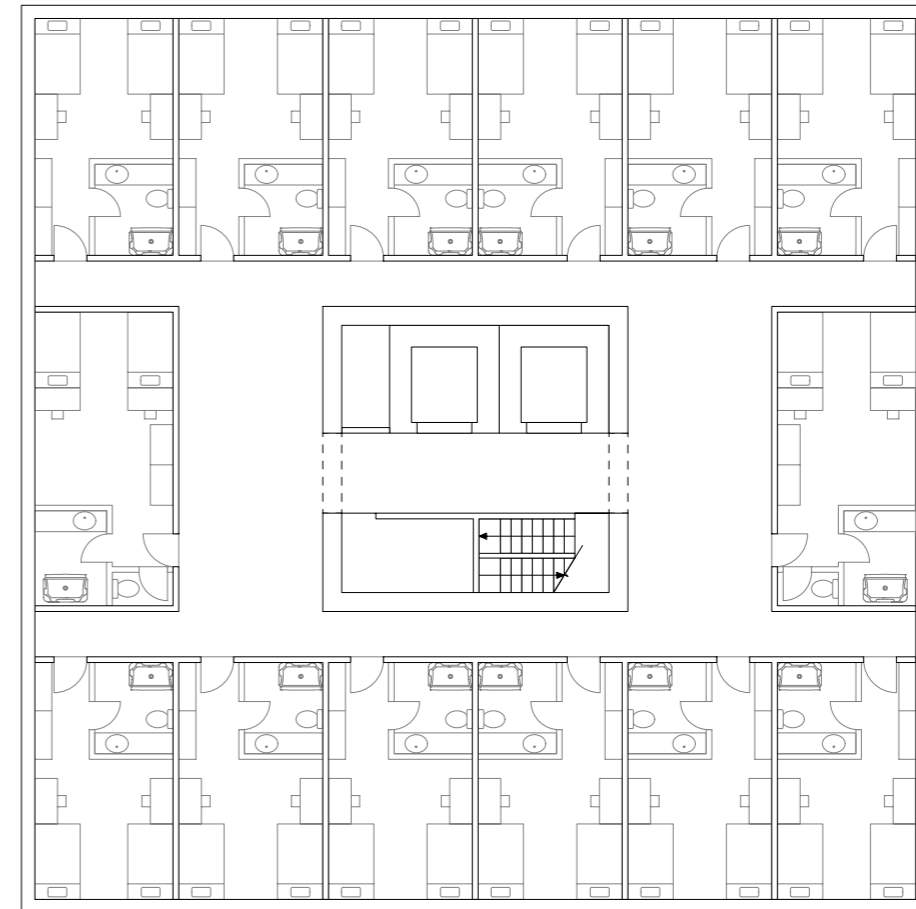
S I T E P L A N

1:5000





STANDARD FLOOR

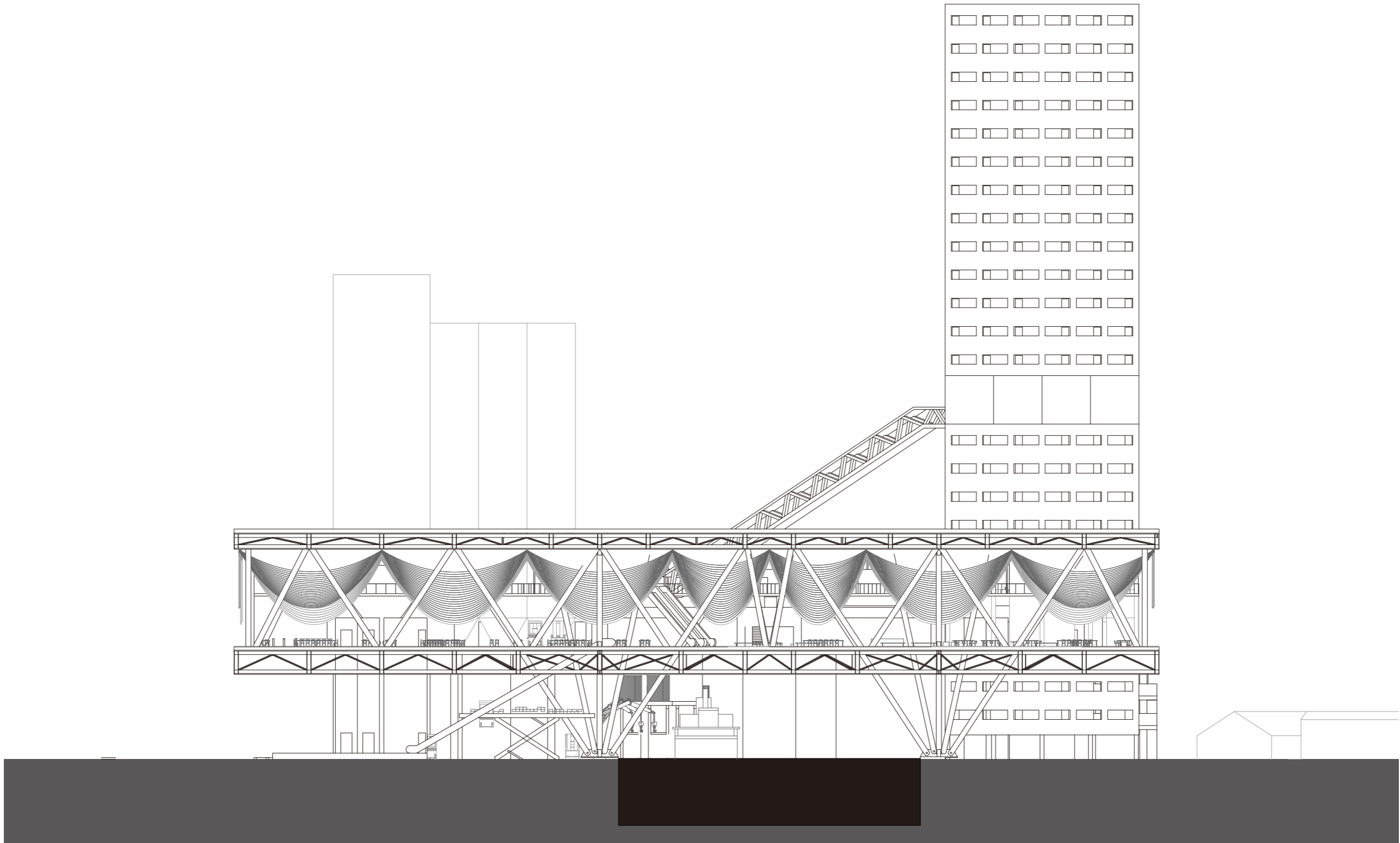


WORKER/ STUDENT FLOOR

HOTEL PLAN

1:200





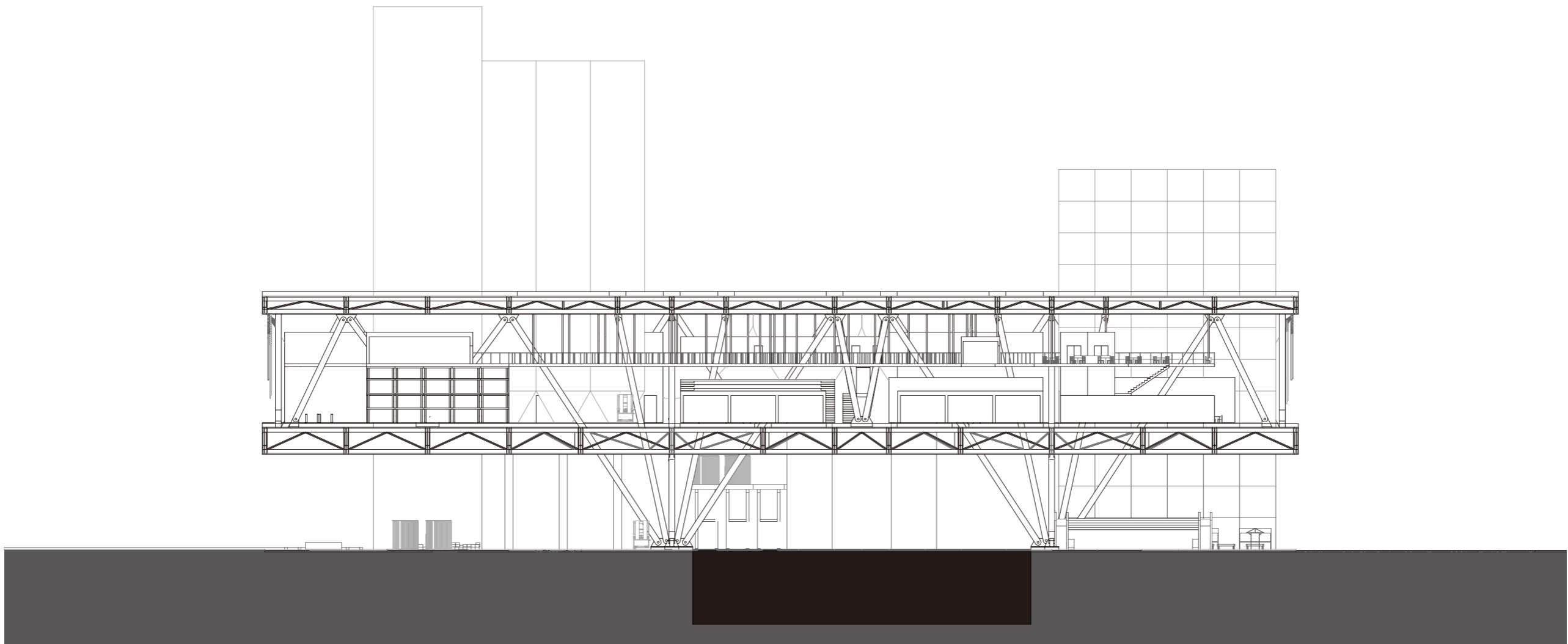
ELEVATION

1:500



0

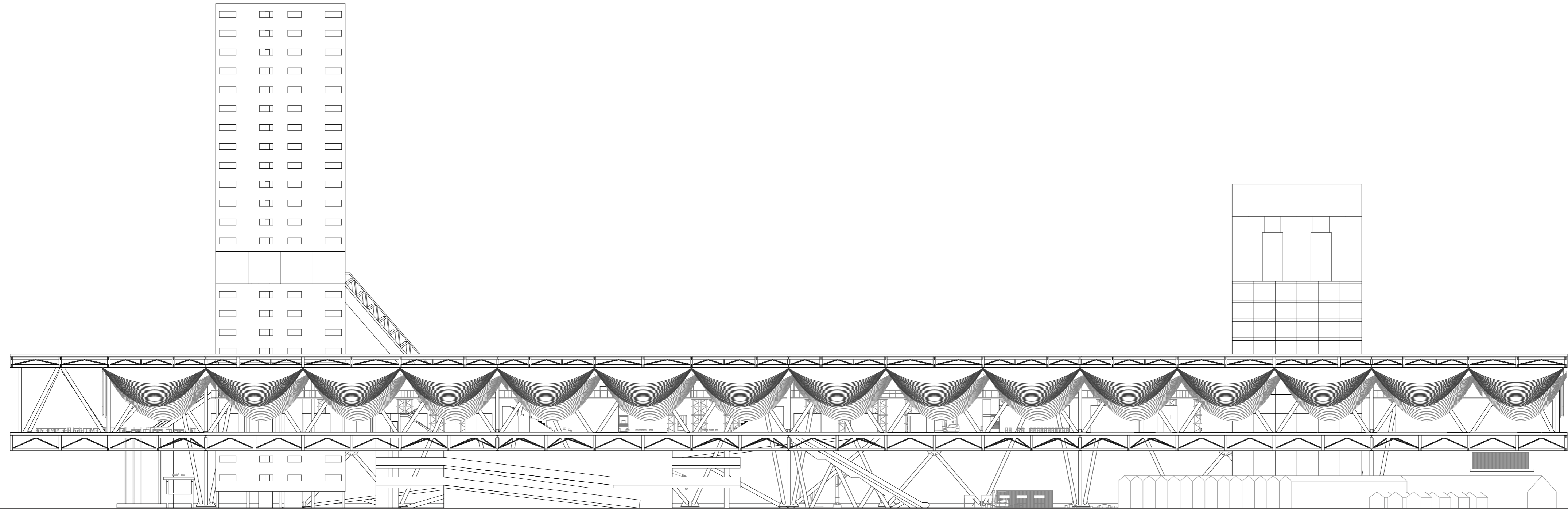
25M



SECTION

1:500

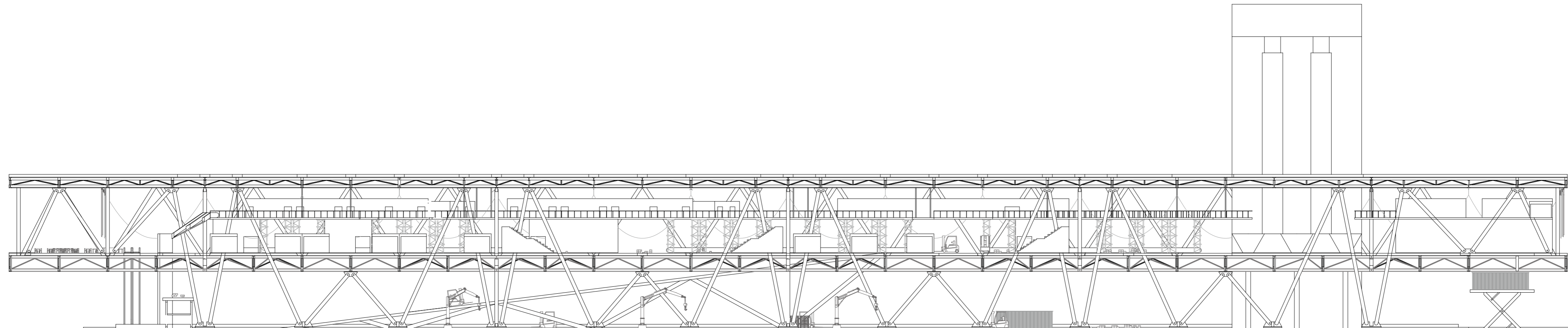
0 25M



ELEVATION

1:500



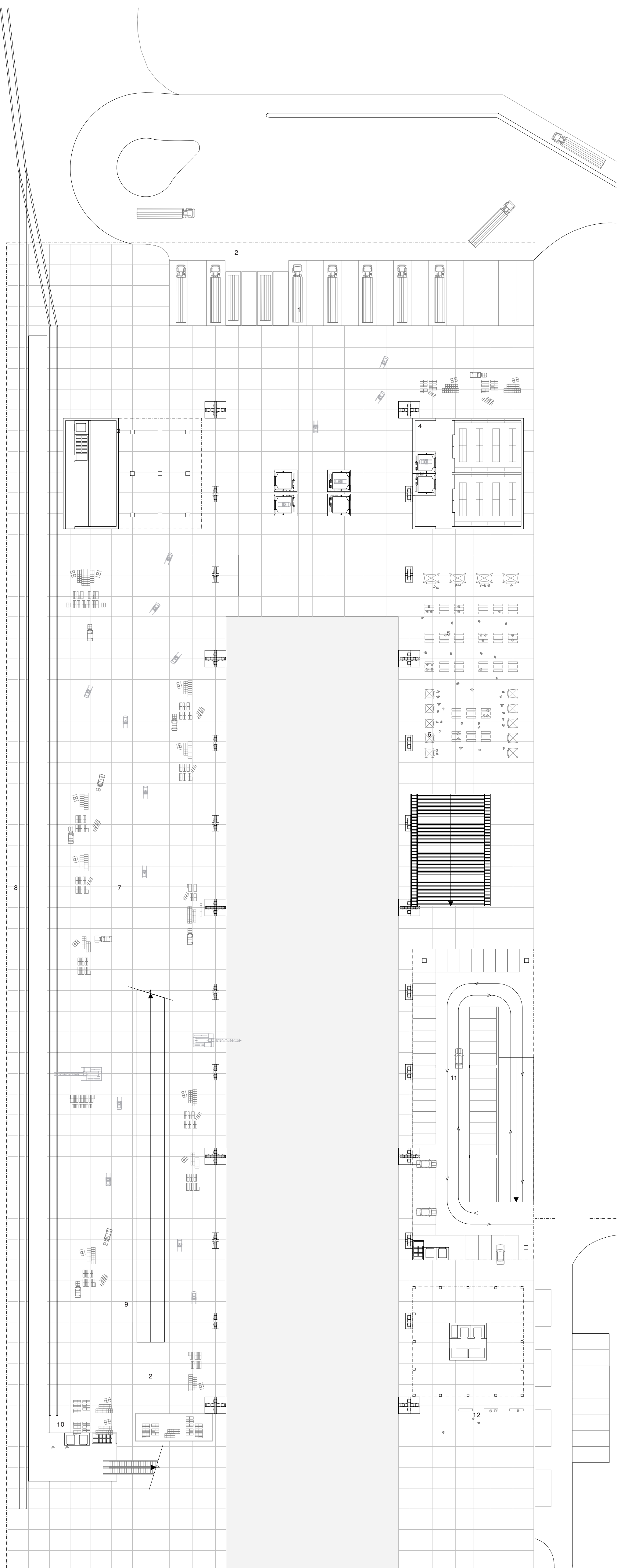


SECTION

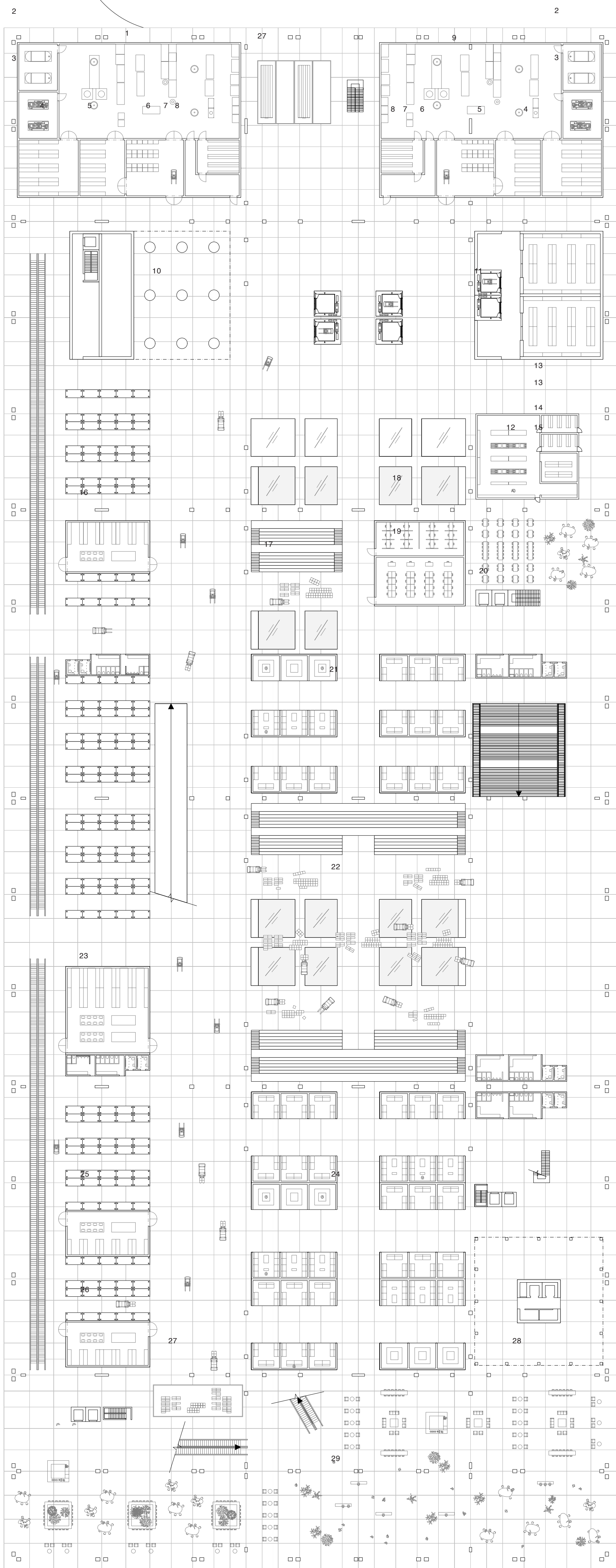
1:500



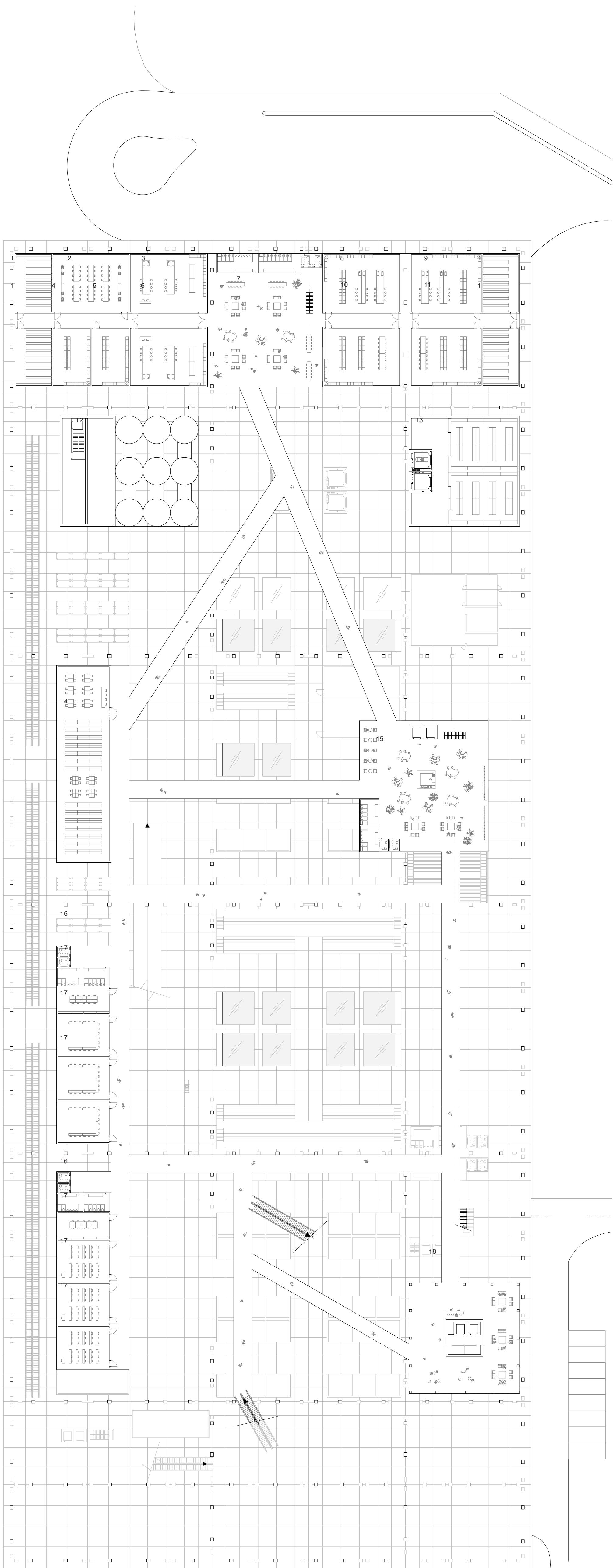
25M



1. Truck Loading Dock
2. Elevator Platform
3. Grain Elevator
4. Refrigerated Storage
5. Variable Event Space
6. Stairs to Food Floor
7. Train / Boat Loading Dock
8. Train Platform
9. Fork Lift Slope to Food Floor
10. Escalator to Food Floor
11. Car Parking
12. Farm Shuttle Bus Stop



- | | | |
|------------------------------------|---|---------------------------------|
| 1. Can Floor | 13. Locker | 23. Fruit/Vegetable Preparation |
| 2. Utility | 14. Storage | 24. Middlemen's Stores |
| 3. Maintenance | 15. Washing Room | 25. Meat Preparation |
| 4. Storage | 16. Grain Preparation | 26. Dairy Preparation |
| 5. Finished Storage | 17. Grain Auction Hall/ Farmer's Forum Capacity:430 | 27. Elevator Platform |
| 6. Shipping / Receiving | 18. Farmer's Consultation | 28. Visitor's Lounge Cafe |
| 7. Reception | 19. Office | 29. Terrace Space |
| 8. Locker | 20. Stairs / Elevator to Catwalk | |
| 9. Jar Floor | 21. Middlemen's Stores | |
| 10. Grain Elevator Receiving Point | 22. Vegetable Fruit Auction Hall / Convertible Cultural Hall Capacity:2200 (1100 each) | |
| 11. Refrigerated Storage | | |
| 12. Canteen Kitchen | | |



- | | |
|---|-------------------------------------|
| 1. Locker | 12. Grain Elevator |
| 2. New Food Valley Processed Goods Development Center | 13. Refrigerated Storage |
| 3. Water Management | 14. Archive |
| 4. Pest Hygiene / Control | 15. Canteen Eating Space |
| 5. Product Inspection | 16. Farm School Office |
| 6. Longterm Irrigation Development | 17. Farm School Class Room |
| 7. Research Center Lounge | 18. Workers, Student Lobby / Lounge |
| 8. Organic Farming Development | |
| 9. Breed Improvement | |
| 10. Genetics | |
| 11. Poly Culture Development | |