

THE ART FACTORY

THE CULTURAL CENTRE FOR THE FINE AND PERFORMING ARTS

P5 PRESENTATION

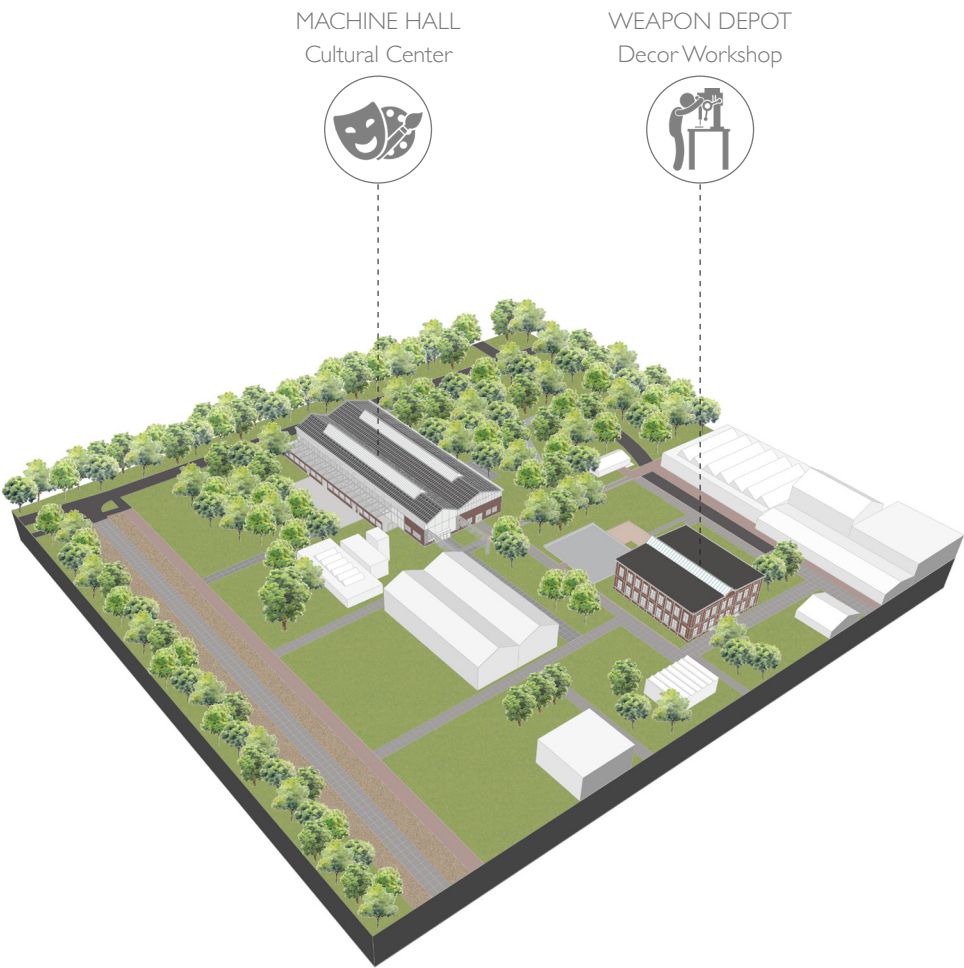
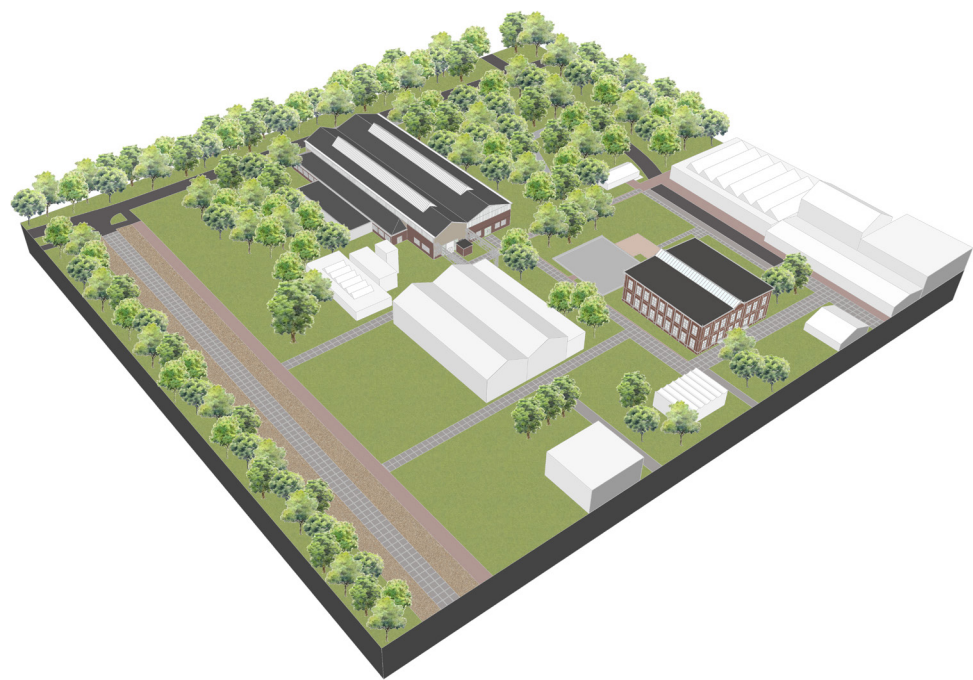
Melanie Kwaks





picture by: Laurens Kuipers







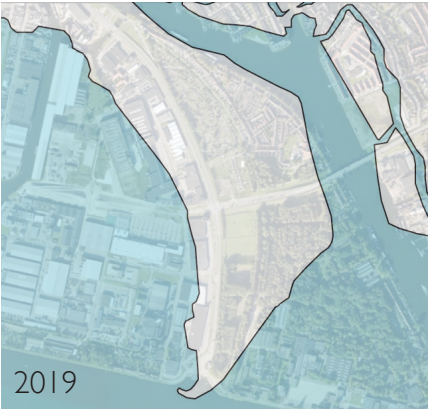
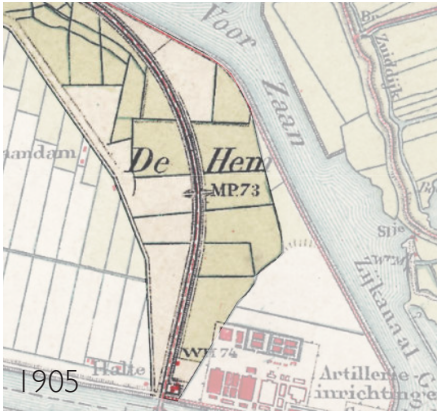
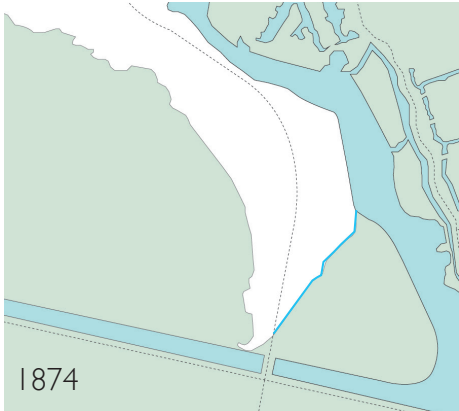
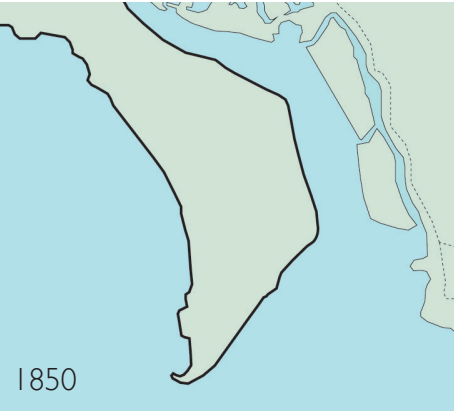
- 1 - Context
- 2 - Cultural Value
- 3 - Design
- 4 - Reflection

- 1 - Context
- 2 - Cultural Value
- 3 - Design
- 4 - Reflection

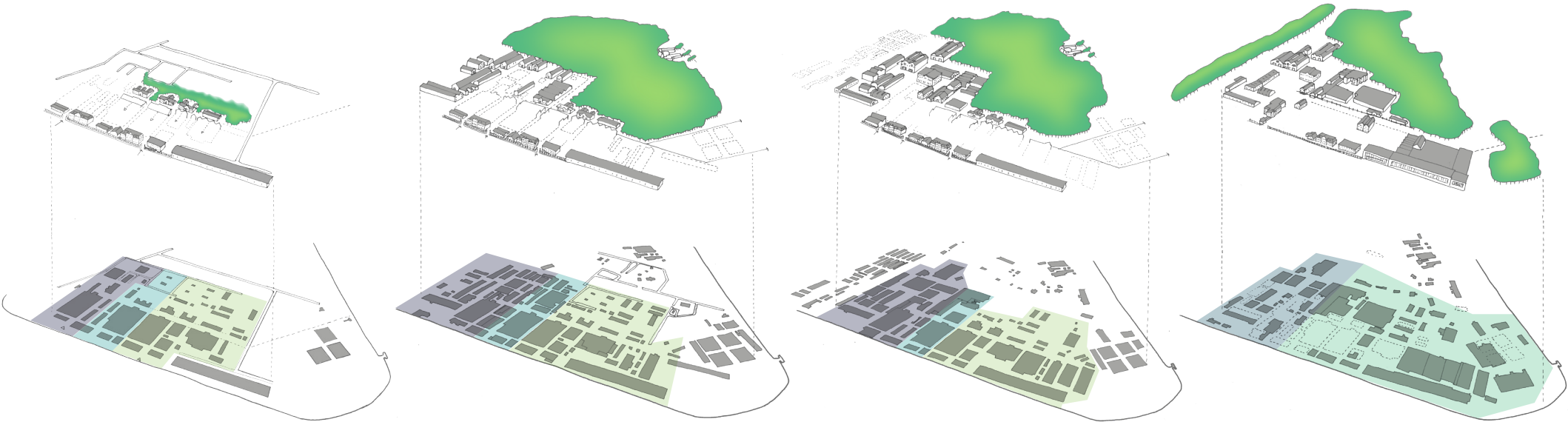
How did the functional logic of the 'Artillerie Inrichtingen' influence the character that Campus North has today?



image from: Presentation Falmboom 19 march







1903

1924

1941

2010

WEST

MIDDLE

EAST

NV GEREEDSCHAPSWERKTUIGENINDUSTRIE

WEAPON FACTORY

CARTRIDGE FACTORY

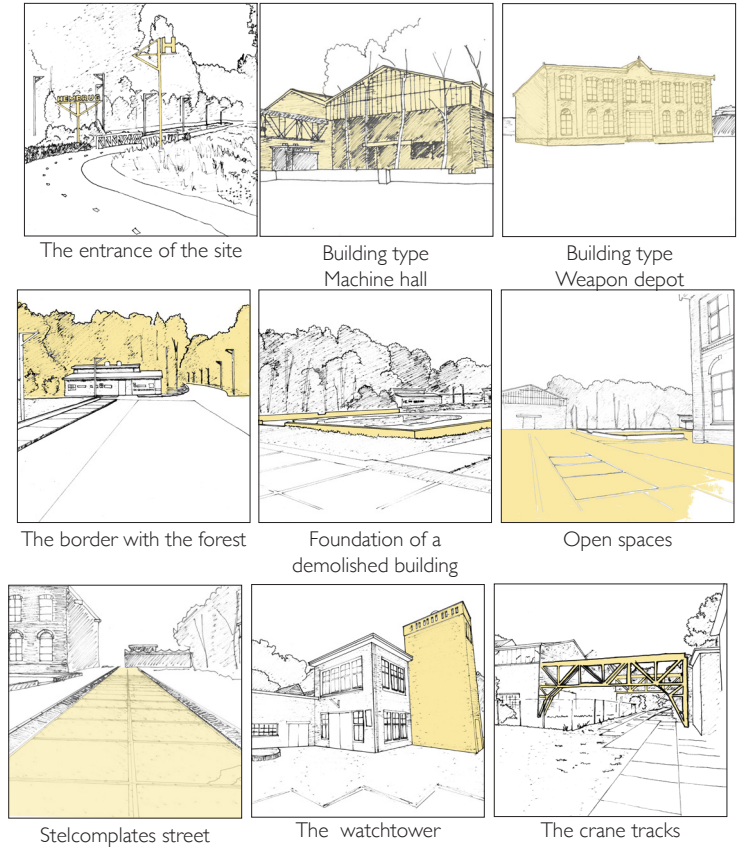
MUNITION FACTORY

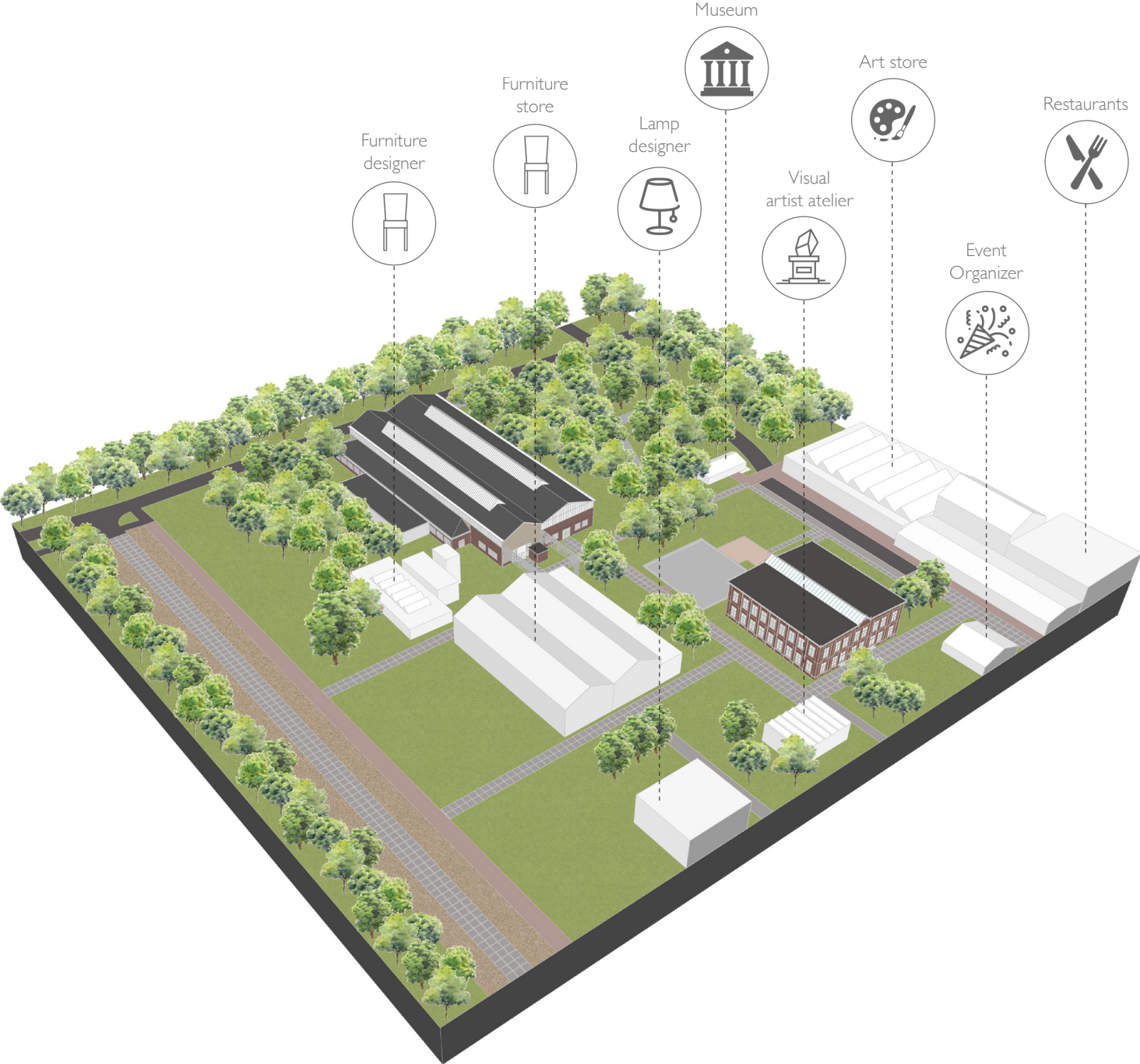
EUROMETAAL



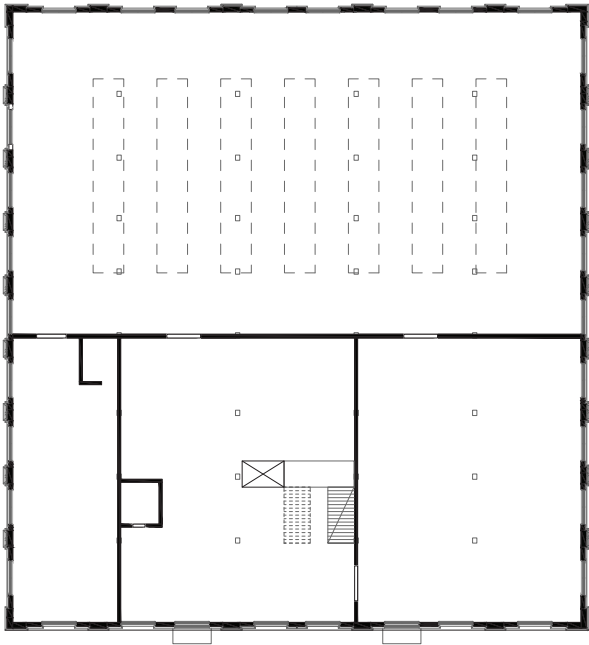
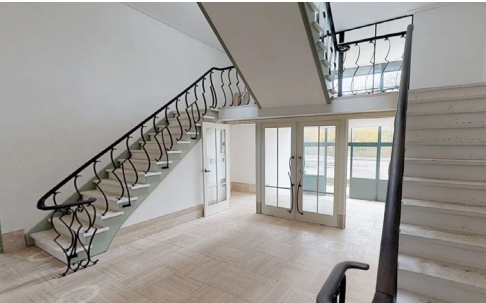


Latin meaning of Campus: open space or field

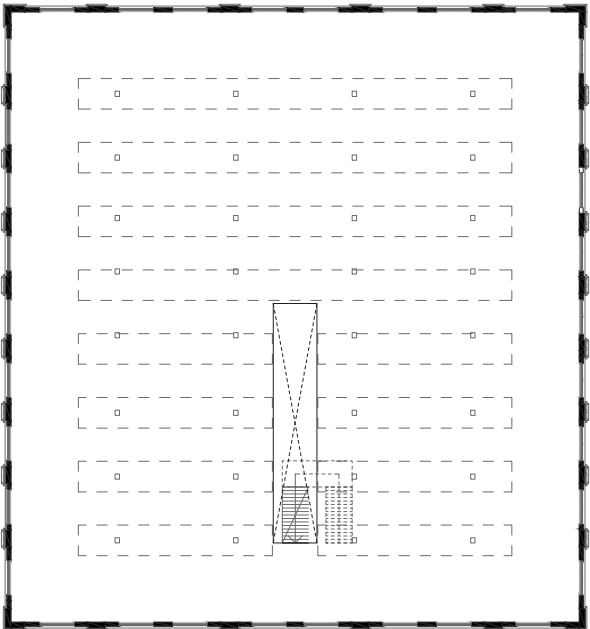




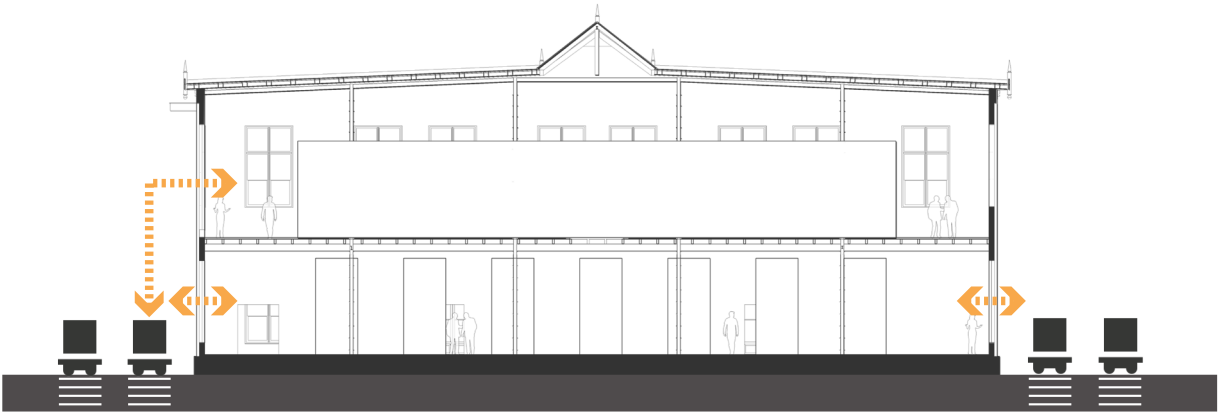
1899 STORAGE BUILDING



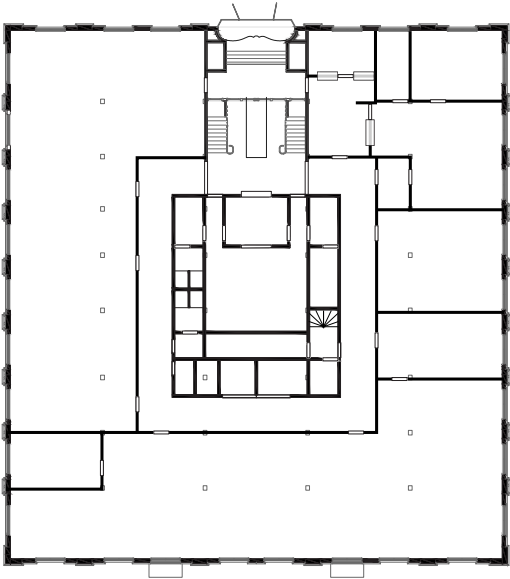
Ground floor



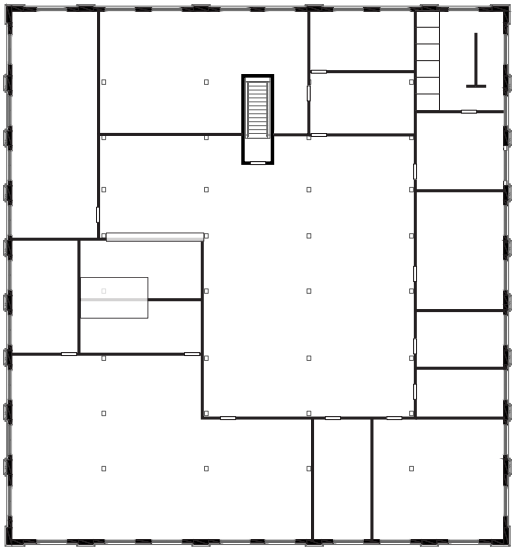
First floor



1954 OFFICE BUILDING

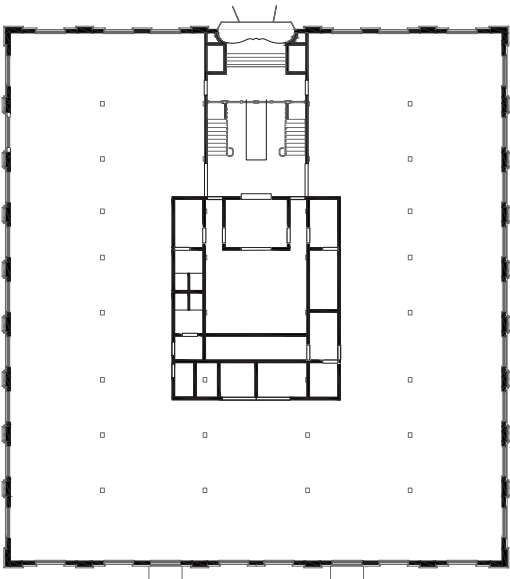


Ground floor

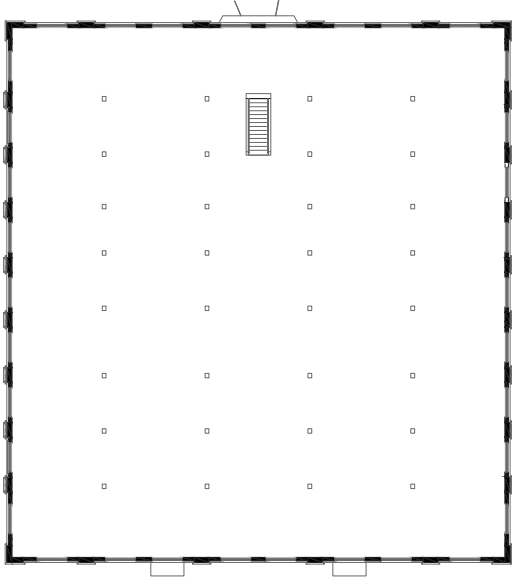


First floor

2015 RENOVATION

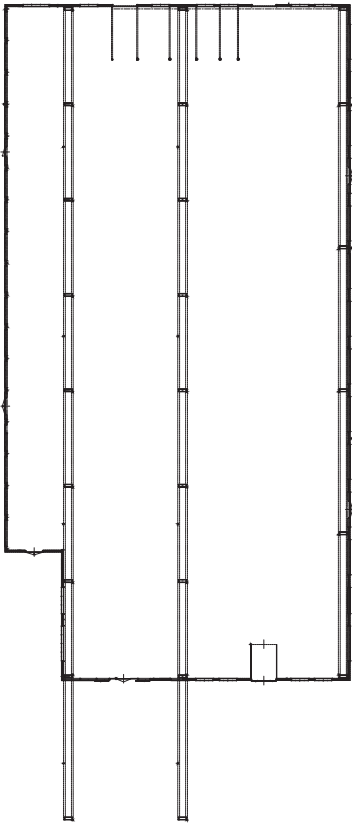


Ground floor

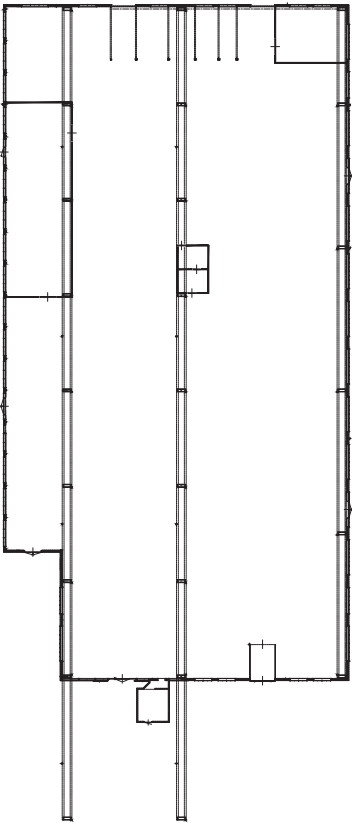


First floor

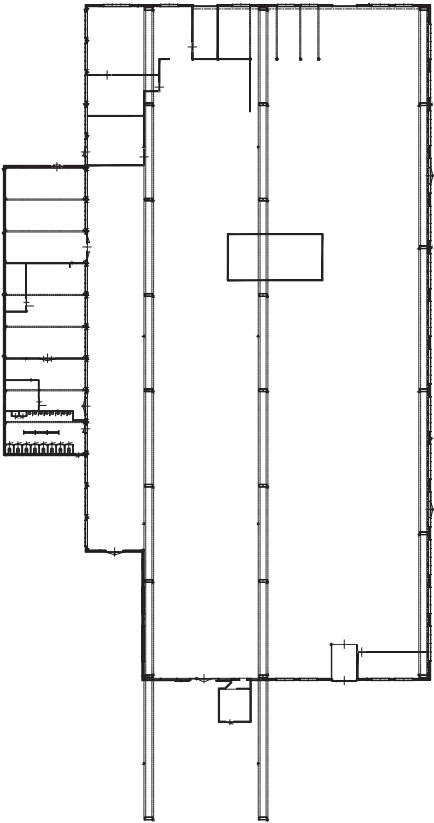




1936

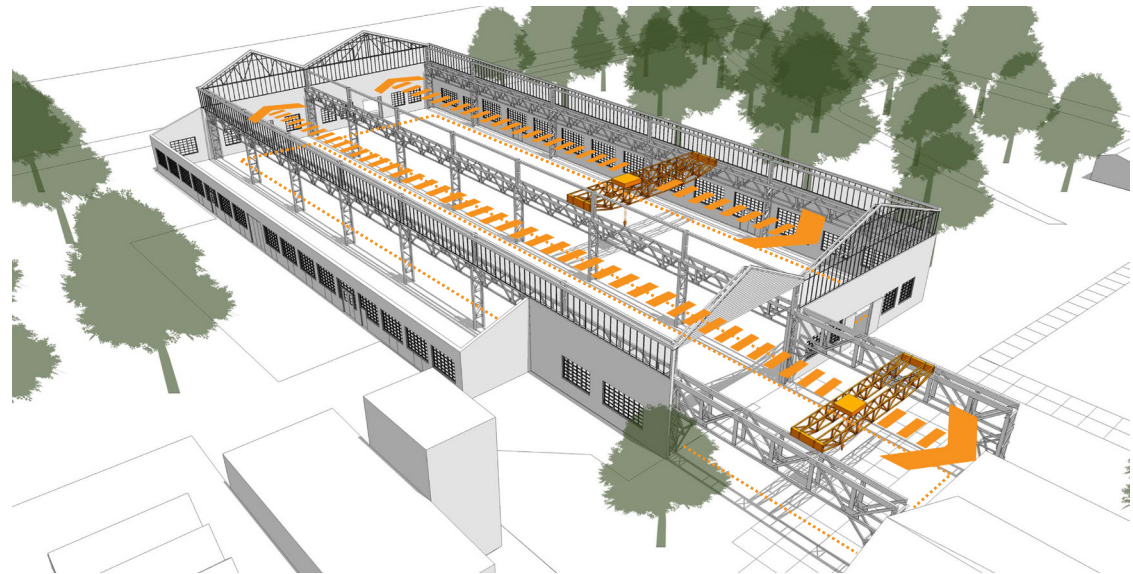
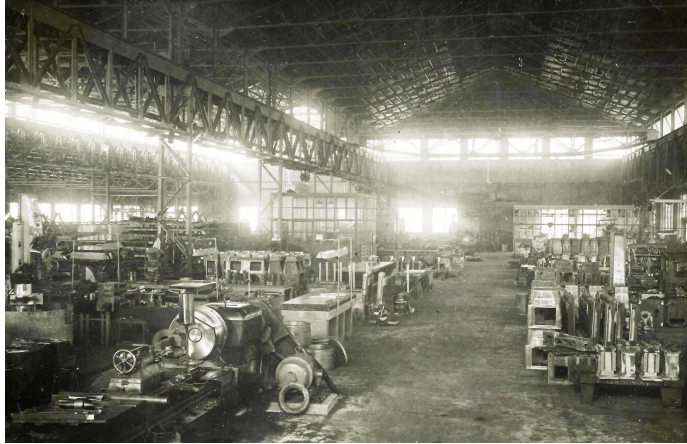


1954



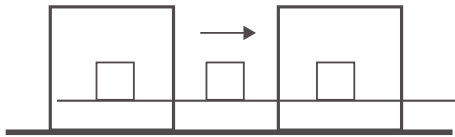
1975





How did the functional logic of the 'Artillerie Inrichtingen' influence the character that Campus North has today?

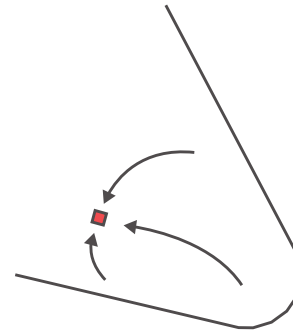
CONCLUSION:



The development of campus north originates from the functional logic of the production line of the factories.



The once functional objects are now the landmarks of Campus North.



The transformation of the weapon depot to the headquarters office influenced Campus North. Center position.



The function of the machine hall was a strong influence for its appearance.

SPIRIT OF THE PLACE:

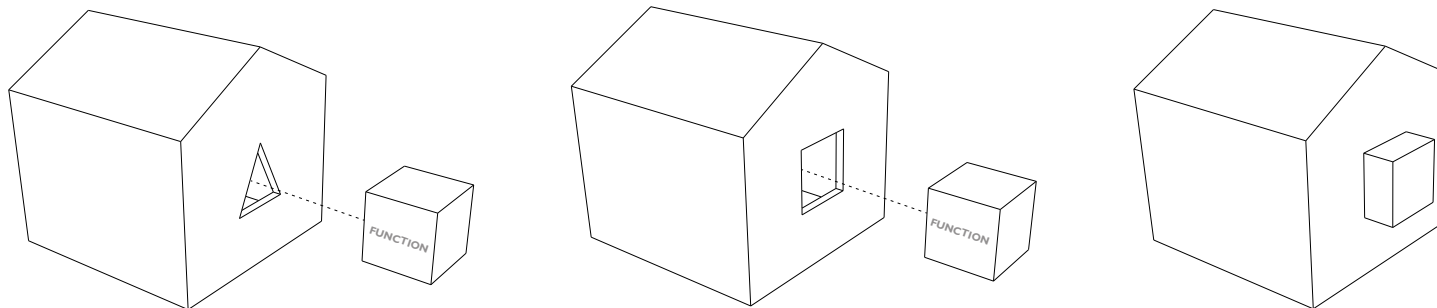
Form follows Function
The Function left but the Form remains

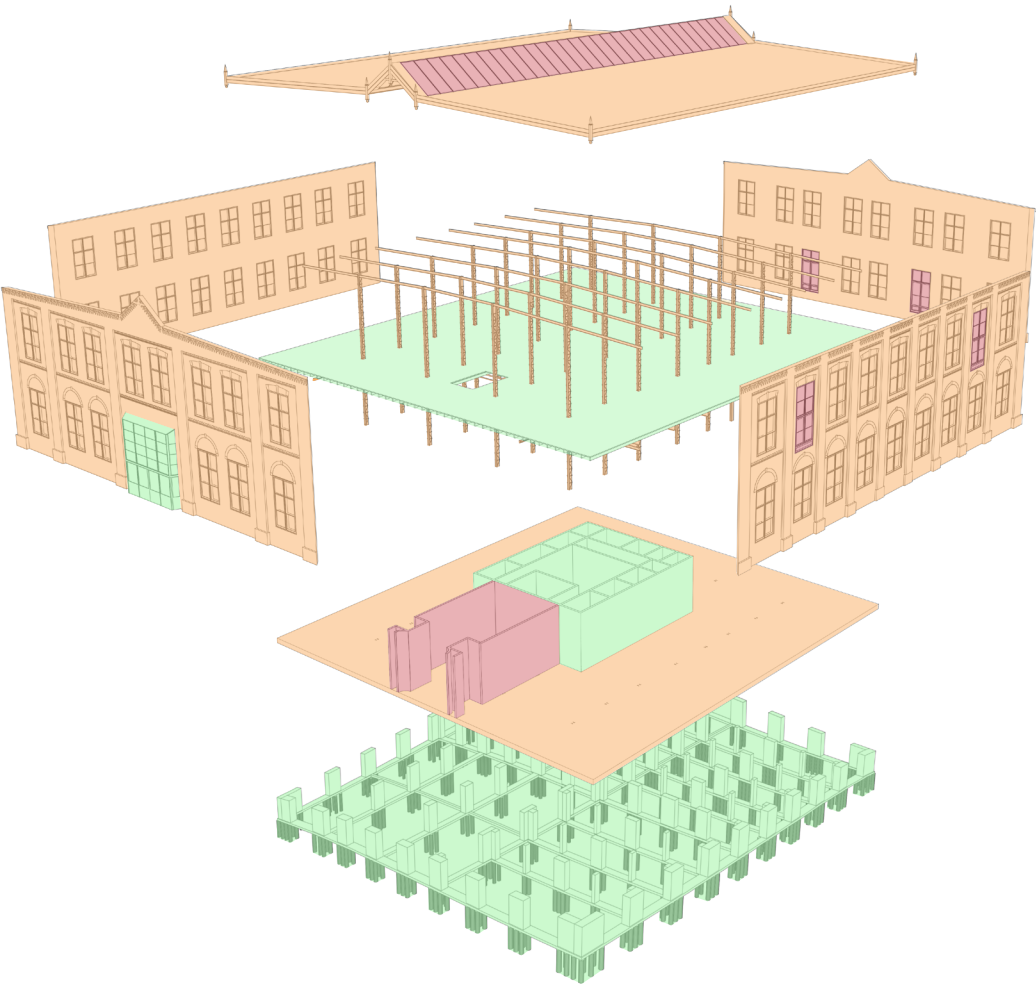
- 1 - Context
- 2 - Cultural Value**
- 3 - Design
- 4 - Reflection

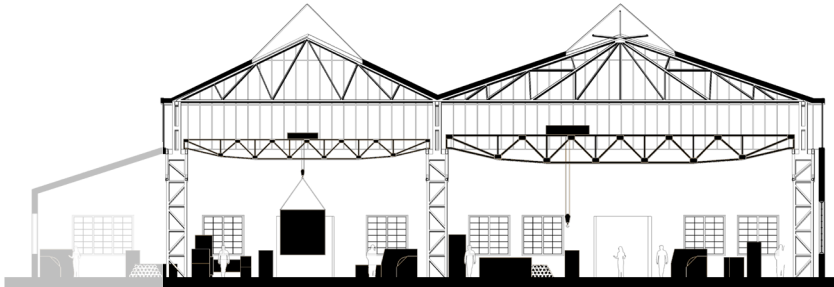
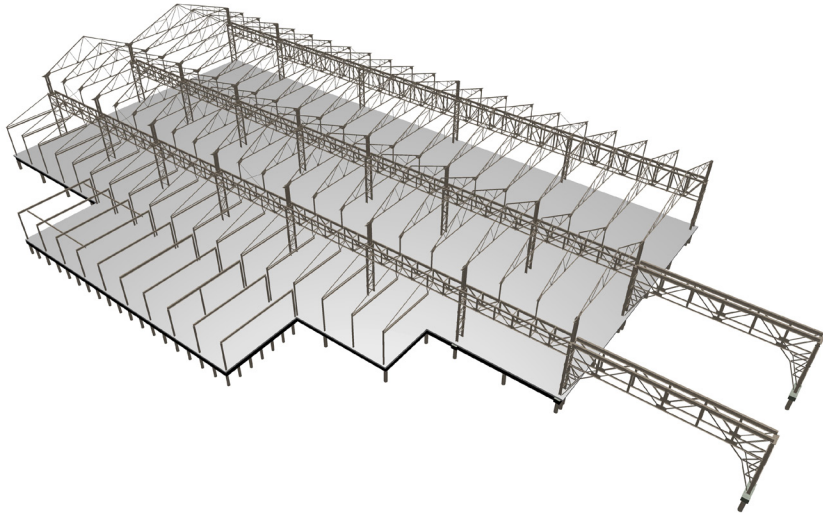
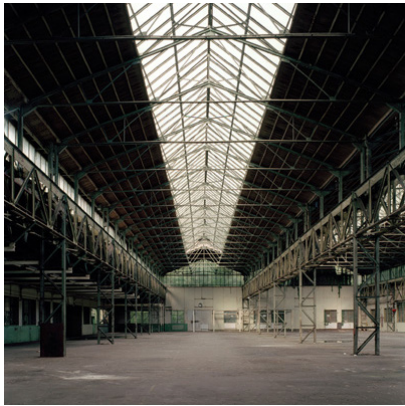
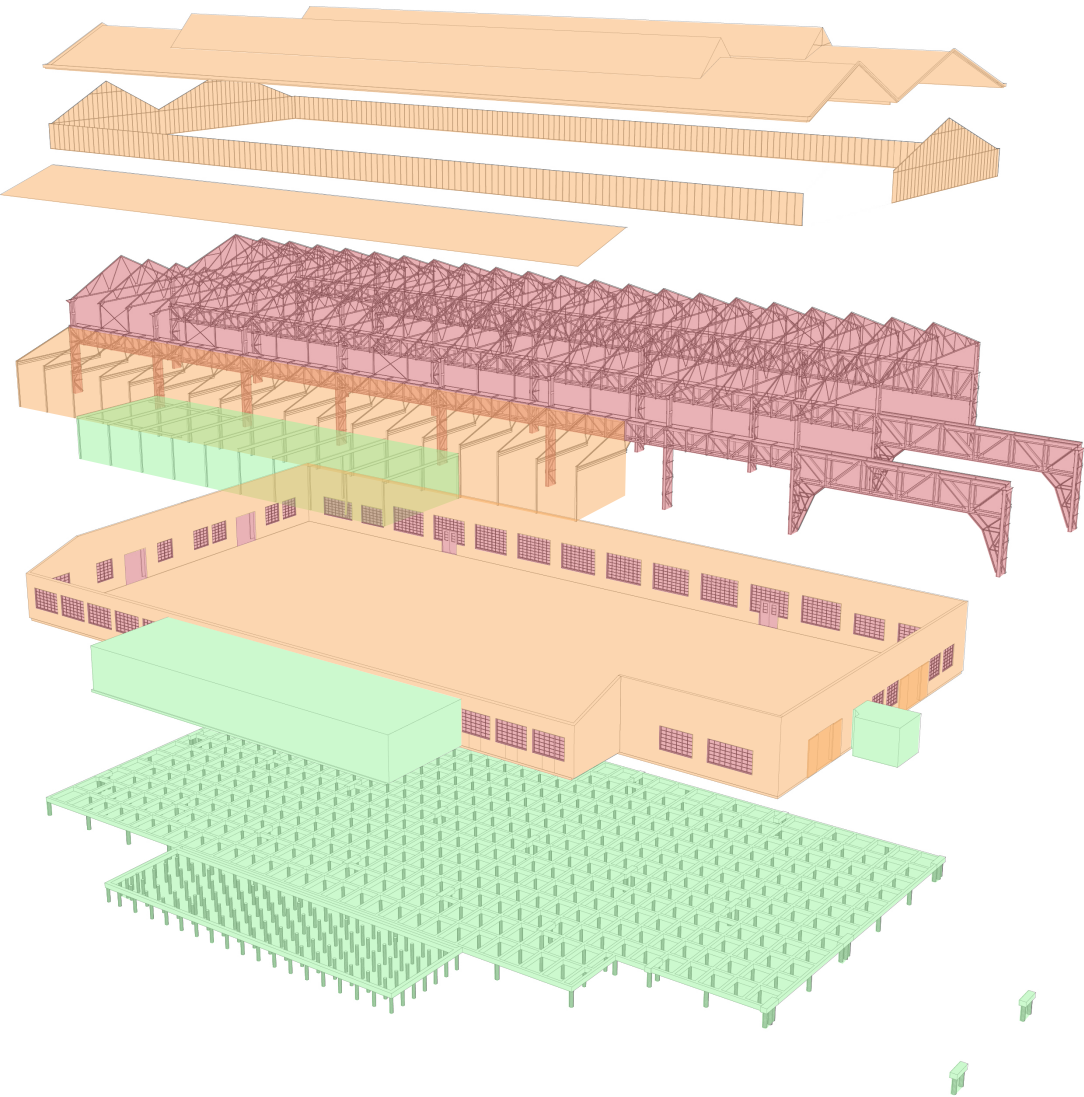
I believe that a building must be able to transform when the function of that building changes.

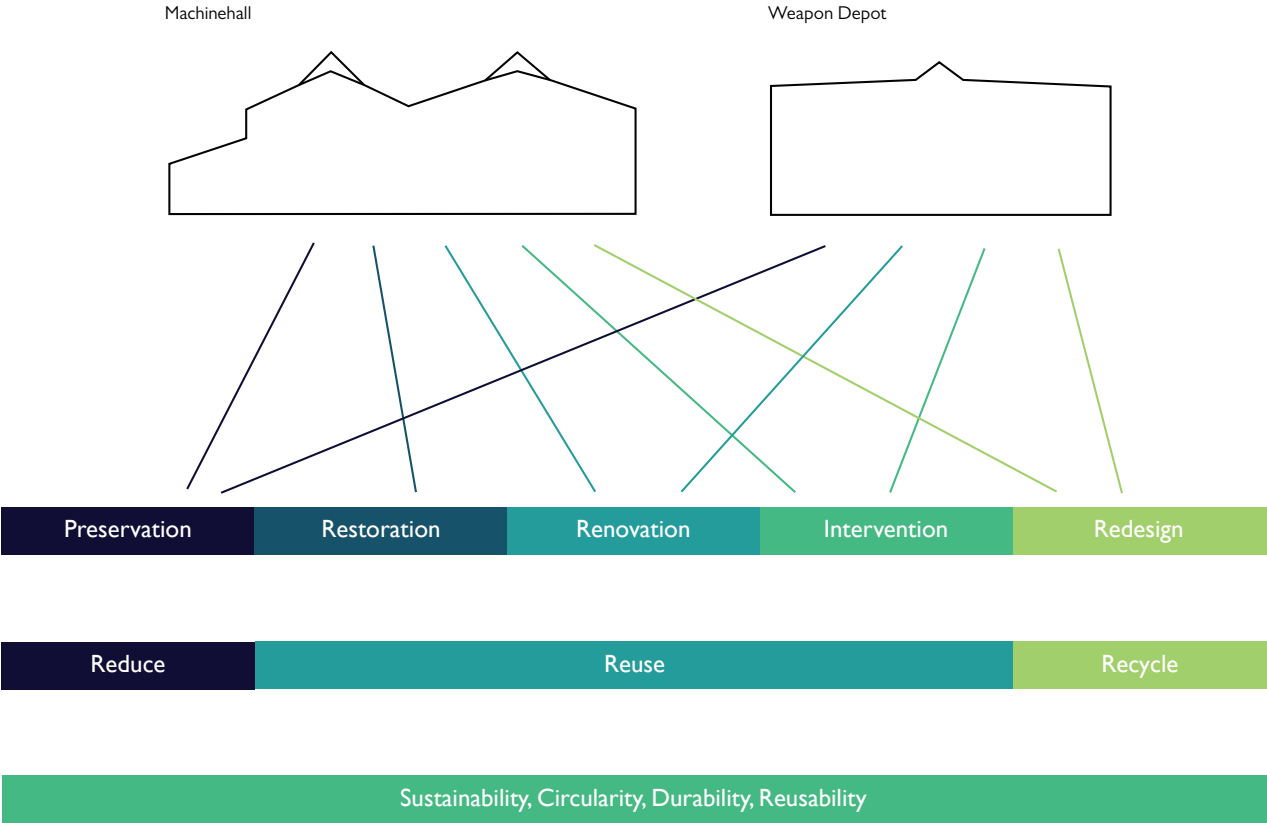
There is often a mismatch with the existing function and the new function, therefore some interventions to that building are required.

This position is in line with the spirit of the place. The buildings of Hembrug changed when a production line changed.

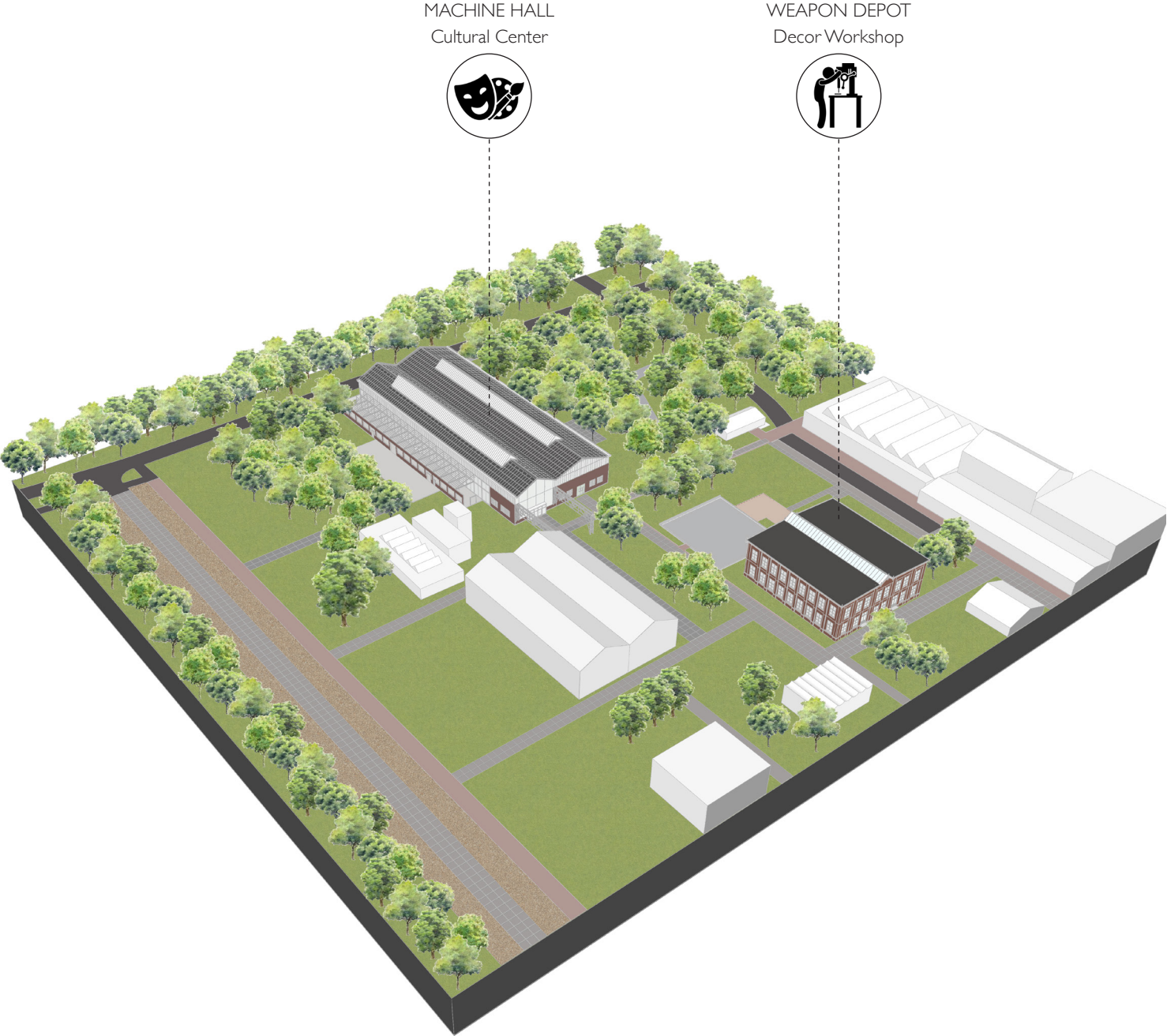


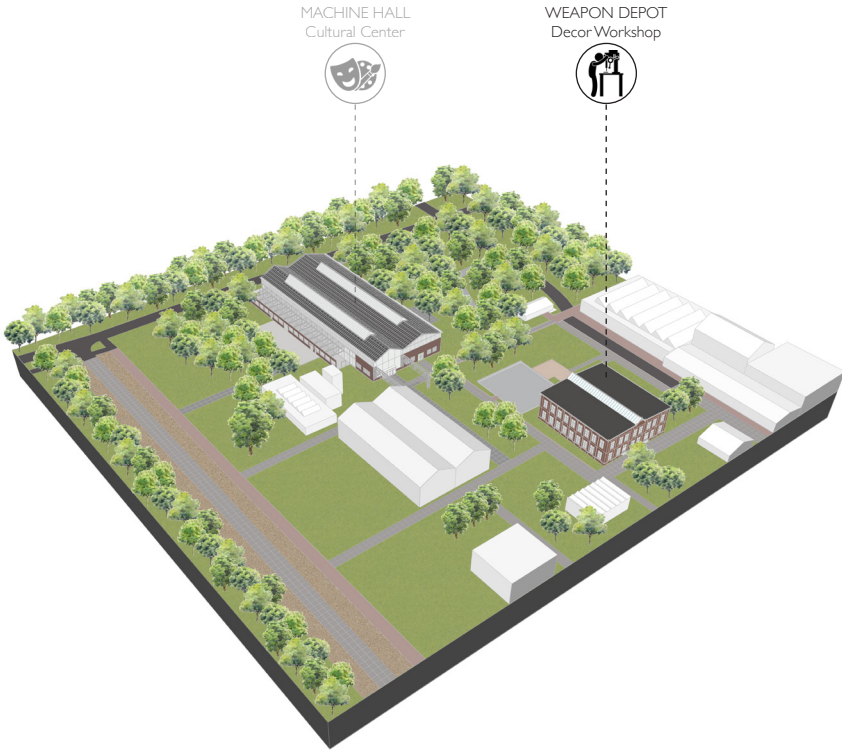






- 1 - Context
- 2 - Cultural Value
- 3 - Design**
- 4 - Reflection

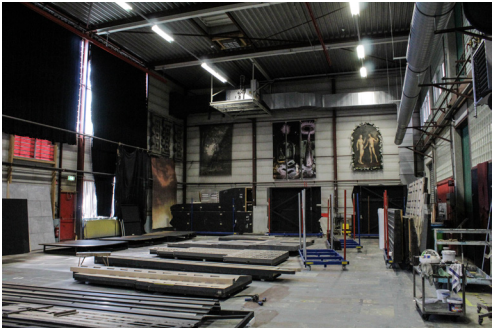




	National Ballet	Fiction Factory	Performance Factory	AHK
Timber department	×	×	×	×
Steel department	×	×	×	×
Paint department	×	×	×	×
Supply storage	×	×	×	×
Built up space	×	×	×	×
Indoor or sheltered transport space	×	×	×	×
Costume department		×	×	
Sculpt department	×			
Decor storage space	×			
Rehearsal rooms			×	×

Program of Requirements

- Timber department
- Steel department
- Paint department
- Supply storage
- Built up space
- Indoor or sheltered transport space
- Costume department
- Sculpt department



National Ballet, Amsterdam
Paint department



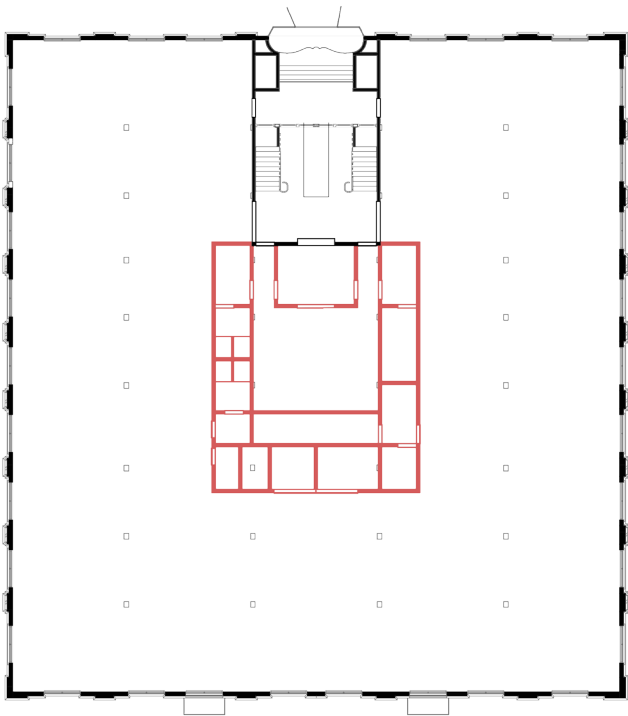
Fiction Factory, Amsterdam
Costume department



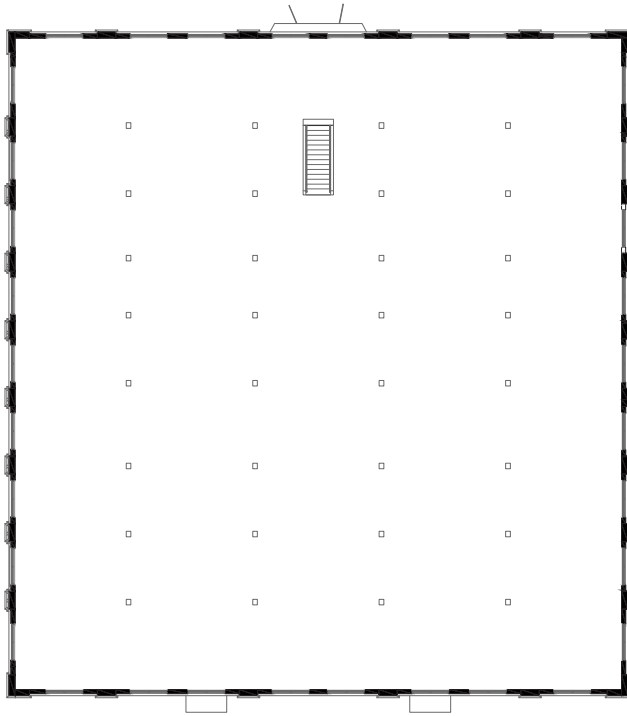
Performance Factory, Enschede
Steel department



AHK, Amsterdam
Timber department

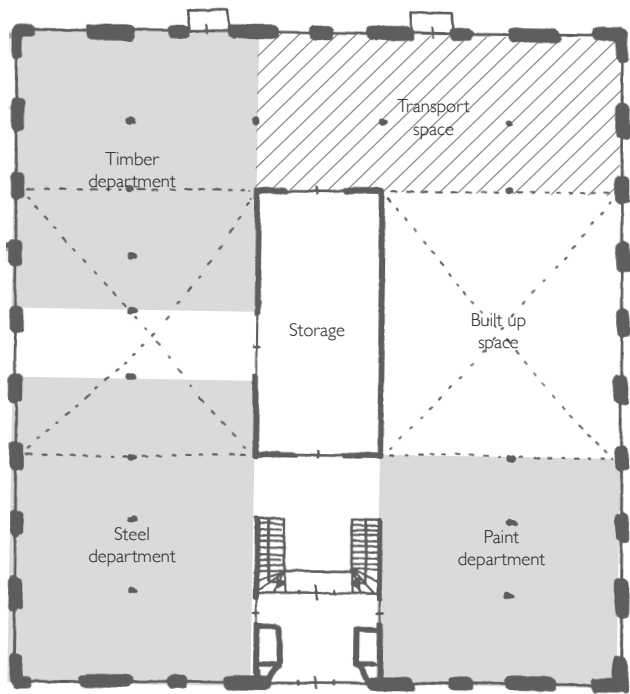


Ground floor

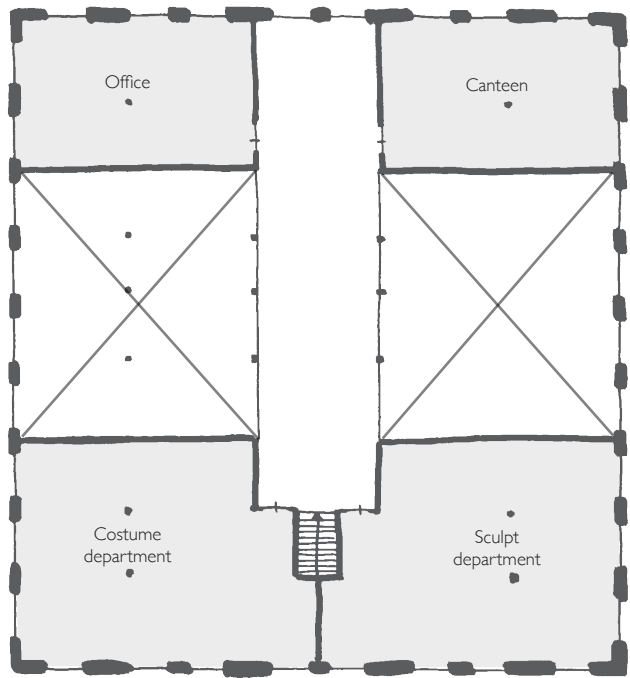


First floor



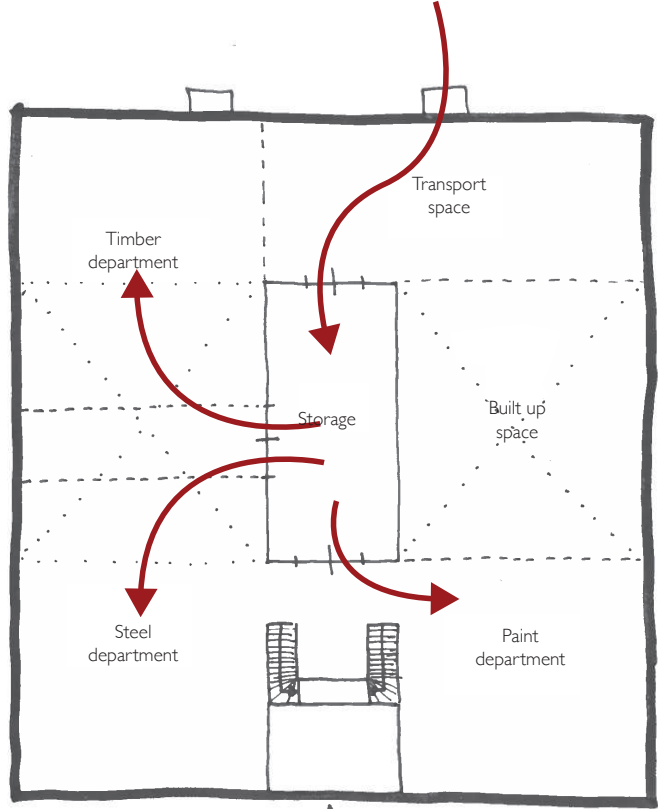


Ground floor

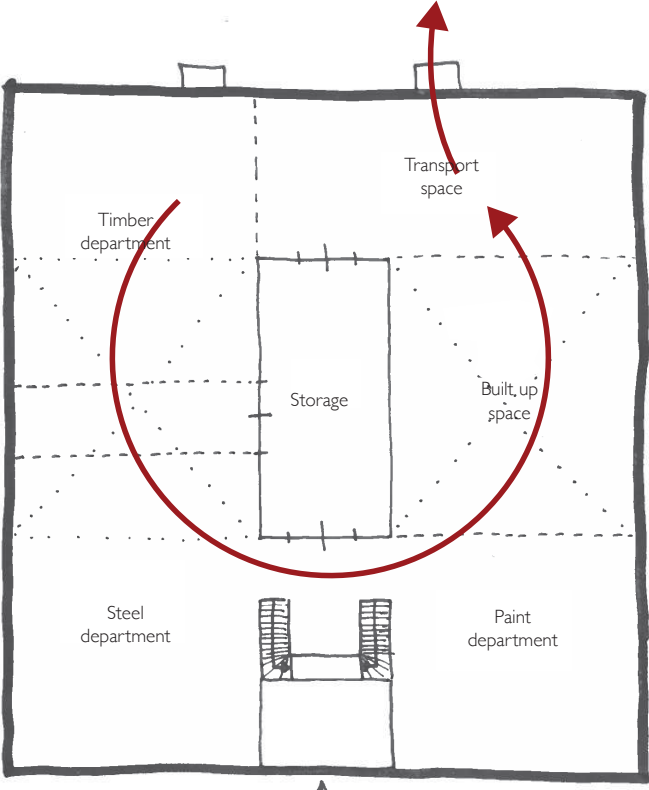


First floor



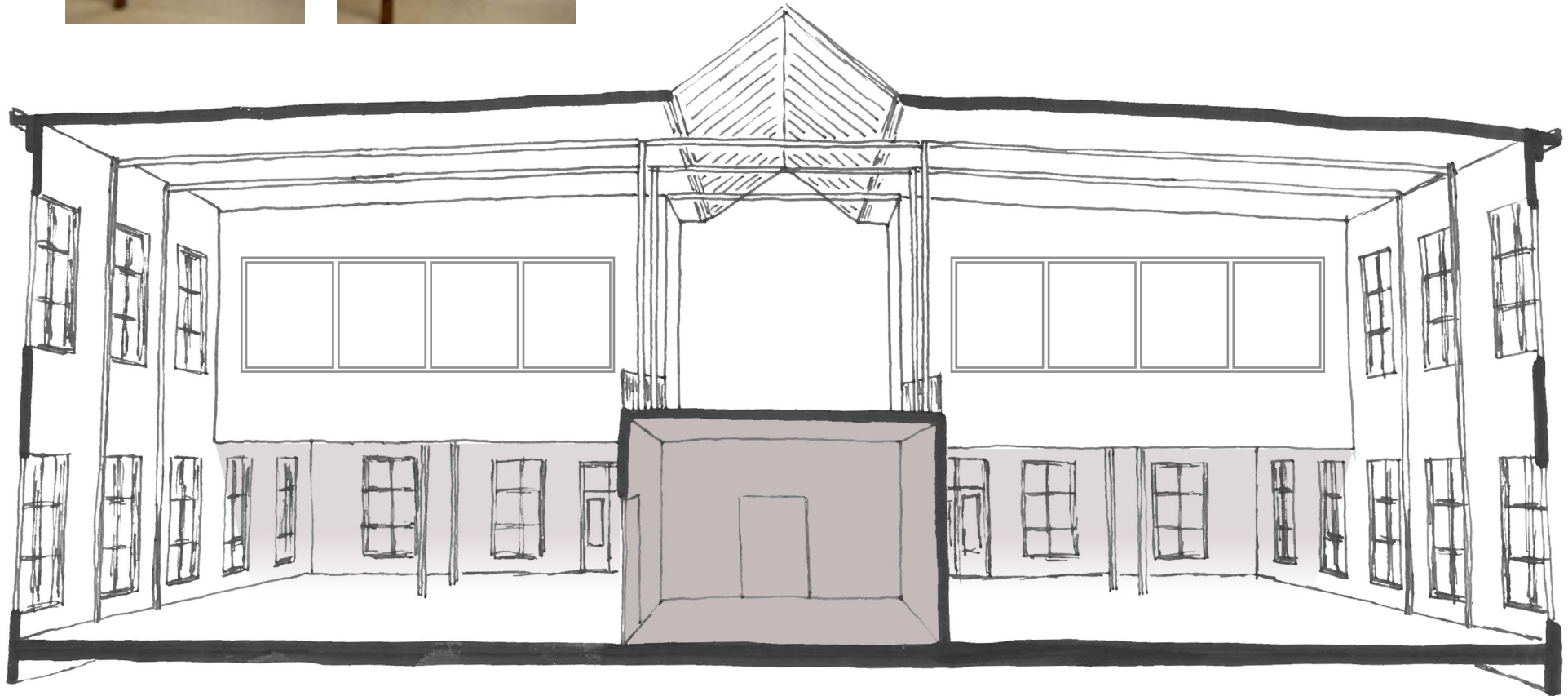


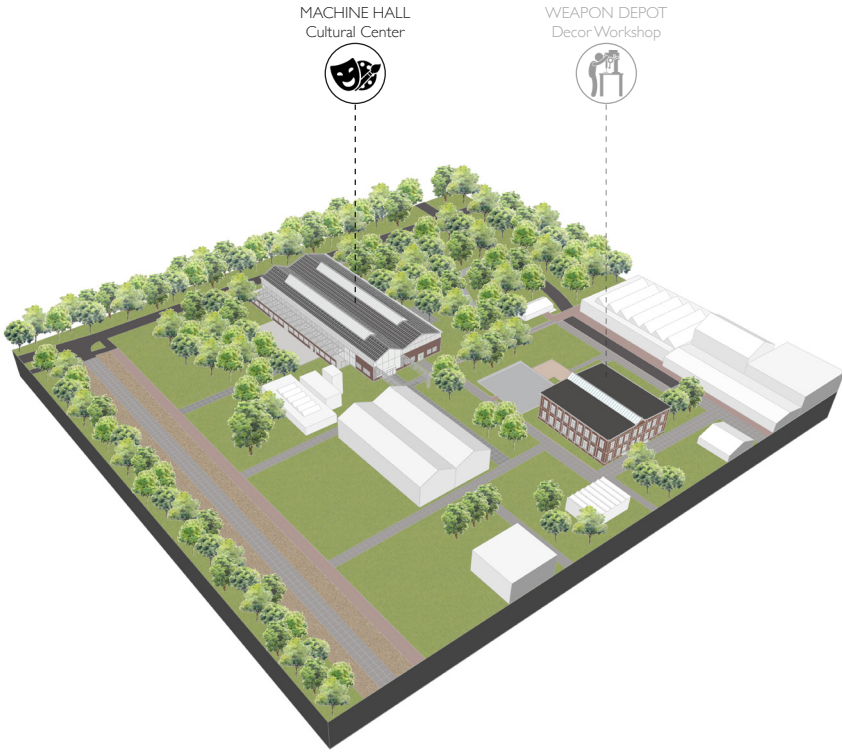
Ground floor



Ground floor

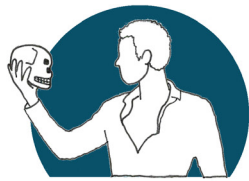






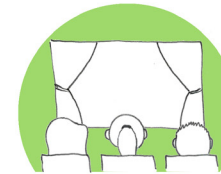
PROCESS-BASED WORK

activities that people participate in

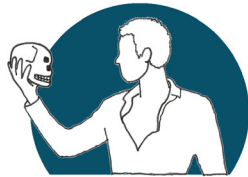


PUBLIC PRESENTATIONS

events that people attend as an audience



DANCE (& THEATER)



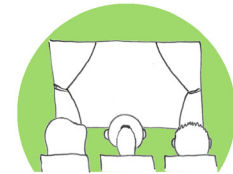
MUSIC



ART



PERFORMING



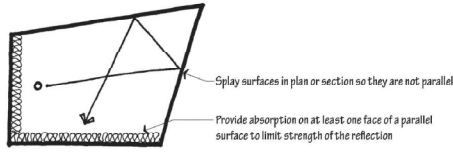


DANCE





MUSIC





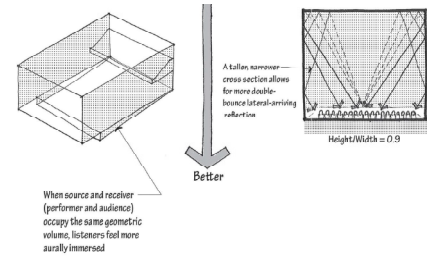
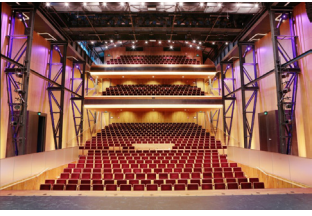
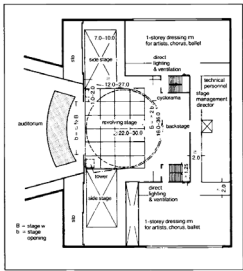
ART



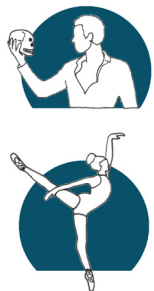


Shoebox
Studio Multiform
Thrust
Multipurpose
Vineyard
theater
OperaHouse
Endstage
Concerthall
Arena
RecitalHall
Proskenium
Environmental
BlackBox
Courttyard
Promenade

PERFORMING



DANCE / THEATER



Program of Requirements

- practice rooms:
large - medium - small
- warm-up space
- waiting area
- dressing rooms
- toilets

MUSIC



Program of Requirements

- practice rooms:
individual - group
- performing area
- waiting area
- toilets

ART



Program of Requirements

- individual ateliers
- classrooms
- cleaning sinks
- storage space
- toilets

PERFORMING



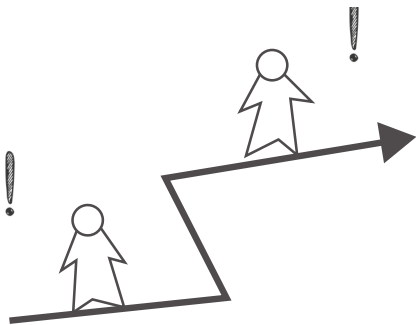
Program of Requirements

- theaters
ca. 100 persons
- backstage
- dressing rooms
- seating area

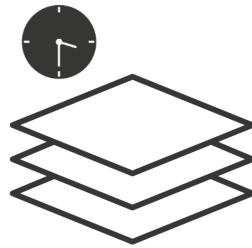
additional facilities

- foyer
- bar / café
- wardrobe
- toilets

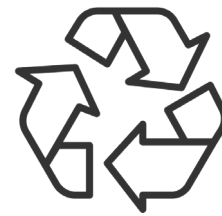
EXPERIENCE



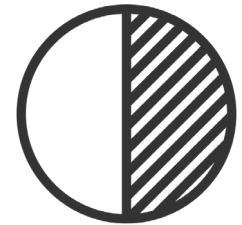
TIME LAYERS

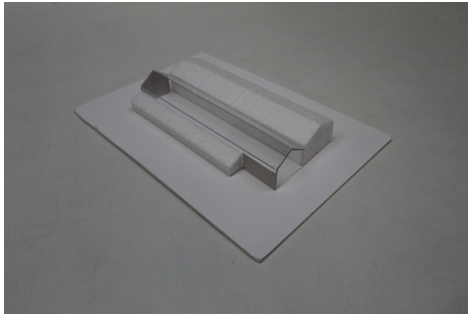
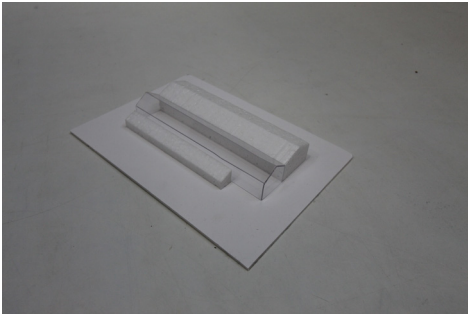
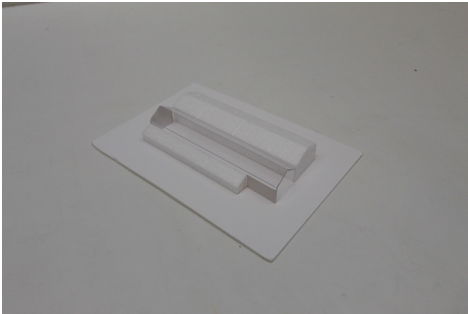
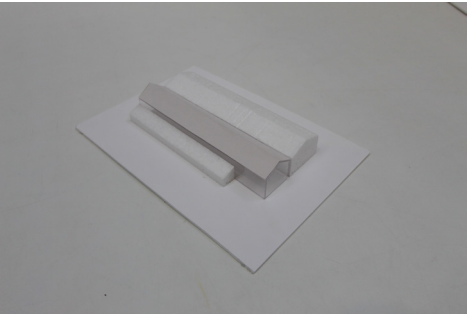
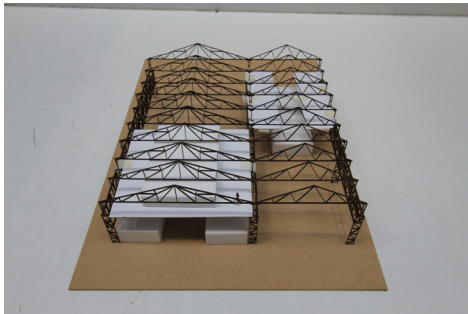
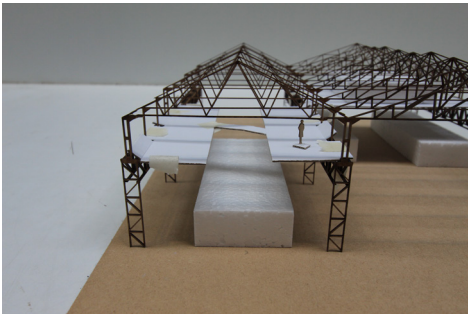
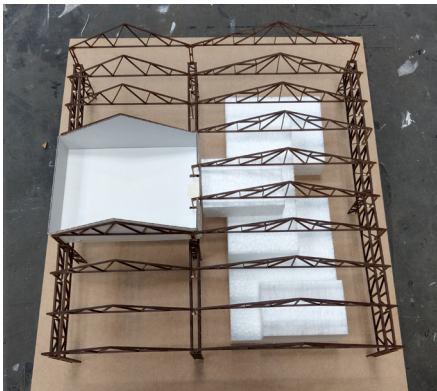


REUSE

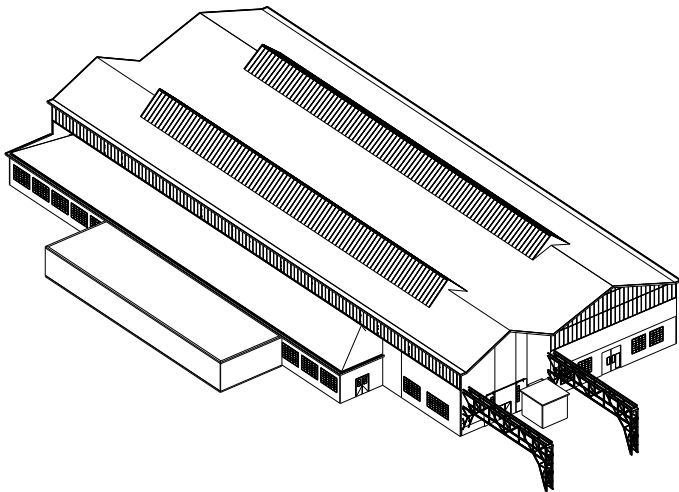


CONTRAST

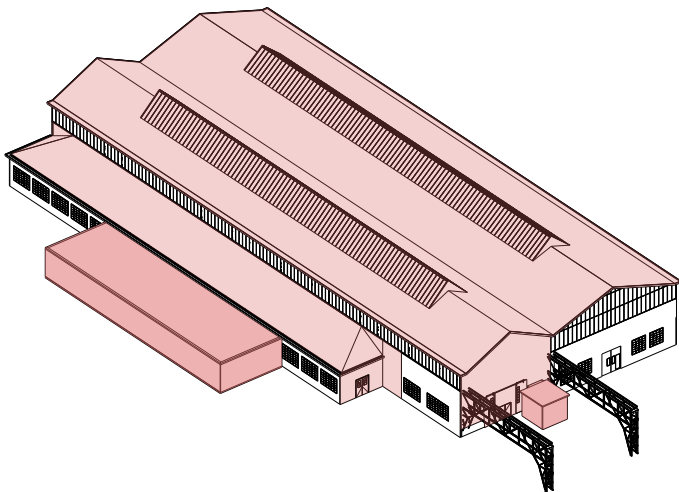




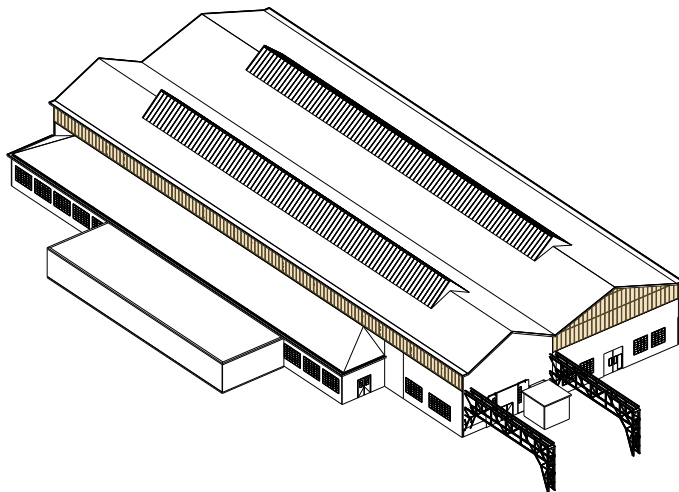
EXISTING



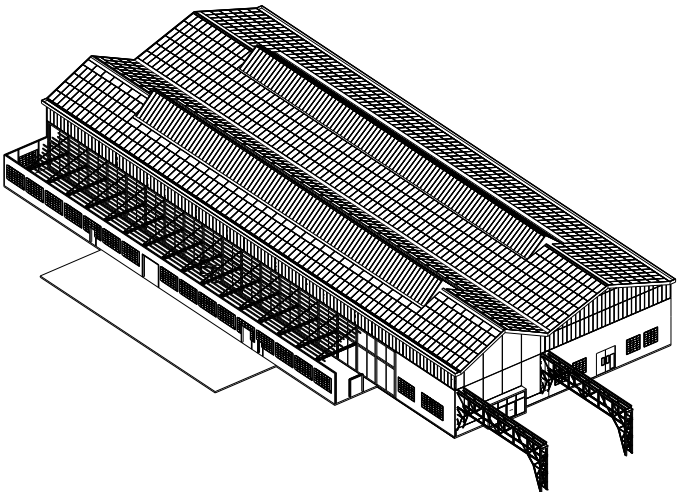
DEMOLITION



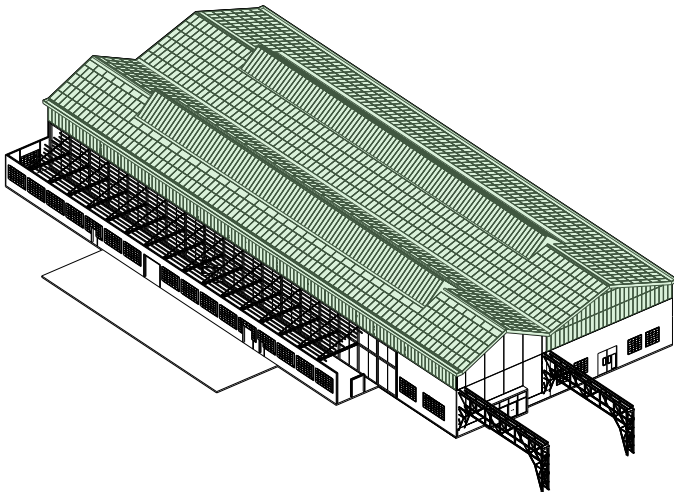
REUSE



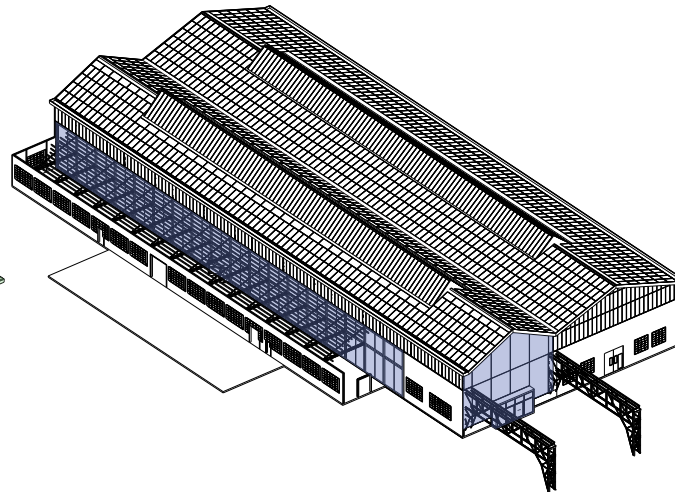
NEW



RENOVATED



INTERVENTION



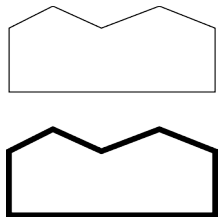
GOAL:

To create a sustainable design that is futureproof

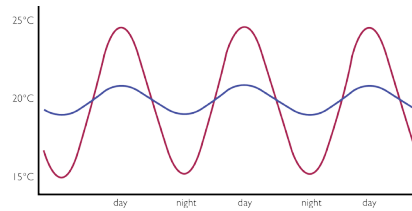
HOW?

Reduce, Reuse, Recycle

1. Reducing the energy demand



Isolate the skin



Stabilisation of the inside temperature

2. Reuse the rest energy

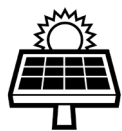


Heat exchanger



Filter rainwater
to flush toilets

3. Solve the remaining energy demand sustainably

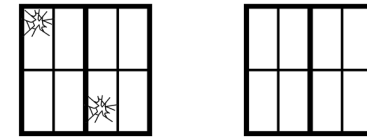


Solar energy



Earth energy

4. Reuse demolished materials



Reusing the steel windows

5. Choice of materials

Recycled materials

Sustainable materials

Easy recyclable/reusable

Eco friendly materials

minimal negative impact on
our environment

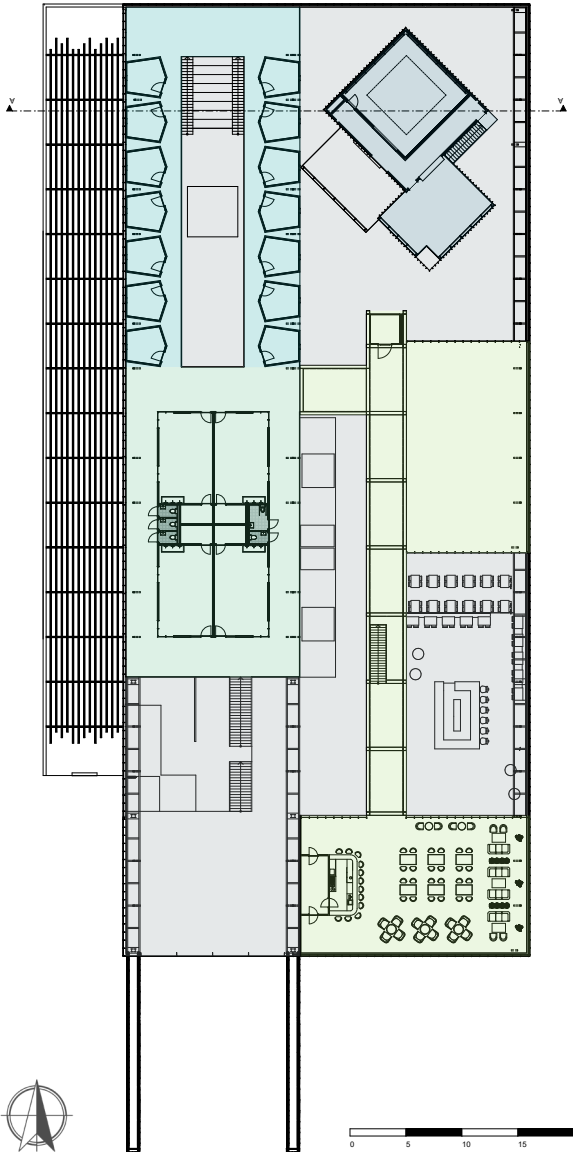
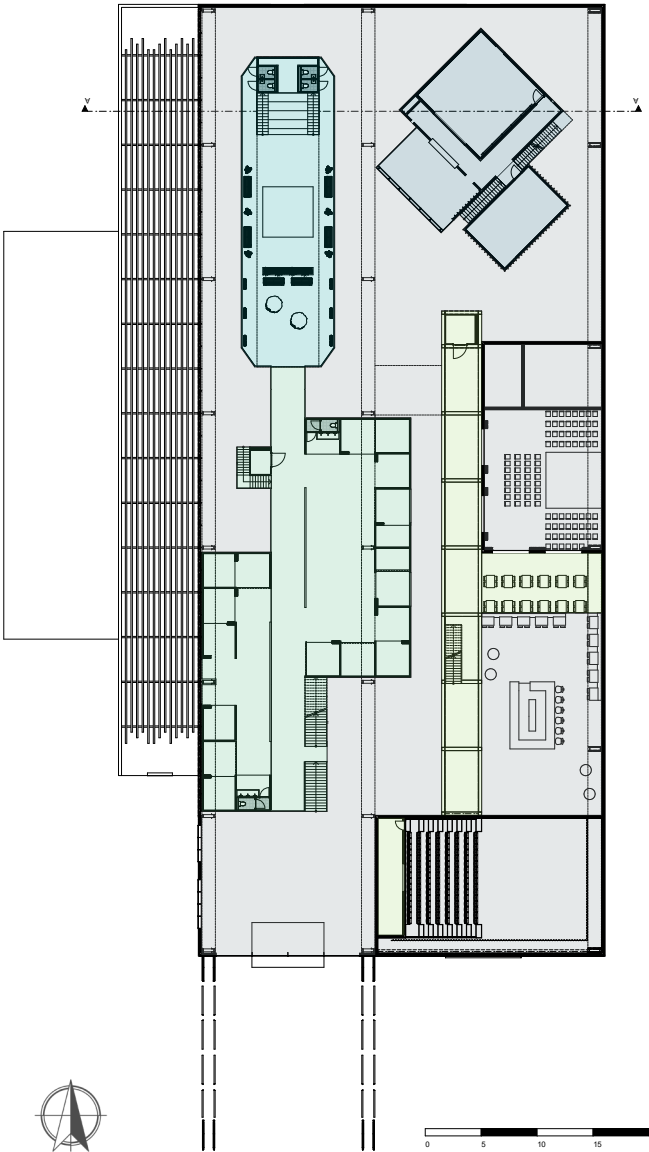
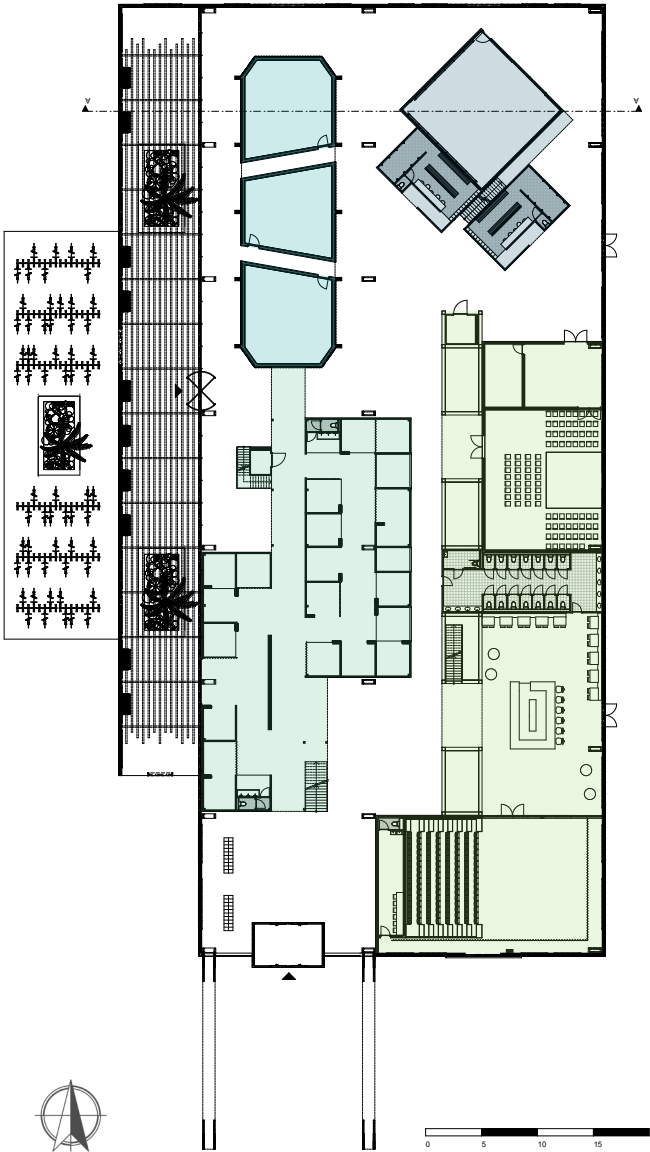


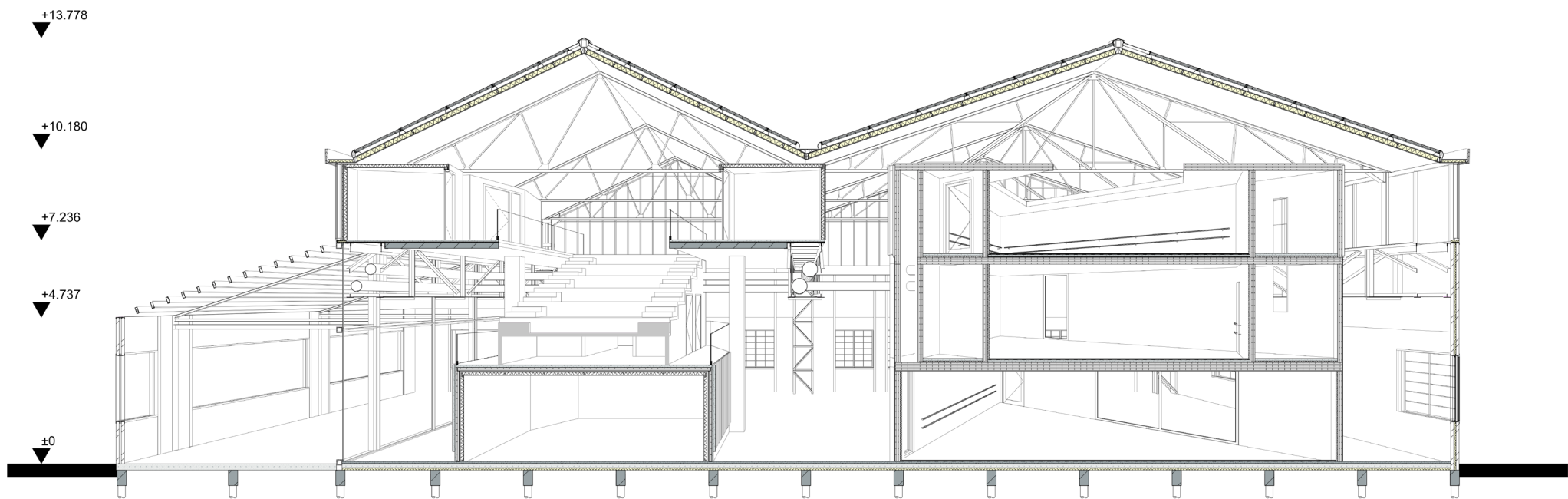


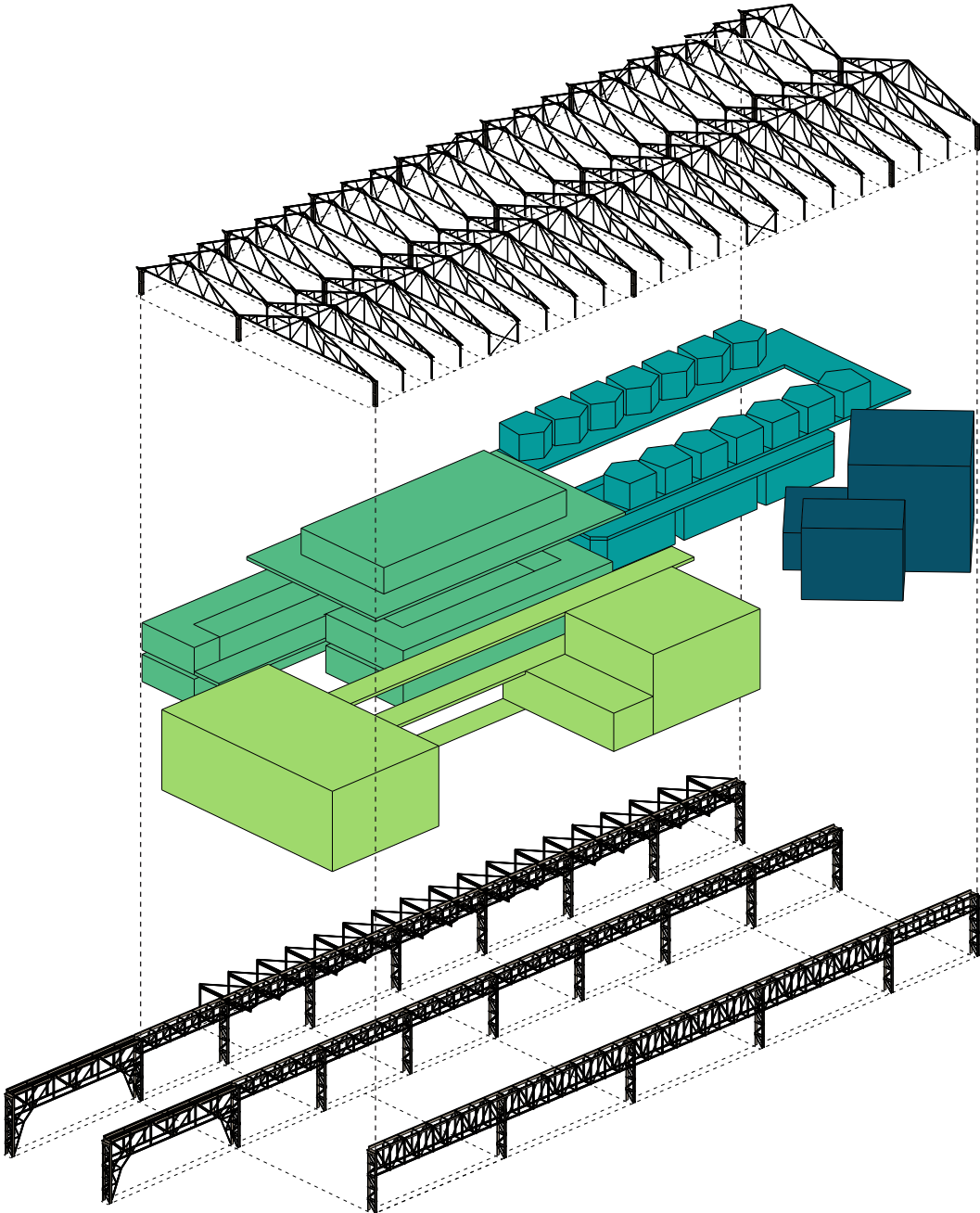
GROUND FLOOR

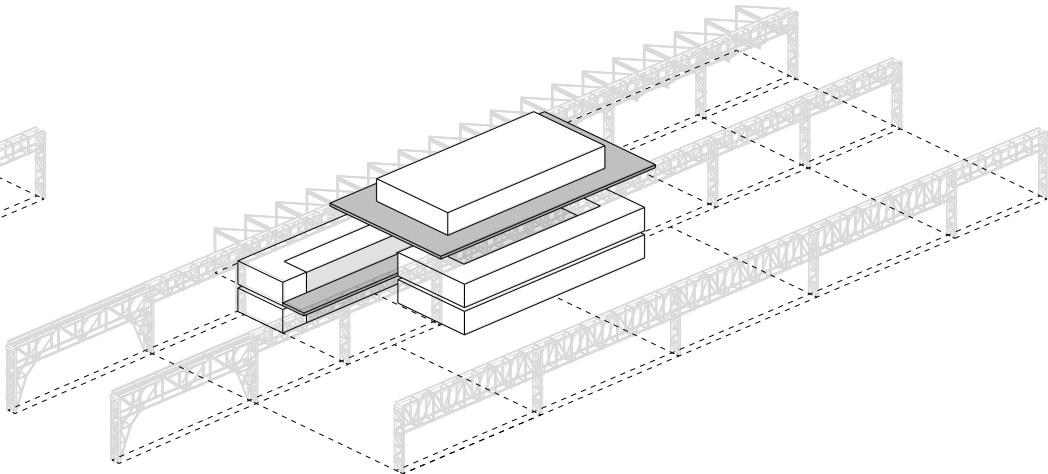
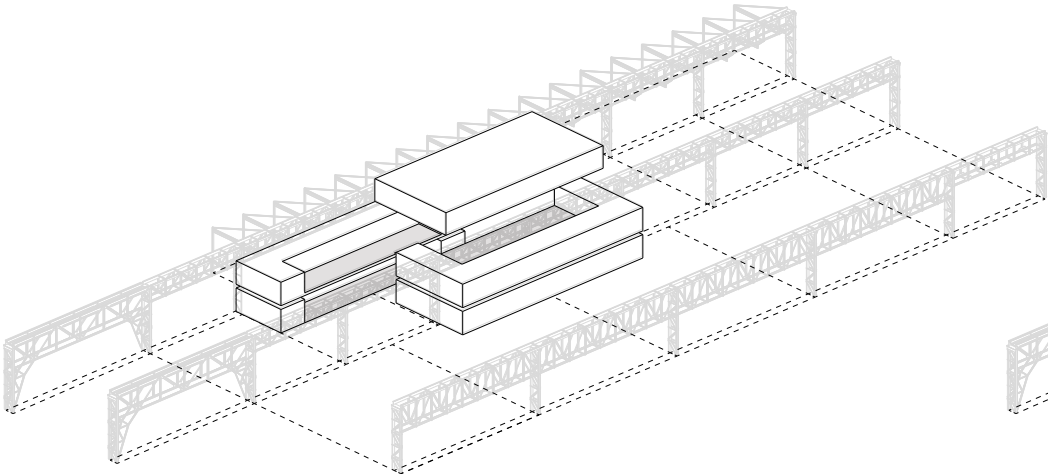
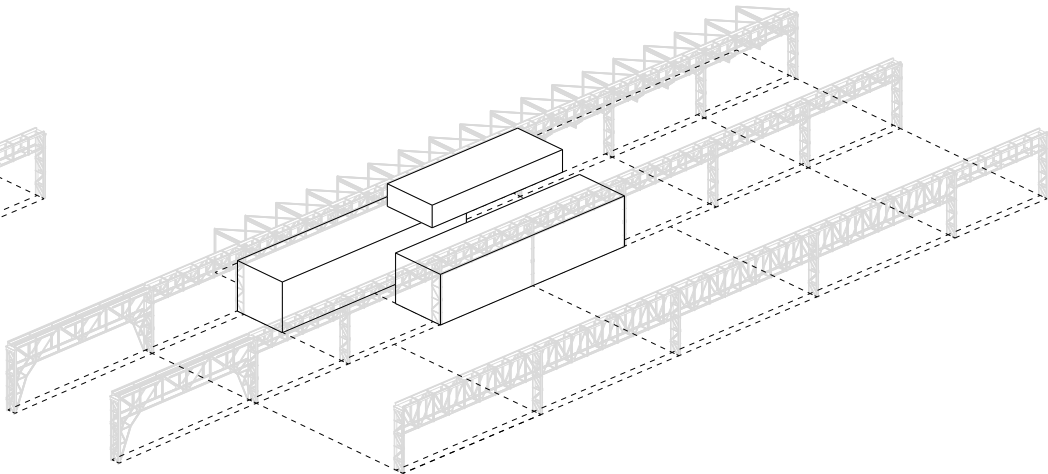
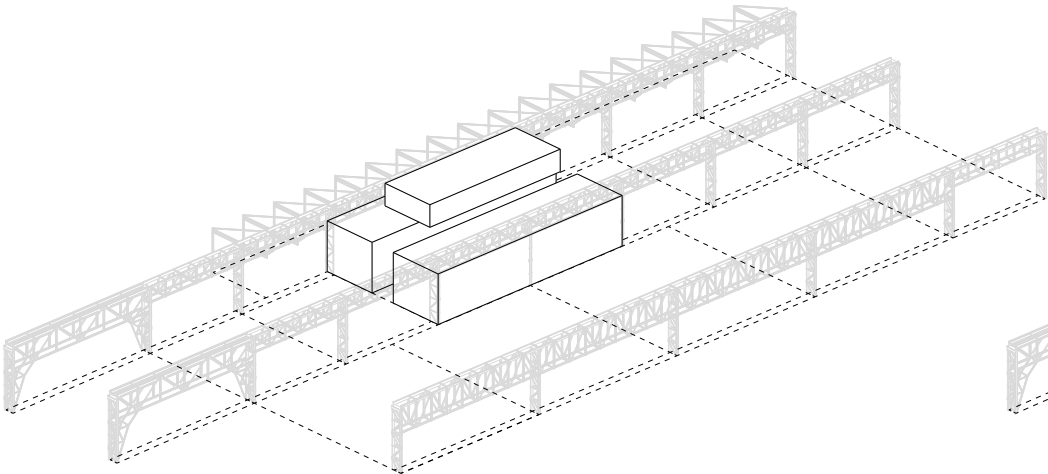
FIRST FLOOR

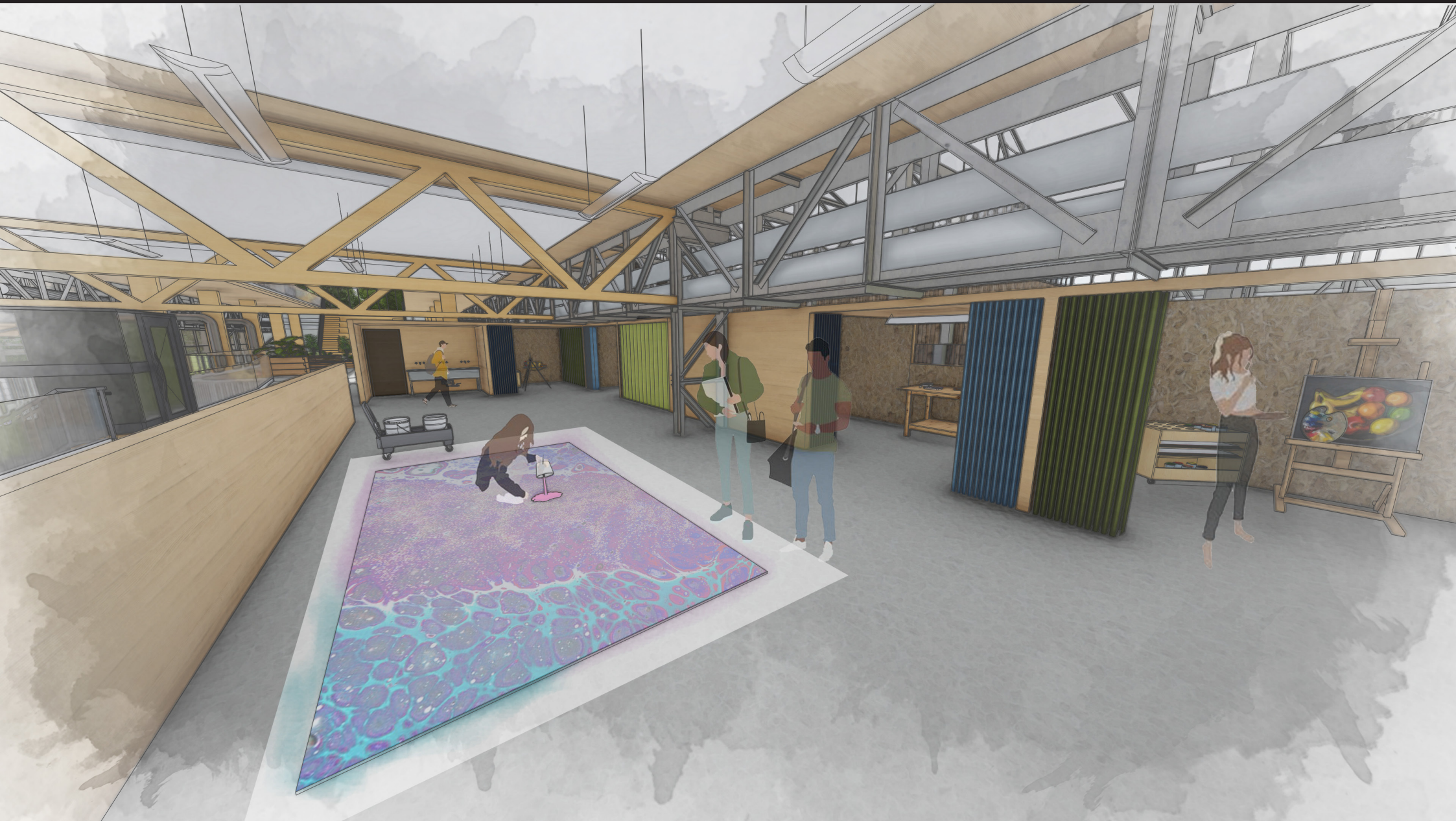
SECOND FLOOR

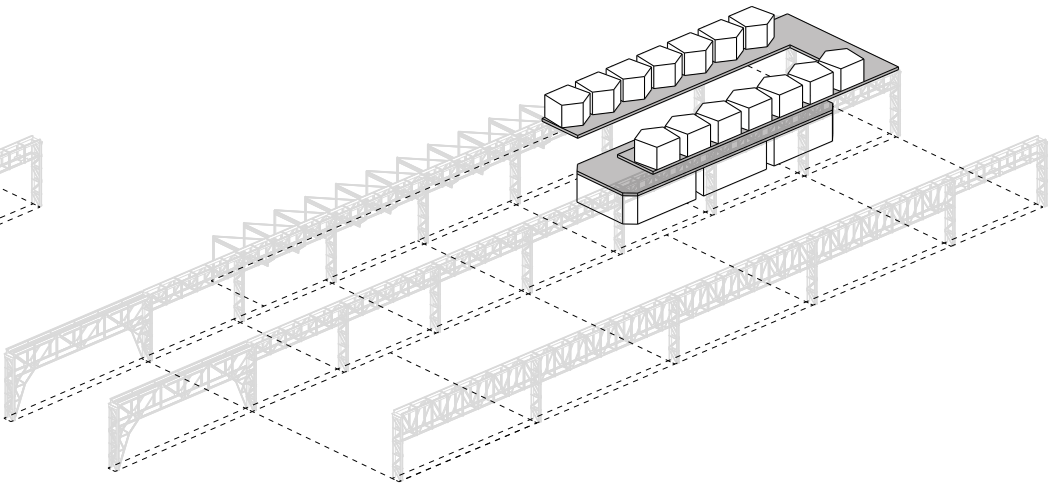
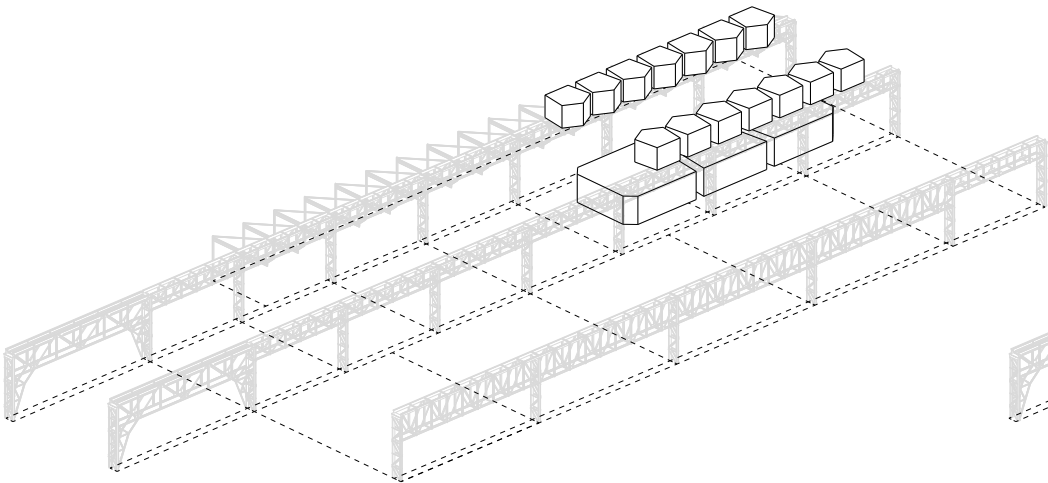
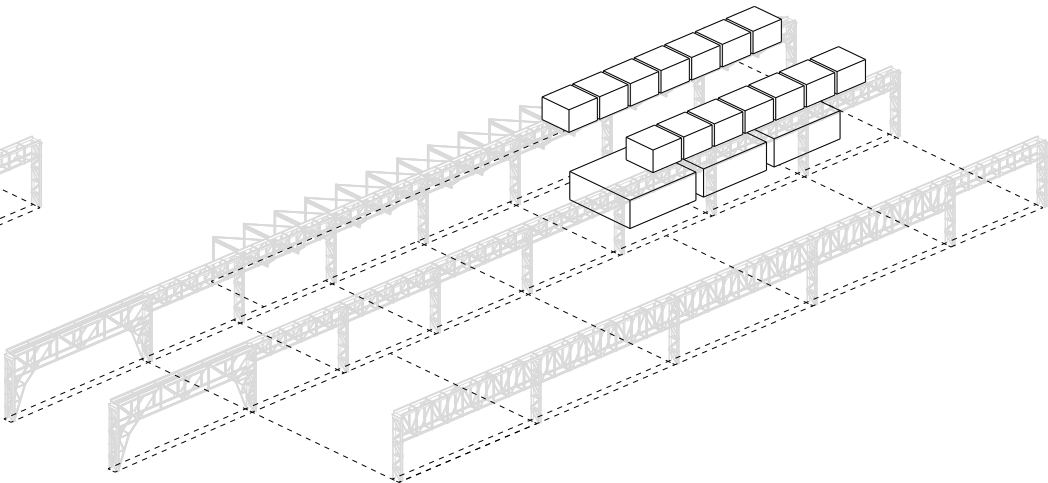
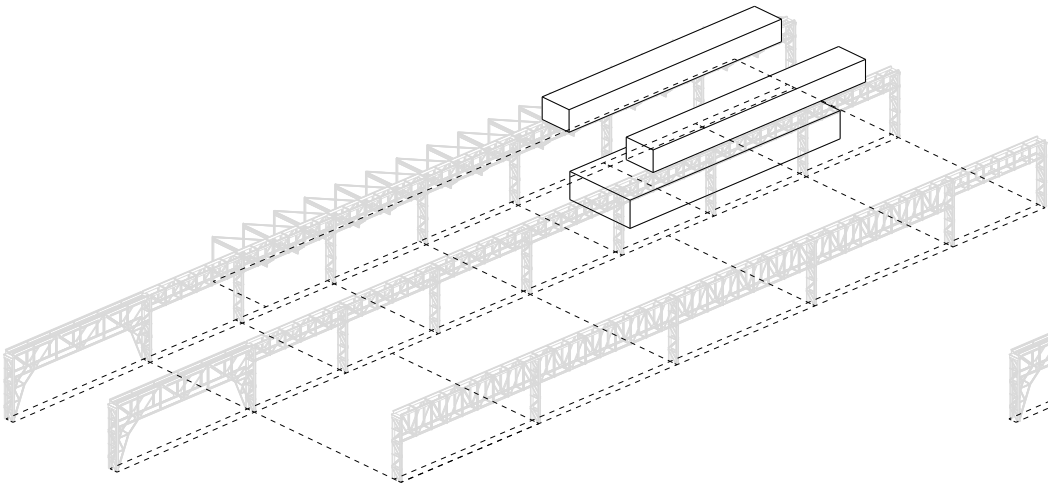




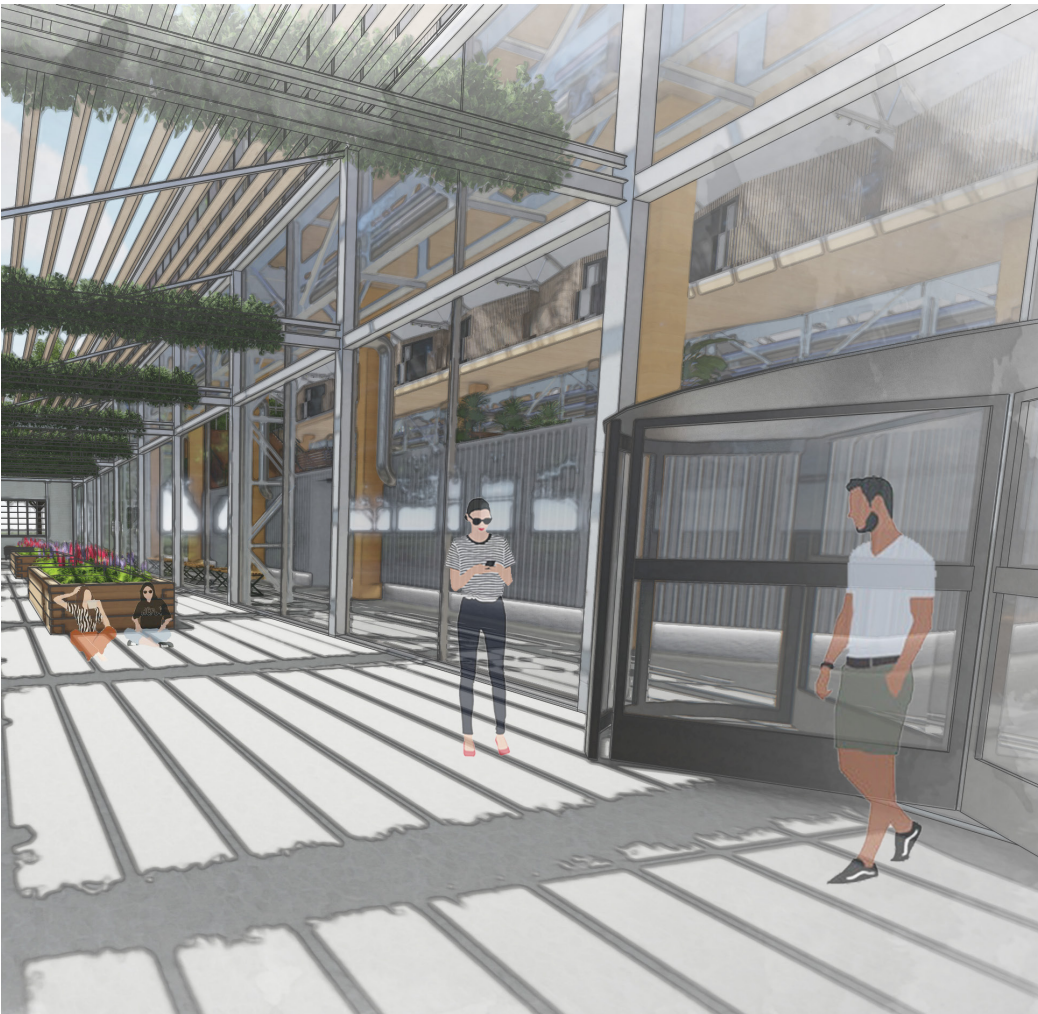
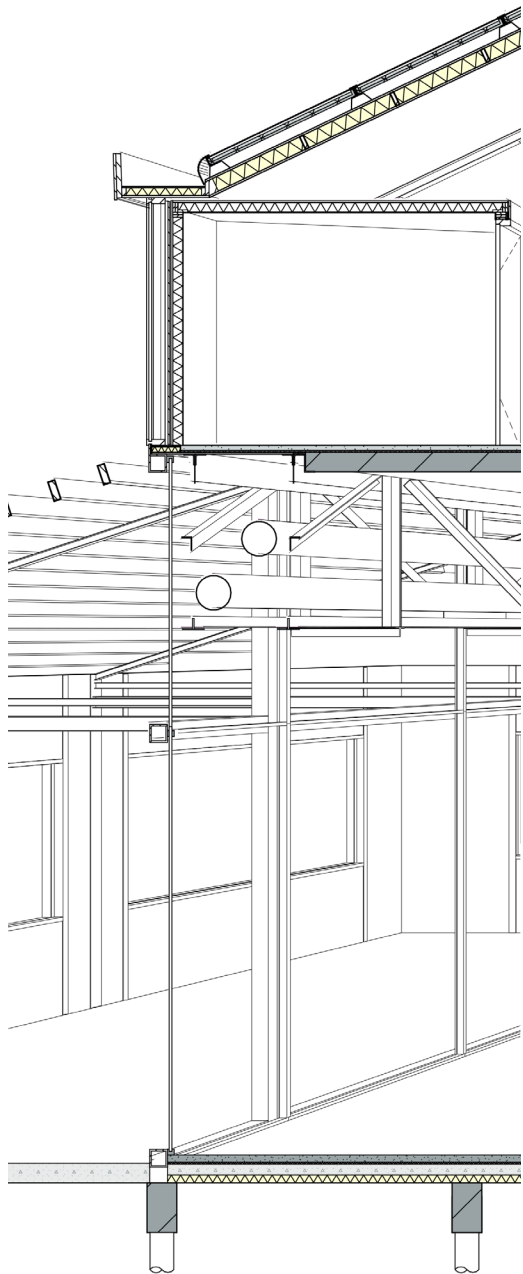


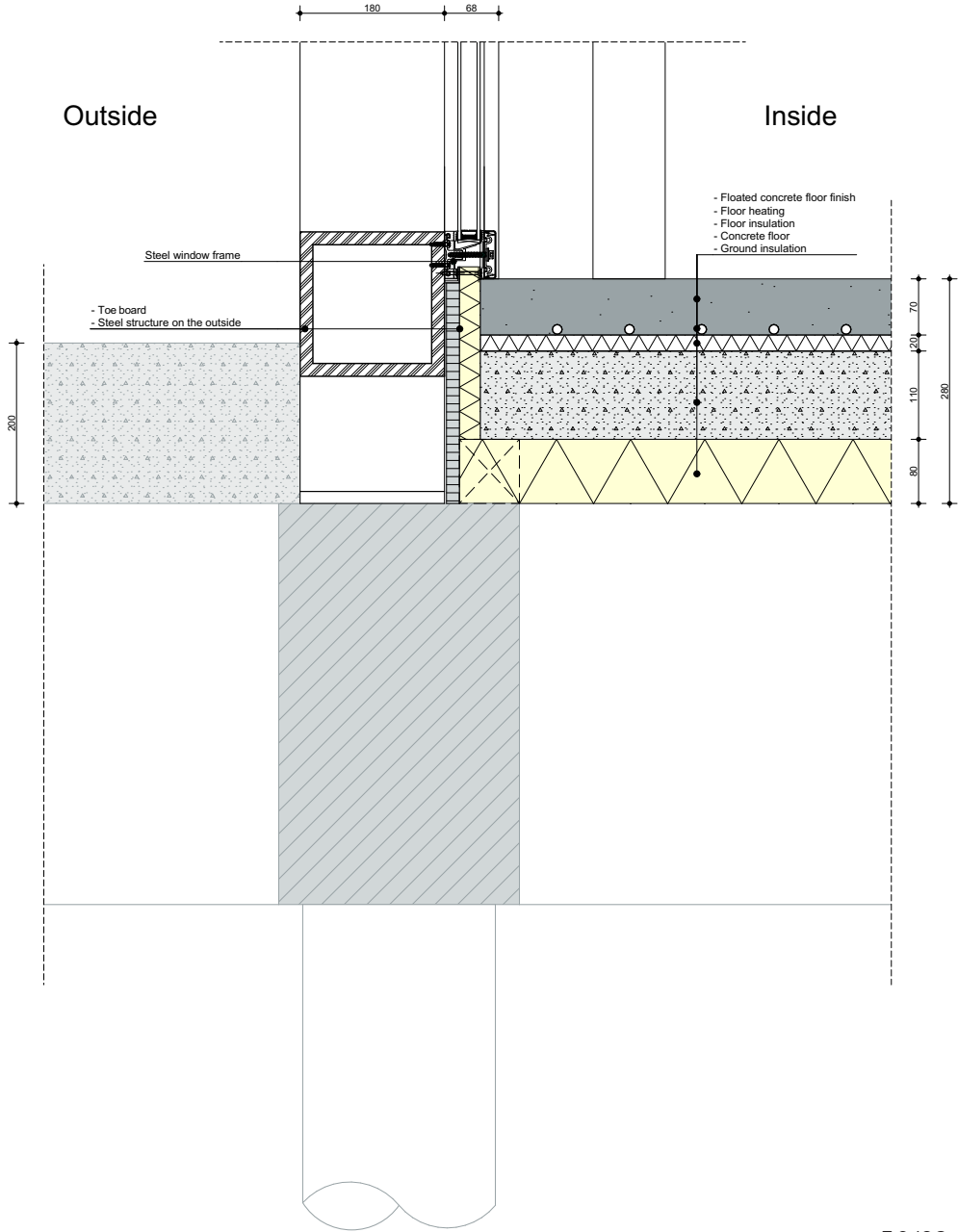
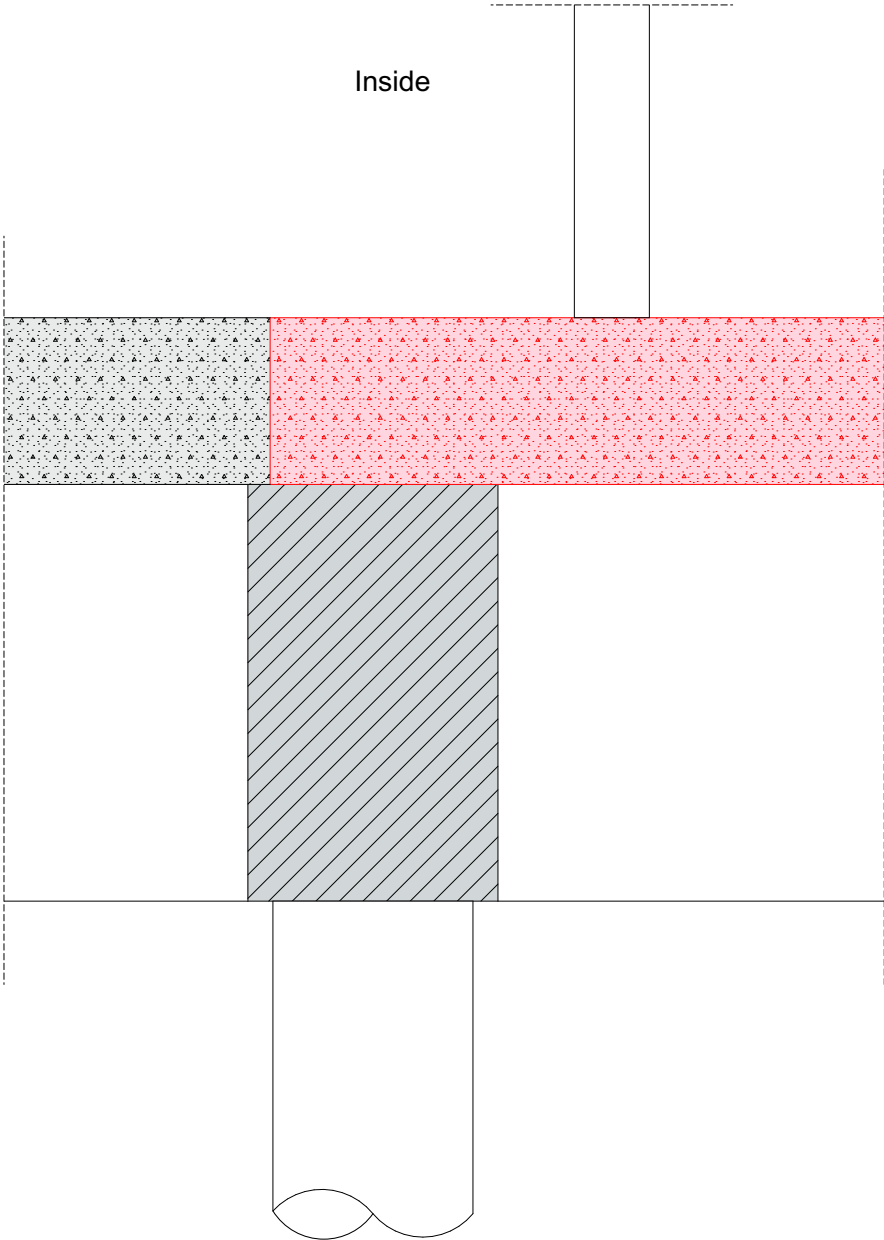


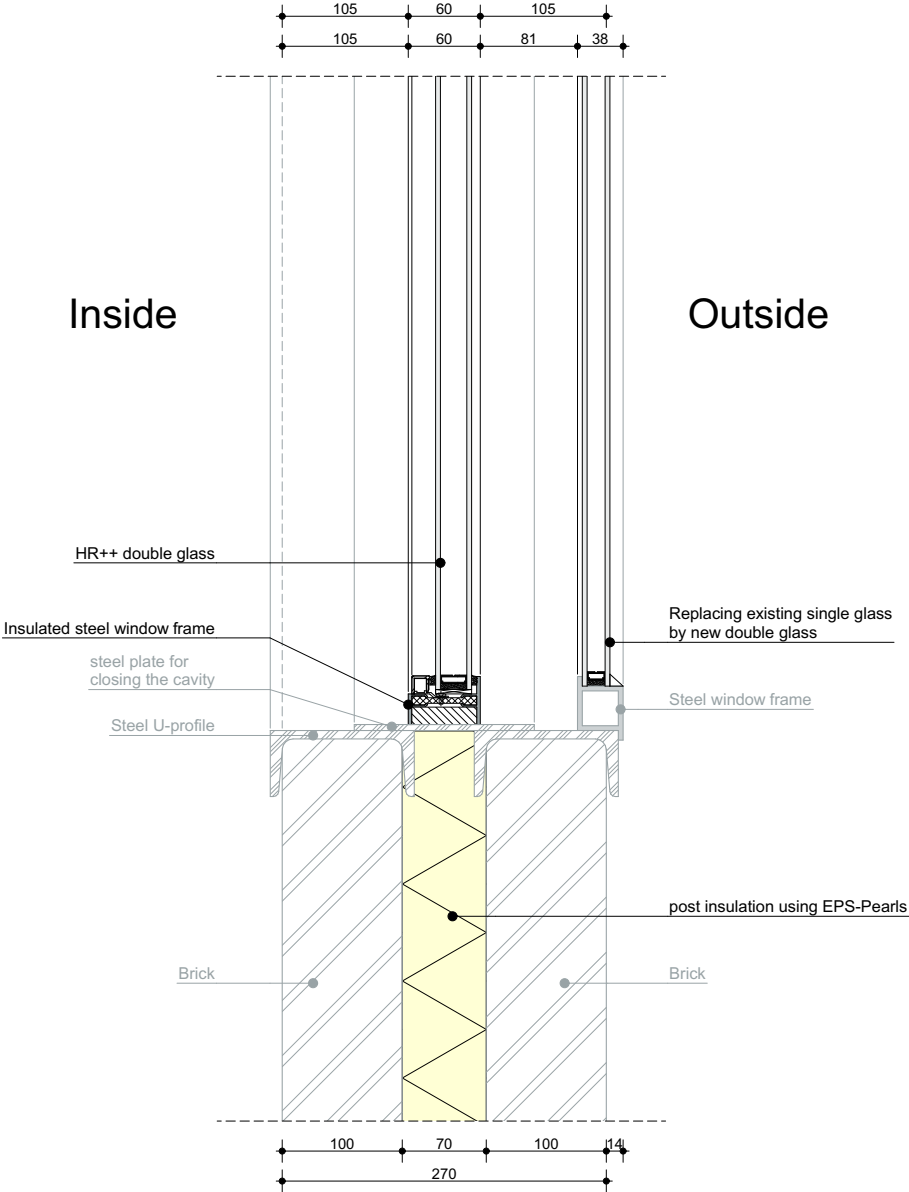
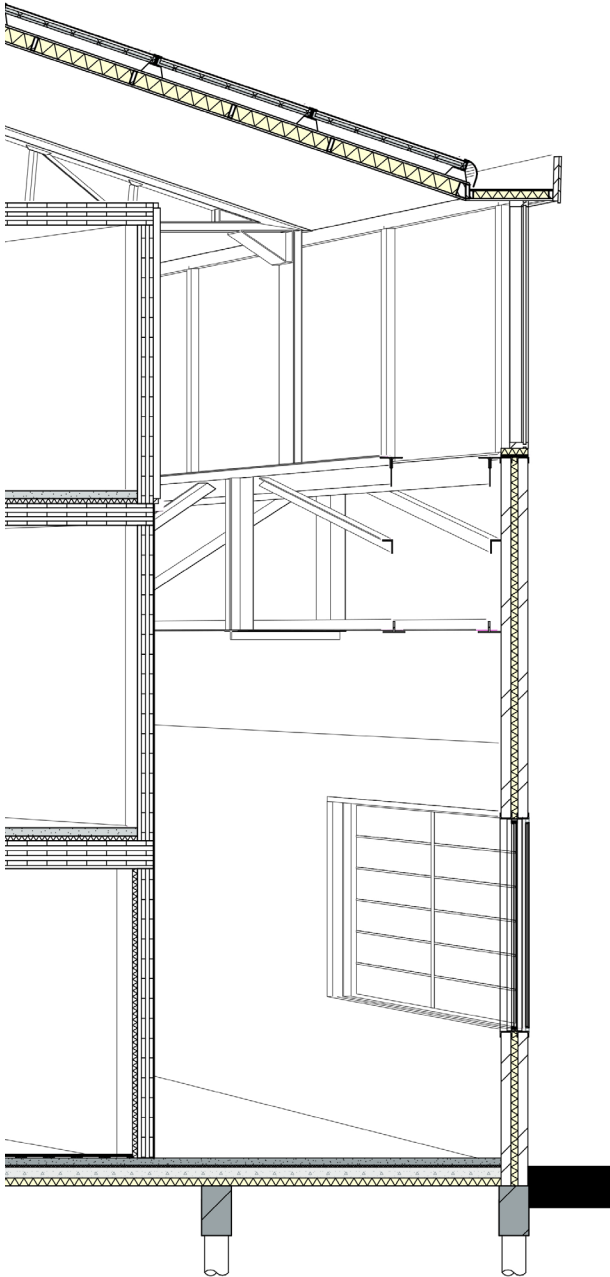


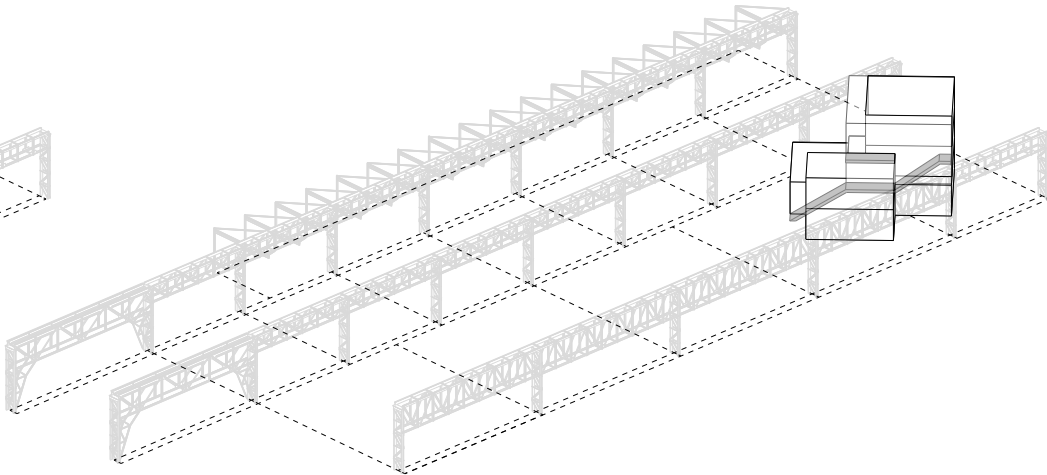
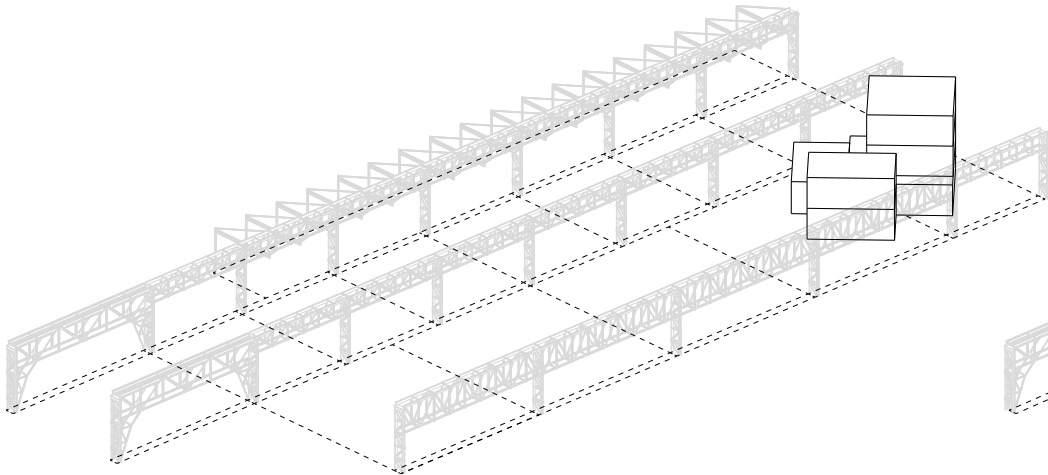
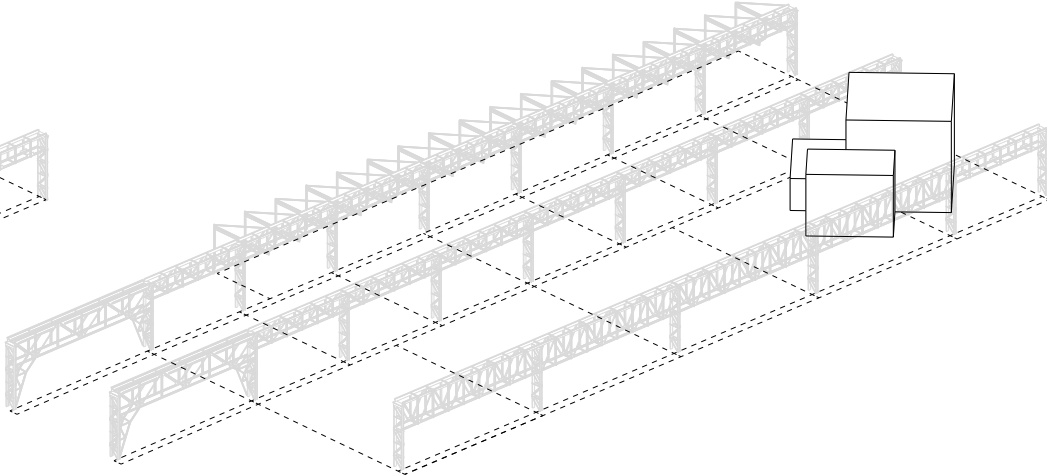
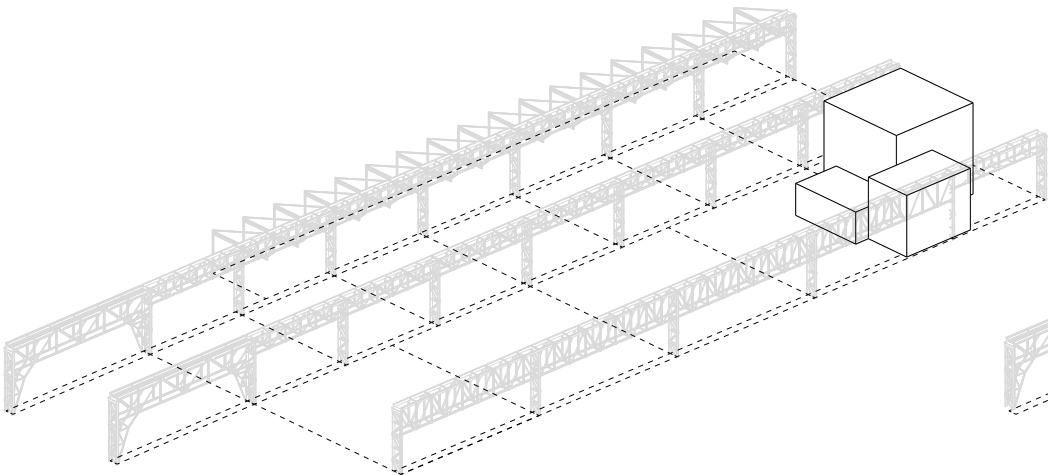




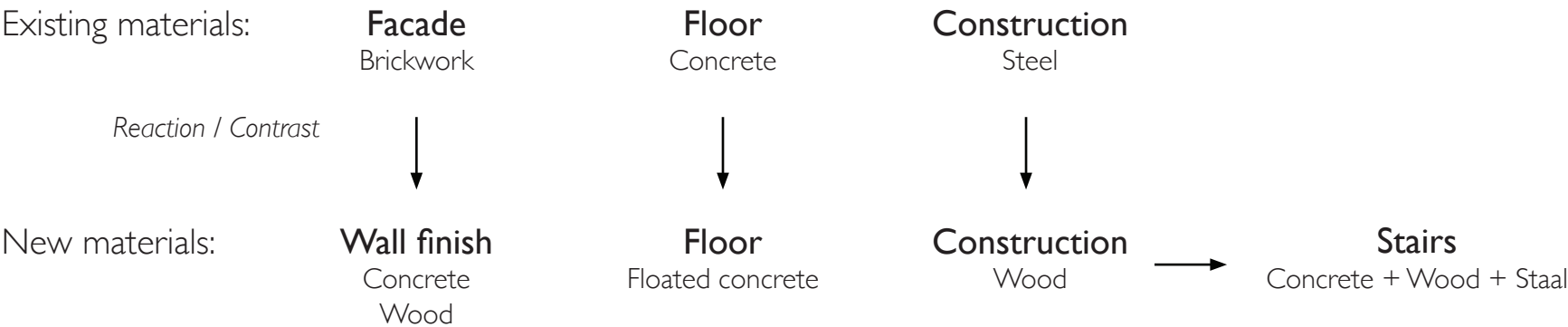


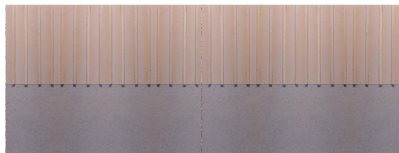
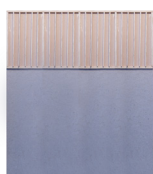
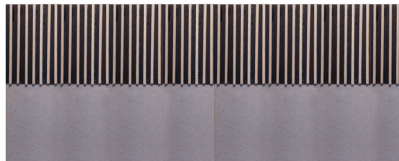
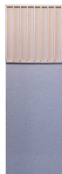
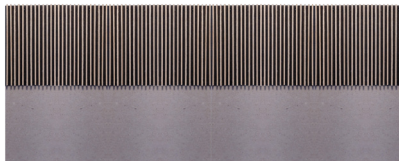
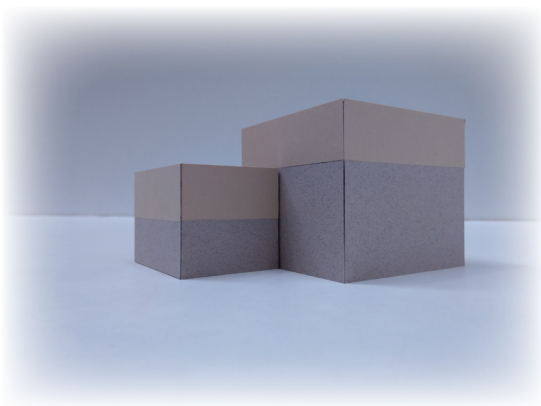
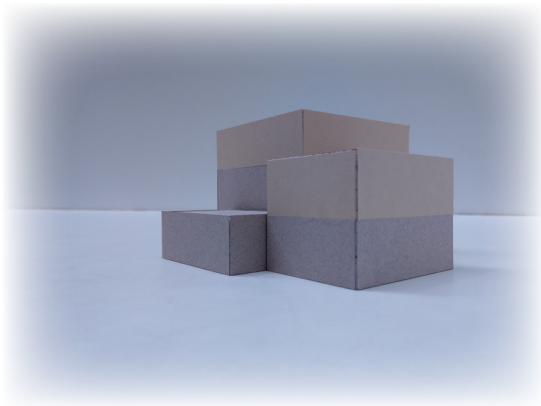












MUSIC



Bamboo planks

ARTIST



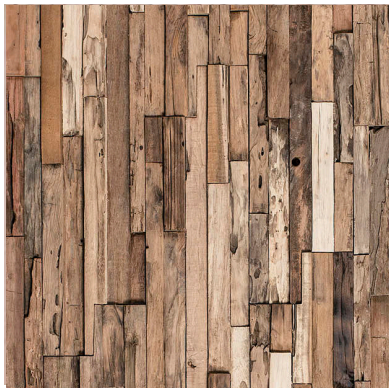
Plywood & OSB plates

DANCE

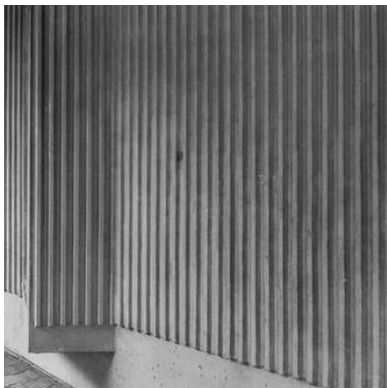


Plywood & Wooden beams

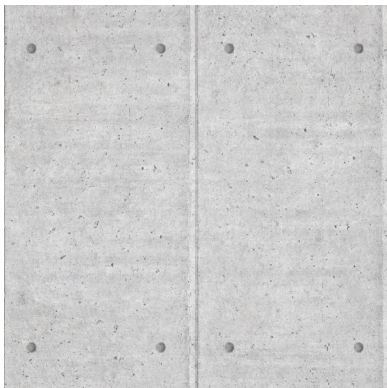
PERFORMANCE



Recycled wooden planks



Poured concrete



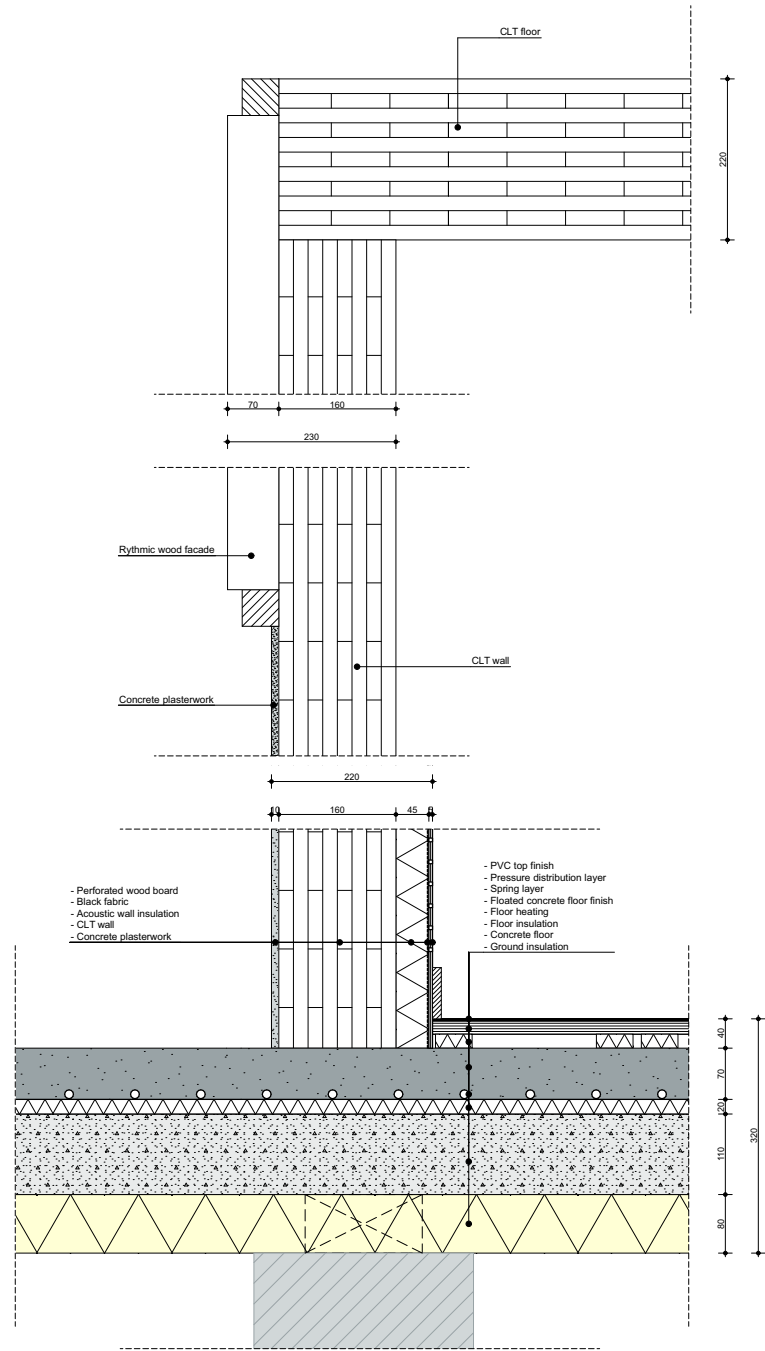
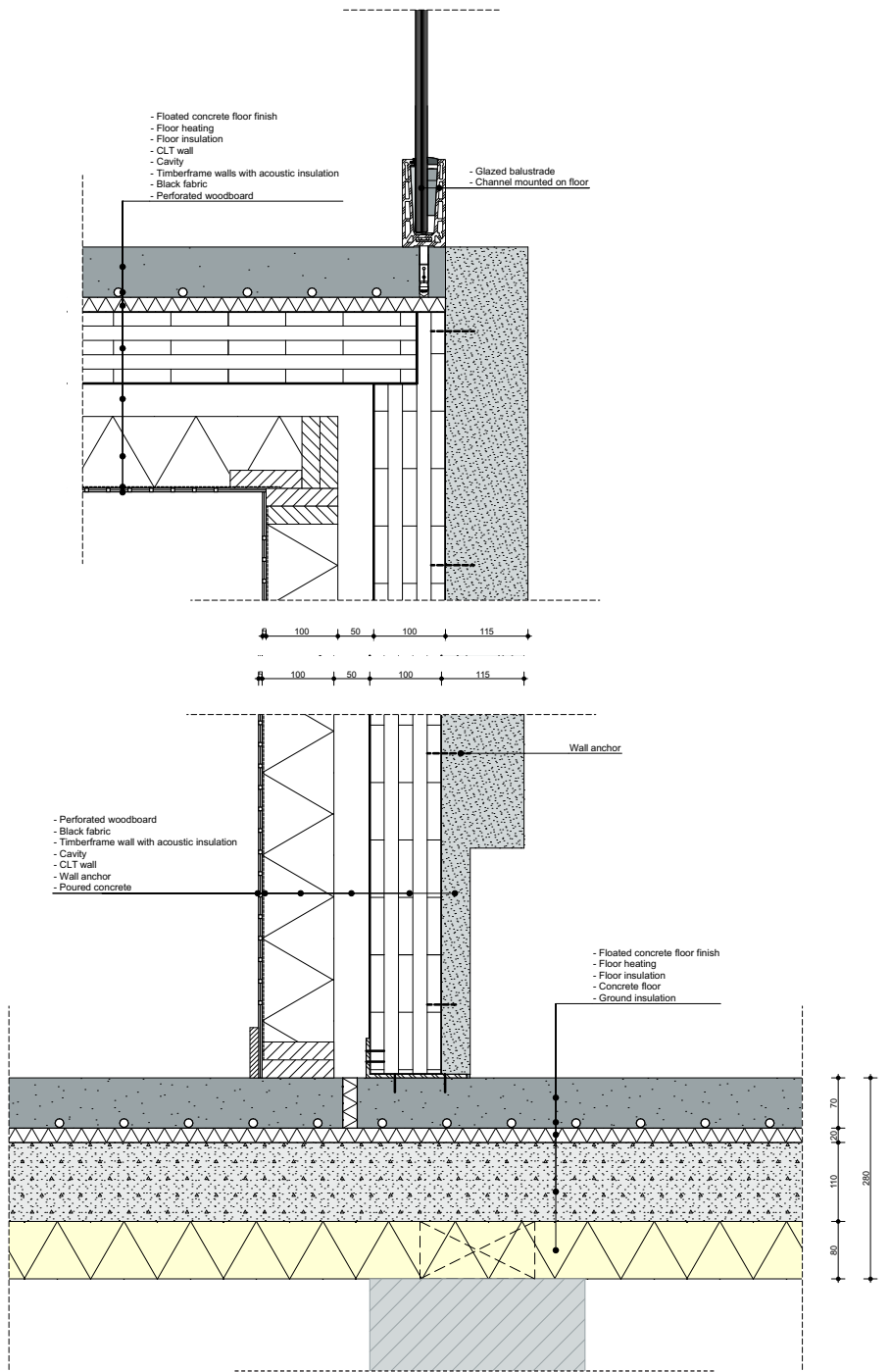
Poured concrete

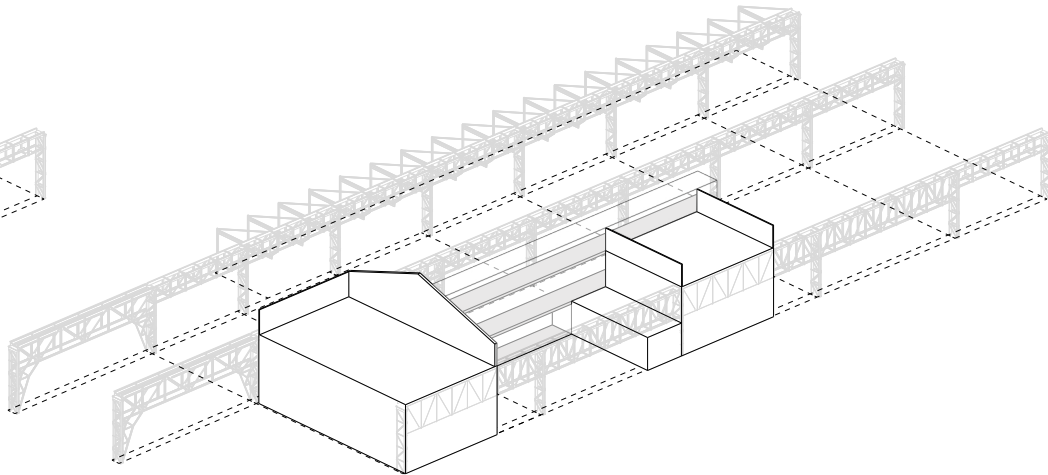
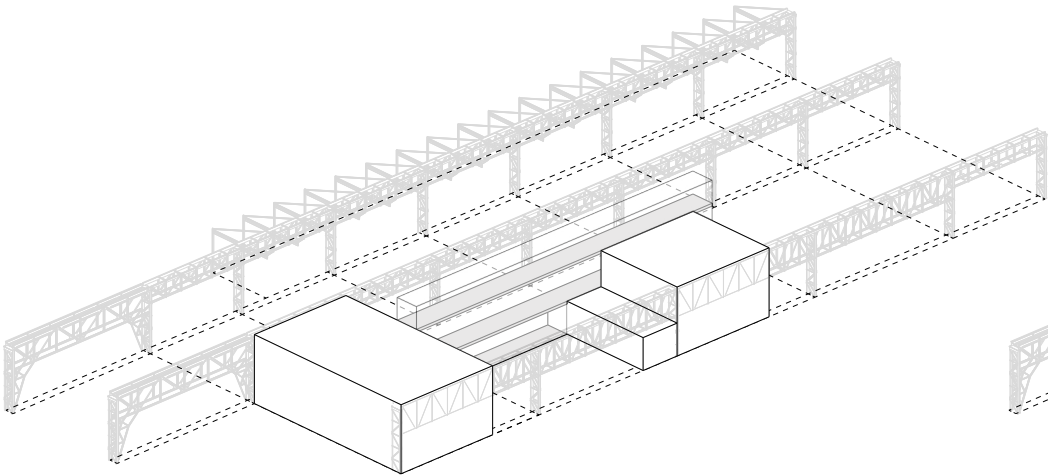
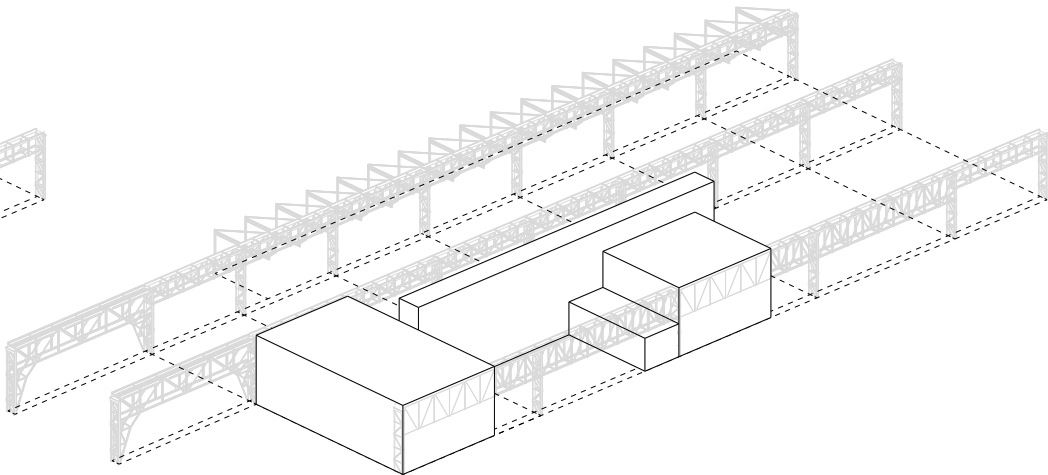
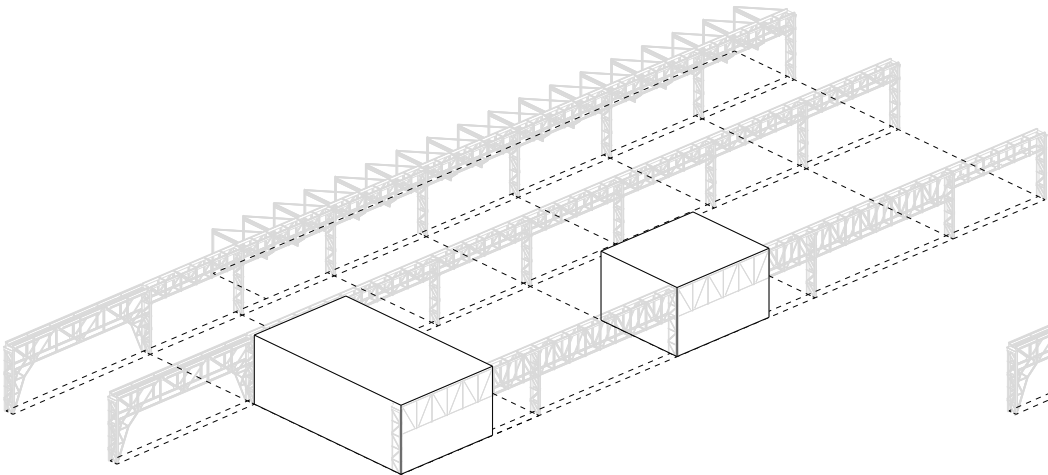


Concrete plasterwork

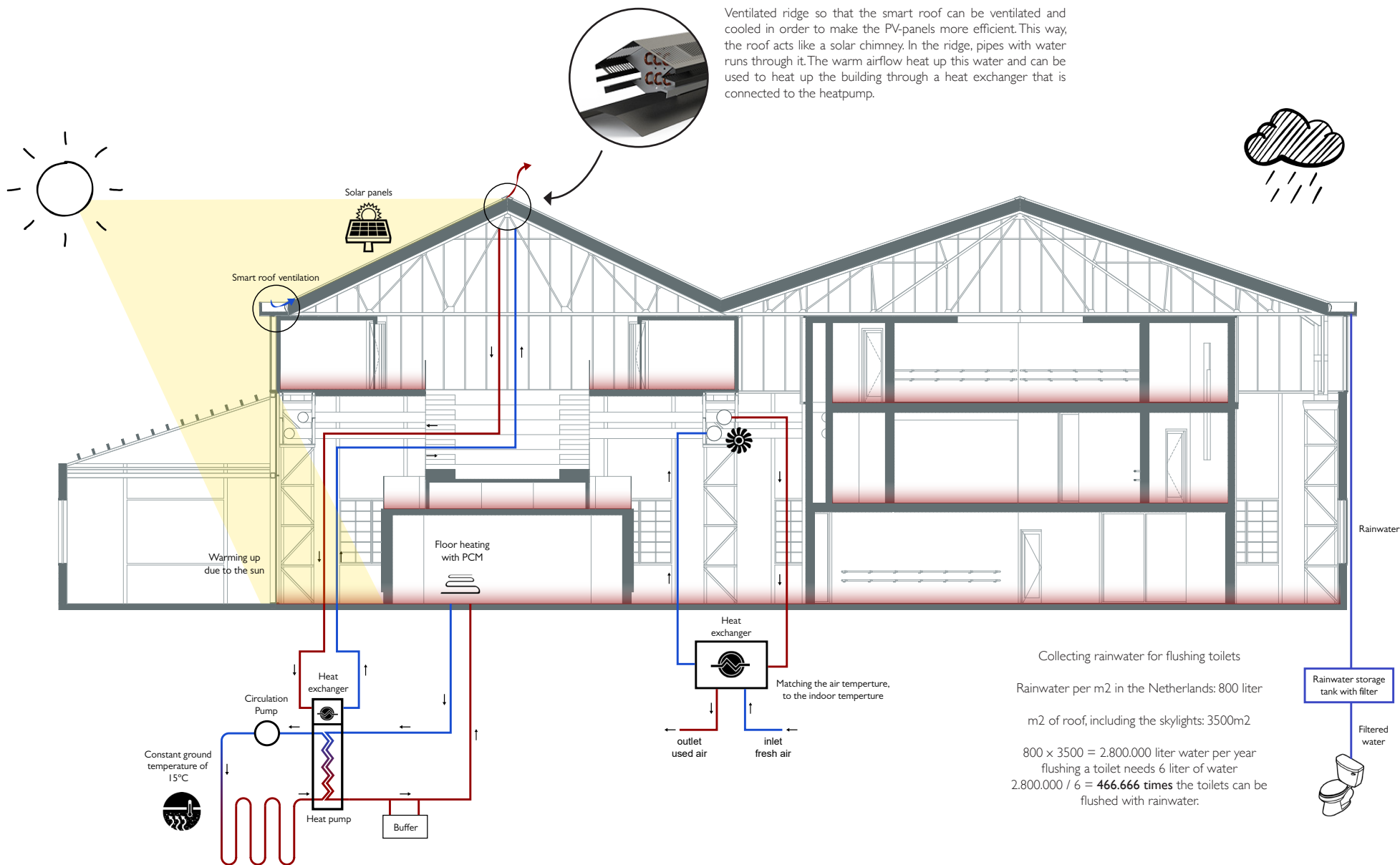


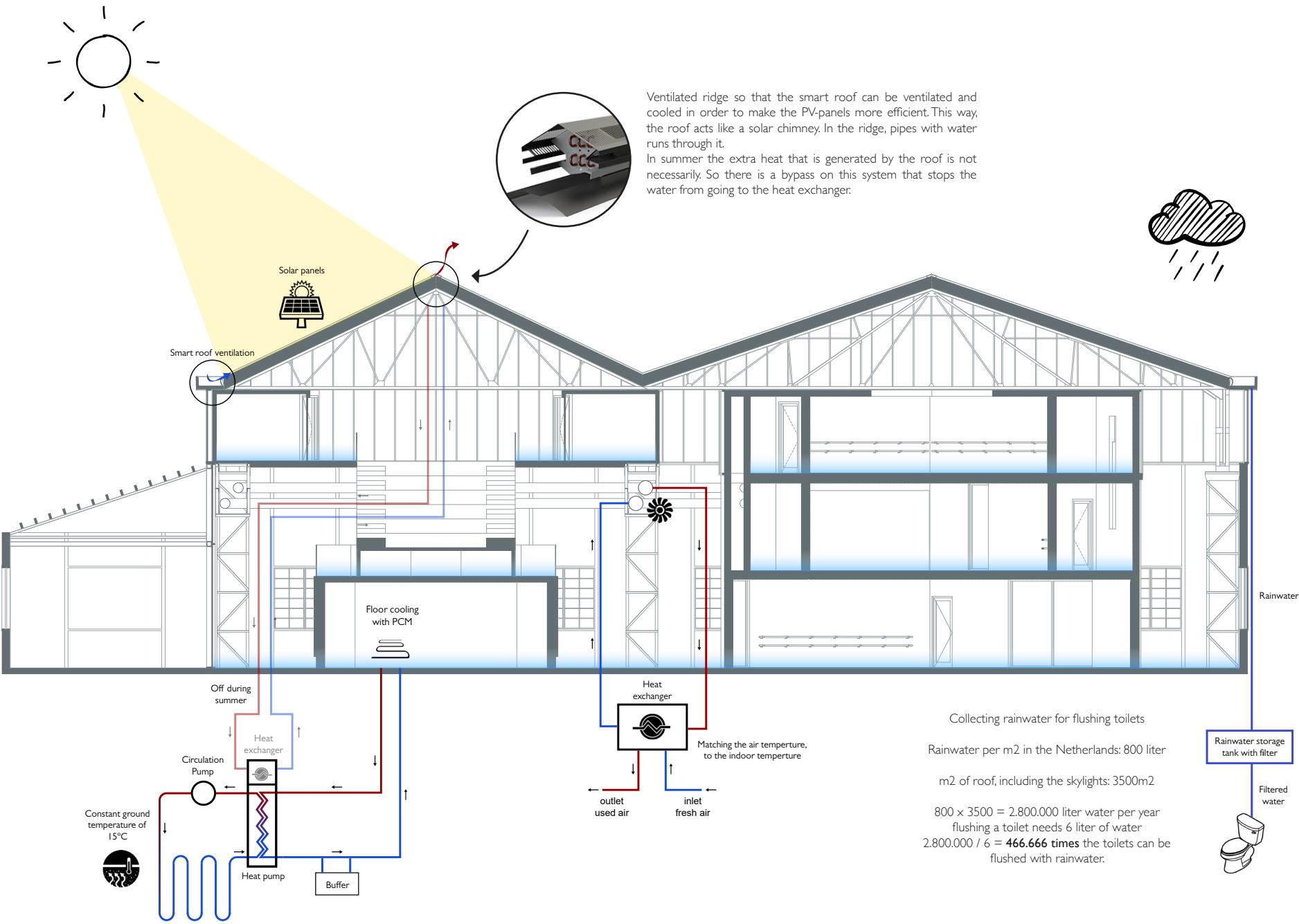
Poured concrete
with wood grains











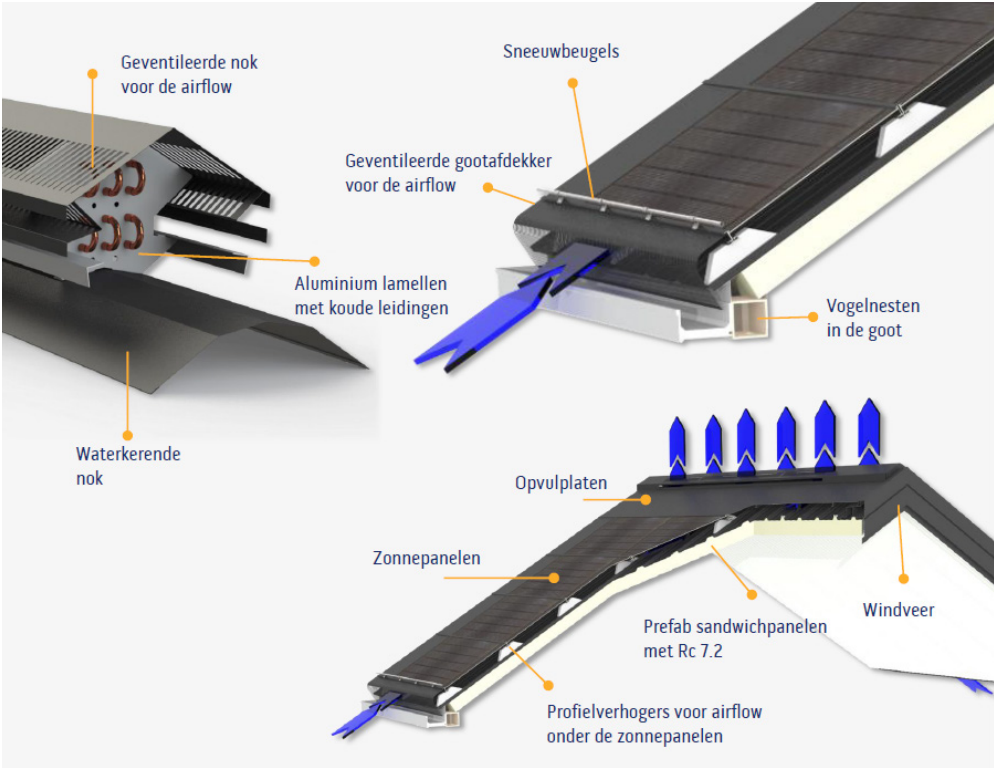
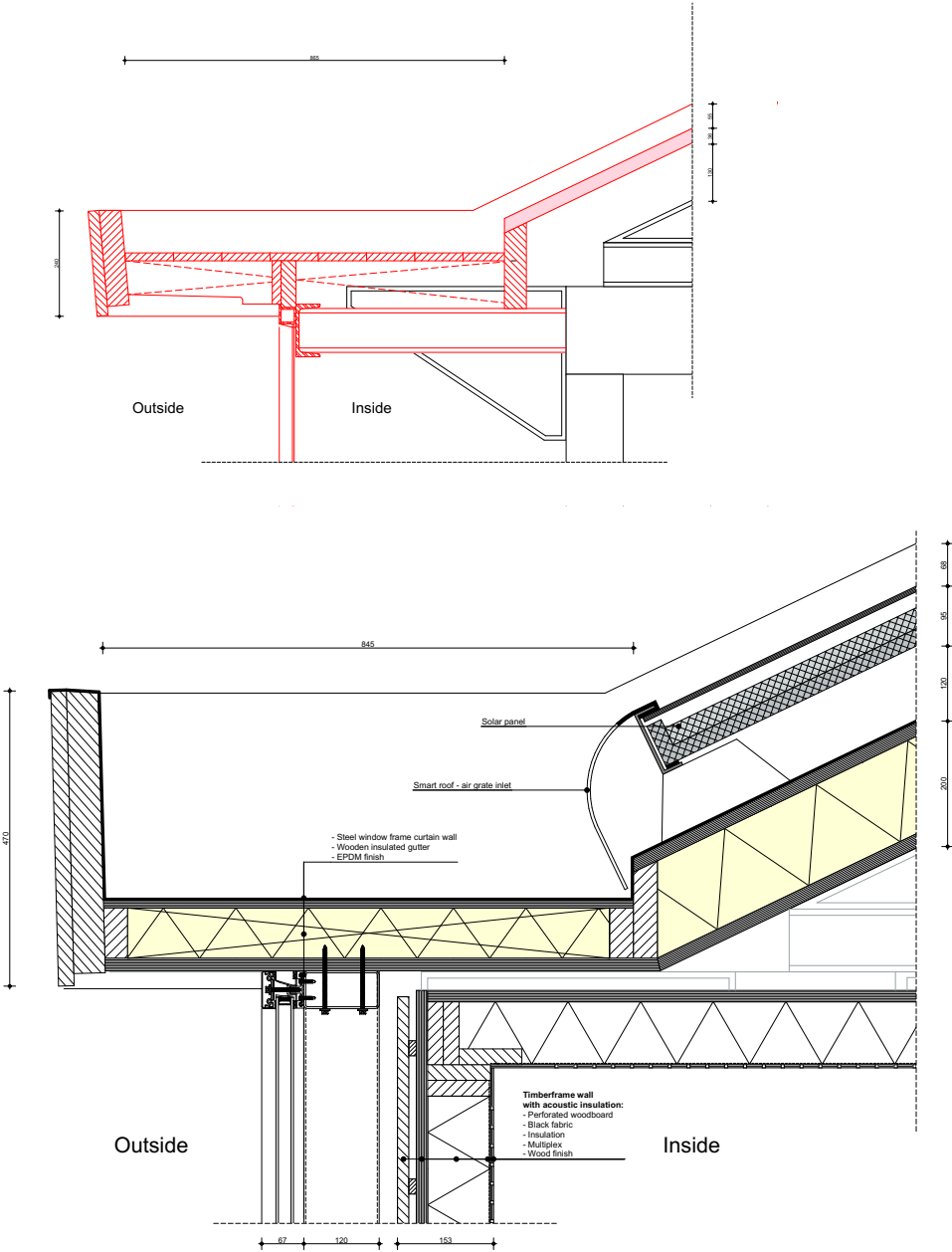
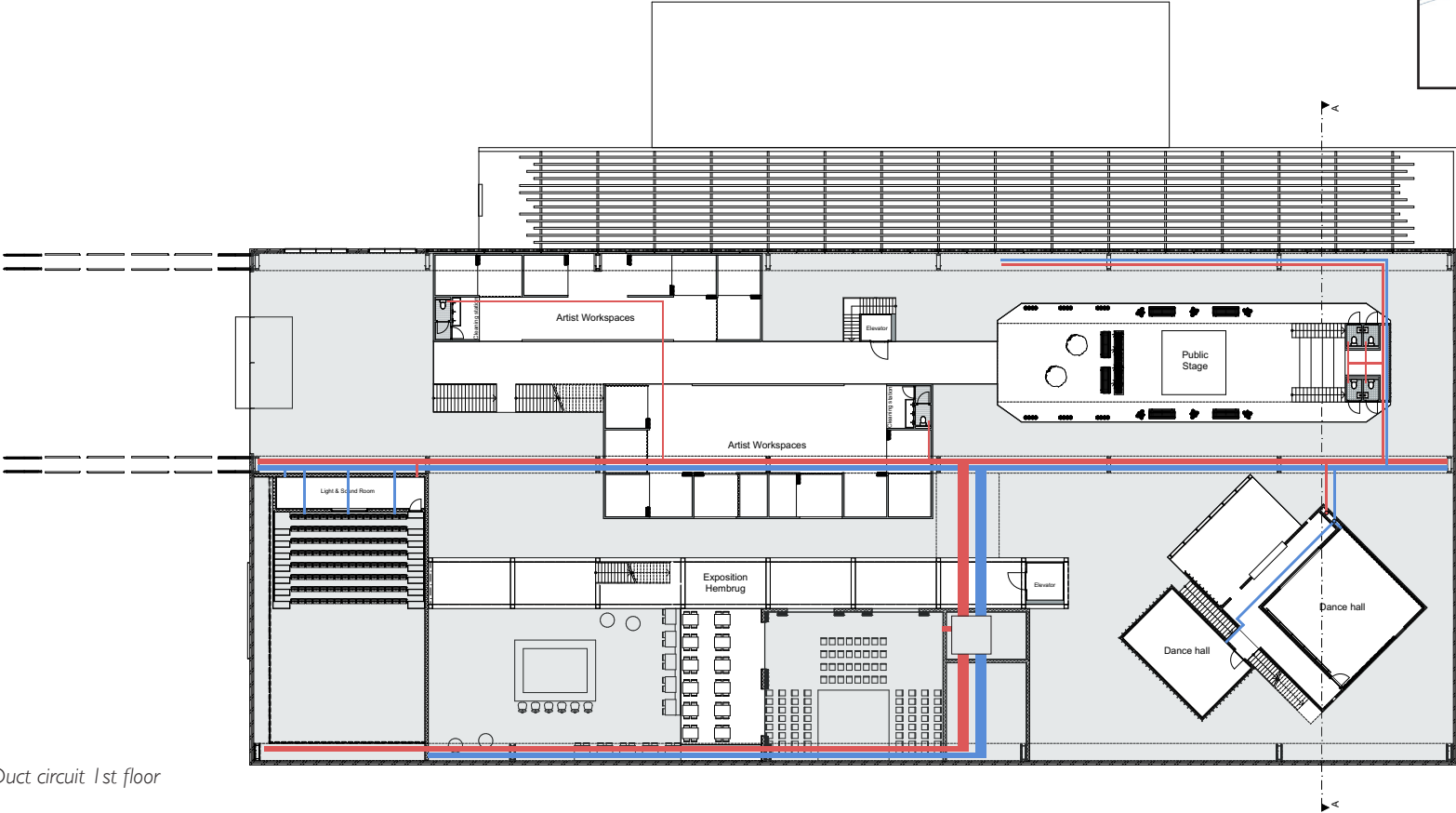
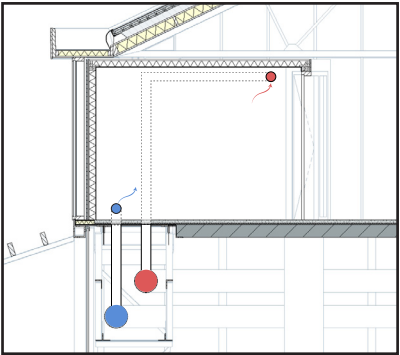


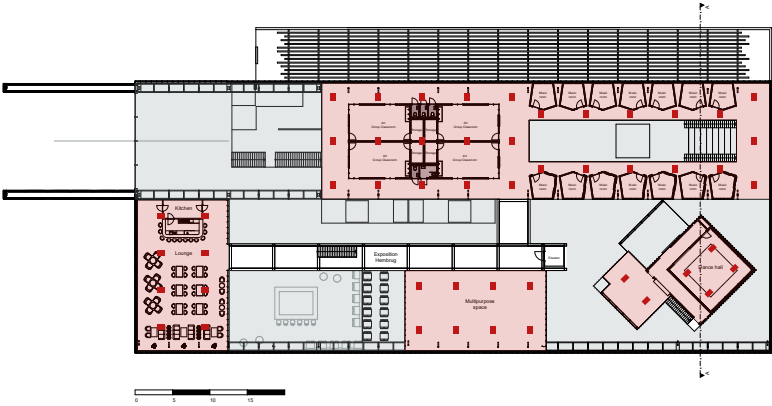
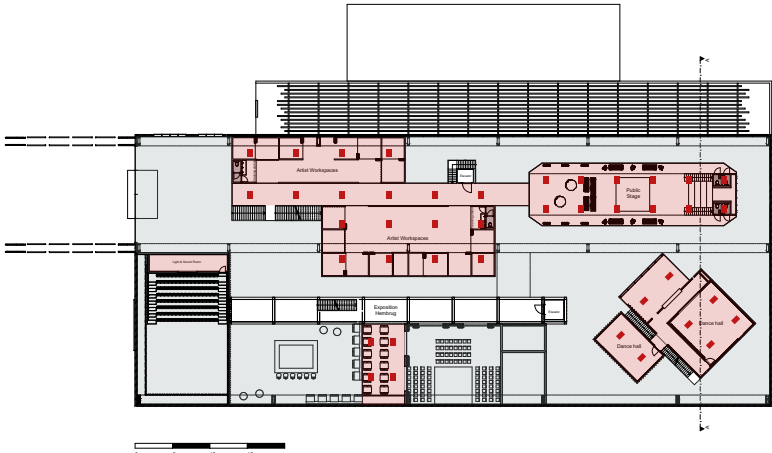
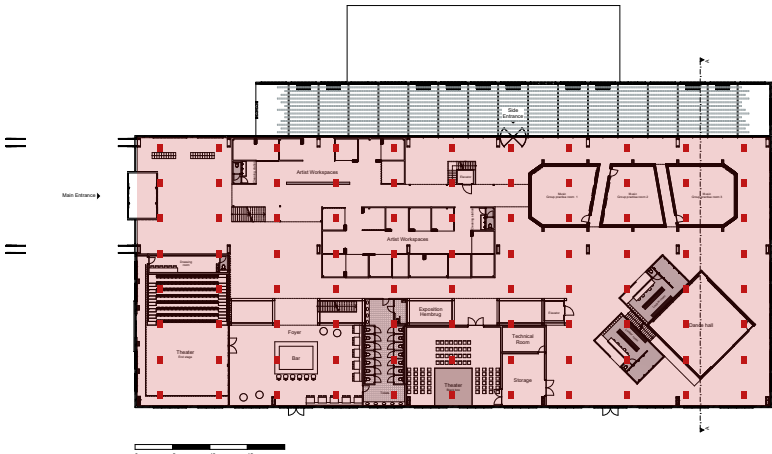
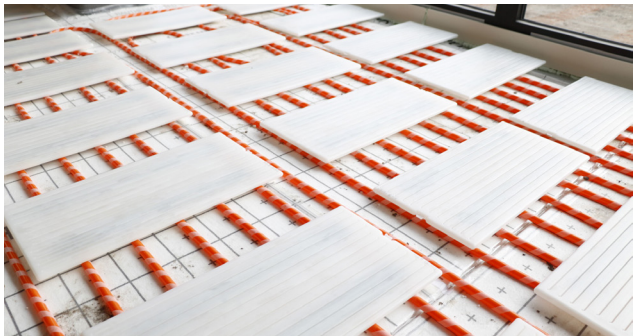
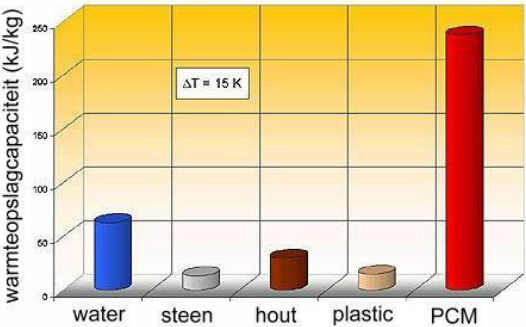
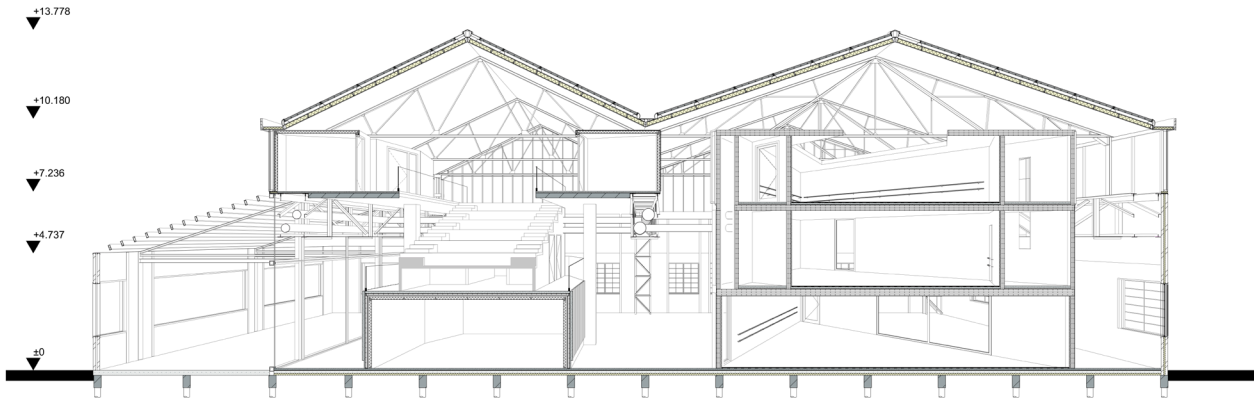
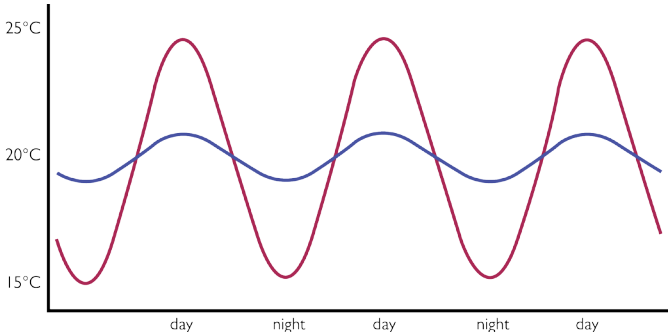
Illustration: Functioning Smartroof
source: Tegniss smartroof



Duct circuit 1st floor

Blue is inlet fresh air
Red is outlet

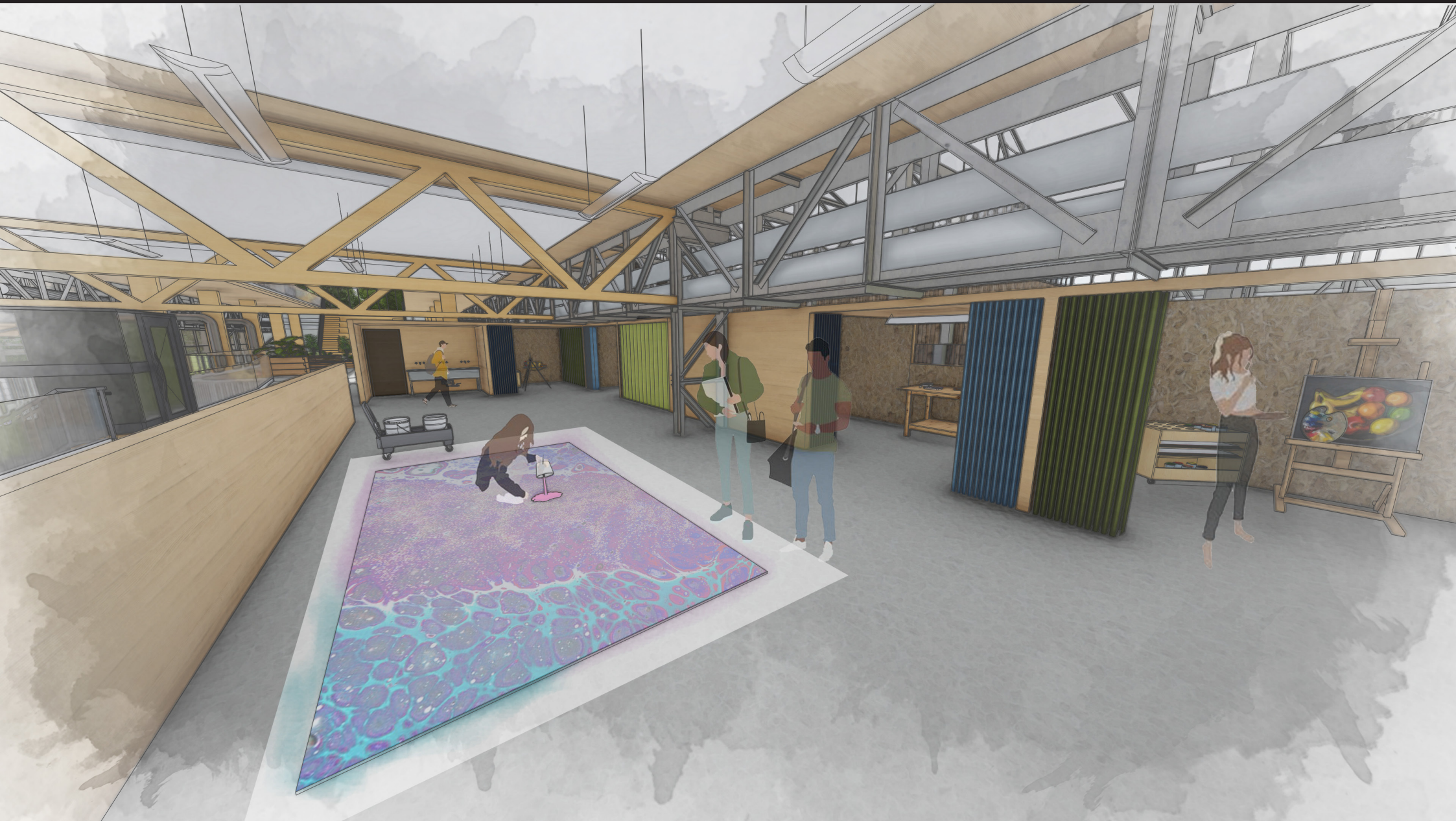
















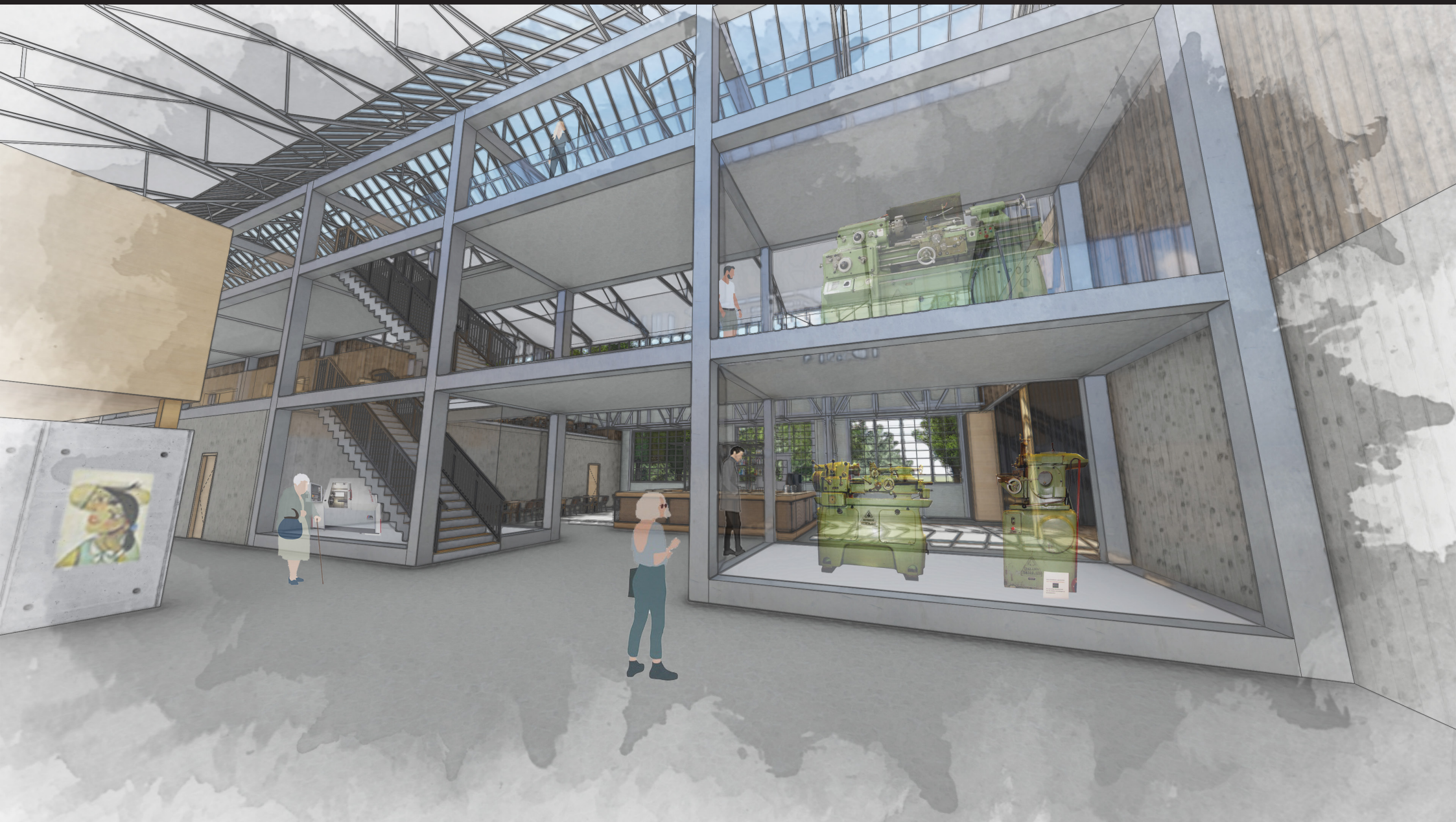










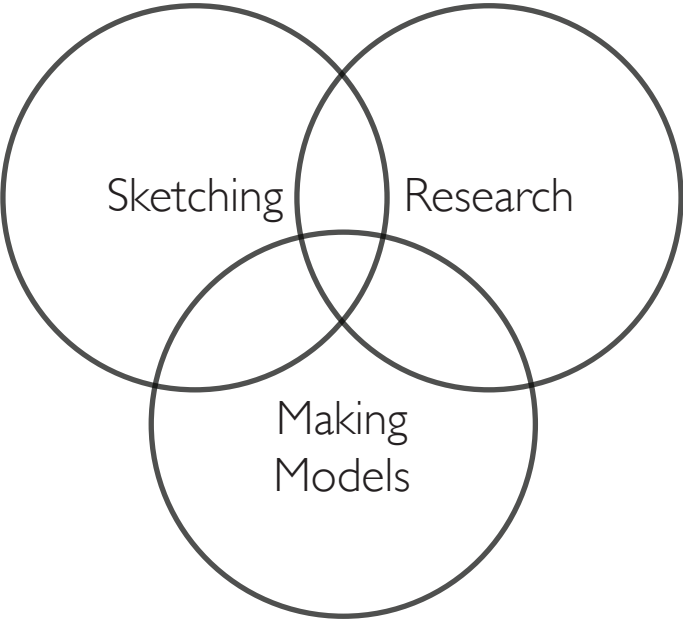
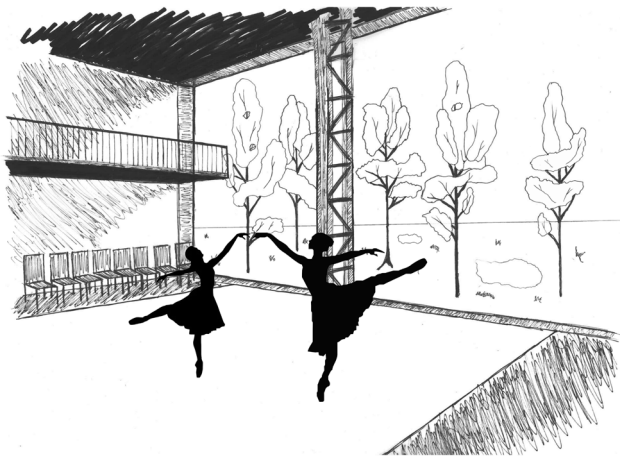




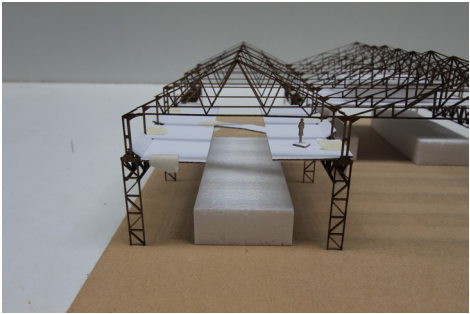




- 1 - Context
- 2 - Cultural Value
- 3 - Design
- 4 - Reflection**



Shoebox
Studio Multiform
Thrust Multipurpose Dance
Vineyard
theater
OperaHouse Courtyard
Endstage ConcertHall Promenade
Arena RecitalHall
Proscenium Environmental
BlackBox



QUESTIONS?

