

Detection of harvested trees in forests from repeated high density airborne laser scanning

Pietrzyk, Peter; Lindenbergh, R. C.

DOI

[10.5194/isprsannals-II-5-275-2014](https://doi.org/10.5194/isprsannals-II-5-275-2014)

Publication date

2014

Document Version

Final published version

Published in

ISPRS Annals of the Photogrammetry, Remote Sensing and Spatial Information Sciences

Citation (APA)

Pietrzyk, P., & Lindenbergh, R. C. (2014). Detection of harvested trees in forests from repeated high density airborne laser scanning. *ISPRS Annals of the Photogrammetry, Remote Sensing and Spatial Information Sciences*, 2(5), 275-280. <https://doi.org/10.5194/isprsannals-II-5-275-2014>

Important note

To cite this publication, please use the final published version (if applicable). Please check the document version above.

Copyright

Other than for strictly personal use, it is not permitted to download, forward or distribute the text or part of it, without the consent of the author(s) and/or copyright holder(s), unless the work is under an open content license such as Creative Commons.

Takedown policy

Please contact us and provide details if you believe this document breaches copyrights. We will remove access to the work immediately and investigate your claim.

DETECTION OF HARVESTED TREES IN FORESTS FROM REPEATED HIGH DENSITY AIRBORNE LASER SCANNING

P. J. Pietrzyk ^{a,*}, R. C. Lindenberg ^b

^a MSc Geomatics, Delft University of Technology, The Netherlands - p.j.pietrzyk@student.tudelft.nl

^b Dept. of Geoscience and Remote Sensing, Delft University of Technology, 2628 CN Delft, The Netherlands - r.c.lindenberg@tudelft.nl

KEY WORDS: Laser scanning, LIDAR, Change detection, Segmentation, Monitoring, Forestry

ABSTRACT:

Identification of harvested and fallen trees is a prerequisite for the detection and measurement of changes in forests. This paper presents a three step approach to monitor harvested and fallen trees based on direct comparison of repeated high density airborne LIDAR data. In a first step differences between data sets are obtained from a point to point comparison, such that the data can be reduced to the deviating points only. Secondly, the resulting points are clustered into spatially connected regions using region growing. Finally, individual trees are extracted from the clusters by analysing their relative proximity and by analysing geometric properties of points in the clusters. Two data sets, acquired at a four year interval and covering a forest with mainly deciduous trees, are compared. First results show that most points relating to a change can be extracted and that clustering of these with region growing enables us to efficiently separate harvested and fallen trees from the remaining trees. Grouped harvested trees could not be separated using the region growing approach due to touching crowns. Segmentation of these using spectral clustering however identified individual regions well, but the results depend mainly on the pre-defined number of clusters. Crowns of grouped trees can be therefore separated if the number of trees is known.

1. INTRODUCTION

Changes in forest environments are caused by many natural processes and anthropogenic interventions. Natural processes range from growth, seasonal variations and competition of individual trees for light and water to disturbances caused by insects, diseases and severe weather conditions like heavy wind gusts and snow. Anthropogenic processes include interventions such as clearing, selective removal of individual trees to improve growth of other trees and selective removal of individual branches to avoid branches falling down or to make room for paths. Due to their occurrence at different spatial and temporal scales, from small to large and from gradual to abrupt respectively, the detection and measurement of changes in forest cover and canopy structure by means of remote sensing remains a challenging task.

In contrast to data from optical sensors, which provide only two-dimensional information, airborne laser scanning (ALS) data provide both horizontal and vertical information. Because of this three-dimensional nature, ALS data is well suited to detect changes in forest cover and canopy structure. The principle of ALS is based on range measurements from an aircraft or helicopter combined with the determination of its position and attitude using a differential Global Positioning System (GPS) and Inertial Measurement Unit (IMU) (Wehr and Lohr, 1999). Modern multiple return and full-waveform laser scanners are capable of generating point clouds with high densities of 100 points/m² and more depending on the scanner settings and flight altitude. Such scanners can provide very detailed three-dimensional information on the structure of trees and forests. If the point density is sufficient to obtain a full vertical point distribution at individual tree level, this information can be also used to delineate individual trees (Rahman and Gorte, 2008, Reitberger et al., 2009, Hu et al., 2014) and to extract detailed information about individual trees such as skeletons and the diameter at breast height (Bucksch et al., 2014). Likewise, by extracting the crown base height, it was shown by Popescu and Zhao (2008) that the vertical point distribution can

be used to extract tree parameters below the canopy surface. Further, changes in forests can be detected even at low point densities by matching the histograms of the vertical point distribution from repeated airborne laser scans (Næsset and Gobakken, 2005, Yu et al., 2006). Thus, ALS data provides not only information on the canopy surface but also on the tree structure below it.

However, studies on changes and dynamics in forests derived from ALS data are so far still limited due to the limited amount of multi-temporal ALS datasets. In addition many of these studies use point clouds with relatively low point densities of approximately ten (Yu et al., 2004) or less points per square meter (Vastaranta et al., 2012, Vepakomma et al., 2008). Most of such studies use canopy height models (CHM) to derive changes in height, to detect harvested or fallen trees and to study tree gap dynamics. The use of CHMs is practical in most applications as it reduces the amount of data and therefore benefits simplicity and efficiency, but it does not exploit the full content of information. In addition, the actual tree height is often underestimated in ALS based tree height assessments due to under-sampling, which can be only partly corrected by regression models (Leeuwen and Nieuwenhuis, 2010). Smaller trees, such as suppressed or intermediate trees, might not even be represented in a CHM because their crowns are partly or totally covered by crowns of more dominant trees. The potential of three-dimensional ALS data to detect changes in forests is thus often not realized. It has been therefore suggested to use the full height distribution of multi-temporal ALS data to detect changes in forests, such as fallen trees, defoliation and thinning, more reliably (Vastaranta et al., 2012).

In response to advancements in technology, which make high density and multi-view ALS data available, and the ineffectiveness of CHMs to exploit the full information in ALS data we assess in this paper how the whole available vertical distribution can be used to detect harvested and fallen trees. Similar to the efficient analysis of CHMs the use of all data points for change detection must not be downgraded by slow and intensive processing. Since the data is of high density, efficient data structures must be used.

*Corresponding author.



Figure 1: Aerial image of Kralingse Bos (Source: Municipality of Rotterdam)

2. DATA AND TEST SITE

2.1 Test Site

The study area is the Kralingse Bos, a forested area of about one km² in size and located in Rotterdam in the Netherlands, see Figure 1. The area is flat with elevations ranging from three meters below to one meter above mean sea level. The trees are mainly deciduous containing several species including poplar, willow, oak, European beech, maple, European hornbeam and European ash. Tree heights range from approximately 15 to 40 m. The area is a sustainably managed, recreational and urban forest. The management of the forest has changed from a more traditional approach, which included removal of coarse dead wood and dying trees and branches, to the current more sustainable approach. The forest is characterized by multiple layers of canopy and trees of different ages. Decaying fallen trees and branches are left on the ground, giving substrates for insects, bacteria, fungi and mosses, and thereby helping to maintain biodiversity.

2.2 Laser Scanning Data

Two ALS data sets, made available by the municipality of Rotterdam, are used for this study. The first data, which was acquired in fall 2008 during leaf-on conditions, has a density of about 30 to 50 pulses/m² and due to multiple returns per pulse resulted in up to 200 points/m². The system scans in front of, below and behind the platform to reduce occlusion effects. Furthermore, cross-strips were acquired over the whole area. The second data set was acquired in spring 2012 during leaf-on conditions in cross-strips with a full-waveform scanner and was subsequently discretized; see Figure 2 for a digital surface model derived from the data set. The density is approximately 50 pulses/m², which, similarly to the first data set, resulted in up to 200 points/m² in the forested area.

3. METHOD

In this section the process to detect harvested and fallen trees is presented. The basic idea of the method is based on a direct comparison of the raw point clouds with subsequent segmentation and

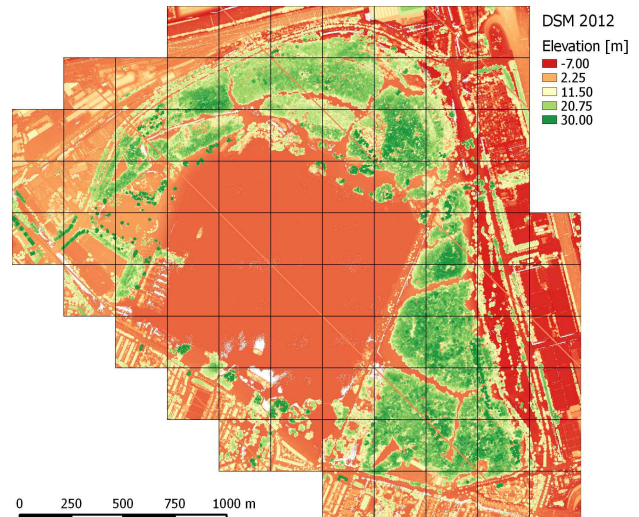


Figure 2: Digital surface model showing the elevations in the Kralingse Bos in the year 2012

classification. The process is therefore divided into three components:

1. Deviating points are determined individually using a modified cloud to cloud comparison, which identifies differences between the data sets.
2. The deviating points are further clustered into spatially connected regions.
3. The clusters are classified into objects, such as harvested trees, undergrowth or noise.

3.1 Identification of Deviating Points

First, the differences between the two point clouds from the different epochs are identified by means of a modified point to point comparison. The essence of our metric is based on the mean of distances from a point in the first epoch to its k closest points in the second epoch, which serves as the reference. This distance, which is equivalent to the Hausdorff distance described in Girardeau-Montaut et al. (2005) if k equals one, can be computed for each point of the first epoch with respect to the second epoch and is indicative of changes between both epochs. A low value of this distance indicates that no change has occurred, while a large value indicates that there has been a change. For example, points in the first data set, which belong to a tree that exists in the first data set but not in the second, will have a large distance. For these points the closest points in the second data set will in fact belong to structures that still exist, like the ground or neighbouring trees, which, however, might be far away.

To identify changes more robustly our distance is not computed as the distance to the single closest point only, but instead as the mean of distances to the k closest points, where k is a user defined parameter larger than one. Even though this distance automatically increases for all points as k is increased, it gives a more robust measure of differences between the data sets. In this way outliers, which could be caused by measurement errors, occlusion, varying point densities, effects due to wind or small changes, are better handled. For the remainder of this paper we henceforth call this distance the robust cloud to cloud distance.

To separate changes from non-changes a threshold is defined for the robust cloud to cloud distance, such that points with a value above this threshold are classified as change. All remaining points are not considered to be changes and belong to the same object in the reference epoch. Rather than using a unique threshold for all points in the data set, which would give a noisy result if set too low and exclude changed objects or parts of changed objects if set too high, the threshold includes two components, a unique global and a variable local parameter.

The local parameter is calculated as follows. For each individual data point in the first data set the k closest points in the second data set are considered. At each of these k points the mean of the distances to its k nearest neighbours in its own, i.e. the second, data set is calculated. We further take the mean of these values; thus overall the mean of k^2 distances. The local parameter thus depends on the local spread between points in the reference data, making it adaptable to variations in point density caused by either the scanning or the object geometry. It can be understood as a normalization distance for our robust cloud to cloud distance. The local threshold further adapts automatically to increases in the robust cloud to cloud distance caused by choosing larger number of closest points k . The second component of the threshold, the global parameter T_g , is a unique user defined value added on top of the local values and functions solely as a buffer.

The above described method is implemented using a kd-tree data structure to search for nearest neighbours. In this way the neighbourhood of each point can be analysed and for each point the robust cloud to cloud distance can be efficiently determined.

3.2 Clustering of Deviating Points

To extract single trees the identified deviating points are first segmented into clusters which separate the differences into spatially connected regions. Here region growing is used with the point having maximal robust cloud to cloud distance as seed. Starting from this seed the cluster is grown to close-by neighbouring points. Close-by neighbouring points are defined as a subset of the k nearest neighbours, which must be classified as change and which are within a distance of one meter to the seed. From these points the cluster is grown further in a similar manner until all candidate points are added to the cluster. This procedure is stopped when no more candidate points are available for the cluster. Subsequently a new cluster is grown from the remaining points starting again at the point having the maximal robust cloud to cloud distance as seed. This is iterated until no more points are available as seeds.

3.3 Individual Tree Extraction

In the last step these clusters are analysed to identify whether they are in fact trees or other objects. All clusters with a low amount of points are removed in order to exclude small objects resulting either from minor changes, such as small damages to trees, or noise. Further, clusters containing only undergrowth, which can be identified by their low elevation and spatial distribution, are removed. The remaining clusters should be further classified as trees if applicable. It is expected that this can be done using the geometric shape of the clusters and a principal component analysis (PCA) on the neighbourhood of each point to identify stems. A comparable approach has been presented by Bremer et al. (2013) previously. At each point the three eigenvalues and eigenvectors are calculated using a PCA on the coordinates of the point in question and its k nearest neighbours. Due to the elongated and cylindrical shape of stems the points on a stem are characterized by a large first eigenvalue compared to the other two

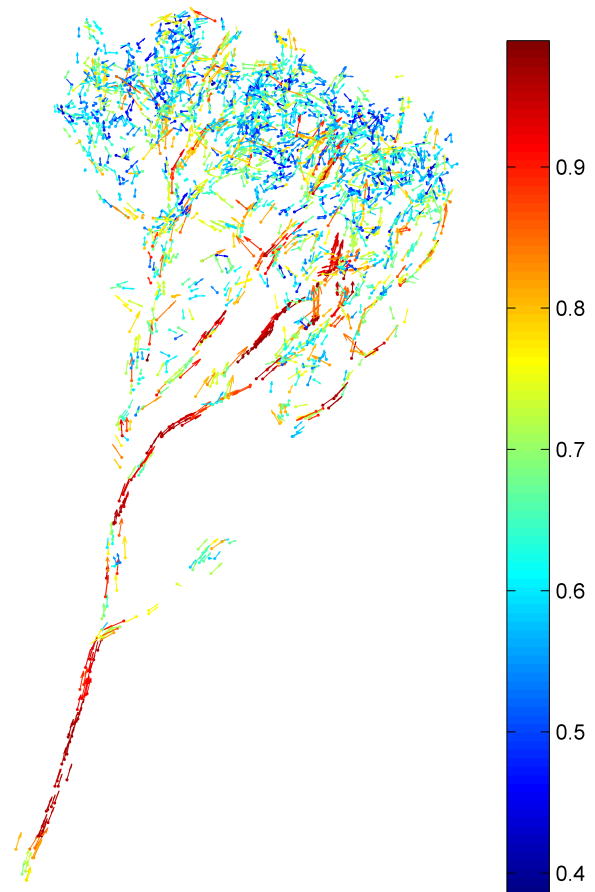


Figure 3: A tree coloured by normalized largest eigenvalue at each point. The arrows depict the directions of the corresponding eigenvectors.

eigenvalues. Further it is assumed that for stem points the largest eigenvalue corresponds to an eigenvector that points in vertical direction. The three eigenvalues of points in tree crowns on the other hand have mainly similar values. As can be seen in Figure 3, a cluster can be classified as a tree if the lower part of that cluster consists of points with large first eigenvalue compared to the other two eigenvalues and the corresponding eigenvector pointing in vertical direction. The upper part of the cluster contains points with a relatively small first eigenvalue that is similar to the other two eigenvalues.

4. RESULTS

The first and second step of the described method have been applied to a subset of the test site covering an area of 100 times 100 m with a high number of removed trees and changes in the undergrowth between the years 2008 and 2012. The corresponding results are described in this section. For the classification of individual trees further research is required.

4.1 Identification of Deviating Points

To identify points in the 2008 data, which deviate from the points in the 2012 data, the robust cloud to cloud distance was computed, with k set to ten. Similarly the local parameter was obtained by considering the ten nearest neighbours in the 2012 data. The global parameter T_g was set to 0.5 meters. Using this setting the number of points in the 2008 data was reduced from

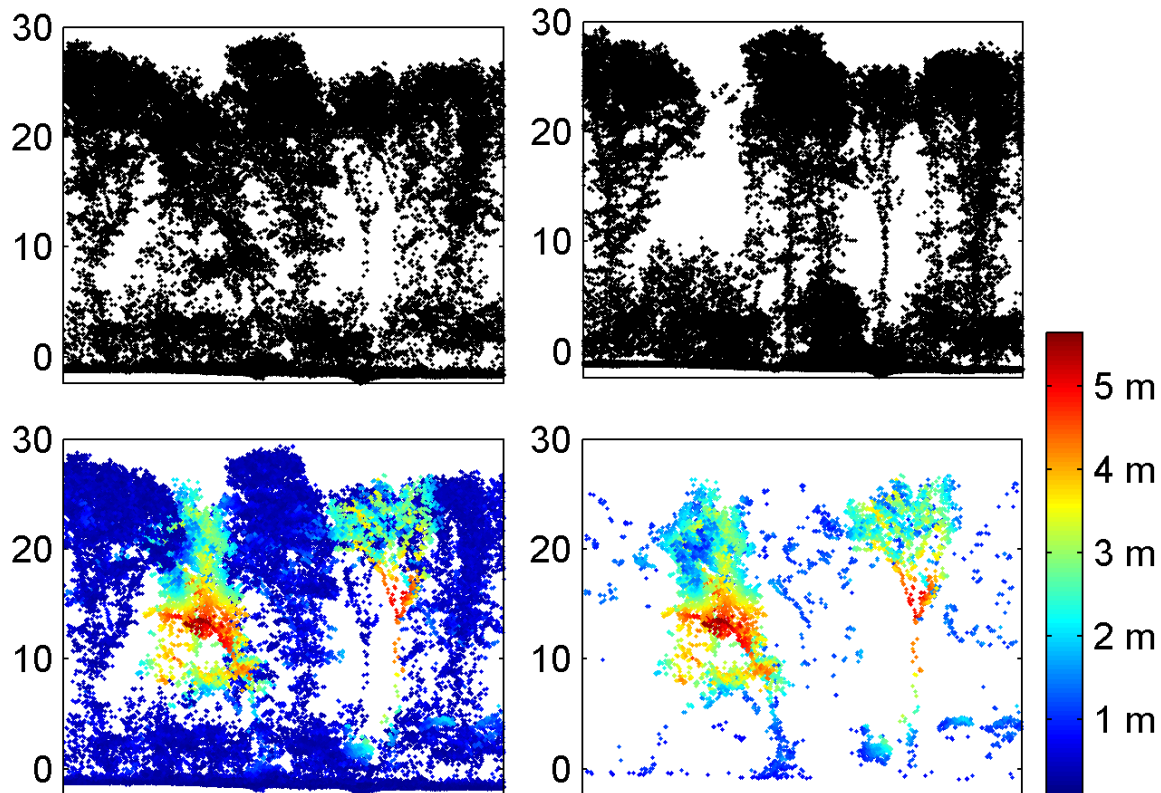


Figure 4: Side view of a small forest patch in 2008 (top left) and 2012 (top right) where two trees have been removed. The robust cloud to cloud distance calculated with $k = 10$ is given in the bottom left and the points identified as change in the bottom right image using a global threshold T_g of 0.5 m.

1,146,848, including ground points, to 92,659, thus a reduction of more than 90 percent. These 92,659 points are expected to sample objects that disappeared between 2008 and 2012. The results and the original data for a small forest patch can be seen in Figure 4. In the upper left and right images the cross sections of a small forest patch is presented in the years 2008 and 2012, respectively. A closer look reveals that not only two trees have been removed but also the point density in undergrowth and tree crowns differs. The resulting robust cloud to cloud distance can be seen in the lower left image and shows that for some parts of the removed trees the closest points in the reference data is as far as five meters away, which strongly indicates a change. In the lower right image of Figure 4 only the points which remained after applying the threshold are shown. All parts of the removed trees are classified correctly as change, but also some smaller patches from other trees and undergrowth are classified as change. These classifications do not necessarily have to be wrong, but are not desired and therefore have to be removed at a later processing step.

Tests with different values for k showed that with a low value of k often a relatively small robust cloud to cloud distance is calculated for parts of actually removed trees, where for example undergrowth is close to the stem, where the stem is close to the ground or where the crowns of trees are very dense. A larger value for k reduced this effect slightly. Even though the robust cloud to cloud distance increases globally for a larger k the points corresponding to change can still be isolated from points that do not correspond to changes. To separate the actual change from noise a low value for the global component T_g of the threshold was sufficient and can be in the order of half a meter to a meter. If set too low or equal to zero, a large number of points are classified wrongly as change and if set too large real changes might

not be spotted. This is similar to the behaviour of using a unique threshold value for all points, but the two component threshold performs better in areas with changing point densities.

A wide range of effects that can cause differences between the data sets in the tested area are apparent. These range from differences caused by the natural or anthropogenic changes in the area, like growth, and differences caused by the acquisition like scanning geometry, point density or noise. Nevertheless the most significant large scale changes have been correctly identified using our direct comparison approach.

4.2 Clustering of Deviating Points

The points identified as change have been further clustered into spatially connected segments using the described region growing method. Due to the algorithm starting at the points with largest robust cloud to cloud distance the initial clusters correspond to large changes and result mostly in large clusters containing hundreds to thousands of points. These corresponded mainly to individual trees and groups of trees. On the other hand, the clusters that are found later, i.e. those clusters that have seeds with a lower robust cloud to cloud distance, corresponded to smaller changes. These clusters are generally small, consisting of tens of points or less, and very frequently just single points. To avoid formation of dozens of such tiny clusters the new clusters were formed only if the remaining seeds had a robust cloud to cloud distance of at least 1.5 m. Finally, small clusters with less than 100 points resulting from seed points with robust cloud to cloud distance larger than 1.5 m were removed in a post-processing step. The result is shown in Figure 5. Indeed mainly complete trees are left after clustering and cleaning up small clusters. All detected harvested

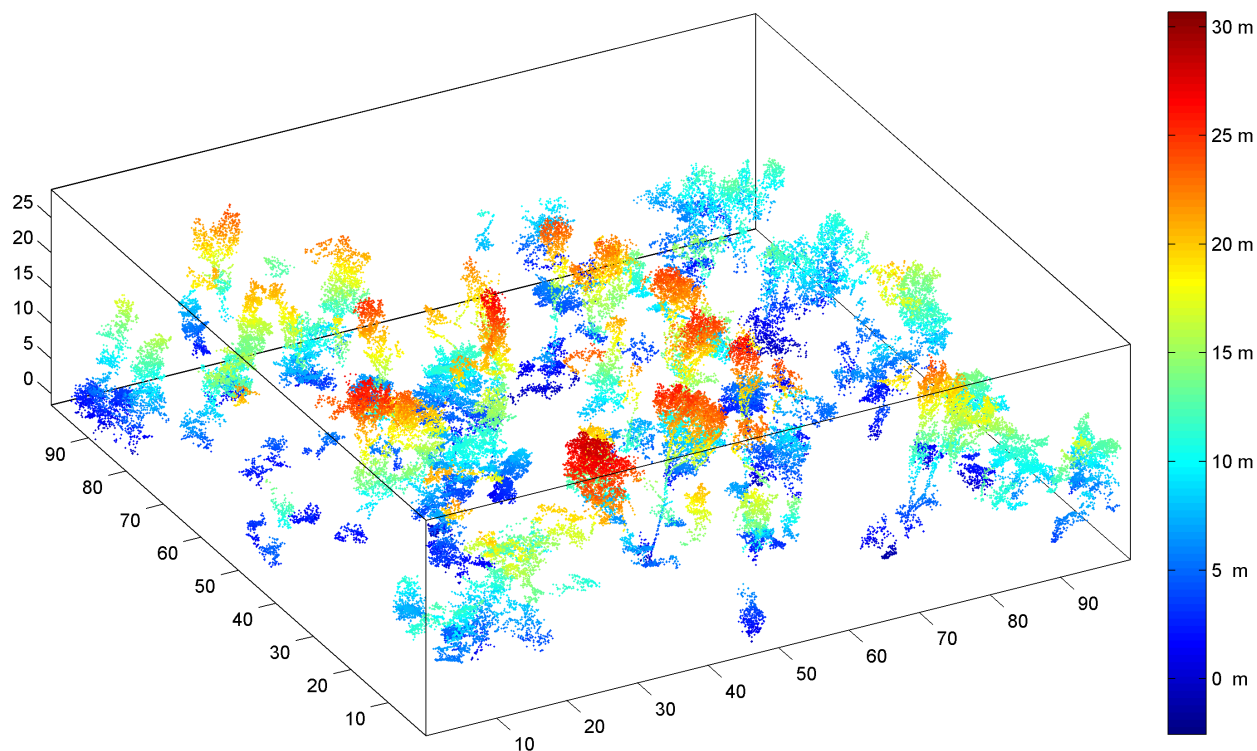


Figure 5: Resulting objects identified as change after region growing and removing of clusters smaller than 100 points. The points are coloured by their elevation.

trees are present including their crown and most of the stem. Several small patches of undergrowth are still included and should be removed in another processing step.

Next to segmentation by region growing it is proposed to use an approach based on spectral clustering. Here the implementation described by (Chen et al., 2011) will be tested. In this approach the spatial connectedness of neighbouring points is used to segment the point cloud into a predefined number of clusters. First tests have shown that spectral clustering is suitable to delineate neighbouring trees. However the main disadvantages at the moment are the long computation time and the requirement of knowing the number of clusters in forehand.

5. CONCLUSIONS

In this paper a method to detect harvested and fallen trees from repeated airborne laser scanning data was presented. In a first step all points that deviate from the reference data were identified, thereby greatly reducing the amount of data for further processing. Next, spatially connected points were clustered and small groups of the resulting points are removed. In the final result the removed trees can be identified by a human operator. Further research is however required to learn how the used parameters, like the number of considered closest points k , the global component T_g of the threshold, and the region growing threshold can be optimized. Further research is also still needed to automatically identify individual trees from the clustering results.

The advantages of the proposed method over methods based on canopy height models are an increase of accuracy due to the exploitation of the three dimensional information in the data and the ability to detect changes below the canopy surface. Considering more than one closest point in the cloud to cloud comparison

and using a local threshold has shown to decrease adverse effects caused by measurement errors, occlusion, varying point densities, effects due to wind or small changes.

In the future the results of the presented method will be validated using small patches in the test site and then applied to the full area. In addition the method will be tested on a data set from 2010, which was acquired during the leaf-off season, in order to test the effect of leaves. It is further planned to compare the obtained results to results from methods based on canopy height models.

ACKNOWLEDGEMENTS

This research is partly funded by the FP7 project IQmulus (FP7-ICT-2011-318787), a high volume fusion and analysis platform for geospatial point clouds, coverages and volumetric data set.

The data for this research has been provided by Stadsbeheer Gemeente Rotterdam.

REFERENCES

- Bremer, M., Wichmann, V. and Rutzinger, M., 2013. Eigenvalue and graph-based object extraction from mobile laser scanning point clouds. *ISPRS Annals of Photogrammetry, Remote Sensing and Spatial Information Sciences* 1(2), pp. 55–60.
- Bucksch, A., Lindenbergh, R., Abd Rahman, M. and Menenti, M., 2014. Breast height diameter estimation from high-density airborne lidar data. *Geoscience and Remote Sensing Letters, IEEE* 11(6), pp. 1056–1060.

Chen, W.-Y., Song, Y., Bai, H., Lin, C.-J. and Chang, E., 2011. Parallel spectral clustering in distributed systems. *Pattern Analysis and Machine Intelligence, IEEE Transactions on* 33(3), pp. 568–586.

Girardeau-Montaut, D., Roux, M., Marc, R. and Thibault, G., 2005. Change detection on points cloud data acquired with a ground laser scanner. *International Archives of Photogrammetry, Remote Sensing and Spatial Information Sciences* 36(part 3), pp. W19.

Hu, B., Li, J., Jing, L. and Judah, A., 2014. Improving the efficiency and accuracy of individual tree crown delineation from high-density lidar data. *International Journal of Applied Earth Observation and Geoinformation* 26(0), pp. 145 – 155.

Leeuwen, M. and Nieuwenhuis, M., 2010. Retrieval of forest structural parameters using lidar remote sensing. *European Journal of Forest Research* 129(4), pp. 749–770.

Næsset, E. and Gobakken, T., 2005. Estimating forest growth using canopy metrics derived from airborne laser scanner data. *Remote Sensing of Environment* 96(3C4), pp. 453 – 465.

Popescu, S. C. and Zhao, K., 2008. A voxel-based lidar method for estimating crown base height for deciduous and pine trees. *Remote Sensing of Environment* 112(3), pp. 767 – 781.

Rahman, M. and Gorte, B., 2008. Individual tree detection based on densities of high points of high resolution airborne lidar. *GEO-BIA* pp. 350–355.

Reitberger, J., Schnörr, C., Krzystek, P. and Stilla, U., 2009. 3d segmentation of single trees exploiting full waveform lidar data. *ISPRS Journal of Photogrammetry and Remote Sensing* 64(6), pp. 561 – 574.

Vastaranta, M., Korpela, I., Uotila, A., Hovi, A. and Holopainen, M., 2012. Mapping of snow-damaged trees based on bitemporal airborne lidar data. *European Journal of Forest Research* 131(4), pp. 1217–1228.

Vepakomma, U., St-Onge, B. and Kneeshaw, D., 2008. Spatially explicit characterization of boreal forest gap dynamics using multi-temporal lidar data. *Remote Sensing of Environment* 112(5), pp. 2326 – 2340. *Earth Observations for Terrestrial Biodiversity and Ecosystems Special Issue*.

Wehr, A. and Lohr, U., 1999. Airborne laser scanning—an introduction and overview. *ISPRS Journal of Photogrammetry and Remote Sensing* 54(2C3), pp. 68–82.

Yu, X., Hyypä, J., Kaartinen, H. and Maltamo, M., 2004. Automatic detection of harvested trees and determination of forest growth using airborne laser scanning. *Remote Sensing of Environment* 90(4), pp. 451 – 462.

Yu, X., Hyypä, J., Kukko, A., Maltamo, M. and Kaartinen, H., 2006. Change detection techniques for canopy height growth measurements using airborne laser scanner data. *Photogrammetric Engineering and Remote Sensing* 72(12), pp. 1339.