

Masculinities in public space

Reshape heteronormative public spaces
to facilitate legitimacy for diverse gender
identities

P5 Presentation
Jonah van Delden
13-06-2022

Today

Problem field

Research

Design

Local Interventions

Conclusion

Problem Field

Hegemonic Masculinity



Most dominant & socially valued form of masculine behaviour

Expressed by courage, confidence & refusal to acknowledge vulnerability

Hostile & inflexible behaviour

Diverse masculinities & other gender identities are not accepted

Problem Field //

Heteronormativity



Expresses the power of the heterosexual relationship in our society

Primarily facilitates families

Forces traditional gender roles where men should work and women taking care

Problem Field //

Modernist Design Perspective



Repetitive & fast housing development results in homogeneous housing types

Homogeneous designs exclude diverse & unique preferences

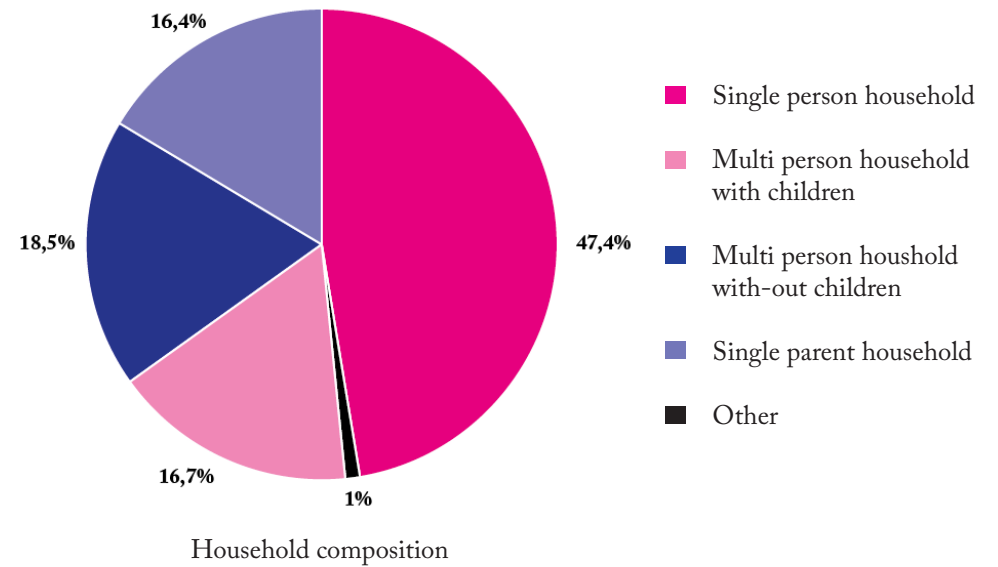
Spatial distances dictate a lifestyle of a working man & a caring women

Demographic Transition

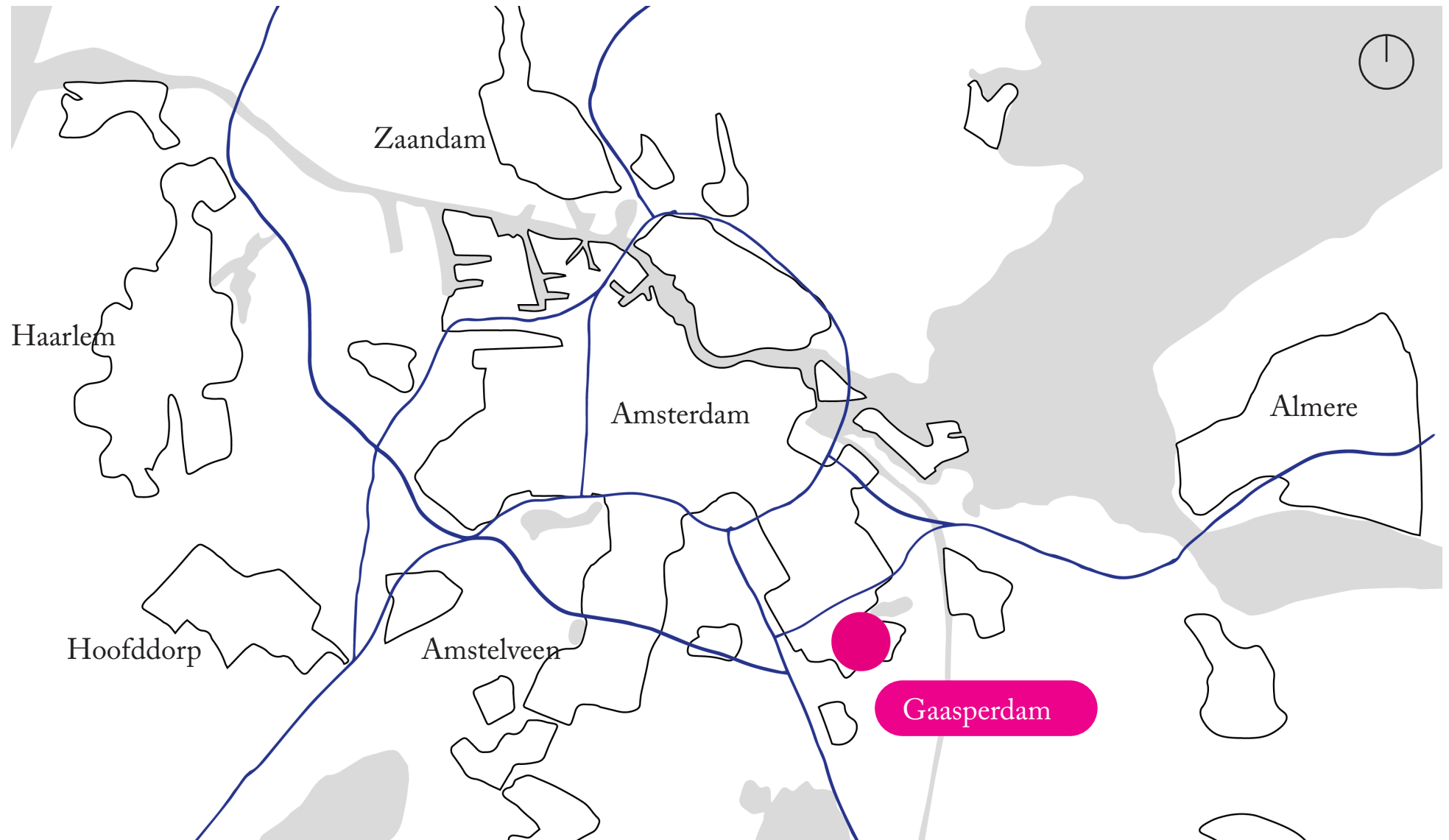
2/3 households are with-out children

Single person household is most dominant

Increasing culturally diverse population



Project Location













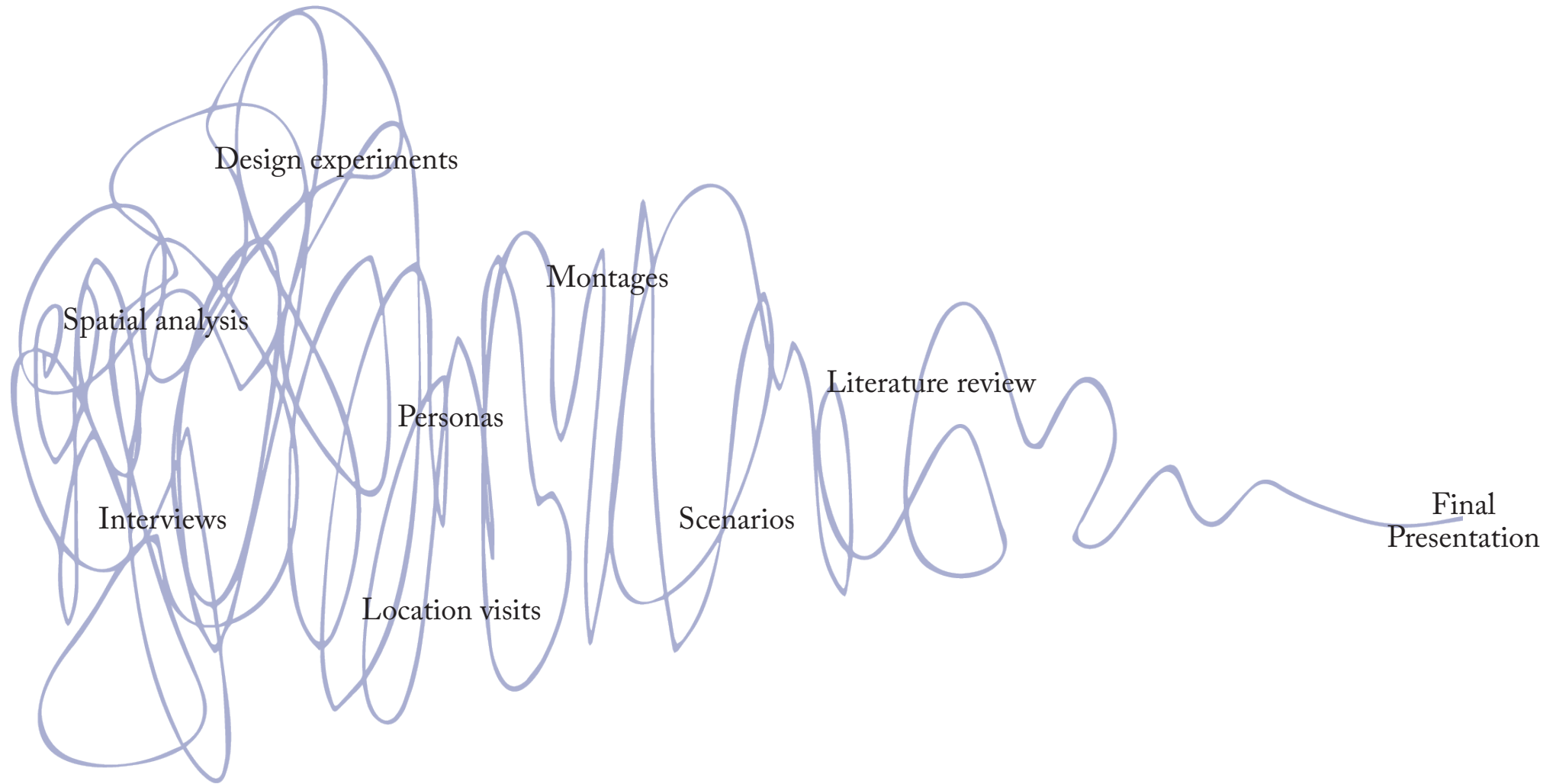
Problem Field //

Research Question

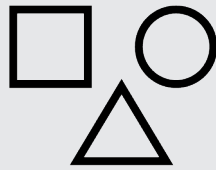
How can we reshape heteronormative spaces
in Gaasperdam to facilitate legitimacy to
diverse masculine identities?

Research

Research by Design



Spatial elements of Heteronormative space in Gaasperdam



1. Monofunctional areas



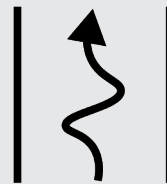
2. Care related programme



3. Different roads to move to move



4. Family housing

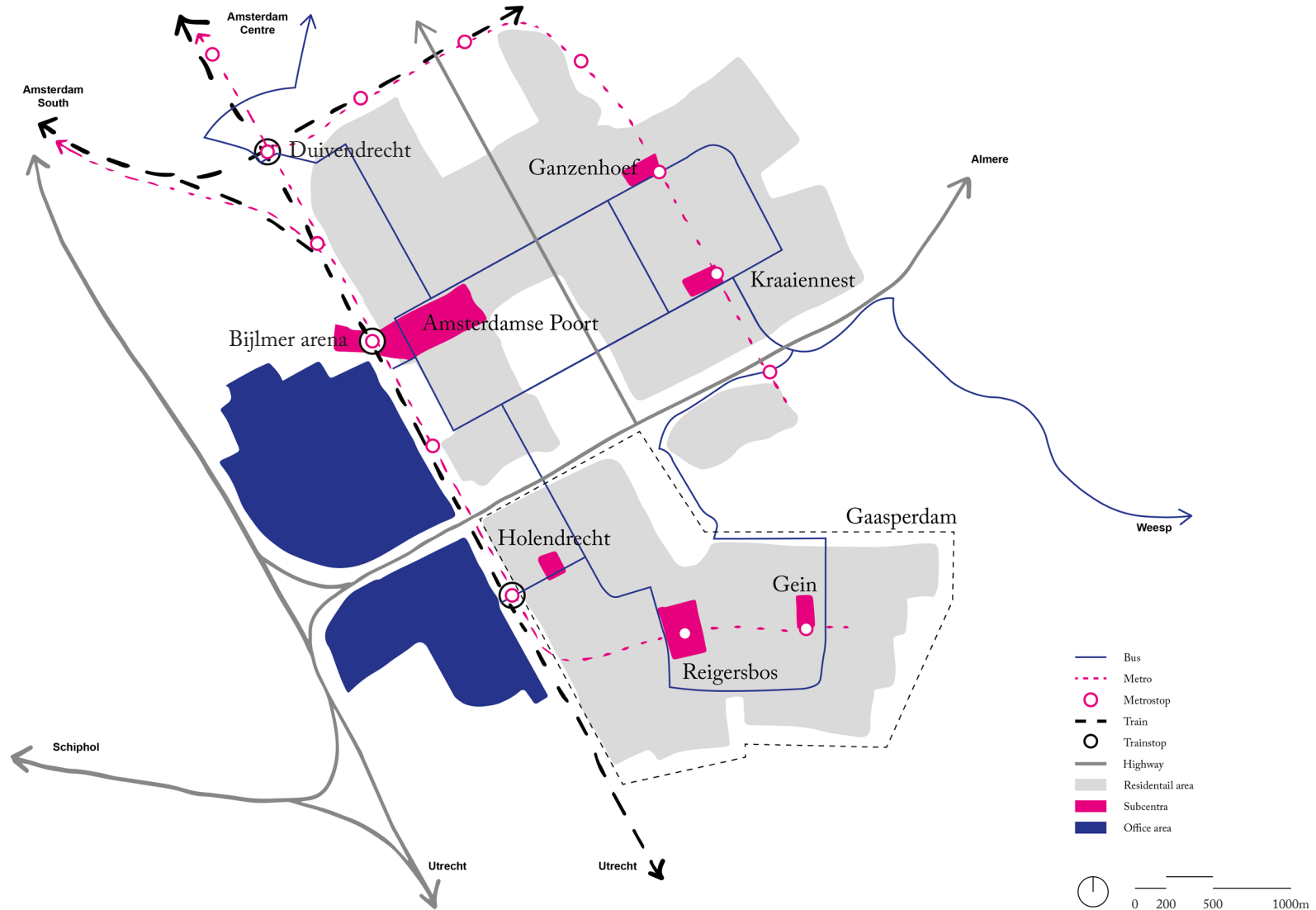


5. Defined lifestyle



6. No space to interact

1. Monofunctional areas



2. Care related programme



Holendrecht



Primary School
Supermarket
Pharmacy
Day Care
Church

Reigersbos



Primary School
Secondary School
Pharmacy
Drugstore
Hairdresser

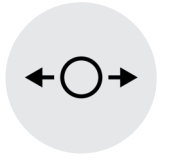
Supermarket
Cafés
Church
Library
Sport Centre

Gein



Primary School
Supermarket
Dentist
Gym
Church

3. Different roads to move



Bicycle infrastructure



Car infrastructure



Strong network within the neighbourhood.

Most efficient to visit the shopping centres

Detached from the local neighbourhood life

Oriented to leave the neighbourhood

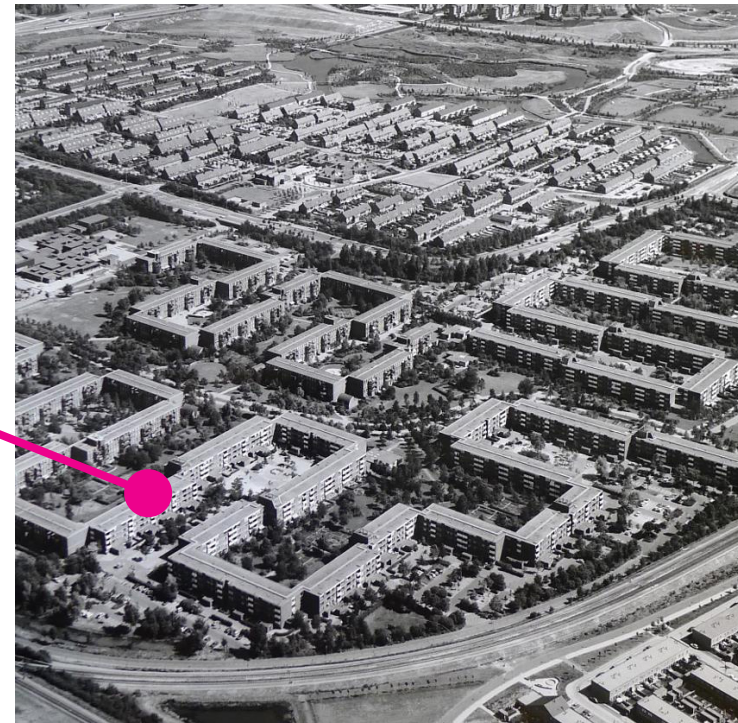
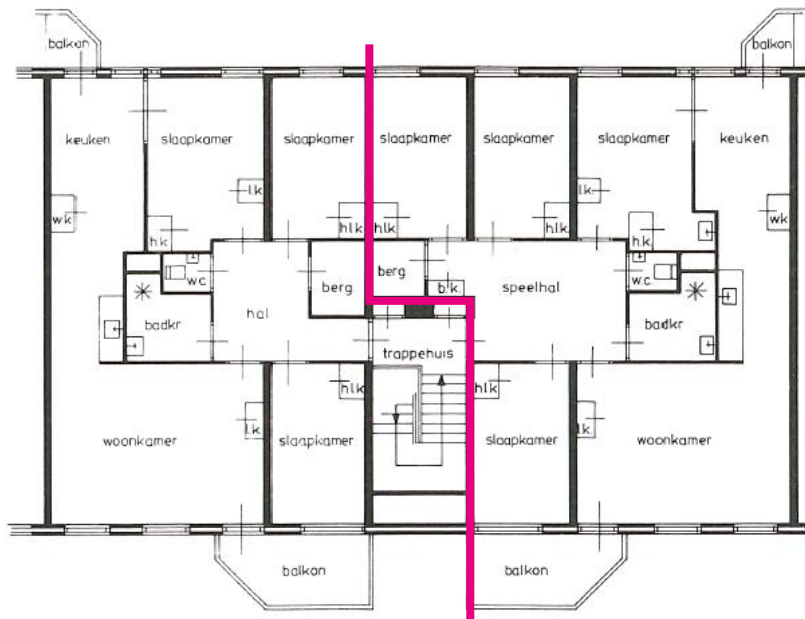
Most efficient to visit the work locations

4. Family housing



65% of all housing has 4 or more rooms

Houses are about 90m², considered a minimum for a good family home

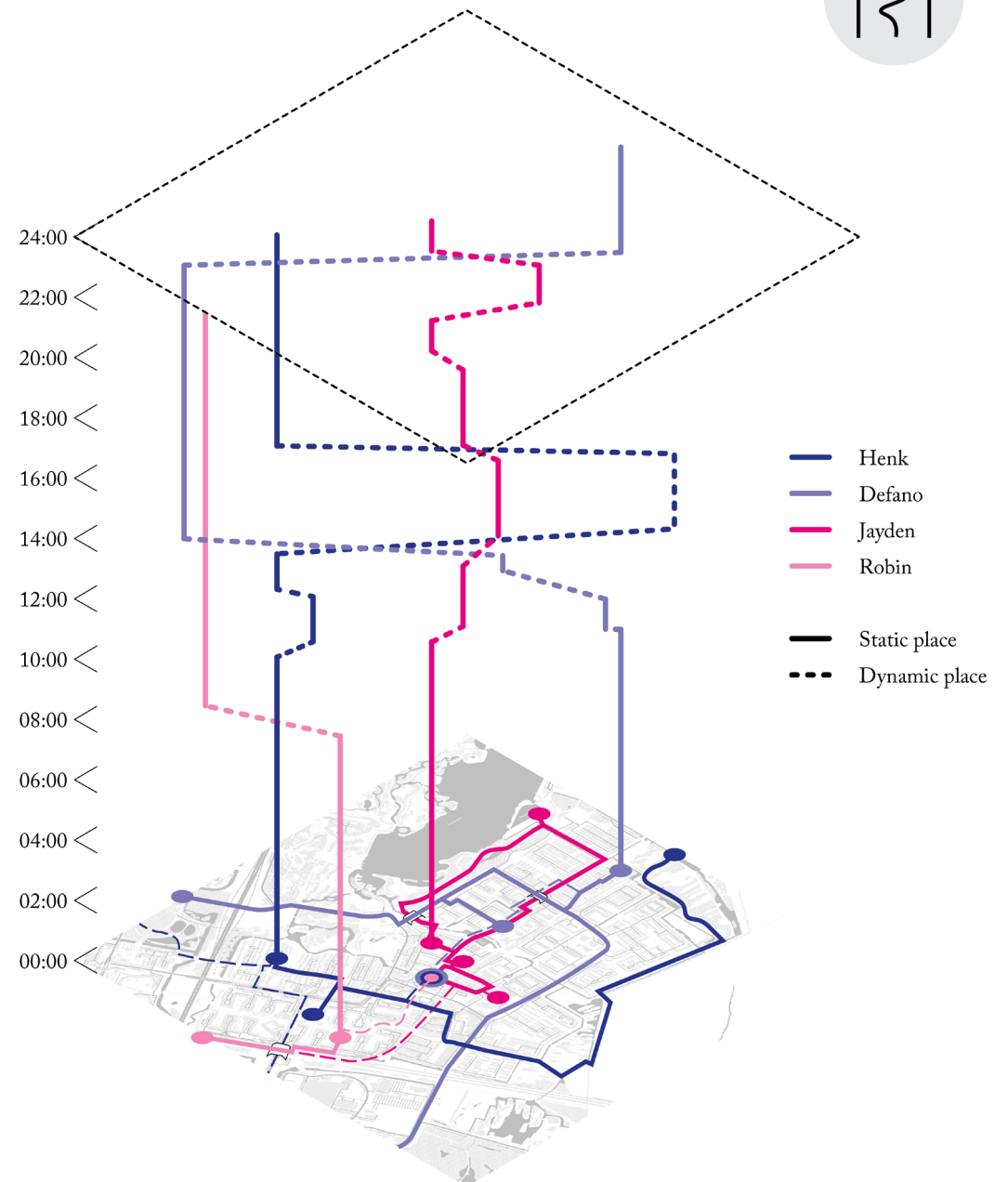


5. Defined lifestyle

People use different spaces

People are active across different times

People need to leave the neighbourhood for work or social activities

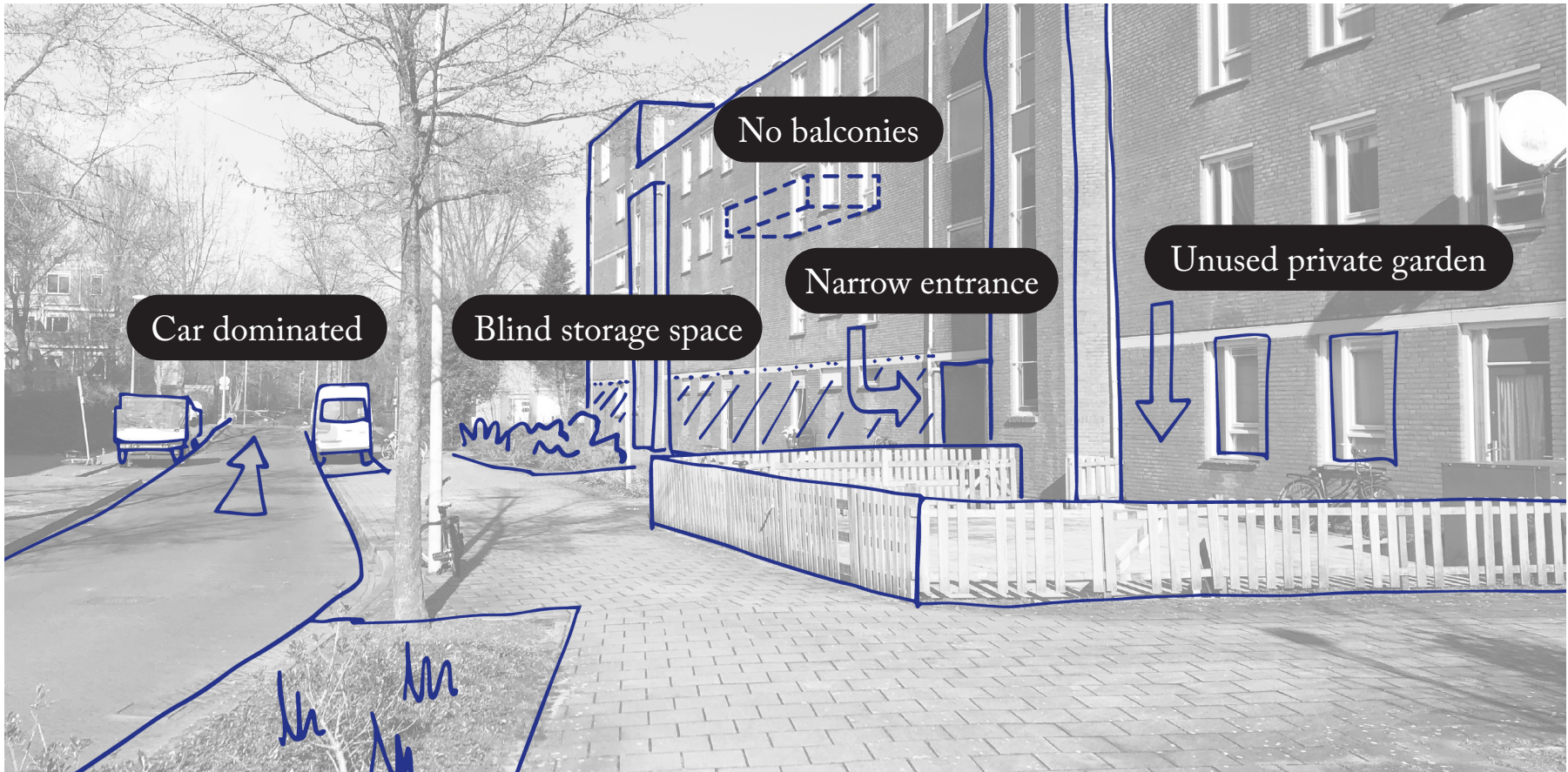


6. No space to interact



Isolated private life

No spaces to facilitate informal interaction among residents



Design

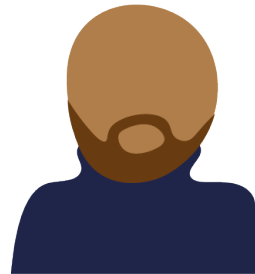
Personas

Jayden
15 | Student



“Together with my friends I like to chill at the Reigersbos centre. It is the only place where we’re not expelled”

Robin
31 | Queer



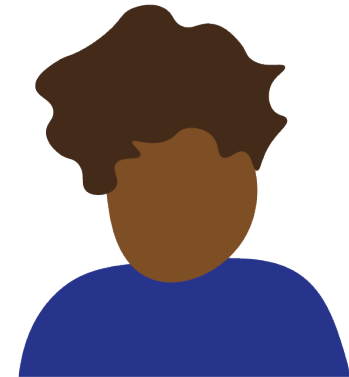
“There is hardly any space in Gaasperdam where I feel safe enough to meet queer people”

Henk
72 | Retired



“I really appreciate the calmness and natural atmosphere of our neighbourhood”

Defano
38 | Father

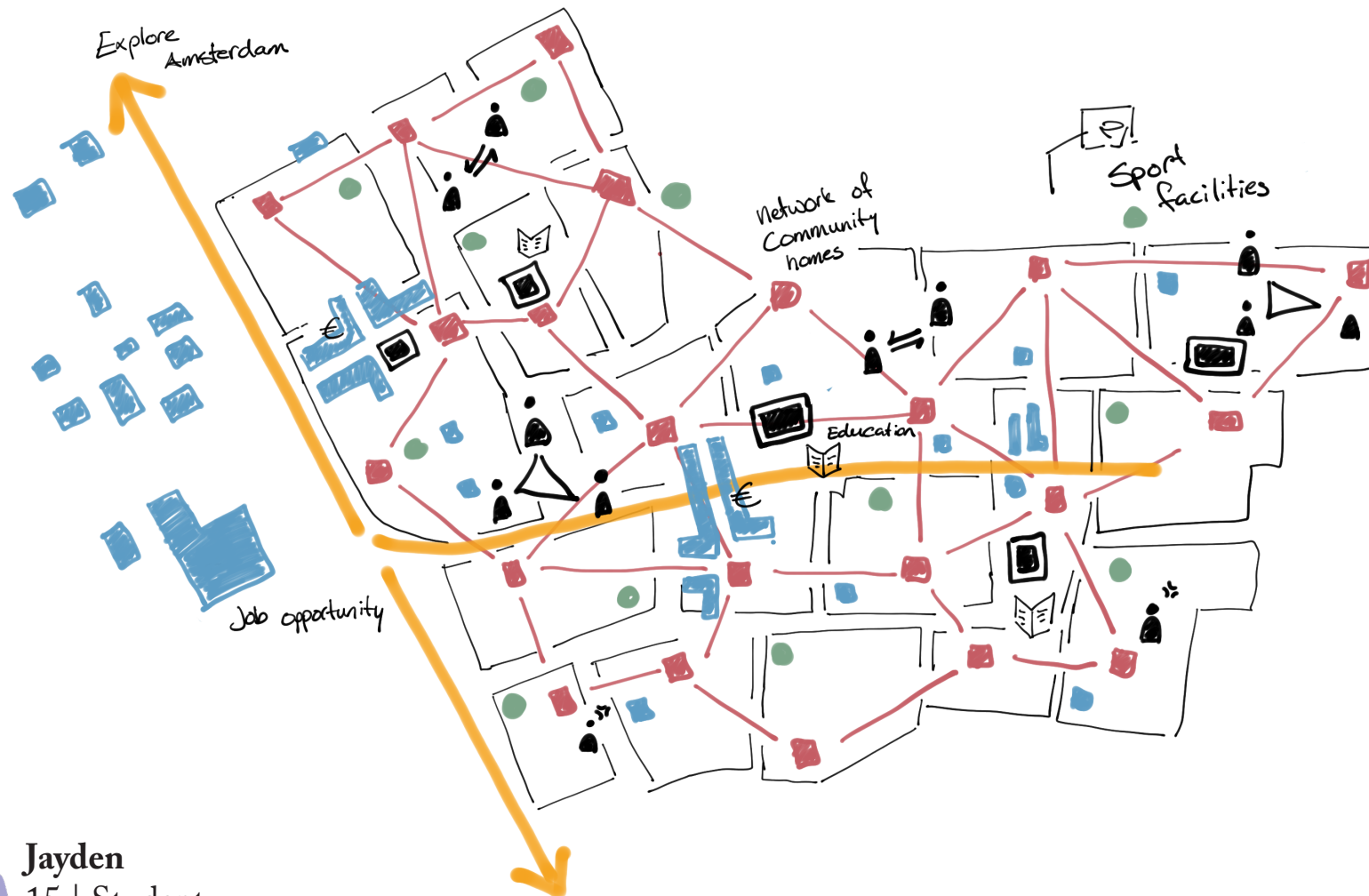


“I love to spend time with my family. But it is not always easy to take care of them when I have to work”

Scenario Jayden

Places to meet his friends and experiment like a teenager should

Safe spaces to focus on his homework

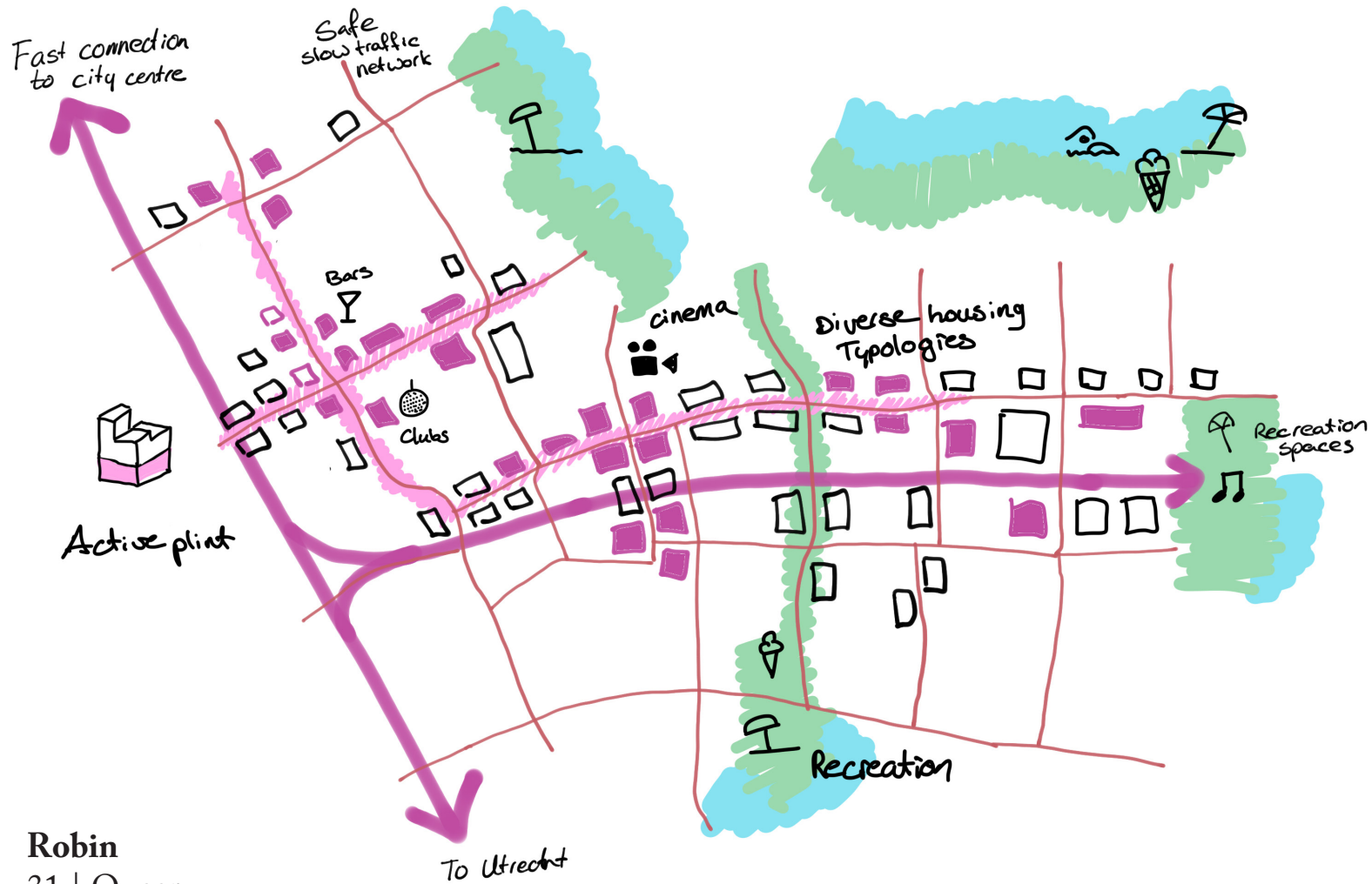


Jayden
15 | Student

Scenario Robin

Dense & mixed-use neighbourhoods

Attractive recreation spaces



Robin
31 | Queer

Scenario Henk

Good health care services nearby

Pleasant bicycle routes through natural landscapes

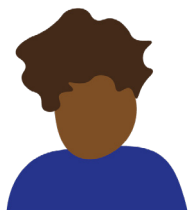


Henk
72 | Retired

Scenario Defano

Safe & attractive spaces to spend time with his family & friends

Work locations close to schools



Defano
38 | Father

Design //

Legitimacy

These valuable spaces are hardly there

Spatial exclusion of specific masculinities

“Public visibility legitimises an identity”

(FOMU Antwerp, 2022)

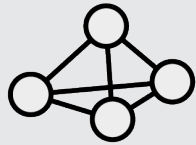
Spaces of Common Interest

Increase visibility by facilitating interactions among masculinities

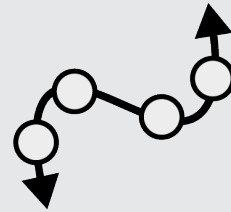
Common interests foster interactions with people you are unfamiliar with



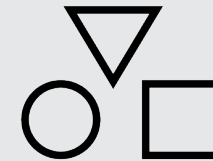
Vision elements



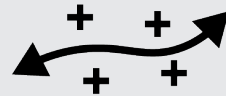
1. Part of a network



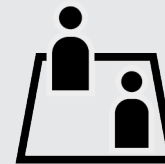
2. Connected to neighbouring areas



3. Diverse neighbourhood types



4. Coherent development axis



5. Spaces for interaction

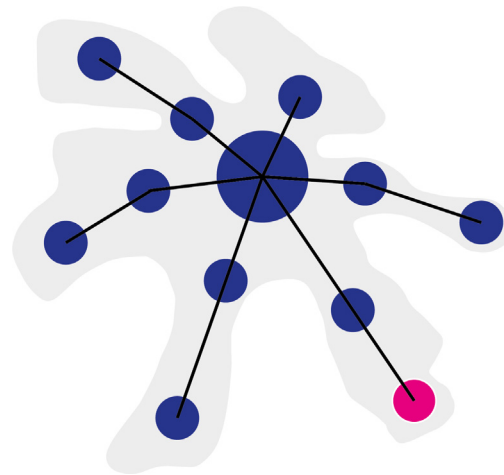
1. Part of a network



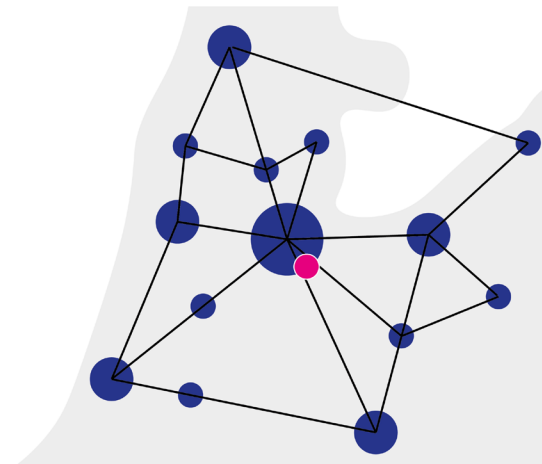
Gaasperdam is no longer dependent on the Amsterdam city centre

Make use of the central location in the metropolitan region

Suitable to densify and facilitate an interesting programmatic mix

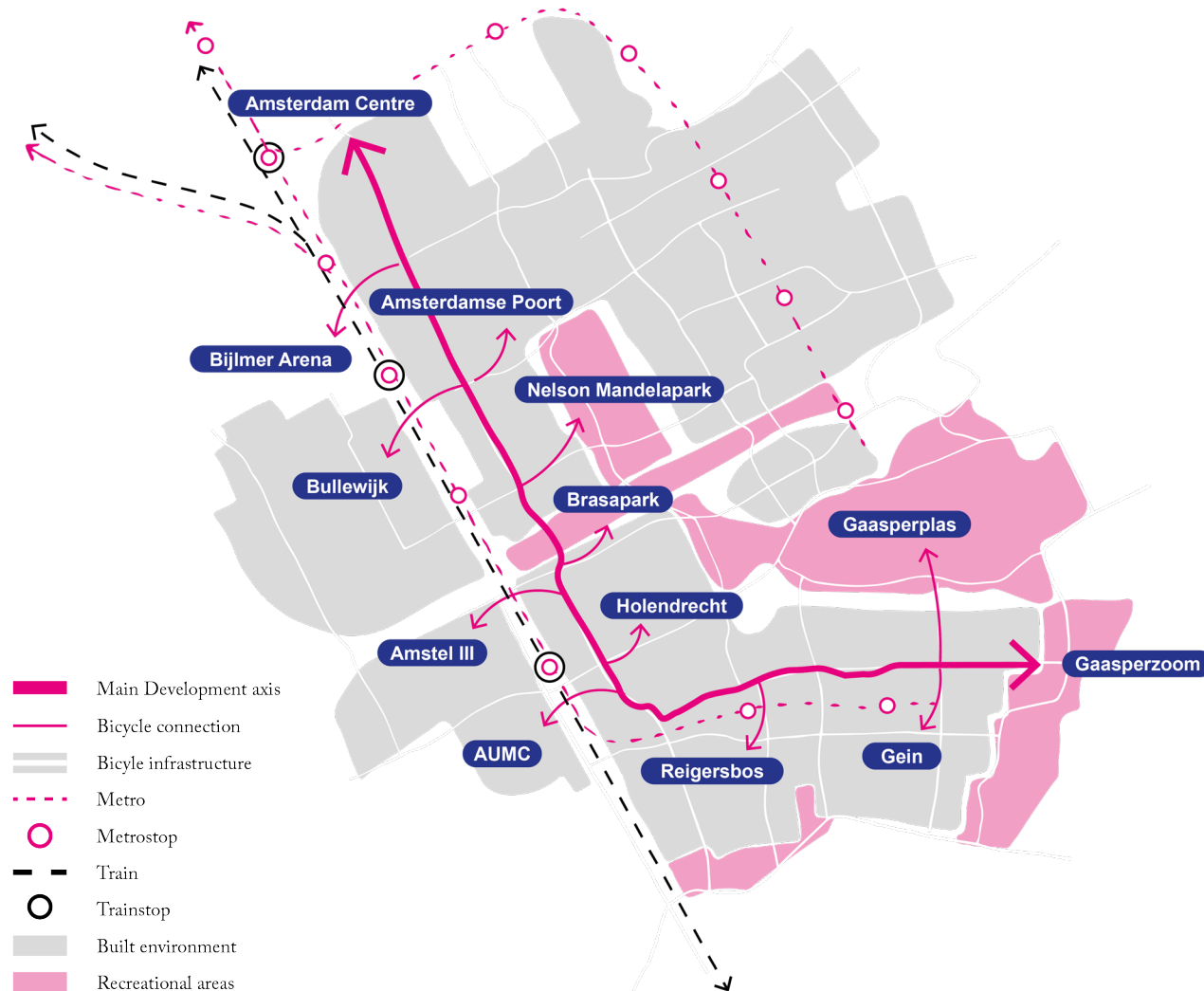


City of Amsterdam



Metropolitan region of Amsterdam

2. Connected to neighbouring areas



Gaasperdam becomes more attractive for diverse masculinities

Upgraded bicycle network which connect to important locations nearby

Increases accessibility to multiple economic, recreation & cultural needs

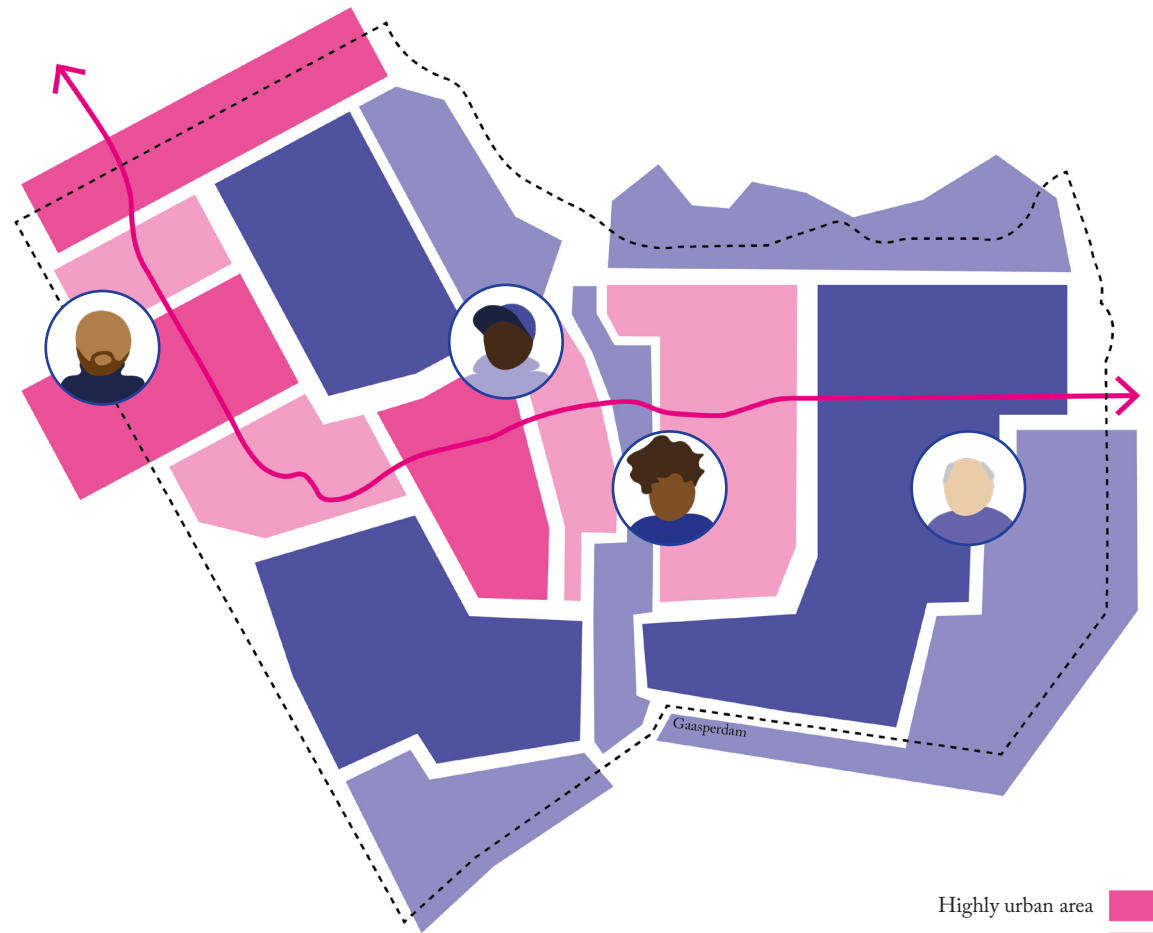
3. Diverse neighbourhood types



Diversity of spaces is essential

Interesting & diverse programmatic mix

Different neighbourhoods allow multiple masculinities to feel at home



- Highly urban area
- Collective environment
- Residential space
- Natural landscape

4. Coherent development axis



Multiple local interventions

Mainly centred along the most interesting bicycle path



5. Spaces for interaction



Diverse programme for diverse masculinities

Shared space to foster interactions among

A good balance between individual and collective programme

Henk
72 | Retired

Robin
31 | Queer

Jayden
15 | Student

Defano
38 | Father



Local Interventions

Case study locations

Station area Holendrecht



Economic and cultural hotspot of Gaasperdam

Collective Environment Reigersbos



Multifunctional residential area

Landscape Park Gein



Attractive nature inclusive environment

Local Interventions //

Station area Holendrecht



Station area Holendrecht

New homes for new residents

Nearby work locations accessible by bike

Cultural centre which is welcoming to all



Station area Holendrecht

Sufficient lighting to feel more safe



Central cultural hotspot to experiment

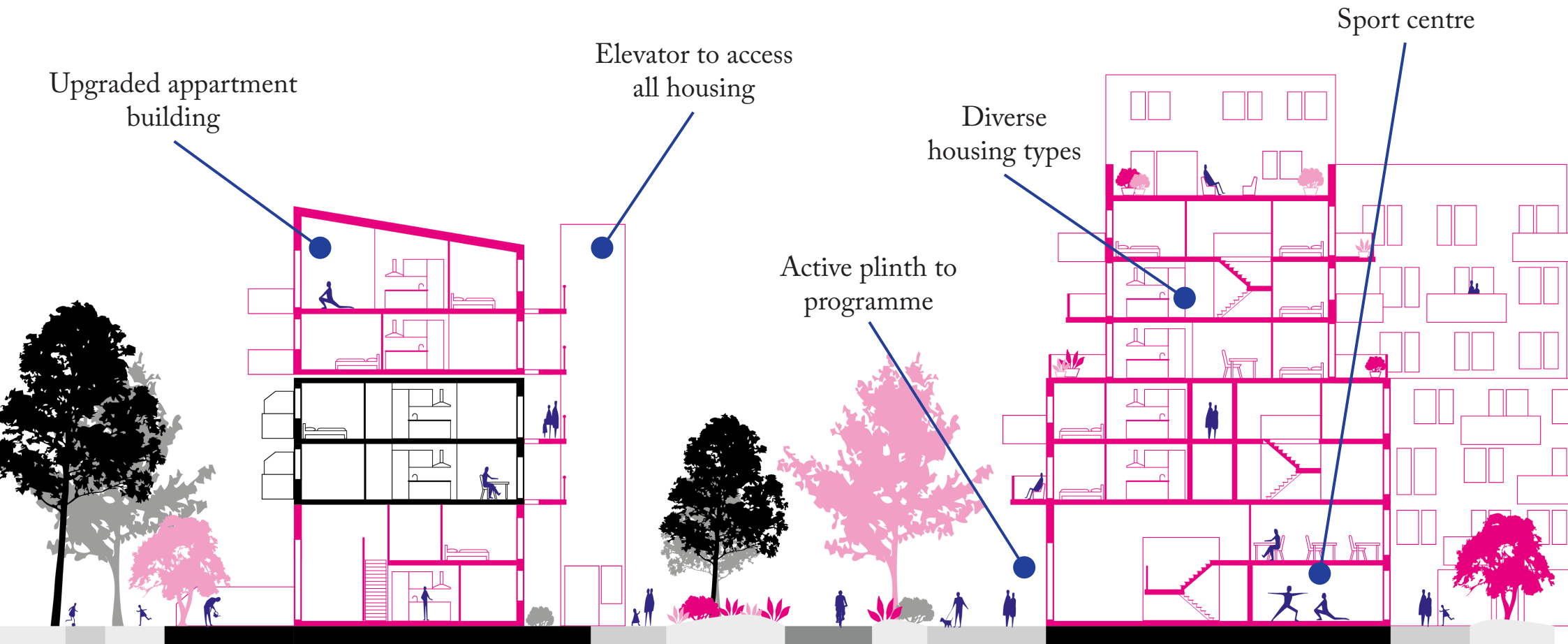
Street furniture which facilitates urban sports as well

Local Interventions //

Station area Holendrecht



Station area Holendrecht



Local Interventions //

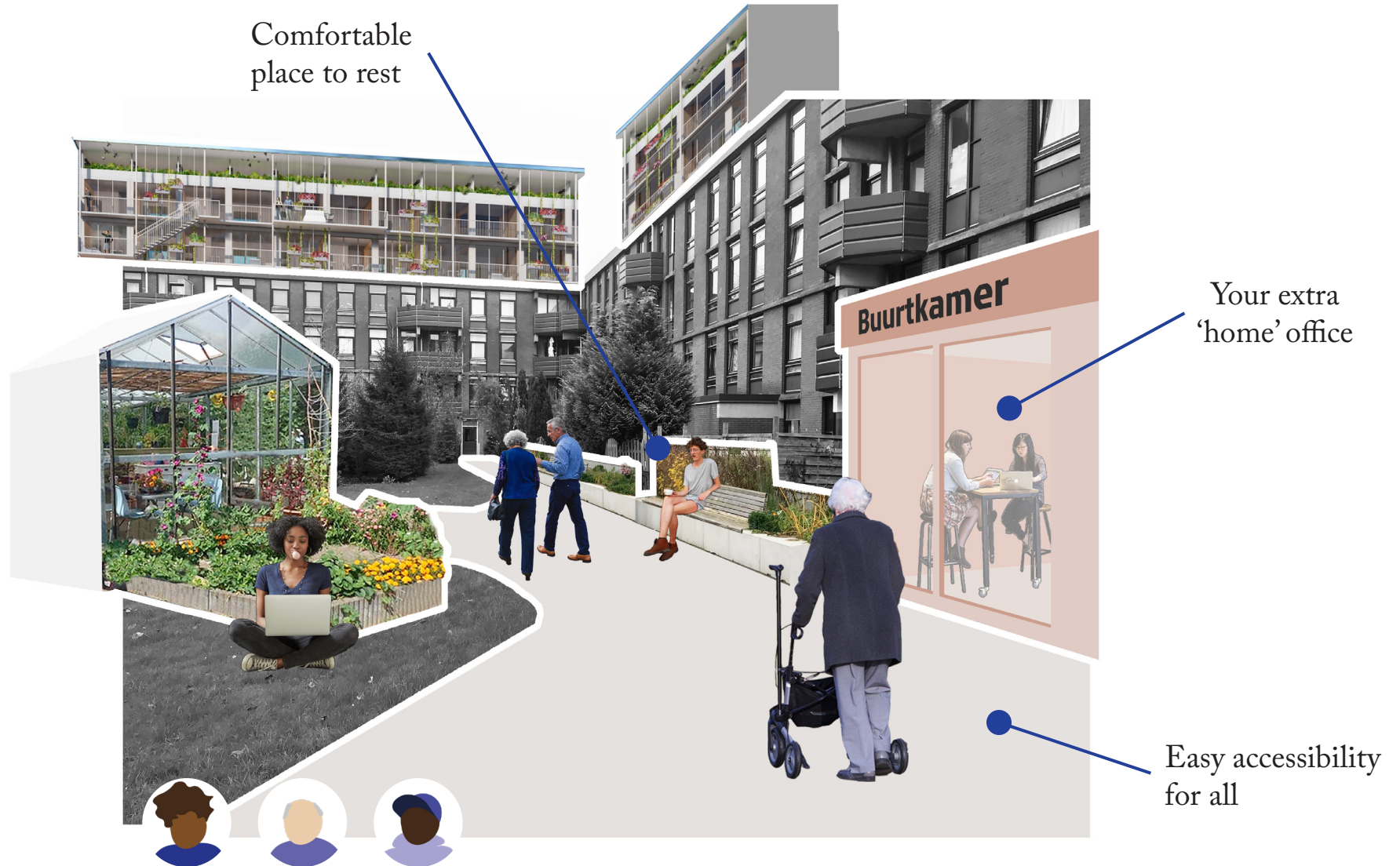
Collective Environment Reigersbos



Collective Environment Reigersbos



Collective Environment Reigersbos

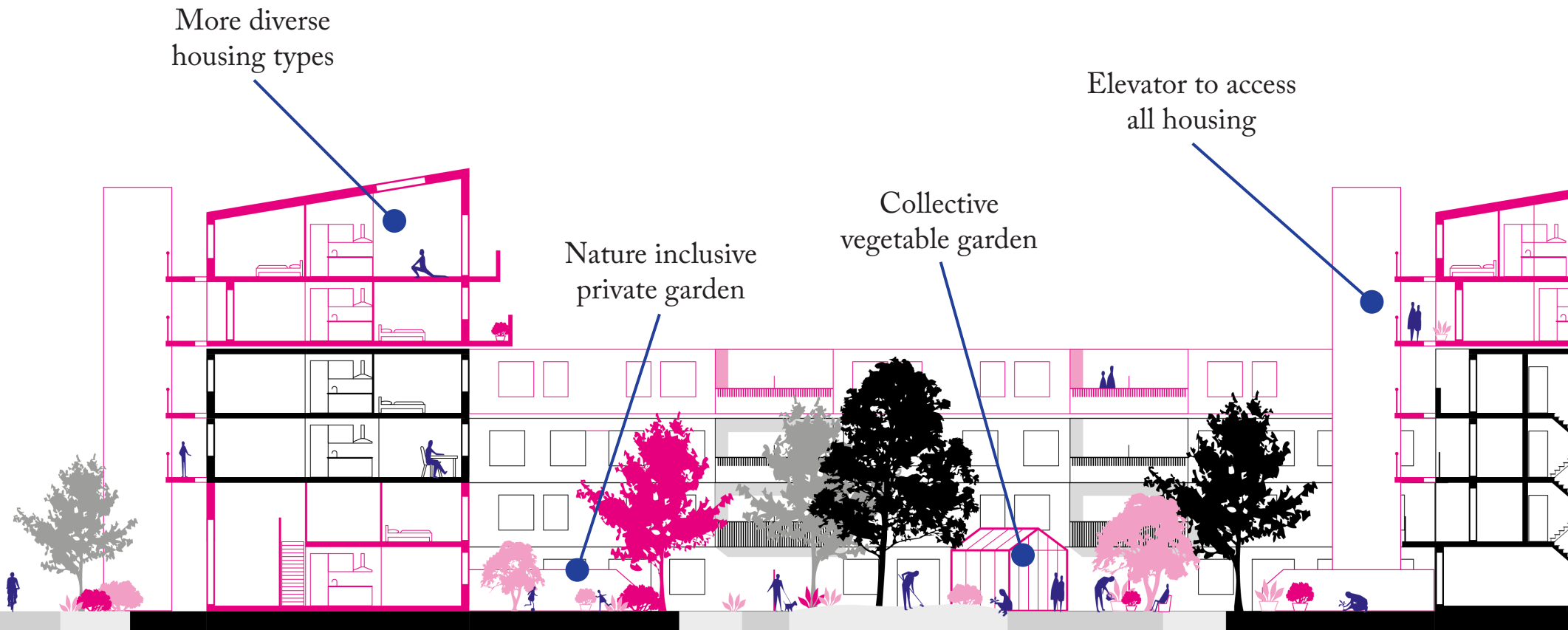


Local Interventions //

Collective Environment Reigersbos



Collective Environment Reigersbos



More diverse housing types

Nature inclusive private garden

Collective vegetable garden

Elevator to access all housing

Local Interventions //

Landscape park Gein



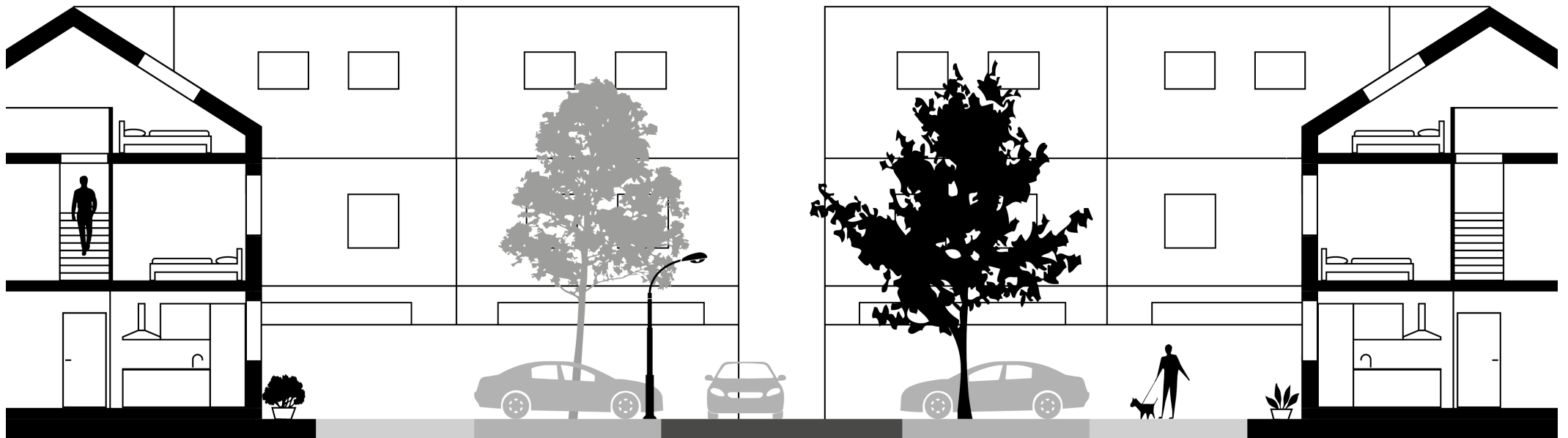
Landscape park Gein



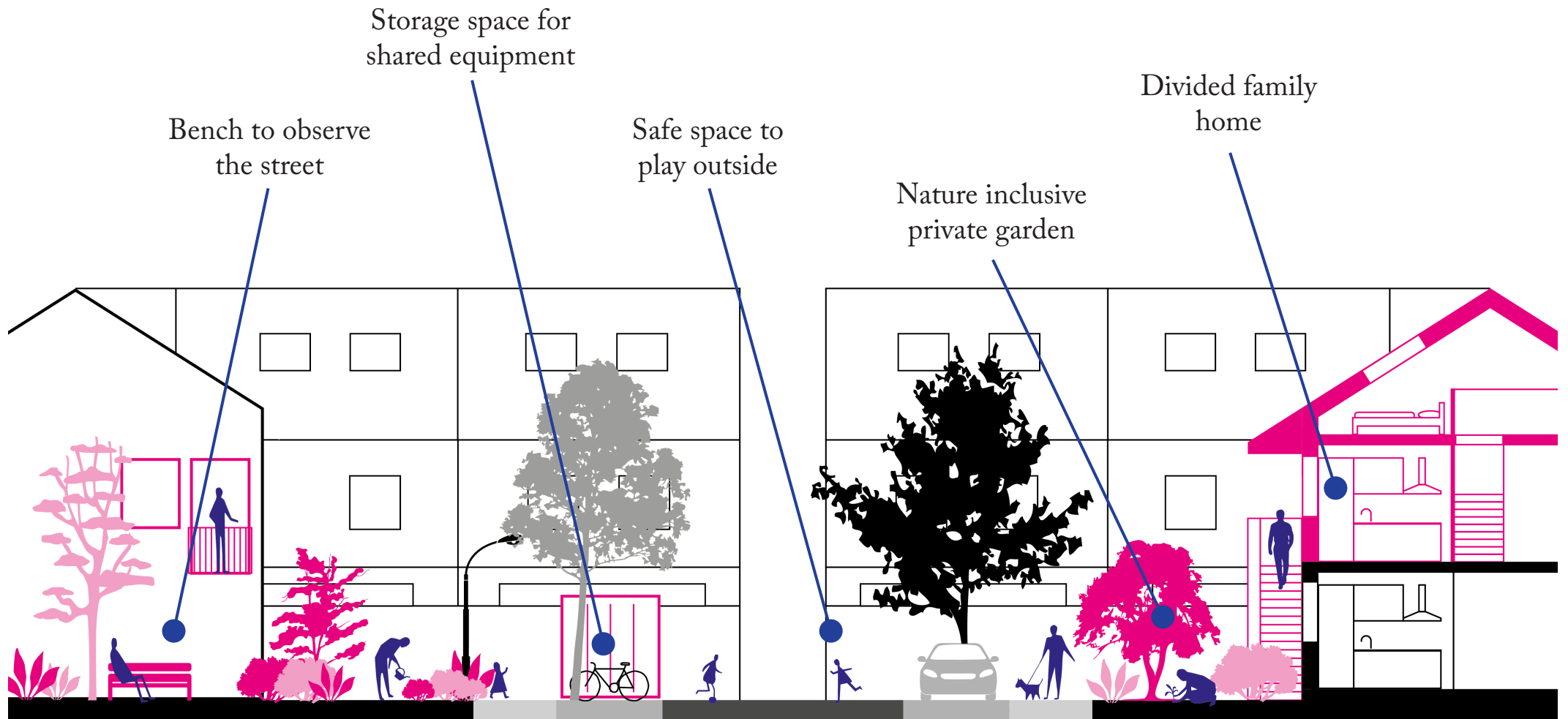
Landscape park Gein



Landscape park Gein



Landscape park Gein



Conclusion

Design Principles

1. Create different spaces to attract different people
2. Design spaces which can facilitate multiple needs
3. Facilitate interactions from the perspective of common interests
4. Integrate local interventions in a strategic framework and vice versa
5. Be explicit and detailed about the people you design for

Discussion

One important remark has to be made that **conflicts and unfamiliar situations will occur between masculinities.** However, these situations are logic and necessary. Responsible actors should start facilitating a diverse range of gender identities instead of continuing to facilitate the dominant hegemonic masculine & heterosexual gender identity only. The current built environment has to change to **facilitate marginalised gender identities.**

Furthermore, to achieve this, one should understand that this challenges cannot be solely solved by spatial designs of our profession. Multiple **stakeholders from diverse disciplines have to contribute** to create just and inclusive cities which are welcoming all masculinities and diverse gender identities.

Thank you!