



**P5's Presentation**

15 June 2010

# REGENERATION SAIGON'S PORT

*Renewal an outdated port area to strengthen waterfront redevelopment of the water city*

*Ho Chi Minh City - Vietnam*

# Contents

## 1. INTRODUCTION

Relationship between the city and the port

City profile

## 2. PROBLEM STATEMENT

## 3. RESEARCH QUESTION

## 4. URBAN STRATEGY & STRATEGIC PROJECT

Improve connections

Improve the accesses to the river

Develop an attractive waterfront

Avoid floods

Implementation phases

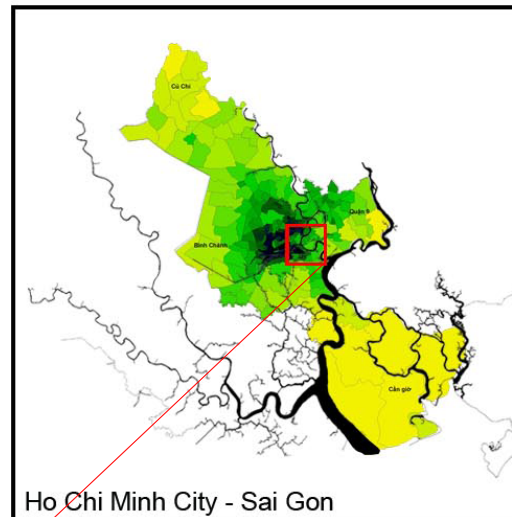
## 5. EVALUATION

Comparing waterfront development projects

Spatial environment

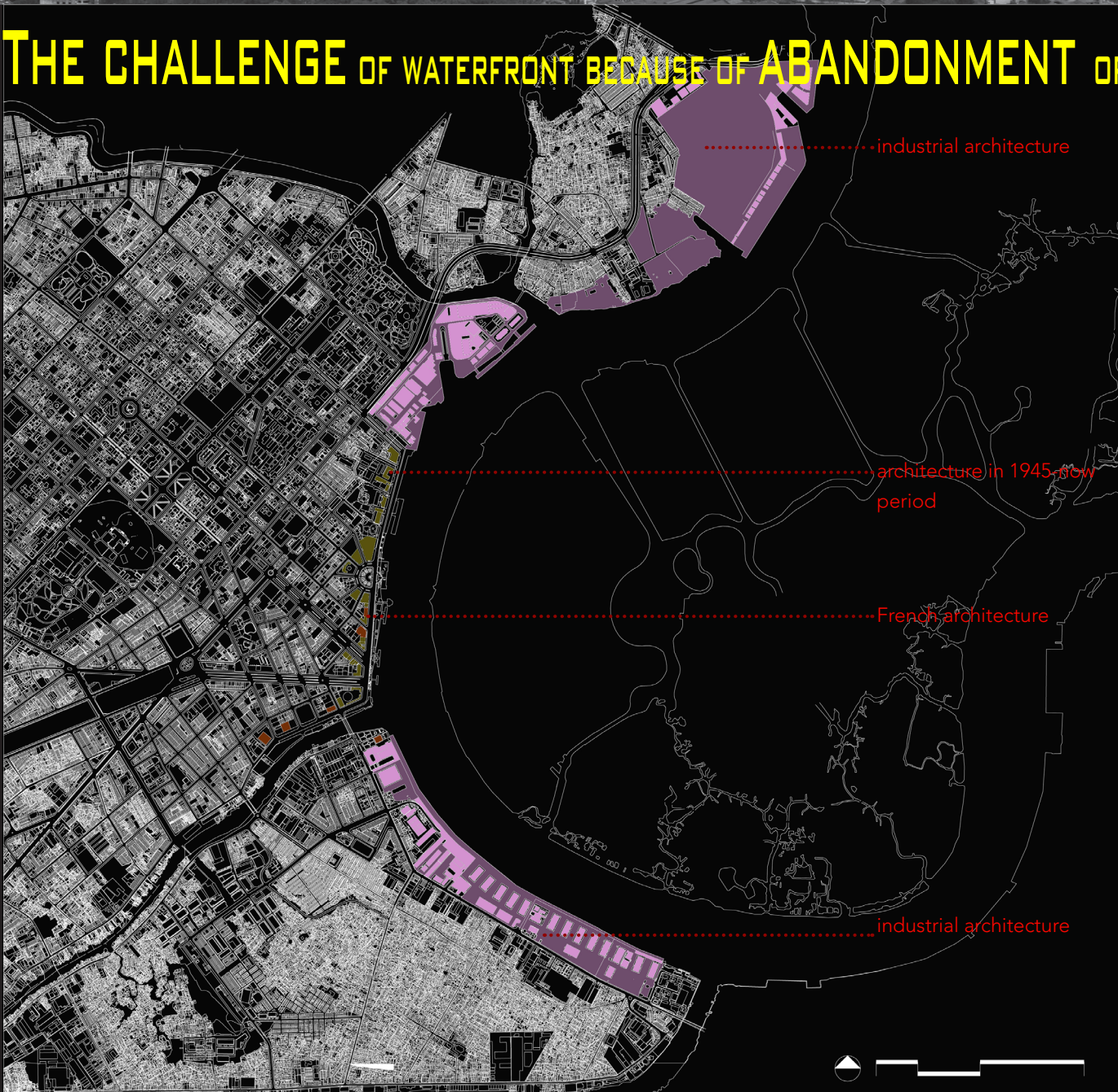
## 6. CONCLUSION

## VIETNAM, HO CHI MINH CITY, SAIGON RIVER





# THE CHALLENGE OF WATERFRONT BECAUSE OF ABANDONMENT OF THE OLD PORT IN INNER CITY



VACANT OLD PORT AREAS PROVIDE **OPPORTUNITIES** OF WATERFRONT REDEVELOPMENT

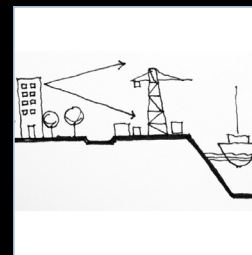
THE TRANSFORMATION WATERFRONT IS A UNIQUE **OPPORTUNITY** FOR CITIES TO RECONNECT WITH ITS WATER'S EDGE

# Problem statement

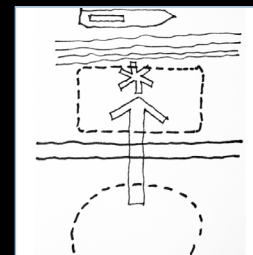
# REGENERATION SAIGON'S PORT



**TON DUC THANG HIGHWAY  
CUT OFF THE CONNECTION BETWEEN THE CITY AND THE RIVER**



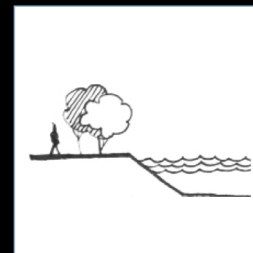
INDUSTRIAL BARRIER



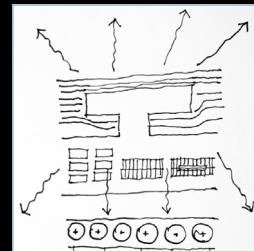
POOR CONNECTION TO WATERFRONT



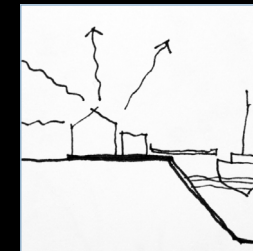
LOW VIEWS TO RIVER



LESS AN ATTRACTIVE WATERFRONT



LACK ACCESSED POINTS TO RIVER



POOR LIVING ENVIRONMENT



# REGENERATION SAIGON'S PORT



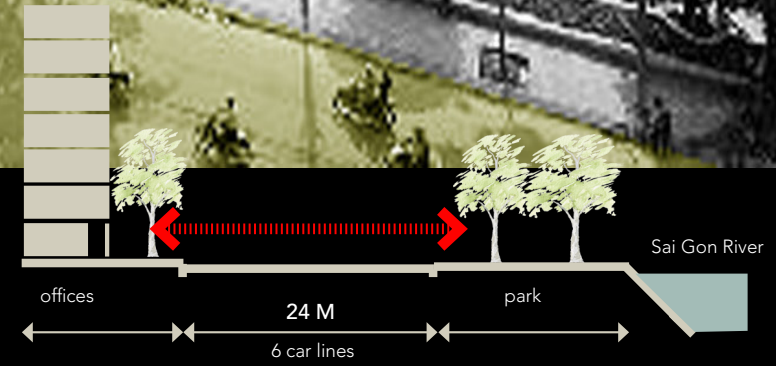
PORT LOCATED IN INNER THE CITY AND FLOW OF GOODS PASSES THROUGH THE CITY ADDRESSING **PRESSURE** ON INFRASTRUCTURE



# REGENERATION SAIGON'S PORT



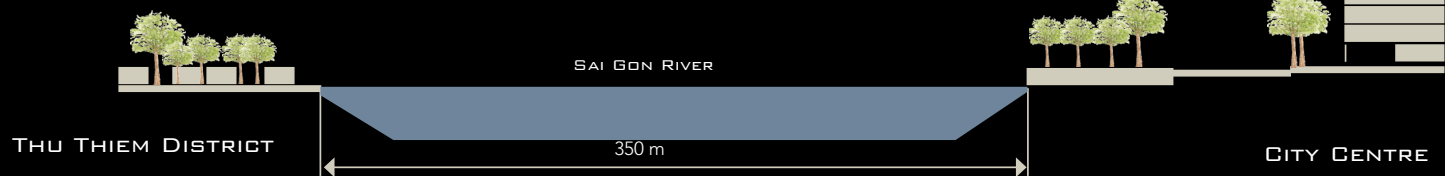
EXISTING POINTS TO ACCESS THE RIVER ARE OFTEN **ALMOST IMPOSSIBLE TO FIND** BECAUSE THE RIVERBANK IS BLOCKED BY PORT AND HIGHWAY



# REGENERATION SAIGON'S PORT



**MISSING CONNECTIVITY** OF TWO SIDES OF THE RIVER CAUSES **UNBALANCE OF URBAN DEVELOPMENT** BETWEEN WEST AND EAST OF RIVERBANK





**THE CITY SUFFERS MANY SERIOUS FLOODS**



THE RAPID URBANIZATION AND MODERNIZATION IN HO CHI MINH CITY HAS RESULT IN **LOSING ITS OWN IDENTITY** AND CHARACTERISTIC IMAGE OF THE A CITY WHILE WATER IS A DISTINCTIVE SPIRITUAL THAT CHARACTERIZES THE URBAN STRUCTURE OF CITY FOR A LONG TIME



MANY PEOPLE STILL LIVES **DENSELY** IN SMALL SPACE, **INADEQUATE HOUSING** AND **POOR ENVIRONMENTAL CONDITIONS**



**HIGH DEMAND OF PUBLIC PLACES IN CITY CENTRE**



**...WHILE LESS ATTRACTIVENESS WATERFRONT**

**ALONG THE RIVER AND CANALS**

*The transformation of outdated port area is urgent and necessary, not only developing an attractive waterfront of Sai Gon river but also recovering the city's significant and distinguish after relocation the inner city's port to rural area*

What kind of strategic plan and urban design are needed for regeneration of an old port area to strengthen a livable urban environment along the Sai Gon River in Ho Chi Minh city, Vietnam?





## **SUB-RESEARCH QUESTIONS:**

- 1.** What are characteristics of a port that tend to change a relationship between the city and port?
- 2.** What experiences can be learned from the transformation of waterfront Europe cities to apply the principle for Sai Gon Riverside?
- 3.** What are conceptions and programs of planning Sai Gon riverbank to achieve attractive and lively urban development to create the distinguished water city?
- 4.** How does the new transformation area create the balance and connection between two sides of Sai Gon River? How can the new transformation area improve the access points and orientation towards the River?
- 5.** What plans can solve the flooding effects and water pollution on Sai Gon River?
- 6.** How can the regeneration of an old port enhance the image and unique identity of Ho Chi Minh city?

## STRATEGY TO IMPROVE CONNECTIVITY BETWEEN CITY AND ITS WATERFRONT

Infrastructure linkages

Urban spatial connections

## STRATEGY TO IMPROVE ACCESS POINTS AND ORIENTATION TOWARDS THE RIVER

Enhance main axes from historical city centre with a sense of heritage and history

Crossing the highways to the waterfront

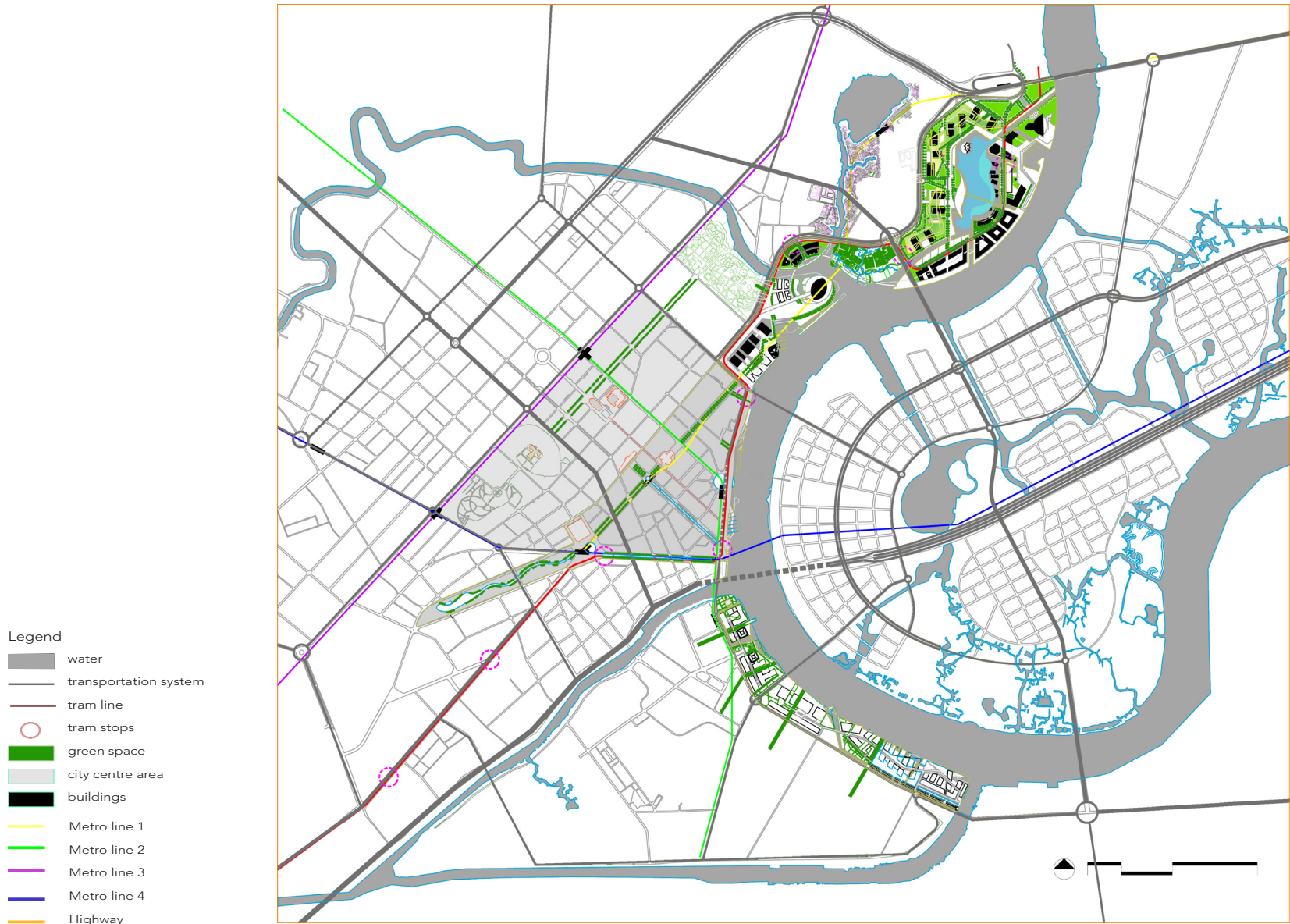
## STRATEGY TO DEVELOP AN ATTRACTIVE WATERFRONT AS A LIVEABLE PLACE FOR LIVING, WORKING AND LEISURE

Developing a new waterfront residential and complex official zone with mix-income urban neighbourhood

Redeveloping waterfront residential with already built-up block in low-income urban neighbourhood

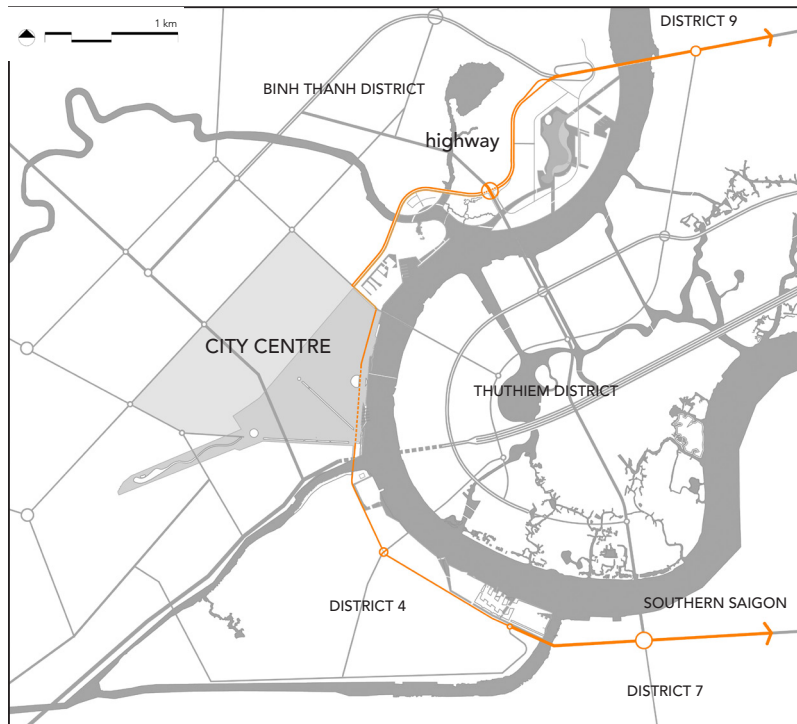
## STRATEGY TO AVOID FLOODS

## STRATEGY TO IMPROVE CONNECTIONS BETWEEN CITY AND ITS WATERFRONT

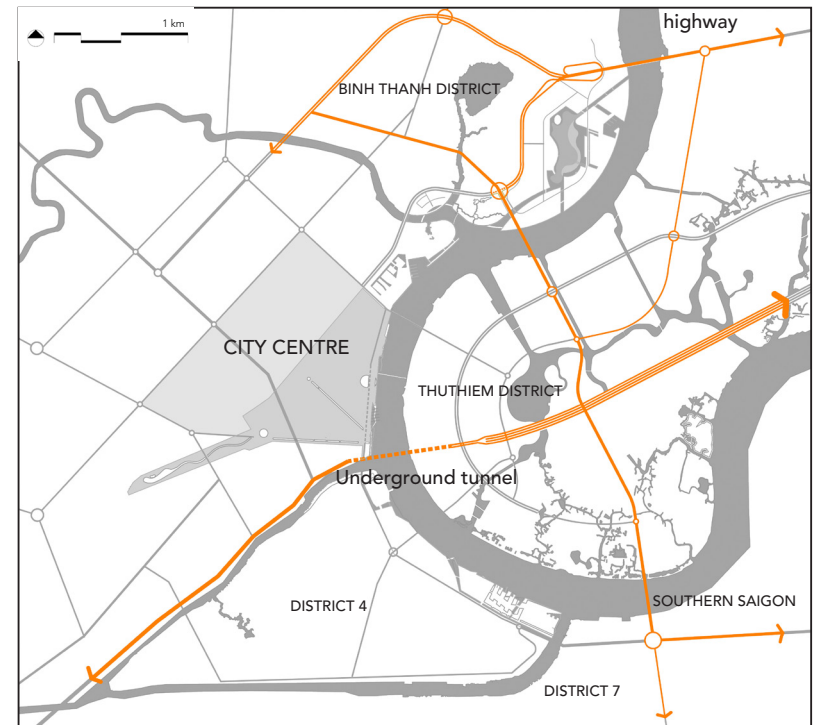


## DESIGN AN ALTERNATIVE HIGHWAY TO LINK CITY CENTRE TO OTHER DISTRICTS

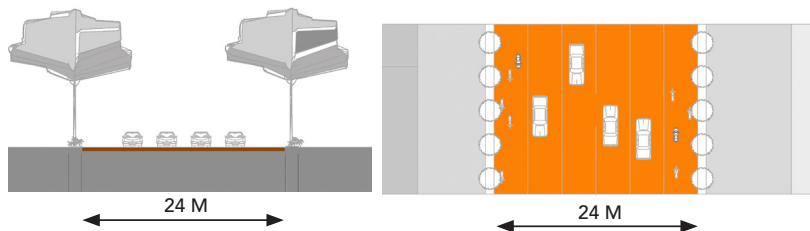
Before



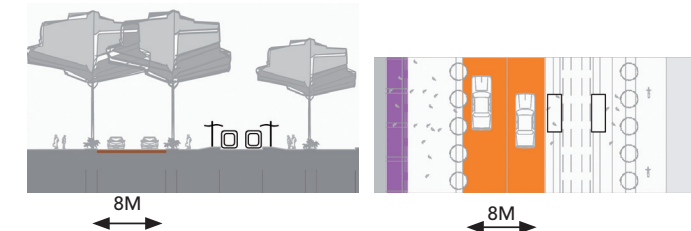
After: Alternative main highways in inner city



Existing Ton Duc Thang highway - 6 lines



Reducing traffic on Ton Duc Thang highway into 2 lines

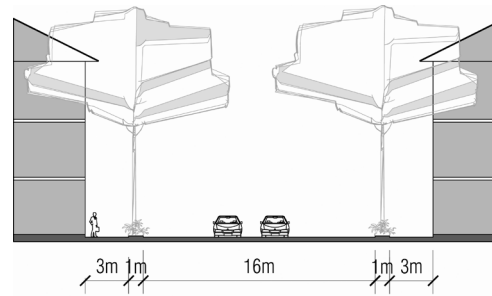


## CYCLING AND WALKING SYSTEMS

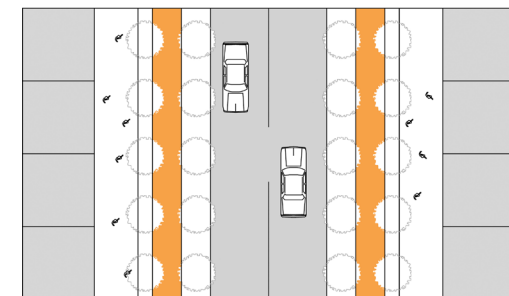
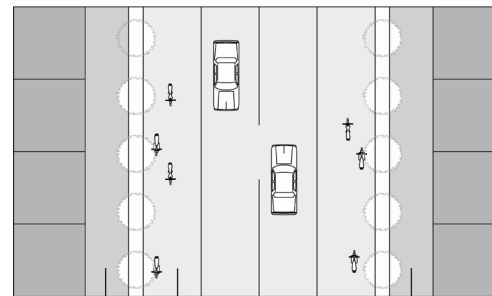
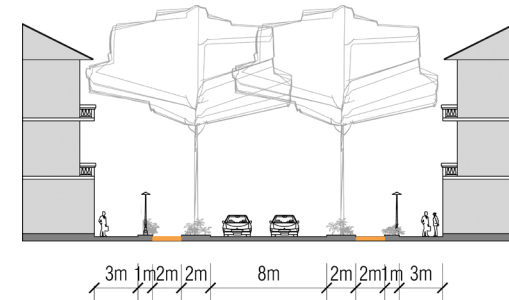


### Cross section of Ton Duc thang street in Southern part

Before



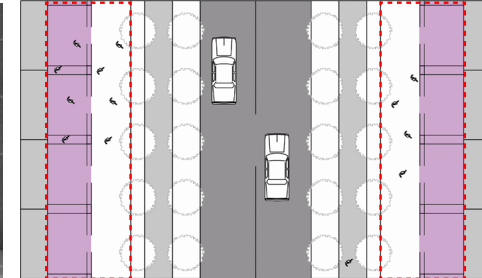
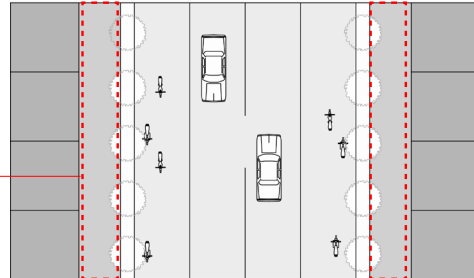
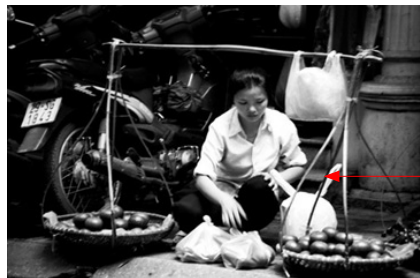
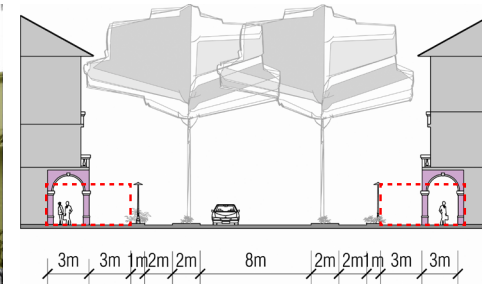
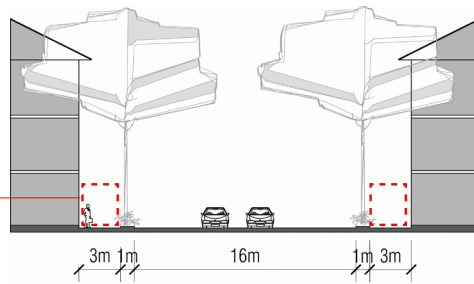
After: spaces for bikes and pedestrians



low quality path for pedestrian  
 unsafe for cyclists because of heavy traffic on highway  
 low quality path for pedestrian

Streets with separated cycle and pedestrian paths give safe and comfortable space to users.

## REDISCOVER A SUSTAINABLE WAY FOR LOCAL BUSINESS AS WELL AS LOCAL COMMUNICATION



Local business on street

**BEFORE**

**BEFORE**

**REFERENCES**

More space for local business  
**AFTER**

## HISTORY: CANALS AND BUSINESS ACTIVITIES

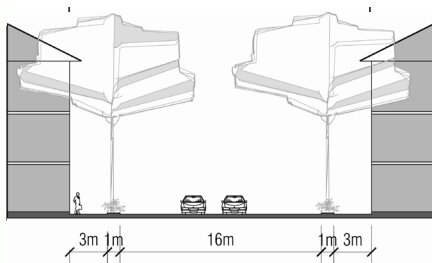


## NOW: CANALS AND UNATTRACTIVE USES

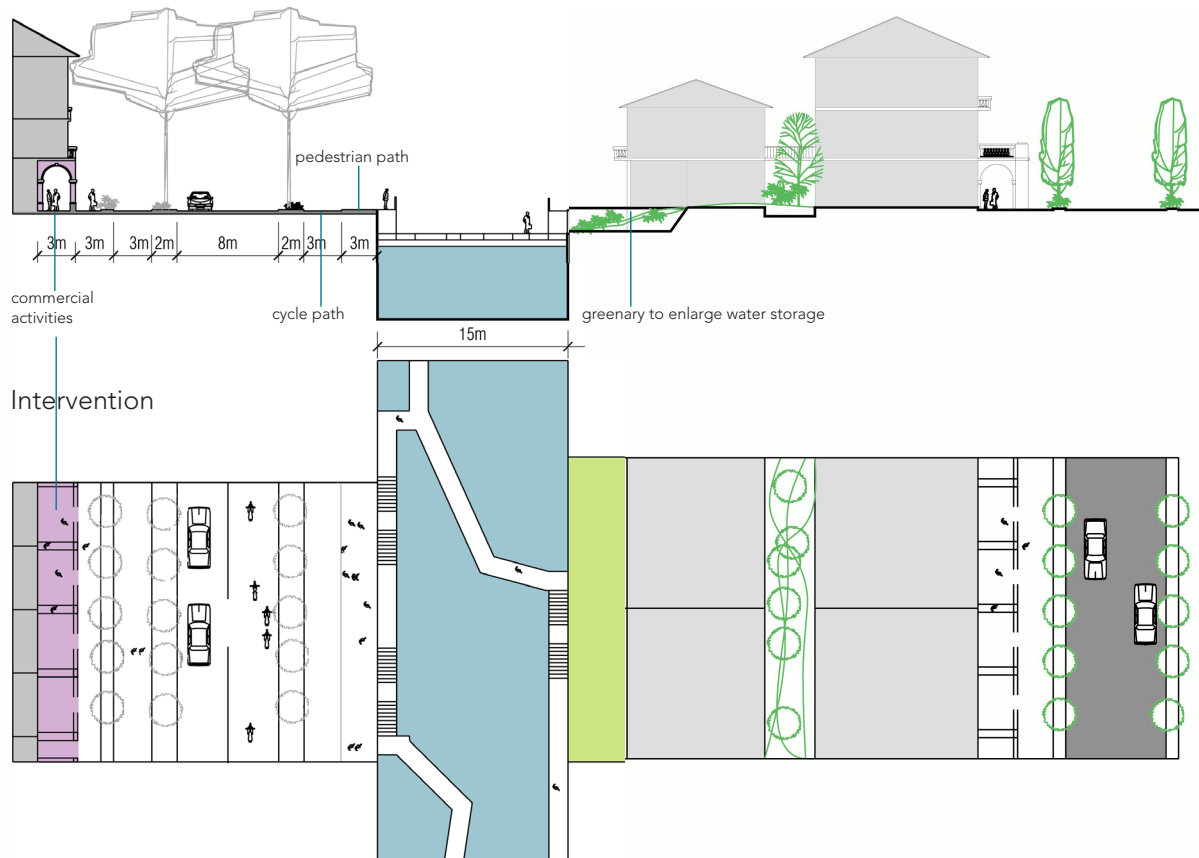
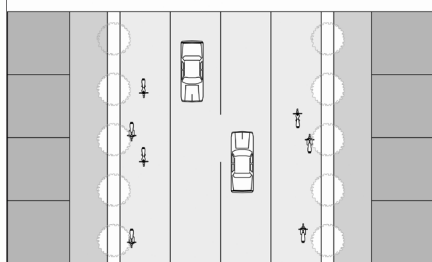


## RECREATE THE RELATION BETWEEN CANALS AND PEDESTRIAN PATHS

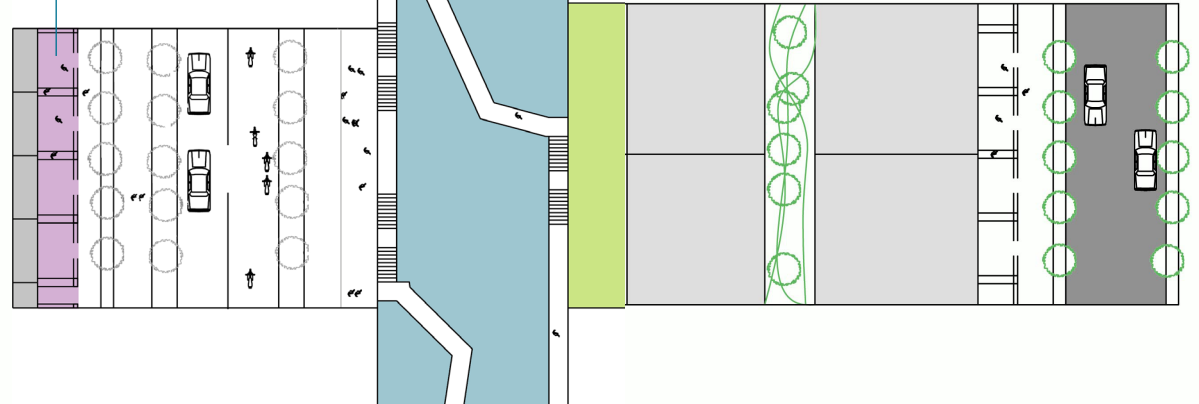
**Future: new canals connected with pedestrians and activities:** to establish landscape and pedestrian walkways along canals and waterways to improve the walkability and access to waterfront.



Existing



Intervention

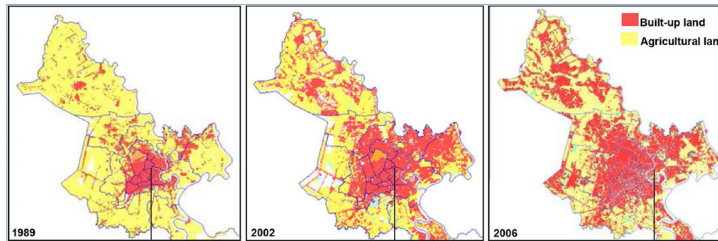




## URBAN SPATIAL CONNECTIONS

(1) REGAIN THE SOFT EDGE BY INCREASING THE GREENERY OF THE URBAN WATERFRONT IN ORDER TO CREATE AN ECOLOGICAL ZONE IN INNER CITY

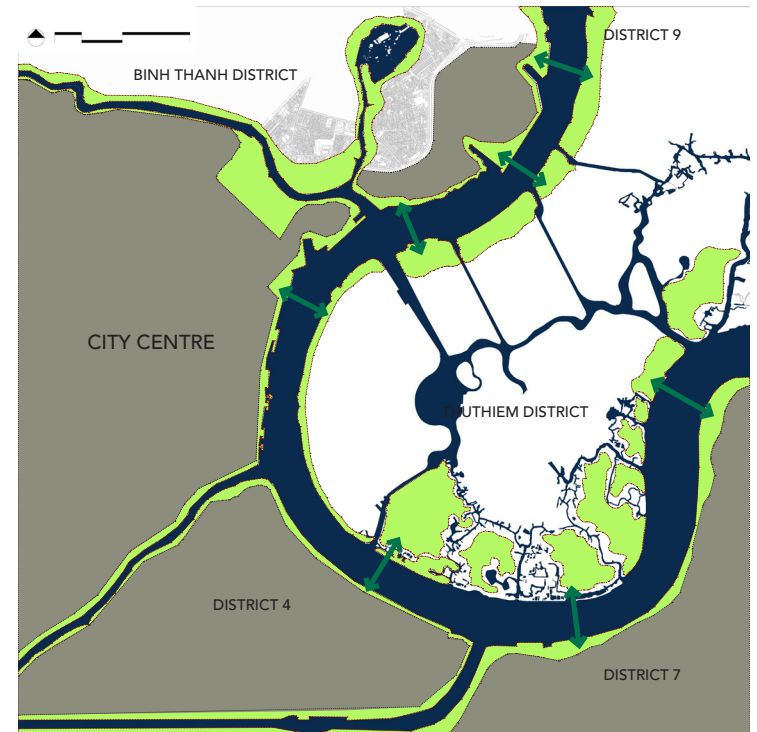
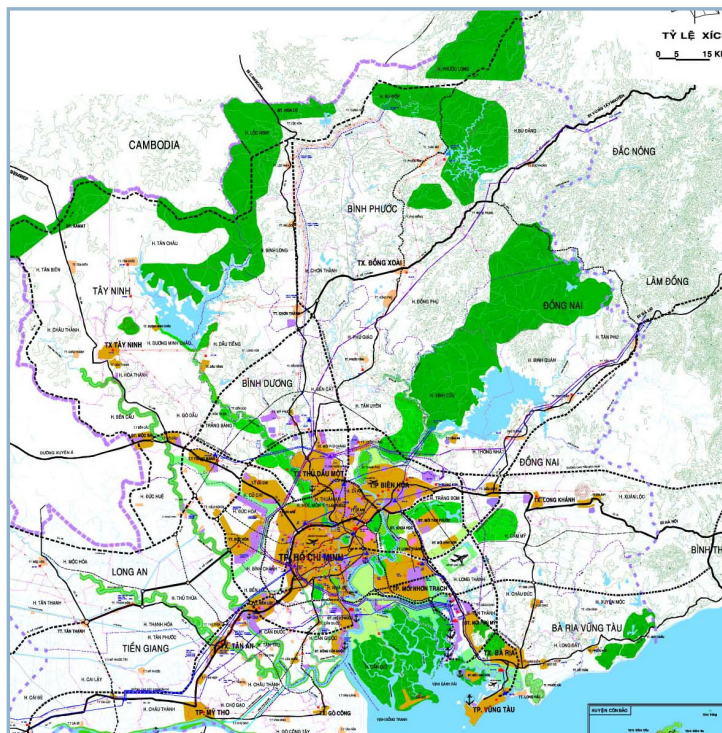
### Demand



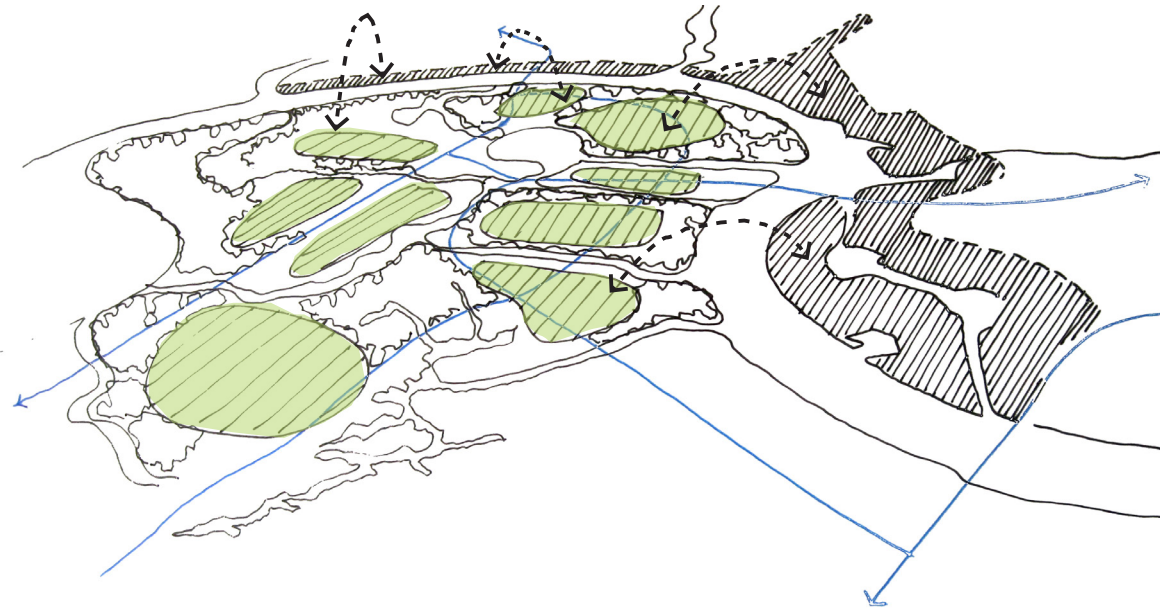
Urban land cover change in the central and northern part of HCMC (Tran & Ha, 2007)

Lack of ecological considerations

### Legend

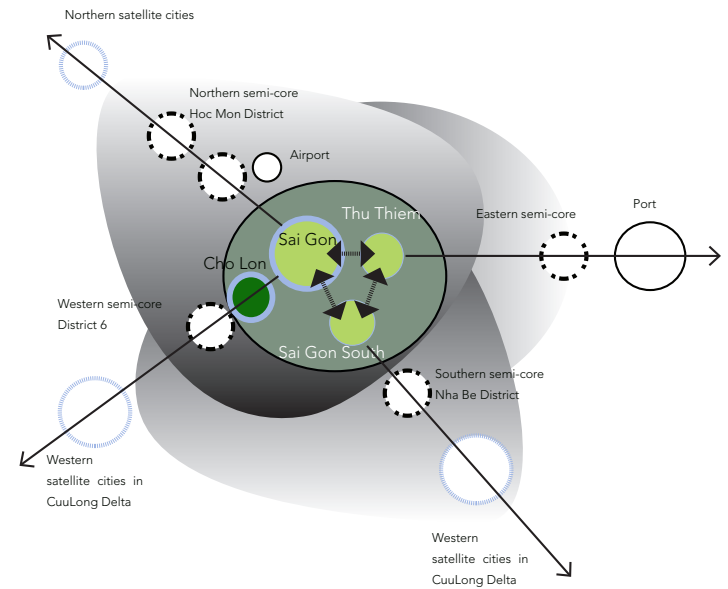


IDEA TO DEVELOP THU THIEM DISTRICT AS A RURAL AREA



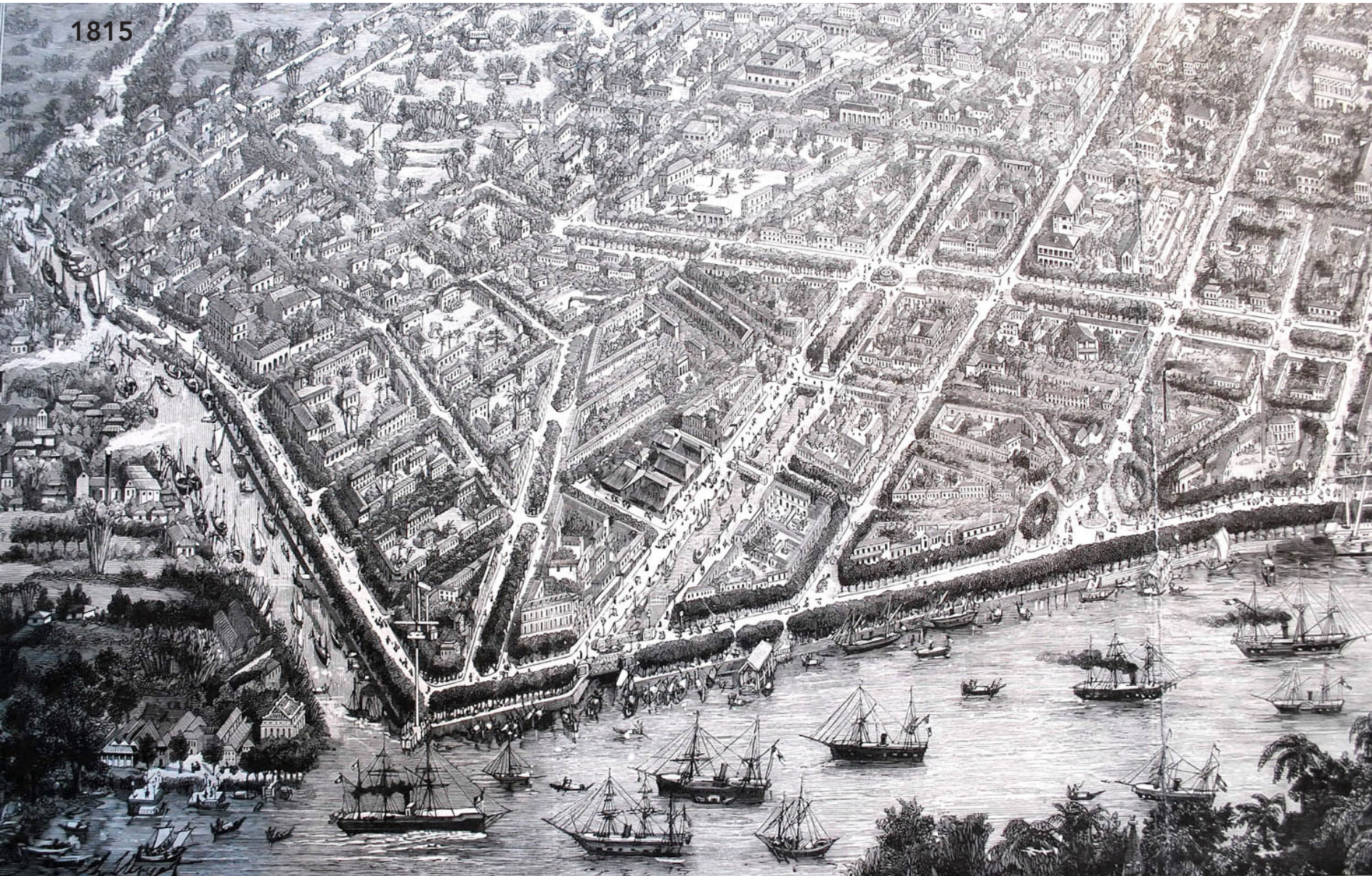
RELATION OF THE CITY CENTRE TO SATELLITE CITIES

Conceptual location of semi-core and satellite cities to reduce pressure of urban expansion in the city

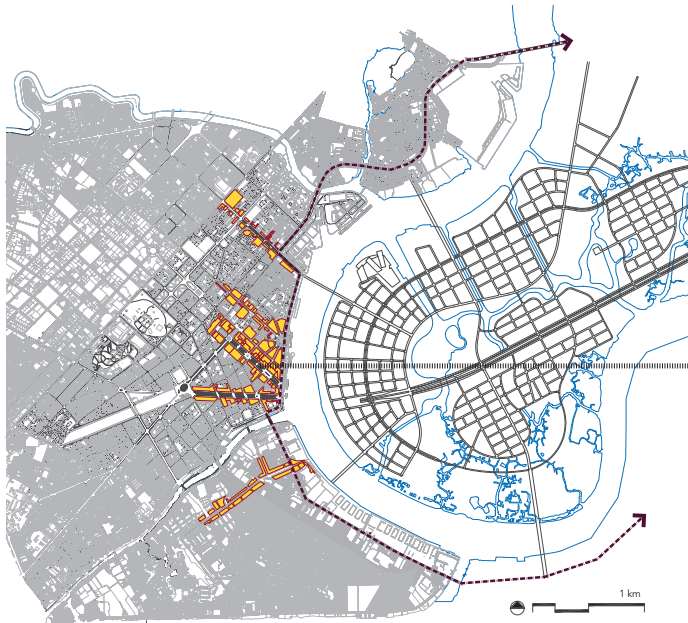


REMAKING MAIN HISTORIC AXIS TOWARD THE RIVER

1815

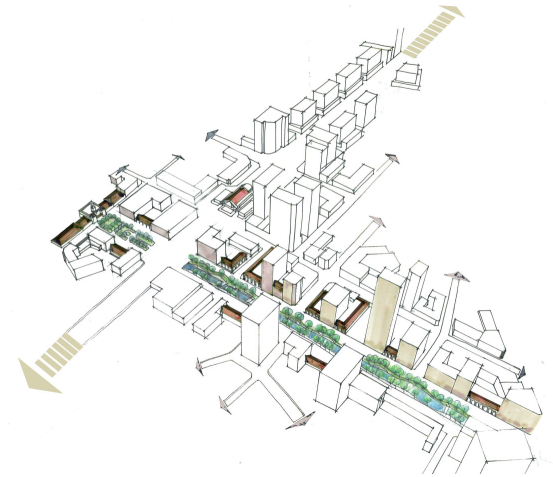


## REMINDED THE FORMER WATER IMAGES AND CULTURAL LANDSCAPE

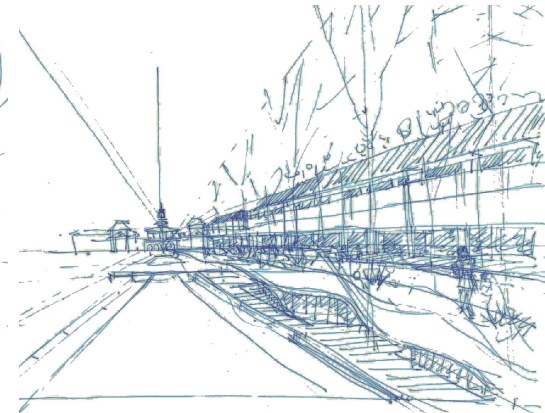
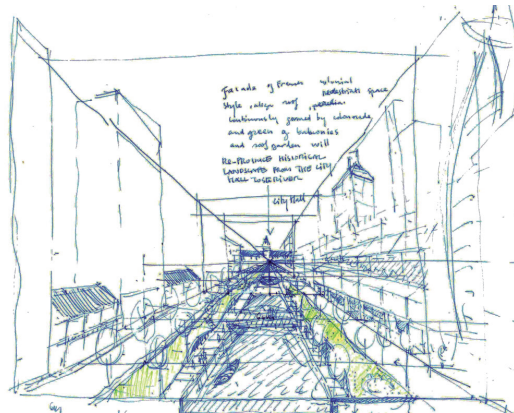


The main axis as "windows towards the river"

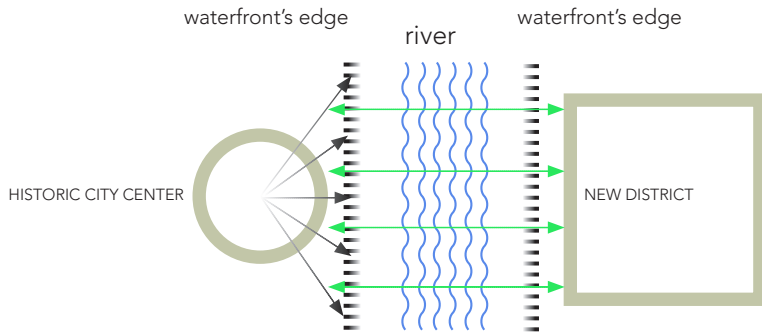
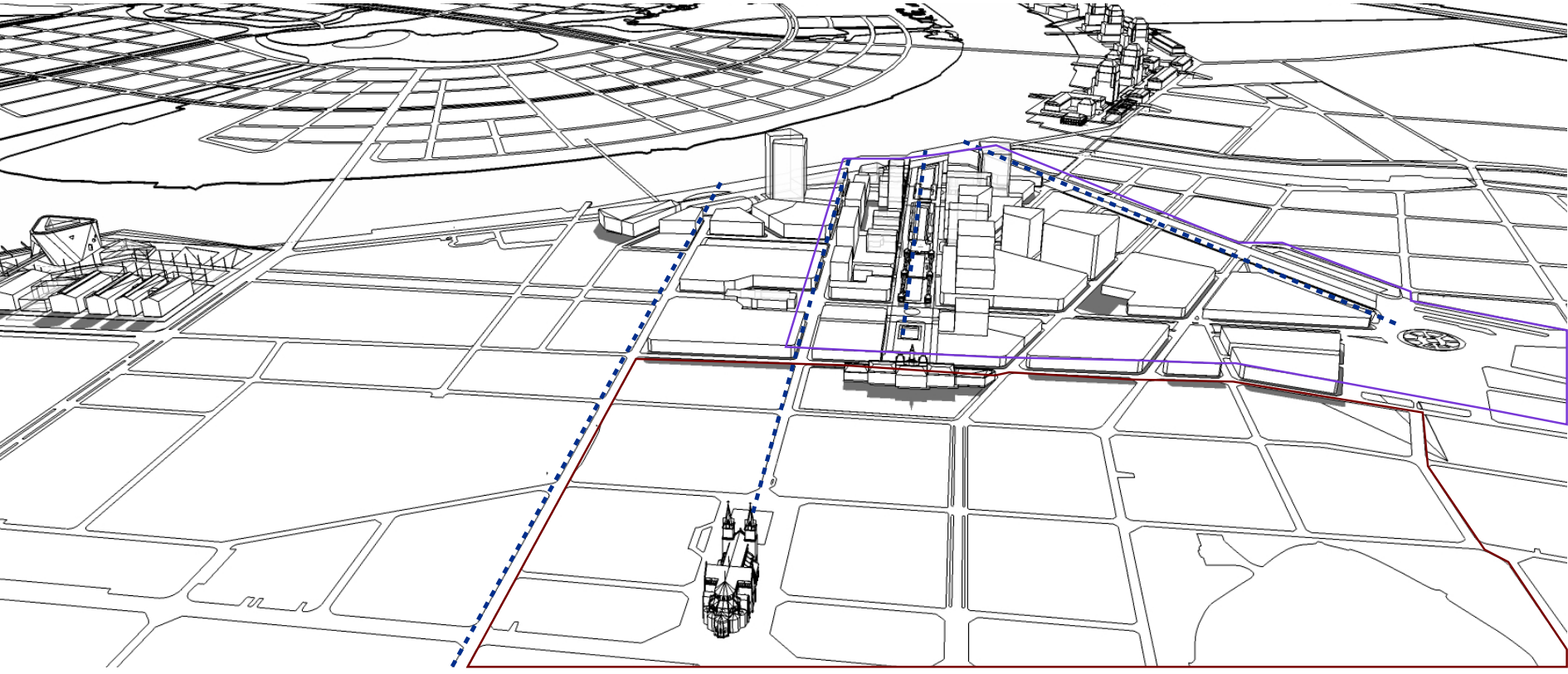
Regain historic value by transformation the main axis toward the river



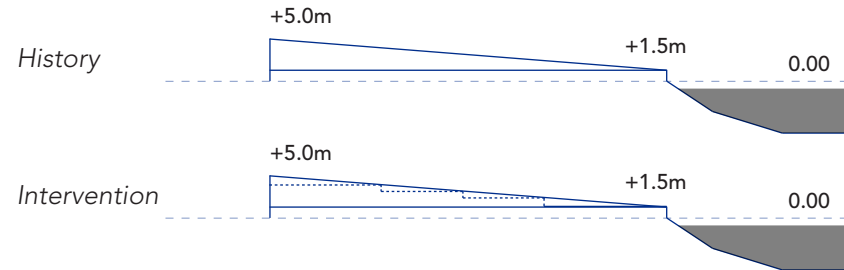
Ideas to rediscover the canal in city centre



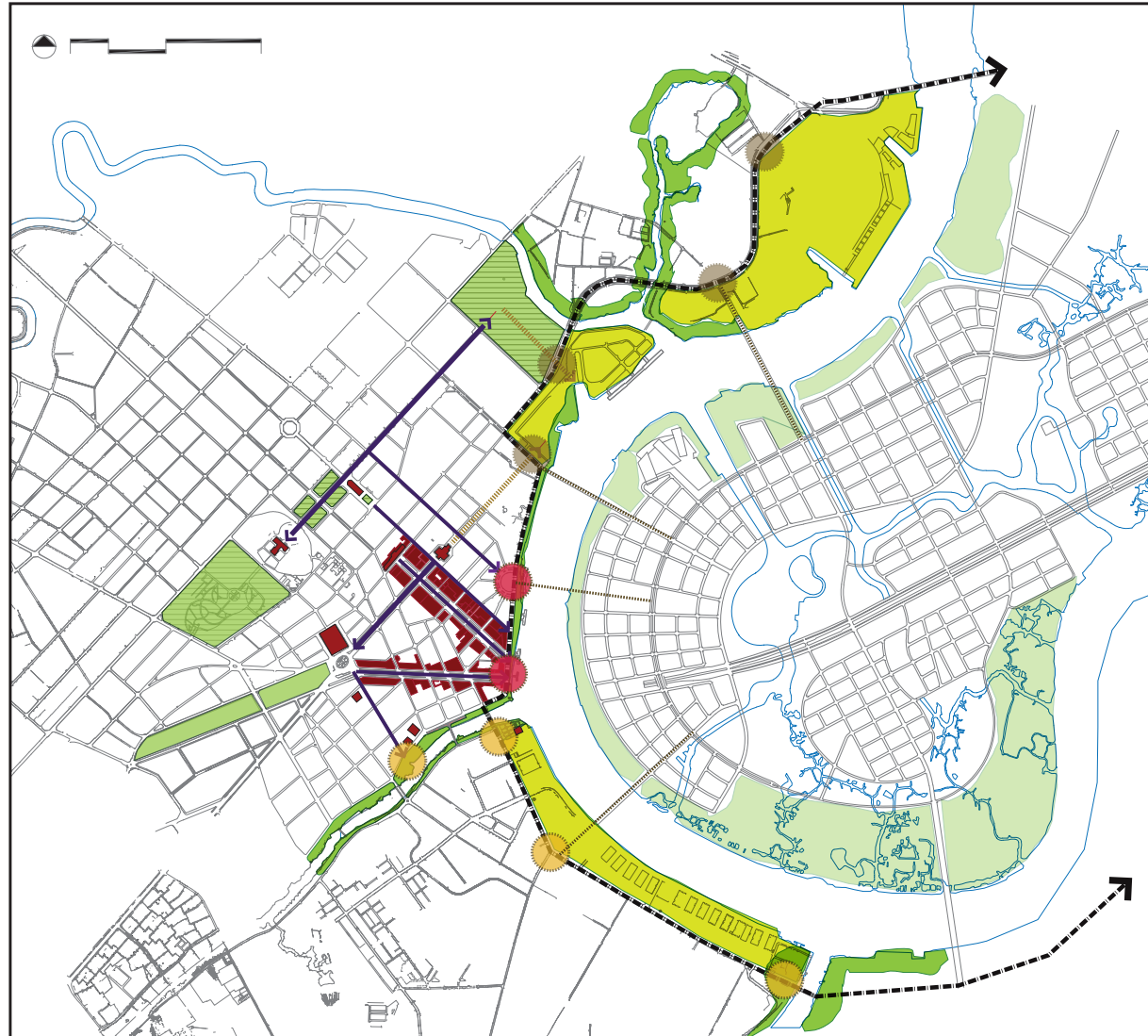
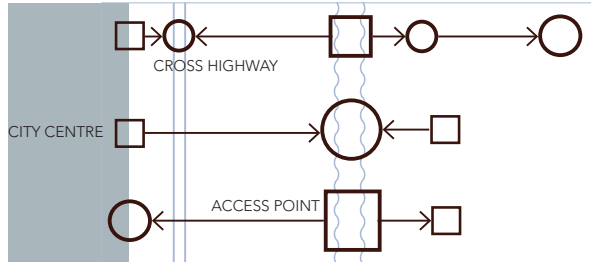
## REMAKING MAIN HISTORIC AXIS TOWARD THE RIVER



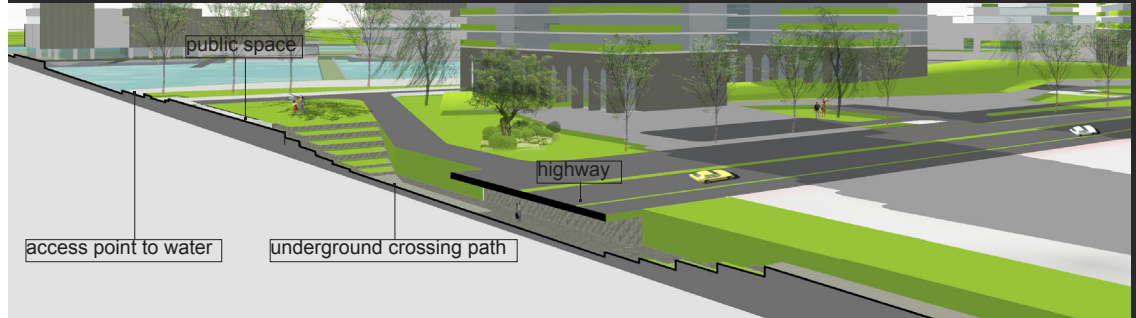
### ELEVATION OF NGUYEN HUE BOULEVARD



## STRATEGY TO IMPROVE THE ACCESS POINTS AND ORIENTATION TOWARDS THE RIVER



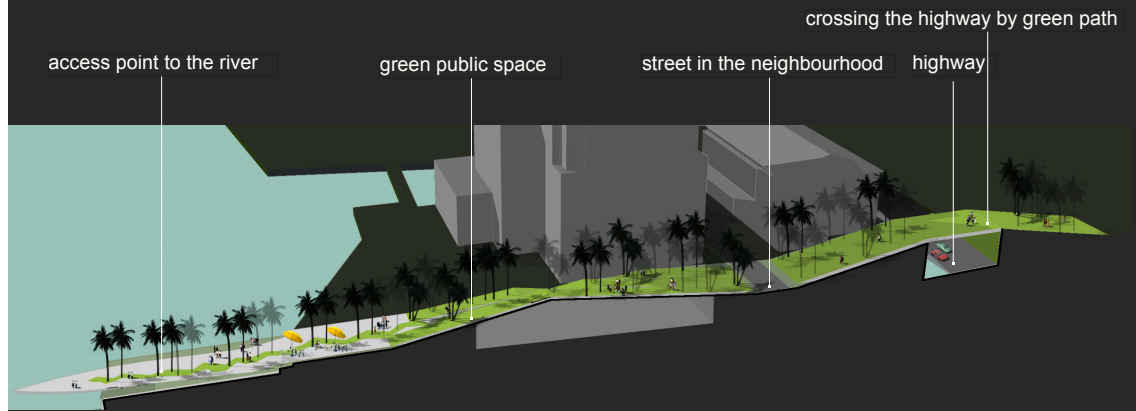
## CROSSING THE HIGHWAYS TO THE WATERFRONT



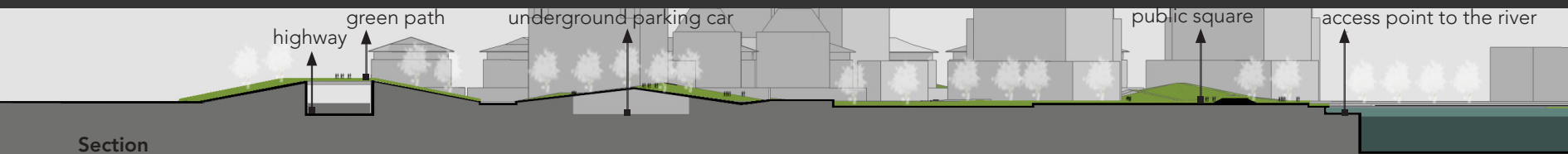
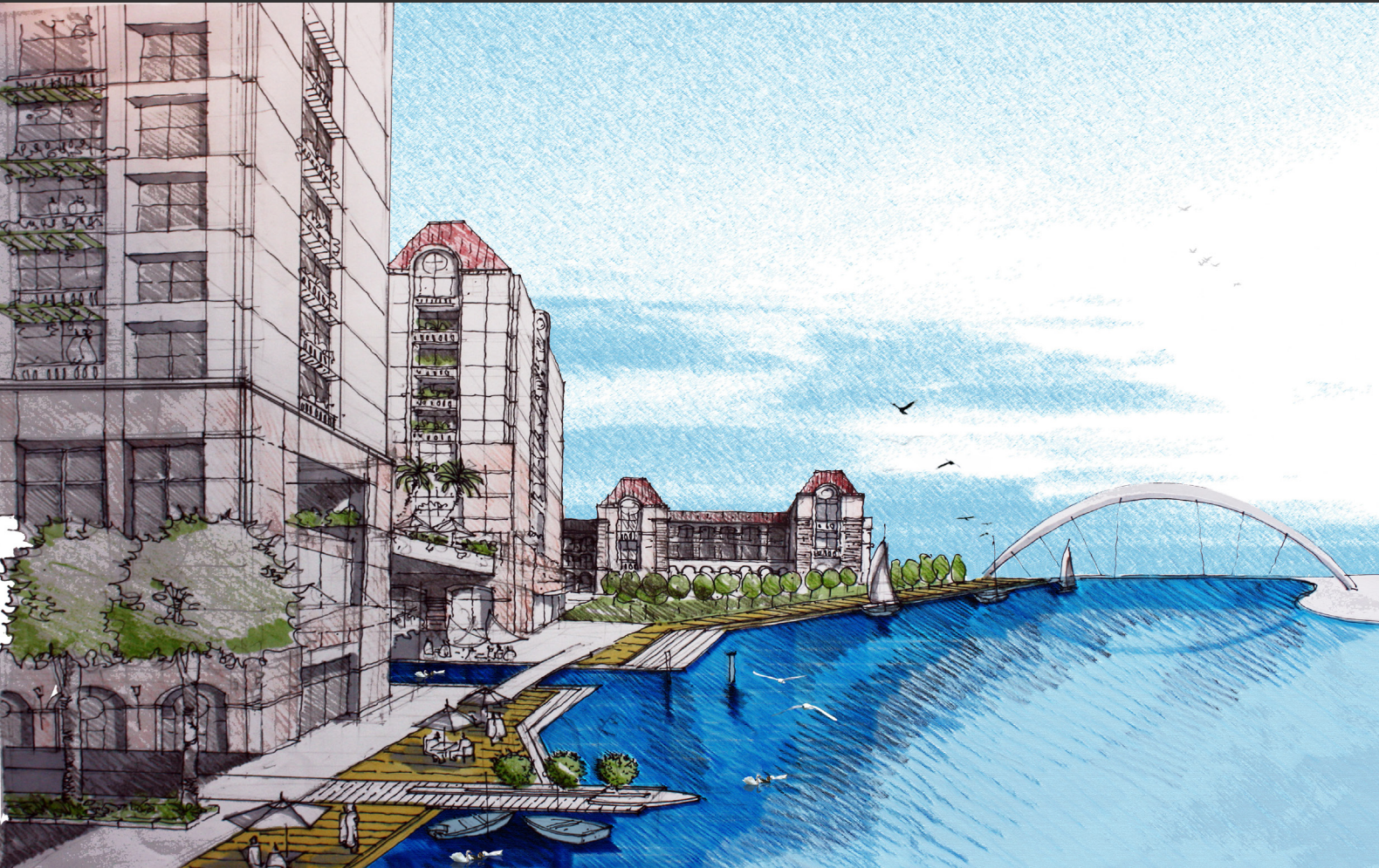
**Node A:** Node to cross the highway of Northern part



**Node B:** Node to connect green space



**Node C:** Node to access water of Southern part

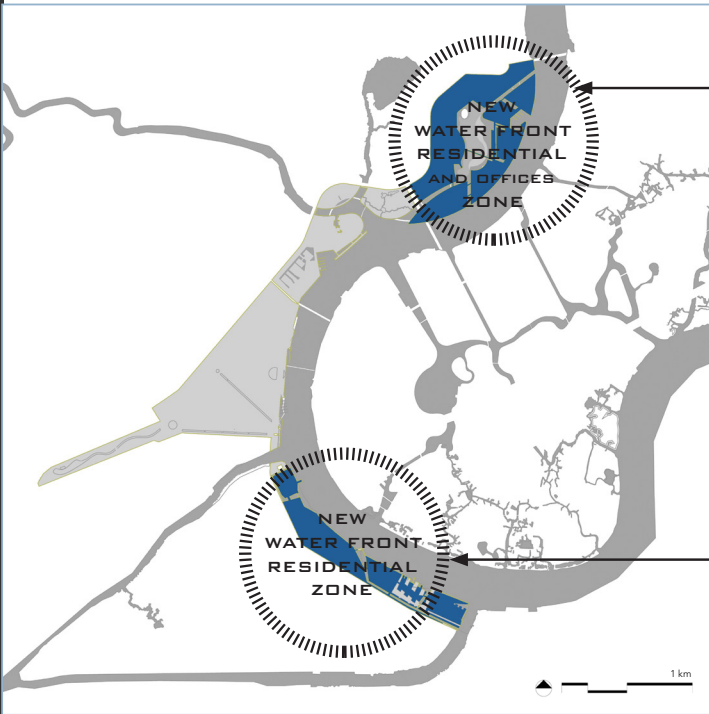


Section



## STRATEGY TO DEVELOP AN ATTRACTIVE WATERFRONT AS A LIVEABLE PLACE FOR LIVING, WORKING AND LEISURE

### A. Developing a new waterfront residential and complex official zone with mix-income urban neighbourhood



#### Goals

ATTRACTIVE PLACE TO LIVE AND WORK

HIGH QUALITY LIVING URBAN ENVIRONMENT

- Living near water
- Living with nature

ACCESSIBILITY TO THE RIVER

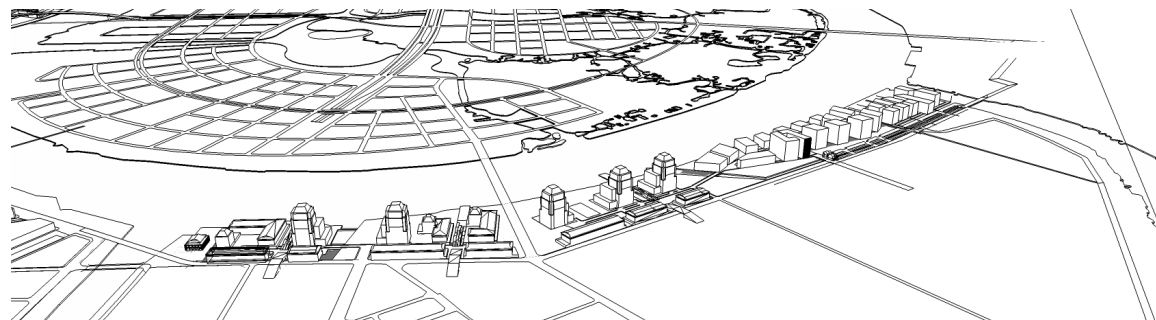
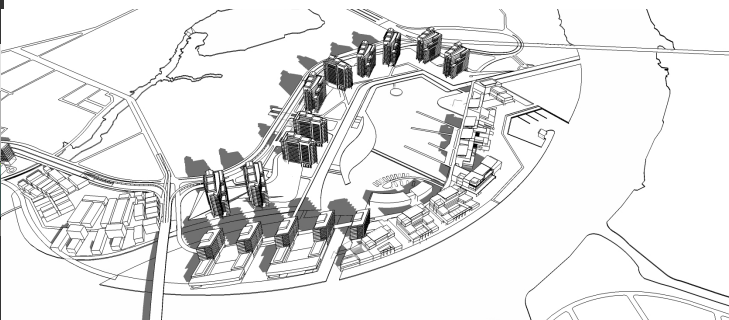
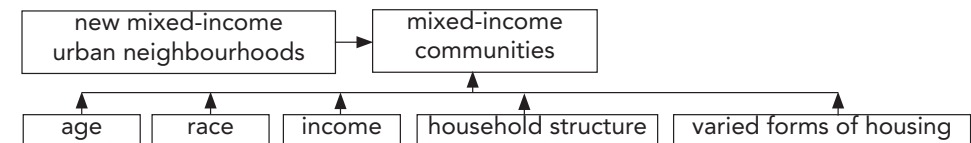
- Link between neighbourhoods and water
- Safe pedestrian routes to access to river sides

NEARBY PUBLIC SPACE

TYPOLOGY WITH LOCAL CHARACTERS

- Traditional character of surrounding neighbourhoods

#### Definition



## NORTHERN NEIGHBOURHOOD

Complex building blocks: Office & Commercial and residential

Cultural park

Waterfront residential blocks for large family and apartment

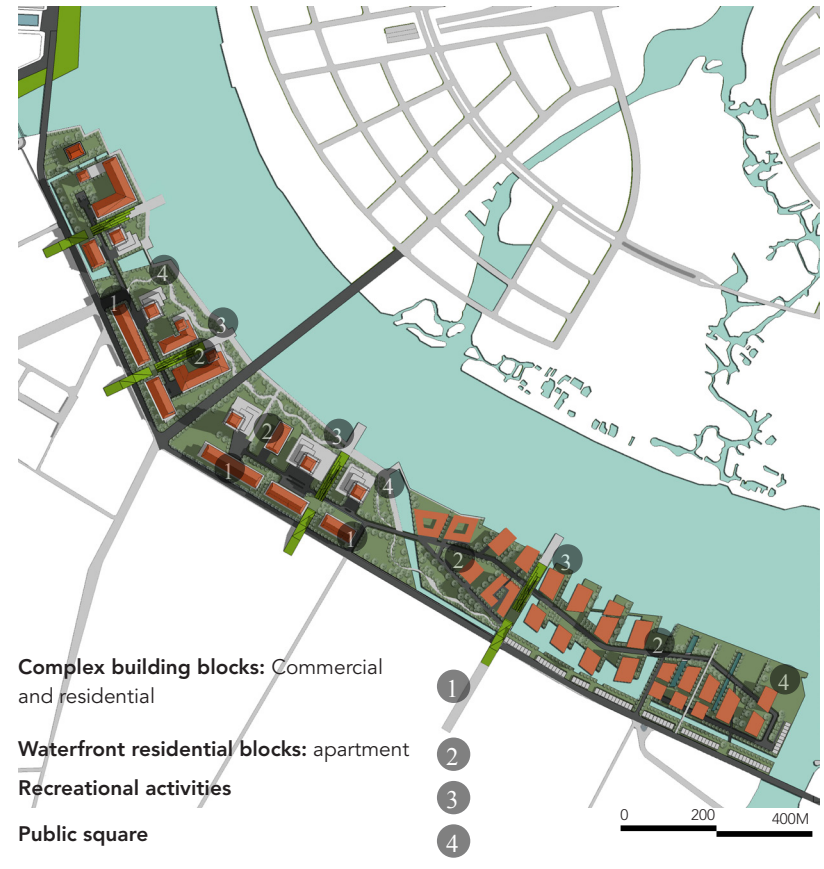
Recreational activities

Public square

Waterfront residential blocks for large and single family



## SOUTHERN NEIGHBOURHOOD



### Water as a main element of the neighbourhood



Present: Few internal water

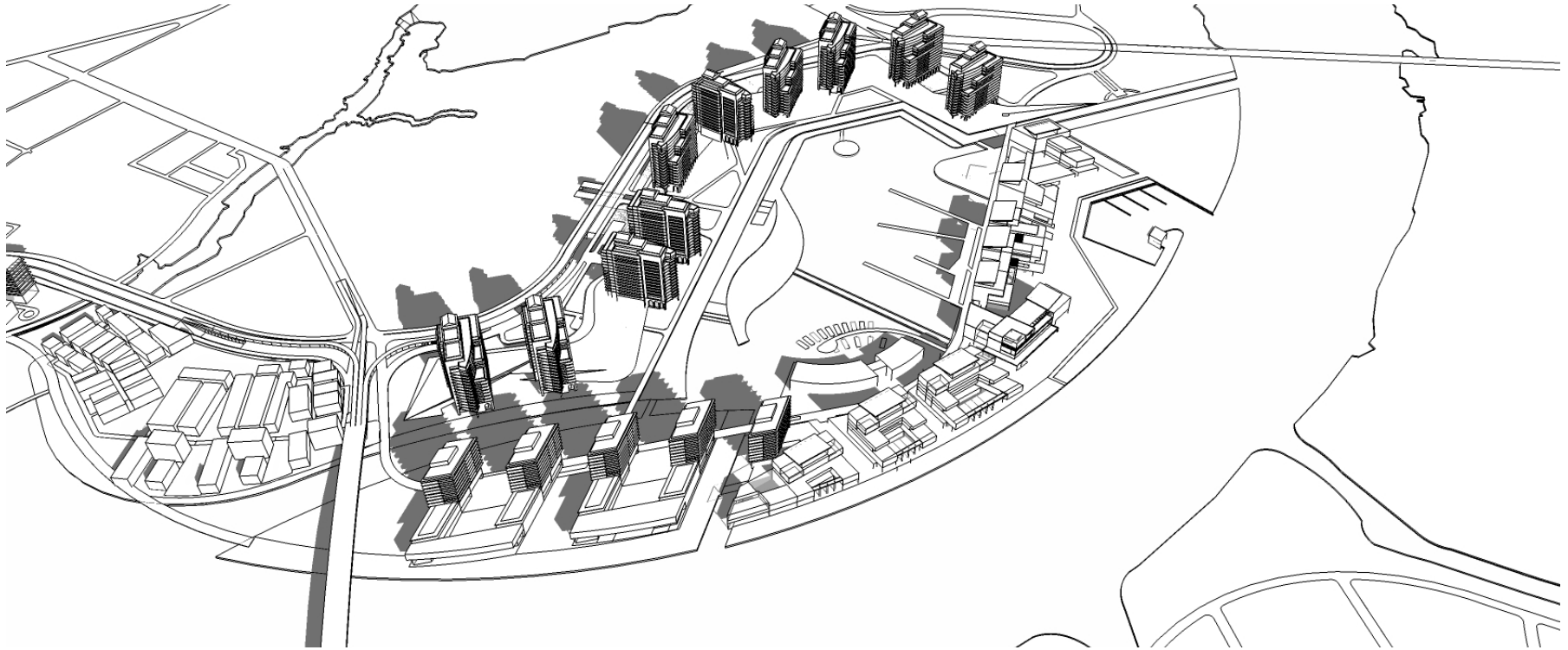
Concept: More internal water

Concept: Circulating water

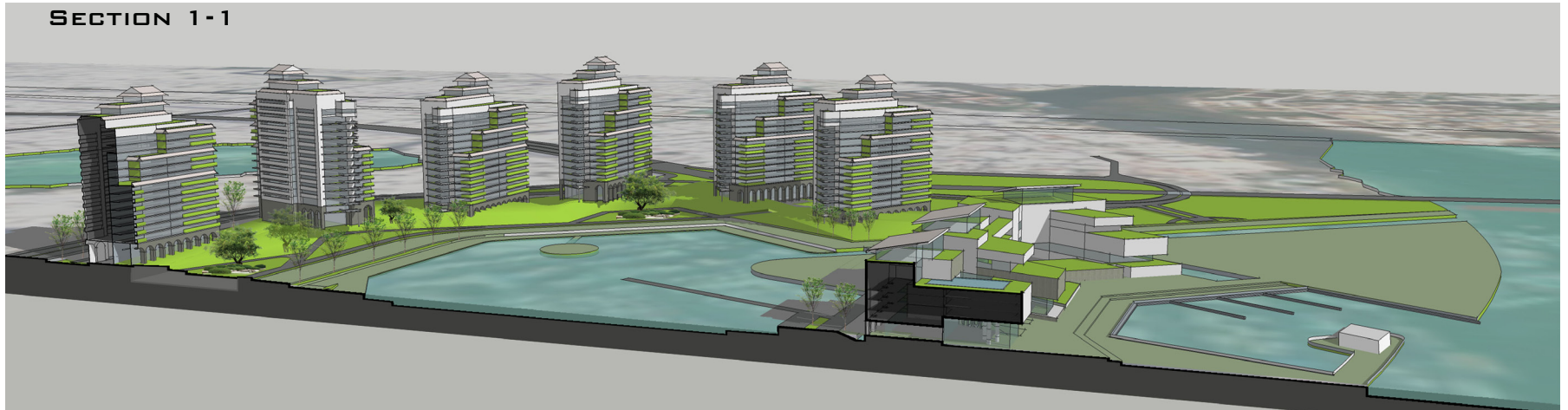
### Creating the window and public spaces to the river

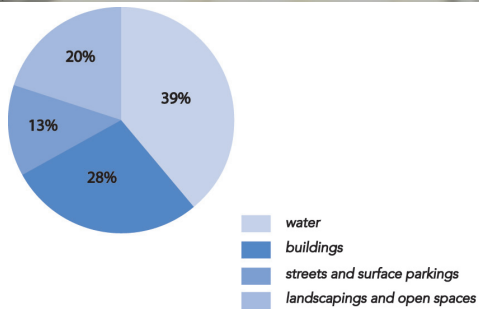


NORTHERN NEIGHBOURHOOD

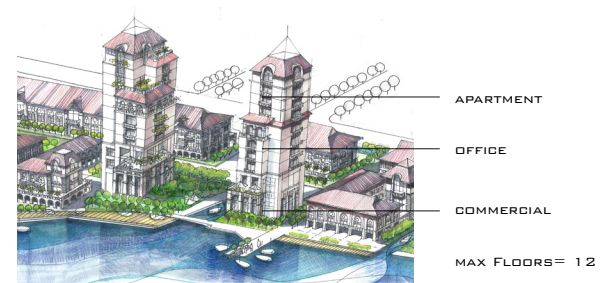
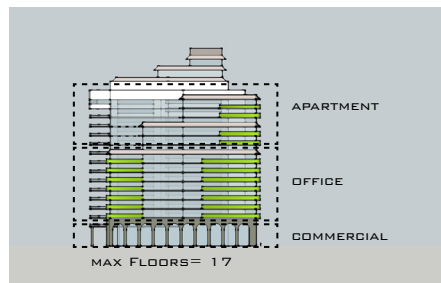


SECTION 1-1





SECTION 1-1



## REDEVELOPING WATERFRONT RESIDENTIAL WITH ALREADY BUILT-UP BLOCK IN LOW-INCOME URBAN NEIGHBOURHOOD

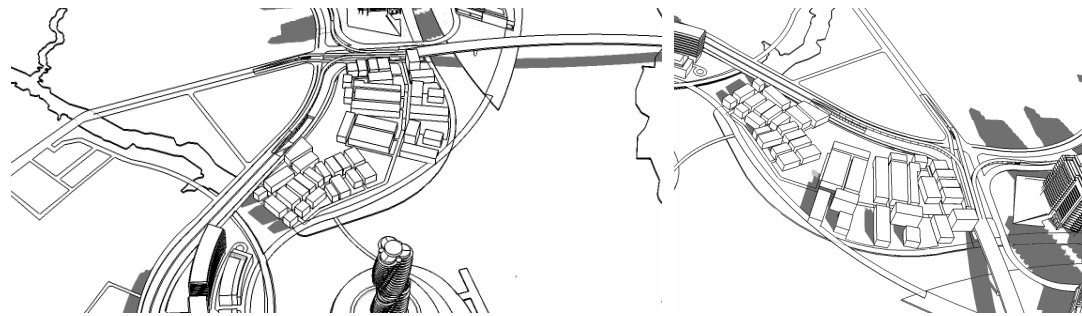
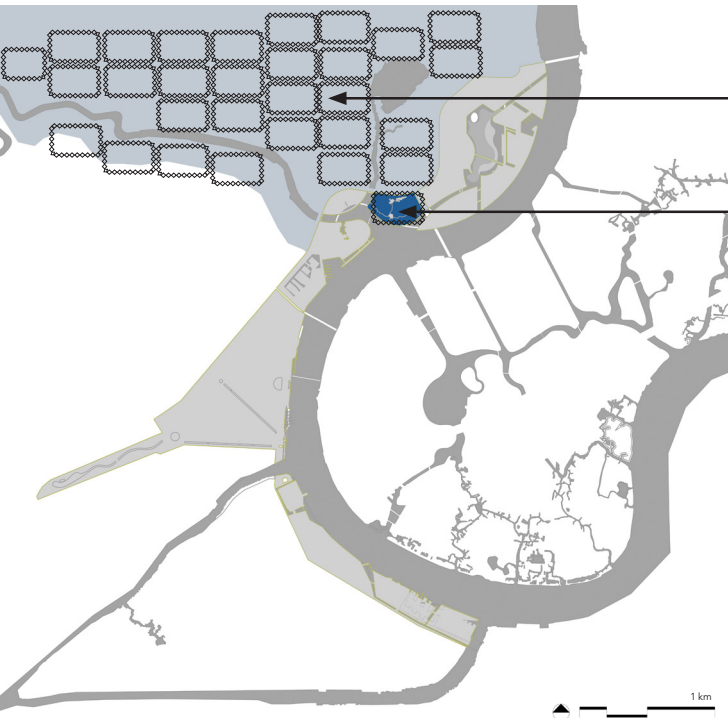
### Goals

OPPORTUNITY AND NEED TO TRANSFORMATION

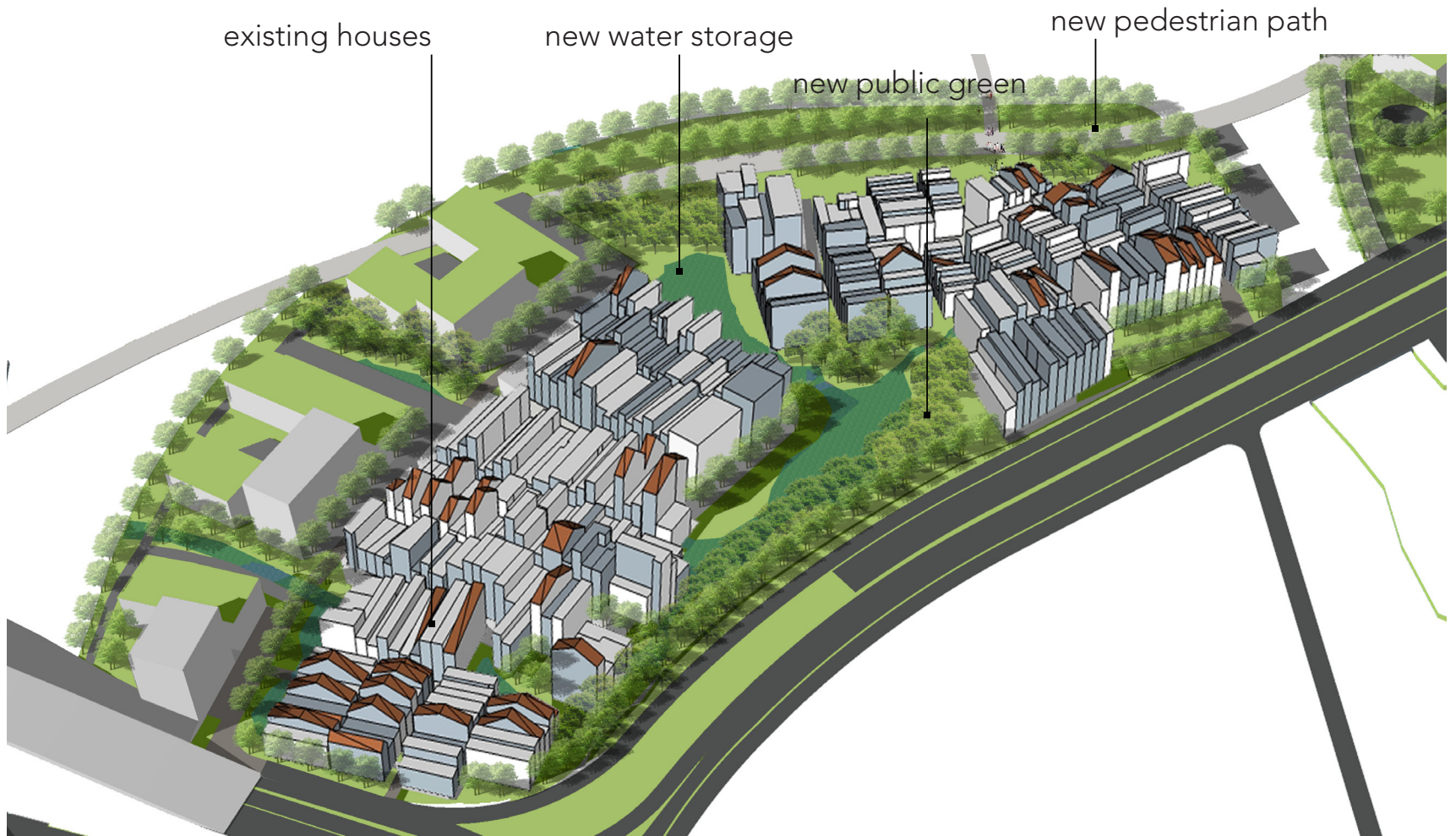
TRANSFORMATION EXISTING NEIGHBOURHOOD

Improving living environment in the neighbourhood

Integrating green and water as main elements of the neighbourhood



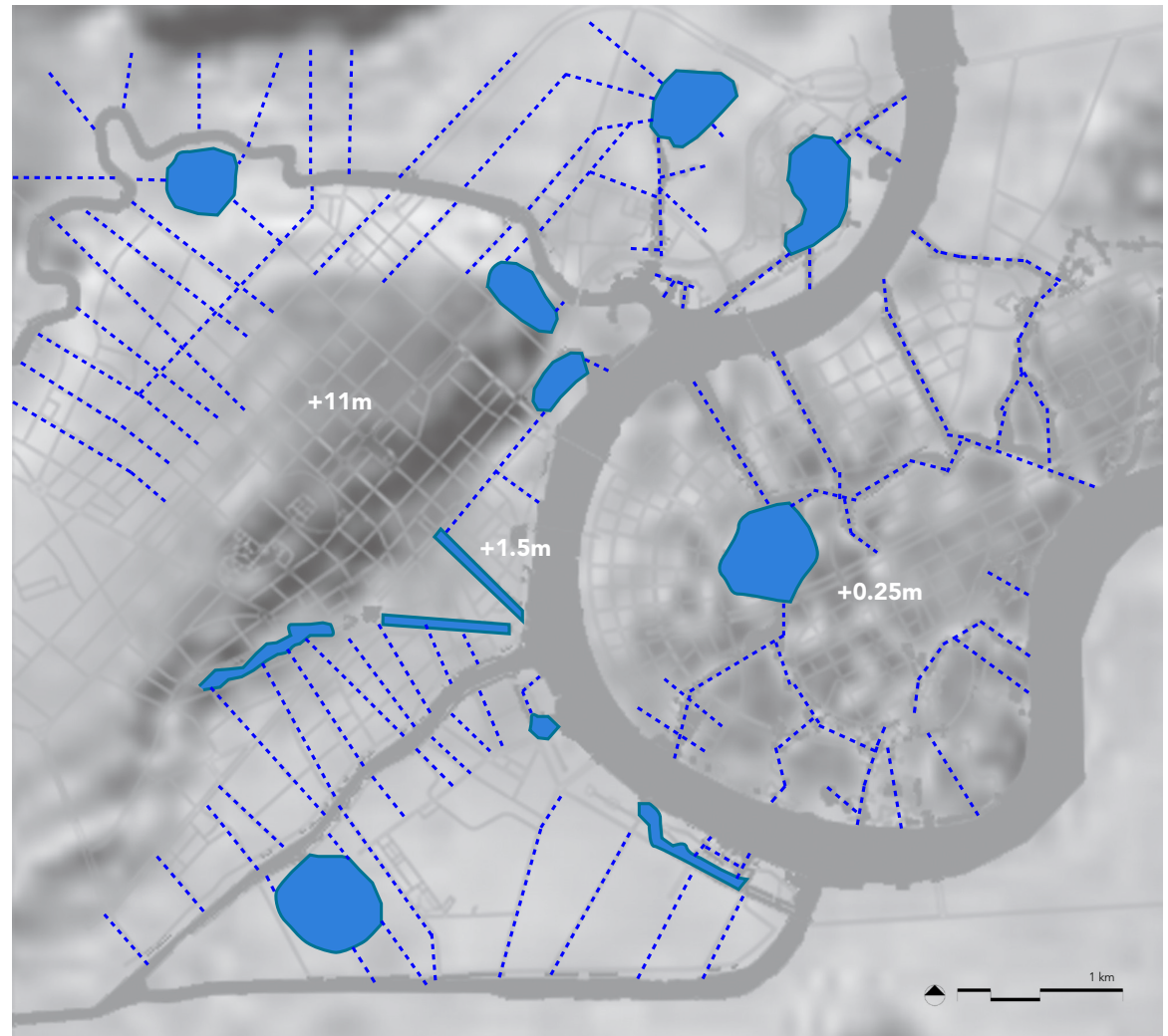
## CREATING HIGH-QUALITY OPEN SPACES BETWEEN EXISTING HOUSING BLOCKS



## STRATEGY TO AVOID FLOODING: REDUCE FLOOD RISK FROM TIDE AND UPSTREAM

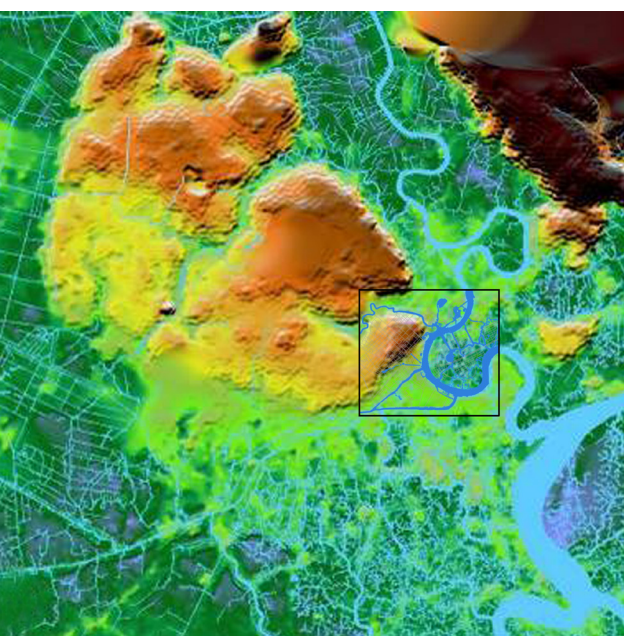
1. Expanding the water storage capacity
2. Collecting and using rainwater instead of drinking water

CREATING OPPOTUNITIES FOR WATER STORAGE AND NEW CANALS AS “ MORE ROOM FOR WATER” IN INNER CITY CENTRE



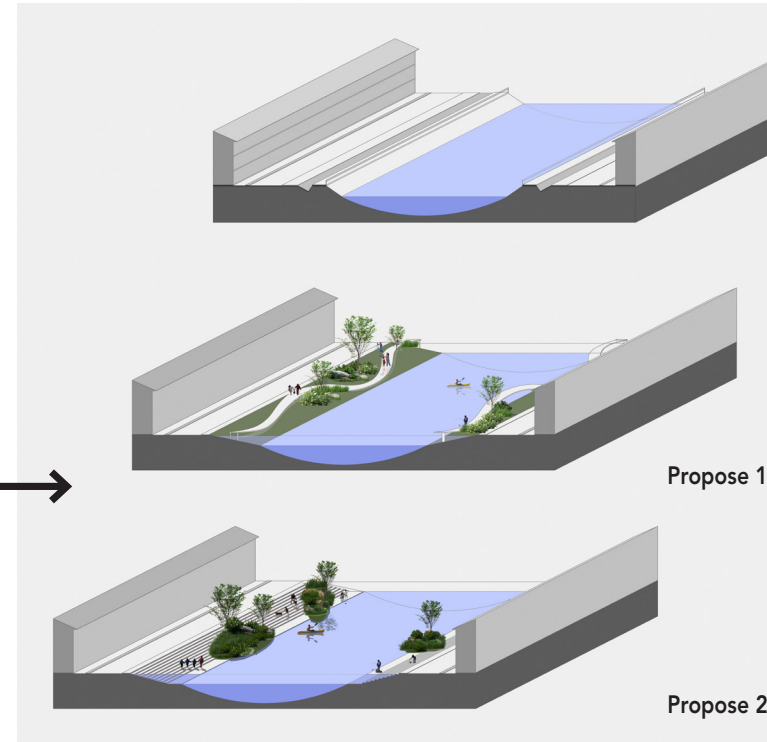
### Legend

- new canals
- new water storage

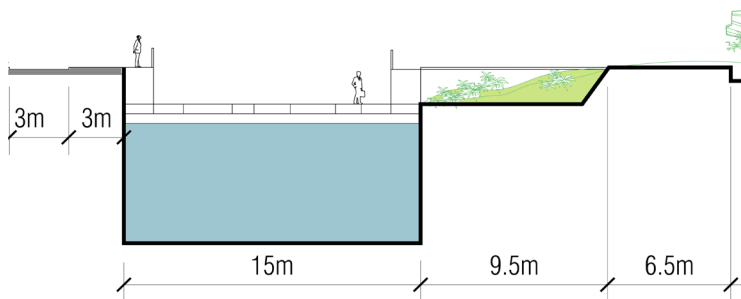


## TRANSFORMATION OF EXISTING CANALS

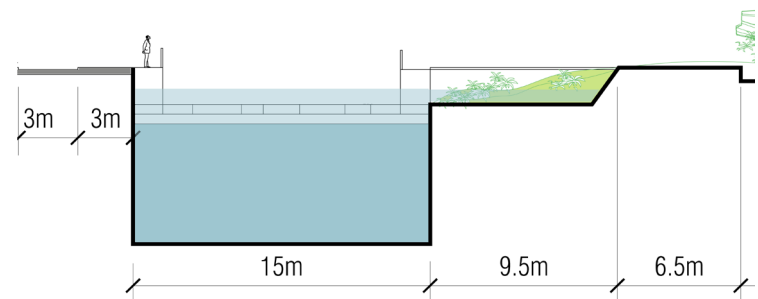
(1) Adding new water storage by transforming existing canals



(2) Developing new canals to create more water storage



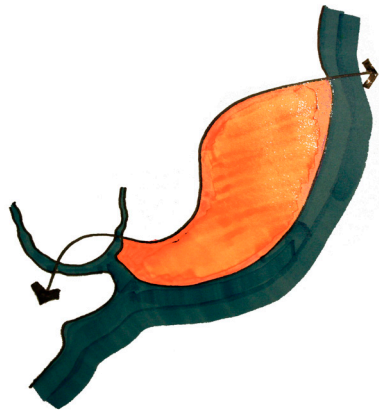
Regular tide



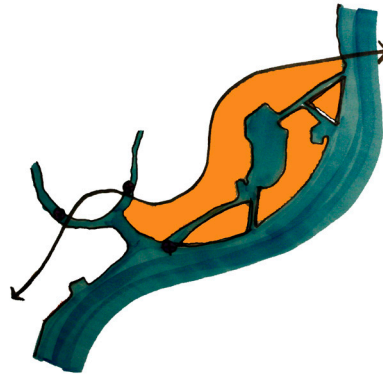
Overflow



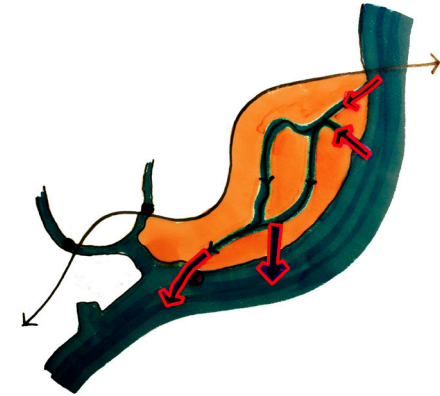
## MORE WATER IN NEIGHBOURHOOD



Present: Few internal water

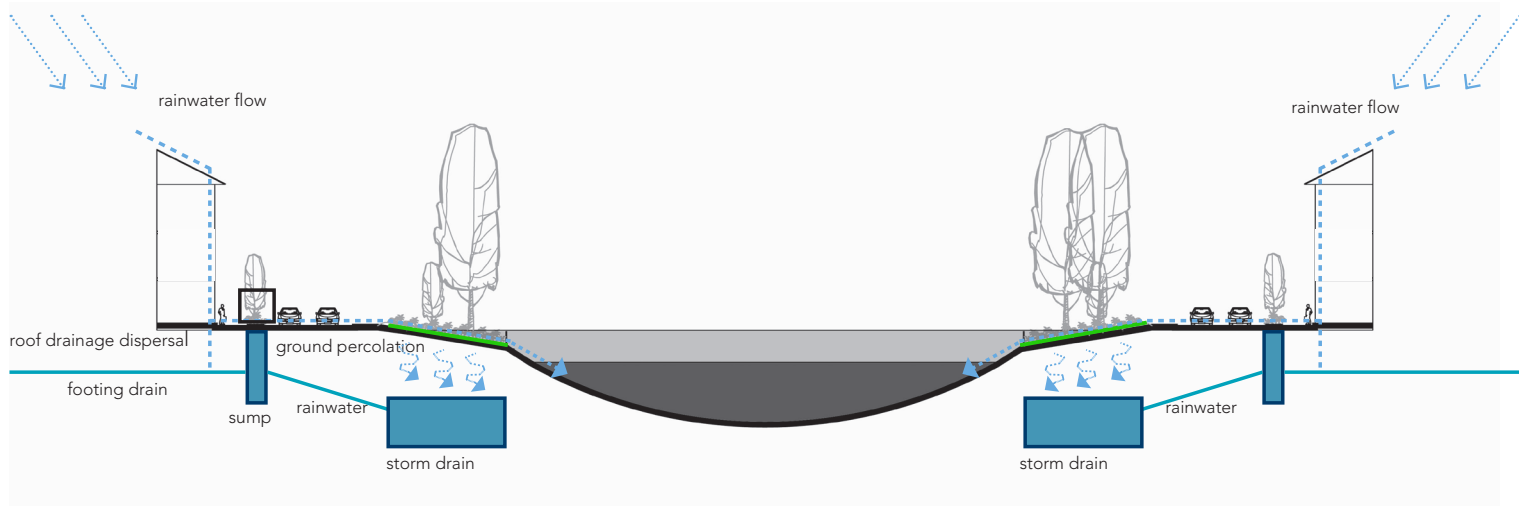


Concept: More internal water

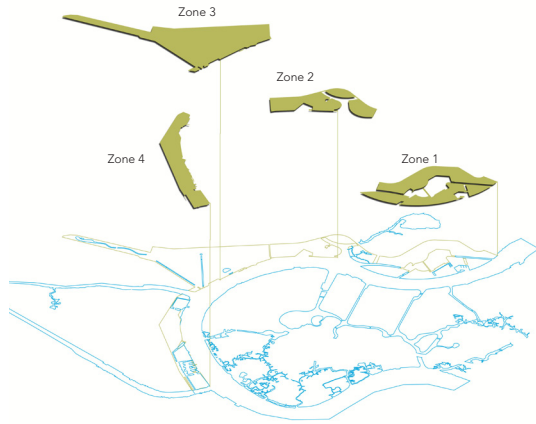


Concept: Circulating water

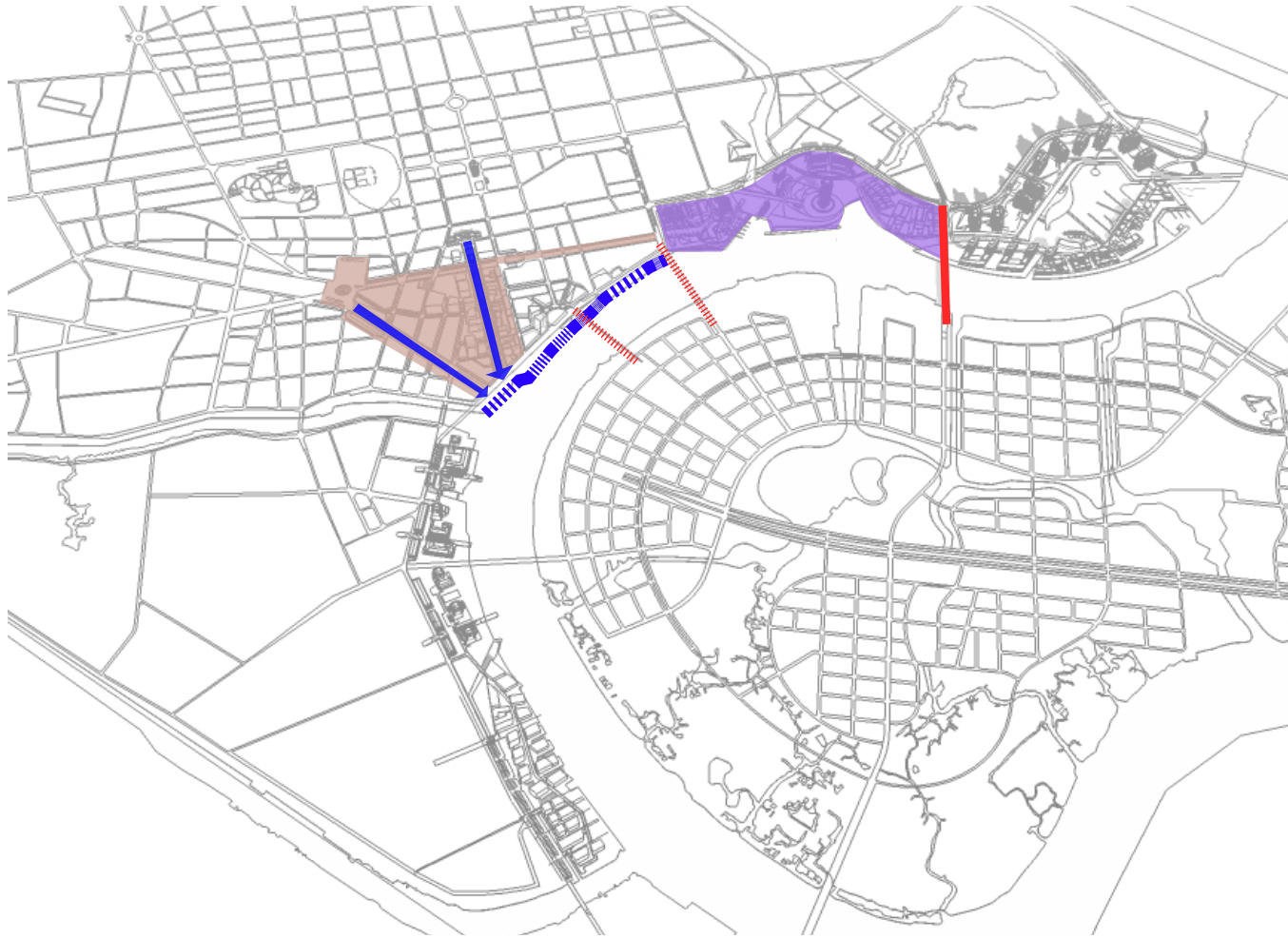
## COLLECTING RAINWATER



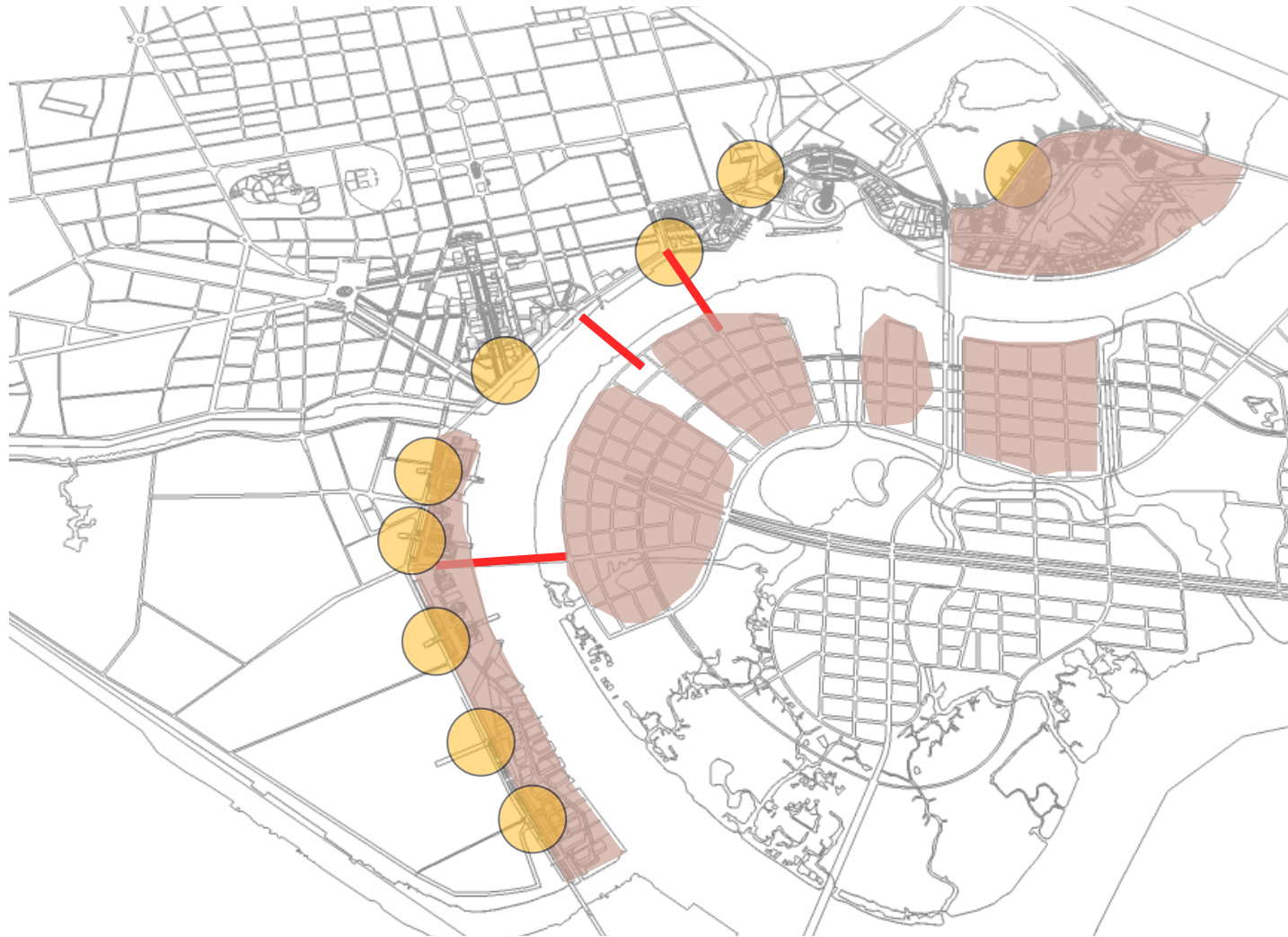
## MASTER PLAN



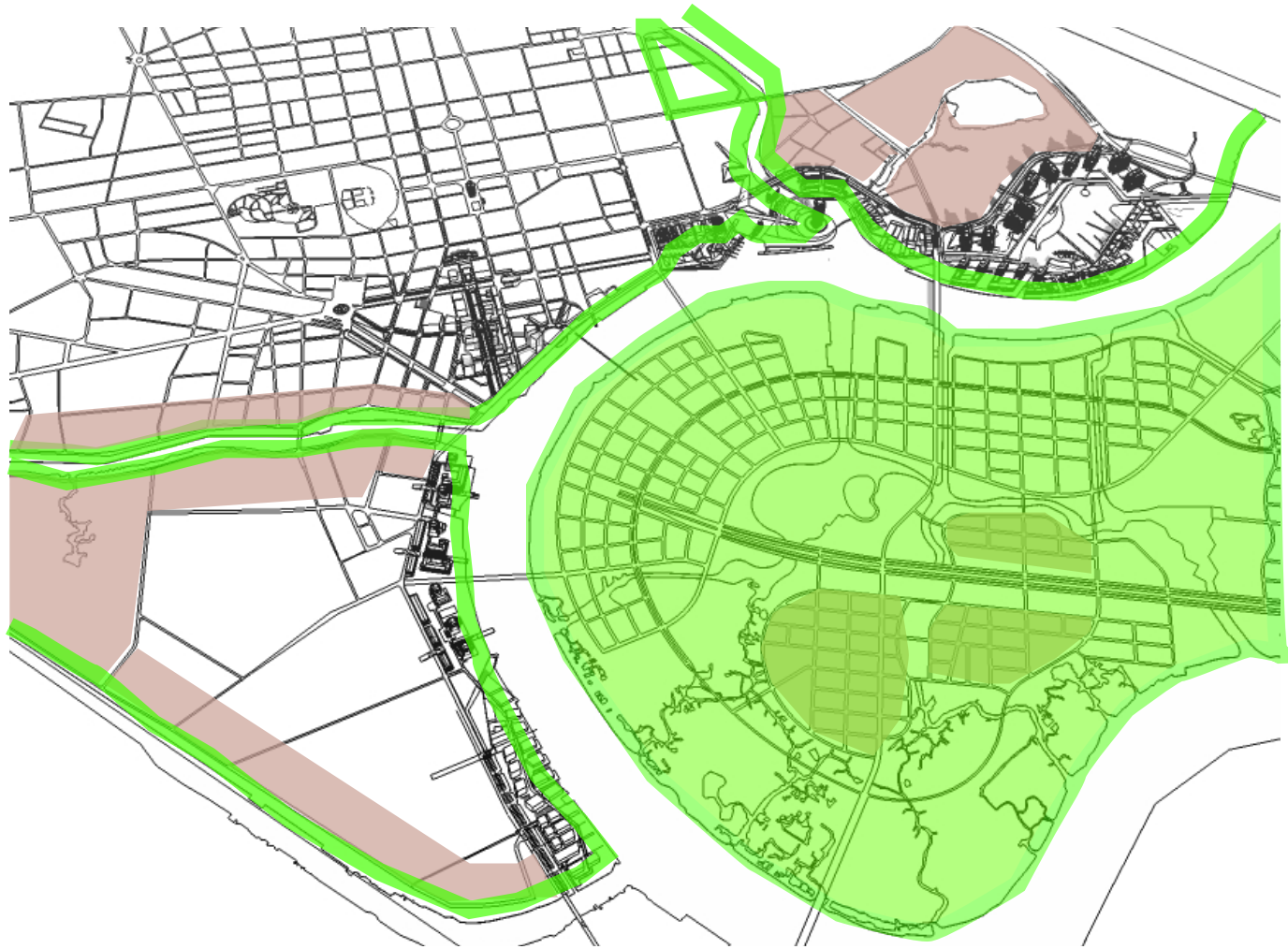
## IMPLEMENTATION PHASES



## FIRST PHASING - 2011-2015



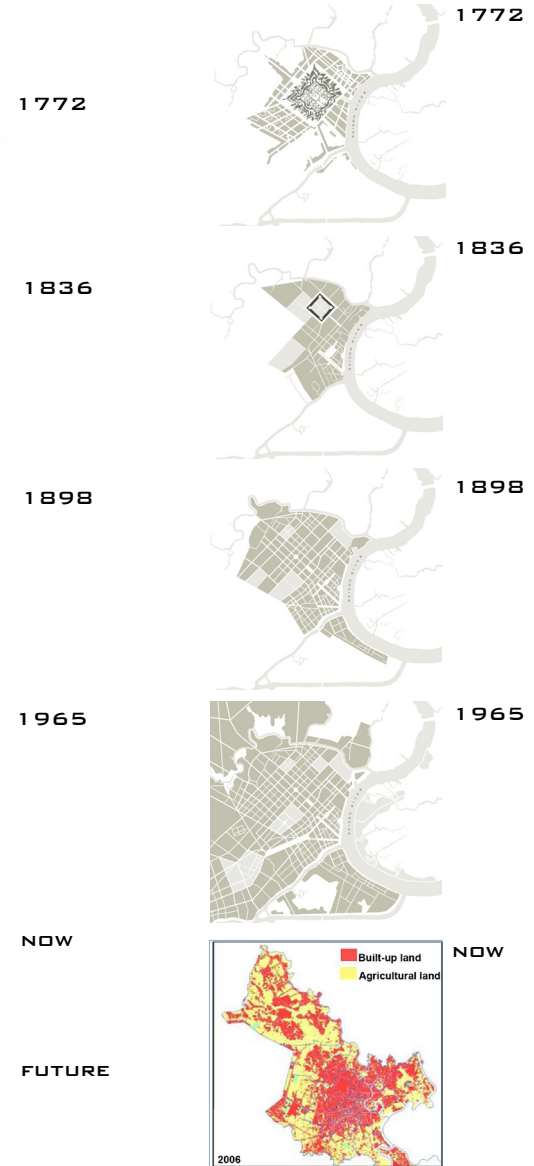
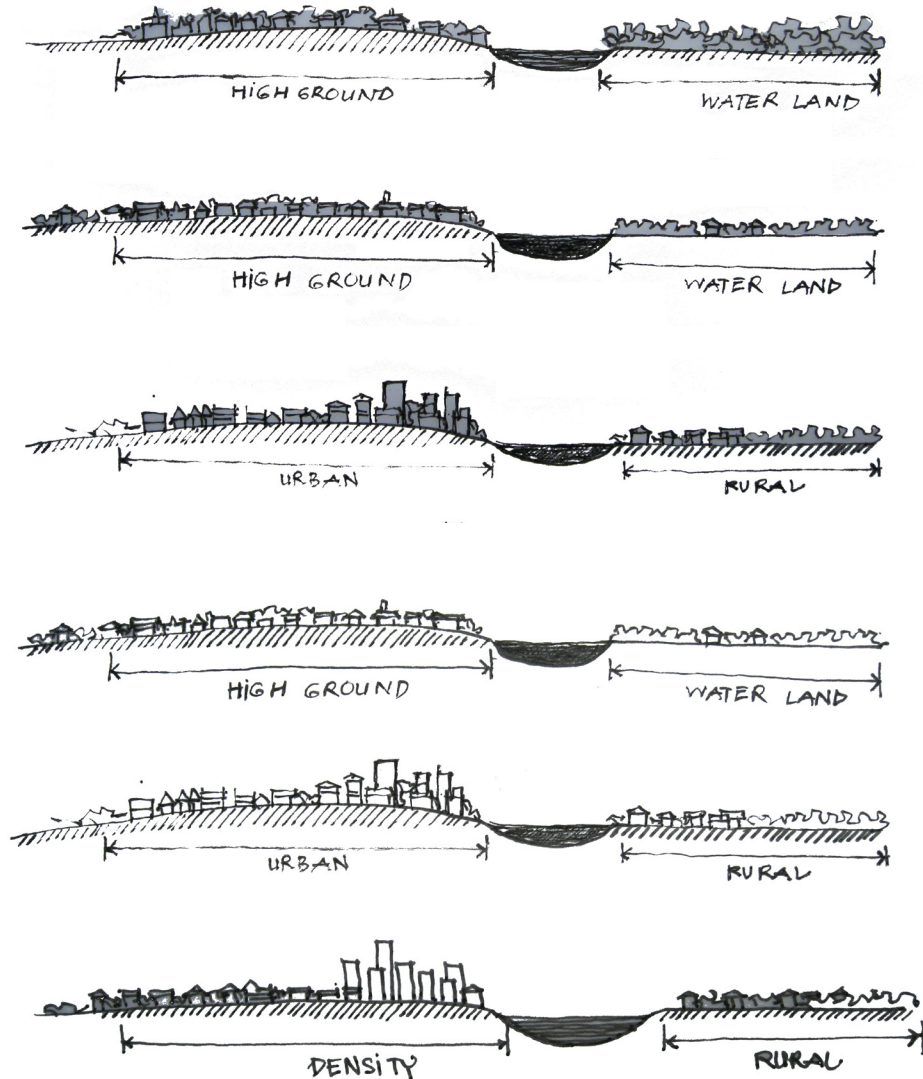
**SECOND PHASING - 2016 - 2025**



**THIRD PHASING - 2026 - 2035**

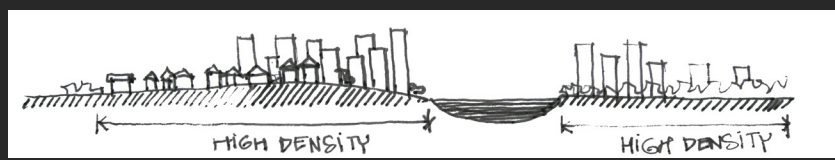
## WHAT ARE CHARACTERS TO ENHANCE THE IMAGE AND UNIQUE IDENTITY OF HO CHI MINH CITY?

### URBAN EXPANSION OF HO CHI MINH CITY



# REGENERATION SAIGON'S PORT

## PROPOSAL URBAN SPATIAL FOR WEST & EAST BANK OF THE RIVER



## PROJECT OF KORN



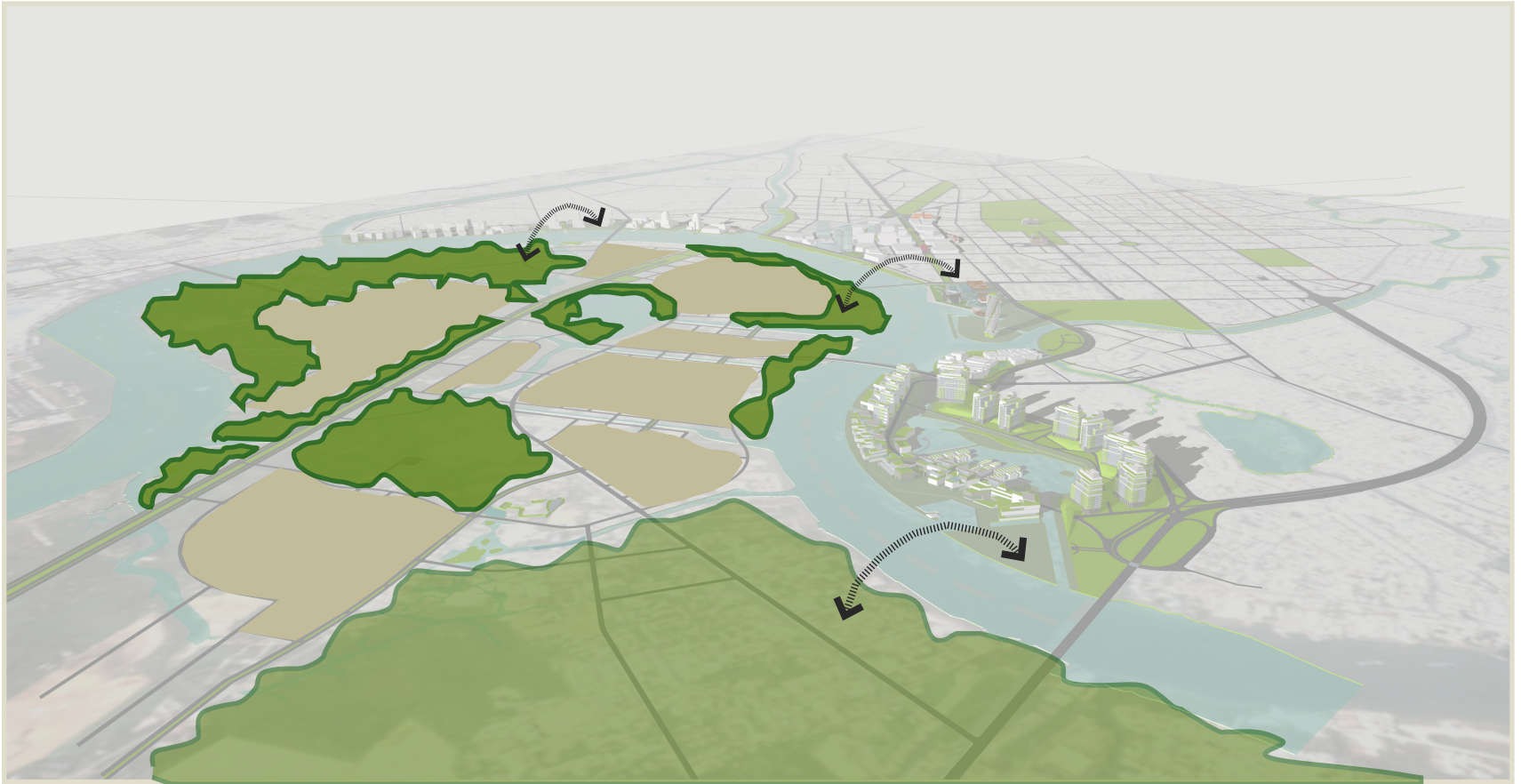
## HIGH QUALITY ENVIRONMENT

To give ecological considerations to the urban development in terms of healthy and safe environment, harmony with nature, and preservation of green and water



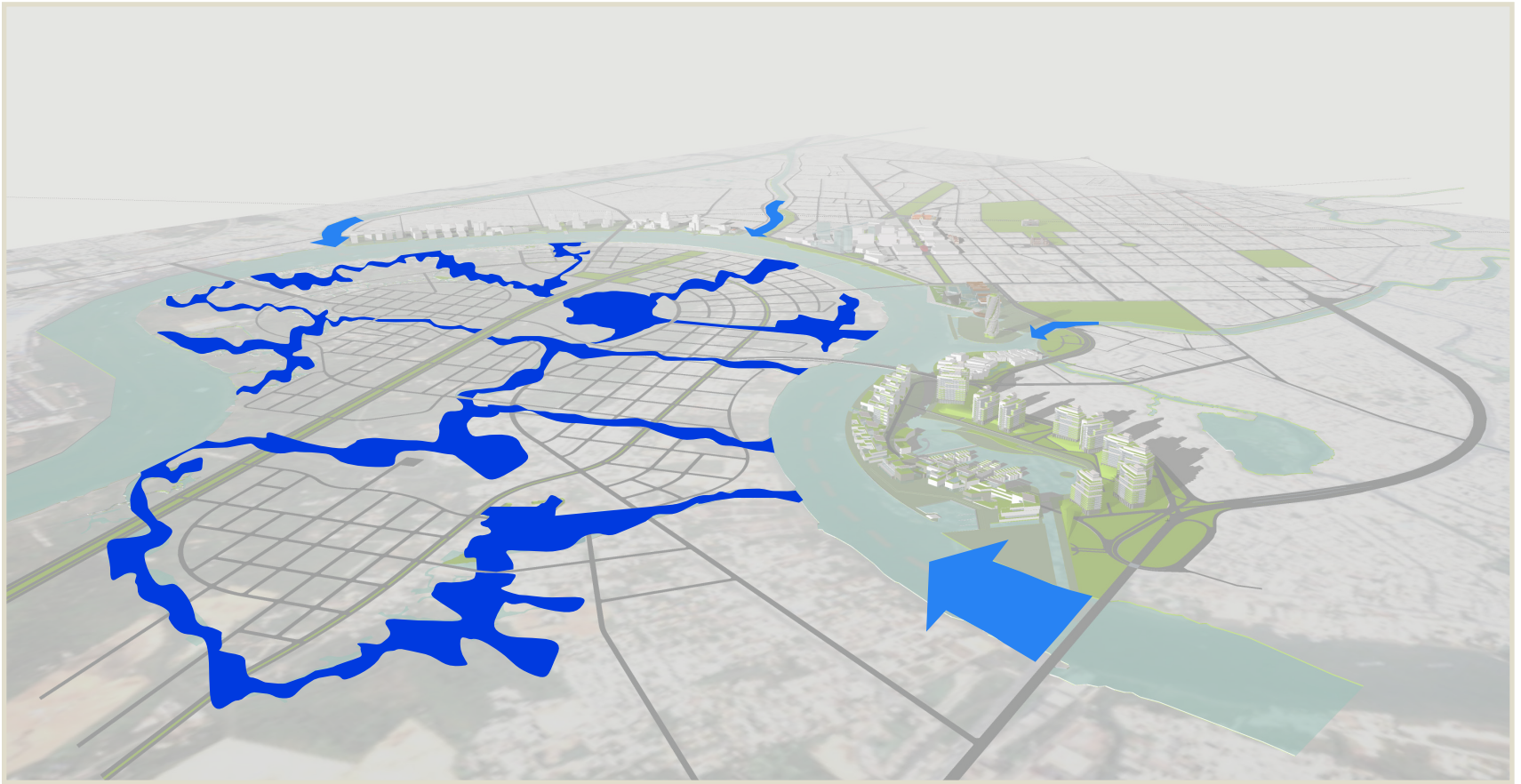
## PROPOSAL FOR EAST BANK OF THE RIVER

DEVELOP THE CITY WITH A FRIENDLY URBAN ENVIRONMENT





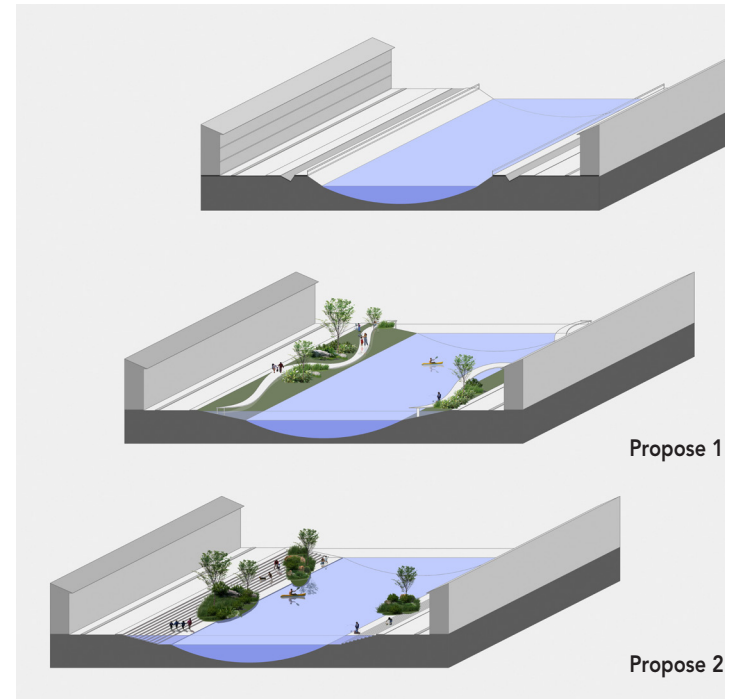
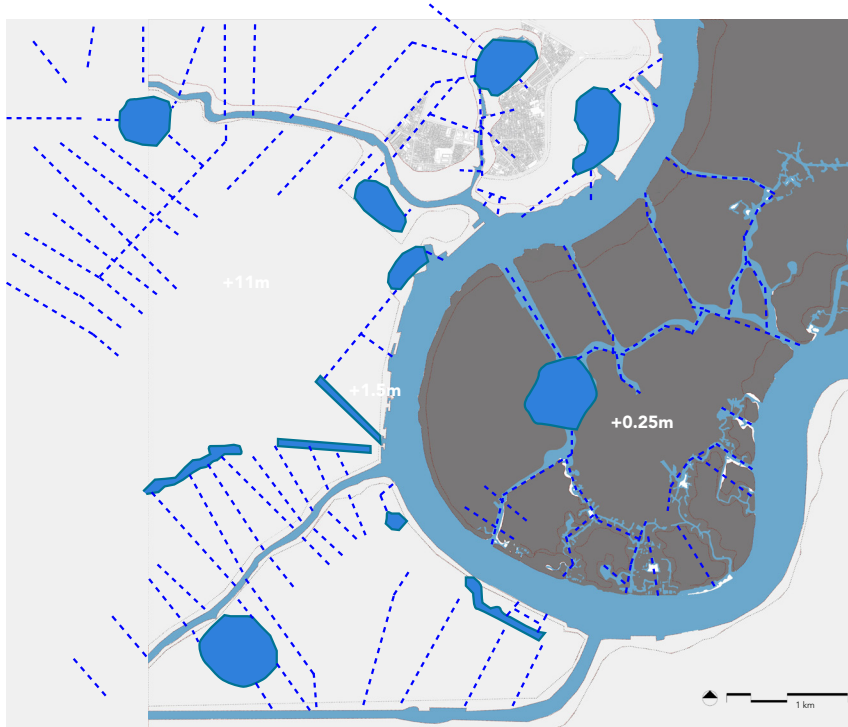
CREATING OPPOTUNITIES FOR WATER STORAGE AND NEW CANALS AS “ MORE ROOM FOR WATER” IN INNER CITY CENTRE



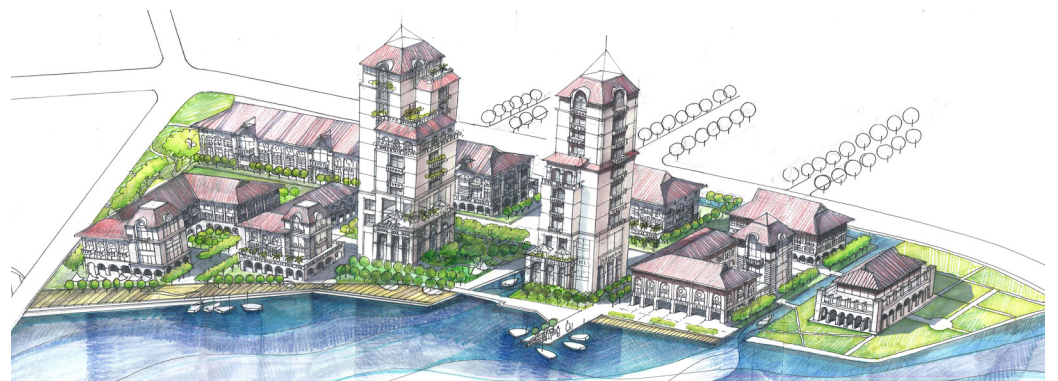
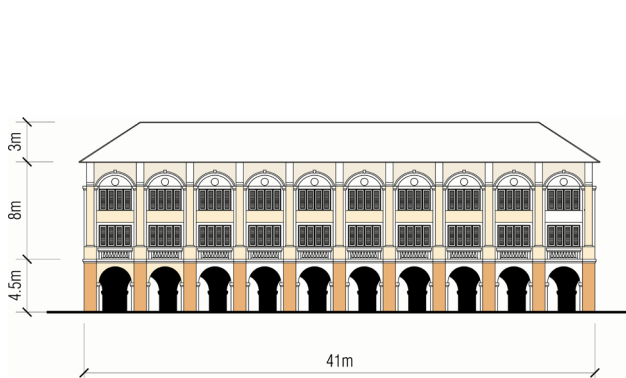
Canal system is the unique water-based social economic structures including port-boat-market activities and canal handcraft villages, processing a rich cultural and religious diversity

# REGENERATION SAIGON'S PORT

REMINDED THE FORMER WATER IMAGES AND CULTURAL LANDSCAPE BY ENCOURAGING ATTRACTIVE USES OF CANALS



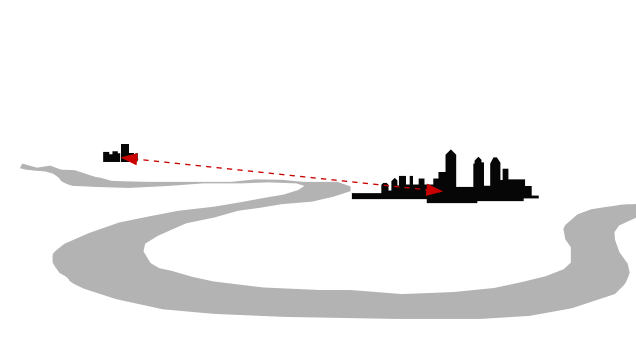
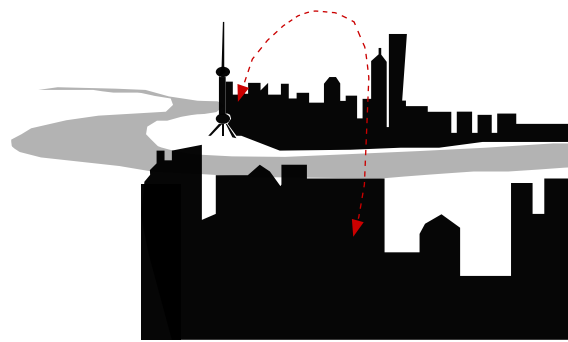
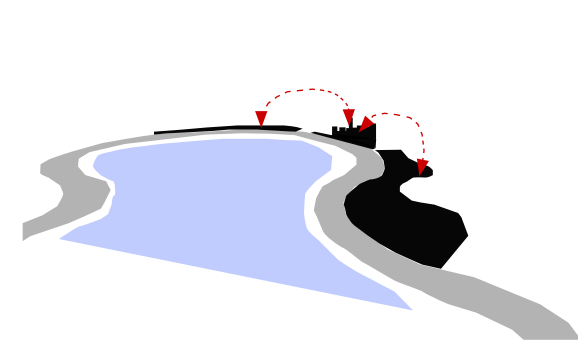
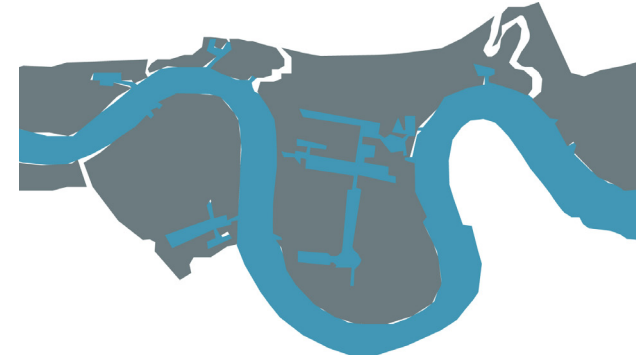
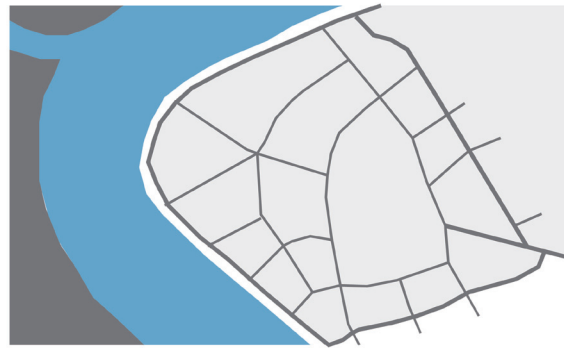
## LOCAL CHARACTERS OF ARCHITECTURE





# REGENERATION SAIGON'S PORT

## SAI GON WATERFRONT PROJECT AND PUDONG, CANARY WHARF PROJECT



urban firendly environment

natural landscape



urban with high-rise office towers

“When we lose a historic place, we lose a part of who we are... ”

*([http://www.nationaltrust.org/History is in our hands](http://www.nationaltrust.org/History%20is%20in%20our%20hands), 2003)*

**“Culture is the whole complex of distinctive spiritual, material, intellectual and emotional features that characterize a society or social group”**

*(Source: [www.unesco.org/culture/laws/mexico/html\\_eng/page1.shtml](http://www.unesco.org/culture/laws/mexico/html_eng/page1.shtml), 14/10/03)*

The project rethinks the distinctive valuable of the water city to regain its cultural image, identity and unique local characters

Thank you very much and Questions !