

Structural and lithological analysis of a foreland fold-and-thrust belt in the Umbria-Marche Apennines (Italy)

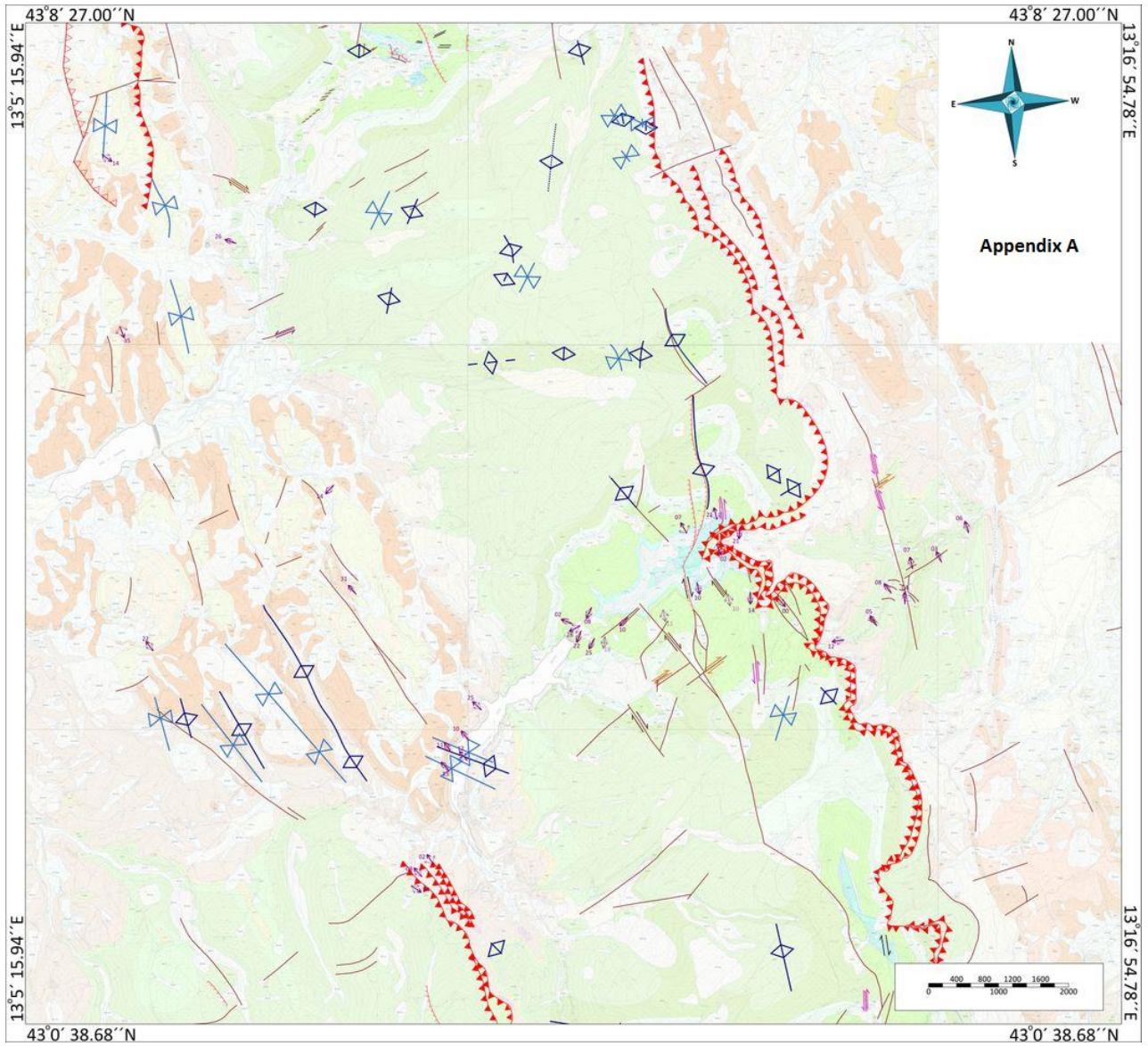
J. Alsemgeest^a, V. Steenhuisen^b, D.J. van Veen^b

^a Faculty of Earth and Life Sciences, Vrije Universiteit Amsterdam, De Boelelaan 1085-1087, 1081 HV Amsterdam, The Netherlands

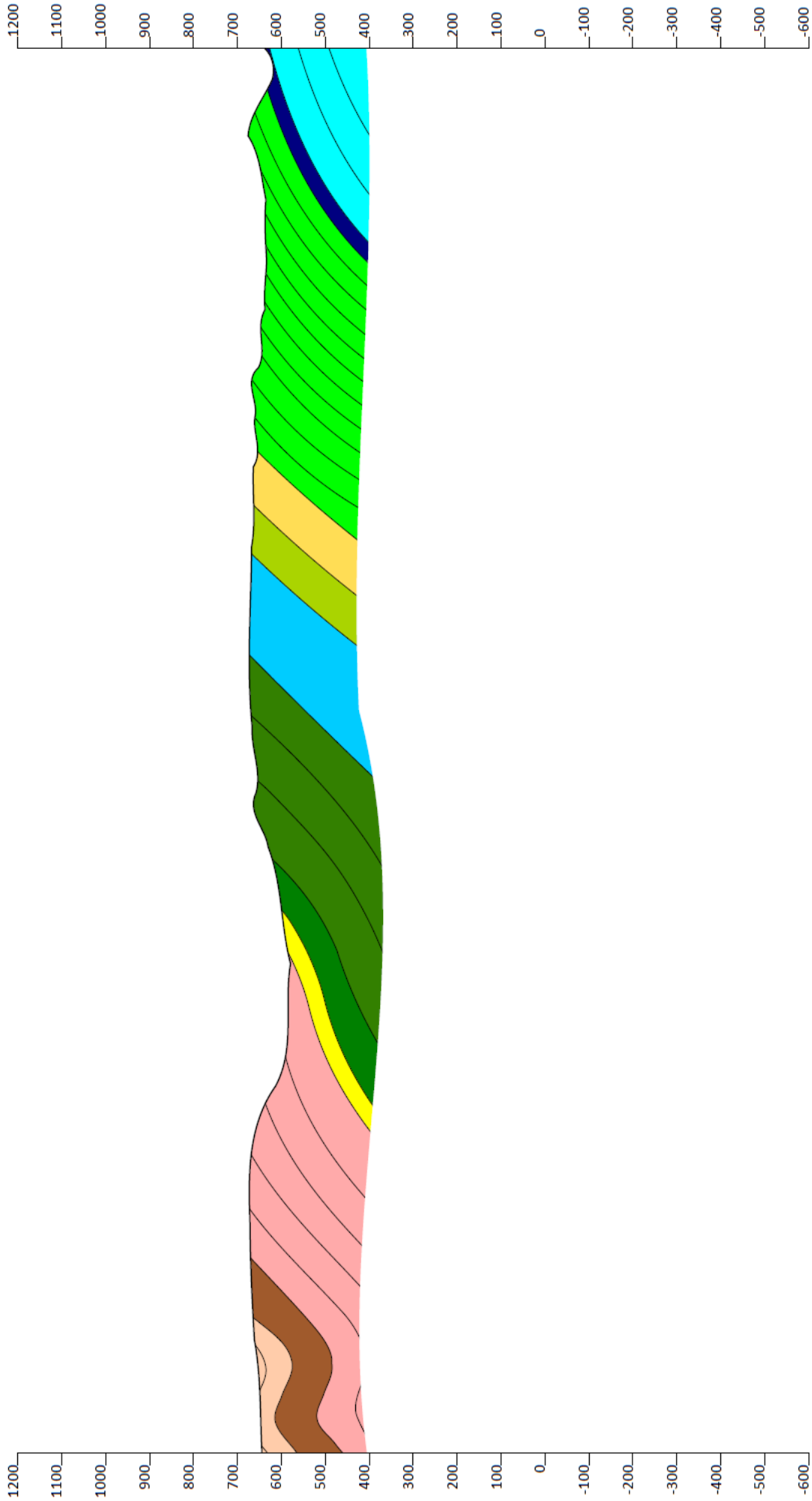
^b Department of Geoscience and Engineering, Delft University of Technology, Stevinweg 1, 2628 CN Delft, The Netherlands

Index

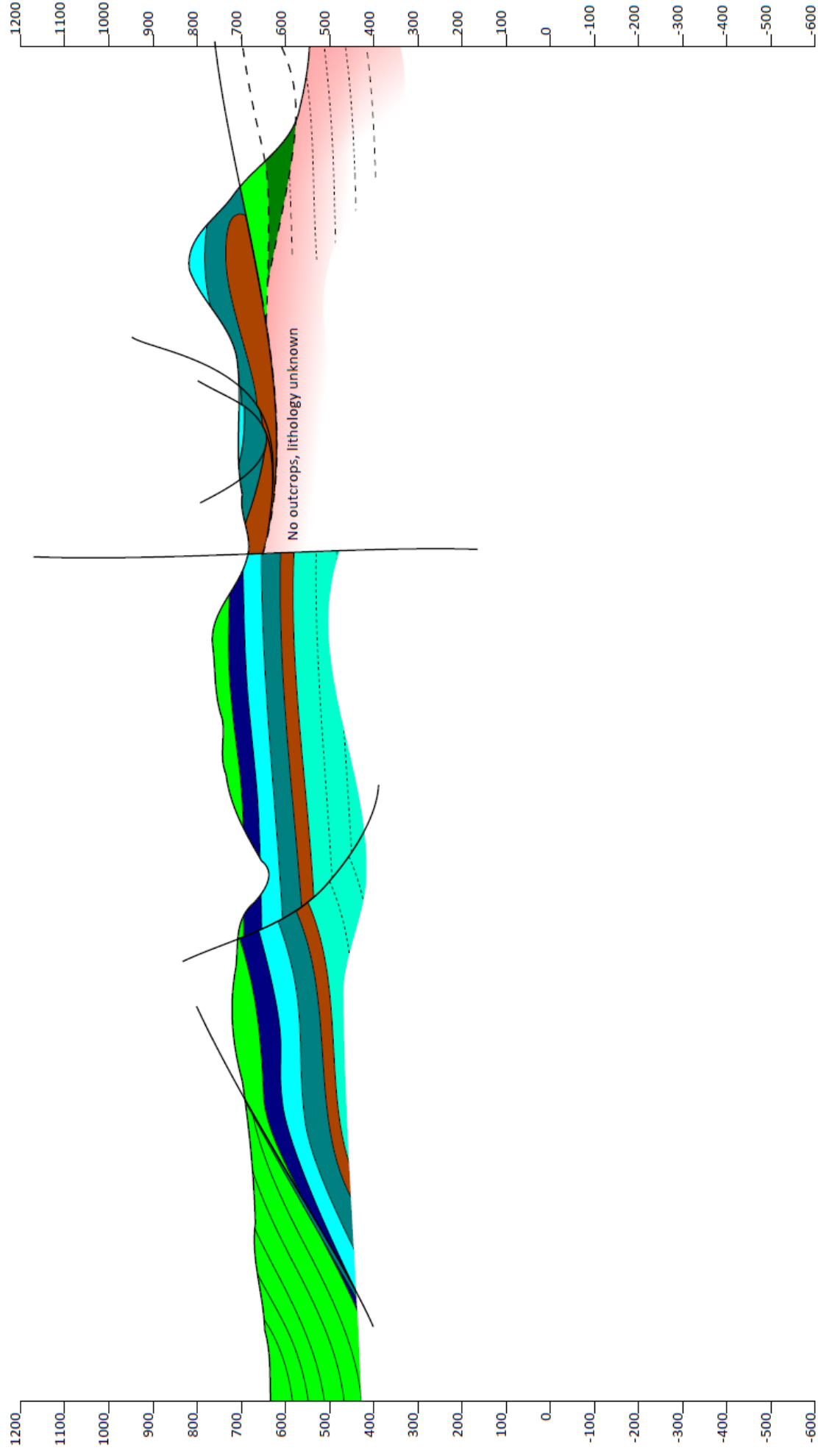
Appendix A	Structural Map
Appendix B	Cross sections belonging to figure 3.1 and appendix F.3
Appendix B.1	Cross section 1
Appendix B.2	Cross section 2
Appendix B.3	Cross section 3
Appendix B.4	Cross section 4
Appendix B.5	Cross section 5
Appendix B.6	Cross section 6
Appendix B.7	Cross section 7
Appendix C	Stereoplots
Appendix C.1a-c	Stereoplot of dome structure
Appendix C.2	Stereoplot of the Sibillini thrust
Appendix C.3	Stereoplot of microfolds of group 13 and waypoint 189
Appendix D	Digital geological map of the Monte Sibillini area (208,3 MB)
Appendix E	Map showing the defined groups of waypoints
Appendix F	Legends
Appendix F.1	Legend maps
Appendix F.2	Legend cross sections
Appendix F.3	Map with locations of cross sections



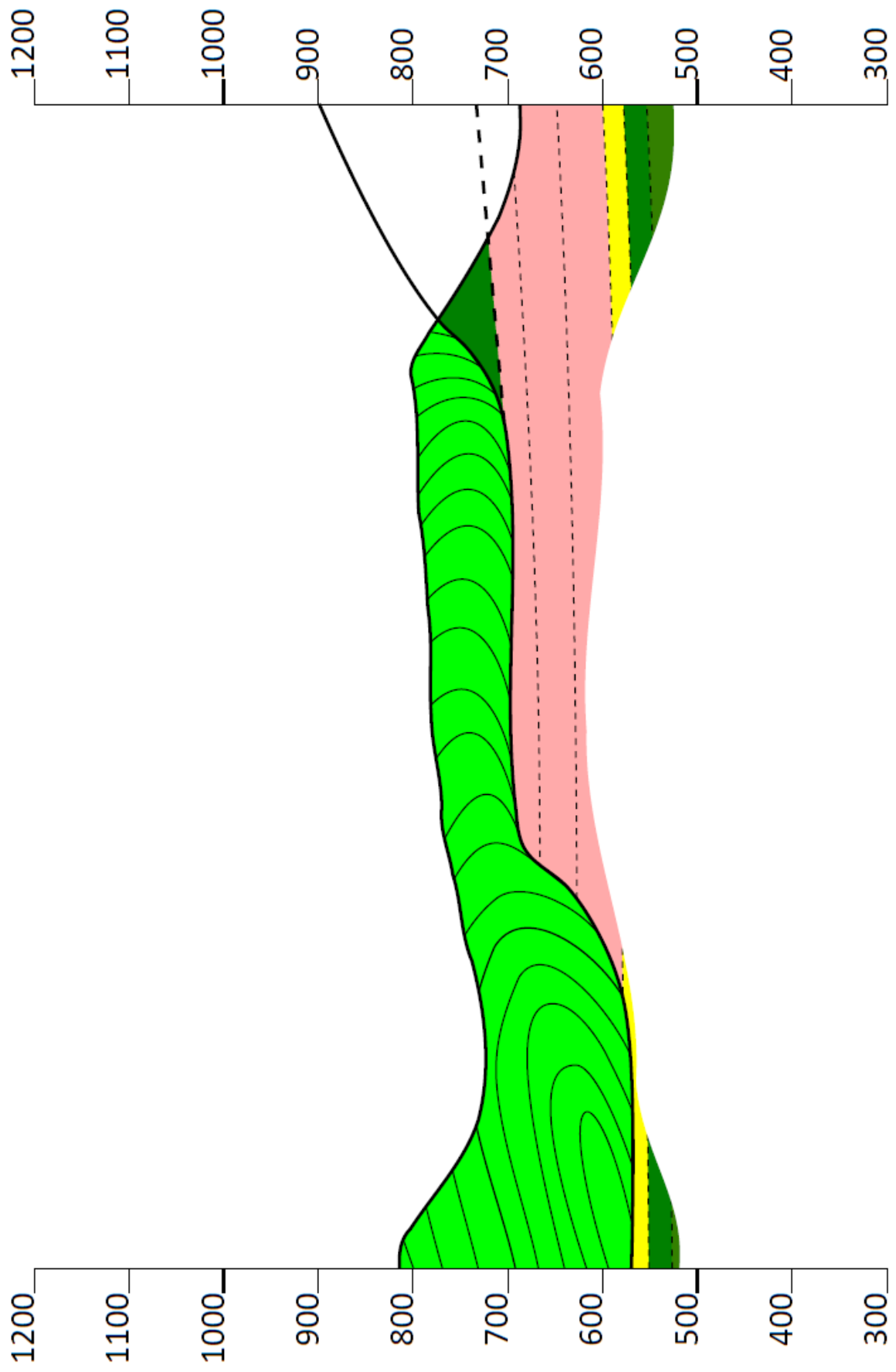
Appendix B1: Cross Section 1



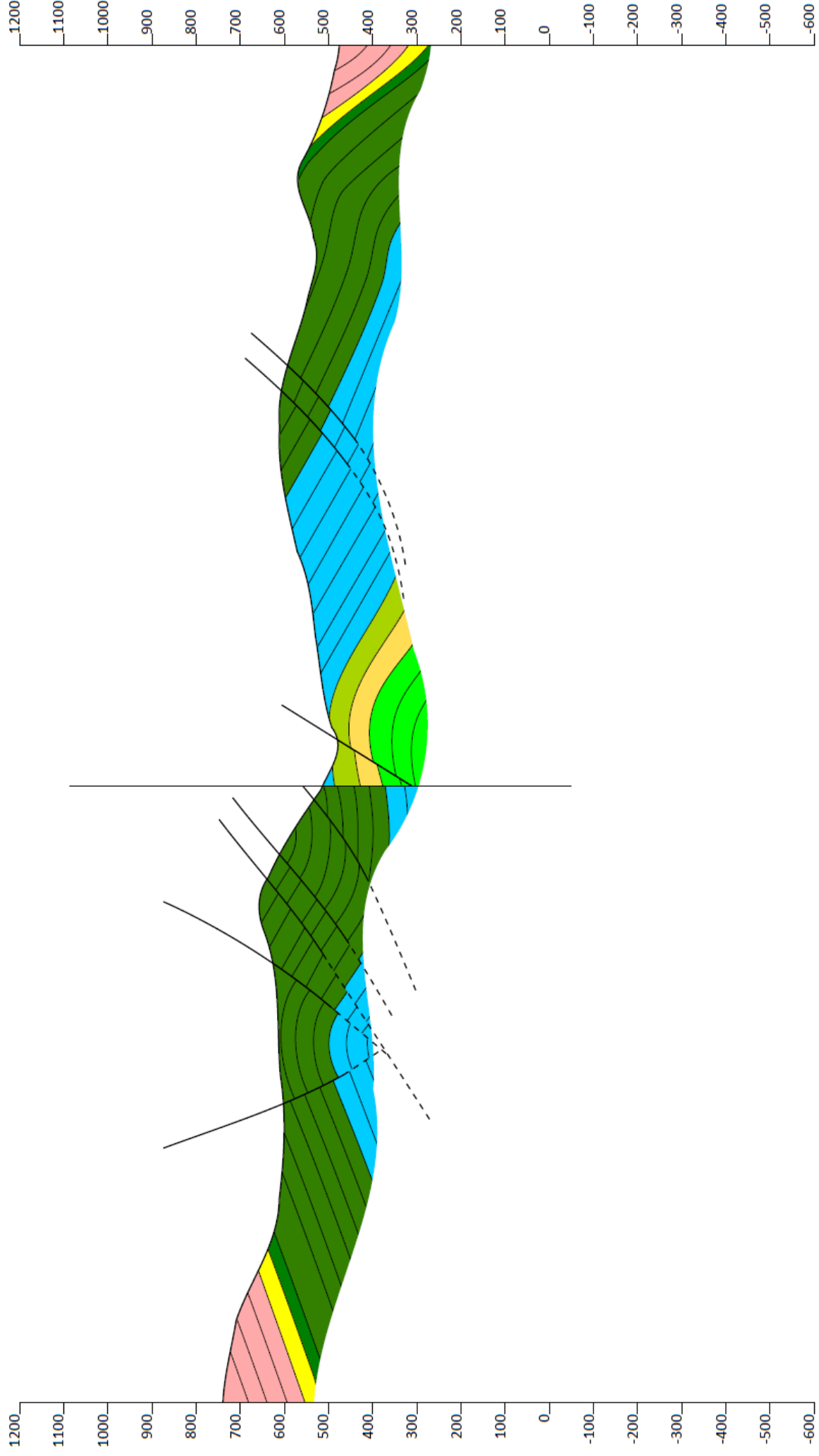
Appendix B2: Cross Section 2



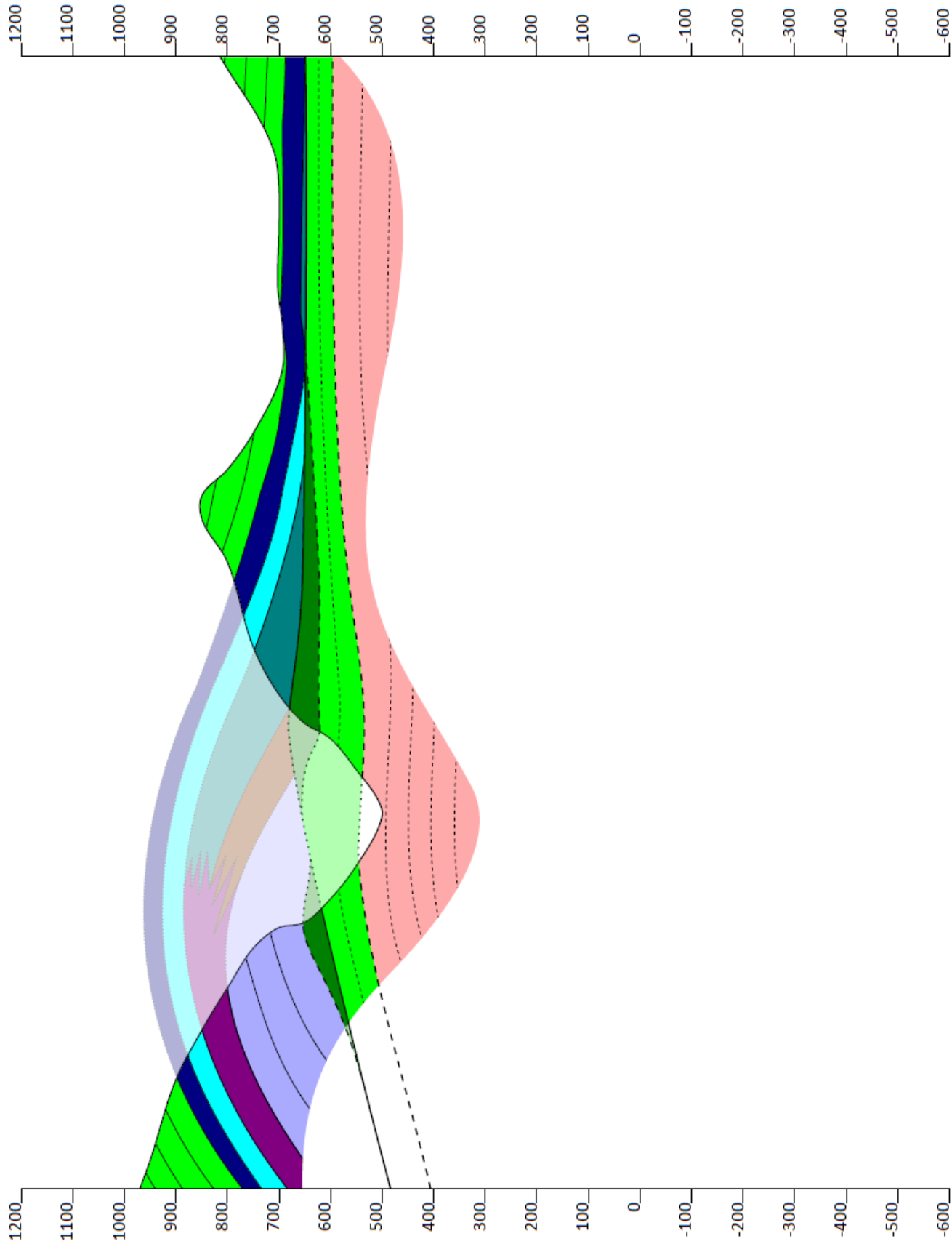
Appendix B3: Cross Section 3



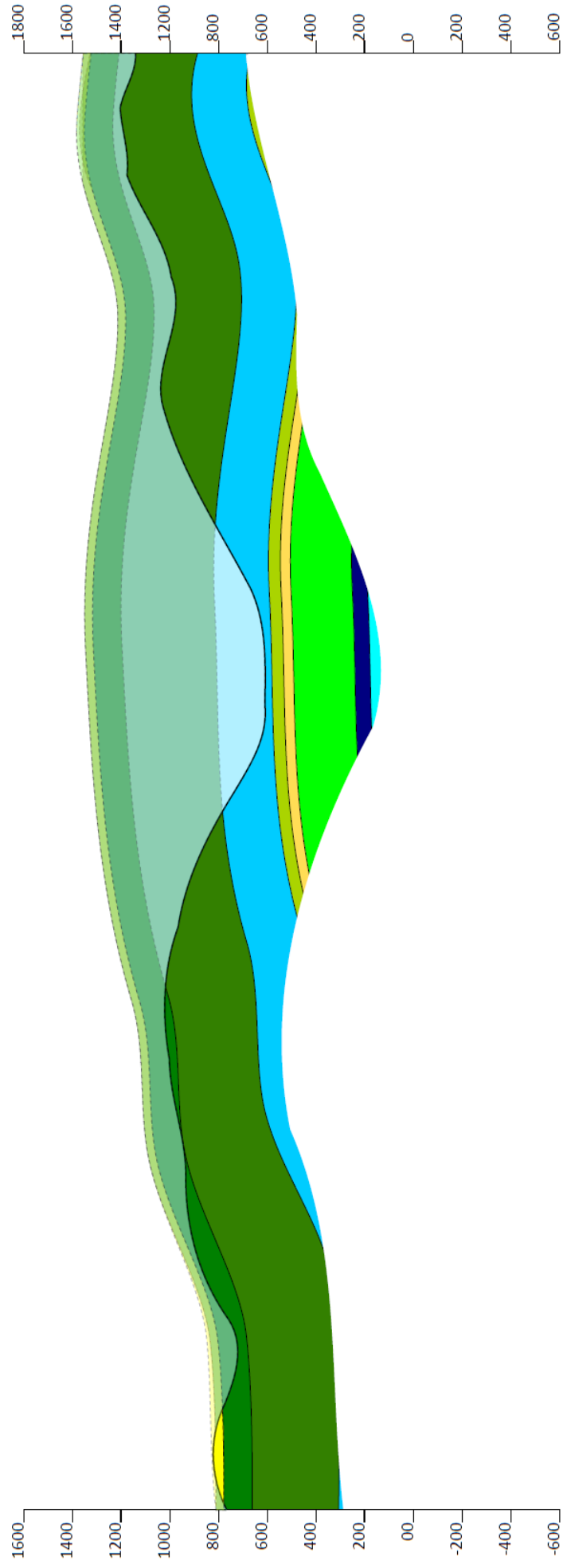
Appendix B4: Cross Section 4



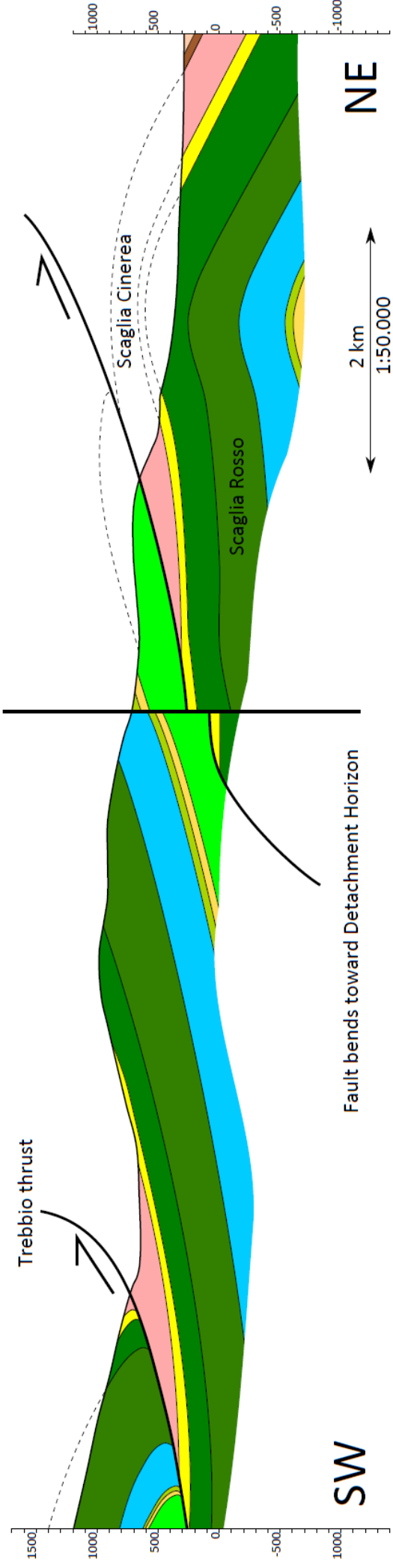
Appendix B5: Cross Section 5



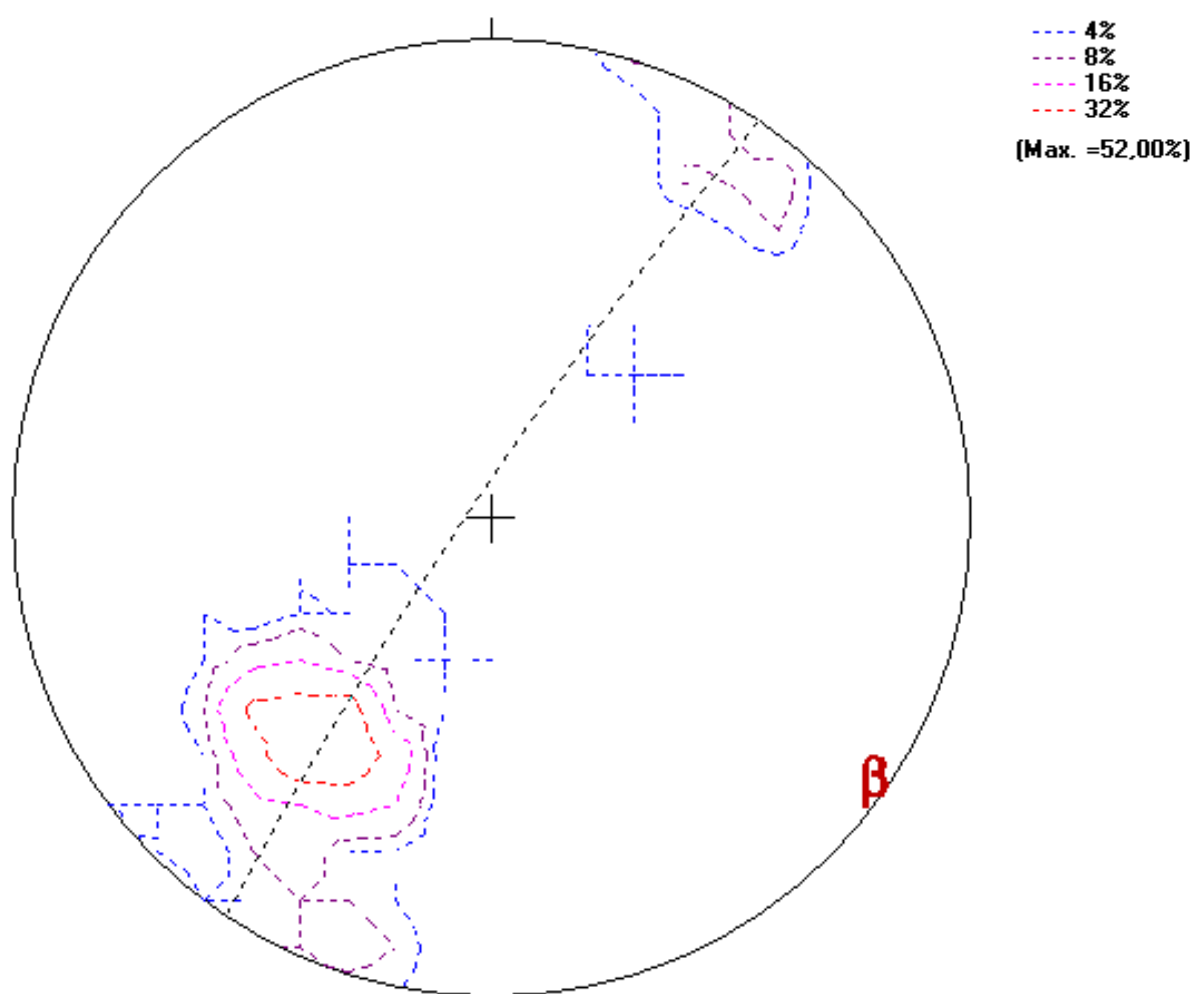
Appendix B6: Cross Section 6



Appendix B7: Cross-section 7



Appendix C.1a - Stereoplot of dome structure



No. of Data = 25

Mean Principal Orientation = 57/036

Mean Resultant direction = 43-035

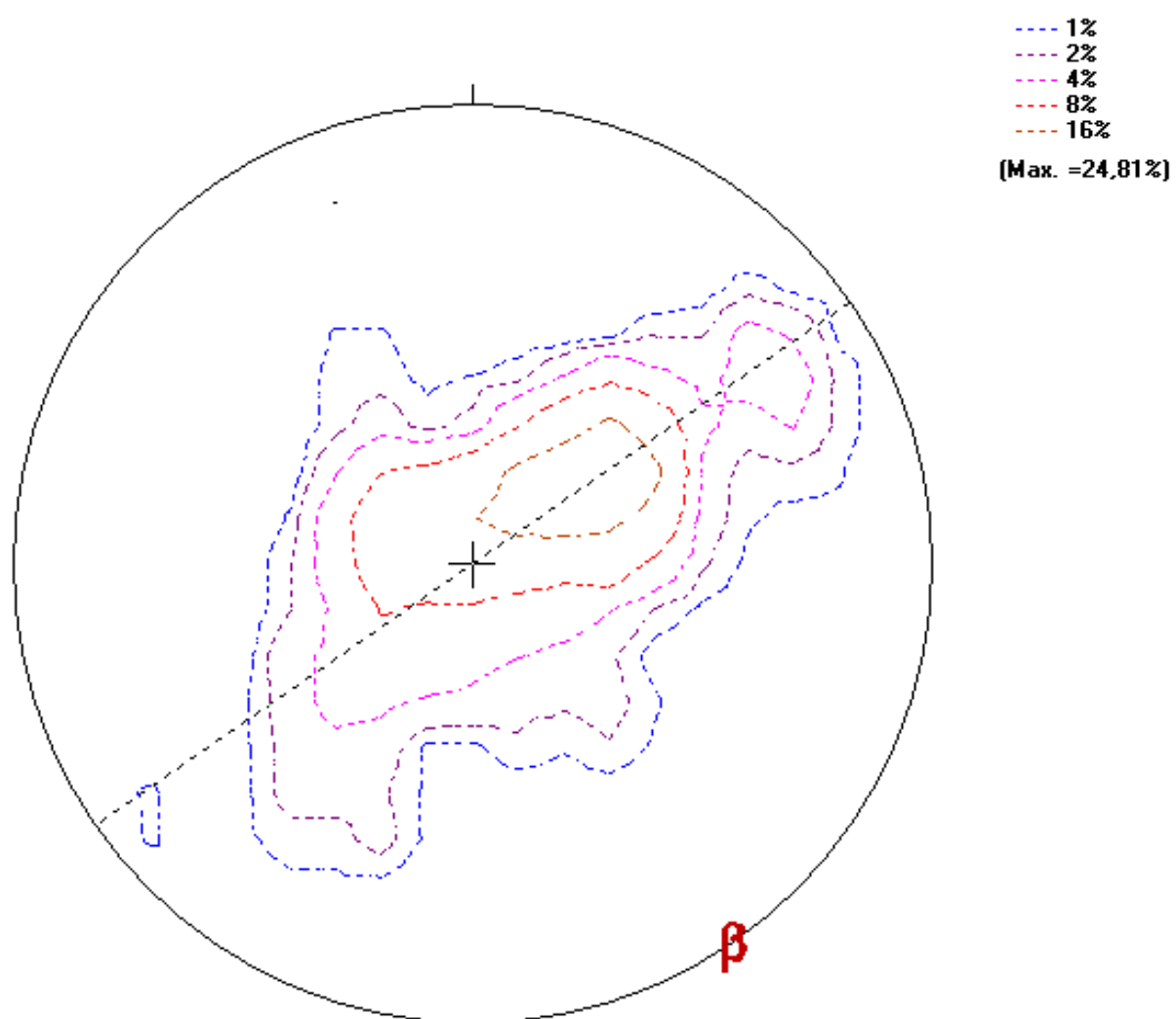
Mean Resultant length = 0,73

(Variance = 0,27)

Calculated. girdle: 86/304

Calculated beta axis: 4-124

Appendix C.1b - Stereoplot of dome structure



No. of Data = 266

Mean Principal Orientation = 12/234

Mean Resultant direction = 11-236

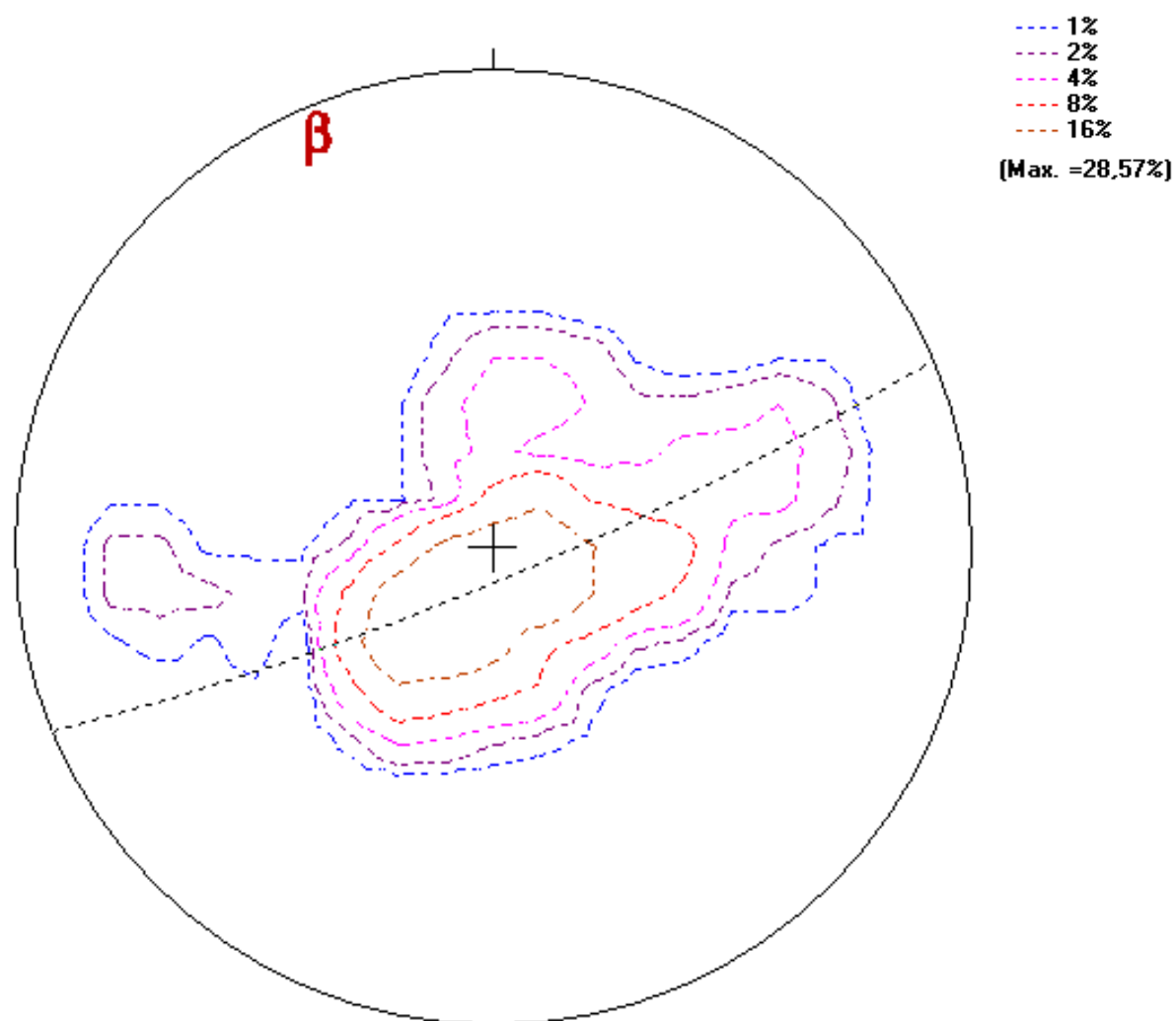
Mean Resultant length = 0,86

(Variance = 0,14)

Calculated. girdle: 90/325

Calculated beta axis: 0-145

Appendix C.1c - Stereoplot of dome structure



No. of Data = 126

Mean Principal Orientation = 6/336

Mean Resultant direction = 5-329

Mean Resultant length = 0,90

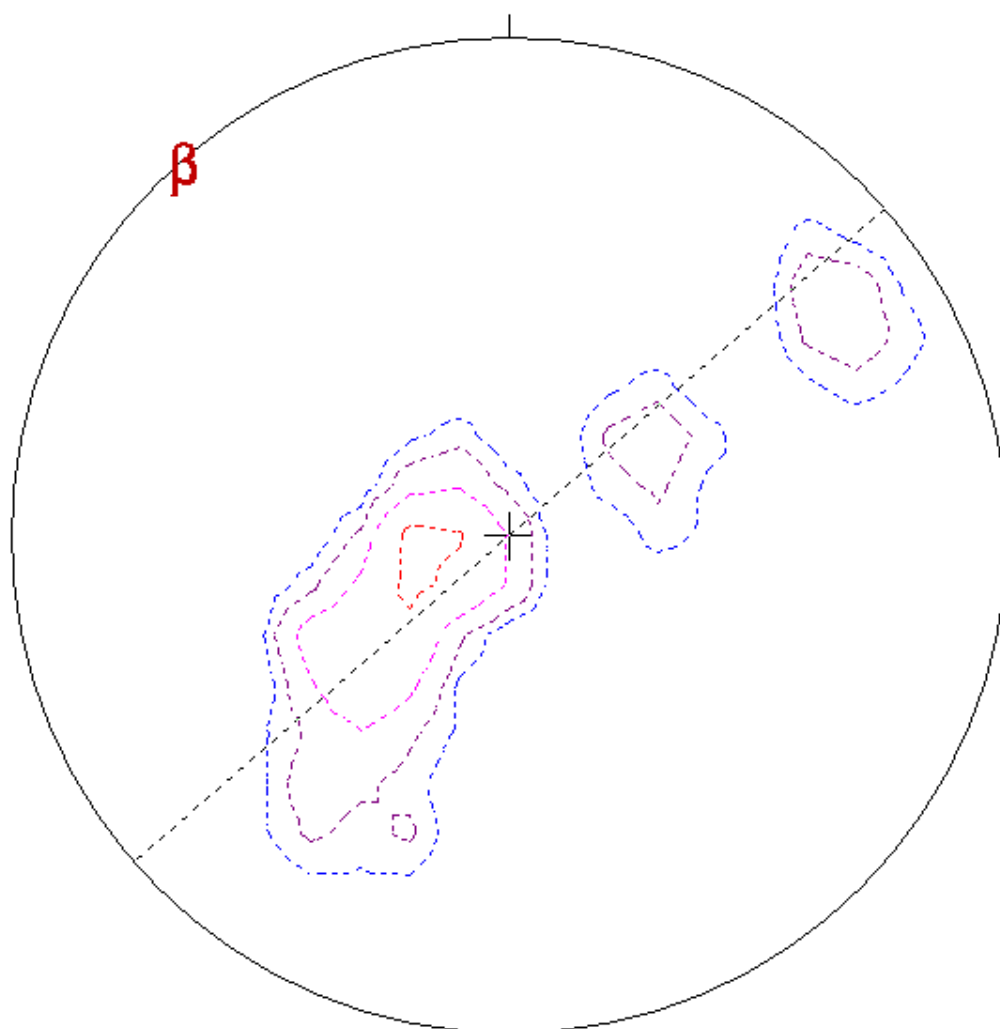
(Variance = 0,10)

Calculated. girdle: 84/157

Calculated beta axis: 6-337

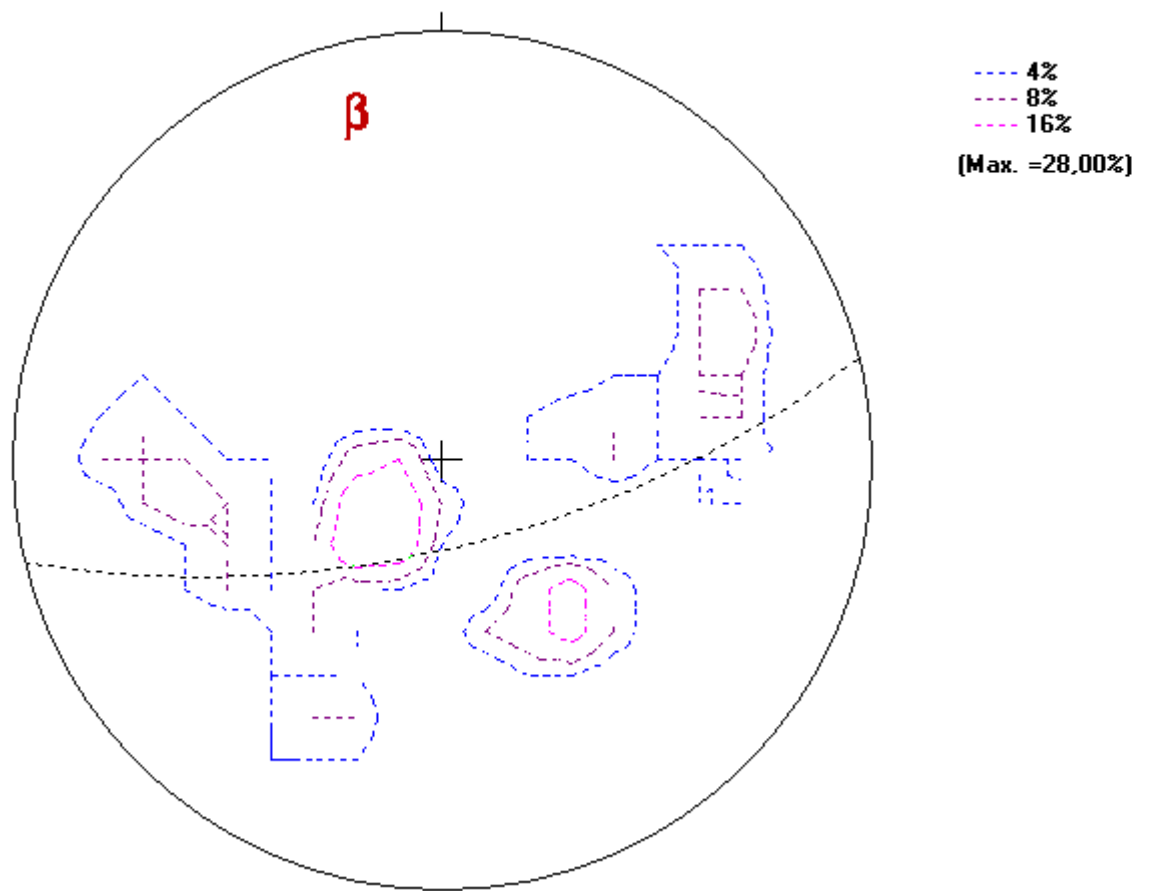
Appendix C.2 - Stereoplot of the Sibillini thrust

--- 4%
--- 8%
--- 16%
--- 32%
(Max. =36,36%)



No. of Data:33
Mean Principal Orientation: 19/049
Mean Resultant direction:10-039
Mean Resultant length: 0,81
(Variance = 0,19)
Calculated. girdle: 90/139
Calculated beta axis: 0-319

Appendix C.3 – Stereoplot of microfolds of group 13 and waypoint 189



No. of Data = 25

Mean Principal Orientation = 18/011

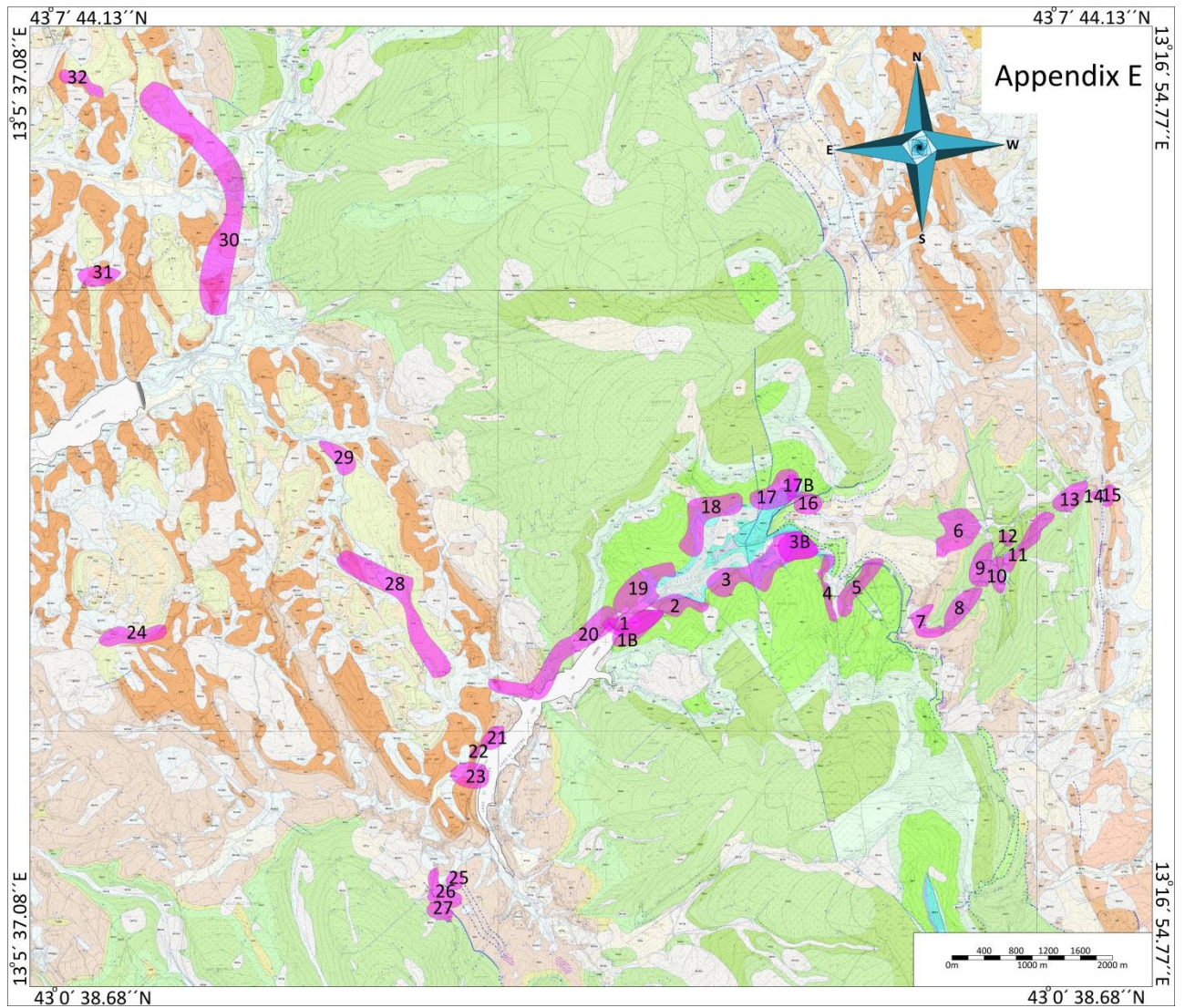
Mean Resultant direction = 14-356

Mean Resultant length = 0,76

(Variance = 0,24)

Calculated. girdle: 73/166

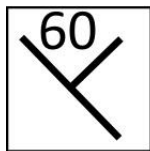
Calculated beta axis: 17-346



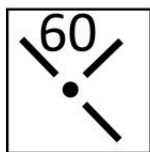
Appendix F1: Legend maps



Waypoint



Bedding plane



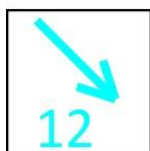
Estimated bedding plane



Fault plane



Unconformity surface



Striation



Fold axis



Fold axis with error range

Appendix F2: Legend Cross Sections

	Schlier
	Bisciario
	Scaglia cinerea
	Scaglia Varlegata
	Scaglia Rossa 3
	Scaglia Rossa 2
	Scaglia rossa 1
	Scaglia bianca
	Marne a fucoide
	Maiolica
	Calcare Diasprini 2
	Calcare Diasprini 1
	Calcares a posidonia
	Rosso amonitico
	Bugarone
	Calcare Massiccio
	Corniola
	Fault
	Continuation of structure above surface

Appendix F3

Map with locations of cross-sections

