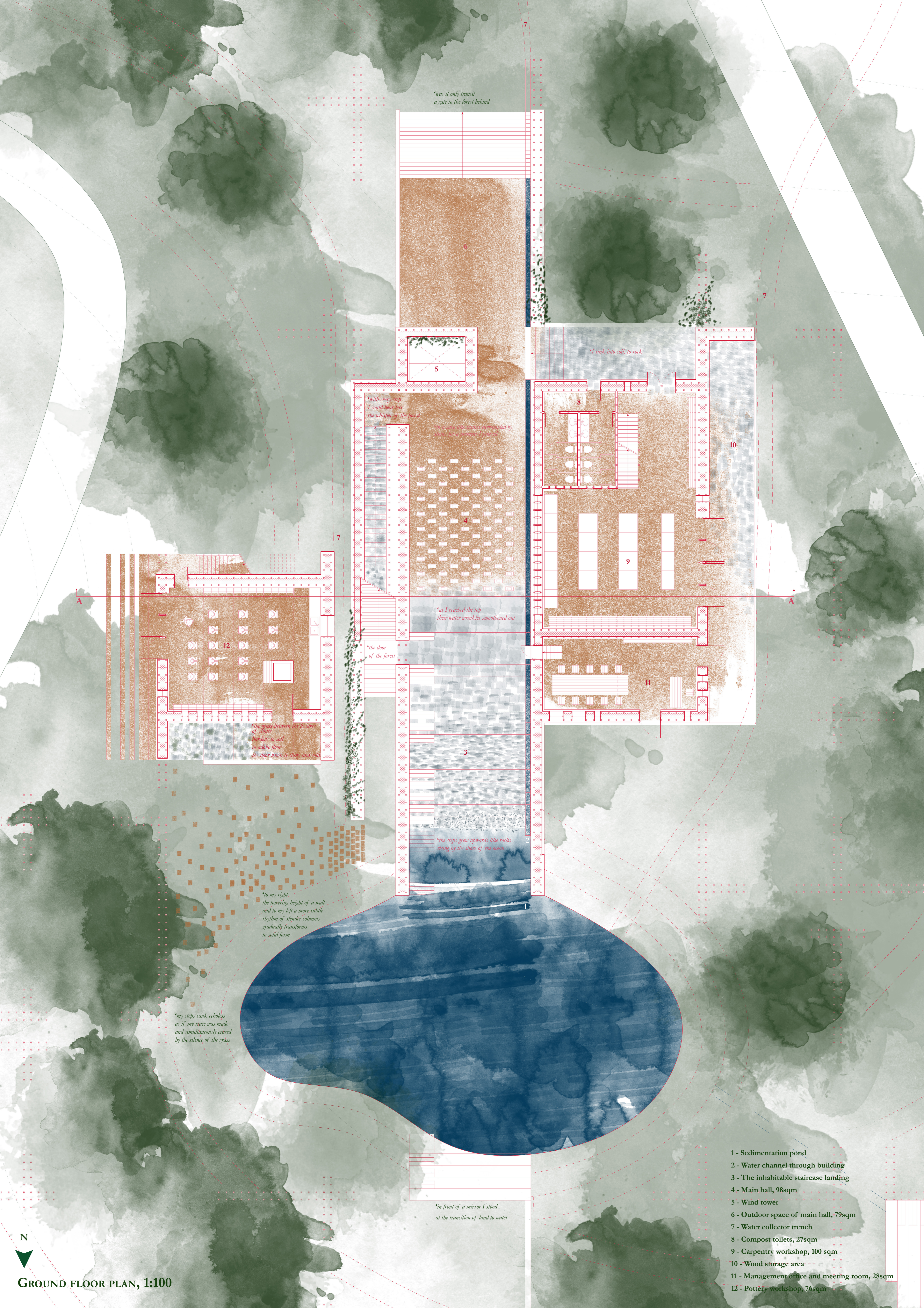


- 1 - Sedimentation pond
- 2 - Water channel covered with walking tiles
- 3 - Upflow roughing filter
- 4 - Natural filtration pond
- 5 - Open air amphitheatre/classroom
- 6 - Fire fighter's water reservoir
- 7 - Firetruck parking plots
- 8 - El Vergel road, infrastructural artillery
- 9 - Market area
- 10 - Water collection trench
- 11 - Infiltration swale
- 12 - Infiltration retention wall

N

AREA PLAN, 1:250



**was it only transit
a gate to the forest behind*

**I sink into soil, to rock*

**with every step
I could hear less
the whisper of the forest*

**in a vast open space surrounded by
steep hills, I looked*

**as I reached the top
their water wrinkles smoothed out*

**the door
of the forest*

**the grass between the fissures
of stones
hardens to soil
to adobe floor
the door knob is shiny and cold*

**to my right
the towering height of a wall
and to my left a more subtle
rhythm of slender columns
gradually transforms
to solid form*

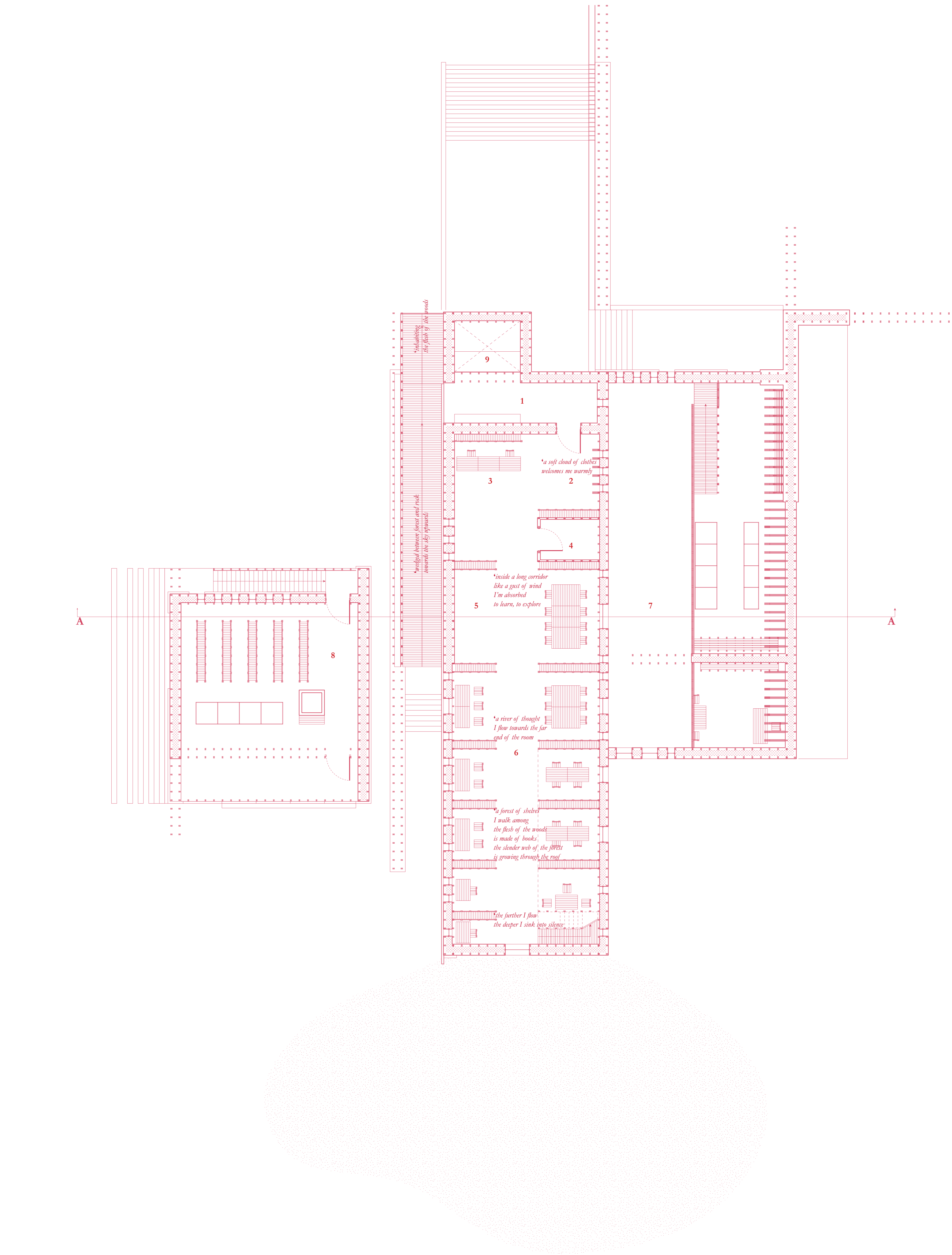
**my steps sank echoless
as if my trace was made
and simultaneously erased
by the silence of the grass*

**in front of a mirror I stood
at the transition of land to water*

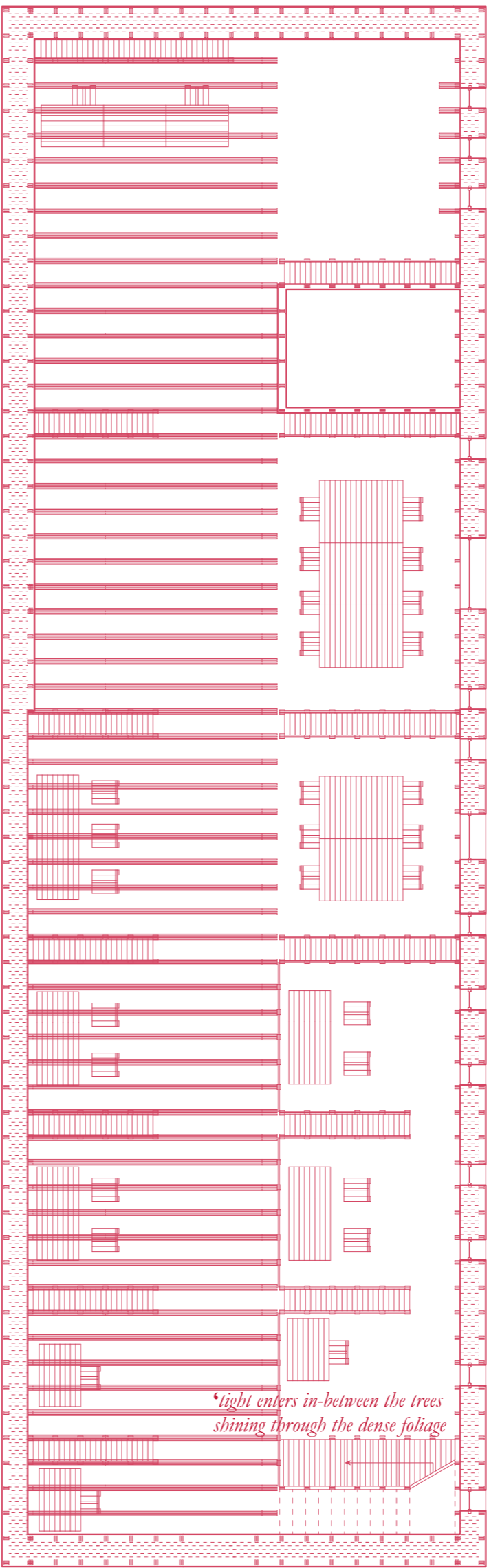
- 1 - Sedimentation pond
- 2 - Water channel through building
- 3 - The inhabitable staircase landing
- 4 - Main hall, 98sqm
- 5 - Wind tower
- 6 - Outdoor space of main hall, 79sqm
- 7 - Water collector trench
- 8 - Compost toilets, 27sqm
- 9 - Carpentry workshop, 100 sqm
- 10 - Wood storage area
- 11 - Management office and meeting room, 28sqm
- 12 - Pottery workshop, 76sqm

N

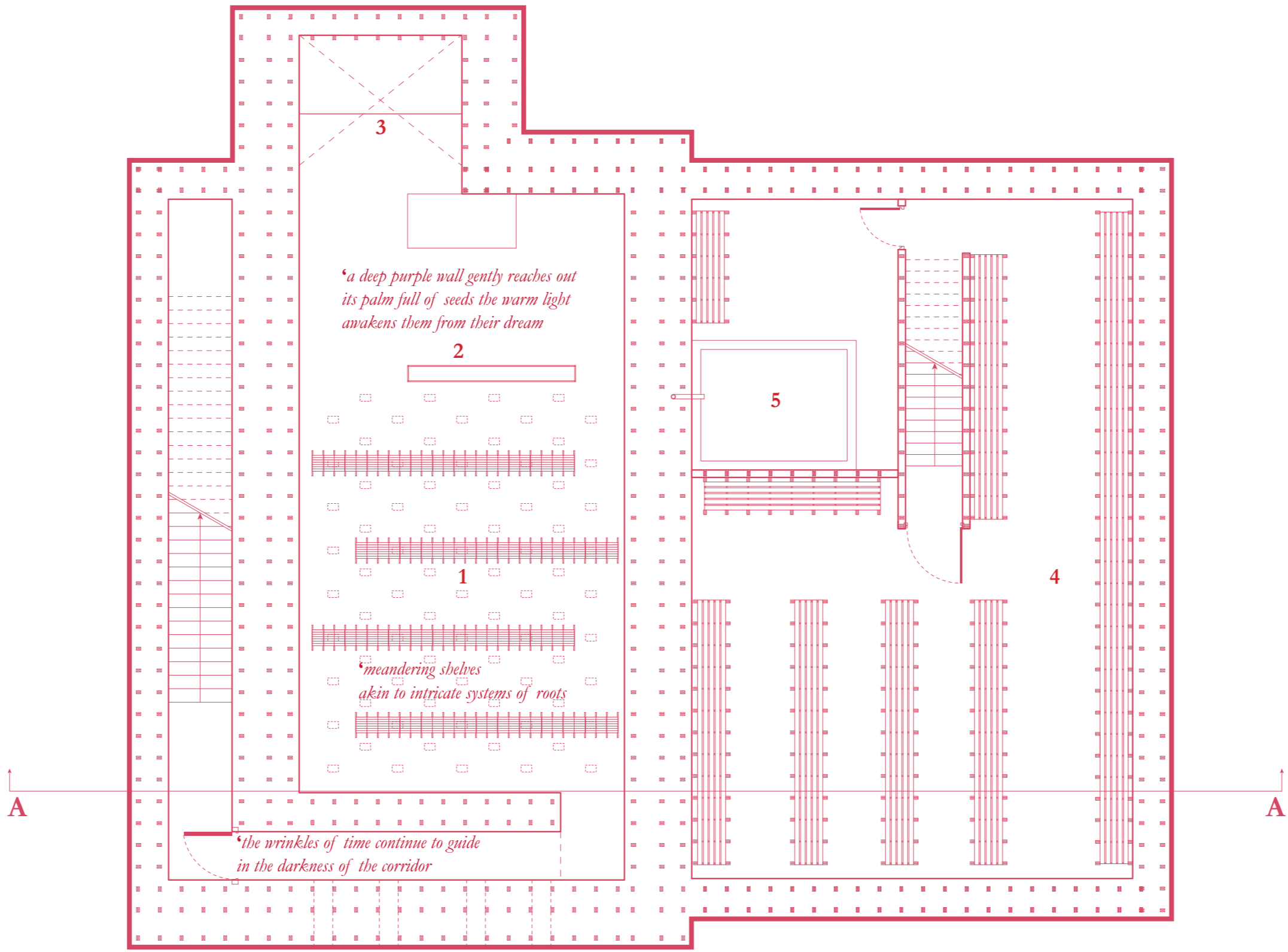
GROUND FLOOR PLAN, 1:100



- 1 - Library semi-outdoor entry hall, 19sqm
- 2 - Library arrival hall with cloth hangers, 16sqm
- 3 - Librarian desk
- 4 - Storage, 8sqm
- 5 - Bay with possibility of projecting onto wall
- 6 - Library main space, 180sqm
- 7 - Exhibition balcony, 98sqm
- 8 - Pottery workshop glazing-drying area, 76sqm
- 9 - Wind tower, 10sqm



LIBRARY BALCONY, 1:100



BASEMENT, 1:100

- 1 - Seed library main space, 64sqm
- 2 - Seed cleaning and selection area, 30sqm
- 3 - Wind tower for passive cooling, 10sqm
- 4 - Storage, 105sqm
- 5 - Toilet collection area with compost tank, 27sqm