



# A PUBLIC VILLA FOR REHABILITATION

P5 presentation  
MSc3/4 Interiors, Buildings and Cities  
Bart van der Zalm  
07-11-2013

a rehabilitation center on the edge of  
Rotterdam's Museumpark reimagined

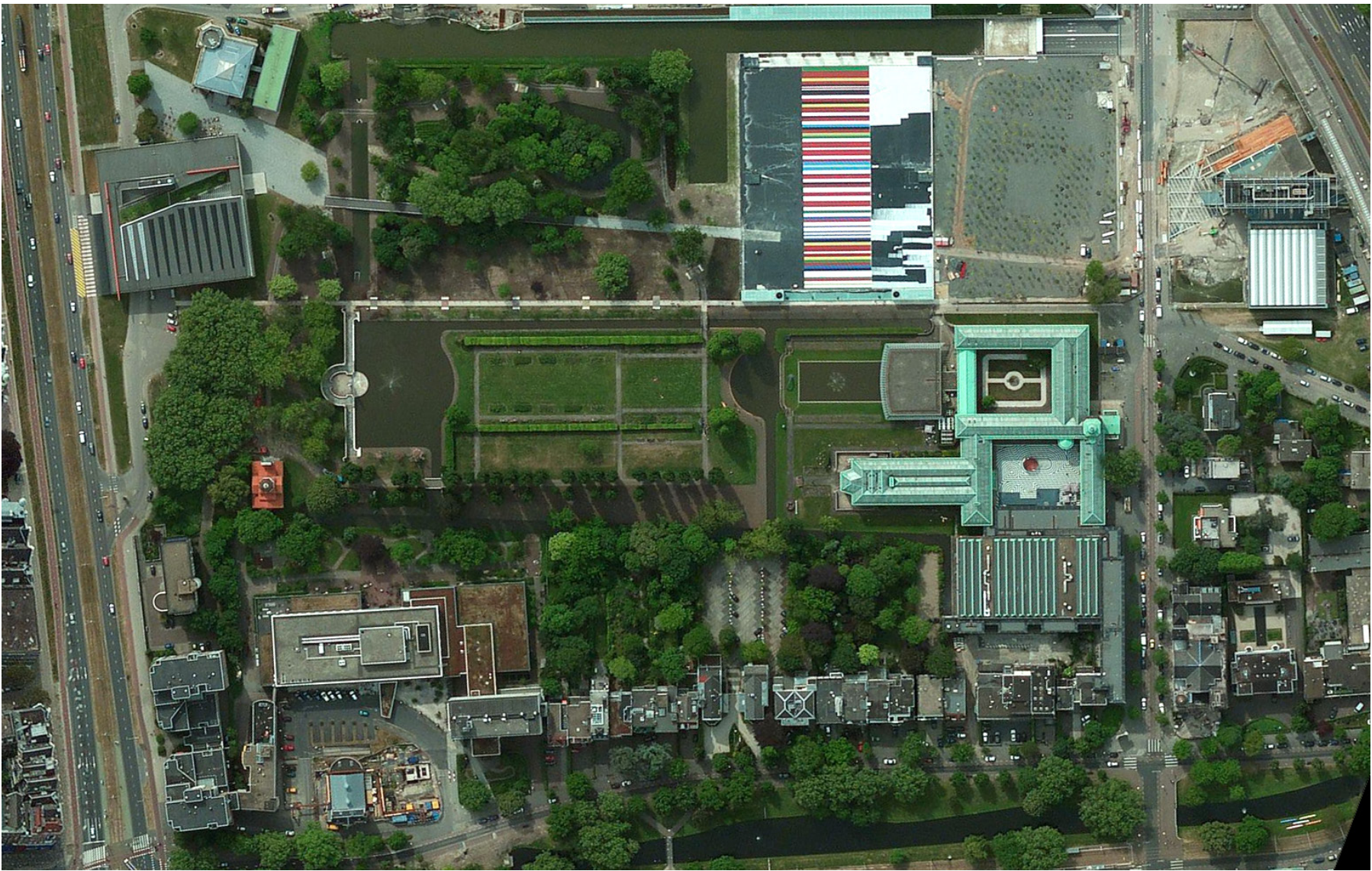








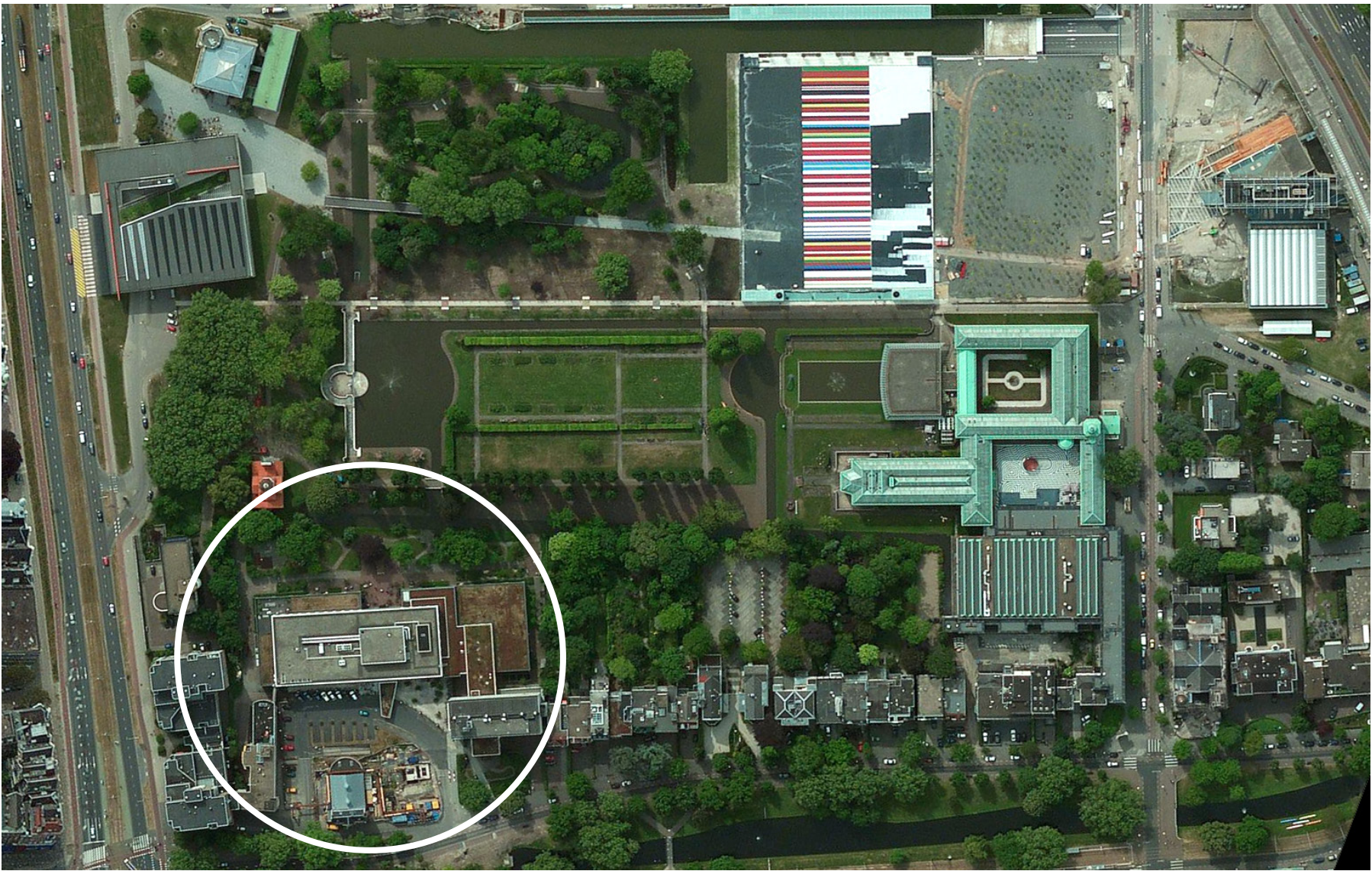
~~a rehabilitation center on~~ the edge of  
Rotterdam's Museumpark reimagined



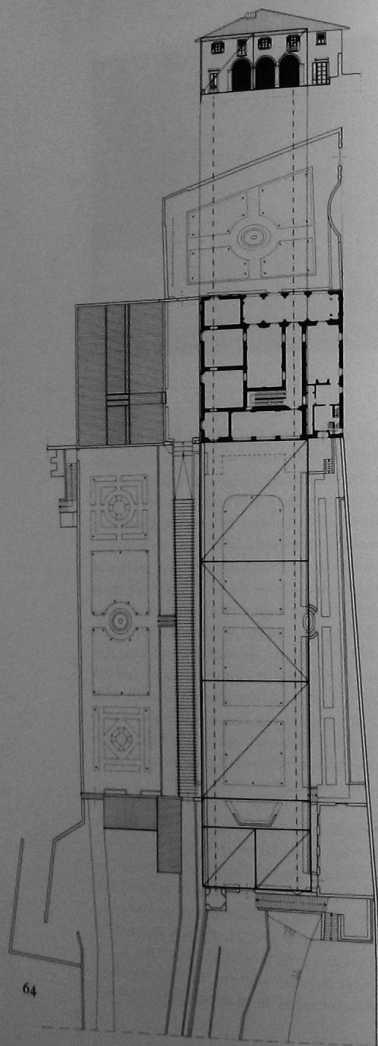






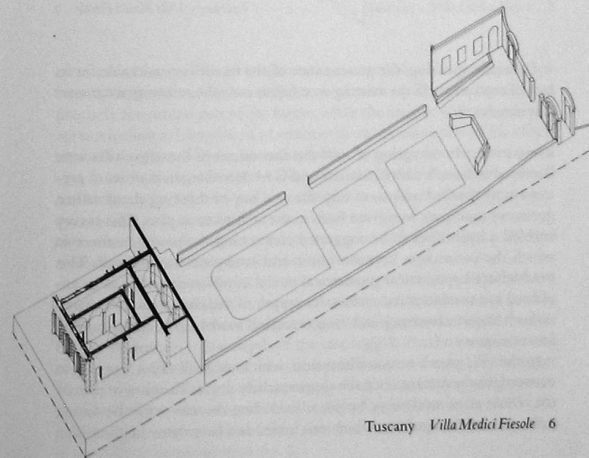






levels are only connected to each other inside the house. A long staircase consisting of a single flight drops one storey from the corridor to the level at which the garden rooms on the south façade are situated. The narrow terrace in front of this, the west terrace, and the rest of the basement, together form an intermediate level situated roughly halfway between the highest and lowest terraces. On this level there are large French windows in the south façade. In the west façade of the basement there are only small windows. It is striking that the ceremonial entrance to the villa in the west façade is not directly connected to the *piano nobile*. The north-east part of the basement is carved out of the rock and consists of storage space linked to the kitchen by means of a service staircase.

On the *piano nobile* is what is now the most commonly used entrance to the house, underneath the east loggia. A long off-centre corridor leads from there directly to the west loggia. The central position in the floor plan is occupied by the rectangular salon. North of the corridor are the dining room and the kitchen. The latter is connected by a service staircase to an intermediate floor above it and, subsequently, to the second floor of the villa. The façades of the *piano nobile* are determined primarily by the loggias. The north façade is closed, apart from a few high windows and a small service entrance. The second floor of the house consists mainly of bedrooms. Above the dining room and the kitchen, adjacent to the intermediary floor beneath, are separate living quarters for the servants. On this floor all the façades are defined by fairly small, identical windows. Several windows have been bricked up from the inside.





Villa de Medici (1451-57) Michelozzo



Villa de' Medici, Florence (1451-57) Michelozzo

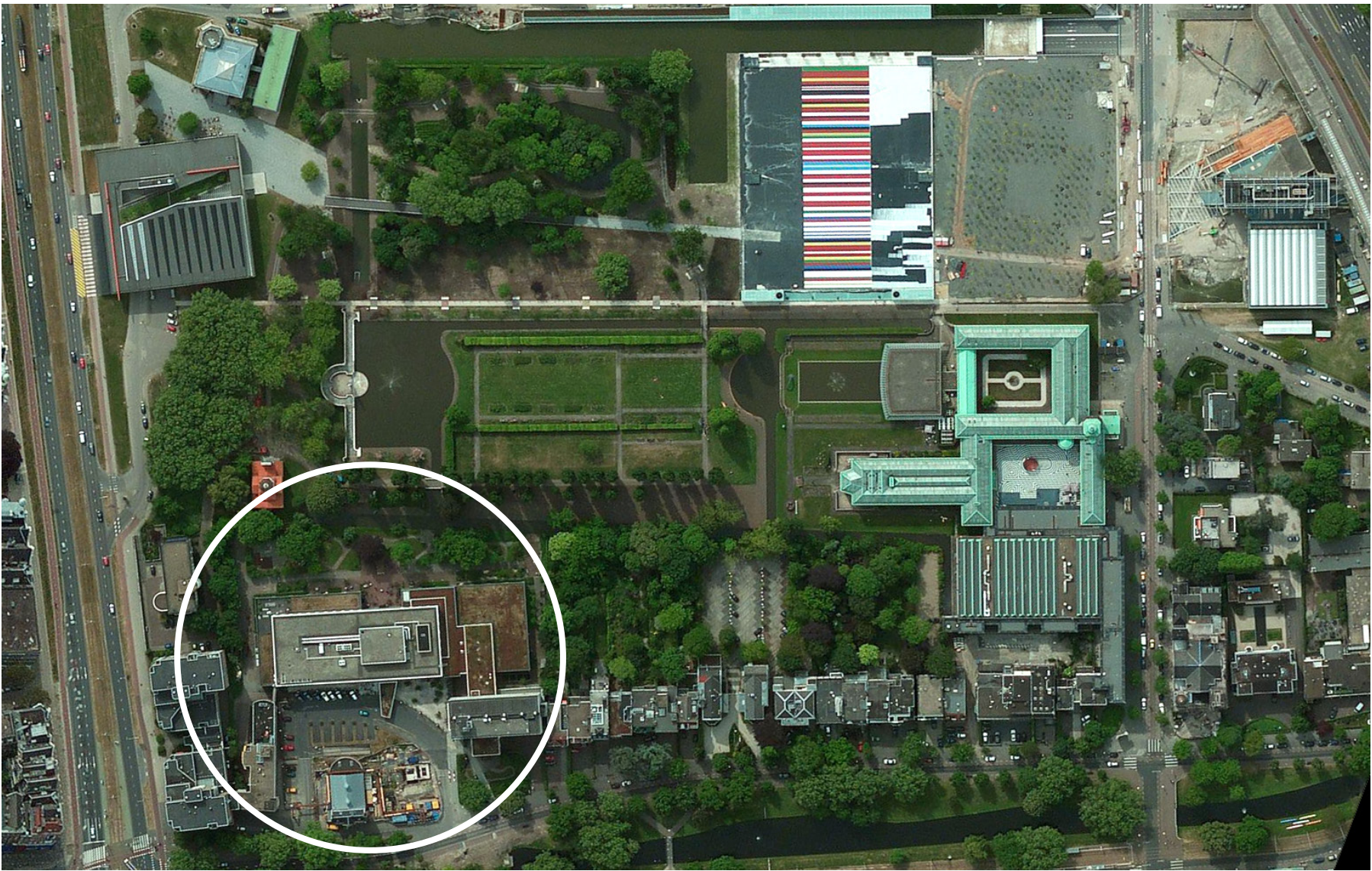


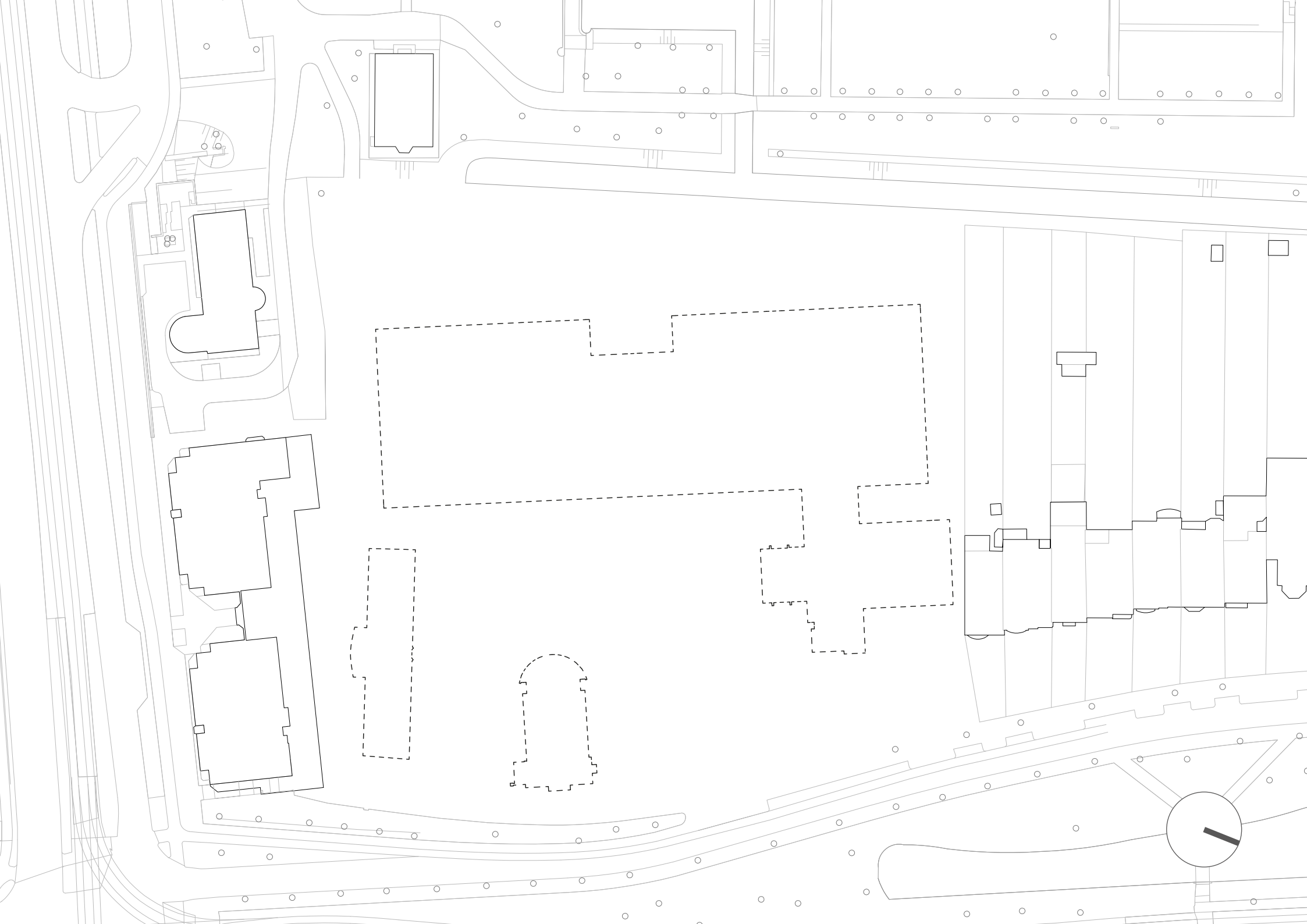
Het Witte Huis, Rotterdam (1897-98)

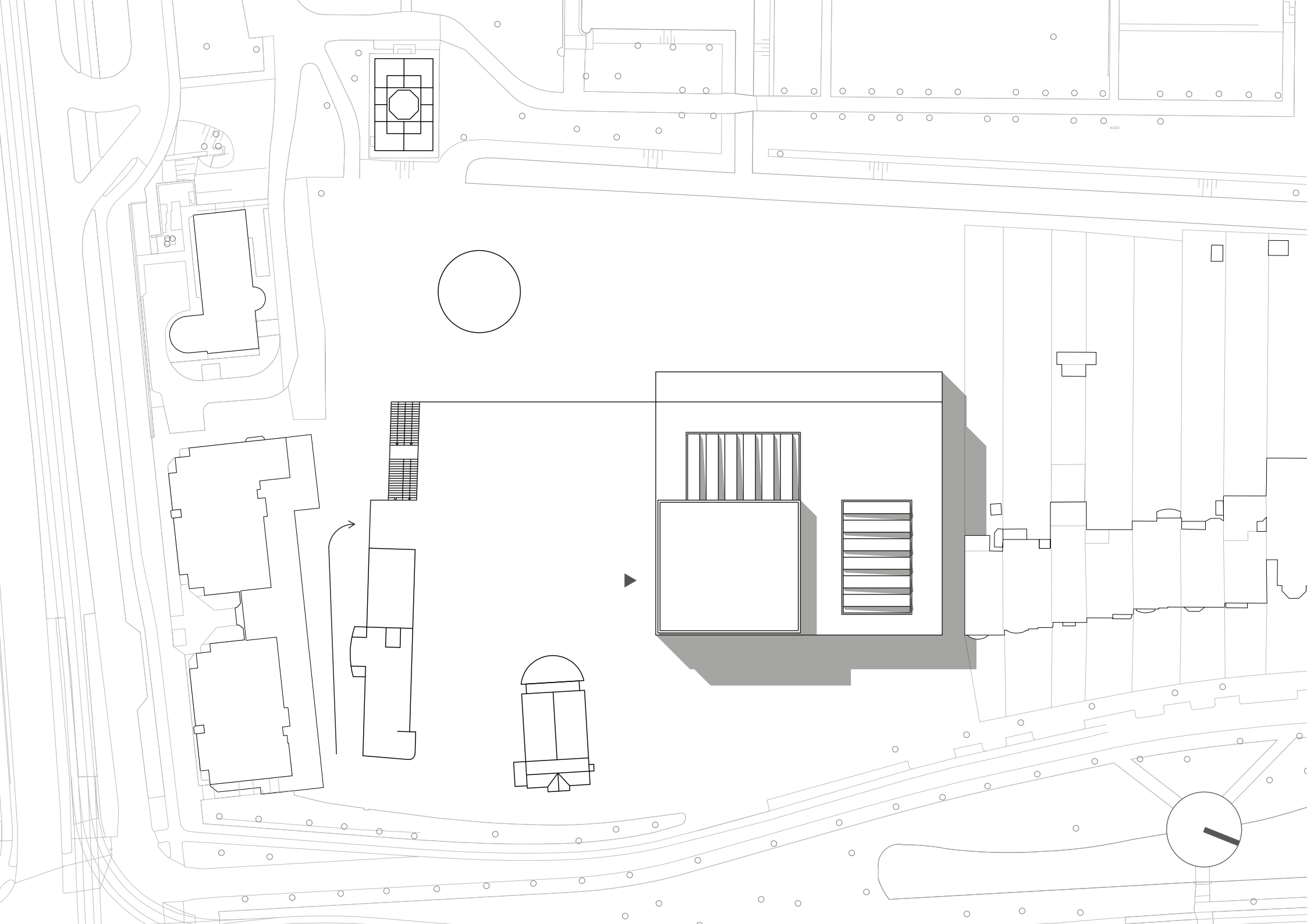


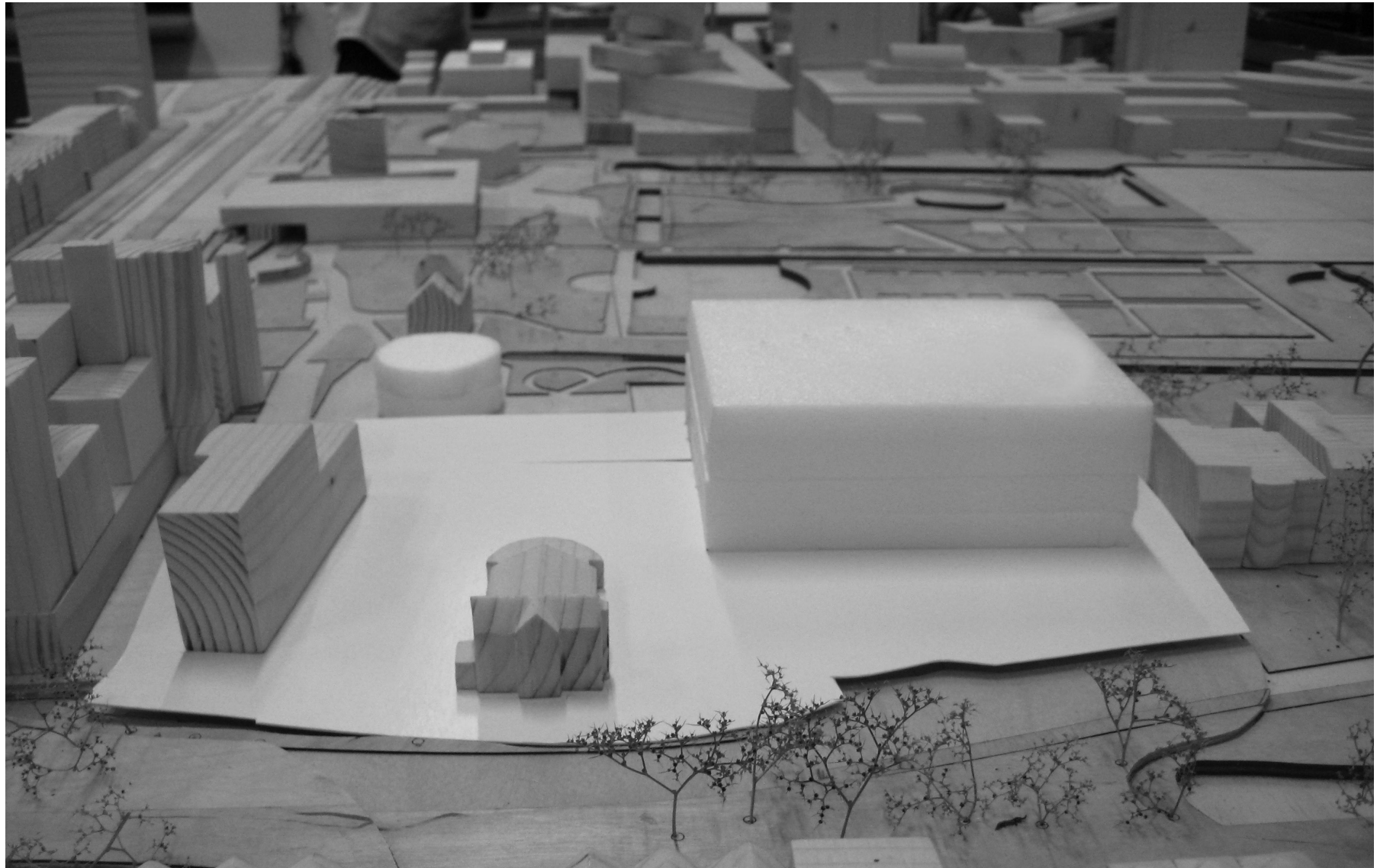


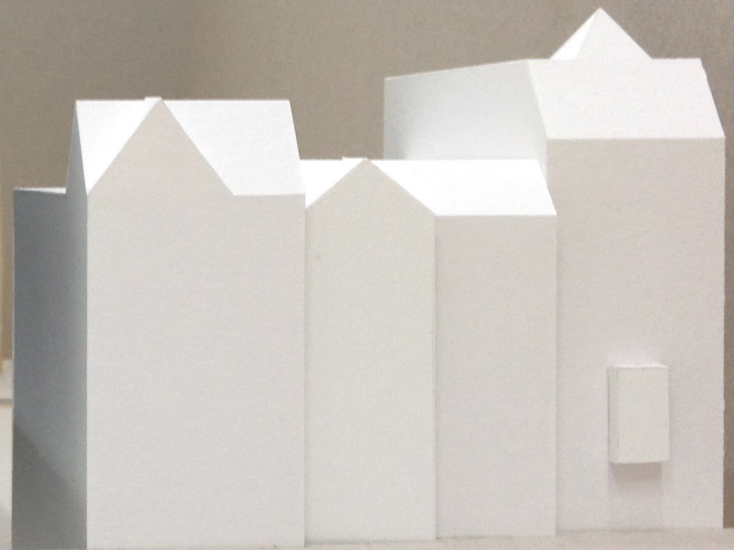
New Art Gallery, Walsall (1995-2000) Caruso St John

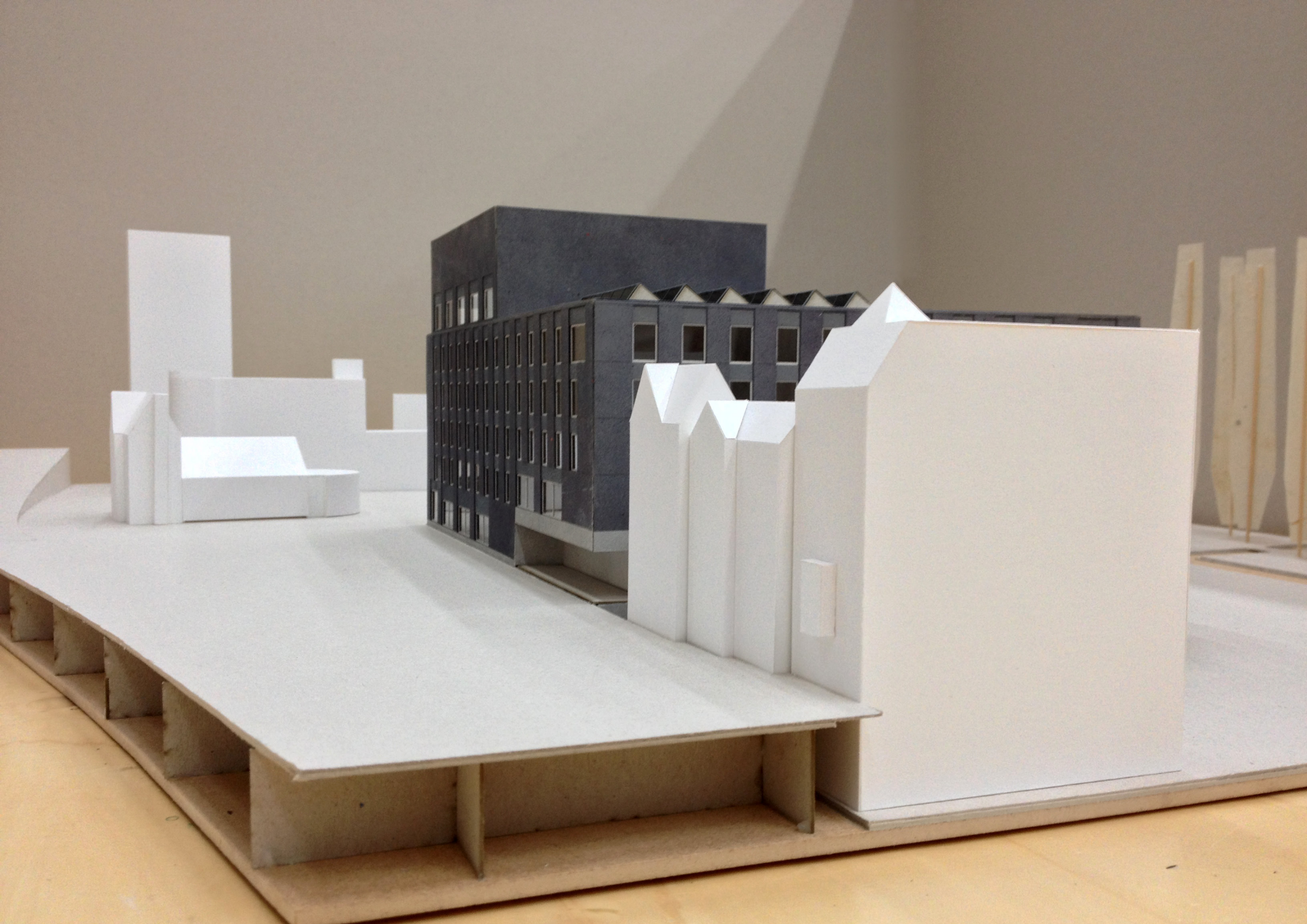


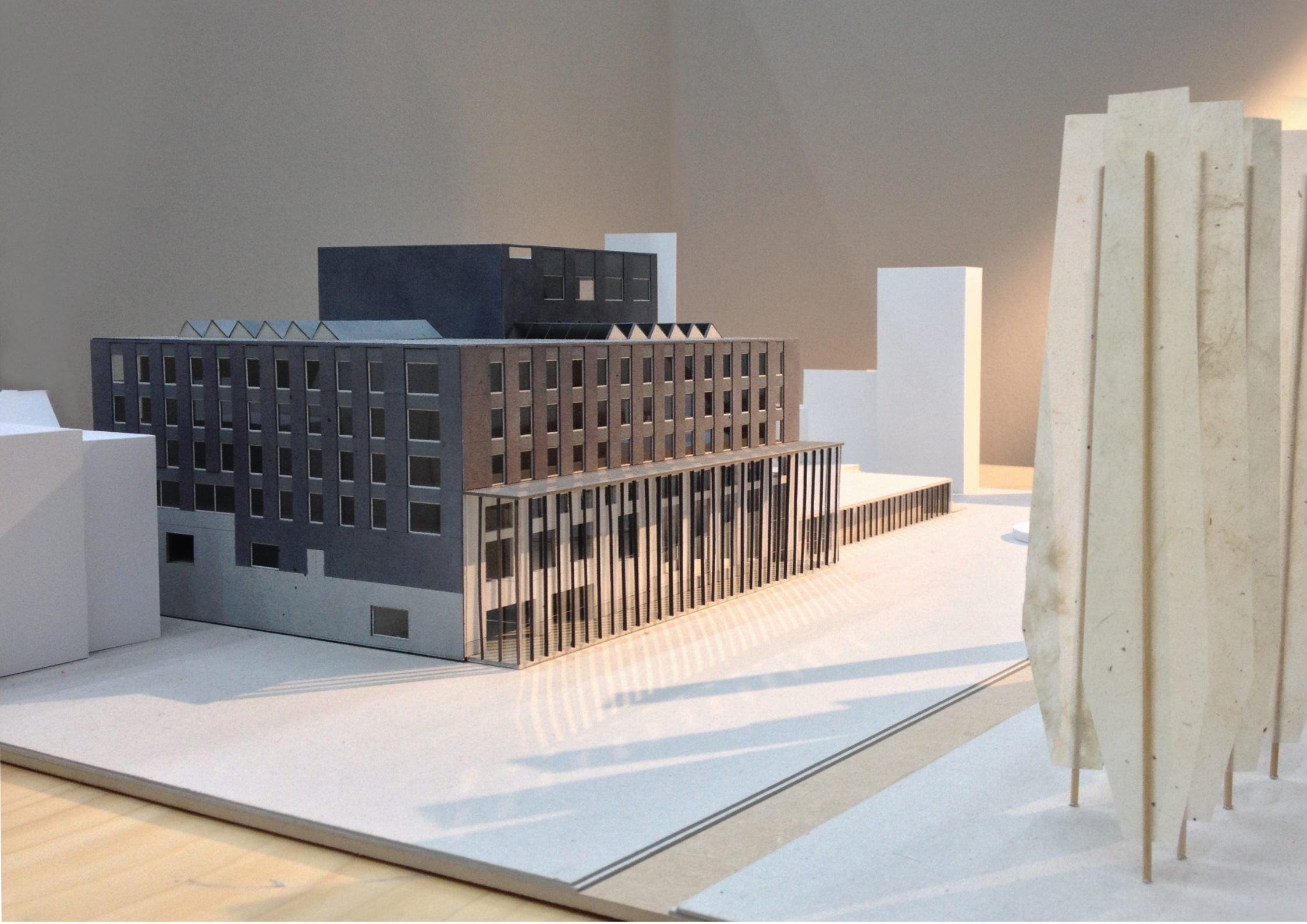




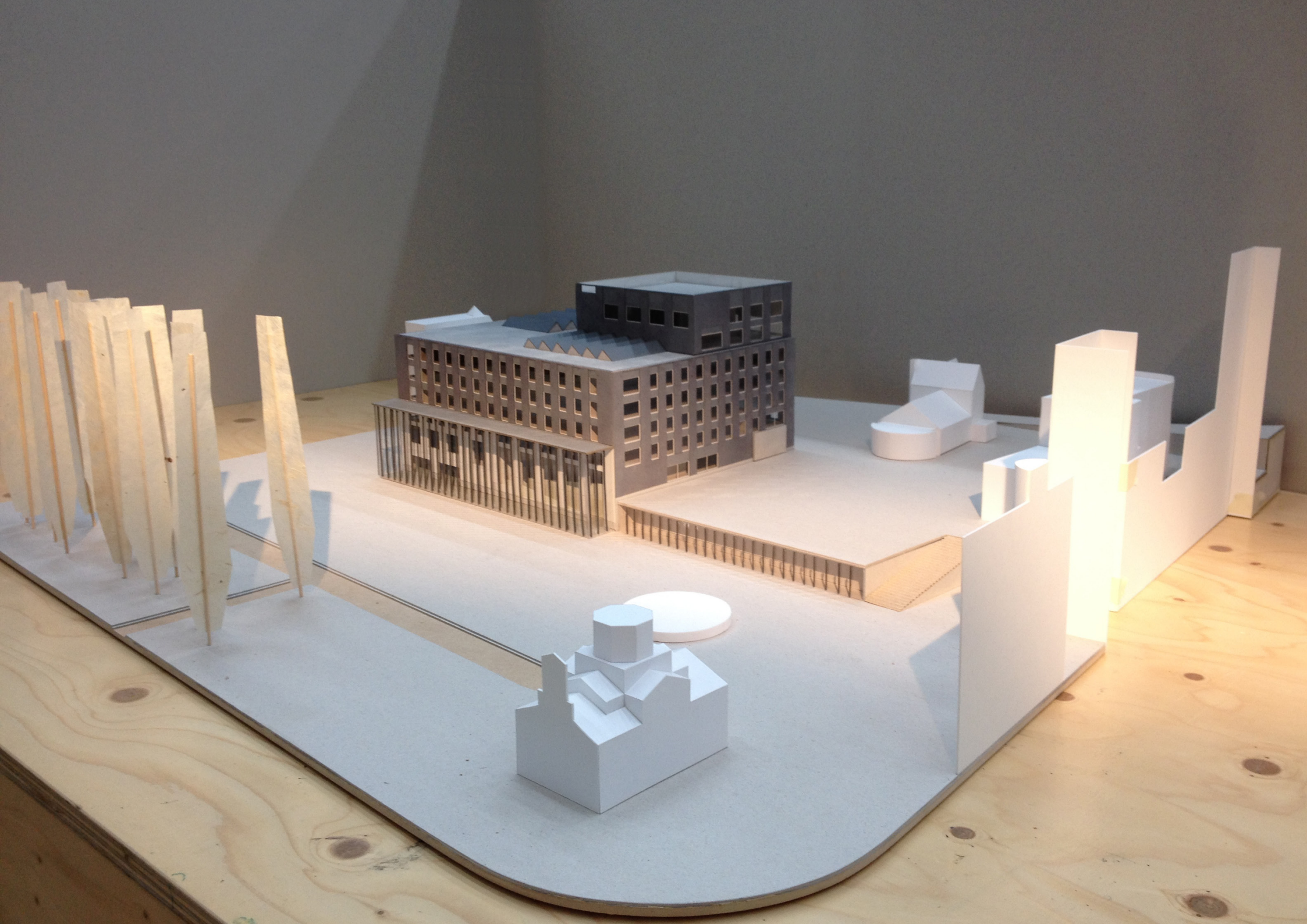




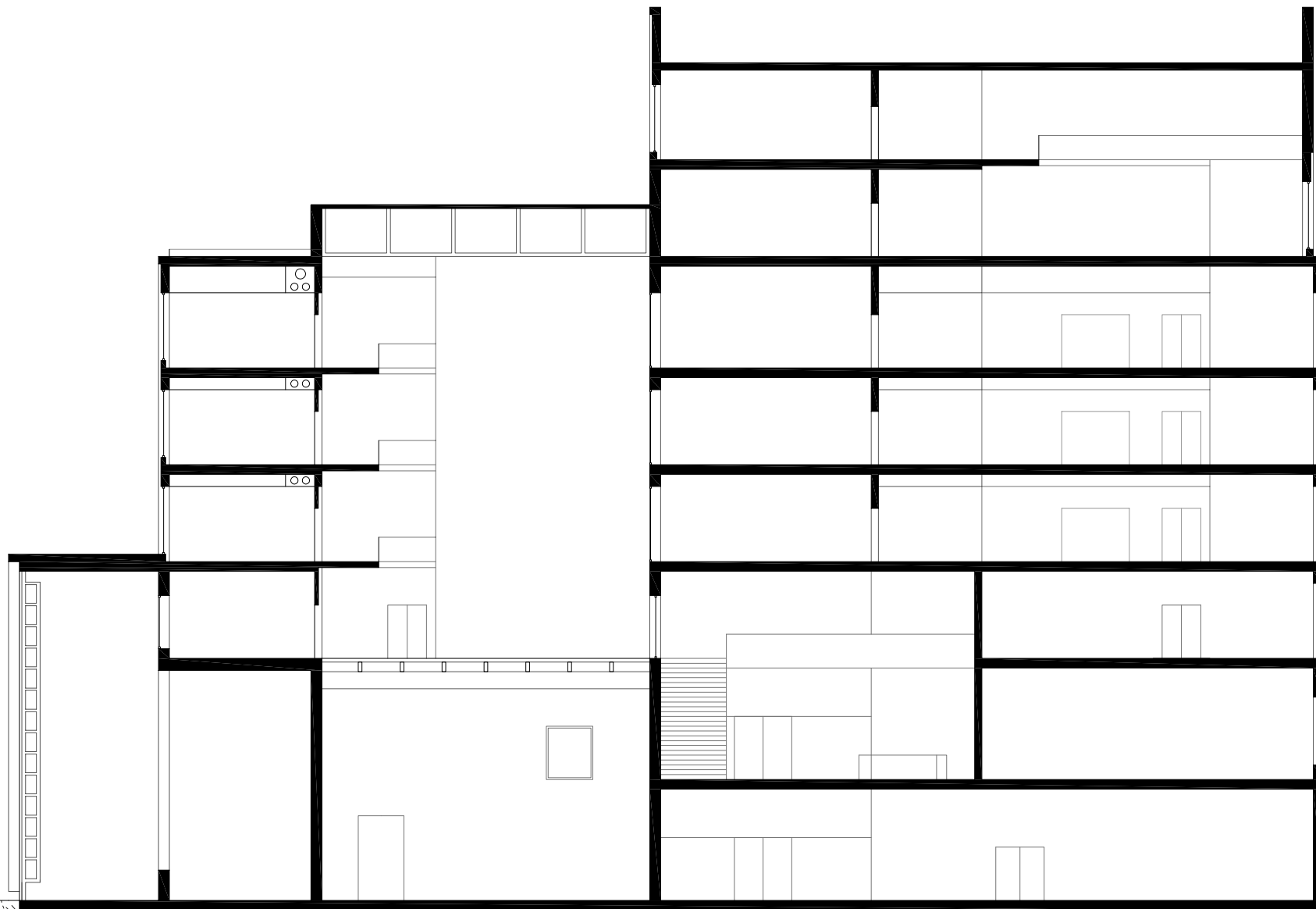


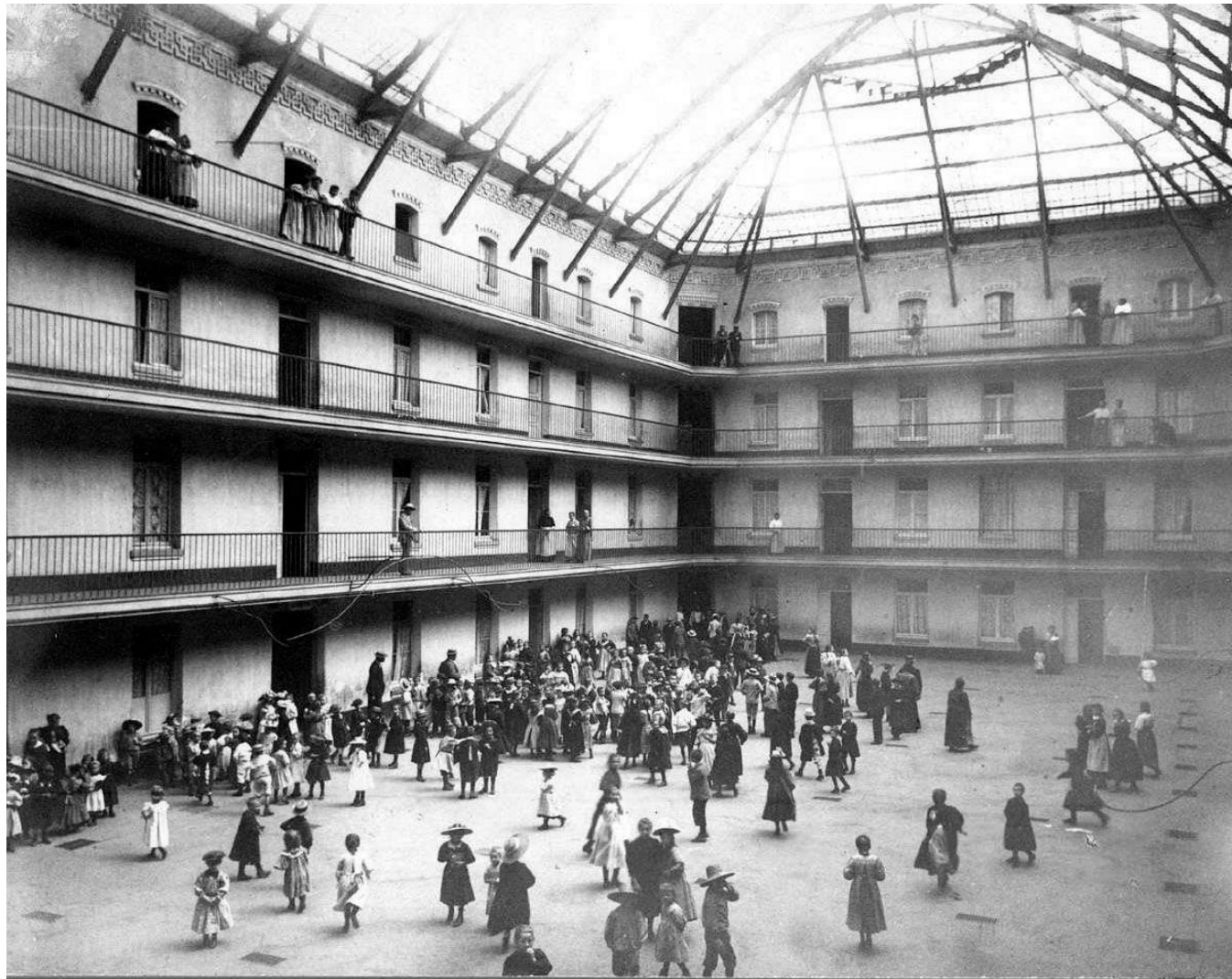












Familistère, Guise (1858-83) Jean-Baptiste André Godin



