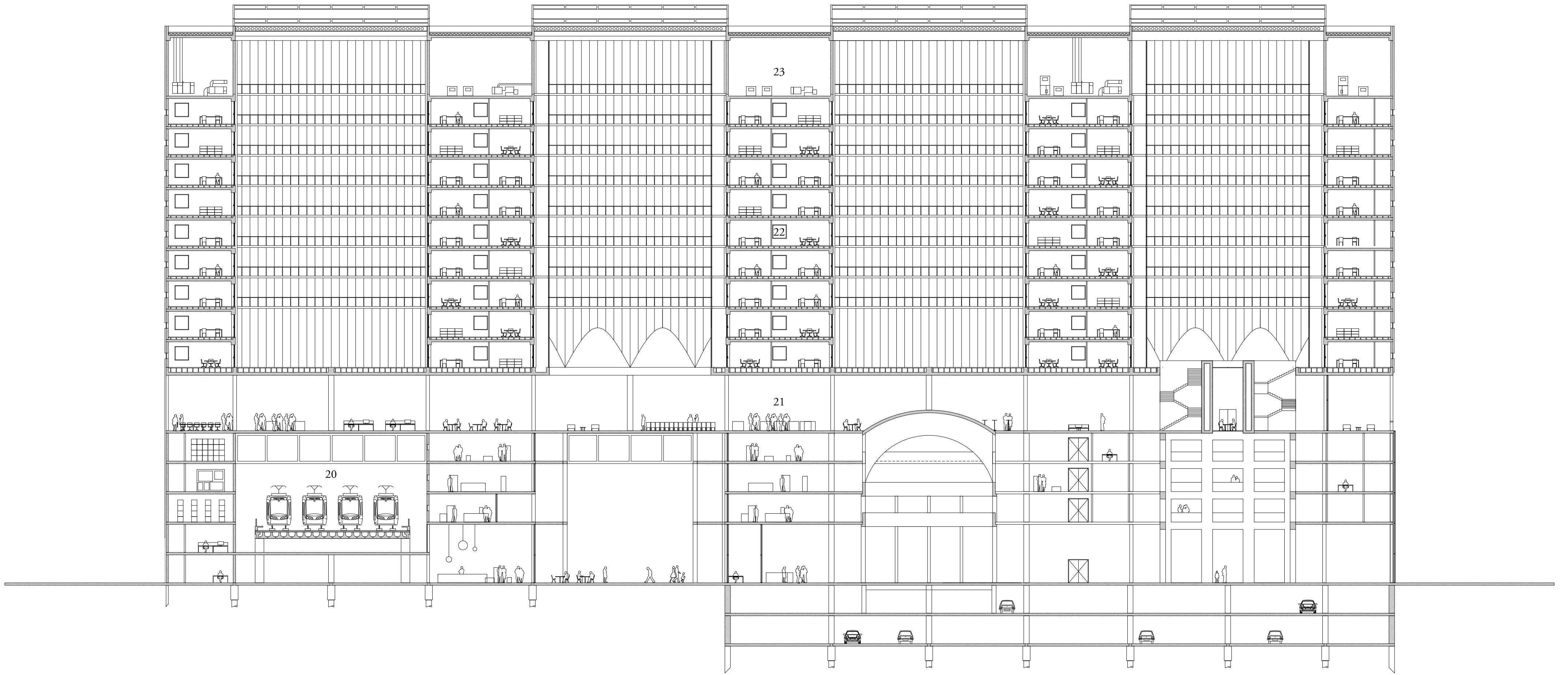
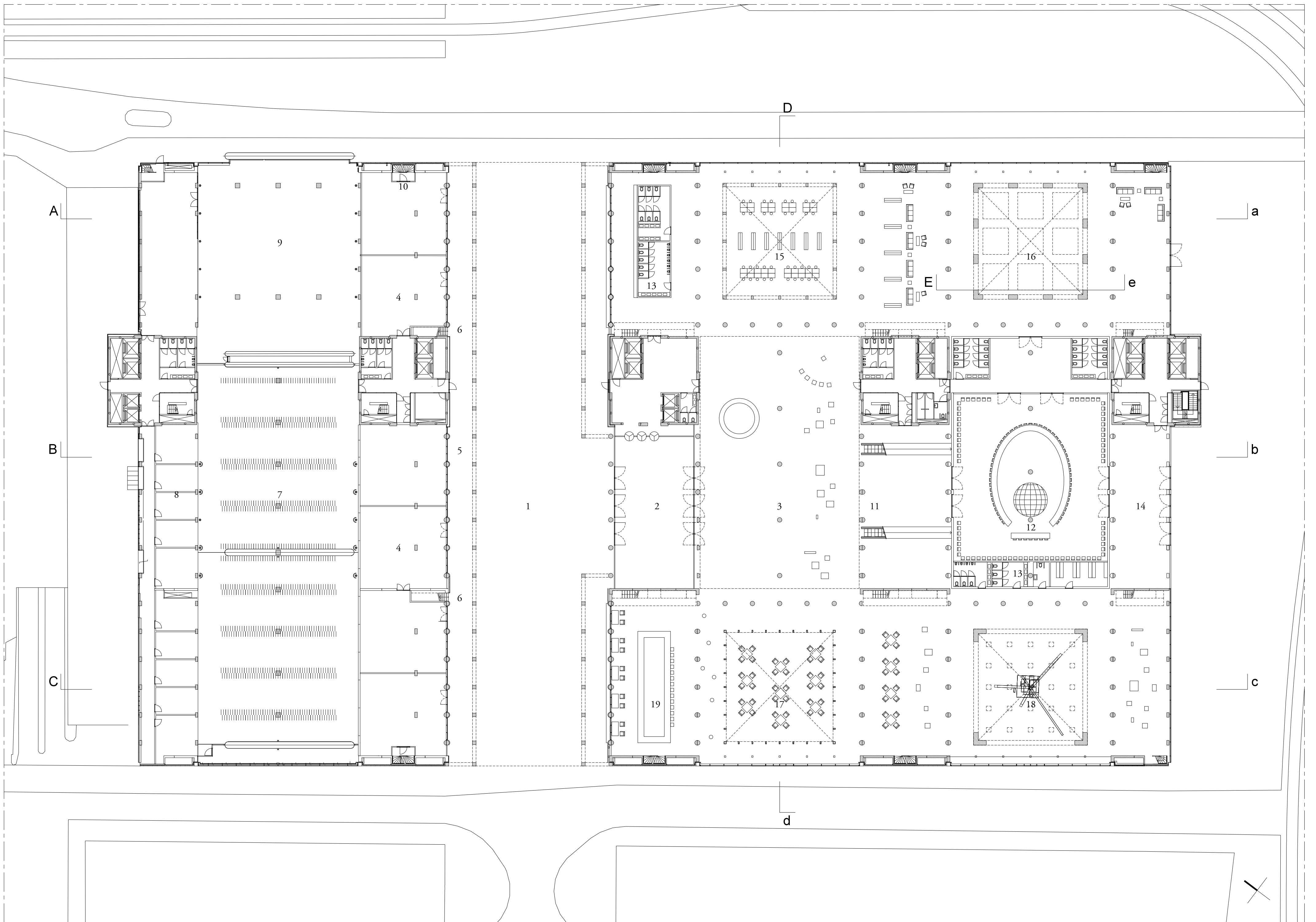


The Place of Work

Plans and sections I



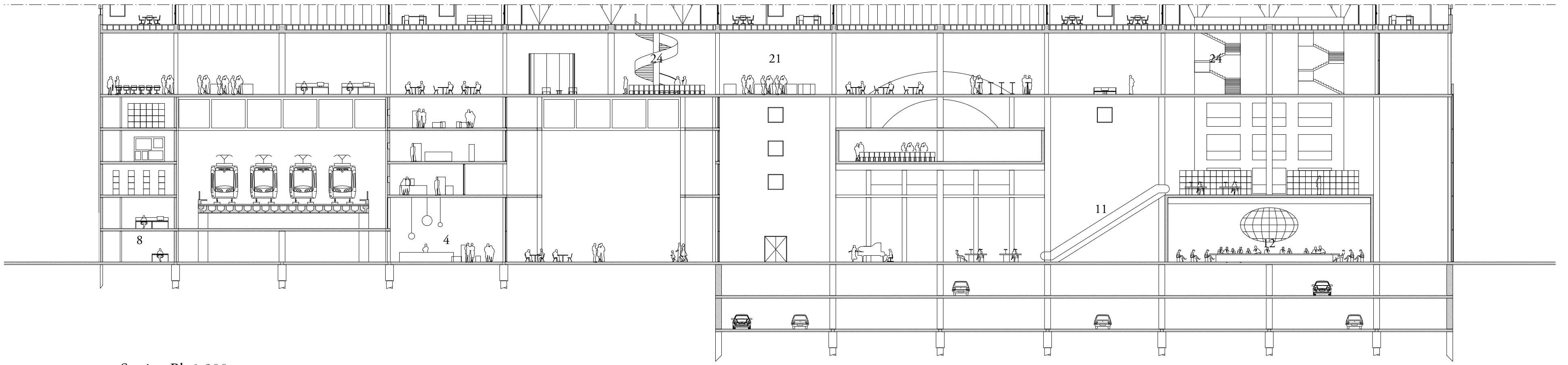
Section Aa 1:300



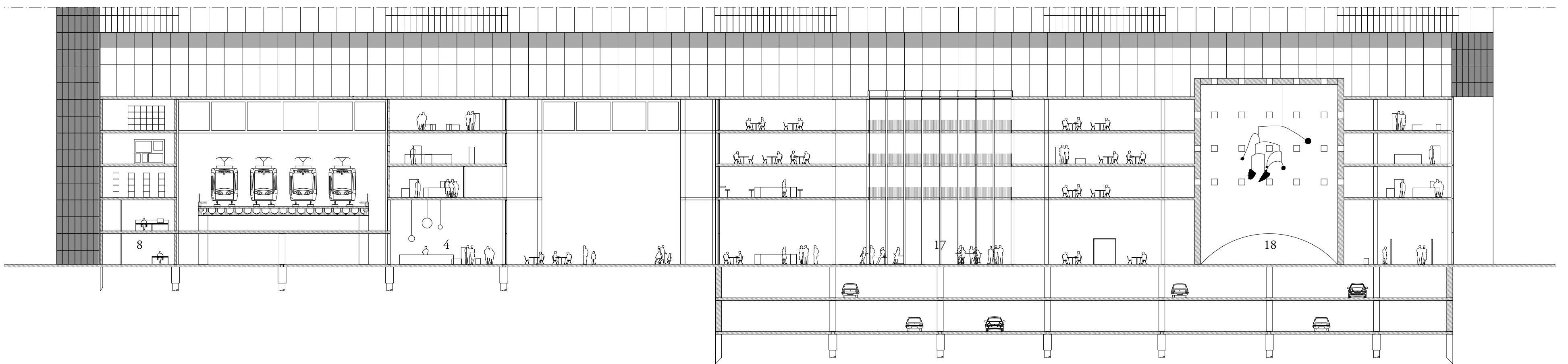
Plan ground floor 1:300

The Place of Work

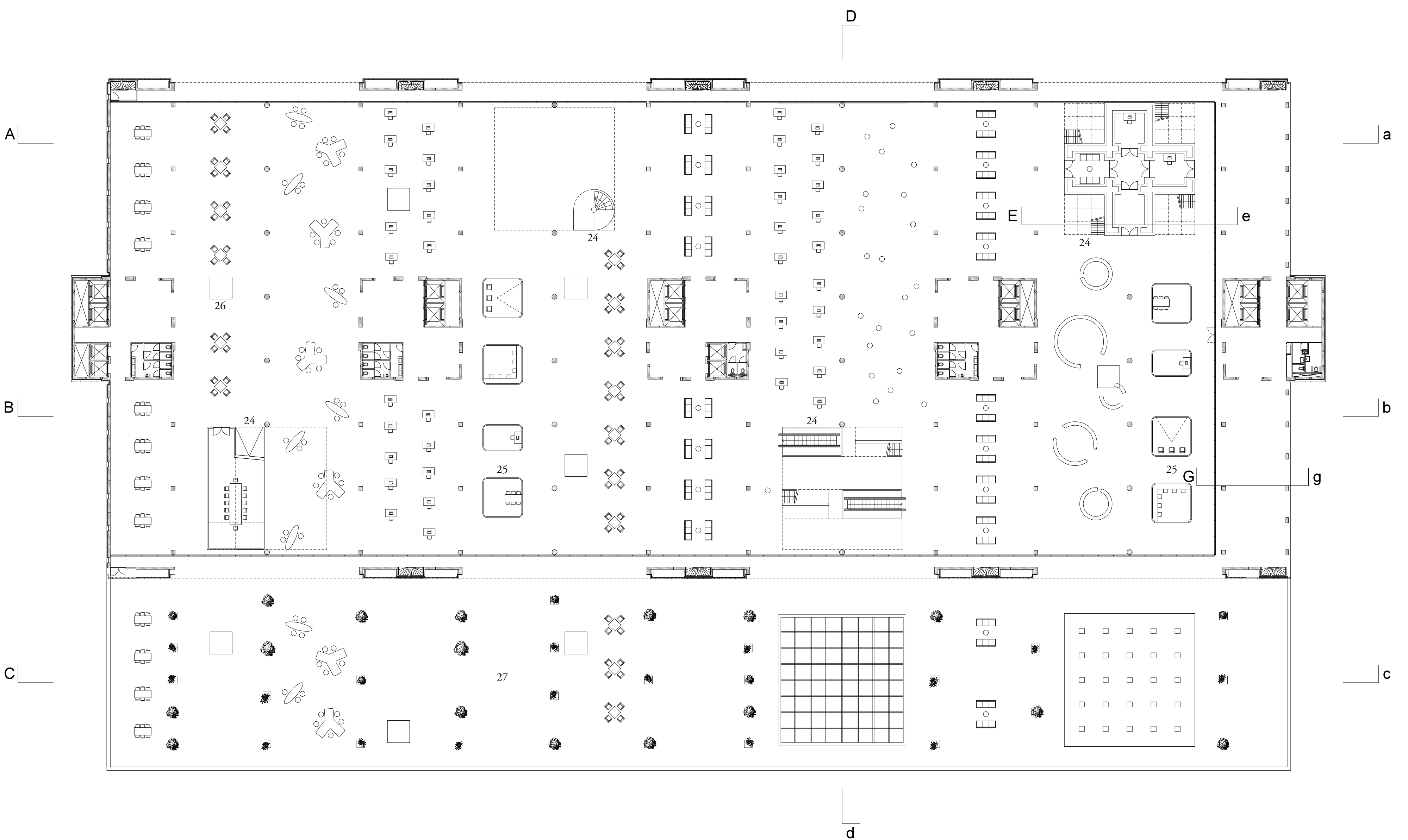
Plans and sections II



Section Bb 1:300



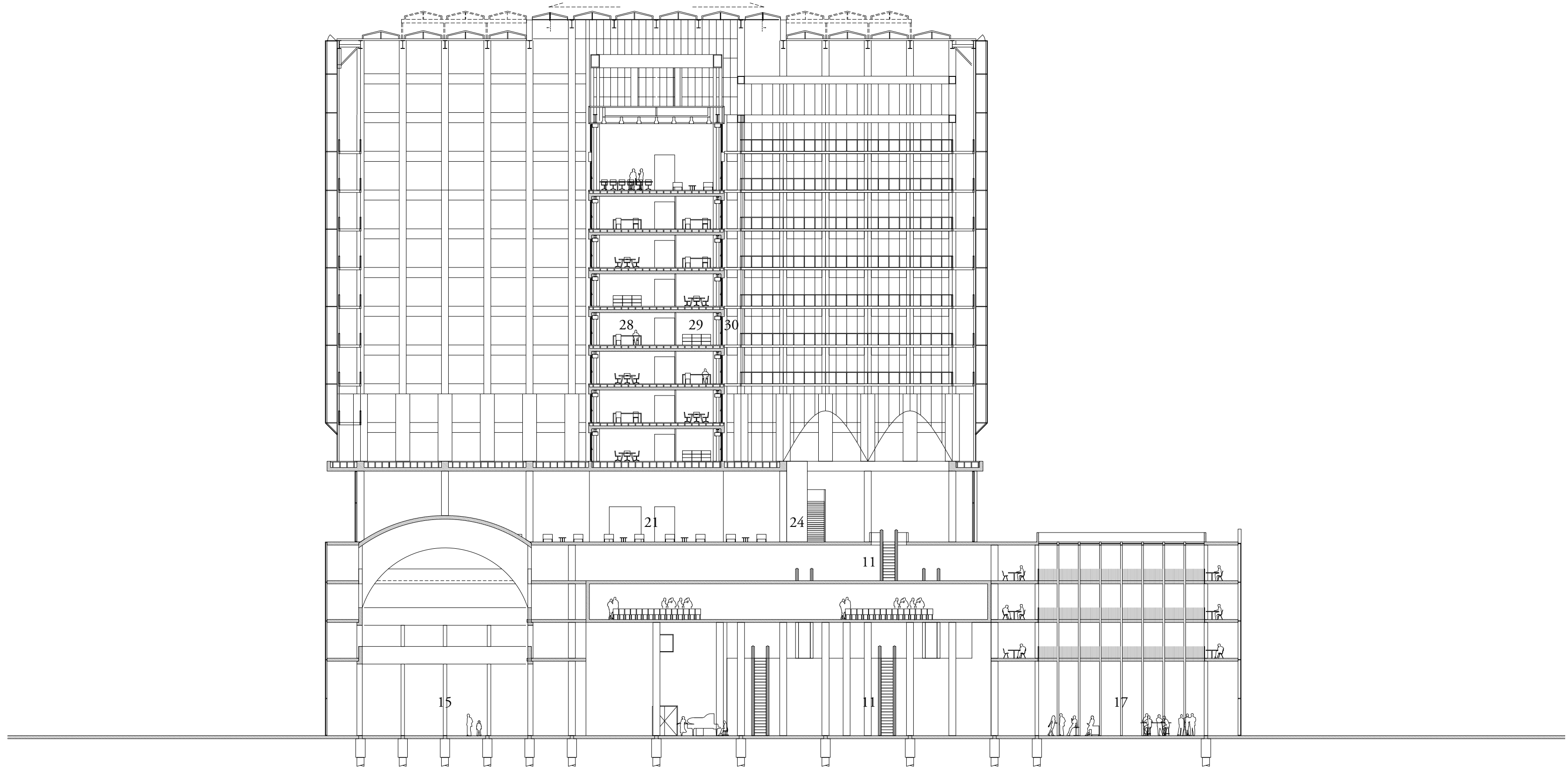
Section Cc 1:300



Plan 5th floor 1:300

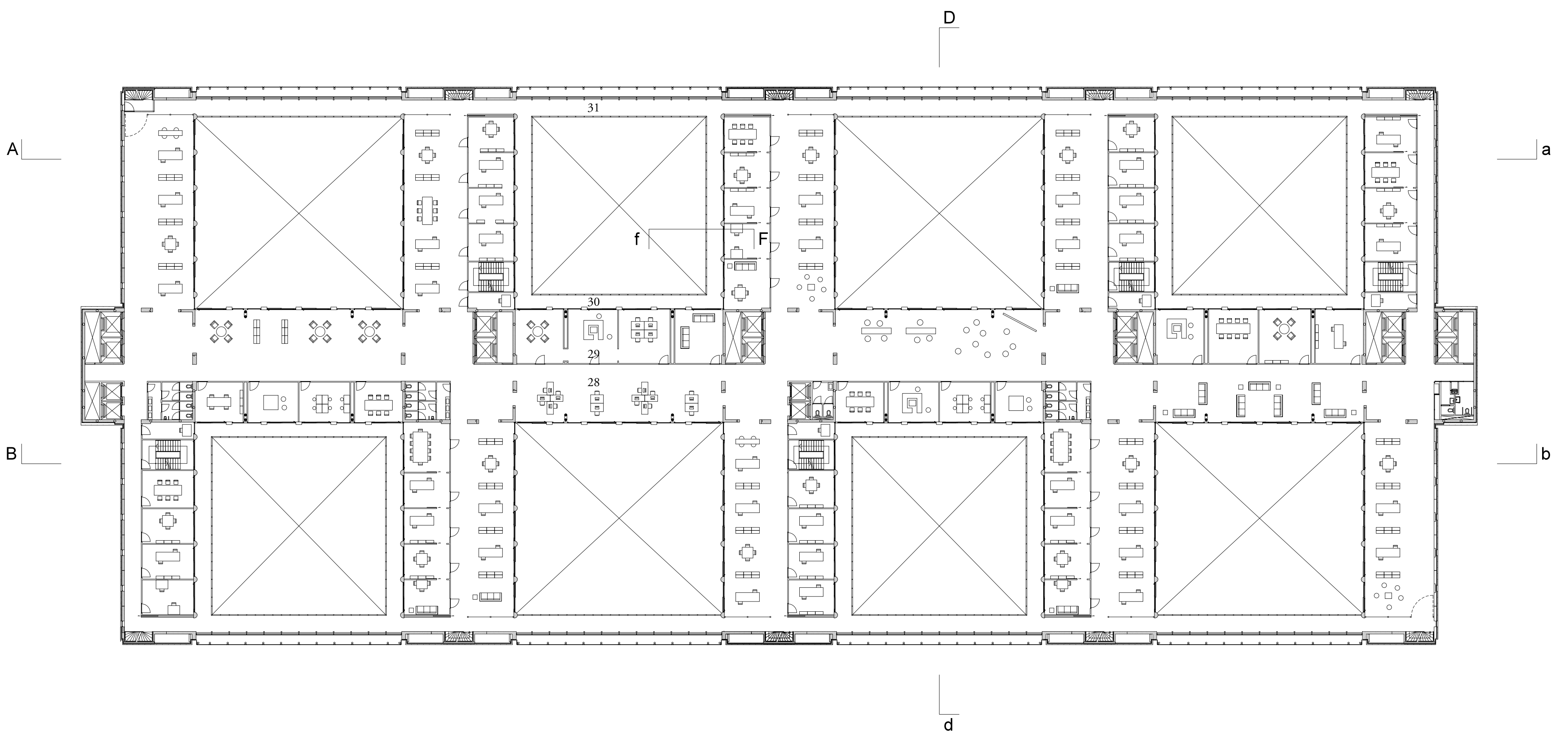
The Place of Work

Plans and sections III



Section Dd 1:300

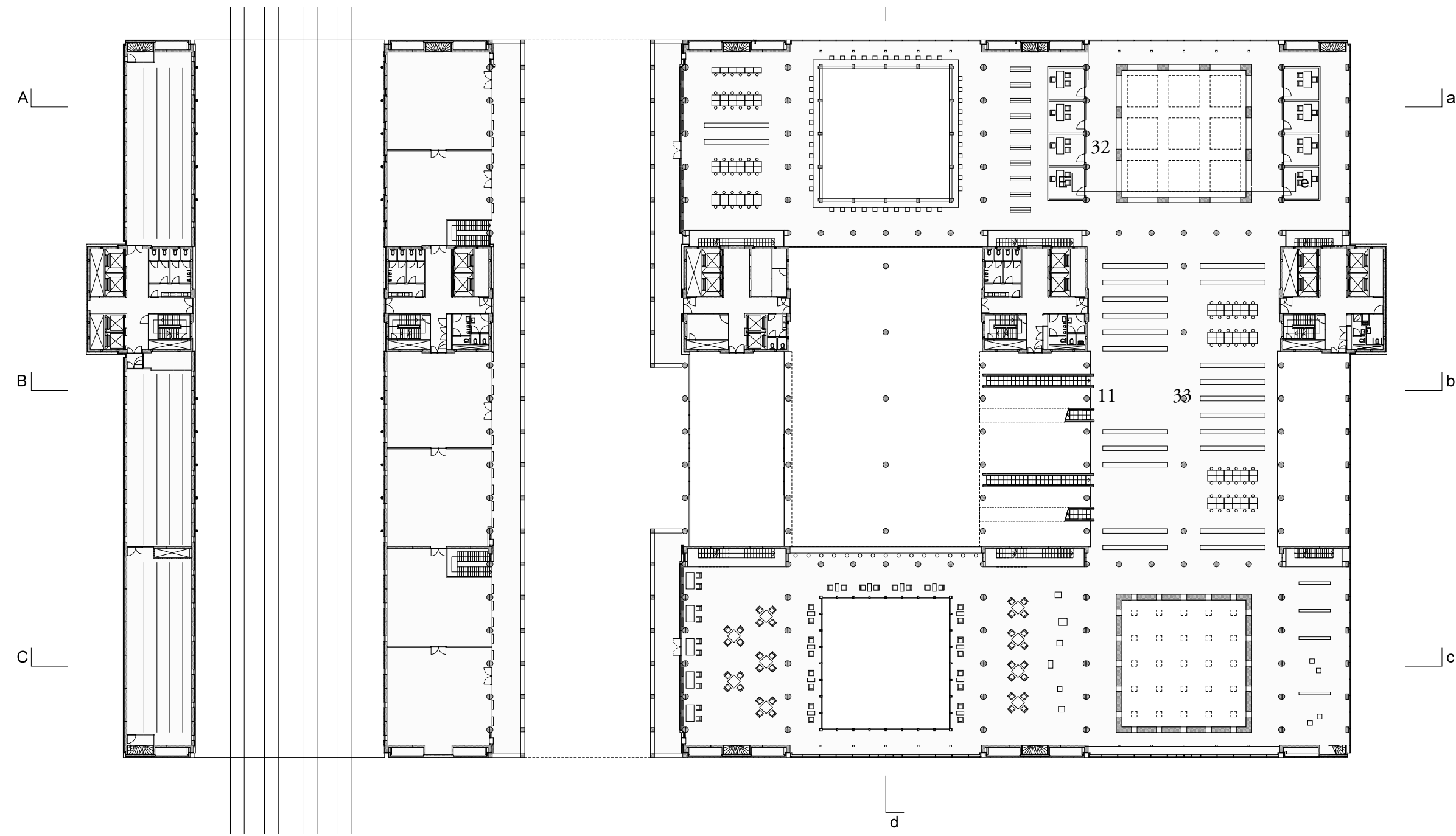
- | | | |
|--|-------------------------------------|---|
| 1 Passage | 13 Toilets | 25 Glass meeting room |
| 2 Entrance | 14 Separate conference/VIP entrance | 26 Kiosk |
| 3 Entrance hall | 15 Reading Room | 27 Terrace |
| 4 Retail | 16 IND entrance hall | 28 Open offices |
| 5 Slow traffic retail route | 17 Cafe | 29 Closed office along balcony |
| 6 Access to second floor retail street | 18 Exhibition hall | 30 Balcony |
| 7 Bike | 19 Bar/kitchen | 31 Perimeter balconies "aanlandplekken" |
| 8 Back office | 20 Tram passage | 32 IND offices |
| 9 HTM | 21 Informal meeting floor | 33 Library |
| 10 Escape stair | 22 Offices | 34 Check-in gates |
| 11 Escalators to offices | 23 Technical space | 35 Team workspaces "in enfilade" |
| 12 Van Kleffenzaal | 24 Stairs to seventh floor (atria) | |



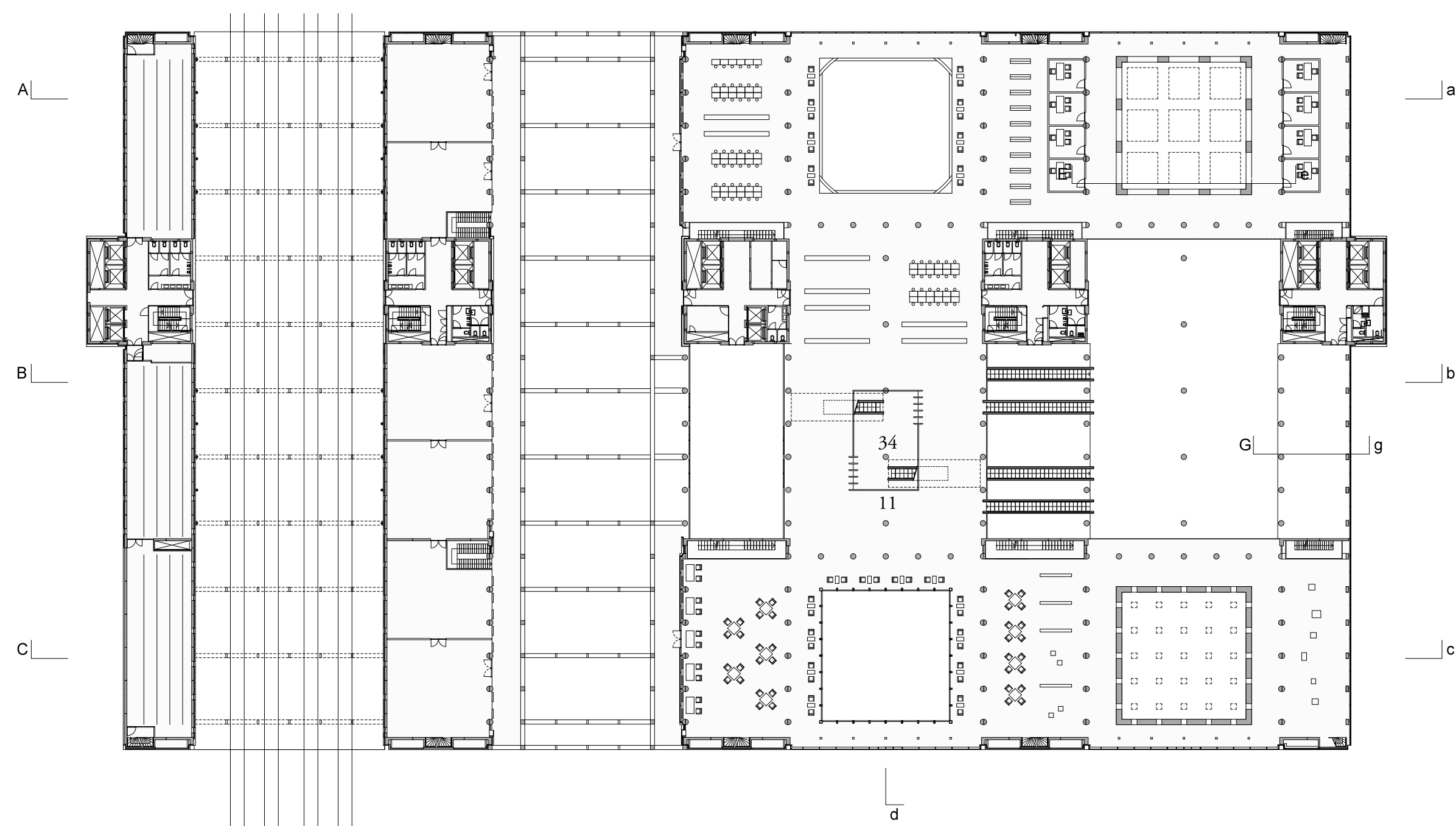
Plan 11th floor 1:300

The Place of Work

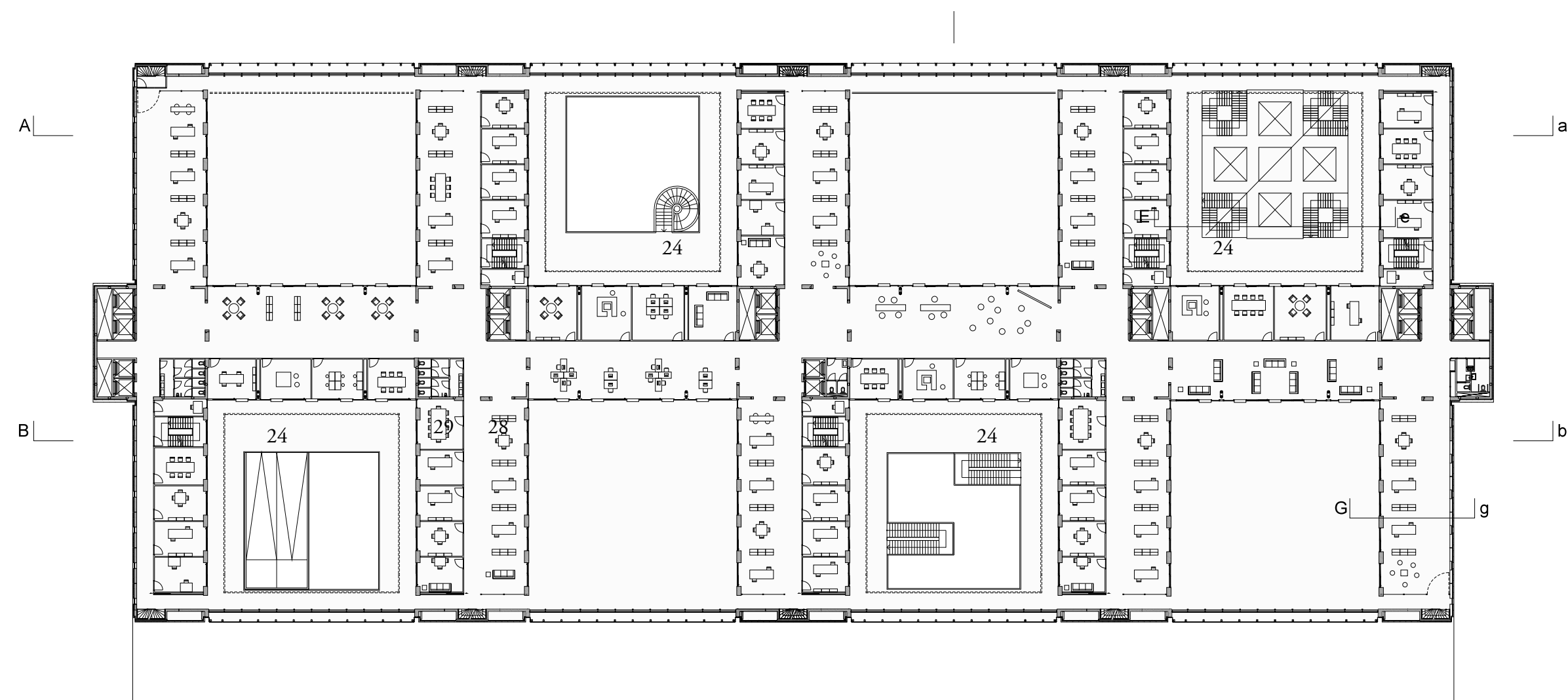
Plans and sections IV



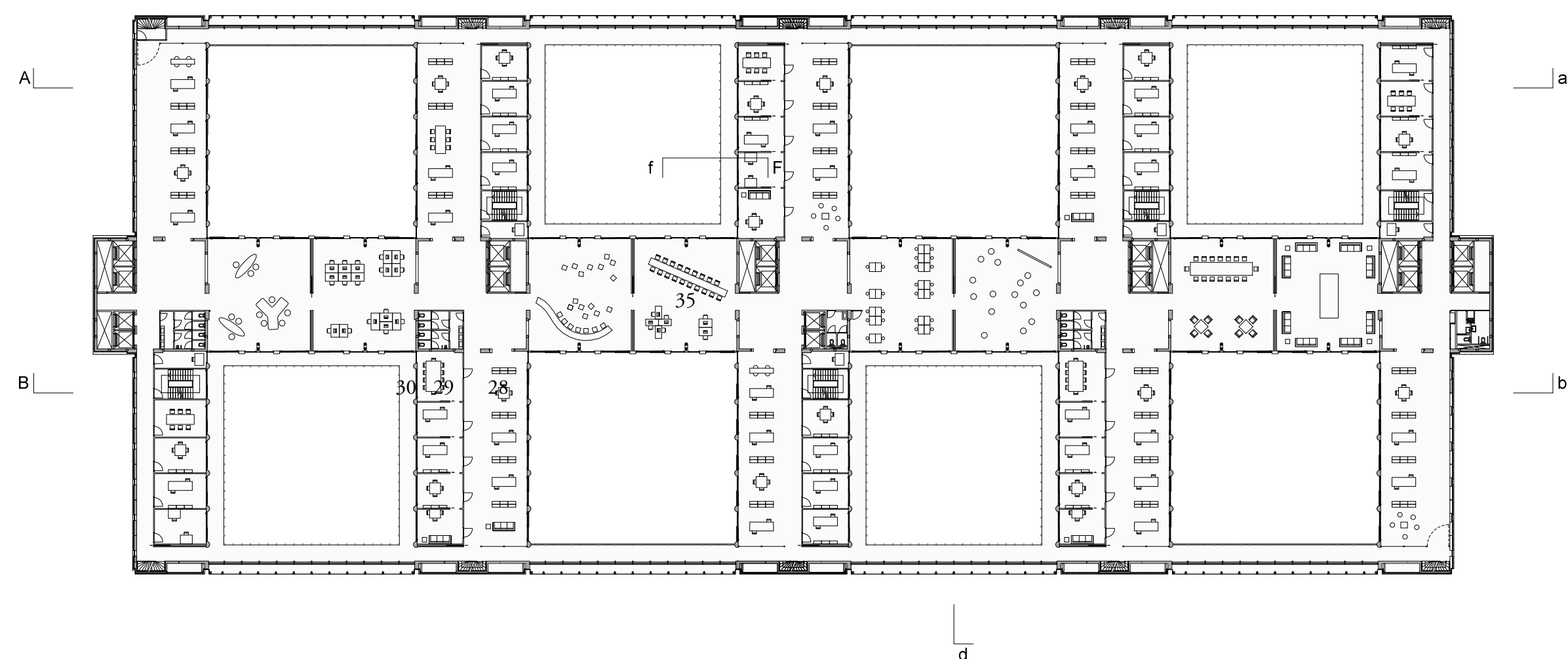
Plan 2nd floor 1:500



Plan 4th floor 1:500



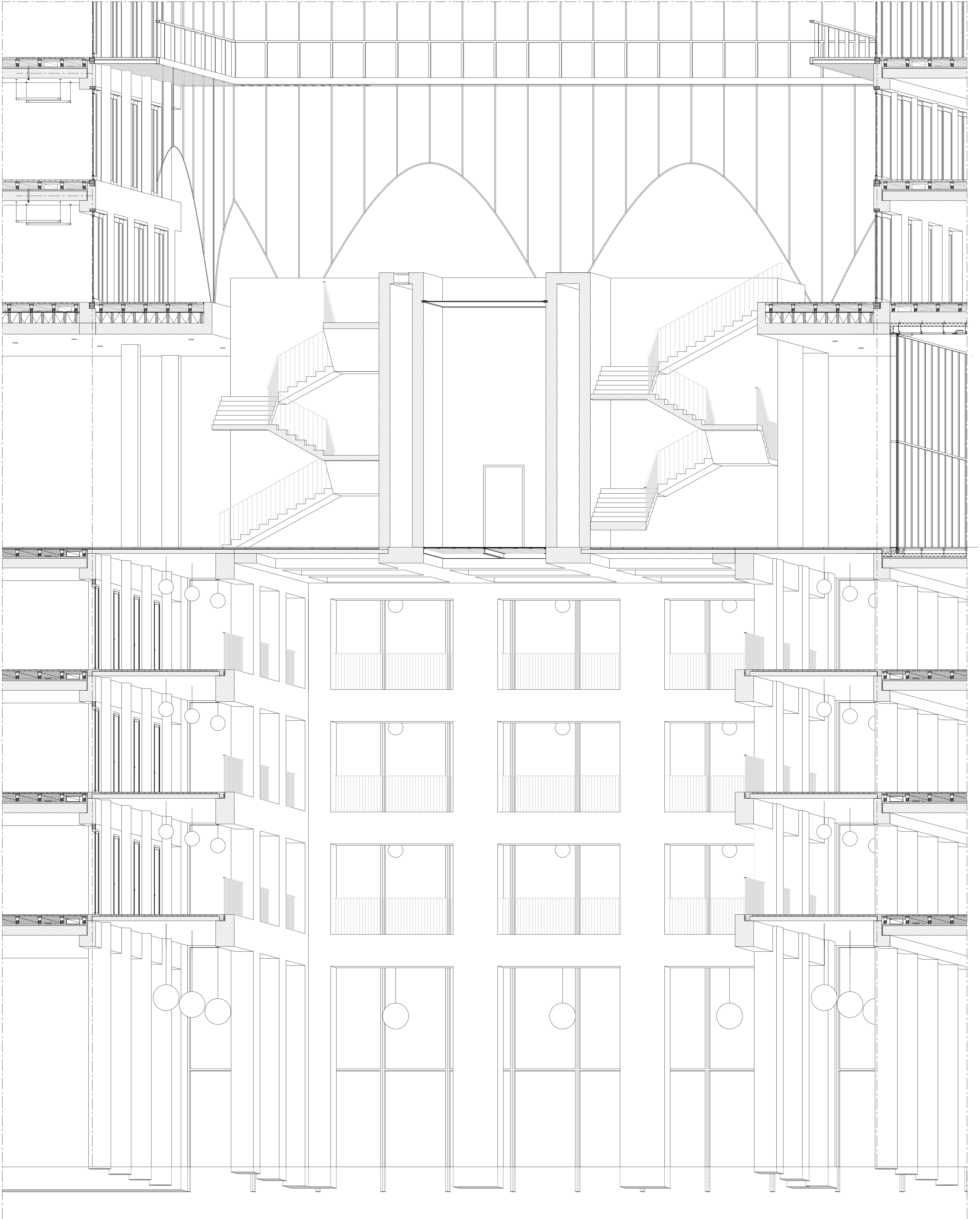
Plan 7th floor 1:500



Plan 14th floor 1:500

The Place of Work

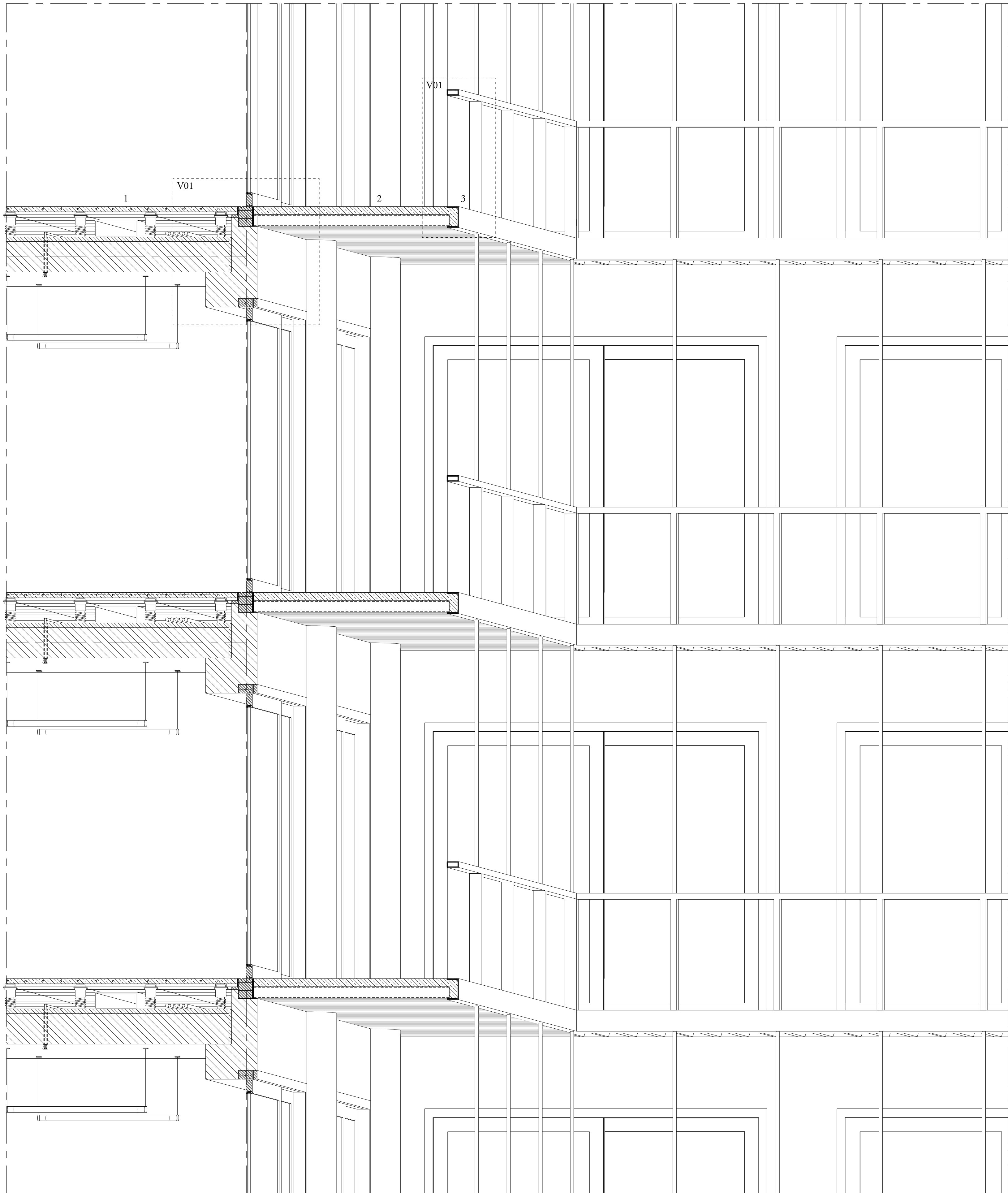
Detailed section 1:50



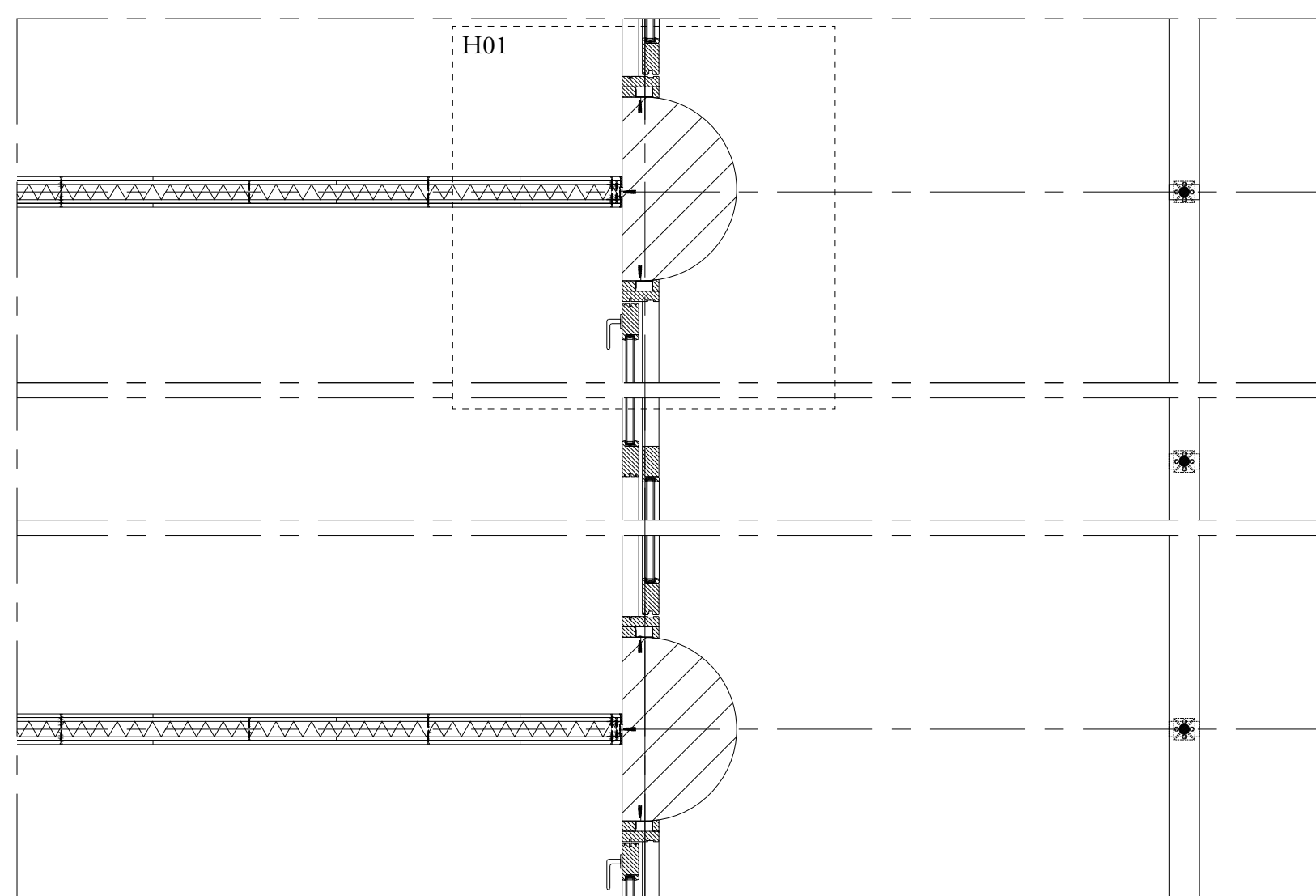
Detailed section of through the three "zones" of the building 1:50

The Place of Work

Detailed section 1:20



Detailed 3d section of a typical office wing with balconies 1:20

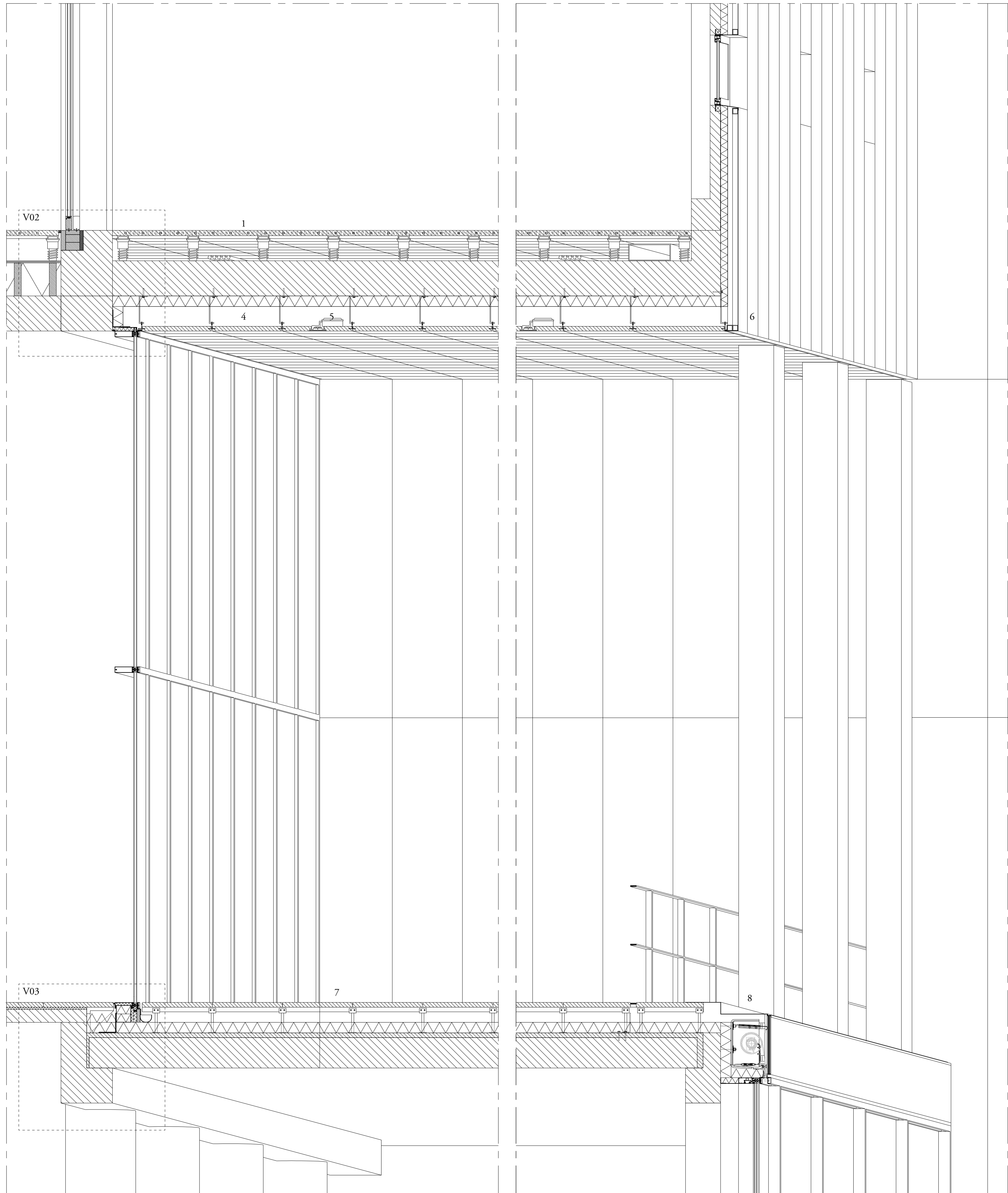


Detailed horizontal section of a typical office wing with balconies 1:20

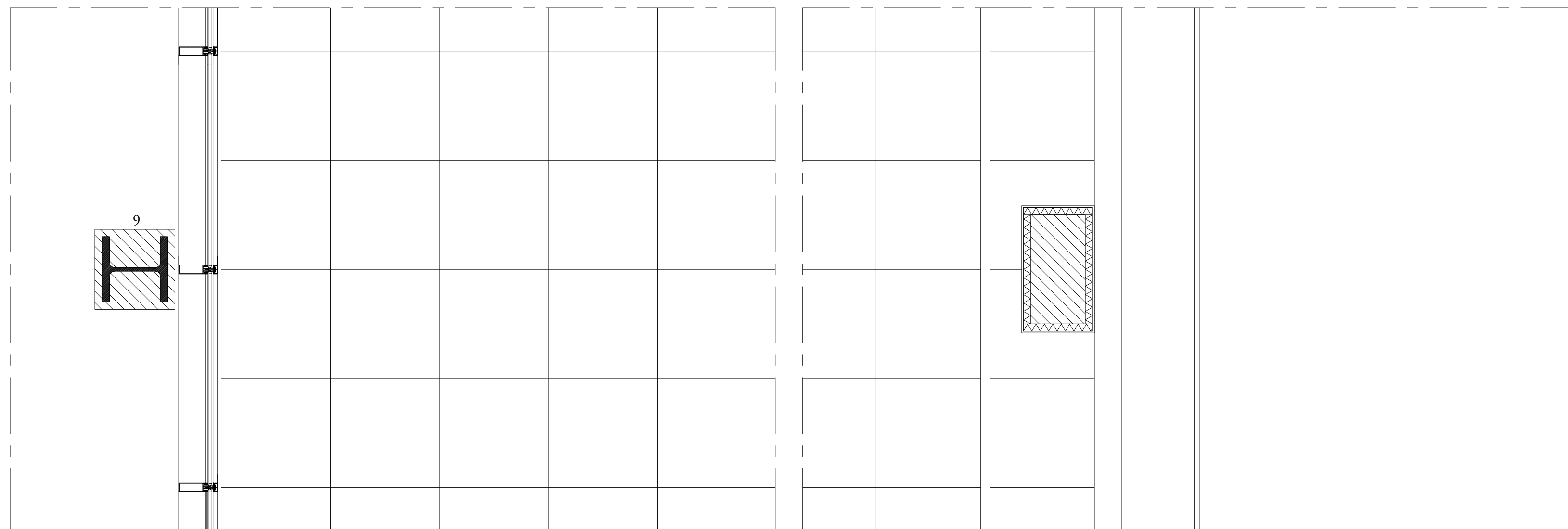
- | | |
|--|--|
| <p>1 Hollow floor system:
 - 40 mm self levelling concrete screed with floor heating / cooling
 - 20 mm gypsum fibreboard permanent formwork
 - Adjustable PVC support filled with calcium sulphate screed (h.o.h. 600 mm)
 Existing hollow core-slab 260 mm</p> <p>2 Balcony construction:
 - Corrugated steel decking floor 100 mm
 - Concrete top layer</p> <p>3 U-profile 100 mm x 200 mm</p> <p>4 Hollow floor system
 - New in situ concrete floor 300 mm
 - Insulation layer 90 mm
 - Suspended Glass fibre reinforced concrete (GFRC) ceiling 600 x 600 panels</p> <p>5 Erco build-in spot</p> <p>6 Existing south facade with aluminium</p> | <p>7 Hollow floor system with concrete 600 x 600 mm tiles on top</p> <p>8 Integrated sunshading (Concealed toughened blind) in aluminium profile</p> <p>9 Steel HE 360 M profile in concrete</p> <p>10 Wooden sliding window to office balcony</p> <p>11 Metal stud wall</p> <p>12 Half-round existing construction; radius: 300 mm</p> <p>13 Full-steel rod; radius: 15 mm</p> |
|--|--|

The Place of Work

Detailed section 1:20



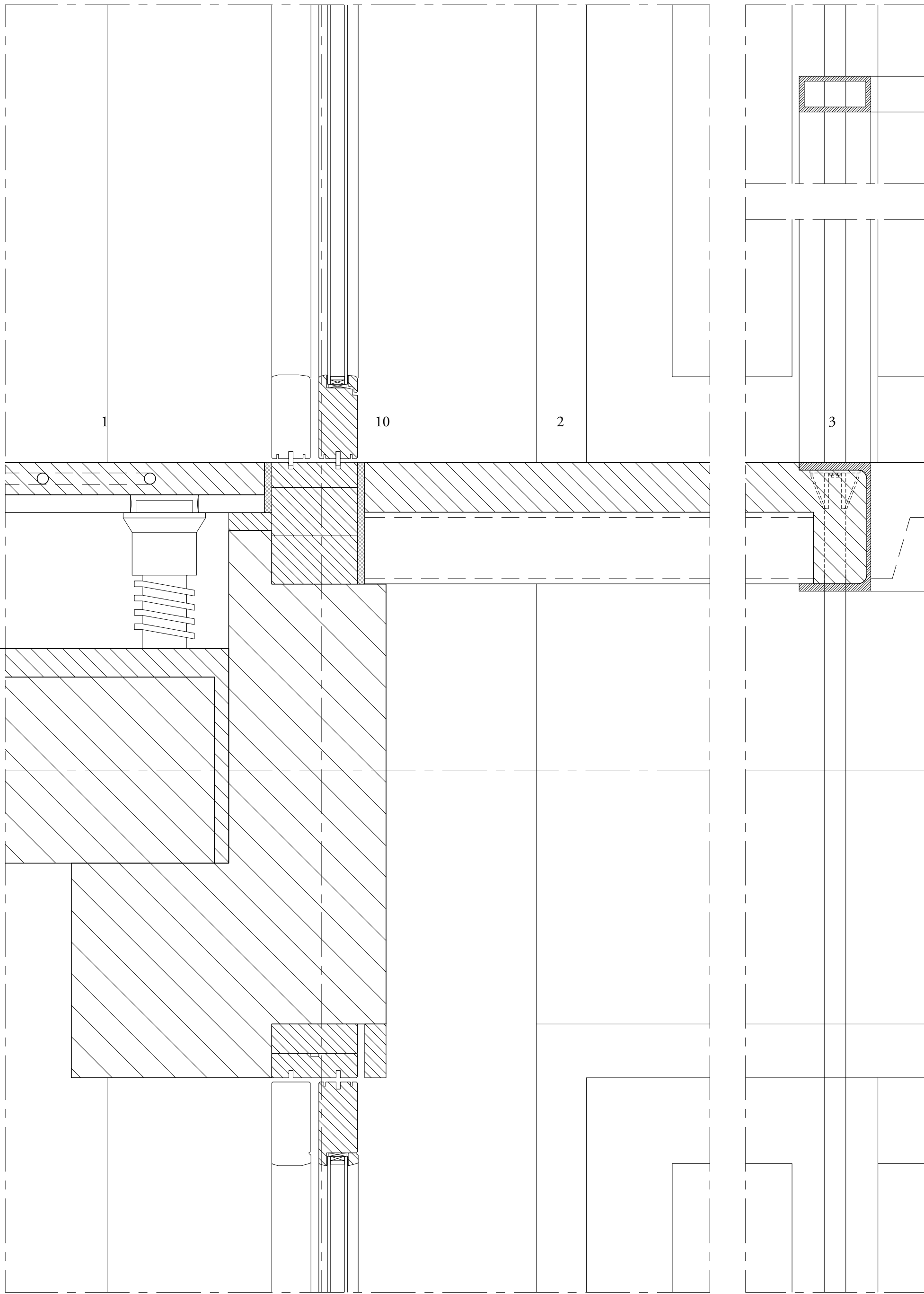
Detailed 3d section of the fifth floor facade and setback 1:20



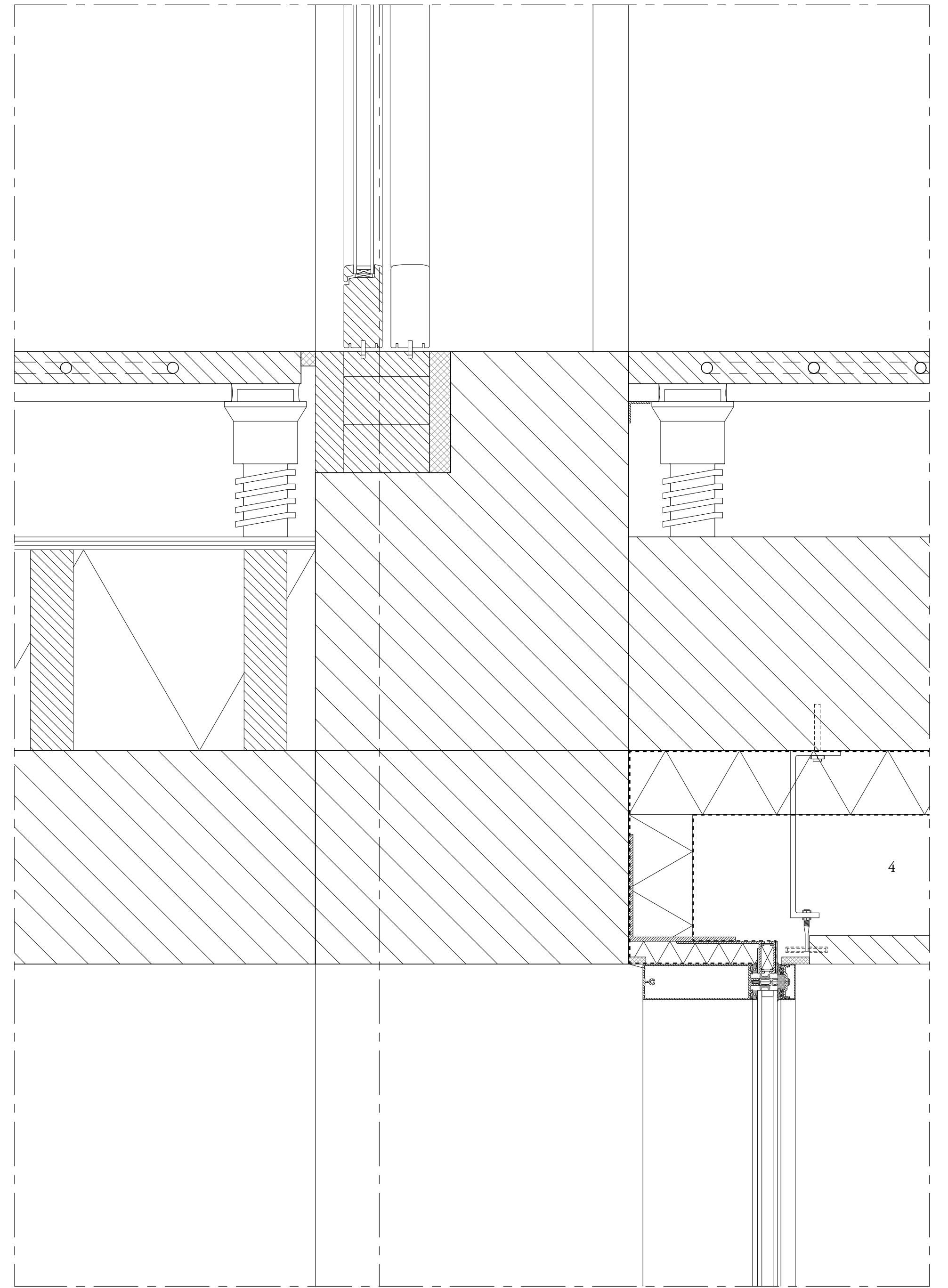
Detailed horizontal section of the fifth floor facade and setback 1:20

The Place of Work

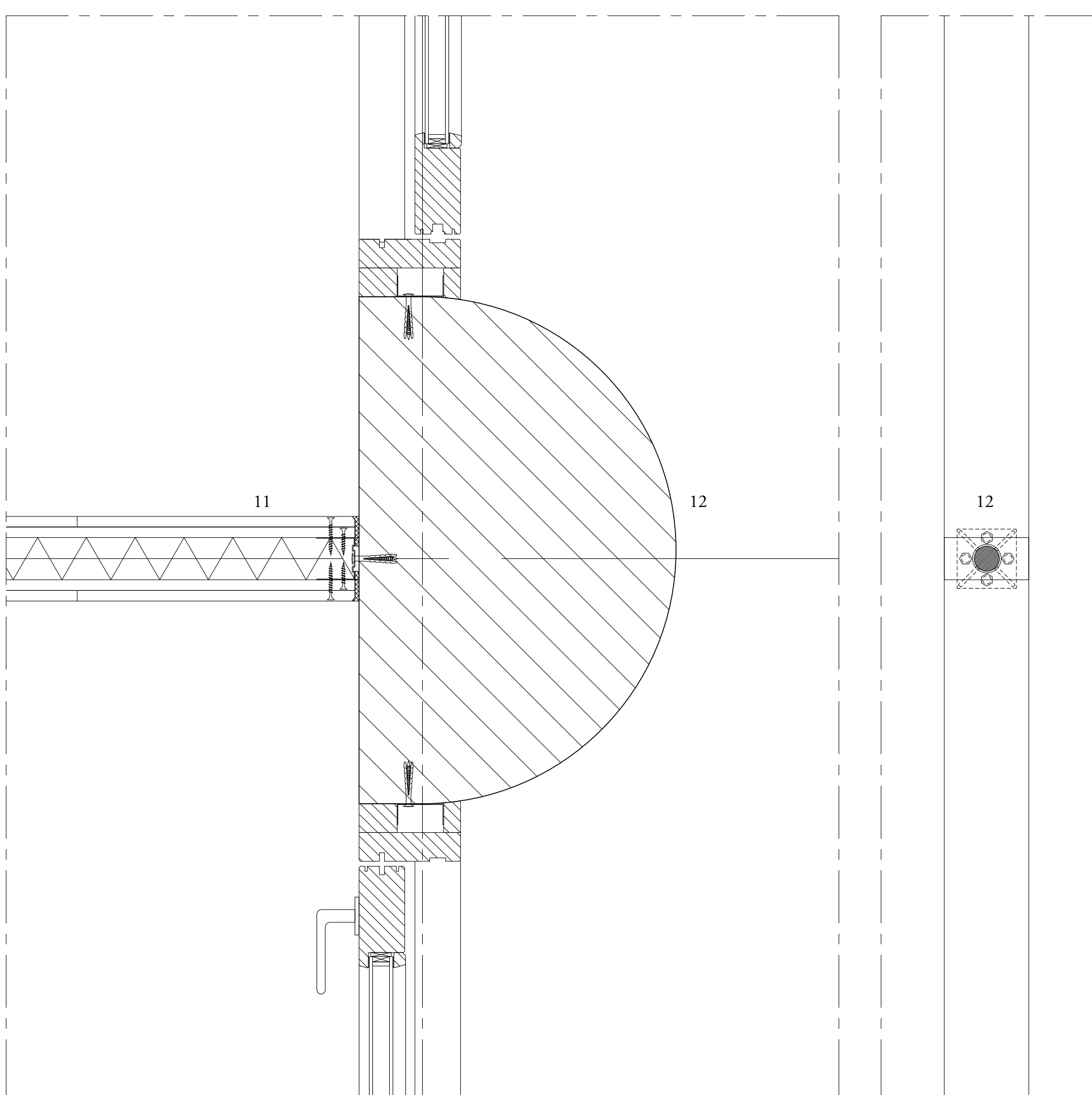
Details 1:5



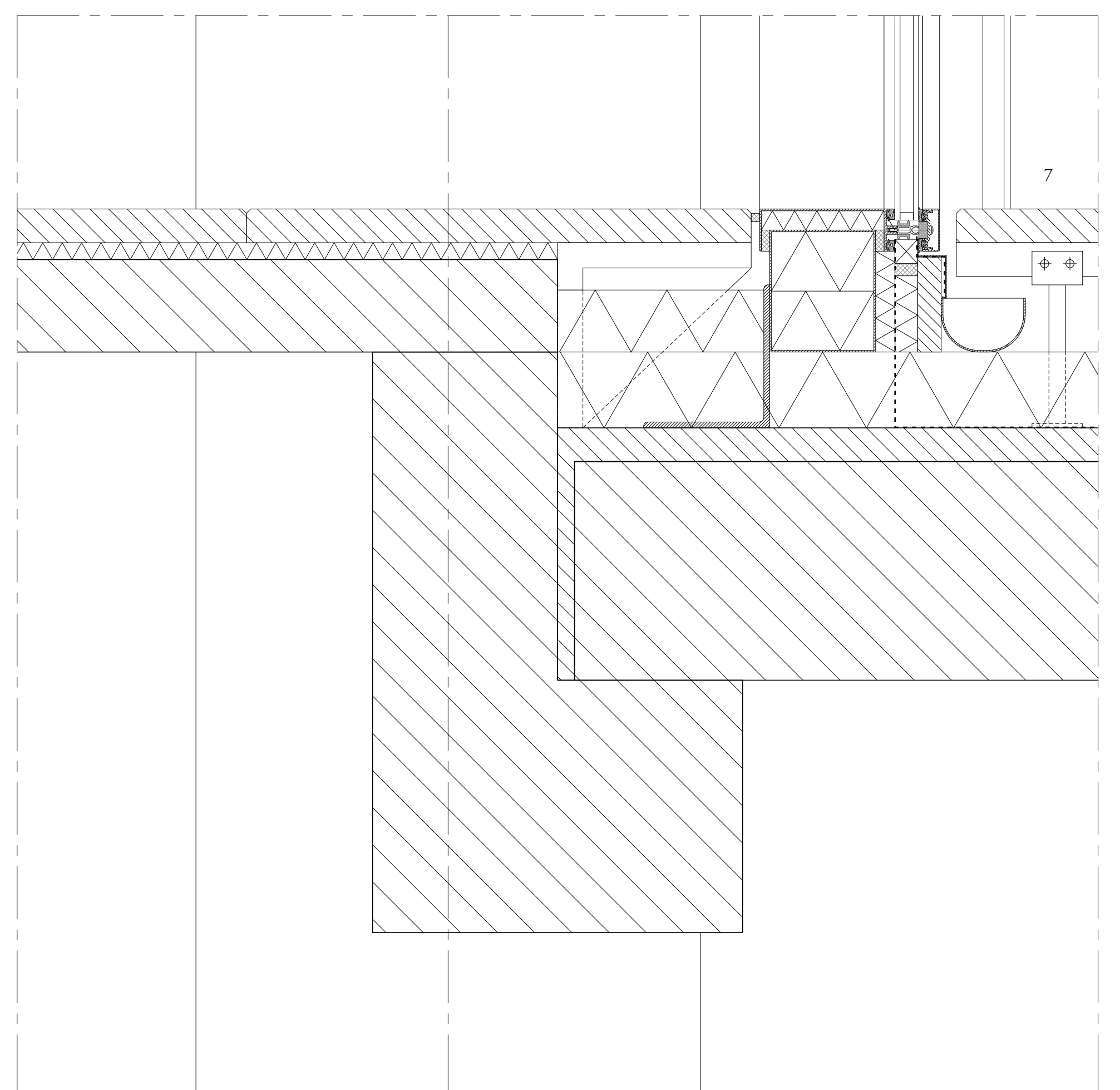
Detail V01



Detail V02



Detail H01

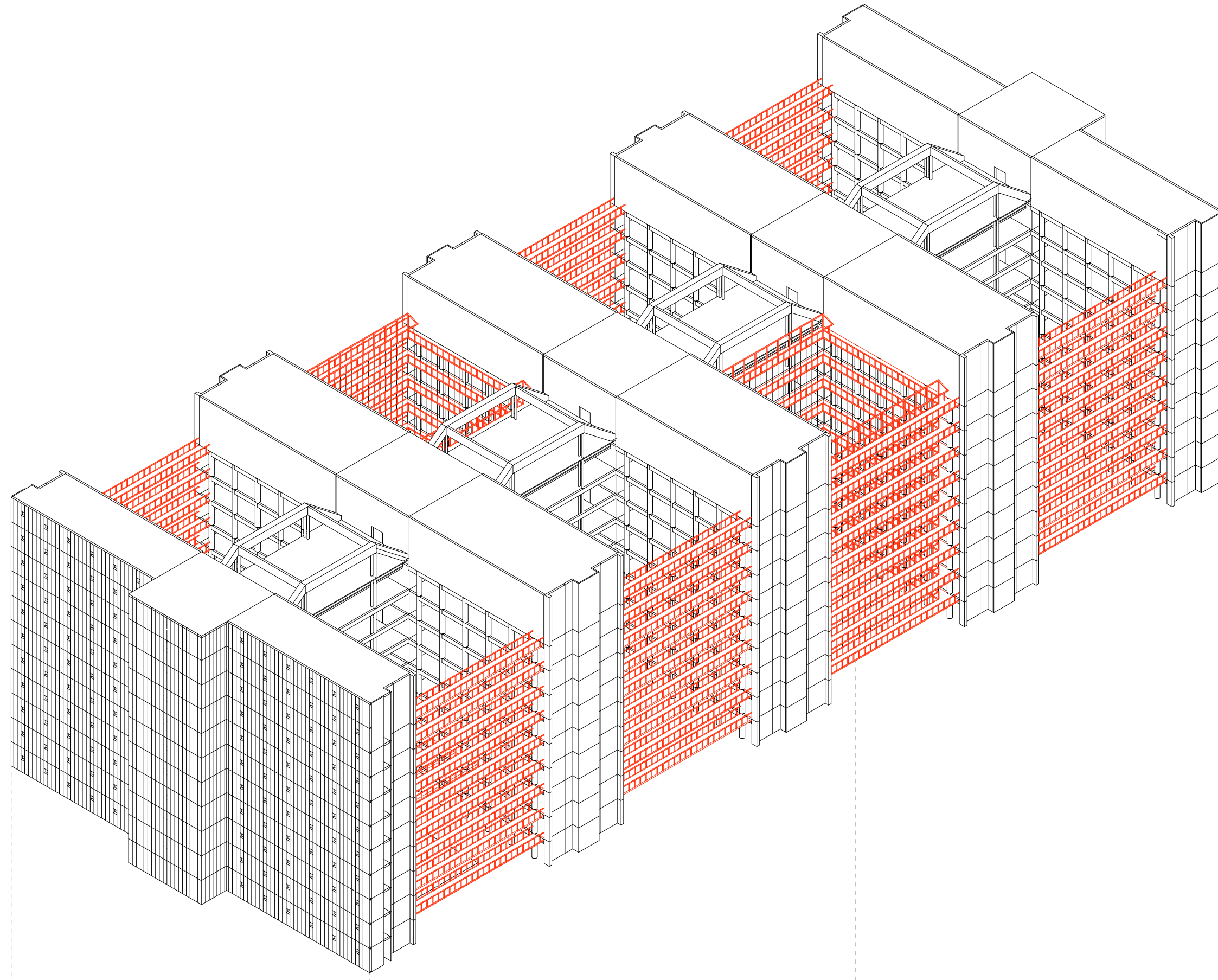


Detail H02

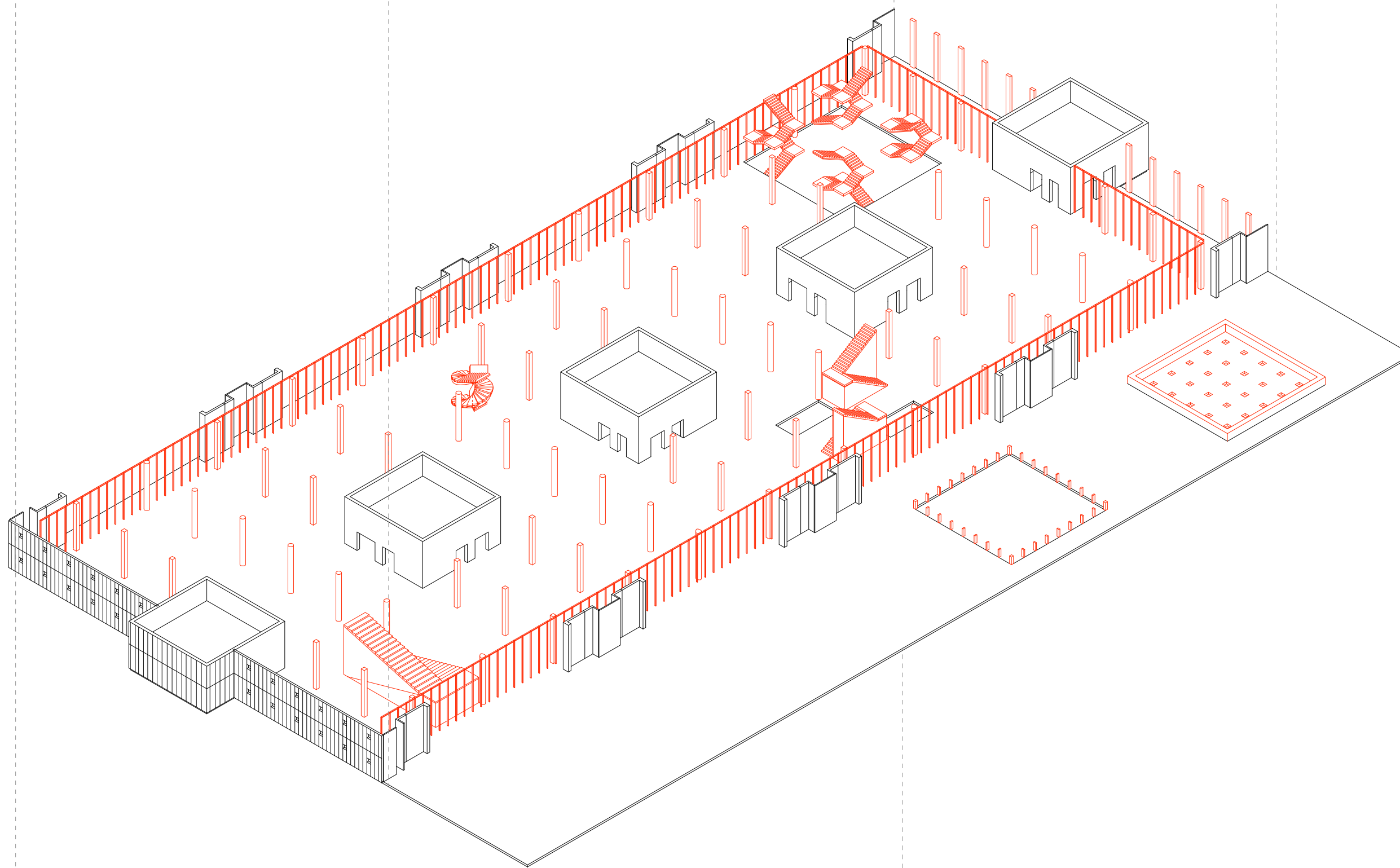
The Place of Work

Exploded axonometric view

Office floors



Informal meeting floor



Public floors

