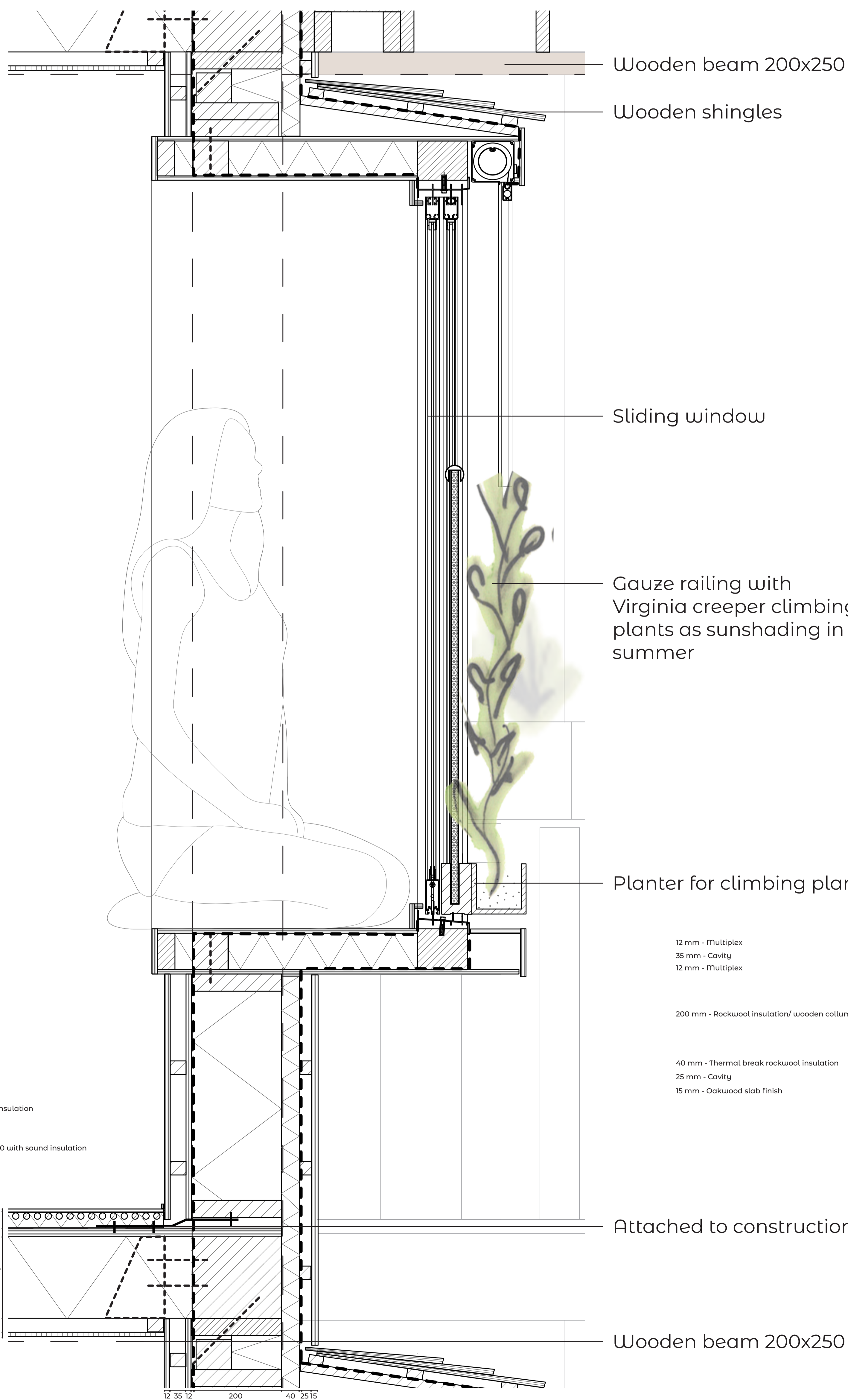
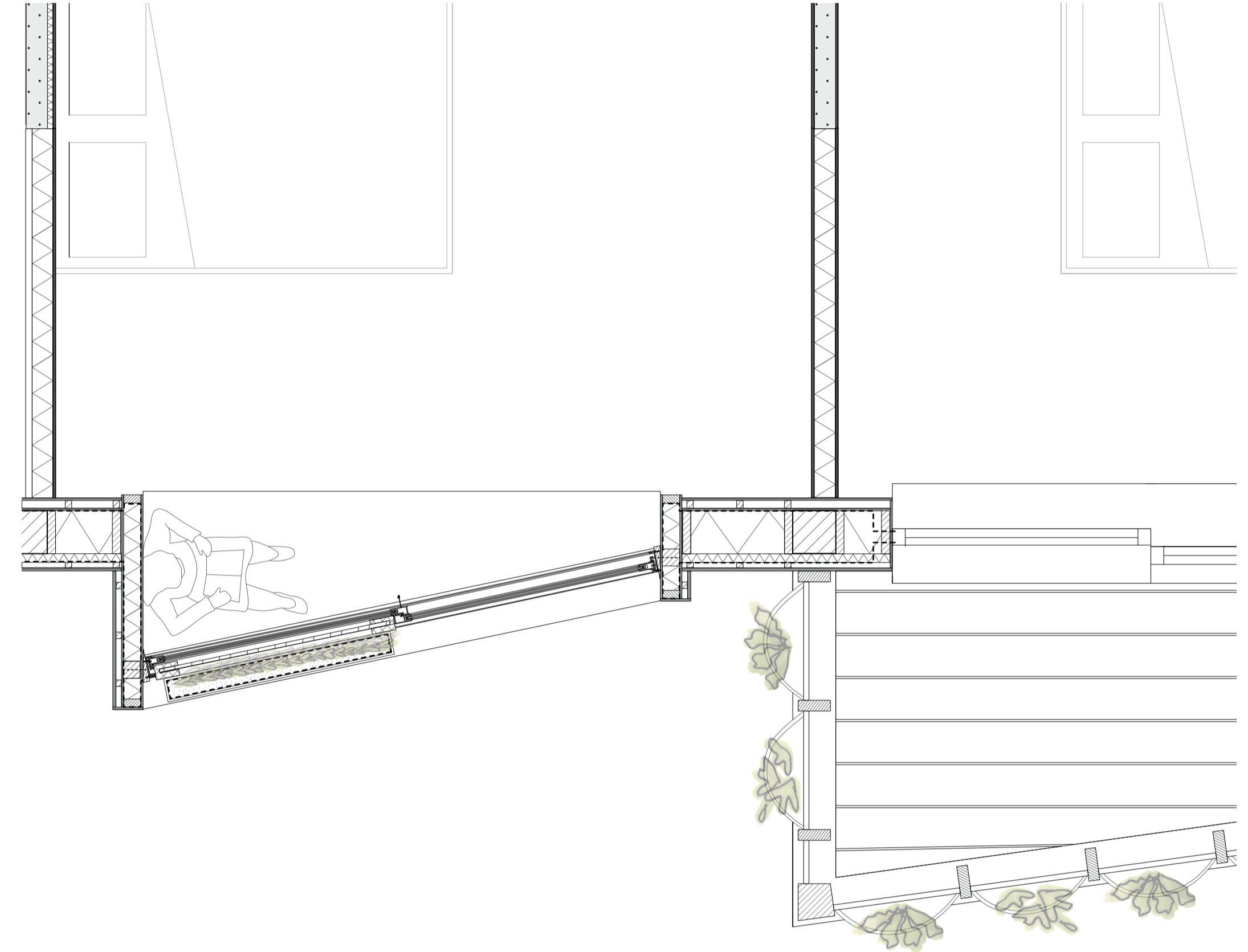


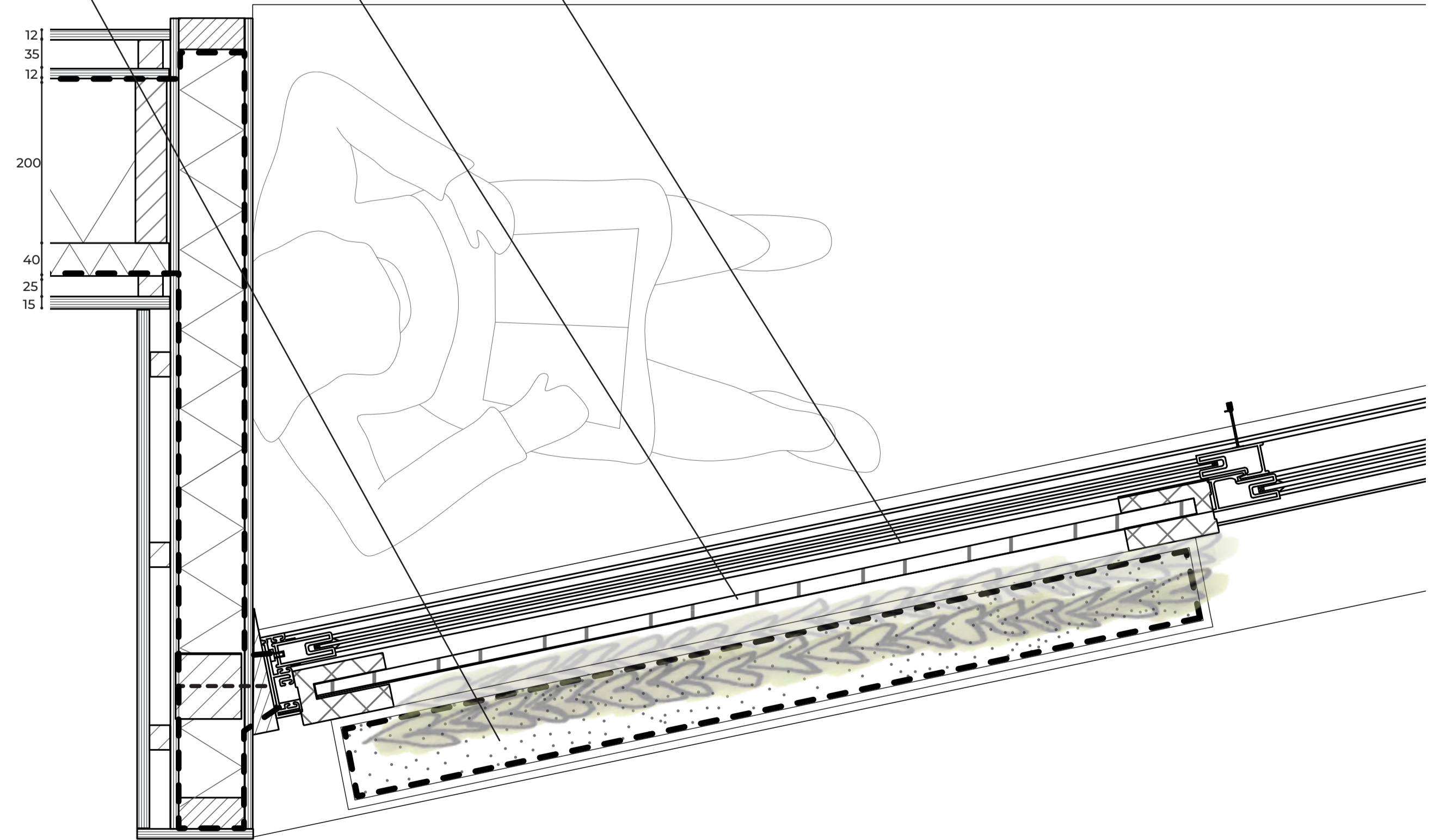
**Facade fragment West 1:20**



9 mm - Floor finish wood  
 34 mm - Springy layer Gutex insulation with floorheating/cooling  
 18 mm - Multiplex  
 200 mm - Wooden slats 75x200 with sound insulation  
 20 mm - Cavity  
 15 mm - Gypsum ceiling

12 35 12 200 40 2515  
 15 mm - Oakwood slab finish  
 25 mm - Cavity  
 40 mm - Thermal break rockwool insulation  
 200 mm - Rockwool insulation/ wooden column 200x200  
 12 mm - Multiplex  
 35 mm - Cavity  
 12 mm - Multiplex

12 mm - Multiplex  
 35 mm - Cavity  
 12 mm - Multiplex  
 200 mm - Rockwool insulation/ wooden column  
 40 mm - Thermal break rockwool insulation  
 25 mm - Cavity  
 15 mm - Oakwood slab finish



**Detail window vertical and horizontal 1:5**