

On the prospects of imaging Sagittarius A* from space

Roelofs, Freek; Falcke, Heino; Brinkerink, Christiaan; Moscibrodzka, Monika; Gurvits, Leonid I.; Martin-Neira, Manuel; Kudriashov, Volodymyr; Klein-Wolt, Marc; Tilanus, Remo; More Authors

DOI

[10.1017/S1743921318007676](https://doi.org/10.1017/S1743921318007676)

Publication date

2020

Document Version

Accepted author manuscript

Published in

Proceedings of the International Astronomical Union

Citation (APA)

Roelofs, F., Falcke, H., Brinkerink, C., Moscibrodzka, M., Gurvits, L. I., Martin-Neira, M., Kudriashov, V., Klein-Wolt, M., Tilanus, R., & More Authors (2020). On the prospects of imaging Sagittarius A* from space. *Proceedings of the International Astronomical Union*, 14, 24-28.
<https://doi.org/10.1017/S1743921318007676>

Important note

To cite this publication, please use the final published version (if applicable).
Please check the document version above.

Copyright

Other than for strictly personal use, it is not permitted to download, forward or distribute the text or part of it, without the consent of the author(s) and/or copyright holder(s), unless the work is under an open content license such as Creative Commons.

Takedown policy

Please contact us and provide details if you believe this document breaches copyrights.
We will remove access to the work immediately and investigate your claim.

On the prospects of imaging Sagittarius A* from space

Freek Roelofs¹, Heino Falcke^{1,2}, Christiaan Brinkerink¹, Monika
Moscibrodzka¹, Leonid I. Gurvits^{3,4}, Manuel Martin-Neira⁵,
Volodymyr Kudriashov¹, Marc Klein-Wolt¹, Remo Tilanus^{1,6}, Michael
Kramer² and Luciano Rezzolla⁷

¹Department of Astrophysics, Institute for Mathematics, Astrophysics and Particle Physics,
Radboud University, PO Box 9010, 6500 GL Nijmegen, The Netherlands
email: f.roelofs@astro.ru.nl

²Max-Planck-Institut für Radioastronomie, Auf dem Hügel 69, D-53121 Bonn, Germany

³Joint Institute for VLBI ERIC, P.O. Box 2, 7990 AA Dwingeloo, The Netherlands

⁴Department of Astrodynamics and Space Missions, Delft University of Technology, 2629 HS
Delft, The Netherlands

⁵European Space Research and Technology Centre (ESTEC), The European Space Agency,
Keplerlaan 1, 2201 AZ Noordwijk, The Netherlands

⁶Leiden Observatory, Leiden University, P.O. Box 9513, 2300 RA Leiden, The Netherlands

⁷Institut für Theoretische Physik, Goethe-Universität, Max-von-Laue-Str. 1, 60438 Frankfurt,
Germany

Abstract. Very Long Baseline Interferometry (VLBI) at sub-millimeter waves has the potential to image the shadow of the black hole in the Galactic Center, Sagittarius A* (Sgr A*), and thereby test basic predictions of the theory of general relativity. We investigate the imaging prospects of a new Space VLBI mission concept. The setup consists of two satellites in polar or equatorial circular Medium-Earth Orbits with slightly different radii, resulting in a dense spiral-shaped uv-coverage with long baselines, allowing for extremely high-resolution and high-fidelity imaging of radio sources. We simulate observations of a general relativistic magnetohydrodynamics model of Sgr A* for this configuration with noise calculated from model system parameters. After gridding the uv -plane and averaging visibilities accumulated over multiple months of integration, images of Sgr A* with a resolution of up to $4 \mu\text{as}$ could be reconstructed, allowing for stronger tests of general relativity and accretion models than with ground-based VLBI.

Keywords. Galaxy: center, techniques: interferometric, techniques: high angular resolution

1. Introduction

Sagittarius A* (Sgr A*) is a strong radio source in the Galactic Center. Infrared monitoring of stellar orbits in the Galactic Center has led to the conclusion that at the position of this radio source, there is a supermassive black hole with a mass of $4.3 \pm 0.4 \times 10^6 M_\odot$ (Ghez et al. 2008; Gillessen et al. 2009). Ray-tracing simulations of synchrotron emission originating in an accretion flow led to the prediction of the appearance of a “black hole shadow” at millimeter wavelengths (Falcke et al. 2000).

The Event Horizon Telescope (EHT) is a mm VLBI array aiming to image a black hole shadow. As the largest black hole in the sky in angular size ($53 \mu\text{as}$), Sgr A* is the most promising candidate. The other main target, with a comparable shadow size, is M87. In April 2017, the EHT conducted observations that may lead to the first black hole shadow images. These could inform us about the nature of the accretion flow (e.g. Dexter et al. 2010; Moscibrodzka et al. 2014; Broderick et al. 2016), and be used to test general relativity (e.g. Psaltis et al. 2015; Goddi et al. 2017).

Several observational constraints make setting strong limits on accretion flow parameters and the validity of general relativity a challenging task for the EHT. The array is sparse, making it challenging to produce a robust image. The angular resolution of the EHT is about $23 \mu\text{as}$, set by the observing frequency and the size of the Earth. Mizuno et al. (2018) show that this resolution is likely not high enough to distinguish between different theories of gravity, for which a resolution of $\sim 5 - 10 \mu\text{as}$ would be required. At mm and lower wavelengths, the atmosphere introduces strong phase corruptions, making it difficult to push for higher frequencies. For Sgr A*, interstellar scattering distorts the image significantly at 230 GHz. Also, rapid variability poses challenges for imaging this source (Lu et al. 2016; Johnson et al. 2017; Bouman et al. 2017).

2. Two-satellite Space VLBI concept

The effects mentioned above could be mitigated with a new Space VLBI (SVLBI) concept. An initial design study has been performed for the purpose of the Event Horizon Imager (EHI, Martin-Neira et al. 2017; Kudriashov et al. 2017). This concept involves two satellites in polar or equatorial Medium Earth Orbits (MEOs) at slightly different radii, observing at frequencies up to ~ 690 GHz. This setup results in a dense spiral-shaped uv -coverage with long baselines (Fig. 1). Because of the absence of the atmosphere, SVLBI allows for observations at higher frequencies, resulting in higher angular resolutions. At high frequencies, the emission originates closer to the black hole event horizon, producing a sharper outline of the black hole shadow due to strong lensing effects (Fig. 2). Variability of the geometry is expected to be mitigated as the observed image is dominated by lensing effects. Finally, the effect of scattering is mitigated at higher frequencies (Fig. 2).

Several technical challenges need to be overcome before the concept could turn into an actual mission. In the initial design study of Martin-Neira et al. (2017) and Kudriashov et al. (2017), correlation takes place on the fly as the satellites share their local oscillator signals over an intersatellite link (ISL). In order to set a delay window that is not prohibitively large, the satellite positions and velocities should be known to within tens of wavelengths. GNSS satellites in combination with ISL ranging measurements may be able to provide sufficient precision, but more research into the feasibility is needed. Also, sufficiently stable clocks should be installed for the interferometer to operate in the submm-regime.

3. Simulated SVLBI observations

In order to assess what image quality may be obtained with the EHI, we perform simulated observations of a time-averaged ray-traced general relativistic magnetohydrodynamics (GRMHD) source model of Sgr A* at 690 GHz from Mościbrodzka et al. (2014) (Fig. 2), using the `eht-imaging` library (Chael et al. 2016). We assume orbital radii of 13,892 and 13,913 km, which gives a maximum baseline length of $5.7 \times 10^{10} \lambda$, corresponding to a $3.6 \mu\text{as}$ angular resolution. We blur the source model with the scattering kernel appropriate for Sgr A* (Bower et al. 2006; Johnson & Gwinn 2015). Gaussian thermal noise on the complex visibilities was calculated from model system parameters as

$$\sigma = \frac{1}{0.88} \sqrt{\frac{\text{SEFD}_1 \text{SEFD}_2}{2\Delta\nu t_{\text{int}}}}, \text{ where } \text{SEFD} = \frac{2k_{\text{B}}T_{\text{sys}}}{A_{\text{eff}}},$$

$\Delta\nu$ is the observing bandwidth, t_{int} is the integration time per measurement, k_{B} is Boltzmann's constant, T_{sys} is the system temperature, and A_{eff} is the effective area of the antenna (Thompson et al. 2017). The factor $1/0.88$ results from 2-bit quantization

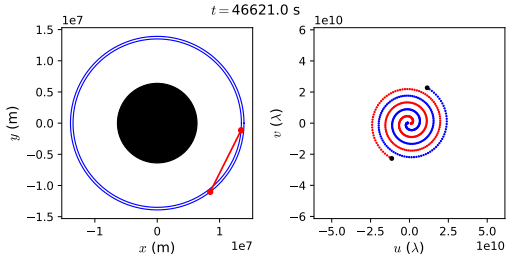


Figure 1: Example of satellite positions (left) and uv -coverage (right) for circular MEOs. Left, the satellites and baseline are shown in red, the orbits in blue, and the Earth in black. Right, the red and blue points show the uv -track for the two baseline directions. The black dots represent current uv -coordinates. From the initial satellite positions, the distance between them increases until the Earth occults the ISL. As the inner satellite catches up again, the spiral is traversed inwards.

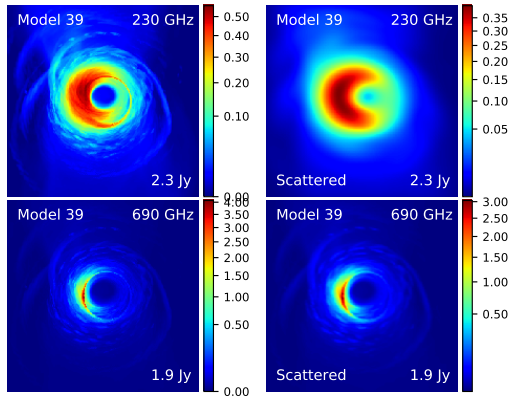


Figure 2: Time-averaged GRMHD source models of Sgr A* from Mościbrodzka et al. (2014). Images with note ‘scattered’ were convolved with the scattering kernel from Bower et al. (2006). The field of view is $210 \mu\text{as}$. Colors indicate brightness/pixel in mJy.

losses. Here, we adopt $\Delta\nu = 2.4 \text{ GHz}$, $t_{\text{int}} = 180 \text{ s}$, $T_{\text{sys}} = 513 \text{ K}$, resulting in $\sigma = 0.42 \text{ Jy}$ for 3-meter dishes and $\sigma = 0.11 \text{ Jy}$ for 6-meter dishes with efficiencies of 0.58.

For our source models, this noise figure allows for a signal-to-noise ratio (S/N) larger than 1 only on the short baselines. In order to get high S/N values on long baselines as well, we apply two strategies. We grid the uv -plane, averaging all visibilities in a single cell. Furthermore, we integrate for multiple iterations (\sim months) of the spiral. For these strategies to work in the low-S/N regime, the orbits should be determined precisely enough in post-processing to get coherent phases. Alternatively, the system noise should be reduced significantly so that traditional fringe fitting can be performed. A complication arising with long integrations is the variable character of the source. Lu et al. (2016) showed that for the EHT, an image of the average structure may be obtained by observing multiple days and averaging visibilities at equal uv -coordinates. Our strategy of gridding and averaging in the uv -plane thus helps mitigating this variability.

Figures 3 and 4 show the resulting S/N uv -maps and reconstructed images. Especially with high S/N, the black hole shadow can be reconstructed with an order of magnitude higher resolution than the EHT can achieve. In Roelofs et al. (2019), we show that this is also true for a variable source behind a variable refractive scattering screen, and that the selected orbits allow for sharp images when projection effects due to the source declination of -29° are taken into account.

4. Conclusions and outlook

We have shown that with the EHI concept, an image of the black hole shadow of Sgr A* could be made with a resolution that is an order of magnitude higher than the EHT, as many limitations of ground-based VLBI could be mitigated. More engineering studies are necessary in order to assess whether the system described here could fly within a reasonable budget. Phase offsets due to uncertainties in the satellite orbits should be included in the simulations when a detailed system model is available. The necessity of using a third satellite to form closure phases, which are immune to these corruptions, should be investigated. Also, the extent to which black hole and accretion parameters can be recovered and general relativity can be tested with this concept as compared to

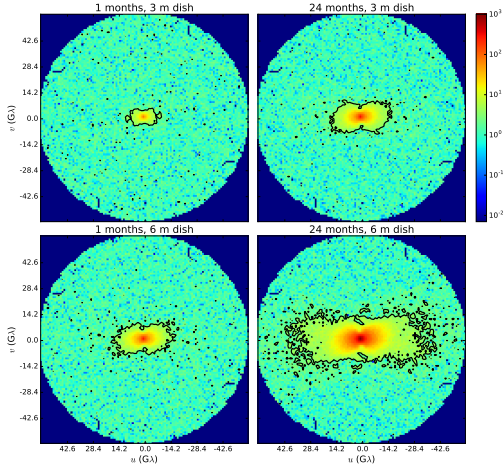


Figure 3: S/N map of the gridded visibilities of model 39 (scattered) at 690 GHz after integrating for 1 (left) and 24 (right) months, with a reflector diameter of 3 (upper panels) and 6 (lower panels) meters. Contours indicate the points with an S/N of 3.

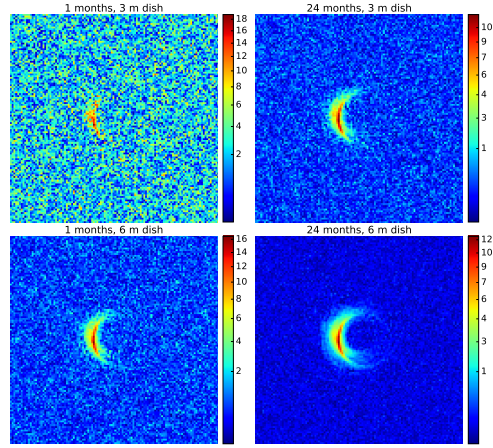


Figure 4: FFT of the gridded visibilities of model 39 (scattered) at 690 GHz after integrating for 1, 6, and 24 months (left to right), with a reflector diameter of 3 (upper panels) and 6 (lower panels) meters. The field of view is $210 \mu\text{as}$ for all images. Colors indicate brightness/pixel in mJy.

the EHT should be quantified. We also plan to investigate the EHI imaging prospects for other sources such as M87 and other AGN, and polarized GRMHD models (e.g. Gold et al. 2017; Mościbrodzka et al. 2017), using different orbital configurations for filling the uv -plane on different timescales.

This work is supported by the ERC Synergy Grant “BlackHoleCam” (Grant 610058).

References

- Bouman, K. L., Johnson, M. D., Dalca, A. V., et al. 2017, arXiv:1711.01357
- Bower, G. C., W. M. Goss, H. Falcke, et al. 2006, *ApJL*, 648:L127–L130.
- Broderick, A. E., V. L. Fish, M. D. Johnson, et al. 2016, *ApJ*, 820:137.
- Chael, A. A., M. D. Johnson, R. Narayan, et al. 2016, *ApJ*, 829:11.
- Dexter, J., E. Agol, P. C. Fragile, and J. C. McKinney 2010, *ApJ*, 717:1092–1104.
- Falcke, H., F. Melia, and E. Agol 2000, *ApJL*, 528:L13–L16.
- Ghez, A. M., S. Salim, N. N. Weinberg, et al. 2008, *ApJ*, 689:1044–1062.
- Gillessen, S., F. Eisenhauer, S. Trippe, et al. 2009, *ApJL*, 692:1075–1109.
- Goddi, C., H. Falcke, M. Kramer, et al. 2017, *IJMPD*, 26:1730001–239.
- Gold, R., J. C. McKinney, M. D. Johnson, and S. S. Doeleman 2017, *ApJ*, 837:180.
- Johnson, M. D., K. L. Bouman, L. Blackburn, et al. 2017, *ApJ*, 850:172.
- Johnson, M. D. and C. R. Gwinn 2015, *ApJ*, 805:180.
- Kudriashov, V. 2017. *International Research Fellow Final Report, ESA-TECE-TN-007251*.
- Lu, R.-S., F. Roelofs, V. L. Fish, et al. 2016, *ApJ*, 817:173.
- Martin-Neira, M., V. Kudriashov, I. Barat, et al. 2017, In *Proc. of the ARSI Workshop*, ESTEC
- Mizuno, Y., Z. Younsi, C. M. Fromm, et al. 2018, *ArXiv e-prints*.
- Mościbrodzka, M., H. Falcke, H. Shiokawa, and C. F. Gammie 2014, *A&A*, 570:A7.
- Mościbrodzka, M. and C. F. Gammie 2018, *MNRAS*, 475:43–54.
- Psaltis, D., F. Özel, C.-K. Chan, and D. P. Marrone 2015, *ApJ*, 814:115.
- Roelofs, F., Falcke, H., Brinkerink, C, et al. 2019, *A&A*, 625:A124.
- Thompson, A. R., J. M. Moran, and G. W. Swenson, Jr. 2017, *Interferometry and Synthesis in Radio Astronomy, 3rd Edition*.