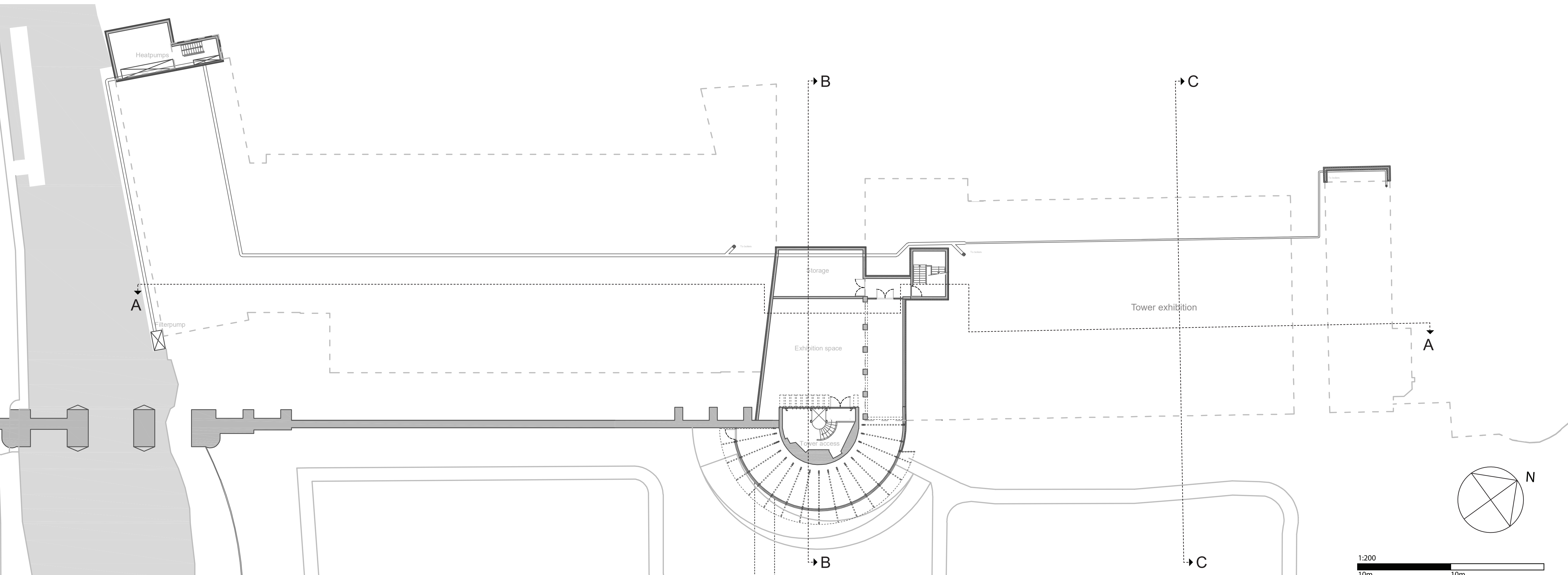


# Ground floor + context

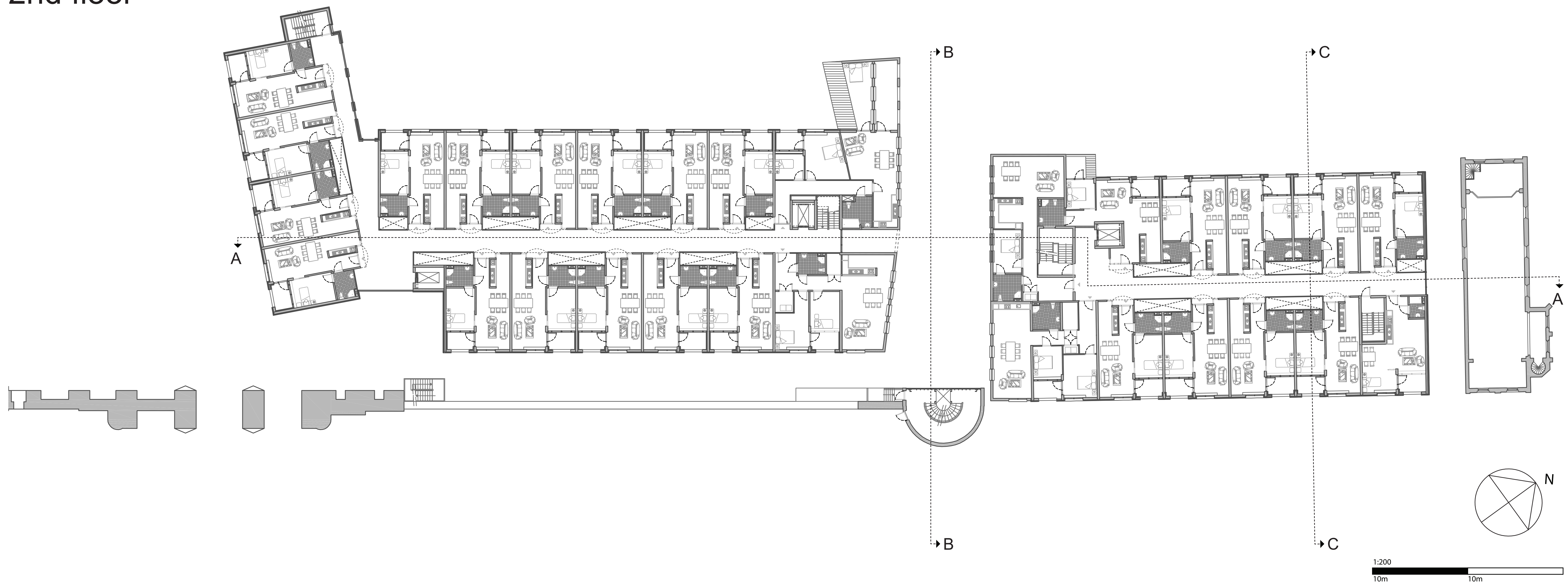


# Cellar

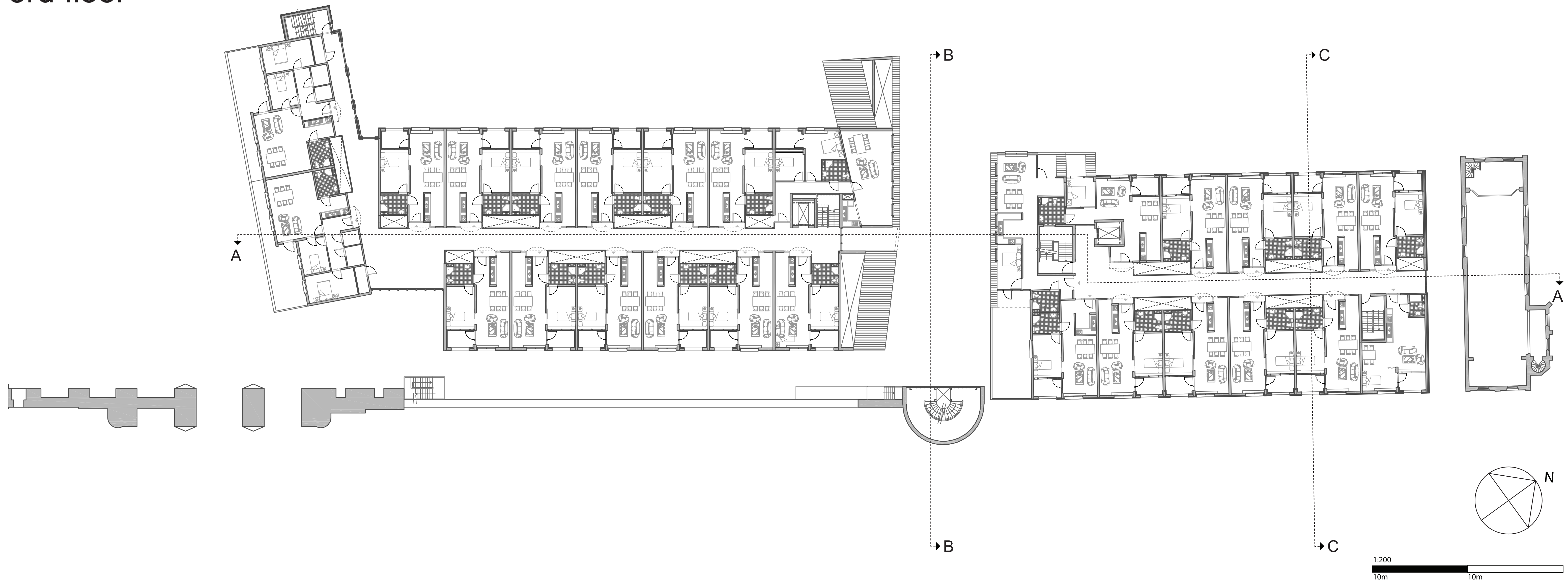


# Floors

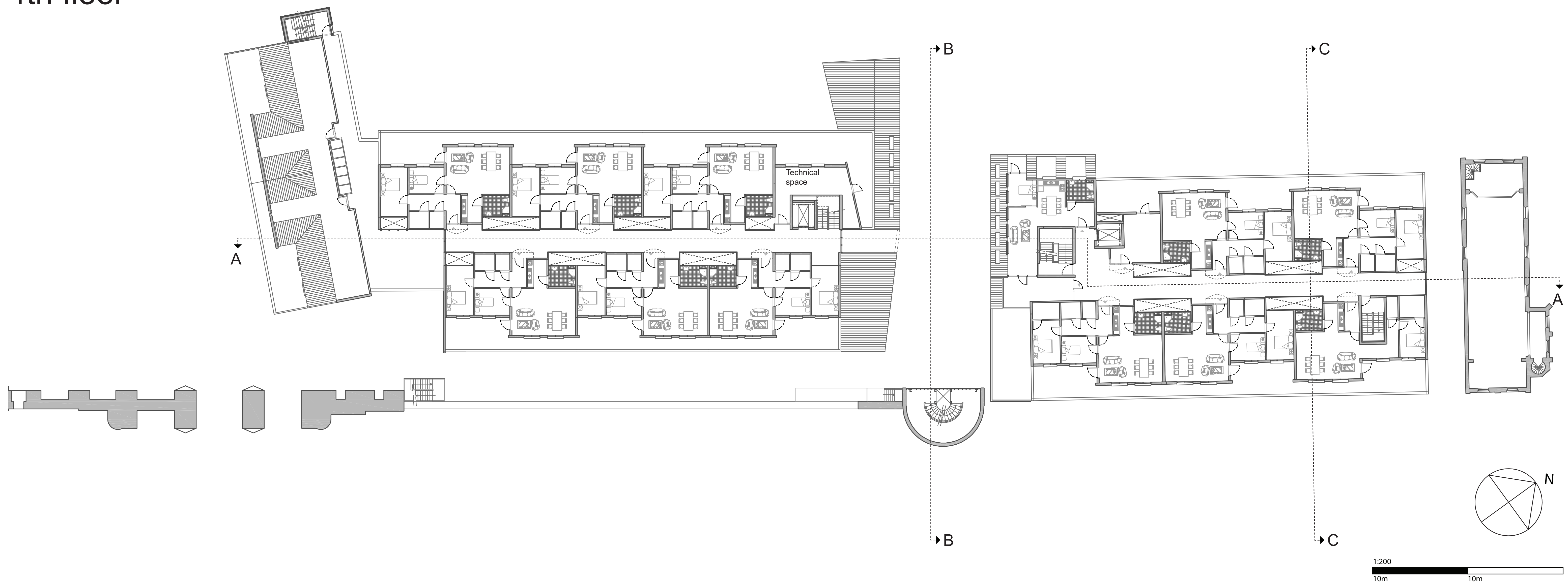
## 2nd floor



## 3rd floor



## 4th floor



# Elevations

East



West



North



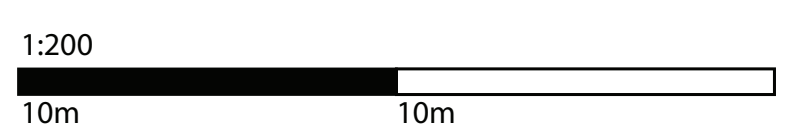
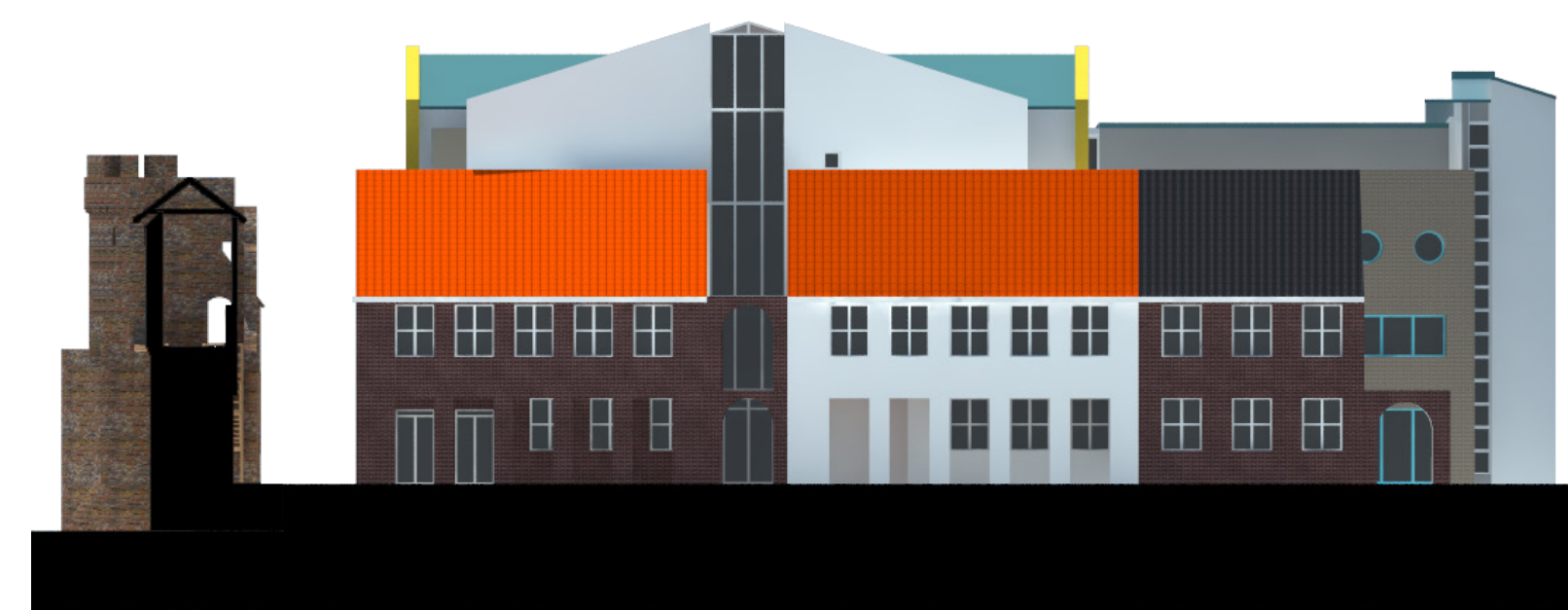
South



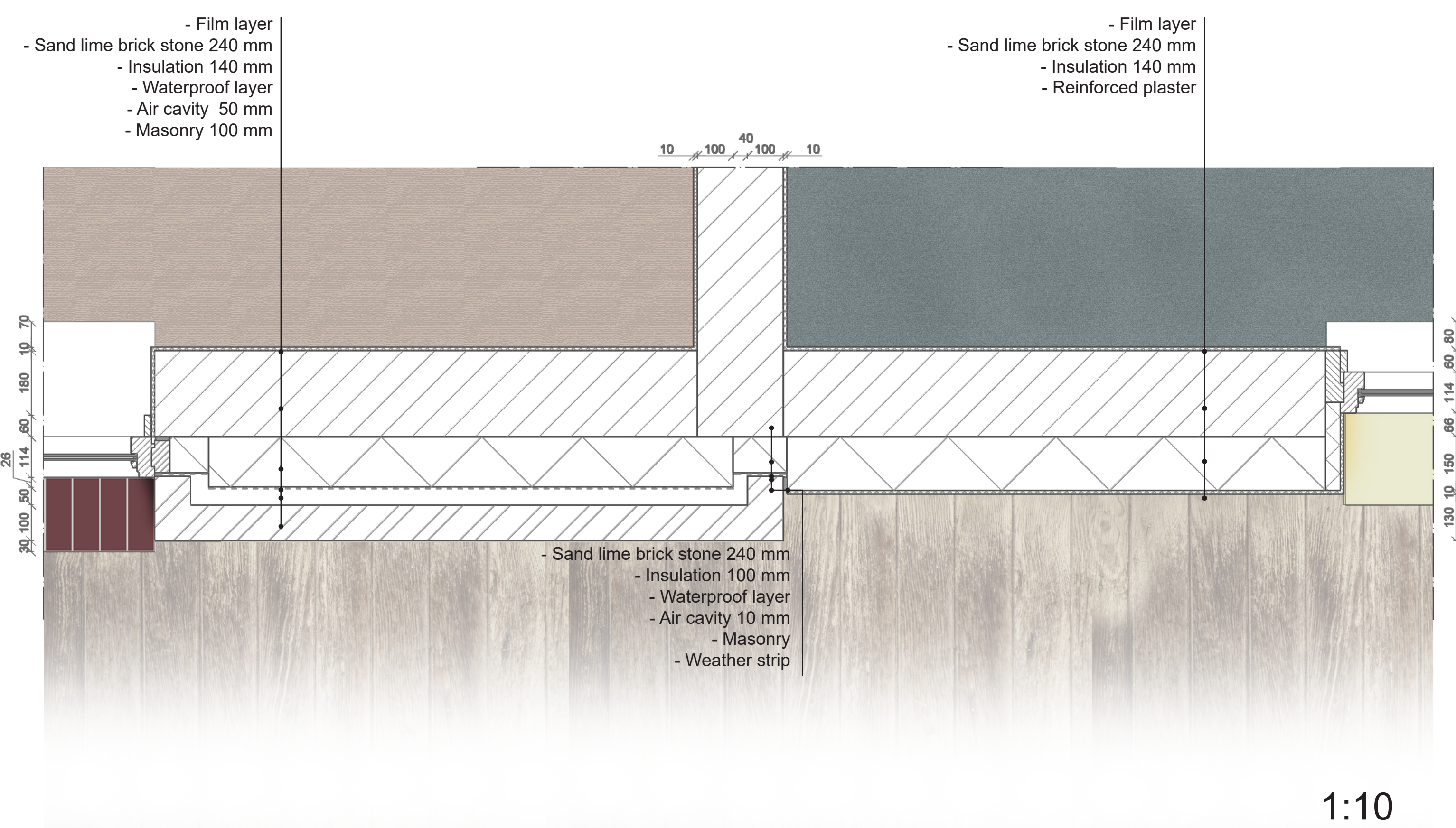
North wing entrance



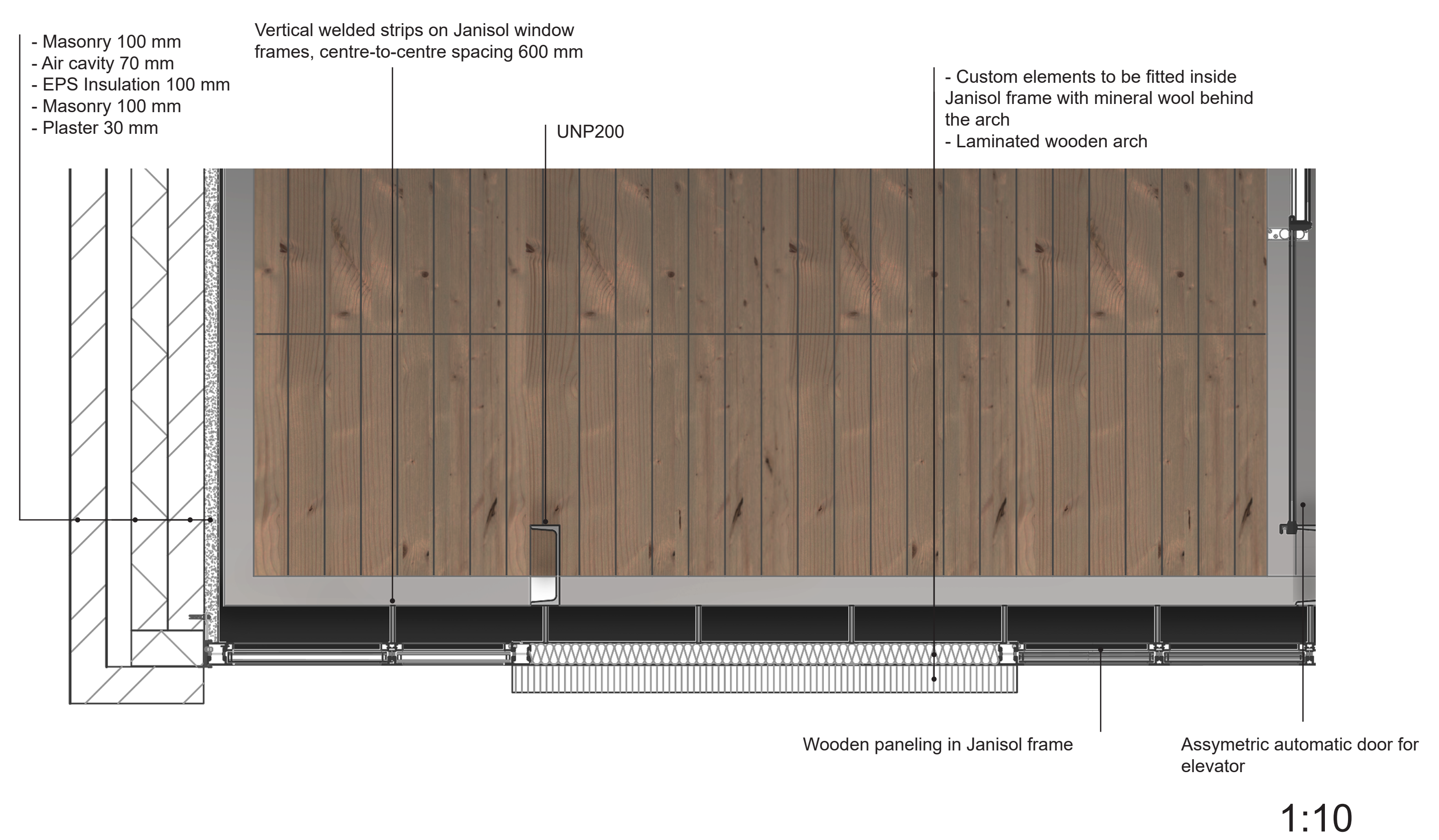
South wing entrance



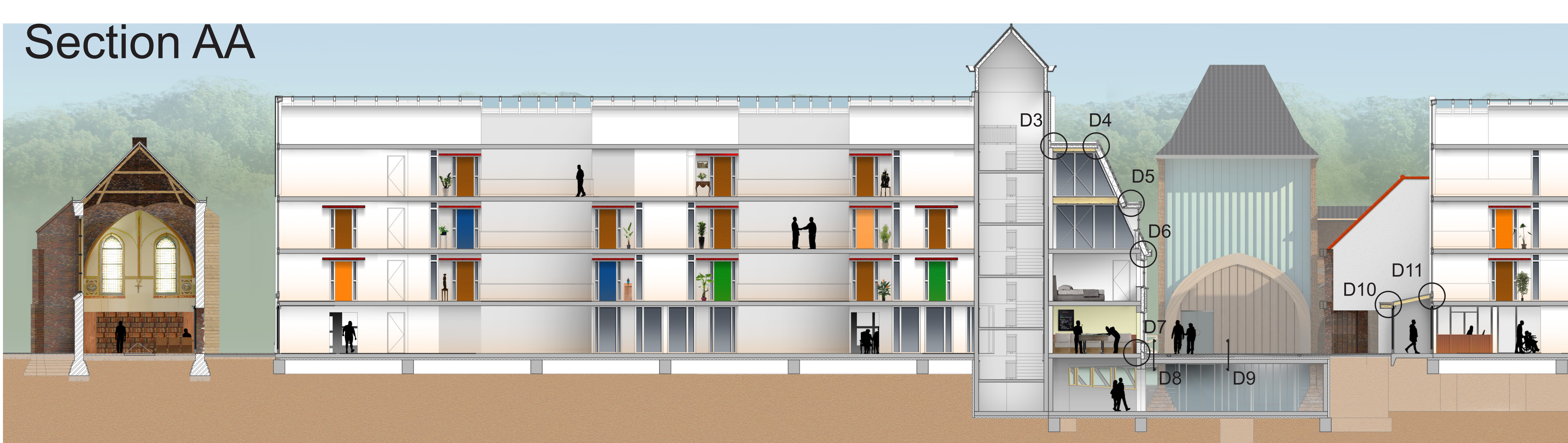
D1



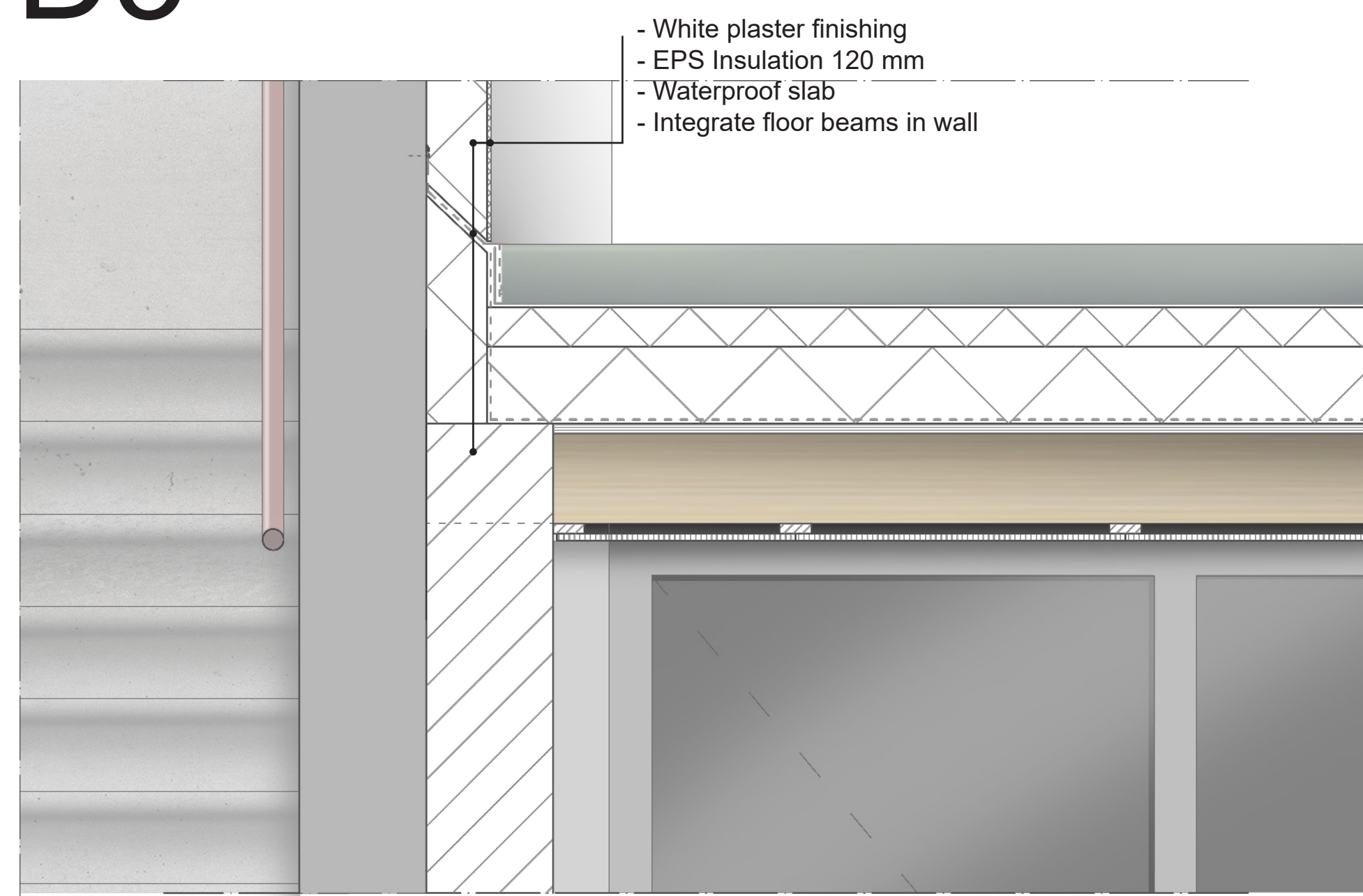
D2



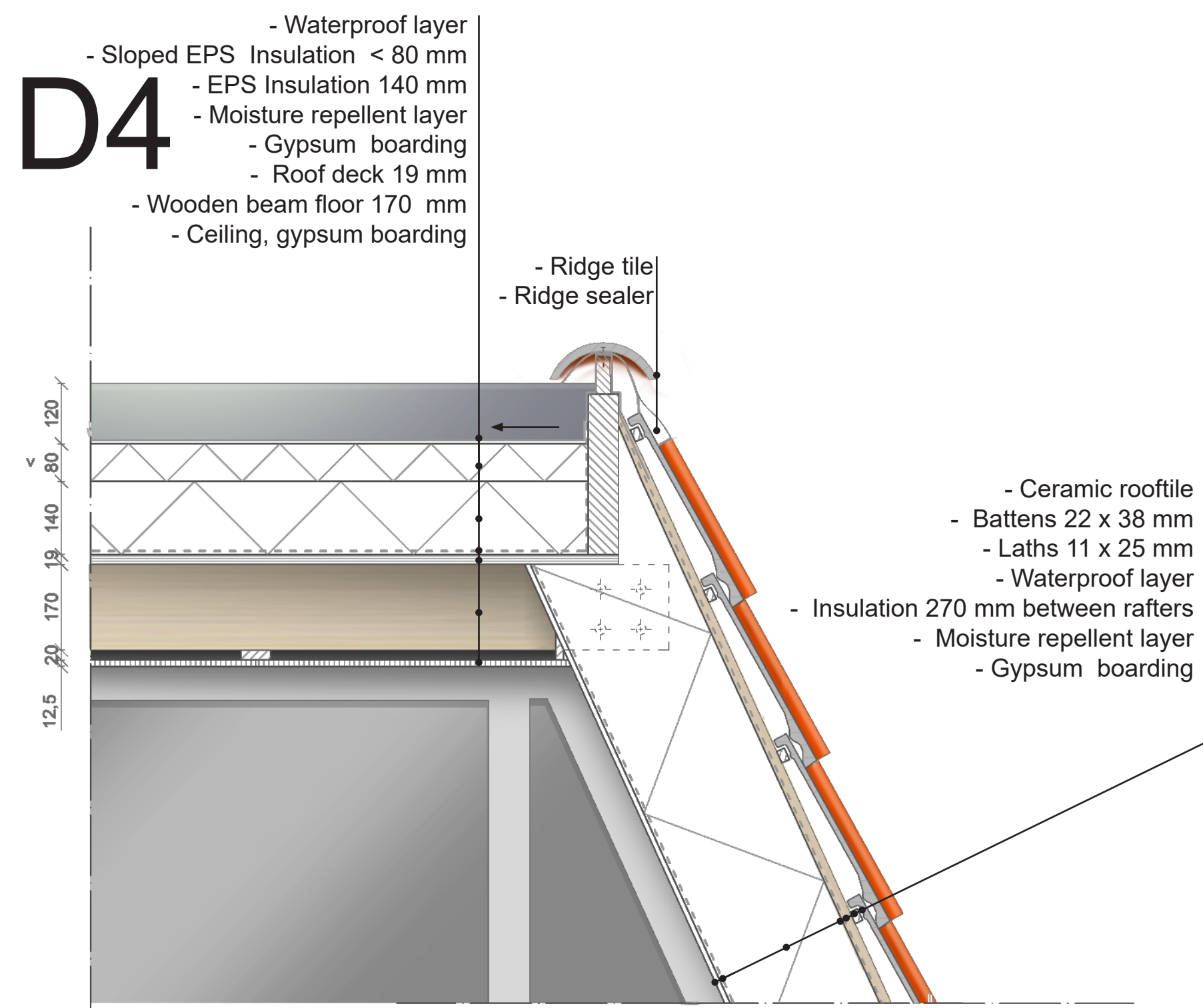
# Section AA



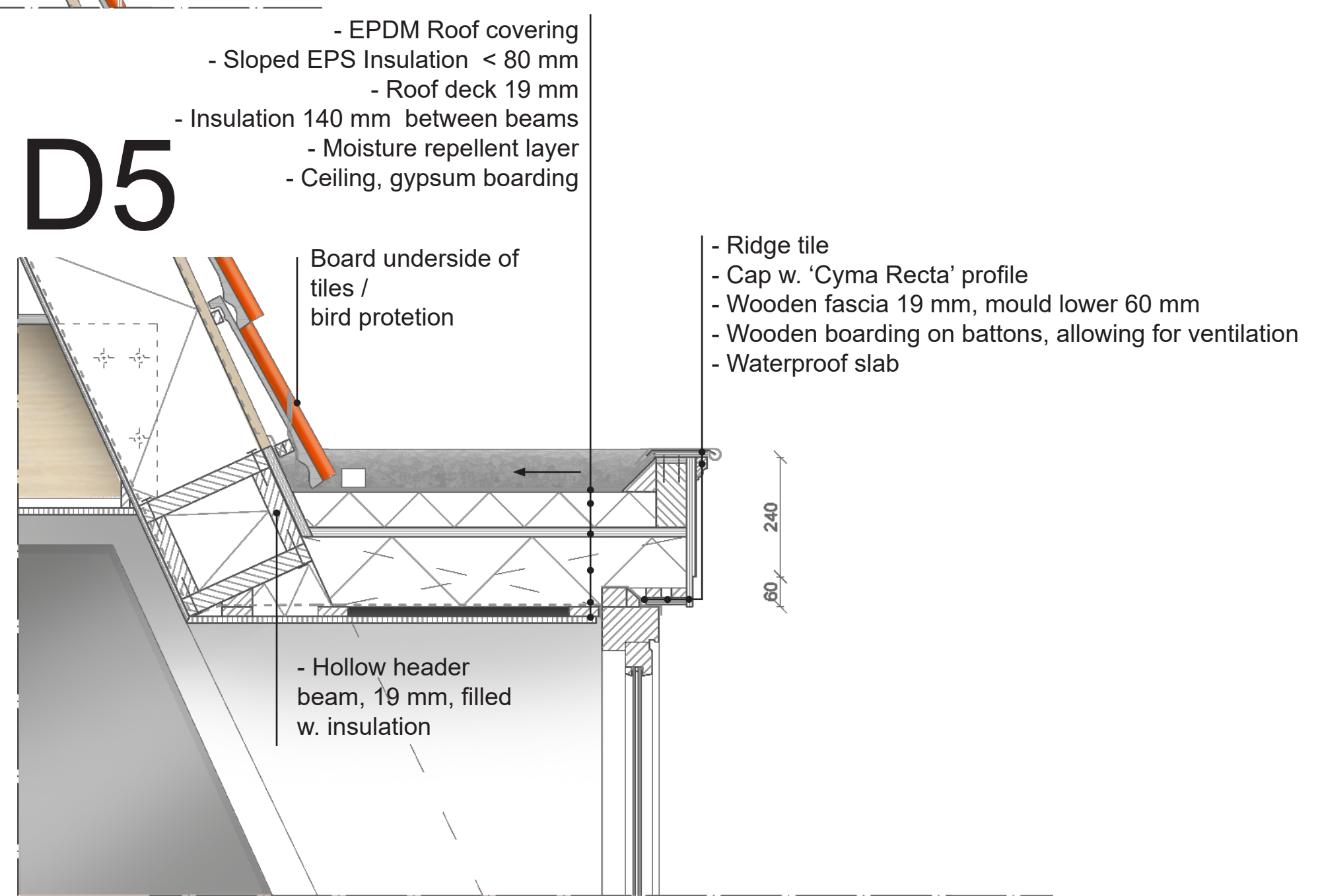
## D3



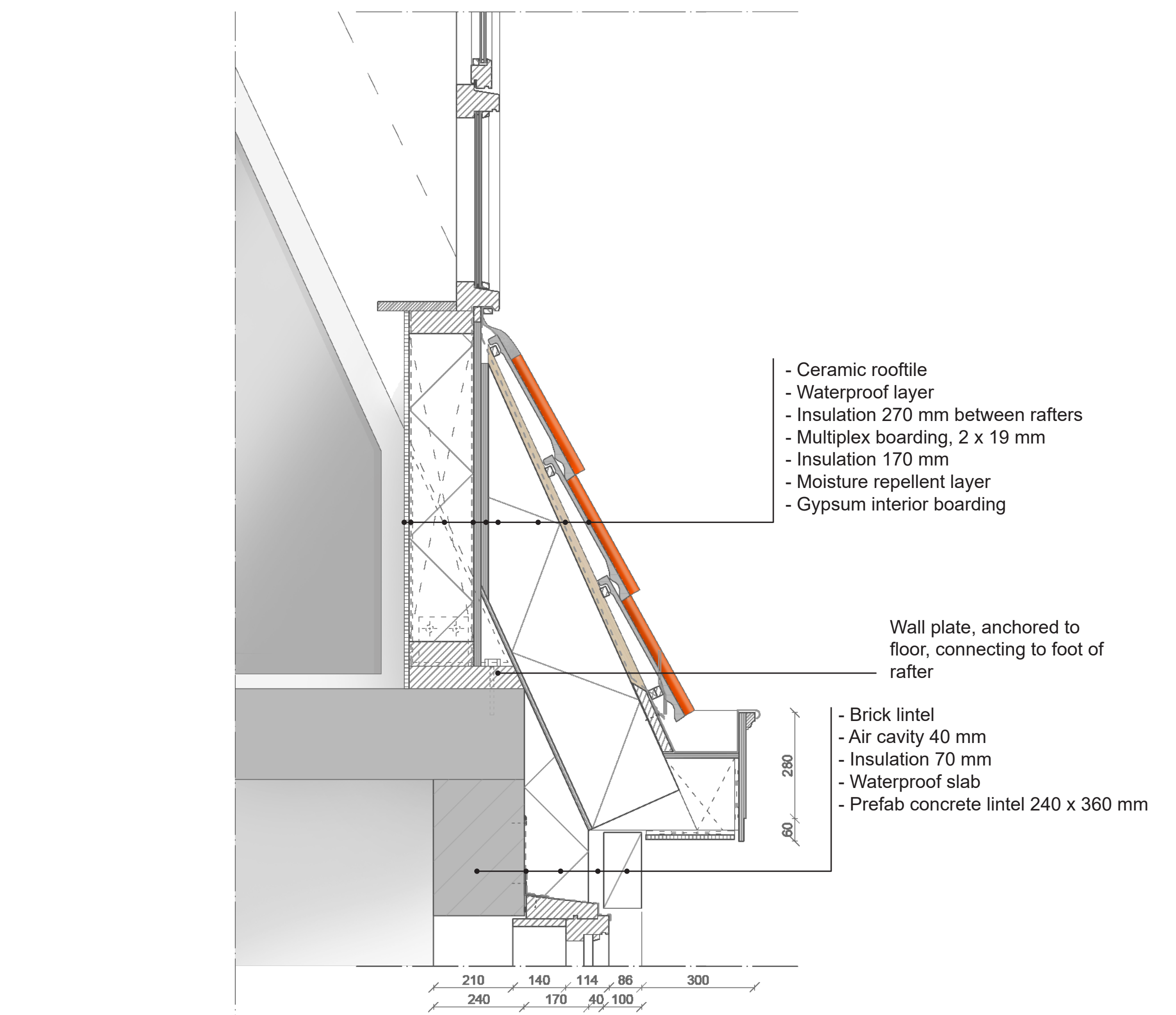
## D4



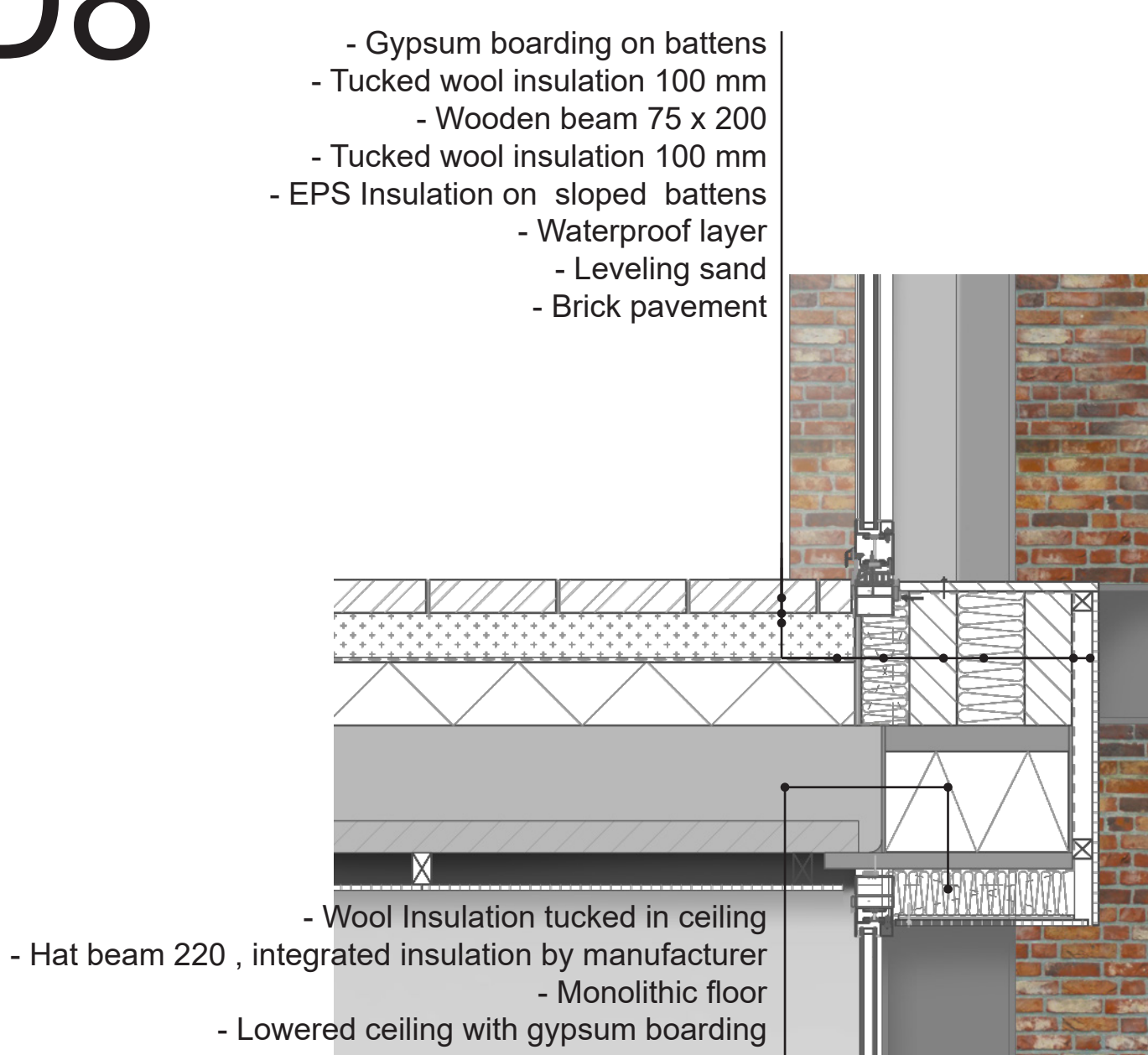
## D5



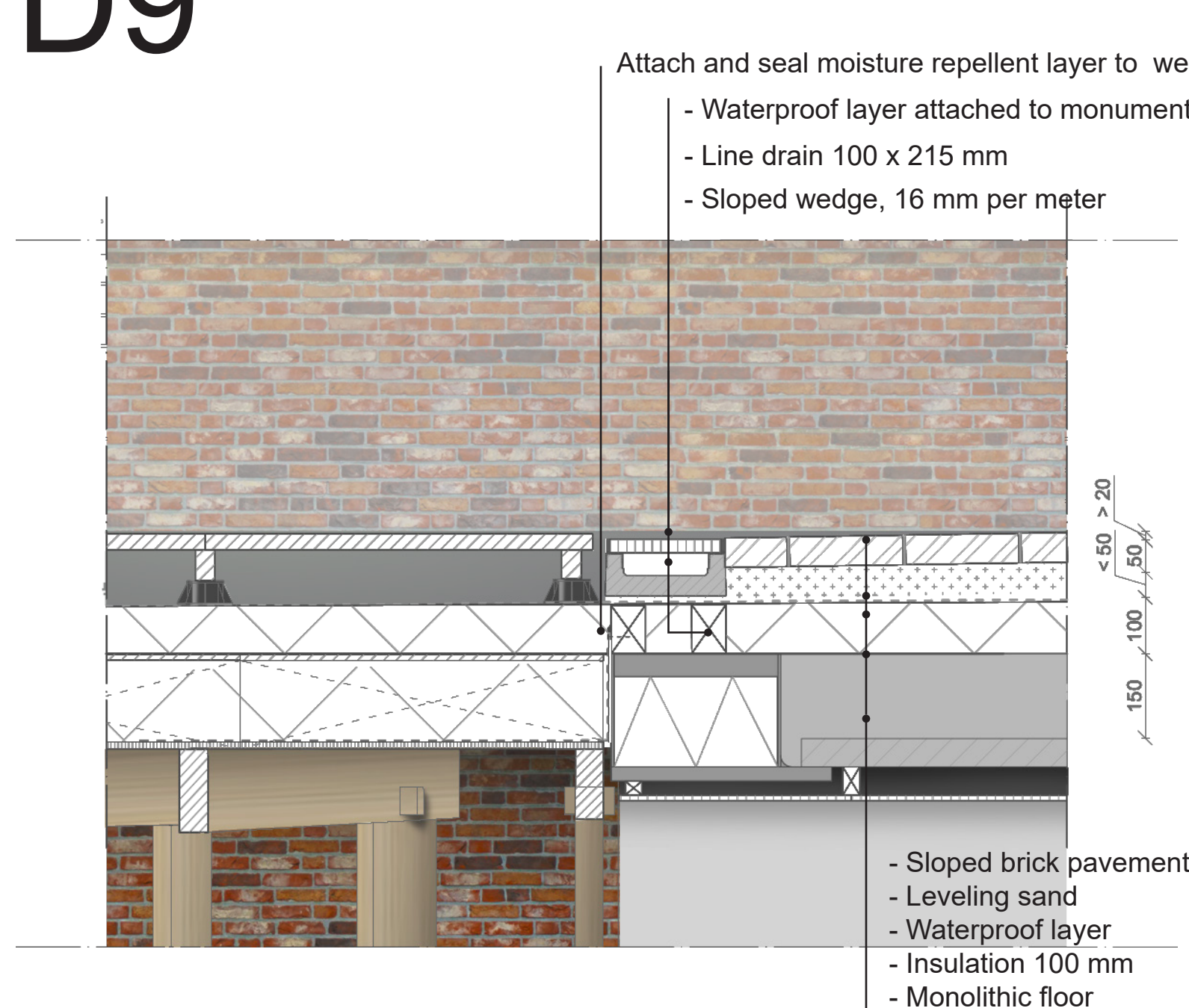
## D6



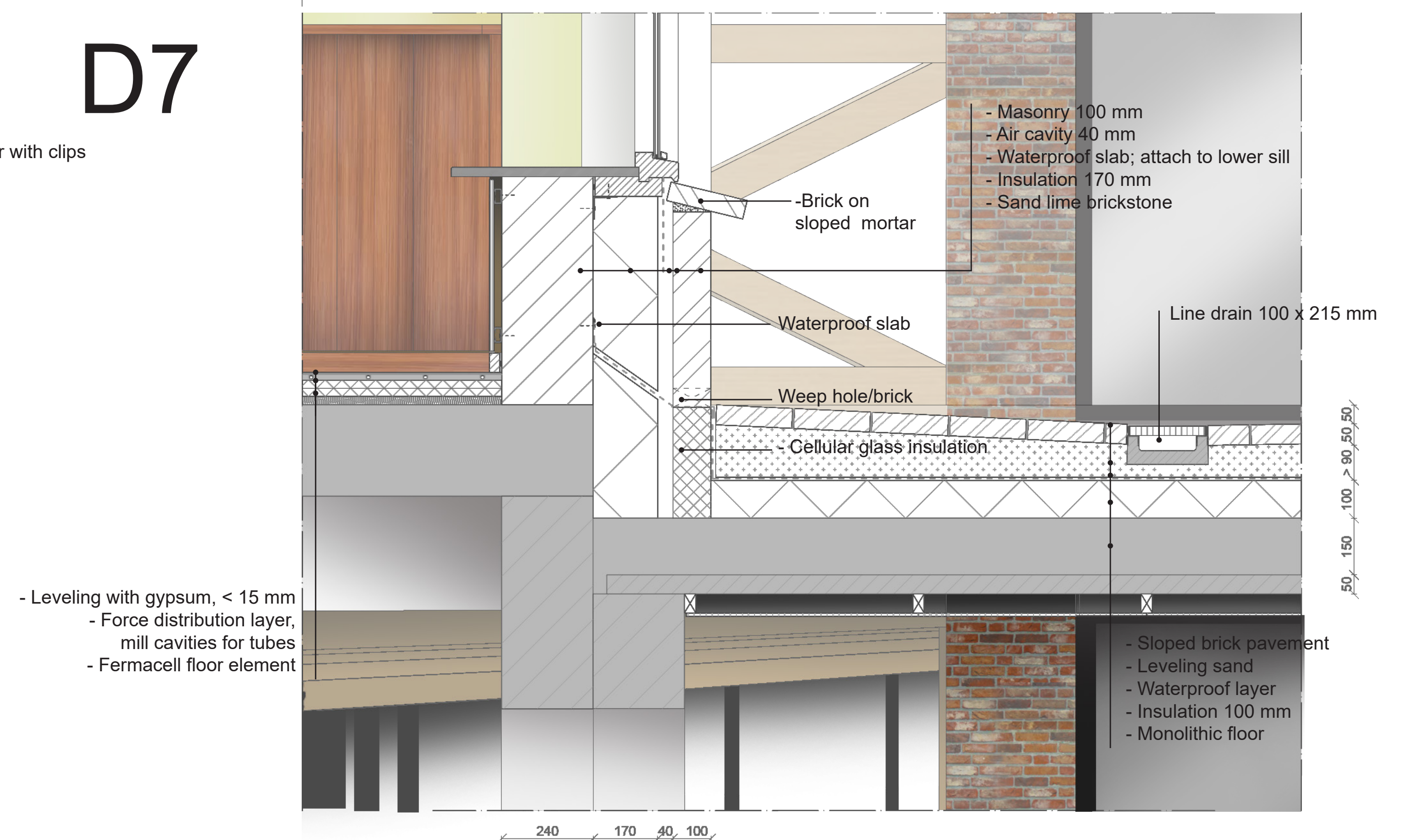
## D8

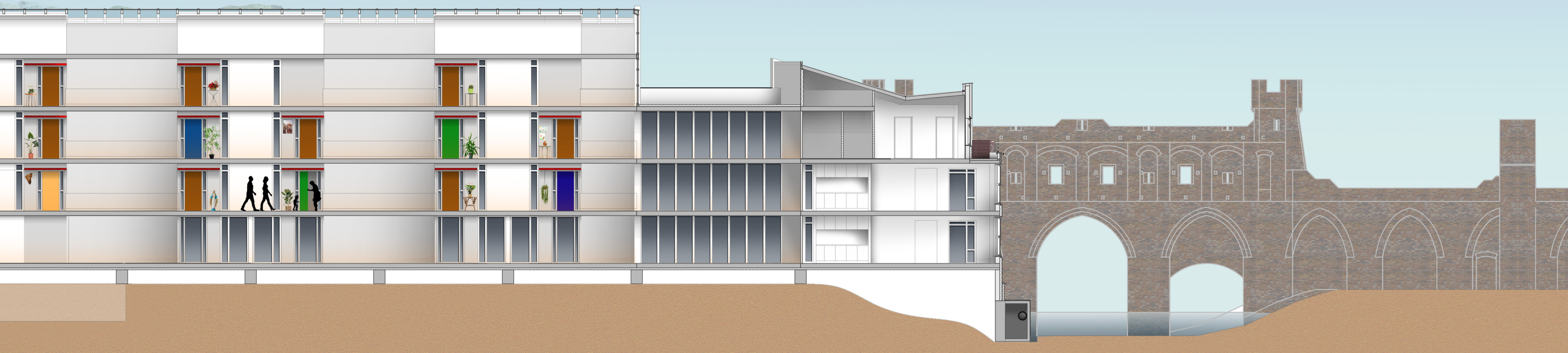


## D9



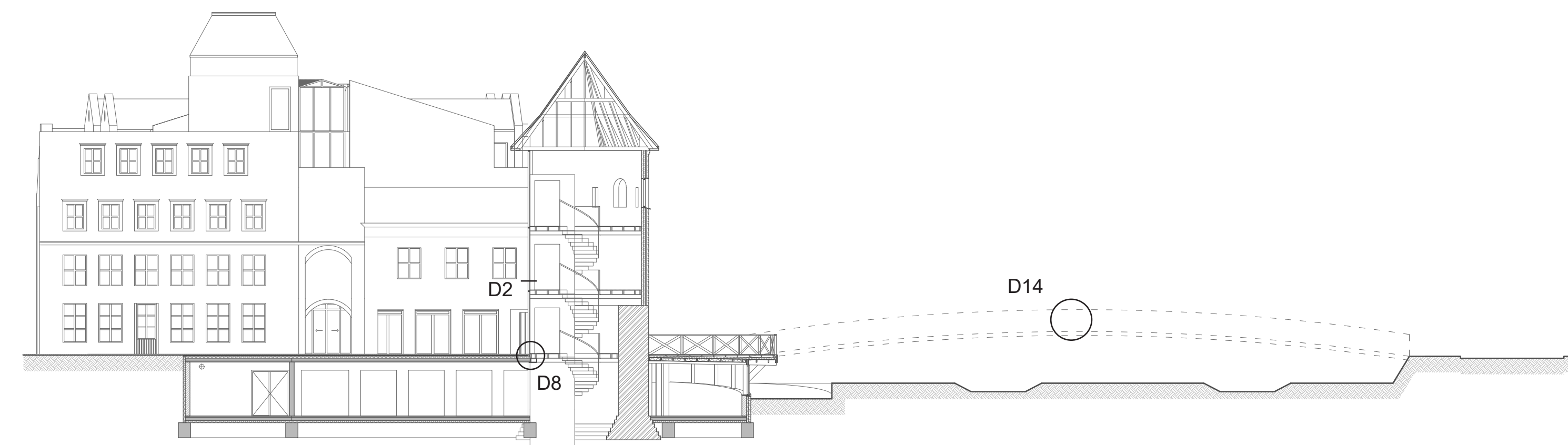
## D7





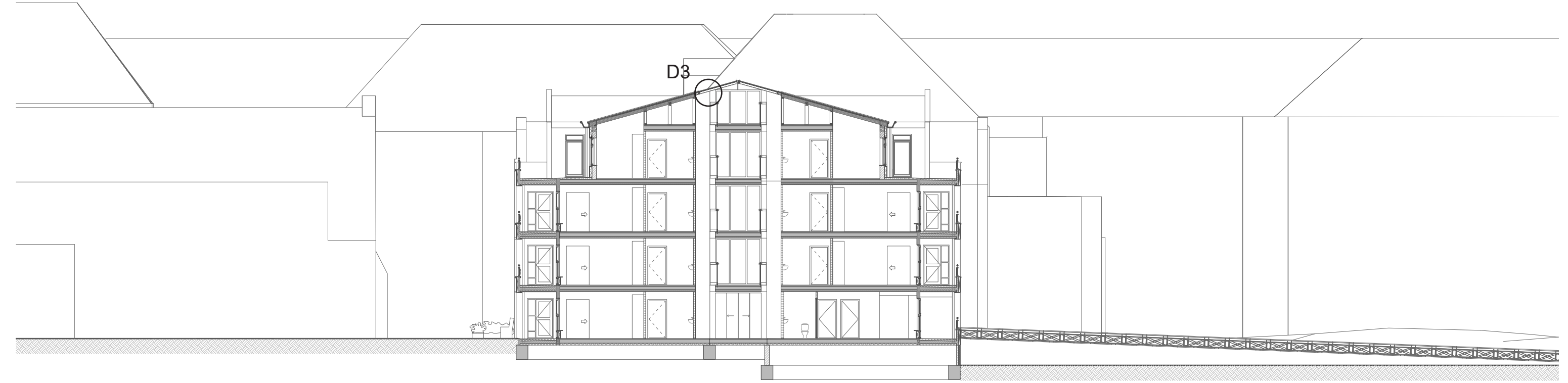
1:100  
10m 10m

Section BB



1:200  
10m 10m

Section CC



1:200  
10m 10m

D10

D11

D12

- Double glazed porch ceiling
- Wooden beam, connected to side walls
  - Waterproof layer
- Gutter deck, multiplex 12,5 mm
- Wooden beam 185 mm
- Gypsum board 22 mm

- Bravura M30 automatic door, attach to beam

- Wool insulation, covered with vapor barrier
- Wooden beamed, cut under angle
- Plaster 10 mm

- Attachment of structural glazing to wooden beam
- Custom steel element between structural glazing and interior boarding, to be produced by manufacturer

Custom steel element to serve as ridge in the structural glazing system manufacturer

877 85 105

1:10

1:10

1:10

D13

D14

D15

- Laminated wood column
- Steel connector with M60 bolts
- Concrete foundation to counter thrust; consult engineer for reinforcement

- Wooden beam 225 x 50 mm
- Joined spindle, 2x 240 x 70 mm, connected with 2 wooden dowels Ø20

- 8 steel cables Ø5, spacing of 100 mm
- Joined spindle, 2x 240 x 70 mm, connected with 2 wooden dowels Ø20

- Single-piece laminated railing, 50 x 135 mm, last layer sloped 5° to improve rain disposal

- 80 mm indent in beams for joinery

- Single-piece laminated railing, connected with wooden dowels Ø20
- Steel cables Ø5, suspend on outer spindles
- Laminated wood column, 510 mm
- Wooden deck with 225 x 44 mm beams, nailed to laminated booms
- Fixed connection with 24 steel dowels Ø20, arranged in Ø380 circle
- Laminated beam 120 x 690 mm

1880

1:10

25 25 1900 25 25

1:10

120 100 60 60 1780 60 60 220 1880

1:10