

**Understanding the carbonation of concrete with supplementary cementitious materials
a critical review by RILEM TC 281-CCC**

von Greve-Dierfeld, Stefanie; Lothenbach, Barbara; Vollpracht, Anya; Wu, Bei; Huet, Bruno; Andrade, Carmen; Medina, César; Thiel, Charlotte; Gruyaert, Elke; Vanoutrive, Hanne

DOI

[10.1617/s11527-020-01558-w](https://doi.org/10.1617/s11527-020-01558-w)

Publication date

2020

Document Version

Final published version

Published in

Materials and Structures/Materiaux et Constructions

Citation (APA)

von Greve-Dierfeld, S., Lothenbach, B., Vollpracht, A., Wu, B., Huet, B., Andrade, C., Medina, C., Thiel, C., Gruyaert, E., Vanoutrive, H., & More Authors (2020). Understanding the carbonation of concrete with supplementary cementitious materials: a critical review by RILEM TC 281-CCC. *Materials and Structures/Materiaux et Constructions*, 53(6), 1-34. Article 136. <https://doi.org/10.1617/s11527-020-01558-w>

Important note

To cite this publication, please use the final published version (if applicable).
Please check the document version above.

Copyright

Other than for strictly personal use, it is not permitted to download, forward or distribute the text or part of it, without the consent of the author(s) and/or copyright holder(s), unless the work is under an open content license such as Creative Commons.

Takedown policy

Please contact us and provide details if you believe this document breaches copyrights.
We will remove access to the work immediately and investigate your claim.



Understanding the carbonation of concrete with supplementary cementitious materials: a critical review by RILEM TC 281-CCC

Stefanie von Greve-Dierfeld · Barbara Lothenbach · Anya Vollpracht ·
Bei Wu · Bruno Huet · Carmen Andrade · César Medina ·
Charlotte Thiel · Elke Gruyaert · Hanne Vanoutrive · Isabel F. Saéz del Bosque ·
Ivan Ignjatovic · Jan Elsen · John L. Provis · Karen Scrivener ·
Karl-Christian Thienel · Kosmas Sideris · Maciej Zajac · Natalia Alderete ·
Özlem Cizer · Philip Van den Heede · Robert Douglas Hooton ·
Siham Kamali-Bernard · Susan A. Bernal · Zengfeng Zhao ·
Zhenguo Shi · Nele De Belie

Received: 13 July 2020 / Accepted: 18 September 2020
© The Author(s) 2021, corrected publication 2021

Abstract Blended cements, where Portland cement clinker is partially replaced by supplementary cementitious materials (SCMs), provide the most feasible route for reducing carbon dioxide emissions associated with concrete production. However, lowering the clinker content can lead to an increasing risk of neutralisation of the concrete pore solution and potential reinforcement corrosion due to carbonation. carbonation of concrete with SCMs differs from

carbonation of concrete solely based on Portland cement (PC). This is a consequence of the differences in the hydrate phase assemblage and pore solution chemistry, as well as the pore structure and transport properties, when varying the binder composition, age and curing conditions of the concretes. The carbonation mechanism and kinetics also depend on the saturation degree of the concrete and CO₂ partial pressure which in turn depends on exposure conditions

This article has been prepared by work group 1 and 2 within RILEM TC 281. The recommendation has been reviewed and approved by all members of the TC.

TC Members:

Chair: Nele De Belie.

Deputy Chair: Susan Bernal.

Members: Nele De Belie, Elke Gruyaert, Philip Van den Heede, Natalia Alderete, Ueli Angst, Deepankar Kumar Ashish, Veronique Baroghel-Bouny, Muhammed Basheer, Leon Black, Patrick Dangla, Susan Bernal, Aires Camões, Özlem Cizer, Martin Cyr, Vilma Ducman, Ana Fernández Jiménez, Christoph Gehlen, Mette Geiker, Gregor Gluth, R. Doug Hooton, Bruno Huet, Ivan Ignjatović, Siham Kamali-Bernard, Sylvia Kessler, Olonade Kolawole A, Tung-Chai Ling, Barbara Lothenbach, Marija Nedeljkovic, César Medina Martínez, José Fernando Martirena Hernández, Jose Pacheco, Angel Palomo, Solmoi

Park, Ravi Patel, John Provis, Francisca Puertas, Javier Sanchez, Karen Scrivener, Marijana Serdar, Kosmas Sideris, Ruben Snellings, Charlotte Thiel, Yury Villagrán Zaccardi, Anya Vollpracht, Stefanie von Greve-Dierfeld, Brant Walkley, Fazhou Wang, Ling Wang, Li Juan, Yan Yao, Guang Ye, Christian Thienel, Kei-ichi Imamoto, Fabrizio Moro, Jan Elsen, Hanne Vanoutrive, Xinyuan Ke, Andres Idiart, Luca Valentini, Maciej Zajac, Shiju Joseph, Antonis Kanellopoulos, Shishir Mundra, Quoc Tri Phung, Janez Perko, Bei Wu, Carmen Andrade, Isabel Fuencisla Saez del Bosque, Zhenguo Shi, Heejeong Kim, Katja Dombrowski-Daube, Cyrill Grengg, Anna Varzina, Bahman Ghiassi, Yogarajah Elakneswaran, Qing-feng Liu, Miren Etxeberria, Zhiyuan Liu, Zengfeng Zhao, Hans Beushausen, Cassandre Le Galliard, Ning Li, Daniel Geddes, Semion Zhutovsky, Isabel Martins.

S. von Greve-Dierfeld (✉)
TFB Technology and Research for Concrete Structures,
Wildeg, Switzerland
e-mail: stefanie.vongreve@tfb.ch



(e.g. relative humidity, volume, and duration of water in contact with the concrete surface and temperature conditions). This in turn influence the microstructural changes identified upon carbonation. This literature review, prepared by members of RILEM technical committee 281-CCC carbonation of concrete with supplementary cementitious materials, working groups 1 and 2, elucidates the effect of numerous SCM characteristics, exposure environments and curing conditions on the carbonation mechanism, kinetics and structural alterations in cementitious systems containing SCMs.

Keywords Carbonation · Supplementary cementitious materials · Aggregate · Environmental impact · Transport properties

1 Mechanisms of carbonation in cementitious hydrates, and CO₂ sequestration

This section summarises the chemical reactions occurring during carbonation of cementitious hydrate phases, and the effects of these reactions on hydrated reaction products and pore solution chemistry. In Portland cement-based systems, the term carbonation describes the reaction of dissolved carbonates with

cementitious products, mainly through interaction with calcium ions that are extracted from hydrate phases. Once CO₂ enters the material, at pH > 10, gaseous CO₂ rapidly dissolves into the alkaline pore solution and subsequently hydrolyses to bicarbonate (HCO₃[−]) and carbonate ions (CO₃^{2−}) via a multi-step reaction sequence that can be summarised as: CO₂ + OH[−] → HCO₃[−] → CO₃^{2−} + H⁺ [1, 2]. At pH < 8, direct hydration of CO₂ occurs and results in carbonic acid H₂CO₃ (via CO₂ + H₂O → H₂CO₃), which can then dissociate into HCO₃[−] and CO₃^{2−} ions [3] at higher pH. At pH 8–10, both mechanisms are important. In the pore solution the carbonate ions react with calcium ions that are re-solubilised from the solid products, and precipitate as calcium carbonate. Carbonation is a reactive transport process. The presence of water lowers the diffusion of gaseous CO₂. At the same time, the presence of water is essential for calcium and carbon dioxide to dissolve and react.

The main carbonation reaction product is calcium carbonate, which can precipitate in three crystalline polymorphs: calcite, aragonite and vaterite, depending on the internal concrete conditions (e.g. pH, temperature and supersaturation) [4], and the presence of impurities or additives [5–7]. Calcite is the most stable polymorph under ambient conditions, while metastable phases including amorphous calcium

B. Lothenbach · Z. Shi
Swiss Federal Laboratories for Materials Science and Technology (Empa), Laboratory for Concrete and Construction Chemistry, Dübendorf, Switzerland

A. Vollpracht
Faculty of Civil Engineering, Institute of Building Materials Research, RWTH Aachen University, Aachen, Germany

B. Wu
Microlab, Faculty of Civil Engineering and Geosciences, Delft University of Technology, Delft, The Netherlands

B. Huet
LafargeHolcim Innovation Center,
Saint-Quentin-Fallavier Cedex, France

C. Andrade
International Centre for Numerical Methods in Engineering (CIMNE), Barcelona, Spain

C. Medina · I. F. Saéz del Bosque
Department of Construction, Institute for Sustainable Regional Development (INTERRA), University of Extremadura, Cáceres, Spain

C. Thiel
Technical University of Munich, Center for Building Materials, Munich, Germany

E. Gruyaert · H. Vanoutrive
Department of Civil Engineering, Structural Mechanics and Building Materials, KU Leuven, Ghent, Belgium

I. Ignjatovic
Department of Materials and Structures, Faculty of Civil Engineering, Institute of Materials and structures, University of Belgrade, Belgrade, Serbia

J. Elsen
Department of Earth and Environmental Sciences, KU Leuven, Louvain, Belgium



carbonate, monohydrocalcite, vaterite and aragonite can form prior to or along with calcite precipitation (Ostwald's rule of stages) [8, 9]. Amorphous calcium carbonate and vaterite form in the early stages of atmospheric carbonation and also during carbonation in a CO₂-rich atmosphere [10, 11]. Calcite and vaterite are the most common forms of CaCO₃ found in carbonated cement paste [12, 13] at ambient or close to ambient conditions.

The formation of calcium carbonate through carbonation leads to the release of some of the water that was bound in portlandite and other hydrates, and results in changes in the total solid volume as illustrated in Fig. 1. These changes might be positive or negative dependent on the cement chemistry and can have a major impact on porosity and hence on the transport properties of the carbonated cement paste. Thermodynamic modelling of the carbonation of hydrated cement can be used to understand the pH changes and the destabilisation sequence of the different Portland cement hydrated products. The thermodynamic model depicted in Fig. 1 shows the phase assemblage of a white Portland cement as a function of the amount of CO₂ that has reacted with the cement paste, and the corresponding decrease of pH and of the Ca/Si ratio of the calcium silicate hydrate

(C–S–H). Carbonation proceeds according to the following steps:

- Initially any monosulfate- and hemicarbonate-AFm phases, if present, will destabilise to monocarbonate-AFm [14], leading to small changes of the solid volume (molar volume of monosulphate: 332 cm³/mol; hemicarbonate: 285 cm³/mol and monocarbonate-AFm: 262 cm³/mol) (not shown in Fig. 1).
- Portlandite is the first major hydrate that decomposes to calcium carbonate during carbonation, leading to a moderate volume increase ($\Delta V = 12\%$ of portlandite) as the molar volume of calcite (36.9 cm³/mol) is greater than that of portlandite (33.0 cm³/mol). The pH remains stable at around ~ 12.5 [12].
- After all accessible portlandite is consumed, C–S–H starts to decalcify down to a Ca/Si ratio of ~ 1.3 . The pH decreases only marginally during this step. This decalcification is not accompanied by significant volume change.
- Monocarbonate decomposes to strätlingite, which accommodates the released aluminium and silicon from the C–S–H; C–S–H continues to be consumed without change of its Ca/Si ratio. This reaction also leads to some changes of the solid volume. The molar volume of monocarbonate (262 cm³/mol) is greater than that of strätlingite (216 cm³/mol), which is compensated by the

J. L. Provis

Department of Materials Science and Engineering,
University of Sheffield, Sheffield S1 3JD, UK

K. Scrivener

Construction Materials Laboratory, École polytechnique
fédérale de Lausanne, Lausanne, Switzerland

K.-C. Thienel

Department of Civil Engineering and Environmental
Sciences, University of the Bundeswehr Munich,
Neubiberg, Germany

K. Sideris

Department of Civil Engineering, Democritus University
of Thrace, Xanthi, Greece

M. Zajac

Global R&D, HeidelbergCement AG, Leimen, Germany

N. Alderete · P. Van den Heede · N. De Belie

Department of Structural Engineering and Building
Materials, Ghent University, Ghent, Belgium

Ö. Cizer

Departement of Civil Engineering, KU Leuven, Louvain,
Belgium

R. D. Hooton

Department of Civil and Mineral Engineering, University
of Toronto, Toronto, Canada

S. Kamali-Bernard

National Institute of Applied Sciences of Rennes, Rennes,
France

S. A. Bernal

School of Civil Engineering, University of Leeds, Leeds,
UK

Z. Zhao

Building Materials, Urban and Environment Research,
University of Liège, Liège, Belgium



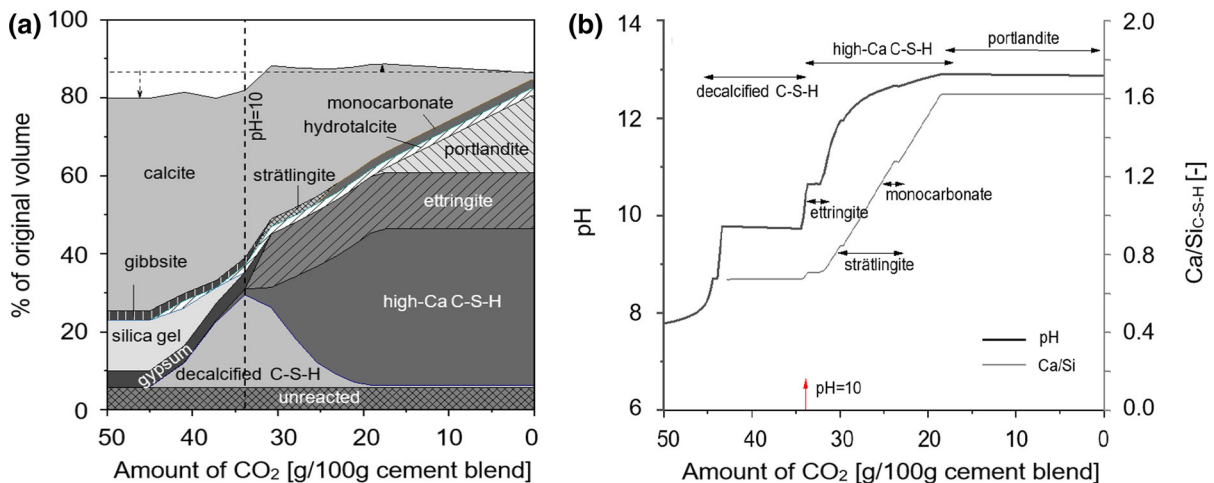


Fig. 1 Thermodynamic modelling of the phase assemblage during carbonation of a white PC $w/b = 0.5$ and degree of hydration 90% (a), and changes of pH and Ca/Si of the C–S–H

formation of calcium carbonate and consumption of C–S–H.

- After monocarbonate is consumed, the decalcification and decomposition of the C–S–H continues down to Ca/Si of ~ 0.75 and pH of ~ 11 . This step is accompanied by the largest drop in pH.
- Upon further carbonation strätlingite decomposes, followed by ettringite at pH around 10. The released aluminium and sulphur are bound in aluminium hydroxide or zeolites [15] and gypsum, respectively. In parallel, the C–S–H decalcifies to Ca/Si of around 0.67 while the pH is lowered to 10.
- Upon further carbonation, C–S–H decomposed into calcite and hydrated amorphous silica and the pH drops rapidly below 10 to 8.5.
- At the final stage, hydrotalcite decomposes at pH around 8.5.
- The total CO₂ bound is around 40 to 50 g CO₂/100 g Portland cement.

The same sequence of destabilisation is also observed in PC blended with fly ash [15], metakaolin [16] and in calcium sulfoaluminate cements [14]. The consumption of calcium during the carbonation reaction lowers the pH in pore solution from initially 13.5 to 14 (in the absence of carbonation) to below 8, when the cement hydrates have completely carbonated. This decrease happens stepwise, as the pH is buffered by different hydrate assemblages, which are destabilised [17–20]. This buffering capacity, i.e. the amount of

during carbonation (b). In both graphics, the undamaged cement paste is shown on the right-hand side, moving to the left as more CO₂ reacts with the hydrates. Adapted from [16]

calcium oxide available, as well as the buffered pH depend on the type of the hydrates [14, 21].

It is worth noting, however, that under real carbonation exposure conditions different steps might occur simultaneously, and/or may halt before completion for kinetic or microstructural reasons, although the general sequence will be the same as indicated by thermodynamic modelling. For example, it has often been observed that not all portlandite and C–S–H are carbonated, particularly at low RH [13, 22, 23]. From a thermodynamic point of view initially no C–S–H should decalcify, which does not agree with what has been reported in real carbonated pastes [24, 25].

Portlandite carbonation occurs as a consequence of a dissolution–precipitation reaction and the reaction kinetic is initially more rapid than the carbonation of C–S–H [13]. Calcium carbonate grows on the portlandite surfaces as illustrated in Fig. 2, which slows down the further carbonation by limiting the transport of water and CO₂ [22, 23]. CH carbonation releases water, while C–S–H loses water mainly upon complete carbonation [27].

The most abundant calcium-bearing phase in hydrated cement paste is C–S–H, and this is also the phase that displays the most complex carbonation behaviour. The carbonation process of C–S–H depends on its original Ca/Si ratio, CO₂ concentration, and on the presence of portlandite [28]. The C–S–H carbonation proceeds in steps; first CaO is removed from the interlayer space. The initially short silicate

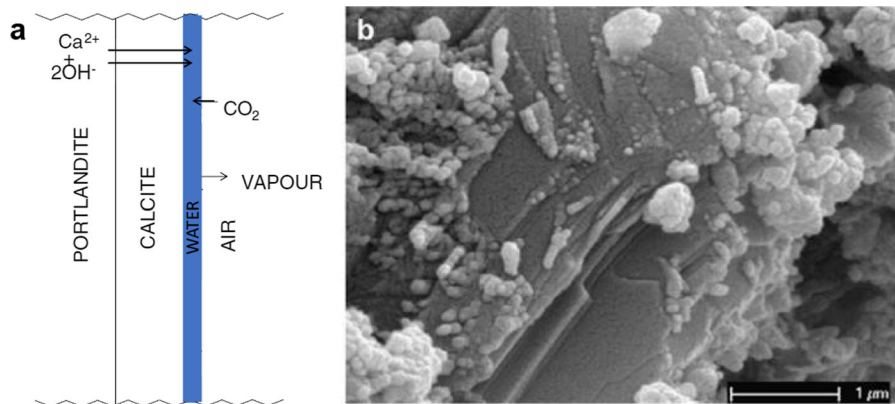


Fig. 2 **a** Schematic of diffusion through calcium carbonate layer formed on the top of portlandite during carbonation, from [22]; **b** formation of calcite on the basal faces of portlandite, from [23]

chains present in high-Ca C–S–H become longer until a C–S–H with a very low Ca/Si ratio of around 0.7 and a pH value of 10 is reached. Only then is the main CaO in C–S–H also consumed, leading to the formation of amorphous silica [11, 29] and further reduction of pH to around 8.5. The destabilisation of C–S–H to silica gel, however, often remains incomplete, particularly at lower relative humidity [27, 30].

The extent of C–S–H carbonation also depends on the CO₂ concentration [31]. Above 3% of CO₂ in the gas phase, C–S–H can fully decompose into calcium-modified silica gel, while below this concentration, partially decalcified C–S–H was found after the “completion” of carbonation [29–32]. The behaviour of C–S–H gels also varies depending on Ca/Si, due to the composition dependence of the thermodynamic stability of C–S–H [33].

Initial C–S–H decalcification, involving interlayer calcium, is not accompanied by significant volume changes (see Fig. 1), and C–S–H carbonation can thus contribute significantly to the densification of cement paste microstructure by calcite precipitation. However, below a Ca/Si ratio of ~ 1.3 , significant decalcification shrinkage has been observed [34]. The fine-textured initial microstructure of C–S–H is preserved after the initial decalcification [35], and both inner and outer C–S–H undergo a comparable decalcification although only outer C–S–H shows morphological changes upon decalcification [35]. These morphological changes involve coarsening of the porosity and precipitation of calcium carbonate at the tips of the C–S–H fibrils. Carbonation shrinkage has been observed to increase with CO₂ concentration and with

decreasing Ca/Si ratio, and shows a maximum at high to moderate relative humidity [36], mainly attributed to the polymerisation of C–S–H.

The total amount of CO₂ that can be bound (binding or buffering capacity of a cement) depends directly on the amount of CaO available to form CaCO₃ [9, 12, 23, 37], i.e., all CaO in the hydrates minus calcium bound in calcium carbonate or calcium sulfates. Thus, the CO₂ binding capacity of blended cements and calcium sulfoaluminate cements is generally lower than that of plain PC, since the available CaO content is lower [14, 16–21]. Additionally, a lower degree of carbonation of portlandite and calcium silicate hydrate in specific conditions alters the buffering capacity. These differences mean that a direct application of the understanding of the carbonation mechanism and CO₂ binding capacity for plain PC cannot be used to infer how concretes with SCMs will perform when exposed to different environments.

2 Carbonation kinetics and carbonation coefficient

The dependence of carbonation resistance on CO₂ diffusion and the amount of carbonatable matter is also clear from the well-known square-root-time relation (Eq. 1) for carbonation rate, mentioned in various literature including [38–40], which is essentially a solution to Fick’s first law of diffusion.

$$X_c(t) = \sqrt{\frac{2 \cdot D_c \cdot c_s \cdot t}{a_c}} = \sqrt{\frac{2 \cdot c_s \cdot t}{R_{carb}}} = k \cdot \sqrt{t} \quad (1)$$

Here x_c is the carbonation depth (m), D_c is the diffusion coefficient of CO_2 (m^2/s), c_s is the CO_2 concentration at the concrete surface (kg/m^3), a_c is the amount of carbonatable material per unit volume (kg/m^3), t is the time (s), $R_{\text{carb}} (= a_c/D_c)$ is the carbonation resistance ($(\text{kg}/\text{m}^3)/(\text{m}^2/\text{s})$), and $k (= \sqrt{(2 \cdot c_s/R_{\text{carb}})})$ is the carbonation coefficient ($\text{m}/\sqrt{\text{s}}$). Equation (1) assumes a linear decline of CO_2 concentration across the surface layer, from the CO_2 concentration at the concrete surface (c_s), down to the concentration at the carbonation front, which has a negligible value. The carbonation progress is accelerated with increasing CO_2 concentration (c_s) and increasing CO_2 diffusion coefficient (D_c) but slows down with increasing amount of carbonatable material (a_c).

The formula containing the carbonation coefficient k in Eq. (1) is commonly used in experimental studies. When plotting carbonation depths as a function of the square-root of the exposure time, a more or less linear relationship is obtained, the slope of which is taken as the carbonation coefficient.

It should be noted, though, that Eq. 1 assumes a steady-state condition (i.e. constant carbonation coefficient). However, since carbonation reaction products tend to block the pores in concrete and cause a reduction in gas diffusivity, and because cementitious materials continue to hydrate and refine the pores inside the material, the carbonation coefficient should decrease with time (or depth). When carbonation coefficient becomes time dependent, Eq. 2 can be applied as used in [41, 42].

$$k(t) = k_0 \cdot t^n \quad (2)$$

Here the exponent n should be negative, to account for pore blockage by reaction products, wetting events, increased moisture content and ageing effects; a value of zero would define pure diffusion control and an unchanging material, neither with depth nor time. A positive value indicates that the material dries out and/or cracks due to carbonation shrinkage. The empirical exponent n was found to be between 0.0 and -0.2 in [42]. They observed that n depends on curing duration and binder type. Hunkeler and Greve-Dierfeld [43] showed for three days water cured samples a decrease in n with decreasing w/b ratio and increasing relative humidity.

The carbonation resistance of a cement paste or a concrete—which is usually expressed in terms of the

depth to which atmospheric CO_2 has penetrated the material at a given time, or as a coefficient describing this rate of ingress—depends not only on its CO_2 binding capacity, but also on its porosity and pore size distribution [16, 21, 44]. Changes in the effective permeability due to hydrate/carbonate volume changes and microcracking can be a significant consequence of carbonation [45]. In concretes with conventional SCMs, an increase in porosity upon carbonation is typically reported, in contrast to plain PC systems where carbonation decreases their permeability due to pore blocking as discussed above [46]. However, the correlation between the hydrate products in blended PCs and the associated volume and permeability changes is not yet clear. Of more concern, it is not clear what mechanism is leading to microcracking, and to what extent these microcracks might modify the transport properties of the carbonated layer, reducing the resistance to ingress of CO_2 . Due to the large variety of SCMs used in the production of modern concretes and the broad range of properties exhibited by concretes produced with them, in the following sections the main effects of the type and amount of SCM added are discussed, as well as the influence of concrete mix design parameters and other factors on the carbonation process of SCM-containing materials.

3 Concrete mix design and its effect on carbonation

3.1 Effect of SCM type

When PC is blended with SCMs, the phase assemblages and chemistry of the pore solution change significantly. In PC blended with siliceous SCMs, a reduced content of portlandite is present, as consequence of pozzolanic or latent-hydraulic reactions. The main reaction product observed is an Al-substituted C–S–H type phase, with lower Ca/Si than in plain PC systems [47]. Formation of different secondary reaction products such as layered double hydroxides (e.g. AFm phases and Mg–Al hydroxides) is also reported when using Al-rich SCMs [48].

The effect of SCMs on the chemistry and properties of cementitious materials has been extensively evaluated, including by recent RILEM technical committees, and the reader can find more detailed information



in [49–51]. In this review a brief description of the chemistry of SCM-blended cements is presented to explain potential correlations between material properties and carbonation performance.

Addition of SCMs can increase the early reactivity of PC clinker due to its (physical) filler effect promoting nucleation and growth of the hydrates, and the higher effective water/cement (w/c) ratio [52, 53]. In the pozzolanic reaction SiO_2 and Al_2O_3 react with water and CH to form additional C–S–H with a reduced Ca/Si ratio, an increased silicate mean chain length, and some incorporation of Al [54–56]. Thermodynamic calculations indicate that for complete consumption of portlandite, the required ratio of SCM to total binder content is approximately 75 wt% for blast furnace slag (BFS) [44, 53], 35 wt% for Class F/siliceous fly ash (FA), 18 wt% for silica fume (SF) [47, 57, 58] and 6–18 wt% for metakaolin (MK) [59], although microstructural (kinetic) constraints can lead to the persistence of portlandite at higher SCM contents than would be indicated from thermodynamics alone [60]. The consumption of portlandite leads to a reduced pH value in the pore solution, which is in the range of $\text{pH}_{\text{PC,LS}} \approx 12.7\text{--}13.8$, $\text{pH}_{\text{BFS,FA,MK}} \approx 12\text{--}13$, $\text{pH}_{\text{SF}} \approx 11.0\text{--}12.5$ at high clinker replacement levels, according to [57, 61, 62] and is accompanied by reduced K^+ and Na^+ concentration [15, 57]. Furthermore, a reduction of coarse porosity and an improvement in quality of the interfacial transition zone are generally noticed [61, 63].

Limestone (LS) provides CaO mainly in form of CaCO_3 . The replacement of a small amount of PC by limestone is beneficial as it promotes nucleation and increases the effective w/c ratio for hydration [64]. In addition, CaCO_3 can react with C_3A to form monocarboaluminate, which indirectly stabilises ettringite by increasing sulfate availability, leading to an increase of the total volume of hydrate phases [16, 64–66]. According to [67], 15 wt% LS addition with a similar size distribution to PC, and used as an addition instead of interground, increases porosity of the hydrated binder, while a smaller size distribution and intergrinding decreases porosity.

Figure 3a shows a Ca–Si–Al ternary diagram, highlighting the regions corresponding to the major SCM groups and Portland cement [68]. Figure 3b shows cement hydrate phases that commonly form from Portland cement–SCM blends in the H_2O –CaO– Al_2O_3 – SiO_2 system [47]. The precise extent of the C–

S–H and C–A–S–H domains is the subject of ongoing research, but these graphics do highlight the broad range of compositions of the main binding phases forming in SCM blended cementitious systems, as a function of the type of SCM used.

The significant difference in Al_2O_3 contained in SCMs influences the composition and structure of the C–A–S–H phases and secondary reaction products forming in these materials [44]. Therefore, the role of Al in defining the carbonation rates and mechanisms of C(–A)–S–H has received some attention in the recent literature. Irbe [69] found faster carbonation of C–A–S–H than a comparable C–S–H gel when testing synthetic gels of molar ratio $\text{Ca}/(\text{Al} + \text{Si}) = 0.96\text{--}0.97$, under 0.04%, 2% and 4% CO_2 conditions. The thermogravimetry data of [70] show a significant increase in CaCO_3 formation after 28 days of carbonation of synthetic gels of molar ratio $\text{Ca}/(\text{Al} + \text{Si}) \sim 1$ when moving from zero Al content to $\text{Al}/\text{Si} = 0.02$, but no notable trend when increasing Al content further up to $\text{Al}/\text{Si} = 0.14$. In this study and other publications [29, 71] the formation of an additional Al-enriched silicate gel as a carbonation product is described when C–A–S–H gels are decalcified. This phase (and/or the formation of additional potential Al-containing reaction products) deserves further attention in characterisation, as its formation may alter the energetics of the carbonation process sufficiently to induce changes in its rate or mechanism.

According to several studies [42, 72–74], PC carbonation under moderate environmental conditions is governed by the reaction of portlandite to mainly form calcite, yielding a denser microstructure due to the positive difference of molar volume of calcite compared to CH ($+4 \text{ cm}^3/\text{mol}$ as mentioned in Sect. 1), which more than compensates the shrinkage induced by C–S–H decomposition and subsequent microcracking e.g. [74, 75].

In the case of BFS-blended cements, with increasing C–A–S–H carbonation the percentage of the CaCO_3 that is present as calcite is found to be reduced, while the metastable aragonite and vaterite tend to increase [21, 75–77]. The microstructural changes identified in these materials lead to higher permeability [75] and diffusivity [78] after carbonation, compared to PC with the same water to binder (w/b) ratio. The reduced calcium and alkali contents lead to a lower buffering capacity in BFS blended cements, and polymerisation shrinkage may lead to increased

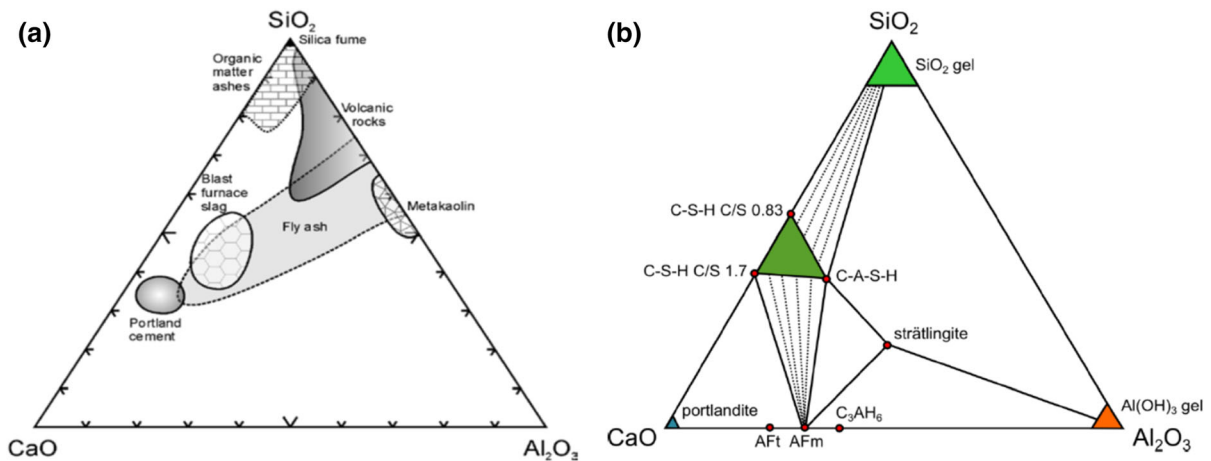


Fig. 3 Pseudo ternary diagrams, presented on a wt% basis, of **a** the major SCM groups and Portland cement [68]; and **b** hydrate phases from Portland cement—SCM blends [47]

porosity. Experimental results from [79, 80] indicate that at a replacement level $\geq 25\%$, the carbonation resistance is decreased compared to plain PC. Several researchers have determined that, under moderately accelerated carbonation conditions (3–5 vol% CO₂), not all portlandite and C–A–S–H were consumed during carbonation of BFS-blended cements [21, 26]. However, especially at high BFS replacement levels, the degree of portlandite and C–A–S–H carbonation is higher compared to plain Portland cement systems [21, 74]. This may compensate for the lowered buffering capacity to some extent, because if the degree of portlandite and C–A–S–H carbonation is increased, the actual available Ca is increased. However, if the maximum possible degree of portlandite carbonation is reduced, for example because portlandite is covered by calcium carbonate crystals and therefore the release of Ca from portlandite into the pore solution is hindered, the available Ca to buffer carbonation is reduced.

Compared to BFS, low calcium fly ash (FA) provides less initial CaO to blended systems. At the same FA replacement level (30 wt%), portlandite reduction compared to PC is higher for FA than for BFS [15, 64, 65, 76, 81]. A higher degree of C–A–S–H carbonation (full polymerisation) was identified at > 20 wt% FA replacement levels [73]. A less pronounced decrease in mercury and water intruded porosity upon carbonation has been found in FA blended systems compared to plain PC and BFS-containing concretes [24, 27, 77, 82, 83] and an increase in pore size threshold upon carbonation [82].

The slow pozzolanic reaction of FA compared with slag hydration, and the higher degree of C–A–S–H carbonation accompanied by a release of physical water [73] may be a reason for the deviation from Fick's first law that has been observed in these systems [42, 84, 85]. There is an increase in the partly carbonated zone with increasing FA replacement, determined through depth dependent pH measurements by the ex situ leaching method [86], indicating divergence from the assumption of pure diffusion-controlled kinetics required for Fickian diffusion (and formation of a sharp carbonation front). In several studies [87–90], a significant increase in carbonation progress compared to PC was found with increasing FA replacement levels between 30 and 50 wt% for the same *w/b* ratio. The difference was more pronounced for longer water curing durations (> 7 days) and high relative humidity during carbonation exposure. Thomas and Matthews [91] found that concretes with the same strength grade containing 15–30 wt% FA in the cementitious fraction carbonated to only a slightly greater extent than plain PC. However, concretes containing 50 wt% FA carbonated at a significantly higher rate than PC concrete.

From a thermodynamic point of view, less CO₂ can be bound if less calcium is available in the liquid and solid phases (except CaO already bound in CaCO₃ or CaSO₄) and if less Na⁺ or K⁺ are available in the pore solution. When using highly siliceous SCMs such as SF, where Al₂O₃ and CaO are solely provided by the Portland clinker, the carbonation reaction process is comparable to that identified in plain Portland cement

systems, as the main reaction product forming is C–S–H. For synthetic C–S–H it has been reported [33, 92] that with an increasing molar ratio of C–S–H versus portlandite, i.e. with increasing C–S–H carbonation, decalcification shrinkage may be dominant, leading to a coarsening of the pore structure. The carbonation (decalcification) shrinkage seems to increase with the degree of C–S–H polymerisation, and with a decrease in Ca/Si molar ratio. Carbonation shrinkage may reverse the beneficial, experimentally determined, porosity reduction that is related to portlandite carbonation to CaCO_3 [27].

The C–S–H amount in SF blended paste is high and the amounts of ettringite and AFm are reduced compared to PC or blends containing FA or BFS. However, the higher extents of self-desiccation and autogenous shrinkage leading to high internal stresses and micro-cracking, a pronounced reduction of pH, challenges of early-age workability, and high increase in strength provided by small amounts of SF addition usually lead to its application at low replacement levels. The number of published research papers on carbonation of SF-blended binary [78, 93, 96] and ternary [74] cement pastes is limited compared to BFS or FA blends. According to Leemann et al. [96], the reduction in total porosity of SF blended cement paste is less pronounced and coarse porosity is increased compared to PC upon carbonation. Consequently, higher oxygen diffusion coefficients are expected for carbonated SF blended cementitious materials than for PC and BFS blended cements for similar replacement levels. A decreasing carbonation resistance compared to PC was found for constant w/b [96] and for constant strength grade [93].

MK provides less CaO than FA but makes available more Al_2O_3 into the cementitious system than other SCMs. Carbonation when using MK or other calcined clays as SCMs has been investigated in an increasing number of studies [16, 25, 83, 93, 94]. At moderate replacement levels, a negligible amount of portlandite was found prior to carbonation due to pozzolanic reaction, and the C–A–S–H carbonation degree was higher than for PC (polymerised C–A–S–H for MK, decalcified C–S–H for PC) [16]. Consequently, the accessible porosity was on a similar level [16, 83] and the threshold pore radius was increased compared to PC upon carbonation [16]. Higher carbonation rates were found for MK blended cementitious materials either for a constant strength grade [93] or for constant

w/b [16] upon carbonation compared to PC, but lower than for SF blends [93] or for LS blends [16] at the same replacement level.

Initial portlandite contents in LS blended cement pastes are slightly lower than in PC pastes [16, 64, 66]. The LS-containing pastes were found to carbonate to a higher degree [16, 95]. Both the initial porosity and the porosity upon carbonation were increased compared to PC. A similar reduction in accessible porosity compared to plain PC was found after carbonation [16, 96], leading to a reduced diffusivity.

Figure 4 shows some effects of clinker replacement levels on the change in carbonation coefficient relative to PC mixes as reported by different authors—all samples have been cured for 28 days. According to these analyses, at the same replacement level the reduction in carbonation resistance is more pronounced for FA and SF blended concretes and mortars, than for LS or BFS blended concretes and mortars. It should be stated that differences in w/b , aggregate type and grading, execution and carbonation conditions can affect these results.

In order to assess the carbonation resistance of a specific cementitious material from its composition three main approaches have been developed:

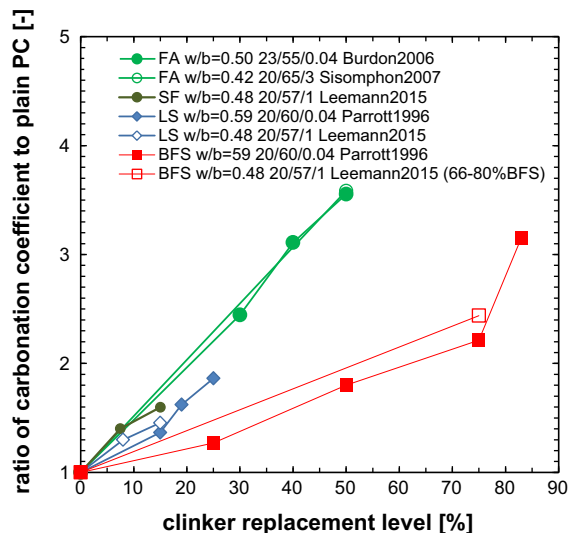


Fig. 4 Effect of clinker replacement on carbonation coefficients for 28-day water cured concrete and mortar samples. The notation 20/65/0.04 indicates T [°C]/RH [%]/CO₂ [vol. %]. Data from [79, 87, 96]

- (a) estimating carbonation resistance based on the clinker content and water to binder ratio (w/b) [41, 97].
- (b) k-value concept (EN 206), using the type of SCM and water/(cement + k-addition) (w/c_{eq}) [99].

- (c) assessing buffering capacity based on the ratio of mixing water to reactive calcium oxide ($w/CaO_{reactive}$), see Sect. 1 [44, 96, 100].

Figure 5 a, b, c illustrate the approaches (a), (b) and (c), respectively.

The approach (a), which uses the clinker content and w/b [41, 97], shows carbonation rates of concretes

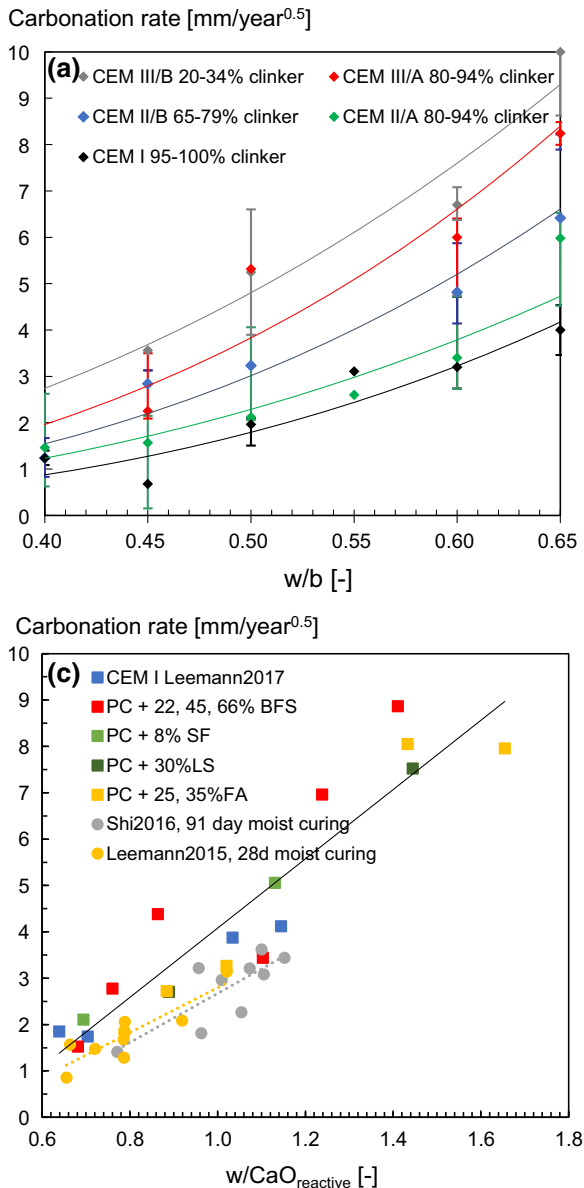
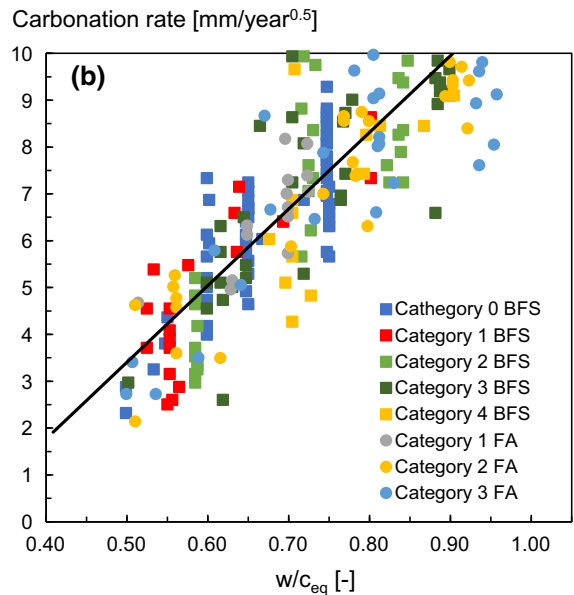


Fig. 5 approach **a** carbonation resistance in dependency of w/b and clinker content for 7-day water cured concretes (20 °C/ 65% RH/ 0.04 vol%CO₂) [41, 97]. Error bars indicate \pm standard deviation; b) approach **b** carbonation resistance in



dependency of w/c_{eq} of concretes [99] c) approach **c** carbonation resistance in dependency of $w/CaO_{reactive}$ of samples tested according to SIA262-1 [44] and samples cured for 91-day [100] and 28-day [96] carbonated at 1% CO₂ and related to 0.04% CO₂

water cured for 7-day and carbonated at 65% RH, 20 °C under natural CO₂ concentration. The lines show the potential regression curves to the mean carbonation rates of groups of concretes summarized in dependency of the ranges of clinker content according to EN197-1, including CEM I (95-100% clinker), CEM II/A (80-94% clinker), CEM II/B (65-79% clinker), CEM III/A (35-64% clinker) and CEM III/B (20-34% clinker). In addition the effect of maximum grain size (4 - 32 mm), admixtures (retarder, water reducers, air-entrainment agent), binder content, cement strength grade and clinker replacement level by specific types of SCM has been evaluated for mixes with the same *w/b* ratio. No systematic effect has been found for the maximum grain size, binder content and the admixture except for the air-entrainment admixture. With air-entrainment admixture the carbonation rate increased at fresh concrete air content > 8%. A small decrease in carbonation rate has been found with increasing cement strength grade in this curing protocol. The increase in carbonation rate with increasing replacement level was higher for LS than for BFS.

The *k*-value concept, approach (b) according to [99], shows carbonation rates of concretes water cured for 7-day and carbonated at 65% RH, 20 °C under natural CO₂ concentration. Based on the equivalent performance concept for type II additions in CEN/TR 16639 the efficiency factor *k_c* has been determined for the concrete property carbonation rate. The efficiency factor is used to reduce the creditable amount of mineral addition when calculating the *w/c_{eq}* with *c_{eq}* = clinker + *k_c* · addition. Using the *w/c_{eq}* the same performance shall be reached as if pure Portland cement would have been used with the same *w/c* = *w/c_{eq}* ratio. Hence, plain PC concrete has the efficiency factor *k_c* = 1.0, which is named category 0. For BFS and FA blended cements 3 and 2 categories have been built, respectively. Increasing category represents increasing amount of type II addition. For example, CEM III/B concretes are allocated to category 3 BFS. Efficiency factors were in the range of 0.8-0.6 for BFS blended cement concretes and 0.3-0.35 for FA blended cement concretes. For BFS blends the efficiency factors were in the range of those determined in [101] with 0.65-0.81 and higher than determined in [98] with 0.2-0.4. For FA blends the efficiency factor was similar with those determined in [101] with 0.25-0.58 and [98] with 0.05-0.3.

Approach (c) [44, 96, 100] replaces the clinker content in approach (a) by the amount of all CaO available to react with CO₂ -, i.e. *w/CaO_{reactive}* (*w/CaO_{reactive}*). In order to determine the CaO_{reactive} Papadakis et al. [38] suggested a simplified mass balance equation to calculate CaO: [Ca(OH)₂] + 3[C-S-H] + 3[C₃S] + 2[C₂S], this expression however, neglects CaO present in aluminate or ferrite phases. For modern cements, which can contain significant amounts of calcium carbonate as an SCM or minor additional constituent, the fraction of CaO already bound by CaCO₃ has also to be considered as well as the amount of SO₃, as SO₃ will be present as CaSO₄ in completely carbonated cements [14, 21]. Also, the amount of CaO present in unreacted cement clinker and supplementary cementitious material must be accounted for [14, 21, 44]. Thus, the CaO available for carbonation can be calculated according to: $\text{CaO}_{\text{reactive}} = \text{CaO}_{\text{total}} - \text{CaO}_{\text{CaCO}_3\text{init}} - \text{CaO}_{\text{CaSO}_4} - \text{CaO}_{\text{unreactedclinker}} - \text{CaO}_{\text{unreactedSCM}}$ where each term can be determined using thermodynamic modelling (see Fig. 1) or mass balance calculations.

The simplified approaches (a-c) used to describe the carbonation resistance in dependency of parameters of the mix design have their benefits and drawbacks. Approach (a), clinker content and *w/b*, is simple to apply, but it neglects the buffering capacity of the specific type of SCM and their differences regarding alteration in pore size distribution upon carbonation. The *K*-value concept, approach (b) is less simple to apply because it requires the allocation of the specific concretes to efficiency factor required for each type of SCM. Approach (c), is the most scientific approach. It also accounts for the contribution of SCM on CO₂ binding capacity. But for its application, the reactive CaO content has to be known or assessed and the effect of specific types of SCM on pore size distribution are little accounted for. Approach (a) and (b) are restrictive regarding the implementation of new materials, while in approach (c) new materials can be simply included. All three approaches are highly dependent on degree of hydration. In all three approaches, the mixing water *w* accounts for the diffusivity i.e. the volume of capillary pores. Alteration of porosity prior and upon carbonation due to the use of alternative materials and SCM's is little accounted for.

In addition to those three approaches, which describe the carbonation resistance based on the mix design, other approaches have been developed, which



describe carbonation resistance based on compressive strength [101, 102] or permeability [103]. For a 7 day compressive strength between 20 and 25 MPa the carbonation rate was found to be in the range between 4 to 7 mm/year^{0.5} in [102] for concrete samples water cured for 7 day and carbonated at 65% RH, 20 °C and natural CO₂. The concretes were prepared with CEM I, CEM III/A, CEM II/B-M and CEM IV as well as CEM II/C-M cements and the carbonation rate was the highest for concretes with high clinker replacement levels within the same strength grade. Similar were the results from [101] for samples carbonated in 2% CO₂ converted to 0.04 vol% with $k(0.04\% \text{ CO}_2) = k(2\% \text{ CO}_2) \cdot \sqrt{(0.04/2)}$. Imamoto et al. [103] used the correlation between air permeability and carbonation rate determined from existing structures, and thus under variable environmental conditions (moisture, temperature, CO₂ concentration) in Japan, Switzerland and Portugal to rate the quality of the placed concrete. For example, for a coefficient of air permeability between 0.1 and 1 10⁻¹⁶ m² the concrete was classified moderate and the carbonation rate was found in the broad range between > 0 and 5 mm/year^{0.5}. Compressive strength as well as the air permeability are indicators for the air tightness of a concrete and hence also its resistance against CO₂ diffusion; however compressive strength does not account for the CO₂ binding capacity of the specific type of binder and the differences in alteration of pore size distribution upon carbonation. This may explain to some extent the high scatter observed for this correlation. The benefit of both approaches is that the compressive strength is usually available and the air permeability [103] may be determined non-destructively.

To summarize, the carbonation resistance is depending on more factors than just the clinker replacement level, FA or BFS, the calcium oxide content, compressive strength or air permeability. In addition, the binder specific alteration of porosity, the reaction products formed, the composition dependent reaction kinetics, the degree of hydration, the water retention and hence the testing conditions are important parameters, which leads to a limited precision in all the correlations discussed above.

3.2 Aggregate volume and grading: paste-mortar-concrete

The carbonation coefficients reported in [38, 39] for plain Portland cement concrete samples carbonated at 50 vol% CO₂, 30 °C and 65% RH increased by a factor of 1.1 and 1.5 when the aggregate to cement ratio (a/c) increased by a factor of 1.7 and 2.3, respectively. Similar results have been reported at 5 vol% CO₂ [104]. If a coarser aggregate was used (unchanged total volume of aggregate), the measured carbonation depth was similar or slightly higher [38, 39]. In contrast, Jung et al. [105] found no significant differences in the effective CO₂ diffusion coefficients between concrete and mortar, but a significant increase in diffusivity was observed for cement paste systems upon carbonation (i.e. if the a/c ratio decreases). The increase of gas diffusion coefficient for paste systems was explained by the larger porosity per unit of volume hydrated paste compared to hydrated concrete. This is in line with investigations of plain Portland cement pastes and mortars from [27, 105, 106].

Carbonation rates of cement paste, mortar and concrete systems have been compared in [107]. Figure 6 plots the carbonation coefficients obtained after 7 weeks in 2 and 10 vol% CO₂ for cement paste, mortar and concrete, manufactured with either 30 wt% PC replacement by FA (70PC30FA), or 70 wt% PC

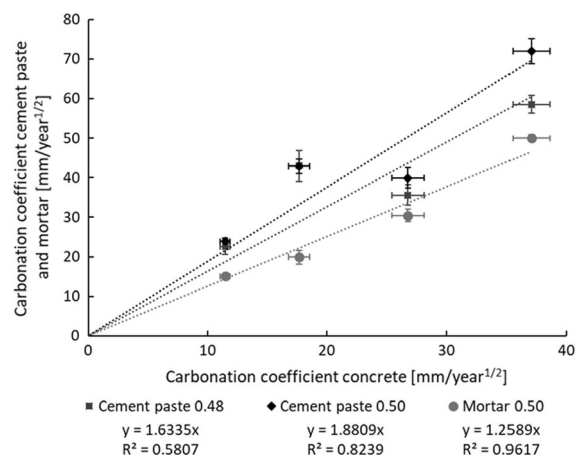


Fig. 6 Carbonation coefficient of cement pastes with w/b ratios of 0.5 and 0.48 (based on the concrete equivalent mortar principle [108]), and concrete equivalent mortar (w/b ratio of 0.5) versus carbonation coefficient of concrete (w/b ratio of 0.5), according to [107]

replacement by BFS (30PC70S). Carbonation coefficients of mortar and cement paste ($w/b = 0.5$) were higher by a factor of 1.2–1.3 and 1.6–2.3, respectively (depending on binder type and CO_2 concentration), compared to the carbonation coefficients of concrete. The increase in carbonation coefficient for cement paste compared to concrete is more pronounced for FA than for slag systems, and more pronounced at higher CO_2 concentration. A better correlation has been observed between mortar and concrete ($R^2 = 0.96$) than between cement paste and concrete ($R^2 = 0.82$ for w/b ratio of 0.50).

The increase in carbonation coefficient with increasing a/c for PC concretes reported in [38, 39, 104] may be attributed to the increasing fraction of more porous portlandite-rich interfacial transition zone (ITZ) providing paths for fast CO_2 diffusion [77]. In contrast, the faster carbonation in the presence of less aggregate reported in [107] could be related to more autogenous and drying shrinkage in case of cement paste system and subsequent increase of porosity [106–109].

The majority of studies evaluating carbonation resistance when using SCMs are conducted in paste and mortars, with the assumption that the observations for these systems can be directly translated into concrete. However, this is not the case for the data shown here due to the differences in CO_2 diffusivity, consistent with variations in pore structure based on the different paste contents and ITZ zones; differences in the degree of water saturation in materials with diverse permeability; and the different type and amount of carbonation products expected to be forming at a given time. The porosity of carbonated and partly carbonated regions as well as the amount of cement phases buffering the reactions involving CO_2 , will modify the carbonation reaction kinetics. This has important implications for the development of modelling tools for prediction of the long-term performance of concretes with SCMs, and for the determination of the real carbonation resistance of these materials.

3.3 Effect of recycled and lightweight aggregate

Independent of the SCM used, concretes produced with recycled and lightweight aggregate show to some extent different carbonation performance from those produced with conventional dense aggregates.

Recycled aggregate (RA) may contain mortar, unbound aggregate, ceramics, floating particles and bituminous matter. Its different physical (e.g. water absorption, porosity) and mechanical properties (e.g. Los Angeles coefficient) compared with natural aggregate may impact concrete performance. In recent reviews on the durability of concretes with recycled aggregates, Guo et al. [110] and Silva et al. [111] reported that concrete carbonation resistance is affected adversely by the aggregate replacement ratio, w/c ratio, adhered mortar, aggregate size, and exposure time, particularly in concretes with SCMs. Carbonation resistance improves with addition of superplasticisers, consistent with a reduced water content in the concrete, and can also be improved by RA pre-treatment.

Even in the absence of major RA contaminants, due to the heterogeneity and wide variability in the properties of recycled concrete aggregate (RCA), which depend on its source and service history, it is impossible to draw general conclusions about its potential effect on carbonation performance of concretes with SCMs. However, numerous authors [112–124] studying the effect of the RCA replacement ratio on carbonation resistance of concretes with and without SCMs found that in the case of coarse aggregate replacement the carbonation depth, relative to normal concrete, increased 1.06 to 2.00-fold. However, some studies report higher carbonation resistance in RCA concrete [119, 125, 126], which can be explained by two mutually opposing effects, as the adverse effect of larger porosity counteracts the benefits of greater amounts of (alkaline) carbonatable matter (uncarbonated mortar). Using recycled aggregate as fine rather than as coarse aggregates seems to increase the carbonation depth, so that concrete with RCA showed carbonation depths up to 3.75 to 12.25 times greater than for concrete with natural aggregate [127–130].

The use of porous and gas-permeable lightweight aggregate (LWA) requires a concrete cover at least 5 mm thicker than the maximum particle size [131]. LWA nonetheless lowers concrete gas permeability, as it absorbs the water in fresh concrete which can form an adhesive water layer on a ‘dense’ aggregate surface. The water adsorption may reduce the water/binder ratio around the LWA in the aggregate-matrix interface, and thus eliminates the interfacial transition zone (ITZ) typically identified when using natural

aggregates (Fig. 7). As cement hydration reactions proceed, the absorbed water migrates from the LWA to the hydrating cement paste, favouring internal curing. The outcome is a larger high-quality paste-aggregate transition zone (larger grey zone in Fig. 7 bottom left), less permeable in lightweight than in normal concrete [132, 133]. Research on existing structures confirms the beneficial impact of LWA on the carbonation coefficient [134–136].

4 Effect of curing on carbonation resistance

Curing has an important effect on the carbonation resistance of concrete as it influences the pore structure and the degree of hydration of the cement, and consequently the amount of carbonatable material. The effect is less pronounced for plain PC concrete

than for concrete with SCMs due to their slower reaction. Nevertheless, if adequate precautions are taken, e.g. sufficiently long curing and reduced w/c ratio, the depth of carbonation of concrete with binders containing SCMs may be the same as for concrete with PC [138]. Thus, the type of curing, its duration and temperature as well as other environmental and geometrical conditions like wind speed, size of structural element, and type of formwork need to be considered when estimating the impact on the carbonation resistance.

Typical curing methods in practice are in air, moist, sealed, heat or steam curing, or the use of a chemical curing compound. The type of curing drastically affects the carbonation rate as shown by [139], who reported that the carbonation rate of water-cured samples was only 17% of the carbonation rate of air-cured samples (28 days), in a chamber filled

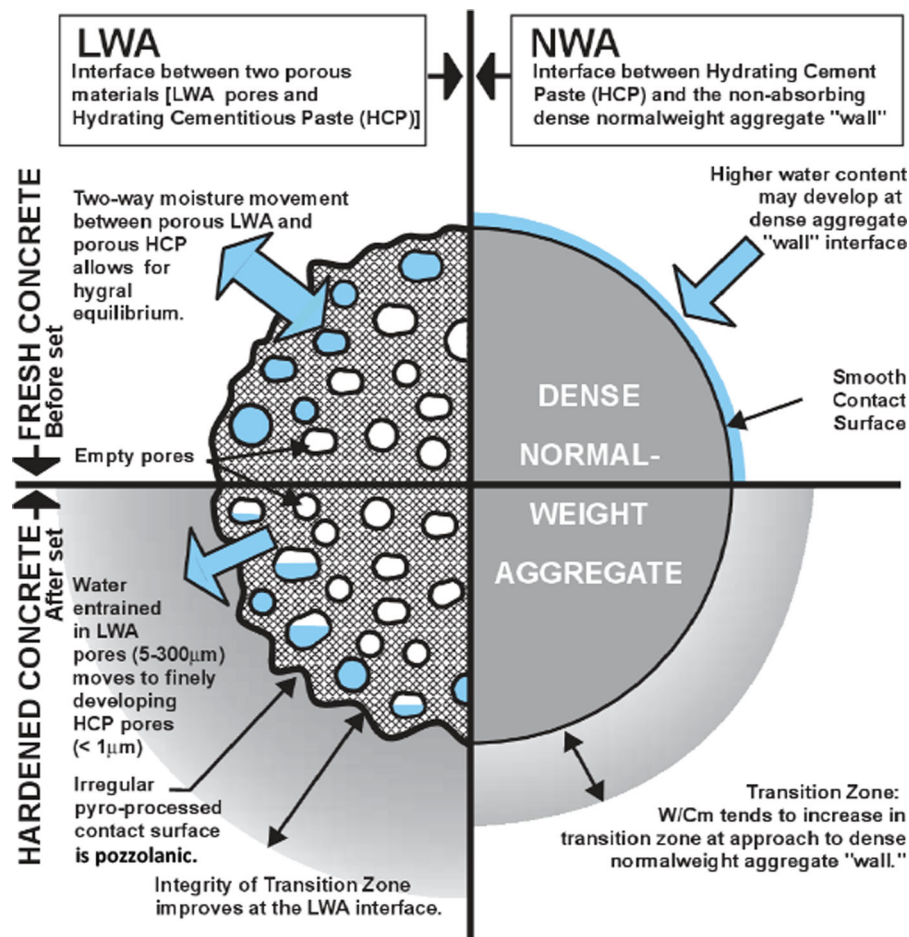


Fig. 7 Interface between lightweight aggregate (expanded clay) and matrix. Reproduced from [133, 137]

continuously with 100% CO₂ (carbonation measurements between 1 and 28 days).

In the laboratory, curing at > 95% RH is common practice but is not representative for on-site hydration circumstances. The duration of curing on construction sites is typically a few days. For varying replacement levels by FA and BFS, researchers have reported that the carbonation coefficient increases dramatically when shortening the curing periods from 7 to 1 day [140–142]. In [143], it is shown for concretes (grades C16/20 to C30/37) with blended cements (CEM II A-M and CEM IV A-M) based on natural carbonation tests for 1 year, how the period of wet curing, and the type of curing (wet curing vs. use of a membrane), affect the carbonation rate and therefore the service life of reinforced concrete structures. In that study, an extension of the wet curing period from 1 to 3 days increased the predicted service life by a factor of more than 2, and a factor of 4 improvement is gained by increasing from 1 to 7 days of wet curing. It was found that 3 days of curing should be enough for replacement levels of less than 30 wt% for FA or 50 wt% for BFS [141, 142]. For higher replacement levels, longer curing periods are desirable.

For accelerated carbonation testing in the laboratory, longer curing periods are in most cases recommended to obtain a more realistic and representative microstructure before subjecting the concrete to high CO₂ levels. Continuous curing over periods longer than 1 month can significantly increase the durability of BFS concrete (50–85 wt% cement replacement), but periods longer than 3 months were found not to considerably affect the resistance to carbonation anymore [52]. In contrast, Sallio [144] showed that the carbonation depth of systems containing slag cement, or 30 wt% FA, seems to decrease progressively and continuously also with curing times exceeding 3 months. However, no significant effect of wet curing beyond 3 months was observed for Portland cement systems containing 10 wt% or 25 wt% MK [143–145]. Atis [146] reported for concrete with FA (50 wt% and 70 wt% cement replacement) the importance of a longer initial curing before testing at 5 vol% CO₂ (testing from 3 days up to 3 months of moist curing), which resulted in lower carbonation depths. Burdon [87] found that the carbonation rate significantly increases with increasing FA replacement between 30 and 50 wt% for the same *w/b* ratio, but that the relative difference to PC

concrete decreases with moist curing time. Parrott [79] examined the effect of 15–25 wt% LS replacement (at the same *w/b* = 0.59) on carbonation rate on samples water cured for 1, 3 and 28 days prior to natural carbonation exposure. Compared to plain cement, the carbonation rate increased with increasing LS replacement; the difference was smallest for 1-day curing for both exposure times under temporal variable outdoor conditions, see Fig. 8. With increasing exposure time and therefore decreasing moisture and temperature variations at the carbonation front, the differences decrease compared to plain PC after 1.5 years of exposure.

Also, the temperature during curing has an impact on the carbonation resistance. Borges et al. [75] concluded that, for a curing period of 90 days, raising temperature from 20 °C to 60 °C reduced the carbonation rate by 10–30% for cement pastes with high replacement levels by BFS. Li et al. [148] investigated the effect of high temperature curing (water curing at 20 °C, 40 °C, 60 °C, 80 °C until equal strength grade) of concrete made of PC and with FA, FA and BFS, and SF. The minimal carbonation depth was found for samples cured at 60 °C, pronounced for blended cements and less pronounced for PC.

In different models e.g. fib MC 2006 bulletin 34 [149] an execution transfer parameter is introduced to take into account the influence of curing on the effective carbonation resistance. It should be noted that all actions preventing premature desiccation of the concrete close to the surface are here considered as curing measures, and that no distinction is made for the type of curing and type of binder. However, Van den Heede et al. [85] emphasise the importance of a binder-dependent curing parameter. The effect of curing on carbonation rate as obtained from [42, 79, 91, 147, 150–152] has been evaluated in Fig. 9. It can be seen that for slag and LS blended cements, increasing curing time from 7 to 28 days is less effective with regard to improving carbonation resistance, despite the expected further reaction processes involving LS and slag with time [66]. In contrast, the FA blended samples showed a pronounced reduction of carbonation rate when increasing curing from 7 to 28 days, especially for the samples exposed outside under sheltered conditions with variable RH and temperature (exposed samples). It should be mentioned that moisture conditions in sheltered small samples differ from large structural



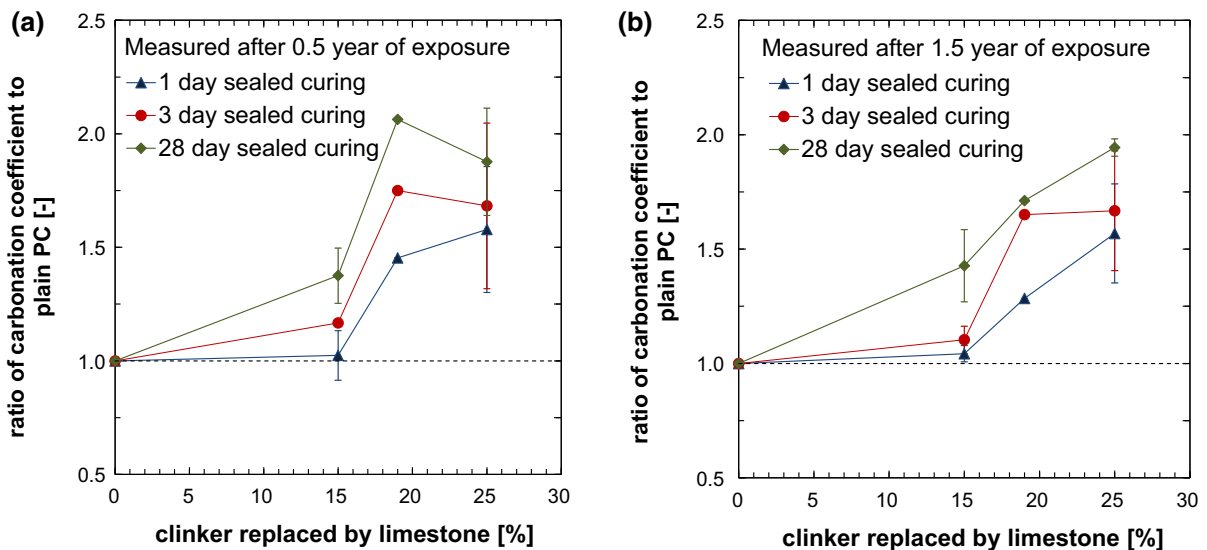


Fig. 8 Effect of sealed curing duration on carbonation rate for different limestone replacement levels, compared to PC [79] concretes for the same w/b ratio

elements; i.e., more homogeneous micro- and macro-climates in small samples than in structural elements may lead to different moisture transport processes.

5 Effect of relative humidity, temperature and CO₂ concentration on carbonation

5.1 Relative humidity and temperature

Carbonation of cementitious materials occurs when CO₂ diffuses through the material and dissolves in the pore solution where it reacts with the solid phases. At very low RH, there is not enough water in the pores to dissolve CO₂ for the chemical reaction to happen. At very high RH, the pores become saturated and consequently the diffusion of CO₂ is slowed down significantly. For Portland cement-based materials, the carbonation rate at 20 °C reaches maximum values at RH between 40% and 80% [38, 39, 153–155]. This RH range is quite large because the literature results relate to different CO₂ concentrations with various preconditioning conditions (temperature and relative humidity, duration) and different curing times, as well as different material compositions (paste vs. mortar, water-to-cement ratio). In recent studies, the fastest carbonation has been observed at approximately 50–55% RH for plain cementitious materials; the

carbonation coefficient of plain cementitious material is reduced by a factor of 0.6 ± 0.4 , 0.5 ± 0.4 and 0.4 ± 0.4 if the relative humidity increases to 70%, 80% and 90% respectively [43, 44, 72]. The carbonation coefficient has been observed to be reduced to zero in the range 10 to 30% RH [72]. These broad ranges and various conditions involve varying degrees of saturation of the test specimens. For example, in the accelerated carbonation tests for both French standard XP P 18-458 [156] and European standard EN 12390-12 [157], the RH during carbonation is fixed at $57 \pm 3\%$, while conditions specified for sample preconditioning are different.

For materials containing SCMs, the RH range at which carbonation proceeds the fastest may differ from the values determined for Portland cement systems (Fig. 10). Drouet et al. [72] found the most rapid carbonation RH around 33% for CEM V/A paste (containing slag and fly ash) carbonated at a CO₂ concentration of 50% at 20 °C, which is a much lower RH value than was obtained for plain Portland cement paste (CEM I) in the same study, which was around 50%. Leemann and Moro [44] studied mixtures with different SCMs: BFS, SF, FA and LS. They found that increasing RH from 57 to 70% or 80%, at a CO₂ concentration of 4% not only decreases the carbonation coefficient but also changes the ranking of the different concrete mixtures. The authors explained

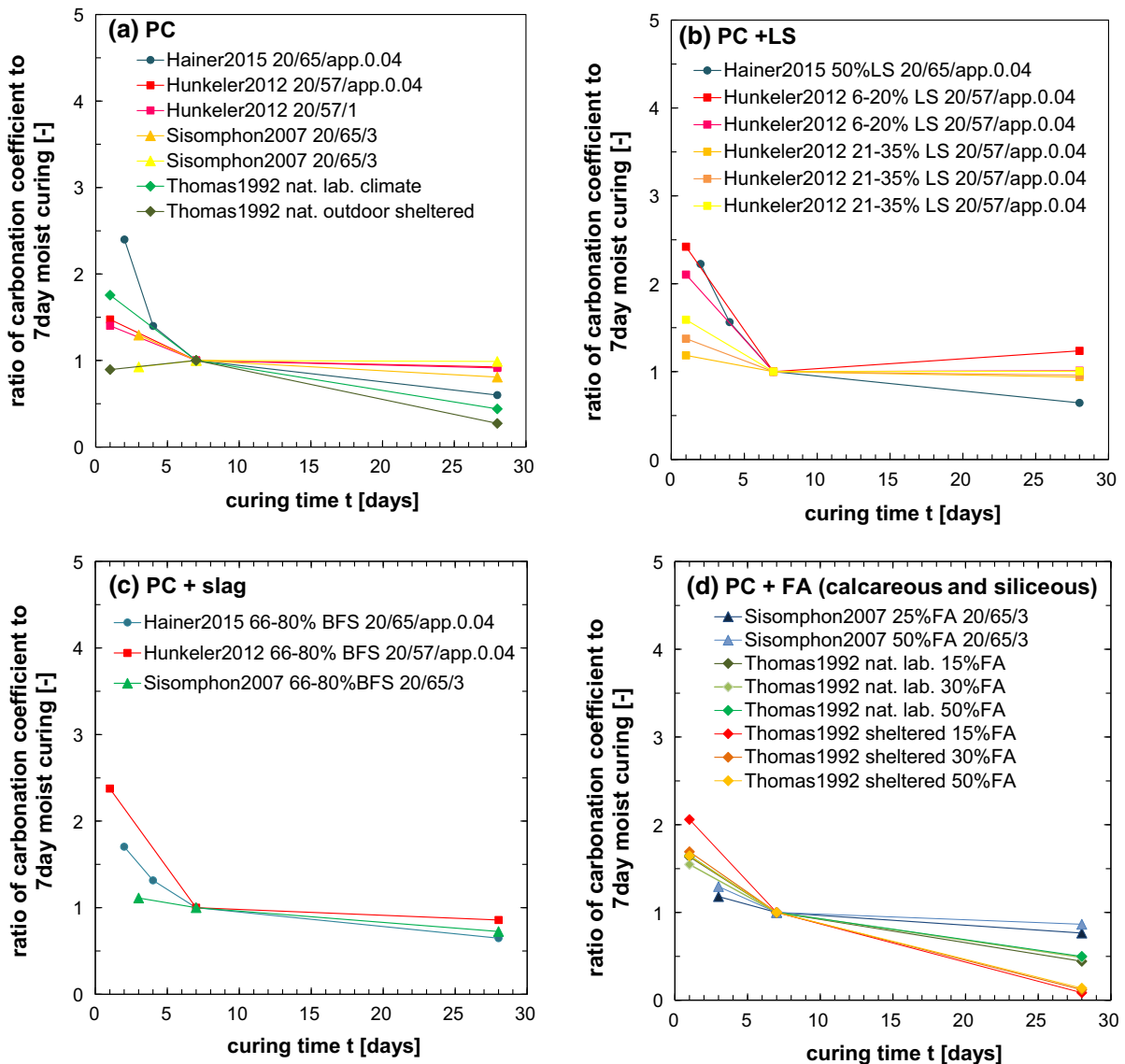


Fig. 9 Increase in carbonation resistance in dependency of moist curing time relative to 7 days curing for **a** PC, **b** PC with LS addition **c** PC with BFS addition **d** PC with FA addition. Data

these differences via the effect of pore size effect on capillary condensation. For cementitious materials with a higher amount of fine pores, such as those containing blast furnace slag and pozzolans, the pore volume filled with water due to condensation is higher at a fixed value of RH [72, 158, 159]. De Ceukelaire et al. [160] found a maximum carbonation progress at 50% RH for concretes containing BFS, at different CO₂ concentrations. A decrease of carbonation coefficient with increasing RH (40% to 60% to 80%) for

from [42, 79, 91, 147, 150–152]; i.e. 20/65/3 indicates T [°C]/ RH [%]/ CO₂ [vol. %] where the climate conditions are given in the original literature source

different binders containing SCMs was also reported in [25].

It should be noted that apart from the externally imposed humidity conditions, the applied CO₂ concentration during carbonation testing could also affect the internal humidity and saturation degree of cementitious binders. According to [161], excessive water production during carbonation at high CO₂ levels could have a pore blocking effect. Hence, the humidity range at which carbonation is most rapid is most

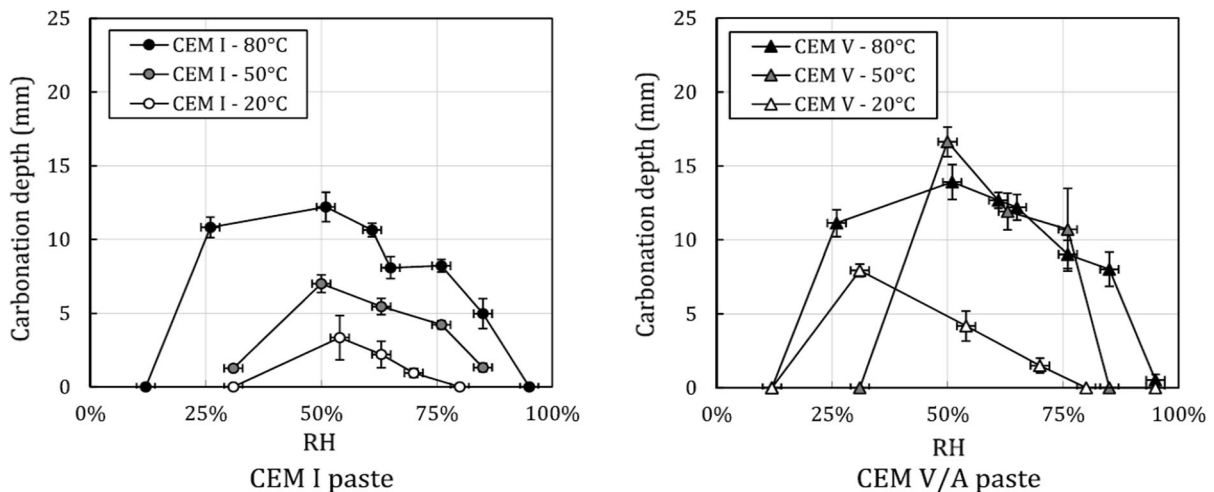


Fig. 10 7-day carbonation depth as a function of RH, for CEM I and CEM V/A pastes with $w/b = 0.40$, at a CO_2 concentration of 50% [72]

probably dependent on CO_2 concentration for any concentrations above the natural atmospheric levels.

In addition to RH, temperature is a main external parameter that affects carbonation of cementitious materials. Higher temperature accelerates carbonation as chemical reactions and diffusion are faster. However, higher temperature also decreases the solubility of portlandite and CO_2 in water [2, 162, 163].

The carbonation coefficient increases by a factor of approximately 1.1 from 20 to 30 °C and from 30 to 40 °C for plain and for blended cements (e.g. limestone and low calcium FA). For calcined clay blended cements, a higher increase of the carbonation coefficient was determined (by approximately a factor of 1.3) [25]. The decrease in carbonation coefficient when the temperature decreases from 20 to 10 °C is less pronounced (multiplicative factor of 0.95) [25, 38, 164].

Temperature also affects the stability of the calcium carbonate polymorphs that precipitate during carbonation. Tai and Chen [165] have shown that the formation of these polymorphs by precipitation from a $\text{CaCl}_2/\text{Na}_2\text{CO}_3$ solution is a function of pH and temperature (Fig. 11). At high pH, calcite is the main polymorph regardless of temperature (24 °C and 58 °C). At lower pH, the dominant polymorph changes as a function of temperature; for high temperature (58 °C), aragonite will be the main polymorph to precipitate while for ambient temperature (24 °C) vaterite has been observed. Drouet et al.

[72] have studied the effect of both temperature and RH on the stability of calcium carbonate polymorphs. They found that the two metastable forms of calcium carbonate (aragonite and vaterite) were observed in varying amounts for both Portland cement and CEM V pastes. The amount of aragonite and vaterite increased when the RH decreased. This increase is more significant at higher temperature.

One key aspect is that if the temperature increases without maintaining a fixed RH, a part of the water from the specimen evaporates and the carbonation could be lower in spite of the increased temperature. The literature results reflect these contradictory effects. Drouet et al. [72] observed that the carbonation depth of Portland cement paste increased continuously with temperature at a fixed RH, whereas the carbonation depth of CEM V/A reached a maximum at around 50 °C.

These findings are particularly important considering that when evaluating carbonation resistance of concretes according to accelerated carbonation standardised testing methodologies, the exposure temperature is generally set to be between 20 and 25 °C, which is not representative of all climates, and can yield carbonation results that can be far from being a realistic representation of what can be expected of concretes with SCMs under natural carbonation conditions in the field.

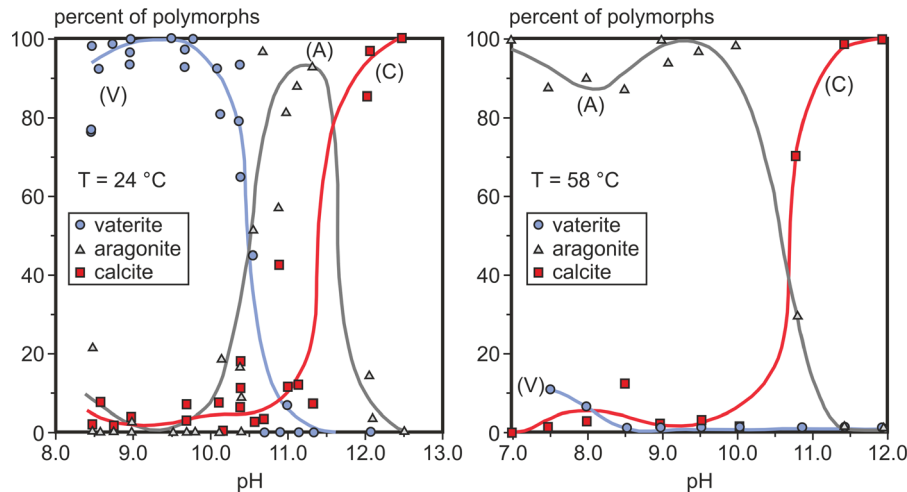


Fig. 11 Polymorphs of calcium carbonate observed to precipitate from a 1:1 molar mix of CaCl_2 and Na_2CO_3 at a supersaturation of 5.5, according to pH (controlled by NaOH or HCl addition) and temperature [165]

5.2 CO_2 concentration

Increasing the CO_2 concentration is a common approach to accelerate carbonation for testing purposes, and the results of accelerated tests are often used as performance criteria for validation of new concrete mixes and service life prediction models. Different factors and equations have been proposed to transform the results from accelerated carbonation testing to predict natural carbonation [151, 166, 167]. However, there is still need for research to define relations applicable for different concrete compositions [142].

From a thermodynamic viewpoint, increasing the CO_2 concentration should not change the expected phase formation in plain Portland cement [28, 168]. Nonetheless, experiments have shown that:

- The C–S–H carbonation rate increases with the applied CO_2 concentration [32]. The proportion of CaCO_3 originating from portlandite and C–S–H carbonation changes significantly from 1% CO_2 onwards, in favor of C–S–H carbonation [169].
- A CO_2 concentration above 3% favours formation of aragonite and vaterite [26, 170] due to pH reduction because of increased amounts of dissolved CO_2 , [171], (Fig. 11).
- A CO_2 concentration above 10% leads to incomplete reaction of portlandite, e.g. due to a fast surface reaction causing an overgrowth of portlandite with calcite, which permanently prevents

further portlandite carbonation [28, 170, 172]. A high CO_2 concentration also lowers the pH and thus the solubility of CO_2 in water or in solutions containing alkali hydroxides (such as cement pore fluids), leading to the formation of more HCO_3^- and less CO_3^{2-} [2, 171].

- However, in cementitious materials with limestone fillers only calcite is formed [168, 172, 173]. In high-volume fly ash binder systems, the preferred precipitation of aragonite and vaterite over calcite could not be confirmed for 1% and 10% CO_2 , but was evident at 0.03–0.04% CO_2 [169].
- For a high CO_2 level, the amount of water produced during carbonation could be more than the porous matrix is capable of expelling in the same time interval. The time needed to establish a condition of equilibrium again is believed to slow down further carbonation [161, 174].
- The correlation between accelerated and natural carbonation coefficients decreased from laboratory to sheltered ($R^2 = 0.69$) and finally to unsheltered exposure ($R^2 = 0.15$). Key parameters to consider for natural carbonation are temperature, relative humidity and amount of precipitation [44, 96]. The correlation strongly depends on the microclimatic conditions (i.e. RH, orientation, wind, precipitation).

Rozière et al. [175] found correlation coefficients of only 0.45–0.67 when correlating natural to accelerated carbonation at 50% CO_2 , although the ranking of the

concrete types considered remained similar. This is in line with other studies [38, 39, 176]. On the other hand, several researchers [175–177] noticed small changes in ranking between mixes when carbonated at 1%, 4% or 10% CO₂. Increasing the RH at 4% CO₂ from 57% to 70–80% RH also affected the ranking for carbonation resistance, probably as the result of a different w/c and pore size distributions of the concrete types tested [44].

As the pore structure and the ratio w/CaO_{reactive} are cement-specific, the correlation between accelerated and natural carbonation depends strongly on the binder [150, 179]. Hainer [150] points out that clinker-reduced concrete shows relatively higher carbonation rates under field than under accelerated conditions. In contrast, Leemann et al. [96] and Bernal et al. [171] noted that accelerated carbonation is more aggressive than natural carbonation for concrete with SCMs. A detailed comparison of literature data is challenging due to the many different storage and exposure conditions assessed by different authors, and is beyond the scope of this review.

The increase in carbonation coefficient with increasing CO₂ concentration (CO_{2acc}) compared to natural CO₂ concentration (CO_{2nat}) is in most experimental investigations lower than what is expected from the theoretical relationship $\sqrt{(\text{CO}_{2\text{acc}}/\text{CO}_{2\text{nat}})}$ [38, 96, 151]. According to these investigations, the deviation from the theoretical relationship is more pronounced for plain cements and cements with LS than for slag blended cementitious materials. It has been indicated [42] that a formula in which the carbonation depth relies on the square-root of the CO₂ concentration in play should be reliable up to 3% CO₂. Yet, even from 1% CO₂, the relationship does not seem to hold [169]. Given that this is the case, the assumption of pure diffusion control of carbonation kinetics appears to break down at higher CO₂ concentrations, and this needs more detailed investigation to determine what is the true rate-controlling step if accelerated test results are to be used to predict natural carbonation rates in standards and codes.

6 Effect of carbonation on porosity and transport properties

6.1 Porosity and pore size distribution

Porosity of cementitious mixtures plays an important role in relation to the carbonation resistance, as it is directly linked to the ingress of CO₂. When investigating porosity, different aspects need to be considered, for instance pore volume, pore size distribution, tortuosity and interconnectivity. Castellote et al. [31] reported pore clogging and formation of dense, carbonated areas as the main cause for limited accelerated carbonation rates in plain PC pastes. Hyvert et al. [32] and Anstice et al. [180] confirmed a decreasing total porosity with an increasing CO₂ - concentration, and Knöfel et al. [173] recorded a refinement in pore size distributions using mercury intrusion porosimetry. Mortars with plain PC showed increased amounts of gel pores, while the fraction of capillary pores decreased to around 10%. The decrease in total porosity, and pore clogging, are attributed to the formation of calcium carbonate which takes up a larger volume than the initial hydration product Ca(OH)₂. Several studies [24, 25, 181] also identified a decrease in the total porosity of plain cement pastes due to carbonation in combination with a coarsening of the capillary pores. For BFS-containing binders a decrease in gel porosity but an increase in capillary pores (coarsening of the pore structure) has been reported in [26, 83, 182]. Similar are the findings at high FA or SF replacement levels [26, 27, 182, 183]. This coarsening is usually associated with C–S–H/C–A–S–H carbonation. The higher the amount of reactive alumina provided by the SCM, the larger the increase in porosity on carbonation, due to the decomposition of AFm and AFt phases [75].

According to [106] the decrease in micro-pores is attributed to clogging by CaCO₃ from C–S–H carbonation, while the reduction of macro-pores is mainly attributed to pore clogging by CaCO₃ from portlandite carbonation. However, the increase in meso-pores has been interpreted differently by various authors, and the potential causes are listed in [106] as follows:

- (i) porous structure of silica gel formed during carbonation.

- (ii) micro-cracks in the CaCO_3 layer surrounding portlandite crystals due to the hydric gradient, and.
- (iii) micro-cracks induced by carbonation shrinkage.

The more pronounced increase in meso- and macro-pore volumes for FA, SF and slag blended cements upon carbonation can also be attributed to the lower Ca/Si ratio of C–S–H/C–A–S–H formed in these blended cements, by enabling the entrapment of alkalis reducing the amount of hydroxyl ions and also the increased carbonation shrinkage for Ca/Si less than 1.3 [34].

Also Shah et al. [25] reported that because the replacement of PC with Si-rich SCMs results in less portlandite, the decalcification of the C–S–H present leads to an increase of the total porosity in combination with a coarsening of the pore structure. Consequently, the extent of pore coarsening and the increase of total porosity during carbonation depend on both the amount and the type of SCMs.

Prior to carbonation, SCMs can increase the porosity of cementitious materials at early ages but contribute to the development of a more refined pore structure over the time [184]. These two opposing effects will affect the resistance to carbonation of concretes depending on the type of SCM used and its ability to cause pore refinement, the amount of cement replacement, and the reaction degree as a function of time. Upon carbonation it is observed that the total porosity increases with increasing SCM replacement

ratios [75, 82]. For example, when SF is used in concrete, Kulakowski et al. [185] found a ‘critical threshold’ related to the amount of replacement and w/b ratio: cement replacement up to 10 wt% by SF will result in an increased carbonation resistance. However, if SF replacement is higher than 10%, this will lead to more carbonation.

The data collected in Table 1, from [82], show an increasing total porosity prior to carbonation when the replacement level by FA is increased from 0 to 30 wt% and 60 wt% substitution. Upon carbonation, the total pore volume decreases in all cases. The decrease of the pore volume in the MIP-accessible range (3 nm to 500 μm) during carbonation seems to be lower at higher replacement levels for the MIP measurements, and similar in the case of GRAM (gamma ray attenuation method) measurements (accessing coarse pores size 200 μm to 1000 μm [186]).

For ternary systems with 50% clinker, 31% calcined clay, 15% limestone and 4% gypsum, a clear increase of the total porosity was observed in Fig. 12a [24], under both natural and accelerated (3%) carbonation conditions. An experimental study on the use of slag in pastes [24] showed that an increase in total porosity is detected when the clinker replacement is 70 wt%. The increase in capillary porosity due to carbonation further accelerates diffusion of detrimental substances and will therefore make concrete with SCMs more vulnerable to deterioration by coupled mechanisms.

Table 1 Total porosity of cement paste (CN stands for w/c ratio of 0.45 and CP for $w/c = 0.60$) as a function of the replacement level by fly ash before and after carbonation measured with mercury intrusion porosimetry (MIP; pore size ~ 3 nm to 500 μm) and gamma ray attenuation method

Characteristics		Units	CN	CN30	CN60	CP	CP30
Fly ash		vol. %	0	30	60	0	30
Fly ash		wt %	0	23	51	0	23
$w/(c + \text{fly ash})$		–	0.45	0.45	0.45	0.6	0.6
w/c		–	0.45	0.64	1.13	0.6	0.86
Non-carbo-nated	Porosity (MIP)	%	19.2 ± 0.7	29.2 ± 1.1	37.8 ± 1.0	31.0 ± 2.1	42.7
	Porosity (GRAM)	%	37.9 ± 0.7	47.4 ± 1.2	52.9 ± 1.7	47.1 ± 0.6	54.9 ± 1.0
Carbo-nated	Porosity (MIP)	%	12.3 ± 1.1	23.4 ± 2.7	36.4 ± 1.2	23.1 ± 3.1	34.2 ± 2.1
	Porosity (GRAM)	%	30.2 ± 1.1	36.0 ± 0.8	46.5 ± 0.9	36.5 ± 1.3	48.8 ± 0.8

(GRAM; pore size ~ 200 μm to 1000 μm [186]); samples were cured for “at least” 6–11 months (minimum 6 for PC, 11 for blends), then preconditioned for 56 days at 45 °C in an oven, plus 56 days at 20 °C, $62 \pm 5\%$ RH and carbonated at 3% CO_2 . Data from [82]

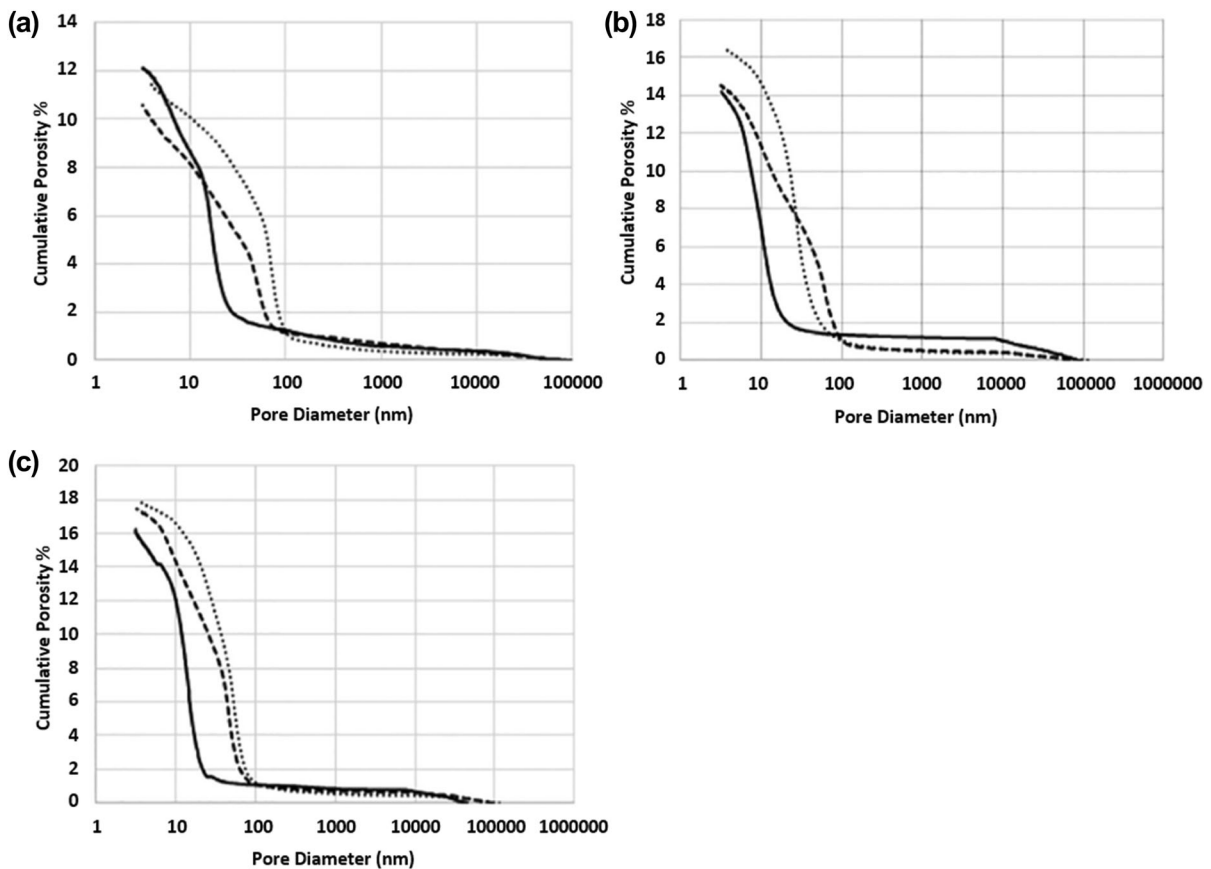


Fig. 12 Mercury intrusion curve of uncarbonated cylindrical paste samples (solid line) compared with cylindrical paste samples carbonated in natural (dotted line) and accelerated conditions at 3% CO_2 (dashed line) cured in lime water for 120 day and preconditioned for 15 day at 60% RH and 27 °C; a)

Cumulative intrusion curve of PC, b) Cumulative intrusion curve of 70% PC + 30% FA, c) Cumulative intrusion curve of limestone calcined clay cement (50% clinker, 31% calcined clay, 15% LS, 4% gypsum) from [24]

6.2 Transport properties

The alteration of the pore structure upon carbonation of plain and blended cementitious materials affects the vapour sorption/desorption isotherms, gas and moisture transport. The transport of CO_2 through cementitious materials is one of the governing parameters affecting carbonation rate and is strongly affected by moisture conditions as was discussed above. The degree of water saturation under steady-state and isothermal conditions has been determined by means of water vapour sorption/desorption tests [38, 74, 187]. Figure 13 shows sorption isotherms for plain and blended cement pastes. A benefit of adsorption/desorption isotherms is the provision of information about changes in micropores < 10 nm,

which are less well reflected by MIP (molecule radius of H_2O is 0.1 nm, of nitrogen N_2 is 0.215 nm and both are smaller than that of mercury; it avoids also the risk of microcracking in MIP [106]).

Papadakis et al. [38] and Houst et al. [187] observed no alteration in water saturation degree at > 50 vol% CO_2 for plain cementitious materials. Borges et al. [75] found a small alteration at low RH when applying 3 vol% CO_2 to plain PC, indicating an increase in micro-porosity, compared to a pronounced alteration of pore saturation in FA and BFS blended cementitious materials upon carbonation, indicating an increase in micro-, meso- and macro porosity. Hyvert [188] determined a notable alteration of the water sorption isotherm for plain PC, and an even more evident alteration for blended cementitious

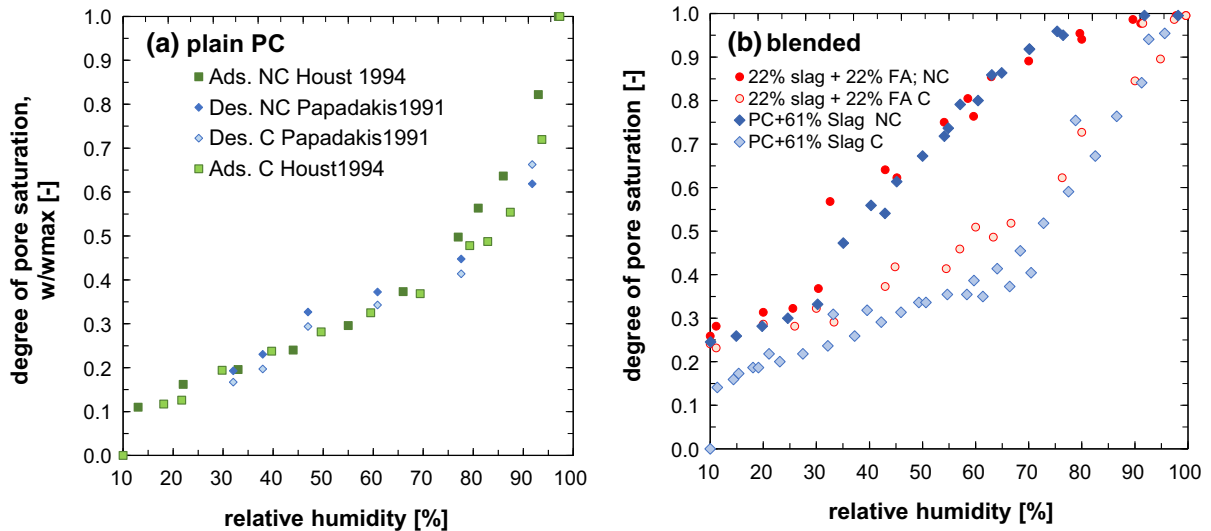


Fig. 13 Effect of carbonation on degree of pore saturation (adsorption (Ads.)/desorption (Des.) isotherms) of plain PC mortars with $w/c = 0.5$ from [38, 187] **a** and desorption

isotherms with 22% slag + 22% FA (circle) or 61% slag (rhombus) blended mortars with $w/c = 0.4$ from [74] **b** for non-carbonated (NC) and carbonated C samples

materials. The reduced degree of saturation in carbonated samples at $50\% \leq RH \leq 85\%$ affects effective CO_2 diffusion coefficients in two ways: (i) the coarsened pore structure opens the path for CO_2 diffusion, as the capillary pores are the decisive pores for high diffusion rates; and (ii) the degree of saturation is reduced in the relative humidity ranges expected under common site conditions.

Effective CO_2 diffusion coefficients in non- and fully carbonated pastes, mortars and concretes have been determined experimentally under different conditions [21, 38, 39, 44, 78, 105, 182, 187, 189–191].

Prior to carbonation it was found that the effective CO_2 diffusion coefficient decreases with:

- Decreasing w/b (decreasing capillary porosity) [21, 39, 78, 105].
- Increasing relative humidity above 40% RH, which increases the degree of water saturation [38, 105, 182, 187, 189].
- Increasing PC replacement level by FA, SF or BFS, respectively increasing the fraction of the binder that is C(-A)-S-H [21, 78, 182, 189].
- Increasing degree of hydration [182].

Upon carbonation the effective diffusion coefficient was found to:

- Decrease in the case of plain cementitious materials and blends with portlandite or LS, with

increasing ratio of portlandite carbonation [21, 38, 39, 44, 78, 105, 182, 187, 189–191] for $RH > 30\%$ [182].

- Increase with increasing cement replacement level by SF, FA, calcined clay, or mostly for BFS, due to increasing C(-A)-S-H carbonation [21, 78, 182, 190, 191]. The difference becomes more pronounced with increasing degree of water saturation.
- Increase with carbonation degree at constant high RH (93%) for all mix design unless the water to cement ratio is very low (< 0.4) [191].

In water CO_2 diffusion coefficients have been found to be $< 10^{-9} \text{ m}^2/\text{s}$ [192]. Water vapour diffusion coefficients are up to two orders of magnitude higher and increase with the difference in relative humidity, increasing w/b ratio and decrease with increasing replacement by SF or BFS [193]. As CO_2 is consumed by the carbonation reaction, CO_2 diffusion coefficients are often derived from O_2 , N_2 or He diffusion coefficients [182, 187, 189]. The value of the corresponding CO_2 diffusion coefficient depends on whether the process is limited by the molecular mass (molecular diffusion dominating in larger pores) or by the Knudsen diffusion (i.e. diffusion in small pores, where the diffusion resistance is dominated by collisions with the pore walls). Furthermore, transport may also occur as surface diffusion, if the gas interacts by a

succession of adsorption–desorption reactions with the surfaces [187, 194]. According to [187, 189] the CO_2 diffusion through non-carbonated cementitious materials is both a Knudsen and molecular diffusion process over the entire range of water saturation degree. However, upon carbonation this only holds for plain cements. For slag (approximately 80% replacement level) or FA and SF blended cements (replacement level > 44%) the pores can coarsen sufficiently that Knudsen processes involving pore walls are less important, and so transport instead becomes molecular diffusion controlled [182, 192].

Figure 14 shows effective O_2 diffusion coefficients ($D_{\text{CO}_2}/D_{\text{O}_2} \approx 1.4$) determined by Leemann et al. [21, 78] after oven drying. The determined effective diffusion coefficients are smaller or similar after carbonation for plain PC, portlandite-blended and limestone-blended cements, but higher for silica fume and slag blends, consistent with the preceding discussion for the rates of carbonation of cements containing these SCMs.

In some carbonation exposure conditions involving high pressure differences, both diffusive and convective transport coexist, and permeability may become dominant [195]. Gas permeability of carbonated and non-carbonated cementitious materials has been reported e.g. in [75, 104, 196–202] under the assumption of laminar flow. Gas permeability was in the range of $0.1 \times 10^{-9} \text{ m/s} < k_e < 10 \times 10^{-9} \text{ m/s}$. The gas permeability decreased with decreasing w/b ratio and increasing relative humidity or increasing cement

replacement by SF, FA or BFS. Upon carbonation, gas permeability was increased or at least similar as prior to carbonation. But the increase was more pronounced for BFS blended cement systems with replacement levels of 75 wt% to 90 wt% [75, 198].

Water transport properties of cementitious materials have been reported e.g. in [55, 177, 178]. The coefficient of water permeability is usually up to four orders of magnitude lower than the coefficient of gas permeability and may be related to gas permeability in dependency of the applied pressure head according to Klinkenberg explained in [203]. Upon carbonation the water permeability decreased in the case of plain and LS blended cementitious materials but increased for slag, FA and SF blended cementitious materials with moderate to high replacement levels [55, 177, 178]. Similarly, capillary sorption describes permeability of concrete where the pressure head is replaced by the capillary forces including water and water vapour transport [204, 205].

Figure 15 shows coefficients of water sorptivity determined by Jansson et al. [101] for non- and partly-carbonated cementitious materials. He observed for non-carbonated samples a decrease in sorptivity from plain PC over blends with 20 or 35 wt% FA, or 35, 50, or 65 wt% BFS. After carbonation, the sorptivity was significantly reduced for PC samples, slightly reduced for samples containing 20 wt% or 35 wt% FA, or 35 wt% or 50 wt% BFS and increased for samples containing 65 wt% BFS where a pronounced C-A-S-H carbonation can be expected. Similarly, a decrease

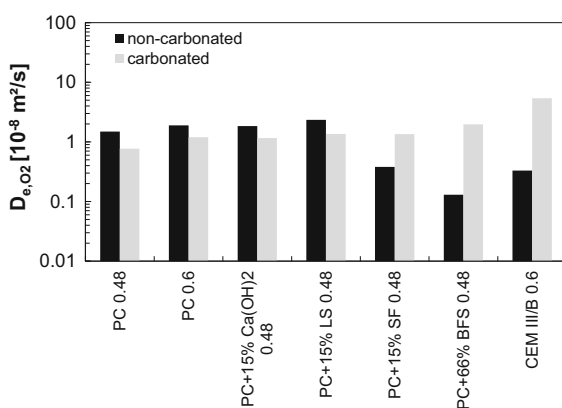


Fig. 14 O_2 effective diffusion coefficients determined for non-carbonated and carbonated samples (age 28 days, oven dried) with plain and blended cements [21, 78] given with cement type, type and amount of addition as well as w/b e.g. PC 0.48 represents plain cement with w/b 0.48

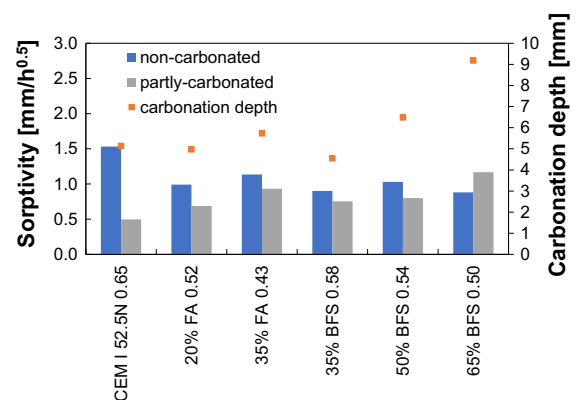


Fig. 15 Coefficients of sorptivity reported in [101] for non-carbonated and partly carbonated concretes along with the carbonation depth (small squares), the notation shows the cement type respectively the amount and type of addition and the w/b ratio



in capillary sorptivity with carbonation has been observed for plain cement materials [204].

Gas permeability data shows an increase upon carbonation for most binder types, while both the effective diffusion coefficients and the sorptivity coefficients show a decrease upon carbonation except for SF or BFS blended cementitious materials. Hence it can be assumed, that the induced pressure in gas permeability experiments alters the pore structure and mirrors mainly the transport in larger pores. Moisture transport (sorption, capillary suction and water permeability) strongly depends on the initial moisture conditions. Additionally, moisture transport may be altered by chemical interaction of water with the cement, such as re-hydration of unreacted cement and dehydrated cement pastes, changes of microstructure of C–A–S–H and secondary reaction products (depending on the type of SCM used) during moisture transport, drying shrinkage induced by the microscopic damage to pores due to capillary forces, and swelling associated with the water uptake [204–209].

7 General remarks and conclusions

It is clear that the carbonation mechanism in cementitious systems containing SCMs differs from that of plain Portland cement systems, due to the differences in the phase assemblage evolution, pore structure, and pore solution chemistry. The main difference between these systems is the role of portlandite carbonation, as it is expected that the amount of portlandite decreases at higher SCM replacement levels. This is a consequence of the lower amount of Portland clinker in the cement (which produces portlandite during its hydration) and the consumption of portlandite during the pozzolanic reaction. Portlandite carbonation is the main contributor of released water during carbonation, and usually leads to a reduction in pore size and total volume of meso- and macro- pores due to CaCO_3 precipitation. However, the literature results are to some extent contradictory, which may be due to the different measurement methods along with the different pore sizes investigated. Portlandite carbonation may furthermore be incomplete due to the covering of portlandite crystals by calcium carbonate.

With the reduced content of portlandite in SCM containing systems, carbonation will happen more rapidly in the main CO_2 -binding phases, C–S–H in the

case of using SF, and C–A–S–H phases in the case of using BFS, FA, MK and other Al-containing SCMs. Carbonation of these hydrates seems to be the main contributor to carbonation shrinkage (polymerisation shrinkage), especially for low Ca/Si C(–A)–S–H and induces coarsening of pore structure upon carbonation and reduction of mechanical strength. This is particularly critical when evaluating carbonation of concretes with SCMs, as carbonation not only reduces the overall pH, but can also lead to a coarsening in pore structure, consequently reducing the ability of these materials to withstand other forms of degradation by chemical or physical attack.

Carbonation of C(–A)–S–H does not seem to contribute to the release of water prior to complete polymerisation, but there is little investigation regarding structural changes and water released in these hydrates upon carbonation, despite their role as the dominant binding phase present in modern cements. There is an urgent need to determine the carbonation mechanism of Al substituted C–S–H phases, and those containing alkalis (C(–N)–A–S–H), as a function of exposure conditions (e.g. temperature, RH and CO_2 concentration), as these are the main CO_2 -binding phases identified in SCM-containing cements, particularly those produced with BFS. The degree of crosslinking in these gels and the reduced Ca/Si ratio compared with the C–S–H formed in plain PC systems will strongly influence how carbonation proceeds.

There is little understanding in the role of secondary hydration products in the carbonation resistance of systems with SCMs. In the case of using BFS, there is a consensus that Mg–Al layered double hydroxides (LDHs) (e.g. hydrotalcite), whose formation is favoured when using BFS with > 5 wt% MgO , seem to play a key role in improving carbonation resistance in systems where higher quantities of these phases are formed. Understanding of the roles of other phases such as AFm and/or AFt phases, as well as zeolites present in some natural SCMs, in the carbonation process is imperative if next-generation binders are to be designed to favour formation of specific microstructural features to maximise their carbonation resistance.

There is no direct correlation between the carbonation rates identified in pastes, mortars and concretes with a given binder type, independent of the SCM used, which is consistent with the differences in the pore structure induced by the addition of aggregates

Table 2 Influences on the carbonation resistance based on literature data

Parameter		Carbonation coefficient	
Name	Range	Increase ↑ decrease ↓ similar →	By a factor
w/b^a	0.4 → 0.65	↑	$> 2.0^b - > 3.5^c$
w/CaO_{reactive}	0.4 → 0.9	↑	≈ 5
type of SCM (similar replacement level 25%), which affects the CaO content (FA, SF < BFS)	FA, SF → LS → BFS → PC	↓	≈ 2.3 (FA, SF), 1.9 (LS), 1.3 (BFS)
a/c^d	change with factor 1.7 → 2.3	↑	$1.1^b - 1.5^c$
Concrete	changed to mortar	→ ↑	1.2–1.3
	changed to paste	↑	1.6–2.3
Coarse aggregate replaced by recycled aggregate		↑↓	$< 1.0 - 2.0$
Fine aggregate replaced by recycled aggregate		↑	$3.75^b - 12.25^c$
Lightweight aggregate		↓	–
Curing time	1 → 28 day	↓	1.1–2.5; ratio depends on SCM, degree of hydration, curing type
Curing temperature	20 °C → 60 °C	↓	Ratio depends e.g. on type of SCM resp. on calcium carbonate polymorph formed
	60 °C → 80 °C	↑	
Constant RH at 20 °C	50–55% RH → 90%RH	↓	0.4 ± 0.4^b
	50–55% RH → 10%RH	↓	0.0^b
Temperature	20 °C → 40 °C	↑	1.13 ± 0.04^b
			1.17 ± 0.07^c
CO ₂ -concentration when related to natural CO ₂ by the square root relationship	$> 1 - 100 \text{ vol\%CO}_2$	↓ ⁶⁾	Dependent on type and replacement level of SCM
O ₂ -, N ₂ - and CO ₂ -diffusion, H ₂ O- permeability	Upon carbonation	↑ ^c ↓ ^b	Dependent on the moisture state
O ₂ -, CO ₂ - permeability	Upon carbonation	↑ ^{b, c}	
Capillary suction	Upon carbonation	↓ ^{b, c, e}	0.3–0.9

^aWater/cement + SCM ^bplain PC ^cblended cementitious material containing pozzolan or slag ^daggregate/cement ^eexcept increase at high BFS replacement level

and reduction of paste, and variation in degrees of saturations that can be achieved in these materials. All these factors will influence gas diffusivity and dissolution, and consequently the mechanism and kinetics of carbonation. Many studies centred on evaluating carbonation of SCM containing materials, particularly for new SCMs, are limited to the assessment of mortars. The carbonation coefficients obtained in those studies cannot directly be used to predict performance of concrete made with similar materials. It is important to understand the limitations of the tests conducted, which in the case of mortars can only give an indication of concrete performance but not a full description of the behaviour of the material.

It is well known that the carbonation exposure conditions (e.g. CO₂ concentration, RH and temperature) will strongly influence the kinetics of carbonation and the type and amount of carbonation products forming in different cementitious systems. In the case of plain PC systems this is well understood, and it has been suggested that the carbonation products forming when using $> 3\%$ CO₂ are not identical to those observed in naturally carbonated materials. This is of particular importance as several national accelerated carbonation standards prescribe the use of CO₂ concentration beyond this value, which can lead to misleading results.



The effect of temperature on carbonation is usually overlooked, particularly when evaluating carbonation under accelerated testing methods, as the majority of standard test methods have similar ranges of exposure temperatures. It is evident that temperature will play a key role in reaction kinetics and gas transport, which means that the results of accelerated carbonation tests using temperature conditions with no relevance to a specific region may not provide meaningful results to predict how these concretes will perform under real exposure conditions at a temperature very different from the testing temperature.

An overview of the effect of various parameters on the carbonation coefficient, as found in current literature as summarised in this review, is given in Table 2. It should be noted that these factors are strongly dependent on the composition of the material (type and replacement level of SCM) as well as on the carbonation conditions (i.e. CO₂ concentration and RH) and the preconditioning of the material prior to testing.

The preparation of this literature review enabled the members of RILEM TC 281-CCC to elucidate that there is a large number of open questions regarding carbonation of concretes with SCMs, although these materials are extensively, if not exclusively, used in modern infrastructure development. There is great scope for future research in this area, as questions at all scales need to be resolved to determine the best strategies to be implemented to increase the longevity of modern and future infrastructure concretes.

In an effort to answer some of these questions, the RILEM TC 281-CCC (WG1&2) is currently performing a round robin test to assess the effects on carbonation resistance in pastes, mortars and concretes produced with commercial SCM containing cements, when adopting different carbonation exposure conditions outlined in currently applied standards and test specifications.

Acknowledgements The authors would like to thank all members of RILEM TC-281 CCC, for the valuable discussions regarding carbonation of concretes with SCMs, and their insight during the preparation and review of this paper.

Funding Participation of S.A. Bernal was partially sponsored by EPSRC through grants EP/R001642/1 and EP/T008407/1, and by the National Science Foundation (NSF) through award 1903457. The participation of J.L. Provis was sponsored by EPSRC through grant EP/T008407/1. N. De Belie and P. Van den Heede acknowledge the support of the Research Foundation

Flanders (FWO) for funding a Bilateral Scientific Cooperation project with China (NSFC) - G0F3619N and for funding the postdoctoral fellowship of Philip Van den Heede (project No. 3E013917). Kosmas Sideris acknowledge TITAN S.A. Cement Company GREECE and Nordia S.A. Greece are thanked for providing materials. Charlotte Thiel acknowledges the support of the German research institution DFG. Elke Gruyaert and Hanne Vanoutrive would like to thank KU Leuven for the internal funding. Natalia Alderete would like to thank the Research Foundation-Flanders (FWO-Vlaanderen) for the financial support (12ZG820N).

Compliance with ethical standards

Conflict of interest The authors declare that they have no conflict of interest.

Open Access This article is licensed under a Creative Commons Attribution 4.0 International License, which permits use, sharing, adaptation, distribution and reproduction in any medium or format, as long as you give appropriate credit to the original author(s) and the source, provide a link to the Creative Commons licence, and indicate if changes were made. The images or other third party material in this article are included in the article's Creative Commons licence, unless indicated otherwise in a credit line to the material. If material is not included in the article's Creative Commons licence and your intended use is not permitted by statutory regulation or exceeds the permitted use, you will need to obtain permission directly from the copyright holder. To view a copy of this licence, visit <http://creativecommons.org/licenses/by/4.0/>.

References

1. Kern M (1960) The hydration of carbon dioxide. *J Chem Educ* 39:1–14. <https://doi.org/10.1021/ed037p14>
2. Stumm W, Morgan J (1995) *Aquatic chemistry: chemical equilibria and rates in natural waters*. Wiley, New York
3. Adamczyk K, Prémont-Schwarz M, Pines D, Pines E, Nibbering ETJ (2009) Real-time observation of carbonic acid formation in aqueous solution. *Science* 326:1690–1694
4. Dubina E, Korat L, Black L, Strupi-Šuput J, Plank J (2013) Influence of water vapour and carbon dioxide on free lime during storage at 80 & #xB0;C, studied by Raman spectroscopy. *Spectrochimica Acta Part A Mol Biomol Spectrosc* 111:299–303. <https://doi.org/10.1016/j.saa.2013.04.033>
5. Tai C, Chen FB (2004) Polymorphism of CaCO₃, precipitated in a constant-composition environment. *AIChe J*. <https://doi.org/10.1002/aic.690440810>
6. Fernández-Díaz L, Prieto M (2010) The role of sulfate groups in controlling CaCO₃ polymorphism. *Geochim Cosmochim Acta* 74(21):6064–6076. <https://doi.org/10.1016/j.gca.2010.08.010>
7. De Choudens-Sánchez V, González LA (2009) Calcite and Aragonite Precipitation Under Controlled Instantaneous Supersaturation: elucidating the Role of CaCO₃ Saturation State and Mg/Ca Ratio on Calcium Carbonate



- Polymorphism. *J Sediment Res* 79(6):363–376. <https://doi.org/10.2110/jsr.2009.043>
8. Rodriguez-Navarro C, Kudlacz K, Cizer Ö, Ruiz-Agudo E (2015) Formation of amorphous calcium carbonate and its transformation into mesostructured calcite. *Cryst Eng Comm* 17:58–72. <https://doi.org/10.1039/c4ce01562b>
 9. Ostwald WZ (1987) Studien über die Bildung und Umwandlung fester Körper. *Z Phys Chem* 22:289–330. <https://doi.org/10.1515/zpch-1897-2233>
 10. Cizer Ö, Rodriguez-Navarro C, Ruiz-Agudo E, Elsen J, Gemert DV, Balen KV (2012) Phase and morphology evolution of calcium carbonate precipitated by carbonation of hydrated lime. *J Mater Sci* 47:6151–6165. <https://doi.org/10.1007/s10853-012-6535-7>
 11. Black L, Breen C, Yarwood J, Garbev K, Stemmermann P, Gasharova B (2007) Structural features of C–S–H(I) and its carbonation in air—A Raman spectroscopic study. Part II: carbonated phases. *J Am Ceram Soc* 90(2):908–917. <https://doi.org/10.1111/j.1551-2916.2006.01429.x>
 12. Lagerblad B (2005) Carbon dioxide uptake during concrete life cycle - state of the art. CBI Report 2, Swedish Cement and Concrete Research Institute, Stockholm Sweden
 13. Groves GW, Brough A, Richardson IG, Dobson CM (1991) Progressive changes in the structure of hardened C₃S cement pastes due to carbonation. *J Am Ceram Soc* 74(11):2891–2896. <https://doi.org/10.1111/j.1151-2916.1991.tb06859.x>
 14. Hargis CW, Lothenbach B, Müller CJ, Winnefeld F (2017) Carbonation of calcium sulfoaluminate mortars. *Cement Concr Compos* 80:123–134. <https://doi.org/10.1016/j.cemconcomp.2017.03.003>
 15. De Weerd K, Plusquellec G, Revert AB, Geiker MR, Lothenbach B (2019) Effect of carbonation on the pore solution of mortar. *Cement Concr Res* 118:38–56. <https://doi.org/10.1016/j.cemconres.2019.02.004>
 16. Shi Z, Lothenbach B, Geiker MR, Kaufmann J, Leemann A, Ferreira S, Skibsted J (2016) Experimental studies and thermodynamic modeling of the carbonation of Portland cement—metakaolin—limestone mortars. *Cement Concr Res* 88:60–72. <https://doi.org/10.1016/j.cemconres.2016.06.006>
 17. Femenias YS, Angst U, Elsener B (2017) pH-monitoring in mortar with thermally-oxidized iridium electrodes. *RILEM Tech Lett* 2:59–66
 18. Houst Y, Wittmann F (2002) Depth profiles of carbonates formed during natural carbonation. *Cement Concr Res* 32:1923–1930
 19. Grengg C, Müller B, Staudinger C, Mittermayr F, Breininger J, Ungerböck B, Borisov S, Mayr T, Dietzel M (2019) High-resolution optical pH imaging of concrete exposed to chemically corrosive environments. *Cement Concr Res* 116:231–237
 20. Khan MSH, Noushini A, Castel A (2017) Carbonation of a low-calcium fly ash geopolymer concrete. *Mag Concr Res* 69(1):24–34. <https://doi.org/10.1680/jmacr.15.00486>
 21. Leemann A, Pahlke H, Loser R, Winnefeld F (2018) Carbonation resistance of mortar produced with alternative cements. *Mater Struct* 51:114. <https://doi.org/10.1617/s11527-018-1239-3>
 22. Galan I, Glasser FP, Baza D, Andrade C (2015) Assessment of the protective effect of carbonation on portlandite crystals. *Cement Concr Res* 74:68–77. <https://doi.org/10.1016/j.cemconres.2015.04.001>
 23. Cizer Ö, Van Balen K, Elsen J, Van Gemert D (2012) Real-time investigation of reaction rate and mineral phase modifications of lime carbonation. *Constr Build Mater* 35:741–751. <https://doi.org/10.1016/j.conbuildmat.2012.04.036>
 24. Shah V, Scrivener K, Bhattacharjee B, Bishnoi S (2018) Changes in microstructure characteristics of cement paste on carbonation. *Cement Concr Res* 109:184–197. <https://doi.org/10.1016/j.cemconres.2018.04.016>
 25. Shah V, Bishnoi S (2018) Carbonation resistance of cements containing supplementary cementitious materials and its relation to various parameter of concrete. *Constr Build Mater* 178:219–232. <https://doi.org/10.1016/j.conbuildmat.2018.05.162>
 26. Auroy M, Poyet S, Le Bescop P, Torrenti JM, Charpentier T, Moskura M, Bourbon X (2018) Comparison between natural and accelerated carbonation (3% CO₂): impact on mineralogy, microstructure, water retention and cracking. *Cement Concr Res* 109:64–80. <https://doi.org/10.1016/j.cemconres.2018.04.012>
 27. Morandeau A, Thiéry M, Dangla P (2014) Investigation of the carbonation mechanism of CH and C–S–H in terms of kinetics, microstructure changes and moisture properties. *Cement Concr Res* 56:153–170. <https://doi.org/10.1016/j.cemconres.2013.11.015>
 28. Visser JHM (2014) Influence of the carbon dioxide concentration on the resistance to carbonation of concrete. *Constr Build Mater* 67:8–13. <https://doi.org/10.1016/j.conbuildmat.2013.11.005>
 29. Sevelsted TF, Skibsted J (2015) Carbonation of C–S–H and C–A–S–H samples studied by ¹³C, ²⁷Al and ²⁹Si MAS NMR spectroscopy. *Cement Concr Res* 71:56–65. <https://doi.org/10.1016/j.cemconres.2015.01.019>
 30. Steiner S, Lothenbach B, Borgschulte A, Proske T, Winnefeld F (2018) Effect of relative humidity on the carbonation rate of portlandite, calcium silicate hydrates and ettringite. 20. In: Internationale Baustofftagung (ibausil), 12.—14. September 2018, Weimar Germany
 31. Castellote M, Fernandez L, Andrade C, Alonso C (2009) Chemical changes and phase analysis of OPC pastes carbonated at different CO₂ concentrations. *Mater Struct* 42:515–525. <https://doi.org/10.1617/s11527-008-9399-1>
 32. Hyvert N, Sellier A, Duprat F, Rougeau P, Francisco P (2010) Dependency of C–S–H carbonation rate on CO₂ pressure to explain transition from accelerated tests to natural carbonation. *Cement Concr Res* 40:1582–1589. <https://doi.org/10.1016/j.cemconres.2010.06.010>
 33. Wu B, Ye G (2019) Study of carbonation rate of synthetic C–S–H by XRD, NMR and FTIR. *HERON* 64(1–2):21–38
 34. Chen JJ, Thomas JJ, Jennings HM (2006) Decalcification shrinkage of cement paste. *Cement Concr Res* 36:801–809. <https://doi.org/10.1016/j.cemconres.2005.11.003>
 35. Groves GW, Rodway DI, Richardson IG (1990) The carbonation of hardened cement pastes. *Advances in Cement Research* 3(11):117–125. <https://doi.org/10.1680/adr.1990.3.11.117>

36. Swenson EG, Sereda PJ (1968) Mechanism of the carbonation shrinkage of lime and hydrated cement. *J Appl Chem* 18:111–117
37. Galan I, Andrade C, Mora P, Sanjuan MA (2010) Sequestration of CO₂ by concrete carbonation. *Environ Sci Technol* 44:3181–3186. <https://doi.org/10.1021/es903581d>
38. Papadakis VG, Vayenas CG, Fardis MN (1991) Fundamental modeling and experimental investigation of concrete carbonation. *ACI Mater J* 88:363–373
39. Papadakis VG, Vayenas CG, Fardis MN (1991) Physical and chemical characteristics affecting the durability of concrete. *ACI Mater J* 88:186–196
40. Visser JHM (2012) Accelerated carbonation testing of mortar with supplementary cementing materials: limitation of the acceleration due to drying. *Heron* 57(3):231–246
41. von Greve-Dierfeld S (2015) Bemessungsregeln zur Sicherstellung der Dauerhaftigkeit von XC exponierten Stahlbetonbauteilen (in German). Dissertation, Technical University Munich
42. Sisomphon K, Franke L (2007) Carbonation rates of concretes containing high volume of pozzolanic materials. *Cement Concr Res* 37(12):1647–1653. <https://doi.org/10.1016/j.cemconres.2007.08.014>
43. Hunkeler F, Greve-Dierfeld S (2019) Karbonatisierung von Beton und Korrosionsgeschwindigkeit der Bewehrung im karbonatisierten Beton (Carbonation of concrete and reinforcement corrosion rate in carbonated concrete). Research report published by the Swiss Federal Roads Office VSS No. 696
44. Leemann A, Moro F (2017) Carbonation of concrete: the role of CO₂ concentration, relative humidity and CO₂ buffer capacity. *Mater Struct* 50:30. <https://doi.org/10.1617/s11527-016-0917-2>
45. Johannesson B, Utgenannt P (2001) Microstructural changes caused by carbonation of cement mortar. *Cement Concr Res* 31(6):925–931. [https://doi.org/10.1016/S0008-8846\(01\)00498-7](https://doi.org/10.1016/S0008-8846(01)00498-7)
46. Taylor HF (1997) *Cement chemistry*, vol 2. Thomas Telford, London
47. Lothenbach B, Scrivener K, Hooton RD (2011) Supplementary cementitious materials. *Cement Concr Res* 41(12):1244–1256. <https://doi.org/10.1016/j.cemconres.2010.12.001>
48. Juenger M, Snellings R, Bernal SA (2019) Supplementary cementitious materials: new sources, characterization, and performance insights. *Cement Concr Res* 122:257–273. <https://doi.org/10.1016/j.cemconres.2019.05.008>
49. De Belie N, Soutos M, Gruyaert E (2018) Properties of fresh and hardened concrete containing supplementary cementitious materials, State-of-the-Art Report of the RILEM Technical Committee 238-SCM Working Group 4. Springer, Berlin
50. Scrivener K, Lothenbach B, De Belie N, Gruyaert E, Skibsted J, Snellings R, Vollpracht A (2015) TC 238-SCM: hydration and microstructure of concrete with SCMs. *Mater Struct* 48:835–862. <https://doi.org/10.1617/s11527-015-0527-4>
51. Villagrán-Zaccardi Y, Vollpracht A, Gruyaert E, De Belie N (2018) Recommendation of RILEM TC 238-SCM: determination of the degree of reaction of siliceous fly ash and slag in hydrated cement paste by the selective dissolution method. *Mater Struct*. <https://doi.org/10.1617/s11527-017-1134-3>
52. Gruyaert E, Van Den Heede P, De Belie N (2013) Carbonation of slag concrete: effect of the cement replacement level and curing on the carbonation coefficient—effect of carbonation on the pore structure. *Cement Concr Compos* 35(1):39–48. <https://doi.org/10.1016/j.cemconcomp.2012.08.024>
53. Gruyaert E. (2010) Effect of blast furnace slag as cement replacement on hydration, microstructure, strength and durability of concrete. Dissertation, Ghent University
54. Herterich J (2017) Microstructure and Phase Assemblage of Low-Clinker Cements during Early Stages of Carbonation. Dissertation, School of Civil Engineering at the University of Leeds
55. Deschner F, Winnefeld F, Lothenbach B, Seufert S, Schwesig P, Dittrich S, Goetz-Neunhoffer F, Neubauer J (2012) Hydration of Portland cement with high replacement by siliceous fly ash. *Cement Concr Res* 42(10):1389–1400. <https://doi.org/10.1016/j.cemconres.2012.06.009>
56. Prentice D, Bernal S, Bankhead M, Hayes M, Provis J (2018) Phase evolution of slag-rich cementitious grouts for immobilisation of nuclear wastes. *Adv Cement Res* 30(8):345–360. <https://doi.org/10.1680/jadcr.17.00198>
57. Vollpracht A, Lothenbach B, Snellings R, Haufe J (2016) The pore solution of blended cements: a review. *Mater Struct* 46:3341–3367. <https://doi.org/10.1617/s11527-015-0724-1>
58. Azad VJ, Suraneni P, Trejo D, Weiss WJ, Isgor B (2018) Thermodynamic investigation of allowable admixed chloride limits in concrete. *ACI Mater J* 115(5):727–738
59. Kunther W, Zhuo D, Skibsted J (2015) Thermodynamic modelling of Portland cement—metakaolin—limestone blends. In: 1st international conference on calcined clays for sustainable concrete doi.org/<https://doi.org/10.1007/978-94-017-9939-3>
60. Skocek J, Zajac M, Stabler C, Ben Haha M (2017) Predictive modelling of hydration and mechanical performance of low Ca composite cements: possibilities and limitations from industrial perspective. *Cement Concr Res* 100:68–83. <https://doi.org/10.1016/j.cemconres.2017.05.020>
61. Lothenbach B, Rentsch D, Wieland E (2014) Hydration of a silica fume blended low-alkali shotcrete cement. *Phys Chem Earth Parts A/B/C* 70–71:3–16. <https://doi.org/10.1016/j.pce.2013.09.007>
62. McPolin DO, Basheer PAM, Long AE (2009) Carbonation and pH in mortars manufactured with supplementary cementitious materials. *J Mater Civil Eng* 21(5):217–225
63. Sadrmomtazi A, Khoshkbiari R, Tahmouresi B (2018) Effect of fly ash and silica fume on transition zone, pore structure and permeability of concrete. *Mag Concrete Res* 70(10):519–532. <https://doi.org/10.1680/jmacr.16.00537>
64. De Weerd K, Ben Haha M, Saout G, Kjellsen KO, Justnes H, Lothenbach B (2011) Hydration mechanism of ternary Portland cements containing limestone powder and fly ash. *Cement Concr Res* 41(3):279–291. <https://doi.org/10.1016/j.cemconres.2010.11.014>

65. De Weerd K, Ben Haha M, Le Saout G, Kjellsen KO, Justness H, Lothenbach B (2012) The effect of temperature on the hydration of composite cements containing limestone powder and fly ash. *Mater Struct* 45:1101–1114. <https://doi.org/10.1617/s11527-011-9819-5>
66. Lothenbach B, Le Saout G, Galucci E, Scrivener K (2008) Influence of limestone on the hydration of Portland cements. *Cement Concr Res* 38(6):848–860. <https://doi.org/10.1016/j.cemconres.2008.01.002>
67. Tennis PE, Thomas MDA, Weiss WJ (2011) State-of-the-Art Report on use of limestone in cements at levels up to 15%. Report of the Portland Cement Association, Illinois
68. Snellings R, Mertens G, Elsen J (2012) Supplementary cementitious materials. *Rev Miner Geochem* 74:211–278. <https://doi.org/10.2138/rmg.2012.74.6>
69. Irbe L (2019) The role of aluminium in C-A-S-H during chemical attack on concrete. Dissertation TU München, Germany
70. Li J, Yu Q, Huang H, Yin S (2019) Effects of Ca/Si ratio, aluminum and magnesium on the carbonation behavior of calcium silicate hydrate. *Materials* 12:1268. <https://doi.org/10.3390/ma12081268>
71. Ortaboy S, Li J, Geng G, Myers R, Monteiro PJM, Maboudian R, Carraro C (2017) Effects of CO₂ and temperature on the structure and chemistry of C-(A-)S-H investigated by Raman spectroscopy. *RSC Adv* 7:48925–48933. <https://doi.org/10.1039/c7ra07266j>
72. Drouet E, Poyet S, Le Bescop P, Torrenti JM, Bourbon X (2019) Carbonation of hardened cement pastes: influence of temperature. *Cement Concr Res* 115:445–459. <https://doi.org/10.1016/j.cemconres.2018.09.019>
73. Thiery M, Faure P, Morandau A, Platre G, Boutelou J, Dangel P, Baroghel-Bouney V (2011) Effect of carbonation on the microstructure and moisture properties of cement-based materials. In: 12th International conference on durability of building materials and components, 12th–15th April 2011, Porto Portugal
74. Auroy M, Poyet S, Le Bescop P, Torrenti JM (2015) Impact of carbonation on unsaturated water transport properties of cement-based materials. *Cement Concr Res* 74:44–58. <https://doi.org/10.1016/j.cemconres.2015.04.002>
75. Borges P, Costa J, Milestone N, Lynsdale C, Streatfield R (2010) Carbonation of CH and C-S-H in composite cement pastes containing high amounts of BFS. *Cement Concr Res* 40(2):284–292. <https://doi.org/10.1016/j.cemconres.2009.10.020>
76. Van den Heede P, De Schepper M, De Belie N (2019) Accelerated and natural carbonation of concrete with high volumes of fly ash: chemical, mineralogical and microstructural effects. *R Soc Open Sci* 6:181665. <https://doi.org/10.1098/rsos.181665>
77. Branch JL, Epps R, Kosson DS (2018) The impact of carbonation on bulk and ITZ porosity in microconcrete materials with fly ash replacement. *Cement Concr Res* 103:170–178. <https://doi.org/10.1016/j.cemconres.2017.10.012>
78. Leemann A, Loser R, Münch B, Lura P (2017) Steady-state O₂ and CO₂ diffusion in carbonated mortars produced with blended cements. *Mater Struct* 50:247. <https://doi.org/10.1617/s11527-017-1118-3>
79. Parrott L (1996) Some effects of cement and curing upon carbonation and reinforcement corrosion in concrete. *Mater Struct* 29:164–173. <https://doi.org/10.1007/BF02486162>
80. Wierig H (1985) Longtime studies on the carbonation on concrete under normal outdoor exposure. RILEM Seminar on the Durability of Concrete Structures under normal outdoor exposure. *Mater Struct* 18:323. <https://doi.org/10.1007/BF02472928>
81. Younsy A, Turcry P, Ait-Mokhtar A, Staquet S (2013) Accelerated carbonation of concrete with high content of mineral additions: effect of interactions between hydration and drying. *Cement Concr Res* 43:25–33. <https://doi.org/10.1016/j.cemconres.2012.10.008>
82. Morandau A, Thiery M, Dangla P (2015) Impact of accelerated carbonation on OPC cement paste blended with fly ash. *Cement Concr Res* 67:226–236. <https://doi.org/10.1016/j.cemconres.2015.10.003>
83. Saillio M, Bertin M, Baroghel-Bouney V (2019) Coupling effect and durability in cement pastes and concretes with supplementary cementitious materials. In: International conference on sustainable materials, system and structures (SMSS2019), pp 20–22 March 2019, Rovinj Croatia
84. Hussain S, Bhunia D, Singh S (2017) Comparative study of accelerated carbonation of plain cement and fly-ash concrete. *J Build Eng* 10:26–31. <https://doi.org/10.1016/j.jobe.2017.02.001>
85. Van den Heede P, De Belie N (2015) Durability Based Life Cycle Assessment of Concrete with Supplementary Cementitious Materials Exposed. In: International Conference on Sustainable Structural Concrete, La Plata Argentina, (1):13–24, LEMIT (Laboratorio de Entrenamiento Multidisciplinario para la Investigación Tecnológica)
86. Lu C, Wang W, Li Q, Hao M, Xu Y (2018) Effects of micro-environmental climate on the carbonation depth and the pH value in fly ash. *J Clean Prod* 181:309–317. <https://doi.org/10.1016/j.jclepro.2018.01.155>
87. Burdon D (2006) The durability of concrete containing high levels of fly ash. PCA R&D Serial No. 2989. Portland Cement Association, Skokie US
88. Sideris K, Savva A (2001) Resistance of fly ash and natural pozzolans blended cement mortars and concrete to carbonation, sulfate attack and chloride ion penetration. In: Seventh CANMET/ACI international conference on fly ash, silica fume, slag and natural pozzolans in concrete, Mandras India
89. Papadakis V (1999) Effect of fly ash on Portland cement systems: part I. Low-calcium fly ash. *Cement Concr Res* 29(11):1727–1736. [https://doi.org/10.1016/S0008-8846\(99\)00153-2](https://doi.org/10.1016/S0008-8846(99)00153-2)
90. Papadakis V (2000) Effect of fly ash on Portland cement systems. Part II: high calcium fly ash. *Cement Concr Res* 30(10):1647–1654. [https://doi.org/10.1016/S0008-8846\(00\)00388-4](https://doi.org/10.1016/S0008-8846(00)00388-4)
91. Thomas M, Matthews J (1992) Carbonation of fly ash concrete. *Mag Concr Res* 44(160):217–228. <https://doi.org/10.1680/mac.1992.44.160.217>
92. Wu B, Ye G (2019) X-ray diffraction study of carbonation rate of C-S-H with different Ca/Si ratio. *International*



- conference on sustainable materials, system and structures (SMSS2019), 20-22 March 2019, Rovinj Croatia
93. Newlands M (2001) Development of a simulated natural carbonation test of selected CEM II concretes. Dissertation, University Dundee
 94. Thienel KC, Beuntner N (2012) Effects of calcined clay as low carbon cementing materials on the properties of concrete. Concrete in the Low Carbon Era, 9.-11. July, Dundee UK
 95. Shao Y, Rostami V, He Z, Boyd A (2014) Accelerated carbonation of Portland limestone cement. *J Mater Civil Eng* 26(1):117–124. [https://doi.org/10.1061/\(ASCE\)MT.1943-5533.0000773](https://doi.org/10.1061/(ASCE)MT.1943-5533.0000773)
 96. Leemann A, Nygaard P, Kaufmann J, Loser R (2015) Relation between carbonation resistance, mix design and exposure of mortar and concrete. *Cement Concr Compos* 62:33–43. <https://doi.org/10.1016/j.cemconcomp.2015.04.020>
 97. von Greve-Dierfeld S, Gehlen C (2016) Performance-based durability design, carbonation, part 2—classification of concrete. *Struct Concr* 17:523–532. <https://doi.org/10.1002/suco.201600067>
 98. Ribeiro A, Santos T, Goncalves A (2018) Performance of concrete exposed to natural carbonation: use of the k-value concept. *Constr Build Mater* 175:360–370. <https://doi.org/10.1016/j.conbuildmat.2018.04.206>
 99. Nobis C, Vollpracht A (2015) k-Value for Carbonation of Concretes with Supplementary Cementitious Materials. In: 27th Biennial National Conference of the Concrete Institute of Australia in Conjunction with the 69th RILEM Week—Concrete 2015, 30 Aug.—2 Sept. 2015, Melbourne Australia
 100. Shi Z (2016) Durability of Portland Cement - Calcined Clay - Limestone Blends. Dissertation. Aarhus University Denmark
 101. Jansson H, Snibb R, Bohlin K, Löfgren I (2017) Carbonation of concrete with mineral additions. XXIII Nordic Concrete Research Symposium, Aalborg Denmark
 102. Müller C (2019) Konzepte zur Herstellung von ressourceneffizienten Betonen am Beispiel Zement (Concepts for the production of resource efficient concretes with the example cement). *Beton* 69(9):311–314
 103. Imamoto K, Neves R, Torrent R (2016) Carbonation rate in old structures assessed with air-permeability site NDT. IABMAS 2016 Paper 426, Foz do Iguaçu, Brazil, 26–30 June 2016
 104. Russel D, Basheer PAM, Rankin IB, Long AE (2001) Effect of relative humidity and air permeability on prediction of the rate of carbonation of concrete. *Struct Build* 146(3):319–526
 105. Jung SH, Lee MK, Oh BH (2011) Measurement device and characteristics of diffusion coefficient of carbon dioxide in concrete. *ACI Mater J* 108(6):589–595
 106. Pham S, Prince W (2014) Effects of carbonation on the microstructure of cement materials: influence of measuring methods and types of cement. *Int J Concr Struct Mater* 8:327–333. <https://doi.org/10.1007/s40069-014-0079-y>
 107. Cortvriendt M, Gruyaert E, Vanoutrive H (2019) Comparison between the carbonation of cement paste, mortar and concrete with supplementary cementitious materials. Master Thesis KU Leuven
 108. Schwartzentruber A, Catherine C (2000) Method of the concrete equivalent mortar (CEM)—A new tool to design concrete containing admixture (in French). *Mater Struct* 33(232):475–482. <https://doi.org/10.1007/BF02480524>
 109. Akcay B (2017) Aggregate restraining effect on autogenous shrinkage of cementitious materials. *KSCE J Civil Eng* 22(6):3102–3111. <https://doi.org/10.1007/s12205-017-0635-5>
 110. Guo H, Shi C, Guan X, Zhu J, Ding Y, Ling TC, Zhang H, Wang Y (2018) Durability of recycled aggregate concrete—A review. *Cement Concr Compos* 89:251–259. <https://doi.org/10.1016/j.cemconcomp.2018.03.008>
 111. Silva RV, Neves R, de Brito J, Dhir RK (2015) Carbonation behaviour of recycled aggregate concrete. *Cement Concr Compos* 62:22–32. <https://doi.org/10.1016/j.cemconcomp.2015.04.017>
 112. Singh N, Singh SP (2016) Carbonation and electrical resistance of self-compacting concrete made with recycled concrete aggregates and metakaolin. *Constr Build Mater* 121:400–409. <https://doi.org/10.1016/j.conbuildmat.2016.06.009>
 113. de Brito J, Ferreira J, Pacheco J, Soares D, Guerreiro M (2016) Structural, material, mechanical and durability properties and behaviour of recycled aggregates concrete. *J Build Eng* 6:1–16. <https://doi.org/10.1016/j.job.2016.02.003>
 114. Kou SC, Poon CS (2012) Enhancing the durability properties of concrete prepared with coarse recycled aggregate. *Constr Build Mater* 35:69–76. <https://doi.org/10.1016/j.conbuildmat.2012.02.032>
 115. Buyle-Bodin F, Hadjieva-Zaharieva R (2002) Influence of industrially produced recycled aggregates on flow properties of concrete. *Mater Struct* 35:504–509. <https://doi.org/10.1007/BF02483138>
 116. Amorim P, de Brito J, Evangelista L (2012) Concrete made with coarse concrete aggregate: influence of curing on durability. *ACI Mater J* 109:195–204
 117. Jiménez LF, Moreno EI (2015) Durability indicators in high absorption recycled aggregate concrete. *Adv Mater Sci Eng* ID505423:8. <https://doi.org/10.1155/2015/505423>
 118. Limbachiya M, Meddah MS, Ouchagour Y (2012) Performance of portland/silica fume cement concrete produced with recycled concrete aggregate. *ACI Mater J* 109:91–100
 119. Xiao J, Lei B, Zhang C (2012) On carbonation behavior of recycled aggregate concrete. *Sci China Technol Sci* 55:2609–2616. <https://doi.org/10.1007/s11431-012-4798-5>
 120. Pedro D, de Brito J, Evangelista L (2015) Performance of concrete made with aggregates recycled from precasting industry waste: influence of the crushing process. *Mater Struct* 48:3965–3978. <https://doi.org/10.1617/s11527-014-0456-7>
 121. Otsuki N, Miyazato S, Yodsudjai W (2003) Influence of recycled aggregate on interfacial transition zone, strength, chloride penetration and carbonation of concrete. *J Mater Civil Eng* 15(5):443–451. [https://doi.org/10.1061/\(ASCE\)0899-1561\(2003\)15:5\(443\)](https://doi.org/10.1061/(ASCE)0899-1561(2003)15:5(443))
 122. Zhang K, Xiao J (2018) Prediction model of carbonation depth for recycled aggregate concrete. *Cement Concr*



- Compos 88:86–99. <https://doi.org/10.1016/j.cemconcomp.2018.01.013>
123. Kisku N, Joshi H, Ansari M, Panda SK, Nayak S, Dutta SC (2017) A critical review and assessment for usage of recycled aggregate as sustainable construction material. *Constr Build Mater* 131:721–740. <https://doi.org/10.1016/j.conbuildmat.2016.11.029>
 124. Xiao J, Lu D, Ying J (2013) Durability of recycled aggregate concrete: an overview. *J Adv Concr Technol* 11:347–359. <https://doi.org/10.3151/jact.11.347>
 125. Levy SM, Helene P (2004) Durability of recycled aggregates concrete: a safe way to sustainable development. *Cement Concr Res* 34:1975–1980. <https://doi.org/10.1016/j.cemconres.2004.02.009>
 126. Medina C, Frías M, Sánchez de Rojas MI, Thomas C, Polanco JA (2012) Gas permeability in concrete containing recycled ceramic sanitary ware aggregate. *Constr Build Mater* 37:597–605. <https://doi.org/10.1016/j.conbuildmat.2012.08.023>
 127. Evangelista L, de Brito J (2010) Durability performance of concrete made with fine recycled concrete aggregates. *Cement Concr Compos* 32:9–14. <https://doi.org/10.1016/j.cemconcomp.2009.09.005>
 128. Zega CJ, Di Maio AA (2011) Use of recycled fine aggregate in concretes with durable requirements. *Waste Manag* 31:2336–2340. <https://doi.org/10.1016/j.wasman.2011.06.011>
 129. Geng J, Sun J (2013) Characteristics of the carbonation resistance of recycled fine aggregate concrete. *Constr Build Mater* 49:814–820. <https://doi.org/10.1016/j.conbuildmat.2013.08.090>
 130. Vieira T, Alves A, de Brito J, Correia JR, Silva RV (2016) Durability-related performance of concrete containing fine recycled aggregates from crushed bricks and sanitary ware. *Mater Des* 90:767–776. <https://doi.org/10.1016/j.matdes.2015.11.023>
 131. Sveindottir EL, Maage M, Poot S, Hansen EA, Bennenck HW, Helland S, Norden G, Kwint E, Milencovic A, Smeplass S, Tarquis F, Holand I, Price B, van Breugel K, Thienel KC (1998) LWAC Material Properties - State-of-the-Art. The European Union – Brite EuRam III, Gouda Netherlands
 132. Hossain KMA, Ahmed S, Lachemi M (2011) Lightweight concrete incorporating pumice based blended cement and aggregate: mechanical and durability characteristics. *Constr Build Mater* 25:1186–1195. <https://doi.org/10.1016/j.conbuildmat.2010.09.036>
 133. Vaysburd A (1992) Durability of lightweight concrete and its connections with the composition of concrete, design, and construction methods. *ACI Spec Publ* 136:295–318
 134. Holm TA, Bremner TW, Vaysburd A (1988) Carbonation of marine structural lightweight concretes. *ACI Spec Publ* 109:667–676
 135. Thienel KC, Schmidt-Döhl F, Feldrappe V (2000) In-Situ Tests on Existing LWAC Structures. In: Second International Conference on Structural Lightweight Aggregate Concrete, Kristiansand Norway
 136. Swamy RN, Jiang ED (1992) Pore structure and carbonation of lightweight concrete after years exposure. *Mater Sci*. <https://doi.org/10.14359/4012>
 137. Expanded Shale, Clay & Slate Institute (2006). Internal Curing. Using Expanded Shale, Clay and Slate Lightweight Aggregate. Publication n° 4362 (<https://www.escsi.org/internal-curing/technical-docs/> Accessed date: 2019-06-03)
 138. Sanjuan A, Andrade C, Cheyrezy M (2003) Concrete carbonation tests in natural and in accelerated conditions. *Adv Cement Res* 15(4):171–180. <https://doi.org/10.1680/adcr.2003.15.4.171>
 139. Fattuhi NI (1988) Concrete carbonation as influenced by curing regime. *Cement Concr Res* 18(3):426–430. [https://doi.org/10.1016/0008-8846\(88\)90076-2](https://doi.org/10.1016/0008-8846(88)90076-2)
 140. Sanjuán MÁ, Estévez E, Argiz C, del Barrio D (2018) Effect of curing time on granulated blast-furnace slag cement mortars carbonation. *Cement Concr Compos* 90(2):257–265. <https://doi.org/10.1016/j.cemconcomp.2018.04.006>
 141. Bier T (1986) Influence of type of cement and curing on carbonation progress and pore structure of hydrated cement pastes. *Symp M Microstruct Dev During Hydr Cement* 85:123. <https://doi.org/10.1557/PROC-85-123>
 142. Ekolu SO (2016) A review on effects of curing, sheltering, and CO₂ concentration upon natural carbonation of concrete. *Constr Build Mater* 127:306–320. <https://doi.org/10.1016/j.conbuildmat.2016.09.056>
 143. Sideris KK, Zarras SC (2006) Influence of curing time on the durability of concrete against carbonation induced corrosion. In: 16th Hellenic Concrete Conference, October 25–27, Alexandroupolis Greece
 144. Saillio M (2012) Interactions physico-chimiques ions-matrice dans les bétons sains ou carbonatés: influence sur le transport ionique. Dissertation (in French), University Paris-Est
 145. Bucher R, Diederich P, Escadeilla G, Cyr M (2017) Service life of metakaolin-based concrete exposed to carbonation - Comparison with blended cement containing fly ash, blast furnace slag and limestone filler. *Cement Concr Res* 99:18–29. <https://doi.org/10.1016/j.cemconres.2017.04.013>
 146. Atis CD (2003) Accelerated carbonation and testing of concrete made with fly ash. *Constr Build Mater* 17:147–152. [https://doi.org/10.1016/S0950-0618\(02\)00116-2](https://doi.org/10.1016/S0950-0618(02)00116-2)
 147. Thomas M (2004) The effect of curing and concrete quality on the durability of concretes with high-volumes of supplementary cementing materials. University of New Brunswick Fredericton, Canada
 148. Li G, Yao F, Li P, Yan C (2016) Long-term carbonation resistance of concrete under initial high-temperature curing. *Mater Struct* 49(7):2799–2806. <https://doi.org/10.1617/s11527-015-0686-3>
 149. Schiessl P, Gehlen C et. al. (2006) fib Bulletin 34: Model Code for service life design. ISBN: 2-88394-074-6
 150. Hainer S, Prosk T, Graubner C (2015) Effect of curing on the carbonation of concrete (Einfluss der Nachbehandlung auf das Karbonatisierungsverhalten von Beton aus klinkerarmen Zementen, in German). *Beton- und Stahlbetonbau* 110:1. <https://doi.org/10.1002/best.201400042>
 151. Hunkeler F, Lammer A (2012) Requirements for the carbonation resistance of concrete (in German). AGB2008/012. Federal Roads Office FEDRO, Switzerland

152. Von Greve-Dierfeld S, Gehlen C (2016) Performance-based durability design, carbonation, part 1—benchmarking of deemed-to-satisfy rules. *Struct Concr* 17:309–328. <https://doi.org/10.1002/suco.201600066>
153. Verbeck G (1958) Carbonation of hydrated Portland cement. *ASTM Spec Tech Publ* 205:17–36. <https://doi.org/10.1520/STP39460S>
154. Thiery M (2005) Modélisation de la carbonatation atmosphérique des matériaux cimentaires (in French). Dissertation, Ecole Nationale des Ponts et Chaussées (ENPC) Paris
155. Galan I, Andrade C, Castellote M (2013) Natural and accelerated CO₂ binding kinetics in cement paste at different relative humidities. *Cement Concr Res* 49:21–28. <https://doi.org/10.1016/j.cemconres.2013.03.009>
156. Essai pour béton durci—Essai de carbonatation accélérée—Mesure de l'épaisseur de béton carbonaté. XP P 18-458, French standard, AFNOR 2008
157. Testing hardened concrete—Part 12: Determination of the potential carbonation resistance of concrete: Accelerated carbonation method. EN 12390-12:2020
158. Diamond S (1971) A critical comparison of mercury porosimetry and capillary condensation pore size distributions of portland cement pastes. *Cement Concr Res* 1:531–545. [https://doi.org/10.1016/0008-8846\(71\)90058-5](https://doi.org/10.1016/0008-8846(71)90058-5)
159. Baroghel-Bouny V (2007) Water vapour sorption experiments on hardened cementitious materials part I: essential tool for analysis of hygral behaviour and its relation to pore structure. *Cement Concr Res* 37:414–437. <https://doi.org/10.1016/j.cemconres.2006.11.019>
160. De Ceukelaire L, Van Nieuwenburg D (1993) Accelerated carbonation of a blast-furnace cement concrete. *Cement Concr Res* 23(2):442–452. [https://doi.org/10.1016/0008-8846\(93\)90109-M](https://doi.org/10.1016/0008-8846(93)90109-M)
161. Saetta AV, Vitaliani RV (2004) Experimental investigation and numerical modeling of carbonation process in reinforced concrete structures: part I: theoretical formulation. *Cement Concr Res* 34:571–579. <https://doi.org/10.1016/j.cemconres.2003.09.009>
162. Glasser FP, Pedesen J, Goldthorpe K, Atkins M (2005) Solubility reactions of cement components with NaCl solutions: ca(OH)₂ and CSH. *Adv Cement Res* 17(2):57–64. <https://doi.org/10.1680/adcr.2005.17.2.57>
163. Chaussadent T (1999) Etats des lieux et réflexions sur la carbonatation du béton armé. Laboratoire Central des Ponts et Chausees (LCPC). https://www.ifsttar.fr/fileadmin/user_upload/editions/lcpc/ERLPC/ERLPC-OA-LCPC-OA29.pdf
164. He R (2010) A study on carbonation for low calcium fly ash concrete under different temperature and relative humidity. *EJGE* 15(Q):1871–1877
165. Tai CY, Chen FB (1998) Polymorphism of CaCO₃, precipitated in a constant-composition environment. *AIChE J* 44:1790–1798. <https://doi.org/10.1002/aic.690440810>
166. Gehlen C (2000) Probabilistische Lebensdauerbemessung von Stahlbetonbauwerken: Zuverlässigkeitsbetrachtungen zur wirksamen Vermeidung von Bewehrungskorrosion (in German). Dissertation, RWTH Aachen
167. Uomoto T, Takada Y (1993) Factors affecting concrete carbonation ratio. *Doboku Gakkai Ronbunshu* 1992 451:119–128. https://doi.org/10.2208/jscej.1992.451_119
168. Thiel C (2019) Einfluss von CO₂-Druck auf das Porengefüge zementgebundener Werkstoffe während der Carbonatisierung. Dissertation, Technische Universität München
169. Van den Heede P, De Belie N (2019) Difference in carbonation behavior at 0.04%, 1% and 10% CO₂ for high-volume fly ash mortar: effect on internal humidity, and resistivity. In: International conference on sustainable materials, systems and structures (SMSS2019), March 18–22, Rovinj, Croatia, vol. 3, pp 317–324
170. Thiery M, Villain G, Dangla P, Platret G (2007) Investigation of the carbonation front shape on cementitious materials: effects of the chemical kinetics. *Cement Concr Res* 37(7):1047–1058. <https://doi.org/10.1016/j.cemconres.2007.04.002>
171. Bernal SA, Provis JL, Brice DG, Kilcullen A, Duxson P, van Deventer JSJ (2012) Accelerated carbonation testing of alkali-activated binders significantly underestimate the real service life: the role of the pore solution. *Cement Concr Res* 42:1317–1326
172. Thiel C, Schön A, Gehlen C (2018) Einfluss der CO₂-Permeation auf die Carbonatisierung zementgebundener Baustoffe. 20. In: Internationale Baustofftagung (ibautil), 12.–14. September 2018, Weimar Germany
173. Knöfel D, Eßer G (1993) Einfluss unterschiedlicher Kohlendioxidkonzentrationen auf Zementmörtel (in German). *Werkstoffwissenschaften und Bausanierung*, Wittmann F H, Bartz W J (eds), Tagungsbericht des 3. Int. Koll. pp 1408–1418
174. Da Silva FG, Helene P, Castro-Borges P, Liborio J (2009) Sources of variations when comparing concrete carbonation results. *J Mater Civil Eng* 21(7):333. [https://doi.org/10.1061/\(ASCE\)0899-1561\(2009\)21:7\(333\)](https://doi.org/10.1061/(ASCE)0899-1561(2009)21:7(333))
175. Rozière E, Loukili A, Cussigh F (2009) A performance based approach for durability of concrete exposed to carbonation. *Constr Build Mater* 23(1):190–199. <https://doi.org/10.1016/j.conbuildmat.2008.01.006>
176. Durán-Herrera A, Mendoza-Rangel J, De-Los-Santos E, Vazquez P, Bentz D (2013) Accelerated and natural carbonation of concretes with internal curing and shrinkage/viscosity modifiers. *Mater Struct* 48:1207–1214. <https://doi.org/10.1617/s11527-013-0226-y>
177. Harrison TA, Jones MR, Newlands MD, Kandasami S, Khanna G (2012) Experience of using the prTS 12390-12 accelerated carbonation test to assess the relative performance of concrete. *Mag Concr Res* 64(8):737–747. <https://doi.org/10.1680/mac.11.00162>
178. Dunster AM (2000) Accelerated carbonation testing of concrete. Ihs Bre Press, Bracknell UK. ISBN 13 9781860814549
179. Neves R, Branco F, de Brito J (2013) Field assessment of the relationship between natural and accelerated concrete carbonation resistance. *Cement Concr Compos* 41:9–15. <https://doi.org/10.1016/j.cemconcomp.2013.04.006>
180. Anstice DJ, Page CL, Page MM (2005) The pore solution phase of carbonated cement pastes. *Cement Concr Res* 35:377–383. <https://doi.org/10.1016/j.cemconres.2004.06.041>
181. Ngala VT, Page CL (1997) Effects of carbonation on pore structure and diffusional properties of hydrated cement

- pastes. *Cement Concr Res* 27(7):995–1007. [https://doi.org/10.1016/S0008-8846\(97\)00102-6](https://doi.org/10.1016/S0008-8846(97)00102-6)
182. Boumaaza M, Turcry P, Huet B, Ait-Mokhtar A (2020) Influence of carbonation on the microstructure and the gas diffusivity of hardened cement pastes. *Constr Build Mater* 253:119227. <https://doi.org/10.1016/j.conbuildmat.2020.119227>
 183. Justness H, Skoceck J, Øsnor TA, Engelsen CJ, Skjølsvold O (2020) Microstructural changes of hydrated cement blended with fly ash upon carbonation. *Cement Concr Res* 137:106192. <https://doi.org/10.1016/j.cemconres.2020.106192>
 184. Berodier E, Scrivener K (2015) Evolution of pore structure in blended systems. *Cement Concr Res* 73:25–35. <https://doi.org/10.1016/j.cemconres.2015.02.025>
 185. Kulakowski M, Pereira F, Dal Molin D (2009) Carbonation-induced reinforcement corrosion in silica fume concrete. *Constr Build Mater* 23(3):1189–1195. <https://doi.org/10.1016/j.conbuildmat.2008.08.005>
 186. Moreira AC, Appoloni CR, Rocha WRD, Oliveira LF, Fernandes CP, Lopes RT (2010) Determination of the porosity and pore size distribution of SiC ceramic foams by nuclear methodologies. *Adv Appl Ceram* 109(7):416–420. <https://doi.org/10.1179/174367510x12722693956158>
 187. Houst Y, Wittmann F (1994) Influence of porosity and water content on the diffusivity of CO₂ and O₂ through hydrated cement paste. *Cement Concr Res* 24(6):1165–1176. [https://doi.org/10.1016/0008-8846\(94\)90040-X](https://doi.org/10.1016/0008-8846(94)90040-X)
 188. Hyvert N (2009) Application de l'approche probabiliste à la durabilité des produits préfabriqués en béton (in French). Dissertation, University of Toulouse
 189. Dutzer V, Dridi W, Poyet S, Le Bescop P, Bourbon X (2019) The link between gas diffusion and carbonation in hardened cement pastes. *Cement Concr Res* 123(9):105795. <https://doi.org/10.1016/j.cemconres.2019.105795>
 190. Soja W, Maraghechi H, Georget F, Scrivener K (2018) Changes of microstructure and diffusivity in blended cement pastes to natural carbonation. In: 5th International Conference on Concrete Repair, Rehabilitation, and Retrofitting (ICCRRR 2018), Cape Town, South Africa
 191. Boumaaza M, Huet B, Pham G, Ait-Mokhtar A, Gehlen C (2018) A new test method to determine the gaseous oxygen diffusion coefficient of cement pastes as a function of hydration duration, microstructure and relative humidity. *Mater Struct* 51:51. <https://doi.org/10.1617/s11527-018-1178-z>
 192. Zeebe R (2011) On the molecular diffusion of dissolved CO₂, HCO₃⁻ and CO₃²⁻ and their dependence on isotopic mass. *Geochim Cosmochim Acta* 75:2483–2498. <https://doi.org/10.1016/j.gca.2011.02.010>
 193. Olsson N, Nilsson LO, Ahs M, Baroghel-Bouney V (2018) Moisture transport and sorption in cement based materials containing slag or silica fume. *Cement Concr Res* 106:23–32. <https://doi.org/10.1016/j.cemconres.2018.01.018>
 194. Secombe J, Vidal R, Galle C, Adenot F (2006) Experimental study of gas diffusion in cement paste. *Cement Concr Res* 37(4):579–588. <https://doi.org/10.1016/j.cemconres.2006.12.003>
 195. Zou D, Liu T, Du C, Teng J (2015) Influence of wind pressure on the carbonation of concrete. *Materials* 8:4652–4667. <https://doi.org/10.3390/ma8084652>
 196. Villain G, Thiery M (2005) Impact of carbonation on microstructure and transport properties of concrete. In: 10th International conference on durability of building materials and components, pp 17–20 2005, Lyon France
 197. Dinku A, Reinhardt HW (1997) Gas permeability coefficient of cover concrete as a performance control. *Mater Struct* 30:387–393. <https://doi.org/10.1007/BF02498560>
 198. Amsler D, Bur M (2018) Einfluss der Kapillaren Wasseraufnahme auf die Karbonatisierung von Beton. CAS Arbeit der Fachhochschule Nordwestschweiz, Switzerland
 199. Pham S, Prince W (2013) Effects of carbonation on the microstructure and macro physical properties of cement mortars. *World Acad Sci Technol Int J Civil Environ Eng* 7(6):434–437
 200. Juhart J, Bregar R, David G, Krüger M (2019) Air permeability, water penetration and water absorption to specify durability of eco-efficient concrete. *RILEM Tech Lett* 4:67–73. <https://doi.org/10.21809/rilemtechlett.2019.86>
 201. Claisse P, Elsayad H, Shaaban I (1999) Permeability and pore volume of carbonated concrete. *Mater J* 96(3):378–381
 202. Tracz T, Zdeb T (2019) Effect of hydration and carbonation progress on the porosity and permeability of cement pastes. *Materials*. <https://doi.org/10.3390/ma12010192>
 203. Claisse PA, Elsayad HI, Ganjian E (2009) Water vapour and liquid permeability measurements in cementitious samples. *Adv Cement Res* 21(2):83–89. <https://doi.org/10.1680/adcr.8.00046>
 204. Dias WPS (2000) Reduction of concrete sorptivity with age through carbonation. *Cement Concr Res* 30(8):1255–1261. [https://doi.org/10.1016/S0008-8846\(00\)00311-2](https://doi.org/10.1016/S0008-8846(00)00311-2)
 205. Zhang SP, Zong I (2014) Evaluation of relationship between water absorption and durability of concrete materials. *Adv Mater Sci Eng*. <https://doi.org/10.1155/2014/650373>
 206. Zhang Z, Thierry M, Baroghel-Bouney V (2016) Investigation of moisture transport properties of cementitious materials. *Cement Concr Res*. <https://doi.org/10.1016/j.cemconres.2016.08.013>
 207. Alderete N, Villagran Zaccardi Y, Snoeck D, Van Bellegem B, Van den Heede P, Van Tittelboom K, De Belie N (2019) Capillary imbibition in mortars with natural pozzolan, limestone powder and slag evaluated through neutron radiography, electrical conductivity, and gravimetric analysis. *Cement Concr Res* 118:57–68. <https://doi.org/10.1016/j.cemconres.2019.02.011>
 208. Edvardsen C (1999) Water permeability and autogenous healing of cracks in concrete. *ACI Mater J* 96(4):448–454
 209. Hall C (2019) Capillary imbibition in cement-based materials with time-dependent permeability. *Cement Concr Res* 124:105835. <https://doi.org/10.1016/j.cemconres.2019.105835>

Publisher's Note Springer Nature remains neutral with regard to jurisdictional claims in published maps and institutional affiliations.

