

JOINING OF THE CONSTRUCTION & THE FACADES COMPONENTS - 1:5

.....UPPER FOLDING WALL DETAIL - 1:5

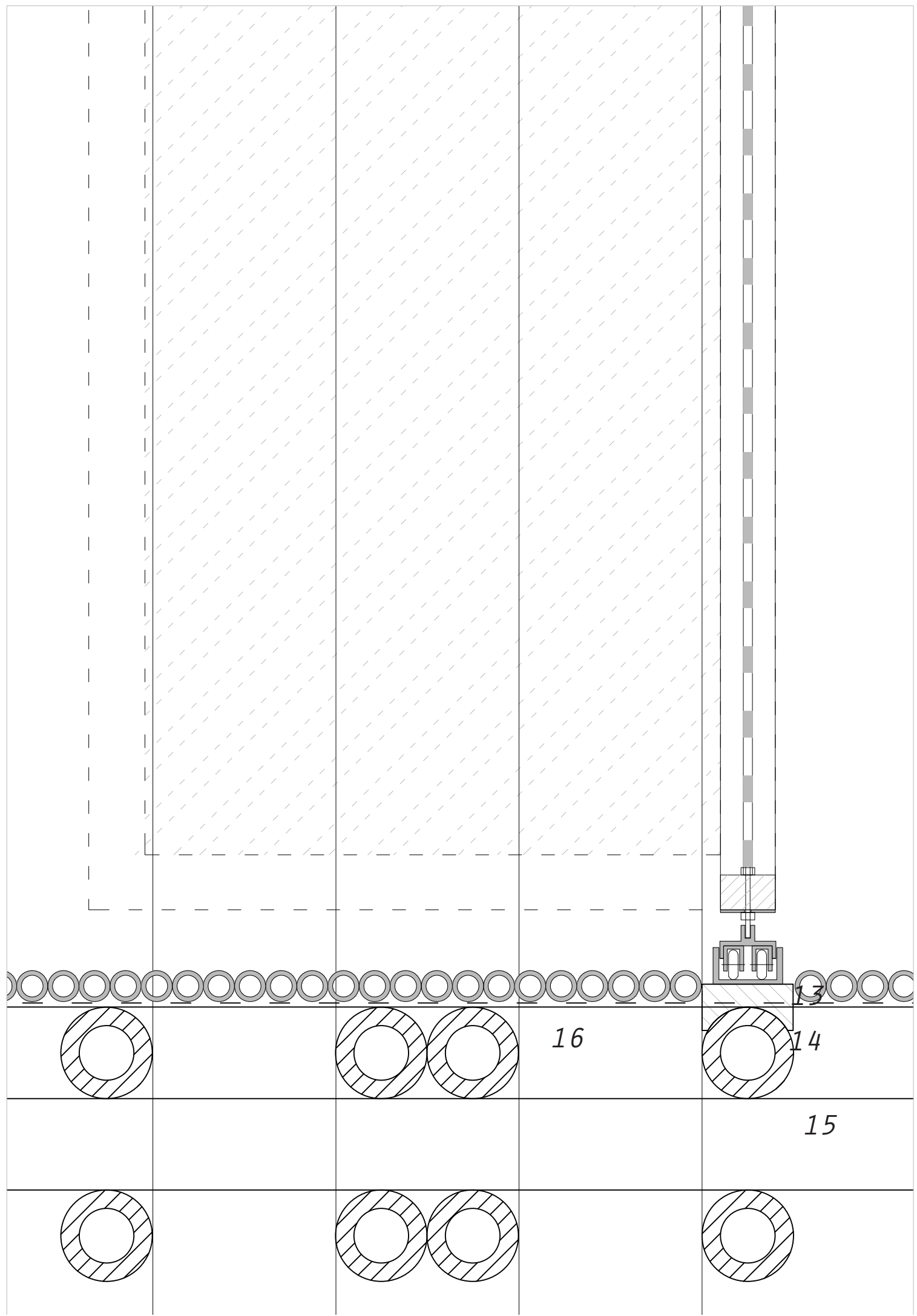
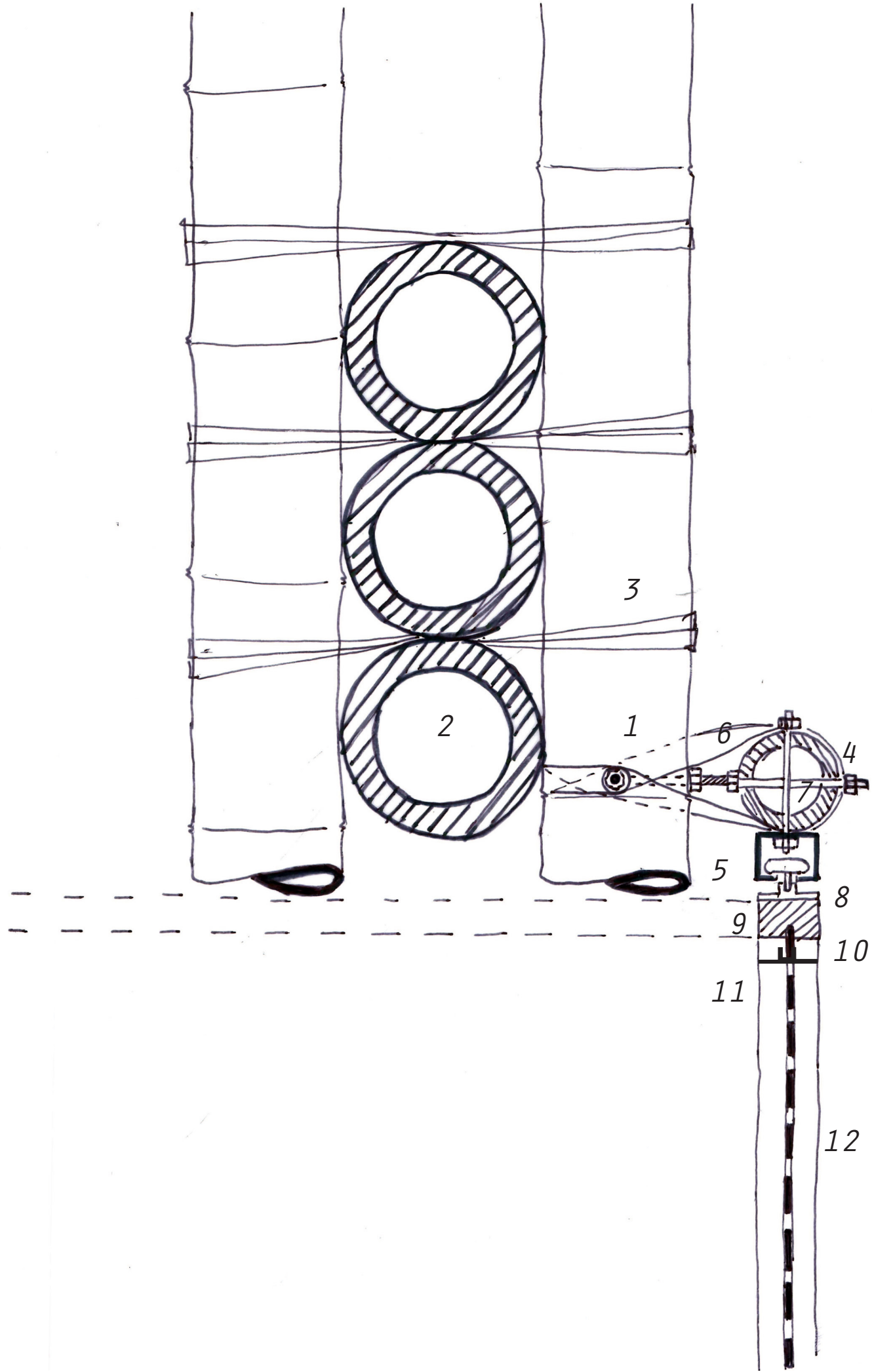
.....LOWER FOLDING WALL DETAIL - 1:5

FOUNDATION DETAIL - 1:5

- 1 BAMBOO COLUMN MADE OUT OF 4 POLES OF Ø 200MM
- 2 BAMBOO BEAM MADE OUT OF 3 POLES OF Ø 150MM
- 3 FLOOR MADE OUT OF THREE LAYERS OF BAMBOO POLES OF Ø 100MM
- 4 IN SITU CONCRETE FOUNDATION
- 5 THREADED END Ø 20MM
- 6 THREADED END Ø 12MM
- 7 WASHER
- 8 SCREW
- 9 RING BOLT
- 10 STEEL FOOT
- 11 TUBULAR STEEL CASE
- 12 COUNTERNUT

FOLDING WALL DETAIL - 1:5

- 1 BAMBOO POLE OF THE TRUSS BEAM Ø 150MM
- 2 BAMBOO BEAM MADE OUT OF 3 POLES OF Ø 200MM
- 3 JOINT MADE OF COCONUT FIBRES STRAPS
- 4 BAMBOO LATTICE OF Ø 100MM
- 5 DISTANCE HOLDER SCREW THREAD Ø 9MM
- 6 JOINT KNOT ROPE BETWEEN TRUSS AND LATTICE
- 7 THREAD AND SCREW JOINT BETWEEN LATTICE AND UPPER RAIL CASE
- 8 STEEL RAIL CASE 60*45MM
- 9 WHEEL HORIZONTAL ROTATION AXIS
- 10 STEEL FOOT
- 11 WOODEN DOOR FRAME 60*40MM
- 12 PATTERN OF BAMBOO STROKES
- 13 ROTATING STEEL CASE
- 14 STEEL RAIL SYSTEM
- 15 WOODEN BEAM 100*50MM MOUNTED AND FITTED TO BAMBOO FLOOR
- 16 FLOOR PARKET MADE OUT OF BAMBOO CANES OF Ø 40MM



WINDOW TABLE DETAIL - 1:5

- 1 BAMBOO COLUMN MADE OUT OF 4 POLES OF Ø 200MM
- 2 BAMBOO FACADE LATTICE OF Ø 100MM
- 3 FLOOR MADE OUT OF THREE LAYERS OF BAMBOO POLES OF Ø 100MM
- 4 EXTERNAL WINDOW FRAME MADE OUT OF BAMBOO CANES Ø 100MM
- 5 BAMBOO LATTICE Ø 60MM SUPPORTING THE WINDOW HINGE
- 6 WINDOW TABLE STEEL HINGE
- 7 WINDOW FRAME MADE OUT OF BAMBOO CANE Ø 60MM
- 8 WOODEN WINDOW-TABEL PANNEL
- 9 WOODEN WINDOW PANNEL
- 10 WOODEN LOCK
- 11 STEEL CYLINDRICAL POSITION LOCK
- 12 FACADE FINISHING BAMBOO CANES Ø 40MM
- 13 BAMBOO JOINT DISTANCE HOLDER Ø 40MM
- 14 FLOOR PARKET MADE OUT OF BAMBOO STAVES OF Ø 40MM

.....FOUNDATION DETAIL - 1:5

.....WINDOW TABLE DETAIL - 1:5

