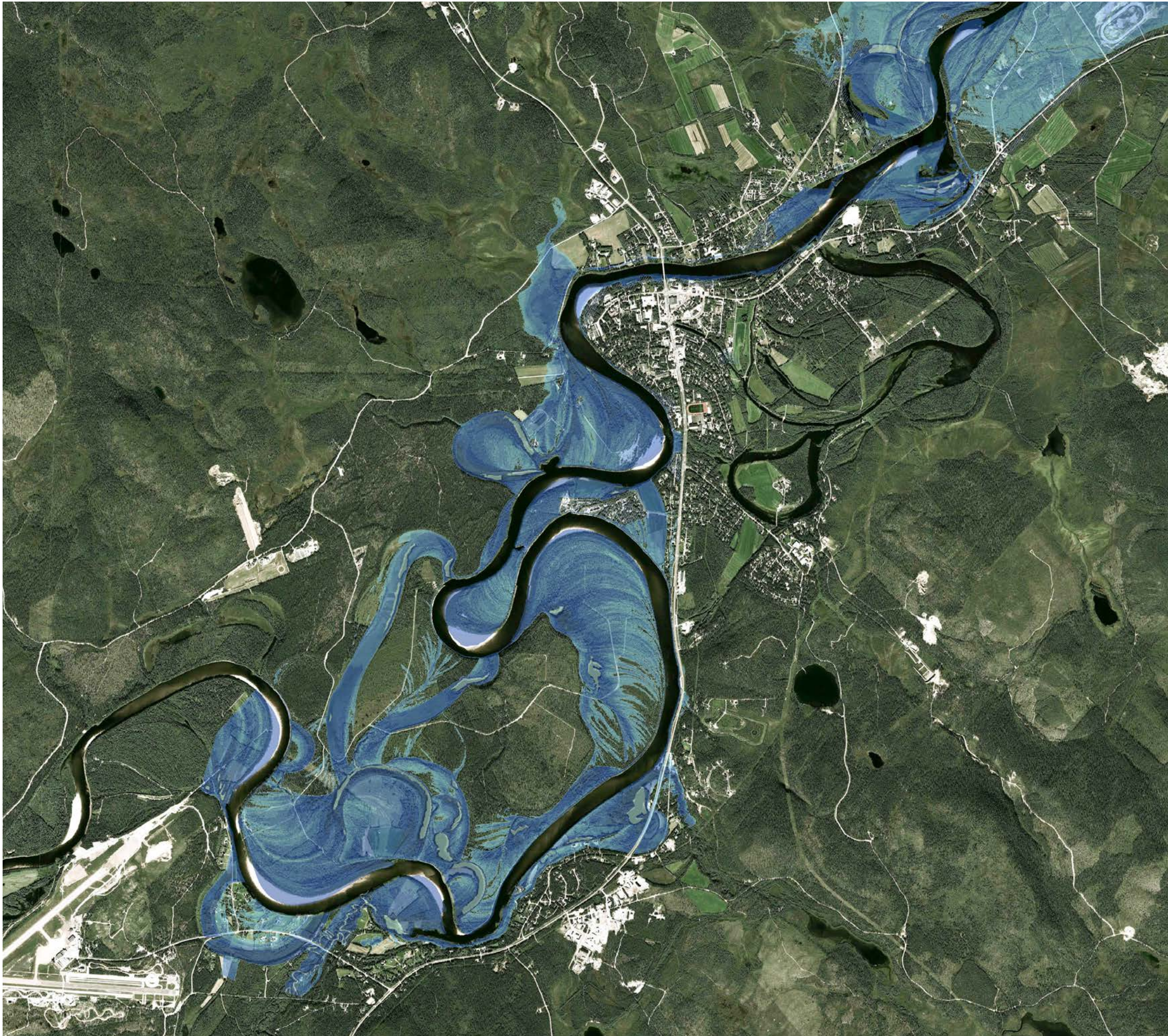
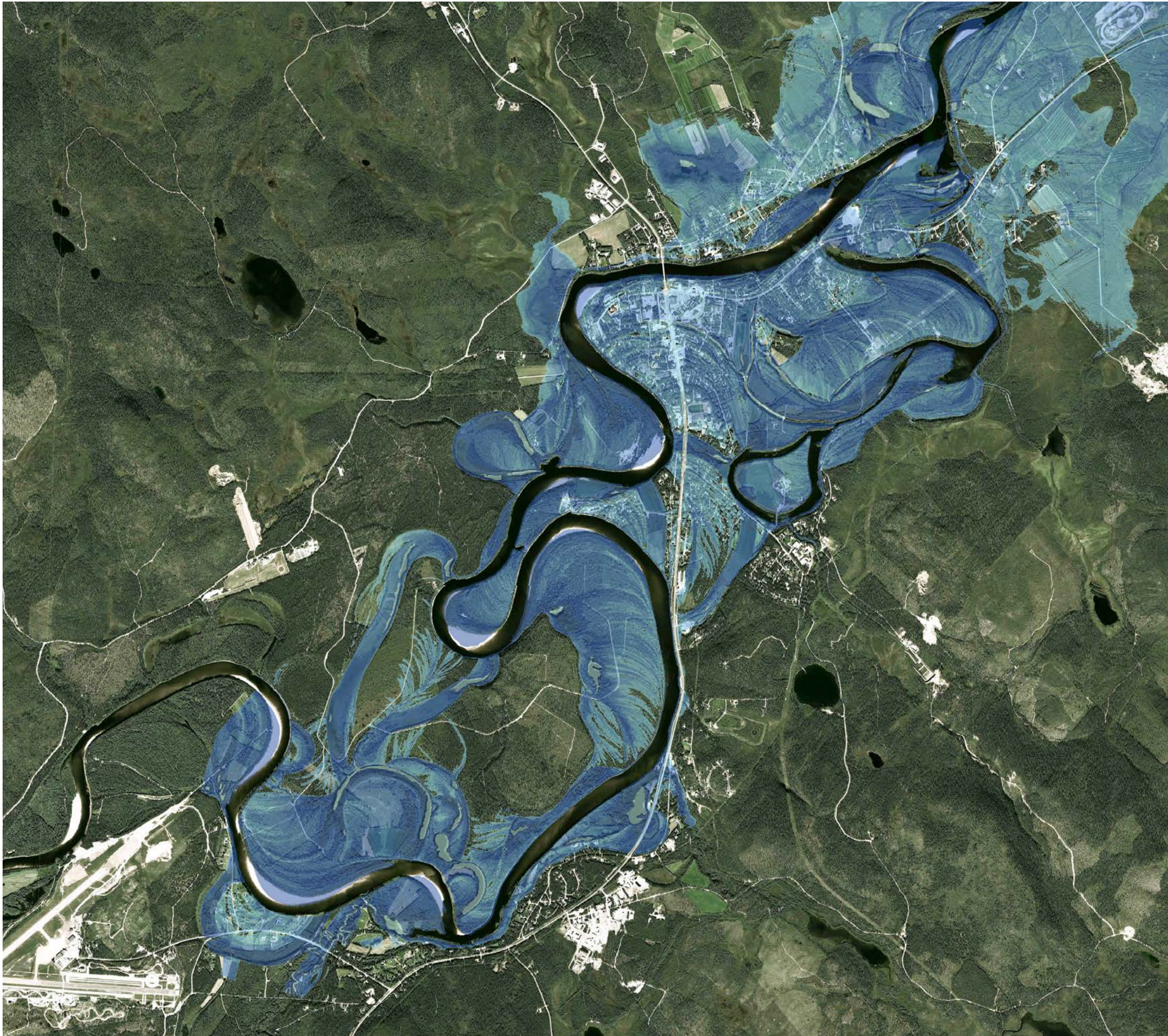


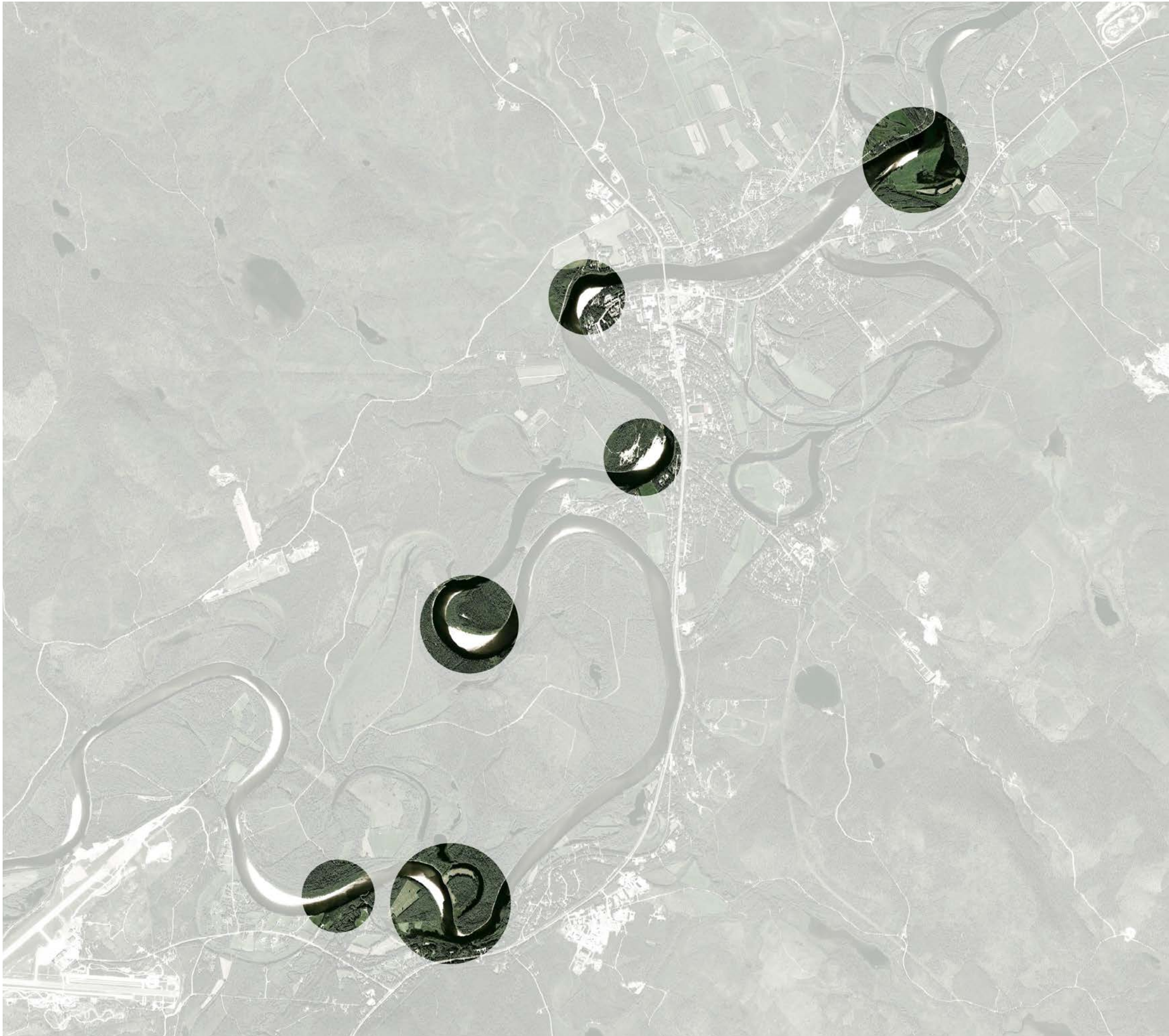
IVALO RIVER SANDBANKS

Architectural Interventions in the dynamic landscape of the Ivalo River
Laura Langridge









Ice Box

Ice storage and event space

Flow

Movement studio and physiotherapy

Spectacle

Temporary summer event pavilion

Embrace

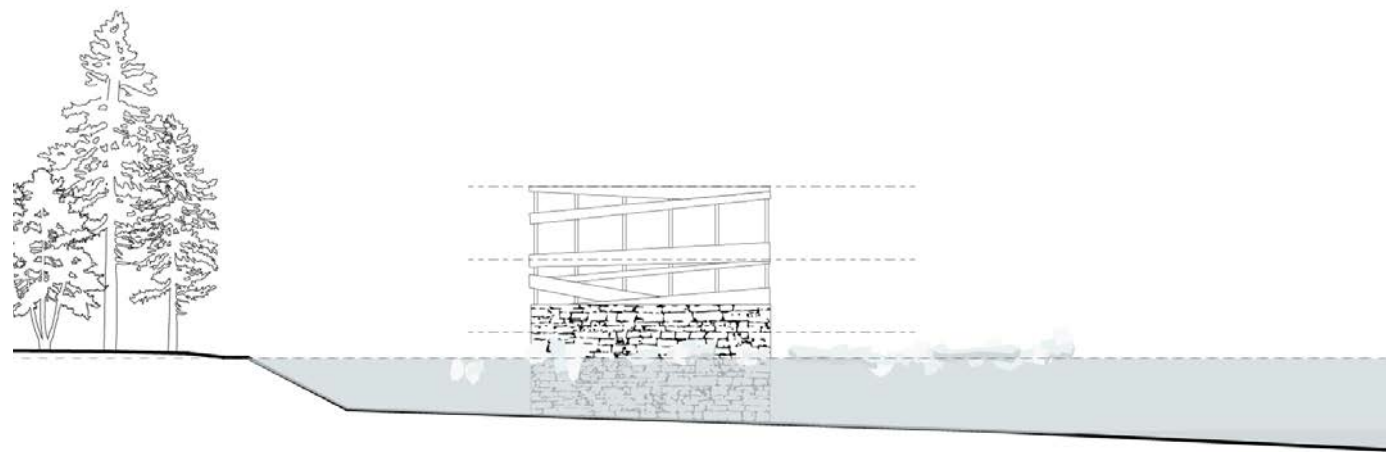
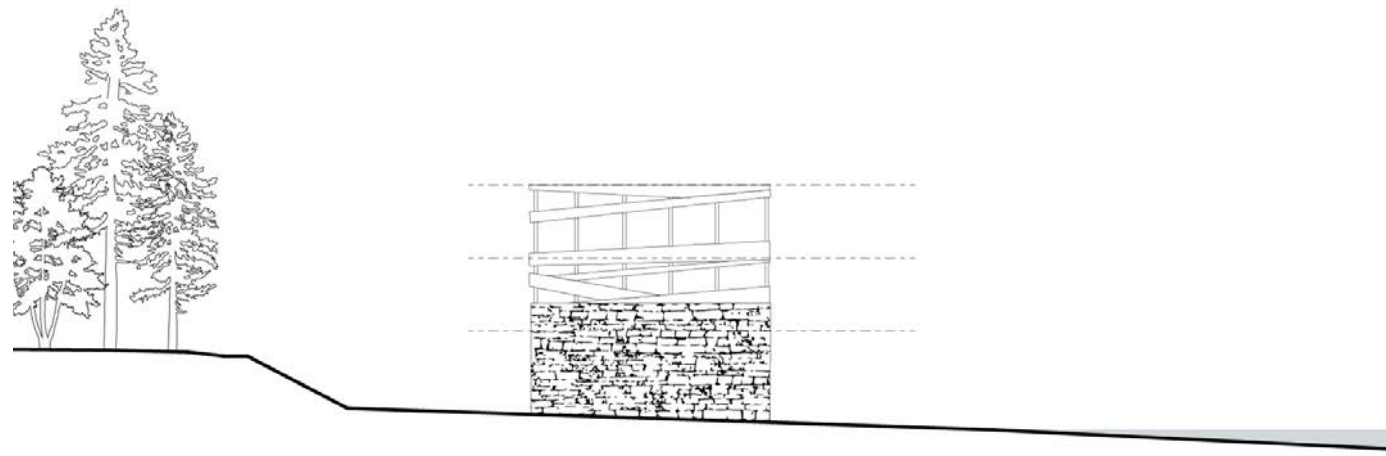
River-edge saunas

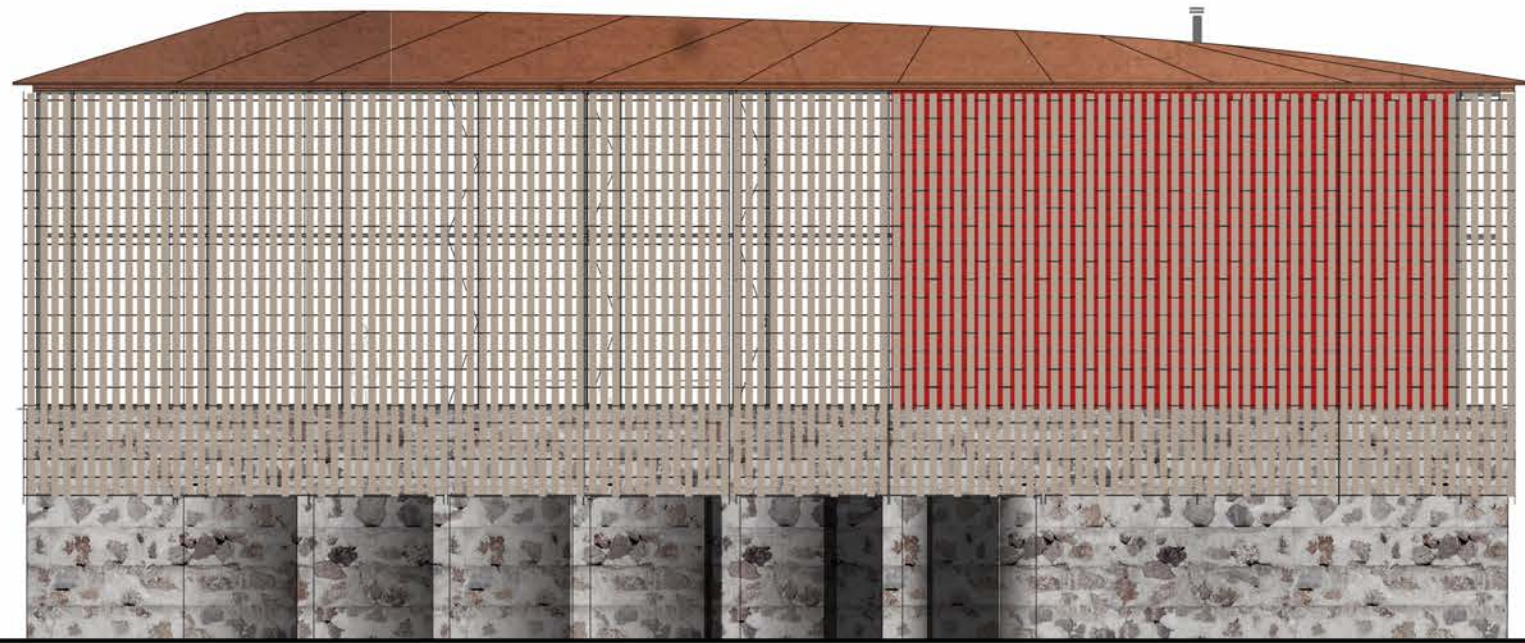
The Shell

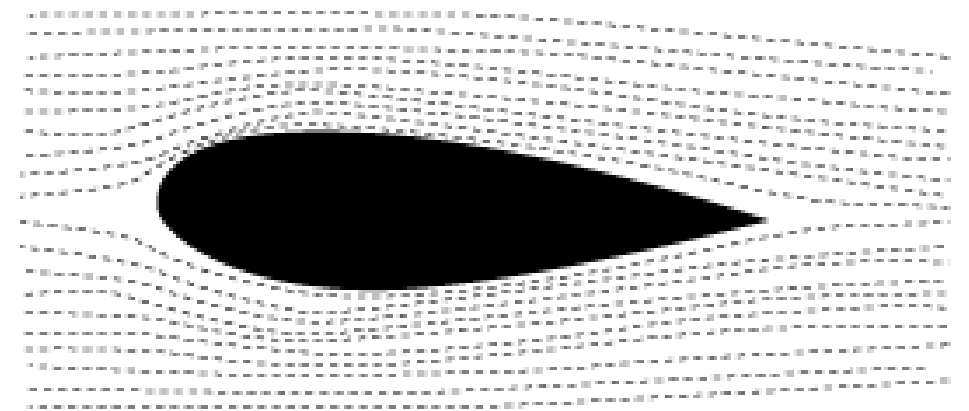
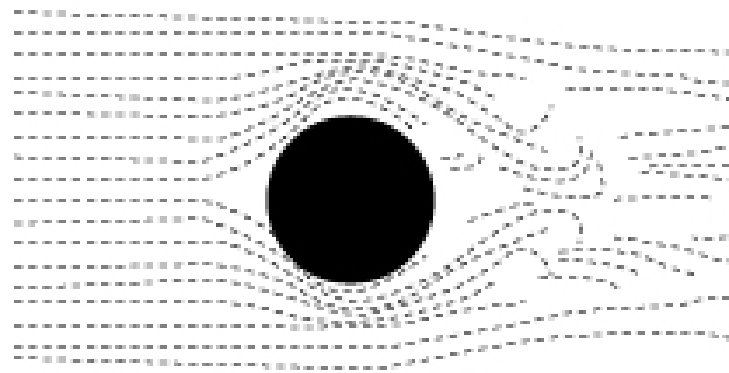
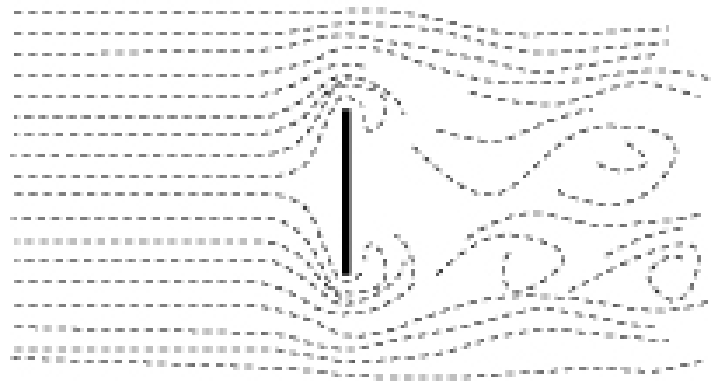
Teaching kitchen and greenhouse

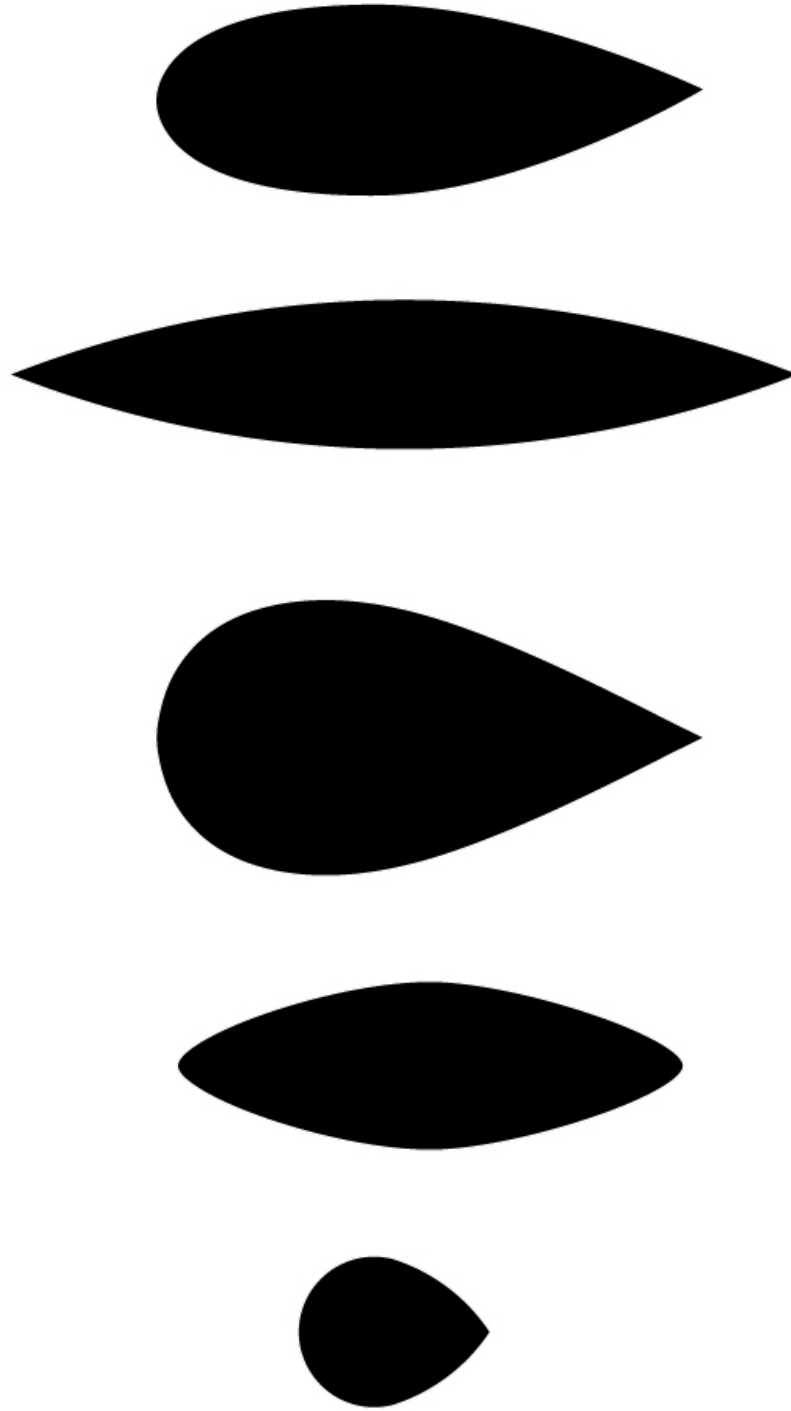
Hide-Away

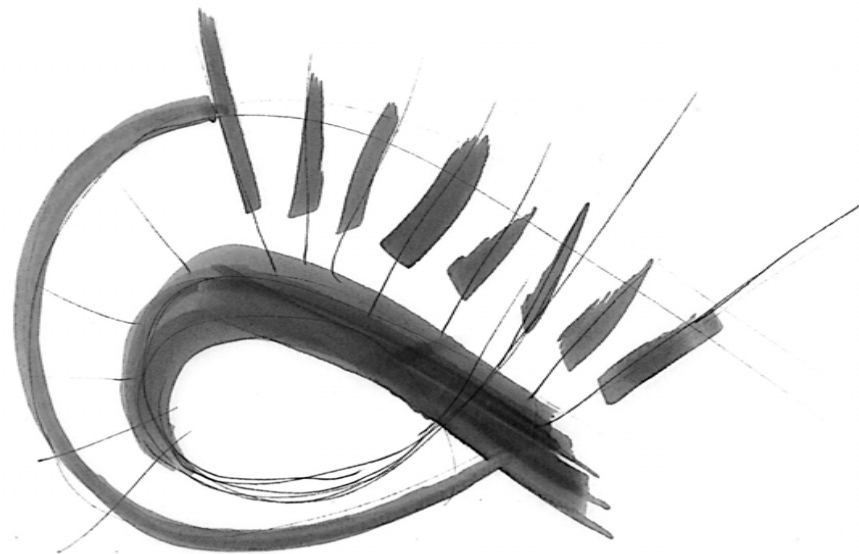
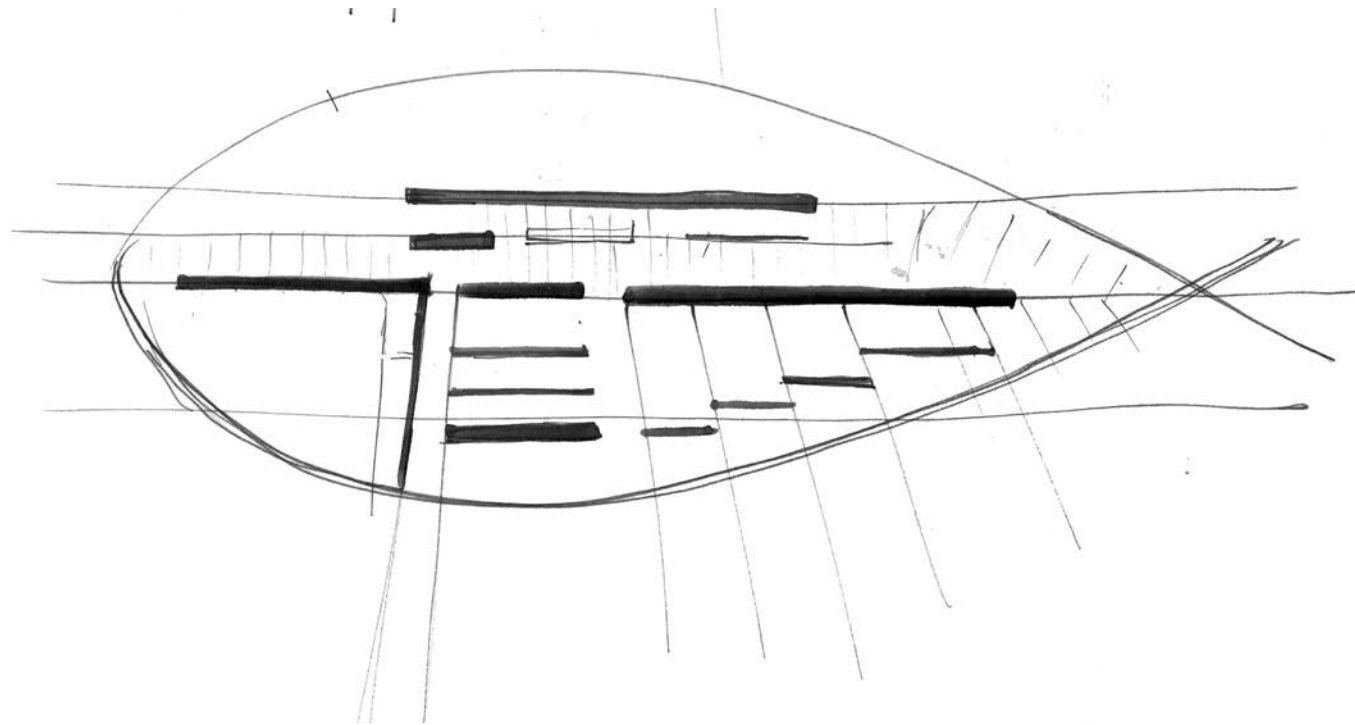
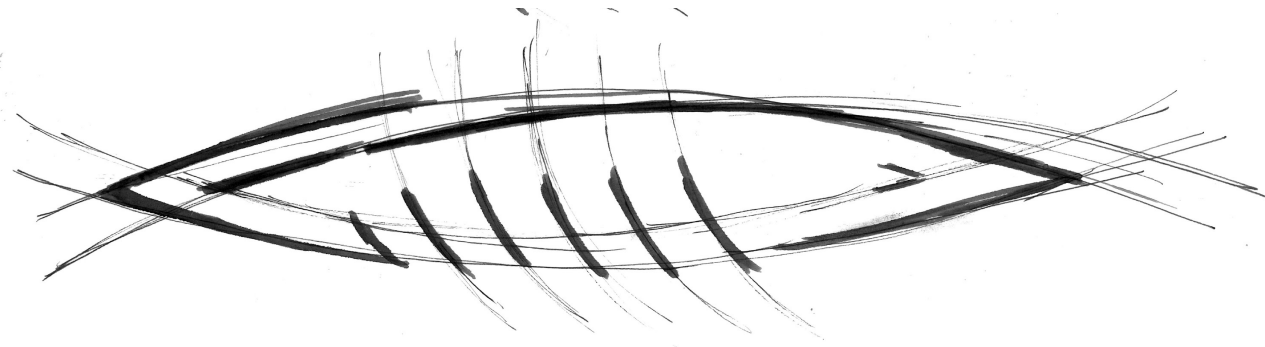
Youth river retreat





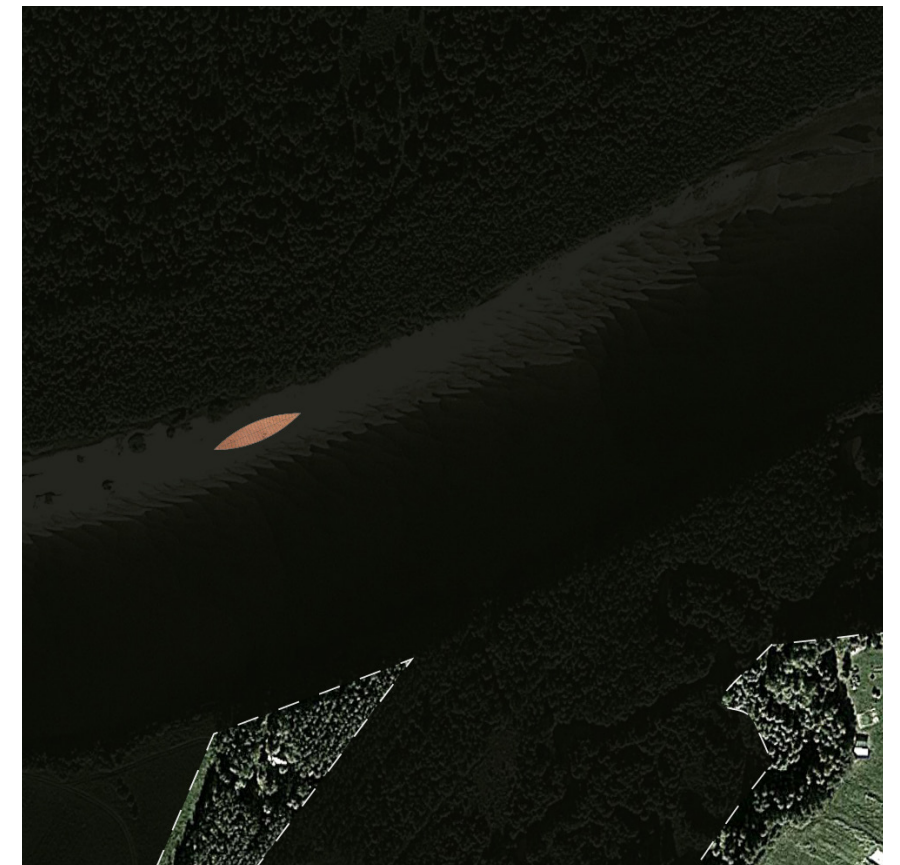


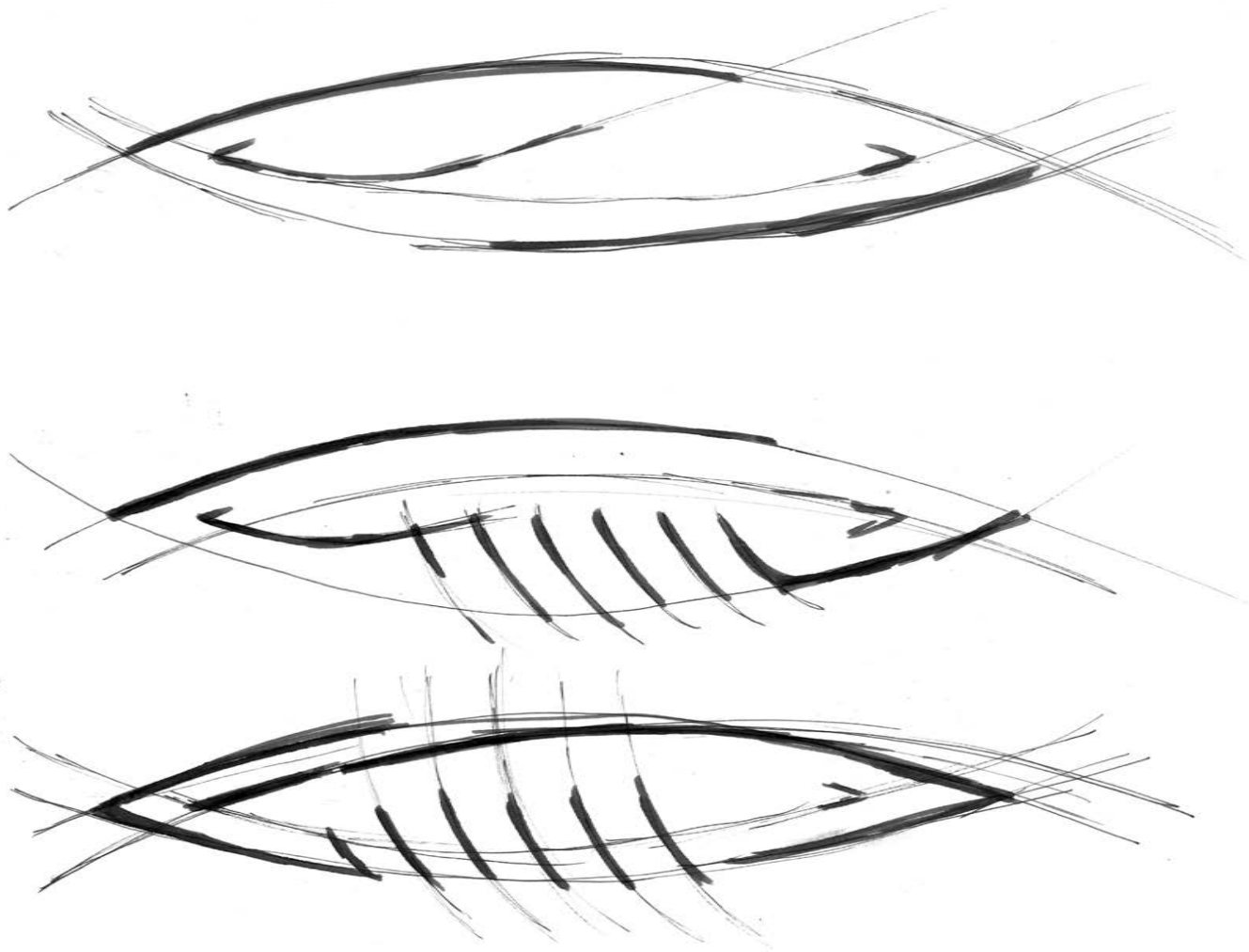


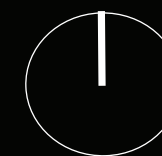
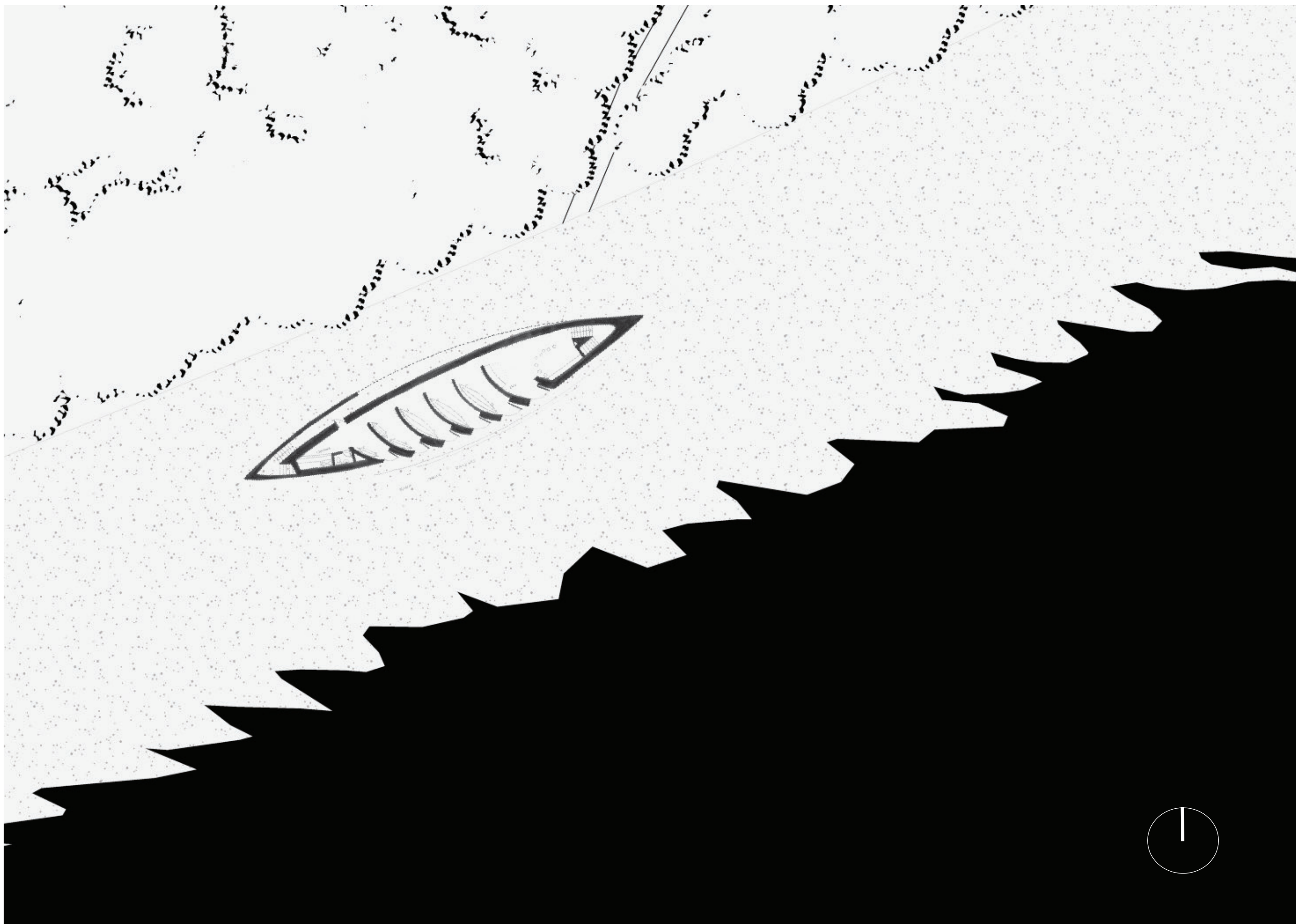


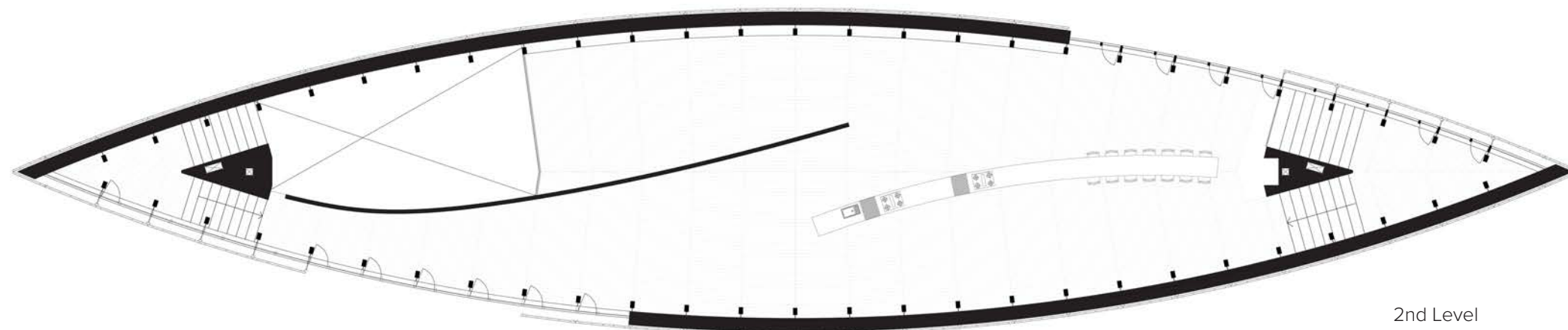
HIDE-AWAY

Upstream from Ivalo a youth river retreat is occupies a narrow stretch of beach.

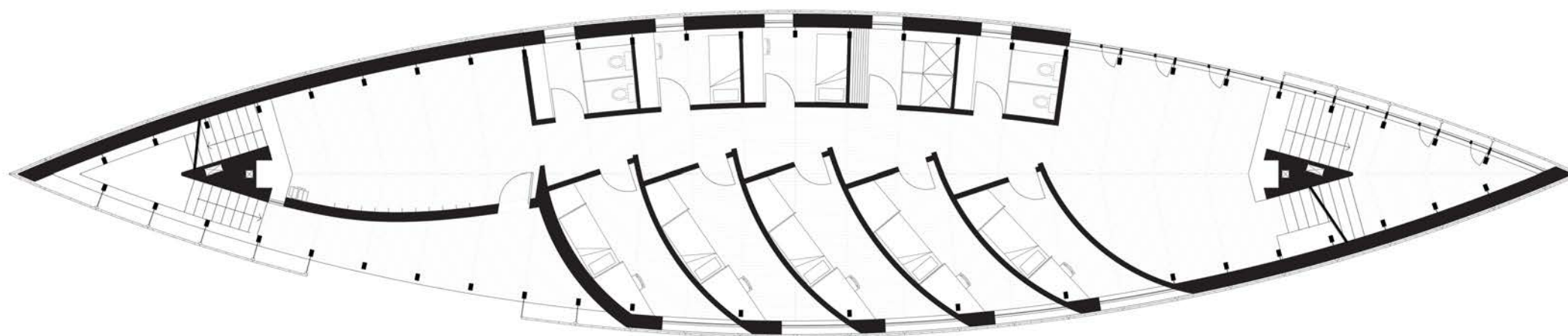




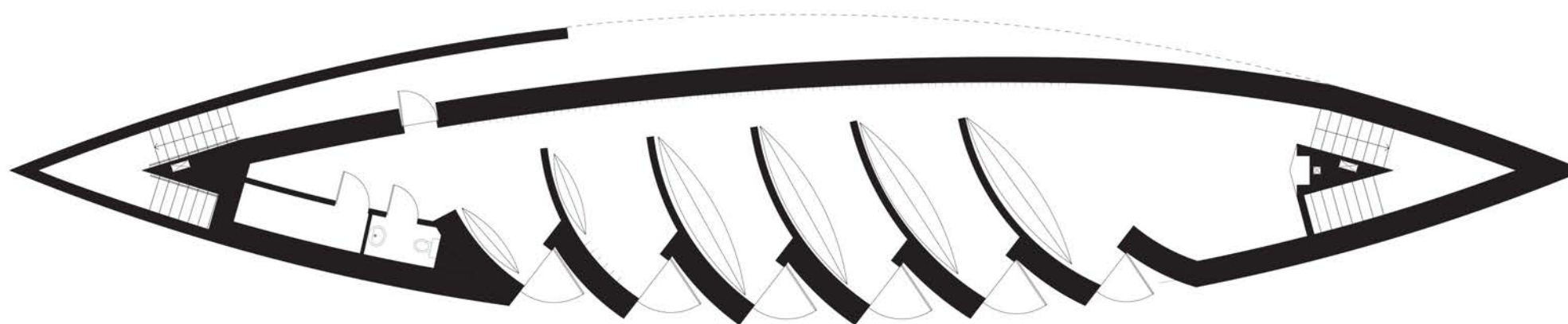




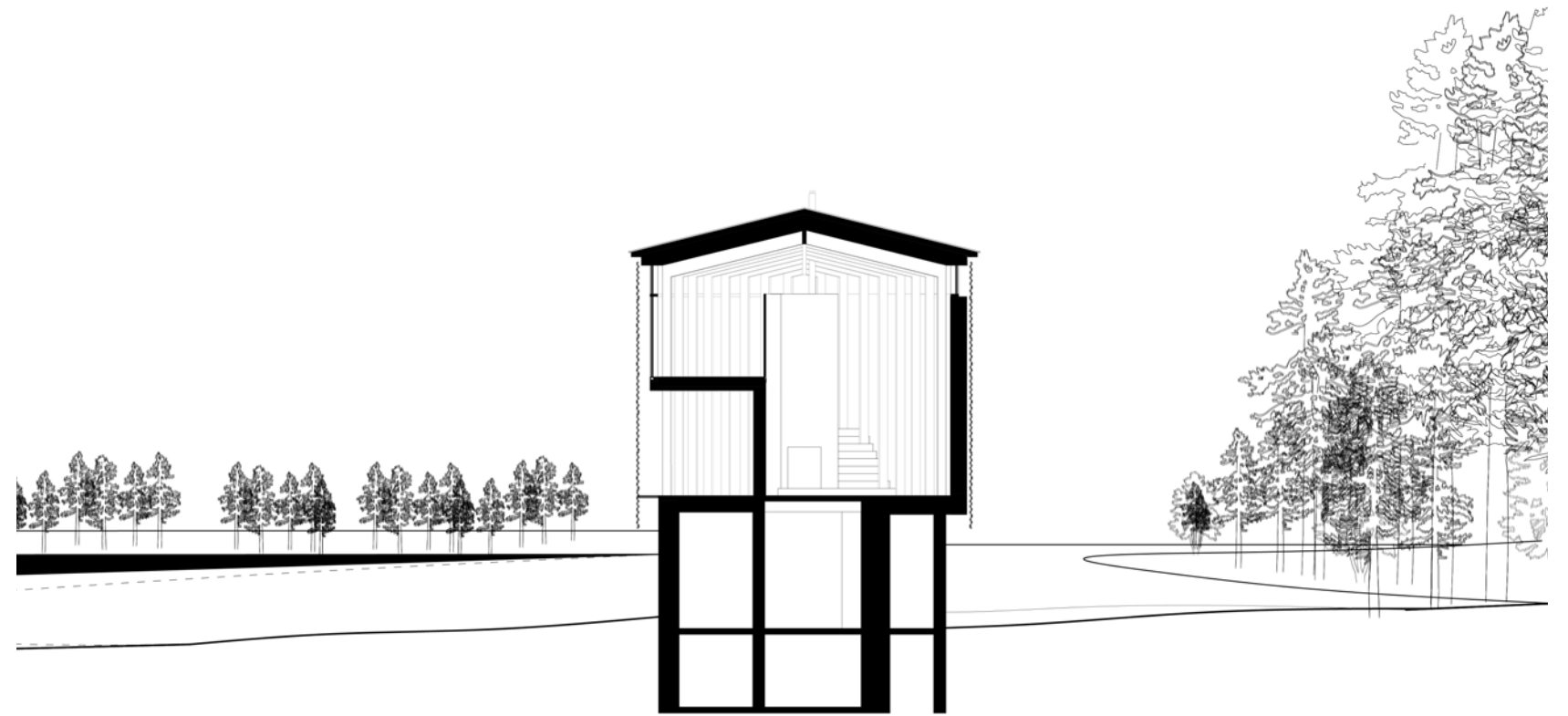
2nd Level

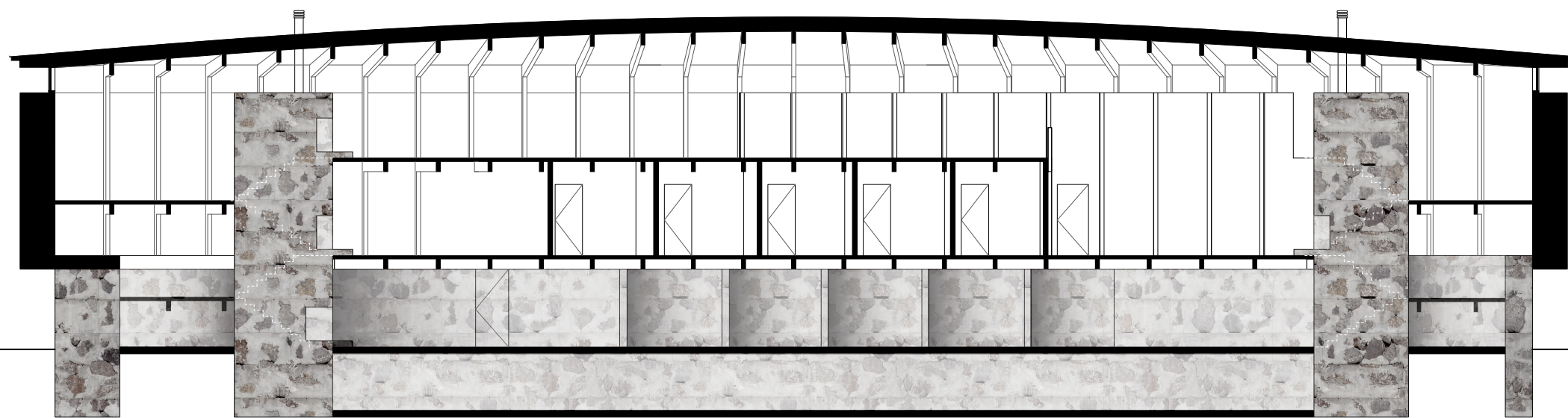


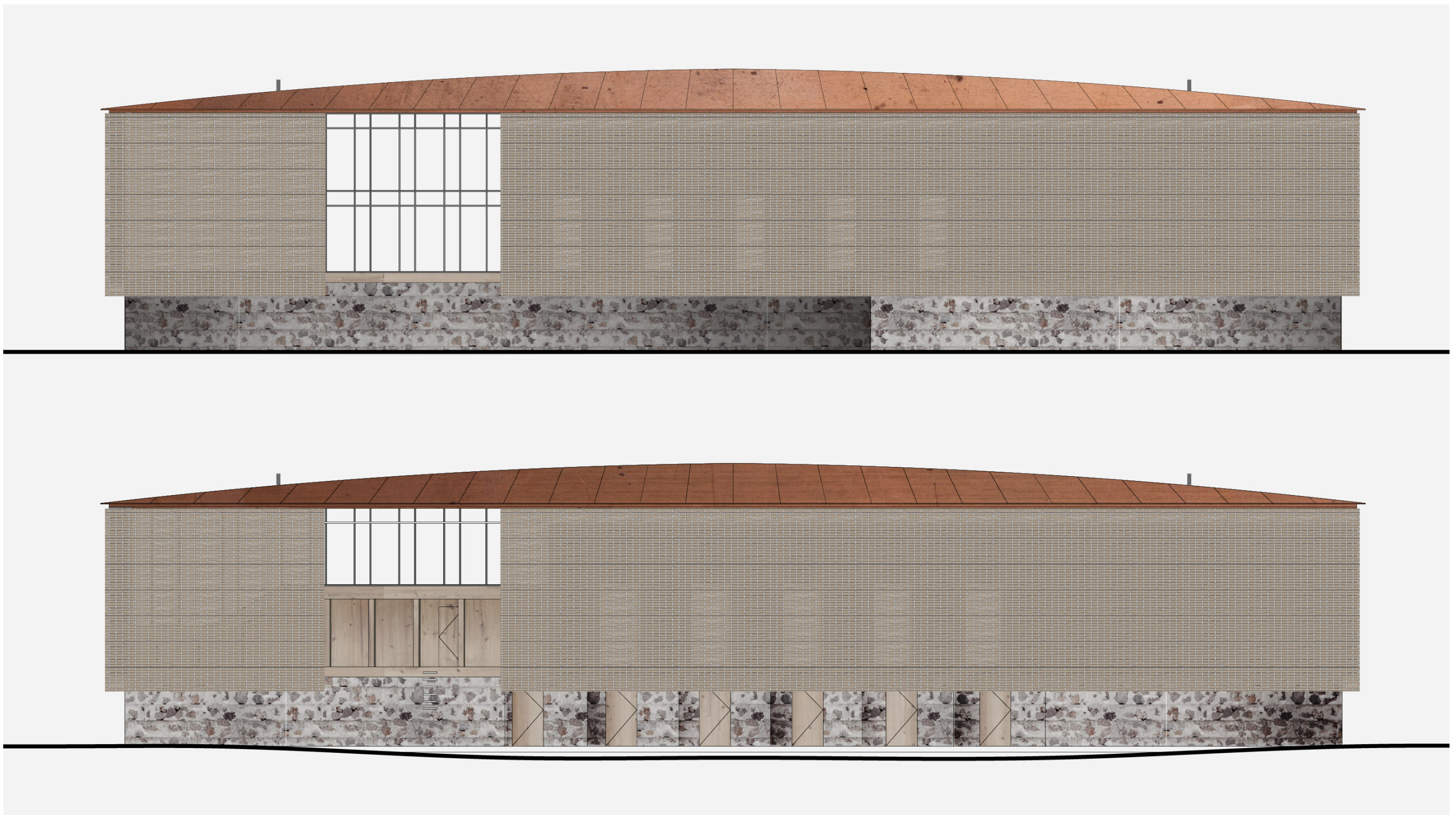
1st Level

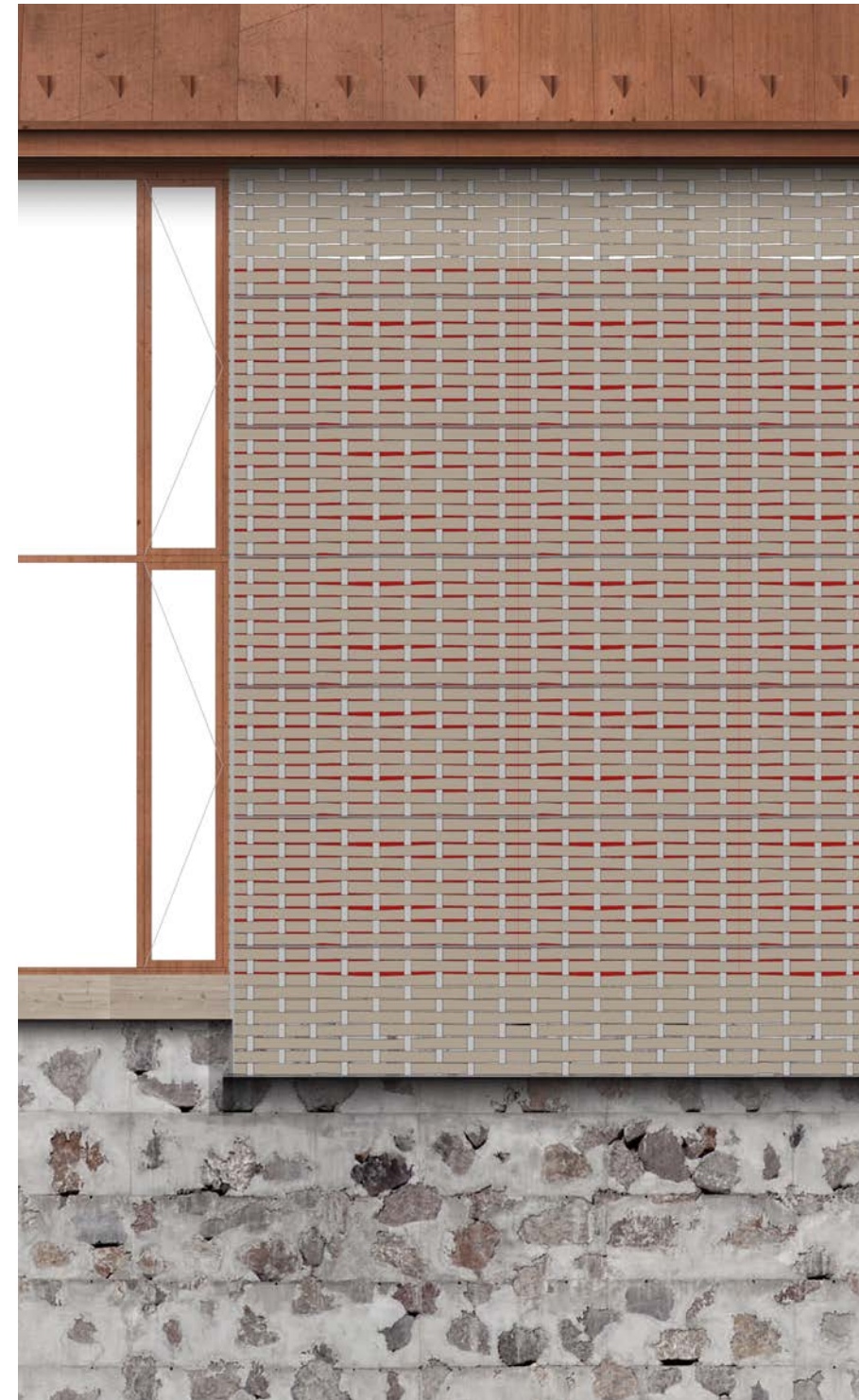
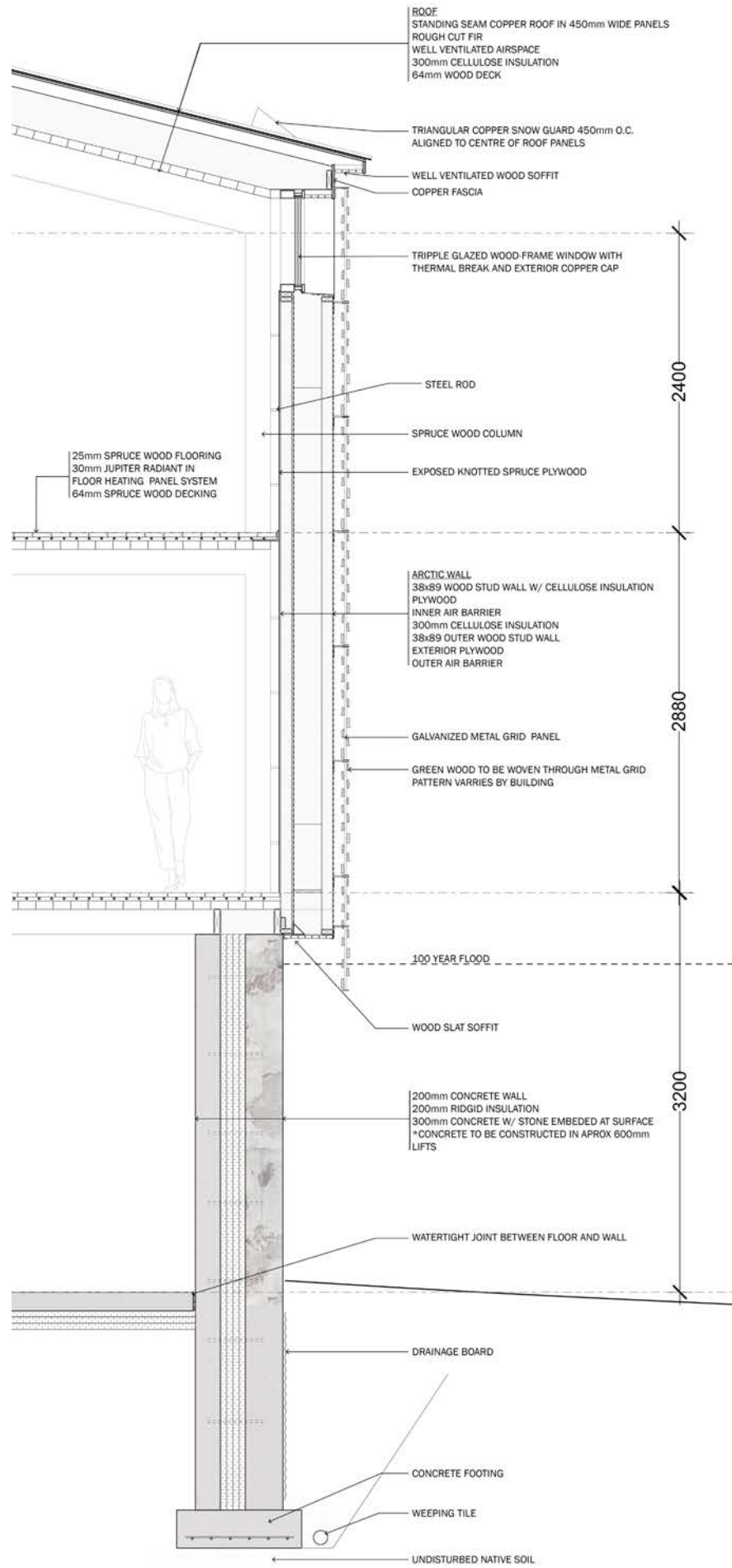


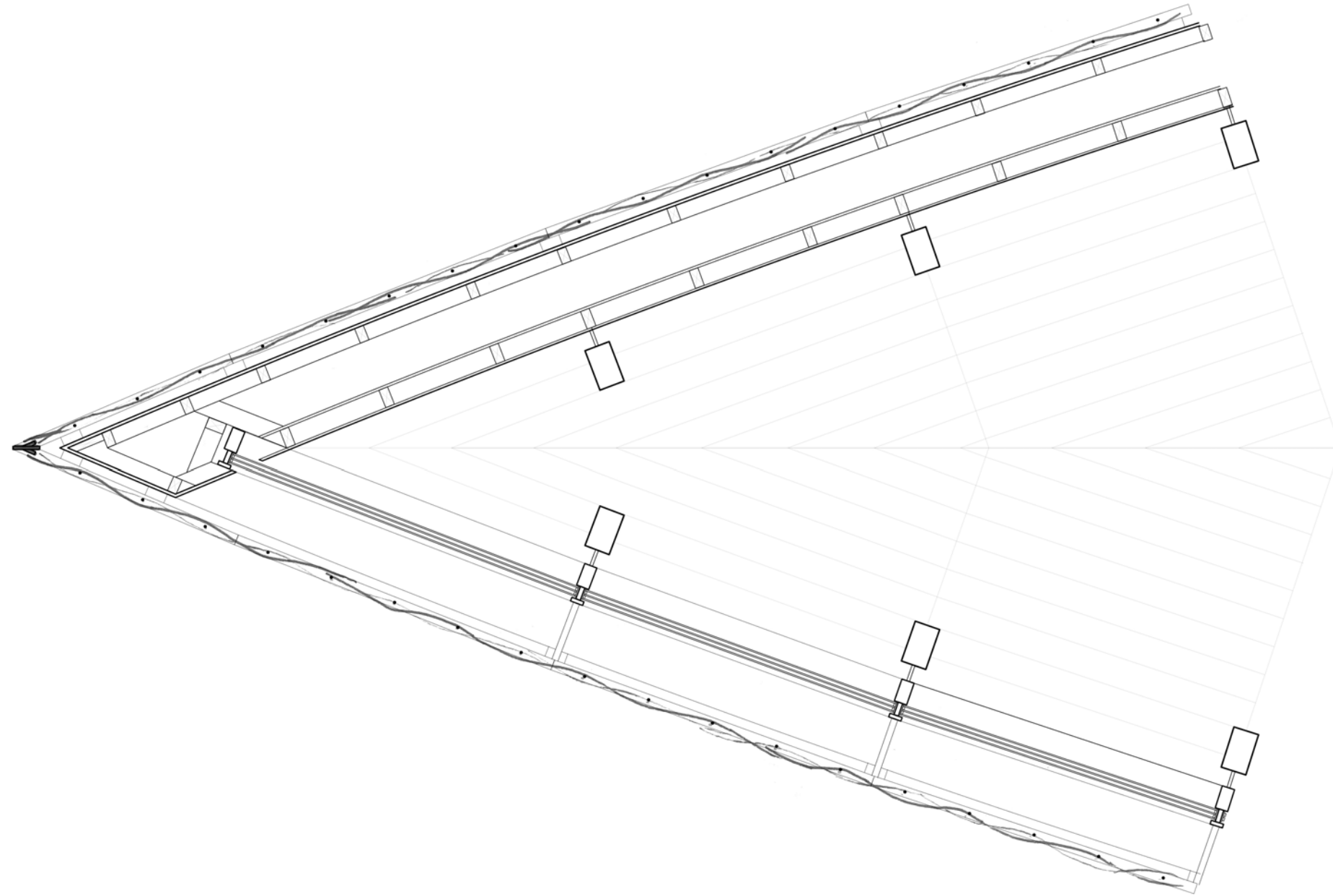
Ground Level

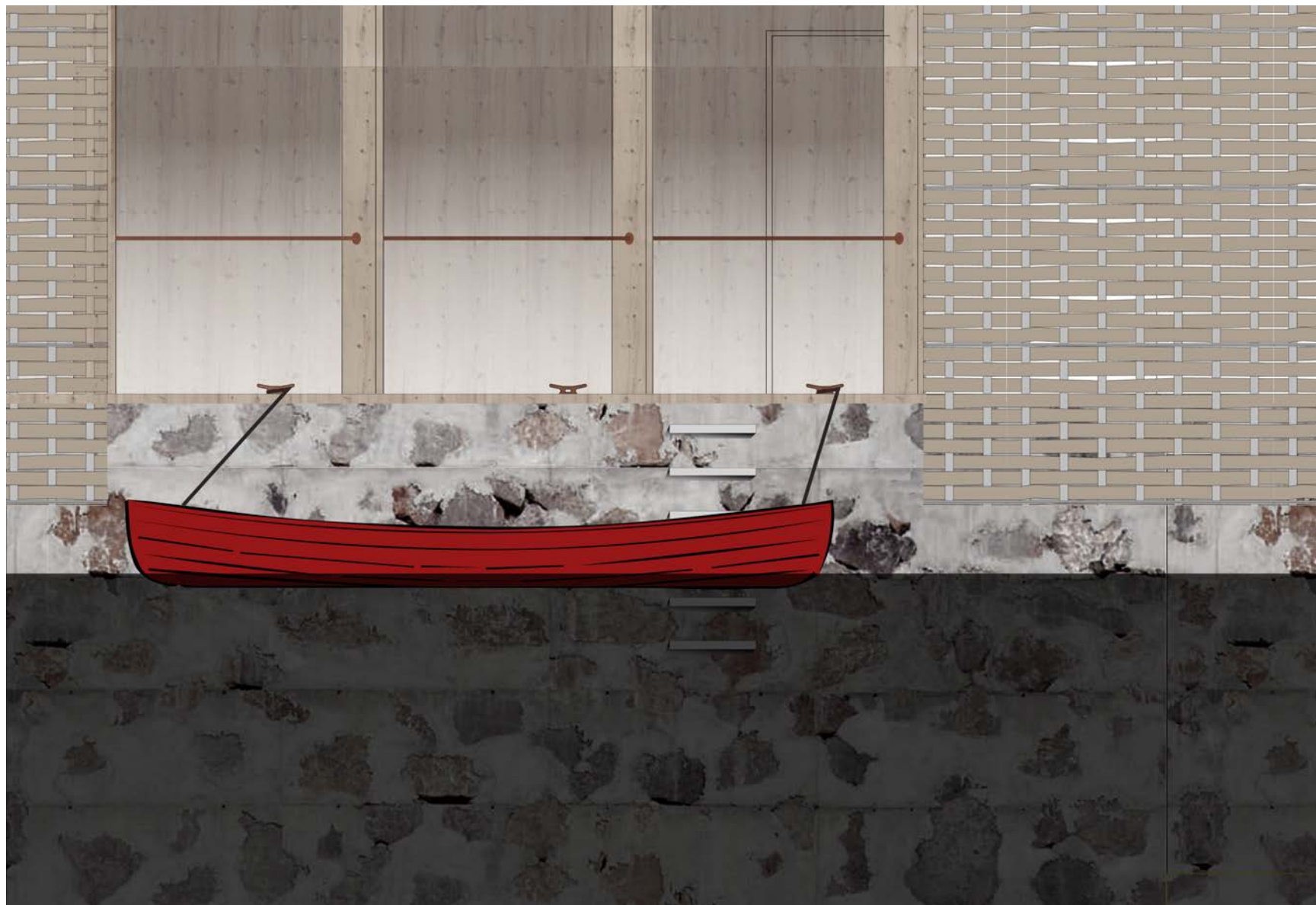








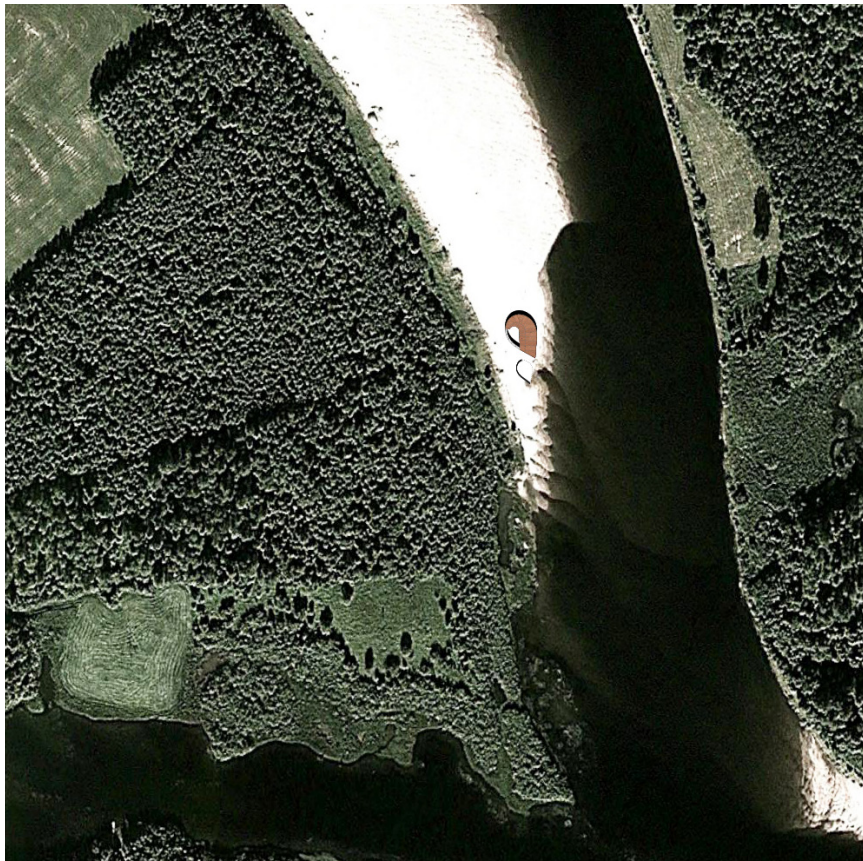


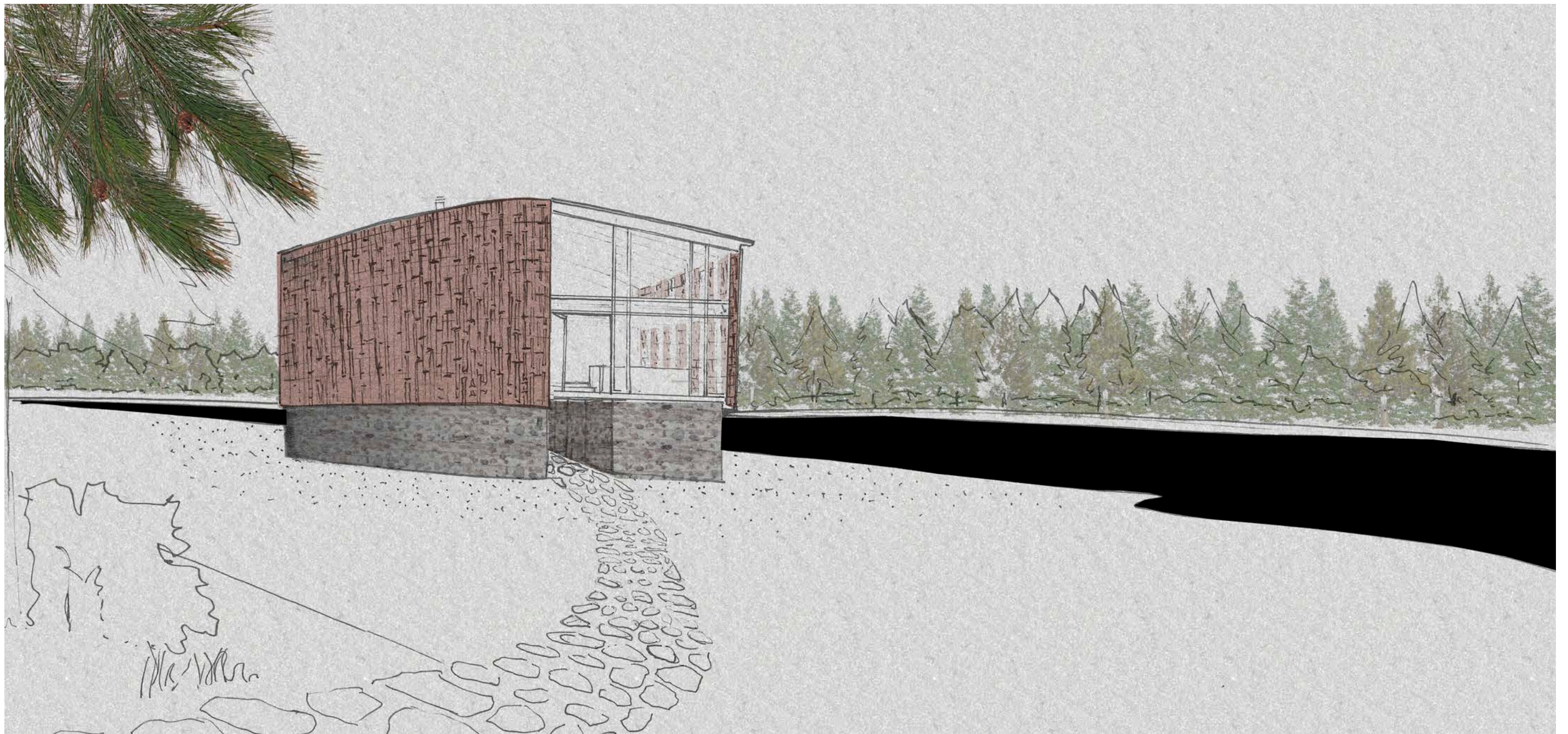


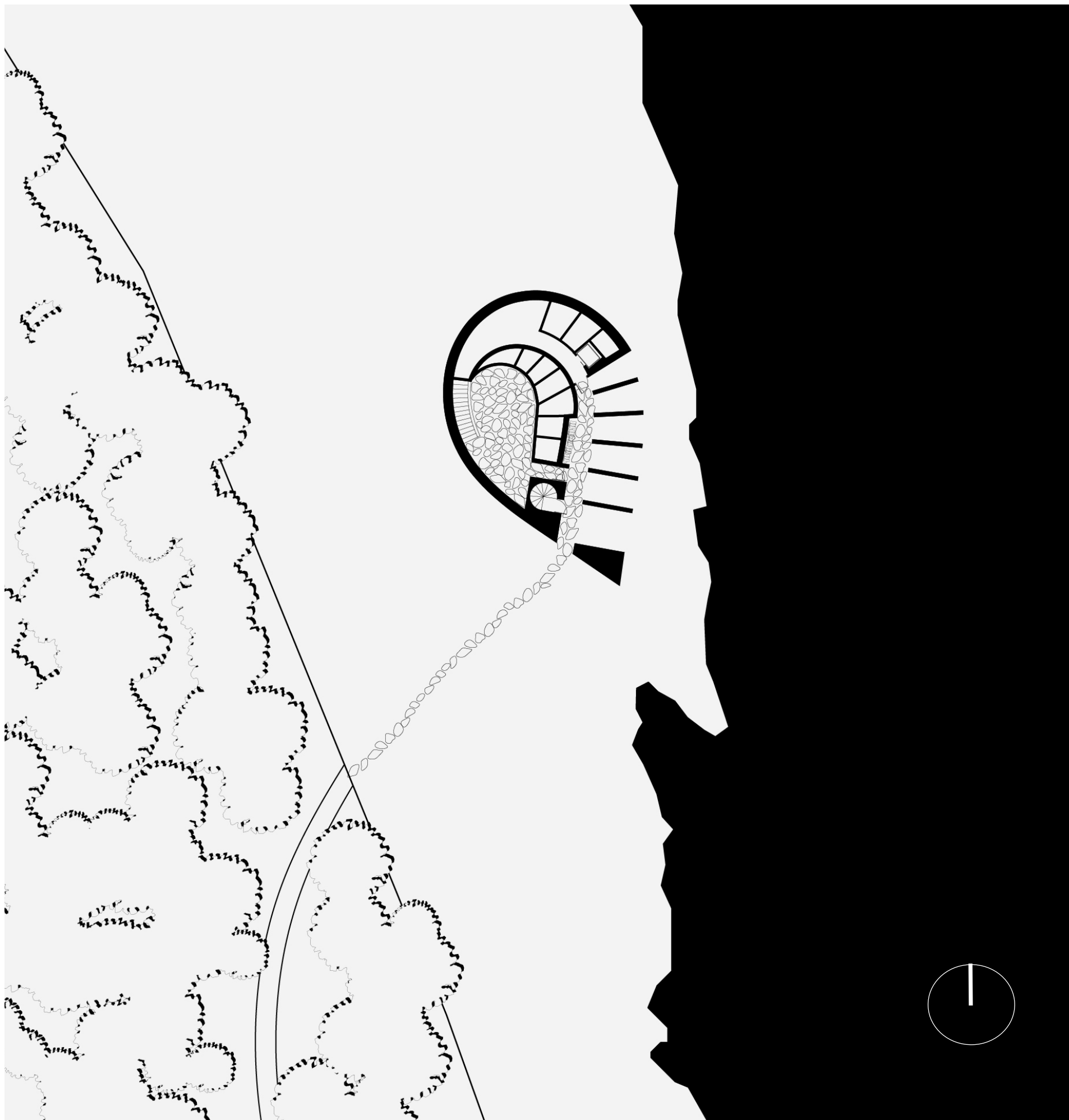


Shell

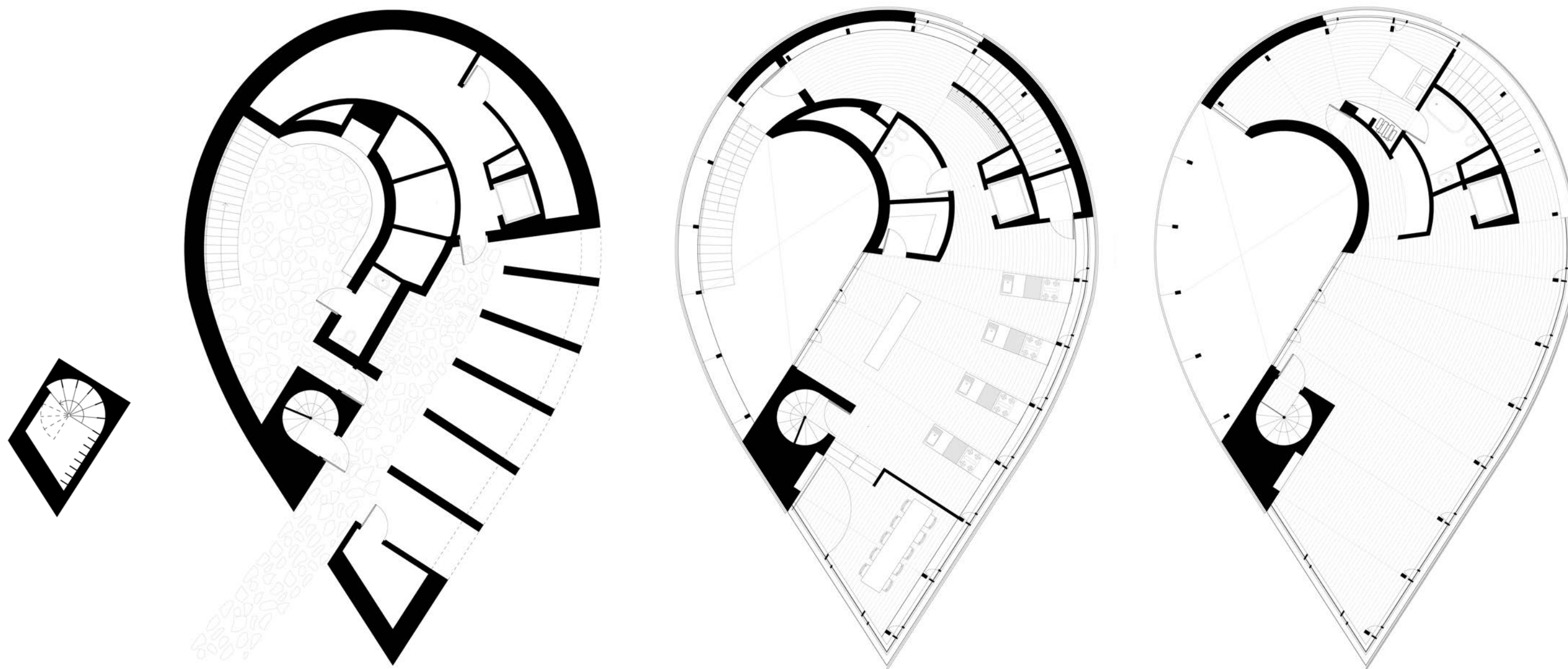
A teaching kitchen and greenhouse





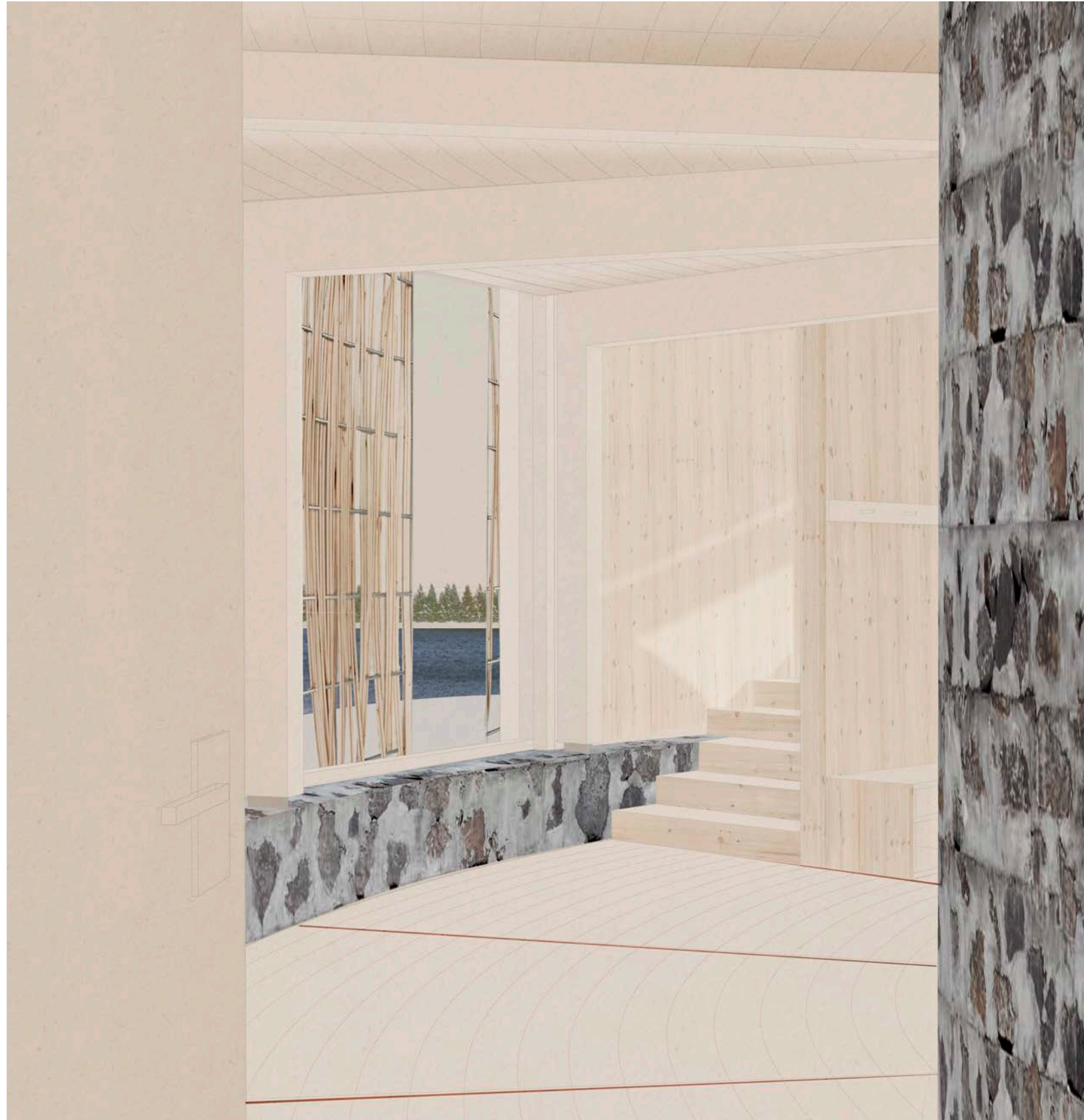








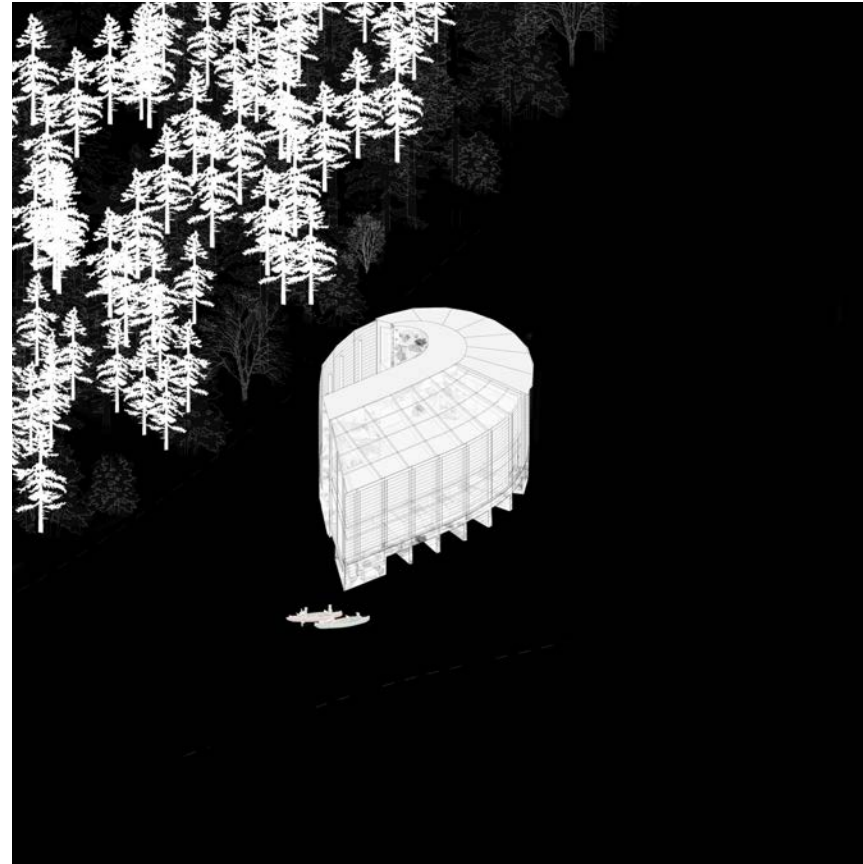




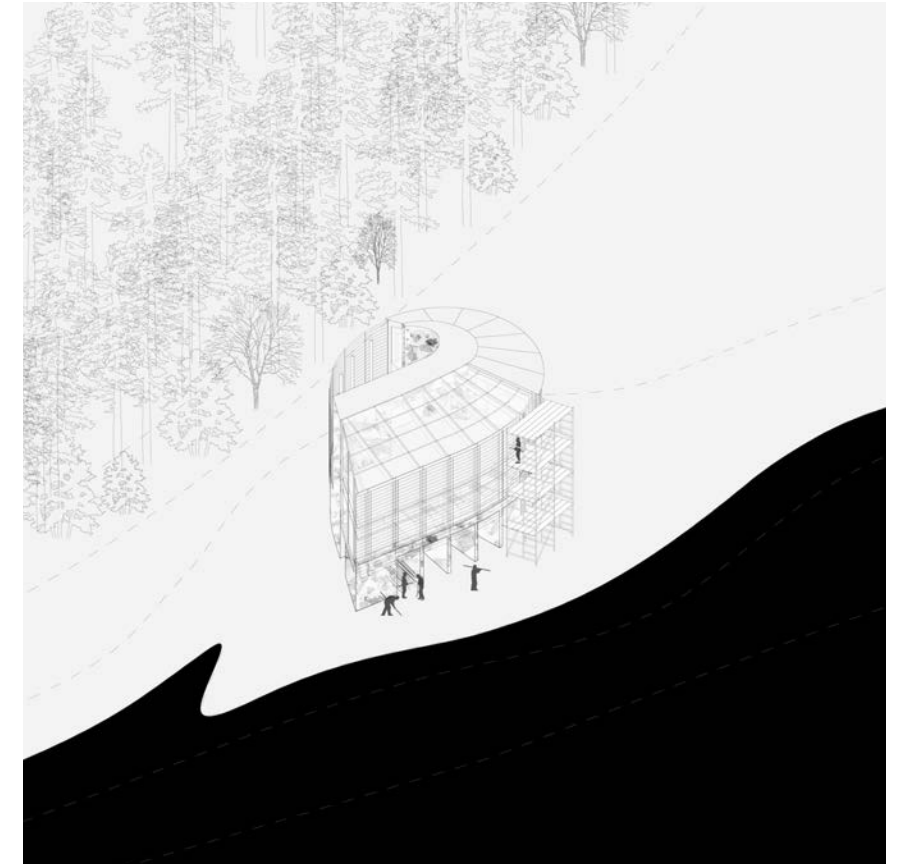




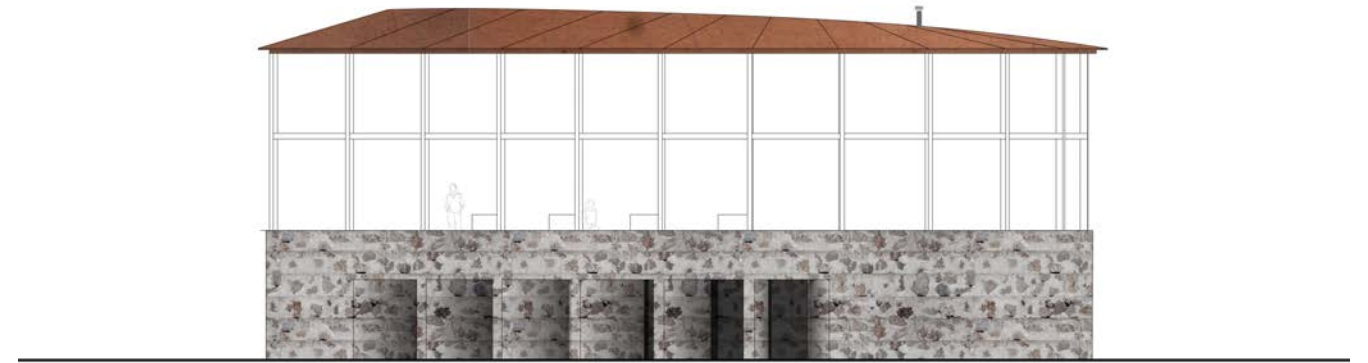
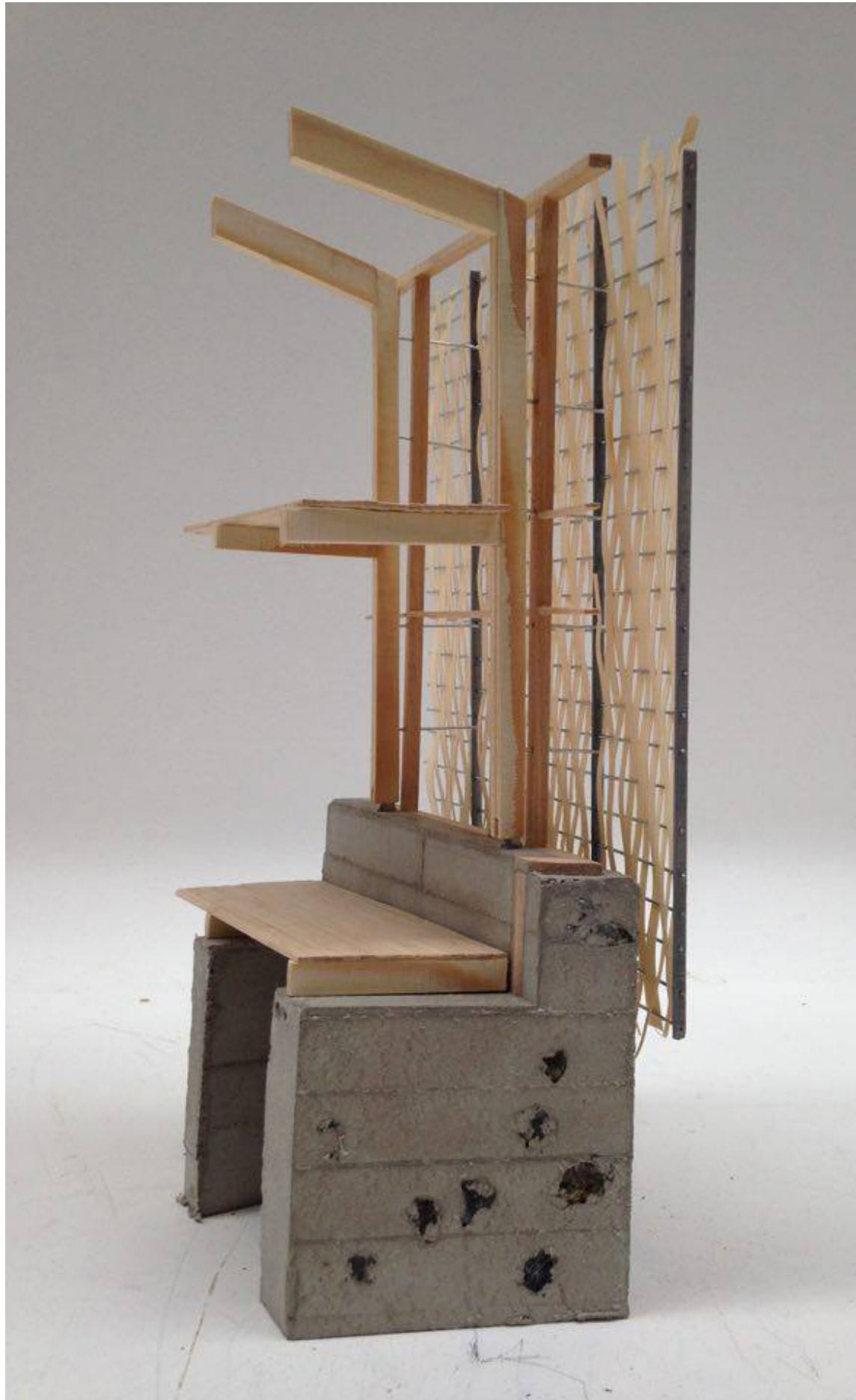
Winter Conditions



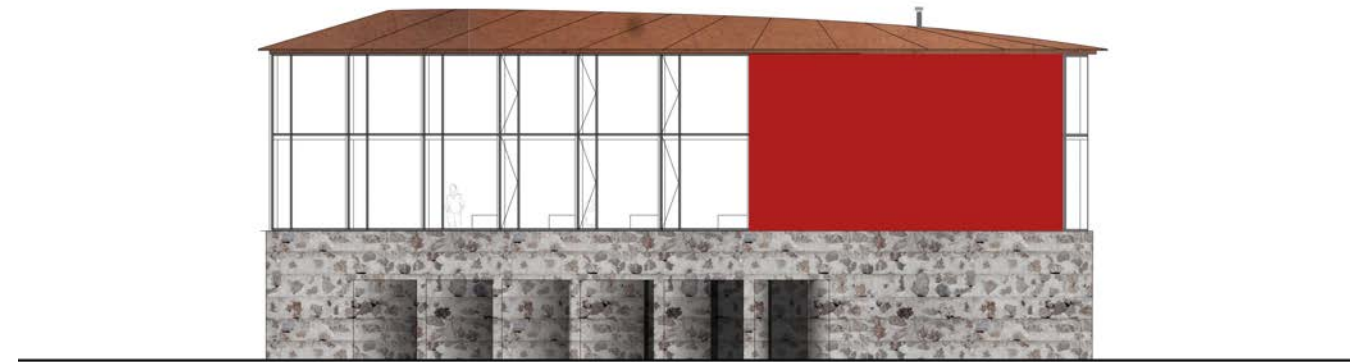
During a flood the building is accessed by boat



The woven facade is renewed every 10-15 years



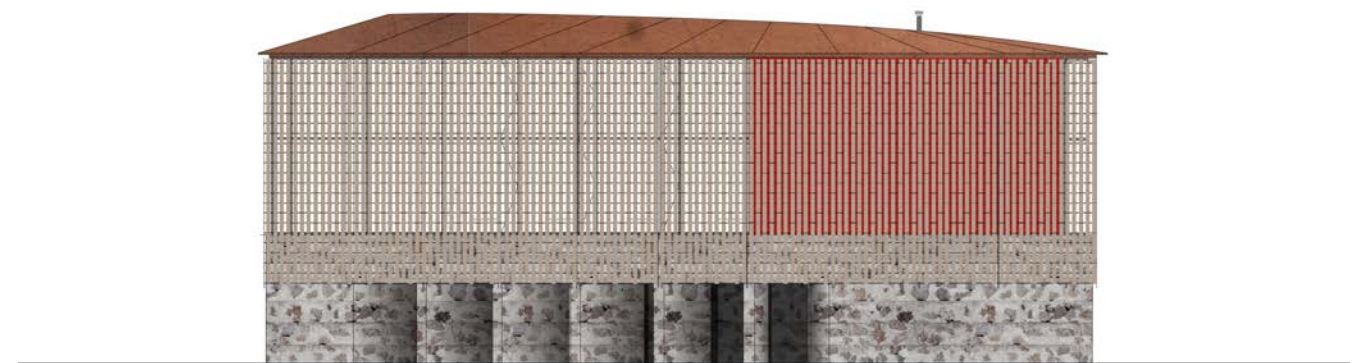
Structure



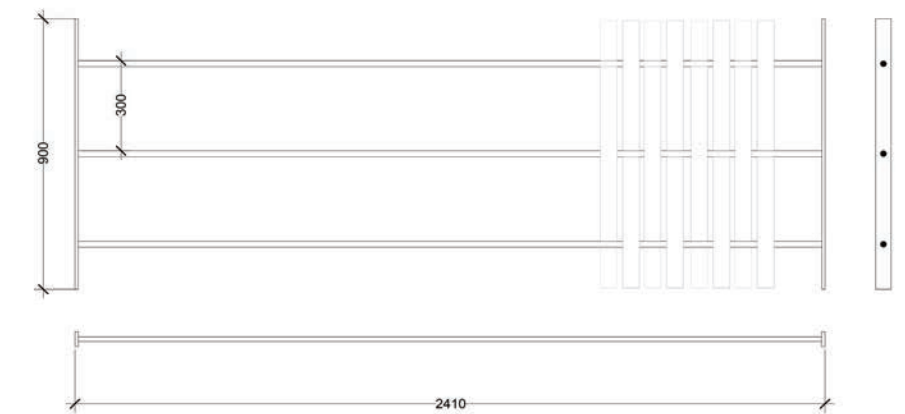
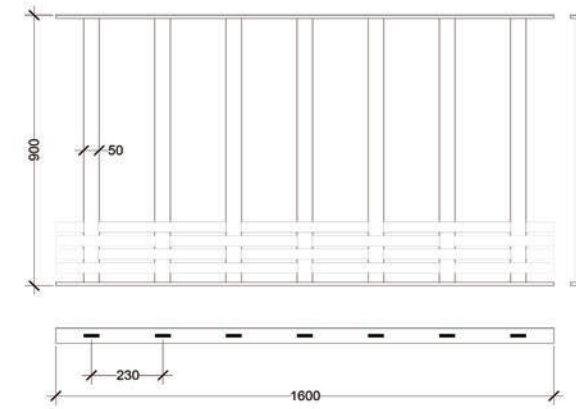
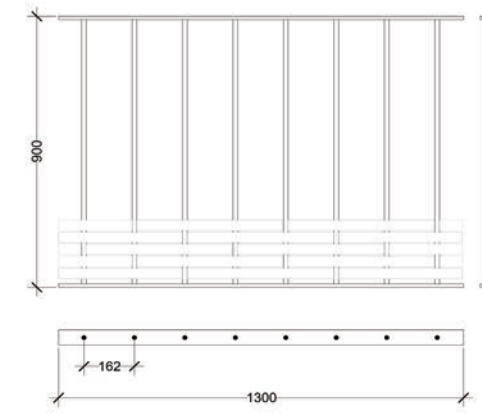
Enclosure

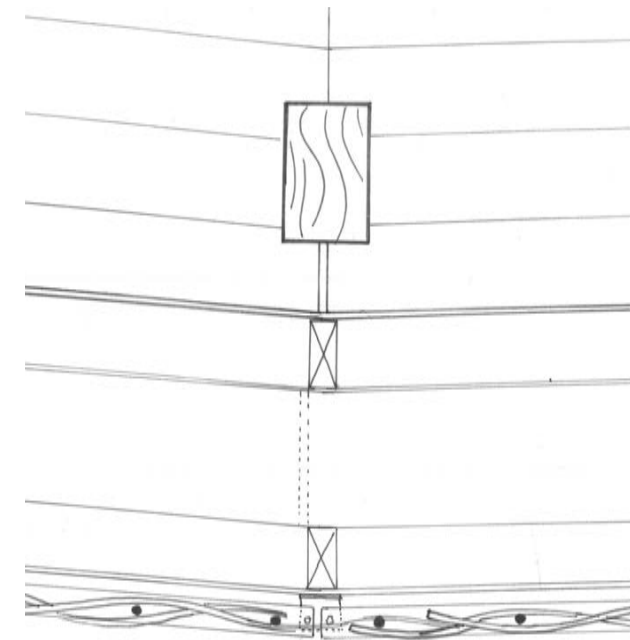
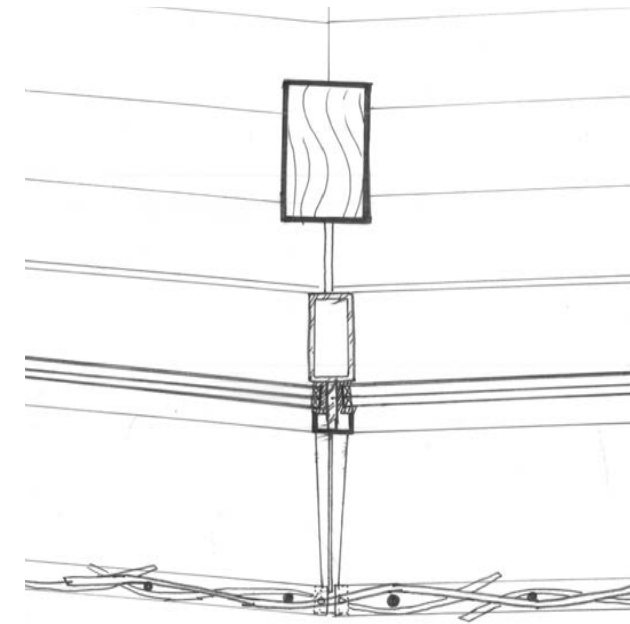


Metal Grid



Woven Screen





FLOW

Movement Studio and Physiotherapy

