



A spatial dialogue in the emerging city of Addis Ababa

bridging the gaps between informality and formality

ExploreLab | P5 | Feven G. Zeru

TU Delft

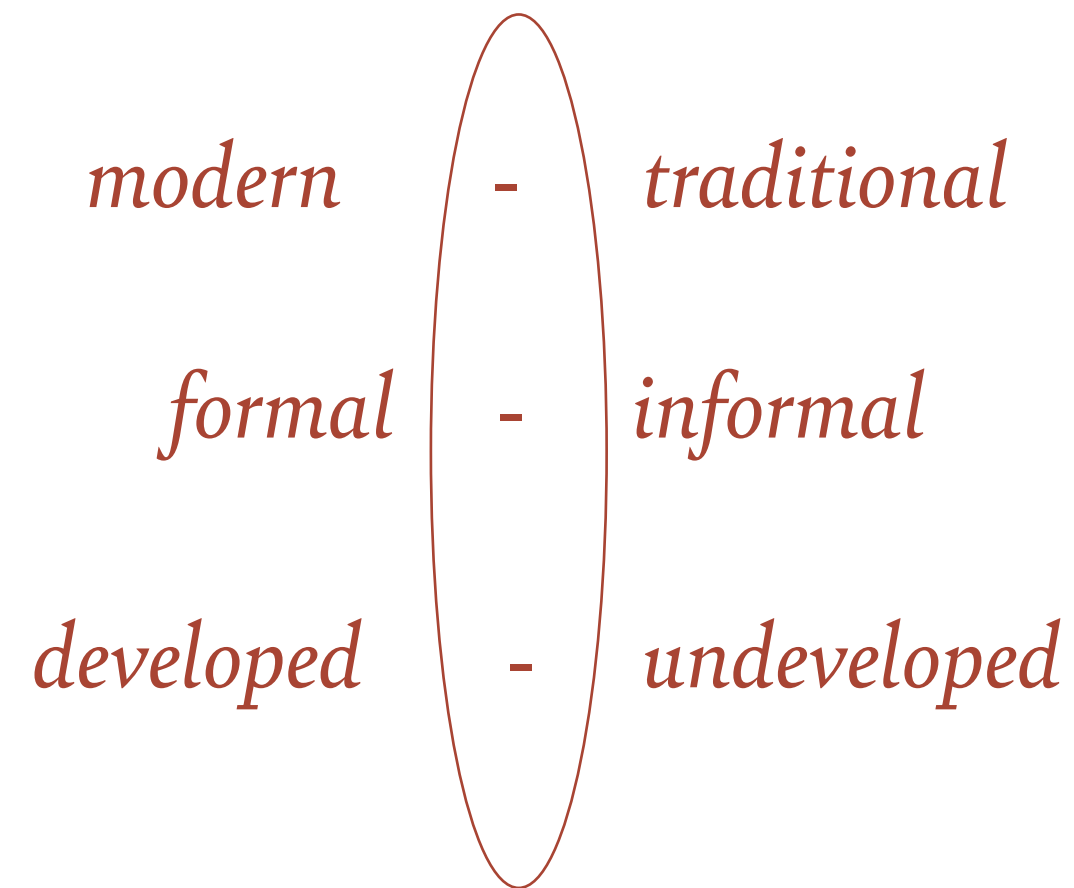
» Thinking in dichotomies such as
formal and informal
is strongly related to a dialectical mode of analysis, which
has not only been a long-standing,
intrinsic part of Western culture and discourse, but has also
always been an important historical frame of reference
to position the West
against other geographical entities. «

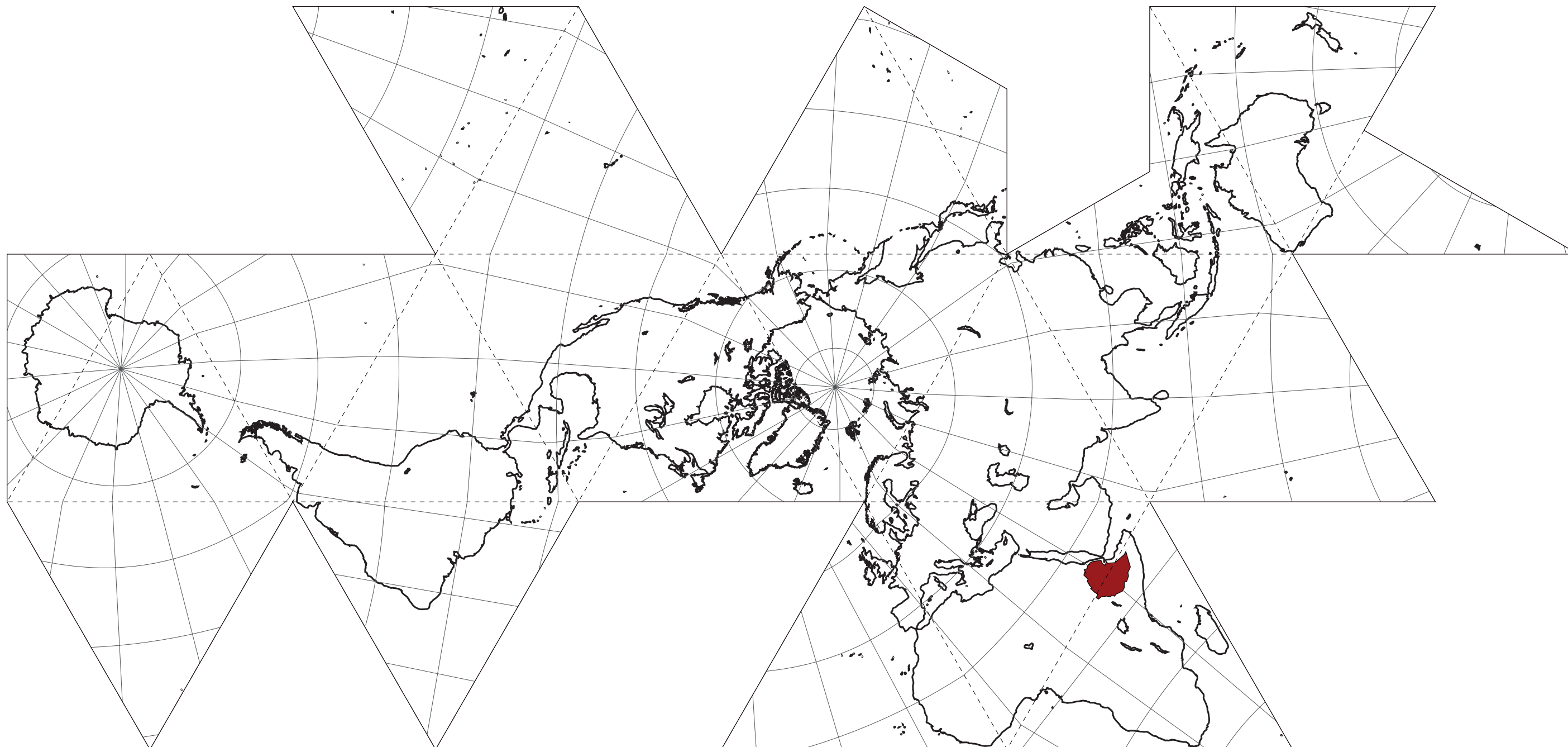
Sascha Delz
Architect and Researcher
(Dr. sc. ETH)

modern - traditional

formal - informal

developed - undeveloped



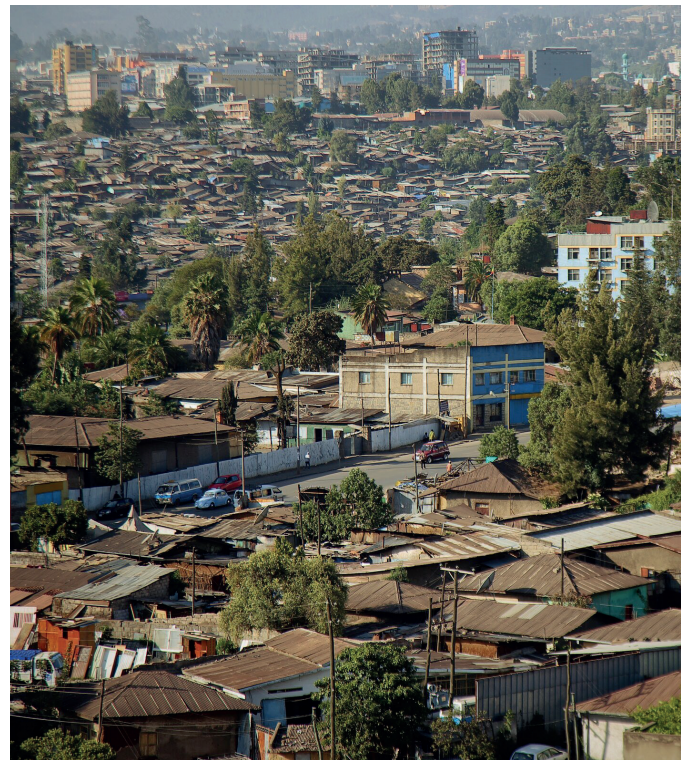


Ethiopia



Addis Ababa

ExploreLab | P5 | Feven Zeru



Addis Ababa

ExploreLab | P5 | Feven Zeru

(In)formal Housing



Addis Ababa

ExploreLab | P5 | Feven Zeru

Formalization of Housing



traditional way of living
- sefer



top down approach by government
- condominium

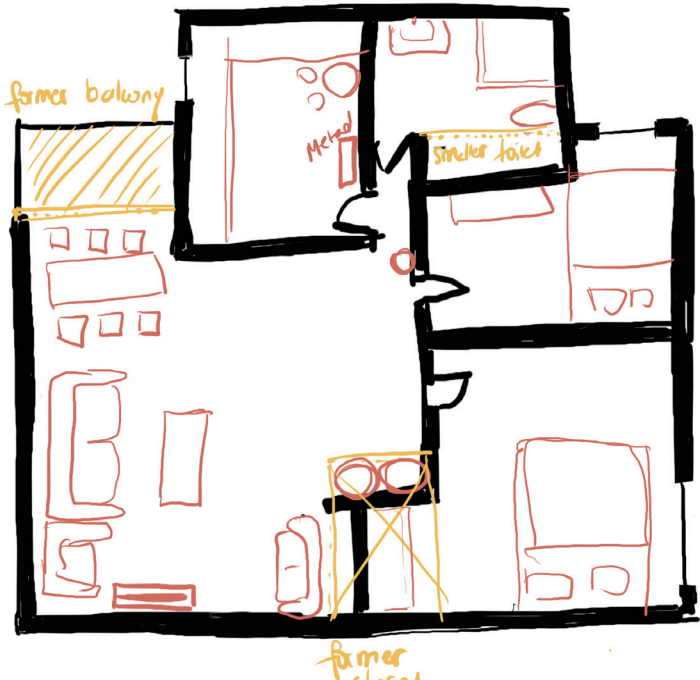
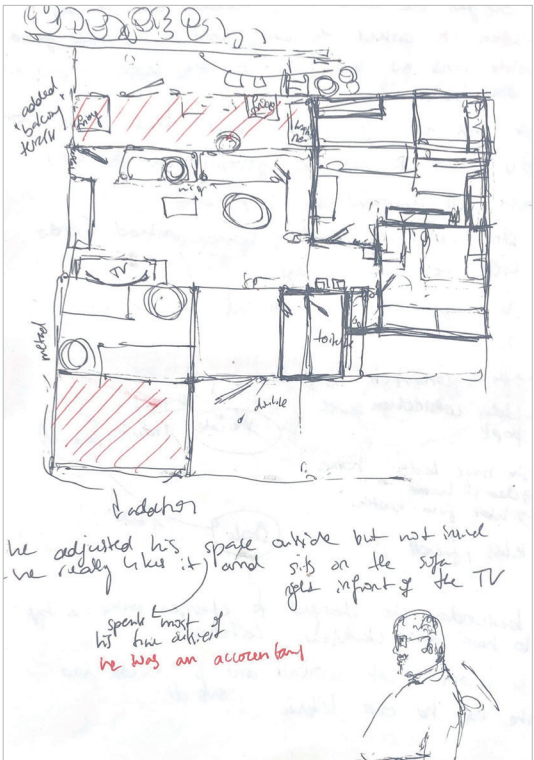
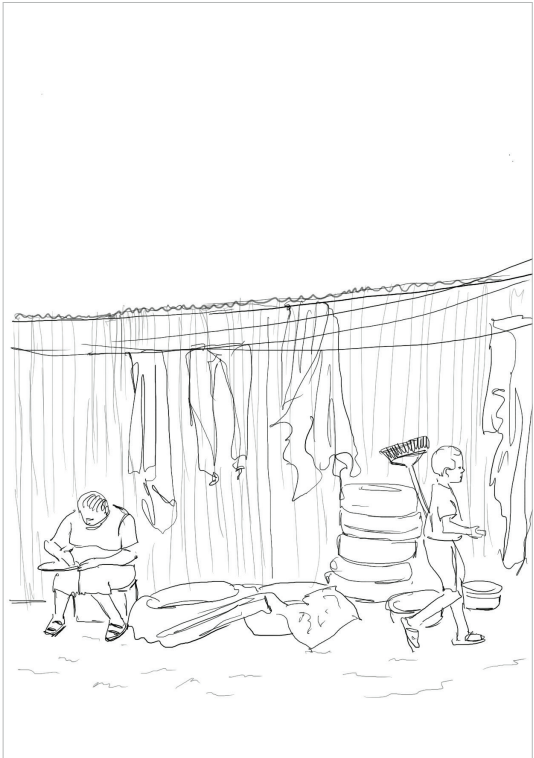
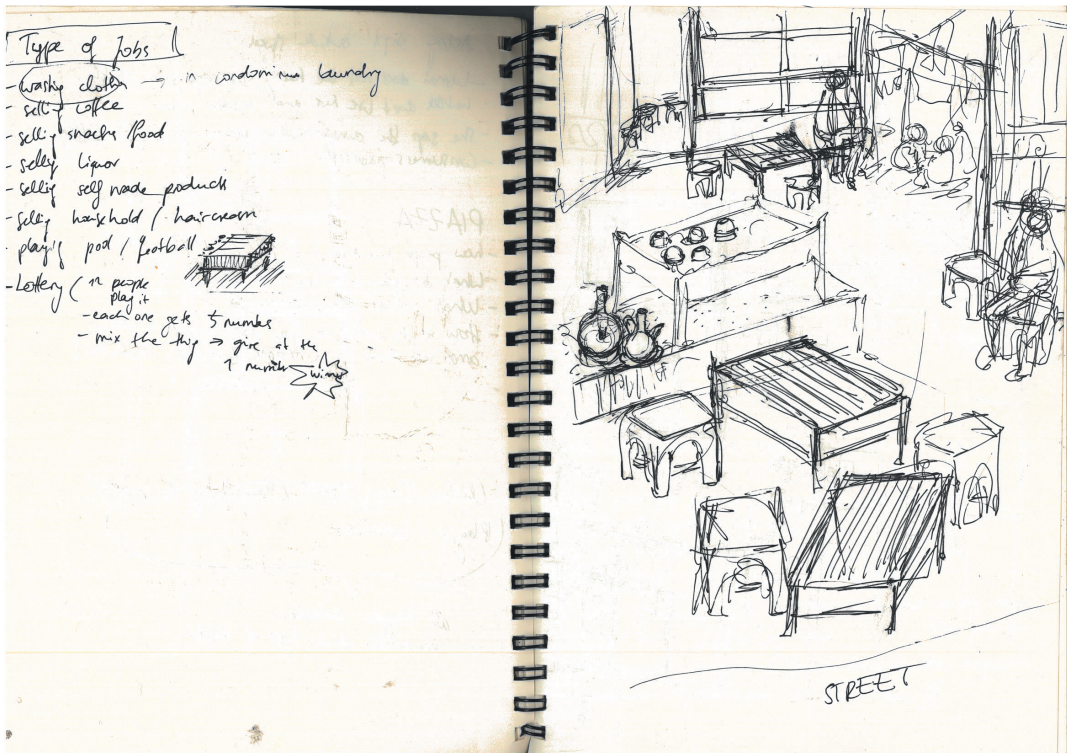
Addis Ababa

What are the **architectural requirements** for
a **home** in Ethiopia that enables **Ethiopian**
Dwellers to express their **living culture** ?

How are daily practices influenced by space ?
How is it possible to map/trace/document culture ?
*Where could architecture be a potential barrier
and carrier for culture?*

Research Question

Combination of Architectural and Ethnographic research methods



Method

Combination of Architectural and Ethnographic research methods



Method

Research in the *Sefers*



Research

Research in the *Sefers*



Kirkos



Piazza



Kazanchis

Research

Research in the *Sefers*



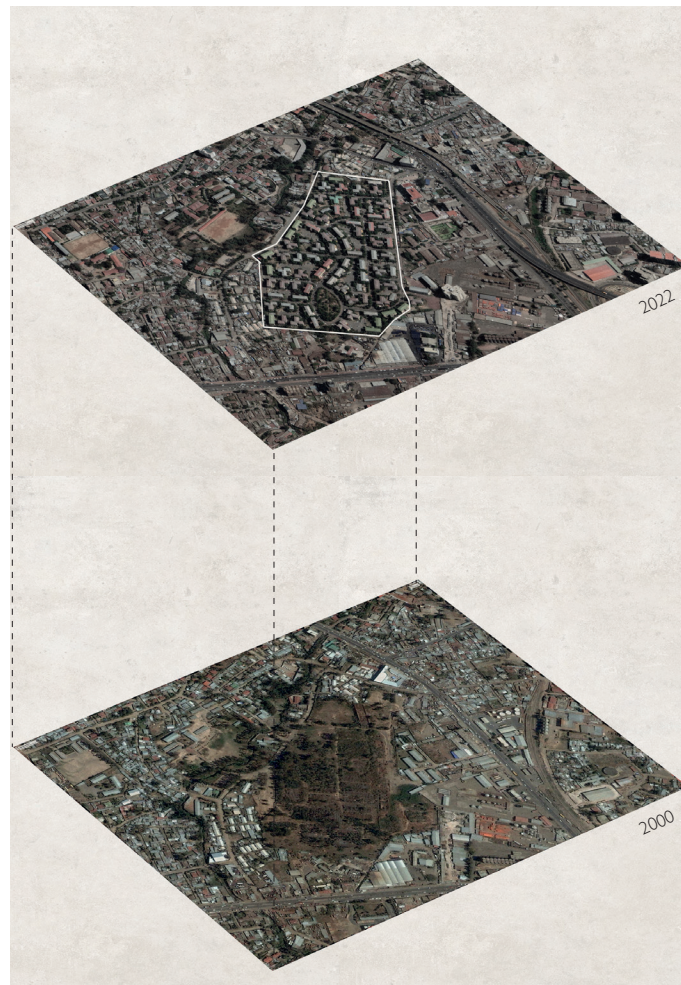
Research

Research in the *Sefers*



Research

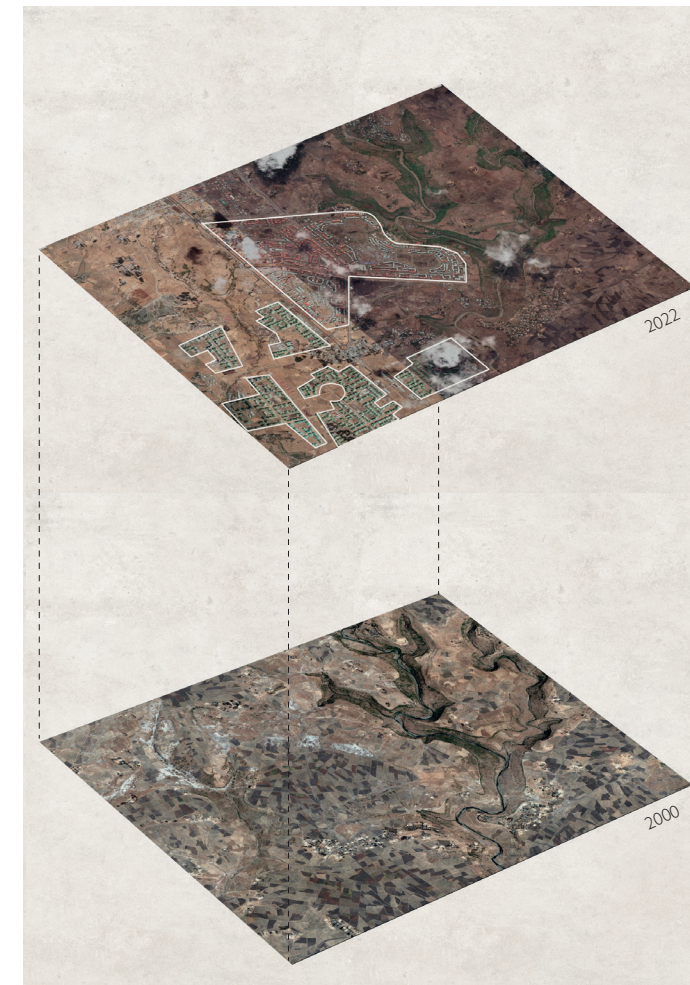
Urbanization processes



brownfield urbanization



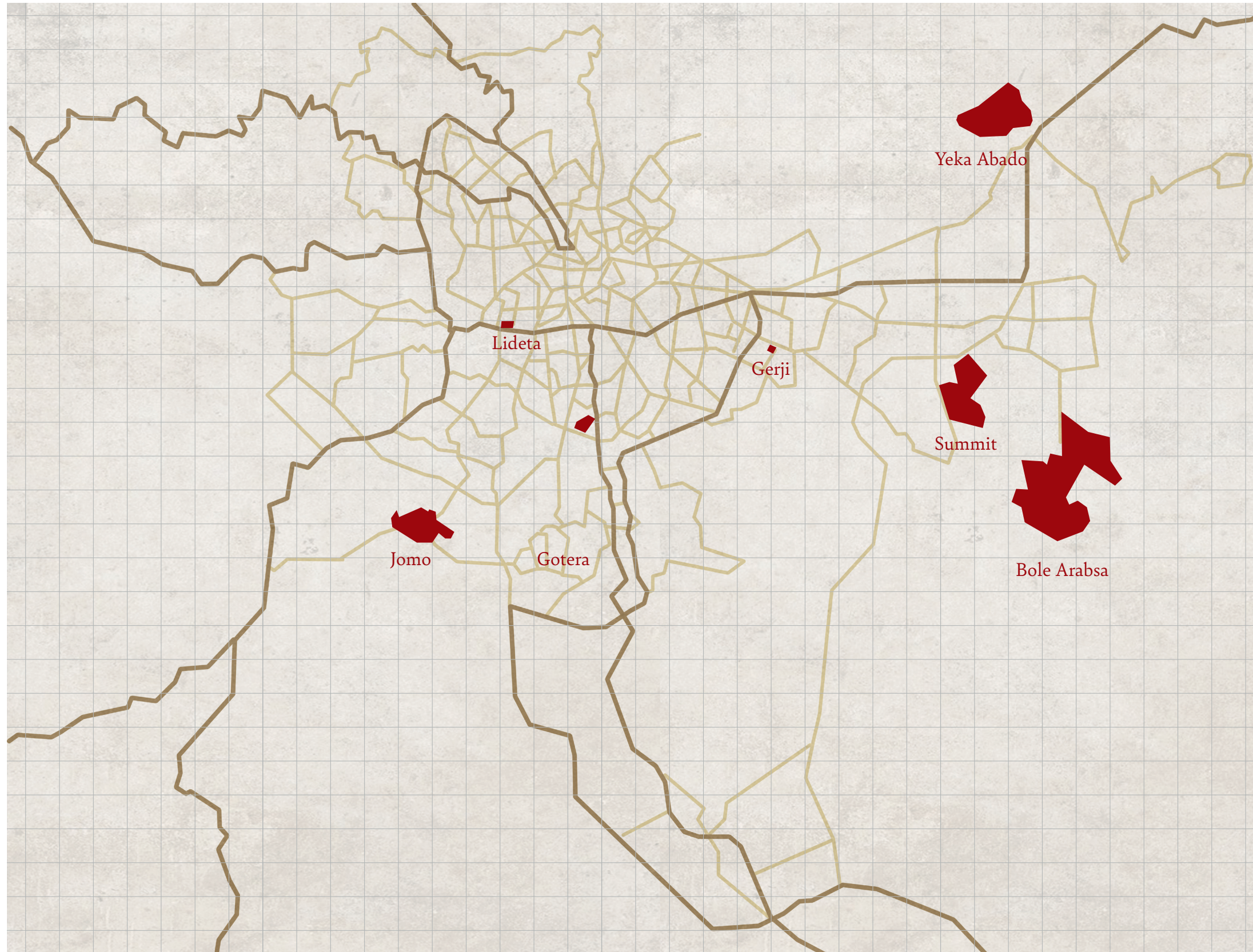
urban renewal



greenfield urbanization

Research

Condominium sites



Research

Research in the condominiums



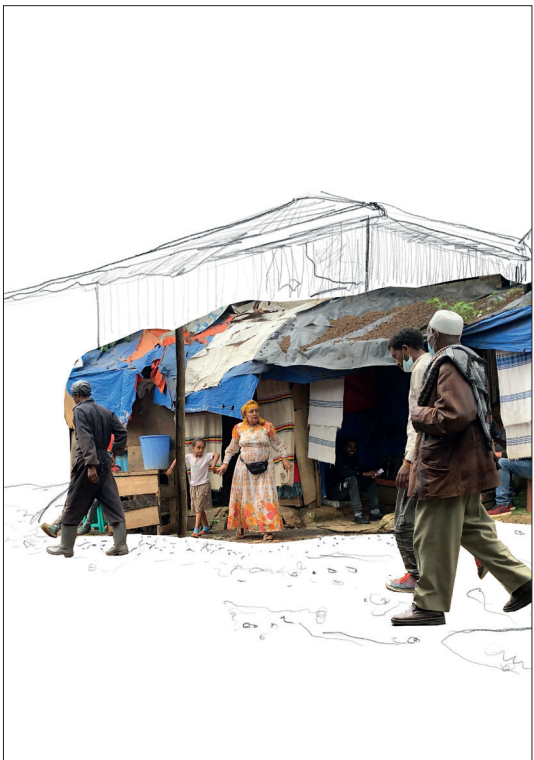
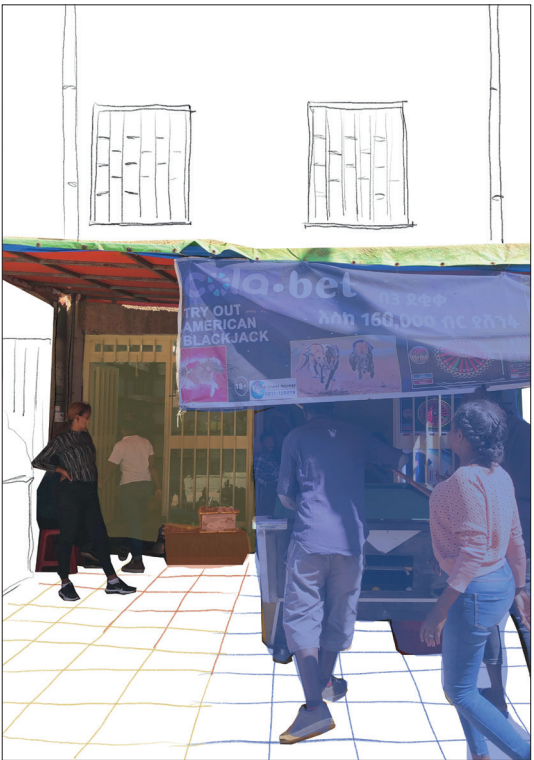
Fascination

Research in the condominiums



Fascination

Income Generation in the city



Research

Model making as a method



Kirkos (Sefer)

Model making as a method



In many settlements there are communal kitchens, but in this case the resident has her own kitchen. However, it can be said that a kitchen away from the living area is very common. Ethiopian cuisine is very much based on the Ethiopian bread, injera. For this reason, in every home there is a special pan for it, called metad.



Connected to the private outdoor space of the resident, one can enter into the semi public area. This intermediate area is a shared space with other neighbors and used for daily activities like washing clothes and producing food. One can notice a collection of objects that are used collectively.



The most prominent room is the living room. Especially the large sofa catches the eye as well as a large TV.



The public street space is used for drying herbs.



The private veranda is connected to a patio, these areas are optimal for the activities of daily living to be carried out in private.

Kirkos (Sefer)

Model making as a method



Yeka Abado (Condominium)

Model making as a method



Just as important as the large living room is the kitchen. However, it is visible that the objects that are specifically important for Ethiopian cuisine are positioned somewhat out of place.



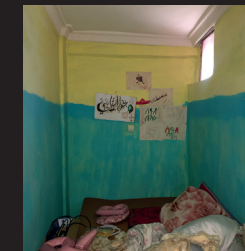
The living room is the center place in the apartment. Characteristic for an Ethiopian living room are large sofas and a big TV. The large sofas offer space for family, friends and acquaintances. Furthermore, sofas and the television



The Ethiopian coffee ceremony plays an important role in everyday life.



The hallway functions as an entrance area for both families, and accordingly can only be partially used as a social area and food production space. For those purposes residents have to go downstairs



The occupant of this apartment has pulled in another wall to allow her daughter to have her own room. This type of adaptation is widespread. Residents adapt their apartments to their own needs.



The living room in this apartment is also very noticeable. There is a large TV and instead of sofas large seat cushions.



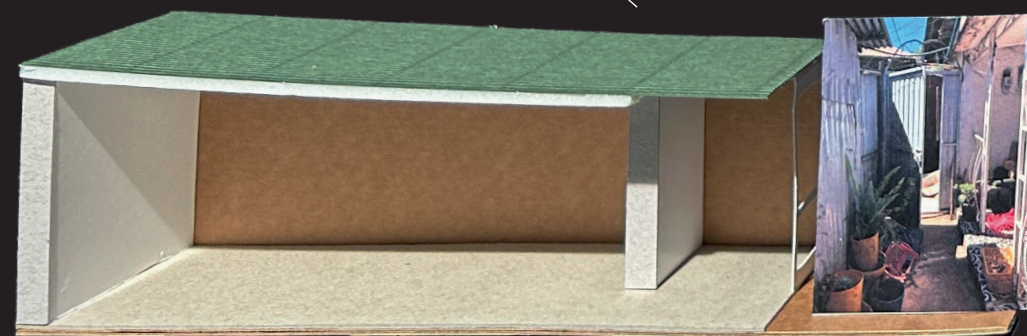
Yeka Abado (Condominium)

Model making as a method

Residents appropriated the communal corridors despite the spatial restrictions.

Residents that have the financial means transformed their balconies to extend their living spaces.

The transition from the interior to a veranda and patio marks important thresholds that are appropriated for domestic activities



Kirkos (Sefer)



Yeka Abado (Condominium)

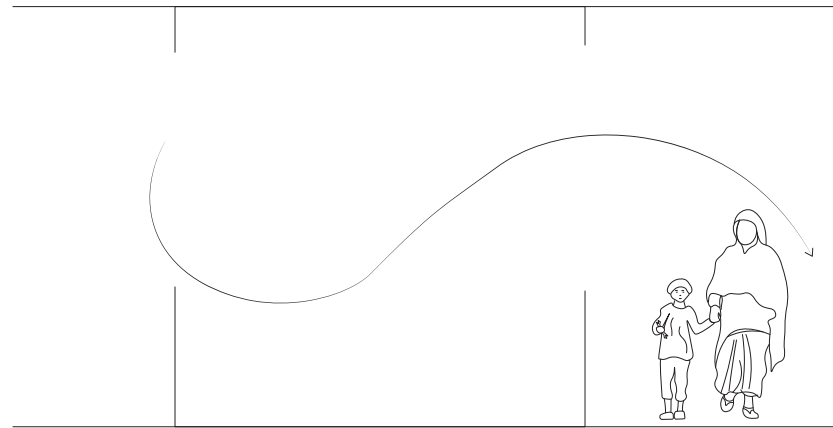
Ingredients of the Design



Cultural Activities



Food Production



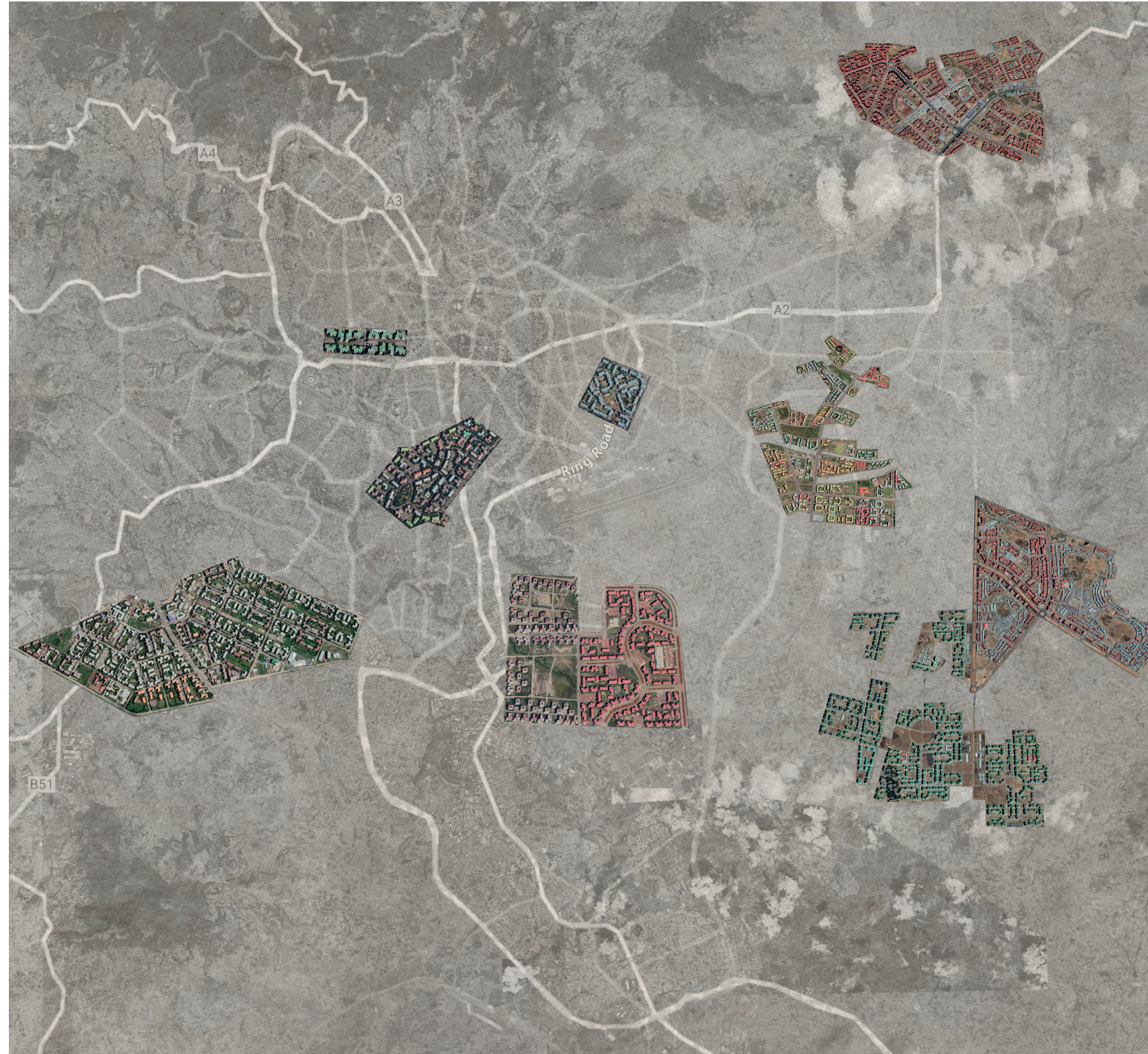
Gradients from
Private to Public



Communal Corners



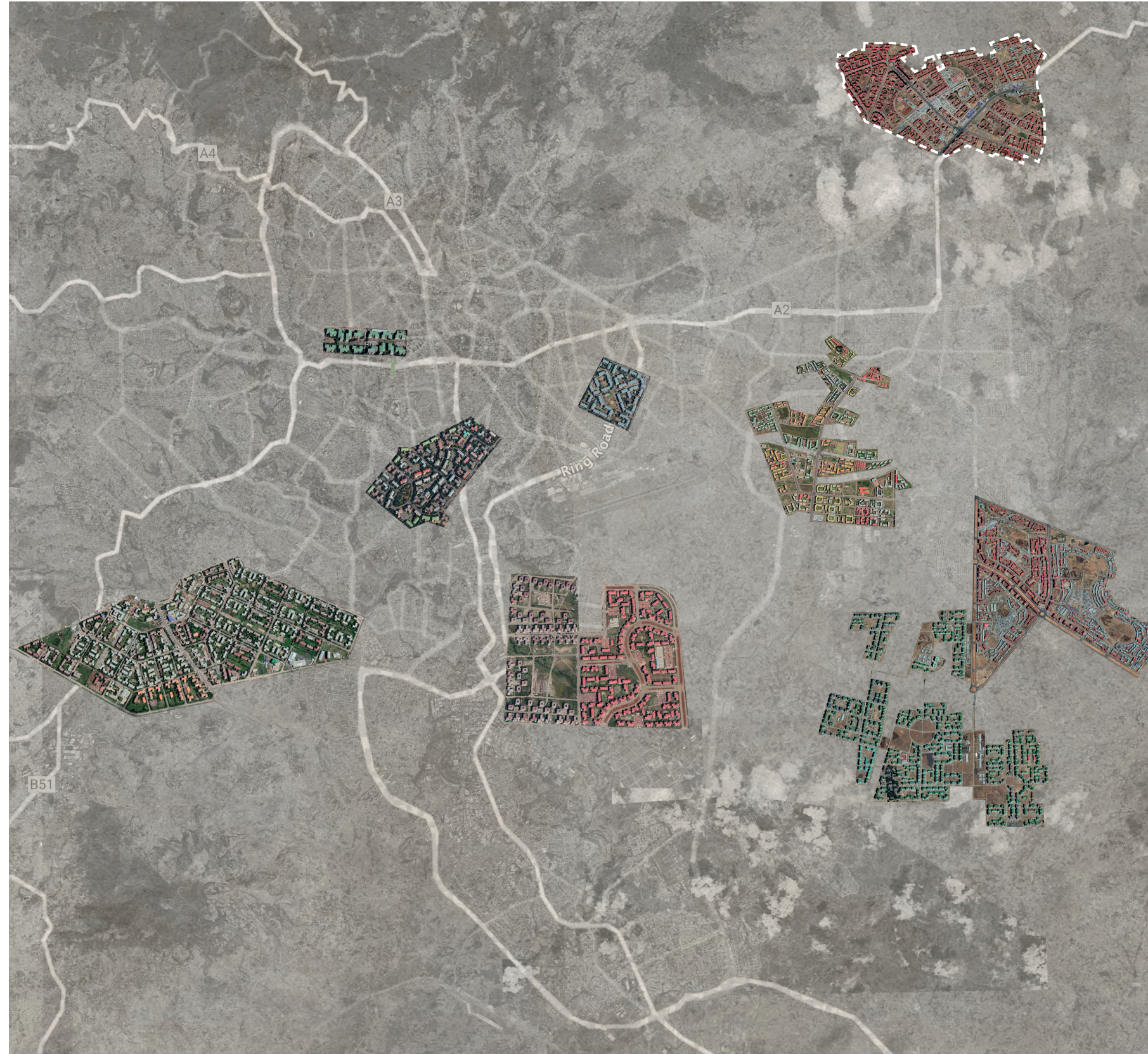
Choosing a site



Addis Ababa

ExploreLab | P5 | Feven Zeru

Choosing a site



Addis Ababa

ExploreLab | P5 | Feven Zeru

Yeka Abado



Site Analysis

ExploreLab | P5 | Feven Zeru

Yeka Abado



Site Analysis

Land Use Plan



1: 2000

Land Use Plan



1: 2000

Site Analysis

ExploreLab | P5 | Feven Zeru

Project Location



Site Analysis

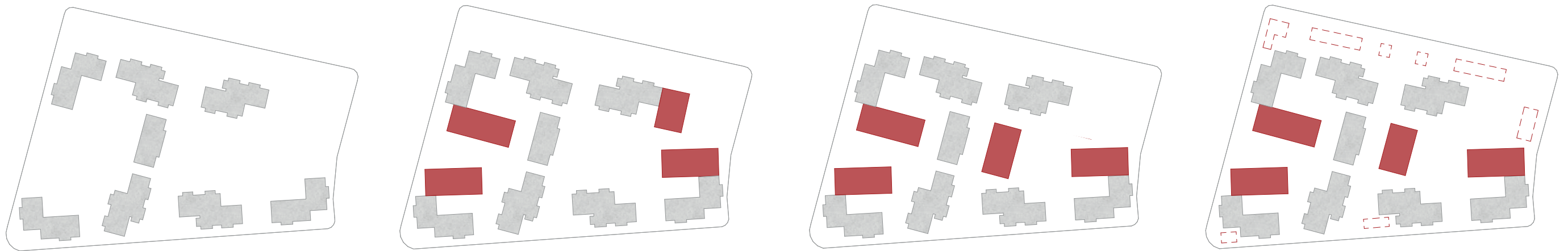
ExploreLab | P5 | Feven Zeru

Neighbourhood Concept



Strategy

Densification Study



Design

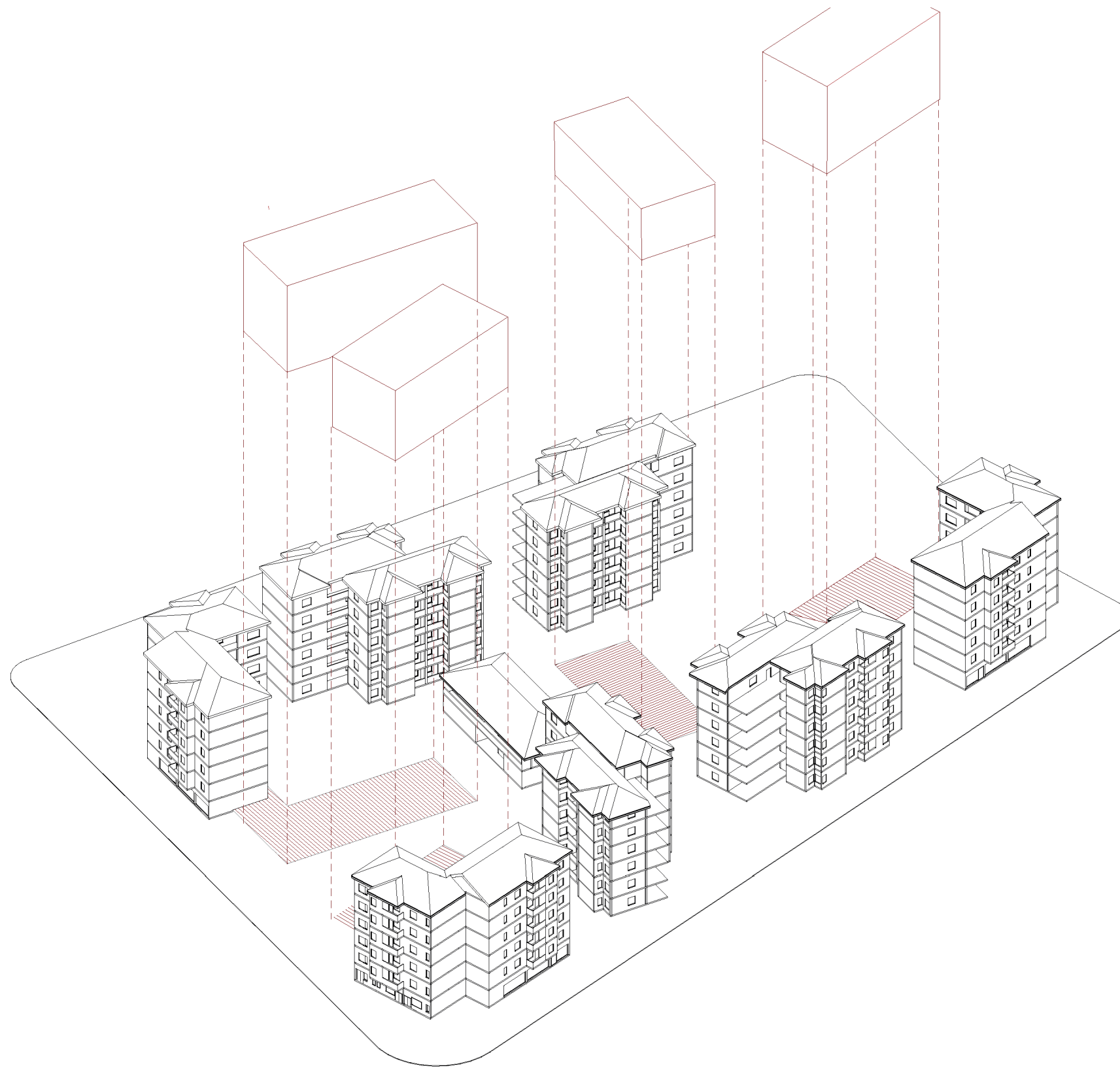
ExploreLab | P5 | Feven Zeru

Before placing the interventions



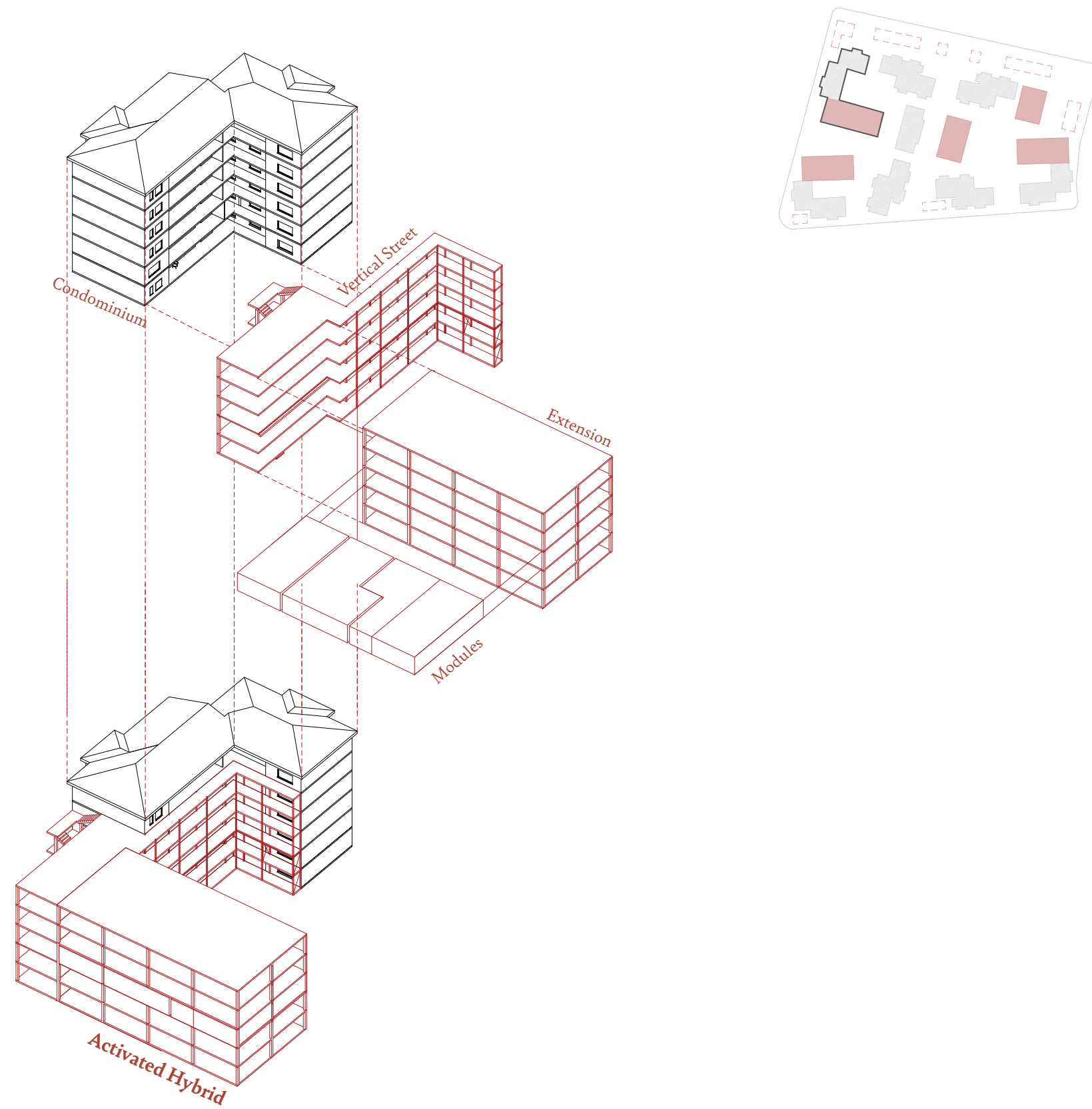
Design

After placing the interventions



Design

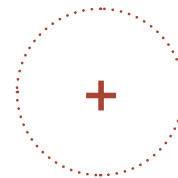
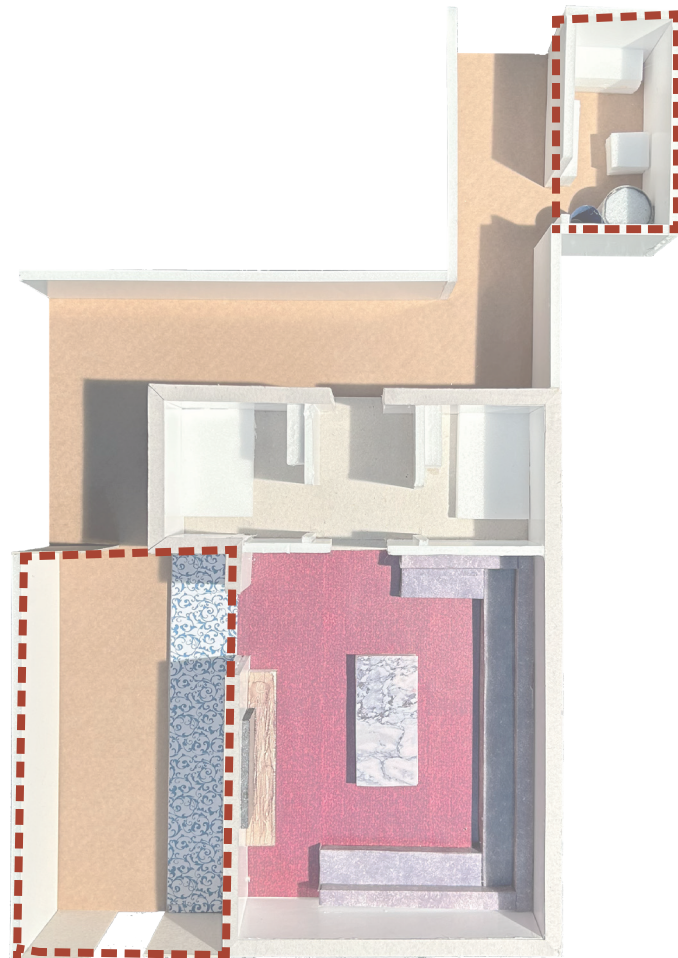
Housing Concept



Strategy

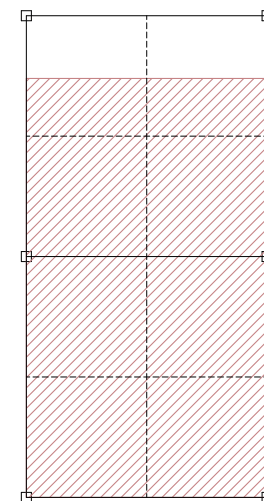
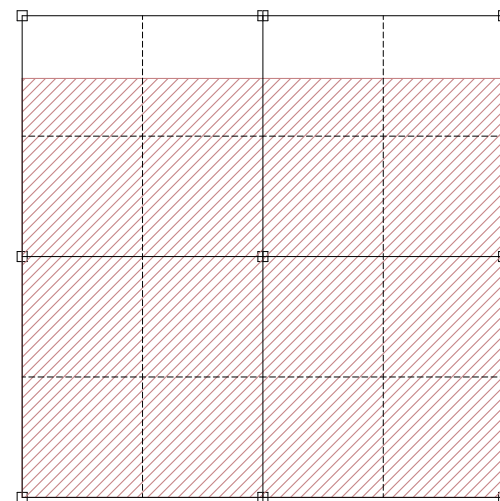
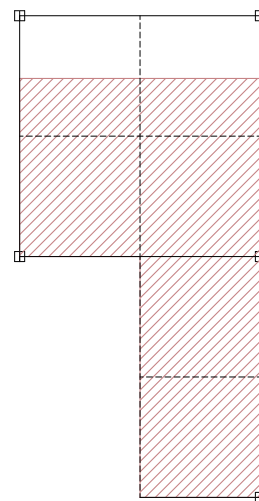
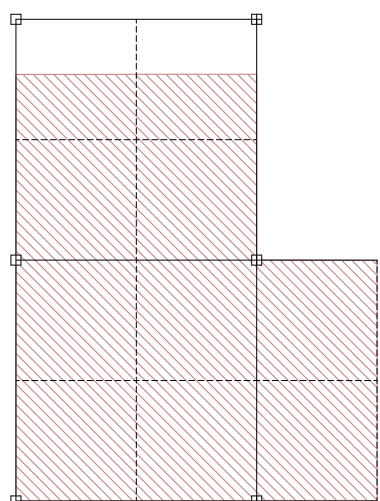
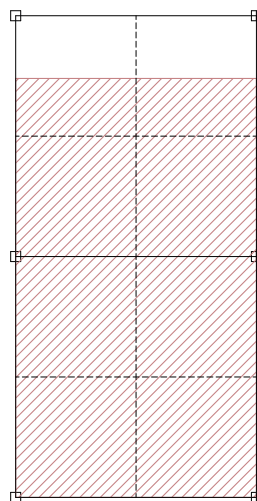
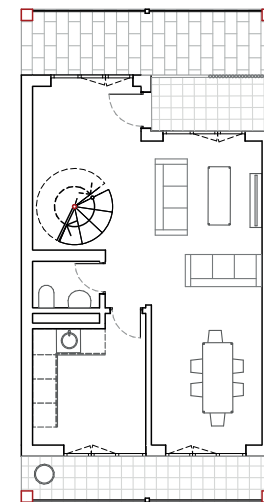
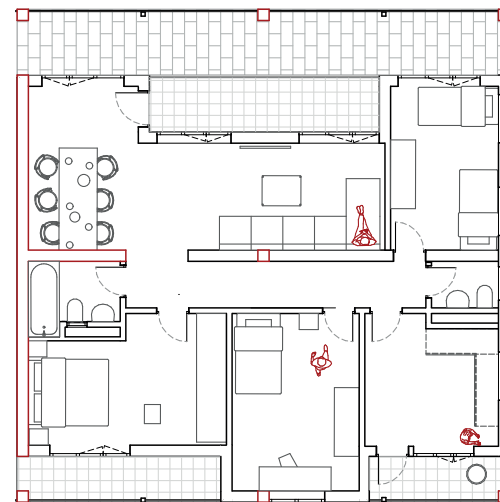
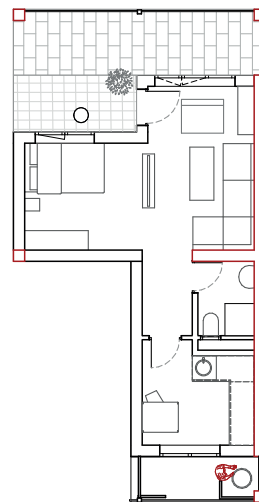
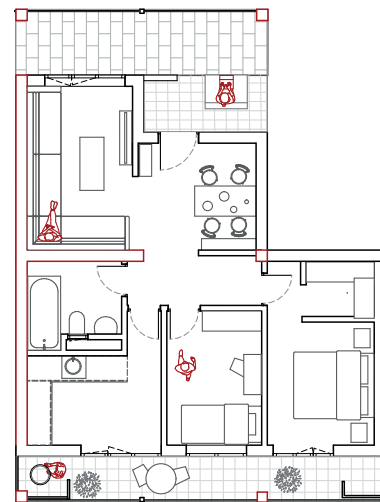
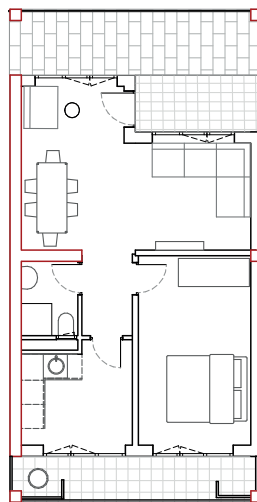
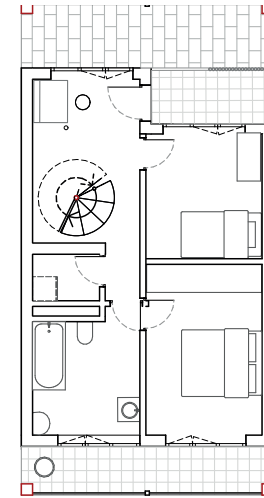
ExploreLab | P5 | Feven Zeru

Designing the Apartments



Design

Floor plans



1/2 Bedrooms

2/3 Bedrooms

Studio

3/4 Bedrooms

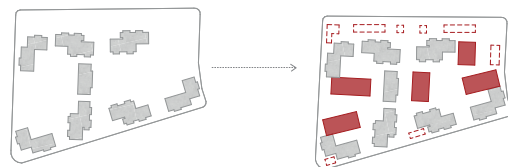
Maisonette with
2 Bedrooms

Design

Activated Neighbourhood



Ground Floorplan 1:500

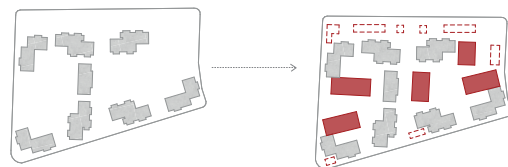


Design

Activated Neighbourhood



Typical Floorplan 1:500



Design

ExploreLab | P5 | Feven Zeru



Site Section 1:200



Design

ExploreLab | P5 | Feven Zeru

Activated Hybrid



Ground Floor 1:200

Design

ExploreLab | P5 | Feven Zeru

Activated Hybrid

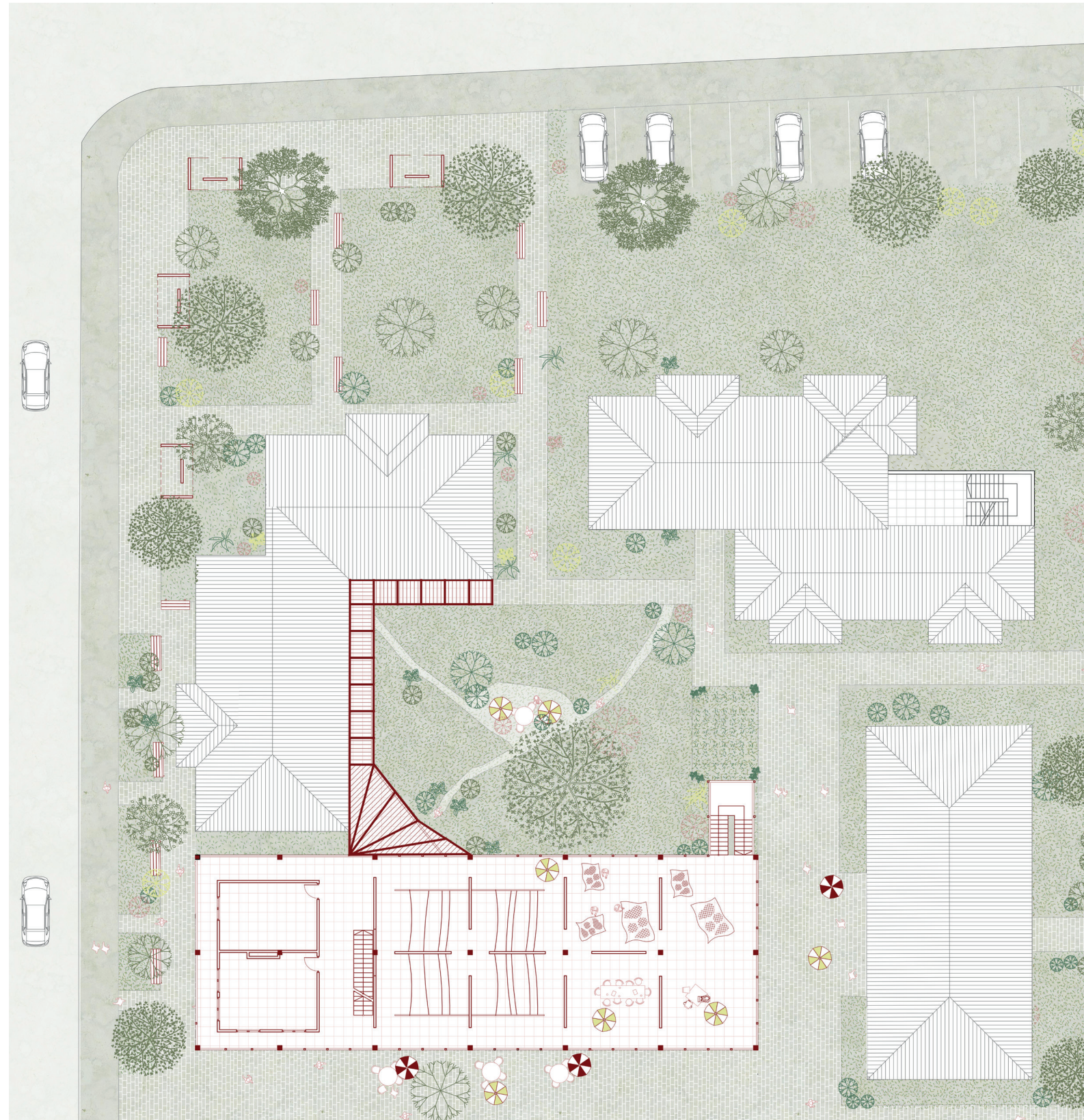


Typical Floor 1:200

Design

ExploreLab | P5 | Feven Zeru

Activated Hybrid

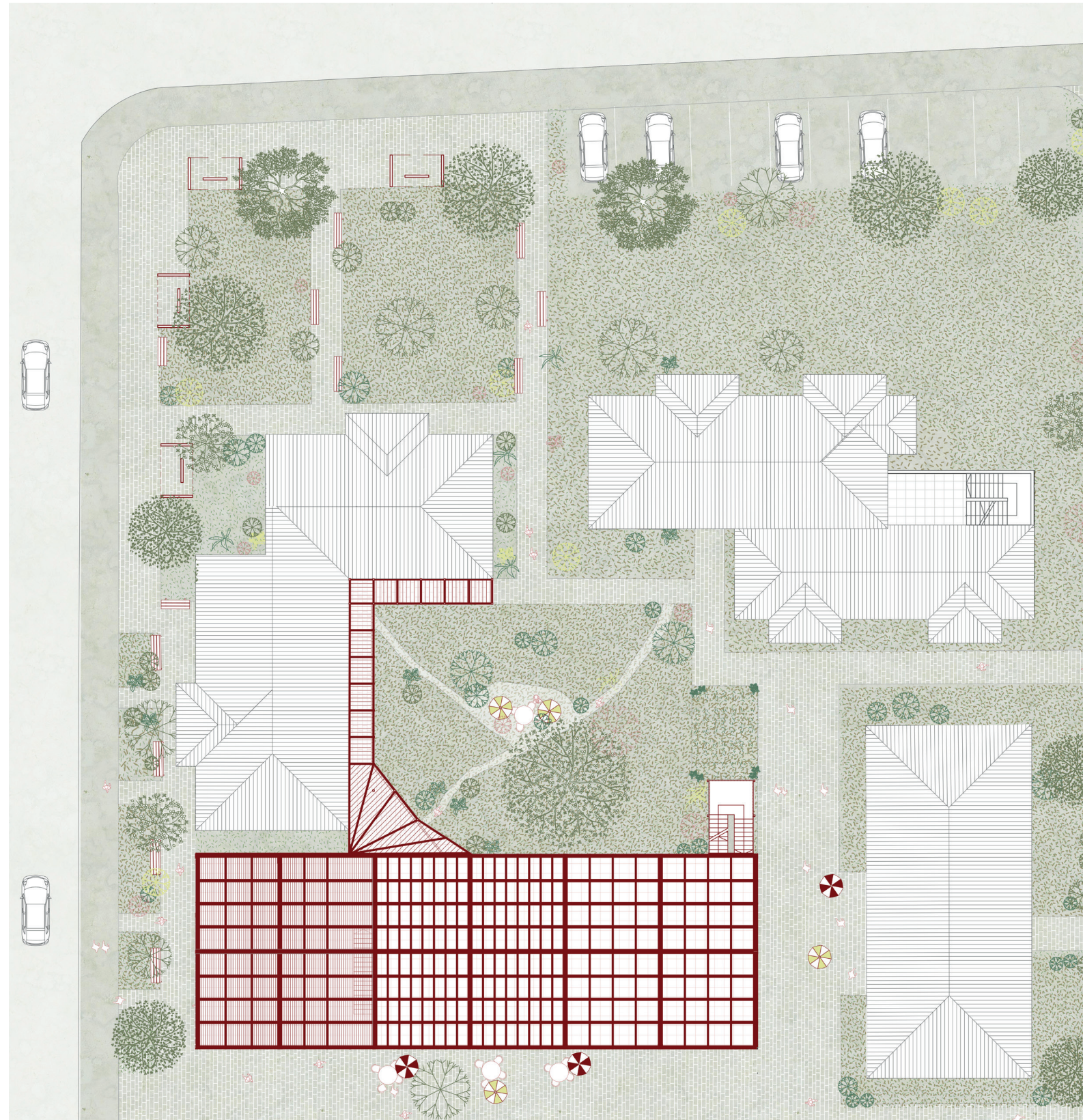


Roof Terrace 1:200

Design

ExploreLab | P5 | Feven Zeru

Activated Hybrid



Roof 1:200

Design

ExploreLab | P5 | Feven Zeru

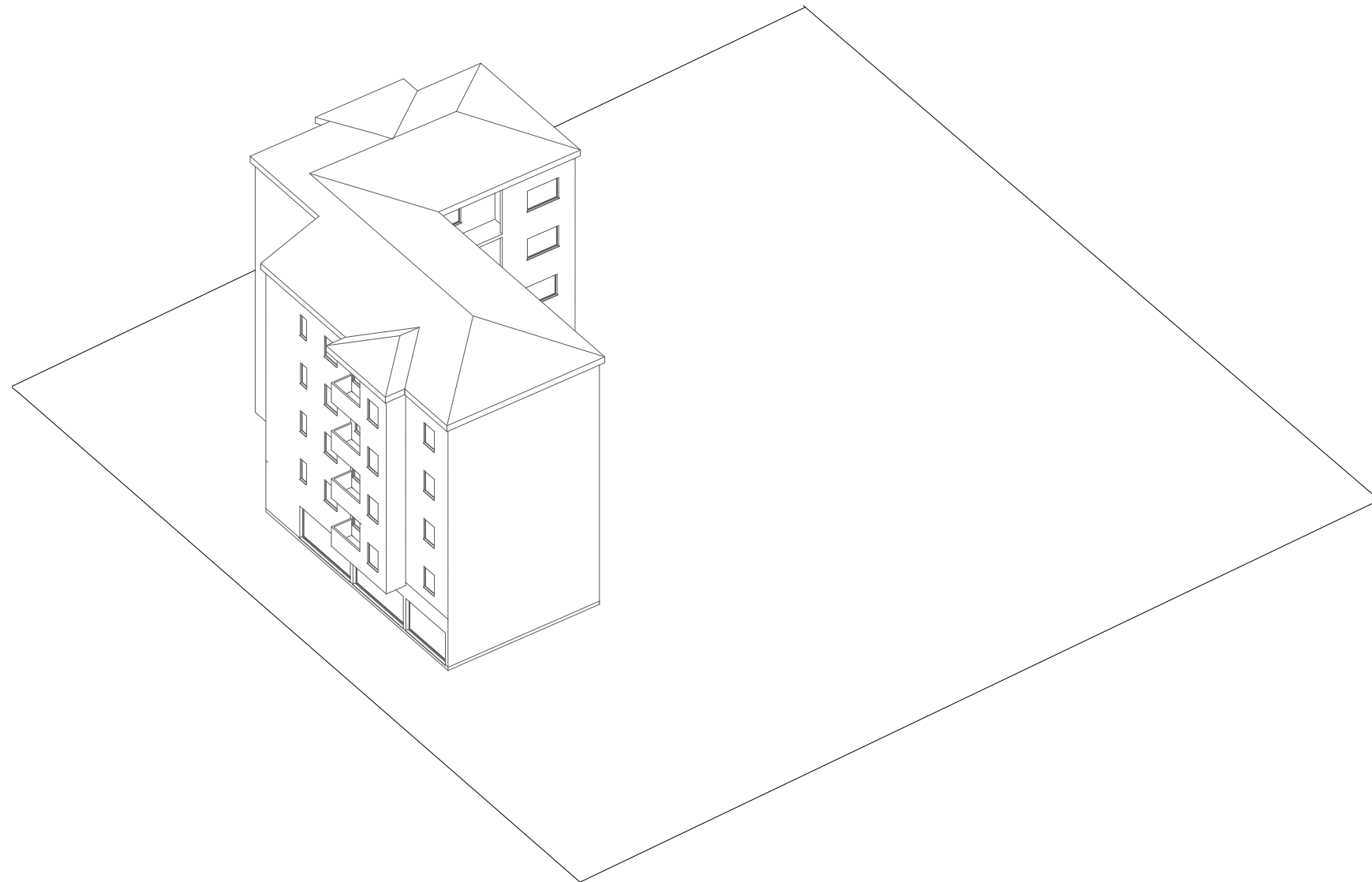
Life at the Rooftop





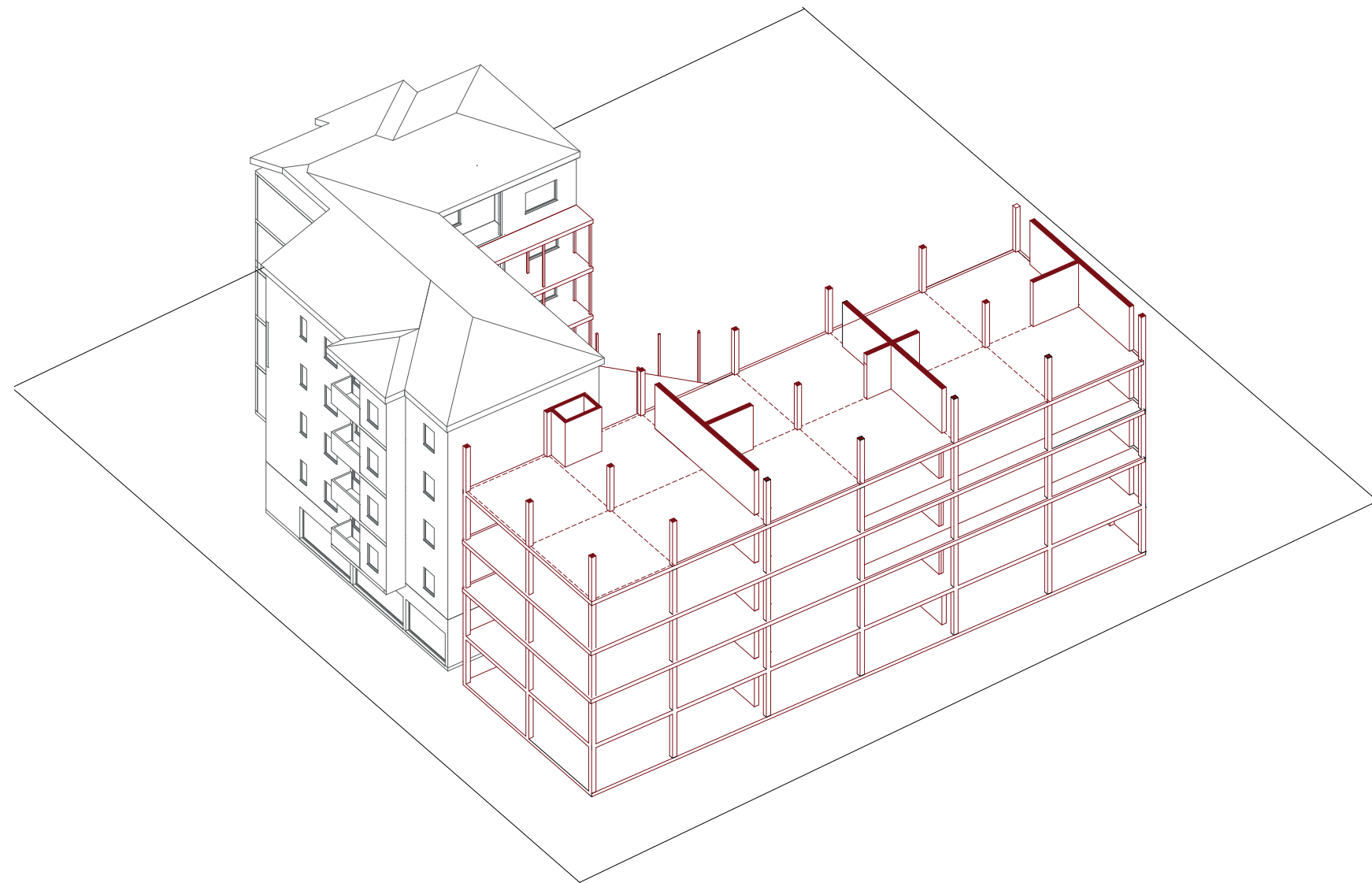
Section 1:50

Construction *Process*



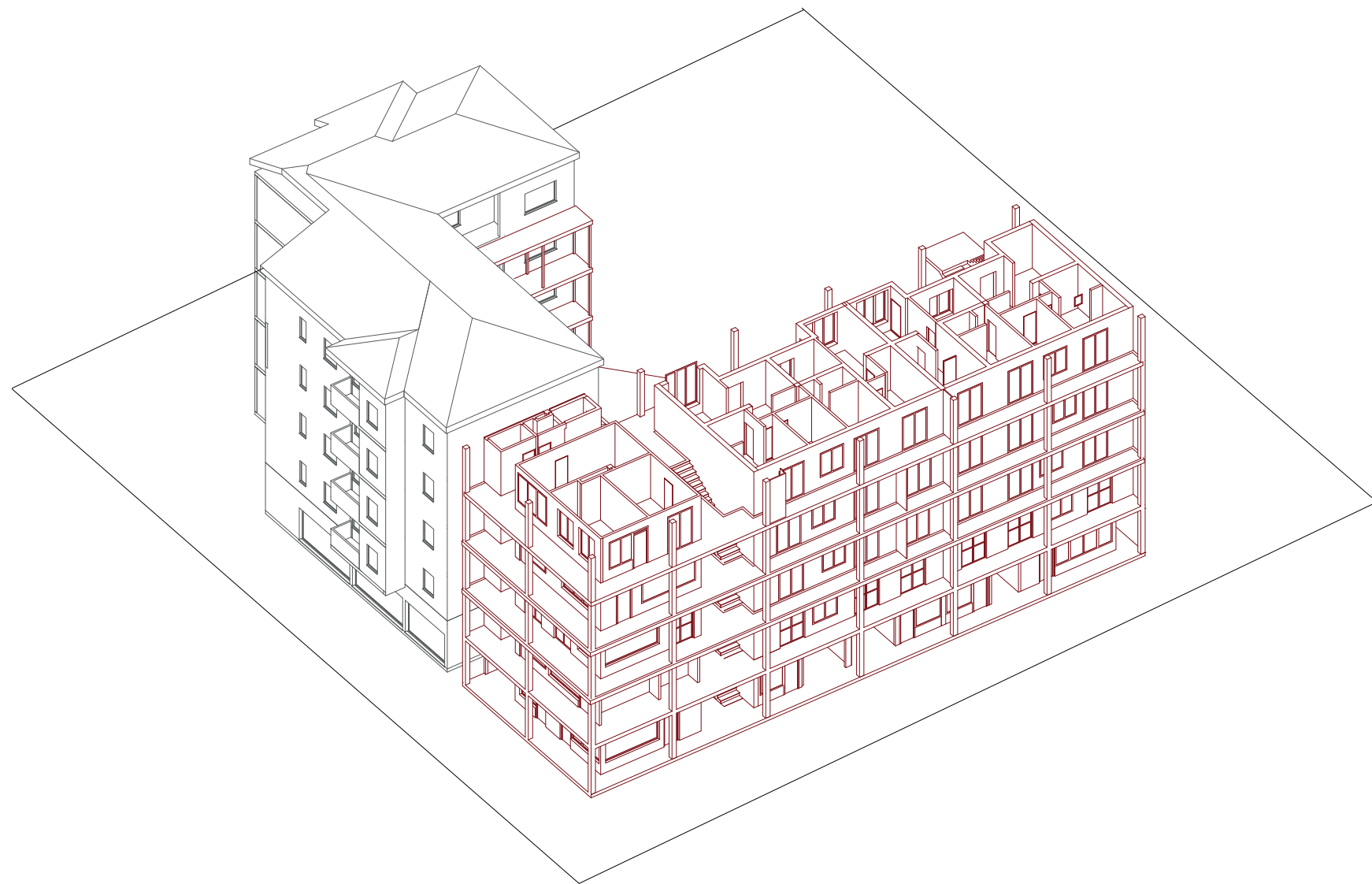
Design

ExploreLab | P5 | Feven Zeru



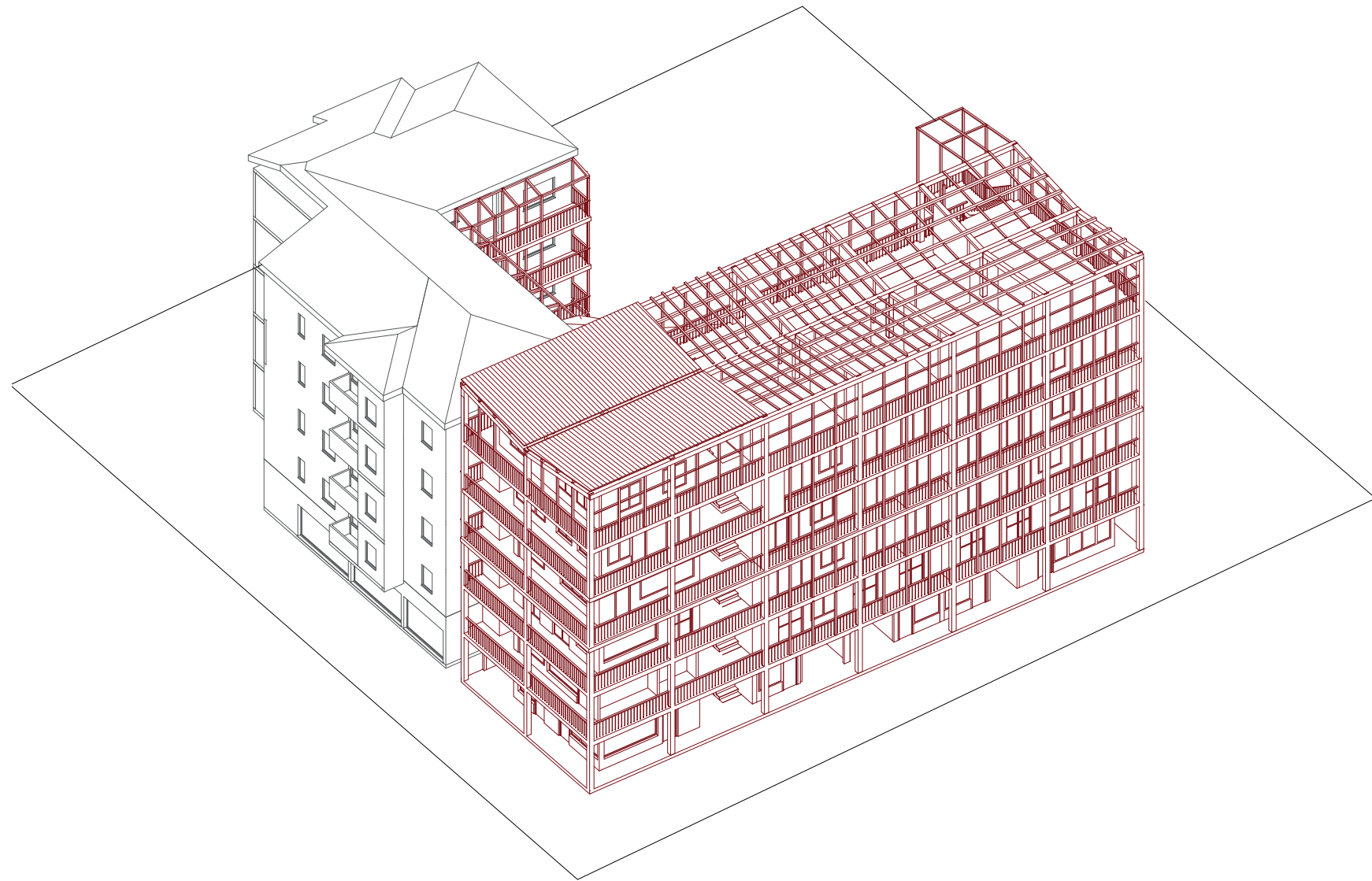
Design

ExploreLab | P5 | Feven Zeru



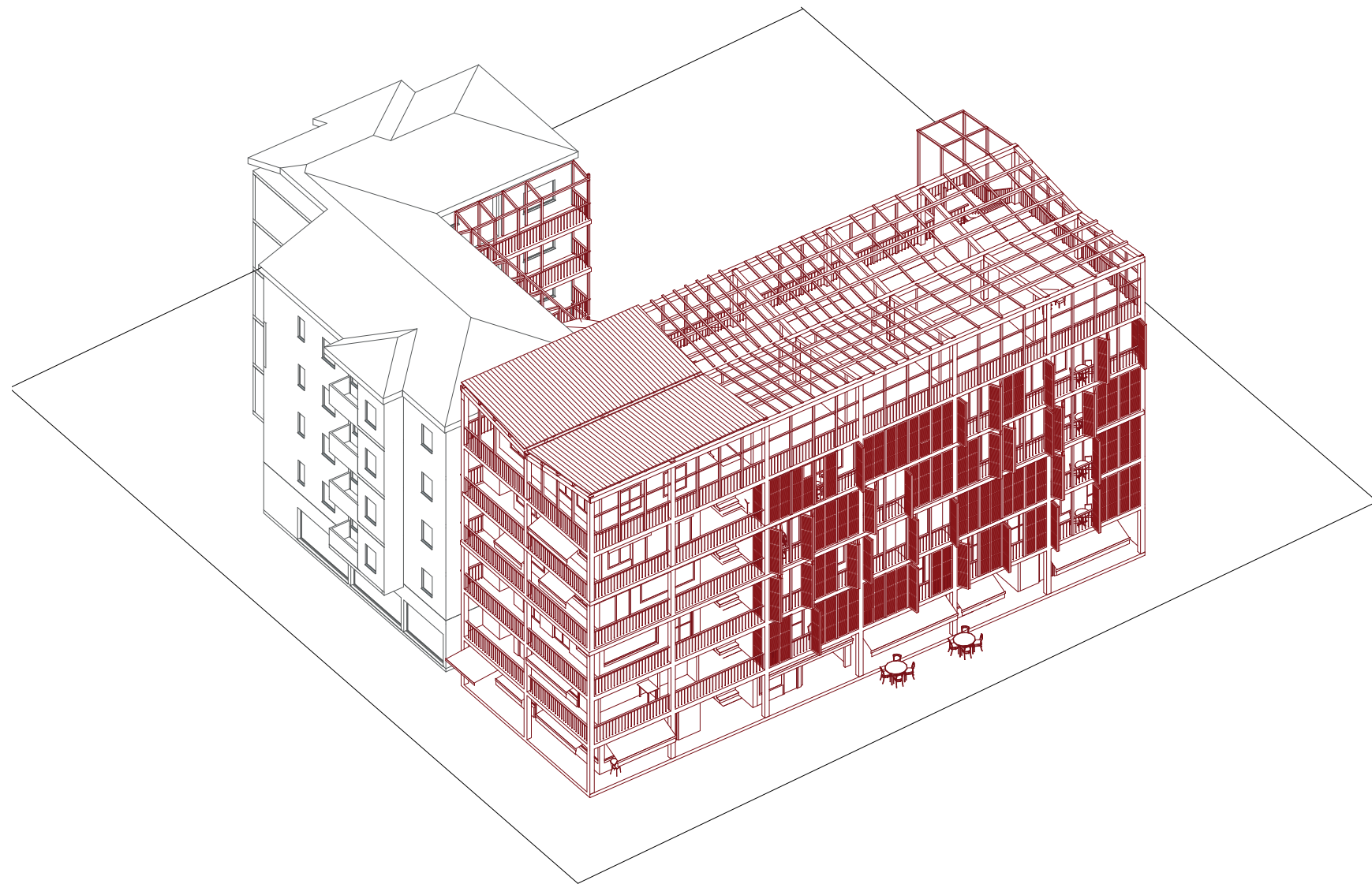
Design

ExploreLab | P5 | Feven Zeru



Design

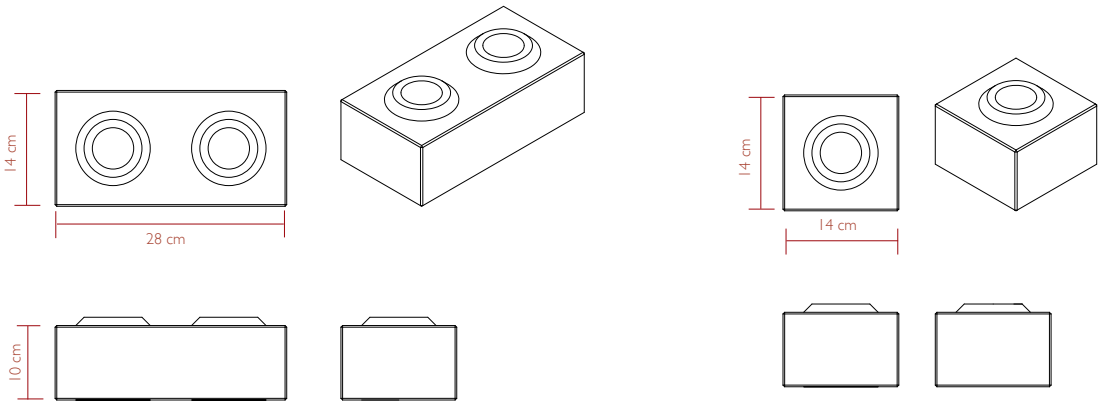
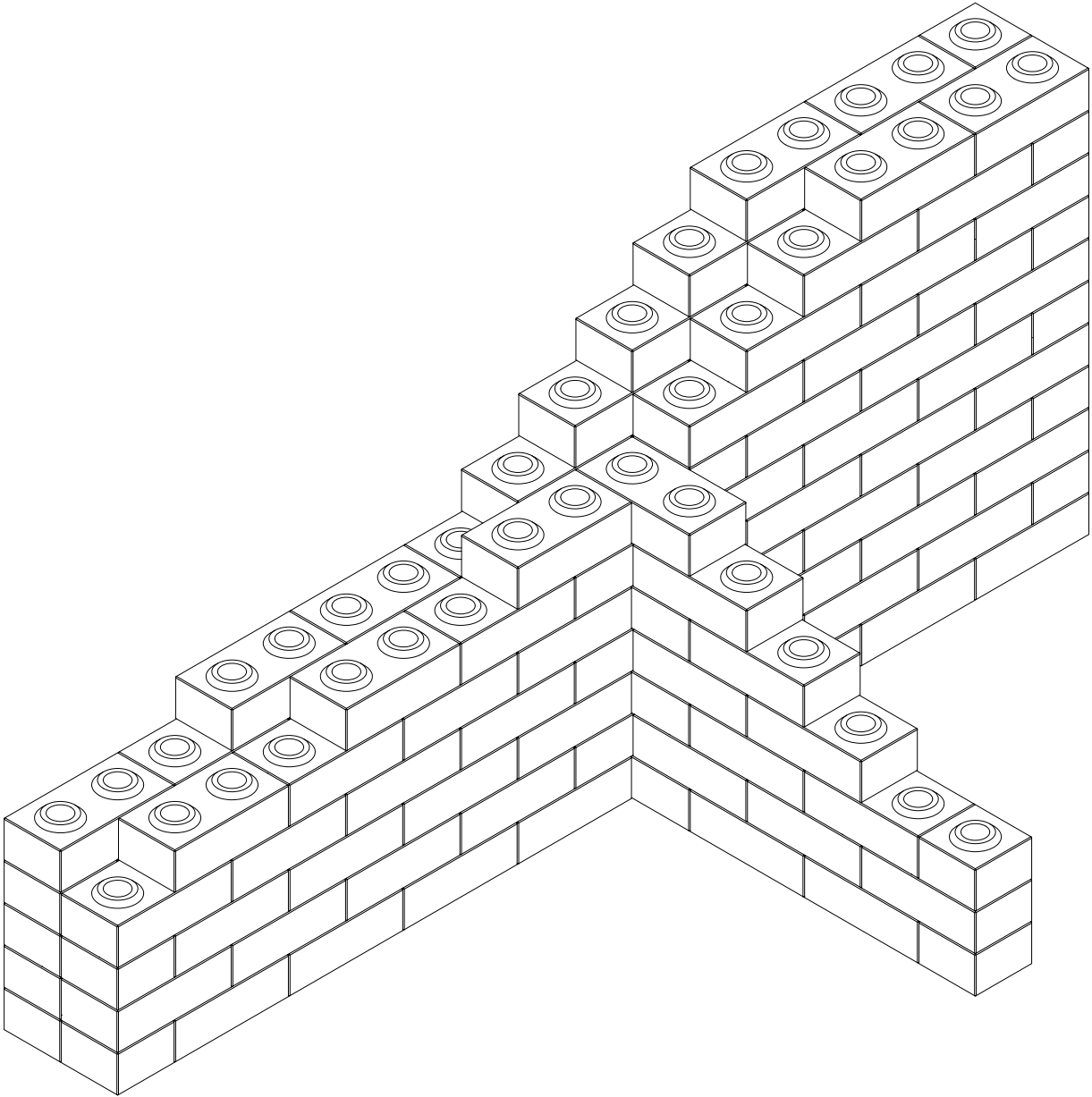
ExploreLab | P5 | Feven Zeru



Design

ExploreLab | P5 | Feven Zeru

Compressed Earth Blocks



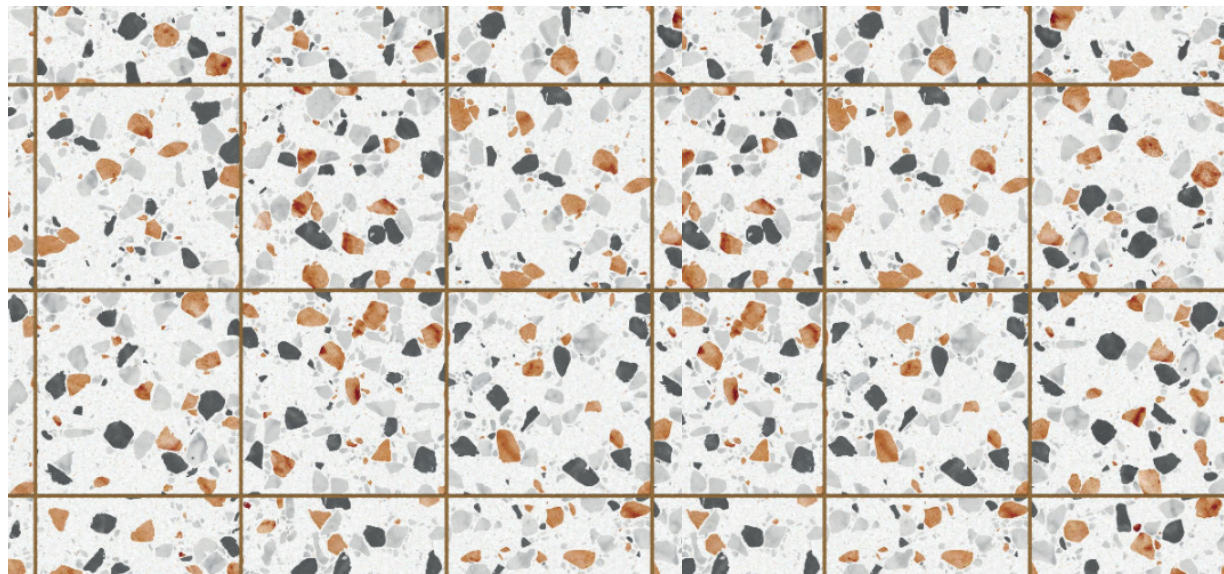
Design

Compressed Earth Blocks



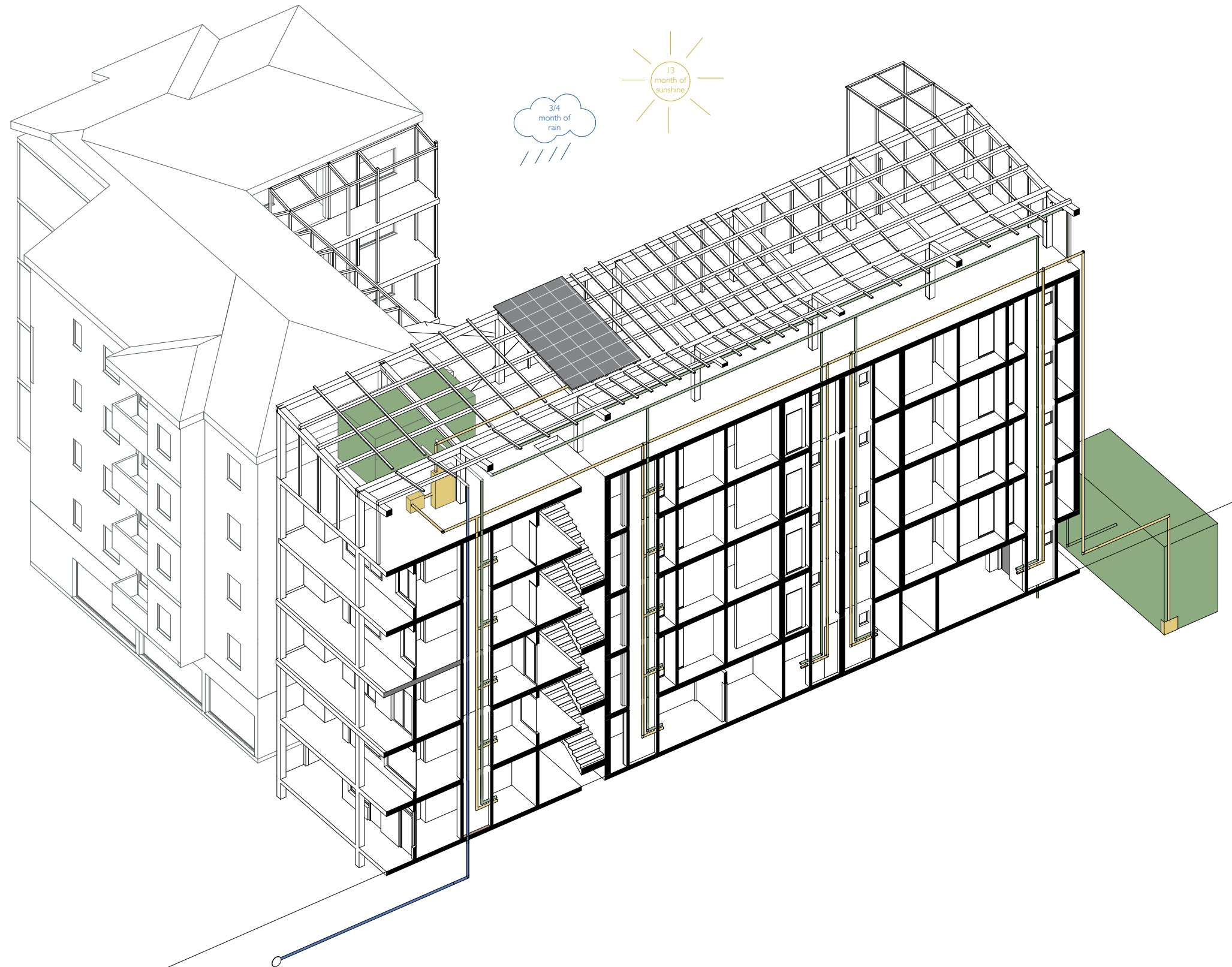
Design

Materiality



Design

Building Systems



Design

ExploreLab | P5 | Feven Zeru

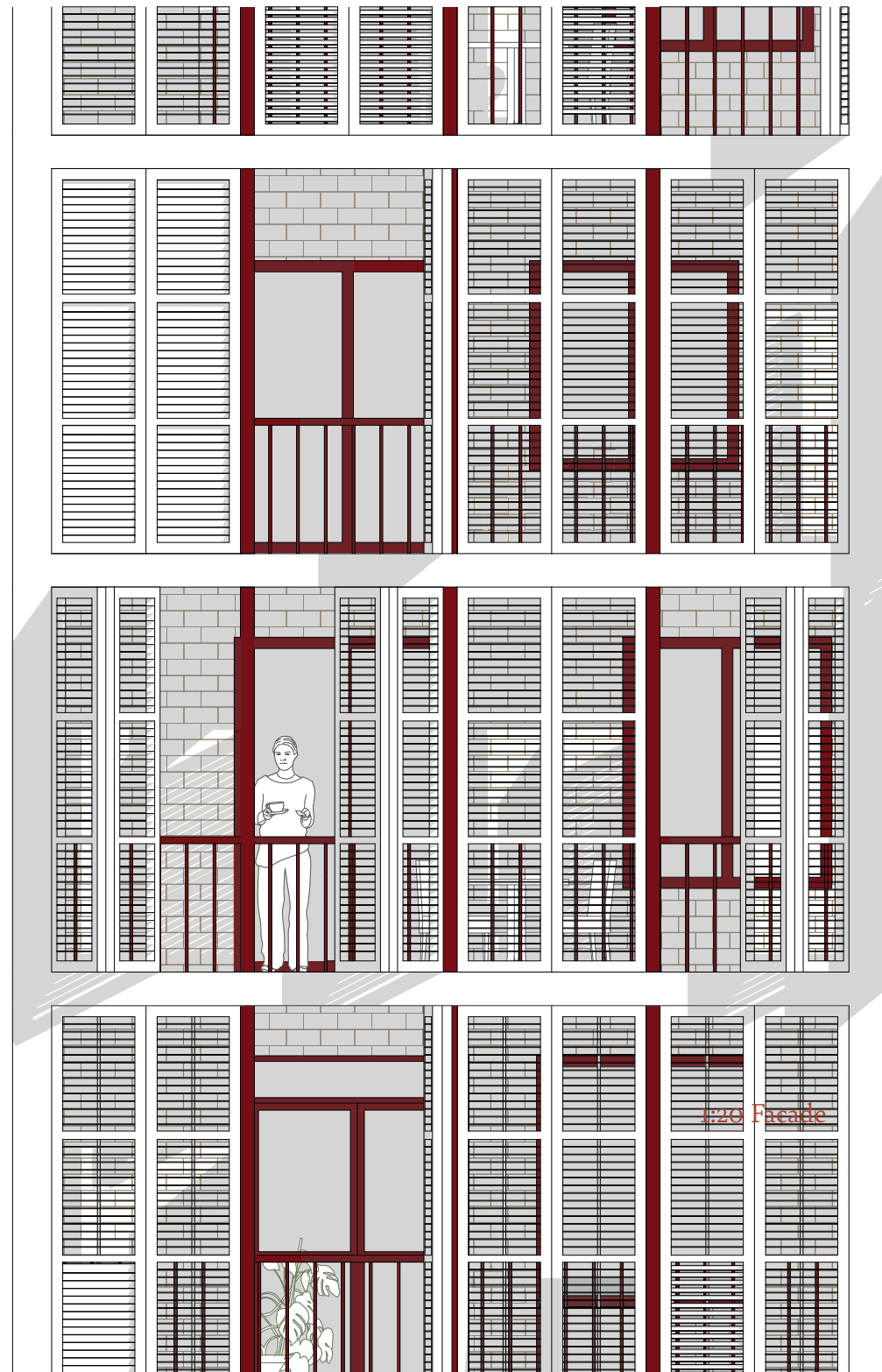
Appropriation in the Condominium



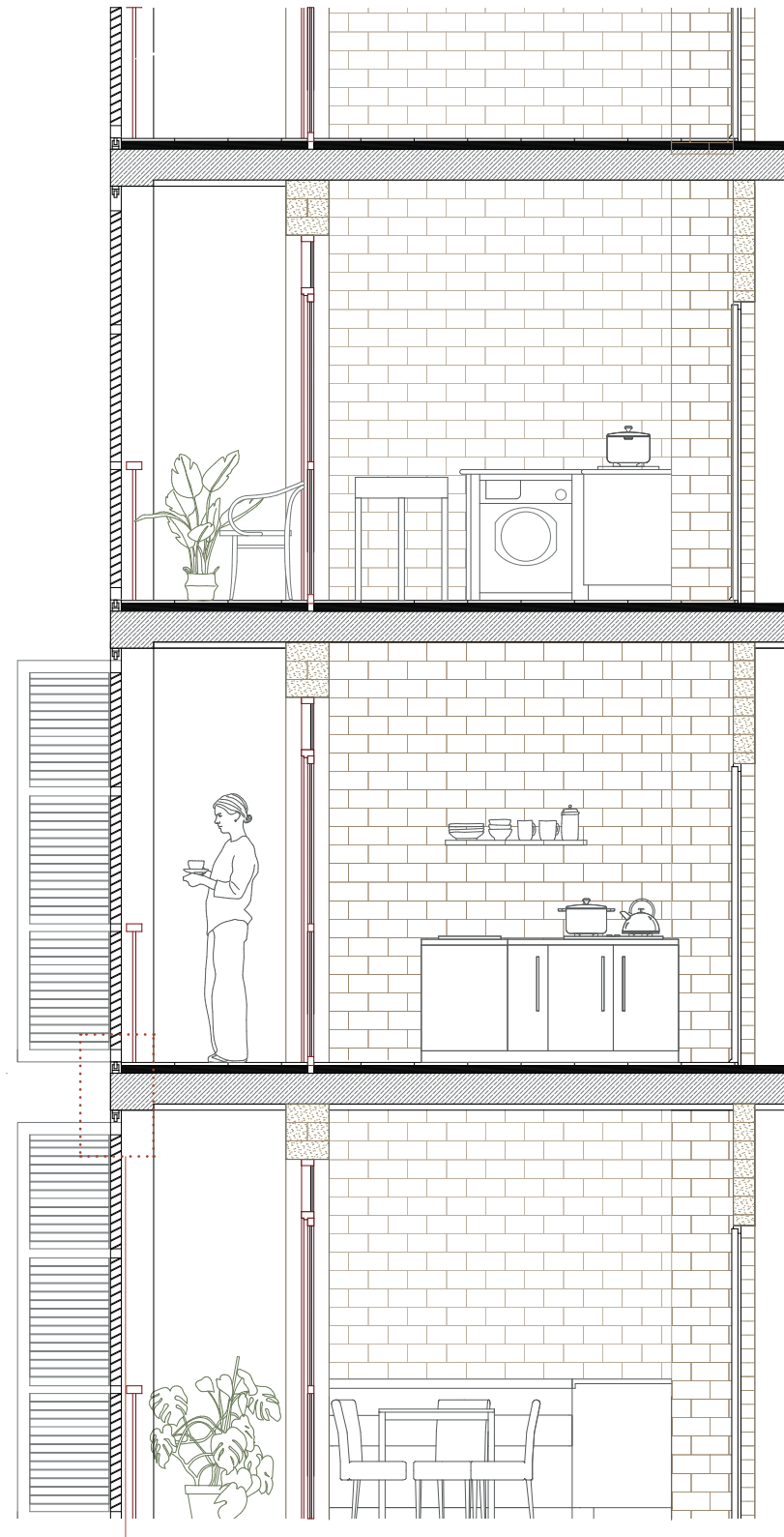
Design

ExploreLab | P5 | Feven Zeru

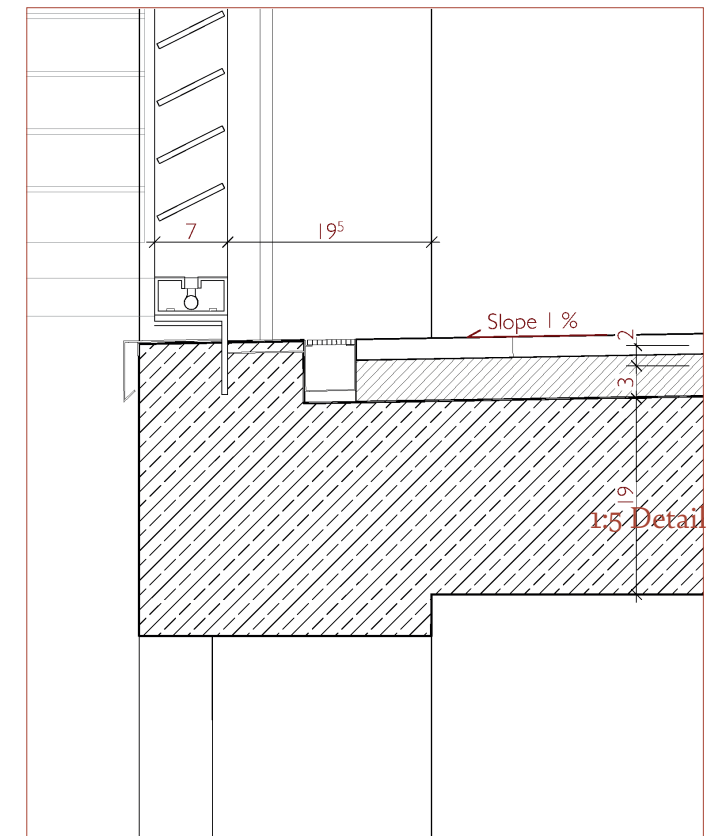
Appropriation in the Hybrid



1:20 Facade



1:20 Section



1:5 Detail

Design

ExploreLab | P5 | Feven Zeru

Appropriation in the Hybrid



Design

ExploreLab | P5 | Feven Zeru

Appropriation in the Hybrid



Design

ExploreLab | P5 | Feven Zeru

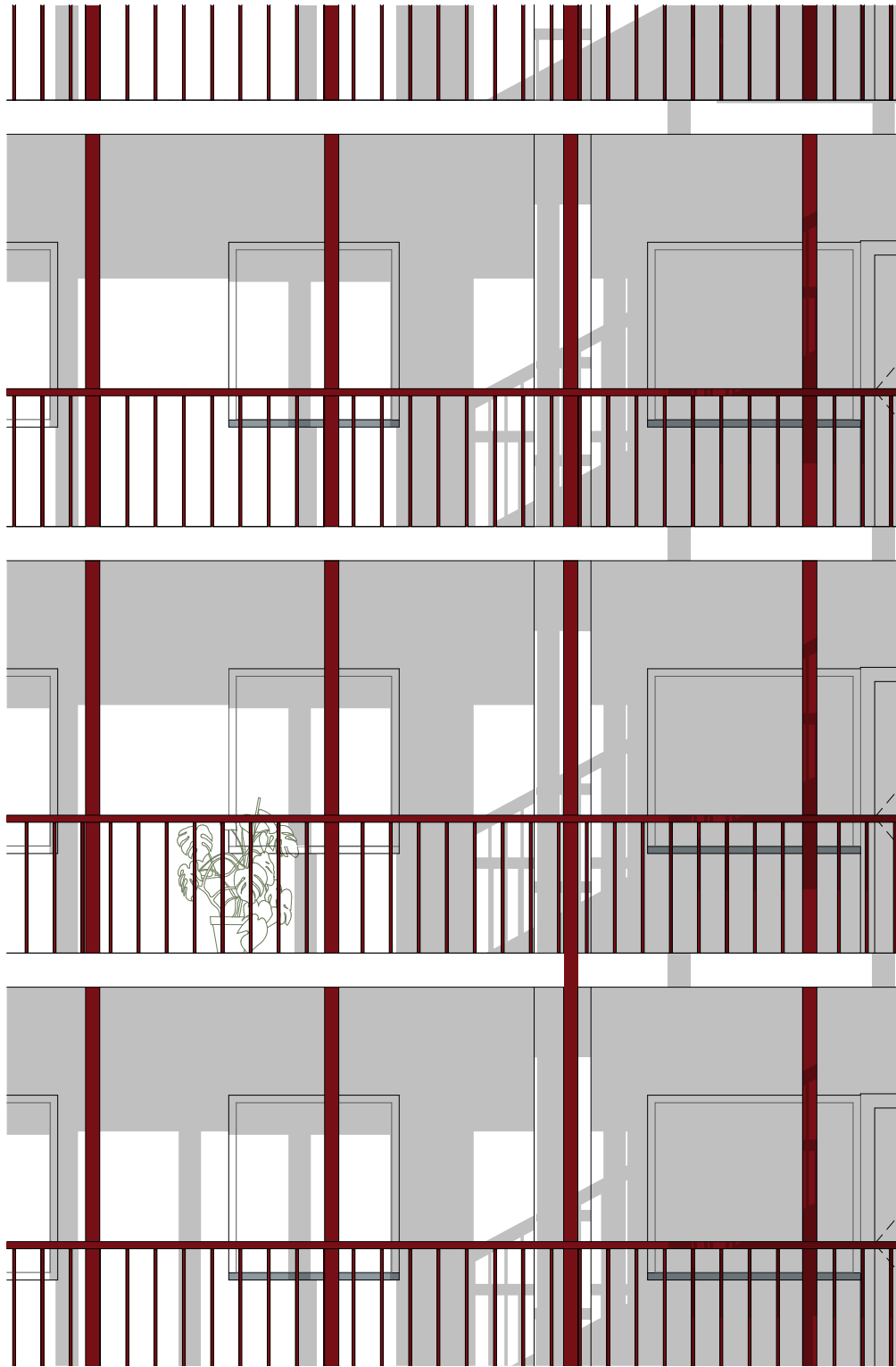
Inbetween Spaces in the Condominium



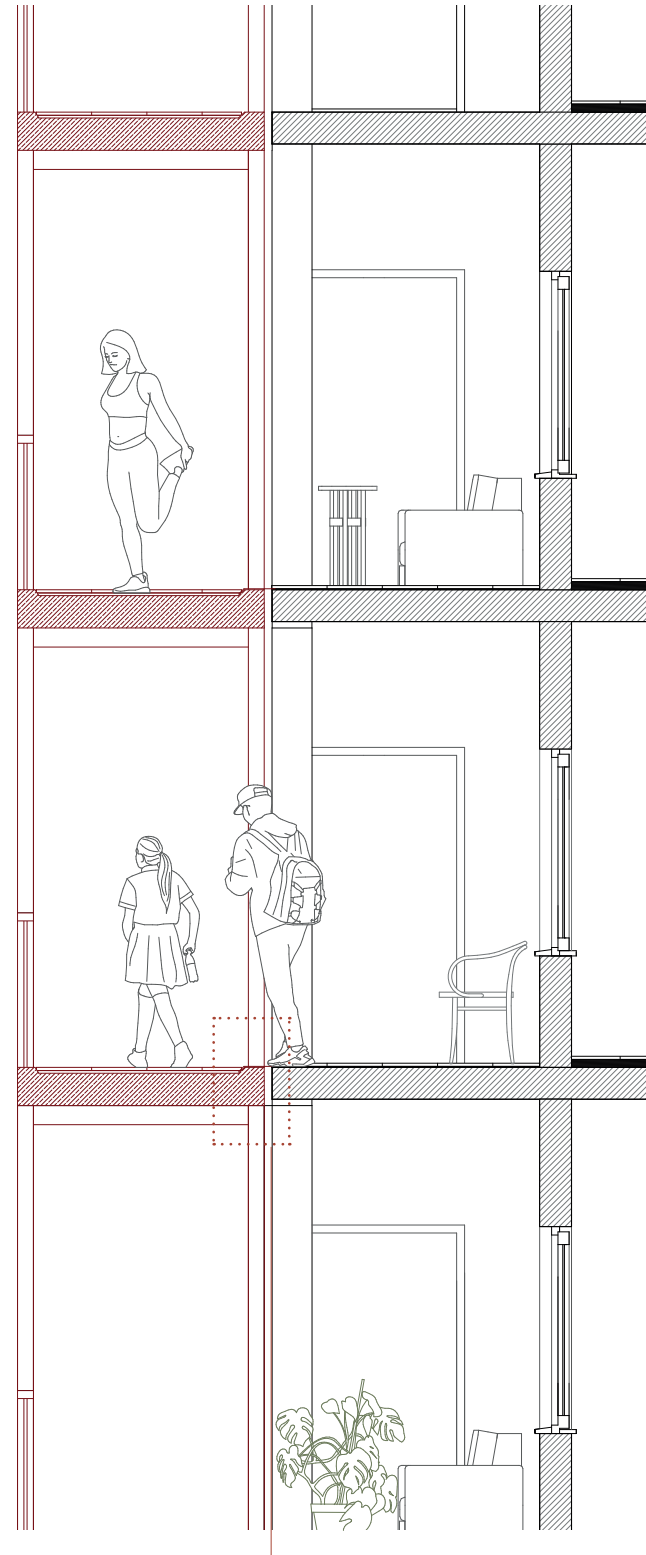
Design

ExploreLab | P5 | Feven Zeru

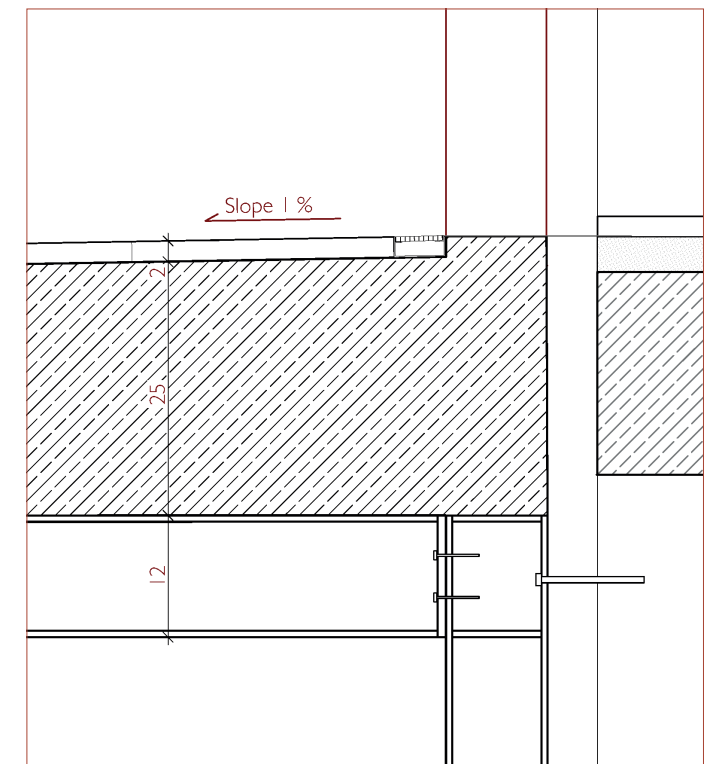
Inbetween Spaces in the Hybrid



1:20 Facade



1:20 Section



1:5 Detail

Design

ExploreLab | P5 | Feven Zeru

Inbetween Spaces in the Hybrid



Design

ExploreLab | P5 | Feven Zeru

Inbetween Spaces in the Hybrid



Design

ExploreLab | P5 | Feven Zeru



Design

ExploreLab | P5 | Feven Zeru

Life in the Neighbourhood



Design

ExploreLab | P5 | Feven Zeru